

25 September 2012

www.intgold.com.au

NEW ZONES OF MINERALISATION AND SIGNIFICANT STRIKE EXTENSIONS DRILLED AT THE LATIN GOLD PROJECT, BRAZIL

Highlights

- Recent results intersect mineralisation across >1,000m of strike along the PF Quartz Vein zone, and define a new corridor of mineralisation 500m north. The 12 holes of recent RC drill results received include better intercepts of;
 - **12m at 1.11g/t gold** from surface on a 200m west step-out on the PF quartz vein zone in drill-hole AR 025.
 - **12m at 1.10g/t gold** from 44m including **4m at 2.06g/t gold** in hole AR036 located 650m east along trend of PF vein zone mineralisation.
 - **4m at 2.41g/t gold** and **4m at 2.17g/t gold** in holes AR029 and AR028 located on new sub-parallel mineralised zone.
- RC drilling complete at Ana Prospect with 53 holes totalling 4,779m drilled.
- Seven diamond holes completed totalling 1,458m drilled with the first two holes submitted for analysis in the 2,000m diamond program.

International Goldfields Limited (ASX: IGS) ("IGS" or "the Company") has completed the RC drilling program for the Ana Prospect located at the Latin Gold Project in Mato Grosso, Brazil, and received results for an additional 12 RC holes. Gold mineralisation for 1,000m of extent along the PF quartz vein zone has been confirmed in recent RC results. The 1km of extent is centred on a 300m long high grade shoot defined in earlier diamond drilling that intersected **21m at 5.9g/t Au, including 8m at 13.6g/t Au** in diamond hole ANA008, and **18m at 3.24g/t Au** in hole ANA006 along an east-west trending zone.

Better intercepts in the recent four-metre composite sampling results include **12m at 1.11g/t Au** in drill hole AR 025 located 200m west of ANA006. Also, a significant step out to the east on trend with the PF quartz vein zone has returned **12m at 1.10g/t Au** in a single hole (AR 036) located 650m east of ANA008, with assays pending on an additional five RC holes in the vicinity of the AR036 intercept.

Located over 500m to the north of diamond holes ANA006 & ANA008 the recent RC results have also defined a new sub-parallel zone of mineralisation in drill holes AR029 & AR028 which have returned **4m at 2.41g/t gold** and **4m at 2.17g/t gold** respectively.

BOARD

Tony Sage
Chairman

Bernard Aylward
Non-Executive Director
& Technical Advisor

Paul Kelly
Non-Executive Director

MANAGEMENT

Pip Leverington
Company Secretary

Travis Schwertfeger
Chief Executive Officer

REGISTERED OFFICE AND PRINCIPLE PLACE OF BUSINESS

18 Oxford Close
Leederville WA 6007

POSTAL ADDRESS

PO Box 306
West Perth WA 6872

COMMUNICATION DETAILS

Telephone: +61 8 9211 0635
Facsimile: +61 8 9322 2631

Web Address:
www.intgold.com.au
Email Address:
info@intgold.com.au

AUSTRALIAN BUSINESS NUMBER

69 099 544 680

SHARE REGISTRY

Advanced Share
Registry Services Pty Ltd
110 Stirling Hwy
Nedlands WA 6009

MEDIA CONTACT

David Tasker
PPR

T: 08 9388 0944/ 0433 112 936
E: david.tasker@ppr.com.au

ASX CODE

IGS

In total, assays have been received on the first 3,137m of drilling of the 4,779m drill campaign that has tested six target areas within the 2.5 by 4km surface gold anomaly.

IGS has also completed seven diamond drill holes with all holes intersecting quartz veining and sulphide which are visually analogous to previous mineralised diamond intercepts. Four of the potentially mineralised intercepts target down-dip extensions of the PF Quartz Vein zone (refer to Figures 3 & 4). The four holes test the extents of the 300m long high grade shoot interpreted from drilling results received to date. The deeper diamond drilling indicates strong potential for a steep east plunge to the high grade zone to extend at depth, with the easternmost hole ANA010 intersecting a 24m wide interval from 138.2m depth containing both pyrite and chalcopyrite sulphides within the interval, and abundant quartz veining and quartz-healed breccia textures within the broader zone of sheared granites and dolerite dyke rocks (refer to Figure 4).

An additional 3 holes have intersected sulphides and quartz veining on further extension drilling along strike to the west, which has the potential to further extend the mineralised trend beyond the 1km extent confirmed with RC drilling results received to date (refer to Figure 2).

Brazil

The 93% IGS-owned Latin Gold Project holds 3,000km² of licences containing multiple targets for epithermal and porphyry style gold-copper mineralisation. During the ongoing RC and diamond drilling program at the Ana Prospect, results for recent surface geochemistry programs on the project are being compiled to advance targeting on existing prospects and identify new targets across the Company's considerable land holdings. Drilled targets at the project include the recent discovery at Ana Prospect, copper porphyry mineralisation at the Jaca Prospect, and Au-Cu lode mineralisation at the Pe Quente Prospect, where better intercepts on vein hosted mineralisation include **7.62m at 6.46g/t Au** (PQ002) and **4m at 4.39g/t Au** (PQ019), and better intercepts of mineralisation disseminated in granite host rocks include **5.6m at 2.24 g/t Au** from 64.4m and **9m at 1.27% copper** from 70m drill depth (PQ014).

Table 1: Ana Prospect Significant Intercepts; 0.5g/t Au cut-off

Hole ID	Easting	Northing	From (m)	To (m)	Interval (m)	Au (g/t)	Cu (%)
ANA Prospect - RC							
AR019	761782	8837803	72	76	4m	0.86	<0.01%
*AR022	761692	8837452	20	32	12m	2.16	0.05%
including			24	28	4m	6.47	0.06%
AR025	761534	8837447	0	12	12m	1.11	<0.01%
AR025			72	76	4m	1.94	<0.01%
AR027	761210	8838136	68	72	4m	0.56	<0.01%
AR028	761255	8838108	40	44	4m	2.17	<0.01%
AR029	761300	8838085	0	4	4m	2.41	<0.01%
AR029			24	28	4m	0.66	0.01%
AR032	761494	8838143	64	68	4m	0.69	<0.01%
AR033	761393	8837951	28	32	4m	1.53	0.01%
AR034	761321	8837945	8	12	4m	0.58	<0.01%
AR034			44	60	16m	0.66	0.012%
AR036	762328	8837692	44	56	12m	1.10	0.02%
including			44	48	4m	2.06	0.07%
<i>*Correction to interval width on intercept announced in ASX disclosure dated 5 September 2012</i>							

TECHNICAL NOTES:

- All assay numbers are reported as un-cut and all intercepts reported as drilled thickness and are not to be interpreted as true thickness unless otherwise indicated.
- Reported intersections are based on a 0.5 g/t gold lower cut-off, no upper-cut applied and maximum 4m internal dilution on 4m composite samples and 1m internal dilution on 1m interval re-sampling
- Grid coordinates are SAD69 UTM zone 21S

FOR FURTHER INFORMATION, PLEASE CONTACT:

International Goldfields

Travis Schwertfeger

T: +61 8 9221 7729

E: tschwertfeger@intgold.com.au

Tony Sage

T: +61 8 9380 9555

Professional Public Relations

David Tasker

T: +61 8 9388 0944

M: +61 433 112 936

E: david.tasker@ppr.com.au

About International Goldfields

International Goldfields is an active exploration company focused on organic growth of gold resources with excellent projects strategically located in some of the most exciting emerging gold mineralised districts in the world – the Birimian of West Africa and the Juruena belt of Brazil. We have the funding and the projects to ensure an active exploration program all year round and will provide regular news flow for investors.

Competent Person Statement:

The information in this report that relates to exploration results is based on information compiled by Mr Travis Schwertfeger. Mr Schwertfeger is the Chief Executive Officer of International Goldfields Limited. Mr Schwertfeger is a member of The Australian Institute of Geoscientists and has sufficient experience which is relevant to the style of mineralisation and type of deposit under consideration and to the activity which he is undertaking to qualify as a Competent Person as defined in the 2004 Edition of the 'Australasian Code for Reporting of Exploration Results, Mineral Resources and Ore Reserves'. Mr Schwertfeger consents to the inclusion in the report of the matters based on information in the form and context in which it appears.

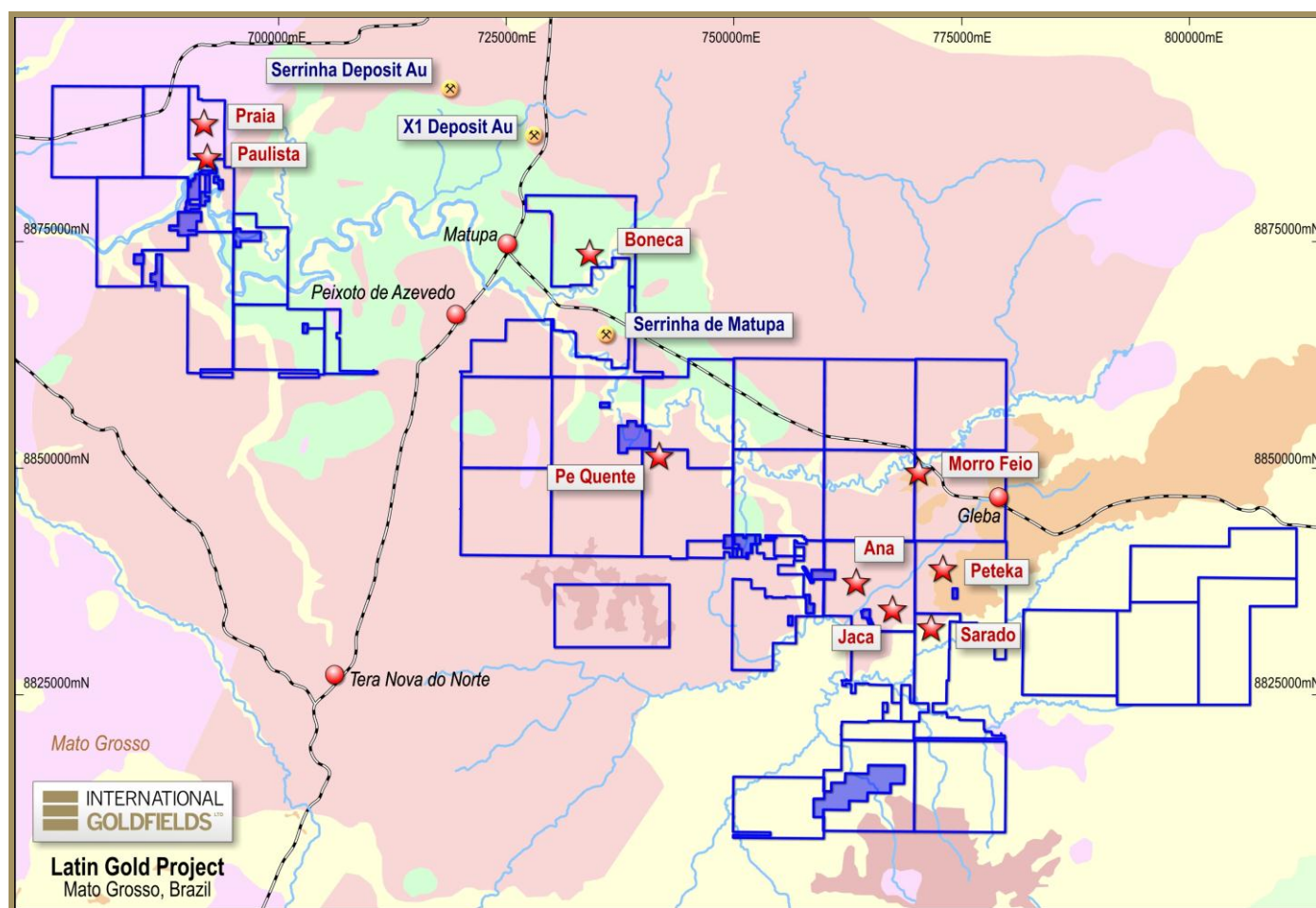


Figure 1: Latin Gold Project tenement map, prospect locations, and regional summary geology

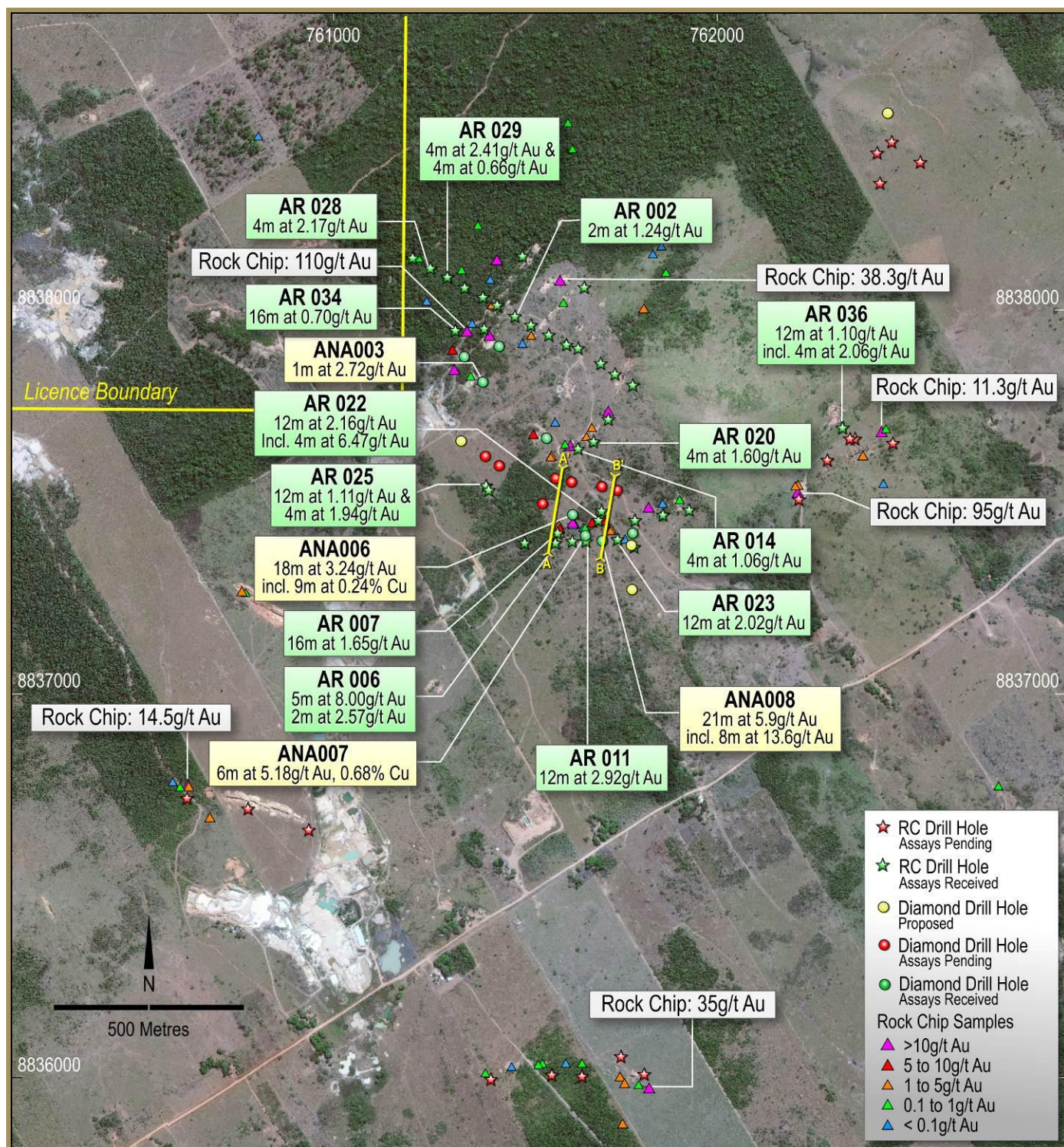


Figure 2: Ana Prospect: drill and rock chip location map, with significant RC intercepts (green labels) and diamond intercepts (yellow labels)

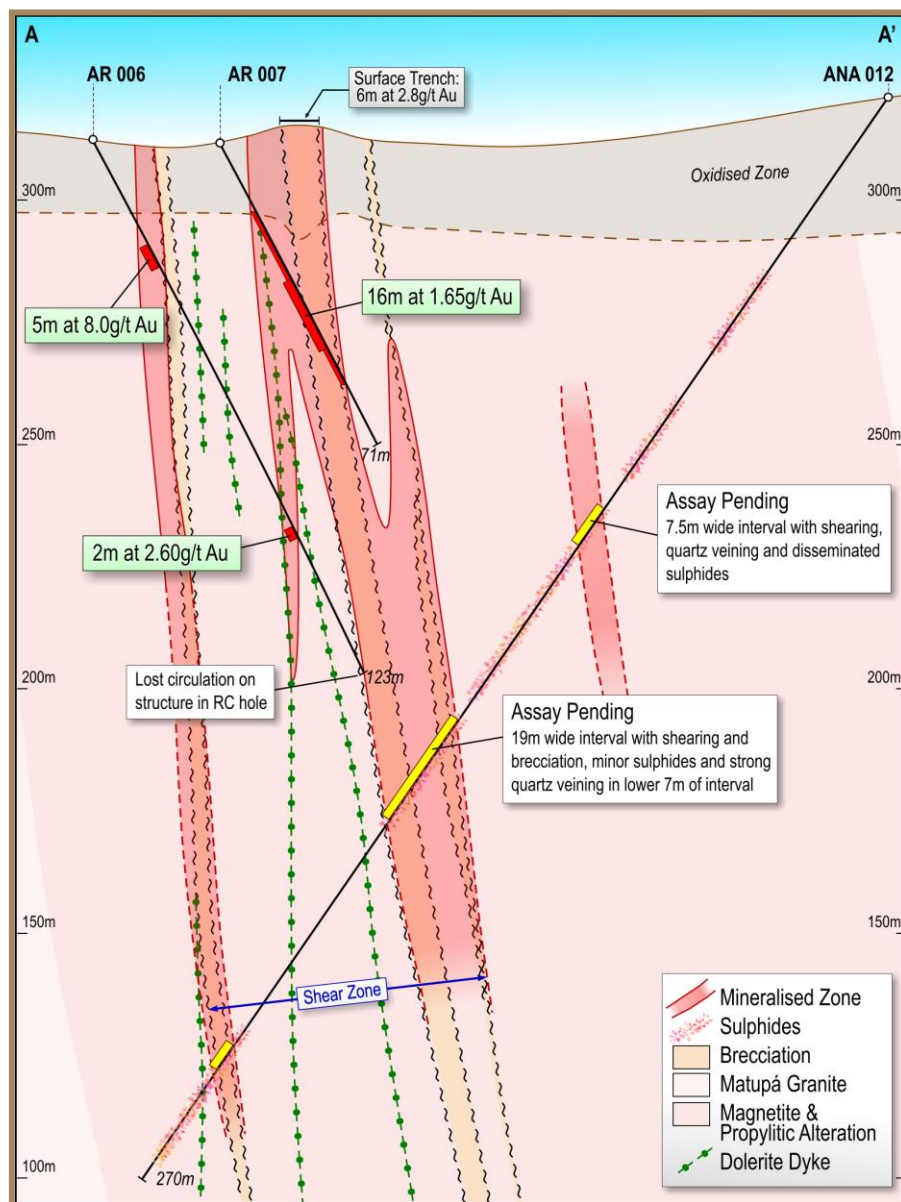


Figure 3: Section A-A' located across the PF quartz vein zone

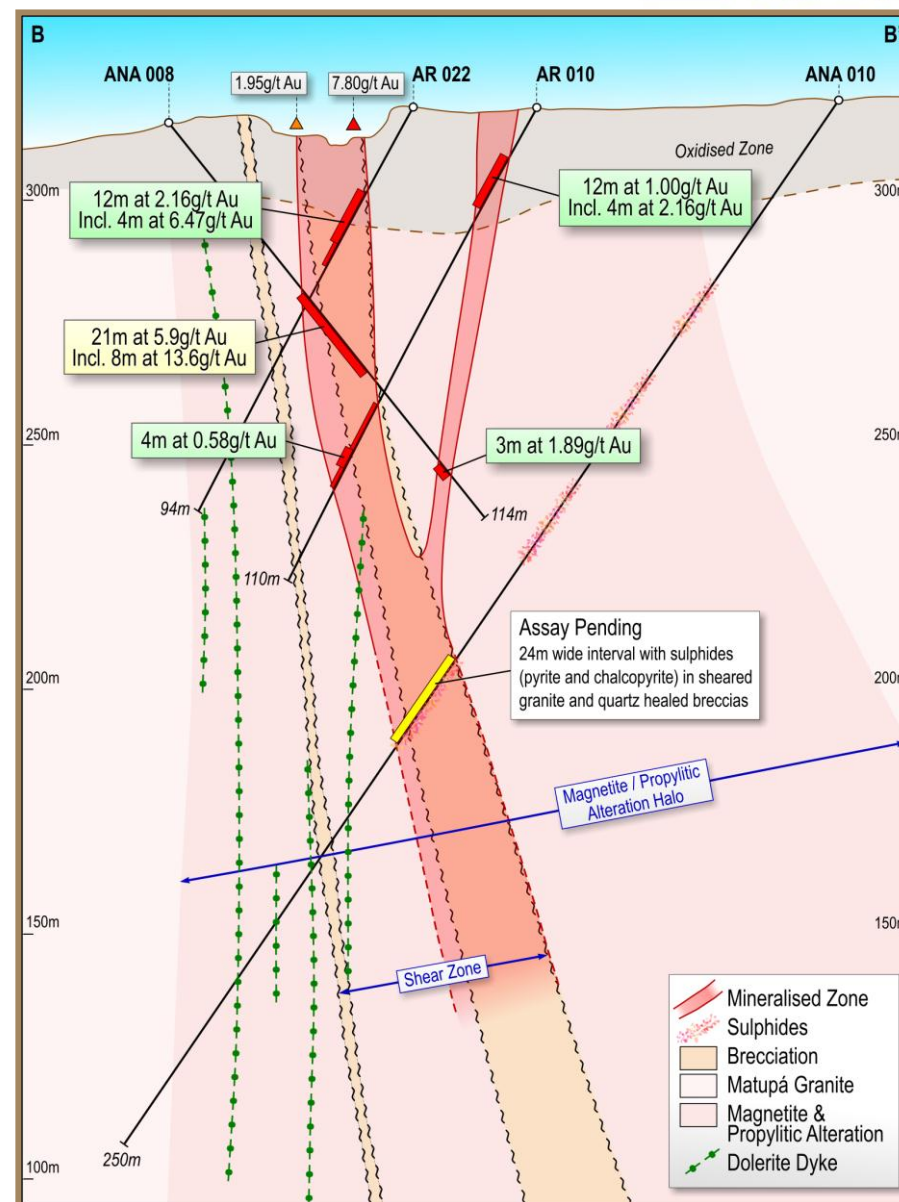


Figure 4: Section B-B' located across the PF quartz vein zone