



**KENTOR GOLD LTD**

# Kentor Gold Gold Symposium - Sydney

22 Oct 2012

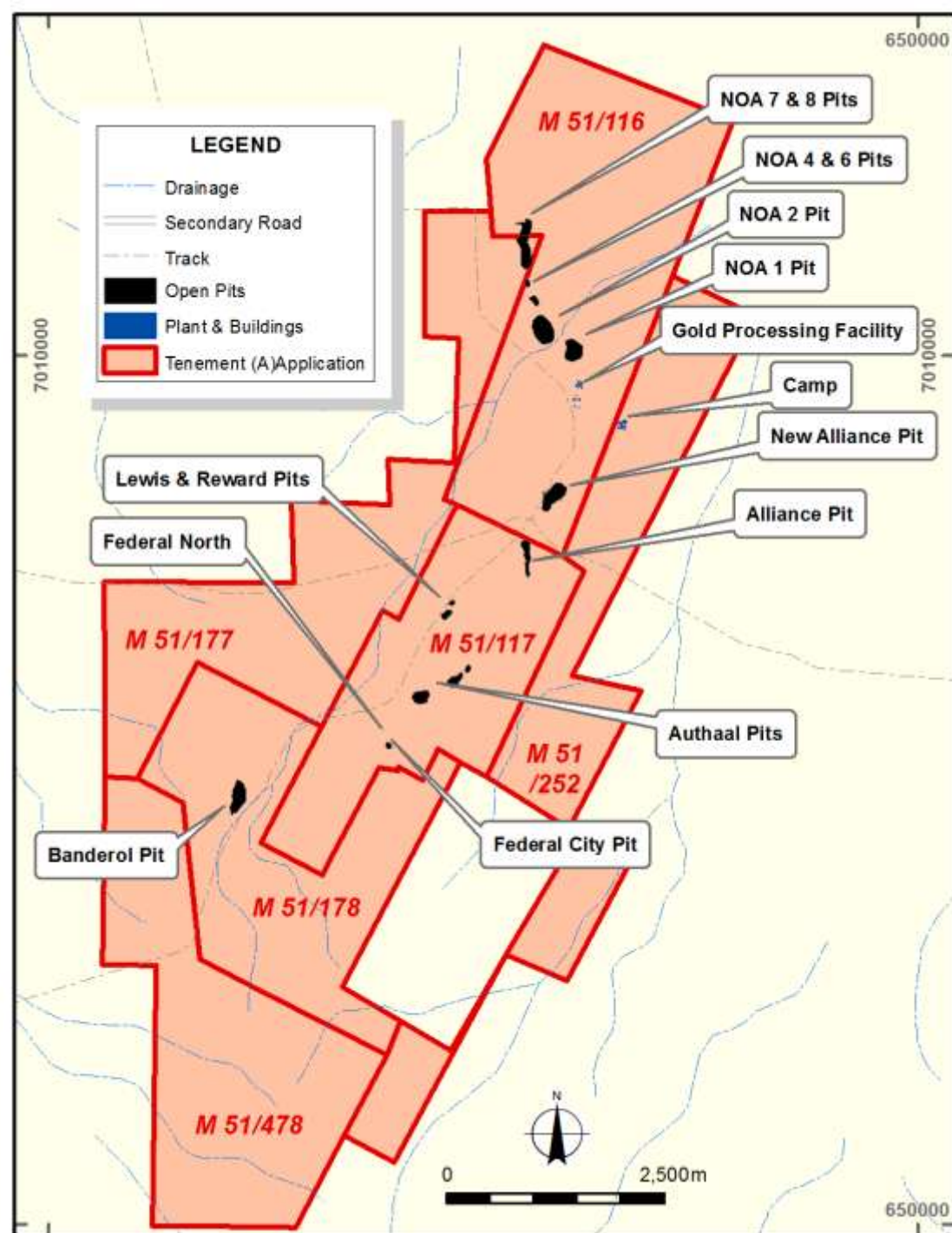


# Corporate Structure



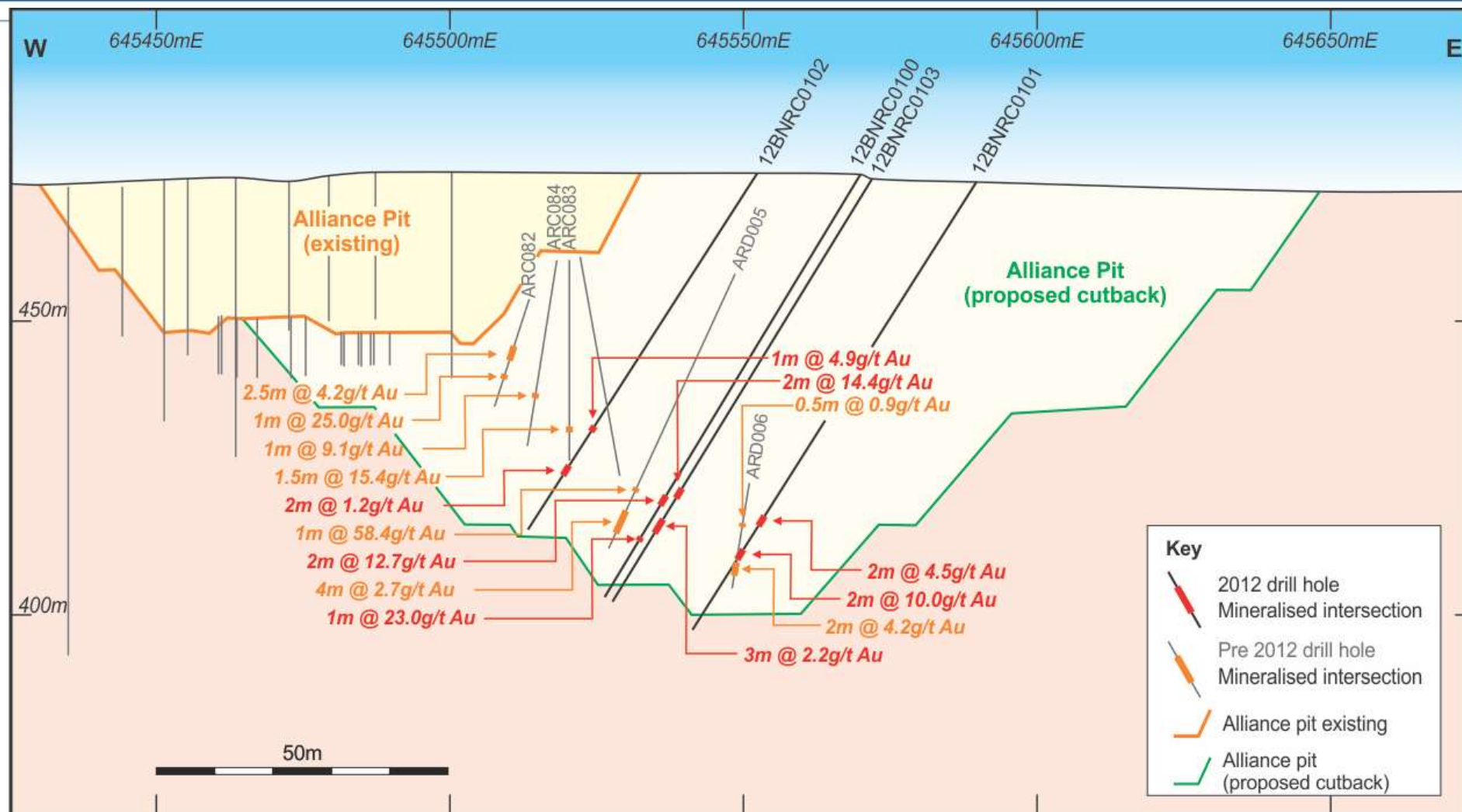
# Murchison Gold Project

- 20 open pits and one underground mine





# Alliance Pit – Cross Section



Cross section looking north through the Alliance Pit at 7007830mN, 20m wide section, showing results from recent RC drilling and significant results from historic RC drilling.

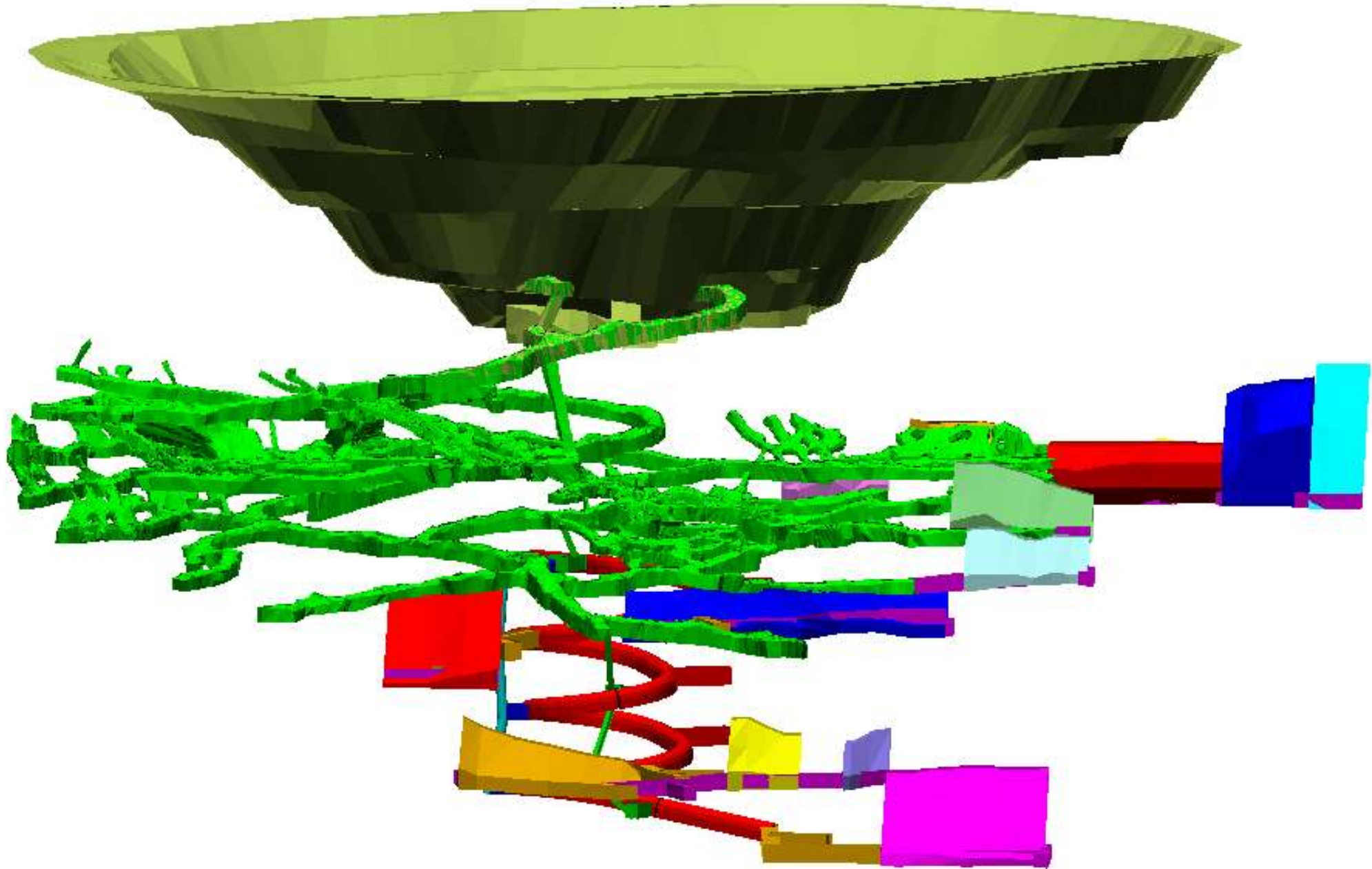


# NOA 2 Underground Mine Portal





# NOA 2 Underground Design – Existing workings shown in green

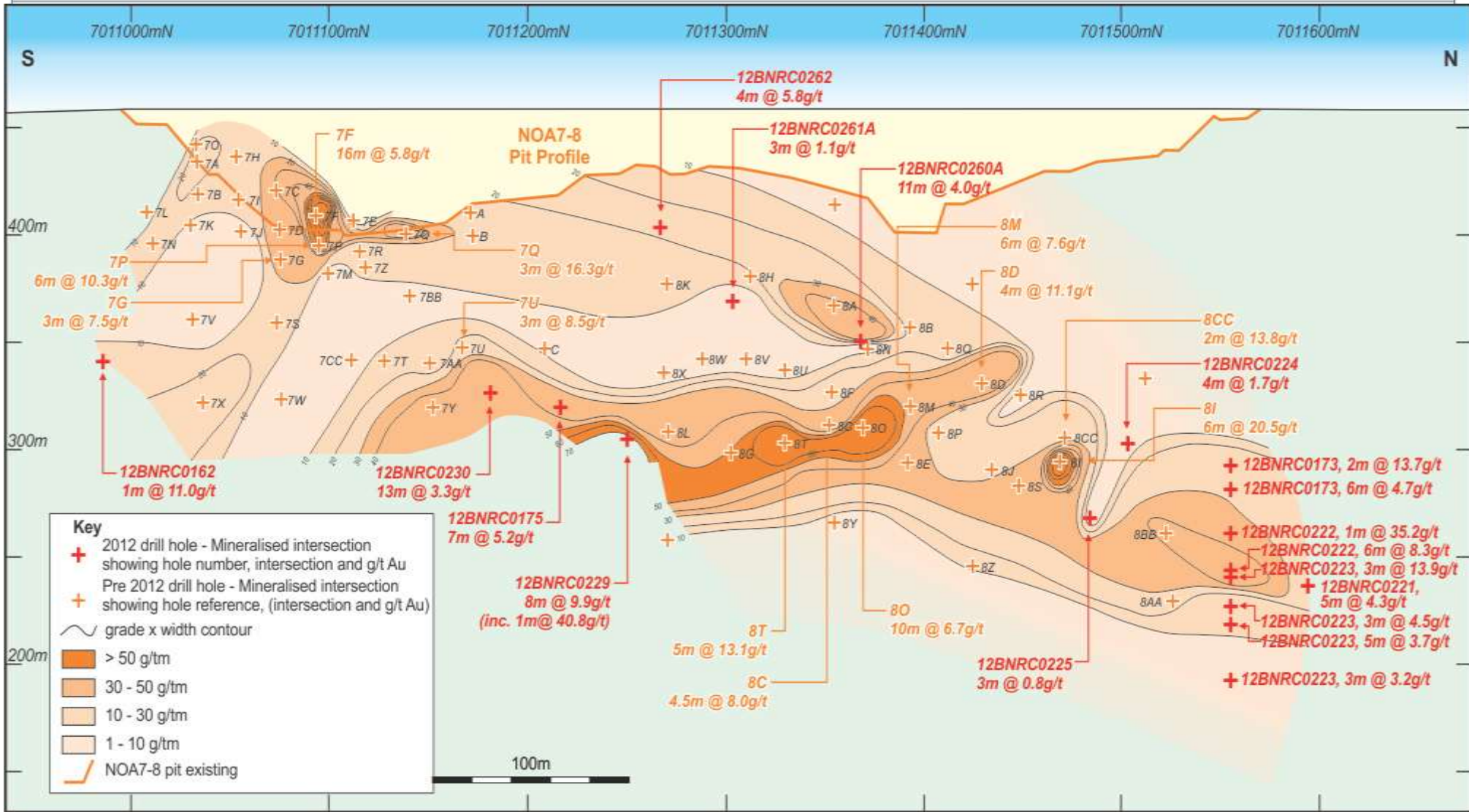


# Underground Mining Equipment arriving at site



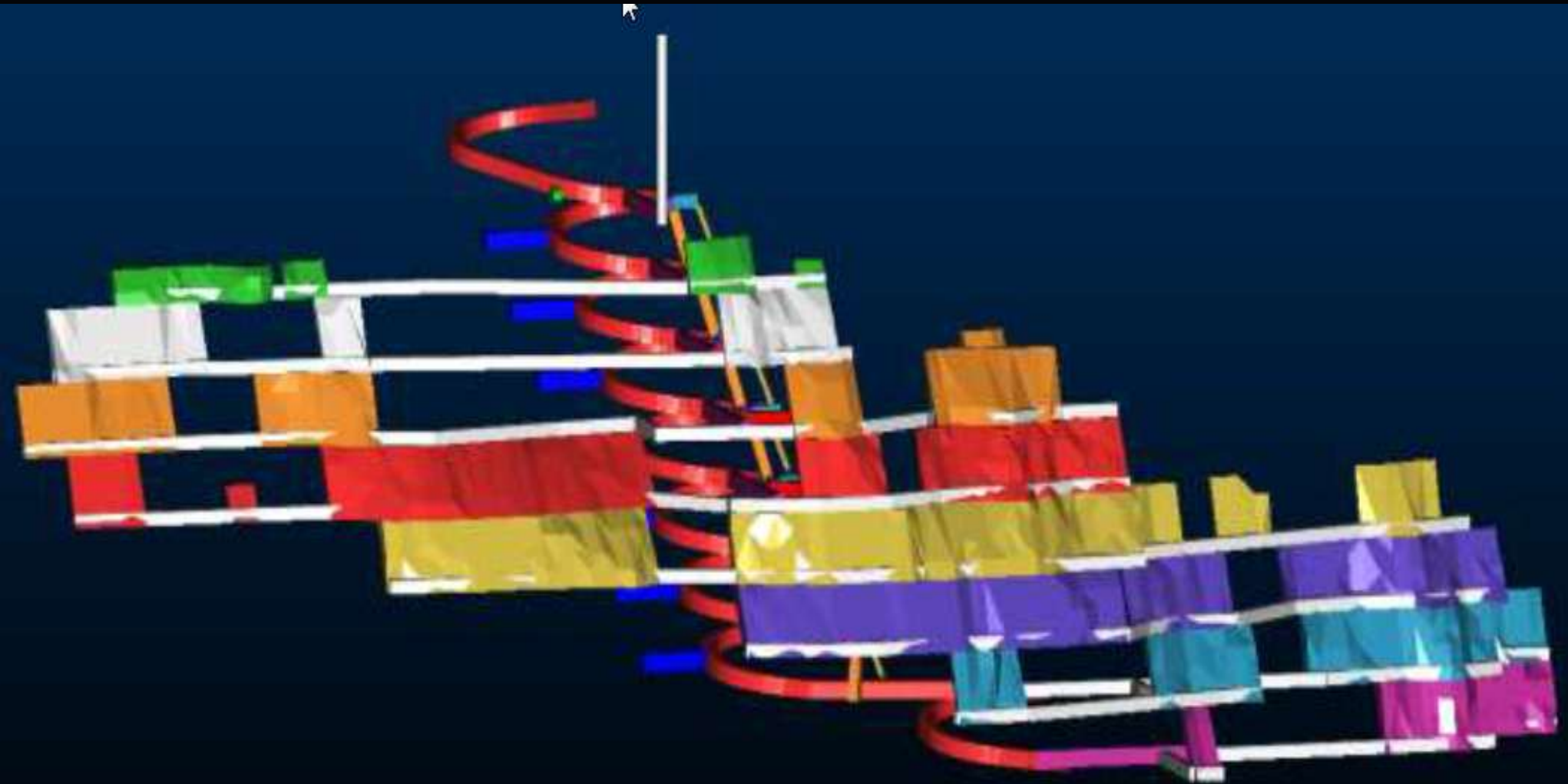


# NOA 7 and 8 Long Section Showing g/t \* m Interval

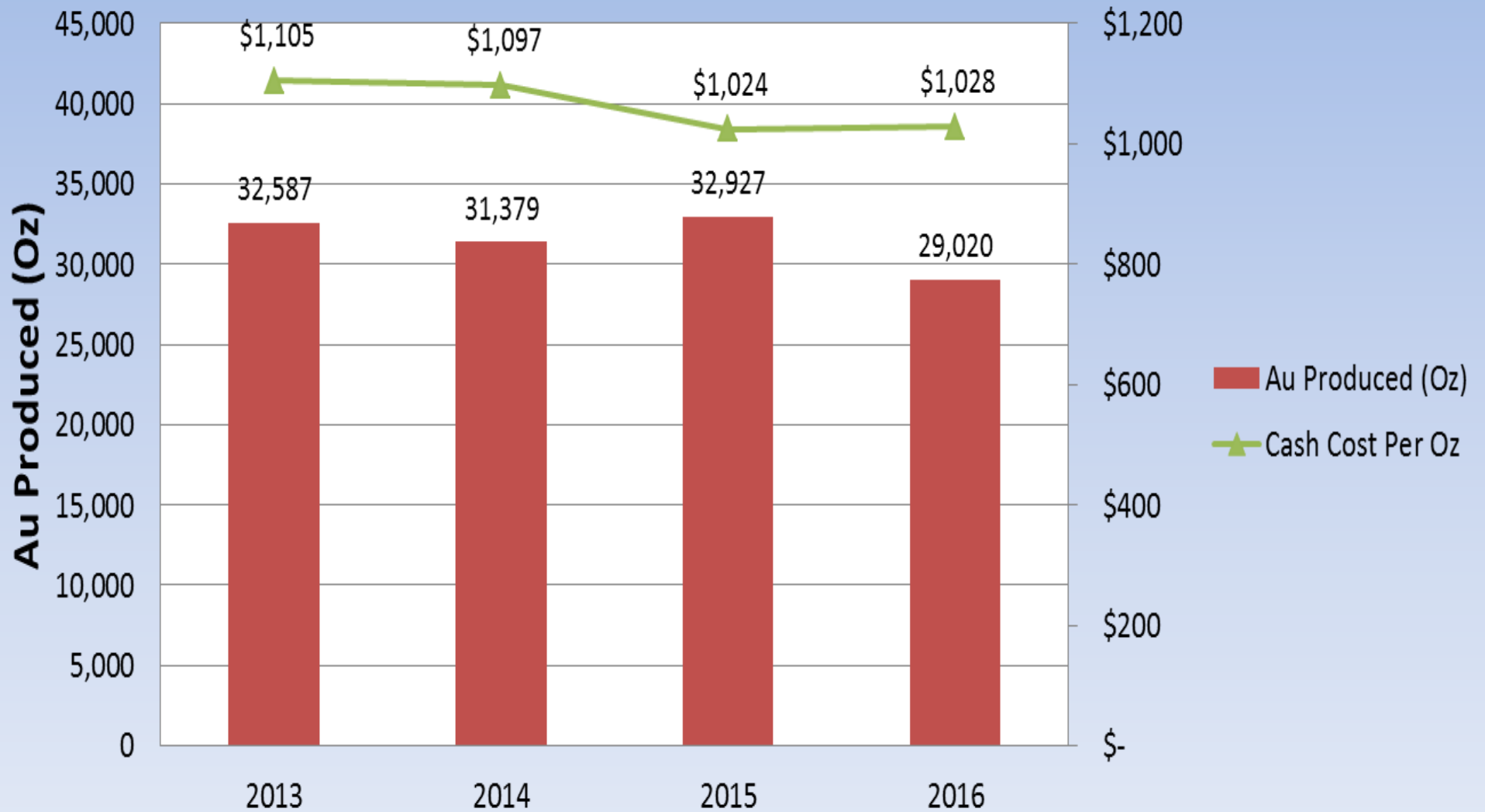




# NOA 7 & 8 Mine Design



# Murchison Gold Project Production Plan





# Four Stage Growth Strategy

Stage 1

Refurbish and commission existing plant

Done

Stage 2

Add a heap leach circuit to treat low grade ore

Stage 3

Expand plant to 500,000 tpa

Stage 4

Flotation of copper gold ore

# Jervois Copper Project

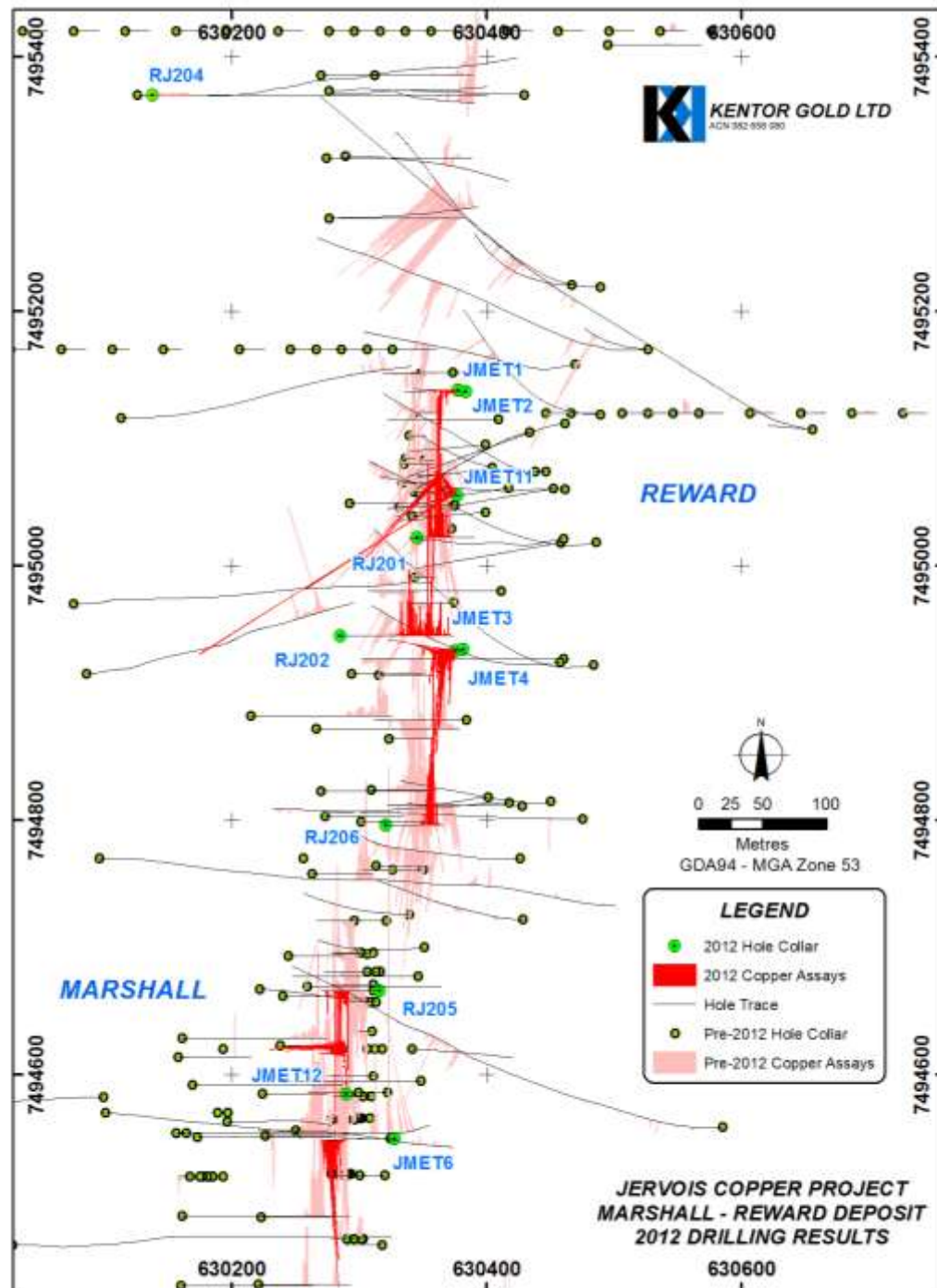




# Reward Results

## 2012 Exploration Results

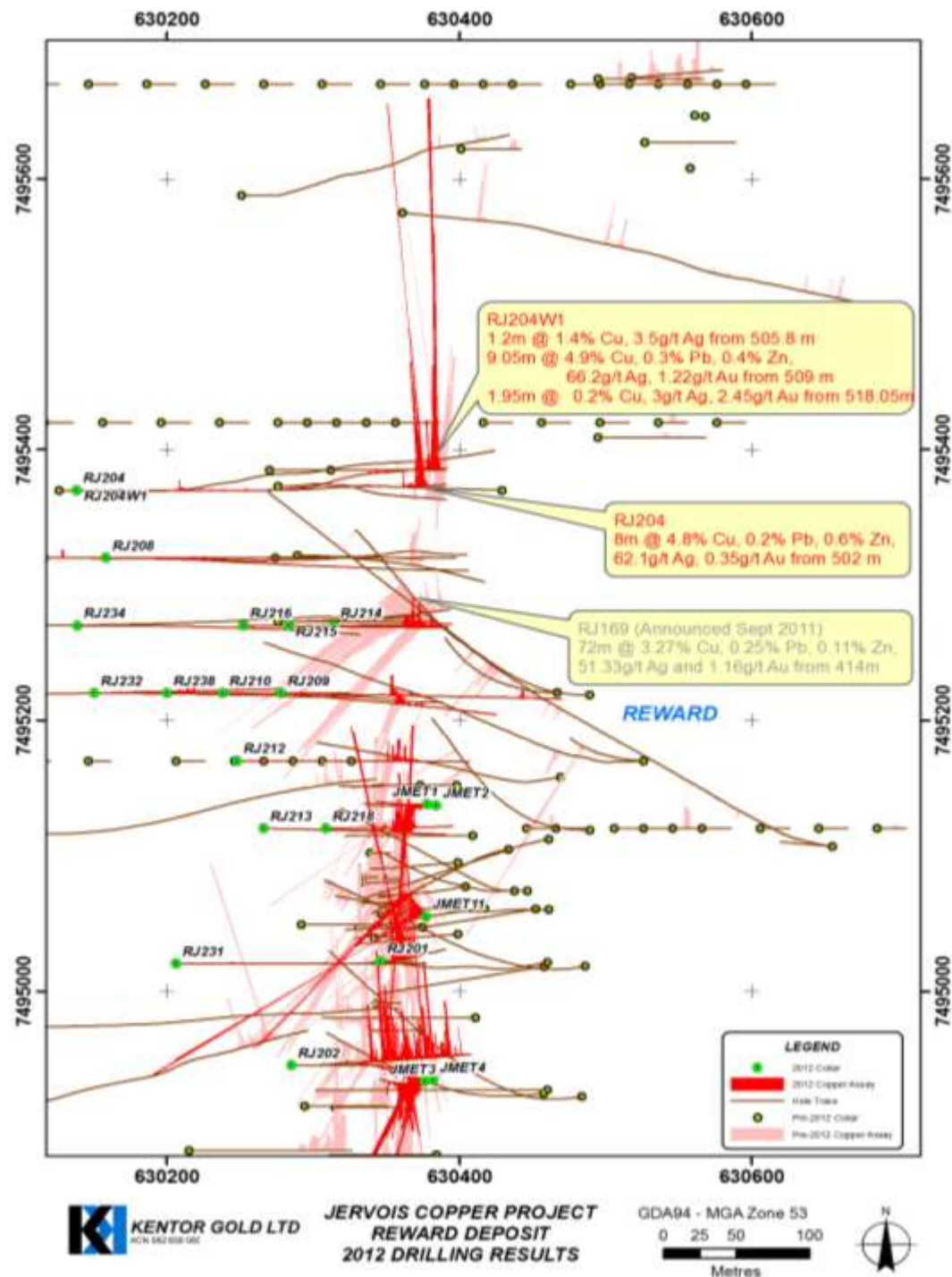
- 60m @ 1.3 % Cu, 113.3 g/t Ag JMET 11
- 33.8m @ 1.79% Cu, 28.5 g/t Ag RJ201
- 53.5m @ 1.08% Cu, 24.9 g/t Ag RJ202
- 16.3m @ 1.87% Cu, 55.3 g/t Ag JMET3
- 10.3m @ 2.1% Cu, 13.3 g/t Ag JMET4
- 12m @ 3.72% Cu, 40.7 g/t Ag RJ206
- 4.2m @ 6.6% Cu, 30 g/t Ag JMET2
- 21.4m @ 3% Cu, 40.1 g/t Ag JMET6
- 7m @ 2.3% Cu, 23.4 g/t Ag JMET8
- 25m @ 1.5% Cu, 28.2 g/t Ag JMET12



# Reward North

## 2012 Exploration Results

8m @ 4.8% Cu, 62.1 g/t Ag, 0.35 g/t Au  
9m @ 4.9% Cu, 66.2 g/t Ag, 1.22 g/t Au

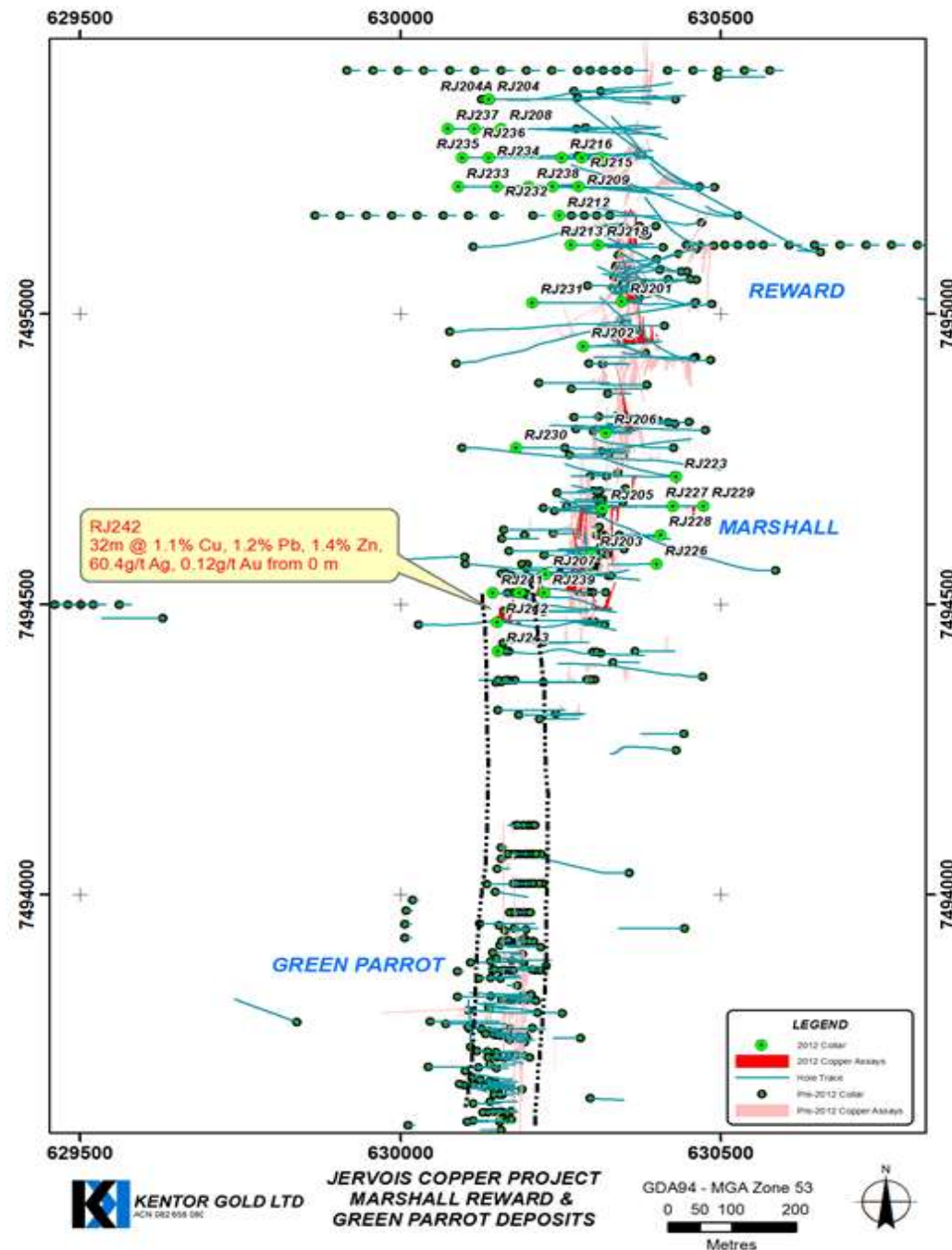




# Marshall West

32m @ 1.1% Cu, 1.2% Pb, 1.4% Zn,  
60.4 g/t Ag, 0.12g/t Au from surface

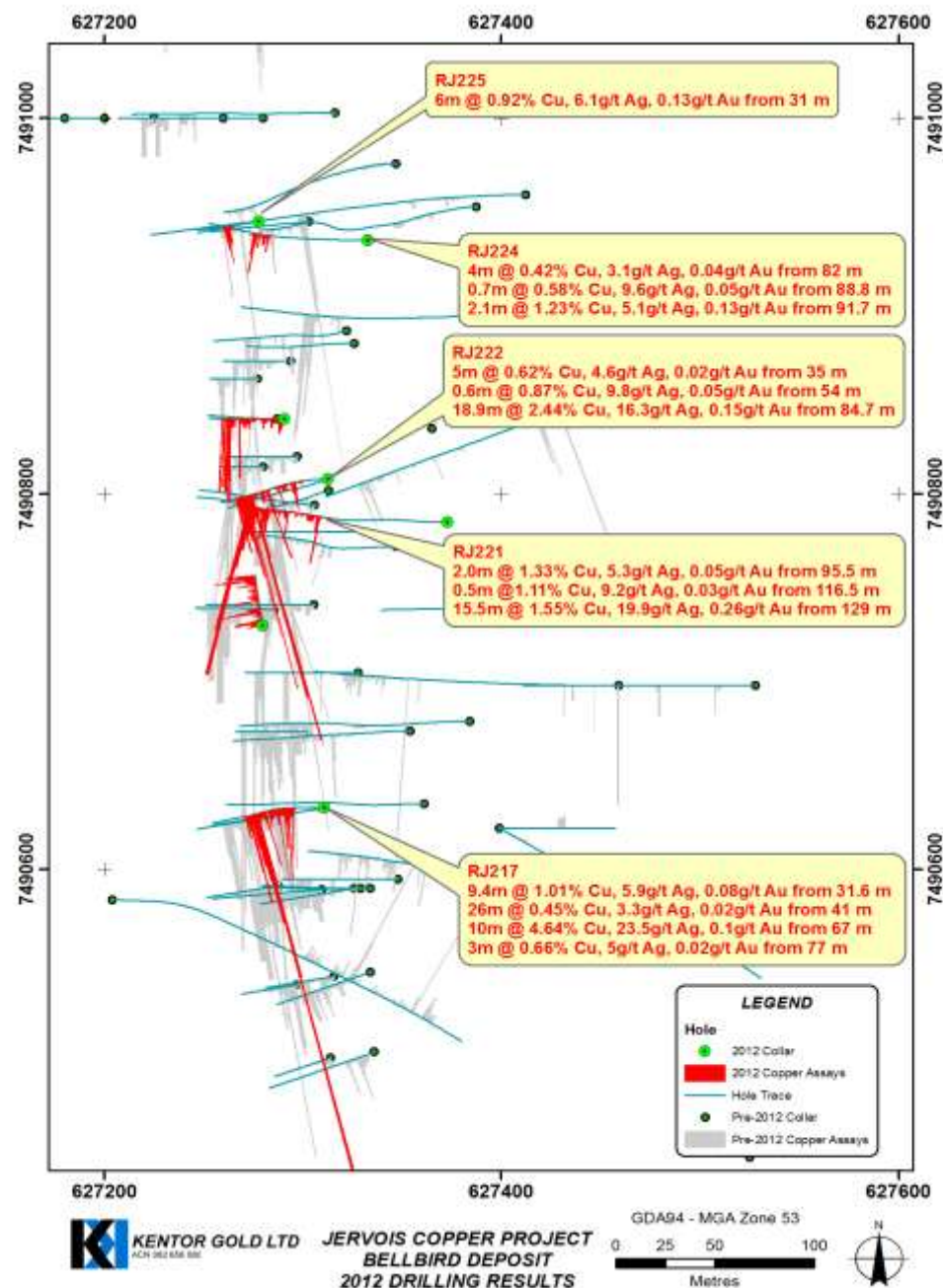
- Potential extension of Green Parrot



# Bellbird Results

## 2012 Exploration Results

- 18.9m @ 2.44 % Cu, 16.3 g/t Ag RJ222
- 15.5m @ 1.55% Cu, 28.5 g/t Ag RJ221
- 10m @ 4.64% Cu, 23.5 g/t Ag RJ217

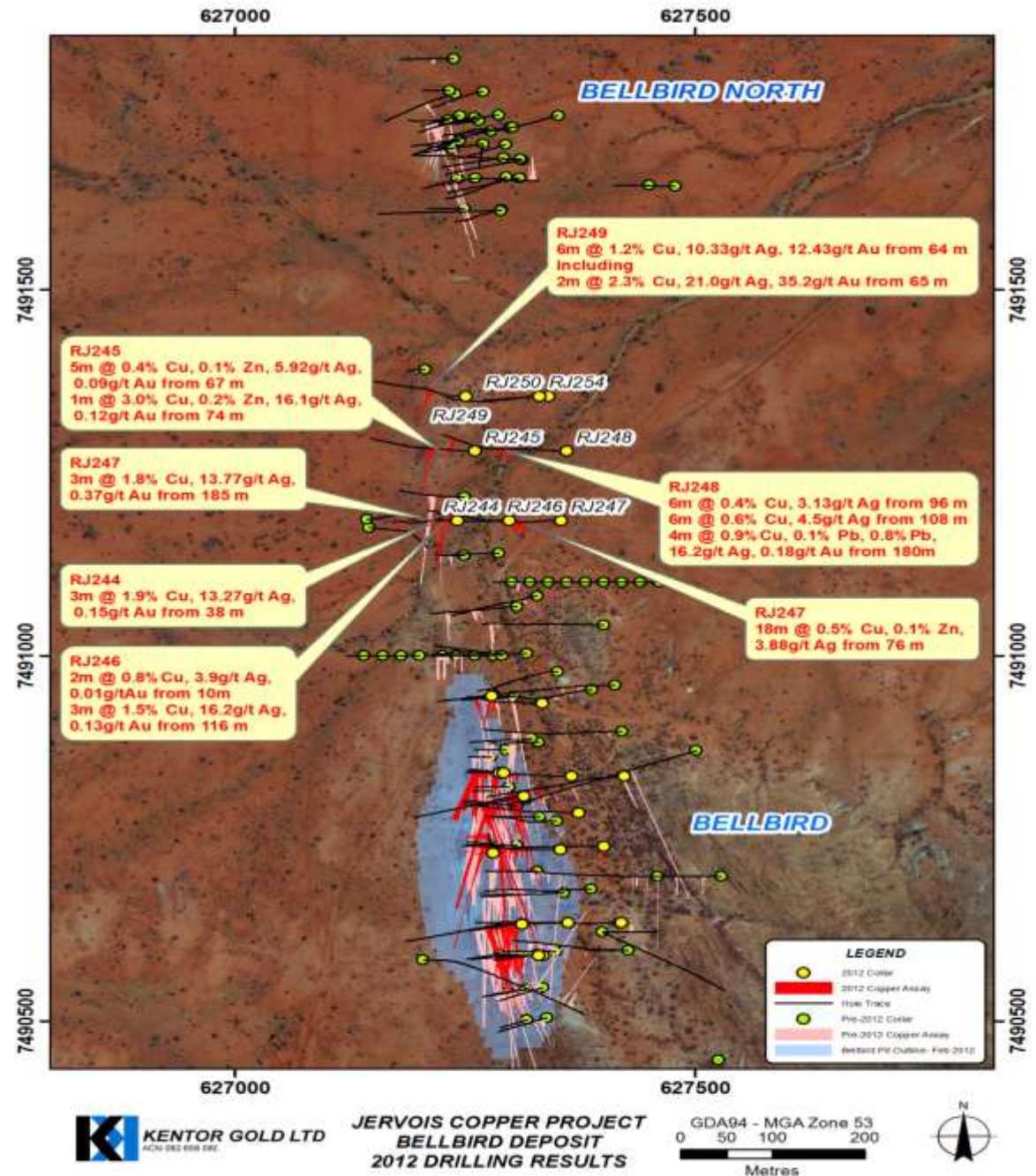




# Bellbird extension

6m @ 1.2% copper, 10.3g/t silver and **12.43g/t gold** from 64 m (down hole), including

2m @ 2.3% copper, 21g/t silver and **35.2g/t gold** from 65 m

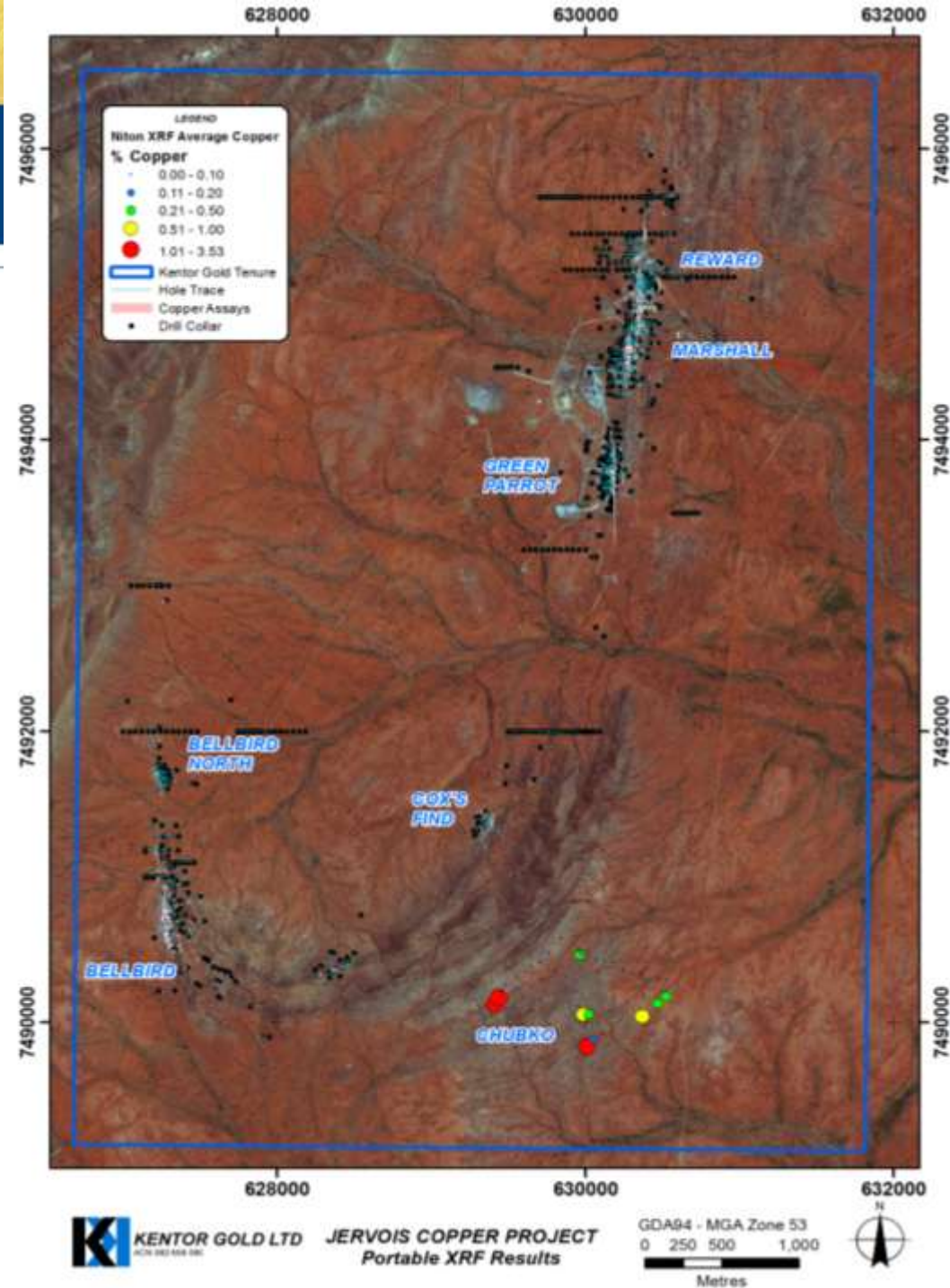


# Chubko Prospect

Discovered due to work conducted by the NTGS in collaboration with the CSIRO led Centre of Excellence for 3D Mineral Mapping

ASTER (Advanced Space-borne Thermal Emission and Refraction Radiometer)

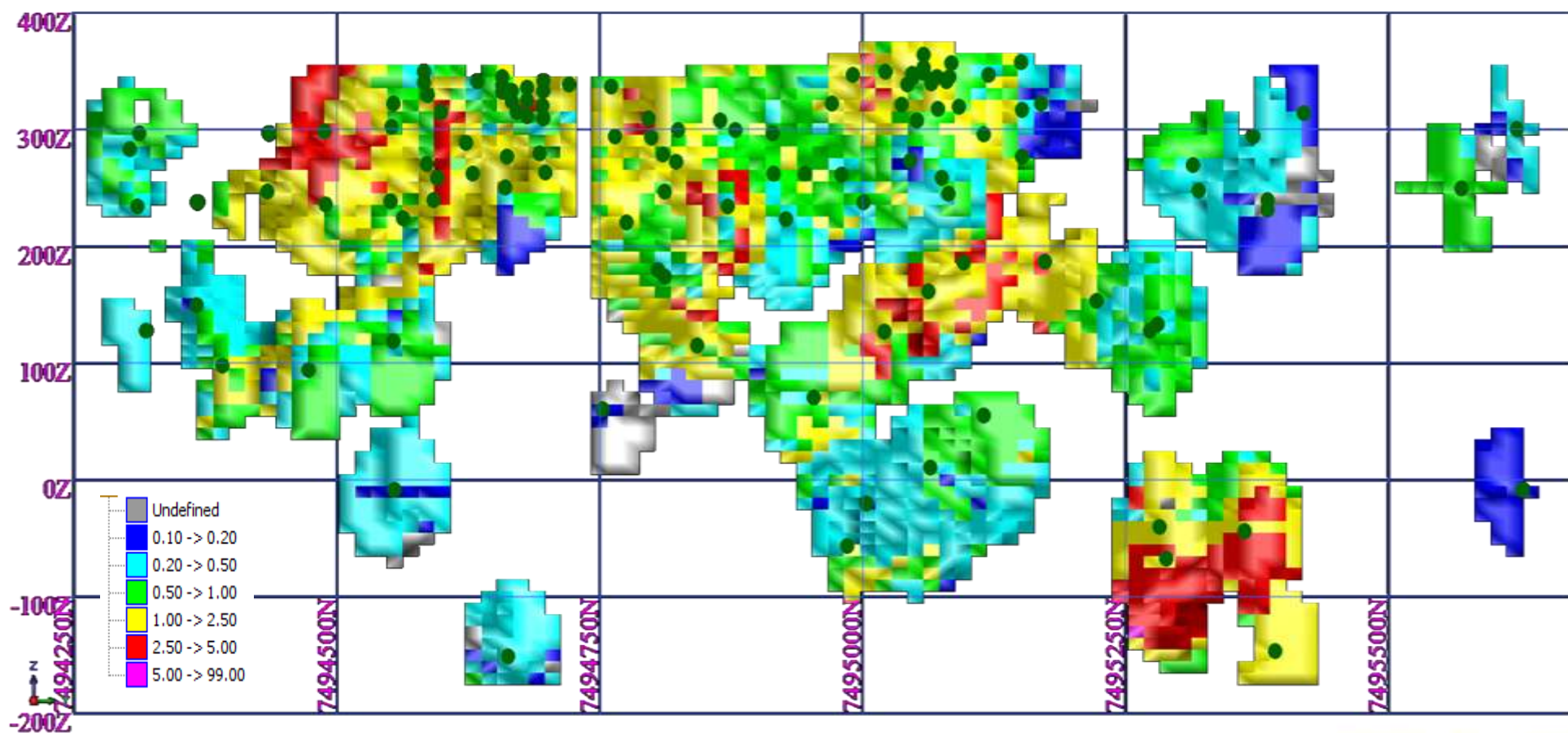
Area 1.3 km x 700m of anomalous copper and gold on surface





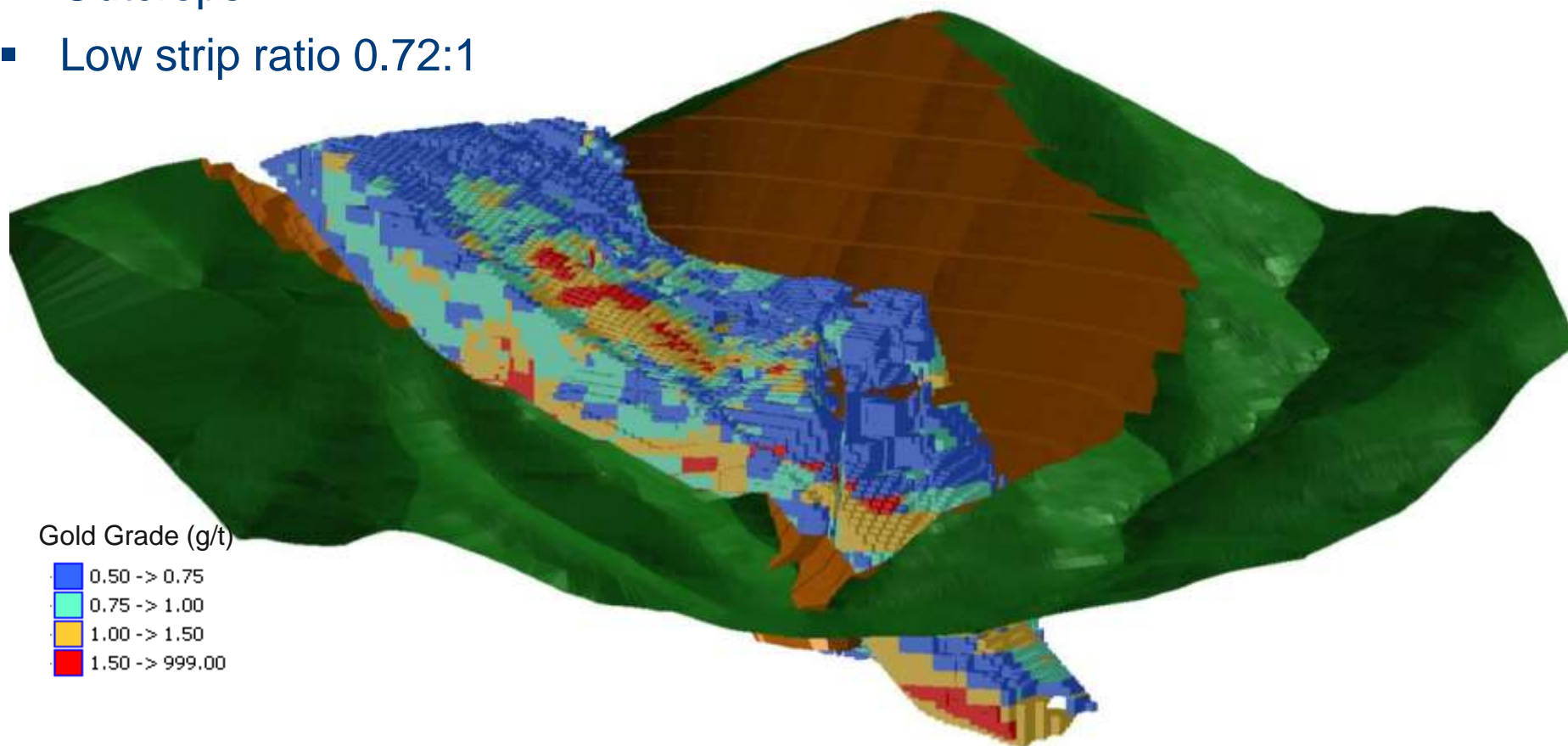
# Reward Ore Body Long Section

- Inferred Copper Resource of 11.9 Mt @ 1.3% Cu and 25.2 g/t Ag
- 150,500t of contained copper and 9.7 m oz contained silver



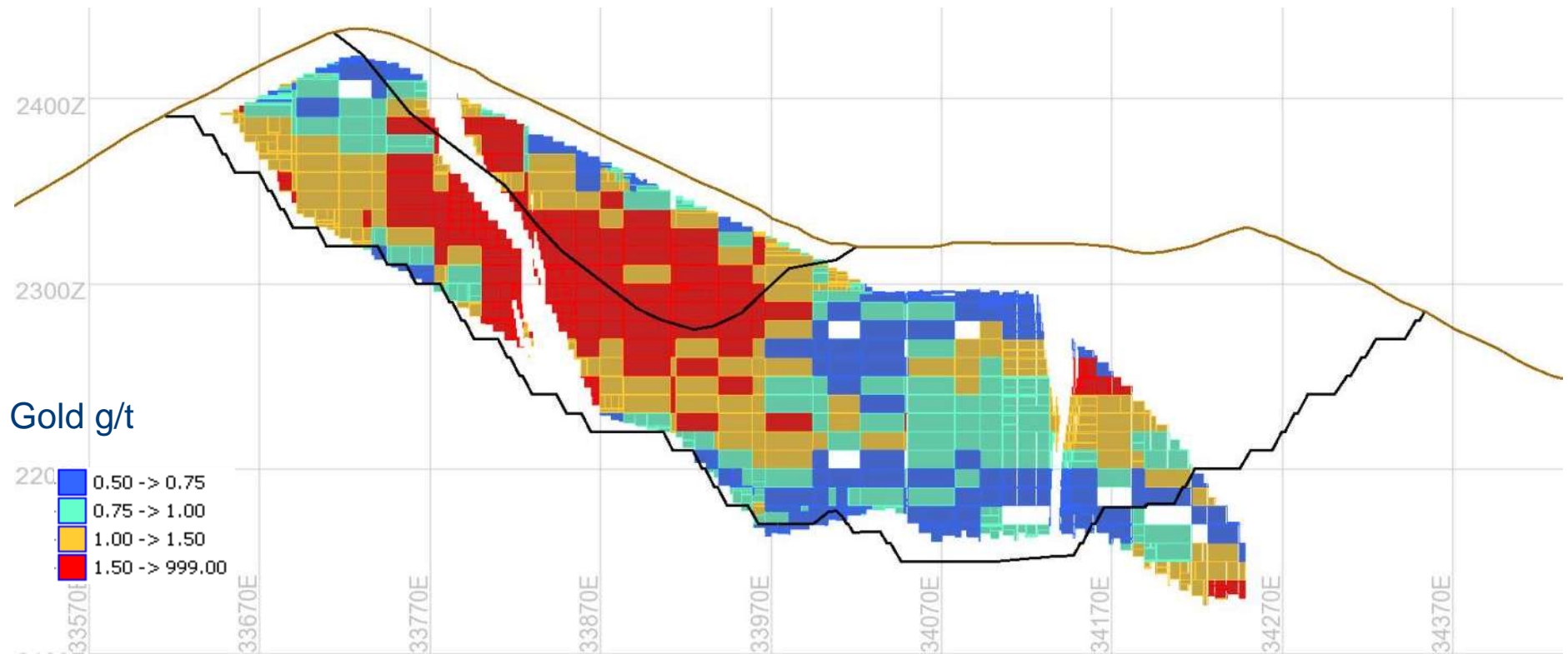
# Andash Open Pit and Ore Body

- Wide ore body, bulk mining
- Outcrops
- Low strip ratio 0.72:1






# Andash Long Section through Block Model

- Low strip ratio 0.7:1
- Base of pit follows footwall
- High grade starter pit





# Summary

- Murchison Gold Project  Ramping up Production
- Jervois Copper Project  Feasibility Study underway
- Andash Project  Government Interdepartmental Commission established to address the issues at Andash

# Disclaimer

## Competent Persons Statements

- The data in this report that relates to Mineral Resource Estimates for Jervois is based on information evaluated by Mr Simon Tear who is a Member of The Australasian Institute of Mining and Metallurgy (MAusIMM) and who has sufficient experience relevant to the style of mineralisation and type of deposit under consideration and to the activity which he is undertaking to qualify as a Competent Person as defined in the 2004 Edition of the Australasian Code for Reporting of Exploration Results, Mineral Resources and Ore Reserves (the “JORC Code”). Mr Tear is a full-time employee of Hellman & Schofield Pty Ltd and he consents to the inclusion in the report of the Mineral Resource in the form and context in which they appear.
- The Resource estimates for Andash in this report are based on information compiled by Dr. Phil Newall, who is a Chartered Engineer and Fellow of the Institute of Materials Minerals and Mining and a full time employee of Wardell Armstrong International. Dr. Newall has sufficient experience which is relevant to the style of the mineralisation and the type of deposit under consideration and to the activity to which he is undertaking, to qualify as a Competent Person as defined in the 2004 Edition of the Australasian Code for Reporting of Exploration Results, Mineral Resources and Ore Reserves. Dr. Newall has consented to the inclusion of this information in the form and context in which it appears in this report.
- The exploration data in this report relating to the Jervois project is based on information compiled by Rudy Lennartz, who is a member of the Australian Institute of Mining and Metallurgy and a full time employee of Jinka Minerals Ltd. Mr. Lennartz has sufficient experience which is relevant to the style of the mineralisation and the type of deposit under consideration and to the activity to which he is undertaking, to qualify as a Competent Person as defined in the 2004 Edition of the Australasian Code for Reporting of Exploration Results, Mineral Resources and Ore Reserves. Mr. Lennartz has consented to the inclusion of this information in the form and context in which it appears in this report.
- The information in this report that relates to exploration results for Murchison is based on work completed by Mr Keith Mayes who is a full-time employee of Kentor Gold Limited and a Fellow of the Geological Society of London. Mr Mayes has sufficient experience which is relevant to the style of mineralisation and type of deposit under consideration and to the activity which he is undertaking to qualify as a Competent Person as defined in the 2004 Edition of the ‘Australasian Code for Reporting of Exploration Results, Mineral Resources and Ore Reserves’. Mr Mayes has consented to the inclusion of this information in the form and context in which it appears in this report.

# For more information contact

Simon Milroy on +61 7 3071 9003  
or visit [www.kentorgold.com](http://www.kentorgold.com)

ASX Code: KGL

Level 9, 40 Creek Street,  
Brisbane, QLD, AUSTRALIA 4000

Fax: +61 7 3071 9008

**Forward-Looking Statements:**

This presentation includes certain “Forward-Looking Statements”. All statements, other than statements of historical fact, included herein, including without limitation, statements regarding forecast cash flows and potential mineralisation, resources and reserves, exploration results and future expansion plans and development objectives of Kentor Gold Limited are forward-looking statements that involve various risks and uncertainties. There can be no assurance that such statements will prove to be accurate and actual results and future events could differ materially from those anticipated in such statements.