

## ASX/MEDIA ANNOUNCEMENT

### FOLLOW-UP DRILLING INTERSECTS SIGNIFICANT GOLD & COPPER MINERALISATION

#### Fast Facts

Cap Structure	Sept 09
Issued Shares	306Mil
Market Cap	A\$19Mil
Cash + Investments	\$2.5Mil

#### Directors

Hamish Bohannan	Chairman
Steve Norregaard	Managing Dir.
Joe Totaro	Non-Exec Dir.
Andrew Czerw	Executive Dir.
Tony Martin	Non-Exec Dir.

#### Company Highlights

- Substantial resource inventory
- New recent gold discoveries
- Aggressive exploration
- Proven Management



#### PRP Resource Base

Resource tonnes ~	10.5Mt
Gold ounces ~	750,000
Silver Ounces ~	9.8Mil
Copper metal ~	85,000t
Lead metal ~	123,000t
Zinc metal ~	74,000t

#### Contact Details

Head Office  
Unit 46/328 Albany Hwy  
VICTORIA PARK  
WA 6100  
T: +61 8 6250 4600  
F: +61 8 6250 4699  
E: info@tectonic.com.au

#### Key Highlights

- Further drilling at the Gem Restored Prospect intersects additional significant gold and copper mineralisation.
- Intersections include:
  - **8m @ 3.71g/t Au, 0.3% Cu** from 77m
  - **2m @ 4.72g/t Au, 0.3% Cu** from 91m
  - **4m @ 3.32g/t Au, 0.4% Cu** from 111m
- Drilling confirms plunge of mineralisation which remains open at depth .
- Identified extension opportunities for the Kaolin Resource.
- Further exploration drilling to commence shortly.

Tectonic (ASX: TTR) is pleased to announce further RC drilling results from the Gem Restored Prospect, part of the 100% owned Phillips River Project.

Managing Director Steve Norregaard said "Our enthusiasm continues to grow with these results adding to the significance of the Gem Restored Prospect. The results follow the recent exploration success of **8m @ 18.8g/t Au, 1.3% Cu** as announced 25 June 2009. The sulphidic mineralisation intersected in the southern part of the prospect remains a focus for the geological team and we are all keen to see where this may lead us. We are gearing up to do more drilling here and at depth."

In addition to testing the immediate Gem Restored strike, drilling has extended the known structure 200m further South past the Kaolin deposit. This drilling identified a wide alteration package (20 to 30m true width) of weak to moderately sulphidic and quartz vein hosting dacite, identical to the Kaolin deposit host sequence. Anomalous mineralisation within the sequence includes **2m @ 4.36g/t Au from 56m, and 1m @ 7.82g/t Au, 0.4% Cu from 79m**. This opens up an exceptional target zone which up until now has remained untested by drilling (see figures 1 & 2).

The structural significance of this area cannot be understated. There are three mineralised structure converging here, none of which have been tested in this particular location.

The Gem Restored Prospect is part of a group of deposits at Kundip all within 2km of each other (refer figure 3), which has an existing JORC Resource of 4.2Mt @4.3g/t gold and 0.5% copper for 590,000 ounces gold and 20,000t of copper.

The company is currently undertaking the necessary environmental approvals and will commence drilling immediately once they have been received.

For further information please contact:

Steve Norregaard

Managing Director

(08) 6250 4600

[steve.norregaard@tectonic.com.au](mailto:steve.norregaard@tectonic.com.au)

-ENDS-

### Competent Person's Statement

*The information in this report that relates to Exploration Results and Mineral Resources is based on information compiled by Mr Bruce Armstrong who is a Member of the Australasian Institute of Geoscientists. Mr Armstrong is a full time employee of Tectonic, and has sufficient experience which is relevant to the style of mineralisation under consideration to qualify as a Competent Person as defined in the 2004 edition of the JORC Code. Mr Armstrong has given his consent to the inclusion in the report of the matters based on the information in the form and context in which it appears.*

*"This release may contain forward-looking statements. Forward-looking statements address future events and conditions and therefore involve inherent risks and uncertainties. Actual results may differ materially from those currently anticipated in such statements."*

GEM RESTORED PROSPECT- SIGNIFICANT DRILL RESULTS- OCTOBER 2009										
Hole ID	Depth From (m)	Depth To (m)	interval (m)	Au (g/t)	Cu (%)	local_N (m)	local_E (m)	Local Azi (degrees)	dip (degrees)	Comments
RC09KP621	1	3	2	1.28	0.1	657	-25	94	-61	
	208	209	1	1.40	0.0					
RC09KP623	39	40	1	1.78	0.0	861	193	96	-59	Gem Restored Main
RC09KP626 includes	77	85	8	3.71	0.3	981	222	104	-82	Gem Restored Main
	77	81	4	5.08	0.3					
RC09KP631	30	31	1	1.51	0.1	702	174	102	-59	Gem Restored Main
RC09KP633	25	26	1	1.50	0.0	603	145	95	-59	Gem Restored Main
	79	80	1	7.82	0.4					
	92	93	1	1.08	0.1					
RC09KP634	22	23	1	1.79	0.0	601	94	102	-59	Kaolin series
RC09KP635	12	13	1	4.56	0.0	790	212	114	-78	Gem Restored Main
	25	28	3	1.04	0.3					
RC09KP641	40	41	3	1.26	0.0	542	143	96	-85	Gem Restored Main
	56	58	2	4.36	0.1					
RC09KP642	77	78	1	1.83	0.0	542	148	89	-60	Kaolin series
RC09KP643	77	78	1	1.56	0.3	614	179	83	-60	Kaolin series
RC09KP647	91	93	2	4.72	0.3	936	209	110	-84	Gem Restored Main
	111	115	4	3.32	0.4					
	119	120	1	1.03	0.0					
RC09KP648	20	22	2	3.94	0.1	412	18	86	-59	
	97	98	1	3.64	0.0					

Table 1: RC Drill Results >1g/t Au. August 2009

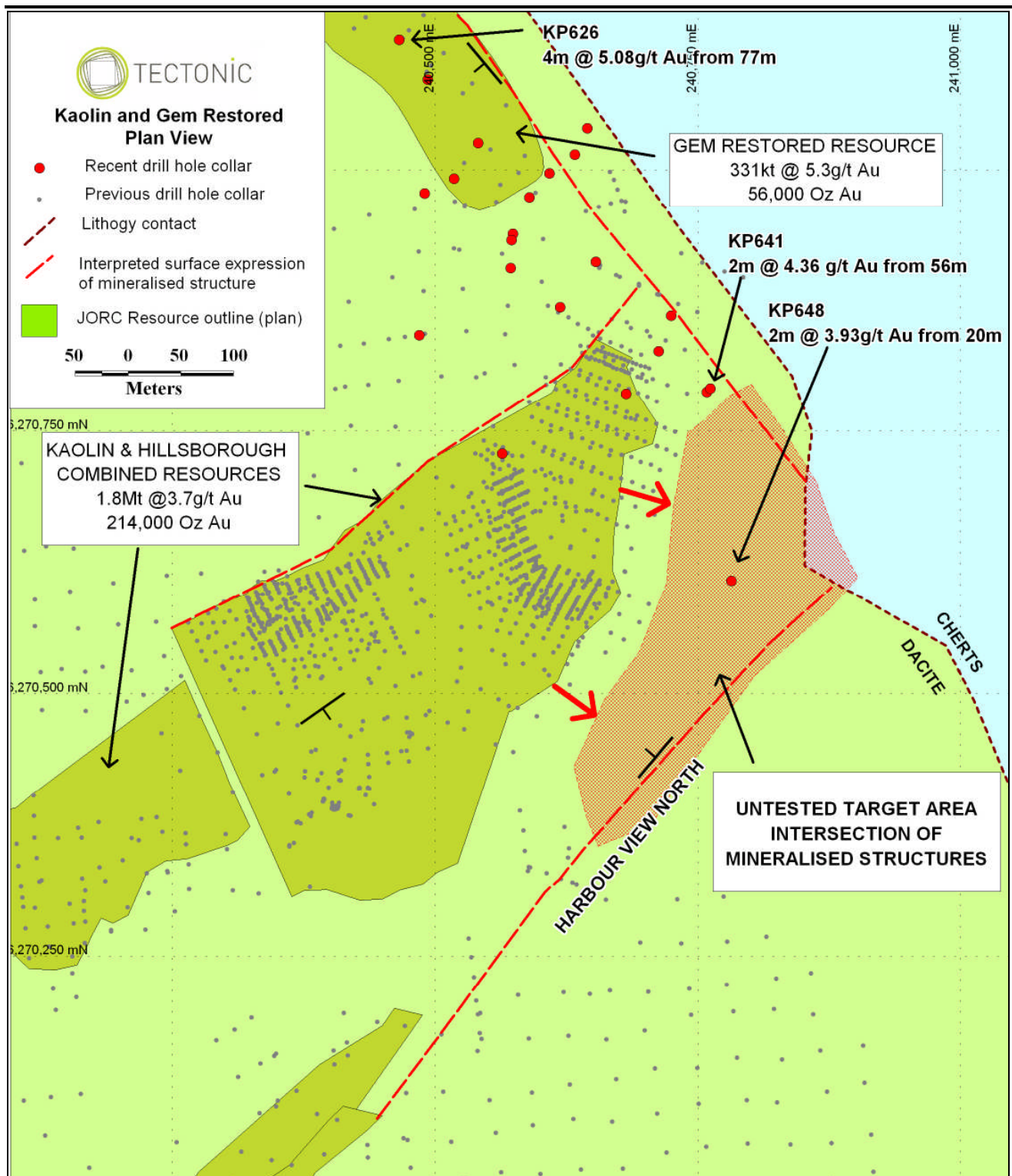


Figure 1: Plan view showing target area previously untested by drilling.

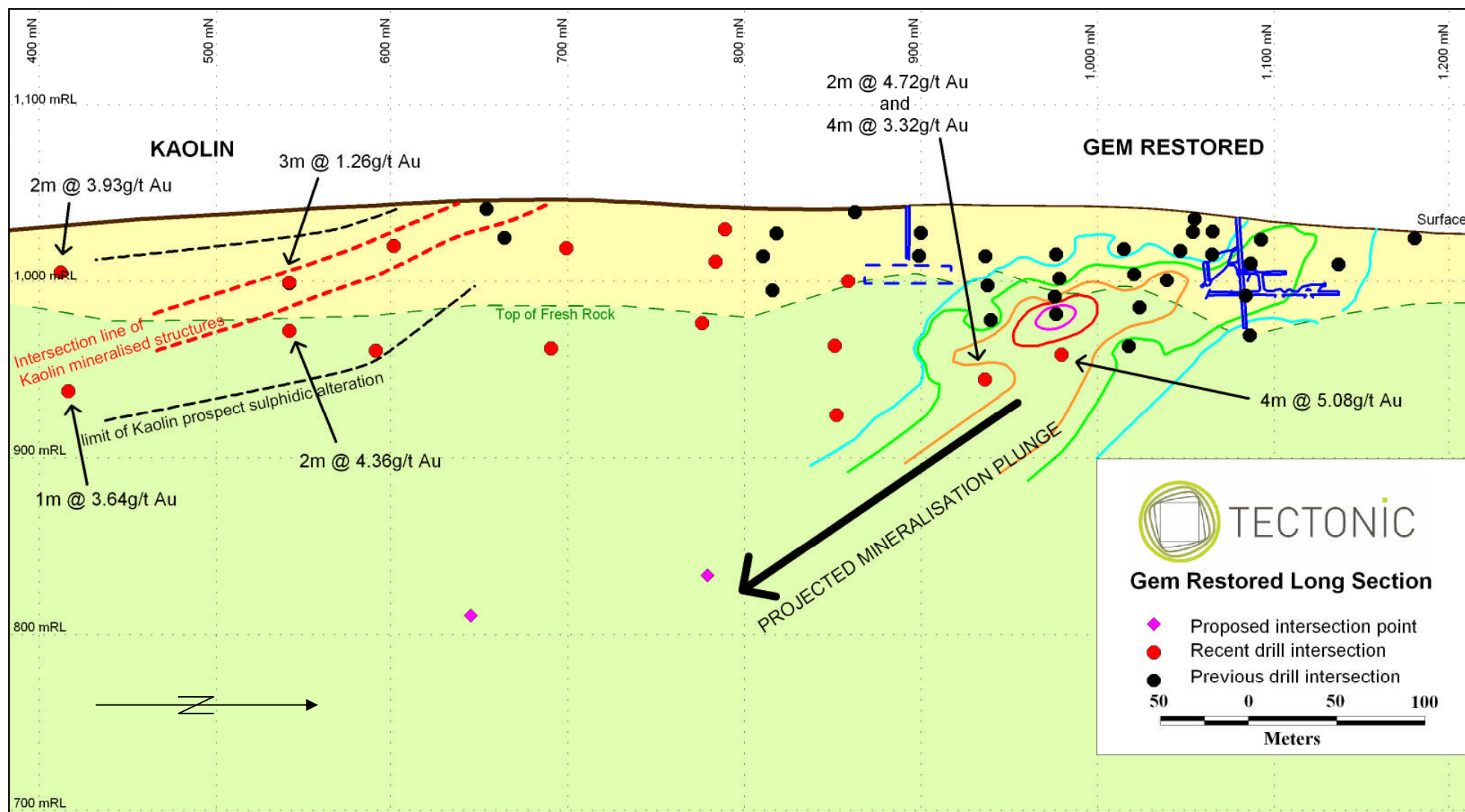


Figure 2: Gem Restored Long Section showing recent drilling results & locations→. North-south, looking west.



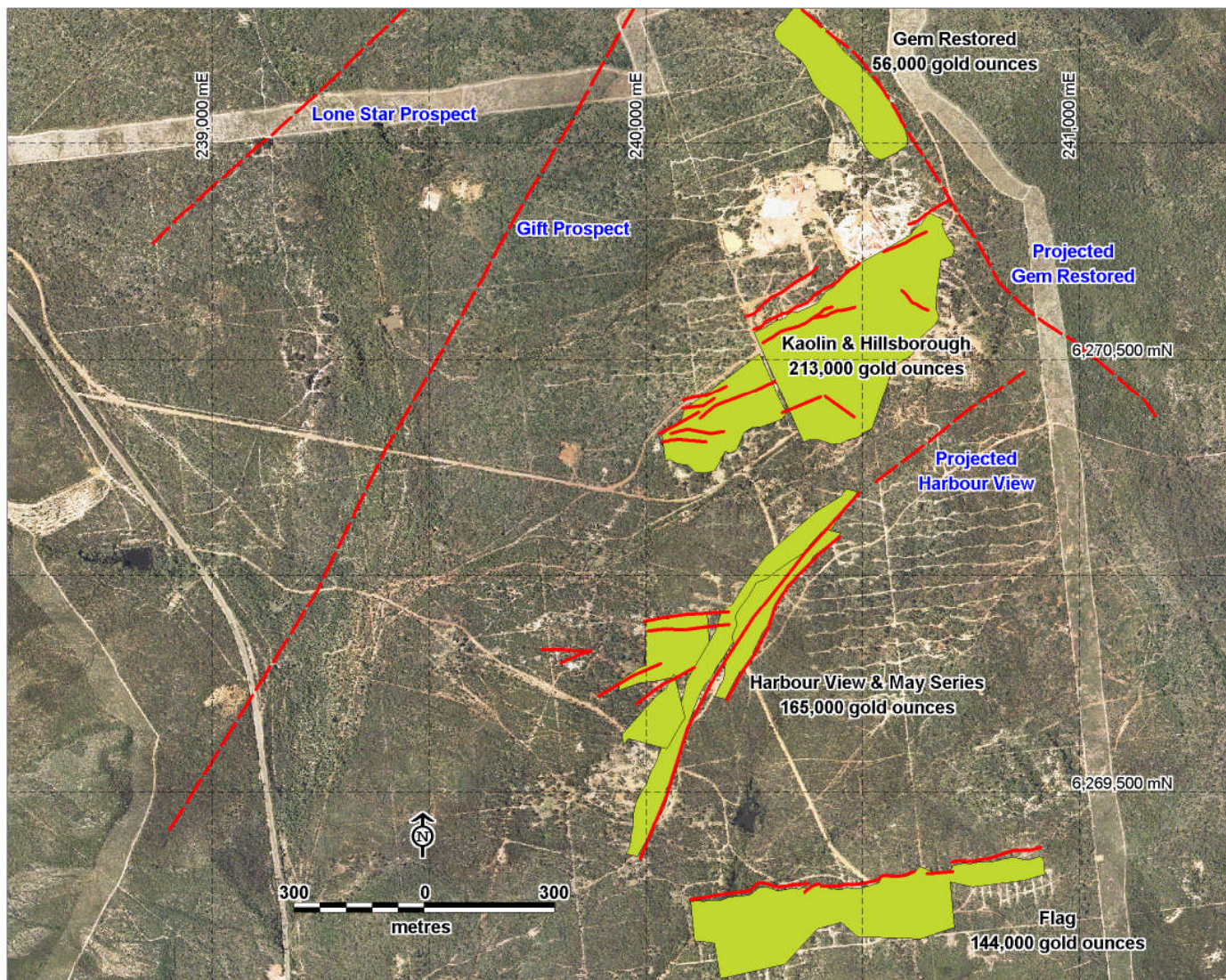


Fig 3- Kundip JORC Resource Surface projections and Mineralised structures