



# Cluff Resources Pacific NL

BN 72 002 261 565

23 July, 2009

The Manager (Companies),  
Australian Stock Exchange,  
Sydney

Dear Sir,

## OLD TUNNELS EXPOSED ON MONTE CHRISTO LEASE, BINGARA

Old tunnels with wooden roof supports and backfilled with waste rock from the mining operation have been exposed on the former Monte Christo mining lease (ML 16) beneath drill hole MCR 26. Early this month this hole was interpreted as penetrating old workings between 5.9 to 7.8 metres.

Bulk Sample Pit B MC 3 has been dug over this hole, and eleven gem quality diamonds have been recovered from a thirty tonne bulk sample). Total weight of diamonds recovered was 2.07 carats.

Interestingly, two black stones together weighing 2.48 carats and tentatively identified as carbonado, a finely crystalline, porous form of diamond, were also recovered. These stones stuck to the grease table and tested as diamonds with the "Presidium Gem Tester", which measures thermal conductivity, but left a red streak on a porcelain tile. Carbonado has been previously reported from the Inverell Diamond Fields Mine at Copeton. Small pieces of sapphire and topaz were also recovered.

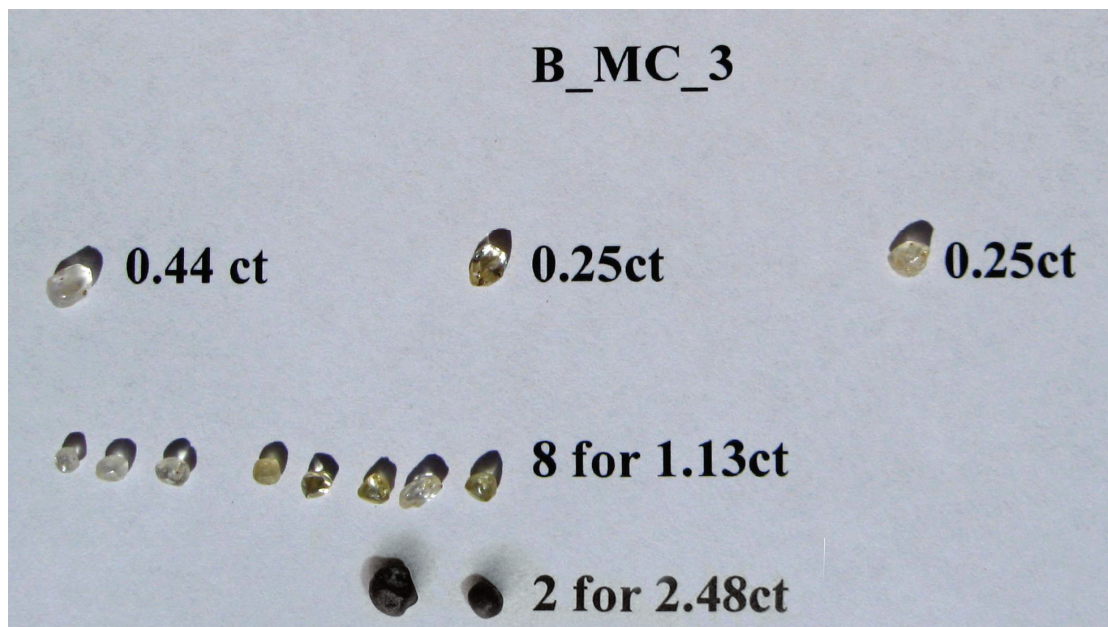


Figure 1: Diamonds and Carbonados recovered from Pit MC 3

Registered Office:  
1/30 Leighton Place,  
Hornsby NSW 2077,  
Australia  
ASX Code: CFR

Postal Address:  
Locked Bag 3355,  
Hornsby NSW 2077,  
Australia

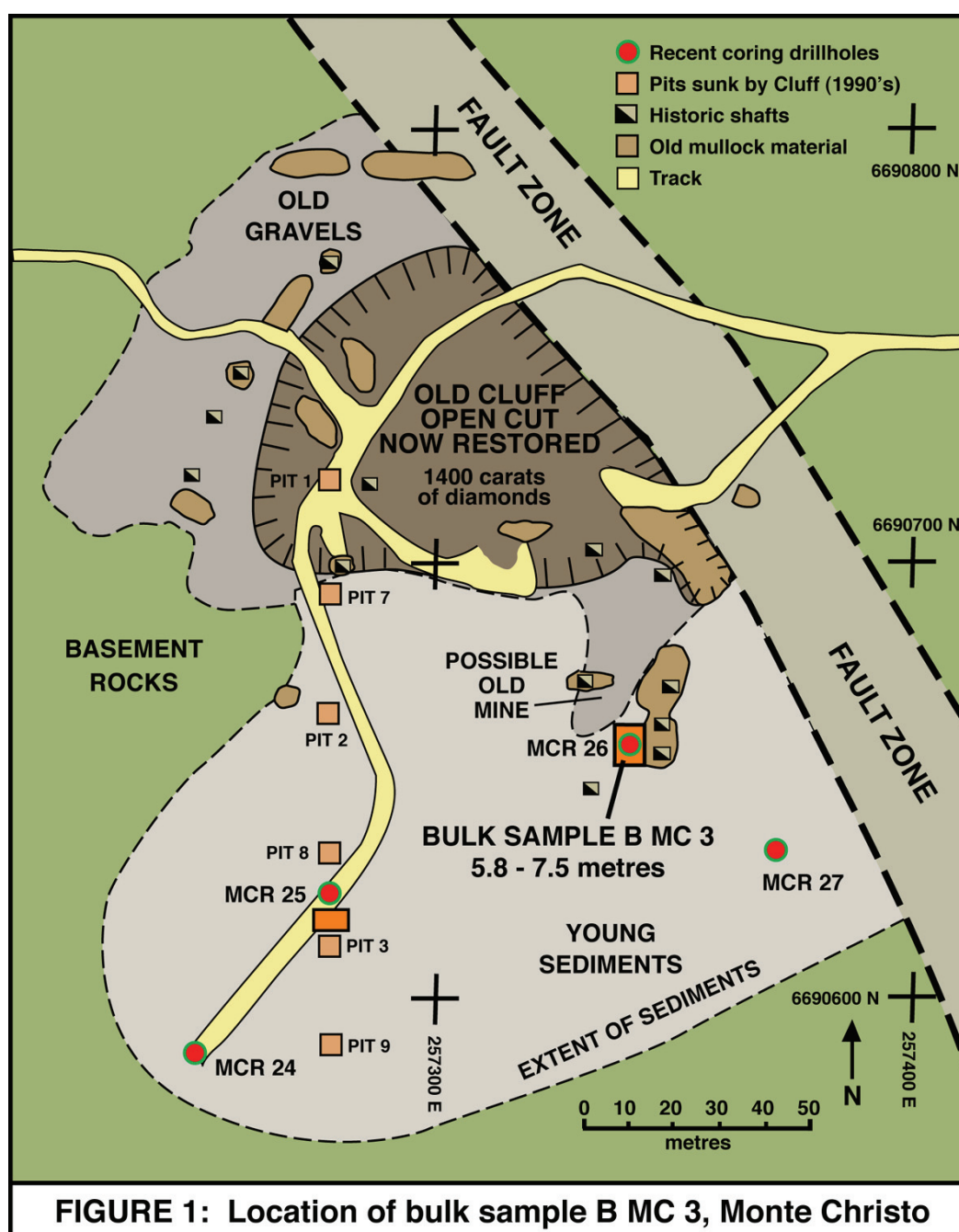
Tele-Communications:  
Tel: (612) 9482 4655  
Fax: (612) 9482 4987  
email: [Cluff@bigpond.com](mailto:Cluff@bigpond.com)  
Internet: [www.cluff.com.au](http://www.cluff.com.au)



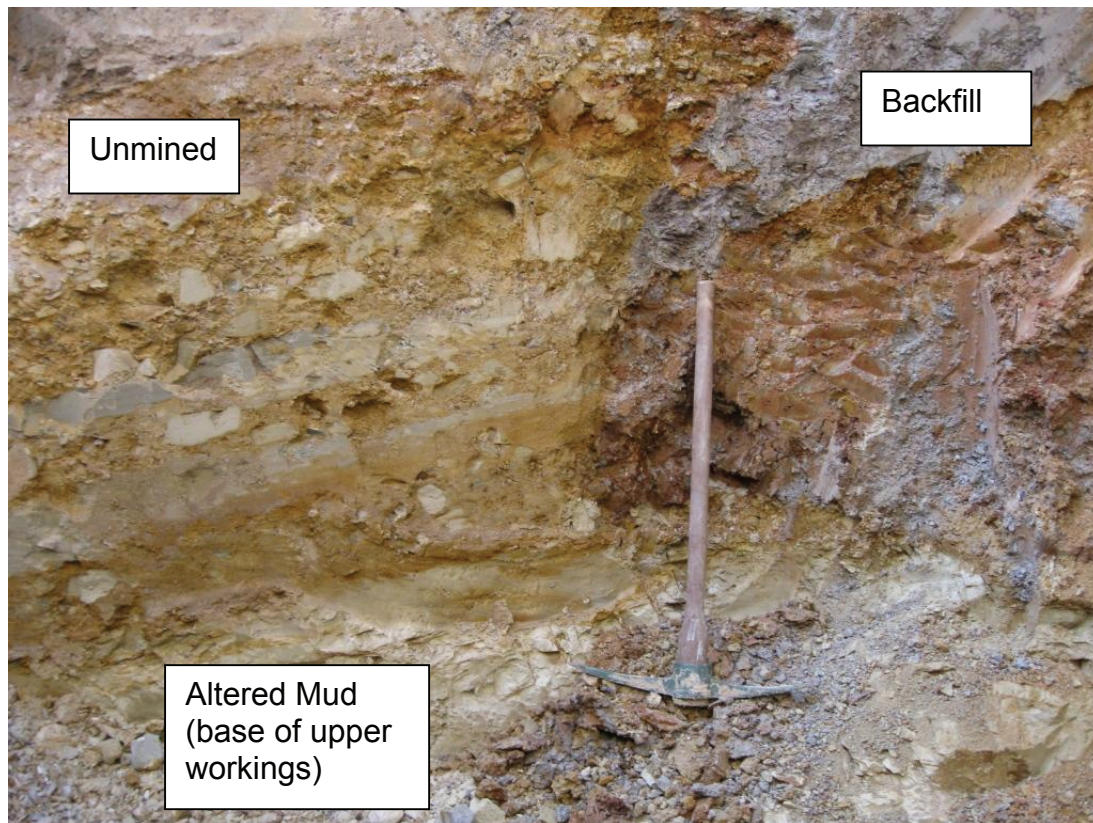
The unmined remnants of the diamond bearing rocks were a poorly sorted sediment containing rounded polished jasper pebbles, fine sand, and several beds containing larger pieces of altered bedrock.

The sample processed was extremely contaminated. The tunnels had taken out most of the diamond bearing rock, and as the old workings were not clearly apparent until the excavation was complete, this rock was again contaminated with underlying and overlying rubble. It is estimated that 10 to 20% of the rock trucked was diamond bearing, hence a grade cannot be determined.

A deeper pit is planned to accurately sample this rock, and also to sample a lower level of workings, interpreted from Hole MCR 26 to be present in a 2.8 metre bed above the hard basement at 13.5 metres.







**Figure 2: Mined Horizon, showing an old tunnel backfilled with rubble, and the original unmined rocks. The pick is near the edge of the tunnel.**

The information in this report that relates to exploration results is based on information compiled by Peter John Kennewell, who is a corporate member of the Australasian Institute of Mining and Metallurgy included in a list promulgated by the ASX from time to time. Peter John Kennewell is a full time employee of Cluff Resources Pacific NL and has sufficient experience which is relevant to the style of mineralisation and type of deposit under consideration and to the activity which he is undertaking to qualify as a competent person as defined in the 2004 Edition of the "Australasian Code for Reporting of Exploration Results, Identified Mineral Resources, and Ore Reserves". Peter John Kennewell consents to the inclusion in this report of the matters based on his information in the form and context in which it appears.

For further information contact:

Scott Enderby on Phone (02) 9482 4655

Email: [Cluff@bigpond.com](mailto:Cluff@bigpond.com) or

Peter Kennewell on Phone: (02) 9482 4655

Yours faithfully,

Peter Kennewell,  
Managing Director