

MINERAL AND COAL INVESTMENTS PTY LTD (MCI)

Outline of Exploration Areas

MINERAL AND COAL INVESTMENTS PTY LTD

AREA SUMMARY

Number and Total Area

12 Areas
756 Sub-blocks
2330 km²

Distribution

Cooktown in the north to Texas in the south

Geological Setting

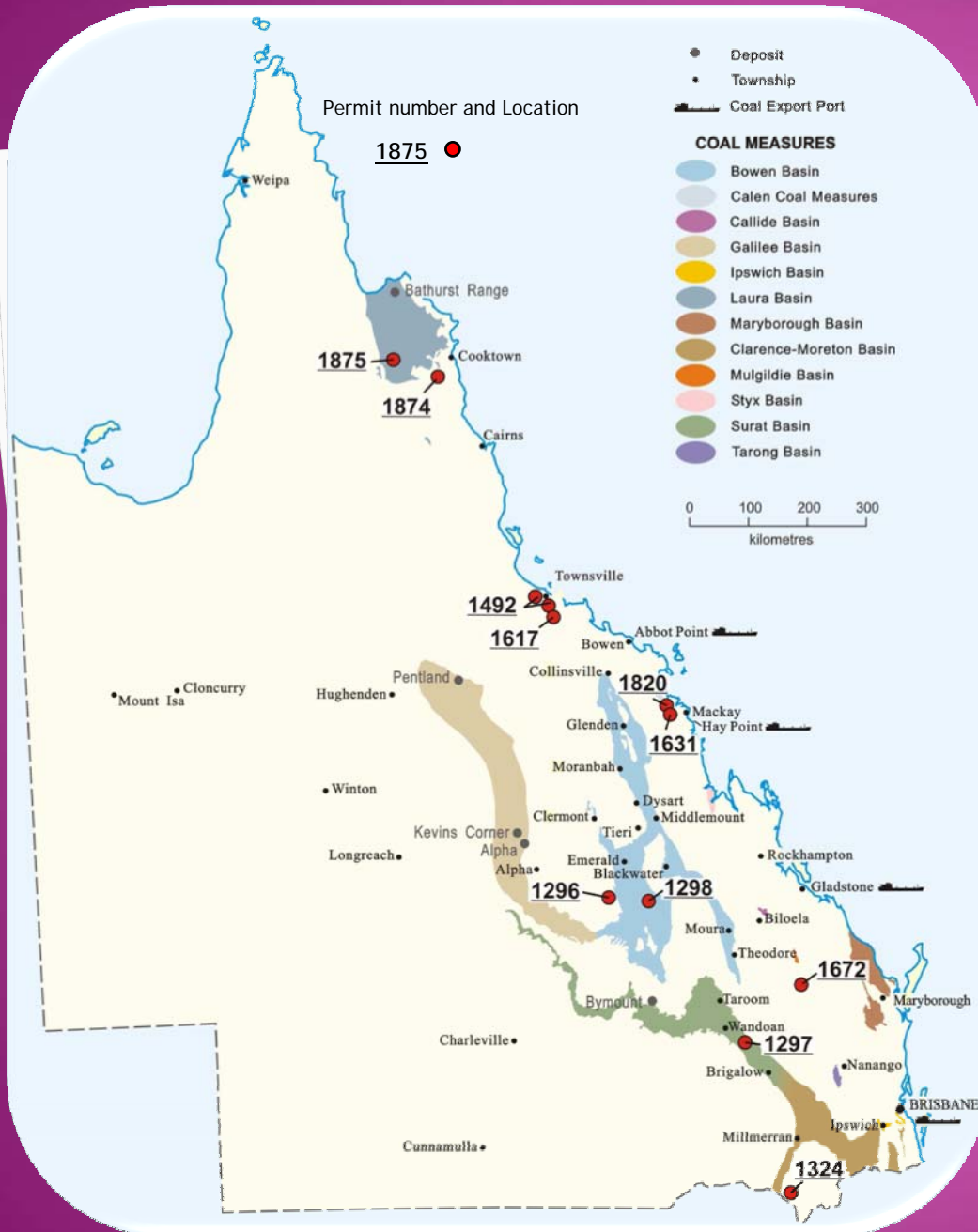
Laura Basin
Townsville Basin
Calen Basin
Bowen Basin
Mulgildie Basin
Surat Basin

Exploration Potential

Varies from areas with known coal to frontier exploration areas

Targets

Underground and open cut
Export thermal and coking coal



EPC 1296 CONNEMARRA

Location

65 km SSE of Emerald

40 Sub-blocks (123 km²)

Status

Granted

Surface

Freehold

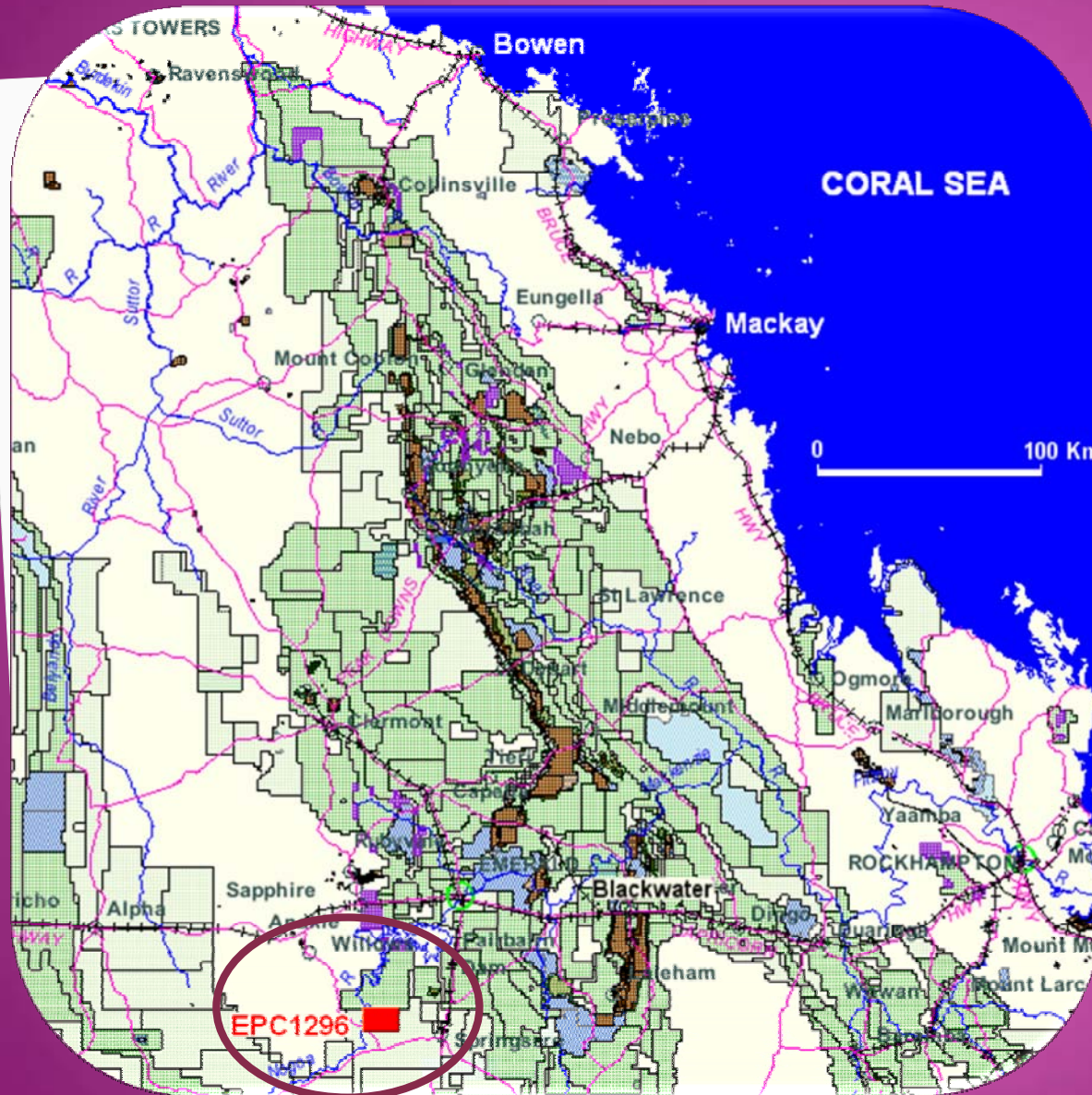
Work programme

\$75K 2 years

Geology and Exploration

SW Bowen Basin

Contains formations known to be coal bearing elsewhere
No significant previous exploration



AGE	GEOLOGICAL UNIT				
CONNEMARRA AREA			SPRINGSURE AREA		
Drummond Basin			Bowen Basin		
Tertiary	BASALT		BASALT		
	Fluvial & Lacustrine Sediments		Fluvial & Lacustrine Sediments		
Unconformity			Unconformity		
PERMIAN	COLINLEA SANDSTONE		Peawaddy Formation		
			Catherine Formation		
			Ingelara Formation		
			Freitag Formation		
			ALDEBARAN FORMATION		
Unconformity			Colinlea Sandstone		
Unconformity			Cattle Creek Formation		
PERMIAN	JOE JOE FM.	Jochmus Fm.	REIDS DOME BEDS		
		Jericho Fm.	Unconformity		
UNDIFF. CARBONIFEROUS			UNDIFF. BASEMENT		
			Coal Bearing	Coal Bearing Potential	

EPC 1296 CONNEMARRA EXPLORATION TARGET

Target Sequence

Basal Colinlea Sandstone
Jochmus Sandstone

Target Coal Type

Thermal Coal

Mining Potential

Most likely underground but has open cut possibilities

EPC 1297 BACK CREEK

Location

45 km SE of Wandoan
20 Sub-blocks (62km²)
Near "missing link" to Gladstone

Status

Application

Surface

Primarily State Forest

Work programme

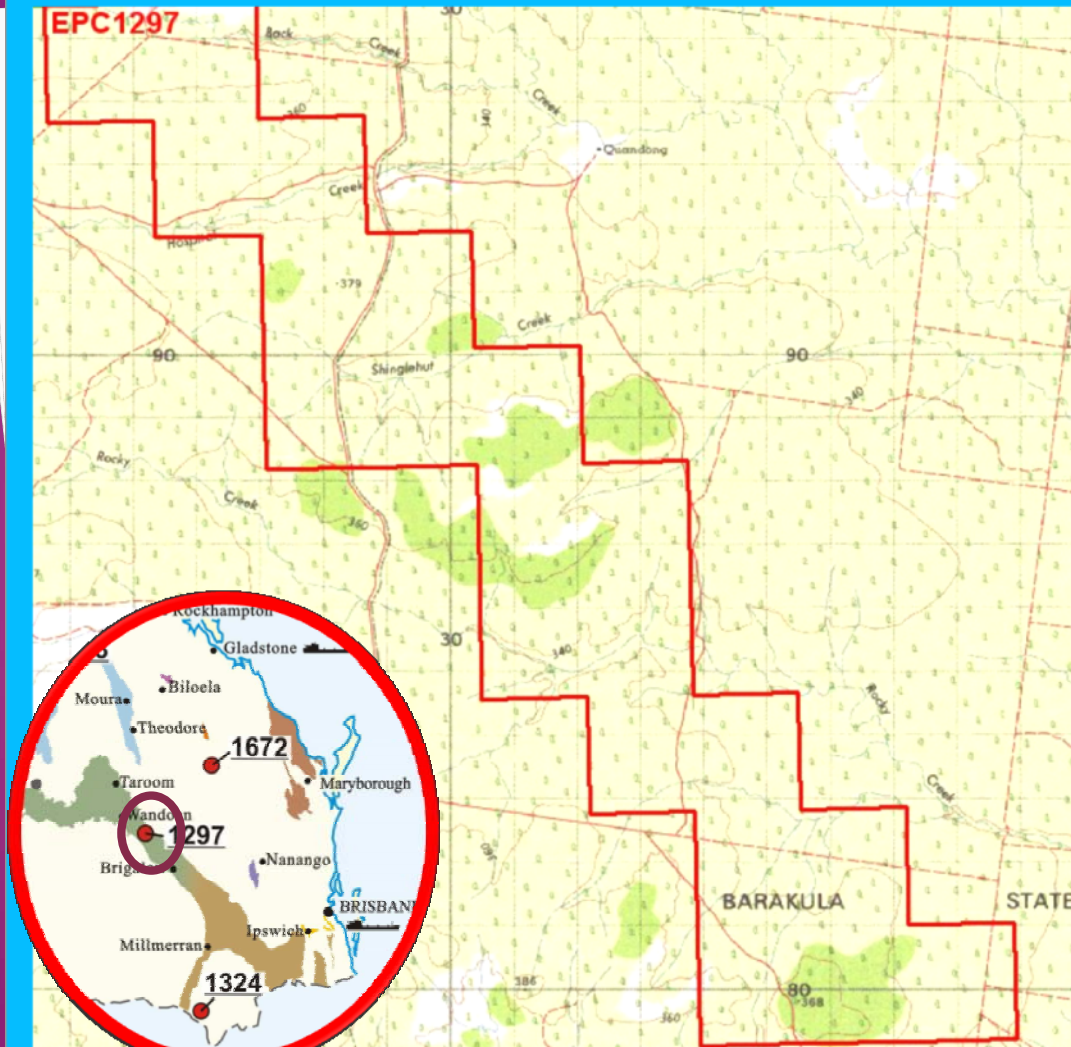
\$75K 2 years

Geology and Exploration

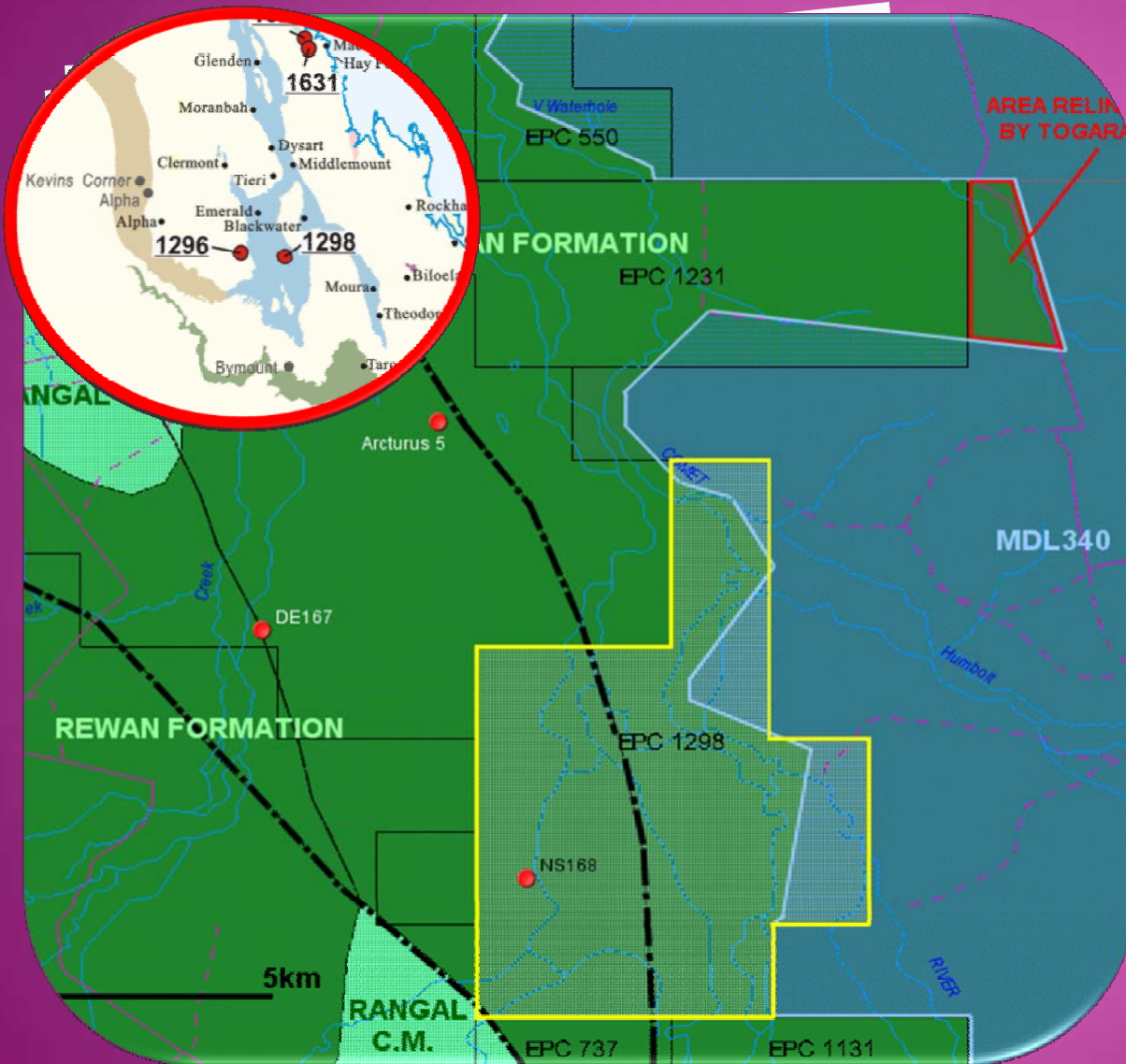
Eastern Surat Basin
Taroom Coal Measures
20 km of strike length
Limited previous exploration
At least one seam ± 5 m thick
Domestic and export thermal coal

Resource Potential

Up to 59Mt estimated
Mined by open cut



EPC 1298 KILMAIN



Location

75 km SE of Emerald
16 Sub-blocks (50 km²)

Status

Granted

Surface

Freehold

Work programme

\$75K 2 years

Geology and Exploration

SW Bowen Basin

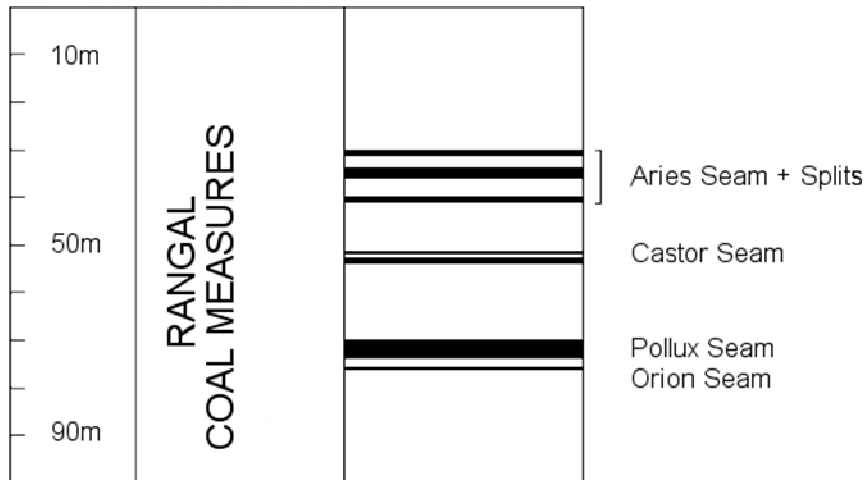
Underground Rangel Coal
Measures

Limited previous exploration

Principal Stratigraphic Units

AGE	GEOLOGICAL UNIT
Quaternary	Alluvial Silts and Sands
Tertiary	UNDIFFERENTIATED SEDIMENTS
Unconformity	
Triassic	REWAN FORMATION
Permian	RANGAL FORMATION

Likely Coal Seam development



EPC 1298 KILMAIN

Previous Exploration

One hole NS168 - six seams
0.3m to 1.89m thick
At depths of 419 to 503m

Exploration Potential

Substantial underground resource (Pollux Seam)
Low ash soft coking or thermal coal
Probably shallow dips, limited faulting

TOGARA NORTH AREA COAL QUALITY	
Air Dried Basis	%
Moisture	6 - 7
Row Ash	11 - 12
Volatile Matter	28 - 29
Fixed Carbon	50.5
Tot. Sulphur	0.4 - 0.5
(MJ/kg)	
Energy (gad)	27.5



EPC 1324 LINALLIE

Location

230km SW Of Brisbane
42 Sub-blocks (117 km²)

Status

Application

Surface

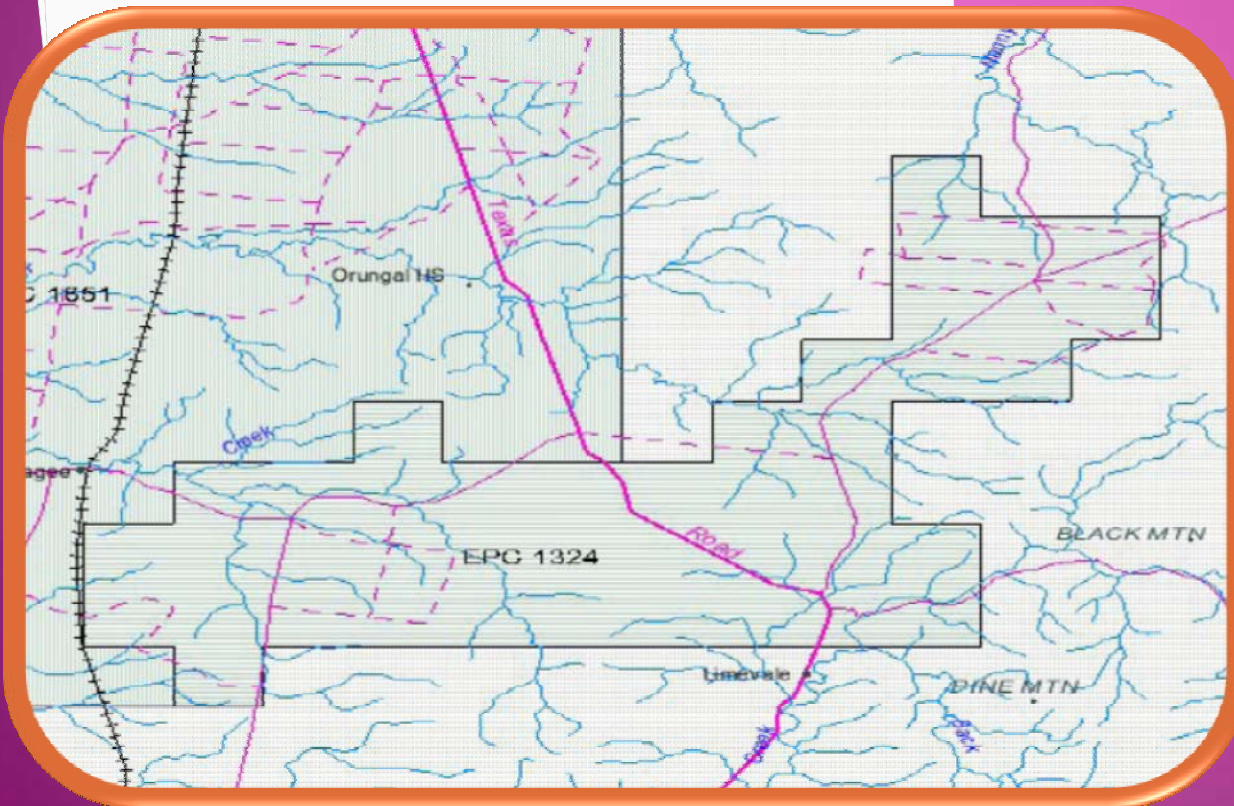
State Forest and Freehold

Work programme

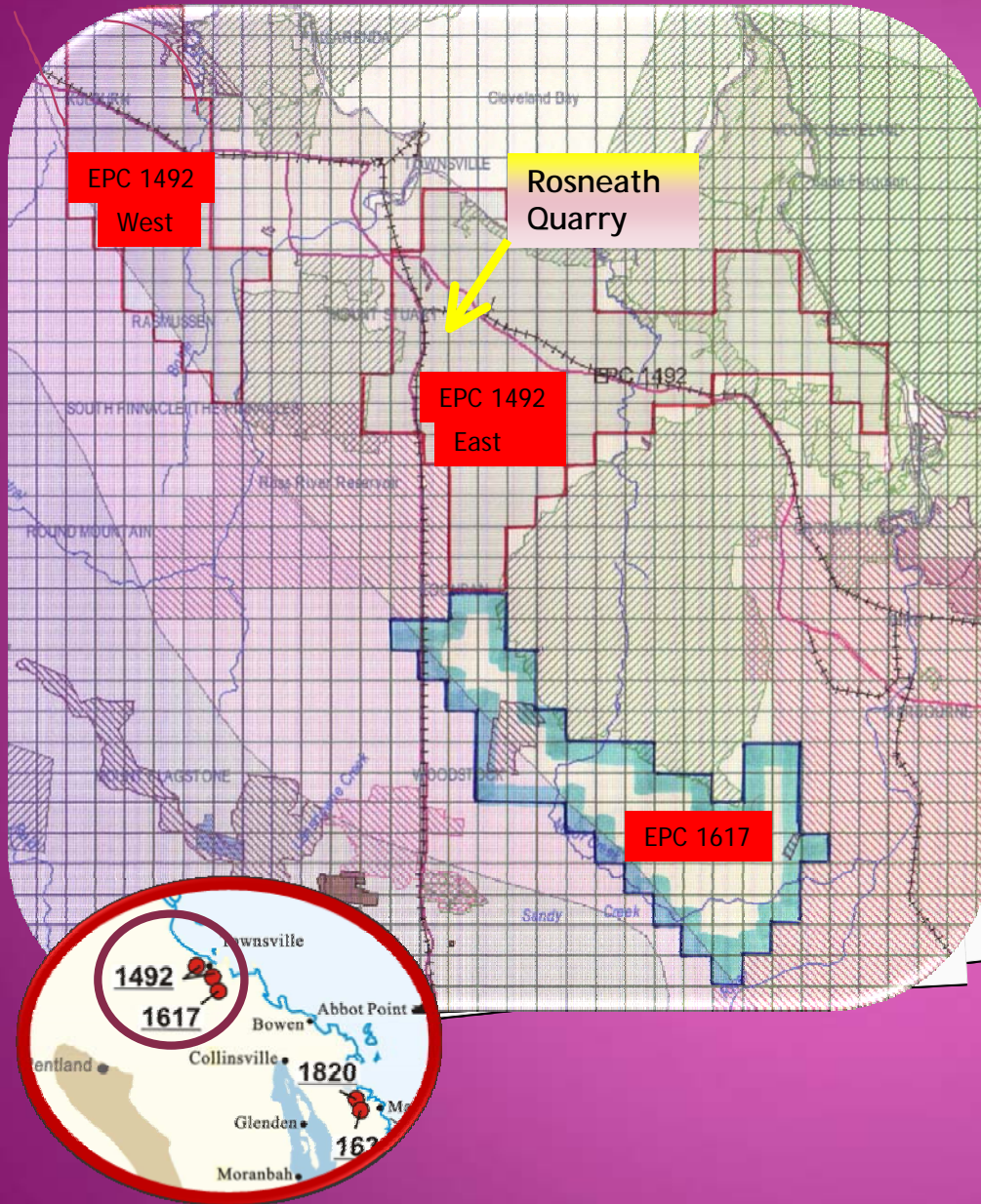
\$282K 2 years

Geology and Exploration

Southern Surat Basin
Walloon Coal Measures
Possible Permian Ashford Coal Measures Equivalent?
Thermal and coking coal
Limited previous exploration



EPC 1492 & 1617 TOWNSVILLE & TOWNSVILLE EXTENDED



Location

West and South of Townsville
T 154 Sub-blocks (477 km²)
TE 65 Sub-blocks (202 Km²)

Status

T Application
TE Granted

Surface

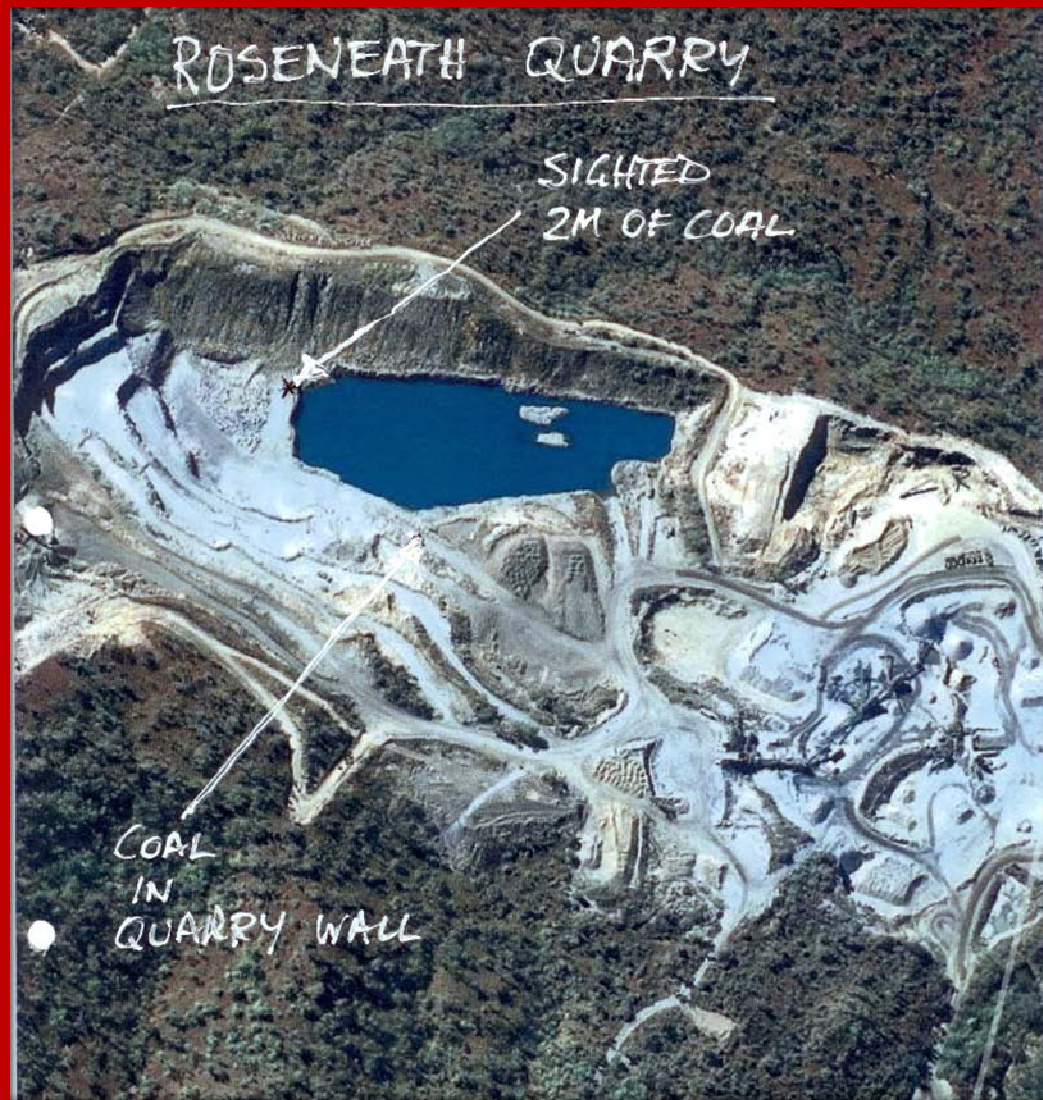
Primarily Freehold

Work programme

T \$475K 5 years
TE \$475K 5 years

Geology and Exploration

Northern extension of Bowen Basin
Very limited previous exploration
Known Permian coal occurrences up to 2m
Possibly coking coal



EPC 1492

COAL OUTCROP
IN ROSENEATH
QUARRY

B 17 Sub-blocks (53 km²)

B Application

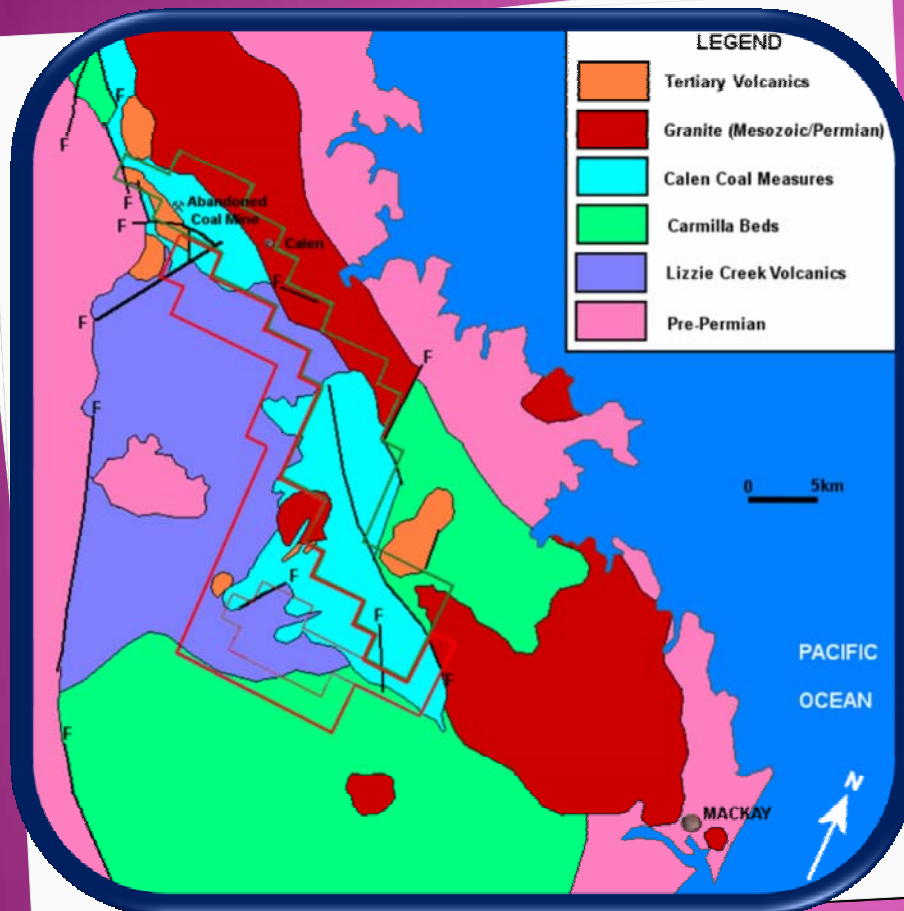
Primarily Freehold

B \$300K 5 years

Known Permian coal occurrences



EPC 1631 & 1820 GEOLOGICAL MAP



Sequence affected by folding and faulting

Seams up to 2.6 m thick mined previously

Low volatile thermal coal or PCI

Principal target moderate to small
underground resource

Given location resource of this type and
rank potentially economic

EPC 1672 LOCHABER

Location

290 km NW of Brisbane
47 Sub-blocks (146 km²)

Status

Application

Surface

Primarily Freehold

Work programme

\$300K 5 years

Geology and Exploration

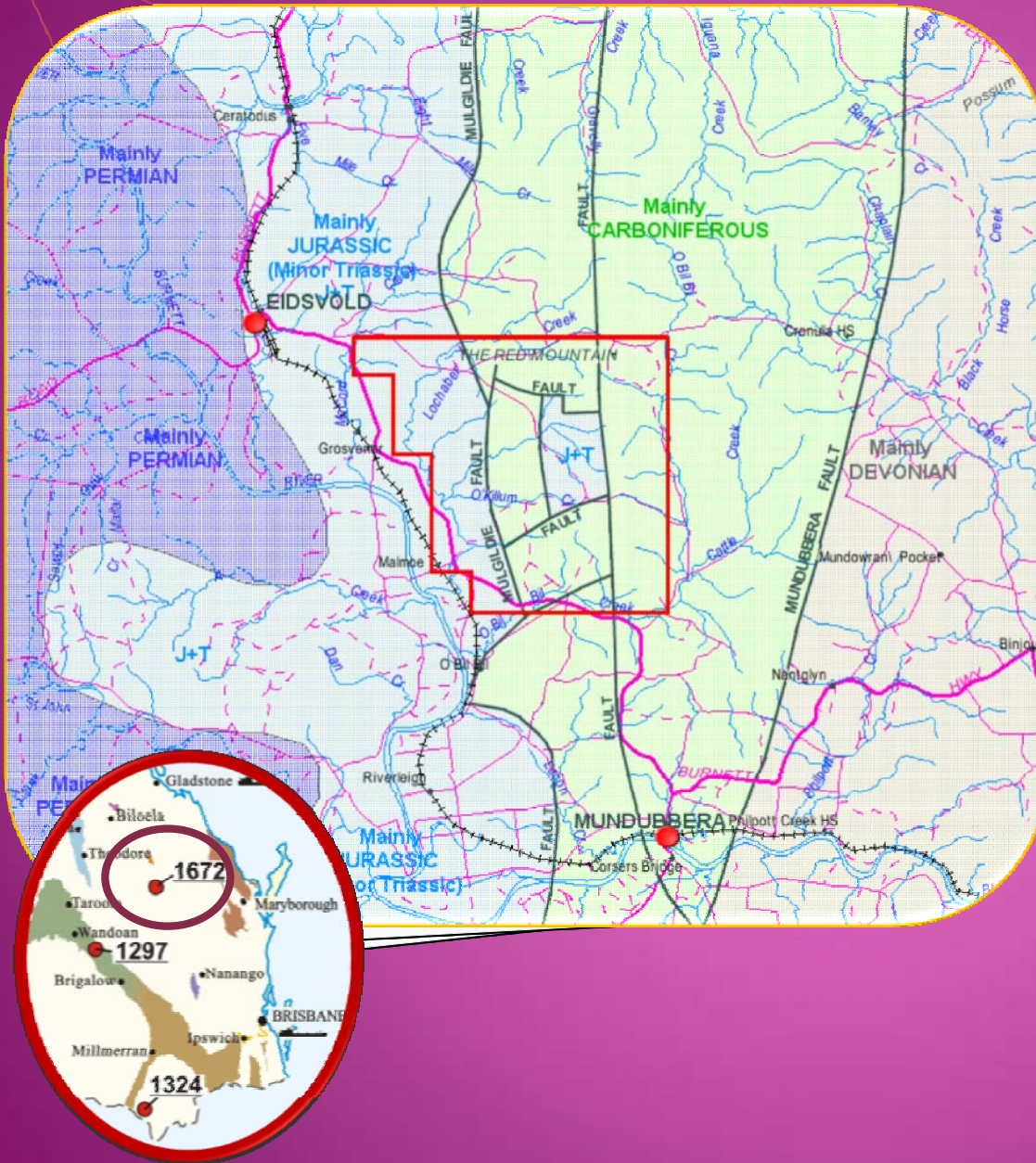
Mulgildie Basin

Walloon equivalent Monto CM

Exploration Target

Extension of known coal occurrences to the north

Follow-up on reported coal occurrences from 1930's



Topographic map of the Bathurst Range area. The map shows various creeks, rivers, and land parcels. A red outline highlights a specific area of interest. The map includes labels for 'COOK3108', 'COOK3109', 'COOK3110', 'COOK3130', 'COOK3181', 'COOK3182', 'COOK3252', 'COOK3253', 'COOK3254', 'COOK3324', 'COOK3325', 'COOK3326', 'COOK3397', and 'COOK3398'. A pink line labeled 'DEVELOPMENTAL' runs through the area. A red dot in the bottom left corner indicates the location of 'Bathurst Range'.

40 km SW of Cooktown
86 Sub-blocks (267 km²)

Application

Primarily Freehold

\$500K 5 years

Late Permian Normanby Formation
Very limited previous exploration

High rank thermal coal or PCI



[illegible]

100 km W of Cooktown
217 Sub-blocks (670 km²) (Large Area)

Application

Primarily Leasehold ?

\$915K 5 years

Late Permian Normanby Formation
Very limited previous exploration

High rank thermal coal or PCI

