



P.O. Box 80, Bundoora, Vic. 3083

Email: info@mountrommel.com

Web : www.mountrommel.com

3 September, 2018

MOUNT ROMMEL MINING LTD SECOND RELEASE FOR PUBLIC CONSIDERATION

For at least 50 years from 1851, the World held a fascination with the gold fields of Victoria. In the present year (2018) it is becoming evident (as at Fosterville, Victoria) that rich gold deposits remain to be revealed in these very same gold fields.

Prospects for new gold development have already been demonstrated at central Clunes, 125 years after mine closure. This Company seeks to encourage public awareness about the *additional* very special situation observed at North Clunes today.

An intense program of bore-hole geophysics is proposed (see NSX release, 20 August, 2018) to re-awaken public interest about existing evidence for gold at North Clunes.

Old and new facts combined reveal that the workings on the east side of the original mine at the old No.3 Level (400 feet below surface) ceased about 300 feet north of the central or winding shaft. Work then was diverted to the western lode. These events took place between October 1868 and January 1869 -- according to the routine reports published for the mine manager of that time (John Lewis). The diversion location is right under the south fence, at the bend in Downes Street - see plan included here.

The "original mine" refers here to the historic **New North Clunes** gold mine - once celebrated for its great richness in gold, so much so that it could afford to advance loan funds to the State of Victoria, the amount the equivalent of 10,000 oz. gold.

The Directors of the New North Clunes gold mine decided to advance money for the making of a water storage facility for the people of Clunes. This act of generosity was so unusual - unique - that we find the gold mine, its richness, and the constructed water storage the subject of a feature article in *The Illustrated Australian News*, for 17 June, 1873, pages 98 to 101.

The above reference begins on the bottom right-hand corner of page 98. Through Google -TROVE - and the National Library of Australia, anyone can read this comprehensive article and view the excellent sketches, turned into wood-cuts for printing -

<https://trove.nla.gov.au/newspaper/article/60447852>

Illustrations with this article capture the very distinctive mine buildings enclosing the head-frame and quartz treatment works. The 1873 sketch clearly positions the waste rock dump to the south of the working shaft. The unusual timber structure supporting the hoppers and housing for these works is still in service in the 1880s, as shown in a rare mine photo. This rare photo is included here - from the private collection of Peter Butters, Ballarat. The old photo is taken looking south-east, with the head-frame over the Pump Shaft to the left, and that over the Victoria shaft to the right of the picture.

Late in year 2003, the environs of this once-celebrated gold mine were rehabilitated at State expense. An aerial photograph shows up the extent of those rehabilitation works, including where that waste rock pile was flattened.

Prior to the rehabilitation, many drill holes had been completed through the northern part of the old Clunes goldfield. Today, readers can review some reports of those programs on the State GEDIS archives - see reference appended here. Mount Rommel Mining Ltd has had access to very considerable amounts of published and unpublished exploration records. The conclusion drawn is that **the eastern side portion of the original ore zone remains a live prospect for new gold development, north of Downes Street**. Key to that conclusion are the results of 3 holes more or less under Downes Street, at the bend into "no-name road". The locations of the holes of interest are shown on a drawing appended here. The drawing includes an outline of an old dam - easily seen on the 2003 air photo, or anytime using *Google Earth*.

Perhaps the principal hole is that numbered CP 130. This is a percussion hole drilled by the late-Western Mining Corporation in March 1986.

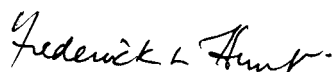
In November 2000 the writer received an unexpected consignment from the then-offices of late-WMC. This consignment included the recorded observations for most drill holes at Clunes completed by late-WMC, including records of down-hole surveys. Appended is two pages from those records, sufficient to confirm for everyone the significance of hole CP 130. A related observation is that the mineralised interval of hole CP 130 is consistent with the nature of the New North Clunes deposit so well-described in the public newspapers of that early time.

The State records include the substantial report about the MIM Exploration program at Clunes in 1996 (again, before site rehabilitation). One of two holes in that program of on-going interest is numbered MCR 12 -- where shown on the site plan attached to this NSX Release. Work to re-locate the collars of holes CP 130, NCD 3 and MCR 12 give confidence in the relationship of the holes, one to another. That confidence allows the suggestion that the gold-mineralised quartz zone of CP 130 dips east at about minus 65 degrees, to meet with the intersection of MCR 12.

Plotting the holes of interest - including MCR 8 - shows the absence of drilling for at least 100 metres, east side going north from Downes Street, south of the regional fault confirmed by hole CD 18-01.

The positions of the drill intersections of wide quartz zones, carrying 1 to 2 % sulphides, may well be revealed through the intended program of modern geophysics.

This could be no ordinary prospect, being so closely associated with the historic workings of the New North Clunes gold mine. Drilling by others in numerous campaigns has shown that an alternative exploration strategy is required. Mount Rommel Mining Ltd have put forward a sensible program aimed at delineating drilling targets, to advantage its Members, and revive public interest. The proposed program is first described in the Public Release of the Company, as published on NSX, on 21 August, 2018.



F.L. Hunt
Company Secretary

References -

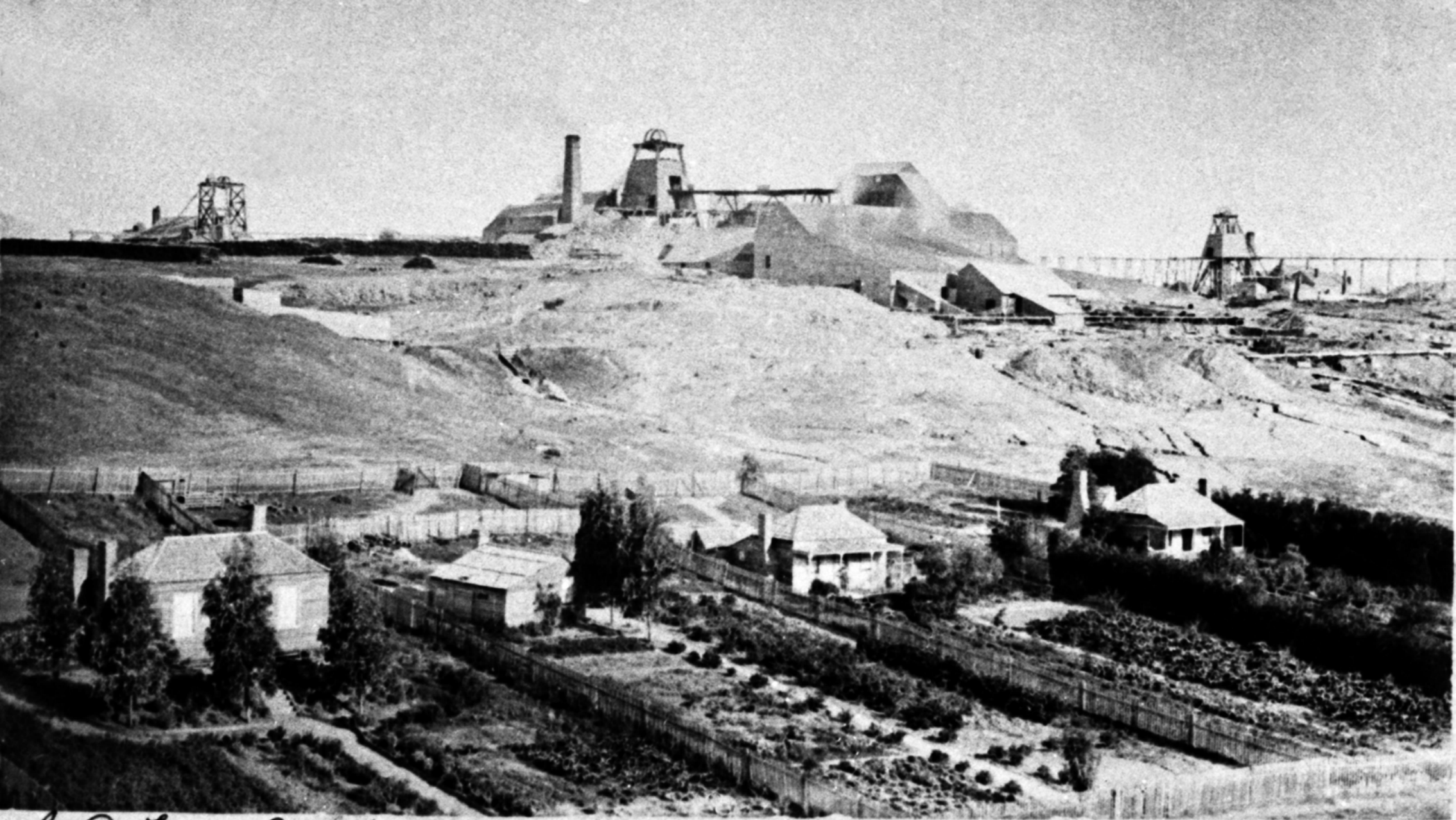
1. Sharpe, E.N., 1988, Report on Exploration in ML 903, Clunes, -- WMC unpublished report #K / 3119.
2. State of Victoria -- "Search Assist" -- archived exploration reports.

GEDIS REF-ID DB-610 ...17617 survey 2321, for EL 3262 Report, May 1993, Author G.I. Johnson.

This is the available record for 4 holes drilled 7 to 18 December, 1992, including hole NCD 3 (99m to 153m, EOH).

Hole NCD 3 lifted, passed above the target zone, finished at about the old mine number 3 Level.

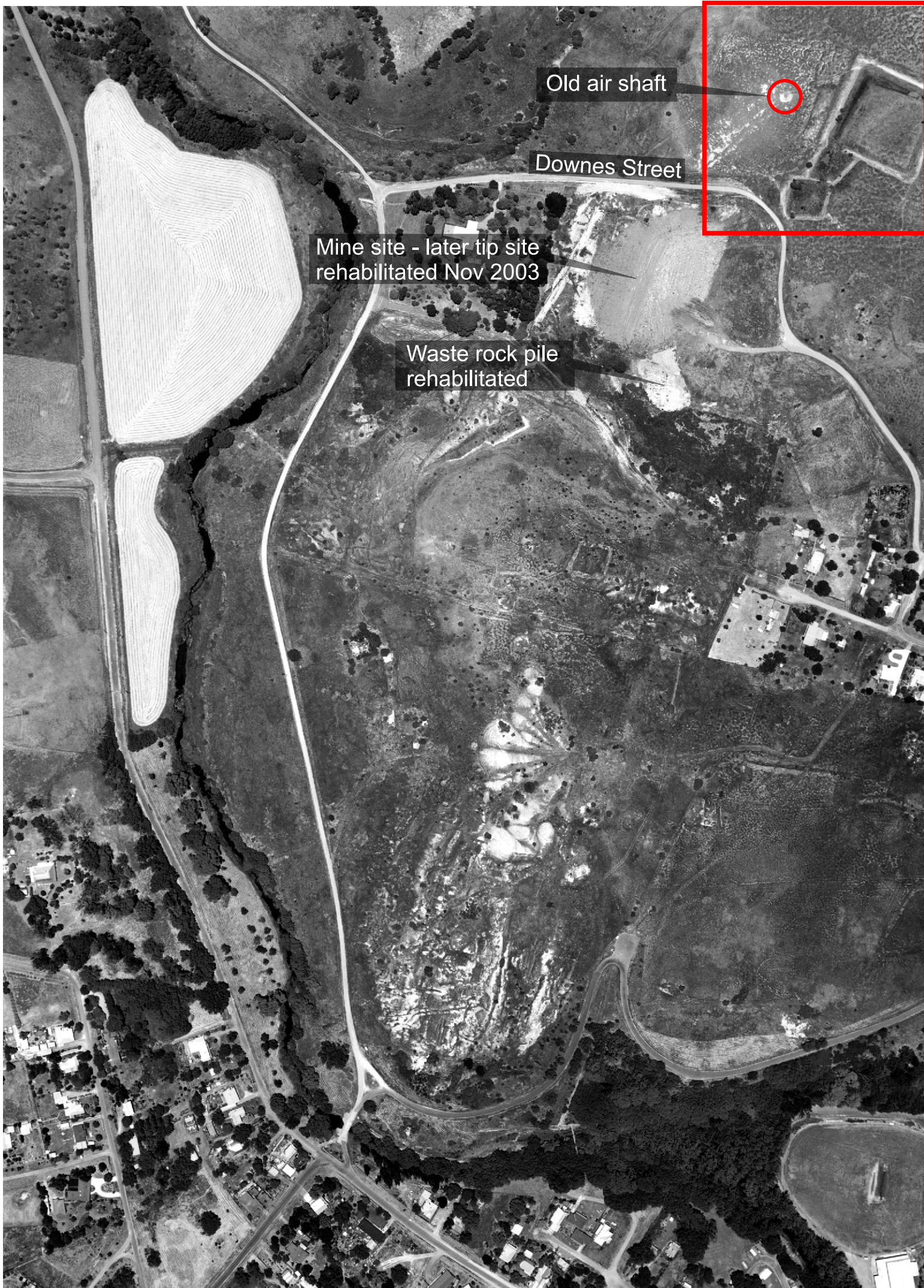
Quote from this record - *"not a convincing test"* ...of CP 130.



J. B. Tarnier photo

Clunes

New North Clunes Company's Works.

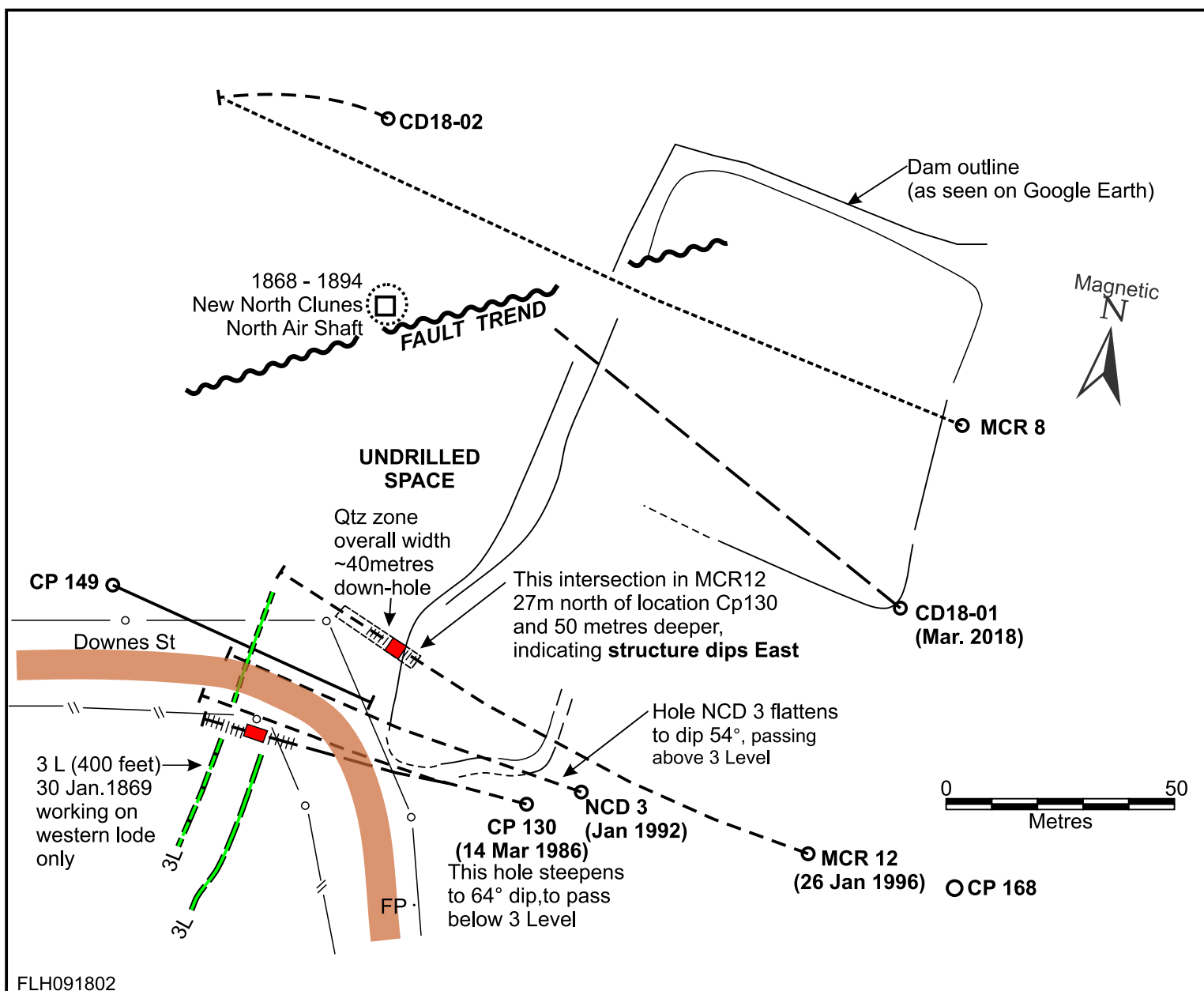


Old air shaft

Downes Street

Mine site - later tip site
rehabilitated Nov 2003

Waste rock pile
rehabilitated





SAMPLE DATA SHEET

SAMPLE NUMBER	DRILL HOLE DEPTH		PPM Au	PPM As	DESCRIPTION			ANALYTICAL DATA	
	FROM	OR TO			% Qtz	% Py	% As		(Values in ppm unless otherwise stated)
	SAMPLE CO-ORDINATE N/S	E/W						Remarks	
DA 31 88 21		120	121	0.03	100	60	T ₂	-	ONE of TWO PAGES -
2			2	0.02	100	40	T ₂	-	COPY
3			3	0.02	150	35	T ₂	-	Full 1/9/2018
4			4	0.02	100	45	T ₂	-	
5			5	0.02	150	50	T ₂	-	
6			6	0.02	100	30	T ₂	-	
7			7	0.02	100	25	T ₂	-	
8			8	0.02	100	10	T ₂	-	
9			9	0.02	100	10	T ₂	-	
30	129		130	0.02	150	10	T ₂	-	
1			1	0.02	100	15	T ₂	-	
2			2	0.02	150	65	T ₂	-	
3			3	0.02	200	30	T ₂	-	
4			4	0.02	200	20	T ₂	-	
5			5	0.02	150	25	T ₂	-	
6			6	0.02	100	40	T ₂	-	
7			7	0.06	300	65	T ₂	-	
8			8	2.32	550	60	T ₁	-	
9			9	0.36	150	15	T ₂	-	
40	139		140	1.16	450	80	T ₂	-	
1			1	10.70	1450	20	T ₂	-	
2			2	2.51	3800	30	T ₂	-	
3			3	1.08	2450	20	T ₂	-	
4			4	20.10	2850	35	T ₂	-	
5			5	1.29	1500	35	T ₂	-	
6			6	54.00	1000	45	T ₂	-	
7			7	8.00	1350	40	T ₂	-	
8			8	0.55	450	20	T ₂	-	
9			9	2.28	1800	10	T ₂	-	
DA 31 88 50	149		150	1.19	1450	25	T ₂	-	

ONE of TWO PAGES -

COPY

Full 1/9/2018

* Note - arsenopyrite not evident to logger
In hole MCR 12 (1996)
arsenopyrite + pyrite
visually evident from
197-207 m. down hole,
associated with increasing
% quartz. Full 1/9/2018

* 137-150 m :- 13 m @ 8.12 g/t
139-147 m :- 8 m @ 11.36 g/t

SAMPLING RECORD				PROJECT				DRILLING RECORD			
Material: R.C.		Depth: 164.0 m.		Sampled By: I.E.		Region: EASTERN		Drill Type: SCHRAMM 685		CC-ORDINATES	
Map Ref:		Laboratory Request No: ER000110		Date: 14.3.86		Project: CLUNES		R.L. in Water At Table in		m N/S	
LINE No.		FROM TO		Photo No. Bearing		Prospect: -		Dip: 60° Azm: 270°		HOLE No. CP 130	
						Cost Code: 4412		Date: 14.3.86			



SAMPLE DATA SHEET

SAMPLE NUMBER	DRILL HOLE DEPTH			DESCRIPTION							ANALYTICAL DATA	
	FROM	OR	TO	SAMPLE CO-ORDINATE							(Values in ppm unless otherwise stated)	
	N/S		E/W	PPM Au	PPM Ag	% QTZ	% Py	% As	Colour	Lithology	REMARKS	
DA 31885	1		150	151	0.70	1050	50	T _r	-	1	T _b Sag	2/2 COPY 1/9/2018 Slightly Carbon (10%)
	2			2	0.49	1000	20	T _r	-	1	"	
	3			3	0.47	800	10	T _r	-	1	"	
	4			4	3.99	1000	25	T _r	-	1	"	
	5			5	0.57	550	30	T _r	-	1	"	
	6			6	0.27	250	10	T _r	-	1	"	
	7			7	0.06	200	35	T _r	-	1	"	
	8			8	0.20	400	60	T _r	-	1	"	
	9			9	0.50	950	10	T _r	-	1	"	
	60		159	160	1.49	1250	5	T _r	-	1	"	
	1			1	0.28	550	25	T _r	-	1	"	20% Carbon
	2			2	0.26	450	15	T _r	-	1	"	
	3			3	0.24	350	25	T _r	-	1	"	
DA 31886	4			4	0.23	550	10	T _r	-	1	"	E.O.H. @ 164 m

SAMPLING RECORD				PROJECT		DRILLING RECORD	
Material:	Depth:	Sampled By:	Region:	Drill Type:	COORDINATES		
Map Ref:	Laboratory Request No.:	Date:	Project:	R.L. m Water At Table m	m N/S		
LINE No.	FROM TO	Photo No Bearing	Prospect:	Dip Azim	m E/W		
			Cost Code:	Date:	HOLE No CP 130		