



METHVEN

Special Shareholder Meeting

For a scheme of arrangement between Methven Limited and its shareholders in relation to the proposed acquisition of all of the fully paid ordinary shares of Methven Limited by GWAIL (NZ) Limited, an indirectly wholly-owned subsidiary of GWA Group Limited.

Tuesday 12 March 2019

Emergency information

EMERGENCY INFORMATION

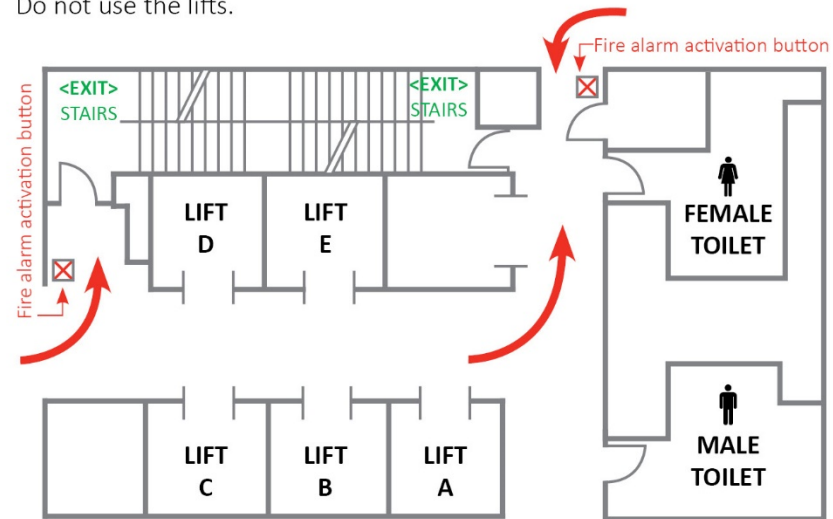


WHEN YOU HEAR A FIRE ALARM

Listen to any instructions given by the Event Manager.

You must leave the building immediately via the two stairwells marked with "Exit" signs.

If you need assistance leaving the building please remain in the stairwell. Do not use the lifts.



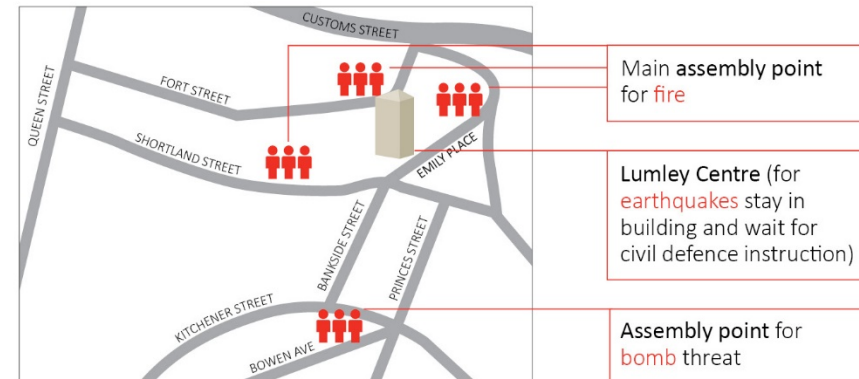
AUTOMATIC EXTERNAL DEFIBRILLATOR (AED)

An AED unit is permanently stored in the room behind our reception area on level 27.



ASSEMBLY AREAS

Main area is outside the Vero building. Do not cross Shortland Street.



EARTHQUAKE

Move no more than a few steps then Drop, Cover and Hold.

Brace yourself in a doorway or crouch behind a solid structure (eg wall).

Keep away from windows and equipment that may fall.

Remain indoors until the shaking has stopped.



FIRST AID KITS

Level 27: kit is located in the room behind our reception area.

Level 28: kit is located on top shelf above dishwasher in kitchen.

Introductions

ALISON BARRASS

Chair



DAVID BANFIELD

Executive Director



RICHARD CUTFIELD

Independent Director



SHELLEY CAVE

Independent Director
*Chair, Audit Compliance & Risk
Management Committee*



STEVE TUCKER

Independent Director
*Chair, Remuneration
Committee
Chair, Health & Safety
Committee*



TONY BALFOUR

Independent Director



Voting summary

	No. of valid Proxy/Postal votes cast	% of Proxy/Postal votes cast	% of Total votes able to be cast
Total shares on issue	73,482,816	-	-
Total number of Proxy and Postal votes cast	54,547,811	100.00%	74.23%

All percentages have been rounded to 2 decimal places for the purposes of presentation

Questions?

Resolution

ALISON BARRASS

Resolution

Special Resolution:

1. That the Scheme (the terms of which are described in the Scheme Booklet) be approved.

The Scheme Booklet was sent to Shareholders dated 8 February 2019.

Voting – Resolution

Please vote by ticking one box, either “FOR”, “AGAINST” OR “ABSTAIN”.

Link Market Services will come and collect your Voting Papers.

Please raise your hand if you require a Voting Paper or a pen.

Results will be announced to NZX as soon as they are available.

	<i>Tick (✓) in box to vote</i>		
Special Resolution	For	Against	Abstain
1. That the Scheme (the terms of which are described in the Scheme Booklet) be approved..	<input type="checkbox"/>	<input type="checkbox"/>	<input type="checkbox"/>

Proxy and Postal voting summary

	No. of valid Proxy/Postal votes cast	% of Proxy/Postal votes cast	% of Total votes able to be cast
Total shares on issue	73,482,816	-	-
Total number of Proxy and Postal votes cast	54,547,811	100.00%	74.23%
For	52,390,126	96.04%	71.30%
Discretionary held by Chair	878,671	1.61%	1.20%
Discretionary held by others	269,788	0.49%	0.36%
Against	1,009,226	1.85%	1.37%

All percentages have been rounded to 2 decimal places for the purposes of presentation

Thank you.

Thank you

- The Board would like to recognise and thank every Methven employee for their considerable efforts. Through their skills, knowledge, innovation and expertise, they have helped build the company into a market-leading designer and manufacturer recognised as world-class in many markets around the world.



METHVEN

Special Shareholder Meeting

For a scheme of arrangement between Methven Limited and its shareholders in relation to the proposed acquisition of all of the fully paid ordinary shares of Methven Limited by GWAIL (NZ) Limited, an indirectly wholly-owned subsidiary of GWA Group Limited.

Tuesday 12 March 2019