

Release

Stock exchange listings: NZX (MEL) ASX (MEZ)

Meridian Energy monthly operating report for April 2021

18 May 2021

Attached is Meridian Energy Limited's monthly operating report for the month of April 2021.

Highlights this month include:

- In the month to 14 May 2021, national hydro storage increased from 59% to **67%** of historical average
- South Island storage increased to **71%** of average and North Island storage decreased to **35%** of average by 14 May 2021
- Meridian's April 2021 monthly total inflows were **87%** of historical average
- Meridian's Waitaki catchment water storage at the end of April 2021 was **54%** of historical average
- Water storage in Meridian's Waiau catchment was **below** average at the end of April 2021
- National electricity demand in April 2021 was **15.4%** higher than the same month last year
- April 2021 was warmer and drier than normal for much of the country. Soil moisture levels are in severe deficit in eastern parts of both islands
- Meridian made calls under the Genesis swaption in April and May 2021
- Outages have been confirmed out to December 2021 on the Roxburgh-Livingstone line as part of the Clutha Upper Waitaki Lines Project
- New Zealand Aluminium Smelter's average load during April 2021 was **567MW**
- Meridian's New Zealand retail sales volumes in April 2021 were **36.9%** higher than April 2020, when the country was in Alert Level 4 lockdown
- Compared to April 2020, segment sales increased in: SMB +91.7%, agricultural +63.5%, large business +12.8% and corporate +39.9%. Sales were 2.3% lower in residential

ENDS

Neal Barclay

Chief Executive

Meridian Energy Limited

For investor relations queries, please contact:

Owen Hackston

Investor Relations Manager

021 246 4772

For media queries, please contact:

Polly Atkins

Senior Communications Specialist

021 174 1715



Meridian.

Monthly Operating Report

April 2021

April highlights

In the month to 14 May 2021, national hydro storage increased from **59%** to **67%** of historical average

South Island storage increased to **71%** of average and North Island storage decreased to **35%** of average by 14 May 2021

Meridian's April 2021 monthly total inflows were **87%** of historical average

Meridian's Waitaki catchment water storage at the end of April 2021 was **54%** of historical average

Water storage in Meridian's Waiau catchment was **below** average at the end of April 2021

National electricity demand in April 2021 was **15.4%** higher than the same month last year

April 2021 was warmer and drier than normal for much of the country. Soil moisture levels are in severe deficit in eastern parts of both islands

Meridian made calls under the Genesis swaption in April and May 2021

Outages have been confirmed out to December 2021 on the Roxburgh-Livingstone line as part of the Clutha Upper Waitaki Lines Project

New Zealand Aluminium Smelter's average load during April 2021 was **567MW**

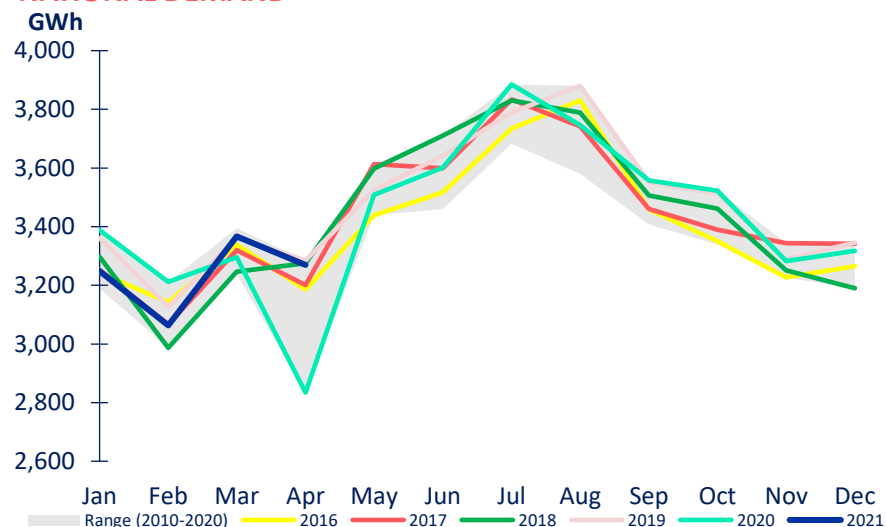
Meridian's New Zealand retail sales volumes in April 2021 were **36.9%** higher than April 2020, when the country was in Alert Level 4 lockdown

Compared to April 2020, segment sales increased in: SMB +91.7%, agricultural +63.5%, large business +12.8% and corporate +39.9%. Sales were 2.3% lower in residential

Market data

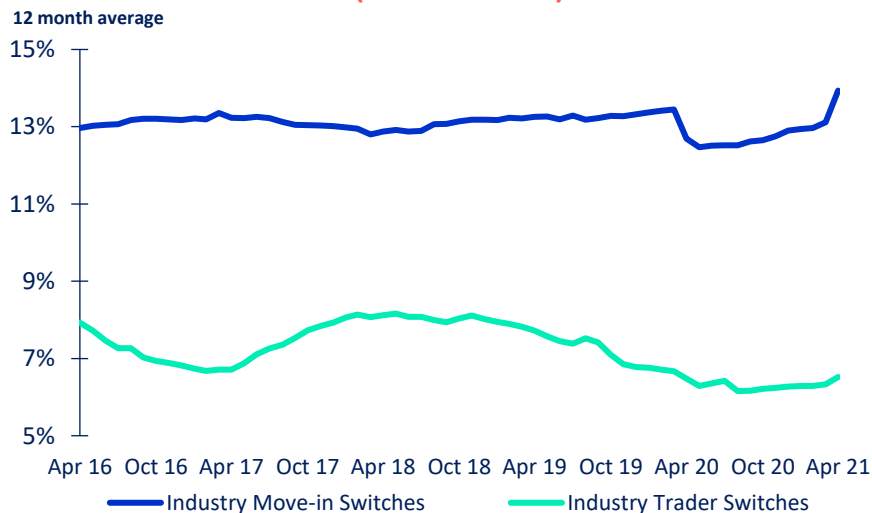
- National electricity demand in April 2021 was 15.4% higher than the same month last year
- April 2021 was warmer and drier than normal for much of the country. Soil moisture levels are in severe deficit in eastern parts of both islands
- Demand in the last 12 months was 0.2% higher than the preceding 12 months
- New Zealand Aluminium Smelter's average load during April 2021 was 567MW
- 12-month average switching rate of customers changing retailers but not moving ("trader" switch) was 6.5% at the end of April 2021
- 12-month average switching rate of customers moving and changing retailers ("move-in" switch) was 13.9% at the end of April 2021

NATIONAL DEMAND



Source: Electricity Authority (reconciled demand)

MARKET ICP SWITCHING (ALL RETAILERS)

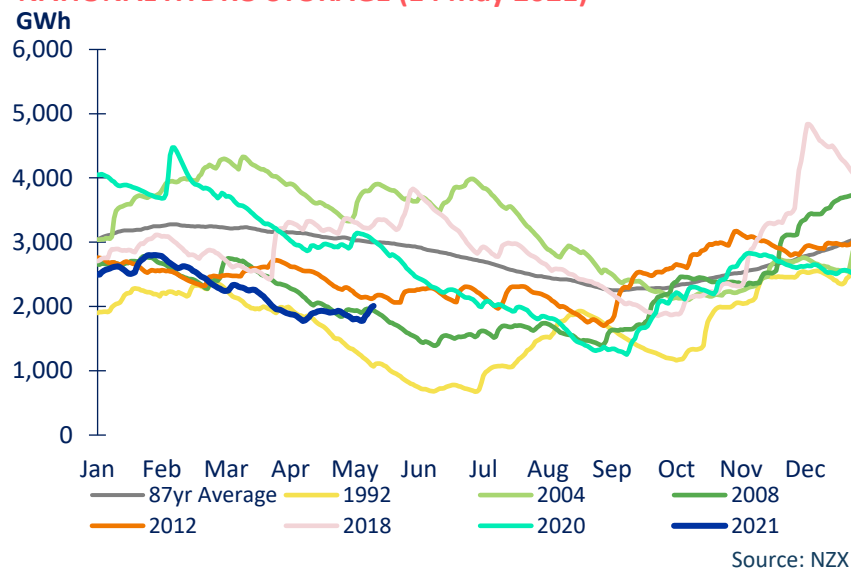


Source: Electricity Authority

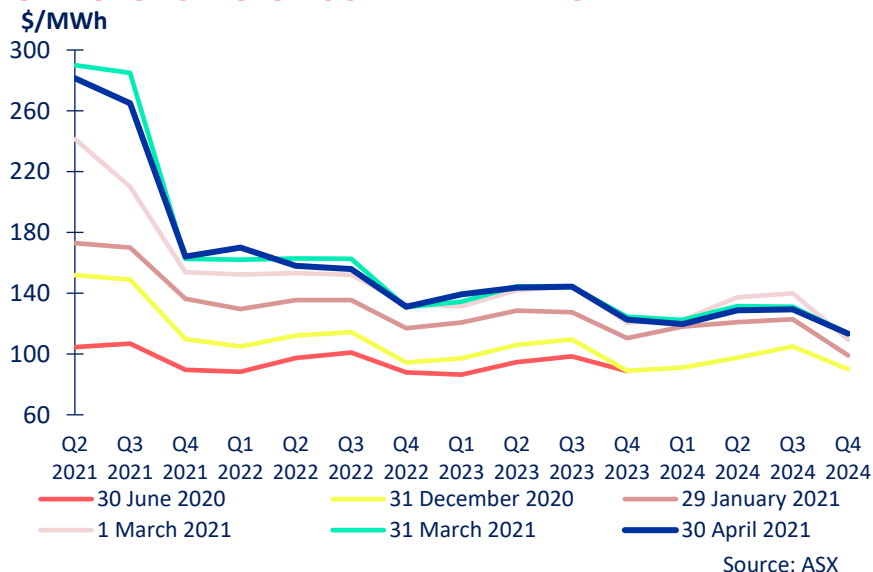
Market data

- April 2021 saw little change in ASX prices
- National storage increased from 59% of average on 13 April 2021 to 67% of average on 14 May 2021
- South Island storage increased to 71% of historical average by 14 May 2021. North Island storage decreased to 35% of average

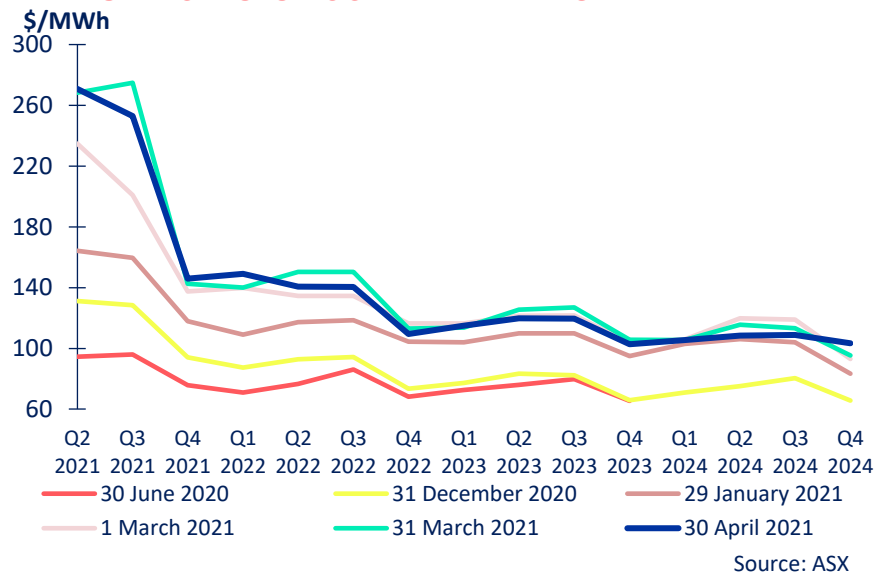
NATIONAL HYDRO STORAGE (14 May 2021)



OTAHUHU ASX FUTURES SETTLEMENT PRICE



BENMORE ASX FUTURES SETTLEMENT PRICE

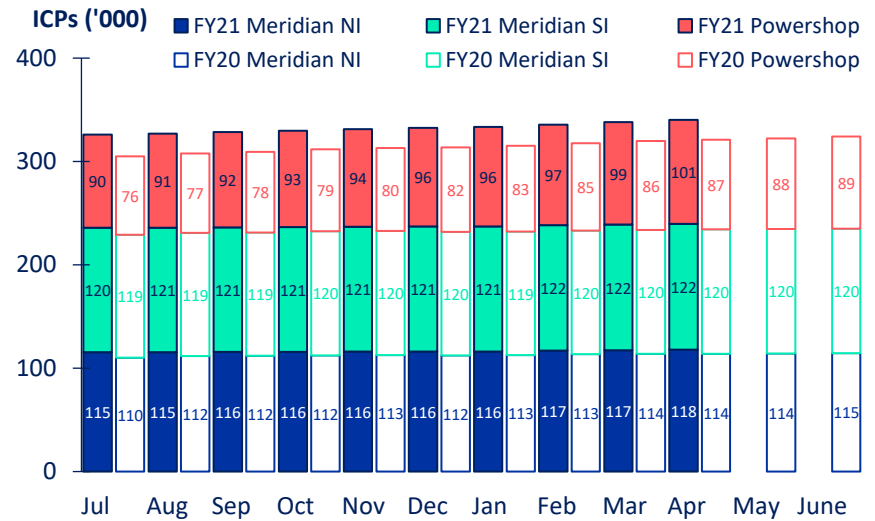


New Zealand retail

- Meridian's New Zealand customer connection numbers rose 0.6% during April 2021 and have risen 4.9% since June 2020
- Retail sales volumes in April 2021 were 36.9% higher than April 2020, when the country was in Alert Level 4 lockdown
- Compared to April 2020, segment sales increased in: SMB +91.7%, agricultural +63.5%, large business +12.8% and corporate +39.9%. Sales were 2.3% lower in residential
- To date this financial year, retail sales volumes are 13.1% higher than the same period last year
- This reflects increased sales in all segments: residential +3.8%, small medium business +19.6%, agricultural +9.5%, large business +14.3% and corporate +17.0%

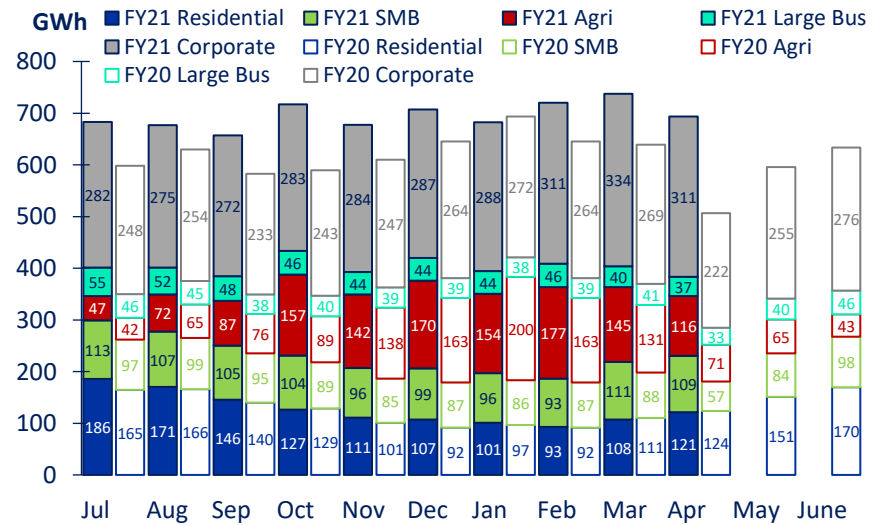
*excludes volumes sold to New Zealand Aluminium Smelters and CFDs

MERIDIAN'S NZ CUSTOMER CONNECTIONS



Source: Meridian

MERIDIAN'S RETAIL SALES VOLUME*

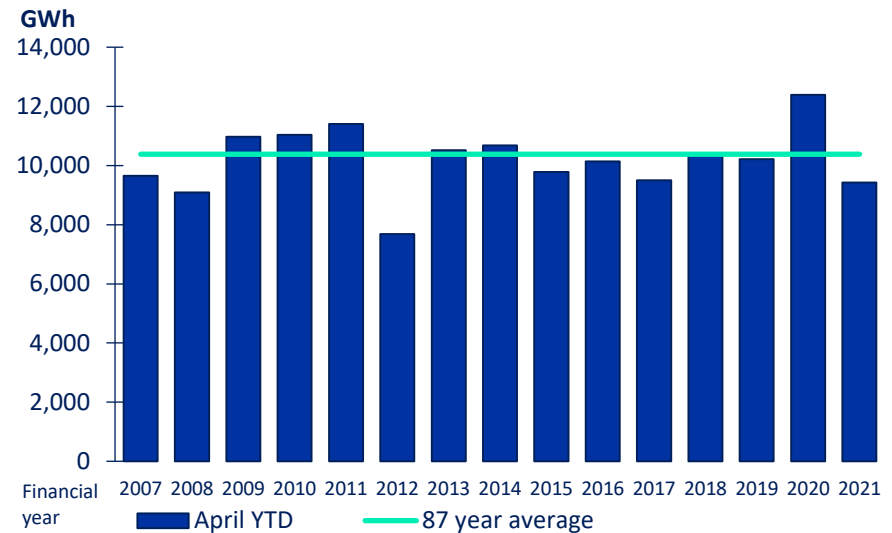


Source: Meridian

New Zealand storage

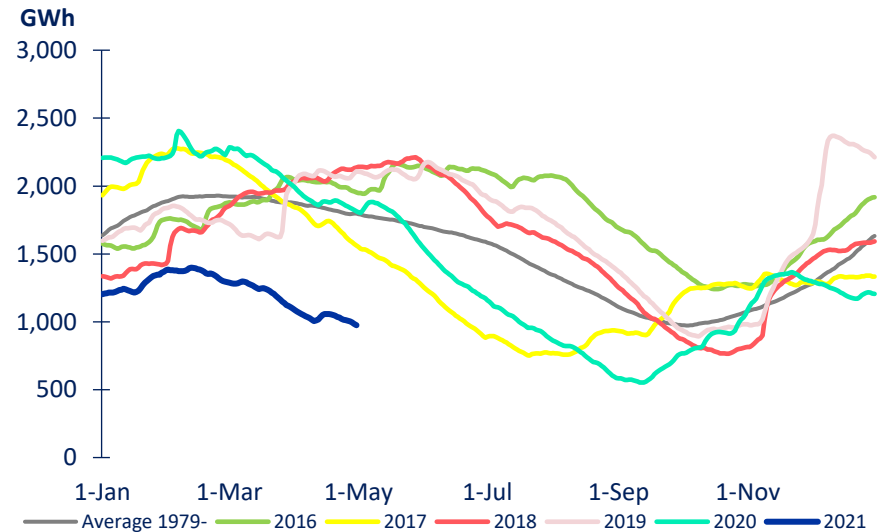
- April 2021 monthly inflows were 87% of historical average
- To date this financial year, inflows are 91% of historical average
- Meridian's Waitaki catchment water storage moved from 1,098GWh to 974GWh during April 2021
- Waitaki water storage at the end of April 2021 was 54% of historical average and 86% lower than the same time last year
- Water storage in Meridian's Waiau catchment was below average at the end of April 2021

MERIDIAN'S COMBINED CATCHMENT INFLOWS



Source: Meridian

MERIDIAN'S WAITAKI STORAGE

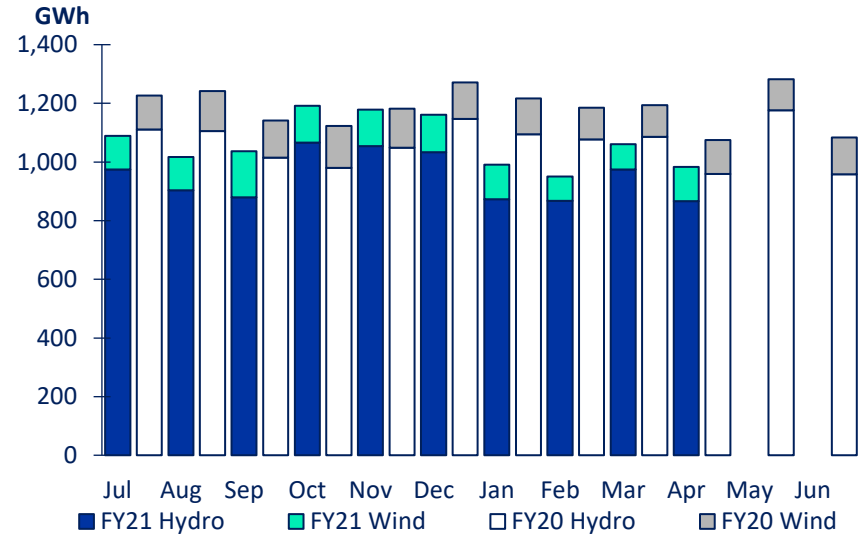


Source: Meridian

New Zealand generation

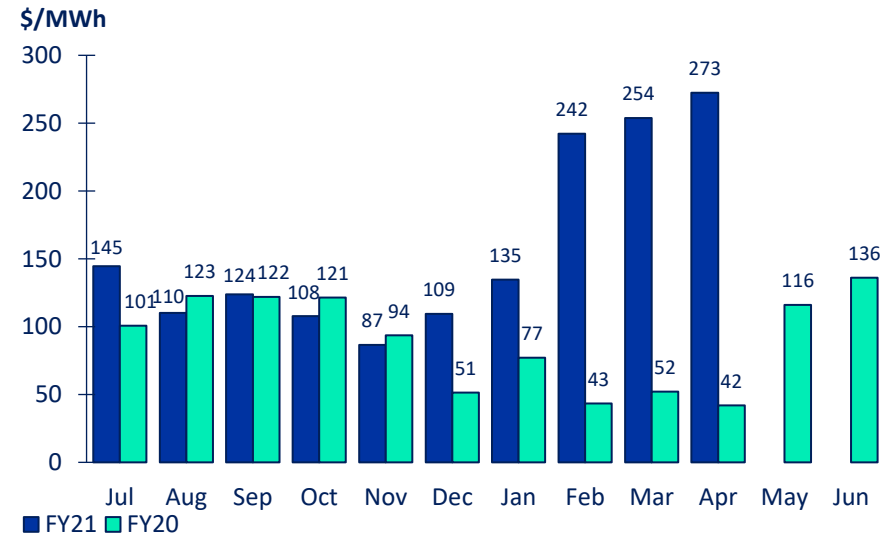
- Meridian's New Zealand generation in April 2021 was 8.5% lower than the same month last year, reflecting lower hydro and higher wind generation
- To date this financial year, Meridian's New Zealand generation is 10.1% lower than the same period last year, reflecting lower hydro and lower wind generation
- The average price Meridian received for its generation in April 2021 was 550.6% higher than the same month last year
- The average price Meridian paid to supply customers in April 2021 was 483.5% higher than the same month last year
- To date this financial year, the average price Meridian received for its generation is 87.9% higher than the same period last year and the average price paid to supply customers is 88.8% higher

MERIDIAN'S NEW ZEALAND GENERATION



Source: Meridian

MERIDIAN'S AVERAGE GENERATION PRICE*



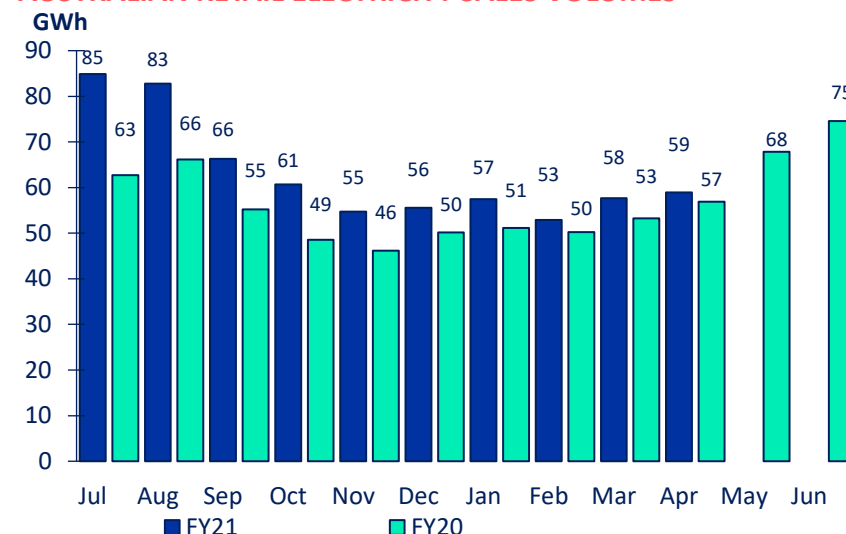
*price received for Meridian's physical generation

Source: Meridian

Australian retail

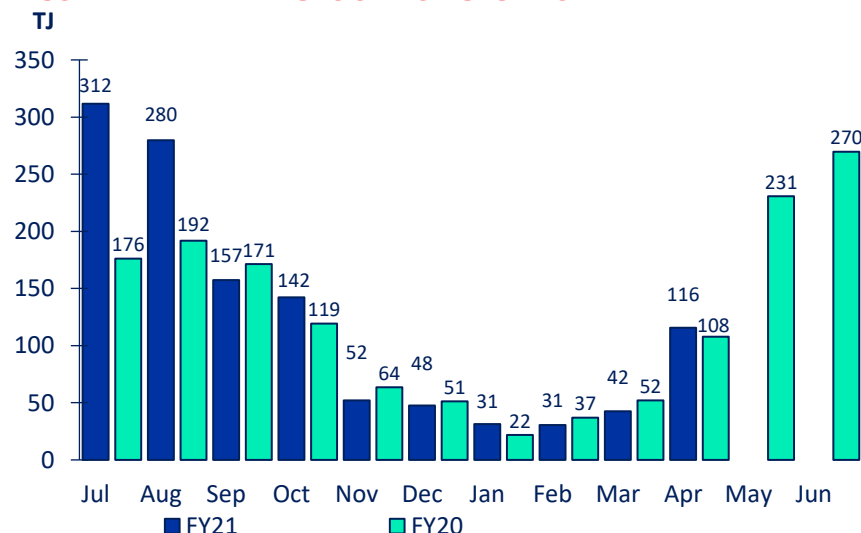
- Powershop Australia electricity customer connection numbers rose 0.1% during April 2021 and have risen 4.3% since June 2020
- Electricity sales volumes in April 2021 were 3.6% higher than the same month last year
- To date this financial year, electricity sales volumes are 16.9% higher than the same period last year
- Powershop Australia gas customer connection numbers rose 0.9% during April 2021 and have risen 13.8% since June 2020
- Gas sales volumes in April 2021 were 7.4% higher than the same month last year
- To date this financial year, gas sales volumes are 22.1% higher than the same period last year

AUSTRALIAN RETAIL ELECTRICITY SALES VOLUMES



Source: Meridian

AUSTRALIAN RETAIL GAS SALES VOLUMES



Source: Meridian

Australian generation

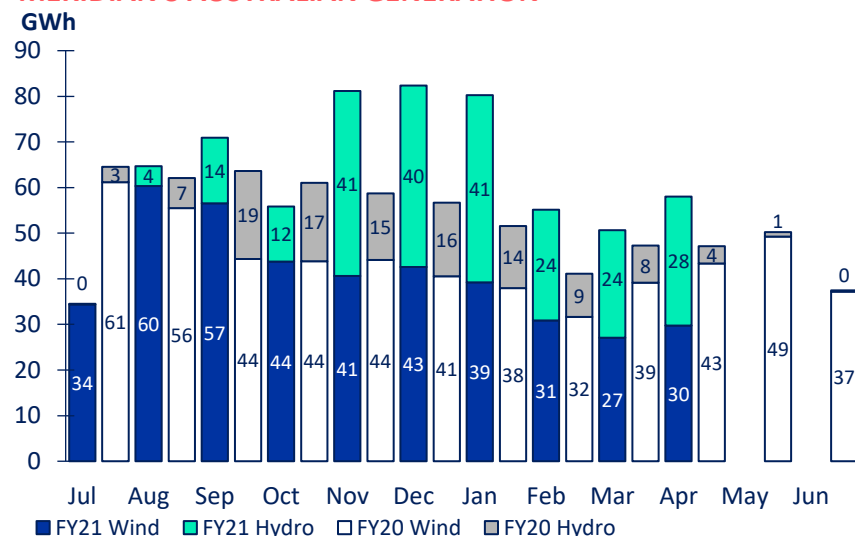
- Meridian's Australian generation in April 2021 was 23.1% higher than the same month last year, reflecting lower wind generation and higher hydro generation
- To date this financial year, Meridian's Australian generation is 14.4% higher than the same period last year, reflecting lower wind and higher hydro generation
- Storage at Meridian's Hume hydro power station decreased to 43% of capacity by mid May 2021
- NEM¹ electricity demand in April 2021 was 1.0% higher than the same month last year
- Spot prices lifted in April 2021 to be 45% higher than the same month last year. Forward prices increased marginally in April 2021

¹See glossary on page 17 for a definition of Australia's National Electricity Market

²February average generation prices include the settlement of forward sold Large Generation Certificates:

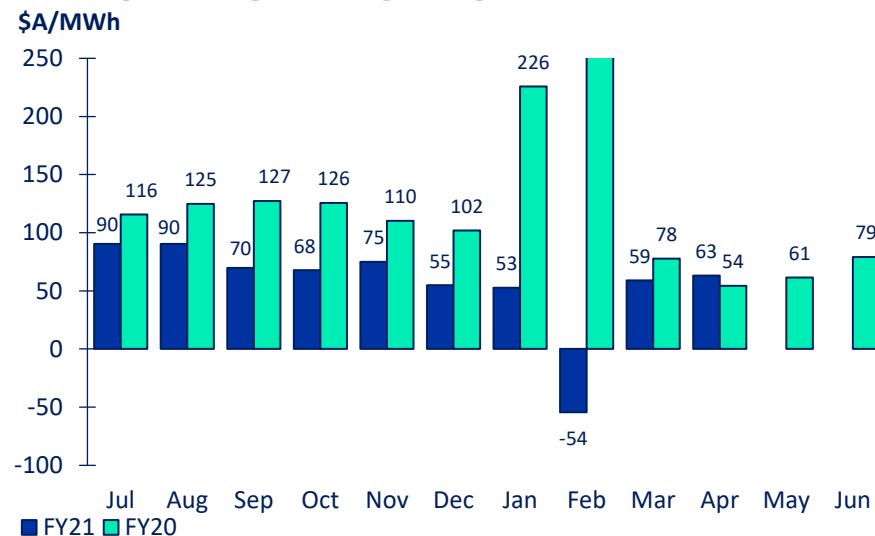
- Forward LGC sales are marked to market monthly through fair value movements
- Sales settle in February each year
- At which point fair value gains or losses on settled sales transfer to generation revenue
- With the FY21 settlement, generation revenue now includes market to market losses of A\$3M
- This compares with settlement gains of A\$12M in FY20

MERIDIAN'S AUSTRALIAN GENERATION



Source: Meridian

AVERAGE WIND GENERATION PRICE²



Source: Meridian

New Zealand

	APRIL 2021 MONTH	APRIL 2020 MONTH	MARCH 2021 MONTH	FEBRUARY 2021 MONTH	10 MONTHS TO APRIL 2021	10 MONTHS TO APRIL 2020
New Zealand contracted sales						
Residential sales volume (GWh)	121	124	108	93	1,271	1,225
Small medium business sales volume (GWh)	109	57	111	93	1,034	864
Agricultural sales volume (GWh)	116	71	145	177	1,266	1,157
Large business sales volume (GWh)	37	33	40	46	455	398
Corporate and industrial sales volume (GWh)	311	222	334	311	2,928	2,502
Retail contracted sales volume (GWh)	694	507	738	721	6,954	6,147
Average retail contracted sales price (\$NZ/MWh)	\$114.7	\$109.2	\$107.5	\$108.7	\$110.5	\$107.0
NZAS sales volume (GWh)	412	416	426	384	4,173	4,521
Financial contract sales volumes (GWh)	167	222	197	126	1,634	1,930
Average wholesale & financial contracts sales price (\$NZ/MWh)	\$76.8	\$64.8	\$69.8	\$58.0	\$70.0	\$67.1
Retail customer supply volumes (GWh)	718	537	768	757	7,292	6,446
Cost to supply retail customers (\$NZ/MWh)	\$285.5	\$50.1	\$265.1	\$256.7	\$173.2	\$95.6
Cost to supply wholesale customers (\$NZ/MWh)	\$277.8	\$43.4	\$260.3	\$244.8	\$156.4	\$80.4
Cost of financial contracts (\$NZ/MWh)	\$266.4	\$52.1	\$204.8	\$234.0	\$154.3	\$77.7
Total New Zealand customer connections	340,178	321,051	338,051	335,580		

New Zealand

	APRIL 2021 MONTH	APRIL 2020 MONTH	MARCH 2021 MONTH	FEBRUARY 2021 MONTH	10 MONTHS TO APRIL 2021	10 MONTHS TO APRIL 2020
New Zealand generation						
Hydro generation volume (GWh)	867	959	974	868	9,494	10,624
Wind generation volume (GWh)	116	116	87	83	1,168	1,233
Total generation volume (GWh)	983	1,075	1,061	951	10,662	11,857
Average generation price (\$NZ/MWh)	\$272.5	\$41.9	\$253.8	\$242.1	\$155.3	\$82.7
New Zealand hedging						
Hedging volume (GWh)	348	239	431	345	3,151	2,195
Hedging cost average price (\$NZ/MWh)	\$110.3	\$77.4	\$127.0	\$115.6	\$106.2	\$83.9
Hedging spot revenue average price (\$NZ/MWh)	\$260.2	\$51.5	\$219.0	\$235.0	\$163.2	\$85.4
Future contract close outs (\$NZm)	-\$1.6	-\$2.0	-\$3.6	-\$4.5	-\$21.4	-\$7.3

Australia

	APRIL 2021 MONTH	APRIL 2020 MONTH	MARCH 2021 MONTH	FEBRUARY 2021 MONTH	10 MONTHS TO APRIL 2021	10 MONTHS TO APRIL 2020
Australian contracted sales						
Retail contracted electricity sales volume (GWh)	59	57	58	53	632	541
Average electricity contracted sales price ¹ (\$A/MWh)	\$127.2	\$121.1	\$124.1	\$129.7	\$136.3	\$146.7
Retail contracted gas sales volume (TJ)	116	108	42	31	1,211	991
Average gas contracted sales price ¹ (\$A/GJ)	\$13.0	\$12.5	\$24.2	\$28.0	\$15.3	\$15.3
Financial contract sales volumes ² (GWh)	17	7	42	38	349	496
Financial contracted sales average price (\$A/MWh)	\$49.8	\$176.6	\$86.4	\$86.4	\$72.7	\$94.8
Cost to supply electricity customers (\$A/MWh)	\$76.7	\$56.8	\$56.8	\$48.0	\$65.1	\$111.8
Cost to supply gas customers (\$A/GJ)	\$10.7	\$13.4	\$17.8	\$17.7	\$12.7	\$12.3
Cost of financial contracts (\$A/MWh)	\$52.8	\$87.4	\$39.1	\$30.2	\$45.2	\$83.6
Powershop electricity customer connections ⁷	142,086	135,205	141,998	141,643		
Powershop gas customer connections ⁸	43,092	36,077	42,728	41,884		

Australia

	APRIL 2021 MONTH	APRIL 2020 MONTH	MARCH 2021 MONTH	FEBRUARY 2021 MONTH	10 MONTHS TO APRIL 2021	10 MONTHS TO APRIL 2020
Australian generation						
Wind generation volumes (GWh)	30	43	27	31	405	442
Average wind generation price ⁵ (\$A/MWh)	\$63.2	\$54.2	\$58.9	-\$54.4	\$61.0	\$142.9
Hydro generation volumes (GWh)	28	4	24	24	230	112
Average hydro generation price ⁵ (\$A/MWh)	\$68.2	\$39.1	\$43.7	\$33.3	\$57.3	\$86.7
PPA generation received (GWh)	25	30	25	24	283	306
Average PPA generation price [net of costs] (\$A/MWh)	\$0.6	-\$14.5	-\$13.4	-\$18.2	-\$8.0	\$20.0
Australian hedging						
Hedging volume ⁶ (GWh)	23	36	13	15	223	419
Hedging costs (\$A/MWh)	\$180.3	\$79.3	\$266.6	\$266.8	\$141.8	\$105.3
Hedging spot revenue average price (\$A/MWh)	\$186.2	\$41.7	\$50.4	\$82.2	\$72.3	\$82.1
Future contract close outs (\$A M)	\$0.0	\$0.8	\$0.0	-\$0.7	-\$1.3	\$2.0

Meridian group

	APRIL 2021 MONTH	APRIL 2020 MONTH	MARCH 2021 MONTH	FEBRUARY 2021 MONTH	10 MONTHS TO APRIL 2021	10 MONTHS TO APRIL 2020
Meridian Group						
Employee and Operating Costs ⁹ (\$m)	22	20	22	21	210	208
Stay in Business Capital Expenditure (\$m)	4	3	4	3	35	36
Investment Capital Expenditure (\$m)	4	1	34	3	64	14
Total Capital Expenditure (\$m)	8	4	38	6	99	50

Footnotes

- Contracted sales volumes and volume weighted average price received from contracted customers less distribution costs
- Derivatives sold excluding the sell-side of virtual asset swaps
- Average price of both NZAS sales volume and derivative sales volumes
- Meridian Retail and Powershop New Zealand installation control points (ICPs), excluding vacants
- Volume weighted average price received for Meridian's physical generation
- Over the counter and ASX contract volumes excluding the buy-side of virtual asset swaps
- Financially responsible market participants, excluding vacants
- Meter installation registration numbers
- Excludes electricity metering expenses, now reclassified into gross margin

FY21 operating information

	Jul 2020	Aug 2020	Sep 2020	Oct 2020	Nov 2020	Dec 2020	Jan 2021	Feb 2021	Mar 2021	Apr 2021	May 2021	Jun 2021	Q1 FY21	YoY change	Q2 FY21	YoY change	Q3 FY21	YoY change	Q4 FY21	YoY change
New Zealand contracted sales																				
Residential sales volume (GWh)	186	171	146	127	111	107	101	93	108	121			503	+31	345	+16	302	+2		
Small medium business sales volume (GWh)	113	107	105	104	96	99	96	93	111	109			325	+34	299	+44	300	+39		
Agricultural sales volume (GWh)	47	72	87	157	142	170	154	177	145	116			205	+22	469	+60	476	-18		
Large business sales volume (GWh)	55	52	48	46	44	44	44	46	40	37			155	+26	134	+14	130	+12		
Corporate and industrial sales volume (GWh)	282	275	272	283	284	287	288	311	334	311			829	+93	855	+117	933	+127		
Retail contracted sales volume (GWh)	683	677	657	717	678	707	683	721	738	694			2,017	+206	2,102	+252	2,141	+163		
Average retail contracted sales price (\$NZ/MWh)	\$120.4	\$119.3	\$118.1	\$106.0	\$103.1	\$104.2	\$104.1	\$108.7	\$107.5	\$114.7			\$119.3	+\$6.3	\$104.5	+\$3.6	\$106.8	-\$0.1		
NZAS sales volume (GWh)	426	426	411	426	412	426	426	384	426	412			1,262	-110	1,263	-110	1,236	-123		
Financial contract sales volumes (GWh)	188	125	201	126	221	140	144	126	197	167			514	+40	487	+59	467	-339		
Average wholesale & financial contracts sales price (\$NZ/MWh)	\$82.0	\$70.4	\$74.2	\$69.4	\$69.9	\$66.8	\$59.6	\$58.0	\$69.8	\$76.8			\$75.7	+\$6.0	\$68.7	+\$3.9	\$62.9	-\$4.4		
Retail customer supply volumes (GWh)	704	717	696	755	717	743	719	757	768	718			2,117	+229	2,215	+274	2,244	+163		
Cost to supply retail customers (\$NZ/MWh)	\$165.1	\$120.6	\$140.3	\$126.9	\$101.0	\$118.8	\$143.9	\$256.7	\$265.1	\$285.5			\$141.9	+\$16.8	\$115.8	+\$16.6	\$223.4	+\$146.1		
Cost to supply wholesale customers (\$NZ/MWh)	\$143.8	\$109.6	\$122.2	\$95.8	\$76.3	\$109.2	\$132.6	\$244.8	\$260.3	\$277.8			\$125.2	+\$10.5	\$94.0	+\$9.5	\$211.5	+\$158.5		
Cost of financial contracts (\$NZ/MWh)	\$143.7	\$113.1	\$127.8	\$110.8	\$92.3	\$119.1	\$139.1	\$234.0	\$204.8	\$266.4			\$130.0	+\$16.3	\$104.7	+\$10.2	\$192.5	+\$137.7		
Total New Zealand customer connections	326,148	327,125	328,602	329,710	331,240	332,587	333,367	335,580	338,051	340,178			328,602	+19,230	332,587	+18,988	338,051	+18,273		
New Zealand generation																				
Hydro generation volume (GWh)	975	904	879	1,066	1,054	1,034	874	868	974	867			2,758	-474	3,153	-22	2,716	-542		
Wind generation volume (GWh)	115	113	158	126	125	128	117	83	87	116			385	+8	379	-22	287	-52		
Total generation volume (GWh)	1,089	1,017	1,037	1,192	1,179	1,162	991	951	1,061	983			3,144	-466	3,533	-44	3,003	-593		
Average generation price (\$NZ/MWh)	\$144.5	\$110.1	\$123.7	\$107.7	\$86.5	\$109.3	\$134.5	\$242.1	\$253.8	\$272.5			\$126.5	+\$11.5	\$101.2	+\$13.8	\$210.7	+\$153.0		
New Zealand hedging																				
Hedging volume (GWh)	318	266	268	241	314	308	312	345	431	348			852	+436	863	+389	1,088	+23		
Hedging cost average price (\$NZ/MWh)	\$109.3	\$104.6	\$101.2	\$96.2	\$93.6	\$93.2	\$98.5	\$115.6	\$127.0	\$110.3			\$105.3	+\$41.8	\$94.2	+\$28.9	\$115.2	+\$13.5		
Hedging spot revenue average price (\$NZ/MWh)	\$133.4	\$123.8	\$132.6	\$114.4	\$94.0	\$121.9	\$136.8	\$235.0	\$219.0	\$260.2			\$130.2	+\$10.9	\$109.7	+\$15.6	\$358.8	+\$282.9		
Future contract close outs (\$NZm)	-1.6	-1.9	-2.9	0.6	-2.9	-1.3	-1.5	-4.5	-3.6	-1.6			-6.4	-4.2	-3.7	-1.1	-9.7	-9.1		
Australia contracted sales																				
Retail contracted electricity sales volume (GWh)	85	83	66	61	55	56	57	53	58	59			234	+49	171	+26	168	+13		
Average electricity contracted sales price ¹ (\$A/MWh)	\$142.7	\$137.7	\$146.3	\$140.0	\$144.9	\$132.2	\$131.8	\$129.7	\$124.1	\$127.2			\$142.2	-\$1.0	\$139.0	-\$28.5	\$128.5	-\$12.2		
Retail contracted gas sales volume (TJ)	312	280	157	142	52	48	31	31	42	116			749	+210	242	+8	104	-7		
Average gas contracted sales price ¹ (\$A/GJ)	\$14.7	\$11.5	\$12.0	\$15.5	\$22.2	\$23.3	\$29.8	\$28.0	\$24.2	\$13.0			\$12.9	-\$0.8	\$18.5	+\$1.9	\$27.0	+\$4.2		
Financial contract sales volumes ² (GWh)	26	33	29	42	41	40	42	38	42	17			88	-69	124	-73	121	-14		
Financial contracted sales average price (\$A/MWh)	\$67.6	\$65.7	\$66.5	\$66.8	\$66.8	\$66.4	\$86.4	\$86.4	\$86.4	\$49.8			\$66.5	-\$20.1	\$66.7	-\$13.1	\$86.4	-\$35.6		
Cost to supply electricity customers (\$A/MWh)	\$79.5	\$85.5	\$61.3	\$73.1	\$77.5	\$20.8	\$53.2	\$48.0	\$56.8	\$76.7			\$76.6	-\$40.2	\$57.5	-\$39.6	\$52.8	-\$87.2		
Cost to supply gas customers (\$A/GJ)	\$10.1	\$11.3	\$14.6	\$13.4	\$12.7	\$19.9	\$22.8	\$17.7	\$17.8	\$10.7			\$11.5	+\$0.5	\$14.5	+\$4.2	\$19.3	-\$2.0		
Cost of financial contracts (\$A/MWh)	\$56.7	\$53.5	\$37.0	\$52.2	\$54.4	\$50.0	\$33.2	\$30.2	\$39.1	\$52.8			\$49.1	-\$48.1	\$52.2	-\$23.2	\$34.3	-\$45.2		
Powershop electricity customer connections ⁷	136,696	137,530	138,289	139,162	140,346	140,965	141,203	141,643	141,998	142,086			138,289	+23,190	140,965	+16,297	141,998	+7,599		
Powershop gas customer connections ⁸	38,544	38,978	39,251	39,540	40,380	40,814	41,247	41,884	42,728	43,092			39,251	+12,722	40,814	+10,349	42,728	+7,336		
Australia generation																				
Wind generation volume (GWh)	34	60	57	44	41	43	39	31	27	30			151	-10	127	-2	97	-11		
Average wind generation price (\$A/MWh)	\$90.3	\$90.4	\$69.6	\$67.8	\$75.0	\$54.8	\$52.7	-\$54.4	\$58.9	\$63.2			\$82.6	-\$39.4	\$65.7	-\$47.1	\$20.4	-\$224.6		
Hydro generation volume (GWh)	0	4	14	12	41	40	41	24	24	28			19	-11	94	+46	89	+58		
Average hydro generation price (\$A/MWh)	-	\$51.7	\$39.0	\$59.0	\$72.6	\$86.3	\$37.6	\$33.3	\$43.7	\$68.2			\$41.9	-\$56.3	\$75.3	-\$2.4	\$38.0	-\$57.3		
PPA generation received (GWh)	27	33	34	30	27	29	28	24	25	25			94	-5	86	-4	78	-9		
Average PPA generation price [net of costs] (\$A/MWh)	-\$1.6	-\$3.8	-\$14.4	-\$2.2	-\$1.1	-\$10.7	-\$15.8	-\$18.2	-\$13.4	\$0.6			-\$7.0	-\$37.0	-\$4.7	-\$28.2	-\$15.8	-\$32.7		
Australia hedging																				
Hedging volume (GWh)	35	42	37	13	20	16	9	15	13	23			115	+4	49	-99	37	-88		
Hedging costs (\$A/MWh)	\$48.4	\$78.3	\$82.6	\$204.9	\$176.2	\$99.7	\$482.6	\$266.8	\$266.6	\$180.3			\$70.6	-\$26.7	\$157.9	+\$56.7	\$319.2	+\$194.4		
Hedging spot revenue average price (\$A/MWh)	\$18.6	\$55.8	\$40.6	\$149.6	\$71.6	\$69.7	\$109.7	\$82.2	\$50.4	\$186.2			\$39.5	-\$66.0	\$91.3	+\$11.7	\$77.9	-\$2.2		
Future contract close outs (\$A M)	-\$0.2	\$0.0	\$0.0	\$0.0	\$0.0	\$0.0	-\$0.3	-\$0.7	\$0.0	\$0.0			-\$0.3	-\$0.4	-\$0.1	-\$0.7	-\$0.9	-\$1.2		
Meridian Group																				
Employee and Operating Costs (\$NZ m)	21	21	21	21	22	21	18	21	22	22			63	-2	64	+2	61	-1		
Stay in Business Capital Expenditure (\$NZ m)	3	4	4	4	3	3	3	3	4	4			11	+0	10	-2	10	-0		
Investment Capital Expenditure (\$NZ m)	7	3	3	2	2	3	2	3	34	4			13	+8	7	+3	39	+34		
Total Capital Expenditure (\$NZ m)	10	7	7	6	5	6	5	6	38	8			24	+8	17	+1	49	+34		

FY20 operating information

	Jul 2019	Aug 2019	Sep 2019	Oct 2019	Nov 2019	Dec 2019	Jan 2020	Feb 2020	Mar 2020	Apr 2020	May 2020	Jun 2020
New Zealand contracted sales												
Residential sales volume (GWh)	165	166	140	129	101	98	97	92	111	124	151	170
Small medium business sales volume (GWh)	97	99	95	89	85	81	86	87	88	57	85	98
Agricultural sales volume (GWh)	42	65	76	89	138	181	200	163	131	71	65	43
Large business sales volume (GWh)	46	45	38	40	39	40	38	39	41	33	40	46
Corporate and industrial sales volume (GWh)	249	255	233	243	247	248	272	264	269	222	255	277
Retail contracted sales volume (GWh)	599	630	583	590	610	650	694	646	639	507	596	634
Average retail contracted sales price (\$NZ/MWh)	\$113.5	\$115.4	\$109.5	\$102.7	\$99.8	\$100.0	\$103.3	\$109.5	\$108.3	\$109.2	\$106.8	\$116.5
NZAS sales volume (GWh)	463	463	447	463	448	463	463	433	463	416	426	485
Financial contract sales volumes (GWh)	150	176	148	129	135	164	170	283	354	222	318	280
Average wholesale & financial contracts sales price (\$NZ/h)	\$69.9	\$70.9	\$68.4	\$67.0	\$65.3	\$62.3	\$66.5	\$68.7	\$66.7	\$64.8	\$65.4	\$66.5
Retail customer supply volumes (GWh)	645	662	581	623	650	669	733	682	666	537	624	661
Cost to supply retail customers (\$NZ/MWh)	\$110.4	\$135.6	\$129.3	\$130.2	\$112.7	\$57.1	\$95.1	\$67.9	\$67.4	\$50.1	\$132.3	\$132.2
Cost to supply wholesale customers (\$NZ/MWh)	\$97.9	\$120.5	\$126.1	\$118.7	\$89.6	\$45.4	\$76.8	\$36.6	\$44.7	\$43.4	\$113.4	\$144.3
Cost of financial contracts (\$NZ/MWh)	\$101.9	\$118.2	\$120.5	\$112.6	\$92.8	\$81.6	\$86.7	\$47.0	\$45.7	\$52.1	\$98.9	\$130.6
Total New Zealand customer connections	304,993	307,798	309,372	311,694	313,150	313,599	315,225	317,784	319,778	321,051	322,448	324,253
New Zealand generation												
Hydro generation volume (GWh)	1,111	1,106	1,015	980	1,049	1,147	1,095	1,077	1,085	959	1,176	958
Wind generation volume (GWh)	116	135	126	143	133	125	122	108	109	116	106	126
Total generation volume (GWh)	1,227	1,241	1,141	1,123	1,182	1,272	1,217	1,185	1,194	1,075	1,282	1,084
Average generation price (\$NZ/MWh)	\$100.7	\$122.7	\$121.9	\$121.4	\$93.7	\$51.4	\$77.1	\$43.4	\$52.1	\$41.9	\$116.0	\$126.8
New Zealand hedging												
Hedging volume (GWh)	145	139	132	145	148	182	296	342	428	239	218	317
Hedging cost average price (\$NZ/MWh)	\$65.0	\$63.2	\$62.2	\$64.4	\$67.3	\$64.4	\$96.1	\$100.7	\$106.4	\$77.4	\$70.1	\$87.6
Hedging spot revenue average price (\$NZ/MWh)	\$104.4	\$130.5	\$124.0	\$122.6	\$104.1	\$63.1	\$100.0	\$75.1	\$59.8	\$51.5	\$101.9	\$134.9
Future contract close outs (\$NZm)	-0.3	-0.6	-1.4	-1.5	-0.2	-0.9	-0.2	-0.2	-0.1	-2.0	-4.3	-2.3
Australia contracted sales												
Retail contracted electricity sales volume (GWh)	63	66	55	49	46	50	51	50	53	57	68	75
Average electricity contracted sales price ¹ (\$A/MWh)	\$149.8	\$147.0	\$131.2	\$168.0	\$174.0	\$161.1	\$130.0	\$150.4	\$142.0	\$121.1	\$146.5	\$147.6
Retail contracted gas sales volume (TJ)	176	192	171	119	64	51	22	37	52	108	231	270
Average gas contracted sales price ¹ (\$A/GJ)	\$13.9	\$14.0	\$13.4	\$13.8	\$18.9	\$20.0	\$33.4	\$22.2	\$18.7	\$12.5	\$15.4	\$12.5
Financial contract sales volumes ² (GWh)	54	43	60	65	63	68	46	43	46	7	19	22
Financial contracted sales average price (\$A/MWh)	\$83.3	\$86.1	\$90.1	\$80.1	\$80.1	\$79.2	\$122.0	\$122.0	\$122.0	\$176.6	\$69.5	\$59.8
Cost to supply electricity customers (\$A/MWh)	\$105.5	\$126.4	\$118.0	\$119.9	\$89.2	\$82.2	\$257.6	\$111.9	\$53.6	\$56.8	\$67.5	\$78.1
Cost to supply gas customers (\$A/GJ)	\$11.8	\$11.4	\$9.8	\$8.6	\$14.0	\$9.9	\$41.1	\$20.4	\$13.6	\$13.4	\$11.2	\$11.6
Cost of financial contracts (\$A/MWh)	\$86.9	\$101.0	\$103.6	\$100.1	\$68.3	\$58.2	\$138.8	\$52.2	\$45.8	\$87.4	\$39.8	\$42.3
Powershop electricity customer connections ⁷	111,373	112,995	115,099	118,721	121,575	124,668	127,847	131,647	134,399	135,205	135,628	136,202
Powershop gas customer connections ⁸	24,096	25,240	26,529	27,858	29,182	30,465	32,387	33,428	35,392	36,077	36,955	37,878
Australia generation												
Wind generation volume (GWh)	61	56	44	44	44	41	38	32	39	43	49	37
Average wind generation price (\$A/MWh)	\$115.7	\$124.7	\$127.3	\$125.5	\$110.3	\$101.9	\$225.9	\$474.6	\$77.8	\$54.2	\$61.4	\$79.2
Hydro generation volume (GWh)	3	7	19	17	15	16	14	9	8	4	1	0
Average hydro generation price (\$A/MWh)	\$81.0	\$104.0	\$99.2	\$99.4	\$66.9	\$64.4	\$153.1	\$56.4	\$43.8	\$39.1	\$39.9	\$58.5
PPA generation received (GWh)	35	34	30	31	30	29	29	28	30	30	32	28
Average PPA generation price [net of costs] (\$A/MWh)	\$22.9	\$30.3	\$38.4	\$45.2	\$16.5	\$7.8	\$59.5	\$1.4	-\$8.9	-\$14.5	-\$13.1	-\$9.1
Australia hedging												
Hedging volume (GWh)	36	39	36	50	48	50	39	43	42	36	40	37
Hedging costs (\$A/MWh)	\$87.3	\$98.6	\$105.6	\$102.1	\$109.8	\$93.9	-\$23.1	\$197.7	\$185.1	\$79.3	-\$49.6	\$80.6
Hedging spot revenue average price (\$A/MWh)	\$99.6	\$105.5	\$111.4	\$107.7	\$72.3	\$58.6	\$130.3	\$58.6	\$43.5	\$41.7	\$42.9	\$55.0
Future contract close outs (\$A M)	\$0.0	\$0.2	-\$0.1	\$0.0	\$0.7	-\$0.1	\$0.0	\$0.5	-\$0.1	\$0.8	\$0.7	\$0.0
Meridian Group												
Employee and Operating Costs (\$NZ m)	21	21	22	22	22	19	19	21	21	20	19	31
Stay in Business Capital Expenditure (\$NZ m)	4	3	4	4	4	4	3	3	4	3	3	6
Investment Capital Expenditure (\$NZ m)	1	2	2	1	2	1	1	2	2	1	1	3
Total Capital Expenditure (\$NZ m)	5	5	6	5	6	5	4	5	6	4	4	9

Glossary

Hedging volumes	buy-side electricity derivatives excluding the buy-side of virtual asset swaps
Average generation price	the volume weighted average price received for Meridian's physical generation
Average retail contracted sales price	volume weighted average electricity price received from retail customers, less distribution costs
Average wholesale contracted sales price	volume weighted average electricity price received from wholesale customers (including NZAS) and financial contracts
Combined catchment inflows	combined water inflows into Meridian's Waitaki and Waiau hydro storage lakes
Cost of hedges	volume weighted average price Meridian pays for derivatives acquired
Cost to supply contracted sales	volume weighted average price Meridian pays to supply contracted customer sales and financial contracts
Contracts for Difference (CFDs)	an agreement between parties to pay the difference between the wholesale electricity price and an agreed fixed price for a specified volume of electricity. CFDs do not result in the physical supply of electricity
Customer connections (NZ)	number of installation control points, excluding vacants
FRMP	financially responsible market participant
GWh	gigawatt hour. Enough electricity for 125 average New Zealand households for one year
Historic average inflows	the historic average combined water inflows into Meridian's Waitaki and Waiau hydro storage lakes over the last 85 years
Historic average storage	the historic average level of storage in Meridian's Waitaki catchment since 1979
HVDC	high voltage direct current link between the North and South Islands of New Zealand
ICP	New Zealand installation control points, excluding vacants
ICP switching	the number of installation control points changing retailer supplier in New Zealand, recorded in the month the switch was initiated
MWh	megawatt hour. Enough electricity for one average New Zealand household for 46 days
National demand	Electricity Authority's reconciled grid demand www.emi.ea.govt.nz
NEM	Australia's national energy market, comprising Queensland, New South Wales (including the Australian Capital Territory), Victoria, South Australia, and Tasmania
NZAS	New Zealand Aluminium Smelters Limited
Retail sales volumes	contract sales volumes to retail customers, including both non half hourly and half hourly metered customers
Financial contract sales	sell-side electricity derivatives excluding the sell-side of virtual asset swaps
TJ	Terajoules
Virtual Asset Swaps (VAS)	CFDs Meridian has with Genesis Energy and Mercury New Zealand. They do not result in the physical supply of electricity