

Corporate Update

Exploring in a world class base metal district
– McArthur River Region, NT, Australia

Unlocking high grade gold – Colombia

August 2016

ASX:PMY

Nature of this document: The purpose of this presentation is to provide general information about Pacífico Minerals Limited (the 'Company'). Unless otherwise stated herein, the information in this presentation is based on the Company's own information and estimates. In attending this presentation or viewing this document you agree to be bound by the following terms and conditions.

Not an offer: This presentation is for information purposes only and does not constitute or form any part of any offer or invitation to sell or issue, or any solicitation of any offer to purchase or subscribe for, any securities in the Company in any jurisdiction. This presentation and its contents must not be distributed, transmitted or viewed by any person in any jurisdiction where the distribution, transmission or viewing of this document would be unlawful under the securities or other laws of that or any other jurisdiction.

Not financial product advice: This presentation does not take into account the individual investment objectives, financial situation and particular needs of each of the Company's Shareholders. You may wish to seek independent financial and taxation advice before making any decision in respect of this presentation. Neither the Company nor any of its related bodies corporate is licensed to provide financial product advice in respect of the Company's securities or any other financial products.

Forward-looking statements: Certain statements in the presentation are or may be "forward-looking statements" and represent the Company's intentions, projections, expectations or beliefs concerning, among other things, future operating and exploration results or the Company's future performance. These forward looking statements speak, and the presentation generally speaks, only at the date hereof. The projections, estimates and beliefs contained in such forward looking statements necessarily involve known and unknown risks and uncertainties, and are necessarily based on assumptions, which may cause the Company's actual performance and results in future periods to differ materially from any express or implied estimates or projections.

Disclaimer: No representation or warranty, express or implied, is made by the Company that the material contained in this presentation will be achieved or prove to be correct. Except for statutory liability which cannot be excluded, each of the Company, its directors, officers, employees, advisers and agents expressly disclaims any responsibility for the accuracy, fairness, sufficiency or completeness of the material contained in this presentation, or any opinions or beliefs contained in this document, and excludes all liability whatsoever (including in negligence) for any loss or damage which may be suffered by any person as a consequence of any information in this presentation or any error or omission there from. The Company is under no obligation to update or keep current the information contained in this presentation or to correct any inaccuracy or omission which may become apparent, or to furnish any person with any further information. Any opinions expressed in the presentation are subject to change without notice.

Unverified information: This presentation may contain information (including information derived from publicly available sources) that has not been independently verified by the Company.

Monetary values: Unless otherwise stated, all dollar values are in Australian dollars (A\$).

Subject to change: The information in this presentation remains subject to change without notice.

Competent Person Statements:

The information in this announcement that relates to the Berrio Project, Urrao Project and Natagaima tenement application is based on information compiled by Mr David Seers, who is a Member of the Australian Institute of Mining and Metallurgy. Mr Seers provides his services to Pacífico Minerals Limited on a consulting basis. Mr Seers has sufficient experience which is relevant to the style of mineralisation and type of deposit under consideration and to the activity which he is undertaking to qualify as a Competent Person as defined in the 2012 Edition of the "Australasian Code for Reporting of Exploration Results, Mineral Resources and Ore Reserves". Mr Seers consents to the inclusion in this presentation of the matters based on information in the form and context in which it appears.

The information in this announcement that relates to the Borroloola West Project is based on information compiled by Mr David Pascoe, who is a Member of the Australian Institute of Geoscientists. Mr Pascoe is contracted exclusively to Pacífico Minerals Limited. Mr Pascoe has sufficient experience which is relevant to the style of mineralisation and type of deposit under consideration and to the activity which he is undertaking to qualify as a Competent Person as defined in the 2012 Edition of the "Australasian Code for Reporting of Exploration Results, Mineral Resources and Ore Reserves". Mr Pascoe consents to the inclusion in this presentation of the matters based on information in the form and context in which it appears.

- Board and Management team with proven track record of identifying, funding and developing projects
 - Pacifico is the Operator of a Joint venture with Sandfire Resources NL. (Pacifico 51% / Sandfire 49%) on the Borroloola West Project, NT, tenement package extends over 135km.
 - Exciting RC drill program underway shortly to test for zinc and copper mineralisation.
 - Zinc prospects at Berjaya and Four Mile occur in the same rock sequence (Barney Creek Formation) as the world class McArthur and Teena zinc-lead deposits, and lie only 20km and 60km respectively to the west.
 - Significant copper mineralisation intersected during 2015 drilling at Coppermine Creek prospect. Gordons Fault is recognised as the focus for mineralisation and has recently been mapped a further 5km to the east
-
- Valuable in country experience with Pacifico having been operating in Colombia since 2011.
 - Flagship Berrio Gold Project situated within the Segovia gold belt, the most prolific gold belt in Colombia from which gold has been exploited for 150+ years
 - Underground channel sampling of artisanal workings yielded multiple samples >1 oz/t Au at a faulted contact which has been mapped for 6.2km's with an additional 7.8km of projected strike
 - Pipeline of quality projects in Colombia including the Natagaima prospect highly prospective for precious and base metals

Board and Management

Simon Noon

Managing Director

Richard Monti

Non Executive Chairman

Peter Harold

Non Executive Director

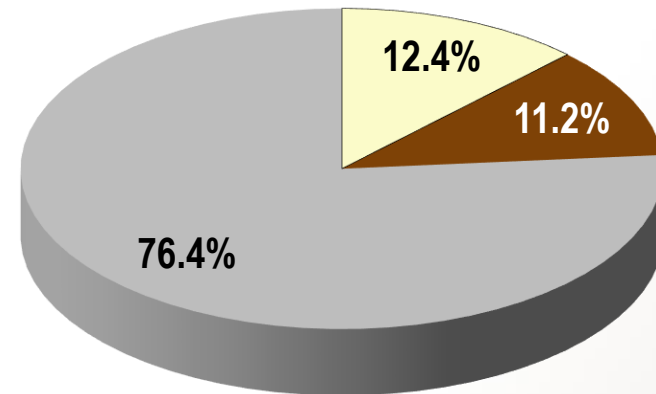
Andrew Parker

Non Executive Director

Barrie Bolton

Head of Project Development

Shareholder breakdown – Top 20 owns 56%



□ Institutions/Funds ■ Directors/Management ■ Other

Capital structure

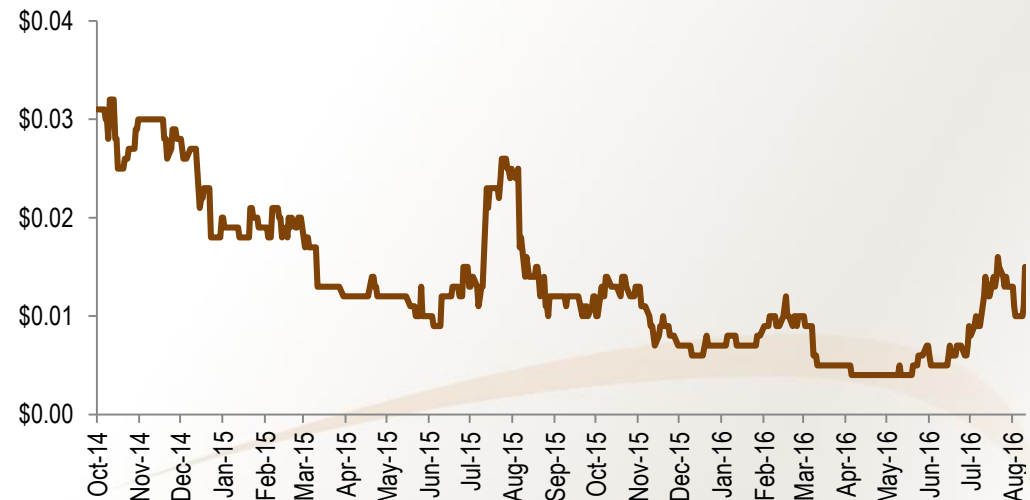
As at 11 August 2016

Share Price	\$	0.014
No. of Shares Outstanding	m	593
Options on Issue	m	43*
Market Cap. (undiluted)	\$m	8.3
Cash**	\$m	1.4
Debt**	\$m	0.0
Enterprise Value	\$m	6.9

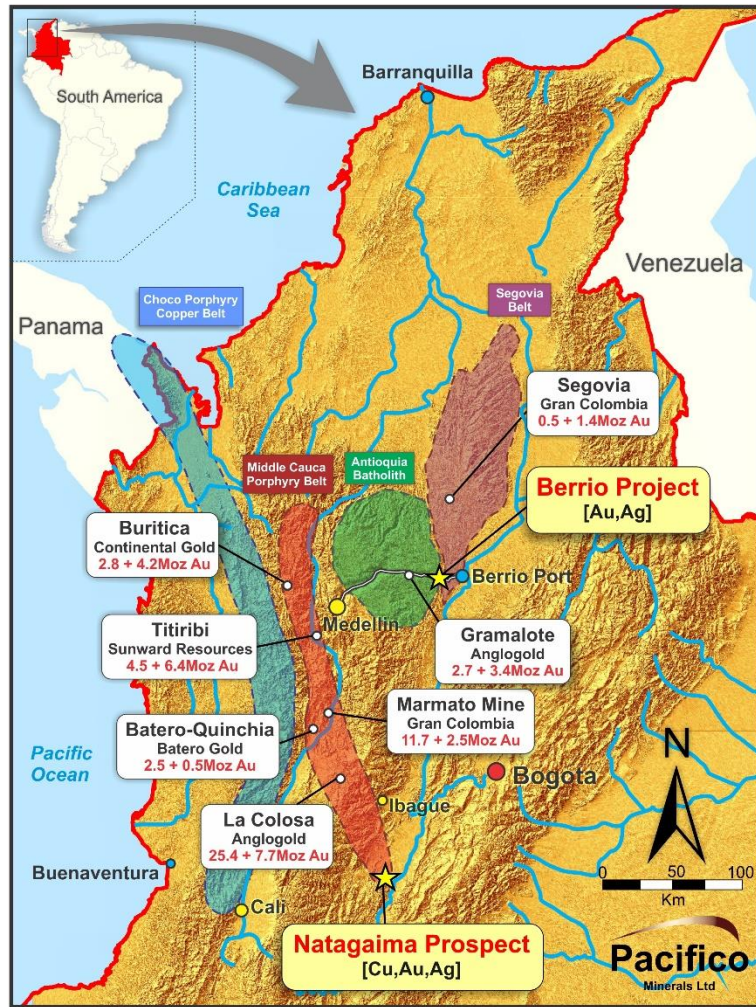
*Options consist of 36.6M 3c strike, and 6.4M 6c strike, majority expire 19 August 2016

**As at 30 June 2016

Share price performance

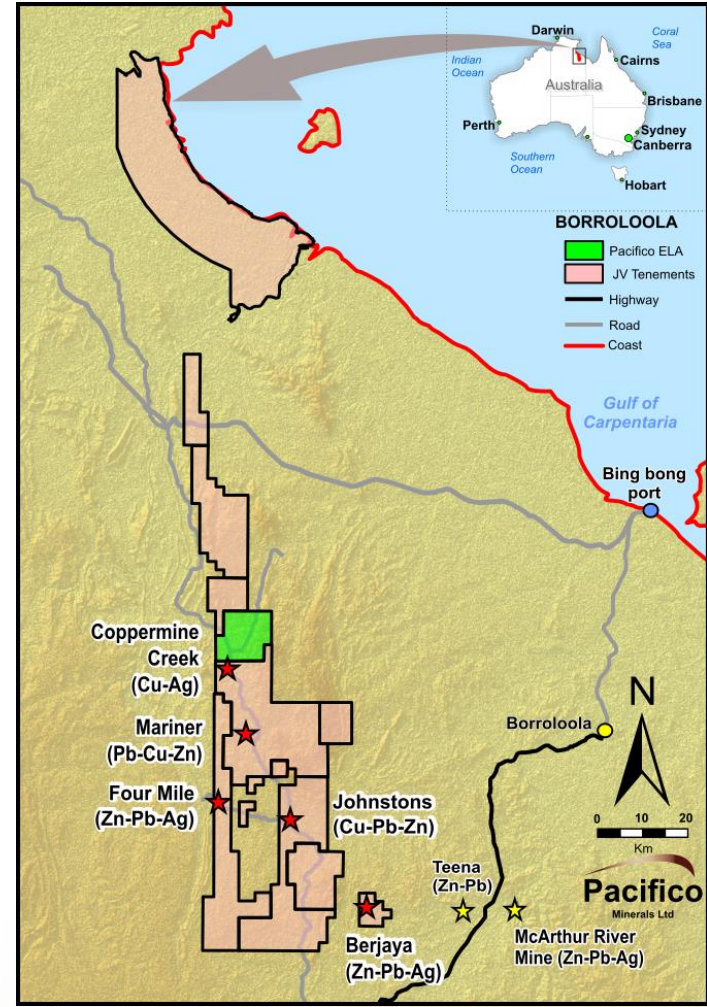


Colombia



Project locations in relation to gold discovered resources (M&I + INF)

Australia

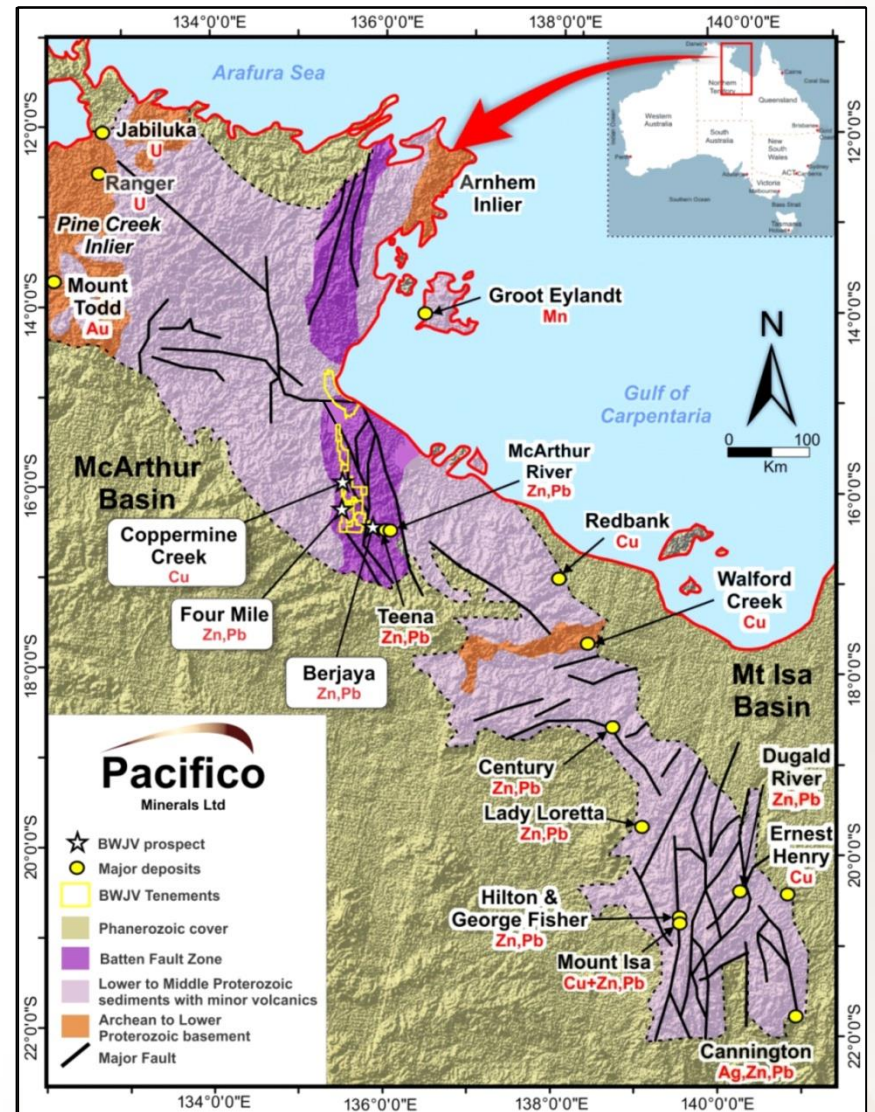


Borroloola West Project – Tenements and main prospects

Zinc, Silver and Copper Project in the Northern Territory

Project overview

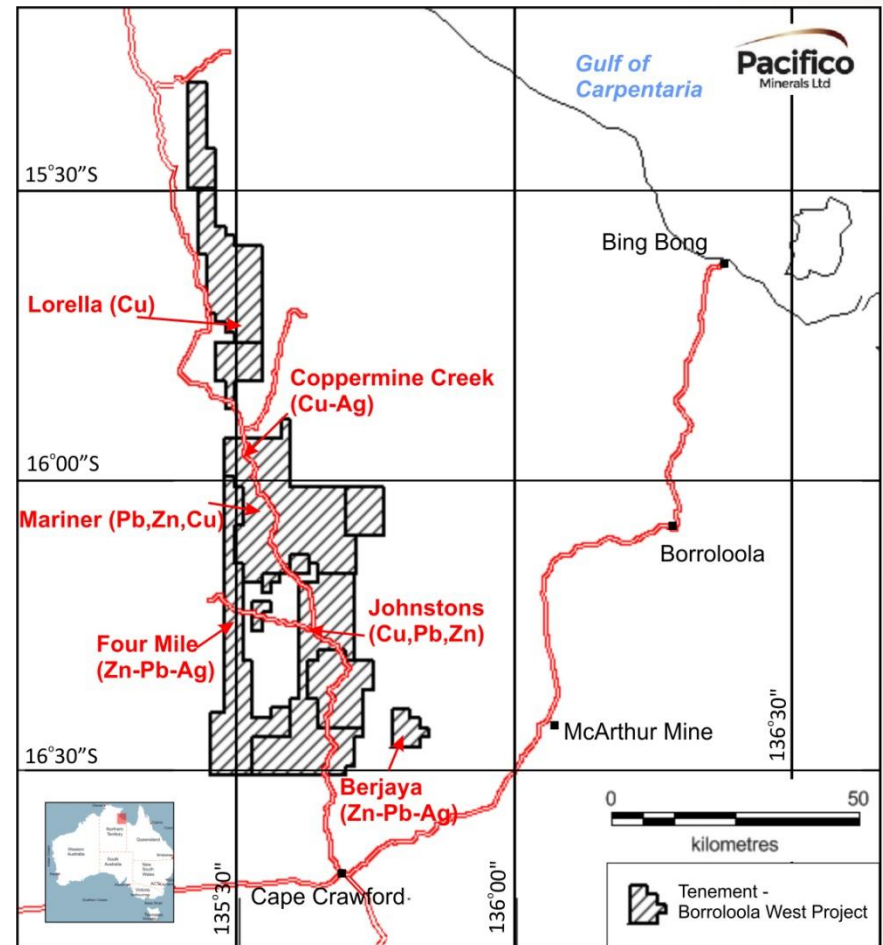
- Pacifico has 51% interest in Borroloola West Joint Venture and Sandfire Resources NL (49%). Sandfire supportive of exploration strategy and contributing their share.
- Outstanding and previously underexplored ground package covering ~1,800km² in East Arnhem Land of the Northern Territory
- Project area underlain by the McArthur Basin, one of interconnected Proterozoic basins which host several world class mines including McArthur River (just 30km east of Pacifico's project area), Mount Isa and Century.
- Rox Resources recent ASX announcement* of 58Mt of 11.1%Zn and 1.6%Pb lies only 20km east of the Berjaya tenement within the same stratigraphic package.
- Shallow drill targets for RC drilling at Four Mile (zinc-lead-silver), Berjaya (zinc-lead-silver), Coppermine Creek (copper), Johnstons (copper), and Mariner (zinc-lead-silver)



* Rox Resources Ltd ASX Announcement 1 June 2016

Prospects for RC drilling

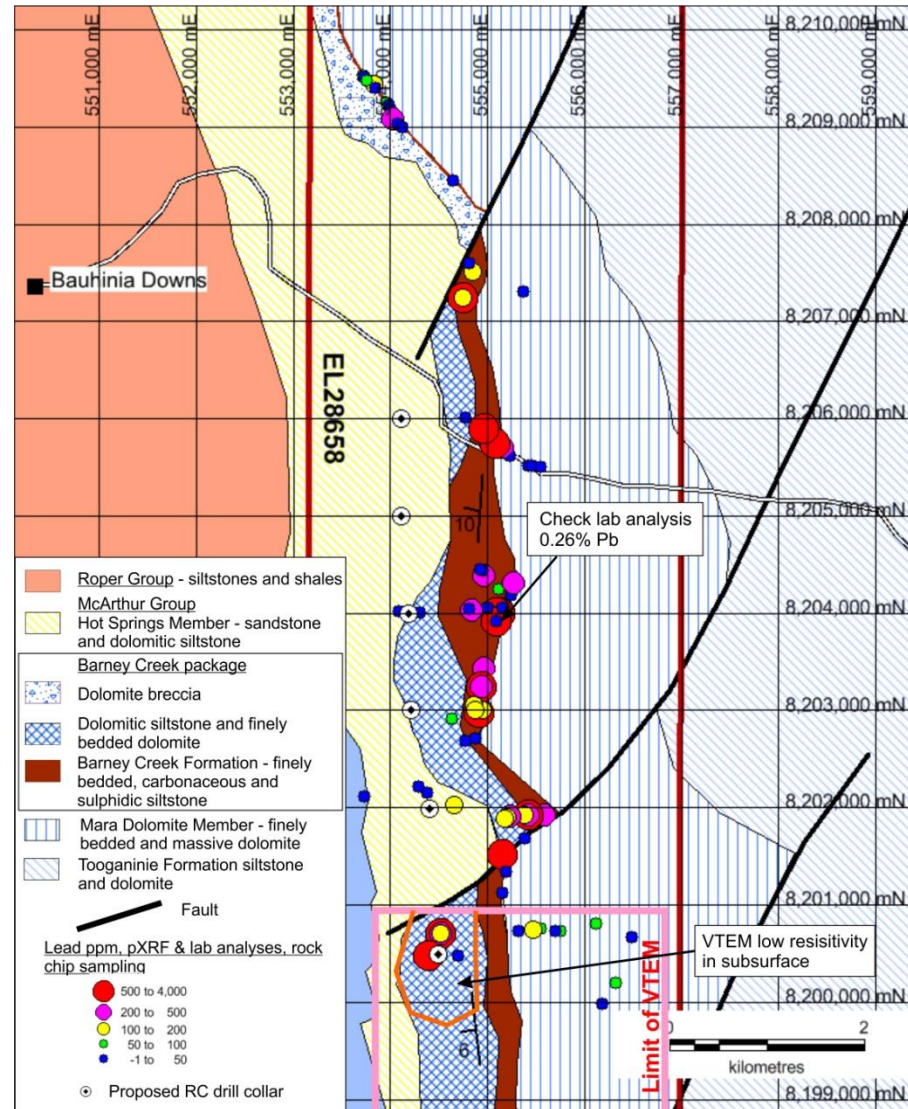
- **Four Mile** – target zinc–lead sediment hosted massive sulphide deposit (SHMS). Prospective Barney Creek Formation with surface lead values to 0.46%Pb (pXRF) are strong indication
- **Berjaya** - target zinc–lead SHMS deposit. Barney Creek stratigraphic package indentified in highly weathered terrane
- **Mariner** – zinc, silver and lead mineralisation intersected in previous drilling by BHP and MIM. RC drill targets established along strike to north.
- **Coppermine Creek** – target Mount Isa style copper deposit. Gordons Fault recognised as focus for alteration and copper mineralisation. Recent mapping extended mineralised Gordons Fault 5km east.
- **Johnstons** – target copper, zinc, lead. Surface copper and lead mineralisation in breccias within a NNE trending shear zone, potential for significant extensions under cover. Mapping defines copper rich zone extending south



Borroloola West Project area

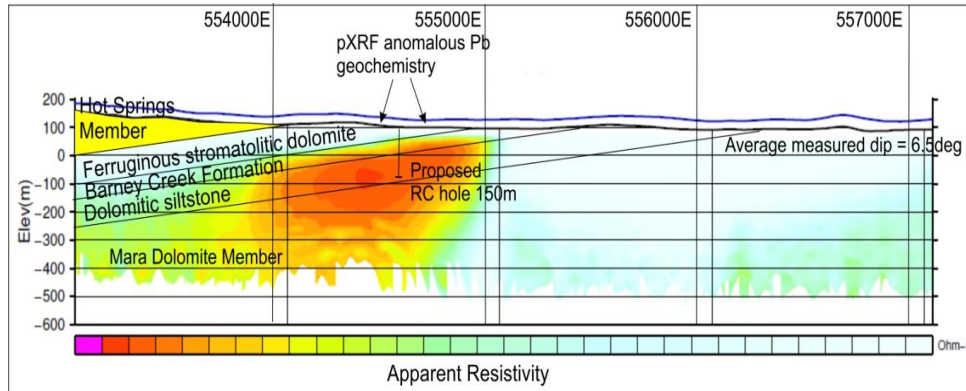
Four Mile (Zn-Pb-Ag)

- 7km strike of potentially mineralised Barney Creek Formation defined, open to the south
- Rock chips consistently anomalous in Pb, Zn and As with anomalous lead values up to 0.26% Pb (lab analysis)
- Lead geochemistry is the main indicator element for zinc – lead mineralisation in this poorly outcropping, highly weathered terrain
- RC drill targets within shallow, low angle dipping mineralised Barney Creek Formation
- Discovered by Pacifico, historical exploration was non-effective stream sediment and soil sampling. No previous drilling in the vicinity.



Mapped geology, geochemistry and planned RC drill collars, Four Mile

Four Mile (continued)



Section - VTEM and geological interpretation

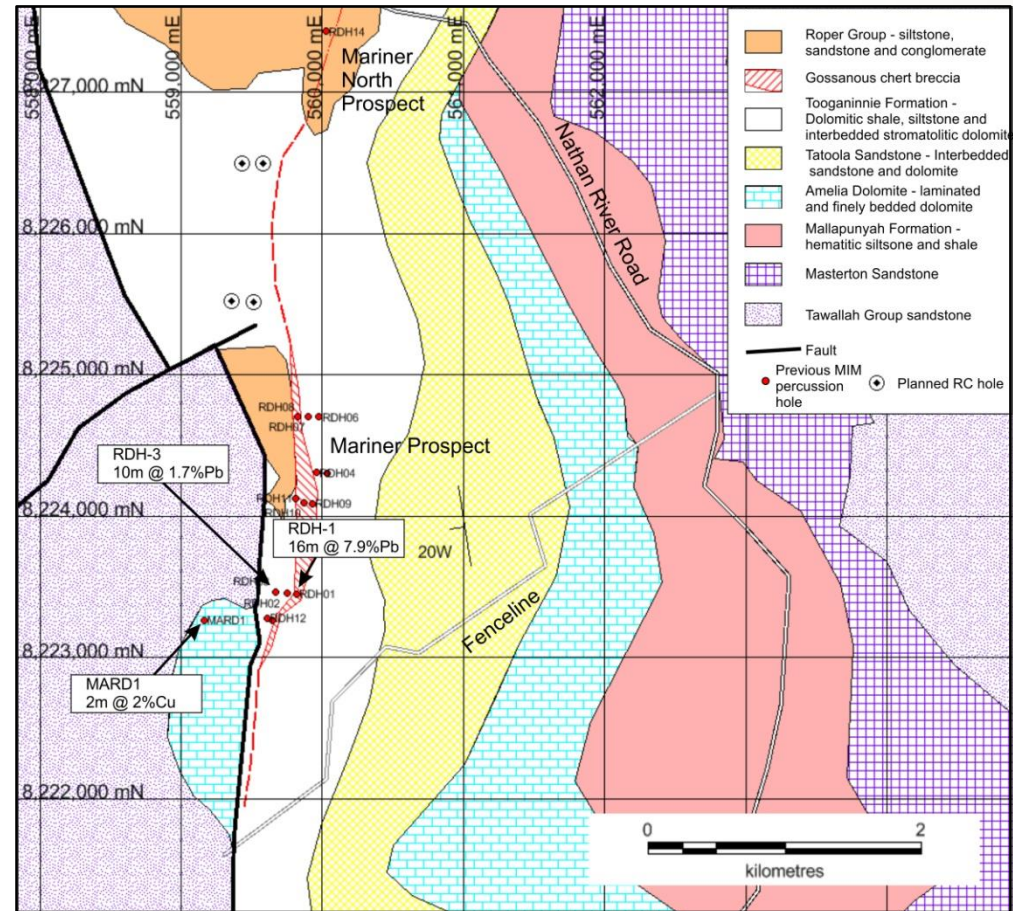


Four Mile float - thin gossanous stratabound lens of ex-sulphides in dolomitic siltstone, high Pb, Zn, and As.

- Shallow RC drill targets defined (to 150m)
- Targets based on geological mapping, interpretation, and VTEM flown by Pacifico
- Zone of low resistivity VTEM corresponds to shallow dipping possible Barney Creek Formation

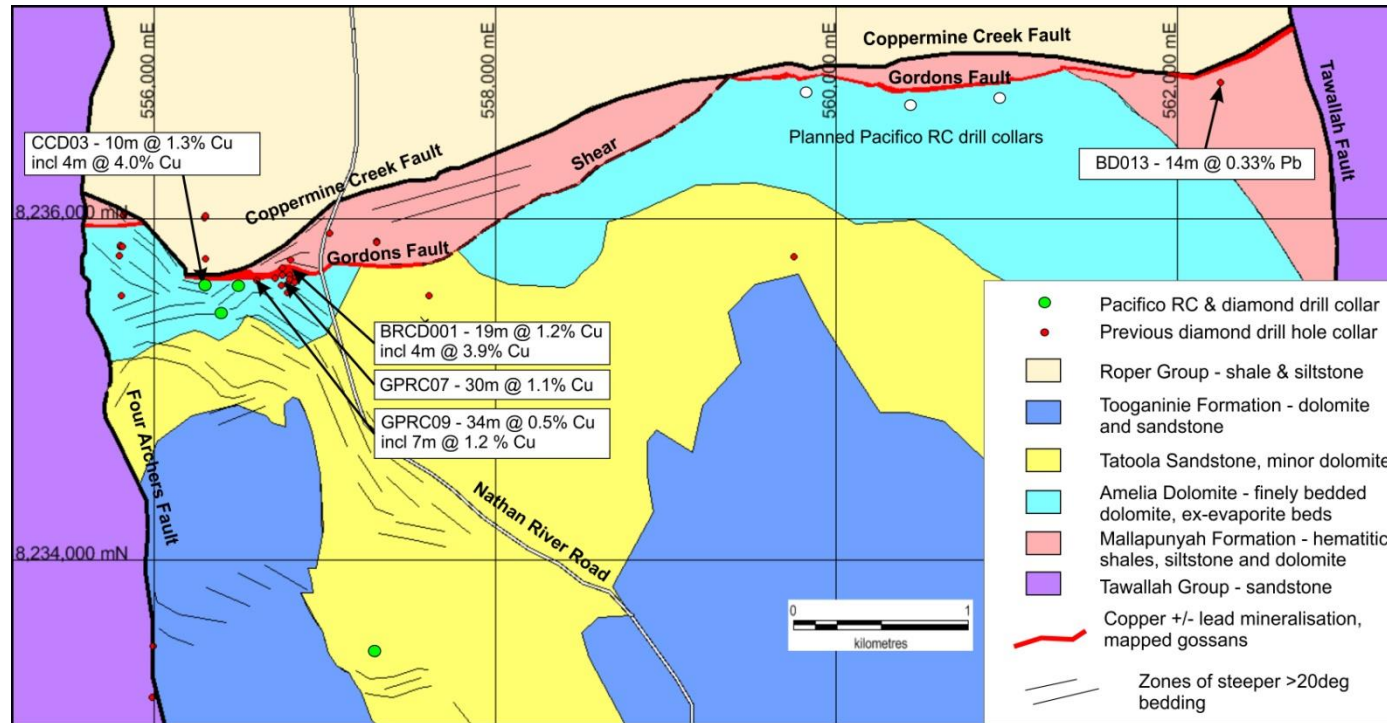
Mariner (Cu-Pb-Zn)

- Previous work by MIM in 1980's drill intersected 16m of 7.9%Pb.
- All mineralisation intersected was oxidised to cerussite, and may be indicative of zinc-lead primary sulphide mineralisation in this weathered terrain.
- Host rocks to stratabound mineralisation are shales and interbedded stromatolitic dolomite collapse breccia. Mapped as Tooganinie Formation.
- Downdip potential into primary base metal sulphides at Mariner itself limited by post-mineralisation north-south fault
- Closest downdip potential in no outcrop area between Mariner and Mariner North Prospects. Planned RC drilling



Mariner – showing previous percussion drilling, intersections, and planned RC collars

Coppermine Creek (Cu)

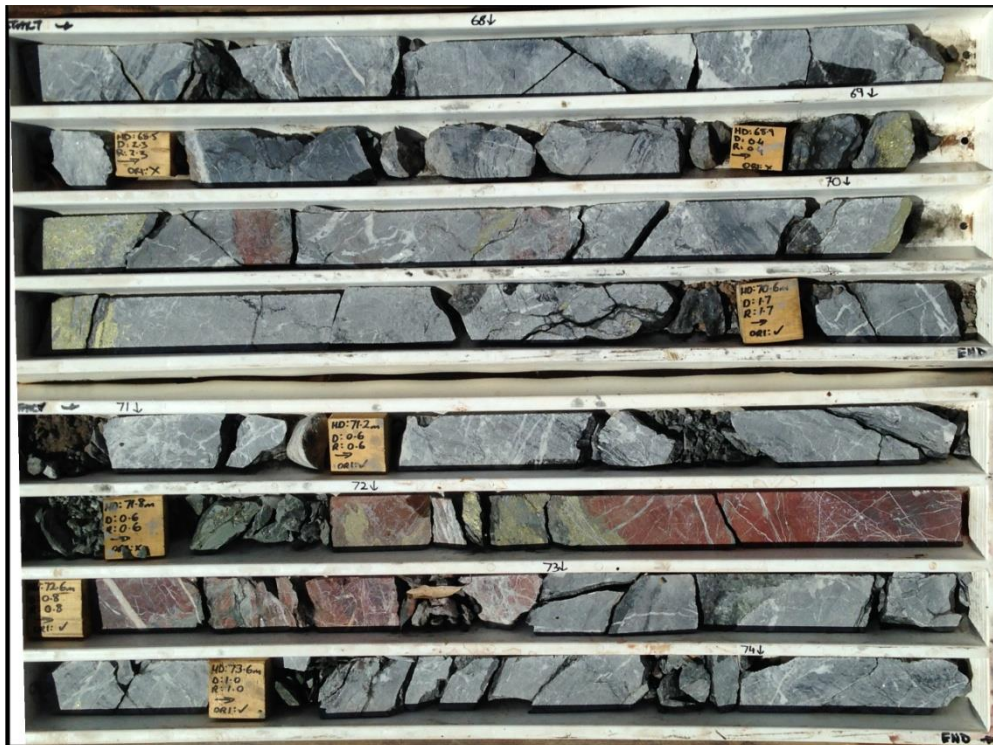


Geological Plan showing previous diamond drill collars, new geological interpretation and planned RC drilling

- Three holes drilled by Pacifico on the Gordons Fault zone in 2015 all intersected copper mineralisation, with a best intersection of 10m @ 1.3% Cu including 4m @ 4.0% Cu (CCD03).
- Gordons Fault (earlier than post-Roper Group Coppermine Creek Fault) is recognised as the focus for mineralisation and has been mapped out 5km to the east
- A 2km zone is mapped where the width of surface mineralisation is up to 15m, and pXRF values of up to 0.47%Cu and 3.3%Pb are obtained
- 3 RC holes are planned to test this zone

Coppermine Creek (continued)

- Extent of intense fracturing and alteration indicates previous drilling may have intersected only part of a larger copper mineralised system



Drill core CCD03 – semi-massive chalcopyrite bands in zone of brecciation, dolomitisation, and earlier brick red hematite alteration, hosted by Amelia Dolomite



Drill core CCD03 – semi-massive chalcopyrite bands. Contain only very minor pyrite

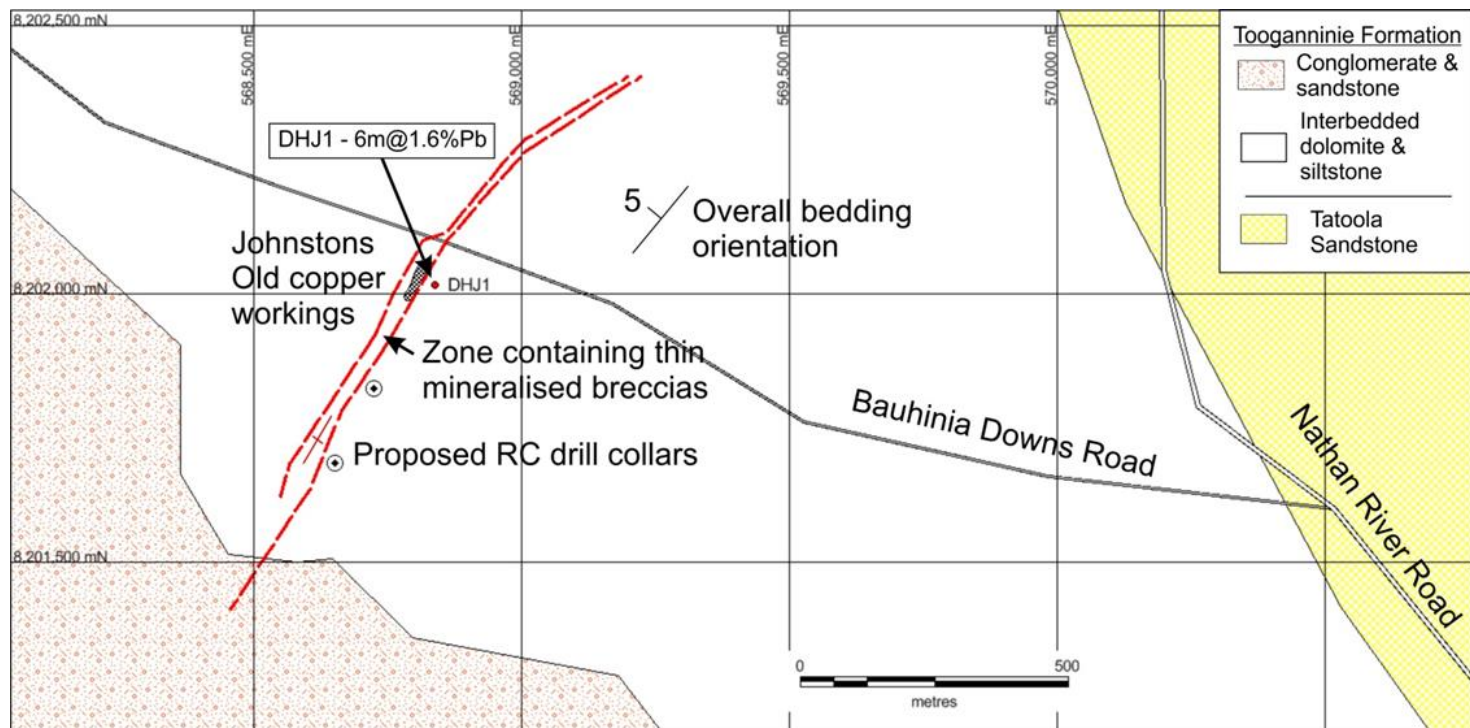
Berjaya (Zn-Pb-Ag)

- 30km along strike from McArthur River Mine – Australia's largest Zn-Pb-Ag producer and one of the largest Zn-Pb-Ag deposits in the world
- 20km along strike from Rox Resources' Teena deposit
- Contains several kilometers of Barney Creek Formation package and major growth faults – key geological components at both McArthur River and Teena
- Drill targets for RC drilling



Berjaya interpreted geology

Johnstons (Cu-Ag)



- 40m wide zone containing thin copper and lead mineralised breccias
- 300m copper rich (pXRF to 0.65%Cu) extension identified by mapping and rock chip sampling south of Johnstons workings
- Two RC holes planned, targeting copper mineralisation in the structure, and related stratabound ore

- Rich mineral endowment and established producer of gold, nickel, coal, oil and emeralds
- Limited exploration over the last 40 years with <5% of country explored with modern exploration techniques and technology
- Significant improvement in security in Colombia over the last decade
- Andean mountain chain is host to numerous and diverse metal deposits and is underexplored in Colombia
- Majors operating in Colombia include AngloGold Ashanti, Anglo American, BHP and Glencore
- Favourable mining royalties (3.2%) and corporate tax rate (25%).

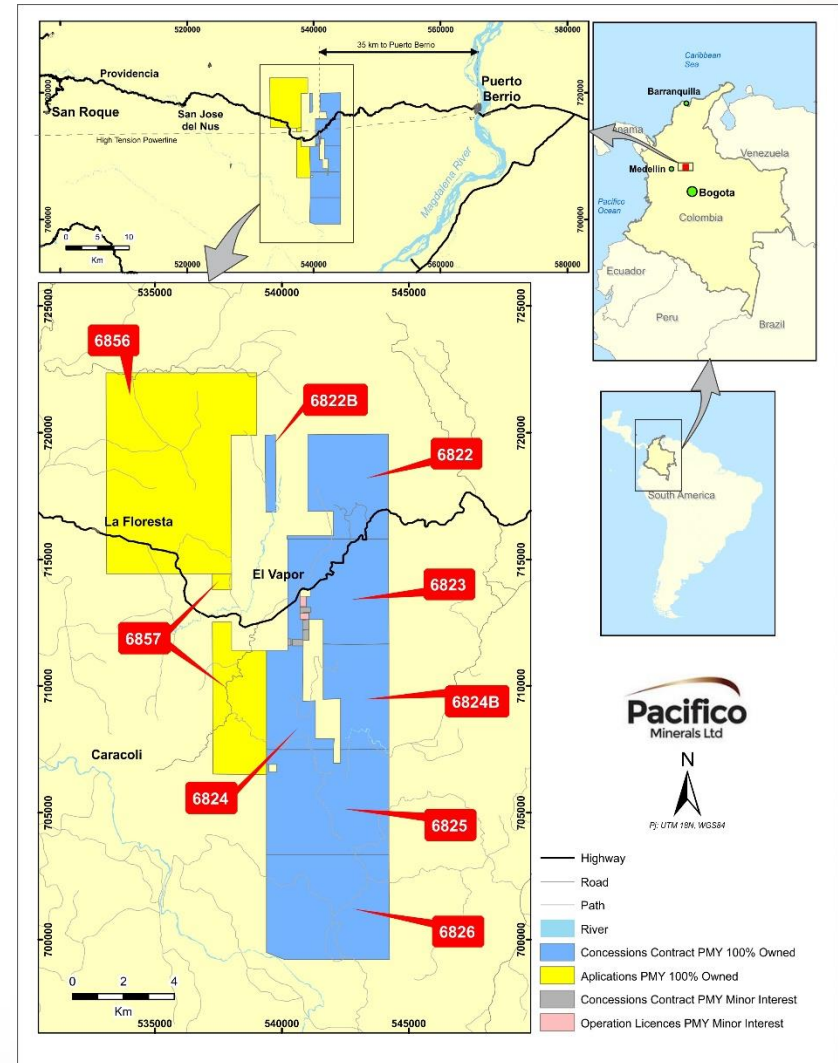


Major Andean porphyry copper deposits & mines (contained metal)

Project overview

- Characterised by a number of operational and historical artisanal-scale adits and tunnels
- Mining friendly local population and readily available workforce
- During 2014 Pacífico drill tested a small tenement package in which it holds a minor interest. The package contained 7 tenements covering 62 Ha. 22 holes were successfully completed with 13 holes intersecting over 10 g/t Au **including**; 10 holes over 15 g/t Au and 3 holes over an ounce per tonne¹
- During 2014 exploration it became apparent that prospective mineralisation extended far beyond the boundaries of the small tenement package
- In early 2015 Pacífico signed a binding agreement with AngloGold Ashanti SA to acquire a 100% interest in a suite of tenements surrounding and adjacent to the tenements Pacífico had drill tested

Flagship Au Project in Antioquia

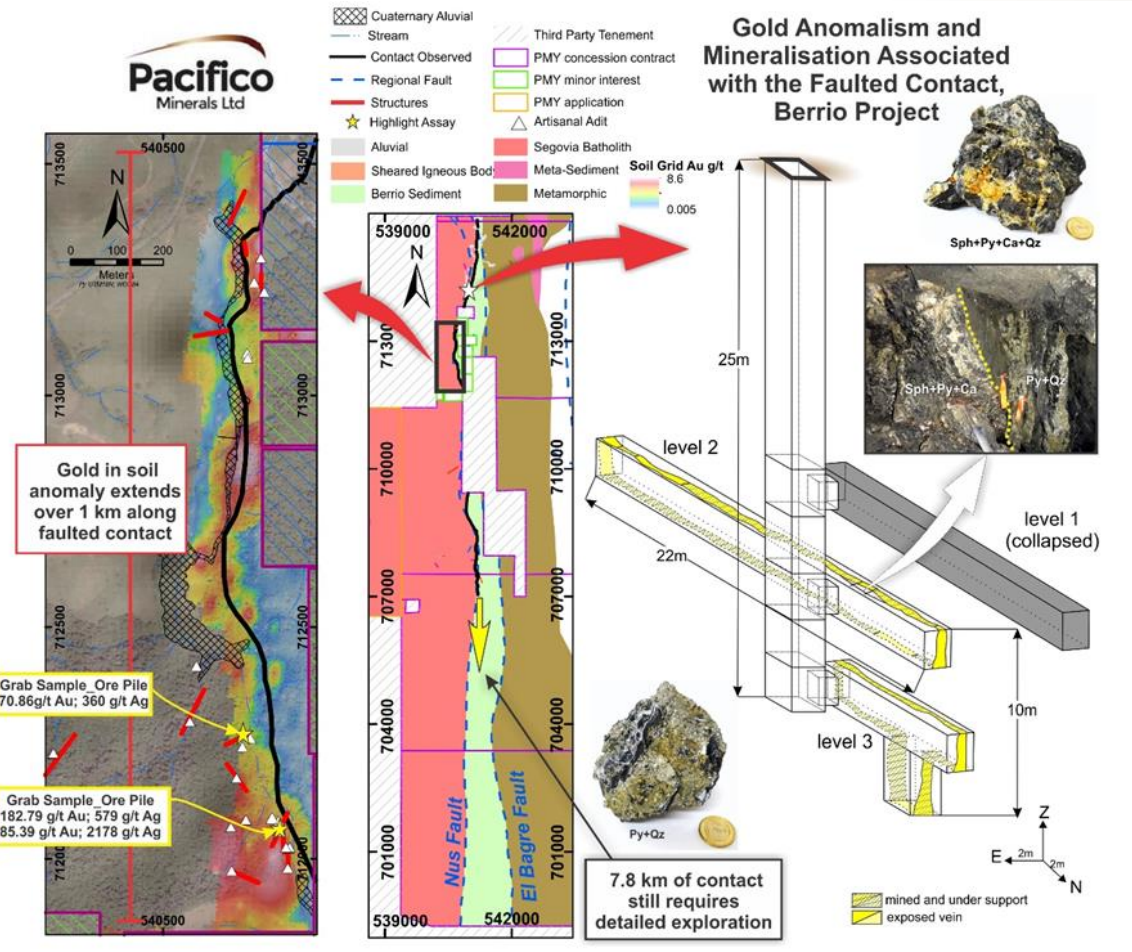


Tenement locations

¹ See ASX announcements 18 December and 14 August 2014 for drilling results on ground which Pacífico has a minor interest in.

Project overview (continued)

- Three distinct mineralised scenarios recognised to date:
 - Shear hosted lodes within Berrio sediments
 - Faulted contact between Segovia Batholith and Berrio Sediments
 - High grade veins in the Segovia Batholith
- Grab samples¹ at the faulted contact at Berrio have generated significant assays including:
 - 240.11 g/t Au, 1,178 g/t Ag and 2.02% Zn (M06120)
 - 46.88 g/t Au, 166 g/t Ag and 1.12% Zn (M06121)
- Underground channel sampling² from artisanal workings yielded multiple samples >1 oz/t Au:
- 11 drill holes completed early 2016 confirmed mineralisation at the contact³



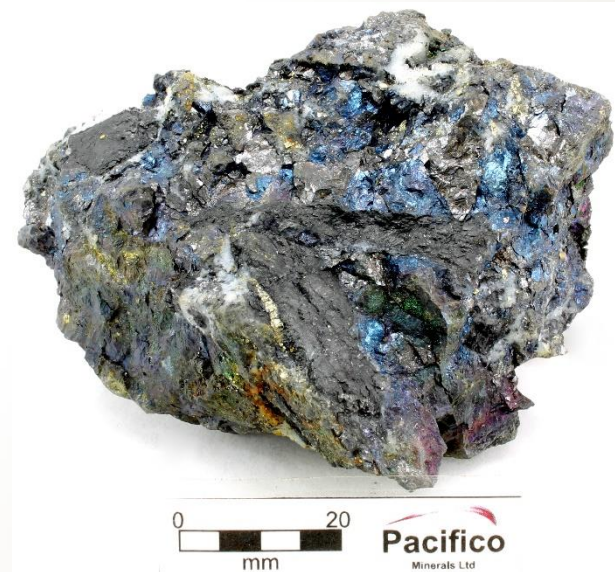
Gold anomalism and mineralisation associated with the faulted contact at Berrio

Milestones

- ✓ **Aug 2014:** Phase one drilling intersects wide zones of Au within which occur bonanza grade ore shoots
- ✓ **Dec 2014:** Phase two drilling confirms further high grade gold and defines a new mineralised shear zone
- ✓ **Jan 2015:** Signed landmark agreement with AngloGold Ashanti to significantly expand project area
- ✓ **Feb 2015:** Faulted contact, considered by Pacifico to be highly prospective, is mapped for 6.2 km in the new tenement package.
- ✓ **Mar 2015:** Rationalised project area
- ✓ **November 2015:** Underground channel sampling identifies high-grade gold mineralization at depth close to the faulted contact, returning multiple ounce gold and silver assays.
- ✓ **March 2016:** First round of drill testing at the contact confirms mineralisation at depth.
- ❑ **September 2016:** Extend soil sampling program
- ❑ **October 2016:** Further underground channel sampling as we gain access to abandoned artisanal mines.
- ❑ **November:** Targeted trenching across the mineralised zones within the Segovia Batholith.
- ❑ **Dec/January:** Focussed diamond drill program.



Brecciated shales with quartz fill and disseminated pyrite



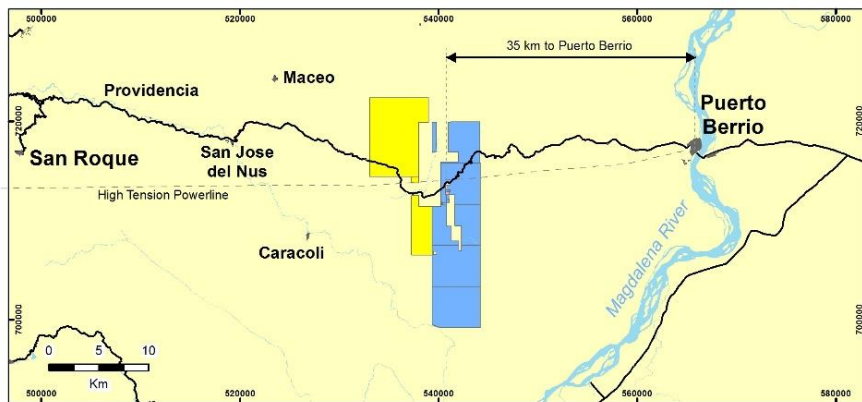
Sheared carbonaceous sediments with quartz, marmatite, galena and pyrite

Excellent infrastructure

- Sealed roads to towns provide easy access to services and labour
- Hydro power, with high tension power lines running through the project
- 35km along sealed roads to port (Puerto Berrío) which is navigable to the Caribbean Sea
- Mobile telephone coverage



High tension powerlines and highway



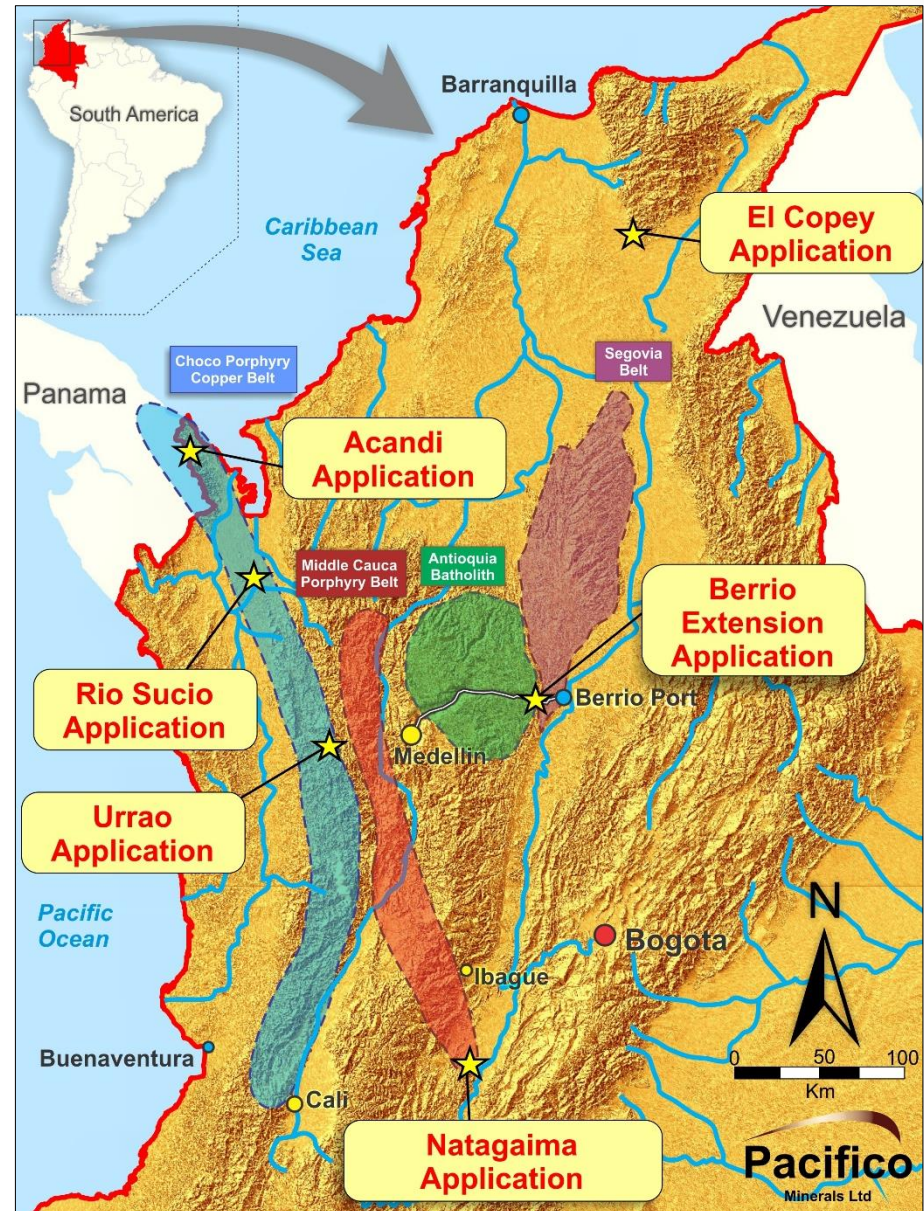
Berrio location map



Berrio port and Magdalena River

Pipeline of Quality Projects (Colombia)

- Pacífico's position in Colombia over several years provided the opportunity to identify and evaluate a range of exciting precious and base metal prospects around the country
- As ground became available Pacífico lodged several high quality tenement applications ahead of its rivals
- Tenement applications for 6 projects totalling >66,000ha are under review by the Colombian Ministry of Mines
- Pacífico's tenement applications are associated with highly prospective geological terrains including:
 - Choco Porphyry Copper Belt
 - Middle Cauca Porphyry Belt
 - Antioquia Batholith

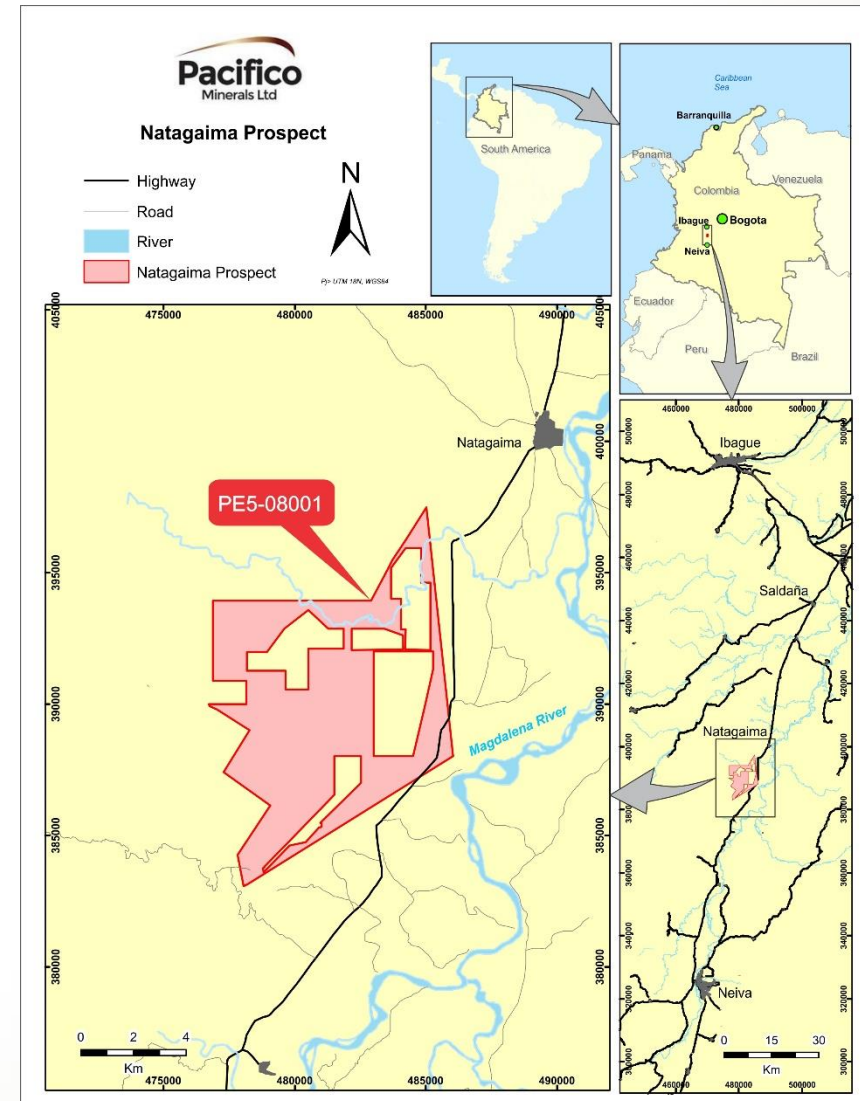


Tenement Application Locations

Cu-Au-Ag Tenement application in Tolima

Project overview

- Application lodged for the Natagaima project
- Colombia operates a “first right” system with its licence application process and Pacífico was the first, of many interested parties, to register its application over Natagaima upon the area becoming available
- Located within the Middle Cauca Porphyry Belt
- Near existing electrical lines, roads, rail line and a major river
- Mapping, outcrop sampling and project wide stream sediment sampling has generated very encouraging geochemical anomalies.

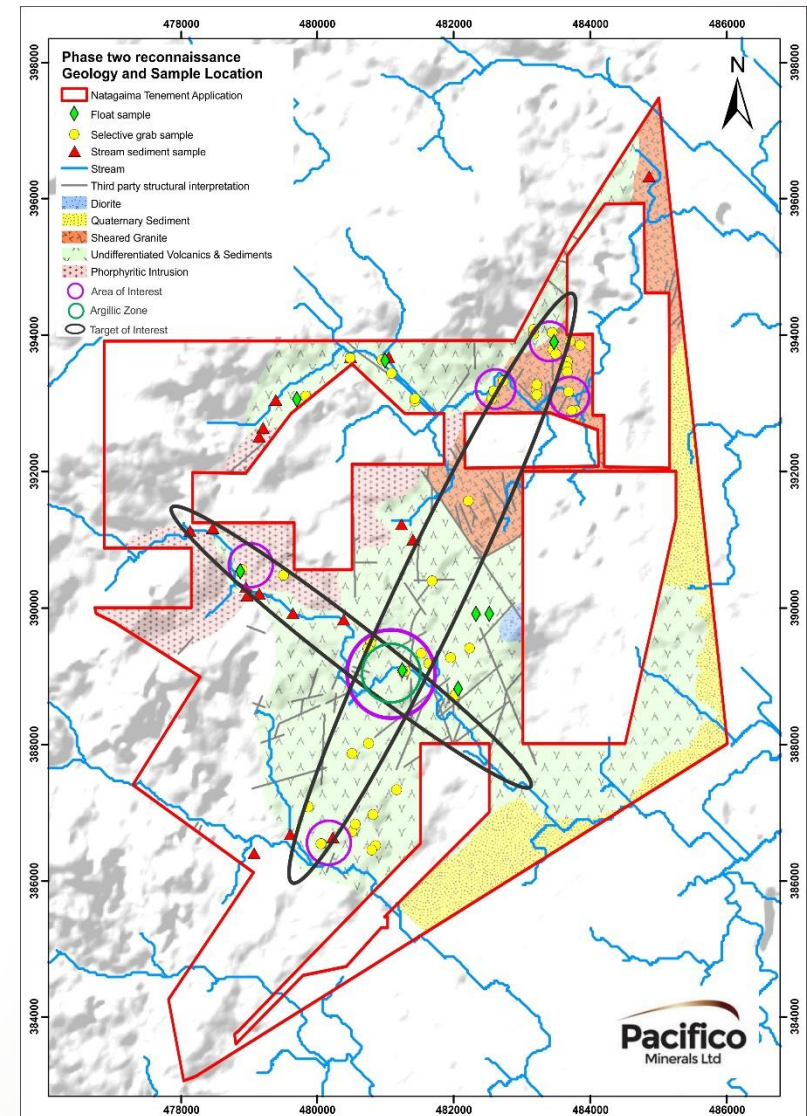


Tenement application location

Cu-Au-Ag Tenement application in Tolima

Project overview (continued)

- Initial work indicates prospectivity for epithermal and porphyry style mineralisation
- Two mineralised and intersecting trends identified are prospective for precious and base metals
- Selective grab sampling¹ generated the following grades:
 - 8.42g/t Au
 - 6.2% Cu
 - 2.3g/t Au
 - 1.35% Cu, 9.3% Pb and 1.12% Zn
 - 2.1% Cu and 1,395g/t Ag
- Several programs for follow-up exploration are under consideration including:
 - Targeted detailed mapping
 - Channel sampling of gold bearing quartz veins
 - Mag and IP survey
 - Trenching



¹ See ASX announcements 28 April and 27 January 2015. Selective grab samples may not be representative.

Australia

- Exploration underway and RC drill program¹ to commence shortly on high priority Joint Venture targets at Borroloola West:
 - August/September 2016: 2000m drill program to commence
 - September/October 2016: Drilling results announced
 - October/November: Drilling to continue subject to very encouraging results
- Granting² of new highly prospective exploration licence (ELA31354; Pacifico 100%)

Colombia

- October: Results from further underground channel sampling in active artisanal mines as they advance and abandoned mines as access is gained.
- November/December: Results from trenching across mineralised zones.
- January: Focussed low cost drill program to test high priority targets.

¹ Subject to heritage site clearances

² Grant subject to S.29 Native Title Act and S.71 MTA Objections



Contact us

Perth Office

Level 10, 553 Hay Street

PERTH WA 6000

Telephone: + 61 (0)8 6266 8642

Facsimile: +61 (0)8 9421 1008

Postal Address

GPO Box 2517

PERTH WA 6831

Email: info@pacificominerals.com.au

Web: www.pacificominerals.com.au