

<b>Deal Name:</b>	<b>Driver Australia One</b>
<b>Issuer:</b>	Perpetual Corporate Trust Limited (ABN 99 000 341 533) of Level 12, 123 Pitt Street, Sydney NSW 2000 Australia in its capacity as trustee of the Driver Australia One Trust.
<b>Originator of the Receivables:</b>	Volkswagen Financial Services Australia Pty Ltd
<b>Seller of the Receivables:</b>	Volkswagen Financial Services Australia Pty Ltd
<b>Servicer name:</b>	Volkswagen Financial Services Australia Pty Ltd
<b>Reporting Entity:</b>	Volkswagen Financial Services Australia Pty Ltd ABS Operations (Physical Address) Level 1, 24 Muir Road, Chullora NSW 2190 (Postal Address) Locked Bag 6252 Regents Park NSW 2143
<b>Contact:</b>	Phone: +61 2 9751 6257 Fax: +61 2 9695 6399 Email: ABSOperations.Australia@vwfs.com.au
<b>Corporate Service Provider:</b>	Perpetual Corporate Trust Limited (ABN 99 000 341 533) of Level 12, 123 Pitt Street, Sydney NSW 2000 Australia in its personal capacity.



## Contents

Page	Table of Contents
1	<a href="#">Cover</a>
2	<a href="#">Contents</a>
3	<a href="#">Reporting Details</a>
4	<a href="#">Parties Overview</a>
5	<a href="#">Transaction Events I</a>
6	<a href="#">Transaction Events II</a>
7	<a href="#">Transaction Events III</a>
8	<a href="#">Information regarding the Notes I</a>
9	<a href="#">Information regarding the Notes II</a>
10	<a href="#">Credit Enhancement</a>
11	<a href="#">Swap Fixing / Waterfall</a>
12	<a href="#">CRD Retention / Retention of Net Economic Interest</a>
13	<a href="#">Amortisation Profile I</a>
14	<a href="#">Amortisation Profile II</a>
15	<a href="#">Run Out Schedule I</a>
17	<a href="#">Run Out Schedule II</a>
18	<a href="#">Outstanding Contracts I</a>
20	<a href="#">Outstanding Contracts II</a>
21	<a href="#">Arrears</a>
23	<a href="#">Net Salvage Loss</a>
24	<a href="#">Net Salvage After Recoveries</a>
25	<a href="#">Pool Data I</a>
27	<a href="#">Pool Data II</a>
28	<a href="#">Pool Data III</a>
30	<a href="#">Pool Data IV</a>
32	<a href="#">Pool Data V</a>
34	<a href="#">Pool Data VI</a>
35	<a href="#">Pool Data VII</a>
39	<a href="#">Pool Data VIII</a>
41	<a href="#">Hardship Extensions</a>
42	<a href="#">Engine Type</a>
44	<a href="#">Contract Level Data</a>

## Reporting Details

### Deal Overview

Pool Cut Date	31/10/2013	Publication Date:	16/12/2015 (16th of each month)
Scheduled Date of Clean-Up-Call	01/2017	Payment Date:	21/12/2015 (21st of each month)
Legal Maturity Date	21/12/2021	Reporting Date:	30/11/2015
Issue Date	12/12/2013	Asset Collection Period:	from 01/11/2015 until 30/11/2015
Period No.:	24	Interest Accrual Period	from 23/11/2015 until 21/12/2015
Reporting frequency:	Monthly	Note Payment Period:	from 23/11/2015 until 21/12/2015
Next Payment Date:	21/01/2016	Days accrued:	28

Vehicle Type at Pool Cut	Number of Contracts	Percentage of Contracts	Outstanding Discounted Contract Balance	Percentage Outstanding Discounted Contract Balance
New	13,968	84.66%	438,595,554.40 AUD	87.72%
Used	2,531	15.34%	61,404,521.49 AUD	12.28%
<b>Total</b>	<b>16,499</b>	<b>100.00%</b>	<b>500,000,075.89 AUD</b>	<b>100.00%</b>

Credit Type at Pool Cut	Number of Contracts	Percentage of Contracts	Outstanding Discounted Contract Balance	Percentage Outstanding Discounted Contract Balance
Hire Purchase	2,970	18.00%	92,130,371.43 AUD	18.43%
Chattel Mortgage	5,094	30.87%	151,176,375.85 AUD	30.24%
Consumer Loan	8,435	51.12%	256,693,328.61 AUD	51.34%
<b>Total</b>	<b>16,499</b>	<b>100.00%</b>	<b>500,000,075.89 AUD</b>	<b>100.00%</b>

## Parties Overview

<b>Lead Managers:</b> <b>Australia and New Zealand Banking Group Limited</b> <b>(ABN 11 005 357 522)</b> ANZ Tower 242 Pitt Street Sydney, NSW 2000 Australia <b>The Royal Bank of Scotland plc</b> <b>(ABN 30 101 464 528)</b> Level 23, 88 Phillip Street Sydney NSW 2000 Australia	<b>Security Trustee:</b> <b>P.T. Limited</b> <b>(ABN 67 004 454 666)</b> Level 12 123 Pitt Street Sydney NSW 2000 Australia
<b>Trustee:</b> <b>Perpetual Corporate Trust Limited</b> <b>(ABN 99 000 341 533)</b> of Level 12, 123 Pitt Street, Sydney NSW 2000 Australia in its capacity as trustee of the Driver Australia One Trust.	<b>Trust Manager:</b> <b>Perpetual Nominees Limited</b> <b>(ABN 37 000 733 700)</b> of Level 12, 123 Pitt Street, Sydney NSW 2000 Australia in its capacity as the trust manager for the Driver Australia One Trust
<b>Sub Trust Manager:</b> <b>Volkswagen Financial Services Australia Pty Limited</b> <b>(ABN 20 097 071 460)</b> Level 1, 24 Muir Road, Chullora, NSW 2190	<b>Account Bank:</b> <b>Australia and New Zealand Banking Group Limited</b> <b>(ABN 11 005 357 522)</b> ANZ Tower 242 Pitt Street Sydney, NSW 2000 Australia
<b>Clearing Systems:</b> <b>Austraclear Limited</b> 30-32 Grosvenor Street. Sydney, NSW 2000	<b>Swap Counterparty:</b> <b>Hong Kong and Shanghai Banking Corporation Limited,</b> <b>Australia Branch</b> <b>(ABN 65 117 925 970)</b> Level 10, 580 George Street Sydney NSW 2000
<b>Servicer:</b> <b>Volkswagen Financial Services Australia Pty Limited</b> <b>(ABN 20 097 071 460)</b> Level 1, 24 Muir Road, Chullora, NSW 2190 email: ABSOperations.Australia@vwfs.com.au phone: +61 2 9751 6257	<b>Rating Agencies:</b> <b>Fitch Ratings</b> Attn.: James Zanesi Level 15, 77 King Street Sydney, NSW 2000 Australia email: australia.surveillance@fitchratings.com  <b>DBRS Inc.</b> Attn: ABS Surveillance, 35th Floor 140 Broadway New York, NY 10005 United States of America email: ABS_Surveillance@DBRS.com  <b>Standard &amp; Poor's</b> Attn.: Structured Finance Surveillance Level 45, 120 Collins Street Melbourne, VIC 3000 Australia email: mel_sfsurveillance@standardandpoors.com

## Transaction Events (I)

### Clean-Up Call Condition

Percentage of Current Outstanding Discounted Portfolio	25.93%	
Min. Percentage of Outstanding Discounted Portfolio	10.00%	The Clean-Up-Call Condition is expected to be reached in 01/2017.

### Clean-Up Call

VWFS Australia will have the right at its option to exercise a Clean-Up Call and to repurchase all (but not only some) of the Purchased Receivables from the Issuer at any time when the then outstanding Aggregate Discounted Principal Balance is less than ten (10) per cent. of the Aggregate Cut-off Date Discounted Principal Balance and, assuming the Transaction Documents are given full effect, all payment obligations under the Notes, including principal and accrued interest, will thereby be fulfilled in accordance with the Order of Priority (the Clean-up Call Conditions).

Repurchase of Receivables	Number of contracts	% of Contracts	Outstanding Discounted Balance	% of Outstanding Discounted Balance	Interest Compensation Payment	Re-Purchase Price
Current Period	-	0.00%	- AUD	0.00%	- AUD	- AUD
Previous Periods	-	0.00%	- AUD	0.00%	- AUD	- AUD
<b>Total</b>	<b>-</b>	<b>0.00%</b>	<b>- AUD</b>	<b>0.00%</b>	<b>- AUD</b>	<b>- AUD</b>

If a repurchase of receivables occurred, it would only result from non-eligibility as of the respective Pool Cut Date (which has been discovered at a later stage), a Legitimate Repudiation of a Receivables Contract, a Reloaded Contract or a Flat-Cancelled Contract.

### Transaction Party Replacements

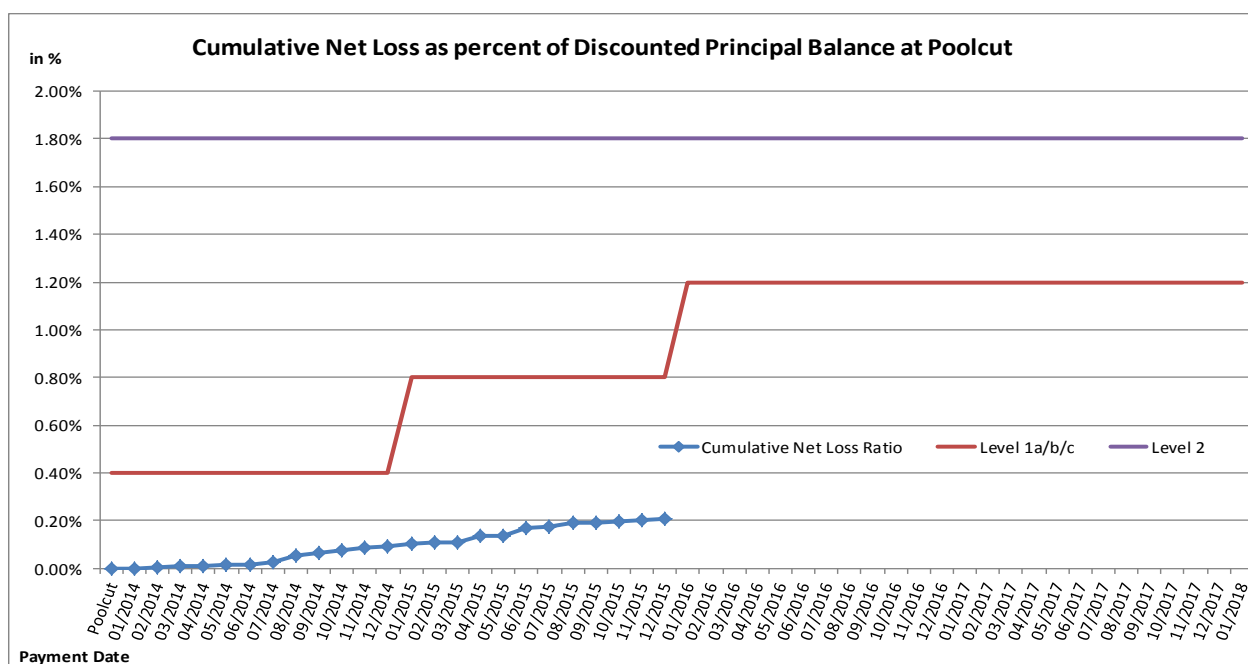
Capacity of Transaction Party	Date of Replacement	Reason for Replacement	Replaced Party	Replaced by

## Transaction Events (II)

### Credit Enhancement Increase Conditions

Level 1a Credit Enhancement Increase Condition - Cumulative Net Losses do not amount to 0.4% for any Payment Date prior to or during Dec 2014	<b>NO</b>
Level 1b Credit Enhancement Increase Condition - Cumulative Net Losses do not amount to 0.8% for any Payment Date from Jan 2015 but prior to or during Dec 2015	<b>NO</b>
Level 1c Credit Enhancement Increase Condition - Cumulative Net Losses do not amount to 1.2% for any Payment Date after Dec 2015	<b>NO</b>
Level 2 Credit Enhancement Increase Condition - Cumulative Net Losses do not amount to 1.8% for any Payment Date	<b>NO</b>

Net losses	Net Loss Amount
Net Salvage Loss registered in current Period	15,366.50 AUD
Cumulative Net Salvage Loss incl. current Period	1,025,655.21 AUD
Cumulative Net Salvage Loss as of the End of the Monthly Period	1,025,655.21 AUD
Discounted Balance as of Pool Cut Date	500,000,075.89 AUD
Cumulative Net Loss as percentage of Discounted Principal Balance at Pool Cut	0.20513%



### Transaction Events (III)

#### Account Bank:

Australia and New Zealand Banking Group Limited

Current Rating \*

Minimum required Rating (if no short term Rating available, the higher long term rating is applicable)

or

Fitch			S&P			DBRS		
Long Term	Short Term	Outlook	Long Term	Short Term	Outlook	Long Term	Short Term	Outlook
AA-	F1+	Stable	AA-	A-1+	Stable	AA	R-1H	Stable
A	F1	-	A	A-1	-	A	R1	-
A	F1	-	A+	-	-	A	R1	-

If the Account Bank ceases to have the Account Bank Required Rating it shall, at its own cost,  
(i) transfer the accounts to an Eligible Collateral Bank, or  
(ii) provide a guarantee from an Eligible Guarantor, or  
If none of the measures is taken within a given timespan, the Issuer may enter into new banking arrangements at its own initiative with another Account Bank.  
(Please refer to the Prospectus for a complete description of the mechanism)

**Required Rating:**

**Fulfilled**

#### Swap Counterparty

The Hongkong and Shanghai Banking Corporation Ltd

Current Rating \*

Minimum required Rating - Class A and Class B

or

Fitch			S&P			DBRS		
Long Term	Short Term	Outlook	Long Term	Short Term	Outlook	Long Term	Short Term	Outlook
AA-	F1+	Stable	AA-	A-1+	Stable	Not Rated	Not Rated	Not Rated
A	F1	-	A	A-1	-	A	-	-
A	F1	-	>A	-	-	A	-	-

If the Swap Bank falls below the above mentioned Minimum Rating (Level I) it shall provide Eligible Credit Support by means of Cash or certain types of Prime Debt Obligations

If the Swap Bank ceases to have the even lower Rating as an Eligible Swap Counterparty (Level II) it shall, at its own cost,  
(i) transfer all rights and obligations under the Swap Agreement to another Eligible Swap Partner or  
(ii) provide a guarantee from an Eligible Guarantor.  
If none of the measures is taken within a given timespan, the Issuer may enter into new arrangements at its own initiative with another Swap Bank.  
(Please refer to the Prospectus for a complete description of the mechanism)

**Required Rating:**

**Fulfilled**

#### Servicer

Volkswagen Financial Services Australia Pty Ltd

If the Monthly Remittance Condition is satisfied, VWFS Australia, as the Servicer, is required to pay collections of the Purchased Receivables (including proceeds from the disposition of any Financed Objects) received by it during each Monthly Period into the Distribution Account in a single deposit no later than the Payment Date for that Monthly Period.

If the Monthly Remittance Condition is not met, the Servicer must remit collections received by it in respect of the Purchased Receivables in accordance with the procedure outlined in detail in "ADMINISTRATION OF THE PURCHASED RECEIVABLES UNDER THE SERVICING AGREEMENT - Commingling".

**Monthly  
Remittance  
Condition:**

**Not fulfilled**

# Information regarding the Notes I

Rating at Issue Date	Class A	Class B
DBRS	AAA (sf)	A (high) (sf)
S&P	AAA(sf)	A+(sf)
Fitch	AAAsf	A+sf

Current Rating	Class A	Class B
DBRS	AAA (sf)	A (high) (sf)
S&P	AAA(sf)	A+(sf)
Fitch	AAAsf	AAsf

Information on Notes	Class A	Class B
Legal maturity date	21/12/2021	21/12/2021
Scheduled Clean Up Call	Jan 2017	Jan 2017
ISIN:	AU0000DAOHA1	AU0000DAOHB9
Common Code:	099515716	099515732
Nominal Amount	100,000.00 AUD	100,000.00 AUD

Information on Interest	Class A	Class B
Spread/ Margin	85 bps	180 bps
Index Rate	1-Month-BBSW	1-Month-BBSW
Fixed/Floating	floating	floating
Current Coupon	1-Month-BBSW + 85	1-Month-BBSW + 180
Day Count Convention	actual/365	actual/365



## Information regarding the Notes II

Monthly Period:	11/2015
Payment Date:	21/12/2015
Interest Accrual Period (from/until)	from 23/11/2015 until 21/12/2015
Days accrued	28
Index Rate	1-Month-BBSW
Base Interest Rate:	2.0450%
Day Count Convention	actual/365

Interest Payments	Class A	Class B
Total Interest Amount of the Reporting Period	216,879.00 AUD	41,149.67 AUD
Paid Interest	216,879.00 AUD	41,149.67 AUD

Unpaid Interest	Class A	Class B
Unpaid Interest in the Reporting Period	- AUD	- AUD
Cumulative unpaid Interest	- AUD	- AUD

Note Balance	Class A	Class B
Note Balance as of Poolcut	433,000,000.00 AUD	26,000,000.00 AUD
Note Balance as of the Beginning of the Period	97,657,088.00 AUD	13,950,983.80 AUD
Redemption Amount per Class	6,914,230.60 AUD	987,724.40 AUD
<b>Class Balance as of the End of the Period</b>	<b>90,742,857.40 AUD</b>	<b>12,963,259.40 AUD</b>

Payments to Investors per note	Class A	Class B
Interest Per Note	50.09 AUD	158.27 AUD
Principal Repayment by note	1,596.82 AUD	3,798.94 AUD
Number of Notes	4,330	260
Note Factor	0.209568	0.498587

Overcollateralisation Percentage	Class A	Class B
Initial OC Percentage at Poolcut	13.4000%	8.2000%
Current OC Percentage	30.0000%	20.0000%
Target OC Percentage	30.0000%	20.0000%

Subordinated Loan		
Balance as of the Beginning of the Period		16,595,460.66 AUD
Redemption		2,106,346.32 AUD
Balance as of the End of the Period		14,489,114.34 AUD

Collateral Loan		
Balance as of the Beginning of the Period		13,000,000.00 AUD
Redemption		- AUD
Balance as of the End of the Period		13,000,000.00 AUD

Issuer Subordinated Notes		
Balance as of the Beginning of the Period		304,512.81 AUD
Issue/(Redemption)		- AUD
Balance as of the End of the Period		304,512.81 AUD

## Credit Enhancement

Credit Enhancement as of Poolcut Date	% of Aggregate Discounted Balance	Value
Class B Note	5.20%	26,000,000.00 AUD
Subordinated Loan	6.80%	34,000,075.89 AUD
Overcollateralisation via Collateral Loan	1.40%	7,000,000.00 AUD
Cash Collateral Account	1.20%	6,000,000.00 AUD

Cash Collateral Account (CCA)	Value	in % of Outstanding Discounted Loan Balance as of Poolcut Date
<b>Initial Balance at Poolcut</b>	6,000,000.00 AUD	1.20%
<b>Initial Targeted Balance at Poolcut</b>	6,000,000.00 AUD	1.20%
<b>Current Targeted Balance</b>	6,000,000.00 AUD	1.20%
<b>Balance as of the Beginning of the Period</b>	6,000,000.00 AUD	1.20%
Payment from CCA	- AUD	0.00%
Payment to CCA	- AUD	0.00%
<b>Balance as of the End of the Period</b>	6,000,000.00 AUD	1.20%

## Calculation of Credit Enhancement

Initially, Driver Australia One's Credit Enhancement consists of the respective Note Issue in comparison to the Discounted Principal Balance as of Poolcut, minus any Senior Debt Issuance. This 'Overcollateralisation' (i.e. Credit Enhancement excluding the Cash Collateral Account) is specific for each Note Series and increases with its seniority.

Subsequently, the 'Overcollateralisation' is calculated (as an Overcollateralisation Percentage) on a monthly basis, all on end of month figures. Considering the seniority of the respective Note Series, redemption is made until a Target Overcollateralisation Percentage has been reached. All remaining funds will be used to perform payments in the more junior positions of the Order of Priority.

The Target OC percentages for each Note Class are determined subject to 3 items:

- They will increase in 2 steps in case the Cumulative Net Loss Ratio exceeds a certain level and Credit Enhancement Increase Condition is met.
- They will increase to 100% if the Aggregate Discounted Principal Balance falls below 10.00% of the Aggregate Discounted Principal Balance at Cut-Off Date (without a Clean-Up Call being exercised).
- A Foreclosure Event causes the transaction to switch into sequential payment mode, in which case the OC Percentages will not determine the maximum redemption amount and may be exceeded.

In addition, there is the 'General Cash Reserve', in the form of a Cash Collateral Account, which is in principle to the benefit of all Tranches over the entire lifetime of the transaction.

## Swap Fixing / Waterfall

Amortising Interest Rate Swap	Class A	Class B
Initial Principal	433,000,000.00 AUD	26,000,000.00 AUD
Underlying Principal for Reporting Period	97,657,088.00 AUD	13,950,983.80 AUD
Paying Leg	Fixed Interest Rate	Fixed Interest Rate
Receiving Leg	Floating Interest Rate	Floating Interest Rate
Net Swap Payments - Net Swap Receipts	87,078.69 AUD	14,770.52 AUD

Available Distribution Amount Calculation	Payment to waterfall position	Remaining Amount
1) i) Available Collections Amount from Contracts	10,516,969.50 AUD	10,516,969.50 AUD
1) ii) Available Collections - Interest on Trust Account	31,776.92 AUD	10,548,746.42 AUD
2) Drawings From Cash Collateral Account	- AUD	10,548,746.42 AUD
3) i) Swap Receipts - Class A	- AUD	10,548,746.42 AUD
3) ii) Swap Receipts - Class B	- AUD	10,548,746.42 AUD
4) Damages and Indemnity Payments to Issuer	- AUD	10,548,746.42 AUD
5) Other Reimbursement Amounts	36,726.63 AUD	10,585,473.05 AUD
Remaining Rounding Amount (M-1)	25.21 AUD	10,585,498.26 AUD

Waterfall	Payment to waterfall position	Remaining Amount
Available Distribution Amount	- AUD	10,585,498.26 AUD
1) Trust Beneficiary \$1	(1.00 AUD)	10,585,497.26 AUD
2) Taxes	- AUD	10,585,497.26 AUD
3) Fees, Costs & Charges - Issuer and Security Trustee	(2,312.56 AUD)	10,583,184.70 AUD
4) Monthly Servicer Fee, Unitholder Costs, Trust and Sub-Trust Manager Fees	(139,311.75 AUD)	10,443,872.95 AUD
5. a) Net Swap Payments - Class A Notes	(87,078.69 AUD)	10,356,794.26 AUD
5. b) Net Swap Payments - Class B Notes	(14,770.52 AUD)	10,342,023.74 AUD
6. a) Interest accrued in prev. month - Class A	(216,879.00 AUD)	10,125,144.74 AUD
6. b) Interest Shortfalls from prior months - Class A	- AUD	10,125,144.74 AUD
7. a) Interest accrued in prev. month - Class B	(41,149.67 AUD)	10,083,995.07 AUD
7. b) Interest Shortfalls from prior months - Class B	- AUD	10,083,995.07 AUD
8) Payment to Cash Collateral Account	- AUD	10,083,995.07 AUD
9) Principal Payment - Class A	(6,914,230.60 AUD)	3,169,764.47 AUD
10) Principal Payment - Class B	(987,724.40 AUD)	2,182,040.07 AUD
Remaining Rounding Amount (Current Period)	(9.36 AUD)	2,182,030.71 AUD
11) Penalties, Costs, Expenses, Damages, Losses or Liabilities	- AUD	2,182,030.71 AUD
12) Other Payment to Swap Counterparties	- AUD	2,182,030.71 AUD
13) Subordinated Loan Accrued and Unpaid Interest	(75,684.39 AUD)	2,106,346.32 AUD
14) Subordinated Loan Principal	(2,106,346.32 AUD)	- AUD
15) Collateral Loan Accrued and Unpaid Interest	- AUD	- AUD
16) Collateral Loan Principal	- AUD	- AUD
17) Issuer Subordinated Notes Repayment to VWFS	- AUD	- AUD
18) Final Service Fee to VWFS	- AUD	- AUD

## CRD Retention / Retention of Net Economic Interest

### Retention Amount at Poolcut

Type of Asset	Number of Contracts	Percentage of Contracts	Outstanding Nominal Balance	Percentage of Nominal Balance
Portfolio sold to SPV	16,499	93.10%	547,808,908.75 AUD	93.00%
Retention of VWFSa	1,223	6.90%	41,231,367.34 AUD	7.00%
<b>Total</b>	<b>17,722</b>	<b>100.00%</b>	<b>589,040,276.09 AUD</b>	<b>100.00%</b>

Retention Amounts		
Minimum Retention	29,452,013.80 AUD	5.00%
Actual Retention	41,231,367.34 AUD	7.00%

### Retention Amount End of Reporting Period

Type of Asset	Number of Contracts	Percentage of Contracts	Outstanding Nominal Balance	Percentage of Nominal Balance
Portfolio sold to SPV	7,200	93.22%	137,304,367.37 AUD	93.11%
Retention of VWFSa	524	6.78%	10,156,234.63 AUD	6.89%
<b>Total</b>	<b>7,724</b>	<b>100.00%</b>	<b>147,460,602.00 AUD</b>	<b>100.00%</b>

Retention Amounts		
Minimum Retention	7,226,545.65 AUD	5.00%
Actual Retention	10,156,234.63 AUD	6.89%

In its capacity as originator and original lender, VWFSa complies with the retention requirements of a material net economic interest in accordance with § 122a CRD.

By adhering to option c) of the direction, VWFSa will keep the exposures designated for retention on its balance sheet on an ongoing basis.

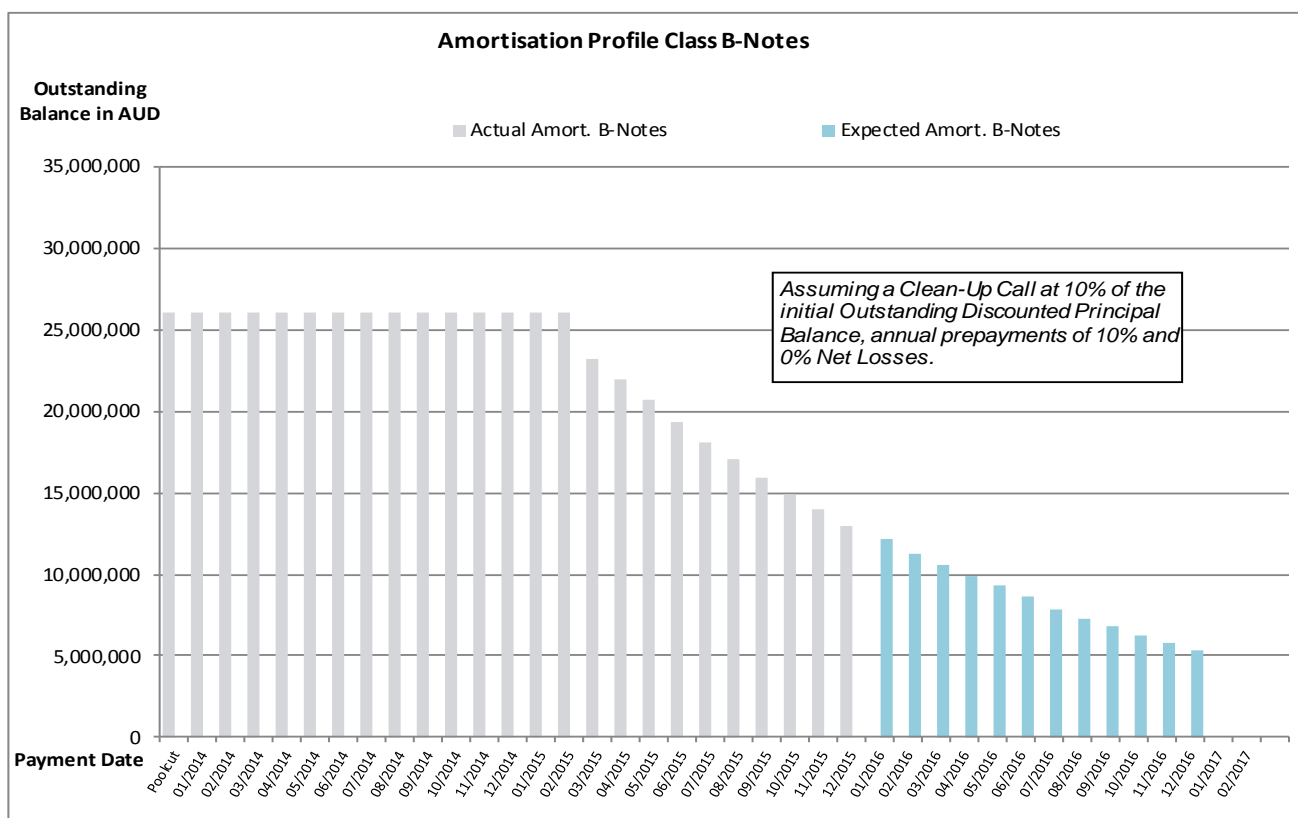
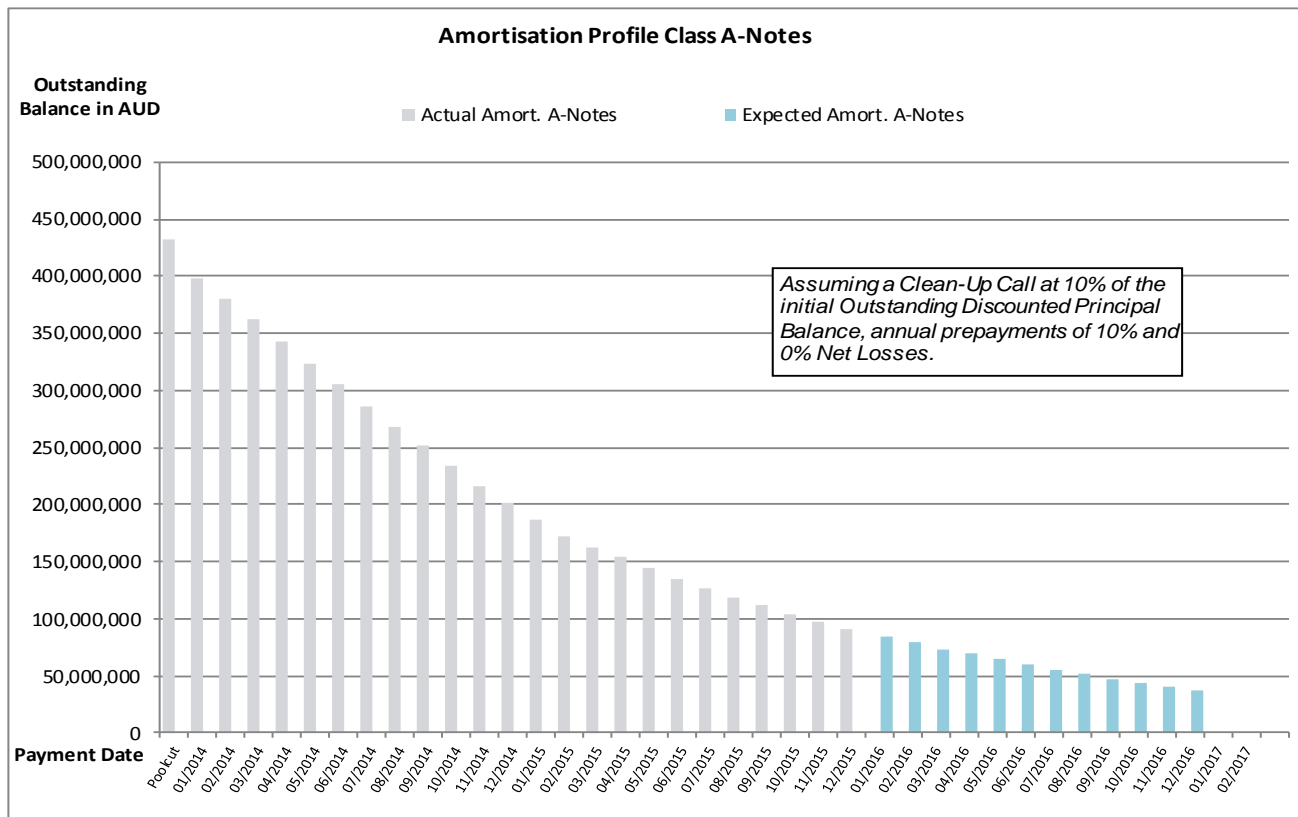
The latest end of month level of retention will be published on a monthly basis within the Investor Report.

## Amortisation Profile I

Note Class	Class A		Class B	
WAL	At Closing: 1.31 yrs	At Closing: 1.31 yrs	At Closing: 2.28 yrs	At Closing: 2.28 yrs
Payment Date	Actual Note Balance	Forecasted Note Balance	Actual Note Balance	Forecasted Note Balance
Poolcut	433,000,000.00 AUD	- AUD	26,000,000.00 AUD	- AUD
01/2014	397,736,090.30 AUD	- AUD	26,000,000.00 AUD	- AUD
02/2014	380,246,960.50 AUD	- AUD	26,000,000.00 AUD	- AUD
03/2014	361,652,165.20 AUD	- AUD	26,000,000.00 AUD	- AUD
04/2014	342,480,613.90 AUD	- AUD	26,000,000.00 AUD	- AUD
05/2014	323,990,821.10 AUD	- AUD	26,000,000.00 AUD	- AUD
06/2014	305,358,571.30 AUD	- AUD	26,000,000.00 AUD	- AUD
07/2014	285,891,843.90 AUD	- AUD	26,000,000.00 AUD	- AUD
08/2014	267,389,364.20 AUD	- AUD	26,000,000.00 AUD	- AUD
09/2014	251,132,422.50 AUD	- AUD	26,000,000.00 AUD	- AUD
10/2014	233,920,759.10 AUD	- AUD	26,000,000.00 AUD	- AUD
11/2014	216,546,893.90 AUD	- AUD	26,000,000.00 AUD	- AUD
12/2014	201,678,150.20 AUD	- AUD	26,000,000.00 AUD	- AUD
01/2015	186,188,614.40 AUD	- AUD	26,000,000.00 AUD	- AUD
02/2015	172,089,571.50 AUD	- AUD	26,000,000.00 AUD	- AUD
03/2015	162,720,014.40 AUD	- AUD	23,245,708.20 AUD	- AUD
04/2015	153,448,575.10 AUD	- AUD	21,921,203.20 AUD	- AUD
05/2015	144,970,002.10 AUD	- AUD	20,709,959.40 AUD	- AUD
06/2015	135,421,009.80 AUD	- AUD	19,345,827.80 AUD	- AUD
07/2015	126,743,689.80 AUD	- AUD	18,106,210.20 AUD	- AUD
08/2015	119,047,764.30 AUD	- AUD	17,006,795.00 AUD	- AUD
09/2015	111,590,205.30 AUD	- AUD	15,941,439.80 AUD	- AUD
10/2015	104,281,165.30 AUD	- AUD	14,897,282.40 AUD	- AUD
11/2015	97,657,088.00 AUD	- AUD	13,950,983.80 AUD	- AUD
12/2015	90,742,857.40 AUD	- AUD	12,963,259.40 AUD	- AUD
01/2016	-	84,764,852.19 AUD	-	12,109,264.59 AUD
02/2016	-	78,667,429.05 AUD	-	11,238,204.15 AUD
03/2016	-	73,599,699.48 AUD	-	10,514,242.78 AUD
04/2016	-	69,048,839.35 AUD	-	9,864,119.91 AUD
05/2016	-	64,909,391.29 AUD	-	9,272,770.18 AUD
06/2016	-	60,164,823.18 AUD	-	8,594,974.74 AUD
07/2016	-	55,247,615.37 AUD	-	7,892,516.49 AUD
08/2016	-	51,232,881.41 AUD	-	7,318,983.06 AUD
09/2016	-	47,495,425.82 AUD	-	6,785,060.84 AUD
10/2016	-	43,982,968.14 AUD	-	6,283,281.16 AUD
11/2016	-	40,463,498.38 AUD	-	5,780,499.77 AUD
12/2016	-	37,012,172.81 AUD	-	5,287,453.25 AUD
01/2017	-	- AUD	-	- AUD
02/2017	-	- AUD	-	- AUD

\*Based on the following assumptions: CPR of 10%, Net Losses of 0% and Clean Up Call at 10% of the original outstanding portfolio

## Amortisation Profile II



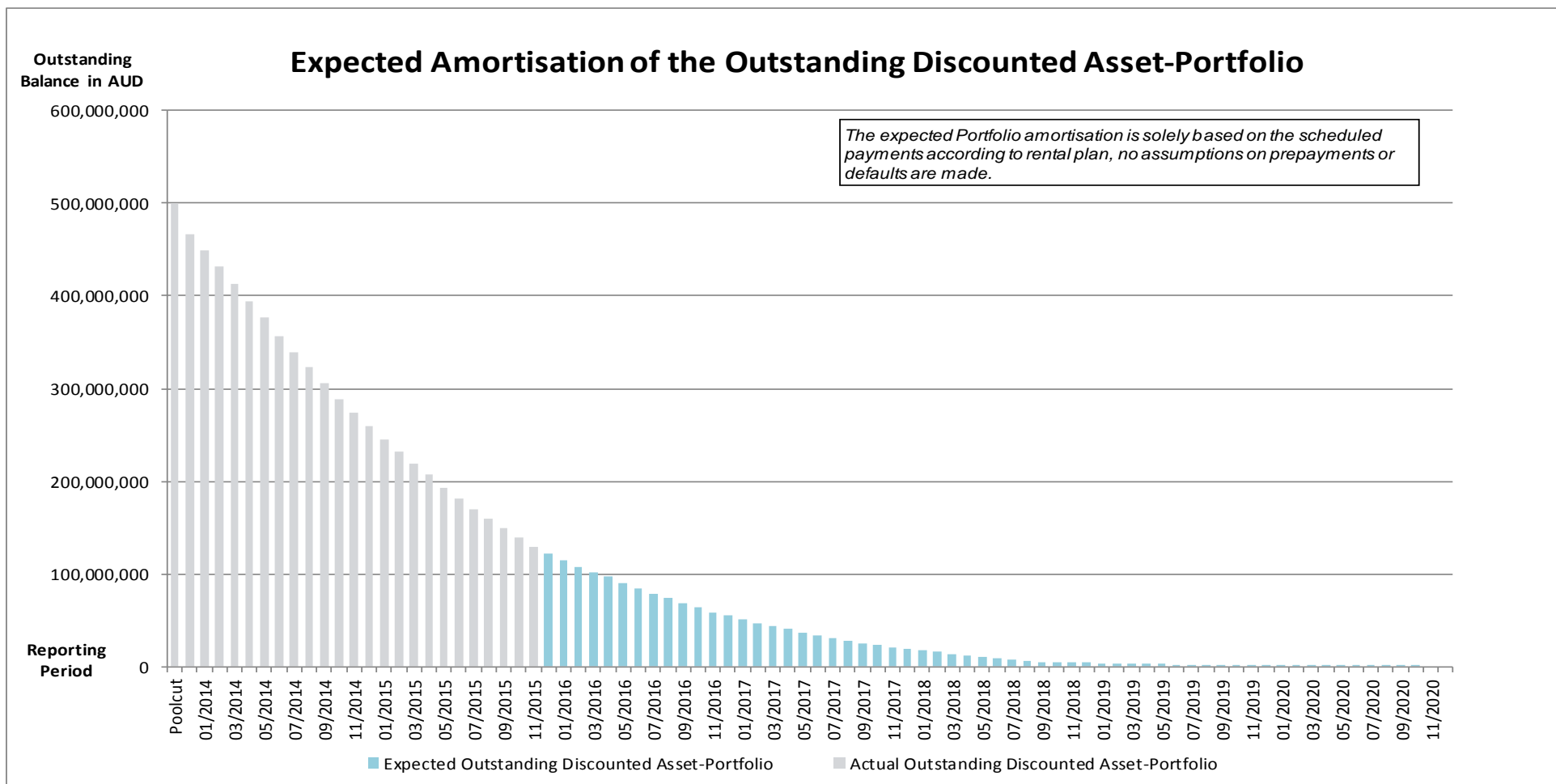
## Run Out Schedule I

End of Collection Period	Interest	Principal	Nominal Instalments
arrears	24,792.53 AUD	1,243,420.76 AUD	1,268,213.29 AUD
12/2015	537,169.07 AUD	6,228,696.70 AUD	6,765,865.77 AUD
01/2016	518,471.34 AUD	7,787,617.22 AUD	8,306,088.56 AUD
02/2016	489,595.37 AUD	6,424,219.22 AUD	6,913,814.59 AUD
03/2016	463,299.17 AUD	5,781,642.61 AUD	6,244,941.78 AUD
04/2016	439,429.46 AUD	5,277,903.07 AUD	5,717,332.53 AUD
05/2016	417,085.17 AUD	6,290,154.95 AUD	6,707,240.12 AUD
06/2016	390,496.03 AUD	6,670,893.43 AUD	7,061,389.46 AUD
07/2016	361,800.99 AUD	5,412,534.72 AUD	5,774,335.71 AUD
08/2016	338,576.55 AUD	5,085,842.00 AUD	5,424,418.55 AUD
09/2016	316,587.71 AUD	4,830,726.27 AUD	5,147,313.98 AUD
10/2016	295,937.29 AUD	4,932,671.30 AUD	5,228,608.59 AUD
11/2016	274,557.48 AUD	4,916,840.34 AUD	5,191,397.82 AUD
12/2016	253,621.06 AUD	4,072,754.75 AUD	4,326,375.81 AUD
01/2017	236,056.13 AUD	4,293,791.13 AUD	4,529,847.26 AUD
02/2017	217,490.40 AUD	3,635,803.14 AUD	3,853,293.54 AUD
03/2017	201,821.24 AUD	3,731,819.53 AUD	3,933,640.77 AUD
04/2017	185,673.04 AUD	2,649,013.40 AUD	2,834,686.44 AUD
05/2017	174,291.04 AUD	3,235,127.35 AUD	3,409,418.39 AUD
06/2017	160,279.03 AUD	3,824,652.09 AUD	3,984,931.12 AUD
07/2017	143,772.73 AUD	3,161,115.25 AUD	3,304,887.98 AUD
08/2017	130,119.54 AUD	2,979,119.30 AUD	3,109,238.84 AUD
09/2017	117,281.97 AUD	2,149,672.75 AUD	2,266,954.72 AUD
10/2017	108,015.33 AUD	2,144,093.96 AUD	2,252,109.29 AUD
11/2017	98,725.15 AUD	1,894,944.21 AUD	1,993,669.36 AUD
12/2017	90,688.80 AUD	1,777,243.32 AUD	1,867,932.12 AUD
01/2018	82,947.13 AUD	1,918,113.43 AUD	2,001,060.56 AUD
02/2018	74,743.40 AUD	1,654,876.74 AUD	1,729,620.14 AUD
03/2018	67,640.32 AUD	1,985,802.23 AUD	2,053,442.55 AUD
04/2018	59,072.11 AUD	1,521,842.78 AUD	1,580,914.89 AUD
05/2018	52,481.69 AUD	1,536,156.95 AUD	1,588,638.64 AUD
06/2018	45,797.35 AUD	1,617,299.08 AUD	1,663,096.43 AUD
07/2018	38,752.41 AUD	1,631,491.60 AUD	1,670,244.01 AUD
08/2018	31,694.01 AUD	1,637,617.05 AUD	1,669,311.06 AUD
09/2018	24,613.92 AUD	377,331.06 AUD	401,944.98 AUD
10/2018	22,988.23 AUD	397,177.67 AUD	420,165.90 AUD
11/2018	21,301.26 AUD	358,371.80 AUD	379,673.06 AUD
12/2018	19,740.29 AUD	350,243.88 AUD	369,984.17 AUD
01/2019	18,214.72 AUD	343,036.67 AUD	361,251.39 AUD
02/2019	16,720.37 AUD	333,607.97 AUD	350,328.34 AUD
03/2019	15,267.11 AUD	322,430.04 AUD	337,697.15 AUD
04/2019	13,862.66 AUD	312,108.66 AUD	325,971.32 AUD
05/2019	12,503.14 AUD	303,704.68 AUD	316,207.82 AUD
06/2019	11,231.88 AUD	293,568.40 AUD	304,800.28 AUD
07/2019	10,014.51 AUD	277,571.83 AUD	287,586.34 AUD
08/2019	8,805.46 AUD	265,246.96 AUD	274,052.42 AUD
09/2019	7,678.39 AUD	250,377.51 AUD	258,055.90 AUD
10/2019	6,587.90 AUD	236,371.14 AUD	242,959.04 AUD
11/2019	5,558.14 AUD	216,881.28 AUD	222,439.42 AUD
12/2019	4,613.49 AUD	195,854.74 AUD	200,468.23 AUD

01/2020	3,760.27 AUD	174,087.52 AUD	177,847.79 AUD
02/2020	3,002.04 AUD	155,039.44 AUD	158,041.48 AUD
03/2020	2,326.66 AUD	141,595.07 AUD	143,921.73 AUD
04/2020	1,709.86 AUD	122,163.73 AUD	123,873.59 AUD
05/2020	1,177.64 AUD	107,874.06 AUD	109,051.70 AUD
06/2020	707.79 AUD	76,285.87 AUD	76,993.66 AUD
07/2020	375.49 AUD	48,647.47 AUD	49,022.96 AUD
08/2020	163.57 AUD	32,476.29 AUD	32,639.86 AUD
09/2020	22.11 AUD	2,405.60 AUD	2,427.71 AUD
10/2020	11.64 AUD	1,853.32 AUD	1,864.96 AUD
11/2020	3.56 AUD	817.94 AUD	821.50 AUD
<b>Total</b>	<b>7,671,724.14 AUD</b>	<b>129,632,643.23 AUD</b>	<b>137,304,367.37 AUD</b>



## Run Out Schedule II



## Outstanding Contracts I - Overview

Total Portfolio as of Poolcut Date			Product Type					
			Hire Purchase		Chattel Mortgage		Consumer Loan	
Contract Status Development	Number of Contracts	Outstanding Discounted Balance	Number of Contracts	Outstanding Discounted Balance	Number of Contracts	Outstanding Discounted Balance	Number of Contracts	Outstanding Discounted Balance
Normal	16,499	500,000,075.89 AUD	2,970	92,130,371.43 AUD	5,094	151,176,375.85 AUD	8,435	256,693,328.61 AUD
In Advance	-	- AUD	-	- AUD	-	- AUD	-	- AUD
In Arrears	-	- AUD	-	- AUD	-	- AUD	-	- AUD
Paid out/Matured	-	- AUD	-	- AUD	-	- AUD	-	- AUD
Early Payout	-	- AUD	-	- AUD	-	- AUD	-	- AUD
Gross Salvage	-	- AUD	-	- AUD	-	- AUD	-	- AUD
Net Salvage	-	- AUD	-	- AUD	-	- AUD	-	- AUD
<b>Total</b>	<b>16,499</b>	<b>500,000,075.89 AUD</b>	<b>2,970</b>	<b>92,130,371.43 AUD</b>	<b>5,094</b>	<b>151,176,375.85 AUD</b>	<b>8,435</b>	<b>256,693,328.61 AUD</b>

Total Portfolio as of Previous Month			Product Type					
			Hire Purchase		Chattel Mortgage		Consumer Loan	
Contract Status Development	Number of Contracts	Outstanding Discounted Balance	Number of Contracts	Outstanding Discounted Balance	Number of Contracts	Outstanding Discounted Balance	Number of Contracts	Outstanding Discounted Balance
Normal	7,028	130,479,497.84 AUD	691	12,264,808.52 AUD	1,631	31,998,444.75 AUD	4,706	86,216,244.57 AUD
In Advance	322	4,939,612.21 AUD	20	342,199.04 AUD	48	688,482.03 AUD	254	3,908,931.14 AUD
In Arrears	190	3,972,397.22 AUD	33	829,897.82 AUD	70	1,297,621.50 AUD	87	1,844,877.90 AUD
Paid out/Matured	2,836	- AUD	719	- AUD	1,157	- AUD	960	- AUD
Early Payout	6,049	- AUD	1,493	- AUD	2,150	- AUD	2,406	- AUD
Gross Salvage	3	118,582.46 AUD	1	62,953.13 AUD	1	21,349.87 AUD	1	34,279.46 AUD
Net Salvage	71	1,002,807.79 AUD	13	204,487.80 AUD	37	483,782.36 AUD	21	314,537.63 AUD
<b>Total</b>	<b>16,499</b>	<b>140,512,897.52 AUD</b>	<b>2,970</b>	<b>13,704,346.31 AUD</b>	<b>5,094</b>	<b>34,489,680.51 AUD</b>	<b>8,435</b>	<b>92,318,870.70 AUD</b>

Total Portfolio as of Current Reporting Period			Product Type					
			Hire Purchase		Chattel Mortgage		Consumer Loan	
Contract Status Development	Number of Contracts	Outstanding Discounted Balance	Number of Contracts	Outstanding Discounted Balance	Number of Contracts	Outstanding Discounted Balance	Number of Contracts	Outstanding Discounted Balance
Normal	6,682	120,470,287.47 AUD	622	10,331,903.05 AUD	1,526	29,298,506.87 AUD	4,534	80,839,877.55 AUD
In Advance	307	4,731,526.04 AUD	16	317,015.88 AUD	40	595,234.38 AUD	251	3,819,275.78 AUD
In Arrears	210	4,367,876.59 AUD	39	927,211.48 AUD	79	1,454,962.39 AUD	92	1,985,702.72 AUD
Paid out/Matured	2,962	- AUD	741	- AUD	1,201	- AUD	1,020	- AUD
Early Payout	6,264	- AUD	1,538	- AUD	2,211	- AUD	2,515	- AUD
Gross Salvage	1	62,953.13 AUD	1	62,953.13 AUD	-	- AUD	-	- AUD
Net Salvage	73	1,018,174.29 AUD	13	204,487.80 AUD	37	483,782.36 AUD	23	329,904.13 AUD
<b>Total</b>	<b>16,499</b>	<b>130,650,817.52 AUD</b>	<b>2,970</b>	<b>11,843,571.34 AUD</b>	<b>5,094</b>	<b>31,832,486.00 AUD</b>	<b>8,435</b>	<b>86,974,760.18 AUD</b>

## Outstanding Contracts I - Overview

Total Portfolio as of Poolcut Date			Balloon				Type of Car			
Contract Status Development	Number of Contracts	Outstanding Discounted Balance	Balloon		No Balloon		New Vehicle		Used Vehicle	
			Number of Contracts	Outstanding Discounted Balance	Number of Contracts	Outstanding Discounted Balance	Number of Contracts	Outstanding Discounted Balance	Number of Contracts	Outstanding Discounted Balance
Normal	16,499	500,000,075.89 AUD	8,184	302,414,678.04 AUD	8,315	197,585,397.85 AUD	13,968	438,595,554.40 AUD	2,531	61,404,521.49 AUD
In Advance	-	- AUD	-	- AUD	-	- AUD	-	- AUD	-	- AUD
In Arrears	-	- AUD	-	- AUD	-	- AUD	-	- AUD	-	- AUD
Paid out/Matured	-	- AUD	-	- AUD	-	- AUD	-	- AUD	-	- AUD
Early Payout	-	- AUD	-	- AUD	-	- AUD	-	- AUD	-	- AUD
Gross Salvage	-	- AUD	-	- AUD	-	- AUD	-	- AUD	-	- AUD
Net Salvage	-	- AUD	-	- AUD	-	- AUD	-	- AUD	-	- AUD
<b>Total</b>	<b>16,499</b>	<b>500,000,075.89 AUD</b>	<b>8,184</b>	<b>302,414,678.04 AUD</b>	<b>8,315</b>	<b>197,585,397.85 AUD</b>	<b>13,968</b>	<b>438,595,554.40 AUD</b>	<b>2,531</b>	<b>61,404,521.49 AUD</b>

Total Portfolio as of Previous Month			Balloon				Type of Car			
Contract Status Development	Number of Contracts	Outstanding Discounted Balance	Balloon		No Balloon		New Vehicle		Used Vehicle	
			Number of Contracts	Outstanding Discounted Balance	Number of Contracts	Outstanding Discounted Balance	Number of Contracts	Outstanding Discounted Balance	Number of Contracts	Outstanding Discounted Balance
Normal	7,028	130,479,497.84 AUD	3,064	77,098,324.73 AUD	3,964	53,381,173.11 AUD	6,080	116,310,762.26 AUD	948	14,168,735.58 AUD
In Advance	322	4,939,612.21 AUD	104	2,080,558.08 AUD	218	2,859,054.13 AUD	260	4,154,272.79 AUD	62	785,339.42 AUD
In Arrears	190	3,972,397.22 AUD	121	2,842,257.59 AUD	69	1,130,139.63 AUD	159	3,492,835.68 AUD	31	479,561.54 AUD
Paid out/Matured	2,836	- AUD	1,556	- AUD	1,280	- AUD	2,351	- AUD	485	- AUD
Early Payout	6,049	- AUD	3,296	- AUD	2,753	- AUD	5,065	- AUD	984	- AUD
Gross Salvage	3	118,582.46 AUD	2	84,303.00 AUD	1	34,279.46 AUD	3	118,582.46 AUD	-	- AUD
Net Salvage	71	1,002,807.79 AUD	41	651,040.94 AUD	30	351,766.85 AUD	50	761,264.59 AUD	21	241,543.20 AUD
<b>Total</b>	<b>16,499</b>	<b>140,512,897.52 AUD</b>	<b>8,184</b>	<b>82,756,484.34 AUD</b>	<b>8,315</b>	<b>57,756,413.18 AUD</b>	<b>13,968</b>	<b>124,837,717.78 AUD</b>	<b>2,531</b>	<b>15,675,179.74 AUD</b>

Total Portfolio as of Current Reporting Period			Balloon				Type of Car			
Contract Status Development	Number of Contracts	Outstanding Discounted Balance	Balloon		No Balloon		New Vehicle		Used Vehicle	
			Number of Contracts	Outstanding Discounted Balance	Number of Contracts	Outstanding Discounted Balance	Number of Contracts	Outstanding Discounted Balance	Number of Contracts	Outstanding Discounted Balance
Normal	6,682	120,470,287.47 AUD	2,872	70,854,171.52 AUD	3,810	49,616,115.95 AUD	5,782	107,364,695.81 AUD	900	13,105,591.66 AUD
In Advance	307	4,731,526.04 AUD	98	2,027,853.28 AUD	209	2,703,672.76 AUD	250	4,034,528.94 AUD	57	696,997.10 AUD
In Arrears	210	4,367,876.59 AUD	138	3,247,223.43 AUD	72	1,120,653.16 AUD	176	3,852,416.69 AUD	34	515,459.90 AUD
Paid out/Matured	2,962	- AUD	1,619	- AUD	1,343	- AUD	2,462	- AUD	500	- AUD
Early Payout	6,264	- AUD	3,415	- AUD	2,849	- AUD	5,246	- AUD	1,018	- AUD
Gross Salvage	1	62,953.13 AUD	1	62,953.13 AUD	-	- AUD	1	62,953.13 AUD	-	- AUD
Net Salvage	73	1,018,174.29 AUD	41	651,040.94 AUD	32	367,133.35 AUD	51	776,140.53 AUD	22	242,033.76 AUD
<b>Total</b>	<b>16,499</b>	<b>130,650,817.52 AUD</b>	<b>8,184</b>	<b>76,843,242.30 AUD</b>	<b>8,315</b>	<b>53,807,575.22 AUD</b>	<b>13,968</b>	<b>116,090,735.10 AUD</b>	<b>2,531</b>	<b>14,560,082.42 AUD</b>

## Outstanding Contracts II - Collections

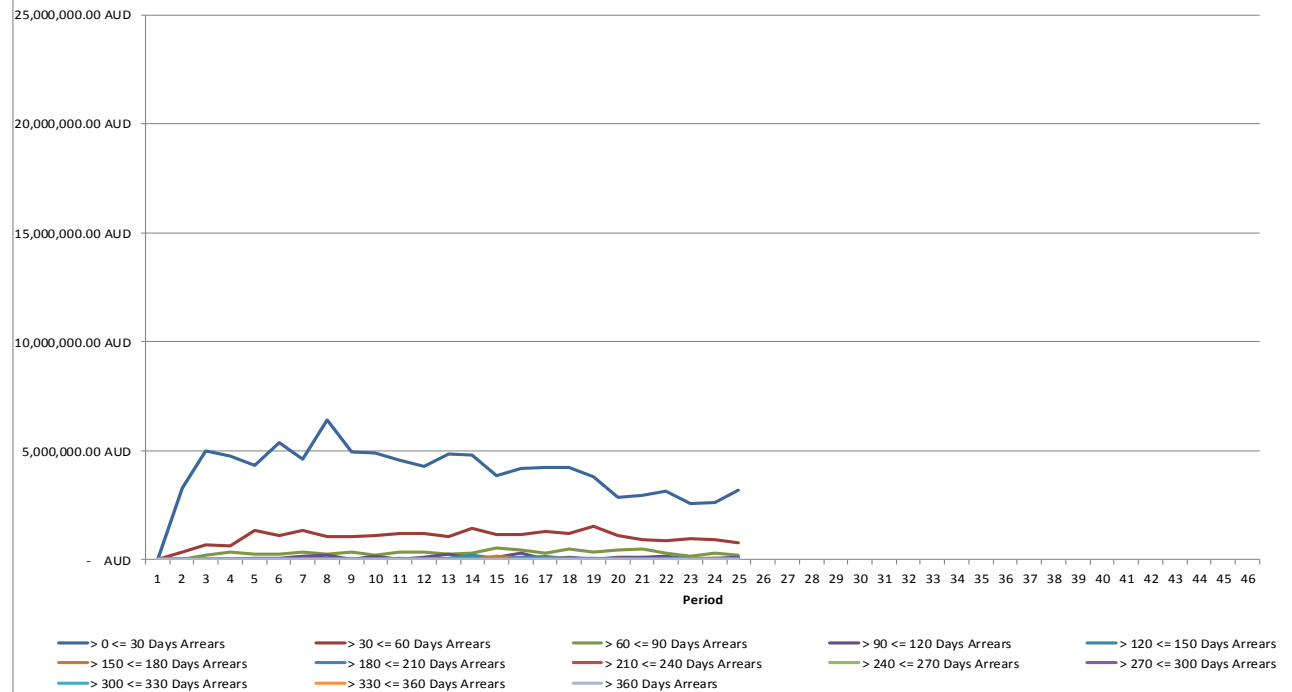
Collections This Reporting Month by Status	Change in Contract Statuses From Last Month	Number of Contracts This Month	Collections
Normal	(346)	6,682	5,317,955.89 AUD
In Advance	(15)	307	370,370.81 AUD
In Arrears	20	210	151,300.65 AUD
Paid out/Matured	126	2,962	934,575.69 AUD
Early Payout	215	6,264	3,712,694.10 AUD
Gross Salvage	(2)	1	- AUD
Net Salvage	2	73	30,072.36 AUD
<b>Total</b>	<b>-</b>	<b>16,499</b>	<b>10,516,969.50 AUD</b>

Development of Pool within Reporting Period	Number of Active Contracts	Total Number of Contracts	Collection Variations	Outstanding Nominal Balance
Beginning of Period	7,543	16,499		147,924,744.93 AUD
<b>Scheduled Collections For Contracts Active This Period</b>			<b>7,857,643.12 AUD</b>	<b>7,857,643.12 AUD</b>
Collections Variations From Normal Contracts This Period			48,172.54 AUD	
Collection Variations From Contracts Paying Out Early This Period			2,612,253.90 AUD	
Collection Variations From Contracts Paying Out/Maturing This Period			464,131.26 AUD	
Collection Variations from Contracts in Advance This Period			337,277.65 AUD	
Collection Variations from Contract In Arrears This Period			(935,762.65 AUD)	
Collection Variations from Contracts Going Into Gross Salvage This Period			(1,262.80 AUD)	
Collection Variations from Contracts Going Into Net Salvage This Period			27,179.26 AUD	
Other Variations From Scheduled Collections This Period			- AUD	
<i>Instalment Collection Variations</i>			2,551,989.16 AUD	2,551,989.16 AUD
Contract Fees Collected This Period			45,987.40 AUD	
Interest Compensation Collections This Period			61,349.82 AUD	
<i>Non Instalment Collection Variations</i>			107,337.22 AUD	
<b>Actual Collections For Contracts Active This Period</b>			<b>10,516,969.50 AUD</b>	
Number of Contracts Paid Out Early This Month	215			
Number of Contracts Paid Out/Matured This Month	126			
Number of Contracts Into Net Salvage This Month	2			
Repurchased Contracts	-	-		
Less Recoveries After Net Salvage				(4,636.36) AUD
Reduced Nominal Balance Due to Unpaid Rental At Net Salvage				16,143.73 AUD
Reduced Nominal Balance Due to Unpaid Rental At Early Payout				194,547.80 AUD
Reduced Nominal Balance Due to Other				4,690.11 AUD
<b>End of Period</b>	<b>7,200</b>	<b>16,499</b>		<b>137,304,367.37 AUD</b>

Arrears Contracts

Total Portfolio					Product Type					
Days in Arrears	Number of Contracts	Number of Contracts (%)	Outstanding Discounted Balance	Outstanding Discounted Balance (%)	Hire Purchase		Chattel Mortgage		Consumer Loan	
					Number of Contracts	Outstanding Discounted Balance	Number of Contracts	Outstanding Discounted Balance	Number of Contracts	Outstanding Discounted Balance
> 0 <= 30	156	2.17%	3,188,003.36 AUD	2.46%	30	710,918.55 AUD	56	1,014,511.46 AUD	70	1,462,573.35 AUD
> 30 <= 60	36	0.50%	766,759.39 AUD	0.59%	7	168,907.25 AUD	14	289,961.58 AUD	15	307,890.56 AUD
> 60 <= 90	8	0.11%	190,095.48 AUD	0.15%	2	47,385.68 AUD	4	86,552.83 AUD	2	56,156.97 AUD
> 90 <= 120	5	0.07%	130,502.06 AUD	0.10%	-	- AUD	3	35,114.12 AUD	2	95,387.94 AUD
> 120 <= 150	3	0.04%	51,097.78 AUD	0.04%	-	- AUD	2	28,822.40 AUD	1	22,275.38 AUD
> 150 <= 180	1	0.01%	17,565.03 AUD	0.01%	-	- AUD	-	- AUD	1	17,565.03 AUD
> 180 <= 210	1	0.01%	62,953.13 AUD	0.05%	1	62,953.13 AUD	-	- AUD	-	- AUD
> 210 <= 240	-	0.00%	- AUD	0.00%	-	- AUD	-	- AUD	-	- AUD
> 240 <= 270	-	0.00%	- AUD	0.00%	-	- AUD	-	- AUD	-	- AUD
> 270 <= 300	1	0.01%	23,853.49 AUD	0.02%	-	- AUD	-	- AUD	1	23,853.49 AUD
> 300 <= 330	-	0.00%	- AUD	0.00%	-	- AUD	-	- AUD	-	- AUD
> 330 <= 360	-	0.00%	- AUD	0.00%	-	- AUD	-	- AUD	-	- AUD
> 360	-	0.00%	- AUD	0.00%	-	- AUD	-	- AUD	-	- AUD
<b>Total</b>	<b>211</b>	<b>2.9306%</b>	<b>4,430,829.72 AUD</b>	<b>3.42%</b>	<b>40</b>	<b>990,164.61 AUD</b>	<b>79</b>	<b>1,454,962.39 AUD</b>	<b>92</b>	<b>1,985,702.72 AUD</b>

Arrears Contracts - Total Outstanding Discounted Principal Balance



Arrears Contracts

Total Portfolio					Balloon				Vehicle Status			
Days in Arrears	Number of Contracts	Number of Contracts (%)	Outstanding Discounted Balance	Outstanding Discounted Balance (%)	Balloon		No Balloon		New		Used	
					Number of Contracts	Outstanding Discounted Balance	Number of Contracts	Outstanding Discounted Balance	Number of Contracts	Outstanding Discounted Balance	Number of Contracts	Outstanding Discounted Balance
> 0 <= 30	156	2.17%	3,188,003.36 AUD	2.46%	101	2,340,669.68 AUD	55	847,333.68 AUD	134	2,886,856.61 AUD	22	301,146.75 AUD
> 30 <= 60	36	0.50%	766,759.39 AUD	0.59%	22	557,502.05 AUD	14	209,257.34 AUD	27	594,652.87 AUD	9	172,106.52 AUD
> 60 <= 90	8	0.11%	190,095.48 AUD	0.15%	8	190,095.48 AUD	-	- AUD	8	190,095.48 AUD	-	- AUD
> 90 <= 120	5	0.07%	130,502.06 AUD	0.10%	3	84,004.95 AUD	2	46,497.11 AUD	4	128,380.09 AUD	1	2,121.97 AUD
> 120 <= 150	3	0.04%	51,097.78 AUD	0.04%	3	51,097.78 AUD	-	- AUD	1	11,013.12 AUD	2	40,084.66 AUD
> 150 <= 180	1	0.01%	17,565.03 AUD	0.01%	-	- AUD	1	17,565.03 AUD	1	17,565.03 AUD	-	- AUD
> 180 <= 210	1	0.01%	62,953.13 AUD	0.05%	1	62,953.13 AUD	-	- AUD	1	62,953.13 AUD	-	- AUD
> 210 <= 240	-	0.00%	- AUD	0.00%	-	- AUD	-	- AUD	-	- AUD	-	- AUD
> 240 <= 270	-	0.00%	- AUD	0.00%	-	- AUD	-	- AUD	-	- AUD	-	- AUD
> 270 <= 300	1	0.01%	23,853.49 AUD	0.02%	1	23,853.49 AUD	-	- AUD	1	23,853.49 AUD	-	- AUD
> 300 <= 330	-	0.00%	- AUD	0.00%	-	- AUD	-	- AUD	-	- AUD	-	- AUD
> 330 <= 360	-	0.00%	- AUD	0.00%	-	- AUD	-	- AUD	-	- AUD	-	- AUD
> 360	-	0.00%	- AUD	0.00%	-	- AUD	-	- AUD	-	- AUD	-	- AUD
<b>Total</b>	<b>211</b>	<b>2.9306%</b>	<b>4,430,829.72 AUD</b>	<b>3.42%</b>	<b>139</b>	<b>3,310,176.56 AUD</b>	<b>72</b>	<b>1,120,653.16 AUD</b>	<b>177</b>	<b>3,915,369.82 AUD</b>	<b>34</b>	<b>515,459.90 AUD</b>

## Net Salvage Loss

Net Salvage Loss This Period			
Product Type	Type of Car	Number of Contracts	Net Salvage Loss
Hire Purchase	New	-	- AUD
	Used	-	- AUD
<b>Total Hire Purchase</b>		-	- AUD
Chattel Mortgage	New	-	- AUD
	Used	-	- AUD
<b>Total Chattel Mortgage</b>		-	- AUD
Consumer Loan	New	1	14,875.94 AUD
	Used	1	490.56 AUD
<b>Total Consumer Loan</b>		2	15,366.50 AUD
<b>Total</b>		2	15,366.50 AUD

<b>Cumulative Net Salvage Loss as of the End of the Monthly Period</b>	1,025,655.21 AUD
<b>Outstanding Discounted Principal Balance at Poolcut</b>	500,000,075.89 AUD
<b>Cumulative Net Loss Ratio</b>	0.20513%

Monthly Period	Per Period		Cumulative Net Salvage Loss	
	Number of Contracts	Net Salvage Loss	Number of Contracts	Net Salvage Loss
11/2013	-	- AUD	-	- AUD
12/2013	-	- AUD	-	- AUD
01/2014	2	26,704.78 AUD	2	26,704.78 AUD
02/2014	2	24,480.82 AUD	4	51,185.60 AUD
03/2014	-	- AUD	4	51,185.60 AUD
04/2014	1	31,527.23 AUD	5	82,712.83 AUD
05/2014	-	- AUD	5	82,712.83 AUD
06/2014	4	34,592.27 AUD	9	117,305.10 AUD
07/2014	7	158,398.34 AUD	16	275,703.44 AUD
08/2014	4	47,393.53 AUD	20	323,096.97 AUD
09/2014	3	65,097.10 AUD	23	388,194.07 AUD
10/2014	3	41,533.07 AUD	26	429,727.14 AUD
11/2014	2	15,613.93 AUD	28	445,341.07 AUD
12/2014	3	55,117.31 AUD	31	500,458.38 AUD
01/2015	4	37,710.46 AUD	35	538,168.84 AUD
02/2015	1	2,284.56 AUD	36	540,453.40 AUD
03/2015	9	133,879.12 AUD	45	674,332.52 AUD
04/2015	2	6,545.63 AUD	47	680,878.15 AUD
05/2015	8	156,826.49 AUD	55	837,704.64 AUD
06/2015	3	45,348.61 AUD	58	883,053.25 AUD
07/2015	5	60,536.87 AUD	63	943,590.12 AUD
08/2015	3	11,817.70 AUD	66	955,407.82 AUD
09/2015	3	28,990.22 AUD	69	984,398.04 AUD
10/2015	2	25,890.67 AUD	71	1,010,288.71 AUD
11/2015	2	15,366.50 AUD	73	1,025,655.21 AUD
12/2015	-	- AUD	-	- AUD
01/2016	-	- AUD	-	- AUD
02/2016	-	- AUD	-	- AUD
03/2016	-	- AUD	-	- AUD
04/2016	-	- AUD	-	- AUD
05/2016	-	- AUD	-	- AUD
06/2016	-	- AUD	-	- AUD
07/2016	-	- AUD	-	- AUD
08/2016	-	- AUD	-	- AUD
09/2016	-	- AUD	-	- AUD
10/2016	-	- AUD	-	- AUD
11/2016	-	- AUD	-	- AUD
12/2016	-	- AUD	-	- AUD
01/2017	-	- AUD	-	- AUD
02/2017	-	- AUD	-	- AUD
<b>Total</b>	<b>73</b>	<b>1,025,655.21 AUD</b>		

## Net Salvage After Recoveries

Net Salvaged Contracts						
Product Type	Vehicle Status	Number of Contracts	Gross Salvage Loss	Net Salvage Loss	Recoveries After Net Salvage	Net Salvage Loss After Recoveries
Hire Purchase	New	8	331,067.14 AUD	163,465.71 AUD	4,802.40 AUD	158,663.31 AUD
	Used	5	72,995.95 AUD	41,030.01 AUD	90.91 AUD	40,939.10 AUD
<b>Total Hire Purchase</b>		<b>13</b>	<b>404,063.09 AUD</b>	<b>204,495.72 AUD</b>	<b>4,893.31 AUD</b>	<b>199,602.41 AUD</b>
Chattel Mortgage	New	30	729,307.42 AUD	463,616.08 AUD	45,684.43 AUD	417,931.65 AUD
	Used	7	58,457.76 AUD	24,407.67 AUD	947.06 AUD	23,460.61 AUD
<b>Total Chattel Mortgage</b>		<b>37</b>	<b>787,765.18 AUD</b>	<b>488,023.75 AUD</b>	<b>46,631.49 AUD</b>	<b>441,392.26 AUD</b>
Consumer Loan	New	13	284,248.95 AUD	154,334.58 AUD	(443.85) AUD	154,778.43 AUD
	Used	10	263,813.73 AUD	178,801.16 AUD	48,514.32 AUD	130,286.84 AUD
<b>Total Consumer Loan</b>		<b>23</b>	<b>548,062.68 AUD</b>	<b>333,135.74 AUD</b>	<b>48,070.47 AUD</b>	<b>285,065.27 AUD</b>
<b>Total</b>		<b>73</b>	<b>1,739,890.95 AUD</b>	<b>1,025,655.21 AUD</b>	<b>99,595.27 AUD</b>	<b>926,059.94 AUD</b>



Pool Data I

Down Payments

Total Portfolio						Product Type					
						Hire Purchase		Chattel Mortgage		Consumer Loan	
Down Payment	Number of Contracts	Percentage of Contracts	Outstanding Discounted Balance	Percentage of Balance	Down Payment/ Purchase Price in %	Number of Contracts	Outstanding Discounted Balance	Number of Contracts	Outstanding Discounted Balance	Number of Contracts	Outstanding Discounted Balance
No Down Payment	2,079	28.88%	42,878,274.18 AUD	33.08%	0.00%	233	4,484,706.83 AUD	575	11,852,483.95 AUD	1,271	26,541,083.40 AUD
0.01 - 10,000.00	3,755	52.15%	63,343,217.07 AUD	48.86%	9.85%	294	4,754,149.99 AUD	756	13,249,072.82 AUD	2,705	45,339,994.26 AUD
10,000.01 - 20,000.00	933	12.96%	14,966,616.33 AUD	11.55%	29.90%	98	1,621,823.29 AUD	210	4,016,263.83 AUD	625	9,328,529.21 AUD
20,000.01 - 30,000.00	273	3.79%	4,923,664.58 AUD	3.80%	40.59%	28	414,230.14 AUD	60	1,031,192.98 AUD	185	3,478,241.46 AUD
30,000.01 - 40,000.00	96	1.33%	1,522,490.24 AUD	1.17%	49.60%	14	153,125.28 AUD	22	473,018.34 AUD	60	896,346.62 AUD
40,000.01 - 50,000.00	31	0.43%	714,132.43 AUD	0.55%	48.69%	8	147,150.64 AUD	11	196,701.71 AUD	12	370,280.08 AUD
50,000.01 - 60,000.00	19	0.26%	422,741.21 AUD	0.33%	59.45%	2	12,820.08 AUD	6	192,635.30 AUD	11	217,285.83 AUD
60,000.01 - 70,000.00	2	0.03%	16,759.41 AUD	0.01%	74.35%	-	- AUD	-	- AUD	2	16,759.41 AUD
70,000.01 - 80,000.00	5	0.07%	141,695.59 AUD	0.11%	63.75%	-	- AUD	4	139,351.56 AUD	1	2,344.03 AUD
80,000.01 - 90,000.00	2	0.03%	72,508.00 AUD	0.06%	58.02%	-	- AUD	-	- AUD	2	72,508.00 AUD
90,000.01 - 100,000.00	1	0.01%	70,170.89 AUD	0.05%	60.15%	-	- AUD	-	- AUD	1	70,170.89 AUD
100,000.01 - 110,000.00	2	0.03%	249,060.44 AUD	0.19%	48.91%	1	51,077.29 AUD	1	197,983.15 AUD	-	- AUD
110,000.01 - 120,000.00	2	0.03%	311,312.86 AUD	0.24%	36.33%	-	- AUD	-	- AUD	2	311,312.86 AUD
120,000.01 - 130,000.00	-	0.00%	- AUD	0.00%	0.00%	-	- AUD	-	- AUD	-	- AUD
130,000.01 - 140,000.00	-	0.00%	- AUD	0.00%	0.00%	-	- AUD	-	- AUD	-	- AUD
140,000.01 - 150,000.00	-	0.00%	- AUD	0.00%	0.00%	-	- AUD	-	- AUD	-	- AUD
> 150,000.00	-	0.00%	- AUD	0.00%	0.00%	-	- AUD	-	- AUD	-	- AUD
<b>Total</b>	<b>7,200</b>	<b>100.00%</b>	<b>129,632,643.23 AUD</b>	<b>100.00%</b>	<b>24.59%</b>	<b>678</b>	<b>11,639,083.54 AUD</b>	<b>1,645</b>	<b>31,348,703.64 AUD</b>	<b>4,877</b>	<b>86,644,856.05 AUD</b>

Statistics Down Payments	
Minimum Down Payment	- AUD
Maximum Down Payment	115,000.00 AUD
Weighted Average Down Payment (Customers that made a Down Payment)	8,913.38 AUD
Weighted Average Down Payment	5,965.13 AUD

Type of Payment

Total Portfolio				
Type of Payment	Number of Contracts	Percentage of Contracts	Outstanding Discounted Balance	Percentage of Balance
Direct Debit	7,055	97.99%	127,209,148.56 AUD	98.13%
Other	145	2.01%	2,423,494.67 AUD	1.87%
<b>Total</b>	<b>7,200</b>	<b>100.00%</b>	<b>129,632,643.23 AUD</b>	<b>100.00%</b>

Product Type					
Hire Purchase		Chattel Mortgage		Consumer Loan	
Number of Contracts	Outstanding Discounted Balance	Number of Contracts	Outstanding Discounted Balance	Number of Contracts	Outstanding Discounted Balance
654	11,177,758	1,597	30,486,295	4,804	85,545,096
24	461,326	48	862,408	73	1,099,760
<b>678</b>	<b>11,639,083.54 AUD</b>	<b>1,645</b>	<b>31,348,703.64 AUD</b>	<b>4,877</b>	<b>86,644,856.05 AUD</b>

Pool Data I

Down Payments

Total Portfolio						Balloon				Vehicle Status			
Down Payment	Number of Contracts	Percentage of Contracts	Outstanding Discounted Balance	Percentage of Balance	Down Payment/ Purchase Price in %	Balloon		No Balloon		New		Used	
						Number of Contracts	Outstanding Discounted Balance	Number of Contracts	Outstanding Discounted Balance	Number of Contracts	Outstanding Discounted Balance	Number of Contracts	Outstanding Discounted Balance
No Down Payment	2,079	28.88%	42,878,274.18 AUD	33.08%	0.00%	1,118	28,506,364.71 AUD	961	14,371,909.47 AUD	1,781	37,989,695.93 AUD	298	4,888,578.25 AUD
0.01 - 10,000.00	3,755	52.15%	63,343,217.07 AUD	48.86%	9.85%	1,470	33,138,399.97 AUD	2,285	30,204,817.10 AUD	3,199	55,952,993.24 AUD	556	7,390,223.83 AUD
10,000.01 - 20,000.00	933	12.96%	14,966,616.33 AUD	11.55%	29.90%	359	9,065,288.47 AUD	574	5,901,327.86 AUD	828	13,693,079.85 AUD	105	1,273,536.48 AUD
20,000.01 - 30,000.00	273	3.79%	4,923,664.58 AUD	3.80%	40.59%	96	2,905,926.50 AUD	177	2,017,738.08 AUD	250	4,511,488.31 AUD	23	412,176.27 AUD
30,000.01 - 40,000.00	96	1.33%	1,522,490.24 AUD	1.17%	49.60%	37	1,009,152.64 AUD	59	513,337.60 AUD	91	1,472,472.83 AUD	5	50,017.41 AUD
40,000.01 - 50,000.00	31	0.43%	714,132.43 AUD	0.55%	48.69%	14	527,464.38 AUD	17	186,668.05 AUD	30	684,226.67 AUD	1	29,905.76 AUD
50,000.01 - 60,000.00	19	0.26%	422,741.21 AUD	0.33%	59.45%	6	258,517.91 AUD	13	164,223.30 AUD	17	414,951.67 AUD	2	7,789.54 AUD
60,000.01 - 70,000.00	2	0.03%	16,759.41 AUD	0.01%	74.35%	-	- AUD	2	16,759.41 AUD	2	16,759.41 AUD	-	- AUD
70,000.01 - 80,000.00	5	0.07%	141,695.59 AUD	0.11%	63.75%	4	139,351.56 AUD	1	2,344.03 AUD	5	141,695.59 AUD	-	- AUD
80,000.01 - 90,000.00	2	0.03%	72,508.00 AUD	0.06%	58.02%	1	56,682.77 AUD	1	15,825.23 AUD	2	72,508.00 AUD	-	- AUD
90,000.01 - 100,000.00	1	0.01%	70,170.89 AUD	0.05%	60.15%	1	70,170.89 AUD	-	- AUD	1	70,170.89 AUD	-	- AUD
100,000.01 - 110,000.00	2	0.03%	249,060.44 AUD	0.19%	48.91%	2	249,060.44 AUD	-	- AUD	2	249,060.44 AUD	-	- AUD
110,000.01 - 120,000.00	2	0.03%	311,312.86 AUD	0.24%	36.33%	1	265,821.12 AUD	1	45,491.74 AUD	1	45,491.74 AUD	1	265,821.12 AUD
120,000.01 - 130,000.00	-	0.00%	- AUD	0.00%	0.00%	-	- AUD	-	- AUD	-	- AUD	-	- AUD
130,000.01 - 140,000.00	-	0.00%	- AUD	0.00%	0.00%	-	- AUD	-	- AUD	-	- AUD	-	- AUD
140,000.01 - 150,000.00	-	0.00%	- AUD	0.00%	0.00%	-	- AUD	-	- AUD	-	- AUD	-	- AUD
> 150,000.00	-	0.00%	- AUD	0.00%	0.00%	-	- AUD	-	- AUD	-	- AUD	-	- AUD
<b>Total</b>	<b>7,200</b>	<b>100.00%</b>	<b>129,632,643.23 AUD</b>	<b>100.00%</b>	<b>24.59%</b>	<b>3,109</b>	<b>76,192,201.36 AUD</b>	<b>4,091</b>	<b>53,440,441.87 AUD</b>	<b>6,209</b>	<b>115,314,594.57 AUD</b>	<b>991</b>	<b>14,318,048.66 AUD</b>

Statistics Down Payments	
Minimum Down Payment	- AUD
Maximum Down Payment	115,000.00 AUD
Weighted Average Down Payment (Customers that made a Down Payment)	8,913.38 AUD
Weighted Average Down Payment	5,965.13 AUD

Type of Payment

Total Portfolio				
Type of Payment	Number of Contracts	Percentage of Contracts	Outstanding Discounted Balance	Percentage of Balance
Direct Debit	7,055	97.99%	127,209,148.56 AUD	98.13%
Other	145	2.01%	2,423,494.67 AUD	1.87%
<b>Total</b>	<b>7,200</b>	<b>100.00%</b>	<b>129,632,643.23 AUD</b>	<b>100.00%</b>

Balloon				Vehicle Status			
Balloon		No Balloon		New		Used	
Number of Contracts	Outstanding Discounted Balance	Number of Contracts	Outstanding Discounted Balance	Number of Contracts	Outstanding Discounted Balance	Number of Contracts	Outstanding Discounted Balance
3,039	74,460,665	4,016	52,748,483	6,081	113,002,648	974	14,206,500
70	1,731,536	75	691,959	128	2,311,946	17	111,549
<b>3,109</b>	<b>76,192,201.36 AUD</b>	<b>4,091</b>	<b>53,440,441.87 AUD</b>	<b>6,209</b>	<b>115,314,594.57 AUD</b>	<b>991</b>	<b>14,318,048.66 AUD</b>

## Pool Data II

### Distribution of Contracts and Vehicles per Borrower

Number of Contracts Per Borrower	Number of Customers	Percentage of Customers	Number of Contracts	Percentage of Contracts	Outstanding Discounted Principal Balance	Percentage of Balance
1	7,882	98.78%	7,084	98.27%	140,364,411.44 AUD	97.81%
2	89	1.12%	113	1.57%	2,855,461.65 AUD	1.99%
3	5	0.06%	9	0.12%	243,178.19 AUD	0.17%
4	2	0.03%	2	0.03%	47,556.68 AUD	0.03%
5	1	0.01%	1	0.01%	497.67 AUD	0.00%
<b>Total</b>	<b>7,979</b>	<b>100.00%</b>	<b>7,209</b>	<b>100.00%</b>	<b>143,511,105.63 AUD</b>	<b>100.00%</b>

### Top 20 Borrower

Ranking	Outstanding Discounted Principal Balance	Percentage of Overall Balance	Number of Contracts
1	270,790.48 AUD	0.20889 %	2
2	265,821.12 AUD	0.20506 %	1
3	195,659.17 AUD	0.15093 %	1
4	188,744.46 AUD	0.14560 %	1
5	147,118.59 AUD	0.11349 %	3
6	141,393.65 AUD	0.10907 %	1
7	139,308.98 AUD	0.10746 %	2
8	127,152.56 AUD	0.09809 %	1
9	110,314.93 AUD	0.08510 %	1
10	101,844.05 AUD	0.07856 %	1
11	97,506.07 AUD	0.07522 %	2
12	91,568.46 AUD	0.07064 %	1
13	90,926.39 AUD	0.07014 %	1
14	90,926.39 AUD	0.07014 %	1
15	90,885.03 AUD	0.07011 %	1
16	90,698.14 AUD	0.06997 %	1
17	89,244.58 AUD	0.06884 %	2
18	88,148.96 AUD	0.06800 %	1
19	88,137.19 AUD	0.06799 %	1
20	86,506.77 AUD	0.06673 %	1
	<b>2,592,695.97 AUD</b>	<b>2.00003 %</b>	<b>26</b>

### Pool Data III

#### Distribution by Outstanding Discounted Balance

Total Portfolio					Product Type					
Distribution by Outstanding Discounted Balance	Number of Contracts	Percentage of Contracts	Outstanding Discounted Balance	Percentage of Balance	Hire Purchase		Chattel Mortgage		Consumer Loan	
					Number of Contracts	Outstanding Discounted Balance	Number of Contracts	Outstanding Discounted Balance	Number of Contracts	Outstanding Discounted Balance
0.00 - 10,000.00	2,180	30.28%	11,460,427.45 AUD	8.84%	275	1,027,884.40 AUD	430	2,352,099.70 AUD	1,475	8,080,443.35 AUD
10,000.01 - 20,000.00	2,423	33.65%	36,149,351.61 AUD	27.89%	166	2,494,099.51 AUD	559	8,418,321.55 AUD	1,698	25,236,930.55 AUD
20,000.01 - 30,000.00	1,535	21.32%	37,467,610.19 AUD	28.90%	120	2,883,723.03 AUD	398	9,774,033.20 AUD	1,017	24,809,853.96 AUD
30,000.01 - 40,000.00	640	8.89%	21,837,803.11 AUD	16.85%	56	1,941,700.71 AUD	158	5,394,719.59 AUD	426	14,501,382.81 AUD
40,000.01 - 50,000.00	237	3.29%	10,516,016.76 AUD	8.11%	25	1,101,527.56 AUD	56	2,518,657.70 AUD	156	6,895,831.50 AUD
50,000.01 - 60,000.00	98	1.36%	5,301,201.54 AUD	4.09%	20	1,073,231.95 AUD	23	1,238,703.08 AUD	55	2,989,266.51 AUD
60,000.01 - 70,000.00	47	0.65%	3,035,969.76 AUD	2.34%	10	642,417.48 AUD	12	768,982.69 AUD	25	1,624,569.59 AUD
70,000.01 - 80,000.00	21	0.29%	1,577,124.94 AUD	1.22%	4	304,598.12 AUD	3	219,644.52 AUD	14	1,052,882.30 AUD
80,000.01 - 90,000.00	7	0.10%	594,146.76 AUD	0.46%	2	169,900.78 AUD	2	172,748.68 AUD	3	251,497.30 AUD
90,000.01 - 100,000.00	4	0.06%	364,078.02 AUD	0.28%	-	- AUD	2	182,494.85 AUD	2	181,583.17 AUD
100,000.01 - 110,000.00	1	0.01%	101,844.05 AUD	0.08%	-	- AUD	-	- AUD	1	101,844.05 AUD
110,000.01 - 120,000.00	1	0.01%	110,314.93 AUD	0.09%	-	- AUD	1	110,314.93 AUD	-	- AUD
120,000.01 - 130,000.00	1	0.01%	127,152.56 AUD	0.10%	-	- AUD	-	- AUD	1	127,152.56 AUD
130,000.01 - 140,000.00	-	0.00%	- AUD	0.00%	-	- AUD	-	- AUD	-	- AUD
140,000.01 - 150,000.00	1	0.01%	141,393.65 AUD	0.11%	-	- AUD	-	- AUD	1	141,393.65 AUD
> 150,000.00	4	0.06%	848,207.90 AUD	0.65%	-	- AUD	1	197,983.15 AUD	3	650,224.75 AUD
<b>Total</b>	<b>7,200</b>	<b>100.00%</b>	<b>129,632,643.23 AUD</b>	<b>100.00%</b>	<b>678</b>	<b>11,639,083.54 AUD</b>	<b>1,645</b>	<b>31,348,703.64 AUD</b>	<b>4,877</b>	<b>86,644,856.05 AUD</b>

Statistics Outstanding Discounted Balance	
Minimum Outstanding Discounted Balance	- AUD
Maximum Outstanding Discounted Balance	265,821.12 AUD
Average Outstanding Discounted Balance	18,004.53 AUD

#### Distribution by Original Balance

Total Portfolio					Product Type					
Distribution by Original Balance	Number of Contracts	Percentage of Contracts	Outstanding Discounted Balance	Percentage of Balance	Hire Purchase		Chattel Mortgage		Consumer Loan	
					Number of Contracts	Outstanding Discounted Balance	Number of Contracts	Outstanding Discounted Balance	Number of Contracts	Outstanding Discounted Balance
0.00 - 10,000.00	15	0.21%	35,912.39 AUD	0.03%	-	- AUD	1	4,696.94 AUD	14	31,215.45 AUD
10,000.01 - 20,000.00	623	8.65%	3,977,222.13 AUD	3.07%	23	66,055.28 AUD	70	474,227.10 AUD	530	3,436,939.75 AUD
20,000.01 - 30,000.00	1,509	20.96%	15,955,721.85 AUD	12.31%	100	590,866.32 AUD	274	2,757,400.46 AUD	1,135	12,607,455.07 AUD
30,000.01 - 40,000.00	1,771	24.60%	25,791,335.84 AUD	19.90%	126	1,106,107.36 AUD	385	5,463,011.69 AUD	1,260	19,222,216.79 AUD
40,000.01 - 50,000.00	1,350	18.75%	24,808,921.85 AUD	19.14%	129	1,719,753.04 AUD	367	6,670,447.58 AUD	854	16,418,721.23 AUD
50,000.01 - 60,000.00	847	11.76%	19,775,616.95 AUD	15.26%	90	1,681,313.35 AUD	248	5,307,717.18 AUD	509	12,786,586.42 AUD
60,000.01 - 70,000.00	482	6.69%	13,345,758.12 AUD	10.30%	77	1,664,590.72 AUD	128	3,526,777.46 AUD	277	8,154,389.94 AUD
70,000.01 - 80,000.00	242	3.36%	8,727,983.34 AUD	6.73%	30	763,891.57 AUD	61	2,220,397.48 AUD	151	5,743,694.29 AUD
80,000.01 - 90,000.00	139	1.93%	5,435,851.43 AUD	4.19%	31	1,005,023.43 AUD	44	1,510,545.75 AUD	64	2,920,282.25 AUD
90,000.01 - 100,000.00	79	1.10%	3,432,337.67 AUD	2.65%	27	925,562.59 AUD	16	630,565.31 AUD	36	1,876,209.77 AUD
100,000.01 - 110,000.00	65	0.90%	3,180,895.72 AUD	2.45%	20	862,298.33 AUD	24	1,085,963.93 AUD	21	1,232,633.46 AUD
110,000.01 - 120,000.00	26	0.36%	1,141,543.76 AUD	0.88%	6	99,858.03 AUD	11	528,829.87 AUD	9	512,855.86 AUD
120,000.01 - 130,000.00	13	0.18%	703,263.00 AUD	0.54%	1	66,068.99 AUD	6	313,586.79 AUD	6	323,607.22 AUD
130,000.01 - 140,000.00	10	0.14%	672,697.71 AUD	0.52%	3	154,833.97 AUD	3	212,319.58 AUD	4	305,544.16 AUD
140,000.01 - 150,000.00	15	0.21%	948,359.51 AUD	0.73%	9	504,137.91 AUD	5	356,084.41 AUD	1	88,137.19 AUD
> 150,000.00	14	0.19%	1,699,221.96 AUD	1.31%	6	428,722.65 AUD	2	286,132.11 AUD	6	984,367.20 AUD
<b>Total</b>	<b>7,200</b>	<b>100.00%</b>	<b>129,632,643.23 AUD</b>	<b>100.00%</b>	<b>678</b>	<b>11,639,083.54 AUD</b>	<b>1,645</b>	<b>31,348,703.64 AUD</b>	<b>4,877</b>	<b>86,644,856.05 AUD</b>

Statistics	
Minimum Original Balance	5,508.00 AUD
Maximum Original Balance	356,398.00 AUD
Weighted Average Original Principal Balance (by ODPB)	54,377.74 AUD

**Pool Data III**

**Distribution by Outstanding Discounted Balance**

Total Portfolio					Balloon				Vehicle Status			
Distribution by Outstanding Discounted Balance	Number of Contracts	Percentage of Contracts	Outstanding Discounted Balance	Percentage of Balance	Balloon		No Balloon		New		Used	
					Number of Contracts	Outstanding Discounted Balance	Number of Contracts	Outstanding Discounted Balance	Number of Contracts	Outstanding Discounted Balance	Number of Contracts	Outstanding Discounted Balance
0.00 - 10,000.00	2,180	30.28%	11,460,427.45 AUD	8.84%	225	1,205,728.40 AUD	1,955	10,254,699.05 AUD	1,738	9,112,175.88 AUD	442	2,348,251.57 AUD
10,000.01 - 20,000.00	2,423	33.65%	36,149,351.61 AUD	27.89%	1,137	17,590,066.34 AUD	1,286	18,559,285.27 AUD	2,115	31,713,858.37 AUD	308	4,435,493.24 AUD
20,000.01 - 30,000.00	1,535	21.32%	37,467,610.19 AUD	28.90%	948	23,276,207.46 AUD	587	14,191,402.73 AUD	1,378	33,684,799.02 AUD	157	3,782,811.17 AUD
30,000.01 - 40,000.00	640	8.89%	21,837,803.11 AUD	16.85%	477	16,329,357.73 AUD	163	5,508,445.38 AUD	588	20,063,523.15 AUD	52	1,774,279.96 AUD
40,000.01 - 50,000.00	237	3.29%	10,516,016.76 AUD	8.11%	173	7,735,723.72 AUD	64	2,780,293.04 AUD	222	9,843,777.42 AUD	15	672,239.34 AUD
50,000.01 - 60,000.00	98	1.36%	5,301,201.54 AUD	4.09%	74	3,986,009.08 AUD	24	1,315,192.46 AUD	91	4,913,781.57 AUD	7	387,419.97 AUD
60,000.01 - 70,000.00	47	0.65%	3,035,969.76 AUD	2.34%	40	2,584,392.97 AUD	7	451,576.79 AUD	41	2,649,824.14 AUD	6	386,145.62 AUD
70,000.01 - 80,000.00	21	0.29%	1,577,124.94 AUD	1.22%	16	1,197,577.79 AUD	5	379,547.15 AUD	20	1,504,080.46 AUD	1	73,044.48 AUD
80,000.01 - 90,000.00	7	0.10%	594,146.76 AUD	0.46%	7	594,146.76 AUD	-	- AUD	7	594,146.76 AUD	-	- AUD
90,000.01 - 100,000.00	4	0.06%	364,078.02 AUD	0.28%	4	364,078.02 AUD	-	- AUD	3	273,379.88 AUD	1	90,698.14 AUD
100,000.01 - 110,000.00	1	0.01%	101,844.05 AUD	0.08%	1	101,844.05 AUD	-	- AUD	-	- AUD	1	101,844.05 AUD
110,000.01 - 120,000.00	1	0.01%	110,314.93 AUD	0.09%	1	110,314.93 AUD	-	- AUD	1	110,314.93 AUD	-	- AUD
120,000.01 - 130,000.00	1	0.01%	127,152.56 AUD	0.10%	1	127,152.56 AUD	-	- AUD	1	127,152.56 AUD	-	- AUD
130,000.01 - 140,000.00	-	0.00%	- AUD	0.00%	-	- AUD	-	- AUD	-	- AUD	-	- AUD
140,000.01 - 150,000.00	1	0.01%	141,393.65 AUD	0.11%	1	141,393.65 AUD	-	- AUD	1	141,393.65 AUD	-	- AUD
> 150,000.00	4	0.06%	848,207.90 AUD	0.65%	4	848,207.90 AUD	-	- AUD	3	582,386.78 AUD	1	265,821.12 AUD
<b>Total</b>	<b>7,200</b>	<b>100.00%</b>	<b>129,632,643.23 AUD</b>	<b>100.00%</b>	<b>3,109</b>	<b>76,192,201.36 AUD</b>	<b>4,091</b>	<b>53,440,441.87 AUD</b>	<b>6,209</b>	<b>115,314,594.57 AUD</b>	<b>991</b>	<b>14,318,048.66 AUD</b>

Statistics Outstanding Discounted Balance	
Minimum Outstanding Discounted Balance	- AUD
Maximum Outstanding Discounted Balance	265,821.12 AUD
Average Outstanding Discounted Balance	18,004.53 AUD

**Distribution by Original Balance**

Total Portfolio					Balloon				Vehicle Status			
Distribution by Original Balance	Number of Contracts	Percentage of Contracts	Outstanding Discounted Balance	Percentage of Balance	Balloon		No Balloon		New		Used	
					Number of Contracts	Outstanding Discounted Balance	Number of Contracts	Outstanding Discounted Balance	Number of Contracts	Outstanding Discounted Balance	Number of Contracts	Outstanding Discounted Balance
0.00 - 10,000.00	15	0.21%	35,912.39 AUD	0.03%	-	- AUD	15	35,912.39 AUD	8	22,154.73 AUD	7	13,757.66 AUD
10,000.01 - 20,000.00	623	8.65%	3,977,222.13 AUD	3.07%	39	365,451.67 AUD	584	3,611,770.46 AUD	385	2,457,384.51 AUD	238	1,519,837.62 AUD
20,000.01 - 30,000.00	1,509	20.96%	15,955,721.85 AUD	12.31%	367	4,652,270.98 AUD	1,142	11,303,450.87 AUD	1,211	12,779,169.57 AUD	298	3,176,552.28 AUD
30,000.01 - 40,000.00	1,771	24.60%	25,791,335.84 AUD	19.90%	712	11,905,195.30 AUD	1,059	13,886,140.54 AUD	1,552	22,434,352.23 AUD	219	3,356,983.61 AUD
40,000.01 - 50,000.00	1,350	18.75%	24,808,921.85 AUD	19.14%	698	14,930,518.34 AUD	652	9,878,403.51 AUD	1,249	22,831,385.78 AUD	101	1,977,536.07 AUD
50,000.01 - 60,000.00	847	11.76%	19,775,616.95 AUD	15.26%	511	13,272,607.27 AUD	336	6,503,009.68 AUD	789	18,392,727.23 AUD	58	1,382,889.72 AUD
60,000.01 - 70,000.00	482	6.69%	13,345,758.12 AUD	10.30%	313	9,461,236.28 AUD	169	3,884,521.84 AUD	451	12,424,059.53 AUD	31	921,698.59 AUD
70,000.01 - 80,000.00	242	3.36%	8,727,983.34 AUD	6.73%	176	6,612,709.63 AUD	66	2,115,273.71 AUD	226	8,161,390.98 AUD	16	566,592.36 AUD
80,000.01 - 90,000.00	139	1.93%	5,435,851.43 AUD	4.19%	115	4,690,526.23 AUD	24	745,325.20 AUD	126	4,901,191.76 AUD	13	534,659.67 AUD
90,000.01 - 100,000.00	79	1.10%	3,432,337.67 AUD	2.65%	60	2,750,850.23 AUD	19	681,487.44 AUD	77	3,297,338.65 AUD	2	134,999.02 AUD
100,000.01 - 110,000.00	65	0.90%	3,180,895.72 AUD	2.45%	54	2,775,060.35 AUD	11	405,835.37 AUD	63	3,091,425.57 AUD	2	89,470.15 AUD
110,000.01 - 120,000.00	26	0.36%	1,141,543.76 AUD	0.88%	19	1,038,129.89 AUD	7	103,413.87 AUD	26	1,141,543.76 AUD	-	- AUD
120,000.01 - 130,000.00	13	0.18%	703,263.00 AUD	0.54%	8	511,356.54 AUD	5	191,906.46 AUD	12	645,238.85 AUD	1	58,024.15 AUD
130,000.01 - 140,000.00	10	0.14%	672,697.71 AUD	0.52%	8	578,707.18 AUD	2	93,990.53 AUD	7	418,234.41 AUD	3	254,463.30 AUD
140,000.01 - 150,000.00	15	0.21%	948,359.51 AUD	0.73%	15	948,359.51 AUD	-	- AUD	15	948,359.51 AUD	-	- AUD
> 150,000.00	14	0.19%	1,699,221.96 AUD	1.31%	14	1,699,221.96 AUD	-	- AUD	12	1,368,637.50 AUD	2	330,584.46 AUD
<b>Total</b>	<b>7,200</b>	<b>100.00%</b>	<b>129,632,643.23 AUD</b>	<b>100.00%</b>	<b>3,109</b>	<b>76,192,201.36 AUD</b>	<b>4,091</b>	<b>53,440,441.87 AUD</b>	<b>6,209</b>	<b>115,314,594.57 AUD</b>	<b>991</b>	<b>14,318,048.66 AUD</b>

Statistics	
Minimum Original Balance	5,508.00 AUD
Maximum Original Balance	356,398.00 AUD
Weighted Average Original Principal Balance (by ODPB)	54,377.74 AUD

#### Pool Data IV

#### Interest Rate paid by the Receivable Debtor

Total Portfolio					Product Type					
Interest Rate paid by the Receivable Debtor	Number of Contracts	Percentage of Contracts	Outstanding Discounted Balance	Percentage of Balance	Hire Purchase		Chattel Mortgage		Consumer Loan	
					Number of Contracts	Outstanding Discounted Balance	Number of Contracts	Outstanding Discounted Balance	Number of Contracts	Outstanding Discounted Balance
0.00%	378	5.25%	8,218,413.02 AUD	6.34%	-	- AUD	149	3,403,913.59 AUD	229	4,814,499.43 AUD
0.01% - 1.00%	190	2.64%	4,609,961.97 AUD	3.56%	-	- AUD	10	324,475.79 AUD	180	4,285,486.18 AUD
1.01% - 2.00%	413	5.74%	5,795,994.37 AUD	4.47%	-	- AUD	29	434,669.93 AUD	384	5,361,324.44 AUD
2.01% - 3.00%	583	8.10%	6,017,538.76 AUD	4.64%	15	130,797.53 AUD	74	859,742.62 AUD	494	5,026,998.61 AUD
3.01% - 4.00%	49	0.68%	447,948.96 AUD	0.35%	5	43,364.01 AUD	8	74,915.24 AUD	36	329,669.71 AUD
4.01% - 5.00%	171	2.38%	3,081,644.90 AUD	2.38%	29	574,835.40 AUD	37	838,524.56 AUD	105	1,668,284.94 AUD
5.01% - 6.00%	269	3.74%	5,656,679.79 AUD	4.36%	28	266,354.71 AUD	111	2,107,438.46 AUD	130	3,282,886.62 AUD
6.01% - 7.00%	811	11.26%	19,880,033.50 AUD	15.34%	27	606,992.14 AUD	182	4,113,375.39 AUD	602	15,159,665.97 AUD
7.01% - 8.00%	1,110	15.42%	22,878,529.39 AUD	17.65%	79	1,895,115.24 AUD	242	5,462,055.02 AUD	789	15,521,359.13 AUD
8.01% - 9.00%	1,282	17.81%	22,911,388.42 AUD	17.67%	176	3,160,426.29 AUD	338	6,572,762.46 AUD	768	13,178,199.67 AUD
9.01% - 10.00%	911	12.65%	14,373,530.34 AUD	11.09%	148	2,341,647.37 AUD	203	3,128,893.36 AUD	560	8,902,989.61 AUD
10.01% - 11.00%	493	6.85%	7,706,369.22 AUD	5.94%	69	1,242,735.31 AUD	123	1,995,781.00 AUD	301	4,467,852.91 AUD
11.01% - 12.00%	265	3.68%	4,248,647.79 AUD	3.28%	47	843,021.66 AUD	69	998,910.70 AUD	149	2,406,715.43 AUD
12.01% - 13.00%	146	2.03%	2,040,327.05 AUD	1.57%	19	208,517.36 AUD	44	621,793.71 AUD	83	1,210,015.98 AUD
13.01% - 14.00%	54	0.75%	742,726.83 AUD	0.57%	14	125,924.46 AUD	10	172,123.81 AUD	30	444,678.56 AUD
14.01% - 15.00%	47	0.65%	750,251.84 AUD	0.58%	7	96,390.67 AUD	11	174,959.53 AUD	29	478,901.64 AUD
15.01% - 16.00%	28	0.39%	272,657.08 AUD	0.21%	15	102,961.39 AUD	5	64,368.47 AUD	8	105,327.22 AUD
> 16.00%	-	0.00%	- AUD	0.00%	-	- AUD	-	- AUD	-	- AUD
<b>Total</b>	<b>7,200</b>	<b>100.00%</b>	<b>129,632,643.23 AUD</b>	<b>100.00%</b>	<b>678</b>	<b>11,639,083.54 AUD</b>	<b>1,645</b>	<b>31,348,703.64 AUD</b>	<b>4,877</b>	<b>86,644,856.05 AUD</b>

Statistics Interest Rate		
Minimum Interest Rate Debtor		0.00%
Maximum Interest Rate Debtor		15.99%
Weighted Average Interest Rate Debtor		7.03%

## Pool Data IV

### Interest Rate paid by the Receivable Debtor

Total Portfolio					Balloon				Vehicle Status			
Interest Rate paid by the Receivable Debtor	Number of Contracts	Percentage of Contracts	Outstanding Discounted Balance	Percentage of Balance	Balloon		No Balloon		New		Used	
					Number of Contracts	Outstanding Discounted Balance	Number of Contracts	Outstanding Discounted Balance	Number of Contracts	Outstanding Discounted Balance	Number of Contracts	Outstanding Discounted Balance
0.00%	378	5.25%	8,218,413.02 AUD	6.34%	224	5,579,395.03 AUD	154	2,639,017.99 AUD	369	8,079,665.84 AUD	9	138,747.18 AUD
0.01% - 1.00%	190	2.64%	4,609,961.97 AUD	3.56%	116	3,270,807.14 AUD	74	1,339,154.83 AUD	184	4,546,186.39 AUD	6	63,775.58 AUD
1.01% - 2.00%	413	5.74%	5,795,994.37 AUD	4.47%	198	3,477,454.16 AUD	215	2,318,540.21 AUD	409	5,749,167.65 AUD	4	46,826.72 AUD
2.01% - 3.00%	583	8.10%	6,017,538.76 AUD	4.64%	273	4,296,093.75 AUD	310	1,721,445.01 AUD	575	5,939,008.78 AUD	8	78,529.98 AUD
3.01% - 4.00%	49	0.68%	447,948.96 AUD	0.35%	27	306,421.02 AUD	22	141,527.94 AUD	48	438,621.27 AUD	1	9,327.69 AUD
4.01% - 5.00%	171	2.38%	3,081,644.90 AUD	2.38%	114	2,870,088.55 AUD	57	211,556.35 AUD	158	2,978,930.43 AUD	13	102,714.47 AUD
5.01% - 6.00%	269	3.74%	5,656,679.79 AUD	4.36%	149	3,982,652.48 AUD	120	1,674,027.31 AUD	261	5,318,949.38 AUD	8	337,730.41 AUD
6.01% - 7.00%	811	11.26%	19,880,033.50 AUD	15.34%	406	13,223,835.33 AUD	405	6,656,198.17 AUD	734	18,360,440.22 AUD	77	1,519,593.28 AUD
7.01% - 8.00%	1,110	15.42%	22,878,529.39 AUD	17.65%	466	13,198,144.26 AUD	644	9,680,385.13 AUD	910	19,425,056.67 AUD	200	3,453,472.72 AUD
8.01% - 9.00%	1,282	17.81%	22,911,388.42 AUD	17.67%	527	12,824,899.60 AUD	755	10,086,488.82 AUD	1,074	19,989,770.99 AUD	208	2,921,617.43 AUD
9.01% - 10.00%	911	12.65%	14,373,530.34 AUD	11.09%	320	6,959,583.17 AUD	591	7,413,947.17 AUD	718	11,968,064.18 AUD	193	2,405,466.16 AUD
10.01% - 11.00%	493	6.85%	7,706,369.22 AUD	5.94%	139	3,263,631.55 AUD	354	4,442,737.67 AUD	395	6,492,793.12 AUD	98	1,213,576.10 AUD
11.01% - 12.00%	265	3.68%	4,248,647.79 AUD	3.28%	84	1,751,489.10 AUD	181	2,497,158.69 AUD	196	3,300,207.02 AUD	69	948,440.77 AUD
12.01% - 13.00%	146	2.03%	2,040,327.05 AUD	1.57%	34	624,058.10 AUD	112	1,416,268.95 AUD	97	1,527,177.01 AUD	49	513,150.04 AUD
13.01% - 14.00%	54	0.75%	742,726.83 AUD	0.57%	13	255,079.79 AUD	41	487,647.04 AUD	37	514,157.35 AUD	17	228,569.48 AUD
14.01% - 15.00%	47	0.65%	750,251.84 AUD	0.58%	10	179,641.28 AUD	37	570,610.56 AUD	27	467,384.63 AUD	20	282,867.21 AUD
15.01% - 16.00%	28	0.39%	272,657.08 AUD	0.21%	9	128,927.05 AUD	19	143,730.03 AUD	17	219,013.64 AUD	11	53,643.44 AUD
> 16.00%	-	0.00%	- AUD	0.00%	-	- AUD	-	- AUD	-	- AUD	-	- AUD
<b>Total</b>	<b>7,200</b>	<b>100.00%</b>	<b>129,632,643.23 AUD</b>	<b>100.00%</b>	<b>3,109</b>	<b>76,192,201.36 AUD</b>	<b>4,091</b>	<b>53,440,441.87 AUD</b>	<b>6,209</b>	<b>115,314,594.57 AUD</b>	<b>991</b>	<b>14,318,048.66 AUD</b>

Statistics Interest Rate		
Minimum Interest Rate Debtor		0.00%
Maximum Interest Rate Debtor		15.99%
Weighted Average Interest Rate Debtor		7.03%

Pool Data V

Original Term

Total Portfolio					Product Type					
Length of Original Term (months)	Number of Contracts	Percentage of Contracts	Outstanding Discounted Balance	Percentage of Balance	Hire Purchase		Chattel Mortgage		Consumer Loan	
					Number of Contracts	Outstanding Discounted Balance	Number of Contracts	Outstanding Discounted Balance	Number of Contracts	Outstanding Discounted Balance
0 - 11	-	0.00%	- AUD	0.00%	-	- AUD	-	- AUD	-	- AUD
12 - 23	-	0.00%	- AUD	0.00%	-	- AUD	-	- AUD	-	- AUD
24 - 35	3	0.04%	2,987.32 AUD	0.00%	-	- AUD	1	667.29 AUD	2	2,320.03 AUD
36 - 47	308	4.28%	2,639,445.45 AUD	2.04%	3	- AUD	40	534,746.78 AUD	265	2,104,698.67 AUD
48 - 59	2,304	32.00%	36,385,462.96 AUD	28.07%	112	1,310,845.01 AUD	438	8,418,917.34 AUD	1,754	26,655,700.61 AUD
60 - 71	3,885	53.96%	73,269,901.49 AUD	56.52%	563	10,328,238.53 AUD	1,166	22,394,372.23 AUD	2,156	40,547,290.73 AUD
> 71	700	9.72%	17,334,846.01 AUD	13.37%	-	- AUD	-	- AUD	700	17,334,846.01 AUD
<b>Total</b>	<b>7,200</b>	<b>100.00%</b>	<b>129,632,643.23 AUD</b>	<b>100.00%</b>	<b>678</b>	<b>11,639,083.54 AUD</b>	<b>1,645</b>	<b>31,348,703.64 AUD</b>	<b>4,877</b>	<b>86,644,856.05 AUD</b>

Statistics Original Term			
Minimum Original Term in months			30
Maximum Original Term in months			84
Weighted Average Original Term month (by ODPB)			59.29

Remaining Term

Total Portfolio					Product Type					
Length of Remaining Term (months)	Number of Contracts	Percentage of Contracts	Outstanding Discounted Balance	Percentage of Balance	Hire Purchase		Chattel Mortgage		Consumer Loan	
					Number of Contracts	Outstanding Discounted Balance	Number of Contracts	Outstanding Discounted Balance	Number of Contracts	Outstanding Discounted Balance
0 - 11	2,781	38.63%	34,253,842.41 AUD	26.42%	531	8,092,379.40 AUD	780	12,119,744.44 AUD	1,470	14,041,718.57 AUD
12 - 23	2,385	33.13%	45,374,019.74 AUD	35.00%	144	3,442,862.35 AUD	595	12,419,205.60 AUD	1,646	29,511,951.79 AUD
24 - 35	1,429	19.85%	33,924,364.35 AUD	26.17%	3	103,841.79 AUD	269	6,778,632.40 AUD	1,157	27,041,890.16 AUD
36 - 47	256	3.56%	5,959,889.72 AUD	4.60%	-	- AUD	1	31,121.20 AUD	255	5,928,768.52 AUD
48 - 59	347	4.82%	10,032,862.83 AUD	7.74%	-	- AUD	-	- AUD	347	10,032,862.83 AUD
60 - 71	2	0.03%	87,664.18 AUD	0.07%	-	- AUD	-	- AUD	2	87,664.18 AUD
> 71	-	0.00%	- AUD	0.00%	-	- AUD	-	- AUD	-	- AUD
<b>Total</b>	<b>7,200</b>	<b>100.00%</b>	<b>129,632,643.23 AUD</b>	<b>100.00%</b>	<b>678</b>	<b>11,639,083.54 AUD</b>	<b>1,645</b>	<b>31,348,703.64 AUD</b>	<b>4,877</b>	<b>86,644,856.05 AUD</b>

Statistics Remaining Term			
Minimum Remaining Term in months			0
Maximum Remaining Term in months			60
Weighted Average Remaining Term in months (by ODPB)			21.54

Distribution by Seasoning

Total Portfolio					Product Type					
Seasoning (months)	Number of Contracts	Percentage of Contracts	Outstanding Discounted Balance	Percentage of Balance	Hire Purchase		Chattel Mortgage		Consumer Loan	
					Number of Contracts	Outstanding Discounted Balance	Number of Contracts	Outstanding Discounted Balance	Number of Contracts	Outstanding Discounted Balance
0 - 11	-	0.00%	- AUD	0.00%	-	- AUD	-	- AUD	-	- AUD
12 - 23	5	0.07%	123,455.30 AUD	0.10%	-	- AUD	1	31,121.20 AUD	4	92,334.10 AUD
24 - 35	3,051	42.38%	65,671,203.65 AUD	50.66%	3	81,927.73 AUD	514	12,007,596.73 AUD	2,534	53,581,679.19 AUD
36 - 47	2,374	32.97%	38,493,321.84 AUD	29.69%	123	2,572,319.95 AUD	454	8,297,115.60 AUD	1,797	27,623,886.29 AUD
48 - 59	1,655	22.99%	24,329,423.12 AUD	18.77%	492	8,458,050.27 AUD	643	10,636,402.62 AUD	520	5,234,970.23 AUD
60 - 71	113	1.57%	1,004,577.16 AUD	0.77%	60	526,785.59 AUD	33	376,467.49 AUD	20	101,324.08 AUD
> 71	2	0.03%	10,662.16 AUD	0.01%	-	- AUD	-	- AUD	2	10,662.16 AUD
<b>Total</b>	<b>7,200</b>	<b>100.00%</b>	<b>129,632,643.23 AUD</b>	<b>100.00%</b>	<b>678</b>	<b>11,639,083.54 AUD</b>	<b>1,645</b>	<b>31,348,703.64 AUD</b>	<b>4,877</b>	<b>86,644,856.05 AUD</b>

Statistics Seasoning			
Minimum Seasoning in months			17
Maximum Seasoning in months			77
Weighted Average Seasoning Term in months (by ODPB)			37.91



Pool Data V

Original Term

Total Portfolio					Balloon				Vehicle Status			
Length of Original Term (months)	Number of Contracts	Percentage of Contracts	Outstanding Discounted Balance	Percentage of Balance	Balloon		No Balloon		New		Used	
					Number of Contracts	Outstanding Discounted Balance	Number of Contracts	Outstanding Discounted Balance	Number of Contracts	Outstanding Discounted Balance	Number of Contracts	Outstanding Discounted Balance
0 - 11	-	0.00%	- AUD	0.00%	-	- AUD	-	- AUD	-	- AUD	-	- AUD
12 - 23	-	0.00%	- AUD	0.00%	-	- AUD	-	- AUD	-	- AUD	-	- AUD
24 - 35	3	0.04%	2,987.32 AUD	0.00%	-	- AUD	3	2,987.32 AUD	1	1,378.43 AUD	2	1,608.89 AUD
36 - 47	308	4.28%	2,639,445.45 AUD	2.04%	72	1,510,219.46 AUD	236	1,129,225.99 AUD	243	2,314,335.48 AUD	65	325,109.97 AUD
48 - 59	2,304	32.00%	36,385,462.96 AUD	28.07%	1,207	25,781,541.49 AUD	1,097	10,603,921.47 AUD	2,149	34,920,228.08 AUD	155	1,465,234.88 AUD
60 - 71	3,885	53.96%	73,269,901.49 AUD	56.52%	1,830	48,900,440.41 AUD	2,055	24,369,461.08 AUD	3,257	64,019,141.99 AUD	628	9,250,759.50 AUD
> 71	700	9.72%	17,334,846.01 AUD	13.37%	-	- AUD	700	17,334,846.01 AUD	559	14,059,510.59 AUD	141	3,275,335.42 AUD
<b>Total</b>	<b>7,200</b>	<b>100.00%</b>	<b>129,632,643.23 AUD</b>	<b>100.00%</b>	<b>3,109</b>	<b>76,192,201.36 AUD</b>	<b>4,091</b>	<b>53,440,441.87 AUD</b>	<b>6,209</b>	<b>115,314,594.57 AUD</b>	<b>991</b>	<b>14,318,048.66 AUD</b>

Statistics Original Term		
Minimum Original Term in months		30
Maximum Original Term in months		84
Weighted Average Original Term month (by ODPB)		59.29

Remaining Term

Total Portfolio					Balloon				Vehicle Status			
Length of Remaining Term (months)	Number of Contracts	Percentage of Contracts	Outstanding Discounted Balance	Percentage of Balance	Balloon		No Balloon		New		Used	
					Number of Contracts	Outstanding Discounted Balance	Number of Contracts	Outstanding Discounted Balance	Number of Contracts	Outstanding Discounted Balance	Number of Contracts	Outstanding Discounted Balance
0 - 11	2,781	38.63%	34,253,842.41 AUD	26.42%	1,414	28,151,736.88 AUD	1,367	6,102,105.53 AUD	2,465	31,781,269.90 AUD	316	2,472,572.51 AUD
12 - 23	2,385	33.13%	45,374,019.74 AUD	35.00%	1,162	29,896,186.00 AUD	1,223	15,477,833.74 AUD	2,096	41,698,749.50 AUD	289	3,675,270.24 AUD
24 - 35	1,429	19.85%	33,924,364.35 AUD	26.17%	532	18,120,424.99 AUD	897	15,803,939.36 AUD	1,166	28,781,153.45 AUD	263	5,143,210.90 AUD
36 - 47	256	3.56%	5,959,889.72 AUD	4.60%	1	23,853.49 AUD	255	5,936,036.23 AUD	208	4,930,739.78 AUD	48	1,029,149.94 AUD
48 - 59	347	4.82%	10,032,862.83 AUD	7.74%	-	- AUD	347	10,032,862.83 AUD	272	8,035,017.76 AUD	75	1,997,845.07 AUD
60 - 71	2	0.03%	87,664.18 AUD	0.07%	-	- AUD	2	87,664.18 AUD	2	87,664.18 AUD	-	- AUD
> 71	-	0.00%	- AUD	0.00%	-	- AUD	-	- AUD	-	- AUD	-	- AUD
<b>Total</b>	<b>7,200</b>	<b>100.00%</b>	<b>129,632,643.23 AUD</b>	<b>100.00%</b>	<b>3,109</b>	<b>76,192,201.36 AUD</b>	<b>4,091</b>	<b>53,440,441.87 AUD</b>	<b>6,209</b>	<b>115,314,594.57 AUD</b>	<b>991</b>	<b>14,318,048.66 AUD</b>

Statistics Remaining Term		
Minimum Remaining Term in months		0
Maximum Remaining Term in months		60
Weighted Average Remaining Term in months (by ODPB)		21.54

Distribution by Seasoning

Total Portfolio					Balloon				Vehicle Status			
Seasoning (months)	Number of Contracts	Percentage of Contracts	Outstanding Discounted Balance	Percentage of Balance	Balloon		No Balloon		New		Used	
					Number of Contracts	Outstanding Discounted Balance	Number of Contracts	Outstanding Discounted Balance	Number of Contracts	Outstanding Discounted Balance	Number of Contracts	Outstanding Discounted Balance
0 - 11	-	0.00%	- AUD	0.00%	-	- AUD	-	- AUD	-	- AUD	-	- AUD
12 - 23	5	0.07%	123,455.30 AUD	0.10%	1	23,853.49 AUD	4	99,601.81 AUD	5	123,455.30 AUD	-	- AUD
24 - 35	3,051	42.38%	65,671,203.65 AUD	50.66%	1,174	33,167,023.42 AUD	1,877	32,504,180.23 AUD	2,611	57,765,544.93 AUD	440	7,905,658.72 AUD
36 - 47	2,374	32.97%	38,493,321.84 AUD	29.69%	966	22,398,274.16 AUD	1,408	16,095,047.68 AUD	2,045	34,277,250.58 AUD	329	4,216,071.26 AUD
48 - 59	1,655	22.99%	24,329,423.12 AUD	18.77%	906	19,699,824.21 AUD	749	4,629,598.91 AUD	1,447	22,320,172.18 AUD	208	2,009,250.94 AUD
60 - 71	113	1.57%	1,004,577.16 AUD	0.77%	62	903,226.08 AUD	51	101,351.08 AUD	101	828,171.58 AUD	12	176,405.58 AUD
> 71	2	0.03%	10,662.16 AUD	0.01%	-	- AUD	2	10,662.16 AUD	-	- AUD	2	10,662.16 AUD
<b>Total</b>	<b>7,200</b>	<b>100.00%</b>	<b>129,632,643.23 AUD</b>	<b>100.00%</b>	<b>3,109</b>	<b>76,192,201.36 AUD</b>	<b>4,091</b>	<b>53,440,441.87 AUD</b>	<b>6,209</b>	<b>115,314,594.57 AUD</b>	<b>991</b>	<b>14,318,048.66 AUD</b>

Statistics Seasoning		
Minimum Seasoning in months		17
Maximum Seasoning in months		77
Weighted Average Seasoning Term in months (by ODPB)		37.91

## Pool Data VI

### Product Type

Total Portfolio					Balloon				Vehicle Status			
Product Type	Number of Contracts	Percentage of Contracts	Outstanding Discounted Balance	Percentage of Balance	Balloon		No Balloon		New		Used	
					Number of Contracts	Outstanding Discounted Balance	Number of Contracts	Outstanding Discounted Balance	Number of Contracts	Outstanding Discounted Balance	Number of Contracts	Outstanding Discounted Balance
Hire Purchase	678	9.42%	11,639,083.54 AUD	8.98%	448	10,529,278.19 AUD	230	1,109,805.35 AUD	578	10,489,515.11 AUD	100	1,149,568.43 AUD
Chattel Mortgage	1,645	22.85%	31,348,703.64 AUD	24.18%	1,030	24,886,599.96 AUD	615	6,462,103.68 AUD	1,466	28,840,751.57 AUD	179	2,507,952.07 AUD
Consumer Loan	4,877	67.74%	86,644,856.05 AUD	66.84%	1,631	40,776,323.21 AUD	3,246	45,868,532.84 AUD	4,165	75,984,327.89 AUD	712	10,660,528.16 AUD
<b>Total</b>	<b>7,200</b>	<b>100.00%</b>	<b>129,632,643.23 AUD</b>	<b>100.00%</b>	<b>3,109</b>	<b>76,192,201.36 AUD</b>	<b>4,091</b>	<b>53,440,441.87 AUD</b>	<b>6,209</b>	<b>115,314,594.57 AUD</b>	<b>991</b>	<b>14,318,048.66 AUD</b>

### Vehicle Status

Total Portfolio					Product Type					
Type of Car	Number of Contracts	Percentage of Contracts	Outstanding Discounted Balance	Percentage of Balance	Hire Purchase		Chattel Mortgage		Consumer Loan	
					Number of Contracts	Outstanding Discounted Balance	Number of Contracts	Outstanding Discounted Balance	Number of Contracts	Outstanding Discounted Balance
New Vehicles	6,209	86.24%	115,314,594.57 AUD	88.95%	578	10,489,515.11 AUD	1,466	28,840,751.57 AUD	4,165	75,984,327.89 AUD
Used Vehicles	991	13.76%	14,318,048.66 AUD	11.05%	100	1,149,568.43 AUD	179	2,507,952.07 AUD	712	10,660,528.16 AUD
<b>Total</b>	<b>7,200</b>	<b>100.00%</b>	<b>129,632,643.23 AUD</b>	<b>100.00%</b>	<b>678</b>	<b>11,639,083.54 AUD</b>	<b>1,645</b>	<b>31,348,703.64 AUD</b>	<b>4,877</b>	<b>86,644,856.05 AUD</b>

### Balloon

Total Portfolio				
Balloon	Number of Contracts	Percentage of Contracts	Outstanding Discounted Balance	Percentage of Balance
Balloon	3,109	43.18%	76,192,201.36 AUD	58.78%
No Balloon	4,091	56.82%	53,440,441.87 AUD	41.22%
<b>Total</b>	<b>7,200</b>	<b>100.00%</b>	<b>129,632,643.23 AUD</b>	<b>100.00%</b>

Pool Data VII

Distribution by Vehicle Brand and Models

Total Portfolio						Product Type					
Make	Model	Number of Contracts	Percentage of Contracts	Outstanding Discounted Balance	Percentage of Balance	Hire Purchase		Chattel Mortgage		Consumer Loan	
						Number of Contracts	Outstanding Discounted Balance	Number of Contracts	Outstanding Discounted Balance	Number of Contracts	Outstanding Discounted Balance
Volkswagen Group Vehicles											
AUDI	A1	176	2.44%	2,208,978.87 AUD	1.70%	11	135,667.30 AUD	21	289,256.95 AUD	144	1,784,054.62 AUD
	A3	197	2.74%	3,566,710.56 AUD	2.75%	35	464,126.98 AUD	36	731,342.81 AUD	126	2,371,240.77 AUD
	A4	430	5.97%	10,000,397.49 AUD	7.71%	51	922,207.01 AUD	57	1,384,705.40 AUD	322	7,693,485.08 AUD
	A5	159	2.21%	5,648,899.54 AUD	4.36%	55	1,807,660.70 AUD	38	1,411,487.60 AUD	66	2,429,751.24 AUD
	A6	50	0.69%	1,662,388.14 AUD	1.28%	8	232,067.47 AUD	14	459,855.87 AUD	28	970,464.80 AUD
	A7	10	0.14%	655,613.33 AUD	0.51%	1	79,952.42 AUD	5	291,978.94 AUD	4	283,681.97 AUD
	A8	7	0.10%	220,769.97 AUD	0.17%	2	81,732.98 AUD	1	32,638.48 AUD	4	106,398.51 AUD
	Q3	114	1.58%	3,340,206.00 AUD	2.58%	1	12,756.71 AUD	15	469,959.59 AUD	98	2,857,489.70 AUD
	Q5	251	3.49%	7,732,005.69 AUD	5.96%	51	1,281,176.86 AUD	62	2,032,884.93 AUD	138	4,417,943.90 AUD
	Q7	124	1.72%	4,484,946.80 AUD	3.46%	36	1,170,634.86 AUD	37	1,299,891.27 AUD	51	2,014,420.67 AUD
	R8	2	0.03%	249,060.44 AUD	0.19%	1	51,077.29 AUD	1	197,983.15 AUD	-	- AUD
	TT	39	0.54%	1,129,178.45 AUD	0.87%	7	134,993.89 AUD	16	558,629.12 AUD	16	435,555.44 AUD
	SubTotal	1,559	21.65%	40,899,155.28 AUD	31.55%	259	6,374,054.47 AUD	303	9,160,614.11 AUD	997	25,364,486.70 AUD
BENTLEY	CONTINENTAL	-	0.00%	- AUD	0.00%	-	-	-	-	-	-
	MULSANNE	1	0.01%	265,821.12 AUD	0.21%	-	-	-	-	1	265,821
	SubTotal	1	0.01%	265,821.12 AUD	0.21%	-	- AUD	-	- AUD	1	265,821.12 AUD
LAMBORGHINI	GALLARDO	-	0.00%	- AUD	0.00%	-	- AUD	-	- AUD	-	- AUD
	SubTotal	-	0.00%	- AUD	0.00%	-	- AUD	-	- AUD	-	- AUD
PORSCHE	BOXSTER	1	0.01%	40,113.81 AUD	0.03%	1	40,113.81 AUD	-	- AUD	-	- AUD
	CAYENNE	2	0.03%	81,900.84 AUD	0.06%	2	81,900.84 AUD	-	- AUD	-	- AUD
	CAYMAN	-	0.00%	- AUD	0.00%	-	- AUD	-	- AUD	-	- AUD
	SubTotal	3	0.04%	122,014.65 AUD	0.09%	3	122,014.65 AUD	-	- AUD	-	- AUD
SKODA	FABIA	12	0.17%	153,531.08 AUD	0.12%	-	- AUD	1	8,793.10 AUD	11	144,737.98 AUD
	OCTAVIA	86	1.19%	919,765.65 AUD	0.71%	9	62,621.45 AUD	13	120,191.35 AUD	64	736,952.85 AUD
	ROOMSTER	1	0.01%	13,297.63 AUD	0.01%	-	- AUD	-	- AUD	1	13,297.63 AUD
	SUPERB	40	0.56%	618,603.48 AUD	0.48%	1	1,325.72 AUD	6	70,047.31 AUD	33	547,230.45 AUD
	YETI	62	0.86%	682,322.03 AUD	0.53%	-	- AUD	8	106,733.67 AUD	54	575,588.36 AUD
	SubTotal	201	2.79%	2,387,519.87 AUD	1.84%	10	63,947.17 AUD	28	305,765.43 AUD	163	2,017,807.27 AUD
VOLKSWAGEN	AMAROK	542	7.53%	11,417,082.00 AUD	8.81%	34	578,204.58 AUD	256	5,329,770.37 AUD	252	5,509,107.05 AUD
	BORA	1	0.01%	2,464.98 AUD	0.00%	-	- AUD	-	- AUD	1	2,464.98 AUD
	CADDY	160	2.22%	1,605,732.07 AUD	1.24%	31	215,522.48 AUD	104	1,088,308.75 AUD	25	301,900.84 AUD
	CARAVELLE	2	0.03%	38,277.07 AUD	0.03%	1	1.00 AUD	-	- AUD	1	38,276.07 AUD
	CRAFTER	24	0.33%	491,455.41 AUD	0.38%	3	38,452.27 AUD	20	430,519.61 AUD	1	22,483.53 AUD
	EOS	44	0.61%	811,888.31 AUD	0.63%	5	80,361.92 AUD	9	153,227.59 AUD	30	578,298.80 AUD
	GOLF	1,131	15.71%	16,702,149.33 AUD	12.88%	81	1,045,728.72 AUD	136	2,076,313.96 AUD	914	13,580,106.65 AUD
	JETTA	243	3.38%	2,917,212.55 AUD	2.25%	13	115,858.32 AUD	22	275,374.51 AUD	208	2,525,979.72 AUD
	MULTIVAN	35	0.49%	663,263.83 AUD	0.51%	8	94,044.90 AUD	17	298,808.16 AUD	10	270,410.77 AUD
	NEW BEETLE	21	0.29%	320,140.89 AUD	0.25%	1	1.00 AUD	1	29,948.08 AUD	19	290,191.81 AUD
	PASSAT	271	3.76%	4,680,828.22 AUD	3.61%	35	390,148.16 AUD	61	951,200.84 AUD	175	3,339,479.22 AUD
	POLO	289	4.01%	3,225,661.15 AUD	2.49%	9	80,701.05 AUD	24	220,890.06 AUD	256	2,924,070.04 AUD
	SCIROCCO	21	0.29%	579,186.24 AUD	0.45%	-	- AUD	-	- AUD	21	579,186.24 AUD
	TIGUAN	746	10.36%	9,375,010.33 AUD	7.23%	48	580,000.40 AUD	104	1,486,073.61 AUD	594	7,308,936.32 AUD
	TOUAREG	69	0.96%	2,442,183.26 AUD	1.88%	15	309,055.97 AUD	22	760,897.66 AUD	32	1,372,229.63 AUD
	TRANSPORTER	186	2.58%	2,796,043.53 AUD	2.16%	19	130,756.04 AUD	136	2,128,884.46 AUD	31	536,403.03 AUD
	UP!	30	0.42%	225,474.51 AUD	0.17%	-	- AUD	-	- AUD	30	225,474.51 AUD
	SubTotal	3,815	52.99%	58,294,053.68 AUD	44.97%	303	3,658,836.81 AUD	912	15,230,217.66 AUD	2,600	39,404,999.21 AUD
Volkswagen Group Vehicles	SubTotal	5,579	77.49%	101,968,564.60 AUD	78.66%	575	10,218,853.10 AUD	1,243	24,696,597.20 AUD	3,761	67,053,114.30 AUD

Pool Data VII

Distribution by Vehicle Brand and Models

Total Portfolio						Balloon				Vehicle Status			
Make	Model	Number of Contracts	Percentage of Contracts	Outstanding Discounted Balance	Percentage of Balance	Balloon		No Balloon		New		Used	
						Number of Contracts	Outstanding Discounted Balance	Number of Contracts	Outstanding Discounted Balance	Number of Contracts	Outstanding Discounted Balance	Number of Contracts	Outstanding Discounted Balance
Volkswagen Group Vehicles													
AUDI	A1	176	2.44%	2,208,978.87 AUD	1.70%	86	1,389,192.54 AUD	90	819,786.33 AUD	153	1,960,625.25 AUD	23	248,353.62 AUD
	A3	197	2.74%	3,566,710.56 AUD	2.75%	113	2,668,296.42 AUD	84	898,414.14 AUD	152	3,042,925.84 AUD	45	523,784.72 AUD
	A4	430	5.97%	10,000,397.49 AUD	7.71%	255	7,227,570.97 AUD	175	2,772,826.52 AUD	318	8,416,172.68 AUD	112	1,584,224.81 AUD
	A5	159	2.21%	5,648,899.54 AUD	4.36%	113	4,789,505.00 AUD	46	859,394.54 AUD	129	4,679,842.02 AUD	30	969,057.52 AUD
	A6	50	0.69%	1,662,388.14 AUD	1.28%	35	1,435,248.96 AUD	15	227,139.18 AUD	32	1,220,853.12 AUD	18	441,535.02 AUD
	A7	10	0.14%	655,613.33 AUD	0.51%	7	513,325.01 AUD	3	142,288.32 AUD	8	549,848.92 AUD	2	105,764.41 AUD
	A8	7	0.10%	220,769.97 AUD	0.17%	4	149,992.19 AUD	3	70,777.78 AUD	5	167,686.16 AUD	2	53,083.81 AUD
	Q3	114	1.58%	3,340,206.00 AUD	2.58%	62	2,118,776.10 AUD	52	1,221,429.90 AUD	114	3,340,206.00 AUD	-	- AUD
	Q5	251	3.49%	7,732,005.69 AUD	5.96%	170	6,054,967.49 AUD	81	1,677,038.20 AUD	236	7,329,220.77 AUD	15	402,784.92 AUD
	Q7	124	1.72%	4,484,946.80 AUD	3.46%	85	3,588,905.60 AUD	39	896,041.20 AUD	105	3,941,669.27 AUD	19	543,277.53 AUD
	R8	2	0.03%	249,060.44 AUD	0.19%	2	249,060.44 AUD	-	- AUD	2	249,060.44 AUD	-	- AUD
	TT	39	0.54%	1,129,178.45 AUD	0.87%	25	982,611.42 AUD	14	146,567.03 AUD	27	880,247.36 AUD	12	248,931.09 AUD
	SubTotal	1,559	21.65%	40,899,155.28 AUD	31.55%	957	31,167,452.14 AUD	602	9,731,703.14 AUD	1,281	35,778,357.83 AUD	278	5,120,797.45 AUD
BENTLEY	CONTINENTAL	-	0.00%	- AUD	0.00%	-	-	-	-	-	-	-	-
	MULSAPNE	1	0.01%	265,821.12 AUD	0.21%	1	265,821	-	-	-	-	1	265,821
	SubTotal	1	0.01%	265,821.12 AUD	0.21%	1	265,821.12 AUD	-	- AUD	-	- AUD	1	265,821.12 AUD
LAMBORGHINI	GALLARDO	-	0.00%	- AUD	0.00%	-	- AUD	-	- AUD	-	- AUD	-	- AUD
	SubTotal	-	0.00%	- AUD	0.00%	-	- AUD	-	- AUD	-	- AUD	-	- AUD
PORSCHE	BOXSTER	1	0.01%	40,113.81 AUD	0.03%	1	40,113.81 AUD	-	- AUD	-	- AUD	1	40,113.81 AUD
	CAYENNE	2	0.03%	81,900.84 AUD	0.06%	2	81,900.84 AUD	-	- AUD	1	60,226.49 AUD	1	21,674.35 AUD
	CAYMAN	-	0.00%	- AUD	0.00%	-	- AUD	-	- AUD	-	- AUD	-	- AUD
	SubTotal	3	0.04%	122,014.65 AUD	0.09%	3	122,014.65 AUD	-	- AUD	1	60,226.49 AUD	2	61,788.16 AUD
SKODA	FABIA	12	0.17%	153,531.08 AUD	0.12%	1	15,415.79 AUD	11	138,115.29 AUD	12	153,531.08 AUD	-	- AUD
	OCTAVIA	86	1.19%	919,765.65 AUD	0.71%	41	513,143.91 AUD	45	406,621.74 AUD	78	862,121.89 AUD	8	57,643.76 AUD
	ROOMSTER	1	0.01%	13,297.63 AUD	0.01%	-	- AUD	1	13,297.63 AUD	1	13,297.63 AUD	-	- AUD
	SUPERB	40	0.56%	618,603.48 AUD	0.48%	23	441,438.57 AUD	17	177,164.91 AUD	36	579,876.09 AUD	4	38,727.39 AUD
	YETI	62	0.86%	682,322.03 AUD	0.53%	27	382,743.85 AUD	35	299,578.18 AUD	60	658,007.10 AUD	2	24,314.93 AUD
	SubTotal	201	2.79%	2,387,519.87 AUD	1.84%	92	1,352,742.12 AUD	109	1,034,777.75 AUD	187	2,266,833.79 AUD	14	120,686.08 AUD
VOLKSWAGEN	AMAROK	542	7.53%	11,417,082.00 AUD	8.81%	312	7,686,414.46 AUD	230	3,730,667.54 AUD	538	11,346,913.33 AUD	4	70,168.67 AUD
	BORA	1	0.01%	2,464.98 AUD	0.00%	-	- AUD	1	2,464.98 AUD	-	- AUD	1	2,464.98 AUD
	CADDY	160	2.22%	1,605,732.07 AUD	1.24%	66	809,996.82 AUD	94	795,735.25 AUD	152	1,558,842.67 AUD	8	46,889.40 AUD
	CARAVELLE	2	0.03%	38,277.07 AUD	0.03%	-	- AUD	2	38,277.07 AUD	1	1.00 AUD	1	38,276.07 AUD
	CRAFTER	24	0.33%	491,455.41 AUD	0.38%	12	345,693.73 AUD	12	145,761.68 AUD	24	491,455.41 AUD	-	- AUD
	EOS	44	0.61%	811,888.31 AUD	0.63%	16	386,498.97 AUD	28	425,389.34 AUD	32	667,577.38 AUD	12	144,310.93 AUD
	GOLF	1,131	15.71%	16,702,149.33 AUD	12.88%	440	8,217,886.29 AUD	691	8,484,263.04 AUD	1,042	15,539,051.77 AUD	89	1,163,097.56 AUD
	JETTA	243	3.38%	2,917,212.55 AUD	2.25%	84	1,226,382.76 AUD	159	1,690,829.79 AUD	221	2,726,901.91 AUD	22	190,310.64 AUD
	MULTIVAN	35	0.49%	663,263.83 AUD	0.51%	21	418,677.87 AUD	14	244,585.96 AUD	33	643,255.49 AUD	2	20,008.34 AUD
	NEW BEETLE	21	0.29%	320,140.89 AUD	0.25%	5	124,366.00 AUD	16	195,774.89 AUD	16	289,707.13 AUD	5	30,433.76 AUD
	PASSAT	271	3.76%	4,680,828.22 AUD	3.61%	130	2,677,133.51 AUD	141	2,003,694.71 AUD	236	4,281,004.36 AUD	35	399,823.86 AUD
	POLO	289	4.01%	3,225,661.15 AUD	2.49%	51	710,310.07 AUD	238	2,515,351.08 AUD	279	3,149,509.29 AUD	10	76,151.86 AUD
	SCIROCCO	21	0.29%	579,186.24 AUD	0.45%	10	302,498.65 AUD	11	276,687.59 AUD	19	526,945.69 AUD	2	52,240.55 AUD
	TIGUAN	746	10.36%	9,375,010.33 AUD	7.23%	301	5,181,375.15 AUD	445	4,193,635.18 AUD	723	9,081,100.43 AUD	23	293,909.90 AUD
	TOUAREG	69	0.96%	2,442,183.26 AUD	1.88%	39	1,616,357.29 AUD	30	825,825.97 AUD	62	2,221,181.38 AUD	7	221,001.88 AUD
	TRANSPORTER	186	2.58%	2,796,043.53 AUD	2.16%	104	2,049,952.39 AUD	82	746,091.14 AUD	171	2,618,155.05 AUD	15	177,888.48 AUD
	UP!	30	0.42%	225,474.51 AUD	0.17%	5	50,943.85 AUD	25	174,530.66 AUD	30	225,474.51 AUD	-	- AUD
	SubTotal	3,815	52.99%	58,294,053.68 AUD	44.97%	1,596	31,804,487.81 AUD	2,219	26,489,565.87 AUD	3,579	55,367,076.80 AUD	236	2,926,976.88 AUD
Volkswagen Group Vehicles	SubTotal	5,579	77.49%	101,968,564.60 AUD	78.66%	2,649	64,712,517.84 AUD	2,930	37,256,046.76 AUD	5,048	93,472,494.91 AUD	531	8,496,069.69 AUD

Pool Data VII

Distribution by Vehicle Brand and Models

Total Portfolio						Product Type					
Make	Model	Number of Contracts	Percentage of Contracts	Outstanding Discounted Balance	Percentage of Balance	Hire Purchase		Chattel Mortgage		Consumer Loan	
						Number of Contracts	Outstanding Discounted Balance	Number of Contracts	Outstanding Discounted Balance	Number of Contracts	Outstanding Discounted Balance
Other Vehicles											
HOLDEN		422	5.86%	5,936,339.81 AUD	4.58%	16	208,122.43 AUD	105	1,597,126.60 AUD	301	4,131,090.78 AUD
LAND ROVER		136	1.89%	4,611,124.96 AUD	3.56%	16	528,147.42 AUD	40	1,302,222.09 AUD	80	2,780,755.45 AUD
SUBARU		231	3.21%	4,783,285.94 AUD	3.69%	7	44,617.30 AUD	23	360,748.01 AUD	201	4,377,920.63 AUD
NISSAN		117	1.63%	1,850,649.98 AUD	1.43%	10	72,046.60 AUD	51	897,325.02 AUD	56	881,278.36 AUD
FORD		126	1.75%	1,638,587.30 AUD	1.26%	10	56,992.05 AUD	49	667,251.01 AUD	67	914,344.24 AUD
MERCEDES-BENZ		29	0.40%	607,200.95 AUD	0.47%	5	121,096.69 AUD	8	128,311.87 AUD	16	357,792.39 AUD
TOYOTA		64	0.89%	708,394.49 AUD	0.55%	12	83,005.87 AUD	21	274,202.14 AUD	31	351,186.48 AUD
BMW		31	0.43%	679,015.48 AUD	0.52%	3	40,600.00 AUD	4	59,086.90 AUD	24	579,328.58 AUD
HONDA		71	0.99%	744,975.14 AUD	0.57%	4	6,326.32 AUD	10	117,966.36 AUD	57	620,682.46 AUD
VOLVO		23	0.32%	413,202.03 AUD	0.32%	1	21,772.25 AUD	6	121,264.89 AUD	16	270,164.89 AUD
SUZUKI		87	1.21%	837,495.98 AUD	0.65%	2	282.80 AUD	18	141,755.67 AUD	67	695,457.51 AUD
JAGUAR		14	0.19%	543,741.63 AUD	0.42%	2	16,209.58 AUD	4	144,989.67 AUD	8	382,542.38 AUD
KIA		54	0.75%	848,896.04 AUD	0.65%	1	18,380.23 AUD	13	205,191.88 AUD	40	625,323.93 AUD
MAZDA		38	0.53%	458,093.24 AUD	0.35%	1	2,767.42 AUD	4	46,746.10 AUD	33	408,579.72 AUD
MITSUBISHI		30	0.42%	413,386.30 AUD	0.32%	5	60,486.81 AUD	8	116,730.56 AUD	17	236,168.93 AUD
RENAULT		39	0.54%	637,006.73 AUD	0.49%	-	- AUD	9	106,343.75 AUD	30	530,662.98 AUD
LEXUS		15	0.21%	249,045.65 AUD	0.19%	3	60,576.53 AUD	1	2,940.92 AUD	11	185,528.20 AUD
JEEP		13	0.18%	252,758.50 AUD	0.19%	1	41,039.07 AUD	6	109,489.49 AUD	6	102,229.94 AUD
MASERATI		1	0.01%	188,744.46 AUD	0.15%	-	- AUD	-	- AUD	1	188,744.46 AUD
HYUNDAI		15	0.21%	215,103.40 AUD	0.17%	1	10,991.71 AUD	5	55,263.07 AUD	9	148,848.62 AUD
ASTON MARTIN		1	0.01%	195,659.17 AUD	0.15%	-	- AUD	-	- AUD	1	195,659.17 AUD
PEUGEOT		10	0.14%	89,904.35 AUD	0.07%	-	- AUD	4	41,217.66 AUD	6	48,686.69 AUD
ISUZU		5	0.07%	127,552.97 AUD	0.10%	-	- AUD	2	44,545.02 AUD	3	83,007.95 AUD
ALFA ROMEO		6	0.08%	73,815.31 AUD	0.06%	1	9,050.96 AUD	-	- AUD	5	64,764.35 AUD
OPEL		10	0.14%	170,347.19 AUD	0.13%	-	- AUD	1	20,265.17 AUD	9	150,082.02 AUD
FERRARI		-	0.00%	- AUD	0.00%	-	- AUD	-	- AUD	-	- AUD
GREAT WALL		10	0.14%	99,380.65 AUD	0.08%	-	- AUD	7	61,723.28 AUD	3	37,657.37 AUD
FIAT		3	0.04%	21,269.84 AUD	0.02%	1	469.90 AUD	-	- AUD	2	20,799.94 AUD
SSANGYONG		6	0.08%	62,012.37 AUD	0.05%	-	- AUD	1	16,233.40 AUD	5	45,778.97 AUD
MINI		5	0.07%	78,073.63 AUD	0.06%	-	- AUD	-	- AUD	5	78,073.63 AUD
CITROEN		1	0.01%	22,649.52 AUD	0.02%	-	- AUD	-	- AUD	1	22,649.52 AUD
DODGE		4	0.06%	49,424.82 AUD	0.04%	1	17,248.50 AUD	2	13,165.91 AUD	1	19,010.41 AUD
LOTUS		1	0.01%	32,666.50 AUD	0.03%	-	- AUD	-	- AUD	1	32,666.50 AUD
HUMMER		1	0.01%	8,410.46 AUD	0.01%	-	- AUD	-	- AUD	1	8,410.46 AUD
CHRYSLER		1	0.01%	6,665.86 AUD	0.01%	-	- AUD	-	- AUD	1	6,665.86 AUD
SAAB		-	0.00%	- AUD	0.00%	-	- AUD	-	- AUD	-	- AUD
CHERY		1	0.01%	9,197.98 AUD	0.01%	-	- AUD	-	- AUD	1	9,197.98 AUD
Other Vehicles	SubTotal	1,621	22.51%	27,664,078.63 AUD	21.34%	103	1,420,230.44 AUD	402	6,652,106.44 AUD	1,116	19,591,741.75 AUD
Total		7,200	100.00%	129,632,643.23 AUD	100.00%	678	11,639,083.54 AUD	1,645	31,348,703.64 AUD	4,877	86,644,856.05 AUD

Pool Data VII

Distribution by Vehicle Brand and Models

Total Portfolio						Balloon				Vehicle Status			
Make	Model	Number of Contracts	Percentage of Contracts	Outstanding Discounted Balance	Percentage of Balance	Balloon		No Balloon		New		Used	
						Number of Contracts	Outstanding Discounted Balance	Number of Contracts	Outstanding Discounted Balance	Number of Contracts	Outstanding Discounted Balance	Number of Contracts	Outstanding Discounted Balance
Other Vehicles													
HOLDEN		422	5.86%	5,936,339.81 AUD	4.58%	100	1,964,081.65 AUD	322	3,972,258.16 AUD	320	4,851,831.37 AUD	102	1,084,508.44 AUD
LAND ROVER		136	1.89%	4,611,124.96 AUD	3.56%	91	3,586,692.36 AUD	45	1,024,432.60 AUD	118	4,144,934.33 AUD	18	466,190.63 AUD
SUBARU		231	3.21%	4,783,285.94 AUD	3.69%	45	1,024,367.48 AUD	186	3,758,918.46 AUD	192	4,232,503.06 AUD	39	550,782.88 AUD
NISSAN		117	1.63%	1,850,649.98 AUD	1.43%	44	940,384.23 AUD	73	910,265.75 AUD	89	1,464,493.65 AUD	28	386,156.33 AUD
FORD		126	1.75%	1,638,587.30 AUD	1.26%	39	651,883.65 AUD	87	986,703.65 AUD	89	1,279,929.44 AUD	37	358,657.86 AUD
MERCEDES-BENZ		29	0.40%	607,200.95 AUD	0.47%	13	368,883.37 AUD	16	238,317.58 AUD	6	223,344.51 AUD	23	383,856.44 AUD
TOYOTA		64	0.89%	708,394.49 AUD	0.55%	20	291,070.66 AUD	44	417,323.83 AUD	25	354,298.84 AUD	39	354,095.65 AUD
BMW		31	0.43%	679,015.48 AUD	0.52%	4	109,225.00 AUD	27	569,790.48 AUD	3	135,787.49 AUD	28	543,227.99 AUD
HONDA		71	0.99%	744,975.14 AUD	0.57%	8	113,824.57 AUD	63	631,150.57 AUD	45	498,465.20 AUD	26	246,509.94 AUD
VOLVO		23	0.32%	413,202.03 AUD	0.32%	9	247,111.91 AUD	14	166,090.12 AUD	14	305,024.90 AUD	9	108,177.13 AUD
SUZUKI		87	1.21%	837,495.98 AUD	0.65%	10	142,213.71 AUD	77	695,282.27 AUD	78	759,762.12 AUD	9	77,733.86 AUD
JAGUAR		14	0.19%	543,741.63 AUD	0.42%	8	331,903.95 AUD	6	211,837.68 AUD	11	474,604.98 AUD	3	69,136.65 AUD
KIA		54	0.75%	848,896.04 AUD	0.65%	9	207,427.02 AUD	45	641,469.02 AUD	49	803,633.26 AUD	5	45,262.78 AUD
MAZDA		38	0.53%	458,093.24 AUD	0.35%	9	181,934.53 AUD	29	276,158.71 AUD	18	271,565.28 AUD	20	186,527.96 AUD
MITSUBISHI		30	0.42%	413,386.30 AUD	0.32%	5	104,255.37 AUD	25	309,130.93 AUD	17	251,093.88 AUD	13	162,292.42 AUD
RENAULT		39	0.54%	637,006.73 AUD	0.49%	9	199,758.59 AUD	30	437,248.14 AUD	26	477,683.58 AUD	13	159,323.15 AUD
LEXUS		15	0.21%	249,045.65 AUD	0.19%	5	118,945.18 AUD	10	130,100.47 AUD	1	16,682.04 AUD	14	232,363.61 AUD
JEEP		13	0.18%	252,758.50 AUD	0.19%	4	120,092.58 AUD	9	132,665.92 AUD	9	173,696.72 AUD	4	79,061.78 AUD
MASERATI		1	0.01%	188,744.46 AUD	0.15%	1	188,744.46 AUD	-	- AUD	1	188,744.46 AUD	-	- AUD
HYUNDAI		15	0.21%	215,103.40 AUD	0.17%	5	84,434.41 AUD	10	130,668.99 AUD	10	135,070.19 AUD	5	80,033.21 AUD
ASTON MARTIN		1	0.01%	195,659.17 AUD	0.15%	1	195,659.17 AUD	-	- AUD	1	195,659.17 AUD	-	- AUD
PEUGEOT		10	0.14%	89,904.35 AUD	0.07%	7	63,261.53 AUD	3	26,642.82 AUD	4	36,424.02 AUD	6	53,480.33 AUD
ISUZU		5	0.07%	127,552.97 AUD	0.10%	2	44,545.02 AUD	3	83,007.95 AUD	5	127,552.97 AUD	-	- AUD
ALFA ROMEO		6	0.08%	73,815.31 AUD	0.06%	2	30,861.89 AUD	4	42,953.42 AUD	3	39,912.85 AUD	3	33,902.46 AUD
OPEL		10	0.14%	170,347.19 AUD	0.13%	2	36,365.56 AUD	8	133,981.63 AUD	10	170,347.19 AUD	-	- AUD
FERRARI		-	0.00%	- AUD	0.00%	-	- AUD	-	- AUD	-	- AUD	-	- AUD
GREAT WALL		10	0.14%	99,380.65 AUD	0.08%	3	25,144.50 AUD	7	74,236.15 AUD	8	87,119.87 AUD	2	12,260.78 AUD
FIAT		3	0.04%	21,269.84 AUD	0.02%	1	17,813.25 AUD	2	3,456.59 AUD	2	20,799.94 AUD	1	469.90 AUD
SSANGYONG		6	0.08%	62,012.37 AUD	0.05%	1	16,233.40 AUD	5	45,778.97 AUD	4	56,620.35 AUD	2	5,392.02 AUD
MINI		5	0.07%	78,073.63 AUD	0.06%	-	- AUD	5	78,073.63 AUD	-	- AUD	5	78,073.63 AUD
CITROEN		1	0.01%	22,649.52 AUD	0.02%	1	22,649.52 AUD	-	- AUD	1	22,649.52 AUD	-	- AUD
DODGE		4	0.06%	49,424.82 AUD	0.04%	1	17,248.50 AUD	3	32,176.32 AUD	-	- AUD	4	49,424.82 AUD
LOTUS		1	0.01%	32,666.50 AUD	0.03%	1	32,666.50 AUD	-	- AUD	1	32,666.50 AUD	-	- AUD
HUMMER		1	0.01%	8,410.46 AUD	0.01%	-	- AUD	1	8,410.46 AUD	-	- AUD	1	8,410.46 AUD
CHRYSLER		1	0.01%	6,665.86 AUD	0.01%	-	- AUD	1	6,665.86 AUD	-	- AUD	1	6,665.86 AUD
SAAB		-	0.00%	- AUD	0.00%	-	- AUD	-	- AUD	-	- AUD	-	- AUD
CHERY		1	0.01%	9,197.98 AUD	0.01%	-	- AUD	1	9,197.98 AUD	1	9,197.98 AUD	-	- AUD
Other Vehicles	SubTotal	1,621	22.51%	27,664,078.63 AUD	21.34%	460	11,479,683.52 AUD	1,161	16,184,395.11 AUD	1,161	21,842,099.66 AUD	460	5,821,978.97 AUD
Total		7,200	100.00%	129,632,643.23 AUD	100.00%	3,109	76,192,201.36 AUD	4,091	53,440,441.87 AUD	6,209	115,314,594.57 AUD	991	14,318,048.66 AUD

## Pool Data VIII

### Region

Total Portfolio					Product Type					
					Hire Purchase		Chattel Mortgage		Consumer Loan	
Region	Number of Contracts	Percentage of Contracts	Outstanding Discounted Balance	Percentage of Balance	Number of Contracts	Outstanding Discounted Balance	Number of Contracts	Outstanding Discounted Balance	Number of Contracts	Outstanding Discounted Balance
Australian Capital Territory	224	3.11%	3,669,451.81 AUD	2.83%	20	205,210.13 AUD	45	936,661.13 AUD	159	2,527,580.55 AUD
New South Wales	3,006	41.75%	56,376,913.04 AUD	43.49%	467	8,419,076.94 AUD	634	12,388,376.98 AUD	1,905	35,569,459.12 AUD
Northern Territory	25	0.35%	543,780.33 AUD	0.42%	-	- AUD	6	164,380.02 AUD	19	379,400.31 AUD
Queensland	1,044	14.50%	19,883,813.90 AUD	15.34%	36	704,513.67 AUD	248	4,582,826.67 AUD	760	14,596,473.56 AUD
South Australia	323	4.49%	6,712,880.86 AUD	5.18%	6	79,169.34 AUD	115	2,647,720.85 AUD	202	3,985,990.67 AUD
Tasmania	14	0.19%	175,052.10 AUD	0.14%	1	2,591.41 AUD	3	28,701.79 AUD	10	143,758.90 AUD
Victoria	2,072	28.78%	32,396,563.80 AUD	24.99%	141	2,089,046.49 AUD	494	8,080,628.44 AUD	1,437	22,226,888.87 AUD
Western Australia	492	6.83%	9,874,187.39 AUD	7.62%	7	139,475.56 AUD	100	2,519,407.76 AUD	385	7,215,304.07 AUD
<b>Total</b>	<b>7,200</b>	<b>100.00%</b>	<b>129,632,643.23 AUD</b>	<b>100.00%</b>	<b>678</b>	<b>11,639,083.54 AUD</b>	<b>1,645</b>	<b>31,348,703.64 AUD</b>	<b>4,877</b>	<b>86,644,856.05 AUD</b>

## Pool Data VIII

### Region

Total Portfolio					Balloon				Vehicle Status			
Region	Number of Contracts	Percentage of Contracts	Outstanding Discounted Balance	Percentage of Balance	Balloon		No Balloon		New		Used	
					Number of Contracts	Outstanding Discounted Balance	Number of Contracts	Outstanding Discounted Balance	Number of Contracts	Outstanding Discounted Balance	Number of Contracts	Outstanding Discounted Balance
Australian Capital Territory	224	3.11%	3,669,451.81 AUD	2.83%	68	1,610,330.55 AUD	156	2,059,121.26 AUD	187	3,307,431.78 AUD	37	362,020.03 AUD
New South Wales	3,006	41.75%	56,376,913.04 AUD	43.49%	1,388	34,861,319.67 AUD	1,618	21,515,593.37 AUD	2,519	49,073,195.99 AUD	487	7,303,717.05 AUD
Northern Territory	25	0.35%	543,780.33 AUD	0.42%	12	311,748.80 AUD	13	232,031.53 AUD	24	531,019.58 AUD	1	12,760.75 AUD
Queensland	1,044	14.50%	19,883,813.90 AUD	15.34%	461	11,845,226.60 AUD	583	8,038,587.30 AUD	945	18,119,090.71 AUD	99	1,764,723.19 AUD
South Australia	323	4.49%	6,712,880.86 AUD	5.18%	150	4,380,714.40 AUD	173	2,332,166.46 AUD	289	6,261,518.82 AUD	34	451,362.04 AUD
Tasmania	14	0.19%	175,052.10 AUD	0.14%	5	81,017.66 AUD	9	94,034.44 AUD	12	158,675.60 AUD	2	16,376.50 AUD
Victoria	2,072	28.78%	32,396,563.80 AUD	24.99%	820	16,930,784.48 AUD	1,252	15,465,779.32 AUD	1,811	29,306,790.73 AUD	261	3,089,773.07 AUD
Western Australia	492	6.83%	9,874,187.39 AUD	7.62%	205	6,171,059.20 AUD	287	3,703,128.19 AUD	422	8,556,871.36 AUD	70	1,317,316.03 AUD
<b>Total</b>	<b>7,200</b>	<b>100.00%</b>	<b>129,632,643.23 AUD</b>	<b>100.00%</b>	<b>3,109</b>	<b>76,192,201.36 AUD</b>	<b>4,091</b>	<b>53,440,441.87 AUD</b>	<b>6,209</b>	<b>115,314,594.57 AUD</b>	<b>991</b>	<b>14,318,048.66 AUD</b>



#### Individual Hardship Extensions\*

Individual Extensions Approved For After Poolcut*	Number of Contracts	Percentage of Contracts	Outstanding Discounted Principal Balance	Percentage of Balance
None	7,133	99.07%	127,989,123.50 AUD	98.73%
1	64	0.89%	1,513,225.93 AUD	1.17%
2	1	0.01%	62,605.42 AUD	0.05%
3	2	0.03%	67,688.38 AUD	0.05%
<b>Total</b>	<b>7,200</b>	<b>100.00%</b>	<b>129,632,643.23 AUD</b>	<b>100.00%</b>

\*Individual Hardship Extensions Approved For After Poolcut For Contracts Active At End of Reporting Period

## Engine Type

Total Portfolio					Product Type					
					Hire Purchase		Chattel Mortgage		Consumer Loan	
Engine Type	Number of Contracts	Percentage of Contracts	Outstanding Discounted Balance	Percentage of Balance	Number of Contracts	Outstanding Discounted Balance	Number of Contracts	Outstanding Discounted Balance	Number of Contracts	Outstanding Discounted Balance
EA 189	1,257	17.46%	20,529,925.19 AUD	15.84%	134	1,975,297.22 AUD	386	6,169,300.64 AUD	737	12,385,327.33 AUD
Other	5,943	82.54%	109,102,718.04 AUD	84.16%	544	9,663,786.32 AUD	1,259	25,179,403.00 AUD	4,140	74,259,528.72 AUD
<b>Total</b>	<b>7,200</b>	<b>100.00%</b>	<b>129,632,643.23 AUD</b>	<b>100.00%</b>	<b>678</b>	<b>11,639,083.54 AUD</b>	<b>1,645</b>	<b>31,348,703.64 AUD</b>	<b>4,877</b>	<b>86,644,856.05 AUD</b>

Engine Type

Total Portfolio					Balloon				Vehicle Status			
Engine Type	Number of Contracts	Percentage of Contracts	Outstanding Discounted Balance	Percentage of Balance	Balloon		No Balloon		New		Used	
					Number of Contracts	Outstanding Discounted Balance	Number of Contracts	Outstanding Discounted Balance	Number of Contracts	Outstanding Discounted Balance	Number of Contracts	Outstanding Discounted Balance
EA 189	1,257	17.46%	20,529,925.19 AUD	15.84%	613	12,959,001.34 AUD	644	7,570,923.85 AUD	1,183	19,493,728.53 AUD	74	1,036,196.66 AUD
Other	5,943	82.54%	109,102,718.04 AUD	84.16%	2,496	63,233,200.02 AUD	3,447	45,869,518.02 AUD	5,026	95,820,866.04 AUD	917	13,281,852.00 AUD
<b>Total</b>	<b>7,200</b>	<b>100.00%</b>	<b>129,632,643.23 AUD</b>	<b>100.00%</b>	<b>3,109</b>	<b>76,192,201.36 AUD</b>	<b>4,091</b>	<b>53,440,441.87 AUD</b>	<b>6,209</b>	<b>115,314,594.57 AUD</b>	<b>991</b>	<b>14,318,048.66 AUD</b>

Contract Level Data

Net Salvage Recoveries By Contract By Month

No.	Month / Year of Origination	Month / Year of Net Salvage	Outstanding Discounted Principal Balance at Poolcut	ABS Gross Salvage Loss	ABS Net Salvage Loss	ABS Recoveries After Net Salvage	ABS Net Salvage Loss After Recoveries	Loss Percentage on Poolcut Balance	Geographical Location of Borrower	Vehicle Type (New/Used)	Vehicle Manufacturer	Product Type
1	03/2013	01/2014	17,834.84 AUD	17,988.83 AUD	13,196.74 AUD	1,815.92 AUD	11,380.82 AUD	63.81%	Queensland	New	VOLKSWAGEN	Chattel Mortgage
2	08/2013	01/2014	16,963.32 AUD	16,294.09 AUD	13,508.04 AUD	467.88 AUD	13,040.16 AUD	76.87%	Northern Territory	Used	MITSUBISHI	Consumer Loan
3	01/2012	02/2014	32,104.79 AUD	32,381.08 AUD	16,558.04 AUD	(198.54) AUD	16,756.58 AUD	52.19%	New South Wales	New	FORD	Chattel Mortgage
4	04/2013	02/2014	14,402.40 AUD	14,584.67 AUD	7,922.78 AUD	- AUD	7,922.78 AUD	55.01%	Western Australia	Used	VOLKSWAGEN	Consumer Loan
5	09/2011	04/2014	56,523.70 AUD	54,000.02 AUD	31,527.23 AUD	464.37 AUD	31,062.86 AUD	54.96%	Queensland	New	VOLKSWAGEN	Chattel Mortgage
6	02/2009	06/2014	26,327.68 AUD	25,000.00 AUD	13,543.92 AUD	- AUD	13,543.92 AUD	51.44%	Victoria	Used	AUDI	Hire Purchase
7	09/2010	06/2014	12,100.57 AUD	10,687.19 AUD	5,236.55 AUD	- AUD	5,236.55 AUD	43.28%	Victoria	Used	HOLDEN	Hire Purchase
8	07/2011	06/2014	8,765.16 AUD	7,580.93 AUD	4,138.89 AUD	- AUD	4,138.89 AUD	47.22%	Queensland	Used	HOLDEN	Chattel Mortgage
9	08/2013	06/2014	30,463.63 AUD	26,211.36 AUD	11,672.91 AUD	- AUD	11,672.91 AUD	38.32%	Victoria	New	VOLKSWAGEN	Chattel Mortgage
10	12/2010	07/2014	35,677.22 AUD	31,679.40 AUD	20,908.65 AUD	- AUD	20,908.65 AUD	58.61%	South Australia	New	VOLKSWAGEN	Chattel Mortgage
11	01/2011	07/2014	29,114.43 AUD	25,422.37 AUD	9,578.33 AUD	81.12 AUD	9,497.21 AUD	32.62%	Queensland	New	VOLKSWAGEN	Chattel Mortgage
12	06/2011	07/2014	133,381.34 AUD	127,007.74 AUD	53,568.69 AUD	- AUD	53,568.69 AUD	40.16%	New South Wales	New	AUDI	Hire Purchase
13	08/2011	07/2014	21,241.85 AUD	18,468.33 AUD	4,143.24 AUD	587.06 AUD	3,556.18 AUD	16.74%	Queensland	Used	VOLKSWAGEN	Chattel Mortgage
14	10/2011	07/2014	42,613.24 AUD	42,950.34 AUD	43,105.65 AUD	18,216.50 AUD	24,889.15 AUD	58.41%	Queensland	New	FORD	Chattel Mortgage
15	09/2012	07/2014	45,178.26 AUD	42,089.98 AUD	12,271.19 AUD	- AUD	12,271.19 AUD	27.16%	Queensland	New	VOLKSWAGEN	Consumer Loan
16	02/2013	07/2014	47,321.60 AUD	45,583.12 AUD	14,822.59 AUD	- AUD	14,822.59 AUD	31.32%	New South Wales	New	VOLKSWAGEN	Consumer Loan
17	05/2009	08/2014	18,217.51 AUD	596.63 AUD	596.63 AUD	- AUD	596.63 AUD	3.28%	Victoria	New	VOLKSWAGEN	Consumer Loan
18	03/2010	08/2014	34,828.22 AUD	33,641.26 AUD	15,570.66 AUD	351.36 AUD	15,219.30 AUD	43.70%	Queensland	New	AUDI	Chattel Mortgage
19	04/2011	08/2014	32,166.13 AUD	26,446.12 AUD	14,367.87 AUD	- AUD	14,367.87 AUD	44.67%	Australian Capital Territory	New	SKODA	Chattel Mortgage
20	07/2013	08/2014	31,502.29 AUD	27,657.29 AUD	16,858.37 AUD	2,708.08 AUD	14,150.29 AUD	44.92%	Australian Capital Territory	Used	NISSAN	Consumer Loan
21	06/2011	09/2014	38,525.82 AUD	35,436.55 AUD	20,377.33 AUD	- AUD	20,377.33 AUD	52.89%	New South Wales	Used	VOLKSWAGEN	Hire Purchase
22	12/2011	09/2014	89,606.44 AUD	83,188.16 AUD	34,368.87 AUD	509.22 AUD	33,859.65 AUD	37.79%	New South Wales	New	AUDI	Chattel Mortgage
23	03/2013	09/2014	26,108.36 AUD	22,162.30 AUD	10,350.90 AUD	1,281.03 AUD	9,069.87 AUD	34.74%	Western Australia	Used	AUDI	Consumer Loan
24	06/2009	10/2014	10,761.50 AUD	8,124.11 AUD	582.61 AUD	- AUD	582.61 AUD	5.41%	Queensland	New	FORD	Chattel Mortgage
25	07/2010	10/2014	82,960.04 AUD	62,690.40 AUD	30,627.90 AUD	5,671.56 AUD	24,956.34 AUD	30.08%	New South Wales	New	AUDI	Hire Purchase
26	10/2012	10/2014	47,184.39 AUD	43,766.04 AUD	10,322.56 AUD	- AUD	10,322.56 AUD	21.88%	New South Wales	New	AUDI	Chattel Mortgage
27	11/2011	11/2014	27,724.97 AUD	22,938.50 AUD	8,897.92 AUD	1,341.68 AUD	7,556.24 AUD	27.25%	Victoria	New	HOLDEN	Chattel Mortgage
28	03/2012	11/2014	30,897.20 AUD	23,042.88 AUD	6,716.01 AUD	- AUD	6,716.01 AUD	21.74%	Queensland	New	VOLKSWAGEN	Consumer Loan
29	07/2011	12/2014	49,653.35 AUD	42,677.21 AUD	22,130.15 AUD	- AUD	22,130.15 AUD	44.57%	Victoria	New	VOLKSWAGEN	Hire Purchase
30	06/2013	12/2014	42,634.46 AUD	39,041.67 AUD	13,460.14 AUD	- AUD	13,460.14 AUD	31.57%	Western Australia	Used	AUDI	Consumer Loan
31	07/2013	12/2014	53,564.03 AUD	47,253.73 AUD	19,527.02 AUD	- AUD	19,527.02 AUD	36.46%	Australian Capital Territory	New	VOLKSWAGEN	Consumer Loan
32	06/2009	01/2015	6,671.30 AUD	682.82 AUD	682.82 AUD	- AUD	682.82 AUD	10.24%	New South Wales	Used	HOLDEN	Chattel Mortgage
33	01/2011	01/2015	31,314.00 AUD	24,718.69 AUD	11,514.90 AUD	283.74 AUD	11,231.16 AUD	35.87%	Queensland	New	ISUZU	Chattel Mortgage
34	07/2011	01/2015	39,184.21 AUD	25,512.74 AUD	25,512.74 AUD	18,718.23 AUD	6,794.51 AUD	17.34%	New South Wales	New	VOLKSWAGEN	Chattel Mortgage
35	08/2011	01/2015	27,479.97 AUD	20,000.00 AUD	- AUD	- AUD	- AUD	0.00%	South Australia	New	AUDI	Chattel Mortgage
36	09/2009	02/2015	6,120.92 AUD	2,284.56 AUD	2,284.56 AUD	- AUD	2,284.56 AUD	37.32%	New South Wales	Used	HONDA	Consumer Loan
37	10/2009	03/2015	15,311.59 AUD	554.67 AUD	554.67 AUD	- AUD	554.67 AUD	3.62%	Victoria	New	VOLKSWAGEN	Chattel Mortgage
38	10/2009	03/2015	11,027.06 AUD	345.43 AUD	345.43 AUD	360.00 AUD	(14.57) AUD	-0.13%	Western Australia	Used	MITSUBISHI	Chattel Mortgage
39	11/2009	03/2015	26,738.26 AUD	15,687.90 AUD	1,279.90 AUD	- AUD	1,279.90 AUD	4.79%	Queensland	New	VOLKSWAGEN	Chattel Mortgage
40	12/2009	03/2015	6,659.29 AUD	1,474.04 AUD	1,474.04 AUD	- AUD	1,474.04 AUD	22.14%	Victoria	New	FORD	Consumer Loan
41	05/2010	03/2015	53,827.31 AUD	41,503.36 AUD	15,840.30 AUD	(1,151.19) AUD	16,991.49 AUD	31.57%	New South Wales	New	AUDI	Hire Purchase
42	02/2011	03/2015	17,786.48 AUD	13,324.33 AUD	6,580.55 AUD	- AUD	6,580.55 AUD	37.00%	Australian Capital Territory	Used	VOLKSWAGEN	Chattel Mortgage
43	07/2012	03/2015	42,099.11 AUD	32,193.27 AUD	6,911.80 AUD	328.63 AUD	6,583.17 AUD	15.64%	South Australia	New	VOLKSWAGEN	Consumer Loan
44	06/2013	03/2015	66,768.22 AUD	61,394.36 AUD	33,762.03 AUD	12,272.72 AUD	21,489.31 AUD	32.18%	New South Wales	Used	AUDI	Consumer Loan
45	08/2013	03/2015	71,634.19 AUD	66,870.85 AUD	67,130.40 AUD	31,232.77 AUD	35,897.63 AUD	50.11%	Queensland	Used	AUDI	Consumer Loan
46	11/2011	04/2015	18,648.07 AUD	357.08 AUD	357.08 AUD	- AUD	357.08 AUD	1.91%	New South Wales	New	VOLKSWAGEN	Hire Purchase
47	03/2013	04/2015	19,942.54 AUD	15,727.73 AUD	6,188.55 AUD	- AUD	6,188.55 AUD	31.03%	Victoria	Used	HOLDEN	Chattel Mortgage
48	12/2009	05/2015	28,697.20 AUD	5,764.28 AUD	5,764.28 AUD	- AUD	5,764.28 AUD	20.09%	Victoria	New	MAZDA	Chattel Mortgage
49	01/2010	05/2015	30,529.93 AUD	7,713.04 AUD	7,713.04 AUD	- AUD	7,713.04 AUD	25.26%	Queensland	New	HOLDEN	Hire Purchase
50	08/2011	05/2015	17,797.36 AUD	11,748.91 AUD	11,748.91 AUD	- AUD	11,748.91 AUD	66.01%	New South Wales	New	GREAT WALL	Chattel Mortgage
51	09/2011	05/2015	43,590.44 AUD	35,489.66 AUD	19,599.90 AUD	282.03 AUD	19,317.87 AUD	44.32%	New South Wales	New	AUDI	Hire Purchase
52	10/2011	05/2015	49,475.31 AUD	41,754.73 AUD	41,754.73 AUD	(260.67) AUD	42,015.40 AUD	84.92%	Victoria	New	VOLKSWAGEN	Chattel Mortgage
53	11/2012	05/2015	59,243.76 AUD	28,939.20 AUD	28,939.20 AUD	1,870.12 AUD	27,069.08 AUD	45.69%	Australian Capital Territory	New	VOLKSWAGEN	Chattel Mortgage
54	03/2013	05/2015	35,434.87 AUD	16,717.00 AUD	16,717.00 AUD	(566.00) AUD	17,283.00 AUD	48.77%	Queensland	New	VOLKSWAGEN	Consumer Loan
55	04/2013	05/2015	27,366.29 AUD	24,589.43 AUD	24,589.43 AUD	(487.31) AUD	25,076.74 AUD	91.63%	Victoria	New	VOLKSWAGEN	Consumer Loan
56	02/2010	06/2015	9,387.82 AUD	1,546.63 AUD	1,546.63 AUD	90.91 AUD	1,455.72 AUD	15.51%	New South Wales	Used	VOLKSWAGEN	Hire Purchase
57	05/2011	06/2015	10,801.15 AUD	1,115.49 AUD	1,115.49 AUD	- AUD	1,115.49 AUD	10.33%	New South Wales	New	NISSAN	Consumer Loan
58	12/2011	06/2015	51,058.79 AUD	42,686.49 AUD	42,686.49 AUD	418.60 AUD	42,267.89 AUD	82.78%	Victoria	New	VOLKSWAGEN	Chattel Mortgage
59	03/2011	07/2015	30,609.06 AUD	- AUD	- AUD	- AUD	- AUD	0.00%	South Australia	New	HOLDEN	Chattel Mortgage
60	04/2011	07/2015	35,606.18 AUD	14,748.57 AUD	14,748.57 AUD	- AUD	14,748.57 AUD	41.42%	Queensland	New	VOLKSWAGEN	Chattel Mortgage
61	10/2011	07/2015	24,411.44 AUD	10,316.78 AUD	10,316.78 AUD	2,072.78 AUD	8,244.00 AUD	33.77%	Victoria	New	VOLKSWAGEN	Chattel Mortgage
62	10/2011	07/2015	39,846.08 AUD	10,843.15 AUD	10,843.15 AUD	- AUD	10,843.15 AUD	27.21%	Queensland	New	VOLKSWAGEN	Chattel Mortgage

## Contract Level Data

## Net Salvage Recoveries By Contract By Month

No.	Month / Year of Origination	Month / Year of Net Salvage	Outstanding Discounted Principal Balance at Poolcut	ABS Gross Salvage Loss	ABS Net Salvage Loss	ABS Recoveries After Net Salvage	ABS Net Salvage Loss After Recoveries	Loss Percentage on Poolcut Balance	Geographical Location of Borrower	Vehicle Type (New/Used)	Vehicle Manufacturer	Product Type
63	06/2012	07/2015	47,433.14 AUD	24,628.37 AUD	24,628.37 AUD	- AUD	24,628.37 AUD	51.92%	Queensland	New	PEUGEOT	Consumer Loan
64	05/2010	08/2015	10,688.76 AUD	325.58 AUD	325.58 AUD	- AUD	325.58 AUD	3.05%	Victoria	Used	HOLDEN	Hire Purchase
65	09/2012	08/2015	19,592.69 AUD	10,089.07 AUD	10,089.07 AUD	280.83 AUD	9,808.24 AUD	50.06%	New South Wales	New	FORD	Consumer Loan
66	02/2013	08/2015	27,581.17 AUD	1,403.05 AUD	1,403.05 AUD	- AUD	1,403.05 AUD	5.09%	Victoria	New	VOLKSWAGEN	Chattel Mortgage
67	05/2011	09/2015	43,936.38 AUD	13,628.65 AUD	13,628.65 AUD	- AUD	13,628.65 AUD	31.02%	New South Wales	New	AUDI	Hire Purchase
68	05/2011	09/2015	28,456.86 AUD	2,328.19 AUD	2,328.19 AUD	- AUD	2,328.19 AUD	8.18%	Victoria	Used	HOLDEN	Chattel Mortgage
69	11/2012	09/2015	23,908.34 AUD	13,033.38 AUD	13,033.38 AUD	551.84 AUD	12,481.54 AUD	52.21%	Queensland	Used	VOLKSWAGEN	Consumer Loan
70	12/2010	10/2015	23,904.86 AUD	9,813.30 AUD	9,813.30 AUD	- AUD	9,813.30 AUD	41.05%	Victoria	New	HOLDEN	Chattel Mortgage
71	07/2012	10/2015	37,680.54 AUD	16,077.37 AUD	16,077.37 AUD	- AUD	16,077.37 AUD	42.67%	New South Wales	New	SUBARU	Chattel Mortgage
72	01/2013	11/2015	42,795.25 AUD	14,875.94 AUD	14,875.94 AUD	- AUD	14,875.94 AUD	34.76%	New South Wales	New	MITSUBISHI	Consumer Loan
73	08/2013	11/2015	11,734.53 AUD	490.56 AUD	490.56 AUD	- AUD	490.56 AUD	4.18%	Western Australia	Used	AUDI	Consumer Loan
<b>Total</b>	<b>73</b>		<b>4,199,020.41 AUD</b>	<b>1,739,890.95 AUD</b>	<b>1,025,655.21 AUD</b>	<b>99,595.27 AUD</b>	<b>926,059.94 AUD</b>					

Contract Level Data

Net Salvage Recoveries By Contract By Month

No.	Month / Year of Origination	Month / Year of Net Salvage	Nov-13	Dec-13	Jan-14	Feb-14	Mar-14	Apr-14	May-14	Jun-14	Jul-14
1	03/2013	01/2014	- AUD	- AUD	- AUD	1,815.92 AUD	- AUD	- AUD	- AUD	- AUD	- AUD
2	08/2013	01/2014	- AUD	- AUD	- AUD	467.88 AUD	- AUD	- AUD	- AUD	- AUD	- AUD
3	01/2012	02/2014	- AUD	- AUD	- AUD	(896.88) AUD	- AUD	- AUD	- AUD	- AUD	- AUD
4	04/2013	02/2014	- AUD	- AUD	- AUD	- AUD	- AUD	- AUD	- AUD	- AUD	- AUD
5	09/2011	04/2014	- AUD	- AUD	- AUD	- AUD	- AUD	- AUD	464.37 AUD	- AUD	- AUD
6	02/2009	06/2014	- AUD	- AUD	- AUD	- AUD	- AUD	- AUD	- AUD	- AUD	- AUD
7	09/2010	06/2014	- AUD	- AUD	- AUD	- AUD	- AUD	- AUD	- AUD	- AUD	- AUD
8	07/2011	06/2014	- AUD	- AUD	- AUD	- AUD	- AUD	- AUD	- AUD	- AUD	- AUD
9	08/2013	06/2014	- AUD	- AUD	- AUD	- AUD	- AUD	- AUD	- AUD	- AUD	- AUD
10	12/2010	07/2014	- AUD	- AUD	- AUD	- AUD	- AUD	- AUD	- AUD	- AUD	- AUD
11	01/2011	07/2014	- AUD	- AUD	- AUD	- AUD	- AUD	- AUD	- AUD	- AUD	- AUD
12	06/2011	07/2014	- AUD	- AUD	- AUD	- AUD	- AUD	- AUD	- AUD	- AUD	- AUD
13	08/2011	07/2014	- AUD	- AUD	- AUD	- AUD	- AUD	- AUD	- AUD	- AUD	587.06 AUD
14	10/2011	07/2014	- AUD	- AUD	- AUD	- AUD	- AUD	- AUD	- AUD	- AUD	(3,025.00) AUD
15	09/2012	07/2014	- AUD	- AUD	- AUD	- AUD	- AUD	- AUD	- AUD	- AUD	- AUD
16	02/2013	07/2014	- AUD	- AUD	- AUD	- AUD	- AUD	- AUD	- AUD	- AUD	- AUD
17	05/2009	08/2014	- AUD	- AUD	- AUD	- AUD	- AUD	- AUD	- AUD	- AUD	- AUD
18	03/2010	08/2014	- AUD	- AUD	- AUD	- AUD	- AUD	- AUD	- AUD	- AUD	- AUD
19	04/2011	08/2014	- AUD	- AUD	- AUD	- AUD	- AUD	- AUD	- AUD	- AUD	- AUD
20	07/2013	08/2014	- AUD	- AUD	- AUD	- AUD	- AUD	- AUD	- AUD	- AUD	- AUD
21	06/2011	09/2014	- AUD	- AUD	- AUD	- AUD	- AUD	- AUD	- AUD	- AUD	- AUD
22	12/2011	09/2014	- AUD	- AUD	- AUD	- AUD	- AUD	- AUD	- AUD	- AUD	- AUD
23	03/2013	09/2014	- AUD	- AUD	- AUD	- AUD	- AUD	- AUD	- AUD	- AUD	- AUD
24	06/2009	10/2014	- AUD	- AUD	- AUD	- AUD	- AUD	- AUD	- AUD	- AUD	- AUD
25	07/2010	10/2014	- AUD	- AUD	- AUD	- AUD	- AUD	- AUD	- AUD	- AUD	- AUD
26	10/2012	10/2014	- AUD	- AUD	- AUD	- AUD	- AUD	- AUD	- AUD	- AUD	- AUD
27	11/2011	11/2014	- AUD	- AUD	- AUD	- AUD	- AUD	- AUD	- AUD	- AUD	- AUD
28	03/2012	11/2014	- AUD	- AUD	- AUD	- AUD	- AUD	- AUD	- AUD	- AUD	- AUD
29	07/2011	12/2014	- AUD	- AUD	- AUD	- AUD	- AUD	- AUD	- AUD	- AUD	- AUD
30	06/2013	12/2014	- AUD	- AUD	- AUD	- AUD	- AUD	- AUD	- AUD	- AUD	- AUD
31	07/2013	12/2014	- AUD	- AUD	- AUD	- AUD	- AUD	- AUD	- AUD	- AUD	- AUD
32	06/2009	01/2015	- AUD	- AUD	- AUD	- AUD	- AUD	- AUD	- AUD	- AUD	- AUD
33	01/2011	01/2015	- AUD	- AUD	- AUD	- AUD	- AUD	- AUD	- AUD	- AUD	- AUD
34	07/2011	01/2015	- AUD	- AUD	- AUD	- AUD	- AUD	- AUD	- AUD	- AUD	- AUD
35	08/2011	01/2015	- AUD	- AUD	- AUD	- AUD	- AUD	- AUD	- AUD	- AUD	- AUD
36	09/2009	02/2015	- AUD	- AUD	- AUD	- AUD	- AUD	- AUD	- AUD	- AUD	- AUD
37	10/2009	03/2015	- AUD	- AUD	- AUD	- AUD	- AUD	- AUD	- AUD	- AUD	- AUD
38	10/2009	03/2015	- AUD	- AUD	- AUD	- AUD	- AUD	- AUD	- AUD	- AUD	- AUD
39	11/2009	03/2015	- AUD	- AUD	- AUD	- AUD	- AUD	- AUD	- AUD	- AUD	- AUD
40	12/2009	03/2015	- AUD	- AUD	- AUD	- AUD	- AUD	- AUD	- AUD	- AUD	- AUD
41	05/2010	03/2015	- AUD	- AUD	- AUD	- AUD	- AUD	- AUD	- AUD	- AUD	- AUD
42	02/2011	03/2015	- AUD	- AUD	- AUD	- AUD	- AUD	- AUD	- AUD	- AUD	- AUD
43	07/2012	03/2015	- AUD	- AUD	- AUD	- AUD	- AUD	- AUD	- AUD	- AUD	- AUD
44	06/2013	03/2015	- AUD	- AUD	- AUD	- AUD	- AUD	- AUD	- AUD	- AUD	- AUD
45	08/2013	03/2015	- AUD	- AUD	- AUD	- AUD	- AUD	- AUD	- AUD	- AUD	- AUD
46	11/2011	04/2015	- AUD	- AUD	- AUD	- AUD	- AUD	- AUD	- AUD	- AUD	- AUD
47	03/2013	04/2015	- AUD	- AUD	- AUD	- AUD	- AUD	- AUD	- AUD	- AUD	- AUD
48	12/2009	05/2015	- AUD	- AUD	- AUD	- AUD	- AUD	- AUD	- AUD	- AUD	- AUD
49	01/2010	05/2015	- AUD	- AUD	- AUD	- AUD	- AUD	- AUD	- AUD	- AUD	- AUD
50	08/2011	05/2015	- AUD	- AUD	- AUD	- AUD	- AUD	- AUD	- AUD	- AUD	- AUD
51	09/2011	05/2015	- AUD	- AUD	- AUD	- AUD	- AUD	- AUD	- AUD	- AUD	- AUD
52	10/2011	05/2015	- AUD	- AUD	- AUD	- AUD	- AUD	- AUD	- AUD	- AUD	- AUD
53	11/2012	05/2015	- AUD	- AUD	- AUD	- AUD	- AUD	- AUD	- AUD	- AUD	- AUD
54	03/2013	05/2015	- AUD	- AUD	- AUD	- AUD	- AUD	- AUD	- AUD	- AUD	- AUD
55	04/2013	05/2015	- AUD	- AUD	- AUD	- AUD	- AUD	- AUD	- AUD	- AUD	- AUD
56	02/2010	06/2015	- AUD	- AUD	- AUD	- AUD	- AUD	- AUD	- AUD	- AUD	- AUD
57	05/2011	06/2015	- AUD	- AUD	- AUD	- AUD	- AUD	- AUD	- AUD	- AUD	- AUD
58	12/2011	06/2015	- AUD	- AUD	- AUD	- AUD	- AUD	- AUD	- AUD	- AUD	- AUD
59	03/2011	07/2015	- AUD	- AUD	- AUD	- AUD	- AUD	- AUD	- AUD	- AUD	- AUD
60	04/2011	07/2015	- AUD	- AUD	- AUD	- AUD	- AUD	- AUD	- AUD	- AUD	- AUD
61	10/2011	07/2015	- AUD	- AUD	- AUD	- AUD	- AUD	- AUD	- AUD	- AUD	- AUD
62	10/2011	07/2015	- AUD	- AUD	- AUD	- AUD	- AUD	- AUD	- AUD	- AUD	- AUD

Contract Level Data

Net Salvage Recoveries By Contract By Month

No.	Month / Year of Origination	Month / Year of Net Salvage	Nov-13	Dec-13	Jan-14	Feb-14	Mar-14	Apr-14	May-14	Jun-14	Jul-14
63	06/2012	07/2015	- AUD	- AUD	- AUD	- AUD	- AUD	- AUD	- AUD	- AUD	- AUD
64	05/2010	08/2015	- AUD	- AUD	- AUD	- AUD	- AUD	- AUD	- AUD	- AUD	- AUD
65	09/2012	08/2015	- AUD	- AUD	- AUD	- AUD	- AUD	- AUD	- AUD	- AUD	- AUD
66	02/2013	08/2015	- AUD	- AUD	- AUD	- AUD	- AUD	- AUD	- AUD	- AUD	- AUD
67	05/2011	09/2015	- AUD	- AUD	- AUD	- AUD	- AUD	- AUD	- AUD	- AUD	- AUD
68	05/2011	09/2015	- AUD	- AUD	- AUD	- AUD	- AUD	- AUD	- AUD	- AUD	- AUD
69	11/2012	09/2015	- AUD	- AUD	- AUD	- AUD	- AUD	- AUD	- AUD	- AUD	- AUD
70	12/2010	10/2015	- AUD	- AUD	- AUD	- AUD	- AUD	- AUD	- AUD	- AUD	- AUD
71	07/2012	10/2015	- AUD	- AUD	- AUD	- AUD	- AUD	- AUD	- AUD	- AUD	- AUD
72	01/2013	11/2015	- AUD	- AUD	- AUD	- AUD	- AUD	- AUD	- AUD	- AUD	- AUD
73	08/2013	11/2015	- AUD	- AUD	- AUD	- AUD	- AUD	- AUD	- AUD	- AUD	- AUD
<b>Total</b>	<b>73</b>		- AUD	- AUD	- AUD	1,386.92 AUD	- AUD	- AUD	464.37 AUD	- AUD	(2,437.94) AUD

## Contract Level Data

## Net Salvage Recoveries By Contract By Month

No.	Month / Year of Origination	Month / Year of Net Salvage	Aug-14	Sep-14	Oct-14	Nov-14	Dec-14	Jan-15	Feb-15	Mar-15	Apr-15
1	03/2013	01/2014	- AUD	- AUD	- AUD	- AUD	- AUD	- AUD	- AUD	- AUD	- AUD
2	08/2013	01/2014	- AUD	- AUD	- AUD	- AUD	- AUD	- AUD	- AUD	- AUD	- AUD
3	01/2012	02/2014	- AUD	- AUD	- AUD	- AUD	- AUD	- AUD	- AUD	- AUD	- AUD
4	04/2013	02/2014	- AUD	- AUD	- AUD	- AUD	- AUD	- AUD	- AUD	- AUD	- AUD
5	09/2011	04/2014	- AUD	- AUD	- AUD	- AUD	- AUD	- AUD	- AUD	- AUD	- AUD
6	02/2009	06/2014	- AUD	- AUD	- AUD	- AUD	- AUD	- AUD	- AUD	- AUD	- AUD
7	09/2010	06/2014	- AUD	- AUD	- AUD	- AUD	- AUD	- AUD	- AUD	- AUD	- AUD
8	07/2011	06/2014	- AUD	- AUD	- AUD	- AUD	- AUD	- AUD	- AUD	- AUD	- AUD
9	08/2013	06/2014	- AUD	- AUD	- AUD	- AUD	- AUD	- AUD	- AUD	- AUD	- AUD
10	12/2010	07/2014	- AUD	- AUD	- AUD	- AUD	- AUD	- AUD	- AUD	- AUD	- AUD
11	01/2011	07/2014	- AUD	- AUD	- AUD	- AUD	- AUD	- AUD	- AUD	- AUD	- AUD
12	06/2011	07/2014	- AUD	- AUD	- AUD	- AUD	- AUD	- AUD	- AUD	- AUD	- AUD
13	08/2011	07/2014	- AUD	- AUD	- AUD	- AUD	- AUD	- AUD	- AUD	- AUD	- AUD
14	10/2011	07/2014	- AUD	21,241.50 AUD	- AUD	- AUD	- AUD	- AUD	- AUD	- AUD	- AUD
15	09/2012	07/2014	- AUD	- AUD	- AUD	- AUD	- AUD	- AUD	- AUD	- AUD	- AUD
16	02/2013	07/2014	- AUD	- AUD	- AUD	- AUD	- AUD	- AUD	- AUD	- AUD	- AUD
17	05/2009	08/2014	- AUD	- AUD	- AUD	- AUD	- AUD	- AUD	- AUD	- AUD	- AUD
18	03/2010	08/2014	- AUD	351.36 AUD	- AUD	- AUD	- AUD	- AUD	- AUD	- AUD	- AUD
19	04/2011	08/2014	- AUD	- AUD	- AUD	- AUD	- AUD	- AUD	- AUD	- AUD	- AUD
20	07/2013	08/2014	- AUD	- AUD	- AUD	- AUD	- AUD	- AUD	- AUD	- AUD	- AUD
21	06/2011	09/2014	- AUD	- AUD	- AUD	- AUD	- AUD	- AUD	- AUD	- AUD	- AUD
22	12/2011	09/2014	- AUD	- AUD	509.22 AUD	- AUD	- AUD	- AUD	- AUD	- AUD	- AUD
23	03/2013	09/2014	- AUD	- AUD	- AUD	- AUD	- AUD	359.94 AUD	- AUD	- AUD	308.52 AUD
24	06/2009	10/2014	- AUD	- AUD	- AUD	- AUD	- AUD	- AUD	- AUD	- AUD	- AUD
25	07/2010	10/2014	- AUD	- AUD	- AUD	- AUD	- AUD	- AUD	- AUD	- AUD	- AUD
26	10/2012	10/2014	- AUD	- AUD	- AUD	- AUD	- AUD	- AUD	- AUD	- AUD	- AUD
27	11/2011	11/2014	- AUD	- AUD	- AUD	- AUD	- AUD	- AUD	- AUD	- AUD	1,341.68 AUD
28	03/2012	11/2014	- AUD	- AUD	- AUD	- AUD	- AUD	- AUD	- AUD	- AUD	- AUD
29	07/2011	12/2014	- AUD	- AUD	- AUD	- AUD	- AUD	- AUD	- AUD	- AUD	- AUD
30	06/2013	12/2014	- AUD	- AUD	- AUD	- AUD	- AUD	- AUD	- AUD	- AUD	- AUD
31	07/2013	12/2014	- AUD	- AUD	- AUD	- AUD	- AUD	- AUD	- AUD	- AUD	- AUD
32	06/2009	01/2015	- AUD	- AUD	- AUD	- AUD	- AUD	- AUD	- AUD	- AUD	- AUD
33	01/2011	01/2015	- AUD	- AUD	- AUD	- AUD	- AUD	- AUD	- AUD	- AUD	- AUD
34	07/2011	01/2015	- AUD	- AUD	- AUD	- AUD	- AUD	(1,314.50) AUD	20,032.73 AUD	- AUD	- AUD
35	08/2011	01/2015	- AUD	- AUD	- AUD	- AUD	- AUD	- AUD	- AUD	- AUD	- AUD
36	09/2009	02/2015	- AUD	- AUD	- AUD	- AUD	- AUD	- AUD	- AUD	- AUD	- AUD
37	10/2009	03/2015	- AUD	- AUD	- AUD	- AUD	- AUD	- AUD	- AUD	- AUD	- AUD
38	10/2009	03/2015	- AUD	- AUD	- AUD	- AUD	- AUD	- AUD	- AUD	- AUD	- AUD
39	11/2009	03/2015	- AUD	- AUD	- AUD	- AUD	- AUD	- AUD	- AUD	- AUD	- AUD
40	12/2009	03/2015	- AUD	- AUD	- AUD	- AUD	- AUD	- AUD	- AUD	- AUD	- AUD
41	05/2010	03/2015	- AUD	- AUD	- AUD	- AUD	- AUD	- AUD	- AUD	(1,197.06) AUD	- AUD
42	02/2011	03/2015	- AUD	- AUD	- AUD	- AUD	- AUD	- AUD	- AUD	- AUD	- AUD
43	07/2012	03/2015	- AUD	- AUD	- AUD	- AUD	- AUD	- AUD	- AUD	- AUD	- AUD
44	06/2013	03/2015	- AUD	- AUD	- AUD	- AUD	- AUD	- AUD	- AUD	- AUD	- AUD
45	08/2013	03/2015	- AUD	- AUD	- AUD	- AUD	- AUD	- AUD	- AUD	(1,259.50) AUD	32,492.27 AUD
46	11/2011	04/2015	- AUD	- AUD	- AUD	- AUD	- AUD	- AUD	- AUD	- AUD	(110.00) AUD
47	03/2013	04/2015	- AUD	- AUD	- AUD	- AUD	- AUD	- AUD	- AUD	- AUD	- AUD
48	12/2009	05/2015	- AUD	- AUD	- AUD	- AUD	- AUD	- AUD	- AUD	- AUD	- AUD
49	01/2010	05/2015	- AUD	- AUD	- AUD	- AUD	- AUD	- AUD	- AUD	- AUD	- AUD
50	08/2011	05/2015	- AUD	- AUD	- AUD	- AUD	- AUD	- AUD	- AUD	- AUD	- AUD
51	09/2011	05/2015	- AUD	- AUD	- AUD	- AUD	- AUD	- AUD	- AUD	- AUD	- AUD
52	10/2011	05/2015	- AUD	- AUD	- AUD	- AUD	- AUD	- AUD	- AUD	- AUD	- AUD
53	11/2012	05/2015	- AUD	- AUD	- AUD	- AUD	- AUD	- AUD	- AUD	- AUD	- AUD
54	03/2013	05/2015	- AUD	- AUD	- AUD	- AUD	- AUD	- AUD	- AUD	- AUD	- AUD
55	04/2013	05/2015	- AUD	- AUD	- AUD	- AUD	- AUD	- AUD	- AUD	- AUD	- AUD
56	02/2010	06/2015	- AUD	- AUD	- AUD	- AUD	- AUD	- AUD	- AUD	- AUD	- AUD
57	05/2011	06/2015	- AUD	- AUD	- AUD	- AUD	- AUD	- AUD	- AUD	- AUD	- AUD
58	12/2011	06/2015	- AUD	- AUD	- AUD	- AUD	- AUD	- AUD	- AUD	- AUD	- AUD
59	03/2011	07/2015	- AUD	- AUD	- AUD	- AUD	- AUD	- AUD	- AUD	- AUD	- AUD
60	04/2011	07/2015	- AUD	- AUD	- AUD	- AUD	- AUD	- AUD	- AUD	- AUD	- AUD
61	10/2011	07/2015	- AUD	- AUD	- AUD	- AUD	- AUD	- AUD	- AUD	- AUD	- AUD
62	10/2011	07/2015	- AUD	- AUD	- AUD	- AUD	- AUD	- AUD	- AUD	- AUD	- AUD



## Contract Level Data

## Net Salvage Recoveries By Contract By Month

No.	Month / Year of Origination	Month / Year of Net Salvage	Aug-14	Sep-14	Oct-14	Nov-14	Dec-14	Jan-15	Feb-15	Mar-15	Apr-15
63	06/2012	07/2015	- AUD	- AUD	- AUD	- AUD	- AUD	- AUD	- AUD	- AUD	- AUD
64	05/2010	08/2015	- AUD	- AUD	- AUD	- AUD	- AUD	- AUD	- AUD	- AUD	- AUD
65	09/2012	08/2015	- AUD	- AUD	- AUD	- AUD	- AUD	- AUD	- AUD	- AUD	- AUD
66	02/2013	08/2015	- AUD	- AUD	- AUD	- AUD	- AUD	- AUD	- AUD	- AUD	- AUD
67	05/2011	09/2015	- AUD	- AUD	- AUD	- AUD	- AUD	- AUD	- AUD	- AUD	- AUD
68	05/2011	09/2015	- AUD	- AUD	- AUD	- AUD	- AUD	- AUD	- AUD	- AUD	- AUD
69	11/2012	09/2015	- AUD	- AUD	- AUD	- AUD	- AUD	- AUD	- AUD	- AUD	- AUD
70	12/2010	10/2015	- AUD	- AUD	- AUD	- AUD	- AUD	- AUD	- AUD	- AUD	- AUD
71	07/2012	10/2015	- AUD	- AUD	- AUD	- AUD	- AUD	- AUD	- AUD	- AUD	- AUD
72	01/2013	11/2015	- AUD	- AUD	- AUD	- AUD	- AUD	- AUD	- AUD	- AUD	- AUD
73	08/2013	11/2015	- AUD	- AUD	- AUD	- AUD	- AUD	- AUD	- AUD	- AUD	- AUD
<b>Total</b>	<b>73</b>		- AUD	21,592.86 AUD	509.22 AUD	- AUD	- AUD	(954.56) AUD	20,032.73 AUD	(2,456.56) AUD	34,032.47 AUD

## Contract Level Data

## Net Salvage Recoveries By Contract By Month

No.	Month / Year of Origination	Month / Year of Net Salvage	May-15	Jun-15	Jul-15	Aug-15	Sep-15	Oct-15	Nov-15	Dec-15	Jan-16
1	03/2013	01/2014	- AUD	- AUD	- AUD	- AUD	- AUD	- AUD	- AUD	- AUD	- AUD
2	08/2013	01/2014	- AUD	- AUD	- AUD	- AUD	- AUD	- AUD	- AUD	- AUD	- AUD
3	01/2012	02/2014	- AUD	- AUD	- AUD	698.34 AUD	- AUD	- AUD	- AUD	- AUD	- AUD
4	04/2013	02/2014	- AUD	- AUD	- AUD	- AUD	- AUD	- AUD	- AUD	- AUD	- AUD
5	09/2011	04/2014	- AUD	- AUD	- AUD	- AUD	- AUD	- AUD	- AUD	- AUD	- AUD
6	02/2009	06/2014	- AUD	- AUD	- AUD	- AUD	- AUD	- AUD	- AUD	- AUD	- AUD
7	09/2010	06/2014	- AUD	- AUD	- AUD	- AUD	- AUD	- AUD	- AUD	- AUD	- AUD
8	07/2011	06/2014	- AUD	- AUD	- AUD	- AUD	- AUD	- AUD	- AUD	- AUD	- AUD
9	08/2013	06/2014	- AUD	- AUD	- AUD	- AUD	- AUD	- AUD	- AUD	- AUD	- AUD
10	12/2010	07/2014	- AUD	- AUD	- AUD	- AUD	- AUD	- AUD	- AUD	- AUD	- AUD
11	01/2011	07/2014	- AUD	- AUD	- AUD	- AUD	81.12 AUD	- AUD	- AUD	- AUD	- AUD
12	06/2011	07/2014	- AUD	- AUD	- AUD	- AUD	- AUD	- AUD	- AUD	- AUD	- AUD
13	08/2011	07/2014	- AUD	- AUD	- AUD	- AUD	- AUD	- AUD	- AUD	- AUD	- AUD
14	10/2011	07/2014	- AUD	- AUD	- AUD	- AUD	- AUD	- AUD	- AUD	- AUD	- AUD
15	09/2012	07/2014	- AUD	- AUD	- AUD	- AUD	- AUD	- AUD	- AUD	- AUD	- AUD
16	02/2013	07/2014	- AUD	- AUD	- AUD	- AUD	- AUD	- AUD	- AUD	- AUD	- AUD
17	05/2009	08/2014	- AUD	- AUD	- AUD	- AUD	- AUD	- AUD	- AUD	- AUD	- AUD
18	03/2010	08/2014	- AUD	- AUD	- AUD	- AUD	- AUD	- AUD	- AUD	- AUD	- AUD
19	04/2011	08/2014	- AUD	- AUD	- AUD	- AUD	- AUD	- AUD	- AUD	- AUD	- AUD
20	07/2013	08/2014	- AUD	- AUD	- AUD	2,708.08 AUD	- AUD	- AUD	- AUD	- AUD	- AUD
21	06/2011	09/2014	- AUD	- AUD	- AUD	- AUD	- AUD	- AUD	- AUD	- AUD	- AUD
22	12/2011	09/2014	- AUD	- AUD	- AUD	- AUD	- AUD	- AUD	- AUD	- AUD	- AUD
23	03/2013	09/2014	- AUD	- AUD	308.52 AUD	- AUD	- AUD	304.05 AUD	- AUD	- AUD	- AUD
24	06/2009	10/2014	- AUD	- AUD	- AUD	- AUD	- AUD	- AUD	- AUD	- AUD	- AUD
25	07/2010	10/2014	1,944.29 AUD	- AUD	- AUD	- AUD	- AUD	- AUD	3,727.27 AUD	- AUD	- AUD
26	10/2012	10/2014	- AUD	- AUD	- AUD	- AUD	- AUD	- AUD	- AUD	- AUD	- AUD
27	11/2011	11/2014	- AUD	- AUD	- AUD	- AUD	- AUD	- AUD	- AUD	- AUD	- AUD
28	03/2012	11/2014	- AUD	- AUD	- AUD	- AUD	- AUD	- AUD	- AUD	- AUD	- AUD
29	07/2011	12/2014	- AUD	- AUD	- AUD	- AUD	- AUD	- AUD	- AUD	- AUD	- AUD
30	06/2013	12/2014	- AUD	- AUD	- AUD	- AUD	- AUD	- AUD	- AUD	- AUD	- AUD
31	07/2013	12/2014	- AUD	- AUD	- AUD	- AUD	- AUD	- AUD	- AUD	- AUD	- AUD
32	06/2009	01/2015	- AUD	- AUD	- AUD	- AUD	- AUD	- AUD	- AUD	- AUD	- AUD
33	01/2011	01/2015	- AUD	- AUD	- AUD	283.74 AUD	- AUD	- AUD	- AUD	- AUD	- AUD
34	07/2011	01/2015	- AUD	- AUD	- AUD	- AUD	- AUD	- AUD	- AUD	- AUD	- AUD
35	08/2011	01/2015	- AUD	- AUD	- AUD	- AUD	- AUD	- AUD	- AUD	- AUD	- AUD
36	09/2009	02/2015	- AUD	- AUD	- AUD	- AUD	- AUD	- AUD	- AUD	- AUD	- AUD
37	10/2009	03/2015	- AUD	- AUD	- AUD	- AUD	- AUD	- AUD	- AUD	- AUD	- AUD
38	10/2009	03/2015	- AUD	- AUD	- AUD	- AUD	360.00 AUD	- AUD	- AUD	- AUD	- AUD
39	11/2009	03/2015	- AUD	- AUD	- AUD	- AUD	- AUD	- AUD	- AUD	- AUD	- AUD
40	12/2009	03/2015	- AUD	- AUD	- AUD	- AUD	- AUD	- AUD	- AUD	- AUD	- AUD
41	05/2010	03/2015	- AUD	- AUD	- AUD	45.87 AUD	- AUD	- AUD	- AUD	- AUD	- AUD
42	02/2011	03/2015	- AUD	- AUD	- AUD	- AUD	- AUD	- AUD	- AUD	- AUD	- AUD
43	07/2012	03/2015	- AUD	- AUD	- AUD	328.63 AUD	- AUD	- AUD	- AUD	- AUD	- AUD
44	06/2013	03/2015	- AUD	- AUD	4,545.45 AUD	7,727.27 AUD	- AUD	- AUD	- AUD	- AUD	- AUD
45	08/2013	03/2015	- AUD	- AUD	- AUD	- AUD	- AUD	- AUD	- AUD	- AUD	- AUD
46	11/2011	04/2015	- AUD	- AUD	110.00 AUD	- AUD	- AUD	- AUD	- AUD	- AUD	- AUD
47	03/2013	04/2015	- AUD	- AUD	- AUD	- AUD	- AUD	- AUD	- AUD	- AUD	- AUD
48	12/2009	05/2015	- AUD	- AUD	- AUD	- AUD	- AUD	- AUD	- AUD	- AUD	- AUD
49	01/2010	05/2015	- AUD	- AUD	- AUD	- AUD	- AUD	- AUD	- AUD	- AUD	- AUD
50	08/2011	05/2015	- AUD	- AUD	- AUD	- AUD	- AUD	- AUD	- AUD	- AUD	- AUD
51	09/2011	05/2015	- AUD	- AUD	- AUD	282.03 AUD	- AUD	- AUD	- AUD	- AUD	- AUD
52	10/2011	05/2015	- AUD	(634.70) AUD	- AUD	374.03 AUD	- AUD	- AUD	- AUD	- AUD	- AUD
53	11/2012	05/2015	1,870.12 AUD	- AUD	- AUD	- AUD	- AUD	- AUD	- AUD	- AUD	- AUD
54	03/2013	05/2015	(566.00) AUD	- AUD	- AUD	- AUD	- AUD	- AUD	- AUD	- AUD	- AUD
55	04/2013	05/2015	(770.00) AUD	- AUD	- AUD	282.69 AUD	- AUD	- AUD	- AUD	- AUD	- AUD
56	02/2010	06/2015	- AUD	- AUD	- AUD	- AUD	- AUD	90.91 AUD	- AUD	- AUD	- AUD
57	05/2011	06/2015	- AUD	- AUD	- AUD	- AUD	- AUD	- AUD	- AUD	- AUD	- AUD
58	12/2011	06/2015	- AUD	- AUD	- AUD	418.60 AUD	- AUD	- AUD	- AUD	- AUD	- AUD
59	03/2011	07/2015	- AUD	- AUD	- AUD	- AUD	- AUD	- AUD	- AUD	- AUD	- AUD
60	04/2011	07/2015	- AUD	- AUD	- AUD	- AUD	- AUD	- AUD	- AUD	- AUD	- AUD
61	10/2011	07/2015	- AUD	- AUD	- AUD	- AUD	- AUD	1,163.69 AUD	909.09 AUD	- AUD	- AUD
62	10/2011	07/2015	- AUD	- AUD	- AUD	- AUD	- AUD	- AUD	- AUD	- AUD	- AUD

## Contract Level Data

## Net Salvage Recoveries By Contract By Month

No.	Month / Year of Origination	Month / Year of Net Salvage	May-15	Jun-15	Jul-15	Aug-15	Sep-15	Oct-15	Nov-15	Dec-15	Jan-16
63	06/2012	07/2015	- AUD	- AUD	- AUD	- AUD	- AUD	- AUD	- AUD	- AUD	- AUD
64	05/2010	08/2015	- AUD	- AUD	- AUD	- AUD	- AUD	- AUD	- AUD	- AUD	- AUD
65	09/2012	08/2015	- AUD	- AUD	- AUD	- AUD	280.83 AUD	- AUD	- AUD	- AUD	- AUD
66	02/2013	08/2015	- AUD	- AUD	- AUD	- AUD	- AUD	- AUD	- AUD	- AUD	- AUD
67	05/2011	09/2015	- AUD	- AUD	- AUD	- AUD	- AUD	- AUD	- AUD	- AUD	- AUD
68	05/2011	09/2015	- AUD	- AUD	- AUD	- AUD	- AUD	- AUD	- AUD	- AUD	- AUD
69	11/2012	09/2015	- AUD	- AUD	- AUD	- AUD	- AUD	551.84 AUD	- AUD	- AUD	- AUD
70	12/2010	10/2015	- AUD	- AUD	- AUD	- AUD	- AUD	- AUD	- AUD	- AUD	- AUD
71	07/2012	10/2015	- AUD	- AUD	- AUD	- AUD	- AUD	- AUD	- AUD	- AUD	- AUD
72	01/2013	11/2015	- AUD	- AUD	- AUD	- AUD	- AUD	- AUD	- AUD	- AUD	- AUD
73	08/2013	11/2015	- AUD	- AUD	- AUD	- AUD	- AUD	- AUD	- AUD	- AUD	- AUD
<b>Total</b>	<b>73</b>		2,478.41 AUD	(634.70) AUD	4,963.97 AUD	13,149.28 AUD	721.95 AUD	2,110.49 AUD	4,636.36 AUD	- AUD	- AUD

## Contract Level Data

## Net Salvage Recoveries By Contract By Month

No.	Month / Year of Origination	Month / Year of Net Salvage	Feb-16	Mar-16	Apr-16	May-16	Jun-16	Jul-16	Aug-16	Sep-16	Oct-16
1	03/2013	01/2014	- AUD	- AUD	- AUD	- AUD	- AUD	- AUD	- AUD	- AUD	- AUD
2	08/2013	01/2014	- AUD	- AUD	- AUD	- AUD	- AUD	- AUD	- AUD	- AUD	- AUD
3	01/2012	02/2014	- AUD	- AUD	- AUD	- AUD	- AUD	- AUD	- AUD	- AUD	- AUD
4	04/2013	02/2014	- AUD	- AUD	- AUD	- AUD	- AUD	- AUD	- AUD	- AUD	- AUD
5	09/2011	04/2014	- AUD	- AUD	- AUD	- AUD	- AUD	- AUD	- AUD	- AUD	- AUD
6	02/2009	06/2014	- AUD	- AUD	- AUD	- AUD	- AUD	- AUD	- AUD	- AUD	- AUD
7	09/2010	06/2014	- AUD	- AUD	- AUD	- AUD	- AUD	- AUD	- AUD	- AUD	- AUD
8	07/2011	06/2014	- AUD	- AUD	- AUD	- AUD	- AUD	- AUD	- AUD	- AUD	- AUD
9	08/2013	06/2014	- AUD	- AUD	- AUD	- AUD	- AUD	- AUD	- AUD	- AUD	- AUD
10	12/2010	07/2014	- AUD	- AUD	- AUD	- AUD	- AUD	- AUD	- AUD	- AUD	- AUD
11	01/2011	07/2014	- AUD	- AUD	- AUD	- AUD	- AUD	- AUD	- AUD	- AUD	- AUD
12	06/2011	07/2014	- AUD	- AUD	- AUD	- AUD	- AUD	- AUD	- AUD	- AUD	- AUD
13	08/2011	07/2014	- AUD	- AUD	- AUD	- AUD	- AUD	- AUD	- AUD	- AUD	- AUD
14	10/2011	07/2014	- AUD	- AUD	- AUD	- AUD	- AUD	- AUD	- AUD	- AUD	- AUD
15	09/2012	07/2014	- AUD	- AUD	- AUD	- AUD	- AUD	- AUD	- AUD	- AUD	- AUD
16	02/2013	07/2014	- AUD	- AUD	- AUD	- AUD	- AUD	- AUD	- AUD	- AUD	- AUD
17	05/2009	08/2014	- AUD	- AUD	- AUD	- AUD	- AUD	- AUD	- AUD	- AUD	- AUD
18	03/2010	08/2014	- AUD	- AUD	- AUD	- AUD	- AUD	- AUD	- AUD	- AUD	- AUD
19	04/2011	08/2014	- AUD	- AUD	- AUD	- AUD	- AUD	- AUD	- AUD	- AUD	- AUD
20	07/2013	08/2014	- AUD	- AUD	- AUD	- AUD	- AUD	- AUD	- AUD	- AUD	- AUD
21	06/2011	09/2014	- AUD	- AUD	- AUD	- AUD	- AUD	- AUD	- AUD	- AUD	- AUD
22	12/2011	09/2014	- AUD	- AUD	- AUD	- AUD	- AUD	- AUD	- AUD	- AUD	- AUD
23	03/2013	09/2014	- AUD	- AUD	- AUD	- AUD	- AUD	- AUD	- AUD	- AUD	- AUD
24	06/2009	10/2014	- AUD	- AUD	- AUD	- AUD	- AUD	- AUD	- AUD	- AUD	- AUD
25	07/2010	10/2014	- AUD	- AUD	- AUD	- AUD	- AUD	- AUD	- AUD	- AUD	- AUD
26	10/2012	10/2014	- AUD	- AUD	- AUD	- AUD	- AUD	- AUD	- AUD	- AUD	- AUD
27	11/2011	11/2014	- AUD	- AUD	- AUD	- AUD	- AUD	- AUD	- AUD	- AUD	- AUD
28	03/2012	11/2014	- AUD	- AUD	- AUD	- AUD	- AUD	- AUD	- AUD	- AUD	- AUD
29	07/2011	12/2014	- AUD	- AUD	- AUD	- AUD	- AUD	- AUD	- AUD	- AUD	- AUD
30	06/2013	12/2014	- AUD	- AUD	- AUD	- AUD	- AUD	- AUD	- AUD	- AUD	- AUD
31	07/2013	12/2014	- AUD	- AUD	- AUD	- AUD	- AUD	- AUD	- AUD	- AUD	- AUD
32	06/2009	01/2015	- AUD	- AUD	- AUD	- AUD	- AUD	- AUD	- AUD	- AUD	- AUD
33	01/2011	01/2015	- AUD	- AUD	- AUD	- AUD	- AUD	- AUD	- AUD	- AUD	- AUD
34	07/2011	01/2015	- AUD	- AUD	- AUD	- AUD	- AUD	- AUD	- AUD	- AUD	- AUD
35	08/2011	01/2015	- AUD	- AUD	- AUD	- AUD	- AUD	- AUD	- AUD	- AUD	- AUD
36	09/2009	02/2015	- AUD	- AUD	- AUD	- AUD	- AUD	- AUD	- AUD	- AUD	- AUD
37	10/2009	03/2015	- AUD	- AUD	- AUD	- AUD	- AUD	- AUD	- AUD	- AUD	- AUD
38	10/2009	03/2015	- AUD	- AUD	- AUD	- AUD	- AUD	- AUD	- AUD	- AUD	- AUD
39	11/2009	03/2015	- AUD	- AUD	- AUD	- AUD	- AUD	- AUD	- AUD	- AUD	- AUD
40	12/2009	03/2015	- AUD	- AUD	- AUD	- AUD	- AUD	- AUD	- AUD	- AUD	- AUD
41	05/2010	03/2015	- AUD	- AUD	- AUD	- AUD	- AUD	- AUD	- AUD	- AUD	- AUD
42	02/2011	03/2015	- AUD	- AUD	- AUD	- AUD	- AUD	- AUD	- AUD	- AUD	- AUD
43	07/2012	03/2015	- AUD	- AUD	- AUD	- AUD	- AUD	- AUD	- AUD	- AUD	- AUD
44	06/2013	03/2015	- AUD	- AUD	- AUD	- AUD	- AUD	- AUD	- AUD	- AUD	- AUD
45	08/2013	03/2015	- AUD	- AUD	- AUD	- AUD	- AUD	- AUD	- AUD	- AUD	- AUD
46	11/2011	04/2015	- AUD	- AUD	- AUD	- AUD	- AUD	- AUD	- AUD	- AUD	- AUD
47	03/2013	04/2015	- AUD	- AUD	- AUD	- AUD	- AUD	- AUD	- AUD	- AUD	- AUD
48	12/2009	05/2015	- AUD	- AUD	- AUD	- AUD	- AUD	- AUD	- AUD	- AUD	- AUD
49	01/2010	05/2015	- AUD	- AUD	- AUD	- AUD	- AUD	- AUD	- AUD	- AUD	- AUD
50	08/2011	05/2015	- AUD	- AUD	- AUD	- AUD	- AUD	- AUD	- AUD	- AUD	- AUD
51	09/2011	05/2015	- AUD	- AUD	- AUD	- AUD	- AUD	- AUD	- AUD	- AUD	- AUD
52	10/2011	05/2015	- AUD	- AUD	- AUD	- AUD	- AUD	- AUD	- AUD	- AUD	- AUD
53	11/2012	05/2015	- AUD	- AUD	- AUD	- AUD	- AUD	- AUD	- AUD	- AUD	- AUD
54	03/2013	05/2015	- AUD	- AUD	- AUD	- AUD	- AUD	- AUD	- AUD	- AUD	- AUD
55	04/2013	05/2015	- AUD	- AUD	- AUD	- AUD	- AUD	- AUD	- AUD	- AUD	- AUD
56	02/2010	06/2015	- AUD	- AUD	- AUD	- AUD	- AUD	- AUD	- AUD	- AUD	- AUD
57	05/2011	06/2015	- AUD	- AUD	- AUD	- AUD	- AUD	- AUD	- AUD	- AUD	- AUD
58	12/2011	06/2015	- AUD	- AUD	- AUD	- AUD	- AUD	- AUD	- AUD	- AUD	- AUD
59	03/2011	07/2015	- AUD	- AUD	- AUD	- AUD	- AUD	- AUD	- AUD	- AUD	- AUD
60	04/2011	07/2015	- AUD	- AUD	- AUD	- AUD	- AUD	- AUD	- AUD	- AUD	- AUD
61	10/2011	07/2015	- AUD	- AUD	- AUD	- AUD	- AUD	- AUD	- AUD	- AUD	- AUD
62	10/2011	07/2015	- AUD	- AUD	- AUD	- AUD	- AUD	- AUD	- AUD	- AUD	- AUD

Contract Level Data

Net Salvage Recoveries By Contract By Month

No.	Month / Year of Origination	Month / Year of Net Salvage	Feb-16	Mar-16	Apr-16	May-16	Jun-16	Jul-16	Aug-16	Sep-16	Oct-16
63	06/2012	07/2015	- AUD	- AUD	- AUD	- AUD	- AUD	- AUD	- AUD	- AUD	- AUD
64	05/2010	08/2015	- AUD	- AUD	- AUD	- AUD	- AUD	- AUD	- AUD	- AUD	- AUD
65	09/2012	08/2015	- AUD	- AUD	- AUD	- AUD	- AUD	- AUD	- AUD	- AUD	- AUD
66	02/2013	08/2015	- AUD	- AUD	- AUD	- AUD	- AUD	- AUD	- AUD	- AUD	- AUD
67	05/2011	09/2015	- AUD	- AUD	- AUD	- AUD	- AUD	- AUD	- AUD	- AUD	- AUD
68	05/2011	09/2015	- AUD	- AUD	- AUD	- AUD	- AUD	- AUD	- AUD	- AUD	- AUD
69	11/2012	09/2015	- AUD	- AUD	- AUD	- AUD	- AUD	- AUD	- AUD	- AUD	- AUD
70	12/2010	10/2015	- AUD	- AUD	- AUD	- AUD	- AUD	- AUD	- AUD	- AUD	- AUD
71	07/2012	10/2015	- AUD	- AUD	- AUD	- AUD	- AUD	- AUD	- AUD	- AUD	- AUD
72	01/2013	11/2015	- AUD	- AUD	- AUD	- AUD	- AUD	- AUD	- AUD	- AUD	- AUD
73	08/2013	11/2015	- AUD	- AUD	- AUD	- AUD	- AUD	- AUD	- AUD	- AUD	- AUD
<b>Total</b>	<b>73</b>		- AUD	- AUD	- AUD	- AUD	- AUD	- AUD	- AUD	- AUD	- AUD

## Contract Level Data

## Net Salvage Recoveries By Contract By Month

No.	Month / Year of Origination	Month / Year of Net Salvage	Nov-16	Dec-16	Jan-17	Feb-17
1	03/2013	01/2014	- AUD	- AUD	- AUD	- AUD
2	08/2013	01/2014	- AUD	- AUD	- AUD	- AUD
3	01/2012	02/2014	- AUD	- AUD	- AUD	- AUD
4	04/2013	02/2014	- AUD	- AUD	- AUD	- AUD
5	09/2011	04/2014	- AUD	- AUD	- AUD	- AUD
6	02/2009	06/2014	- AUD	- AUD	- AUD	- AUD
7	09/2010	06/2014	- AUD	- AUD	- AUD	- AUD
8	07/2011	06/2014	- AUD	- AUD	- AUD	- AUD
9	08/2013	06/2014	- AUD	- AUD	- AUD	- AUD
10	12/2010	07/2014	- AUD	- AUD	- AUD	- AUD
11	01/2011	07/2014	- AUD	- AUD	- AUD	- AUD
12	06/2011	07/2014	- AUD	- AUD	- AUD	- AUD
13	08/2011	07/2014	- AUD	- AUD	- AUD	- AUD
14	10/2011	07/2014	- AUD	- AUD	- AUD	- AUD
15	09/2012	07/2014	- AUD	- AUD	- AUD	- AUD
16	02/2013	07/2014	- AUD	- AUD	- AUD	- AUD
17	05/2009	08/2014	- AUD	- AUD	- AUD	- AUD
18	03/2010	08/2014	- AUD	- AUD	- AUD	- AUD
19	04/2011	08/2014	- AUD	- AUD	- AUD	- AUD
20	07/2013	08/2014	- AUD	- AUD	- AUD	- AUD
21	06/2011	09/2014	- AUD	- AUD	- AUD	- AUD
22	12/2011	09/2014	- AUD	- AUD	- AUD	- AUD
23	03/2013	09/2014	- AUD	- AUD	- AUD	- AUD
24	06/2009	10/2014	- AUD	- AUD	- AUD	- AUD
25	07/2010	10/2014	- AUD	- AUD	- AUD	- AUD
26	10/2012	10/2014	- AUD	- AUD	- AUD	- AUD
27	11/2011	11/2014	- AUD	- AUD	- AUD	- AUD
28	03/2012	11/2014	- AUD	- AUD	- AUD	- AUD
29	07/2011	12/2014	- AUD	- AUD	- AUD	- AUD
30	06/2013	12/2014	- AUD	- AUD	- AUD	- AUD
31	07/2013	12/2014	- AUD	- AUD	- AUD	- AUD
32	06/2009	01/2015	- AUD	- AUD	- AUD	- AUD
33	01/2011	01/2015	- AUD	- AUD	- AUD	- AUD
34	07/2011	01/2015	- AUD	- AUD	- AUD	- AUD
35	08/2011	01/2015	- AUD	- AUD	- AUD	- AUD
36	09/2009	02/2015	- AUD	- AUD	- AUD	- AUD
37	10/2009	03/2015	- AUD	- AUD	- AUD	- AUD
38	10/2009	03/2015	- AUD	- AUD	- AUD	- AUD
39	11/2009	03/2015	- AUD	- AUD	- AUD	- AUD
40	12/2009	03/2015	- AUD	- AUD	- AUD	- AUD
41	05/2010	03/2015	- AUD	- AUD	- AUD	- AUD
42	02/2011	03/2015	- AUD	- AUD	- AUD	- AUD
43	07/2012	03/2015	- AUD	- AUD	- AUD	- AUD
44	06/2013	03/2015	- AUD	- AUD	- AUD	- AUD
45	08/2013	03/2015	- AUD	- AUD	- AUD	- AUD
46	11/2011	04/2015	- AUD	- AUD	- AUD	- AUD
47	03/2013	04/2015	- AUD	- AUD	- AUD	- AUD
48	12/2009	05/2015	- AUD	- AUD	- AUD	- AUD
49	01/2010	05/2015	- AUD	- AUD	- AUD	- AUD
50	08/2011	05/2015	- AUD	- AUD	- AUD	- AUD
51	09/2011	05/2015	- AUD	- AUD	- AUD	- AUD
52	10/2011	05/2015	- AUD	- AUD	- AUD	- AUD
53	11/2012	05/2015	- AUD	- AUD	- AUD	- AUD
54	03/2013	05/2015	- AUD	- AUD	- AUD	- AUD
55	04/2013	05/2015	- AUD	- AUD	- AUD	- AUD
56	02/2010	06/2015	- AUD	- AUD	- AUD	- AUD
57	05/2011	06/2015	- AUD	- AUD	- AUD	- AUD
58	12/2011	06/2015	- AUD	- AUD	- AUD	- AUD
59	03/2011	07/2015	- AUD	- AUD	- AUD	- AUD
60	04/2011	07/2015	- AUD	- AUD	- AUD	- AUD
61	10/2011	07/2015	- AUD	- AUD	- AUD	- AUD
62	10/2011	07/2015	- AUD	- AUD	- AUD	- AUD

Contract Level Data                      Net Salvage Recoveries By Contract By Month

No.	Month / Year of Origination	Month / Year of Net Salvage	Nov-16	Dec-16	Jan-17	Feb-17
63	06/2012	07/2015	- AUD	- AUD	- AUD	- AUD
64	05/2010	08/2015	- AUD	- AUD	- AUD	- AUD
65	09/2012	08/2015	- AUD	- AUD	- AUD	- AUD
66	02/2013	08/2015	- AUD	- AUD	- AUD	- AUD
67	05/2011	09/2015	- AUD	- AUD	- AUD	- AUD
68	05/2011	09/2015	- AUD	- AUD	- AUD	- AUD
69	11/2012	09/2015	- AUD	- AUD	- AUD	- AUD
70	12/2010	10/2015	- AUD	- AUD	- AUD	- AUD
71	07/2012	10/2015	- AUD	- AUD	- AUD	- AUD
72	01/2013	11/2015	- AUD	- AUD	- AUD	- AUD
73	08/2013	11/2015	- AUD	- AUD	- AUD	- AUD
Total	73		- AUD	- AUD	- AUD	- AUD