

<b>Deal Name:</b>	<b>Driver Australia One</b>
<b>Issuer:</b>	Perpetual Corporate Trust Limited (ABN 99 000 341 533) of Level 12, 123 Pitt Street, Sydney NSW 2000 Australia in its capacity as trustee of the Driver Australia One Trust.
<b>Originator of the Receivables:</b>	Volkswagen Financial Services Australia Pty Ltd
<b>Seller of the Receivables:</b>	Volkswagen Financial Services Australia Pty Ltd
<b>Servicer name:</b>	Volkswagen Financial Services Australia Pty Ltd
<b>Reporting Entity:</b>	Volkswagen Financial Services Australia Pty Ltd ABS Operations (Physical Address) Level 1, 24 Muir Road, Chullora NSW 2190 (Postal Address) Locked Bag 6252 Regents Park NSW 2143
<b>Contact:</b>	Phone: +61 2 9695 6371 Fax: +61 2 9695 6399 Email: ABSOperations.Australia@vwfs.com.au
<b>Corporate Service Provider:</b>	Perpetual Corporate Trust Limited (ABN 99 000 341 533) of Level 12, 123 Pitt Street, Sydney NSW 2000 Australia in its personal capacity.



## Contents

Page	Table of Contents
1	<a href="#">Cover</a>
2	<a href="#">Contents</a>
3	<a href="#">Reporting Details</a>
4	<a href="#">Parties Overview</a>
5	<a href="#">Transaction Events I</a>
6	<a href="#">Transaction Events II</a>
7	<a href="#">Transaction Events III</a>
8	<a href="#">Information regarding the Notes I</a>
9	<a href="#">Information regarding the Notes II</a>
10	<a href="#">Credit Enhancement</a>
11	<a href="#">Swap Fixing / Waterfall</a>
12	<a href="#">CRD Retention / Retention of Net Economic Interest</a>
13	<a href="#">Amortisation Profile I</a>
14	<a href="#">Amortisation Profile II</a>
15	<a href="#">Run Out Schedule I</a>
17	<a href="#">Run Out Schedule II</a>
18	<a href="#">Outstanding Contracts I</a>
20	<a href="#">Outstanding Contracts II</a>
21	<a href="#">Arrears</a>
23	<a href="#">Net Salvage Loss</a>
24	<a href="#">Net Salvage After Recoveries</a>
25	<a href="#">Pool Data I</a>
27	<a href="#">Pool Data II</a>
28	<a href="#">Pool Data III</a>
30	<a href="#">Pool Data IV</a>
32	<a href="#">Pool Data V</a>
34	<a href="#">Pool Data VI</a>
35	<a href="#">Pool Data VII</a>
39	<a href="#">Pool Data VIII</a>
41	<a href="#">Hardship Extensions</a>
42	<a href="#">Contract Level Data</a>

## Reporting Details

Deal Overview				
Pool Cut Date	31/10/2013	Publication Date:	17/11/2014 (16th of each month)	
Scheduled Date of Clean-Up-Call	02/2017	Payment Date:	21/11/2014 (21st of each month)	
Legal Maturity Date	1/12/2021	Reporting Date:	31/10/2014	
Issue Date	12/12/2013	Asset Collection Period:	from 01/10/2014 until 31/10/2014	
Period No.:	11	Interest Accrual Period	from 21/10/2014 until 21/11/2014	
Reporting frequency:	Monthly	Note Payment Period:	from 21/10/2014 until 21/11/2014	
Next Payment Date:	22/12/2014	Days accrued:	31	

Vehicle Type at Pool Cut	Number of Contracts	Percentage of Contracts	Outstanding Discounted Contract Balance	Percentage Outstanding Discounted Contract Balance
New	13,968	84.66%	438,595,554.40 AUD	87.72%
Used	2,531	15.34%	61,404,521.49 AUD	12.28%
<b>Total</b>	<b>16,499</b>	<b>100.00%</b>	<b>500,000,075.89 AUD</b>	<b>100.00%</b>

Credit Type at Pool Cut	Number of Contracts	Percentage of Contracts	Outstanding Discounted Contract Balance	Percentage Outstanding Discounted Contract Balance
Hire Purchase	2,970	18.00%	92,130,371.43 AUD	18.43%
Chattel Mortgage	5,094	30.87%	151,176,375.85 AUD	30.24%
Consumer Loan	8,435	51.12%	256,693,328.61 AUD	51.34%
<b>Total</b>	<b>16,499</b>	<b>100.00%</b>	<b>500,000,075.89 AUD</b>	<b>100.00%</b>

## Parties Overview

<b>Lead Managers:</b> <b>Australia and New Zealand Banking Group Limited (ABN 11 005 357 522)</b> ANZ Tower 242 Pitt Street Sydney, NSW 2000 Australia <b>The Royal Bank of Scotland plc (ABN 30 101 464 528)</b> Level 23, 88 Phillip Street Sydney NSW 2000 Australia	<b>Security Trustee:</b> <b>P.T. Limited</b> Level 12 123 Pitt Street Sydney NSW 2000 Australia
<b>Trustee:</b> <b>Perpetual Corporate Trust Limited (ABN 99 000 341 533)</b> of Level 12, 123 Pitt Street, Sydney NSW 2000 Australia in its capacity as trustee of the Driver Australia One Trust.	<b>Trust Manager:</b> <b>Perpetual Nominees Limited (ABN 37 000 733 700)</b> of Level 12, 123 Pitt Street, Sydney NSW 2000 Australia in its capacity as the trust manager for the Driver Australia One Trust
<b>Sub Trust Manager:</b> <b>Volkswagen Financial Services Australia Pty Limited (ABN 20 097 071 460)</b> Level 1, 24 Muir Road, Chullora, NSW 2190	<b>Account Bank:</b> <b>Australia and New Zealand Banking Group Limited (ABN 11 005 357 522)</b> ANZ Tower 242 Pitt Street Sydney, NSW 2000 Australia
<b>Clearing Systems:</b> <b>Austraclear Limited</b> 30-32 Grosvenor Street. Sydney, NSW 2000	<b>Swap Counterparty:</b> <b>Hong Kong and Shanghai Banking Corporation Limited, Australia Branch (ABN 65 117 925 970)</b> Level 10, 580 George Street Sydney NSW 2000
<b>Servicer:</b> <b>Volkswagen Financial Services Australia Pty Limited (ABN 20 097 071 460)</b> Level 1, 24 Muir Road, Chullora, NSW 2190 email: ABSOperations.Australia@vwfs.com.au phone: +61 2 9695 6371	<b>Rating Agencies:</b> <b>Fitch Ratings</b> Attn.: James Zanesi Level 15, 77 King Street Sydney, NSW 2000 Australia email: australia.surveillance@fitchratings.com  <b>DBRS Inc.</b> Attn: ABS Surveillance, 35th Floor 140 Broadway New York, NY 10005 United States of America email: ABS_Surveillance@DBRS.com  <b>Standard &amp; Poor's</b> Attn.: Structured Finance Surveillance Level 45, 120 Collins Street Melbourne, VIC 3000 Australia email: mel_sfsurveillance@standardandpoors.com

## Transaction Events (I)

### Clean-Up Call Condition

Percentage of Current Outstanding Discounted Portfolio	57.77%	
Min. Percentage of Outstanding Discounted Portfolio	10.00%	The Clean-Up-Call Condition is expected to be reached in 02/2017.

### Clean-Up Call

Volkswagen Financial Services Australia Pty Ltd will have the option to exercise a Clean-Up Call and to repurchase the Purchased Loan Receivables from the Issuer at any time when the Aggregate Discounted Balance is less than 10 per cent. of the Aggregate Cutoff Date Discounted Balance provided that all payment obligations under the Notes will be thereby fulfilled.

Repurchase of Receivables	Number of contracts	% of Contracts	Outstanding Discounted Balance	% of Outstanding Discounted Balance	Re-Purchase Price
Current Period	-	-	- AUD	-	- AUD
Previous Periods	-	-	- AUD	-	- AUD
<b>Total</b>	-	-	- AUD	-	- AUD

If a repurchase of receivables occurred, it would only result from non-eligibility as of the respective Pool Cut Date (which has been discovered at a later stage).

### Transaction Party Replacements

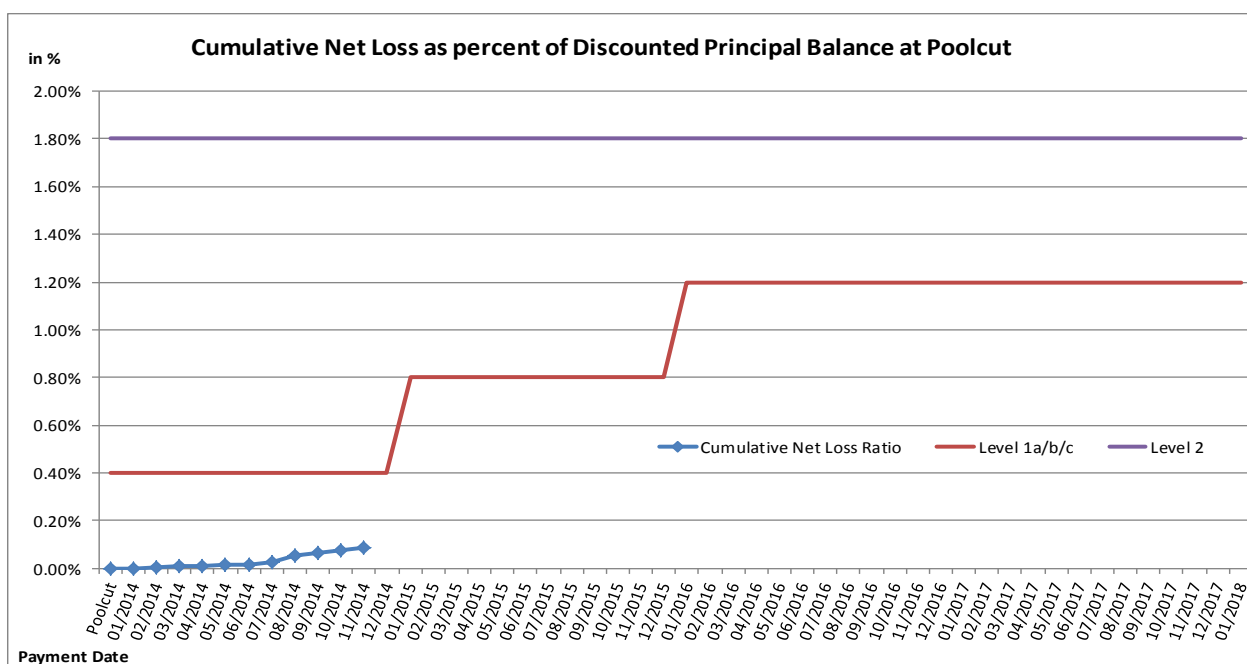
Capacity of Transaction Party	Date of Replacement	Reason for Replacement	Replaced Party	Replaced by

## Transaction Events (II)

### Credit Enhancement Increase Conditions

Level 1a Credit Enhancement Increase Condition - Cumulative Net Losses do not amount to 0.4% for any Payment Date prior to or during Dec 2014	<b>NO</b>
Level 1b Credit Enhancement Increase Condition - Cumulative Net Losses do not amount to 0.8% for any Payment Date from Jan 2015 but prior to or during Dec 2015	<b>NO</b>
Level 1c Credit Enhancement Increase Condition - Cumulative Net Losses do not amount to 1.2% for any Payment Date after Dec 2015	<b>NO</b>
Level 2 Credit Enhancement Increase Condition - Cumulative Net Losses do not amount to 1.8% for any Payment Date	<b>NO</b>

Net losses	Net Loss Amount
Net Salvage Loss registered in current Period	41,533.07 AUD
Cumulative Net Salvage Loss incl. current Period	429,727.14 AUD
Cumulative Net Salvage Loss as of the End of the Monthly Period	429,727.14 AUD
Discounted Balance as of Pool Cut Date	500,000,075.89 AUD
Cumulative Net Loss as percentage of Discounted Principal Balance at Pool Cut	0.08595%



### Transaction Events (III)

#### Account Bank:

Australia and New Zealand Banking Group Limited

Current Rating \*

Minimum required Rating (if no short term Rating available, the higher long term rating is applicable)

or

Fitch			S&P			DBRS		
Long Term	Short Term	Outlook	Long Term	Short Term	Outlook	Long Term	Short Term	Outlook
AA-	F1+	Stable	AA-	A-1+	Stable	AA	R-1H	Stable
A	F1	-	A	A-1	-	A	R1	-
A	F1	-	A+	-	-	A	R1	-

If the Account Bank ceases to have the Account Bank Required Rating it shall, at its own cost,  
(i) transfer the accounts to an Eligible Collateral Bank, or  
(ii) provide a guarantee from an Eligible Guarantor, or  
If none of the measures is taken within a given timespan, the Issuer may enter into new banking arrangements at its own initiative with another Account Bank.

(Please refer to the Prospectus for a complete description of the mechanism)

**Required Rating:** **Fulfilled**

#### Swap Counterparty

The Hongkong and Shanghai Banking Corporation Ltd

Current Rating \*

Minimum required Rating - Class A and Class B

or

Fitch			S&P			DBRS		
Long Term	Short Term	Outlook	Long Term	Short Term	Outlook	Long Term	Short Term	Outlook
AA-	F1+	Stable	AA-	A-1+	Stable	Not Rated	Not Rated	Not Rated
A	F1	-	A	A-1	-	A	-	-
A	F1	-	>A	-	-	A	-	-

If the Swap Bank falls below the above mentioned Minimum Rating (Level I) it shall provide Eligible Credit Support by means of Cash or certain types of Prime Debt Obligations

If the Swap Bank ceases to have the even lower Rating as an Eligible Swap Counterparty (Level II) it shall, at its own cost,  
(i) transfer all rights and obligations under the Swap Agreement to another Eligible Swap Partner or  
(ii) provide a guarantee from an Eligible Guarantor.  
If none of the measures is taken within a given timespan, the Issuer may enter into new arrangements at its own initiative with another Swap Bank.

(Please refer to the Prospectus for a complete description of the mechanism)

**Required Rating:** **Fulfilled**

#### Servicer

Volkswagen Financial Services Australia Pty Ltd

If the Monthly Remittance Condition is satisfied, VWFS Australia, as the Servicer, is required to pay collections of the Purchased Receivables (including proceeds from the disposition of any Financed Objects) received by it during each Monthly Period into the Distribution Account in a single deposit no later than the Payment Date for that Monthly Period.

If the Monthly Remittance Condition is not met, the Servicer must remit collections received by it in respect of the Purchased Receivables in accordance with the procedure outlined in detail in "ADMINISTRATION OF THE PURCHASED RECEIVABLES UNDER THE SERVICING AGREEMENT - Commingling".

**Monthly  
Remittance  
Condition:**

**Not fulfilled**

# Information regarding the Notes I

Rating at Issue Date	Class A	Class B
DBRS	AAA (sf)	A (high) (sf)
S&P	AAA(sf)	A+(sf)
Fitch	AAAsf	A+sf

Current Rating	Class A	Class B
DBRS	AAA (sf)	A (high) (sf)
S&P	AAA(sf)	A+(sf)
Fitch	AAAsf	AAsf

Information on Notes	Class A	Class B
Legal maturity date	1/12/2021	1/12/2021
Scheduled Clean Up Call	Feb 2017	Feb 2017
ISIN:	AU0000DAOHA1	AU0000DAOHB9
Common Code:	099515716	099515732
Nominal Amount	100,000.00 AUD	100,000.00 AUD

Information on Interest	Class A	Class B
Spread/ Margin	85 bps	180 bps
Index Rate	1-Month-BBSW	1-Month-BBSW
Fixed/Floating	floating	floating
Current Coupon	1-Month-BBSW + 85	1-Month-BBSW + 180
Day Count Convention	actual/365	actual/365

## Information regarding the Notes II

Monthly Period:	10/2014
Payment Date:	21/11/2014
Interest Accrual Period (from/until)	from 21/10/2014 until 21/11/2014
Days accrued	31
Index Rate	1-Month-BBSW
Base Interest Rate:	2.6300%
Day Count Convention	actual/365

Interest Payments	Class A	Class B
Total Interest Amount of the Reporting Period	691,380.04 AUD	97,824.11 AUD
Paid Interest	691,380.04 AUD	97,824.11 AUD

Unpaid Interest	Class A	Class B
Unpaid Interest in the Reporting Period	- AUD	- AUD
Cumulative unpaid Interest	- AUD	- AUD

Note Balance	Class A	Class B
Note Balance as of Poolcut	433,000,000.00 AUD	26,000,000.00 AUD
Note Balance as of the Beginning of the Period	233,920,759.10 AUD	26,000,000.00 AUD
Redemption Amount per Class	17,373,865.20 AUD	- AUD
<b>Class Balance as of the End of the Period</b>	<b>216,546,893.90 AUD</b>	<b>26,000,000.00 AUD</b>

Payments to Investors per note	Class A	Class B
Interest Per Note	159.67 AUD	376.25 AUD
Principal Repayment by note	4,012.44 AUD	- AUD
Number of Notes	4,330	260
Note Factor	0.500108	1.000000

Overcollateralisation Percentage	Class A	Class B
Initial OC Percentage at Poolcut	13.4000%	8.2000%
Current OC Percentage	25.0322%	16.0311%
Target OC Percentage	30.0000%	20.0000%

Subordinated Loan		
Balance as of the Beginning of the Period		34,000,075.89 AUD
Redemption		- AUD
Balance as of the End of the Period		34,000,075.89 AUD

## Credit Enhancement

Credit Enhancement as of Poolcut Date	% of Aggregate Discounted Balance	Value
Class B Note	5.20%	26,000,000.00 AUD
Subordinated Loan	6.80%	34,000,075.89 AUD
Overcollateralisation via Collateral Loan	1.40%	7,000,000.00 AUD
Cash Collateral Account	1.20%	6,000,000.00 AUD

Cash Collateral Account (CCA)	Value	in % of Outstanding Discounted Loan Balance as of Poolcut Date
<b>Initial Balance at Poolcut</b>	6,000,000.00 AUD	1.20%
<b>Targeted Balance</b>	6,000,000.00 AUD	1.20%
<b>Balance as of the Beginning of the Period</b>	6,000,000.00 AUD	1.20%
Payment from CCA	- AUD	0.00%
Payment to CCA	- AUD	0.00%
<b>Balance as of the End of the Period</b>	6,000,000.00 AUD	1.20%

## Calculation of Credit Enhancement

Initially, Driver Australia One's Credit Enhancement consists of the respective Note Issue in comparison to the Discounted Principal Balance as of Poolcut, minus any Senior Debt Issuance. This 'Overcollateralisation' (i.e. Credit Enhancement excluding the Cash Collateral Account) is specific for each Note Series and increases with its seniority.

Subsequently, the 'Overcollateralisation' is calculated (as an Overcollateralisation Percentage) on a monthly basis, all on end of month figures. Considering the seniority of the respective Note Series, redemption is made until a Target Overcollateralisation Percentage has been reached. All remaining funds will be used to perform payments in the more junior positions of the Order of Priority.

The Target OC percentages for each Note Class are determined subject to 3 items:

- They will increase in 2 steps in case the Cumulative Net Loss Ratio exceeds a certain level and Credit Enhancement Increase Condition is met.
- They will increase to 100% if the Aggregate Discounted Principal Balance falls below 10.00% of the Aggregate Discounted Principal Balance at Cut-Off Date (without a Clean-Up Call being exercised).
- A Foreclosure Event causes the transaction to switch into sequential payment mode, in which case the OC Percentages will not determine the maximum redemption amount and may be exceeded.

In addition, there is the 'General Cash Reserve', in the form of a Cash Collateral Account, which is in principle to the benefit of all Tranches over the entire lifetime of the transaction.

## Swap Fixing / Waterfall

Amortising Interest Rate Swap	Class A	Class B
Initial Principal	433,000,000.00 AUD	26,000,000.00 AUD
Underlying Principal for Reporting Period	233,920,759.10 AUD	26,000,000.00 AUD
Paying Leg	Fixed Interest Rate	Fixed Interest Rate
Receiving Leg	Floating Interest Rate	Floating Interest Rate
Net Swap Payments - Net Swap Receipts	36,698.32 AUD	6,392.56 AUD

Available Distribution Amount Calculation	Payment to waterfall position	Remaining Amount
1) i) Available Collections Amount from Contracts	18,284,331.02 AUD	18,284,331.02 AUD
1) ii) Available Collections - Interest on Trust Account	58,954.65 AUD	18,343,285.67 AUD
2) Drawings From Cash Collateral Account	- AUD	18,343,285.67 AUD
3) i) Swap Receipts - Class A	- AUD	18,343,285.67 AUD
3) ii) Swap Receipts - Class B	- AUD	18,343,285.67 AUD
4) Damages and Indemnity Payments to Issuer	- AUD	18,343,285.67 AUD
5) Other Reimbursement Amounts	173,553.00 AUD	18,516,838.67 AUD
Remaining Rounding Amount (M-1)	24.50 AUD	18,516,863.17 AUD

Waterfall	Payment to waterfall position	Remaining Amount
Available Distribution Amount	- AUD	18,516,863.17 AUD
1) Trust Beneficiary \$1	(1.00 AUD)	18,516,862.17 AUD
2) Taxes	- AUD	18,516,862.17 AUD
3) Fees, Costs & Charges - Issuer and Security Trustee	(15,705.33 AUD)	18,501,156.84 AUD
4. i) Monthly Servicer Fee - Servicer	(280,310.76 AUD)	18,220,846.08 AUD
4. ii) Unitholder Costs - VWFSA	(5,743.00 AUD)	18,215,103.08 AUD
4. iii) Trust Manager's Fee - Trust Manager	(8,937.50 AUD)	18,206,165.58 AUD
4. iv) Sub-Trust Manager's Fee - Sub-Trust Manager	- AUD	18,206,165.58 AUD
5. a) Net Swap Payments - Class A Notes	(36,698.32 AUD)	18,169,467.26 AUD
5. b) Net Swap Payments - Class B Notes	(6,392.56 AUD)	18,163,074.70 AUD
6. a) Interest accrued in prev. month - Class A	(691,380.04 AUD)	17,471,694.66 AUD
6. b) Interest Shortfalls from prior months - Class A	- AUD	17,471,694.66 AUD
7. a) Interest accrued in prev. month - Class B	(97,824.11 AUD)	17,373,870.55 AUD
7. b) Interest Shortfalls from prior months - Class B	- AUD	17,373,870.55 AUD
8) Payment to Cash Collateral Account	- AUD	17,373,870.55 AUD
9) Principal Payment - Class A	(17,373,865.20 AUD)	5.35 AUD
10) Principal Payment - Class B	- AUD	5.35 AUD
Remaining Rounding Amount (Current Period)	(5.35 AUD)	- AUD
11) Penalties, Costs, Expenses, Damages, Losses or Liabilities	- AUD	- AUD
12) Other Payment to Swap Counterparties	- AUD	- AUD
13) Subordinated Loan Accrued and Unpaid Interest	- AUD	- AUD
14) Subordinated Loan Principal	- AUD	- AUD
15) Collateral Loan Accrued and Unpaid Interest	- AUD	- AUD
16) Collateral Loan Principal	- AUD	- AUD
17) Issuer Subordinated Notes Repayment to VWFSA	- AUD	- AUD
18) Final Service Fee to VWFSA	- AUD	- AUD

## CRD Retention / Retention of Net Economic Interest

### Retention Amount at Poolcut

Type of Asset	Number of Contracts	Percentage of Contracts	Outstanding Nominal Balance	Percentage of Nominal Balance
Portfolio sold to SPV	16,499	93.10%	547,808,908.75 AUD	93.00%
Retention of VWFSa	1,223	6.90%	41,231,367.34 AUD	7.00%
<b>Total</b>	<b>17,722</b>	<b>100.00%</b>	<b>589,040,276.09 AUD</b>	<b>100.00%</b>

Retention Amounts		
Minimum Retention	29,452,013.80 AUD	5.00%
Actual Retention	41,231,367.34 AUD	7.00%

### Retention Amount End of Reporting Period

Type of Asset	Number of Contracts	Percentage of Contracts	Outstanding Nominal Balance	Percentage of Nominal Balance
Portfolio sold to SPV	11,954	93.11%	311,158,879.10 AUD	92.93%
Retention of VWFSa	885	6.89%	23,675,168.97 AUD	7.07%
<b>Total</b>	<b>12,839</b>	<b>100.00%</b>	<b>334,834,048.07 AUD</b>	<b>100.00%</b>

Retention Amounts		
Minimum Retention	16,376,783.11 AUD	5.00%
Actual Retention	23,675,168.97 AUD	7.07%

In its capacity as originator and original lender, VWFSa complies with the retention requirements of a material net economic interest in accordance with § 122a CRD.

By adhering to option c) of the direction, VWFSa will keep the exposures designated for retention on its balance sheet on an ongoing basis.

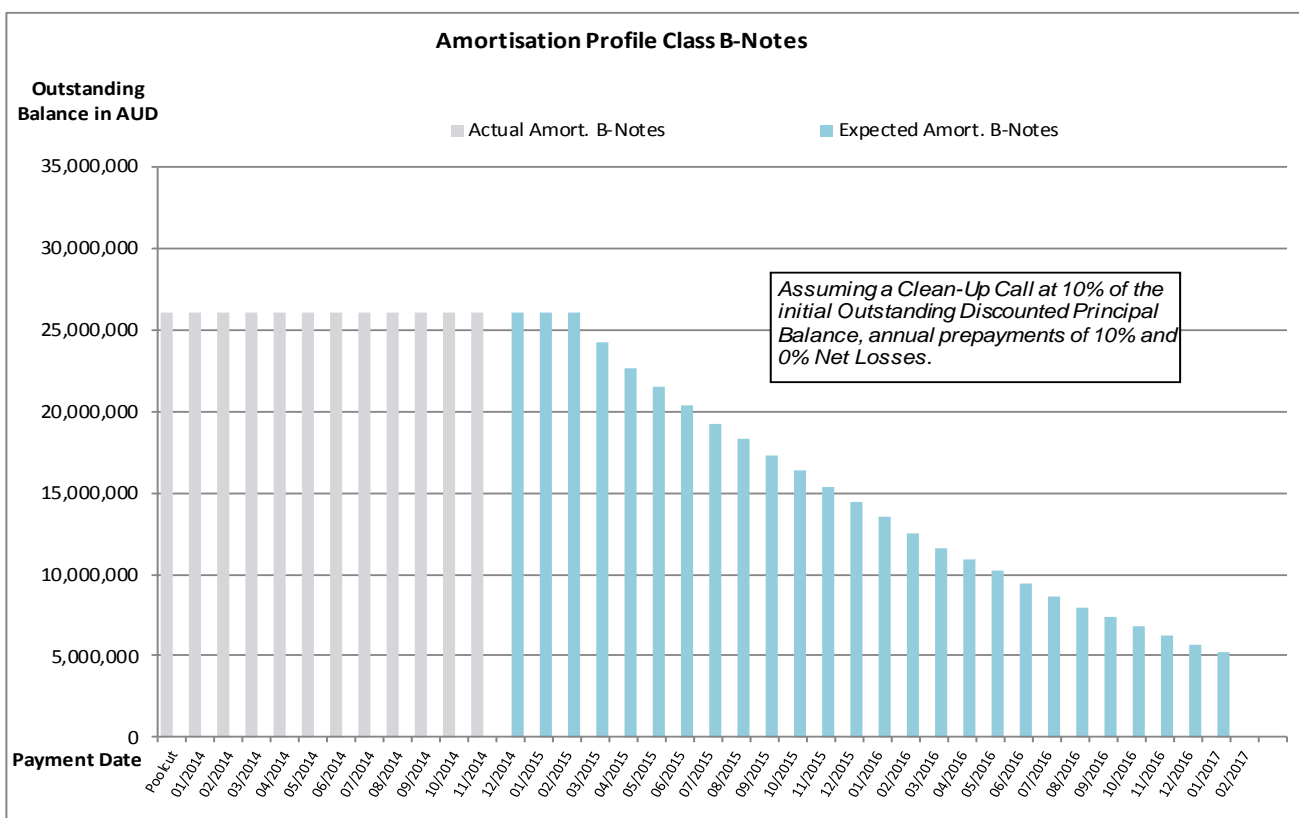
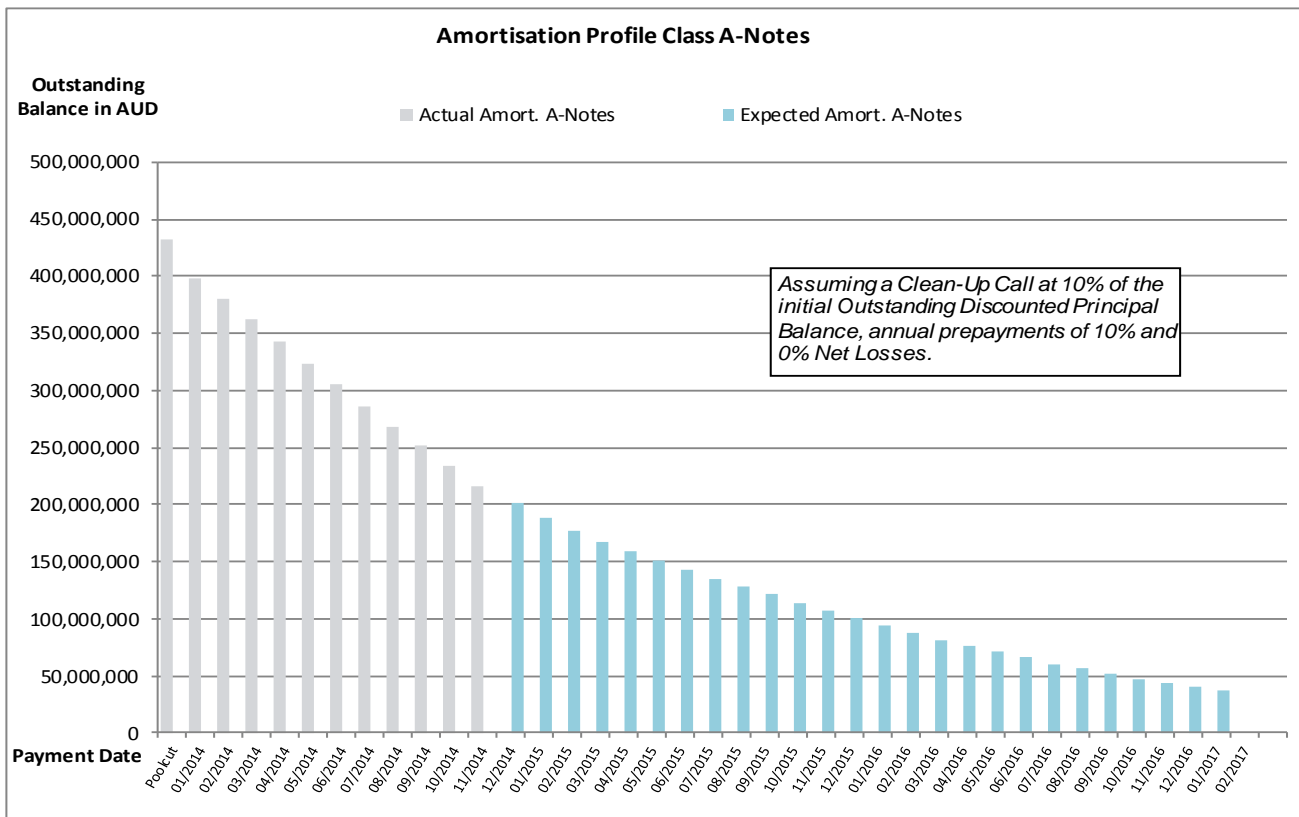
The latest end of month level of retention will be published on a monthly basis within the Investor Report.

## Amortisation Profile I

Note Class	Class A		Class B	
WAL	At Closing: 1.31 yrs	At Closing: 1.31 yrs	At Closing: 2.28 yrs	At Closing: 2.28 yrs
Payment Date	Actual Note Balance	Forecasted Note Balance	Actual Note Balance	Forecasted Note Balance
Poolcut	433,000,000.00 AUD	- AUD	26,000,000.00 AUD	- AUD
01/2014	397,736,090.30 AUD	- AUD	26,000,000.00 AUD	- AUD
02/2014	380,246,960.50 AUD	- AUD	26,000,000.00 AUD	- AUD
03/2014	361,652,165.20 AUD	- AUD	26,000,000.00 AUD	- AUD
04/2014	342,480,613.90 AUD	- AUD	26,000,000.00 AUD	- AUD
05/2014	323,990,821.10 AUD	- AUD	26,000,000.00 AUD	- AUD
06/2014	305,358,571.30 AUD	- AUD	26,000,000.00 AUD	- AUD
07/2014	285,891,843.90 AUD	- AUD	26,000,000.00 AUD	- AUD
08/2014	267,389,364.20 AUD	- AUD	26,000,000.00 AUD	- AUD
09/2014	251,132,422.50 AUD	- AUD	26,000,000.00 AUD	- AUD
10/2014	233,920,759.10 AUD	- AUD	26,000,000.00 AUD	- AUD
11/2014	216,546,893.90 AUD	- AUD	26,000,000.00 AUD	- AUD
12/2014	-	202,066,429.90 AUD	-	26,000,000.00 AUD
01/2015	-	188,769,508.63 AUD	-	26,000,000.00 AUD
02/2015	-	176,535,627.02 AUD	-	26,000,000.00 AUD
03/2015	-	166,576,812.95 AUD	-	24,268,196.92 AUD
04/2015	-	158,477,756.04 AUD	-	22,639,679.43 AUD
05/2015	-	150,245,578.02 AUD	-	21,463,654.00 AUD
06/2015	-	142,244,170.05 AUD	-	20,320,595.72 AUD
07/2015	-	134,620,463.58 AUD	-	19,231,494.80 AUD
08/2015	-	127,887,089.94 AUD	-	18,269,584.28 AUD
09/2015	-	120,990,338.50 AUD	-	17,284,334.07 AUD
10/2015	-	114,262,907.73 AUD	-	16,323,272.53 AUD
11/2015	-	107,578,354.81 AUD	-	15,368,336.41 AUD
12/2015	-	100,754,317.49 AUD	-	14,393,473.93 AUD
01/2016	-	94,529,083.39 AUD	-	13,504,154.77 AUD
02/2016	-	87,280,538.56 AUD	-	12,468,648.36 AUD
03/2016	-	81,380,603.33 AUD	-	11,625,800.48 AUD
04/2016	-	76,186,066.39 AUD	-	10,883,723.77 AUD
05/2016	-	71,470,380.88 AUD	-	10,210,054.41 AUD
06/2016	-	66,133,670.94 AUD	-	9,447,667.28 AUD
07/2016	-	60,544,361.93 AUD	-	8,649,194.57 AUD
08/2016	-	55,911,169.03 AUD	-	7,987,309.87 AUD
09/2016	-	51,736,513.76 AUD	-	7,390,930.54 AUD
10/2016	-	47,687,932.18 AUD	-	6,812,561.74 AUD
11/2016	-	43,706,937.95 AUD	-	6,243,848.27 AUD
12/2016	-	39,859,636.75 AUD	-	5,694,233.83 AUD
01/2017	-	36,643,368.83 AUD	-	5,234,766.98 AUD
02/2017	-	- AUD	-	- AUD

\*Based on the following assumptions: CPR of 10%, Net Losses of 0% and Clean Up Call at 10% of the original outstanding portfolio

## Amortisation Profile II

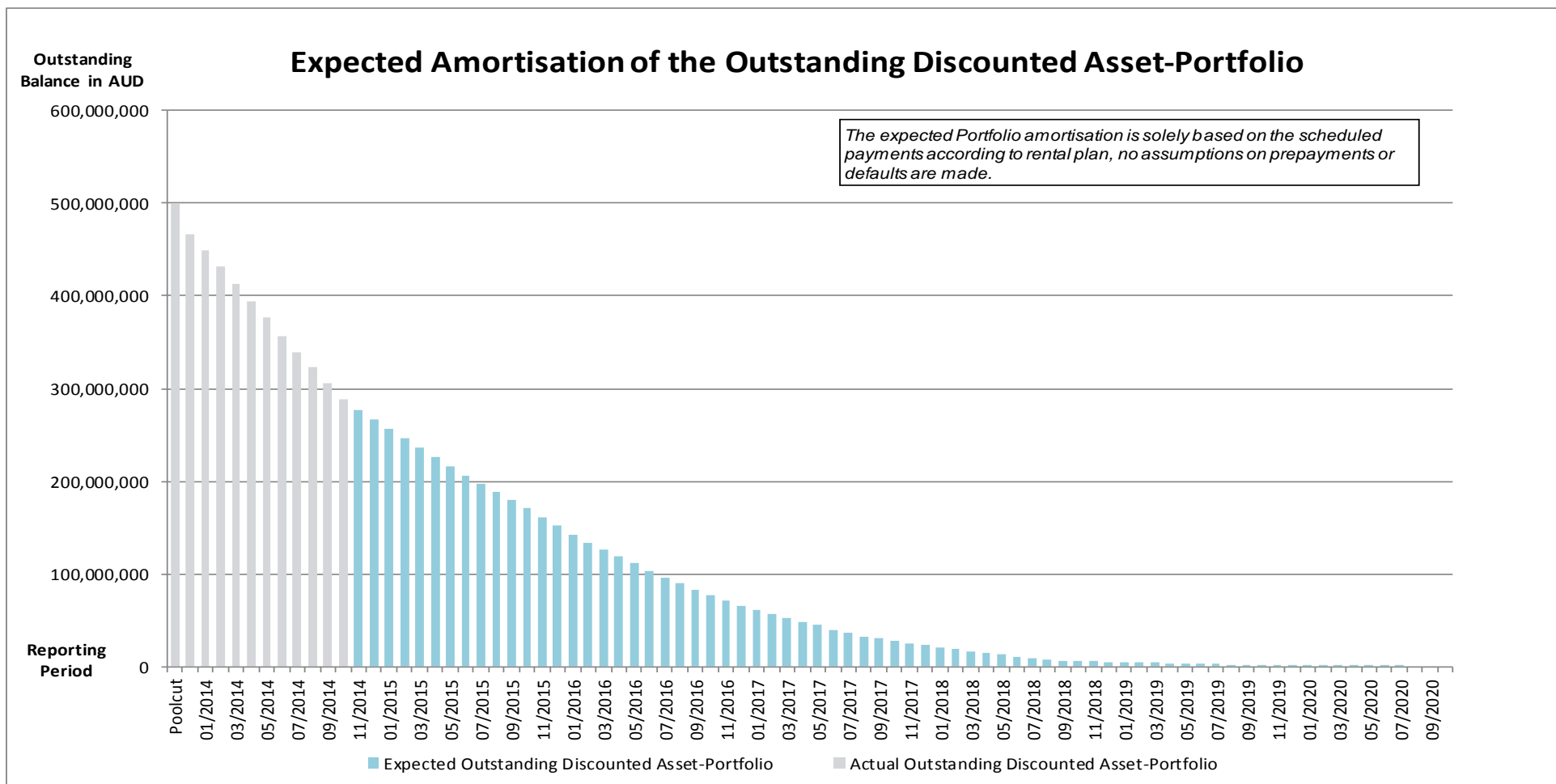


## Run Out Schedule I

End of Collection Period	Interest	Principal	Nominal Instalments
arrears	29,782.74 AUD	1,172,197.73 AUD	1,201,980.47 AUD
11/2014	1,228,925.22 AUD	10,681,254.09 AUD	11,910,179.31 AUD
12/2014	1,195,690.39 AUD	10,871,804.80 AUD	12,067,495.19 AUD
01/2015	1,151,804.08 AUD	10,065,430.89 AUD	11,217,234.97 AUD
02/2015	1,109,036.82 AUD	9,589,740.39 AUD	10,698,777.21 AUD
03/2015	1,069,028.72 AUD	9,915,754.55 AUD	10,984,783.27 AUD
04/2015	1,026,507.85 AUD	10,310,270.70 AUD	11,336,778.55 AUD
05/2015	982,022.39 AUD	10,159,945.20 AUD	11,141,967.59 AUD
06/2015	937,980.85 AUD	9,777,899.14 AUD	10,715,879.99 AUD
07/2015	895,833.19 AUD	8,590,672.72 AUD	9,486,505.91 AUD
08/2015	858,771.46 AUD	9,013,050.15 AUD	9,871,821.61 AUD
09/2015	819,992.55 AUD	8,920,979.82 AUD	9,740,972.37 AUD
10/2015	781,133.93 AUD	9,024,938.14 AUD	9,806,072.07 AUD
11/2015	742,241.19 AUD	9,421,452.64 AUD	10,163,693.83 AUD
12/2015	701,300.49 AUD	8,633,583.19 AUD	9,334,883.68 AUD
01/2016	663,693.31 AUD	10,466,059.88 AUD	11,129,753.19 AUD
02/2016	618,114.30 AUD	8,445,363.76 AUD	9,063,478.06 AUD
03/2016	581,466.93 AUD	7,435,450.93 AUD	8,016,917.86 AUD
04/2016	549,137.35 AUD	6,775,801.57 AUD	7,324,938.92 AUD
05/2016	519,811.69 AUD	7,953,374.10 AUD	8,473,185.79 AUD
06/2016	485,279.48 AUD	8,533,077.23 AUD	9,018,356.71 AUD
07/2016	448,351.90 AUD	7,049,824.77 AUD	7,498,176.67 AUD
08/2016	417,891.08 AUD	6,387,551.69 AUD	6,805,442.77 AUD
09/2016	390,067.26 AUD	6,287,272.43 AUD	6,677,339.69 AUD
10/2016	362,719.17 AUD	6,285,934.54 AUD	6,648,653.71 AUD
11/2016	335,339.65 AUD	6,165,416.21 AUD	6,500,755.86 AUD
12/2016	308,486.67 AUD	5,147,503.68 AUD	5,455,990.35 AUD
01/2017	286,079.08 AUD	5,205,449.61 AUD	5,491,528.69 AUD
02/2017	263,407.27 AUD	4,355,341.01 AUD	4,618,748.28 AUD
03/2017	244,450.64 AUD	4,416,485.39 AUD	4,660,936.03 AUD
04/2017	225,212.47 AUD	3,239,150.58 AUD	3,464,363.05 AUD
05/2017	211,102.42 AUD	3,895,555.25 AUD	4,106,657.67 AUD
06/2017	194,240.90 AUD	4,545,670.79 AUD	4,739,911.69 AUD
07/2017	174,443.67 AUD	3,695,137.05 AUD	3,869,580.72 AUD
08/2017	158,373.20 AUD	3,571,450.70 AUD	3,729,823.90 AUD
09/2017	142,815.75 AUD	2,754,334.10 AUD	2,897,149.85 AUD
10/2017	130,826.69 AUD	2,570,674.55 AUD	2,701,501.24 AUD
11/2017	119,696.64 AUD	2,263,418.66 AUD	2,383,115.30 AUD
12/2017	109,838.79 AUD	2,223,768.45 AUD	2,333,607.24 AUD
01/2018	100,165.21 AUD	2,290,106.43 AUD	2,390,271.64 AUD
02/2018	90,189.19 AUD	2,091,723.17 AUD	2,181,912.36 AUD
03/2018	81,077.99 AUD	2,284,973.84 AUD	2,366,051.83 AUD
04/2018	71,124.46 AUD	1,920,281.03 AUD	1,991,405.49 AUD
05/2018	62,759.94 AUD	1,821,557.74 AUD	1,884,317.68 AUD
06/2018	54,824.89 AUD	1,860,172.80 AUD	1,914,997.69 AUD
07/2018	46,722.10 AUD	1,849,700.64 AUD	1,896,422.74 AUD
08/2018	38,718.61 AUD	1,867,796.55 AUD	1,906,515.16 AUD
09/2018	30,679.64 AUD	459,889.78 AUD	490,569.42 AUD
10/2018	28,676.26 AUD	487,222.02 AUD	515,898.28 AUD
11/2018	26,579.17 AUD	446,027.01 AUD	472,606.18 AUD

12/2018	24,636.43 AUD	435,793.04 AUD	460,429.47 AUD
01/2019	22,738.11 AUD	428,077.07 AUD	450,815.18 AUD
02/2019	20,873.29 AUD	417,890.38 AUD	438,763.67 AUD
03/2019	19,053.01 AUD	404,335.31 AUD	423,388.32 AUD
04/2019	17,291.79 AUD	390,537.20 AUD	407,828.99 AUD
05/2019	15,590.64 AUD	381,741.69 AUD	397,332.33 AUD
06/2019	13,927.65 AUD	366,137.08 AUD	380,064.73 AUD
07/2019	12,332.75 AUD	341,496.21 AUD	353,828.96 AUD
08/2019	10,845.31 AUD	323,987.89 AUD	334,833.20 AUD
09/2019	9,433.93 AUD	308,819.68 AUD	318,253.61 AUD
10/2019	8,088.86 AUD	290,898.39 AUD	298,987.25 AUD
11/2019	6,821.56 AUD	268,254.00 AUD	275,075.56 AUD
12/2019	5,653.15 AUD	243,060.90 AUD	248,714.05 AUD
01/2020	4,594.27 AUD	217,763.70 AUD	222,357.97 AUD
02/2020	3,645.83 AUD	192,021.78 AUD	195,667.61 AUD
03/2020	2,809.33 AUD	172,856.54 AUD	175,665.87 AUD
04/2020	2,056.37 AUD	150,074.80 AUD	152,131.17 AUD
05/2020	1,402.55 AUD	129,504.98 AUD	130,907.53 AUD
06/2020	838.49 AUD	94,797.95 AUD	95,636.44 AUD
07/2020	425.55 AUD	57,993.93 AUD	58,419.48 AUD
08/2020	172.90 AUD	39,697.08 AUD	39,869.98 AUD
<b>Total</b>	<b>22,305,647.41 AUD</b>	<b>288,853,231.69 AUD</b>	<b>311,158,879.10 AUD</b>

## Run Out Schedule II



## Outstanding Contracts I - Overview

Total Portfolio as of Poolcut Date			Product Type					
			Hire Purchase		Chattel Mortgage		Consumer Loan	
Contract Status Development	Number of Contracts	Outstanding Discounted Balance	Number of Contracts	Outstanding Discounted Balance	Number of Contracts	Outstanding Discounted Balance	Number of Contracts	Outstanding Discounted Balance
Normal	16,499	500,000,075.89 AUD	2,970	92,130,371.43 AUD	5,094	151,176,375.85 AUD	8,435	256,693,328.61 AUD
In Advance	-	- AUD	-	- AUD	-	- AUD	-	- AUD
In Arrears	-	- AUD	-	- AUD	-	- AUD	-	- AUD
Paid out/Matured	-	- AUD	-	- AUD	-	- AUD	-	- AUD
Early Payout	-	- AUD	-	- AUD	-	- AUD	-	- AUD
Gross Salvage	-	- AUD	-	- AUD	-	- AUD	-	- AUD
Net Salvage	-	- AUD	-	- AUD	-	- AUD	-	- AUD
<b>Total</b>	<b>16,499</b>	<b>500,000,075.89 AUD</b>	<b>2,970</b>	<b>92,130,371.43 AUD</b>	<b>5,094</b>	<b>151,176,375.85 AUD</b>	<b>8,435</b>	<b>256,693,328.61 AUD</b>

Total Portfolio as of Previous Month			Product Type					
			Hire Purchase		Chattel Mortgage		Consumer Loan	
Contract Status Development	Number of Contracts	Outstanding Discounted Balance	Number of Contracts	Outstanding Discounted Balance	Number of Contracts	Outstanding Discounted Balance	Number of Contracts	Outstanding Discounted Balance
Normal	11,946	294,508,676.02 AUD	1,712	43,762,889.51 AUD	3,361	81,441,895.40 AUD	6,873	169,303,891.11 AUD
In Advance	234	5,085,249.49 AUD	14	234,403.18 AUD	42	1,029,991.98 AUD	178	3,820,854.33 AUD
In Arrears	240	6,058,989.73 AUD	71	1,579,720.20 AUD	102	2,466,977.29 AUD	67	2,012,292.24 AUD
Paid out/Matured	1,130	- AUD	354	- AUD	476	- AUD	300	- AUD
Early Payout	2,921	- AUD	814	- AUD	1,098	- AUD	1,009	- AUD
Gross Salvage	5	140,645.61 AUD	1	62,418.51 AUD	3	55,468.06 AUD	1	22,759.04 AUD
Net Salvage	23	386,844.80 AUD	4	92,726.49 AUD	12	217,787.81 AUD	7	76,330.50 AUD
<b>Total</b>	<b>16,499</b>	<b>306,180,405.65 AUD</b>	<b>2,970</b>	<b>45,732,157.89 AUD</b>	<b>5,094</b>	<b>85,212,120.54 AUD</b>	<b>8,435</b>	<b>175,236,127.22 AUD</b>

Total Portfolio as of Current Reporting Period			Product Type					
			Hire Purchase		Chattel Mortgage		Consumer Loan	
Contract Status Development	Number of Contracts	Outstanding Discounted Balance	Number of Contracts	Outstanding Discounted Balance	Number of Contracts	Outstanding Discounted Balance	Number of Contracts	Outstanding Discounted Balance
Normal	11,450	277,759,900.46 AUD	1,606	40,313,209.64 AUD	3,141	75,764,404.18 AUD	6,703	161,682,286.64 AUD
In Advance	249	5,163,812.34 AUD	12	196,708.55 AUD	42	939,133.32 AUD	195	4,027,970.47 AUD
In Arrears	253	5,884,197.24 AUD	57	1,236,525.99 AUD	120	2,544,097.46 AUD	76	2,103,573.79 AUD
Paid out/Matured	1,303	- AUD	405	- AUD	561	- AUD	337	- AUD
Early Payout	3,216	- AUD	885	- AUD	1,215	- AUD	1,116	- AUD
Gross Salvage	2	45,321.65 AUD	-	- AUD	1	22,562.61 AUD	1	22,759.04 AUD
Net Salvage	26	428,377.87 AUD	5	123,354.39 AUD	14	228,692.98 AUD	7	76,330.50 AUD
<b>Total</b>	<b>16,499</b>	<b>289,281,609.56 AUD</b>	<b>2,970</b>	<b>41,869,798.57 AUD</b>	<b>5,094</b>	<b>79,498,890.55 AUD</b>	<b>8,435</b>	<b>167,912,920.44 AUD</b>

## Outstanding Contracts I - Overview

Total Portfolio as of Poolcut Date			Balloon				Type of Car			
Contract Status Development	Number of Contracts	Outstanding Discounted Balance	Balloon		No Balloon		New Vehicle		Used Vehicle	
			Number of Contracts	Outstanding Discounted Balance	Number of Contracts	Outstanding Discounted Balance	Number of Contracts	Outstanding Discounted Balance	Number of Contracts	Outstanding Discounted Balance
Normal	16,499	500,000,075.89 AUD	8,184	302,414,678.04 AUD	8,315	197,585,397.85 AUD	13,968	438,595,554.40 AUD	2,531	61,404,521.49 AUD
In Advance	-	- AUD	-	- AUD	-	- AUD	-	- AUD	-	- AUD
In Arrears	-	- AUD	-	- AUD	-	- AUD	-	- AUD	-	- AUD
Paid out/Matured	-	- AUD	-	- AUD	-	- AUD	-	- AUD	-	- AUD
Early Payout	-	- AUD	-	- AUD	-	- AUD	-	- AUD	-	- AUD
Gross Salvage	-	- AUD	-	- AUD	-	- AUD	-	- AUD	-	- AUD
Net Salvage	-	- AUD	-	- AUD	-	- AUD	-	- AUD	-	- AUD
<b>Total</b>	<b>16,499</b>	<b>500,000,075.89 AUD</b>	<b>8,184</b>	<b>302,414,678.04 AUD</b>	<b>8,315</b>	<b>197,585,397.85 AUD</b>	<b>13,968</b>	<b>438,595,554.40 AUD</b>	<b>2,531</b>	<b>61,404,521.49 AUD</b>

Total Portfolio as of Previous Month			Balloon				Type of Car			
Contract Status Development	Number of Contracts	Outstanding Discounted Balance	Balloon		No Balloon		New Vehicle		Used Vehicle	
			Number of Contracts	Outstanding Discounted Balance	Number of Contracts	Outstanding Discounted Balance	Number of Contracts	Outstanding Discounted Balance	Number of Contracts	Outstanding Discounted Balance
Normal	11,946	294,508,676.02 AUD	5,657	176,707,327.94 AUD	6,289	117,801,348.08 AUD	10,210	260,257,576.24 AUD	1,736	34,251,099.78 AUD
In Advance	234	5,085,249.49 AUD	80	2,167,703.28 AUD	154	2,917,546.21 AUD	185	4,314,371.15 AUD	49	770,878.34 AUD
In Arrears	240	6,058,989.73 AUD	167	4,472,291.22 AUD	73	1,586,698.51 AUD	193	5,105,711.68 AUD	47	953,278.05 AUD
Paid out/Matured	1,130	- AUD	637	- AUD	493	- AUD	924	- AUD	206	- AUD
Early Payout	2,921	- AUD	1,628	- AUD	1,293	- AUD	2,438	- AUD	483	- AUD
Gross Salvage	5	140,645.61 AUD	3	113,583.84 AUD	2	27,061.77 AUD	4	136,342.88 AUD	1	4,302.73 AUD
Net Salvage	23	386,844.80 AUD	12	273,680.01 AUD	11	113,164.79 AUD	14	290,764.78 AUD	9	96,080.02 AUD
<b>Total</b>	<b>16,499</b>	<b>306,180,405.65 AUD</b>	<b>8,184</b>	<b>183,734,586.29 AUD</b>	<b>8,315</b>	<b>122,445,819.36 AUD</b>	<b>13,968</b>	<b>270,104,766.73 AUD</b>	<b>2,531</b>	<b>36,075,638.92 AUD</b>

Total Portfolio as of Current Reporting Period			Balloon				Type of Car			
Contract Status Development	Number of Contracts	Outstanding Discounted Balance	Balloon		No Balloon		New Vehicle		Used Vehicle	
			Number of Contracts	Outstanding Discounted Balance	Number of Contracts	Outstanding Discounted Balance	Number of Contracts	Outstanding Discounted Balance	Number of Contracts	Outstanding Discounted Balance
Normal	11,450	277,759,900.46 AUD	5,391	166,569,895.10 AUD	6,059	111,190,005.36 AUD	9,788	245,492,153.90 AUD	1,662	32,267,746.56 AUD
In Advance	249	5,163,812.34 AUD	81	2,116,884.11 AUD	168	3,046,928.23 AUD	203	4,482,805.06 AUD	46	681,007.28 AUD
In Arrears	253	5,884,197.24 AUD	162	3,777,600.29 AUD	91	2,106,596.95 AUD	206	4,985,181.44 AUD	47	899,015.80 AUD
Paid out/Matured	1,303	- AUD	739	- AUD	564	- AUD	1,068	- AUD	235	- AUD
Early Payout	3,216	- AUD	1,795	- AUD	1,421	- AUD	2,684	- AUD	532	- AUD
Gross Salvage	2	45,321.65 AUD	1	22,562.61 AUD	1	22,759.04 AUD	2	45,321.65 AUD	-	- AUD
Net Salvage	26	428,377.87 AUD	15	315,213.08 AUD	11	113,164.79 AUD	17	332,297.85 AUD	9	96,080.02 AUD
<b>Total</b>	<b>16,499</b>	<b>289,281,609.56 AUD</b>	<b>8,184</b>	<b>172,802,155.19 AUD</b>	<b>8,315</b>	<b>116,479,454.37 AUD</b>	<b>13,968</b>	<b>255,337,759.90 AUD</b>	<b>2,531</b>	<b>33,943,849.66 AUD</b>

## Outstanding Contracts II - Collections

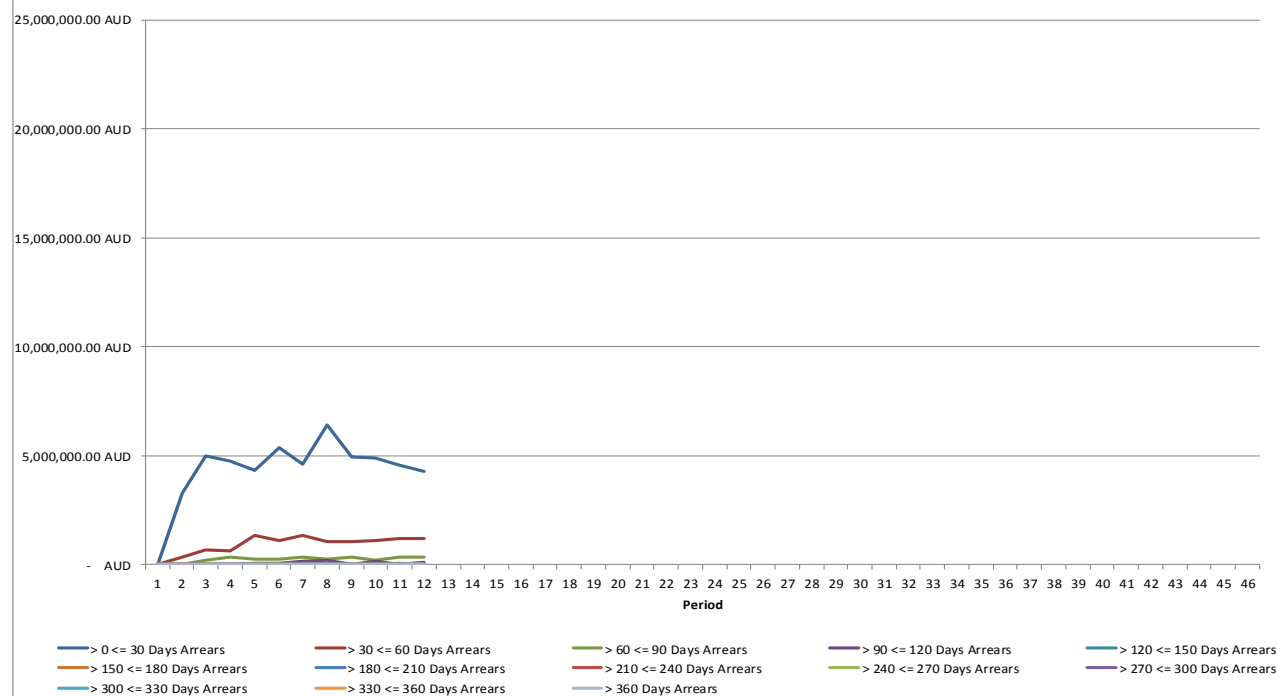
Collections This Reporting Month by Status	Change in Contract Status' From Last Month	Number of Contracts This Month	Collections
Normal	(496)	11,450	9,508,538.76 AUD
In Advance	15	249	369,001.16 AUD
In Arrears	13	253	303,376.34 AUD
Paid out/Matured	173	1,303	1,855,224.22 AUD
Early Payout	295	3,216	6,169,145.04 AUD
Gross Salvage	(3)	2	(0.22 AUD)
Net Salvage	3	26	79,045.72 AUD
<b>Total</b>	<b>-</b>	<b>16,499</b>	<b>18,284,331.02 AUD</b>

Development of Pool within Reporting Period	Number of Active Contracts	Total Number of Contracts	Collection Variations	Outstanding Nominal Balance
Beginning of Period	12,425	16,499		329,744,595.36 AUD
<b>Scheduled Collections For Contracts Active This Period</b>			<b>12,701,397.92 AUD</b>	<b>12,701,397.92 AUD</b>
Collections Variations From Normal Contracts This Period			50,602.69 AUD	
Collection Variations From Contracts Paying Out Early This Period			4,988,993.67 AUD	
Collection Variations From Contracts Paying Out/Maturing This Period			699,184.39 AUD	
Collection Variations from Contracts in Advance This Period			309,452.95 AUD	
Collection Variations from Contract In Arrears This Period			(711,486.84 AUD)	
Collection Variations from Contracts Going Into Gross Salvage This Period			(1,892.75 AUD)	
Collection Variations from Contracts Going Into Net Salvage This Period			77,057.48 AUD	
Other Variations From Scheduled Collections This Period			- AUD	
<i>Instalment Collection Variations</i>			5,411,911.59 AUD	5,411,911.59 AUD
Contract Fees Collected This Period			65,397.54 AUD	
Interest Compensation Collections This Period			105,623.97 AUD	
<i>Non Instalment Collection Variations</i>			171,021.51 AUD	
<b>Actual Collections For Contracts Active This Period</b>			<b>18,284,331.02 AUD</b>	
Number of Contracts Paid Out Early This Month	295			
Number of Contracts Paid Out/Matured This Month	173			
Number of Contracts Into Net Salvage This Month	3			
Repurchased Contracts	-	-		
Less Recoveries After Net Salvage				(509.22) AUD
Reduced Nominal Balance Due to Unpaid Rental At Net Salvage				41,533.07 AUD
Reduced Nominal Balance Due to Unpaid Rental At Early Payout				416,704.49 AUD
Reduced Nominal Balance Due to Other				14,678.41 AUD
<b>End of Period</b>	<b>11,954</b>	<b>16,499</b>		<b>311,158,879.10 AUD</b>

# Arrears Contracts

Total Portfolio					Product Type					
Days in Arrears	Number of Contracts	Number of Contracts (%)	Outstanding Discounted Balance	Outstanding Discounted Balance (%)	Hire Purchase		Chattel Mortgage		Consumer Loan	
					Number of Contracts	Outstanding Discounted Balance	Number of Contracts	Outstanding Discounted Balance	Number of Contracts	Outstanding Discounted Balance
> 0 <= 30	185	1.55%	4,275,956.08 AUD	1.48%	41	895,763.95 AUD	93	1,977,517.18 AUD	51	1,402,674.95 AUD
> 30 <= 60	49	0.41%	1,182,733.54 AUD	0.41%	12	262,321.39 AUD	22	487,871.15 AUD	15	432,541.00 AUD
> 60 <= 90	14	0.12%	333,133.48 AUD	0.12%	3	61,971.14 AUD	5	78,709.13 AUD	6	192,453.21 AUD
> 90 <= 120	6	0.05%	135,435.89 AUD	0.05%	1	16,469.51 AUD	1	22,562.61 AUD	4	96,403.77 AUD
> 120 <= 150	1	0.01%	2,259.90 AUD	0.00%	-	- AUD	-	- AUD	1	2,259.90 AUD
> 150 <= 180	-	0.00%	- AUD	0.00%	-	- AUD	-	- AUD	-	- AUD
> 180 <= 210	-	0.00%	- AUD	0.00%	-	- AUD	-	- AUD	-	- AUD
> 210 <= 240	-	0.00%	- AUD	0.00%	-	- AUD	-	- AUD	-	- AUD
> 240 <= 270	-	0.00%	- AUD	0.00%	-	- AUD	-	- AUD	-	- AUD
> 270 <= 300	-	0.00%	- AUD	0.00%	-	- AUD	-	- AUD	-	- AUD
> 300 <= 330	-	0.00%	- AUD	0.00%	-	- AUD	-	- AUD	-	- AUD
> 330 <= 360	-	0.00%	- AUD	0.00%	-	- AUD	-	- AUD	-	- AUD
> 360	-	0.00%	- AUD	0.00%	-	- AUD	-	- AUD	-	- AUD
<b>Total</b>	<b>255</b>	<b>2.1332%</b>	<b>5,929,518.89 AUD</b>	<b>2.05%</b>	<b>57</b>	<b>1,236,525.99 AUD</b>	<b>121</b>	<b>2,566,660.07 AUD</b>	<b>77</b>	<b>2,126,332.83 AUD</b>

**Arrears Contracts - Total Outstanding Discounted Principal Balance**



**Arrears Contracts**

Total Portfolio					Balloon				Vehicle Status			
Days in Arrears	Number of Contracts	Number of Contracts (%)	Outstanding Discounted Balance	Outstanding Discounted Balance (%)	Balloon		No Balloon		New		Used	
					Number of Contracts	Outstanding Discounted Balance	Number of Contracts	Outstanding Discounted Balance	Number of Contracts	Outstanding Discounted Balance	Number of Contracts	Outstanding Discounted Balance
> 0 <= 30	185	1.55%	4,275,956.08 AUD	1.48%	123	2,831,960.85 AUD	62	1,443,995.23 AUD	157	3,815,782.19 AUD	28	460,173.89 AUD
> 30 <= 60	49	0.41%	1,182,733.54 AUD	0.41%	31	760,569.32 AUD	18	422,164.22 AUD	36	934,782.79 AUD	13	247,950.75 AUD
> 60 <= 90	14	0.12%	333,133.48 AUD	0.12%	7	138,602.33 AUD	7	194,531.15 AUD	10	168,586.27 AUD	4	164,547.21 AUD
> 90 <= 120	6	0.05%	135,435.89 AUD	0.05%	2	69,030.40 AUD	4	66,405.49 AUD	5	111,351.84 AUD	1	24,084.05 AUD
> 120 <= 150	1	0.01%	2,259.90 AUD	0.00%	-	- AUD	1	2,259.90 AUD	-	- AUD	1	2,259.90 AUD
> 150 <= 180	-	0.00%	- AUD	0.00%	-	- AUD	-	- AUD	-	- AUD	-	- AUD
> 180 <= 210	-	0.00%	- AUD	0.00%	-	- AUD	-	- AUD	-	- AUD	-	- AUD
> 210 <= 240	-	0.00%	- AUD	0.00%	-	- AUD	-	- AUD	-	- AUD	-	- AUD
> 240 <= 270	-	0.00%	- AUD	0.00%	-	- AUD	-	- AUD	-	- AUD	-	- AUD
> 270 <= 300	-	0.00%	- AUD	0.00%	-	- AUD	-	- AUD	-	- AUD	-	- AUD
> 300 <= 330	-	0.00%	- AUD	0.00%	-	- AUD	-	- AUD	-	- AUD	-	- AUD
> 330 <= 360	-	0.00%	- AUD	0.00%	-	- AUD	-	- AUD	-	- AUD	-	- AUD
> 360	-	0.00%	- AUD	0.00%	-	- AUD	-	- AUD	-	- AUD	-	- AUD
<b>Total</b>	<b>255</b>	<b>2.1332%</b>	<b>5,929,518.89 AUD</b>	<b>2.05%</b>	<b>163</b>	<b>3,800,162.90 AUD</b>	<b>92</b>	<b>2,129,355.99 AUD</b>	<b>208</b>	<b>5,030,503.09 AUD</b>	<b>47</b>	<b>899,015.80 AUD</b>

## Net Salvage Loss

Net Salvage Loss This Period			
Product Type	Type of Car	Number of Contracts	Net Salvage Loss
Hire Purchase	New	1	30,627.90 AUD
	Used	-	- AUD
<b>Total Hire Purchase</b>		<b>1</b>	<b>30,627.90 AUD</b>
Chattel Mortgage	New	2	10,905.17 AUD
	Used	-	- AUD
<b>Total Chattel Mortgage</b>		<b>2</b>	<b>10,905.17 AUD</b>
Consumer Loan	New	-	- AUD
	Used	-	- AUD
<b>Total Consumer Loan</b>		<b>-</b>	<b>- AUD</b>
<b>Total</b>		<b>3</b>	<b>41,533.07 AUD</b>

<b>Cumulative Net Salvage Loss as of the End of the Monthly Period</b>	429,727.14 AUD
<b>Outstanding Discounted Principal Balance at Poolcut</b>	500,000,075.89 AUD
<b>Cumulative Net Loss Ratio</b>	0.08595%

Monthly Period	Per Period		Cumulative Net Salvage Loss	
	Number of Contracts	Net Salvage Loss	Number of Contracts	Net Salvage Loss
11/2013	-	- AUD	-	- AUD
12/2013	-	- AUD	-	- AUD
01/2014	2	26,704.78 AUD	2	26,704.78 AUD
02/2014	2	24,480.82 AUD	4	51,185.60 AUD
03/2014	-	- AUD	4	51,185.60 AUD
04/2014	1	31,527.23 AUD	5	82,712.83 AUD
05/2014	-	- AUD	5	82,712.83 AUD
06/2014	4	34,592.27 AUD	9	117,305.10 AUD
07/2014	7	158,398.34 AUD	16	275,703.44 AUD
08/2014	4	47,393.53 AUD	20	323,096.97 AUD
09/2014	3	65,097.10 AUD	23	388,194.07 AUD
10/2014	3	41,533.07 AUD	26	429,727.14 AUD
11/2014	-	- AUD	-	- AUD
12/2014	-	- AUD	-	- AUD
01/2015	-	- AUD	-	- AUD
02/2015	-	- AUD	-	- AUD
03/2015	-	- AUD	-	- AUD
04/2015	-	- AUD	-	- AUD
05/2015	-	- AUD	-	- AUD
06/2015	-	- AUD	-	- AUD
07/2015	-	- AUD	-	- AUD
08/2015	-	- AUD	-	- AUD
09/2015	-	- AUD	-	- AUD
10/2015	-	- AUD	-	- AUD
11/2015	-	- AUD	-	- AUD
12/2015	-	- AUD	-	- AUD
01/2016	-	- AUD	-	- AUD
02/2016	-	- AUD	-	- AUD
03/2016	-	- AUD	-	- AUD
04/2016	-	- AUD	-	- AUD
05/2016	-	- AUD	-	- AUD
06/2016	-	- AUD	-	- AUD
07/2016	-	- AUD	-	- AUD
08/2016	-	- AUD	-	- AUD
09/2016	-	- AUD	-	- AUD
10/2016	-	- AUD	-	- AUD
11/2016	-	- AUD	-	- AUD
12/2016	-	- AUD	-	- AUD
01/2017	-	- AUD	-	- AUD
02/2017	-	- AUD	-	- AUD
<b>Total</b>	<b>26</b>	<b>429,727.14 AUD</b>		

## Net Salvage After Recoveries

Net Salvaged Contracts							
Product Type	Vehicle Status	Number of Contracts	Outstanding Discounted Balance at Net Salvage	Arrears Interest At Net Salvage	Net Salvage Loss	Recoveries After Net Salvage	Net Salvage Loss After Recoveries
Hire Purchase	New	2	84,196.59 AUD	- AUD	84,196.59 AUD	- AUD	84,196.59 AUD
	Used	3	39,157.80 AUD	- AUD	39,157.80 AUD	- AUD	39,157.80 AUD
<b>Total Hire Purchase</b>		<b>5</b>	<b>123,354.39 AUD</b>	<b>- AUD</b>	<b>123,354.39 AUD</b>	<b>- AUD</b>	<b>123,354.39 AUD</b>
Chattel Mortgage	New	12	220,410.85 AUD	1,349.27 AUD	221,760.12 AUD	20,460.49 AUD	201,299.63 AUD
	Used	2	8,282.13 AUD	- AUD	8,282.13 AUD	587.06 AUD	7,695.07 AUD
<b>Total Chattel Mortgage</b>		<b>14</b>	<b>228,692.98 AUD</b>	<b>1,349.27 AUD</b>	<b>230,042.25 AUD</b>	<b>21,047.55 AUD</b>	<b>208,994.70 AUD</b>
Consumer Loan	New	3	27,690.41 AUD	- AUD	27,690.41 AUD	- AUD	27,690.41 AUD
	Used	4	48,640.09 AUD	- AUD	48,640.09 AUD	467.88 AUD	48,172.21 AUD
<b>Total Consumer Loan</b>		<b>7</b>	<b>76,330.50 AUD</b>	<b>- AUD</b>	<b>76,330.50 AUD</b>	<b>467.88 AUD</b>	<b>75,862.62 AUD</b>
<b>Total</b>		<b>26</b>	<b>428,377.87 AUD</b>	<b>1,349.27 AUD</b>	<b>429,727.14 AUD</b>	<b>21,515.43 AUD</b>	<b>408,211.71 AUD</b>

**Pool Data I**

**Down Payments**

Total Portfolio						Product Type					
						Hire Purchase		Chattel Mortgage		Consumer Loan	
Down Payment	Number of Contracts	Percentage of Contracts	Outstanding Discounted Balance	Percentage of Balance	Down Payment/ Purchase Price in %	Number of Contracts	Outstanding Discounted Balance	Number of Contracts	Outstanding Discounted Balance	Number of Contracts	Outstanding Discounted Balance
No Down Payment	3,497	29.25%	96,850,737.34 AUD	33.53%	0.00%	593	16,017,896.06 AUD	1,148	29,822,690.85 AUD	1,756	51,010,150.43 AUD
0.01 - 10,000.00	5,972	49.96%	135,964,952.54 AUD	47.07%	0.00%	711	16,740,900.79 AUD	1,504	33,353,818.26 AUD	3,757	85,870,233.49 AUD
10,000.01 - 20,000.00	1,667	13.95%	35,874,405.30 AUD	12.42%	0.00%	240	5,683,916.70 AUD	431	10,078,470.16 AUD	996	20,112,018.44 AUD
20,000.01 - 30,000.00	505	4.22%	11,689,609.04 AUD	4.05%	0.00%	70	1,608,414.72 AUD	131	3,188,934.66 AUD	304	6,892,259.66 AUD
30,000.01 - 40,000.00	190	1.59%	4,392,438.91 AUD	1.52%	0.00%	35	821,454.23 AUD	52	1,466,096.86 AUD	103	2,104,887.82 AUD
40,000.01 - 50,000.00	62	0.52%	1,621,771.85 AUD	0.56%	0.00%	16	409,570.30 AUD	20	500,220.23 AUD	26	711,981.32 AUD
50,000.01 - 60,000.00	33	0.28%	946,684.40 AUD	0.33%	0.00%	3	74,143.49 AUD	11	429,542.80 AUD	19	442,998.11 AUD
60,000.01 - 70,000.00	10	0.08%	187,404.43 AUD	0.06%	0.00%	3	89,259.77 AUD	1	4,871.61 AUD	6	93,273.05 AUD
70,000.01 - 80,000.00	10	0.08%	470,297.44 AUD	0.16%	0.00%	2	233,488.44 AUD	5	206,608.51 AUD	3	30,200.49 AUD
80,000.01 - 90,000.00	2	0.02%	107,408.36 AUD	0.04%	0.00%	-	- AUD	-	- AUD	2	107,408.36 AUD
90,000.01 - 100,000.00	2	0.02%	84,586.33 AUD	0.03%	0.00%	1	1.00 AUD	-	- AUD	1	84,585.33 AUD
100,000.01 - 110,000.00	2	0.02%	286,342.31 AUD	0.10%	0.00%	1	67,398.68 AUD	1	218,943.63 AUD	-	- AUD
110,000.01 - 120,000.00	2	0.02%	376,593.44 AUD	0.13%	0.00%	-	- AUD	-	- AUD	2	376,593.44 AUD
120,000.01 - 130,000.00	-	0.00%	- AUD	0.00%	0.00%	-	- AUD	-	- AUD	-	- AUD
130,000.01 - 140,000.00	-	0.00%	- AUD	0.00%	0.00%	-	- AUD	-	- AUD	-	- AUD
140,000.01 - 150,000.00	-	0.00%	- AUD	0.00%	0.00%	-	- AUD	-	- AUD	-	- AUD
> 150,000.00	-	0.00%	- AUD	0.00%	0.00%	-	- AUD	-	- AUD	-	- AUD
<b>Total</b>	<b>11,954</b>	<b>100.00%</b>	<b>288,853,231.69 AUD</b>	<b>100.00%</b>	<b>24.59%</b>	<b>1,675</b>	<b>41,746,444.18 AUD</b>	<b>3,304</b>	<b>79,270,197.57 AUD</b>	<b>6,975</b>	<b>167,836,589.94 AUD</b>

Statistics Down Payments	
Minimum Down Payment	- AUD
Maximum Down Payment	115,000.00 AUD
Weighted Average Down Payment (Customers that made a Down Payment)	9,092.97 AUD
Weighted Average Down Payment	6,044.15 AUD

**Type of Payment**

Total Portfolio				
Type of Payment	Number of Contracts	Percentage of Contracts	Outstanding Discounted Balance	Percentage of Balance
Direct Debit	11,812	98.81%	285,809,854.56 AUD	98.95%
Other	142	1.19%	3,043,377.13 AUD	1.05%
<b>Total</b>	<b>11,954</b>	<b>100.00%</b>	<b>288,853,231.69 AUD</b>	<b>100.00%</b>

Product Type					
Hire Purchase		Chattel Mortgage		Consumer Loan	
Number of Contracts	Outstanding Discounted Balance	Number of Contracts	Outstanding Discounted Balance	Number of Contracts	Outstanding Discounted Balance
1,643	41,070,288	3,234	77,757,626	6,935	166,981,940
32	676,156	70	1,512,571	40	854,650
<b>1,675</b>	<b>41,746,444.18 AUD</b>	<b>3,304</b>	<b>79,270,197.57 AUD</b>	<b>6,975</b>	<b>167,836,589.94 AUD</b>

Pool Data I

Down Payments

Total Portfolio						Balloon				Vehicle Status			
Down Payment	Number of Contracts	Percentage of Contracts	Outstanding Discounted Balance	Percentage of Balance	Down Payment/ Purchase Price in %	Balloon		No Balloon		New		Used	
						Number of Contracts	Outstanding Discounted Balance	Number of Contracts	Outstanding Discounted Balance	Number of Contracts	Outstanding Discounted Balance	Number of Contracts	Outstanding Discounted Balance
No Down Payment	3,497	29.25%	96,850,737.34 AUD	33.53%	0.00%	2,046	66,103,193.40 AUD	1,451	30,747,543.94 AUD	2,949	85,057,025.58 AUD	548	11,793,711.76 AUD
0.01 - 10,000.00	5,972	49.96%	135,964,952.54 AUD	47.07%	0.00%	2,586	73,048,143.04 AUD	3,386	62,916,809.50 AUD	5,043	119,317,904.61 AUD	929	16,647,047.93 AUD
10,000.01 - 20,000.00	1,667	13.95%	35,874,405.30 AUD	12.42%	0.00%	686	21,088,031.95 AUD	981	14,786,373.35 AUD	1,455	32,029,374.87 AUD	212	3,845,030.43 AUD
20,000.01 - 30,000.00	505	4.22%	11,689,609.04 AUD	4.05%	0.00%	186	6,553,728.30 AUD	319	5,135,880.74 AUD	459	10,689,265.71 AUD	46	1,000,343.33 AUD
30,000.01 - 40,000.00	190	1.59%	4,392,438.91 AUD	1.52%	0.00%	81	2,793,523.30 AUD	109	1,598,915.61 AUD	178	4,223,096.52 AUD	12	169,342.39 AUD
40,000.01 - 50,000.00	62	0.52%	1,621,771.85 AUD	0.56%	0.00%	25	1,080,924.10 AUD	37	540,847.75 AUD	57	1,569,295.94 AUD	5	52,475.91 AUD
50,000.01 - 60,000.00	33	0.28%	946,684.40 AUD	0.33%	0.00%	12	561,883.95 AUD	21	384,800.45 AUD	31	917,897.35 AUD	2	28,787.05 AUD
60,000.01 - 70,000.00	10	0.08%	187,404.43 AUD	0.06%	0.00%	2	82,415.93 AUD	8	104,988.50 AUD	10	187,404.43 AUD	-	- AUD
70,000.01 - 80,000.00	10	0.08%	470,297.44 AUD	0.16%	0.00%	6	423,349.77 AUD	4	46,947.67 AUD	10	470,297.44 AUD	-	- AUD
80,000.01 - 90,000.00	2	0.02%	107,408.36 AUD	0.04%	0.00%	1	69,789.89 AUD	1	37,618.47 AUD	2	107,408.36 AUD	-	- AUD
90,000.01 - 100,000.00	2	0.02%	84,586.33 AUD	0.03%	0.00%	1	84,586.33 AUD	1	1.00 AUD	2	84,586.33 AUD	-	- AUD
100,000.01 - 110,000.00	2	0.02%	286,342.31 AUD	0.10%	0.00%	2	286,342.31 AUD	-	- AUD	2	286,342.31 AUD	-	- AUD
110,000.01 - 120,000.00	2	0.02%	376,593.44 AUD	0.13%	0.00%	1	311,030.84 AUD	1	65,562.60 AUD	1	65,562.60 AUD	1	311,030.84 AUD
120,000.01 - 130,000.00	-	0.00%	- AUD	0.00%	0.00%	-	- AUD	-	- AUD	-	- AUD	-	- AUD
130,000.01 - 140,000.00	-	0.00%	- AUD	0.00%	0.00%	-	- AUD	-	- AUD	-	- AUD	-	- AUD
140,000.01 - 150,000.00	-	0.00%	- AUD	0.00%	0.00%	-	- AUD	-	- AUD	-	- AUD	-	- AUD
> 150,000.00	-	0.00%	- AUD	0.00%	0.00%	-	- AUD	-	- AUD	-	- AUD	-	- AUD
<b>Total</b>	<b>11,954</b>	<b>100.00%</b>	<b>288,853,231.69 AUD</b>	<b>100.00%</b>	<b>24.59%</b>	<b>5,635</b>	<b>172,486,942.11 AUD</b>	<b>6,319</b>	<b>116,366,289.58 AUD</b>	<b>10,199</b>	<b>255,005,462.05 AUD</b>	<b>1,755</b>	<b>33,847,769.64 AUD</b>

Statistics Down Payments	
Minimum Down Payment	- AUD
Maximum Down Payment	115,000.00 AUD
Weighted Average Down Payment (Customers that made a Down Payment)	9,092.97 AUD
Weighted Average Down Payment	6,044.15 AUD

Type of Payment

Total Portfolio				
Type of Payment	Number of Contracts	Percentage of Contracts	Outstanding Discounted Balance	Percentage of Balance
Direct Debit	11,812	98.81%	285,809,854.56 AUD	98.95%
Other	142	1.19%	3,043,377.13 AUD	1.05%
<b>Total</b>	<b>11,954</b>	<b>100.00%</b>	<b>288,853,231.69 AUD</b>	<b>100.00%</b>

Balloon				Vehicle Status			
Balloon		No Balloon		New		Used	
Number of Contracts	Outstanding Discounted Balance	Number of Contracts	Outstanding Discounted Balance	Number of Contracts	Outstanding Discounted Balance	Number of Contracts	Outstanding Discounted Balance
5,554	170,328,028	6,258	115,481,826	10,085	252,330,047	1,727	33,479,808
81	2,158,914	61	884,463	114	2,675,415	28	367,962
<b>5,635</b>	<b>172,486,942.11 AUD</b>	<b>6,319</b>	<b>116,366,289.58 AUD</b>	<b>10,199</b>	<b>255,005,462.05 AUD</b>	<b>1,755</b>	<b>33,847,769.64 AUD</b>

## Pool Data II

### Distribution of Contracts and Vehicles per Borrower

Number of Contracts Per Borrower	Number of Customers	Percentage of Customers	Number of Contracts	Percentage of Contracts	Outstanding Discounted Principal Balance	Percentage of Balance
1	12,955	98.70%	11,699	97.74%	311,992,511.41 AUD	97.76%
2	153	1.17%	235	1.96%	6,351,526.29 AUD	1.99%
3	11	0.08%	18	0.15%	476,941.65 AUD	0.15%
4	5	0.04%	12	0.10%	244,892.81 AUD	0.08%
5	1	0.01%	5	0.04%	80,129.17 AUD	0.03%
<b>Total</b>	<b>13,125</b>	<b>100.00%</b>	<b>11,969</b>	<b>100.00%</b>	<b>319,146,001.33 AUD</b>	<b>100.00%</b>

### Top 20 Borrower

Ranking	Outstanding Discounted Principal Balance	Percentage of Overall Balance	Number of Contracts
1	311,030.84 AUD	0.10768 %	1
2	305,871.60 AUD	0.10589 %	2
3	253,602.11 AUD	0.08780 %	1
4	226,754.14 AUD	0.07850 %	1
5	219,173.62 AUD	0.07588 %	3
6	186,506.06 AUD	0.06457 %	2
7	176,049.09 AUD	0.06095 %	1
8	170,804.54 AUD	0.05913 %	1
9	169,153.10 AUD	0.05856 %	1
10	166,793.04 AUD	0.05774 %	4
11	153,171.11 AUD	0.05303 %	1
12	129,603.63 AUD	0.04487 %	2
13	128,237.20 AUD	0.04440 %	1
14	127,278.68 AUD	0.04406 %	1
15	122,317.02 AUD	0.04235 %	2
16	118,222.50 AUD	0.04093 %	2
17	117,539.92 AUD	0.04069 %	1
18	112,962.38 AUD	0.03911 %	1
19	110,685.40 AUD	0.03832 %	1
20	110,655.62 AUD	0.03831 %	1
	<b>3,416,411.60 AUD</b>	<b>1.18275 %</b>	<b>30</b>

### Pool Data III

#### Distribution by Outstanding Discounted Balance

Total Portfolio					Product Type					
Distribution by Outstanding Discounted Balance	Number of Contracts	Percentage of Contracts	Outstanding Discounted Balance	Percentage of Balance	Hire Purchase		Chattel Mortgage		Consumer Loan	
					Number of Contracts	Outstanding Discounted Balance	Number of Contracts	Outstanding Discounted Balance	Number of Contracts	Outstanding Discounted Balance
0.00 - 10,000.00	1,912	15.99%	10,527,661.91 AUD	3.64%	316	1,626,653.07 AUD	535	2,716,675.31 AUD	1,061	6,184,333.53 AUD
10,000.01 - 20,000.00	3,575	29.91%	54,584,234.33 AUD	18.90%	462	6,963,932.86 AUD	992	15,200,710.04 AUD	2,121	32,419,591.43 AUD
20,000.01 - 30,000.00	3,090	25.85%	75,844,663.12 AUD	26.26%	387	9,508,787.36 AUD	847	20,984,219.97 AUD	1,856	45,351,655.79 AUD
30,000.01 - 40,000.00	1,726	14.44%	59,336,488.84 AUD	20.54%	228	7,877,052.51 AUD	490	16,793,771.69 AUD	1,008	34,665,664.64 AUD
40,000.01 - 50,000.00	927	7.75%	41,172,887.98 AUD	14.25%	137	6,130,149.55 AUD	242	10,759,136.14 AUD	548	24,283,602.29 AUD
50,000.01 - 60,000.00	355	2.97%	19,329,428.63 AUD	6.69%	61	3,331,876.31 AUD	104	5,654,336.11 AUD	190	10,343,216.21 AUD
60,000.01 - 70,000.00	201	1.68%	12,900,816.06 AUD	4.47%	41	2,627,527.83 AUD	52	3,365,828.56 AUD	108	6,907,459.67 AUD
70,000.01 - 80,000.00	75	0.63%	5,580,755.15 AUD	1.93%	20	1,482,800.85 AUD	19	1,412,528.96 AUD	36	2,685,425.34 AUD
80,000.01 - 90,000.00	43	0.36%	3,632,674.66 AUD	1.26%	12	1,000,048.81 AUD	12	1,021,722.12 AUD	19	1,610,903.73 AUD
90,000.01 - 100,000.00	24	0.20%	2,258,434.39 AUD	0.78%	5	473,166.16 AUD	3	286,252.46 AUD	16	1,499,015.77 AUD
100,000.01 - 110,000.00	8	0.07%	853,251.06 AUD	0.30%	1	108,194.14 AUD	3	323,943.36 AUD	4	421,113.56 AUD
110,000.01 - 120,000.00	8	0.07%	896,911.12 AUD	0.31%	4	445,450.19 AUD	2	227,842.93 AUD	2	223,618.00 AUD
120,000.01 - 130,000.00	2	0.02%	255,515.88 AUD	0.09%	-	- AUD	1	128,237.20 AUD	1	127,278.68 AUD
130,000.01 - 140,000.00	-	0.00%	- AUD	0.00%	-	- AUD	-	- AUD	-	- AUD
140,000.01 - 150,000.00	-	0.00%	- AUD	0.00%	-	- AUD	-	- AUD	-	- AUD
> 150,000.00	8	0.07%	1,679,508.56 AUD	0.58%	1	170,804.54 AUD	2	394,992.72 AUD	5	1,113,711.30 AUD
<b>Total</b>	<b>11,954</b>	<b>100.00%</b>	<b>288,853,231.69 AUD</b>	<b>100.00%</b>	<b>1,675</b>	<b>41,746,444.18 AUD</b>	<b>3,304</b>	<b>79,270,197.57 AUD</b>	<b>6,975</b>	<b>167,836,589.94 AUD</b>

Statistics Outstanding Discounted Balance	
Minimum Outstanding Discounted Balance	- AUD
Maximum Outstanding Discounted Balance	311,030.84 AUD
Average Outstanding Discounted Balance	24,163.73 AUD

#### Distribution by Original Balance

Total Portfolio					Product Type					
Distribution by Original Balance	Number of Contracts	Percentage of Contracts	Outstanding Discounted Balance	Percentage of Balance	Hire Purchase		Chattel Mortgage		Consumer Loan	
					Number of Contracts	Outstanding Discounted Balance	Number of Contracts	Outstanding Discounted Balance	Number of Contracts	Outstanding Discounted Balance
0.00 - 10,000.00	36	0.30%	126,534.12 AUD	0.04%	1	5,243.73 AUD	2	9,487.96 AUD	33	111,802.43 AUD
10,000.01 - 20,000.00	1,033	8.64%	8,805,833.93 AUD	3.05%	56	298,316.33 AUD	121	1,017,534.04 AUD	856	7,489,983.56 AUD
20,000.01 - 30,000.00	2,361	19.75%	33,764,650.26 AUD	11.69%	204	2,031,007.14 AUD	505	6,283,010.37 AUD	1,652	25,450,632.75 AUD
30,000.01 - 40,000.00	2,870	24.01%	55,887,431.73 AUD	19.35%	330	4,673,119.27 AUD	786	13,576,914.01 AUD	1,754	37,637,398.45 AUD
40,000.01 - 50,000.00	2,208	18.47%	54,463,905.69 AUD	18.86%	304	6,114,256.08 AUD	705	15,719,347.96 AUD	1,199	32,630,301.65 AUD
50,000.01 - 60,000.00	1,400	11.71%	42,990,074.17 AUD	14.88%	232	5,766,113.32 AUD	480	13,172,605.18 AUD	688	24,051,355.67 AUD
60,000.01 - 70,000.00	827	6.92%	30,028,781.48 AUD	10.40%	186	5,666,655.04 AUD	270	8,972,612.19 AUD	371	15,389,514.25 AUD
70,000.01 - 80,000.00	474	3.97%	20,584,708.60 AUD	7.13%	117	4,245,033.86 AUD	150	5,802,486.70 AUD	207	10,537,188.04 AUD
80,000.01 - 90,000.00	275	2.30%	13,119,886.05 AUD	4.54%	78	3,412,747.70 AUD	105	4,528,123.69 AUD	92	5,179,014.66 AUD
90,000.01 - 100,000.00	178	1.49%	9,280,010.13 AUD	3.21%	66	3,090,407.61 AUD	58	2,713,293.75 AUD	54	3,476,308.77 AUD
100,000.01 - 110,000.00	131	1.10%	7,463,465.92 AUD	2.58%	37	2,047,716.64 AUD	59	3,087,427.94 AUD	35	2,328,321.34 AUD
110,000.01 - 120,000.00	68	0.57%	4,050,985.07 AUD	1.40%	21	997,287.78 AUD	32	1,886,794.47 AUD	15	1,166,902.82 AUD
120,000.01 - 130,000.00	24	0.20%	1,577,561.14 AUD	0.55%	7	429,249.43 AUD	11	658,927.19 AUD	6	489,384.52 AUD
130,000.01 - 140,000.00	23	0.19%	1,785,012.73 AUD	0.62%	8	582,590.67 AUD	9	619,840.34 AUD	6	582,581.72 AUD
140,000.01 - 150,000.00	24	0.20%	1,897,020.65 AUD	0.66%	17	1,244,435.16 AUD	6	541,929.87 AUD	1	110,655.62 AUD
> 150,000.00	22	0.18%	3,027,370.02 AUD	1.05%	11	1,142,264.42 AUD	5	679,861.91 AUD	6	1,205,243.69 AUD
<b>Total</b>	<b>11,954</b>	<b>100.00%</b>	<b>288,853,231.69 AUD</b>	<b>100.00%</b>	<b>1,675</b>	<b>41,746,444.18 AUD</b>	<b>3,304</b>	<b>79,270,197.57 AUD</b>	<b>6,975</b>	<b>167,836,589.94 AUD</b>

Statistics	
Minimum Original Balance	5,398.00 AUD
Maximum Original Balance	356,398.00 AUD
Weighted Average Original Principal Balance (by ODPB)	54,920.27 AUD

## Pool Data III

### Distribution by Outstanding Discounted Balance

Total Portfolio					Balloon				Vehicle Status			
Distribution by Outstanding Discounted Balance	Number of Contracts	Percentage of Contracts	Outstanding Discounted Balance	Percentage of Balance	Balloon		No Balloon		New		Used	
					Number of Contracts	Outstanding Discounted Balance	Number of Contracts	Outstanding Discounted Balance	Number of Contracts	Outstanding Discounted Balance	Number of Contracts	Outstanding Discounted Balance
0.00 - 10,000.00	1,912	15.99%	10,527,661.91 AUD	3.64%	237	1,433,660.20 AUD	1,675	9,094,001.71 AUD	1,427	7,871,099.90 AUD	485	2,656,562.01 AUD
10,000.01 - 20,000.00	3,575	29.91%	54,584,234.33 AUD	18.90%	1,257	19,903,843.70 AUD	2,318	34,680,390.63 AUD	2,974	45,649,886.45 AUD	601	8,934,347.88 AUD
20,000.01 - 30,000.00	3,090	25.85%	75,844,663.12 AUD	26.26%	1,733	42,842,789.54 AUD	1,357	33,001,873.58 AUD	2,723	66,810,694.82 AUD	367	9,033,968.30 AUD
30,000.01 - 40,000.00	1,726	14.44%	59,336,488.84 AUD	20.54%	1,152	39,705,051.39 AUD	574	19,631,437.45 AUD	1,560	53,665,989.80 AUD	166	5,670,499.04 AUD
40,000.01 - 50,000.00	927	7.75%	41,172,887.98 AUD	14.25%	676	30,096,007.89 AUD	251	11,076,880.09 AUD	844	37,499,942.48 AUD	83	3,672,945.50 AUD
50,000.01 - 60,000.00	355	2.97%	19,329,428.63 AUD	6.69%	277	15,111,749.94 AUD	78	4,217,678.69 AUD	336	18,306,455.87 AUD	19	1,022,972.76 AUD
60,000.01 - 70,000.00	201	1.68%	12,900,816.06 AUD	4.47%	162	10,422,523.30 AUD	39	2,478,292.76 AUD	182	11,684,953.39 AUD	19	1,215,862.67 AUD
70,000.01 - 80,000.00	75	0.63%	5,580,755.15 AUD	1.93%	61	4,547,396.84 AUD	14	1,033,358.31 AUD	72	5,358,432.43 AUD	3	222,322.72 AUD
80,000.01 - 90,000.00	43	0.36%	3,632,674.66 AUD	1.26%	35	2,957,088.64 AUD	8	675,586.02 AUD	38	3,220,757.73 AUD	5	411,916.93 AUD
90,000.01 - 100,000.00	24	0.20%	2,258,434.39 AUD	0.78%	20	1,887,513.56 AUD	4	370,920.83 AUD	21	1,979,383.55 AUD	3	279,050.84 AUD
100,000.01 - 110,000.00	8	0.07%	853,251.06 AUD	0.30%	7	747,381.55 AUD	1	105,869.51 AUD	8	853,251.06 AUD	-	- AUD
110,000.01 - 120,000.00	8	0.07%	896,911.12 AUD	0.31%	8	896,911.12 AUD	-	- AUD	7	783,948.74 AUD	1	112,962.38 AUD
120,000.01 - 130,000.00	2	0.02%	255,515.88 AUD	0.09%	2	255,515.88 AUD	-	- AUD	1	128,237.20 AUD	1	127,278.68 AUD
130,000.01 - 140,000.00	-	0.00%	- AUD	0.00%	-	- AUD	-	- AUD	-	- AUD	-	- AUD
140,000.01 - 150,000.00	-	0.00%	- AUD	0.00%	-	- AUD	-	- AUD	-	- AUD	-	- AUD
> 150,000.00	8	0.07%	1,679,508.56 AUD	0.58%	8	1,679,508.56 AUD	-	- AUD	6	1,192,428.63 AUD	2	487,079.93 AUD
<b>Total</b>	<b>11,954</b>	<b>100.00%</b>	<b>288,853,231.69 AUD</b>	<b>100.00%</b>	<b>5,635</b>	<b>172,486,942.11 AUD</b>	<b>6,319</b>	<b>116,366,289.58 AUD</b>	<b>10,199</b>	<b>255,005,462.05 AUD</b>	<b>1,755</b>	<b>33,847,769.64 AUD</b>

Statistics Outstanding Discounted Balance	
Minimum Outstanding Discounted Balance	- AUD
Maximum Outstanding Discounted Balance	311,030.84 AUD
Average Outstanding Discounted Balance	24,163.73 AUD

### Distribution by Original Balance

Total Portfolio					Balloon				Vehicle Status			
Distribution by Original Balance	Number of Contracts	Percentage of Contracts	Outstanding Discounted Balance	Percentage of Balance	Balloon		No Balloon		New		Used	
					Number of Contracts	Outstanding Discounted Balance	Number of Contracts	Outstanding Discounted Balance	Number of Contracts	Outstanding Discounted Balance	Number of Contracts	Outstanding Discounted Balance
0.00 - 10,000.00	36	0.30%	126,534.12 AUD	0.04%	-	- AUD	36	126,534.12 AUD	14	59,007.50 AUD	22	67,526.62 AUD
10,000.01 - 20,000.00	1,033	8.64%	8,805,833.93 AUD	3.05%	80	852,345.60 AUD	953	7,953,488.33 AUD	643	5,555,794.77 AUD	390	3,250,039.16 AUD
20,000.01 - 30,000.00	2,361	19.75%	33,764,650.26 AUD	11.69%	600	9,475,208.79 AUD	1,761	24,289,441.47 AUD	1,877	26,802,357.95 AUD	484	6,962,292.31 AUD
30,000.01 - 40,000.00	2,870	24.01%	55,887,431.73 AUD	19.35%	1,267	26,169,874.41 AUD	1,603	29,717,557.32 AUD	2,475	48,134,223.07 AUD	395	7,753,208.66 AUD
40,000.01 - 50,000.00	2,208	18.47%	54,463,905.69 AUD	18.86%	1,242	32,639,567.81 AUD	966	21,824,337.88 AUD	2,006	49,361,751.95 AUD	202	5,102,153.74 AUD
50,000.01 - 60,000.00	1,400	11.71%	42,990,074.17 AUD	14.88%	873	28,256,052.97 AUD	527	14,734,021.20 AUD	1,294	39,745,098.12 AUD	106	3,244,976.05 AUD
60,000.01 - 70,000.00	827	6.92%	30,028,781.48 AUD	10.40%	572	21,546,296.44 AUD	255	8,482,485.04 AUD	766	27,731,661.48 AUD	61	2,297,120.00 AUD
70,000.01 - 80,000.00	474	3.97%	20,584,708.60 AUD	7.13%	370	16,233,058.35 AUD	104	4,351,650.25 AUD	425	18,447,157.45 AUD	49	2,137,551.15 AUD
80,000.01 - 90,000.00	275	2.30%	13,119,886.05 AUD	4.54%	237	11,593,385.42 AUD	38	1,526,500.63 AUD	252	12,015,833.80 AUD	23	1,104,052.25 AUD
90,000.01 - 100,000.00	178	1.49%	9,280,010.13 AUD	3.21%	147	7,934,636.40 AUD	31	1,345,373.73 AUD	173	8,946,415.62 AUD	5	333,594.51 AUD
100,000.01 - 110,000.00	131	1.10%	7,463,465.92 AUD	2.58%	108	6,458,082.12 AUD	23	1,005,383.80 AUD	126	7,236,092.95 AUD	5	227,372.97 AUD
110,000.01 - 120,000.00	68	0.57%	4,050,985.07 AUD	1.40%	56	3,612,988.36 AUD	12	437,996.71 AUD	64	3,835,256.90 AUD	4	215,728.17 AUD
120,000.01 - 130,000.00	24	0.20%	1,577,561.14 AUD	0.55%	17	1,203,162.48 AUD	7	374,398.66 AUD	23	1,484,437.95 AUD	1	93,123.19 AUD
130,000.01 - 140,000.00	23	0.19%	1,785,012.73 AUD	0.62%	20	1,587,892.29 AUD	3	197,120.44 AUD	19	1,388,878.22 AUD	4	396,134.51 AUD
140,000.01 - 150,000.00	24	0.20%	1,897,020.65 AUD	0.66%	24	1,897,020.65 AUD	-	- AUD	24	1,897,020.65 AUD	-	- AUD
> 150,000.00	22	0.18%	3,027,370.02 AUD	1.05%	22	3,027,370.02 AUD	-	- AUD	18	2,364,473.67 AUD	4	662,896.35 AUD
<b>Total</b>	<b>11,954</b>	<b>100.00%</b>	<b>288,853,231.69 AUD</b>	<b>100.00%</b>	<b>5,635</b>	<b>172,486,942.11 AUD</b>	<b>6,319</b>	<b>116,366,289.58 AUD</b>	<b>10,199</b>	<b>255,005,462.05 AUD</b>	<b>1,755</b>	<b>33,847,769.64 AUD</b>

Statistics	
Minimum Original Balance	5,398.00 AUD
Maximum Original Balance	356,398.00 AUD
Weighted Average Original Principal Balance (by ODPB)	54,920.27 AUD

# Pool Data IV

## Interest Rate paid by the Receivable Debtor

Total Portfolio					Product Type					
Interest Rate paid by the Receivable Debtor	Number of Contracts	Percentage of Contracts	Outstanding Discounted Balance	Percentage of Balance	Hire Purchase		Chattel Mortgage		Consumer Loan	
					Number of Contracts	Outstanding Discounted Balance	Number of Contracts	Outstanding Discounted Balance	Number of Contracts	Outstanding Discounted Balance
0.00%	415	3.47%	13,034,772.52 AUD	4.51%	-	- AUD	160	5,087,196.25 AUD	255	7,947,576.27 AUD
0.01% - 1.00%	217	1.82%	7,800,858.37 AUD	2.70%	-	- AUD	13	592,634.77 AUD	204	7,208,223.60 AUD
1.01% - 2.00%	466	3.90%	10,649,296.22 AUD	3.69%	-	- AUD	32	766,782.62 AUD	434	9,882,513.60 AUD
2.01% - 3.00%	802	6.71%	15,085,615.72 AUD	5.22%	22	350,266.77 AUD	108	2,150,055.97 AUD	672	12,585,292.98 AUD
3.01% - 4.00%	94	0.79%	1,777,468.46 AUD	0.62%	13	253,693.39 AUD	15	271,874.51 AUD	66	1,251,900.56 AUD
4.01% - 5.00%	269	2.25%	7,825,254.04 AUD	2.71%	55	1,789,032.51 AUD	53	1,772,552.59 AUD	161	4,263,668.94 AUD
5.01% - 6.00%	451	3.77%	12,549,962.24 AUD	4.34%	70	1,583,318.68 AUD	193	4,890,187.36 AUD	188	6,076,456.20 AUD
6.01% - 7.00%	1,055	8.83%	33,856,307.84 AUD	11.72%	42	1,364,853.97 AUD	238	7,094,227.44 AUD	775	25,397,226.43 AUD
7.01% - 8.00%	1,622	13.57%	45,621,710.88 AUD	15.79%	143	4,800,377.92 AUD	380	11,472,314.12 AUD	1,099	29,349,018.84 AUD
8.01% - 9.00%	2,495	20.87%	59,593,518.38 AUD	20.63%	464	12,269,363.42 AUD	845	20,859,654.31 AUD	1,186	26,464,500.65 AUD
9.01% - 10.00%	2,075	17.36%	42,140,189.15 AUD	14.59%	462	10,506,232.24 AUD	670	12,877,823.50 AUD	943	18,756,133.41 AUD
10.01% - 11.00%	1,030	8.62%	20,406,786.63 AUD	7.06%	203	4,823,899.39 AUD	306	6,026,551.41 AUD	521	9,556,335.83 AUD
11.01% - 12.00%	475	3.97%	9,501,164.25 AUD	3.29%	98	2,214,161.45 AUD	145	2,668,641.44 AUD	232	4,618,361.36 AUD
12.01% - 13.00%	255	2.13%	4,880,244.24 AUD	1.69%	42	799,807.28 AUD	83	1,631,917.94 AUD	130	2,448,519.02 AUD
13.01% - 14.00%	98	0.82%	1,736,554.02 AUD	0.60%	29	437,794.47 AUD	27	491,022.52 AUD	42	807,737.03 AUD
14.01% - 15.00%	80	0.67%	1,506,126.64 AUD	0.52%	9	171,651.98 AUD	23	412,779.59 AUD	48	921,695.07 AUD
15.01% - 16.00%	51	0.43%	859,747.84 AUD	0.30%	21	356,354.38 AUD	11	201,963.31 AUD	19	301,430.15 AUD
> 16.00%	4	0.03%	27,654.25 AUD	0.01%	2	25,636.33 AUD	2	2,017.92 AUD	-	- AUD
<b>Total</b>	<b>11,954</b>	<b>100.00%</b>	<b>288,853,231.69 AUD</b>	<b>100.00%</b>	<b>1,675</b>	<b>41,746,444.18 AUD</b>	<b>3,304</b>	<b>79,270,197.57 AUD</b>	<b>6,975</b>	<b>167,836,589.94 AUD</b>

Statistics Interest Rate		
Minimum Interest Rate Debtor		0.00%
Maximum Interest Rate Debtor		16.95%
Weighted Average Interest Rate Debtor		7.40%

# Pool Data IV

## Interest Rate paid by the Receivable Debtor

Total Portfolio					Balloon				Vehicle Status			
Interest Rate paid by the Receivable Debtor	Number of Contracts	Percentage of Contracts	Outstanding Discounted Balance	Percentage of Balance	Balloon		No Balloon		New		Used	
					Number of Contracts	Outstanding Discounted Balance	Number of Contracts	Outstanding Discounted Balance	Number of Contracts	Outstanding Discounted Balance	Number of Contracts	Outstanding Discounted Balance
0.00%	415	3.47%	13,034,772.52 AUD	4.51%	244	8,225,000.52 AUD	171	4,809,772.00 AUD	405	12,807,886.10 AUD	10	226,886.42 AUD
0.01% - 1.00%	217	1.82%	7,800,858.37 AUD	2.70%	135	5,336,789.98 AUD	82	2,464,068.39 AUD	207	7,603,611.61 AUD	10	197,246.76 AUD
1.01% - 2.00%	466	3.90%	10,649,296.22 AUD	3.69%	231	5,960,082.79 AUD	235	4,689,213.43 AUD	462	10,569,342.08 AUD	4	79,954.14 AUD
2.01% - 3.00%	802	6.71%	15,085,615.72 AUD	5.22%	364	8,496,007.00 AUD	438	6,589,608.72 AUD	787	14,826,004.94 AUD	15	259,610.78 AUD
3.01% - 4.00%	94	0.79%	1,777,468.46 AUD	0.62%	58	1,241,730.39 AUD	36	535,738.07 AUD	92	1,745,685.30 AUD	2	31,783.16 AUD
4.01% - 5.00%	269	2.25%	7,825,254.04 AUD	2.71%	173	6,334,830.88 AUD	96	1,490,423.16 AUD	238	7,303,892.58 AUD	31	521,361.46 AUD
5.01% - 6.00%	451	3.77%	12,549,962.24 AUD	4.34%	266	8,790,937.49 AUD	185	3,759,024.75 AUD	429	11,775,997.84 AUD	22	773,964.40 AUD
6.01% - 7.00%	1,055	8.83%	33,856,307.84 AUD	11.72%	511	20,745,624.27 AUD	544	13,110,683.57 AUD	952	31,054,383.78 AUD	103	2,801,924.06 AUD
7.01% - 8.00%	1,622	13.57%	45,621,710.88 AUD	15.79%	710	25,817,788.49 AUD	912	19,803,922.39 AUD	1,325	38,409,708.49 AUD	297	7,212,002.39 AUD
8.01% - 9.00%	2,495	20.87%	59,593,518.38 AUD	20.63%	1,249	37,893,333.12 AUD	1,246	21,700,185.26 AUD	2,111	52,023,486.95 AUD	384	7,570,031.43 AUD
9.01% - 10.00%	2,075	17.36%	42,140,189.15 AUD	14.59%	989	25,386,190.61 AUD	1,086	16,753,998.54 AUD	1,687	35,452,197.55 AUD	388	6,687,991.60 AUD
10.01% - 11.00%	1,030	8.62%	20,406,786.63 AUD	7.06%	384	10,473,789.96 AUD	646	9,932,996.67 AUD	824	17,219,191.54 AUD	206	3,187,595.09 AUD
11.01% - 12.00%	475	3.97%	9,501,164.25 AUD	3.29%	177	4,351,992.83 AUD	298	5,149,171.42 AUD	355	7,573,209.14 AUD	120	1,927,955.11 AUD
12.01% - 13.00%	255	2.13%	4,880,244.24 AUD	1.69%	74	1,842,760.30 AUD	181	3,037,483.94 AUD	180	3,746,304.40 AUD	75	1,133,939.84 AUD
13.01% - 14.00%	98	0.82%	1,736,554.02 AUD	0.60%	33	756,275.85 AUD	65	980,278.17 AUD	68	1,256,394.68 AUD	30	480,159.34 AUD
14.01% - 15.00%	80	0.67%	1,506,126.64 AUD	0.52%	18	411,564.18 AUD	62	1,094,562.46 AUD	44	970,422.70 AUD	36	535,703.94 AUD
15.01% - 16.00%	51	0.43%	859,747.84 AUD	0.30%	18	401,114.06 AUD	33	458,633.78 AUD	32	663,235.43 AUD	19	196,512.41 AUD
> 16.00%	4	0.03%	27,654.25 AUD	0.01%	1	21,129.39 AUD	3	6,524.86 AUD	1	4,506.94 AUD	3	23,147.31 AUD
<b>Total</b>	<b>11,954</b>	<b>100.00%</b>	<b>288,853,231.69 AUD</b>	<b>100.00%</b>	<b>5,635</b>	<b>172,486,942.11 AUD</b>	<b>6,319</b>	<b>116,366,289.58 AUD</b>	<b>10,199</b>	<b>255,005,462.05 AUD</b>	<b>1,755</b>	<b>33,847,769.64 AUD</b>

Statistics Interest Rate		
Minimum Interest Rate Debtor		0.00%
Maximum Interest Rate Debtor		16.95%
Weighted Average Interest Rate Debtor		7.40%

Pool Data V

Original Term

Total Portfolio					Product Type					
Length of Original Term (months)	Number of Contracts	Percentage of Contracts	Outstanding Discounted Balance	Percentage of Balance	Hire Purchase		Chattel Mortgage		Consumer Loan	
					Number of Contracts	Outstanding Discounted Balance	Number of Contracts	Outstanding Discounted Balance	Number of Contracts	Outstanding Discounted Balance
0 - 11	-	0.00%	- AUD	0.00%	-	- AUD	-	- AUD	-	- AUD
12 - 23	8	0.07%	61,216.02 AUD	0.02%	-	- AUD	-	- AUD	8	61,216.02 AUD
24 - 35	91	0.76%	619,122.14 AUD	0.21%	-	- AUD	10	69,102.01 AUD	81	550,020.13 AUD
36 - 47	805	6.73%	11,802,901.51 AUD	4.09%	48	531,425.21 AUD	142	2,419,342.18 AUD	615	8,852,134.12 AUD
48 - 59	3,531	29.54%	85,909,226.00 AUD	29.74%	397	9,706,350.06 AUD	855	21,703,780.91 AUD	2,279	54,499,095.03 AUD
60 - 71	6,633	55.49%	162,916,363.02 AUD	56.40%	1,230	31,508,668.91 AUD	2,297	55,077,972.47 AUD	3,106	76,329,721.64 AUD
> 71	886	7.41%	27,544,403.00 AUD	9.54%	-	- AUD	-	- AUD	886	27,544,403.00 AUD
<b>Total</b>	<b>11,954</b>	<b>100.00%</b>	<b>288,853,231.69 AUD</b>	<b>100.00%</b>	<b>1,675</b>	<b>41,746,444.18 AUD</b>	<b>3,304</b>	<b>79,270,197.57 AUD</b>	<b>6,975</b>	<b>167,836,589.94 AUD</b>

Statistics Original Term		
Minimum Original Term in months		18
Maximum Original Term in months		84
Weighted Average Original Term month (by ODPB)		57.61

Remaining Term

Total Portfolio					Product Type					
Length of Remaining Term (months)	Number of Contracts	Percentage of Contracts	Outstanding Discounted Balance	Percentage of Balance	Hire Purchase		Chattel Mortgage		Consumer Loan	
					Number of Contracts	Outstanding Discounted Balance	Number of Contracts	Outstanding Discounted Balance	Number of Contracts	Outstanding Discounted Balance
0 - 11	2,635	22.04%	38,702,303.21 AUD	13.40%	711	13,075,565.75 AUD	1,147	18,510,478.82 AUD	777	7,116,258.64 AUD
12 - 23	3,695	30.91%	83,430,599.13 AUD	28.88%	706	19,641,626.29 AUD	1,083	27,922,632.33 AUD	1,906	35,866,340.51 AUD
24 - 35	2,964	24.80%	82,960,344.84 AUD	28.72%	256	8,978,986.54 AUD	727	21,417,789.90 AUD	1,981	52,563,568.40 AUD
36 - 47	1,891	15.82%	58,203,670.75 AUD	20.15%	2	50,265.60 AUD	347	11,419,296.52 AUD	1,542	46,734,108.63 AUD
48 - 59	291	2.43%	8,863,131.91 AUD	3.07%	-	- AUD	-	- AUD	291	8,863,131.91 AUD
60 - 71	476	3.98%	16,599,654.35 AUD	5.75%	-	- AUD	-	- AUD	476	16,599,654.35 AUD
> 71	2	0.02%	93,527.50 AUD	0.03%	-	- AUD	-	- AUD	2	93,527.50 AUD
<b>Total</b>	<b>11,954</b>	<b>100.00%</b>	<b>288,853,231.69 AUD</b>	<b>100.00%</b>	<b>1,675</b>	<b>41,746,444.18 AUD</b>	<b>3,304</b>	<b>79,270,197.57 AUD</b>	<b>6,975</b>	<b>167,836,589.94 AUD</b>

Statistics Remaining Term		
Minimum Remaining Term in months		0
Maximum Remaining Term in months		73
Weighted Average Remaining Term in months (by ODPB)		28.32

Distribution by Seasoning

Total Portfolio					Product Type					
Seasoning (months)	Number of Contracts	Percentage of Contracts	Outstanding Discounted Balance	Percentage of Balance	Hire Purchase		Chattel Mortgage		Consumer Loan	
					Number of Contracts	Outstanding Discounted Balance	Number of Contracts	Outstanding Discounted Balance	Number of Contracts	Outstanding Discounted Balance
0 - 11	3	0.03%	139,995.29 AUD	0.05%	-	- AUD	-	- AUD	3	139,995.29 AUD
12 - 23	3,954	33.08%	115,717,443.02 AUD	40.06%	3	104,948.73 AUD	618	19,447,206.35 AUD	3,333	96,165,287.94 AUD
24 - 35	3,474	29.06%	81,600,338.92 AUD	28.25%	273	8,244,441.62 AUD	724	18,472,207.46 AUD	2,477	54,883,689.84 AUD
36 - 47	2,751	23.01%	64,537,626.39 AUD	22.34%	882	24,122,466.50 AUD	1,095	27,169,627.79 AUD	774	13,245,532.10 AUD
48 - 59	1,630	13.64%	24,920,246.46 AUD	8.63%	461	8,612,927.08 AUD	797	12,985,371.74 AUD	372	3,321,947.64 AUD
60 - 71	142	1.19%	1,937,581.61 AUD	0.67%	56	661,660.25 AUD	70	1,195,784.23 AUD	16	80,137.13 AUD
> 71	-	0.00%	- AUD	0.00%	-	- AUD	-	- AUD	-	- AUD
<b>Total</b>	<b>11,954</b>	<b>100.00%</b>	<b>288,853,231.69 AUD</b>	<b>100.00%</b>	<b>1,675</b>	<b>41,746,444.18 AUD</b>	<b>3,304</b>	<b>79,270,197.57 AUD</b>	<b>6,975</b>	<b>167,836,589.94 AUD</b>

Statistics Seasoning		
Minimum Seasoning in months		11
Maximum Seasoning in months		70
Weighted Average Seasoning Term in months (by ODPB)		29.52

## Pool Data V

### Original Term

Total Portfolio					Balloon				Vehicle Status			
Length of Original Term (months)	Number of Contracts	Percentage of Contracts	Outstanding Discounted Balance	Percentage of Balance	Balloon		No Balloon		New		Used	
					Number of Contracts	Outstanding Discounted Balance	Number of Contracts	Outstanding Discounted Balance	Number of Contracts	Outstanding Discounted Balance	Number of Contracts	Outstanding Discounted Balance
0 - 11	-	0.00%	- AUD	0.00%	-	- AUD	-	- AUD	-	- AUD	-	- AUD
12 - 23	8	0.07%	61,216.02 AUD	0.02%	2	43,219.15 AUD	6	17,996.87 AUD	4	48,889.69 AUD	4	12,326.33 AUD
24 - 35	91	0.76%	619,122.14 AUD	0.21%	4	70,237.86 AUD	87	548,884.28 AUD	65	481,030.89 AUD	26	138,091.25 AUD
36 - 47	805	6.73%	11,802,901.51 AUD	4.09%	238	5,867,001.93 AUD	567	5,935,899.58 AUD	639	9,925,478.84 AUD	166	1,877,422.67 AUD
48 - 59	3,531	29.54%	85,909,226.00 AUD	29.74%	1,978	58,534,461.75 AUD	1,553	27,374,764.25 AUD	3,235	80,987,397.33 AUD	296	4,921,828.67 AUD
60 - 71	6,633	55.49%	162,916,363.02 AUD	56.40%	3,413	107,972,021.42 AUD	3,220	54,944,341.60 AUD	5,541	141,214,166.98 AUD	1,092	21,702,196.04 AUD
> 71	886	7.41%	27,544,403.00 AUD	9.54%	-	- AUD	886	27,544,403.00 AUD	715	22,348,498.32 AUD	171	5,195,904.68 AUD
<b>Total</b>	<b>11,954</b>	<b>100.00%</b>	<b>288,853,231.69 AUD</b>	<b>100.00%</b>	<b>5,635</b>	<b>172,486,942.11 AUD</b>	<b>6,319</b>	<b>116,366,289.58 AUD</b>	<b>10,199</b>	<b>255,005,462.05 AUD</b>	<b>1,755</b>	<b>33,847,769.64 AUD</b>

Statistics Original Term			
Minimum Original Term in months			18
Maximum Original Term in months			84
Weighted Average Original Term month (by ODPB)			57.61

### Remaining Term

Total Portfolio					Balloon				Vehicle Status			
Length of Remaining Term (months)	Number of Contracts	Percentage of Contracts	Outstanding Discounted Balance	Percentage of Balance	Balloon		No Balloon		New		Used	
					Number of Contracts	Outstanding Discounted Balance	Number of Contracts	Outstanding Discounted Balance	Number of Contracts	Outstanding Discounted Balance	Number of Contracts	Outstanding Discounted Balance
0 - 11	2,635	22.04%	38,702,303.21 AUD	13.40%	1,533	33,238,325.85 AUD	1,102	5,463,977.36 AUD	2,241	34,741,947.25 AUD	394	3,960,355.96 AUD
12 - 23	3,695	30.91%	83,430,599.13 AUD	28.88%	1,936	58,810,370.55 AUD	1,759	24,620,228.58 AUD	3,227	75,259,407.92 AUD	468	8,171,191.21 AUD
24 - 35	2,964	24.80%	82,960,344.84 AUD	28.72%	1,472	51,695,074.54 AUD	1,492	31,265,270.30 AUD	2,589	75,429,289.34 AUD	375	7,531,055.50 AUD
36 - 47	1,891	15.82%	58,203,670.75 AUD	20.15%	693	28,655,611.23 AUD	1,198	29,548,059.52 AUD	1,530	48,978,534.06 AUD	361	9,225,136.69 AUD
48 - 59	291	2.43%	8,863,131.91 AUD	3.07%	1	87,559.94 AUD	290	8,775,571.97 AUD	236	7,391,031.60 AUD	55	1,472,100.31 AUD
60 - 71	476	3.98%	16,599,654.35 AUD	5.75%	-	- AUD	476	16,599,654.35 AUD	376	13,205,251.88 AUD	100	3,394,402.47 AUD
> 71	2	0.02%	93,527.50 AUD	0.03%	-	- AUD	2	93,527.50 AUD	-	- AUD	2	93,527.50 AUD
<b>Total</b>	<b>11,954</b>	<b>100.00%</b>	<b>288,853,231.69 AUD</b>	<b>100.00%</b>	<b>5,635</b>	<b>172,486,942.11 AUD</b>	<b>6,319</b>	<b>116,366,289.58 AUD</b>	<b>10,199</b>	<b>255,005,462.05 AUD</b>	<b>1,755</b>	<b>33,847,769.64 AUD</b>

Statistics Remaining Term			
Minimum Remaining Term in months			0
Maximum Remaining Term in months			73
Weighted Average Remaining Term in months (by ODPB)			28.32

### Distribution by Seasoning

Total Portfolio					Balloon				Vehicle Status			
Seasoning (months)	Number of Contracts	Percentage of Contracts	Outstanding Discounted Balance	Percentage of Balance	Balloon		No Balloon		New		Used	
					Number of Contracts	Outstanding Discounted Balance	Number of Contracts	Outstanding Discounted Balance	Number of Contracts	Outstanding Discounted Balance	Number of Contracts	Outstanding Discounted Balance
0 - 11	3	0.03%	139,995.29 AUD	0.05%	1	46,467.79 AUD	2	93,527.50 AUD	1	46,467.79 AUD	2	93,527.50 AUD
12 - 23	3,954	33.08%	115,717,443.02 AUD	40.06%	1,432	53,000,927.50 AUD	2,522	62,716,515.52 AUD	3,338	100,844,360.96 AUD	616	14,873,082.06 AUD
24 - 35	3,474	29.06%	81,600,338.92 AUD	28.25%	1,457	45,799,140.95 AUD	2,017	35,801,197.97 AUD	2,961	72,336,093.07 AUD	513	9,264,245.85 AUD
36 - 47	2,751	23.01%	64,537,626.39 AUD	22.34%	1,642	50,021,872.32 AUD	1,109	14,515,754.07 AUD	2,372	57,479,754.51 AUD	379	7,057,871.88 AUD
48 - 59	1,630	13.64%	24,920,246.46 AUD	8.63%	998	21,761,108.07 AUD	632	3,159,138.39 AUD	1,396	22,502,601.25 AUD	234	2,417,645.21 AUD
60 - 71	142	1.19%	1,937,581.61 AUD	0.67%	105	1,857,425.48 AUD	37	80,156.13 AUD	131	1,796,184.47 AUD	11	141,397.14 AUD
> 71	-	0.00%	- AUD	0.00%	-	- AUD	-	- AUD	-	- AUD	-	- AUD
<b>Total</b>	<b>11,954</b>	<b>100.00%</b>	<b>288,853,231.69 AUD</b>	<b>100.00%</b>	<b>5,635</b>	<b>172,486,942.11 AUD</b>	<b>6,319</b>	<b>116,366,289.58 AUD</b>	<b>10,199</b>	<b>255,005,462.05 AUD</b>	<b>1,755</b>	<b>33,847,769.64 AUD</b>

Statistics Seasoning			
Minimum Seasoning in months			11
Maximum Seasoning in months			70
Weighted Average Seasoning Term in months (by ODPB)			29.52

## Pool Data VI

### Product Type

Total Portfolio					Balloon				Vehicle Status			
Product Type	Number of Contracts	Percentage of Contracts	Outstanding Discounted Balance	Percentage of Balance	Balloon		No Balloon		New		Used	
					Number of Contracts	Outstanding Discounted Balance	Number of Contracts	Outstanding Discounted Balance	Number of Contracts	Outstanding Discounted Balance	Number of Contracts	Outstanding Discounted Balance
Hire Purchase	1,675	14.01%	41,746,444.18 AUD	14.45%	1,205	36,352,850.61 AUD	470	5,393,593.57 AUD	1,413	36,920,926.09 AUD	262	4,825,518.09 AUD
Chattel Mortgage	3,304	27.64%	79,270,197.57 AUD	27.44%	2,141	61,922,697.02 AUD	1,163	17,347,500.55 AUD	2,946	72,209,225.55 AUD	358	7,060,972.02 AUD
Consumer Loan	6,975	58.35%	167,836,589.94 AUD	58.10%	2,289	74,211,394.48 AUD	4,686	93,625,195.46 AUD	5,840	145,875,310.41 AUD	1,135	21,961,279.53 AUD
<b>Total</b>	<b>11,954</b>	<b>100.00%</b>	<b>288,853,231.69 AUD</b>	<b>100.00%</b>	<b>5,635</b>	<b>172,486,942.11 AUD</b>	<b>6,319</b>	<b>116,366,289.58 AUD</b>	<b>10,199</b>	<b>255,005,462.05 AUD</b>	<b>1,755</b>	<b>33,847,769.64 AUD</b>

### Vehicle Status

Total Portfolio					Product Type					
Type of Car	Number of Contracts	Percentage of Contracts	Outstanding Discounted Balance	Percentage of Balance	Hire Purchase		Chattel Mortgage		Consumer Loan	
					Number of Contracts	Outstanding Discounted Balance	Number of Contracts	Outstanding Discounted Balance	Number of Contracts	Outstanding Discounted Balance
New Vehicles	10,199	85.32%	255,005,462.05 AUD	88.28%	1,413	36,920,926.09 AUD	2,946	72,209,225.55 AUD	5,840	145,875,310.41 AUD
Used Vehicles	1,755	14.68%	33,847,769.64 AUD	11.72%	262	4,825,518.09 AUD	358	7,060,972.02 AUD	1,135	21,961,279.53 AUD
<b>Total</b>	<b>11,954</b>	<b>100.00%</b>	<b>288,853,231.69 AUD</b>	<b>100.00%</b>	<b>1,675</b>	<b>41,746,444.18 AUD</b>	<b>3,304</b>	<b>79,270,197.57 AUD</b>	<b>6,975</b>	<b>167,836,589.94 AUD</b>

### Balloon

Total Portfolio				
Balloon	Number of Contracts	Percentage of Contracts	Outstanding Discounted Balance	Percentage of Balance
Balloon	5,635	47.14%	172,486,942.11 AUD	59.71%
No Balloon	6,319	52.86%	116,366,289.58 AUD	40.29%
<b>Total</b>	<b>11,954</b>	<b>100.00%</b>	<b>288,853,231.69 AUD</b>	<b>100.00%</b>

Pool Data VII

Distribution by Vehicle Brand and Models

Total Portfolio						Product Type					
Make	Model	Number of Contracts	Percentage of Contracts	Outstanding Discounted Balance	Percentage of Balance	Hire Purchase		Chattel Mortgage		Consumer Loan	
						Number of Contracts	Outstanding Discounted Balance	Number of Contracts	Outstanding Discounted Balance	Number of Contracts	Outstanding Discounted Balance
Volkswagen Group Vehicles											
AUDI	A1	281	2.35%	5,300,782.30 AUD	1.84%	32	663,114.68 AUD	31	592,364.38 AUD	218	4,045,303.24 AUD
	A3	359	3.00%	8,501,689.76 AUD	2.94%	86	1,857,384.74 AUD	77	1,854,349.79 AUD	196	4,789,955.23 AUD
	A4	762	6.37%	23,831,109.87 AUD	8.25%	146	3,938,181.78 AUD	158	4,823,895.45 AUD	458	15,069,032.64 AUD
	A5	331	2.77%	15,006,430.39 AUD	5.20%	130	5,900,451.94 AUD	89	4,029,713.08 AUD	112	5,076,265.37 AUD
	A6	106	0.89%	3,989,292.20 AUD	1.38%	28	950,004.47 AUD	36	1,300,053.67 AUD	42	1,739,234.06 AUD
	A7	13	0.11%	1,129,722.49 AUD	0.39%	2	188,206.99 AUD	6	496,377.22 AUD	5	445,138.28 AUD
	A8	15	0.13%	725,046.73 AUD	0.25%	4	293,712.14 AUD	5	189,968.76 AUD	6	241,365.83 AUD
	Q3	148	1.24%	5,557,072.20 AUD	1.92%	1	39,280.71 AUD	17	665,432.84 AUD	130	4,852,358.65 AUD
	Q5	462	3.86%	17,818,843.15 AUD	6.17%	122	4,156,749.66 AUD	140	5,435,125.71 AUD	200	8,226,967.78 AUD
	Q7	261	2.18%	12,081,494.02 AUD	4.18%	84	3,762,764.89 AUD	96	4,337,975.50 AUD	81	3,980,753.63 AUD
	R8	3	0.03%	457,146.85 AUD	0.16%	2	238,203.22 AUD	1	218,943.63 AUD	-	- AUD
	TT	81	0.68%	2,967,776.75 AUD	1.03%	20	595,742.87 AUD	28	1,215,826.95 AUD	33	1,156,206.93 AUD
	SubTotal	2,822	23.61%	97,366,406.71 AUD	33.71%	657	22,583,798.09 AUD	684	25,160,026.98 AUD	1,481	49,622,581.64 AUD
BENTLEY	CONTINENTAL	-	0.00%	- AUD	0.00%	-	- AUD	-	- AUD	-	- AUD
	MULSANNE	1	0.01%	311,030.84 AUD	0.11%	-	- AUD	-	- AUD	1	311,030.84 AUD
	SubTotal	1	0.01%	311,030.84 AUD	0.11%	-	- AUD	-	- AUD	1	311,030.84 AUD
LAMBORGHINI	GALLARDO	-	0.00%	- AUD	0.00%	-	- AUD	-	- AUD	-	- AUD
	SubTotal	-	0.00%	- AUD	0.00%	-	- AUD	-	- AUD	-	- AUD
PORSCHE	BOXTER / CAYMAN	2	0.02%	93,296.04 AUD	0.03%	2	93,296.04 AUD	-	- AUD	-	- AUD
	CARRERA / 911	-	0.00%	- AUD	0.00%	-	- AUD	-	- AUD	-	- AUD
	CAYENNE	3	0.03%	173,475.63 AUD	0.06%	3	173,475.63 AUD	-	- AUD	-	- AUD
	SubTotal	5	0.04%	266,771.67 AUD	0.09%	5	266,771.67 AUD	-	- AUD	-	- AUD
SKODA	FABIA	16	0.13%	263,408.02 AUD	0.09%	-	- AUD	1	15,092.30 AUD	15	248,315.72 AUD
	OCTAVIA	170	1.42%	2,613,216.87 AUD	0.90%	18	229,585.30 AUD	37	556,245.82 AUD	115	1,827,385.75 AUD
	ROOMSTER	1	0.01%	16,178.44 AUD	0.01%	-	- AUD	-	- AUD	1	16,178.44 AUD
	SUPERB	63	0.53%	1,418,555.94 AUD	0.49%	7	152,291.63 AUD	13	278,780.66 AUD	43	987,483.65 AUD
	YETI	74	0.62%	1,312,473.04 AUD	0.45%	1	27,240.52 AUD	9	168,846.20 AUD	64	1,116,386.32 AUD
	SubTotal	324	2.71%	5,623,832.31 AUD	1.95%	26	409,117.45 AUD	60	1,018,964.98 AUD	238	4,195,749.88 AUD
VOLKSWAGEN	AMAROK	715	5.98%	21,185,005.87 AUD	7.33%	53	1,389,223.82 AUD	355	9,876,678.99 AUD	307	9,919,103.06 AUD
	BORA	1	0.01%	5,808.85 AUD	0.00%	-	- AUD	-	- AUD	1	5,808.85 AUD
	CADDY	265	2.22%	3,655,238.46 AUD	1.27%	47	566,174.27 AUD	183	2,470,828.73 AUD	35	618,235.46 AUD
	CRAFTER	38	0.32%	939,858.97 AUD	0.33%	7	102,331.83 AUD	30	799,865.20 AUD	1	37,661.94 AUD
	EOS	89	0.74%	2,051,398.48 AUD	0.71%	18	313,764.30 AUD	25	560,817.00 AUD	46	1,176,817.18 AUD
	GOLF	1,854	15.51%	36,017,305.72 AUD	12.47%	224	3,748,864.65 AUD	304	5,488,978.69 AUD	1,326	26,779,462.38 AUD
	JETTA	332	2.78%	5,883,540.36 AUD	2.04%	21	376,539.71 AUD	50	742,964.25 AUD	261	4,764,036.40 AUD
	NEW BEETLE	33	0.28%	666,462.19 AUD	0.23%	2	17,076.48 AUD	3	65,111.79 AUD	28	584,273.92 AUD
	PASSAT	503	4.21%	12,314,924.31 AUD	4.26%	82	1,741,988.96 AUD	152	3,458,897.05 AUD	269	7,114,038.30 AUD
	POLO	411	3.44%	6,238,216.85 AUD	2.16%	19	236,055.77 AUD	35	441,815.75 AUD	357	5,560,345.33 AUD
	SCIROCCO	40	0.33%	1,412,639.52 AUD	0.49%	1	38,429.31 AUD	-	- AUD	39	1,374,210.21 AUD
	TIGUAN	1,082	9.05%	21,274,120.39 AUD	7.37%	106	1,935,040.92 AUD	195	3,784,779.37 AUD	781	15,554,300.10 AUD
	TOUAREG	121	1.01%	5,367,610.28 AUD	1.86%	27	947,525.04 AUD	48	1,943,025.95 AUD	46	2,477,059.29 AUD
	TRANSPORTER	377	3.15%	7,777,697.84 AUD	2.69%	51	803,874.47 AUD	270	5,434,271.67 AUD	56	1,539,551.70 AUD
	UP	40	0.33%	407,589.08 AUD	0.14%	-	- AUD	-	- AUD	40	407,589.08 AUD
	SubTotal	5,901	49.36%	125,197,417.17 AUD	43.34%	658	12,216,889.53 AUD	1,650	35,068,034.44 AUD	3,593	77,912,493.20 AUD
Volkswagen Group Vehicles											
	SubTotal	9,053	75.73%	228,765,458.70 AUD	79.20%	1,346	35,476,576.74 AUD	2,394	61,247,026.40 AUD	5,313	132,041,855.56 AUD

Pool Data VII

Distribution by Vehicle Brand and Models

Total Portfolio						Balloon				Vehicle Status			
Make	Model	Number of Contracts	Percentage of Contracts	Outstanding Discounted Balance	Percentage of Balance	Balloon		No Balloon		New		Used	
						Number of Contracts	Outstanding Discounted Balance	Number of Contracts	Outstanding Discounted Balance	Number of Contracts	Outstanding Discounted Balance	Number of Contracts	Outstanding Discounted Balance
Volkswagen Group Vehicles													
AUDI	A1	281	2.35%	5,300,782.30 AUD	1.84%	145	3,184,475.19 AUD	136	2,116,307.11 AUD	247	4,729,274.72 AUD	34	571,507.58 AUD
	A3	359	3.00%	8,501,689.76 AUD	2.94%	210	6,151,579.01 AUD	149	2,350,110.75 AUD	269	6,968,588.88 AUD	90	1,533,100.88 AUD
	A4	762	6.37%	23,831,109.87 AUD	8.25%	488	17,236,658.89 AUD	274	6,594,450.98 AUD	548	19,244,403.87 AUD	214	4,586,706.00 AUD
	A5	331	2.77%	15,006,430.39 AUD	5.20%	254	12,775,926.70 AUD	77	2,230,503.69 AUD	279	12,764,541.33 AUD	52	2,241,889.06 AUD
	A6	106	0.89%	3,989,292.20 AUD	1.38%	74	3,291,836.63 AUD	32	697,455.57 AUD	58	2,739,884.69 AUD	48	1,249,407.51 AUD
	A7	13	0.11%	1,129,722.49 AUD	0.39%	10	938,346.89 AUD	3	191,375.60 AUD	11	980,864.08 AUD	2	148,858.41 AUD
	A8	15	0.13%	725,046.73 AUD	0.25%	10	548,585.25 AUD	5	176,461.48 AUD	8	487,204.32 AUD	7	237,842.41 AUD
	Q3	148	1.24%	5,557,072.20 AUD	1.92%	73	3,223,410.86 AUD	75	2,333,661.34 AUD	148	5,557,072.20 AUD	-	- AUD
	Q5	462	3.86%	17,818,843.15 AUD	6.17%	330	14,093,758.61 AUD	132	3,725,084.54 AUD	434	16,831,285.37 AUD	28	987,557.78 AUD
	Q7	261	2.18%	12,081,494.02 AUD	4.18%	188	9,588,172.35 AUD	73	2,493,321.67 AUD	218	10,503,806.86 AUD	43	1,577,687.16 AUD
	R8	3	0.03%	457,146.85 AUD	0.16%	3	457,146.85 AUD	-	- AUD	3	457,146.85 AUD	-	- AUD
	TT	81	0.68%	2,967,776.75 AUD	1.03%	54	2,442,947.35 AUD	27	524,829.40 AUD	54	2,306,270.86 AUD	27	661,505.89 AUD
	SubTotal	2,822	23.61%	97,366,406.71 AUD	33.71%	1,839	73,932,844.58 AUD	983	23,433,562.13 AUD	2,277	83,570,344.03 AUD	545	13,796,062.68 AUD
BENTLEY	CONTINENTAL	-	0.00%	- AUD	0.00%	-	- AUD	-	- AUD	-	- AUD	-	- AUD
	MULSANNE	1	0.01%	311,030.84 AUD	0.11%	1	311,030.84 AUD	-	- AUD	-	- AUD	1	311,030.84 AUD
	SubTotal	1	0.01%	311,030.84 AUD	0.11%	1	311,030.84 AUD	-	- AUD	-	- AUD	1	311,030.84 AUD
LAMBORGHINI	GALLARDO	-	0.00%	- AUD	0.00%	-	- AUD	-	- AUD	-	- AUD	-	- AUD
	SubTotal	-	0.00%	- AUD	0.00%	-	- AUD	-	- AUD	-	- AUD	-	- AUD
	PORSCHE	BOXTER / CAYMAN	2	0.02%	93,296.04 AUD	0.03%	2	93,296.04 AUD	-	- AUD	-	- AUD	2
	CARRERA / 911	-	0.00%	- AUD	0.00%	-	- AUD	-	- AUD	-	- AUD	-	- AUD
	CAYENNE	3	0.03%	173,475.63 AUD	0.06%	3	173,475.63 AUD	-	- AUD	2	142,147.28 AUD	1	31,328.35 AUD
	SubTotal	5	0.04%	266,771.67 AUD	0.09%	5	266,771.67 AUD	-	- AUD	2	142,147.28 AUD	3	124,624.39 AUD
SKODA	FABIA	16	0.13%	263,408.02 AUD	0.09%	3	45,806.19 AUD	13	217,601.83 AUD	16	263,408.02 AUD	-	- AUD
	OCTAVIA	170	1.42%	2,613,216.87 AUD	0.90%	78	1,372,456.60 AUD	92	1,240,760.27 AUD	157	2,449,835.44 AUD	13	163,381.43 AUD
	ROOMSTER	1	0.01%	16,178.44 AUD	0.01%	-	- AUD	1	16,178.44 AUD	1	16,178.44 AUD	-	- AUD
	SUPERB	63	0.53%	1,418,555.94 AUD	0.49%	35	904,100.12 AUD	28	514,455.82 AUD	58	1,331,751.85 AUD	5	86,804.09 AUD
	YETI	74	0.62%	1,312,473.04 AUD	0.45%	33	694,655.99 AUD	41	617,817.05 AUD	72	1,273,210.44 AUD	2	39,262.60 AUD
	SubTotal	324	2.71%	5,623,832.31 AUD	1.95%	149	3,017,018.90 AUD	175	2,606,813.41 AUD	304	5,334,384.19 AUD	20	289,448.12 AUD
VOLKSWAGEN	AMAROK	715	5.98%	21,185,005.87 AUD	7.33%	387	12,934,902.54 AUD	328	8,250,103.33 AUD	710	21,051,001.24 AUD	5	134,004.63 AUD
	BORA	1	0.01%	5,808.85 AUD	0.00%	-	- AUD	1	5,808.85 AUD	-	- AUD	1	5,808.85 AUD
	CADDY	265	2.22%	3,655,238.46 AUD	1.27%	118	1,832,929.48 AUD	147	1,822,308.98 AUD	251	3,536,566.66 AUD	14	118,671.80 AUD
	CRAFTER	38	0.32%	939,858.97 AUD	0.33%	19	587,203.28 AUD	19	352,655.69 AUD	37	935,010.77 AUD	1	4,848.20 AUD
	EOS	89	0.74%	2,051,398.48 AUD	0.71%	42	1,119,481.42 AUD	47	931,917.06 AUD	70	1,723,985.95 AUD	19	327,412.53 AUD
	GOLF	1,854	15.51%	36,017,305.72 AUD	12.47%	774	18,010,589.02 AUD	1,080	18,006,716.70 AUD	1,678	33,355,082.37 AUD	176	2,662,223.35 AUD
	JETTA	332	2.78%	5,883,540.36 AUD	2.04%	127	2,551,478.56 AUD	205	3,332,061.80 AUD	295	5,443,149.18 AUD	37	440,391.18 AUD
	NEW BEETLE	33	0.28%	666,462.19 AUD	0.23%	13	320,392.39 AUD	20	346,069.80 AUD	25	575,286.51 AUD	8	91,175.68 AUD
	PASSAT	503	4.21%	12,314,924.31 AUD	4.26%	284	7,739,333.20 AUD	219	4,575,591.11 AUD	449	11,319,792.27 AUD	54	995,132.04 AUD
	POLO	411	3.44%	6,238,216.85 AUD	2.16%	81	1,422,869.56 AUD	330	4,815,347.29 AUD	390	6,007,910.03 AUD	21	230,306.82 AUD
	SCIROCCO	40	0.33%	1,412,639.52 AUD	0.49%	20	754,173.71 AUD	20	658,465.81 AUD	37	1,301,484.75 AUD	3	111,154.77 AUD
	TIGUAN	1,082	9.05%	21,274,120.39 AUD	7.37%	469	10,865,117.24 AUD	613	10,409,003.15 AUD	1,052	20,714,468.75 AUD	30	559,651.64 AUD
	TOUAREG	121	1.01%	5,367,610.28 AUD	1.86%	76	3,646,323.20 AUD	45	1,721,287.08 AUD	108	4,873,394.19 AUD	13	494,216.09 AUD
	TRANSPORTER	377	3.15%	7,777,697.84 AUD	2.69%	207	5,162,867.83 AUD	170	2,614,830.01 AUD	350	7,317,974.24 AUD	27	459,723.60 AUD
	UP	40	0.33%	407,589.08 AUD	0.14%	5	64,927.72 AUD	35	342,661.36 AUD	40	407,589.08 AUD	-	- AUD
	SubTotal	5,901	49.36%	125,197,417.17 AUD	43.34%	2,622	67,012,589.15 AUD	3,279	58,184,828.02 AUD	5,492	118,562,695.99 AUD	409	6,634,721.18 AUD
Volkswagen Group Vehicles													
	SubTotal	9,053	75.73%	228,765,458.70 AUD	79.20%	4,616	144,540,255.14 AUD	4,437	84,225,203.56 AUD	8,075	207,609,571.49 AUD	978	21,155,887.21 AUD

Pool Data VII

Distribution by Vehicle Brand and Models

Total Portfolio						Product Type					
Make	Model	Number of Contracts	Percentage of Contracts	Outstanding Discounted Balance	Percentage of Balance	Hire Purchase		Chattel Mortgage		Consumer Loan	
						Number of Contracts	Outstanding Discounted Balance	Number of Contracts	Outstanding Discounted Balance	Number of Contracts	Outstanding Discounted Balance
Other Vehicles											
HOLDEN		754	6.31%	12,896,134.97 AUD	4.46%	72	1,003,019.36 AUD	242	4,243,102.07 AUD	440	7,650,013.54 AUD
LAND ROVER		233	1.95%	9,594,474.43 AUD	3.32%	39	1,756,618.37 AUD	79	2,844,350.16 AUD	115	4,993,505.90 AUD
SUBARU		345	2.89%	8,702,849.63 AUD	3.01%	35	467,591.86 AUD	40	821,384.64 AUD	270	7,413,873.13 AUD
NISSAN		236	1.97%	4,519,749.48 AUD	1.56%	17	237,550.91 AUD	125	2,342,771.49 AUD	94	1,939,427.08 AUD
FORD		218	1.82%	3,643,748.44 AUD	1.26%	23	287,014.14 AUD	83	1,510,954.51 AUD	112	1,845,779.79 AUD
MERCEDES-BENZ		81	0.68%	2,311,411.03 AUD	0.80%	17	477,354.35 AUD	38	1,022,411.92 AUD	26	811,644.76 AUD
TOYOTA		144	1.20%	1,864,619.18 AUD	0.65%	33	330,070.74 AUD	57	889,410.43 AUD	54	645,138.01 AUD
BMW		70	0.59%	1,756,776.89 AUD	0.61%	17	391,628.39 AUD	10	270,256.54 AUD	43	1,094,891.96 AUD
HONDA		137	1.15%	1,810,627.74 AUD	0.63%	13	131,607.98 AUD	27	392,239.06 AUD	97	1,286,780.70 AUD
VOLVO		53	0.44%	1,303,663.50 AUD	0.45%	8	221,769.55 AUD	24	560,221.33 AUD	21	521,672.62 AUD
SUZUKI		127	1.06%	1,609,964.79 AUD	0.56%	7	36,141.06 AUD	24	339,299.83 AUD	96	1,234,523.90 AUD
JAGUAR		26	0.22%	1,160,399.48 AUD	0.40%	6	183,972.70 AUD	8	327,784.77 AUD	12	648,642.01 AUD
KIA		85	0.71%	1,521,308.56 AUD	0.53%	4	86,537.83 AUD	24	398,450.89 AUD	57	1,036,319.84 AUD
MAZDA		81	0.68%	1,125,986.09 AUD	0.39%	6	38,238.76 AUD	22	307,664.64 AUD	53	780,082.69 AUD
MITSUBISHI		57	0.48%	877,646.94 AUD	0.30%	6	102,764.59 AUD	25	309,832.25 AUD	26	465,050.10 AUD
RENAULT		52	0.44%	1,108,912.03 AUD	0.38%	1	15,159.37 AUD	14	213,578.18 AUD	37	880,174.48 AUD
LEXUS		27	0.23%	562,682.69 AUD	0.19%	8	164,976.08 AUD	2	21,219.69 AUD	17	376,486.92 AUD
JEEP		22	0.18%	470,423.87 AUD	0.16%	2	85,594.65 AUD	11	185,855.53 AUD	9	198,973.69 AUD
MASERATI		3	0.03%	349,716.91 AUD	0.12%	1	80,296.27 AUD	1	42,666.50 AUD	1	226,754.14 AUD
HYUNDAI		29	0.24%	430,933.44 AUD	0.15%	2	35,079.17 AUD	14	171,917.13 AUD	13	223,937.14 AUD
ASTON MARTIN		2	0.02%	429,651.20 AUD	0.15%	-	- AUD	1	176,049.09 AUD	1	253,602.11 AUD
PEUGEOT		26	0.22%	333,521.56 AUD	0.12%	5	32,372.10 AUD	9	151,194.66 AUD	12	149,954.80 AUD
ISUZU		11	0.09%	300,006.19 AUD	0.10%	-	- AUD	5	127,336.01 AUD	6	172,670.18 AUD
ALFA ROMEO		13	0.11%	268,304.68 AUD	0.09%	2	36,933.87 AUD	1	23,128.92 AUD	10	208,241.89 AUD
OPEL		13	0.11%	296,742.48 AUD	0.10%	-	- AUD	1	25,625.62 AUD	12	271,116.86 AUD
FERRARI		-	0.00%	- AUD	0.00%	-	- AUD	-	- AUD	-	- AUD
GREAT WALL		14	0.12%	186,492.40 AUD	0.06%	-	- AUD	10	125,698.02 AUD	4	60,794.38 AUD
FIAT		11	0.09%	151,711.15 AUD	0.05%	3	31,442.67 AUD	4	65,995.06 AUD	4	54,273.42 AUD
SSANGYONG		7	0.06%	129,091.92 AUD	0.04%	-	- AUD	2	48,185.70 AUD	5	80,906.22 AUD
MINI		6	0.05%	118,816.51 AUD	0.04%	-	- AUD	-	- AUD	6	118,816.51 AUD
CITROEN		5	0.04%	59,410.81 AUD	0.02%	-	- AUD	2	25,779.31 AUD	3	33,631.50 AUD
DODGE		5	0.04%	82,902.57 AUD	0.03%	2	36,132.67 AUD	2	22,259.61 AUD	1	24,510.29 AUD
LOTUS		1	0.01%	47,079.54 AUD	0.02%	-	- AUD	-	- AUD	1	47,079.54 AUD
HUMMER		2	0.02%	23,845.72 AUD	0.01%	-	- AUD	-	- AUD	2	23,845.72 AUD
CHRYSLER		3	0.03%	18,172.08 AUD	0.01%	-	- AUD	2	8,565.06 AUD	1	9,607.02 AUD
SAAB		-	0.00%	- AUD	0.00%	-	- AUD	-	- AUD	-	- AUD
CHERY		2	0.02%	19,994.09 AUD	0.01%	-	- AUD	1	7,982.55 AUD	1	12,011.54 AUD
Other Vehicles	SubTotal	2,901	24.27%	60,087,772.99 AUD	20.80%	329	6,269,867.44 AUD	910	18,023,171.17 AUD	1,662	35,794,734.38 AUD
Total		11,954	100.00%	288,853,231.69 AUD	100.00%	1,675	41,746,444.18 AUD	3,304	79,270,197.57 AUD	6,975	167,836,589.94 AUD

Pool Data VII

Distribution by Vehicle Brand and Models

Total Portfolio						Balloon				Vehicle Status			
						Balloon		No Balloon		New		Used	
Make	Model	Number of Contracts	Percentage of Contracts	Outstanding Discounted Balance	Percentage of Balance	Number of Contracts	Outstanding Discounted Balance	Number of Contracts	Outstanding Discounted Balance	Number of Contracts	Outstanding Discounted Balance	Number of Contracts	Outstanding Discounted Balance
Other Vehicles													
HOLDEN		754	6.31%	12,896,134.97 AUD	4.46%	239	4,952,685.26 AUD	515	7,943,449.71 AUD	591	10,628,897.35 AUD	163	2,267,237.62 AUD
LAND ROVER		233	1.95%	9,594,474.43 AUD	3.32%	152	7,324,956.62 AUD	81	2,269,517.81 AUD	200	8,591,773.41 AUD	33	1,002,701.02 AUD
SUBARU		345	2.89%	8,702,849.63 AUD	3.01%	84	2,129,785.43 AUD	261	6,573,064.20 AUD	284	7,705,397.86 AUD	61	997,451.77 AUD
NISSAN		236	1.97%	4,519,749.48 AUD	1.56%	105	2,430,138.50 AUD	131	2,089,610.98 AUD	188	3,720,871.13 AUD	48	798,878.35 AUD
FORD		218	1.82%	3,643,748.44 AUD	1.26%	79	1,517,213.77 AUD	139	2,126,534.67 AUD	158	2,814,062.99 AUD	60	829,685.45 AUD
MERCEDES-BENZ		81	0.68%	2,311,411.03 AUD	0.80%	52	1,760,132.71 AUD	29	551,278.32 AUD	40	1,282,660.82 AUD	41	1,028,750.21 AUD
TOYOTA		144	1.20%	1,864,619.18 AUD	0.65%	54	964,988.45 AUD	90	899,630.73 AUD	75	1,118,279.42 AUD	69	746,339.76 AUD
BMW		70	0.59%	1,756,776.89 AUD	0.61%	16	585,583.93 AUD	54	1,171,192.96 AUD	10	429,125.18 AUD	60	1,327,651.71 AUD
HONDA		137	1.15%	1,810,627.74 AUD	0.63%	25	405,275.93 AUD	112	1,405,351.81 AUD	93	1,311,289.27 AUD	44	499,338.47 AUD
VOLVO		53	0.44%	1,303,663.50 AUD	0.45%	28	867,499.53 AUD	25	436,163.97 AUD	37	997,244.09 AUD	16	306,419.41 AUD
SUZUKI		127	1.06%	1,609,964.79 AUD	0.56%	16	285,938.86 AUD	111	1,324,025.93 AUD	114	1,439,917.85 AUD	13	170,046.94 AUD
JAGUAR		26	0.22%	1,160,399.48 AUD	0.40%	15	764,911.76 AUD	11	395,487.72 AUD	20	981,161.49 AUD	6	179,237.99 AUD
KIA		85	0.71%	1,521,308.56 AUD	0.53%	20	452,563.54 AUD	65	1,068,745.02 AUD	76	1,429,250.35 AUD	9	92,058.21 AUD
MAZDA		81	0.68%	1,125,986.09 AUD	0.39%	28	550,453.97 AUD	53	575,532.12 AUD	44	750,202.36 AUD	37	375,783.73 AUD
MITSUBISHI		57	0.48%	877,646.94 AUD	0.30%	16	309,313.87 AUD	41	568,333.07 AUD	38	598,829.62 AUD	19	278,817.32 AUD
RENAULT		52	0.44%	1,108,912.03 AUD	0.38%	15	377,027.73 AUD	37	731,884.30 AUD	35	825,463.45 AUD	17	283,448.58 AUD
LEXUS		27	0.23%	562,682.69 AUD	0.19%	9	230,038.42 AUD	18	332,644.27 AUD	2	34,015.89 AUD	25	528,666.80 AUD
JEEP		22	0.18%	470,423.87 AUD	0.16%	7	208,645.97 AUD	15	261,777.90 AUD	15	360,612.83 AUD	7	109,811.04 AUD
MASERATI		3	0.03%	349,716.91 AUD	0.12%	2	307,050.41 AUD	1	42,666.50 AUD	1	226,754.14 AUD	2	122,962.77 AUD
HYUNDAI		29	0.24%	430,933.44 AUD	0.15%	11	205,644.30 AUD	18	225,289.14 AUD	20	310,575.59 AUD	9	120,357.85 AUD
ASTON MARTIN		2	0.02%	429,651.20 AUD	0.15%	2	429,651.20 AUD	-	- AUD	1	253,602.11 AUD	1	176,049.09 AUD
PEUGEOT		26	0.22%	333,521.56 AUD	0.12%	12	201,983.19 AUD	14	131,538.37 AUD	15	237,042.98 AUD	11	96,478.58 AUD
ISUZU		11	0.09%	300,006.19 AUD	0.10%	5	127,336.01 AUD	6	172,670.18 AUD	11	300,006.19 AUD	-	- AUD
ALFA ROMEO		13	0.11%	268,304.68 AUD	0.09%	6	151,957.76 AUD	7	116,346.92 AUD	9	208,125.16 AUD	4	60,179.52 AUD
OPEL		13	0.11%	296,742.48 AUD	0.10%	3	58,835.67 AUD	10	237,906.81 AUD	13	296,742.48 AUD	-	- AUD
FERRARI		-	0.00%	- AUD	0.00%	-	- AUD	-	- AUD	-	- AUD	-	- AUD
GREAT WALL		14	0.12%	186,492.40 AUD	0.06%	4	63,931.62 AUD	10	122,560.78 AUD	12	153,508.43 AUD	2	32,983.97 AUD
FIAT		11	0.09%	151,711.15 AUD	0.05%	7	105,936.40 AUD	4	45,774.75 AUD	9	140,081.14 AUD	2	11,630.01 AUD
SSANGYONG		7	0.06%	129,091.92 AUD	0.04%	2	48,185.70 AUD	5	80,906.22 AUD	5	112,439.95 AUD	2	16,651.97 AUD
MINI		6	0.05%	118,816.51 AUD	0.04%	-	- AUD	6	118,816.51 AUD	-	- AUD	6	118,816.51 AUD
CITROEN		5	0.04%	59,410.81 AUD	0.02%	3	58,096.23 AUD	2	1,314.58 AUD	3	54,742.52 AUD	2	4,668.29 AUD
DODGE		5	0.04%	82,902.57 AUD	0.03%	1	23,844.69 AUD	4	59,057.88 AUD	1	12,287.98 AUD	4	70,614.59 AUD
LOTUS		1	0.01%	47,079.54 AUD	0.02%	1	47,079.54 AUD	-	- AUD	1	47,079.54 AUD	-	- AUD
HUMMER		2	0.02%	23,845.72 AUD	0.01%	-	- AUD	2	23,845.72 AUD	1	3,852.90 AUD	1	19,992.82 AUD
CHRYSLER		3	0.03%	18,172.08 AUD	0.01%	-	- AUD	3	18,172.08 AUD	-	- AUD	3	18,172.08 AUD
SAAB		-	0.00%	- AUD	0.00%	-	- AUD	-	- AUD	-	- AUD	-	- AUD
CHERY		2	0.02%	19,994.09 AUD	0.01%	-	- AUD	2	19,994.09 AUD	2	19,994.09 AUD	-	- AUD
Other Vehicles	SubTotal	2,901	24.27%	60,087,772.99 AUD	20.80%	1,019	27,946,686.97 AUD	1,882	32,141,086.02 AUD	2,124	47,395,890.56 AUD	777	12,691,882.43 AUD
Total		11,954	100.00%	288,853,231.69 AUD	100.00%	5,635	172,486,942.11 AUD	6,319	116,366,289.58 AUD	10,199	255,005,462.05 AUD	1,755	33,847,769.64 AUD

## Pool Data VIII

### Region

Total Portfolio					Product Type					
Region	Number of Contracts	Percentage of Contracts	Outstanding Discounted Balance	Percentage of Balance	Hire Purchase		Chattel Mortgage		Consumer Loan	
					Number of Contracts	Outstanding Discounted Balance	Number of Contracts	Outstanding Discounted Balance	Number of Contracts	Outstanding Discounted Balance
Australian Capital Territory	361	3.02%	8,536,632.52 AUD	2.96%	43	911,788.90 AUD	95	2,258,689.51 AUD	223	5,366,154.11 AUD
New South Wales	5,065	42.37%	128,490,684.02 AUD	44.48%	1,136	29,508,993.63 AUD	1,143	28,499,163.50 AUD	2,786	70,482,526.89 AUD
Northern Territory	31	0.26%	906,596.82 AUD	0.31%	-	- AUD	9	286,553.92 AUD	22	620,042.90 AUD
Queensland	1,694	14.17%	41,547,849.19 AUD	14.38%	77	1,857,964.22 AUD	533	12,687,989.82 AUD	1,084	27,001,895.15 AUD
South Australia	614	5.14%	16,006,055.62 AUD	5.54%	19	558,344.06 AUD	303	7,889,013.27 AUD	292	7,558,698.29 AUD
Tasmania	23	0.19%	517,592.47 AUD	0.18%	4	64,223.27 AUD	6	125,281.78 AUD	13	328,087.42 AUD
Victoria	3,425	28.65%	71,724,259.86 AUD	24.83%	379	8,196,435.01 AUD	1,008	20,977,020.01 AUD	2,038	42,550,804.84 AUD
Western Australia	741	6.20%	21,123,561.19 AUD	7.31%	17	648,695.09 AUD	207	6,546,485.76 AUD	517	13,928,380.34 AUD
<b>Total</b>	<b>11,954</b>	<b>100.00%</b>	<b>288,853,231.69 AUD</b>	<b>100.00%</b>	<b>1,675</b>	<b>41,746,444.18 AUD</b>	<b>3,304</b>	<b>79,270,197.57 AUD</b>	<b>6,975</b>	<b>167,836,589.94 AUD</b>

## Pool Data VIII

### Region

Total Portfolio					Balloon				Vehicle Status			
Region	Number of Contracts	Percentage of Contracts	Outstanding Discounted Balance	Percentage of Balance	Balloon		No Balloon		New		Used	
					Number of Contracts	Outstanding Discounted Balance	Number of Contracts	Outstanding Discounted Balance	Number of Contracts	Outstanding Discounted Balance	Number of Contracts	Outstanding Discounted Balance
Australian Capital Territory	361	3.02%	8,536,632.52 AUD	2.96%	126	3,845,114.37 AUD	235	4,691,518.15 AUD	297	7,512,526.96 AUD	64	1,024,105.56 AUD
New South Wales	5,065	42.37%	128,490,684.02 AUD	44.48%	2,520	80,213,097.17 AUD	2,545	48,277,586.85 AUD	4,188	110,699,624.55 AUD	877	17,791,059.47 AUD
Northern Territory	31	0.26%	906,596.82 AUD	0.31%	13	456,441.51 AUD	18	450,155.31 AUD	30	889,290.62 AUD	1	17,306.20 AUD
Queensland	1,694	14.17%	41,547,849.19 AUD	14.38%	792	24,243,545.07 AUD	902	17,304,304.12 AUD	1,519	37,868,352.33 AUD	175	3,679,496.86 AUD
South Australia	614	5.14%	16,006,055.62 AUD	5.54%	313	10,659,213.61 AUD	301	5,346,842.01 AUD	557	14,848,989.74 AUD	57	1,157,065.88 AUD
Tasmania	23	0.19%	517,592.47 AUD	0.18%	10	254,737.30 AUD	13	262,855.17 AUD	19	398,850.30 AUD	4	118,742.17 AUD
Victoria	3,425	28.65%	71,724,259.86 AUD	24.83%	1,530	39,836,755.81 AUD	1,895	31,887,504.05 AUD	2,969	64,536,740.60 AUD	456	7,187,519.26 AUD
Western Australia	741	6.20%	21,123,561.19 AUD	7.31%	331	12,978,037.27 AUD	410	8,145,523.92 AUD	620	18,251,086.95 AUD	121	2,872,474.24 AUD
<b>Total</b>	<b>11,954</b>	<b>100.00%</b>	<b>288,853,231.69 AUD</b>	<b>100.00%</b>	<b>5,635</b>	<b>172,486,942.11 AUD</b>	<b>6,319</b>	<b>116,366,289.58 AUD</b>	<b>10,199</b>	<b>255,005,462.05 AUD</b>	<b>1,755</b>	<b>33,847,769.64 AUD</b>

#### Individual Hardship Extensions\*

Individual Extensions Approved For After Poolcut*	Number of Contracts	Percentage of Contracts	Outstanding Discounted Principal Balance	Percentage of Balance
None	11,910	99.63%	287,512,412.37 AUD	99.54%
1	43	0.36%	1,249,842.60 AUD	0.43%
2	1	0.01%	90,976.72 AUD	0.03%
3	-	0.00%	0.00 AUD	0.00%
<b>Total</b>	<b>11,954</b>	<b>100.00%</b>	<b>288,853,231.69 AUD</b>	<b>100.00%</b>

\*Individual Hardship Extensions Approved For After Poolcut For Contracts Active At End of Reporting Period

**Contract Level Data - Net Salvage Recoveries By Contract By Month**

No.	Month / Year of Origination	Month / Year of Net Salvage	Net Amount Financed (Original Balance)	Outstanding Discounted Balance of Contract at Net Salvage	Arrears Interest At Net Salvage	Net Salvage Loss	Recoveries After Net Salvage	Net Salvage Loss After Recoveries	Loss Percentage on Original Balance	Geographical Location of Borrower	Vehicle Type (New/Used)	Vehicle Manufacturer	Product Type
1	03/2013	01/2014	16,935.23 AUD	13,196.74 AUD	- AUD	13,196.74 AUD	1,815.92 AUD	11,380.82 AUD	43.19%	Queensland	New	VOLKSWAGEN	Chattel Mortgage
2	08/2013	01/2014	14,785.15 AUD	13,508.04 AUD	- AUD	13,508.04 AUD	467.88 AUD	13,040.16 AUD	67.02%	Northern Territory	Used	MITSUBISHI	Consumer Loan
3	01/2012	02/2014	43,216.00 AUD	16,558.04 AUD	- AUD	16,558.04 AUD	(896.88) AUD	17,454.92 AUD	32.12%	New South Wales	New	FORD	Chattel Mortgage
4	04/2013	02/2014	15,017.00 AUD	7,922.78 AUD	- AUD	7,922.78 AUD	- AUD	7,922.78 AUD	41.09%	Western Australia	Used	VOLKSWAGEN	Consumer Loan
5	09/2011	04/2014	76,410.00 AUD	31,527.23 AUD	- AUD	31,527.23 AUD	464.37 AUD	31,062.86 AUD	34.37%	Queensland	New	VOLKSWAGEN	Chattel Mortgage
6	02/2009	06/2014	46,897.20 AUD	13,543.92 AUD	- AUD	13,543.92 AUD	- AUD	13,543.92 AUD	27.49%	Victoria	Used	AUDI	Hire Purchase
7	09/2010	06/2014	27,186.00 AUD	5,236.55 AUD	- AUD	5,236.55 AUD	- AUD	5,236.55 AUD	15.43%	Victoria	Used	HOLDEN	Hire Purchase
8	07/2011	06/2014	12,848.00 AUD	4,138.89 AUD	- AUD	4,138.89 AUD	- AUD	4,138.89 AUD	26.09%	Queensland	Used	HOLDEN	Chattel Mortgage
9	08/2013	06/2014	35,148.00 AUD	11,672.91 AUD	- AUD	11,672.91 AUD	- AUD	11,672.91 AUD	34.41%	Victoria	New	VOLKSWAGEN	Chattel Mortgage
10	12/2010	07/2014	51,842.00 AUD	20,908.65 AUD	- AUD	20,908.65 AUD	- AUD	20,908.65 AUD	35.13%	South Australia	New	VOLKSWAGEN	Chattel Mortgage
11	01/2011	07/2014	53,053.00 AUD	9,578.33 AUD	- AUD	9,578.33 AUD	- AUD	9,578.33 AUD	14.95%	Queensland	New	VOLKSWAGEN	Chattel Mortgage
12	06/2011	07/2014	170,398.00 AUD	53,568.69 AUD	- AUD	53,568.69 AUD	- AUD	53,568.69 AUD	20.08%	New South Wales	New	AUDI	Hire Purchase
13	08/2011	07/2014	31,006.00 AUD	4,143.24 AUD	- AUD	4,143.24 AUD	587.06 AUD	3,556.18 AUD	4.90%	Queensland	Used	VOLKSWAGEN	Chattel Mortgage
14	10/2011	07/2014	53,332.80 AUD	41,756.38 AUD	1,349.27 AUD	43,105.65 AUD	18,216.50 AUD	24,889.15 AUD	41.77%	Queensland	New	FORD	Chattel Mortgage
15	09/2012	07/2014	59,778.61 AUD	12,271.19 AUD	- AUD	12,271.19 AUD	- AUD	12,271.19 AUD	17.60%	Queensland	New	VOLKSWAGEN	Consumer Loan
16	02/2013	07/2014	58,727.00 AUD	14,822.59 AUD	- AUD	14,822.59 AUD	- AUD	14,822.59 AUD	23.54%	New South Wales	New	VOLKSWAGEN	Consumer Loan
17	05/2009	08/2014	40,398.00 AUD	596.63 AUD	- AUD	596.63 AUD	- AUD	596.63 AUD	1.44%	Victoria	New	VOLKSWAGEN	Consumer Loan
18	03/2010	08/2014	53,431.51 AUD	15,570.66 AUD	- AUD	15,570.66 AUD	351.36 AUD	15,219.30 AUD	31.98%	Queensland	New	AUDI	Chattel Mortgage
19	04/2011	08/2014	46,604.00 AUD	14,367.87 AUD	- AUD	14,367.87 AUD	- AUD	14,367.87 AUD	25.32%	Australian Capital Territory	New	SKODA	Chattel Mortgage
20	07/2013	08/2014	28,465.48 AUD	16,858.37 AUD	- AUD	16,858.37 AUD	- AUD	16,858.37 AUD	41.39%	Australian Capital Territory	Used	NISSAN	Consumer Loan
21	06/2011	09/2014	49,835.51 AUD	20,377.33 AUD	- AUD	20,377.33 AUD	- AUD	20,377.33 AUD	31.27%	New South Wales	Used	VOLKSWAGEN	Hire Purchase
22	12/2011	09/2014	111,985.00 AUD	34,368.87 AUD	- AUD	34,368.87 AUD	509.22 AUD	33,859.65 AUD	20.54%	New South Wales	New	AUDI	Chattel Mortgage
23	03/2013	09/2014	28,272.09 AUD	10,350.90 AUD	- AUD	10,350.90 AUD	- AUD	10,350.90 AUD	29.08%	Western Australia	Used	AUDI	Consumer Loan
24	06/2009	10/2014	26,598.00 AUD	582.61 AUD	- AUD	582.61 AUD	- AUD	582.61 AUD	5.20%	Queensland	New	FORD	Chattel Mortgage
25	07/2010	10/2014	154,143.00 AUD	30,627.90 AUD	- AUD	30,627.90 AUD	- AUD	30,627.90 AUD	18.94%	New South Wales	New	AUDI	Hire Purchase
26	10/2012	10/2014	53,905.00 AUD	10,322.56 AUD	- AUD	10,322.56 AUD	- AUD	10,322.56 AUD	9.07%	New South Wales	New	AUDI	Chattel Mortgage
<b>Total</b>	<b>26</b>		<b>1,360,217.58 AUD</b>	<b>428,377.87 AUD</b>	<b>1,349.27 AUD</b>	<b>429,727.14 AUD</b>	<b>21,515.43 AUD</b>	<b>408,211.71 AUD</b>					

Contract Level Data - Net Salvage Recove

No.	Month / Year of Origination	Month / Year of Net Salvage	Nov-13	Dec-13	Jan-14	Feb-14	Mar-14	Apr-14	May-14	Jun-14	Jul-14
1	03/2013	01/2014	- AUD	- AUD	- AUD	1,815.92 AUD	- AUD	- AUD	- AUD	- AUD	- AUD
2	08/2013	01/2014	- AUD	- AUD	- AUD	467.88 AUD	- AUD	- AUD	- AUD	- AUD	- AUD
3	01/2012	02/2014	- AUD	- AUD	- AUD	(896.88) AUD	- AUD	- AUD	- AUD	- AUD	- AUD
4	04/2013	02/2014	- AUD	- AUD	- AUD	- AUD	- AUD	- AUD	- AUD	- AUD	- AUD
5	09/2011	04/2014	- AUD	- AUD	- AUD	- AUD	- AUD	- AUD	464.37 AUD	- AUD	- AUD
6	02/2009	06/2014	- AUD	- AUD	- AUD	- AUD	- AUD	- AUD	- AUD	- AUD	- AUD
7	09/2010	06/2014	- AUD	- AUD	- AUD	- AUD	- AUD	- AUD	- AUD	- AUD	- AUD
8	07/2011	06/2014	- AUD	- AUD	- AUD	- AUD	- AUD	- AUD	- AUD	- AUD	- AUD
9	08/2013	06/2014	- AUD	- AUD	- AUD	- AUD	- AUD	- AUD	- AUD	- AUD	- AUD
10	12/2010	07/2014	- AUD	- AUD	- AUD	- AUD	- AUD	- AUD	- AUD	- AUD	- AUD
11	01/2011	07/2014	- AUD	- AUD	- AUD	- AUD	- AUD	- AUD	- AUD	- AUD	- AUD
12	06/2011	07/2014	- AUD	- AUD	- AUD	- AUD	- AUD	- AUD	- AUD	- AUD	- AUD
13	08/2011	07/2014	- AUD	- AUD	- AUD	- AUD	- AUD	- AUD	- AUD	- AUD	587.06 AUD
14	10/2011	07/2014	- AUD	- AUD	- AUD	- AUD	- AUD	- AUD	- AUD	- AUD	(3,025.00) AUD
15	09/2012	07/2014	- AUD	- AUD	- AUD	- AUD	- AUD	- AUD	- AUD	- AUD	- AUD
16	02/2013	07/2014	- AUD	- AUD	- AUD	- AUD	- AUD	- AUD	- AUD	- AUD	- AUD
17	05/2009	08/2014	- AUD	- AUD	- AUD	- AUD	- AUD	- AUD	- AUD	- AUD	- AUD
18	03/2010	08/2014	- AUD	- AUD	- AUD	- AUD	- AUD	- AUD	- AUD	- AUD	- AUD
19	04/2011	08/2014	- AUD	- AUD	- AUD	- AUD	- AUD	- AUD	- AUD	- AUD	- AUD
20	07/2013	08/2014	- AUD	- AUD	- AUD	- AUD	- AUD	- AUD	- AUD	- AUD	- AUD
21	06/2011	09/2014	- AUD	- AUD	- AUD	- AUD	- AUD	- AUD	- AUD	- AUD	- AUD
22	12/2011	09/2014	- AUD	- AUD	- AUD	- AUD	- AUD	- AUD	- AUD	- AUD	- AUD
23	03/2013	09/2014	- AUD	- AUD	- AUD	- AUD	- AUD	- AUD	- AUD	- AUD	- AUD
24	06/2009	10/2014	- AUD	- AUD	- AUD	- AUD	- AUD	- AUD	- AUD	- AUD	- AUD
25	07/2010	10/2014	- AUD	- AUD	- AUD	- AUD	- AUD	- AUD	- AUD	- AUD	- AUD
26	10/2012	10/2014	- AUD	- AUD	- AUD	- AUD	- AUD	- AUD	- AUD	- AUD	- AUD
<b>Total</b>	<b>26</b>		- AUD	- AUD	- AUD	1,386.92 AUD	- AUD	- AUD	464.37 AUD	- AUD	(2,437.94) AUD

Contract Level Data - Net Salvage Recove

No.	Month / Year of Origination	Month / Year of Net Salvage	Aug-14	Sep-14	Oct-14	Nov-14	Dec-14	Jan-15	Feb-15	Mar-15	Apr-15
1	03/2013	01/2014	- AUD	- AUD	- AUD	- AUD	- AUD	- AUD	- AUD	- AUD	- AUD
2	08/2013	01/2014	- AUD	- AUD	- AUD	- AUD	- AUD	- AUD	- AUD	- AUD	- AUD
3	01/2012	02/2014	- AUD	- AUD	- AUD	- AUD	- AUD	- AUD	- AUD	- AUD	- AUD
4	04/2013	02/2014	- AUD	- AUD	- AUD	- AUD	- AUD	- AUD	- AUD	- AUD	- AUD
5	09/2011	04/2014	- AUD	- AUD	- AUD	- AUD	- AUD	- AUD	- AUD	- AUD	- AUD
6	02/2009	06/2014	- AUD	- AUD	- AUD	- AUD	- AUD	- AUD	- AUD	- AUD	- AUD
7	09/2010	06/2014	- AUD	- AUD	- AUD	- AUD	- AUD	- AUD	- AUD	- AUD	- AUD
8	07/2011	06/2014	- AUD	- AUD	- AUD	- AUD	- AUD	- AUD	- AUD	- AUD	- AUD
9	08/2013	06/2014	- AUD	- AUD	- AUD	- AUD	- AUD	- AUD	- AUD	- AUD	- AUD
10	12/2010	07/2014	- AUD	- AUD	- AUD	- AUD	- AUD	- AUD	- AUD	- AUD	- AUD
11	01/2011	07/2014	- AUD	- AUD	- AUD	- AUD	- AUD	- AUD	- AUD	- AUD	- AUD
12	06/2011	07/2014	- AUD	- AUD	- AUD	- AUD	- AUD	- AUD	- AUD	- AUD	- AUD
13	08/2011	07/2014	- AUD	- AUD	- AUD	- AUD	- AUD	- AUD	- AUD	- AUD	- AUD
14	10/2011	07/2014	- AUD	21,241.50 AUD	- AUD	- AUD	- AUD	- AUD	- AUD	- AUD	- AUD
15	09/2012	07/2014	- AUD	- AUD	- AUD	- AUD	- AUD	- AUD	- AUD	- AUD	- AUD
16	02/2013	07/2014	- AUD	- AUD	- AUD	- AUD	- AUD	- AUD	- AUD	- AUD	- AUD
17	05/2009	08/2014	- AUD	- AUD	- AUD	- AUD	- AUD	- AUD	- AUD	- AUD	- AUD
18	03/2010	08/2014	- AUD	351.36 AUD	- AUD	- AUD	- AUD	- AUD	- AUD	- AUD	- AUD
19	04/2011	08/2014	- AUD	- AUD	- AUD	- AUD	- AUD	- AUD	- AUD	- AUD	- AUD
20	07/2013	08/2014	- AUD	- AUD	- AUD	- AUD	- AUD	- AUD	- AUD	- AUD	- AUD
21	06/2011	09/2014	- AUD	- AUD	- AUD	- AUD	- AUD	- AUD	- AUD	- AUD	- AUD
22	12/2011	09/2014	- AUD	- AUD	509.22 AUD	- AUD	- AUD	- AUD	- AUD	- AUD	- AUD
23	03/2013	09/2014	- AUD	- AUD	- AUD	- AUD	- AUD	- AUD	- AUD	- AUD	- AUD
24	06/2009	10/2014	- AUD	- AUD	- AUD	- AUD	- AUD	- AUD	- AUD	- AUD	- AUD
25	07/2010	10/2014	- AUD	- AUD	- AUD	- AUD	- AUD	- AUD	- AUD	- AUD	- AUD
26	10/2012	10/2014	- AUD	- AUD	- AUD	- AUD	- AUD	- AUD	- AUD	- AUD	- AUD
<b>Total</b>	<b>26</b>		- AUD	21,592.86 AUD	509.22 AUD	- AUD	- AUD	- AUD	- AUD	- AUD	- AUD

Contract Level Data - Net Salvage Recove

No.	Month / Year of Origination	Month / Year of Net Salvage	May-15	Jun-15	Jul-15	Aug-15	Sep-15	Oct-15	Nov-15	Dec-15	Jan-16
1	03/2013	01/2014	- AUD	- AUD	- AUD	- AUD	- AUD	- AUD	- AUD	- AUD	- AUD
2	08/2013	01/2014	- AUD	- AUD	- AUD	- AUD	- AUD	- AUD	- AUD	- AUD	- AUD
3	01/2012	02/2014	- AUD	- AUD	- AUD	- AUD	- AUD	- AUD	- AUD	- AUD	- AUD
4	04/2013	02/2014	- AUD	- AUD	- AUD	- AUD	- AUD	- AUD	- AUD	- AUD	- AUD
5	09/2011	04/2014	- AUD	- AUD	- AUD	- AUD	- AUD	- AUD	- AUD	- AUD	- AUD
6	02/2009	06/2014	- AUD	- AUD	- AUD	- AUD	- AUD	- AUD	- AUD	- AUD	- AUD
7	09/2010	06/2014	- AUD	- AUD	- AUD	- AUD	- AUD	- AUD	- AUD	- AUD	- AUD
8	07/2011	06/2014	- AUD	- AUD	- AUD	- AUD	- AUD	- AUD	- AUD	- AUD	- AUD
9	08/2013	06/2014	- AUD	- AUD	- AUD	- AUD	- AUD	- AUD	- AUD	- AUD	- AUD
10	12/2010	07/2014	- AUD	- AUD	- AUD	- AUD	- AUD	- AUD	- AUD	- AUD	- AUD
11	01/2011	07/2014	- AUD	- AUD	- AUD	- AUD	- AUD	- AUD	- AUD	- AUD	- AUD
12	06/2011	07/2014	- AUD	- AUD	- AUD	- AUD	- AUD	- AUD	- AUD	- AUD	- AUD
13	08/2011	07/2014	- AUD	- AUD	- AUD	- AUD	- AUD	- AUD	- AUD	- AUD	- AUD
14	10/2011	07/2014	- AUD	- AUD	- AUD	- AUD	- AUD	- AUD	- AUD	- AUD	- AUD
15	09/2012	07/2014	- AUD	- AUD	- AUD	- AUD	- AUD	- AUD	- AUD	- AUD	- AUD
16	02/2013	07/2014	- AUD	- AUD	- AUD	- AUD	- AUD	- AUD	- AUD	- AUD	- AUD
17	05/2009	08/2014	- AUD	- AUD	- AUD	- AUD	- AUD	- AUD	- AUD	- AUD	- AUD
18	03/2010	08/2014	- AUD	- AUD	- AUD	- AUD	- AUD	- AUD	- AUD	- AUD	- AUD
19	04/2011	08/2014	- AUD	- AUD	- AUD	- AUD	- AUD	- AUD	- AUD	- AUD	- AUD
20	07/2013	08/2014	- AUD	- AUD	- AUD	- AUD	- AUD	- AUD	- AUD	- AUD	- AUD
21	06/2011	09/2014	- AUD	- AUD	- AUD	- AUD	- AUD	- AUD	- AUD	- AUD	- AUD
22	12/2011	09/2014	- AUD	- AUD	- AUD	- AUD	- AUD	- AUD	- AUD	- AUD	- AUD
23	03/2013	09/2014	- AUD	- AUD	- AUD	- AUD	- AUD	- AUD	- AUD	- AUD	- AUD
24	06/2009	10/2014	- AUD	- AUD	- AUD	- AUD	- AUD	- AUD	- AUD	- AUD	- AUD
25	07/2010	10/2014	- AUD	- AUD	- AUD	- AUD	- AUD	- AUD	- AUD	- AUD	- AUD
26	10/2012	10/2014	- AUD	- AUD	- AUD	- AUD	- AUD	- AUD	- AUD	- AUD	- AUD
<b>Total</b>	<b>26</b>		- AUD	- AUD	- AUD	- AUD	- AUD	- AUD	- AUD	- AUD	- AUD

**Contract Level Data - Net Salvage Recove**

No.	Month / Year of Origination	Month / Year of Net Salvage	Feb-16	Mar-16	Apr-16	May-16	Jun-16	Jul-16	Aug-16	Sep-16	Oct-16
1	03/2013	01/2014	- AUD	- AUD	- AUD	- AUD	- AUD	- AUD	- AUD	- AUD	- AUD
2	08/2013	01/2014	- AUD	- AUD	- AUD	- AUD	- AUD	- AUD	- AUD	- AUD	- AUD
3	01/2012	02/2014	- AUD	- AUD	- AUD	- AUD	- AUD	- AUD	- AUD	- AUD	- AUD
4	04/2013	02/2014	- AUD	- AUD	- AUD	- AUD	- AUD	- AUD	- AUD	- AUD	- AUD
5	09/2011	04/2014	- AUD	- AUD	- AUD	- AUD	- AUD	- AUD	- AUD	- AUD	- AUD
6	02/2009	06/2014	- AUD	- AUD	- AUD	- AUD	- AUD	- AUD	- AUD	- AUD	- AUD
7	09/2010	06/2014	- AUD	- AUD	- AUD	- AUD	- AUD	- AUD	- AUD	- AUD	- AUD
8	07/2011	06/2014	- AUD	- AUD	- AUD	- AUD	- AUD	- AUD	- AUD	- AUD	- AUD
9	08/2013	06/2014	- AUD	- AUD	- AUD	- AUD	- AUD	- AUD	- AUD	- AUD	- AUD
10	12/2010	07/2014	- AUD	- AUD	- AUD	- AUD	- AUD	- AUD	- AUD	- AUD	- AUD
11	01/2011	07/2014	- AUD	- AUD	- AUD	- AUD	- AUD	- AUD	- AUD	- AUD	- AUD
12	06/2011	07/2014	- AUD	- AUD	- AUD	- AUD	- AUD	- AUD	- AUD	- AUD	- AUD
13	08/2011	07/2014	- AUD	- AUD	- AUD	- AUD	- AUD	- AUD	- AUD	- AUD	- AUD
14	10/2011	07/2014	- AUD	- AUD	- AUD	- AUD	- AUD	- AUD	- AUD	- AUD	- AUD
15	09/2012	07/2014	- AUD	- AUD	- AUD	- AUD	- AUD	- AUD	- AUD	- AUD	- AUD
16	02/2013	07/2014	- AUD	- AUD	- AUD	- AUD	- AUD	- AUD	- AUD	- AUD	- AUD
17	05/2009	08/2014	- AUD	- AUD	- AUD	- AUD	- AUD	- AUD	- AUD	- AUD	- AUD
18	03/2010	08/2014	- AUD	- AUD	- AUD	- AUD	- AUD	- AUD	- AUD	- AUD	- AUD
19	04/2011	08/2014	- AUD	- AUD	- AUD	- AUD	- AUD	- AUD	- AUD	- AUD	- AUD
20	07/2013	08/2014	- AUD	- AUD	- AUD	- AUD	- AUD	- AUD	- AUD	- AUD	- AUD
21	06/2011	09/2014	- AUD	- AUD	- AUD	- AUD	- AUD	- AUD	- AUD	- AUD	- AUD
22	12/2011	09/2014	- AUD	- AUD	- AUD	- AUD	- AUD	- AUD	- AUD	- AUD	- AUD
23	03/2013	09/2014	- AUD	- AUD	- AUD	- AUD	- AUD	- AUD	- AUD	- AUD	- AUD
24	06/2009	10/2014	- AUD	- AUD	- AUD	- AUD	- AUD	- AUD	- AUD	- AUD	- AUD
25	07/2010	10/2014	- AUD	- AUD	- AUD	- AUD	- AUD	- AUD	- AUD	- AUD	- AUD
26	10/2012	10/2014	- AUD	- AUD	- AUD	- AUD	- AUD	- AUD	- AUD	- AUD	- AUD
<b>Total</b>	<b>26</b>		- AUD	- AUD	- AUD	- AUD	- AUD	- AUD	- AUD	- AUD	- AUD

**Contract Level Data - Net Salvage Recove**

No.	Month / Year of Origination	Month / Year of Net Salvage	Nov-16	Dec-16	Jan-17	Feb-17
1	03/2013	01/2014	- AUD	- AUD	- AUD	- AUD
2	08/2013	01/2014	- AUD	- AUD	- AUD	- AUD
3	01/2012	02/2014	- AUD	- AUD	- AUD	- AUD
4	04/2013	02/2014	- AUD	- AUD	- AUD	- AUD
5	09/2011	04/2014	- AUD	- AUD	- AUD	- AUD
6	02/2009	06/2014	- AUD	- AUD	- AUD	- AUD
7	09/2010	06/2014	- AUD	- AUD	- AUD	- AUD
8	07/2011	06/2014	- AUD	- AUD	- AUD	- AUD
9	08/2013	06/2014	- AUD	- AUD	- AUD	- AUD
10	12/2010	07/2014	- AUD	- AUD	- AUD	- AUD
11	01/2011	07/2014	- AUD	- AUD	- AUD	- AUD
12	06/2011	07/2014	- AUD	- AUD	- AUD	- AUD
13	08/2011	07/2014	- AUD	- AUD	- AUD	- AUD
14	10/2011	07/2014	- AUD	- AUD	- AUD	- AUD
15	09/2012	07/2014	- AUD	- AUD	- AUD	- AUD
16	02/2013	07/2014	- AUD	- AUD	- AUD	- AUD
17	05/2009	08/2014	- AUD	- AUD	- AUD	- AUD
18	03/2010	08/2014	- AUD	- AUD	- AUD	- AUD
19	04/2011	08/2014	- AUD	- AUD	- AUD	- AUD
20	07/2013	08/2014	- AUD	- AUD	- AUD	- AUD
21	06/2011	09/2014	- AUD	- AUD	- AUD	- AUD
22	12/2011	09/2014	- AUD	- AUD	- AUD	- AUD
23	03/2013	09/2014	- AUD	- AUD	- AUD	- AUD
24	06/2009	10/2014	- AUD	- AUD	- AUD	- AUD
25	07/2010	10/2014	- AUD	- AUD	- AUD	- AUD
26	10/2012	10/2014	- AUD	- AUD	- AUD	- AUD
<b>Total</b>	<b>26</b>		- AUD	- AUD	- AUD	- AUD