



**Heron Resources**  
Limited



**TriAusMin**

## **Creation of a Well-Capitalised Lachlan Fold Belt Focused Base and Precious Metals Company**

**Merger Presentation**

August 2014

Diggers & Dealers, Kalgoorlie

# Forward Looking and Compliance Statements

## TriAusMin Limited

- The information contained in this presentation has been prepared using the information available to TriAusMin at the time of preparation. This presentation also contains forward-looking statements that were based on expectations, estimates, projections and extrapolations as of the date of this presentation. Any forward-looking statement is subject to known and unknown factors which may cause actual results and developments to materially differ from those expressed by, or implied by the forward-looking statements in this presentation.
- External or other factors may have impacted on the business of TriAusMin and the content of this presentation since its preparation. TriAusMin does not undertake to update any forward-looking statements that are contained in this presentation, except in accordance with applicable securities laws. In addition, this presentation may not include all relevant information regarding TriAusMin. TriAusMin has taken all reasonable care in preparation of this presentation. However, the content of this presentation should not be relied upon in relation to any further action including investment in TriAusMin. Any person considering an investment in TriAusMin is advised to obtain independent financial advice prior to making an investment decision.
- Nothing in this presentation should be construed as to constitute an offer, invitation or recommendation to subscribe for, sell or purchase any security in any jurisdiction.
- Further information about TriAusMin is available at: [www.triausmin.com](http://www.triausmin.com)
- Competent Person/Qualified Person
- (a) The technical information in this news release relating to the exploration results at the Woodlawn Project is based on information compiled by Mr Rod Arnold, who is a Member of the Australasian Institute of Geoscientists. Mr Arnold is a full time employee of TriAusMin Limited and has sufficient experience, which is relevant to the style of mineralization and type of deposit under consideration and to the activity which he is undertaking to qualify as a Competent Person as defined in the 2004 edition of the "Australasian Code for Reporting of Exploration Results and "qualified person" as this term is defined in Canadian National Instrument 43-101 ("NI 43-101"). Mr Arnold consents to the inclusion in this news release of the information in the form and context in which it appears.
- (b) The technical information in this news release relating to the Woodlawn Mineral Resources is based on information compiled by Mr Robin Rankin, who is a Member of The Australasian Institute of Mining and Metallurgy (AusIMM) and accredited by the AusIMM since 2000 as a Chartered Professional (CP) in the geology discipline. Mr Rankin consultants to TriAusMin Limited as Principal Consulting Geologist of independent geological consultancy GeoRes. He has sufficient experience, which is relevant to the style of mineralization and type of deposit under consideration and to the activity which he is undertaking to qualify as a Competent Person as defined in the 2004 edition of the "Australasian Code for Reporting of Exploration Results and "qualified person" as this term is defined in Canadian National Instrument 43-101 ("NI 43-101"). Mr Rankin consents to the inclusion in this news release of the information in the form and context in which it appears.
- (c) The information in this release that relates to Ore Reserves associated with the Woodlawn Retreatment Project is based on information compiled by qualified person, Mr Richard Lambert, P.E. a professional engineer and Registered Member of SME. Mr Richard Lambert is Principal Mining Engineer and Executive Vice President of Roscoe Postle Associates, Inc. He is independent of TriAusMin applying the test set out in Section 1.4 of NI 43-101. He has sufficient experience relevant to the style of mineralization and type of deposit under consideration, and to the activity which he is undertaking, to qualify as a Competent Person as defined in the 2004 Edition of the 'Australasian Code for Reporting of Exploration Results, Mineral Resources and Ore Reserves' (the JORC Code) and by reason of his education, affiliation with a professional association (as defined in NI 43-101) and past relevant work experience, fulfils the requirements to be a "qualified person" for the purposes of NI 43-101.

## Heron Resources Limited

- The material used in this presentation is intended to be a summary of selected geological data, current and proposed activities, as well as resource estimates based on information available to Heron Resources at the time. It does not include all available information and should not be used in isolation as a basis to invest in Heron Resources. Any potential investor should refer to Heron Resources' ASX releases and statutory reports before considering investing in the Company.
- This presentation includes information relating to a completed independent scoping study, completed independent resource estimate and a completed pre-feasibility study and includes "forward looking statements" which include, without limitation, estimates of potential nickel in concentrate production based on mineral resources and flow-sheets that are currently being evaluated. While the Company has a reasonable basis on which to express these estimates, any forward looking statement is subject to risk. Risks include, without limitation: nickel metal prices, foreign exchange rate movements, failure to meet project milestones, project funding capacity, concentrate off-take contracts and estimates of future capital and operating costs.
- The Company does not undertake to release publicly any revisions to forward looking statements included in this presentation to reflect events or results after the date of this presentation, except as may be required under applicable securities laws.
- The information in this presentation that is related to Exploration is based on information compiled by David von Perger who is a member of Australian Institute of Mining and Metallurgy. David von Perger is a full time employee of Heron Resources Limited. David von Perger has sufficient experience that is relevant to the style of mineralisation and type of deposit under consideration, and to the exploration activity being undertaking to qualify as Competent Person as defined in the 2012 Edition of the "Australasian Code for Reporting of Exploration Results, Mineral Resources and Ore Reserves". David von Perger consents to the inclusion in this presentation of the matters based on his information in the form and context that it appears.
- Refer Heron Resources Limited 2013 Annual Report, page 62, Section 8.0, "Statement of Mineral Resources" and accompanying Attribution Statement. The information in this presentation that is related to Resources is based on information compiled by Steve Jones who is a member of Australian Institute of Mining and Metallurgy. Steve Jones is a full time employee of Heron Resources Limited. Steve Jones has sufficient experience that is relevant to the style of mineralisation and type of deposit under consideration, and to the exploration activity being undertaking to qualify as Competent Person as defined in the 2012 Edition of the "Australasian Code for Reporting of Exploration Results, Mineral Resources and Ore Reserves". Steve Jones consents to the inclusion in this presentation of the matters based on his information in the form and context that it appears.
- Nothing in this presentation should be construed as to constitute an offer, invitation or recommendation to subscribe for, sell or purchase any security in any jurisdiction and neither this presentation or anything contained in it will form the basis of any contract or commitment.
- No representation or warranty, express or implied, is made as to the fairness, accuracy, completeness or correctness of the information, opinions and conclusions contained in this presentation. To the maximum extent permitted by law, none of Heron, its directors, employees or agents, or any other person accepts any liability, including, without limitation, any liability arising out of fault of negligence, for any loss arising from the use of the information contained in this presentation. In particular, no representation or warranty, express or implied is given as to the accuracy, completeness or correctness, likelihood of achievement or reasonableness or any forecasts, prospects or returns contained in this presentation nor is any obligation assumed to update such information. Such forecasts, prospects or returns are by their nature subject to significant uncertainties and contingencies.



# Forward Looking and Compliance Statements (JORC 2012)

## Heron Resources Limited – Kalgoorlie Nickel Project

- The information in this report that relates to Mineral Resources for the Highway, Goongarrie Hill, Goongarrie South, Big Four, Aubills and Boyce Creek Prospects is based on information originally compiled by a former Heron Resources Limited resource geologist and validated by Steve Jones a Heron employee in 2013. Both are Members of the Australasian Institute of Mining and Metallurgy. Steve Jones is a full time employee of Heron Resources Limited and has sufficient experience that is relevant to the style of mineralization and type of deposit under consideration and to the resource estimation activity that he is undertaking to qualify as a Competent Person as defined in the 2012 Edition of the 'Australasian Code for Reporting of Exploration Results, Mineral Resources and Ore Reserves'. Steve Jones consents to the inclusion in this report of the matters based on his information in the form and context that it appears. Note that Mineral Resources that are not Ore Reserves do not have demonstrated viability.
- The information in this report that relates to Mineral Resources for the Siberia North, Bulong East, Siberia, Black Range, Taurus and Jump Up Dam Prospects is based on information compiled by Snowden Mining Industry Consultants by members of the Australian Institute of Mining and Metallurgy. Snowden Mining Industry Consultants had sufficient experience that is relevant to the style of mineralization and type of deposit under consideration and to the resource estimation activity. All resources were internally audited by Snowden and signed off by a person of sufficient experience to qualify as a Competent Person as defined in the 2012 Edition of the 'Australasian Code for Reporting of Exploration Results, Mineral Resources and Ore Reserves' and reviewed by Steve Jones in 2013. Steve Jones a full time employee of Heron Resources Limited validated the Snowden Mining Siberia North estimate in 2013. Note that Mineral Resources that are not Ore Reserves do not have demonstrated viability.
- The information in this report that relates to exploration and resource data (including drilling data, database quality, geological interpretation and density modelling) is based on information originally compiled by previous full time employees of Heron Resources Limited and Steve Jones. Steve Jones is currently a full time employee of Heron Resources Limited and has sufficient experience that is relevant to the style of mineralization and type of deposit under consideration and to the exploration activities undertaken to qualify as a Competent Person as defined in the 2012 Edition of the "Australasian Code for Reporting of Exploration Results, Mineral Resources and Ore Reserves". Steve Jones has validated the original resource estimates during 2013. Steve Jones consents to the inclusion in this report of the matters based on his information in the form and context that it appears.
- The information in this report that relates to exploration is based on information compiled by Ian Buchhorn who is a Member of the Australasian Institute of Mining and Metallurgy. Ian Buchhorn is a full time employee of Heron Resources Limited and has sufficient experience that is relevant to mineral economics and the style of mineralization and type of deposit under consideration, and to the exploration activity that is being undertaken to qualify as a Competent Person as defined in the 2012 Edition of the "Australasian Code for Reporting of Exploration Results, Exploration Targets, Mineral Resources and Ore Reserves". Ian Buchhorn has consented to the inclusion in this report of the matters based on his information in the form and context that it appears.
- For previously reported (by Heron) Prefeasibility Studies (Slide 18, 27 in this presentation):
- Information is extracted from the announcement entitled "Vale Delivers Strong KNP Pre-Feasibility Report" released on 9 February 2009 and from the announcement entitled "Completion of Kalgoorlie Nickel Project PFS Revision" released on 16 February 2010 which are available at [www.heronresources.com.au](http://www.heronresources.com.au). The Company confirms that it is not aware of any new information or data that materially affects the information included in the original market announcement and, in the case of estimates of Mineral Resources or Ore Reserves, that all material assumptions and technical parameters underpinning the estimates in the relevant market announcement continue to apply and have not materially changed. The Company confirms that the form and context in which the Competent Person's findings are presented have not been materially modified from the original market announcement.
- It should be noted (as it was noted in the originally reported Pre-Feasibility Study) that there is a low level of geological confidence associated with Inferred Mineral Resources and there is no certainty that further exploration work will result in the determination of Indicated Mineral Resource or that the production target itself will be realized.
- For previously reported (by Heron) Scoping Study (Slide 18 in this presentation):
- Information is extracted from the announcement entitled "Simulus Scoping Study results - Step Change for KNP" released on 8 April 2014 and from the announcement entitled "Simulus Scoping Study Clarification" released on 22 April 2014 which is available at [www.heronresources.com.au](http://www.heronresources.com.au). The Company confirms that it is not aware of any new information or data that materially affects the information included in the original market announcement and, in the case of estimates of Mineral Resources or Ore Reserves, that all material assumptions and technical parameters underpinning the estimates in the relevant market announcement continue to apply and have not materially changed. The Company confirms that the form and context in which the Competent Person's findings are presented have not been materially modified from the original market announcement. The 2014 Simulus Study, with it's focus on lower capital expenditure, supersedes the 2009 and 2010 Pre-feasibility Studies.
- It should be noted that there is a low level of geological confidence associated with Inferred Mineral Resource and there is no certainty that further exploration work will result in the determination of Indicated Mineral Resources or that the production target itself will be realized.

# Merger Highlights



**Heron Resources**  
Limited



**TriAusMin**

## The Compelling Case –

- **Well Capitalised**
- **High Grade Base Metals at Woodlawn (Reserves WRP, Resources WUP)**
- **Advanced Development Options**
- **Quality Pipeline of Projects in Lachlan Fold Belt (Zn, Cu-Au) & WA (Ni)**
- **Desirable Zinc and Nickel Commodity Exposure**
- **Strong Combined Board and Management**

## The Transaction<sup>1</sup> –

- **Scheme of Arrangement**
- **1 Heron Share for 2.33 TriAusMin Shares (70% HRR : 30% TRO/TOR)**
- **Shareholders Voted 99.9% in Favour**
- **Next Steps - Aug 4 Second Court Date, Aug 5 Effective Date**
- **TSX Listing Retained**

1. Summary only - this presentation should be read in conjunction with the Scheme Booklet, Implementation Agreement and Scheme documentation.

# Substantial Benefits to Shareholders

To Heron's Shareholders:	To TriAusMin's Shareholders:
<ul style="list-style-type: none"><li>✓ Heron's cash → high grade development project</li><li>✓ Feasibility studies active</li><li>✓ Adds additional high quality projects</li><li>✓ Favourable commodity exposure in zinc</li><li>✓ Precisely complements Heron Lachlan Fold Belt assets</li></ul>	<ul style="list-style-type: none"><li>✓ Capital to progress the Woodlawn Underground Project through to BFS</li><li>✓ Capital to further optimise the Woodlawn Tailings Retreatment Project (potential for earlier production)</li><li>✓ Capital to meet new SML20 environmental bond requirements &amp; freehold land acquisition</li></ul>
To all Shareholders:	
<ul style="list-style-type: none"><li>✓ Woodlawn asset revaluation through high grade resource expansion and supporting development studies</li><li>✓ Kalgoorlie Nickel Project provides longer term option value through participation in a potential future spin out or farm in by a joint venture partner</li><li>✓ Pipeline of new projects through combined exploration portfolio – to rationalise to focus on the most prospective targets</li><li>✓ Larger, better funded, more liquid listed company</li><li>✓ Strong shareholder base in both Australia and North America</li></ul>	

# MergeCo Board and Management

## **Craig Readhead**

BJuris, LLB, FAICD  
Non-Executive Chairman

- Lawyer with over 30 years legal and corporate advisory experience with specialization in the resources sector, including the implementation of large scale mining projects. Former president of the Australian Mining and Petroleum Law Association

## **Dr James Gill**

BSc, MSc, PhD  
Non-Executive Deputy-Chairman

- Involved in the mining business for over 40 years with experience in exploration, mine development and operations. Founded Aur Resources Inc. in 1981 and was CEO and President for 26 years until taken over by Teck Resources. Qualifications in economic geology

## **Stephen Dennis**

BCom, BLLB, GDipAppFin, CFTP  
Non-Executive Director

- Actively involved in the mining industry for over 30 years. He has held senior management positions at MIM Holdings Limited, Minara Resources Limited, and Brambles Australia Limited. Current CEO and MD of CBH Resources Limited, the Australian subsidiary of Toho Zinc Co., Ltd of Japan

## **Wayne Taylor**

BEng, MBA, MAusIMM  
Managing Director

- Mining engineer with over 25 years experience. Current MD of TriAusMin. Held senior operating roles with Western Mining Corporation and commercial roles with Glencore

## **Ian Buchhorn**

BSc (Hons), Dip Geosci, MAusIMM  
Executive Director

- Mineral Economist and Geologist with over 30 years experience. Current MD of Heron, and previously worked with Anglo American Corporation in southern Africa, Comalco, Shell/Billiton and Elders Resources in Australia and operated as registered mine manager

## **Heath Sandercock**

BEng (Hons), FAusIMM, MMICA, SME  
General Manager, Woodlawn

- Mining engineer with over 30 years experience in operational and consulting roles. Holds a Mine Managers Certificate of Competency for NSW, Qld & WA

## **David von Perger**

BSc, MAusIMM  
General Manager, Exploration

- Geologist with over 20 years experience in mineral exploration. Experiences in mining operations, project development and assessment of new opportunities. Within Heron has been responsible for the identification and acquisition of several new nickel, gold, iron-ore and base-metal projects

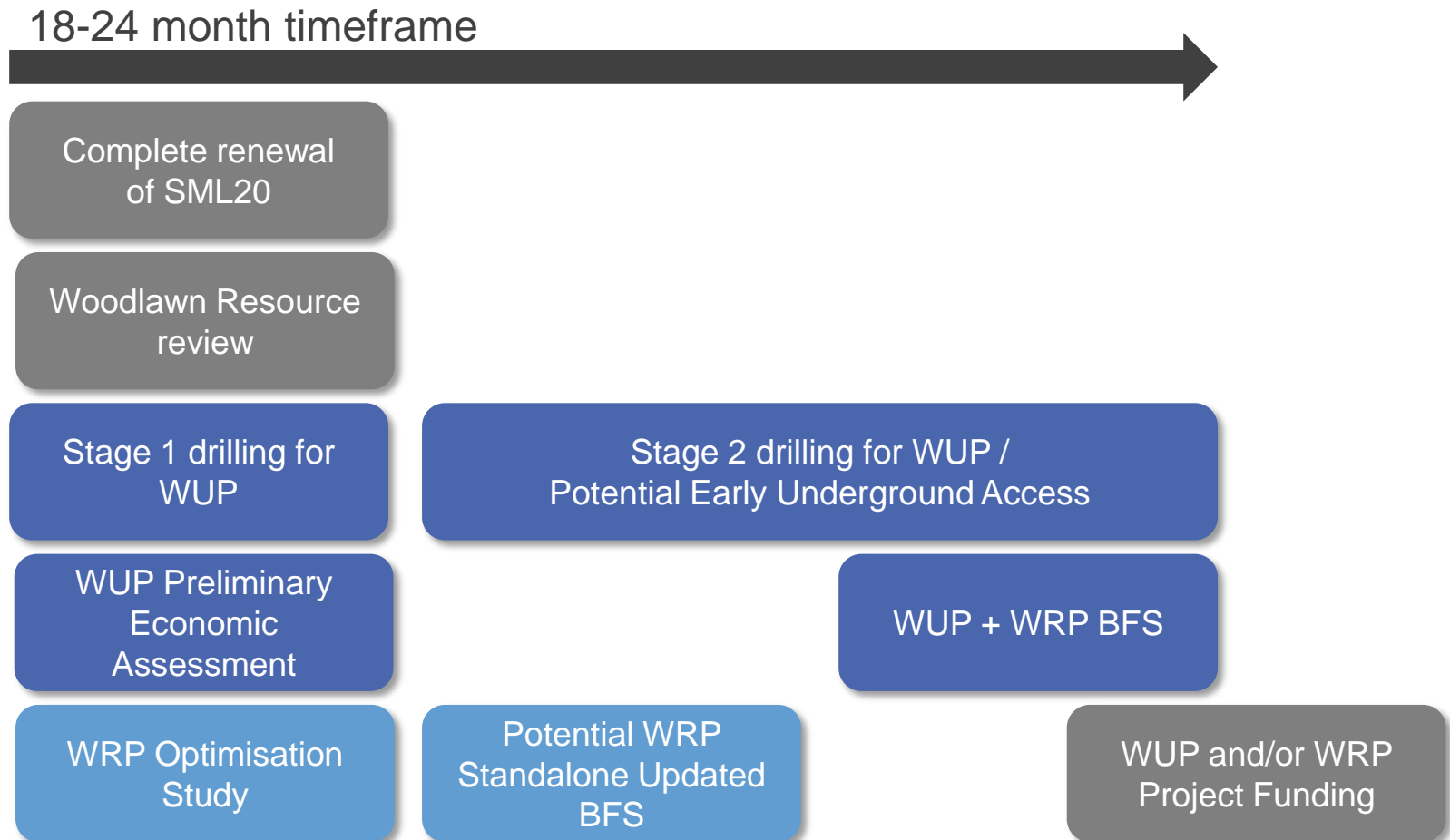
## **Charlie Kempson**

MEng (Oxon), MBA, GAICD  
General Manager, Strategy & BD

- Corporate finance executive most recently a Director of advisor Azure Capital. Over 9 years experience advising across mining, oil & gas and related services on business development, strategy, finance, and M&A. Previously spent 6 years working in investment banking in London.

# MergeCo Strategy for Woodlawn

To deploy a substantial part of Heron's treasury to advance the Woodlawn projects to fast track BFS and a development decision



# Zinc Market – Wood Mackenzie and CRU have zinc as a top selection to outperform over the next few years

## Supply Constraints

Major established operations coming to an end:  
Brunswick, Perseverance – closed  
Century, Skorpion, Lisheen  
New operations – many are deposits with issues:  
Technical risk, high cost base, geographic difficulties, sovereign risk  
Dugald River – development delayed  
>1Mt of current zinc production is cash negative  
(CRU Oct 2013)

## Demand Growth

Growth projection 3.8% pa 2011 to 2021  
→ 12.6Mt to 18.3Mt  
Galvanizing (+50% of Zn demand) increasing with upgraded standards for corrosion protection  
Minor secondary market (<10%) – difficult to recycle requiring new metal to meet demand

**2013 Market Balance – First Annual Deficit Since 2006**  
**Estimated 5Mtpa Supply Deficit by 2020**

## Average Mine Grade Falling

Average. mine head grade dropping:

2000	Zn+Pb	~9.7%	
2010	Zn+Pb	~8.0%	(-18%)
2015	Zn+Pb	~7.5%	(-23%)

(Cu mines forecast to drop by 17% over 2000-2015)

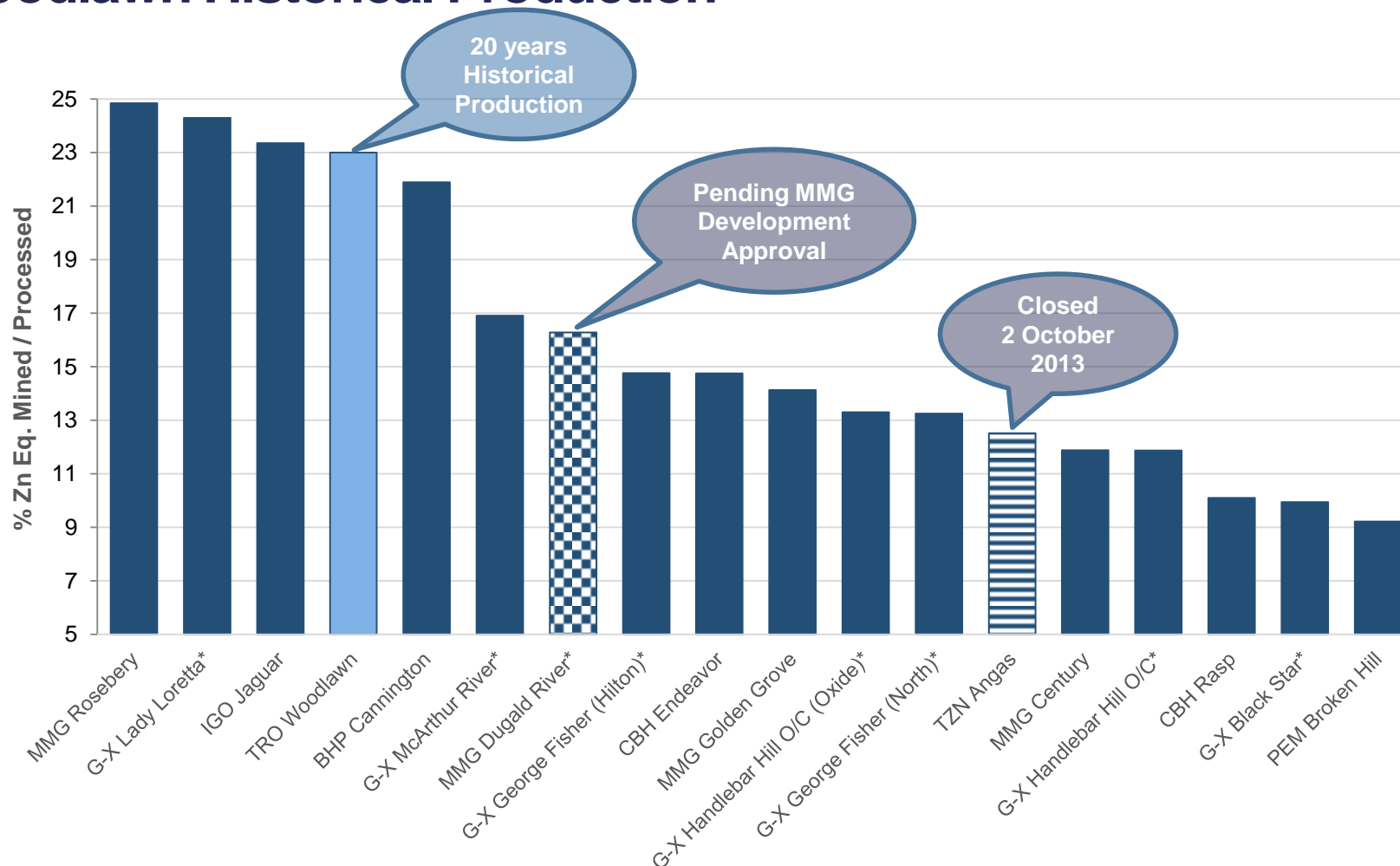
**Woodlawn Zn+Pb ~12.7%** (excl. Cu, Au, Ag)

## China Prod<sup>n</sup> Increasing Cost

**36%** of worlds zinc supply – potential to grow  
But, rising local costs AND revaluation RMB  
→ Est. 7-10%pa rise in USD cost base  
Increasing regulatory environment



# Australian Zinc Production – Current Production Grades vs Woodlawn Historical Production



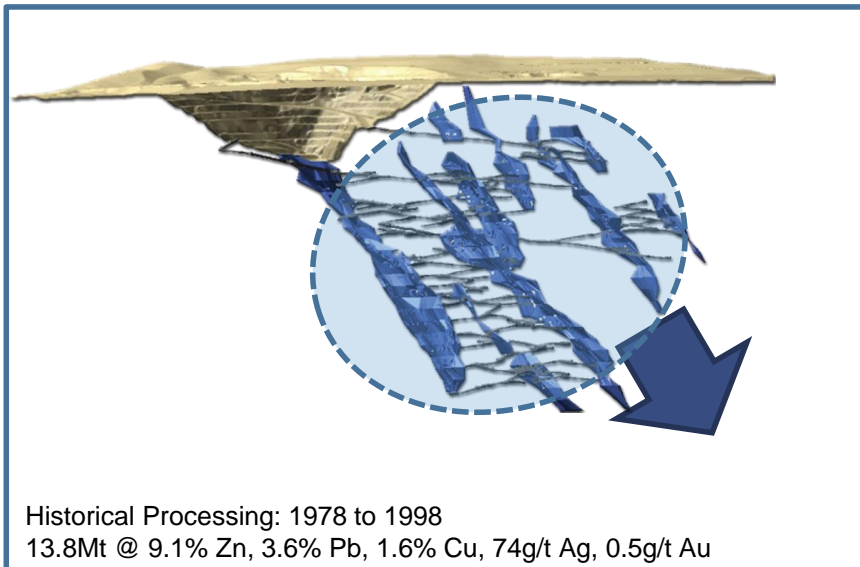
## Notes:

1. Publicly reported production Jul-Dec 2013 unless otherwise noted.
2. CBH mines are estimates, PEM ceased reporting Q3 2013.
3. No allowance for process recoveries or realisation costs in the metal equivalent calculation
4. Commodity spot prices as at 29 October 2013 US\$.
5. % Zn Eq. =  $(\$1933 \times \% \text{Zn} + \$2185 \times \% \text{Pb} + \$7202 \times \% \text{Cu} + \$22.31 \times \text{oz. Ag} + \$1349 \times \text{oz. Au}) / \$1933$   
Information shown is comparative only – Zn Eq. is calculated on the basis of 100% metal recoveries

\* 2013 Ore Reserve Statement

# A Focus on the Woodlawn Project

## High Grade



### Woodlawn Underground Project (WUP)

- Current Measured+Indicated+Inferred Resources<sup>1</sup> of:  
10.1Mt @ 10.2% Zn, 4.0% Pb, 1.8% Cu, 84g/t Ag, 0.6g/t Au
- Demonstrated extensions to high grade lenses
- Discovery of new high grade lenses (2012-13 drilling)

## Development Ready



### Woodlawn Tailings Retreatment Project (WRP)

- Reserves<sup>2</sup> of:  
11.2Mt @ 2.2% Zn, 1.3% Pb, 0.5% Cu, 31g/t Ag, 0.3g/t Au
- BFS & FEED completed
- Opportunities for project optimisation

### Woodlawn Project = WUP + WRP

- Project Approvals Received from NSW DPI
- Established Infrastructure – Road, Power, Water, Labour
- Supportive Community
- Desirable Commodity Exposure – Zinc & Copper
- Development Capital Efficiencies
- Operating Flexibility – Decoupled Production Sources

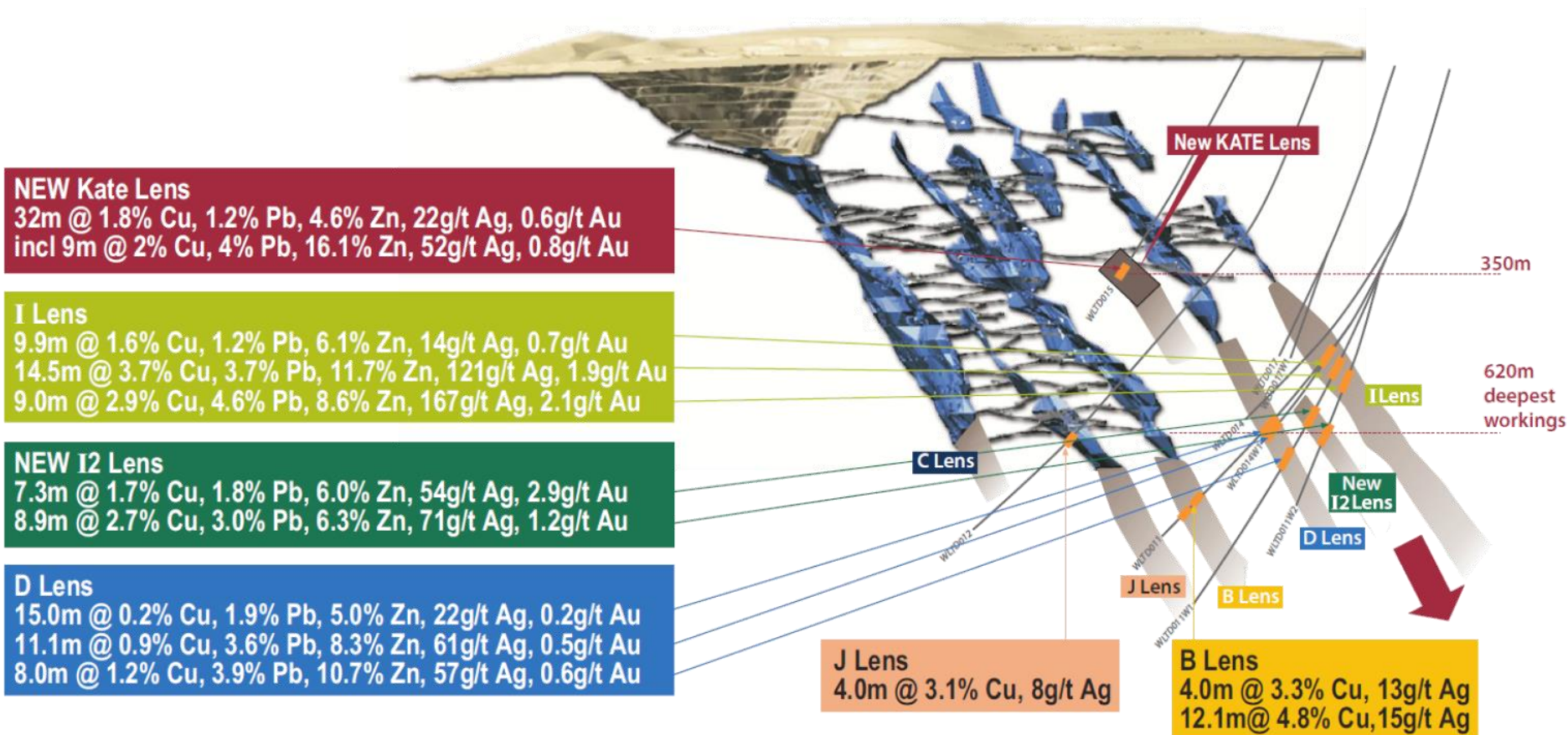
1) JORC 2012. The WUP Resource was disclosed originally in TriAusMin's 29 January 2014 release titled "Restatement of Woodlawn Underground Mineral Resources".

2) JORC 2004. The WRP Reserve is based on information contained within TriAusMin's 22 March 2012 release.

Neither Heron nor TriAusMin is aware of any new information or data that materially affects the information included in the above announcements and all material assumptions and technical parameters continue to apply.

# Woodlawn Underground 2012 & 2013 Drill Results

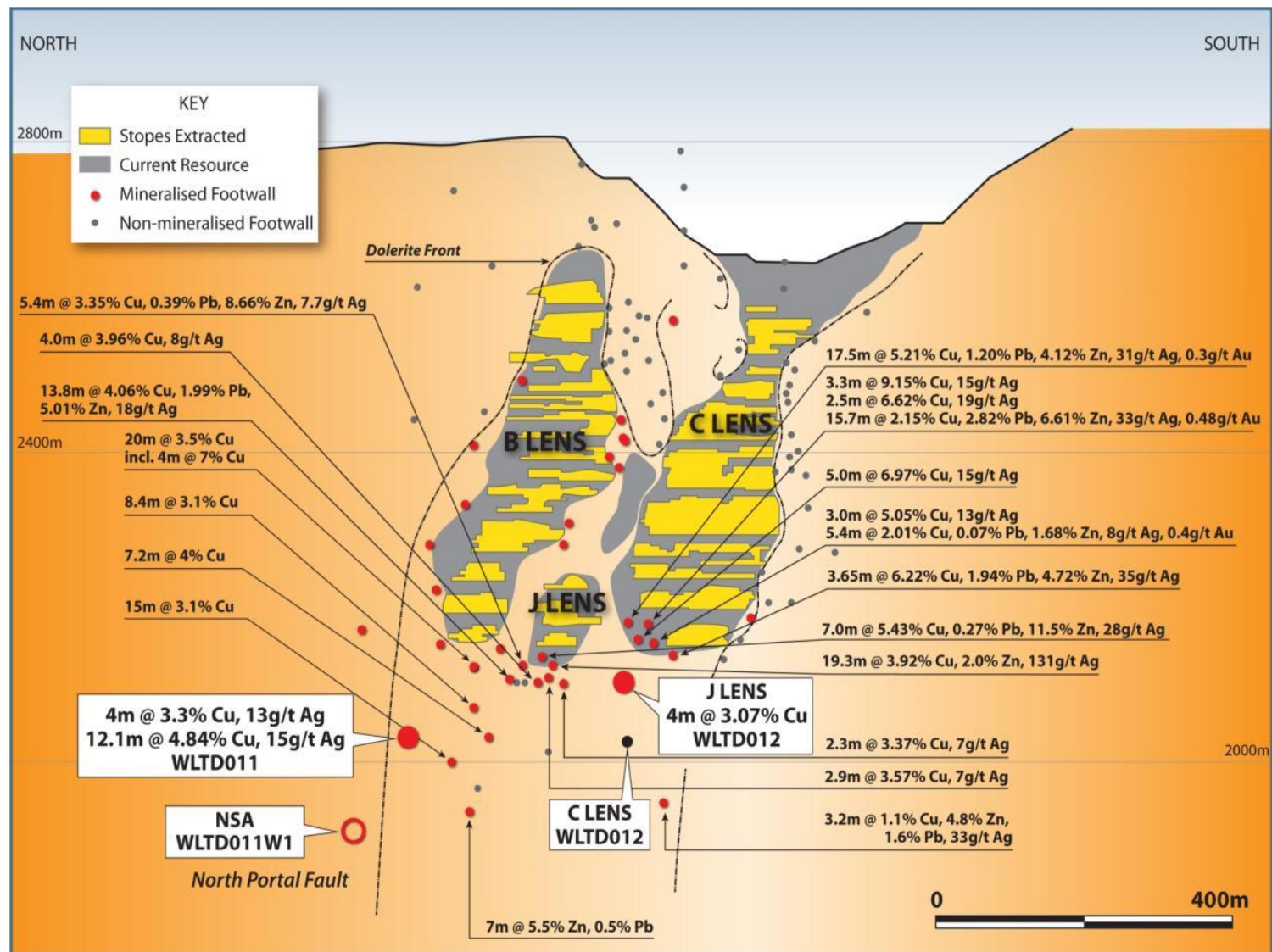
## New High Grade Lenses & Extensions To Existing Lenses



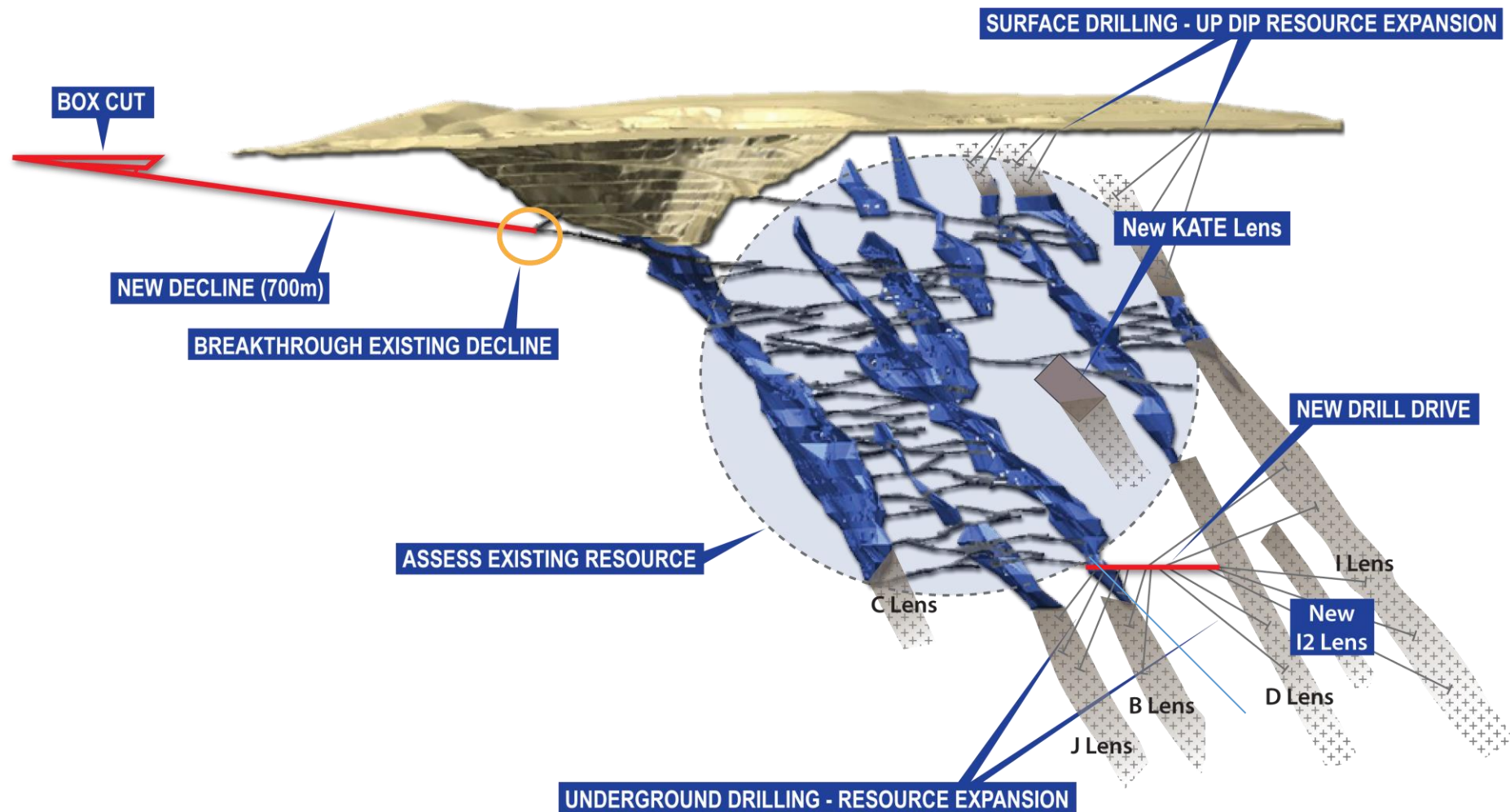
Selected 2012/2013 Intercepts Only



# Long Section B, J, C Lenses



# Woodlawn Underground Mining Project Proposed Feasibility Study & Extension Targets



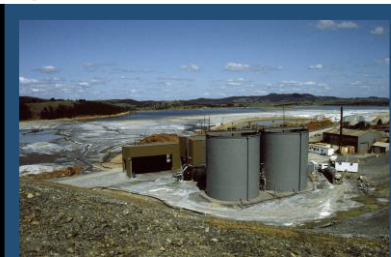
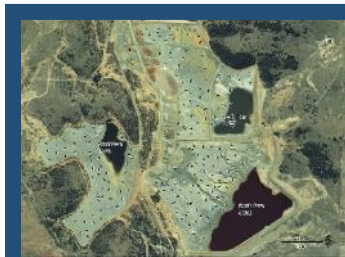


# WRP – Mine Production Overview – Standalone (Business Case March 2012)

Proven & Probable Reserves:	11.2 Mt @ 2.2% Zn, 1.3% Pb, 0.5% Cu, 31 g/t Ag, 0.3 g/t Au	
Projected Mining Rate:	4,300 tonnes per day (1.5Mtpa)	
Mine Life:	7.5 years	
Av. Annual Production:	Cu: 14Ktpa @ 22% Cu	~ 3Ktpa (7Mlbpa)
	Pb: 15Ktpa @ 35% Pb	~ 5Ktpa (12Mlbpa)
	Zn: 49Ktpa @ 45% Zn	~ 22Ktpa (49Mlbpa)
	(tonnes of concentrate)	
	Ag:	~ 470Kozpa
	Au:	~ 1.8Kozpa

Development Capital: A\$92.8 million including a A\$5.6 million contingency

Operating Costs:	<u>Site</u>	A\$22 /t
	Concentrate Haulage & Ship Loading	A\$ 3 /t
	State Royalties	<u>A\$ 1 /t</u>
	TOTAL	A\$26 /t processed

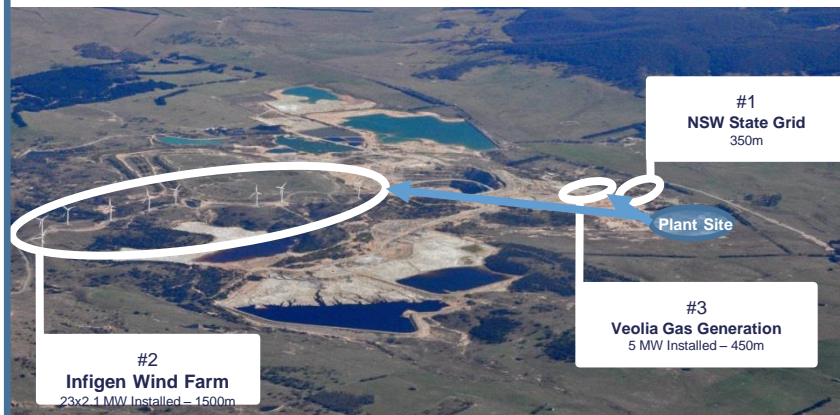


**Positive business case at current commodity prices & potential to optimise**

# Woodlawn – A Step Ahead

Quality of the supporting infrastructure and access to operational resource inputs  
are second to none

## POWER - Options

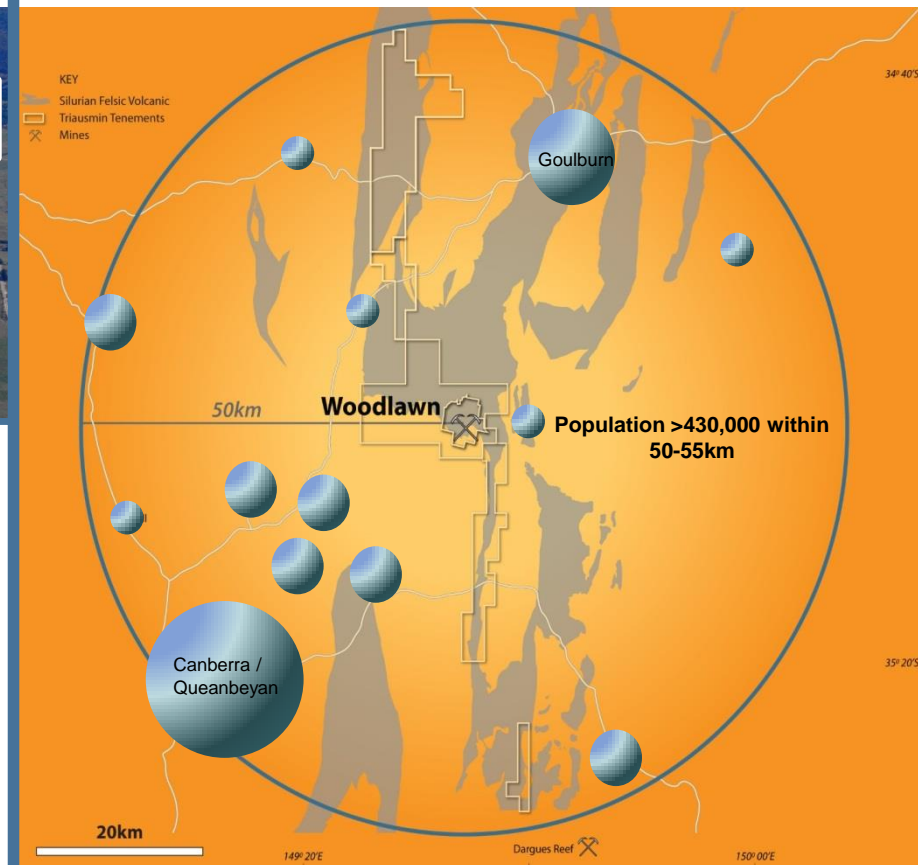


## PORT Access to Market

**#1 Port Kembla**  
211 km by Road (Rail option)  
Underutilised Concentrate Berth  
\$5M Shed Expansion 2013

**#2 Port Botany**  
Alternative to Port Kembla  
239 km by Road (Rail option)  
Container Handling

## PEOPLE - Sourcing a Workforce



# MergeCo Strategy for Other Assets

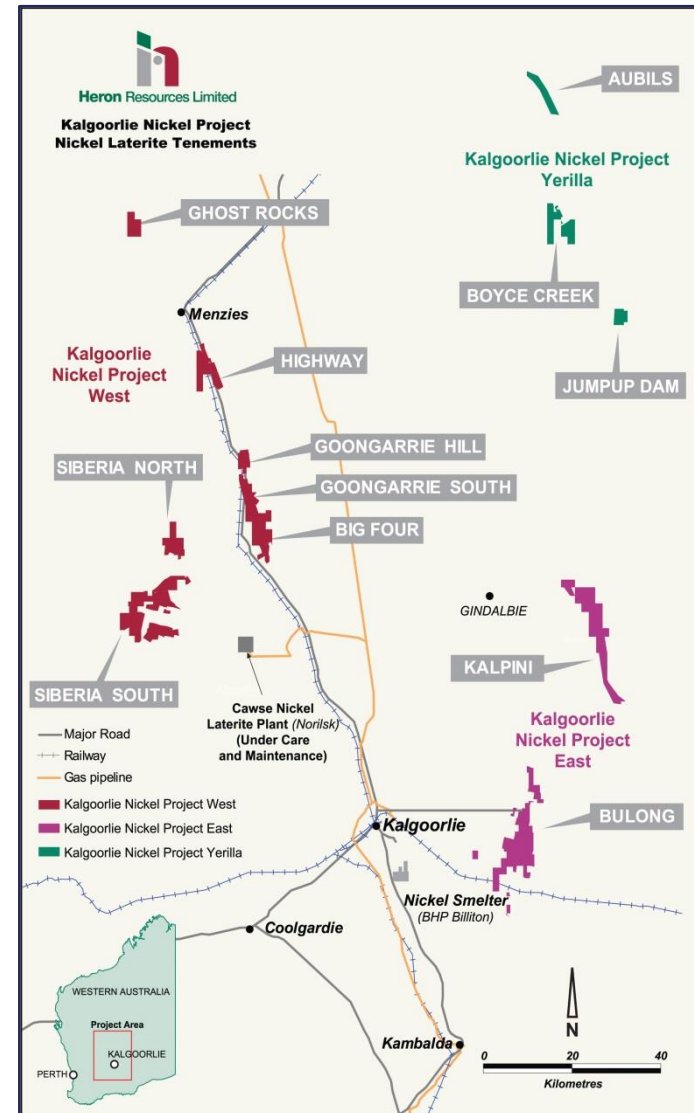
- **Progress low cost KNP project enhancement studies with a view to a potential future spin out or JV**
  - Stimulus 20Ktpa scoping study and engineering work on-going (completion Mar 15)
  - KPMG mandated to coordinate partner search, data room being prepared
  - KNP corporate options include sale, spin-out or joint venture – all of which have the potential to crystalize significant MergeCo shareholder value
- **Consolidate Lachlan Fold Belt and KNP exploration ground**
  - Focus on ground acquisitions complementing Woodlawn and KNP tenure
  - Divest non-core assets, focus on scrip-based deals or farm-outs
- **Consolidate corporate overheads and offices**
  - Head corporate office will be in West Perth
  - Woodlawn site location for geology/project staff
  - Review staffing levels, personnel aligned with Woodlawn / KNP / Exploration priorities

# Kalgoorlie Nickel Project

## PFS Completed, Significant Medium to Long-Term Value



- **Excellent Resource and Infrastructure**
  - **796Mt grading 0.70% nickel and 0.048% cobalt** (at 0.5% Ni cog), 2012 JORC Mineral Resource
  - Screen beneficiated feed grade 1.1-1.2% nickel
  - Located within 100km radius of Kalgoorlie, granted Mining Leases, owned 100% Heron, unencumbered
  - All gas, road, rail, port infrastructure present
  - Benign environment, exhausted pits as TSF
  - Strong Community and Government support
  - Ravensthorpe HPAL nickel laterite successful re-commission, industry confidence improving
- **Studies & Partnership Search ongoing**
  - Vale Inco PFS in 2009 – \$34.5 million expenditure, no equity earned, immensely valuable Feasibility Study data set:
    - >95,000 metres drilled, JORC resource
    - Metallurgical assessments
  - Scoping Study completed for 20Ktpa operation – step change in economics, with C1 cost of US\$4.27/lb and a capital intensity of US\$13.82/annual Ni lb of production (HPAL US\$40/lb)
  - **KPMG Corporate Finance** appointed to coordinate the international search for a partner for the KNP development



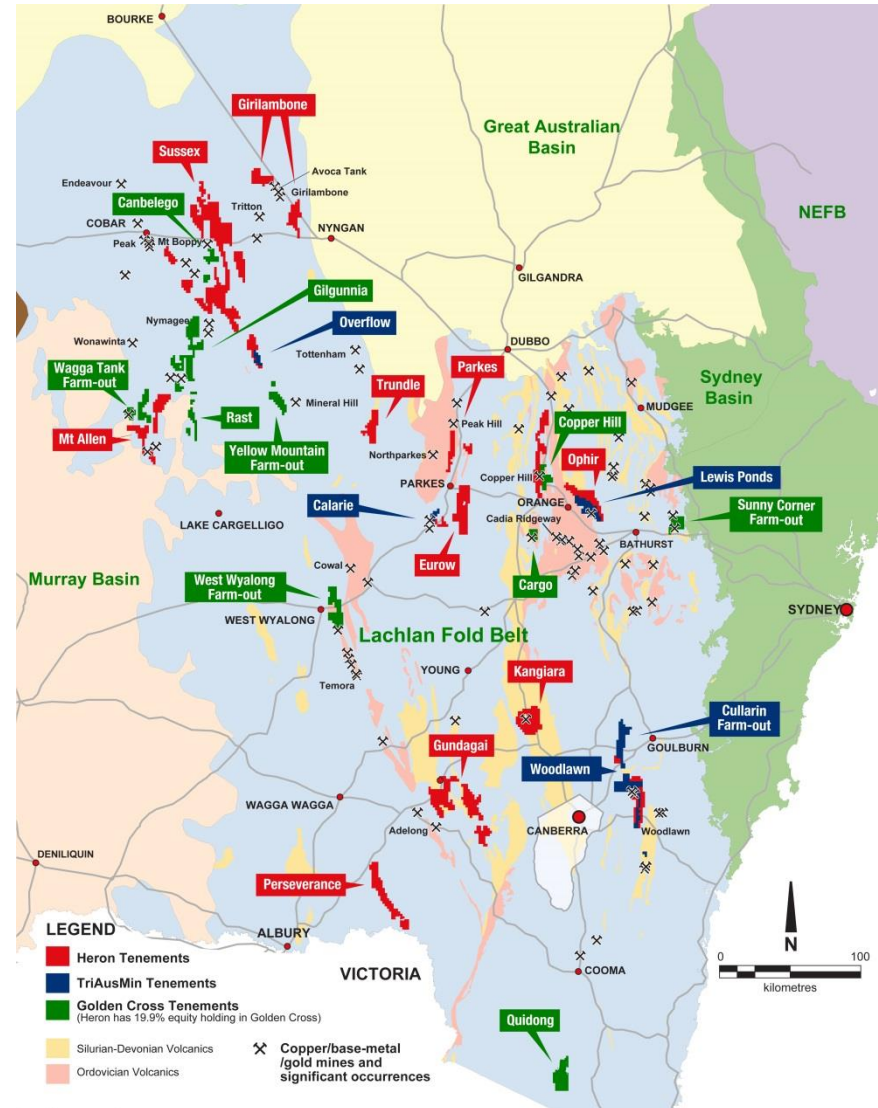
Refer to Heron announcements dated 9 Feb 09, 8 & 22 Apr 14 and 2 & 31 Jul 14. Heron confirms that all the material assumptions underpinning the respective production target or forecast financial information as disclosed in the announcements were applicable when disclosed at the time of first reporting and continue to apply and have not materially changed.



# Exploration Portfolio

## Complementary exploration portfolio with strong focus on Lachlan Fold Belt

- Lewis Ponds**
  - Indicated and Inferred Mineral Resource 6.6Mt at 0.2%Cu, 1.4%Pb, 2.4%Zn, 1.5g/t Au and 69g/t Ag<sup>1</sup>
  - Broad zones of near surface mineralisation identified in 2011 drilling - open pit potential
  - Excellent gold target, immediately along strike Regis McPhillamy gold deposit (2.5Moz, BFS current)
- Overflow**
  - 40km along strike from the Mineral Hill operation with potential for epithermal high grade gold and base-metal mineralisation
  - Significant drilling results include:
    - 4.7m @ 8.5g/t Au, 13.5% Zn, 7.1% Pb from 185m
    - 6.0m @ 7.6g/t Au, 3.6% Zn, 1.6% Pb from 136m
    - 7.0m @ 6.7g/t Au, 1.9% Zn, 1.4% Pb from 236m
- Calarie**
  - Farmed out to Kimberley Diamonds Ltd who are earning up to 75% over next two years
  - Inferred Mineral Resource of 0.5Mt at 2.2g/t Au at 1.0g/t cut-off
- Other Projects**
  - Pipeline of grass roots projects at Sussex, Eurow, Kamandra, Gundagai and elsewhere
  - 19.9% equity interest in GCR, Copper Hill



1) JORC 2004. Refer to TriAusMin release of 4 March 2014 for details. Cut-off grades applied in the Resource definition were based on a 3% Zn equivalent grade based on the following formula:  $(1240 \times \%Zn + 900 \times \%Pb + 2860 \times \%Cu + 430 \times g/tAu \times 0.03215 + 6.75 \times g/tAg \times 0.03215) / 1240$





**Heron Resources**  
Limited



# Summary

- Excellent strategic fit – complementary teams and alignment on Lachlan Fold Belt
- Focused on Woodlawn – immediate drilling, project studies, regular / significant news flow and fully funded with existing treasury
- Heron cash a game changer for the progression of TriAusMin's projects towards production
- Well funded MergeCo – through to completion of combined Woodlawn (WUP+WRP) BFS
- High potential for value uplift for all shareholders within the next 12-18 months as Woodlawn drilling & studies progress
- Desirable commodity exposure and market fundamentals – zinc, nickel and copper
- Effective Date for transaction expected 5<sup>th</sup> August 2014

# Company Contacts

- **Heron Resources** Limited
- Ian Buchhorn
- Managing Director



- **REGISTERED OFFICE**

- Level 1/37 Ord Street
- West Perth WA 6005
- Tel: 61 8 9215 4444
- Fax: 61 8 9215 4490

- [heron@heronresources.com.au](mailto:heron@heronresources.com.au)
- [www.heronresources.com.au](http://www.heronresources.com.au)

- **TriAusMin** Limited
- Wayne Taylor
- Managing Director





- **REGISTERED OFFICE**

- Suite 702/191 Clarence Street
- Sydney NSW 2000
- Tel: 61 2 9299 7800
- Fax: 61 2 9299 7500

- **CANADIAN CONTACT**

- Tel: 1 905 727 8688
- [inquire@triauxmin.com](mailto:inquire@triauxmin.com)
- [info@triauxmin.com](mailto:info@triauxmin.com)
- [www.triauxmin.com](http://www.triauxmin.com)

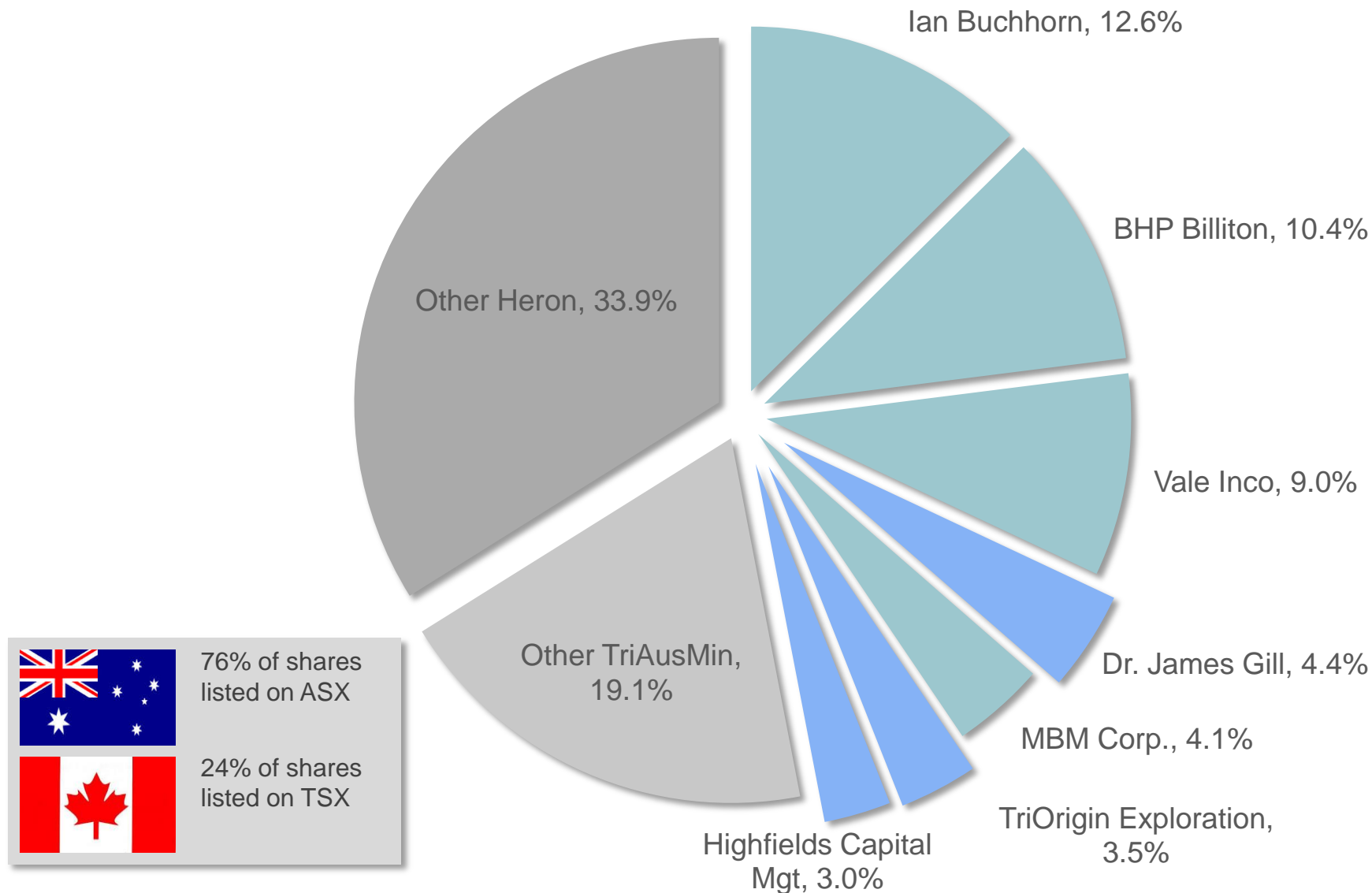
# Proforma Capital Structure

		 <b>(70%)</b>	 <b>(30%)</b>	<b>Pro-forma MergeCo<sup>2</sup></b>
<b>Shares on Issue (undiluted)</b>	n	252.99	251.39	360.88
<b>Share price (31-July-14)</b>	A\$	0.155	0.060	0.155
<b>Market cap</b>	<b>A\$m</b>	<b>39.2</b>	<b>15.1</b>	<b>56.0</b>
<b>Debt<sup>1</sup></b>	A\$m	+1.3	-1.3	0.0
<b>Cash (30-Jun-14)</b>	A\$m	32.9	0.6	33.5
<b>Listed Investments (30-Jun-134)</b>	A\$m	3.4	0.0	3.4
<b>Enterprise Value</b>	<b>A\$m</b>	<b>1.6</b>	<b>15.8</b>	<b>19.1</b>

<sup>1</sup> \$1.3m convertible note investment by HRR into TRO.

<sup>2</sup> Subject to Court approval and transaction becoming "Effective"

# MergeCo Shareholder Register



# Transaction Summary

## Structure

- Scheme of Arrangement (TriAusMin the Scheme vehicle)
- TriAusMin shareholders voted in favour on the transaction
- No Heron shareholder approval is required

## Consideration

- 1 Heron Share for 2.33 TriAusMin Shares
- Merged entity 70% HRR and 30% TRO/TOR
- Options have been dealt with by private treaty

## Listings

- ASX
- TSX (application approved subject to normal listing procedures)

## Conditions

- Transfer of mining lease SML20 tenure to TriAusMin (completed)
- TriAusMin Shareholder approval (completed)
- Other customary conditions
- Refer Scheme Implementation Agreement (10 March), Scheme Booklet (6 June)

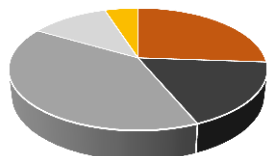
## Timetable

- Shareholders voted 28 July, Second Court Date 4 August, completion shortly after
- Business as usual until completion, Woodlawn drill plan, HRR and TRO exploration



# TriAusMin – In-situ Metal Inventory

## Resources – Woodlawn (WRP + WUP), Lewis Ponds



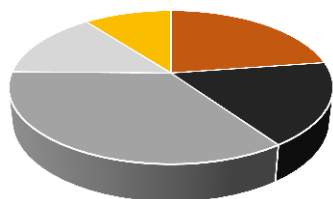
■ Cu ■ Pb ■ Zn ■ Ag ■ Au



■ Cu ■ Pb ■ Zn ■ Ag ■ Au



■ Cu ■ Pb ■ Zn ■ Ag ■ Au



■ Cu ■ Pb ■ Zn ■ Ag ■ Au

### Woodlawn Underground Project

	Mt	Zn %	Pb %	Cu %	Ag g/t	Au g/t
Measured + Indicated	8.58	10.25	4.02	1.80	84	0.54
Inferred	1.52	9.60	4.08	1.65	87	0.61

### Woodlawn Tailings Retreatment Project

	Mt	Zn %	Pb %	Cu %	Ag g/t	Au g/t
Measured + Indicated	9.4	2.33	1.36	0.52	32	0.30
Inferred	2.25	2.10	1.30	0.44	31	0.27

### Lewis Ponds

	Mt	Zn %	Pb %	Cu %	Ag g/t	Au g/t
Indicated	6.35	2.4	1.4	0.2	68	1.5
Inferred	0.27	3.0	1.9	0.1	96	1.1

### In-situ Metal Inventory

		Zn	Pb	Cu	Ag	Au
Tonnes (million)		1.45	0.66	0.25	54 Moz.	0.6 Moz.
Pounds (billion)		3.2	1.5	0.6		

WRP – Woodlawn Retreatment Project

WUP – Woodlawn Underground Project

<sup>1</sup> CIM and JORC compliant (as per the Australasian Code for Reporting Exploration Results, Mineral Resources and Ore Reserves (the 'JORC Code'), 2004 Edition, JORC of AusIMM, AIG & MC, December 2004). Please refer to pages 7 to 10 of the Company's September 12, 2013 Annual Report for full JORC Compliance and Declarations regarding Resource and Reserve disclosure.

# Heron – Mineral Resources

## Nickel Laterite Deposits

2012 JORC Resource		Mt	Ni %	Co %
Goongarrie	Measured	5.8	1.08	0.105
	Indicated	149.7	0.72	0.054
	Inferred	174.8	0.63	0.044
Siberia	Measured	-	-	-
	Indicated	10.8	0.64	0.051
	Inferred	184.5	0.67	0.044
Bulong	Measured	-	-	-
	Indicated	15.9	0.89	0.046
	Inferred	38.5	0.80	0.052
Hampton	Measured	-	-	-
	Indicated	-	-	-
	Inferred	75.4	0.73	0.044
Yerilla	Measured	3.8	0.94	0.048
	Indicated	41.7	0.79	0.044
	Inferred	94.7	0.71	0.058
Total	Measured	9.6	1.02	0.081
	Indicated	218.0	0.73	0.051
	Inferred	568.0	0.68	0.046

