

IMPRESSIVE GOLD RESULTS FROM LOWER SECTION OF HOLE 3 SHOWING 11M @ 3.4 g/t Au - WELL OUTSIDE ANY KNOWN RESOURCE AREA OUTLINE AT MT CANNINDAH

HIGHLIGHTS

- Excellent gold grades coming out of the deeper section of hole 3 (21CAEDD003). This hole has already delivered a massive copper hit with the mineralized intercept being 493m @ 1.17% CuEq, (0.89%Cu, 0.26 g/t Au, 15.2 g/t Ag) from surface (see ASX release 9 November 2021), and now it provides great gold results further down the hole.
- Gold intercept from 567m – 578m returning 11m @3.4g/t Au is certainly an excellent result which includes,
 - 3m @ 7.15 g/t Au(575m-578m), includes 1m @ 10.5 g/t Au and
 - 1m @8.3g/tAu.(567m to 568m)

DETAILS

Cannindah Resources Limited (“Cannindah”, “CAE”) is pleased to announce the next set of assay results from the drilling program currently underway at Mt Cannindah, copper gold silver project south of Gladstone near Monto in central Queensland (Figs 2 to 4). This drilling program was planned such that it may extend the current JORC resource, as well as test the continuity of higher-grade copper zones within the project area, and possibly locate new areas of interest for follow up and potential in-fill drilling. CAE has made major revisions to the original planned drilling program after intersecting copper mineralisation over hundreds (100’s) of metres in the first 7 holes to date. (Fig 5)

Fig 5 shows hole 21CAEDD003 in plan view in relation to historic holes. This hole was designed to test the plunge of the mineralisation to the west, it was drilled approximately west (260° magnetic), which is effectively 50 plus degrees different to the south-south-west (207° magnetic) bearing of hole 21CAEDD002. It is also drilling in the opposite direction to the previous Mt Cannindah historic holes. Significantly, hole 21CAEDD003 pushed on further down plunge to the west and discovered previously unknown or copper, gold and silver zones as well as enhancing some poorly delineated zones. This successful strategy led to the continuation of hole 21CAEDD003, with the objective of establishing the extent of the Mt Cannindah copper-gold -silver mineralised system down plunge and **well past** the previously known limit of the mineralised envelope at the project. Eventually the hole was terminated at 762.6m, at the limit of the drill rig’s capability. Although copper values are reduced in the deeper section, chalcopyrite blebs are present. Sulphidic mineralised hydrothermal breccia is present at the end of the hole, as it is in hole 21CAEDD002 which contains elevated silver at depth. As stated in the ASX Announcement of 9 November 2021, in spite of drilling the Cannindah system to great depths, we have not yet reached the limit of the mineralisation, encountering shows of copper, elevated silver, and extensive intrusive-driven alteration and sulphidic breccia to the bottom of all deep holes drilled to date. CAE are now reporting a **high grade gold intersection from hole 21CAEDD003**, emphasising how successful this targeted drilling strategy has been to date, particularly in reference to hole # 3 :

On 9 November 2021 CAE reported from hole 21CAEDD003 :

- 163m @ 1.44 % Cu, 0.40 g/t Au, 36 g/t Ag from the supergene and upper primary zone (14m to 177m)
- A lower primary zone (252m to 400m) : 148m @ 1.01% Cu, 0.22 g/ Au, 12.5 g/t Ag.

Figs 5 to 7 are respectively a plan and oblique cross sections of hole 3 ,that show gold and copper assay results in relation to the mineralised envelope that bounds the current (2011) resource estimate. Note that this envelope only extends to a downhole depth of 316m. All assay results beyond that depth, including the current high grade gold intercept, are new discoveries and not contained within the current resource estimate.

Assays above 316m downhole depth in hole 21CAEDD003 are within the bounding envelope but not necessarily contained within the current resource blocks. As shown in Figs 6 & 7, these assays fill data gaps between historic drillholes within the current mineralised envelope above 316m depth, and may contribute to increasing the grade and continuity of the copper, gold and silver zones. The mineralised breccia system is cut by relatively minor post mineral dykes.

Simply put , within the mineralised envelope of the current (2011) resource, hole # 3 filled data gaps and improved the grade continuity. In addition, by extending hole # 3 outside of the current resource outline, CAE have discovered significant new copper, silver and gold zones further down plunge .

Latest assay results from sulphidic breccia zones occurring outside the current resource outline have returned high grade gold results :

- The overall intercept is 11m @ 3.4 g/t Au ,13.5 g/t Ag and 0.25 % Cu (567m to 578m) which includes :
- 1m @ 8.3 g/t Au , 24 g/t Ag, 0.37% Cu (567m – 568m)
- 3m @ 7.15 g/t Au, 25.8 g/t Ag, 0.36%Cu (575m-578m)
- Which Includes 1m @ 10.52 g/t Au 576m-577m

Table 1: Summary of Latest Results - hole 21CAEDD003

Hole ID	Sample	From	To	Au	Ag	Cu
21CAEDD003	5289023	567	568	8.306	24.6	3741
21CAEDD003	5289024	568	569	0.686	9.8	255
21CAEDD003	5289025	569	570	1.839	7.9	1052
21CAEDD003	5289026	570	571	0.145	3.2	530
21CAEDD003	5289027	571	572	2.658	13.7	3516
21CAEDD003	5289028	572	573	1.764	7.4	2379
21CAEDD003	5289029	573	574	0.022	1.6	573
21CAEDD003	5289030	574	575	0.523	3.1	569
21CAEDD003	5289031	575	576	4.513	11.2	2788
21CAEDD003	5289032	576	577	10.526	44	3852
21CAEDD003	5289033	577	578	6.425	22.2	4047

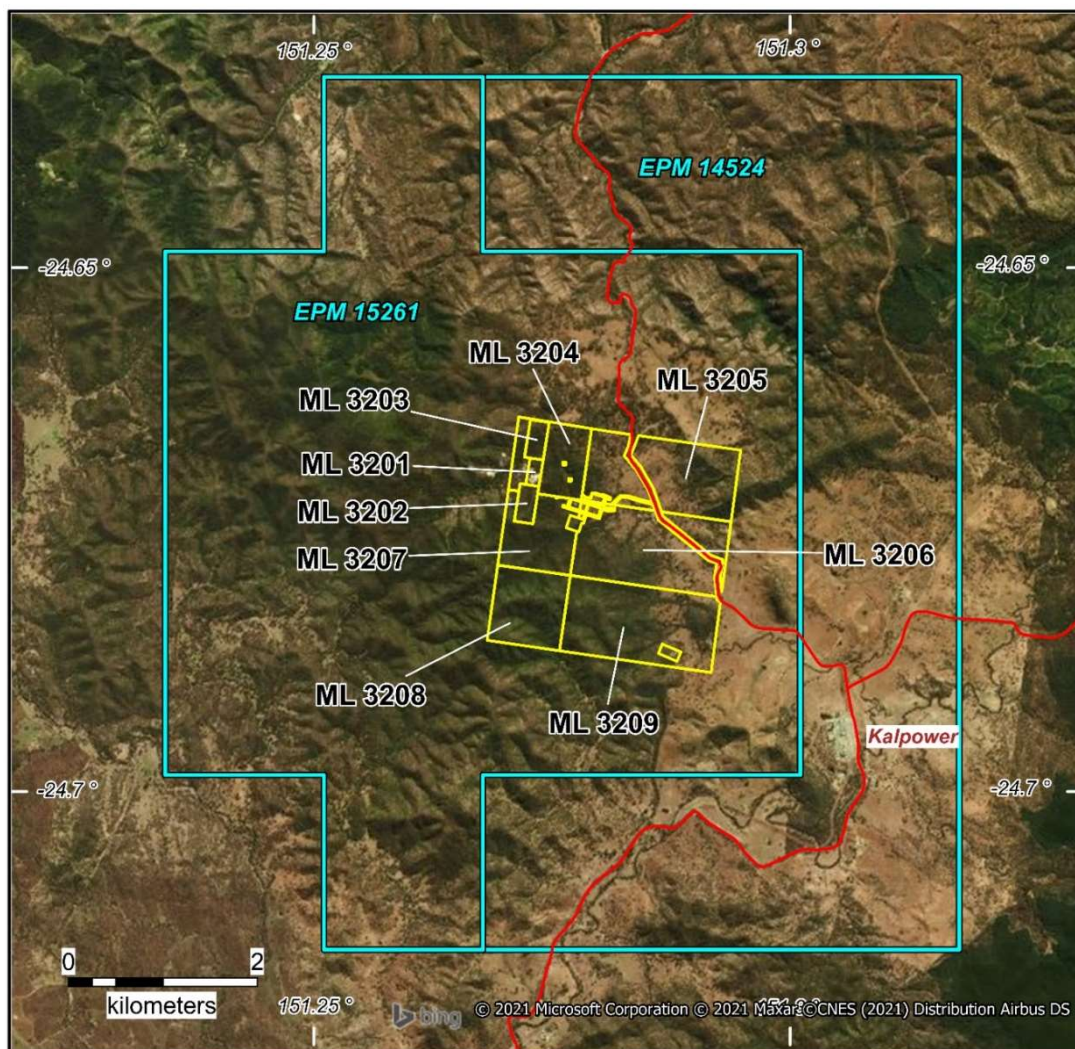


The table in the appendix lists the complete Cu,Au,Ag,S assays for pyrite , chalcopyrite, chalcocite visual estimates 0- 616m of hole 21CAEDD003. Perusal of this table shows that not only do the results of Hole 21CAEDD003 show that copper, gold, silver mineralisation within the hydrothermal breccia is continuous from surface to in excess of 500m , there are wide zones outside the previously known mineralised envelope.

Fig 1 below is a core photo (NQ Core) showing a section of the gold zone at 574m to 578 m in hole 21CAEDD003, within sulphidic hydrothermal breccia associated with strong chlorite alteration.



Fig1: Core section from 574 -578 m Hole 3 - 21CAEDD003



Tenure

EPM 14524

- 9 sub-blocks
- ~ 28 sq km

EPM 15261

- 14 sub-blocks
- ~ 43.5 sq km

MLs 3201-3209 (contiguous)

- ~ 5.7 sq km

**Total of 71.5 sq km of Exploration Permits
& 5.7 sq km of Mining Leases**

OWNERSHIP

The Mt Cannindah Project is 100%
owned by Cannindah Resources Limited

Mt Cannindah Projects

Mt Cannindah Mining Pty Ltd
wholly owned subsidiary of



Cannindah Resources
Limited



Terra Search Pty Ltd
March 2021

CAE_MC_210001_Tenure2021.WOR

Fig 2. Mt Cannindah project Granted Mining Leases and EPMs, Central Queensland.

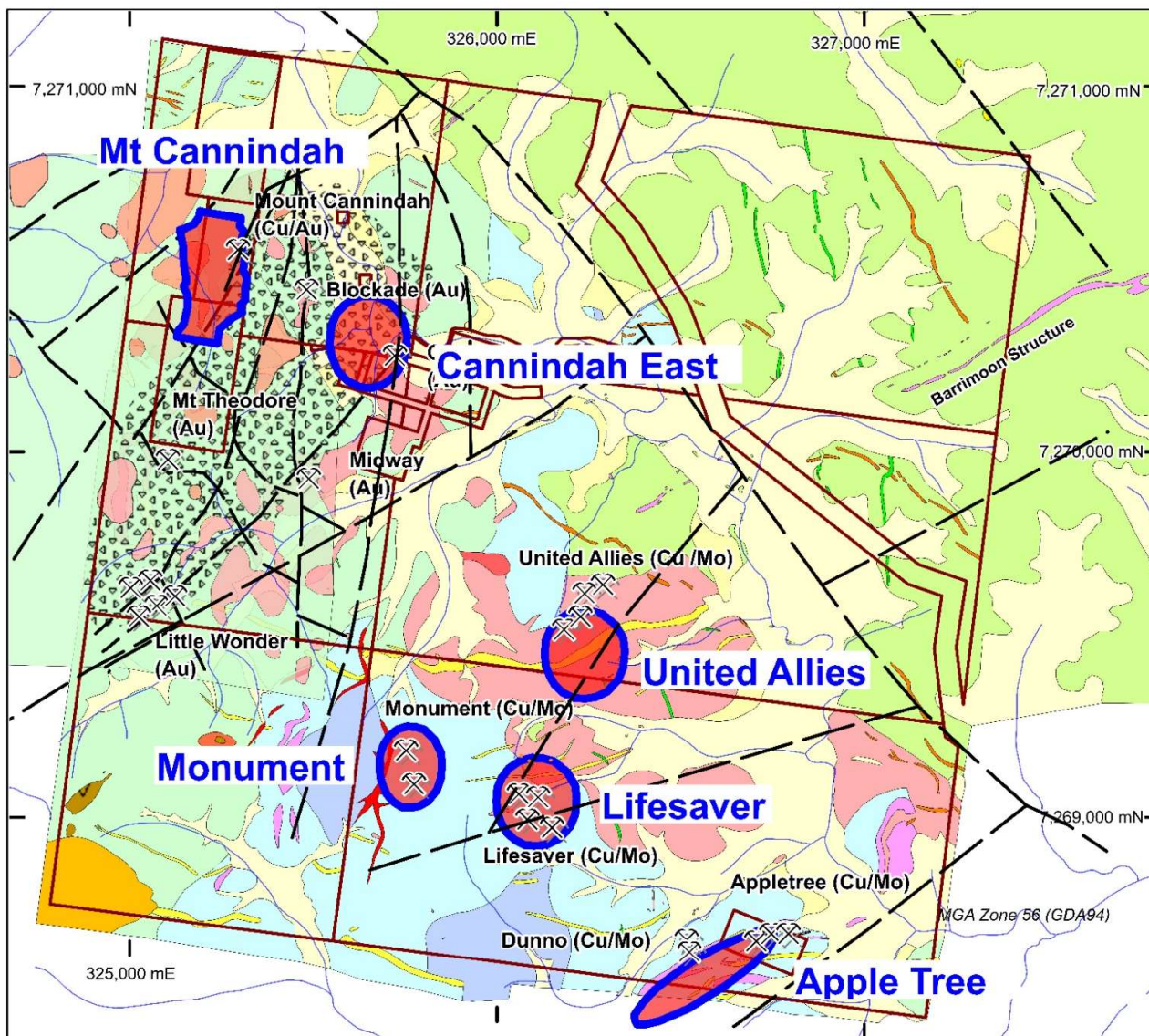


Cannindah Resources
Limited

ASX RELEASE

16 November 2021

ASX Code: CAE



Mt Cannindah

5.5Mt @ 0.92 % Cu, 0.34 g/t Au
& 14.9 g/t Ag (JORC, 2004)

Cannindah East

245,000 t @ 2.8 g/t Au
(Non-JORC)

United Allies

2Mt @ 0.5% Cu, 179ppm Mo
(Non-JORC)

Monument/Lifesaver

8Mt @ 0.4% Cu
Inferred (Non-JORC)

Apple Tree

30,000 t @ 2.1% Cu , 1.7 g/t Au
& 20 g/t Ag (Non-JORC)

Mt Cannindah Projects Mineral Resources

Mt Cannindah Mining Pty Ltd
wholly owned subsidiary of

Cannindah Resources
Limited



Terra Search Pty Ltd
March 2021

CAE_MC_210004_Resource.wor

Fig 3. Mt Cannindah project Location of identified resources & known targets



Cannindah Resources
Limited

ASX RELEASE

16 November 2021

ASX Code: CAE

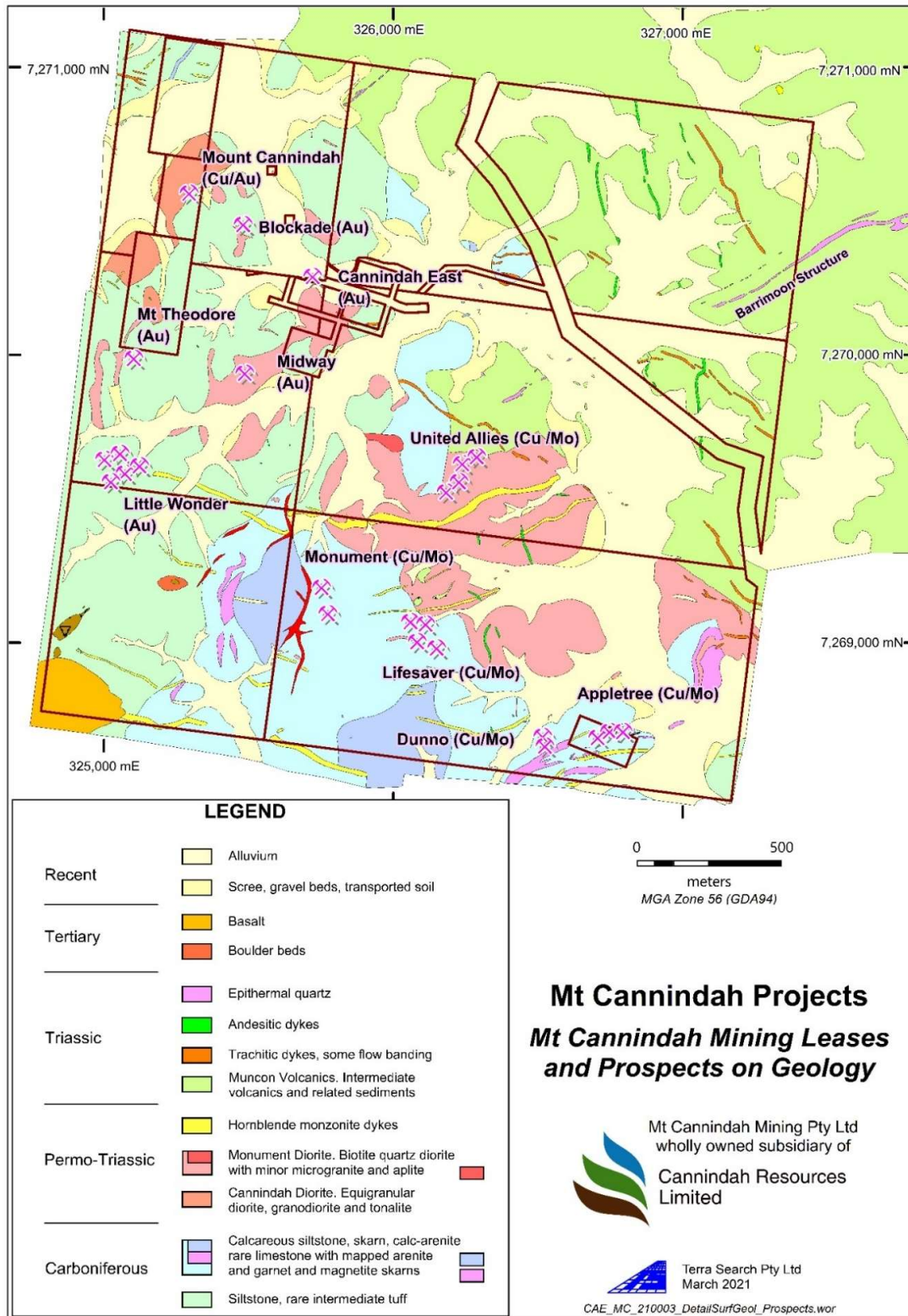


Fig 4. Mt Cannindah project geology and prospect areas

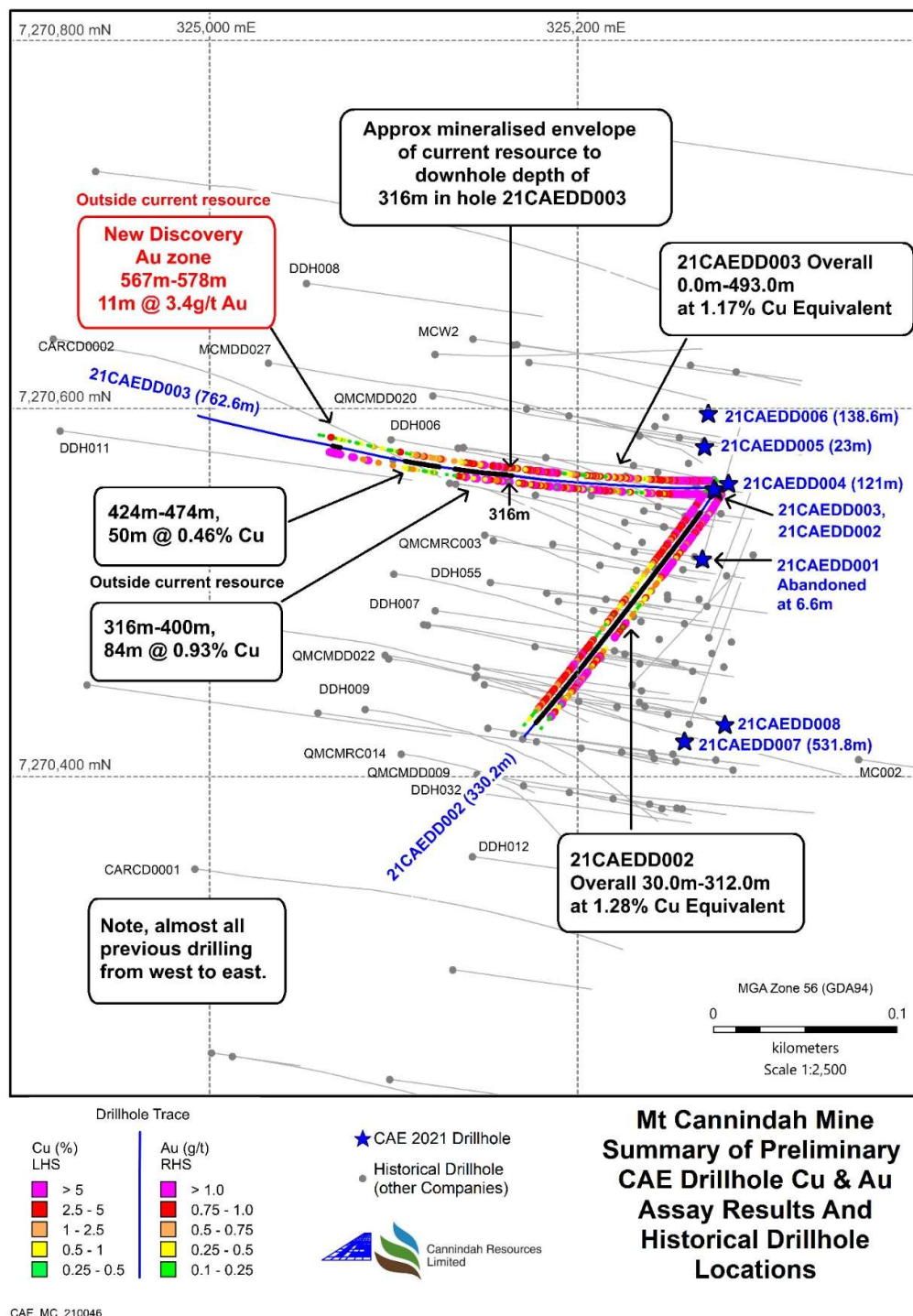


Fig 5. Mt Cannindah mine area, plan view of recent holes 21CAEDD002 & 3 showing drill traces in relation to previous drilling and copper/gold results. Note the current (Helman & Schofield, 2011) resource envelope only extends to a downhole depth in hole # 3 to 316m. Note that recent gold and copper results below 316m in hole # 3 are outside this resource envelope.

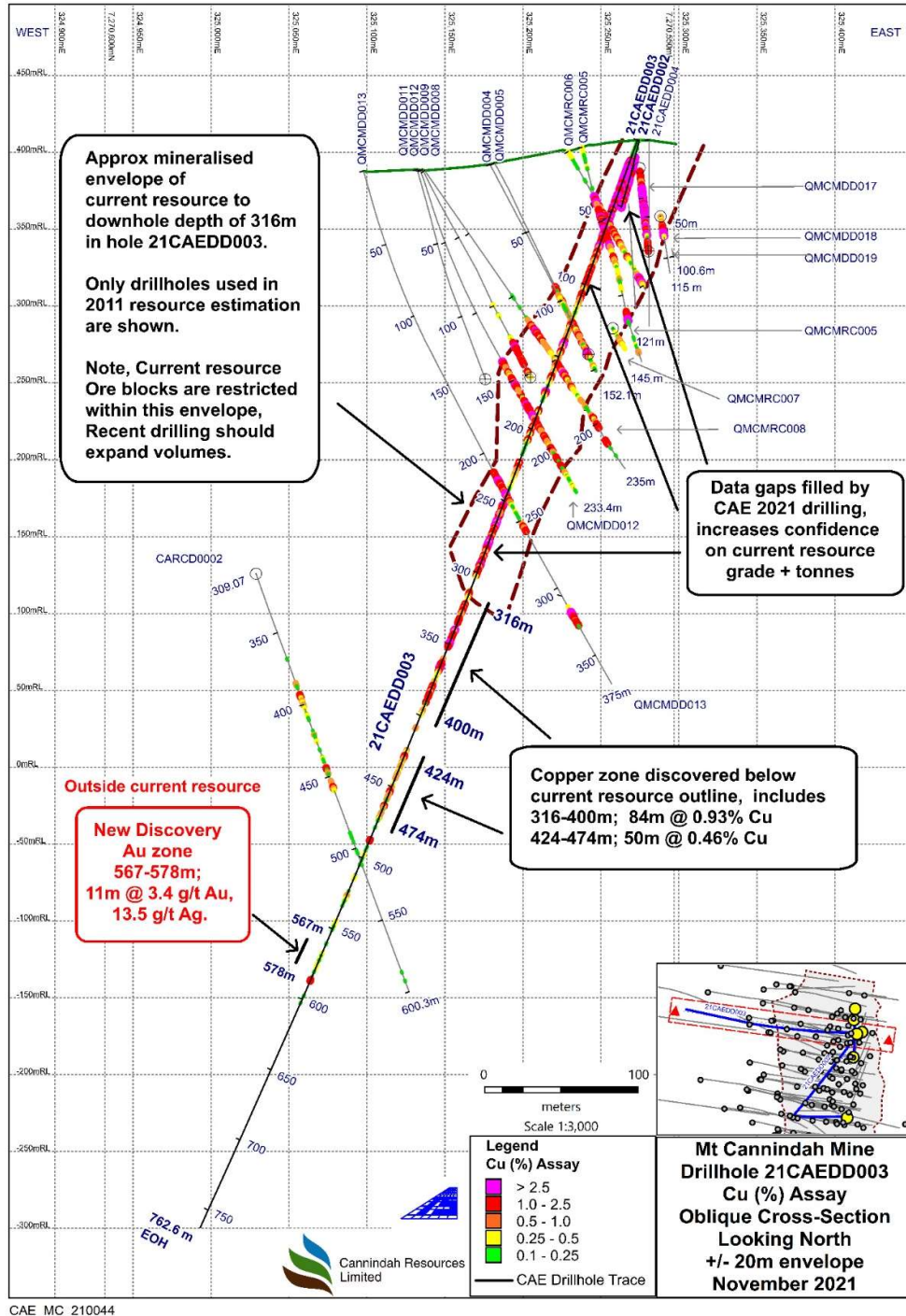


Fig 6. Mt Cannindah mine area, oblique section of recent drillhole 21CAEDD003, showing new gold discovery in relation to Cu assay results and mineralized envelope utilised in current (2011) resource estimation. Note that hole # 3 has intersected 493m @ 1.17% Cu equivalent from surface. High grade gold intercept reported here of 11m @ 3.4 g/t Au and significant copper zones of 84m @ 0.93 % Cu (316m – 400m) and 50m @ 0.46% Cu (424m to 474m) all occur outside current resource outline. Assays above 316m depth are within the bounding envelope but not necessarily contained within the current resource blocks.

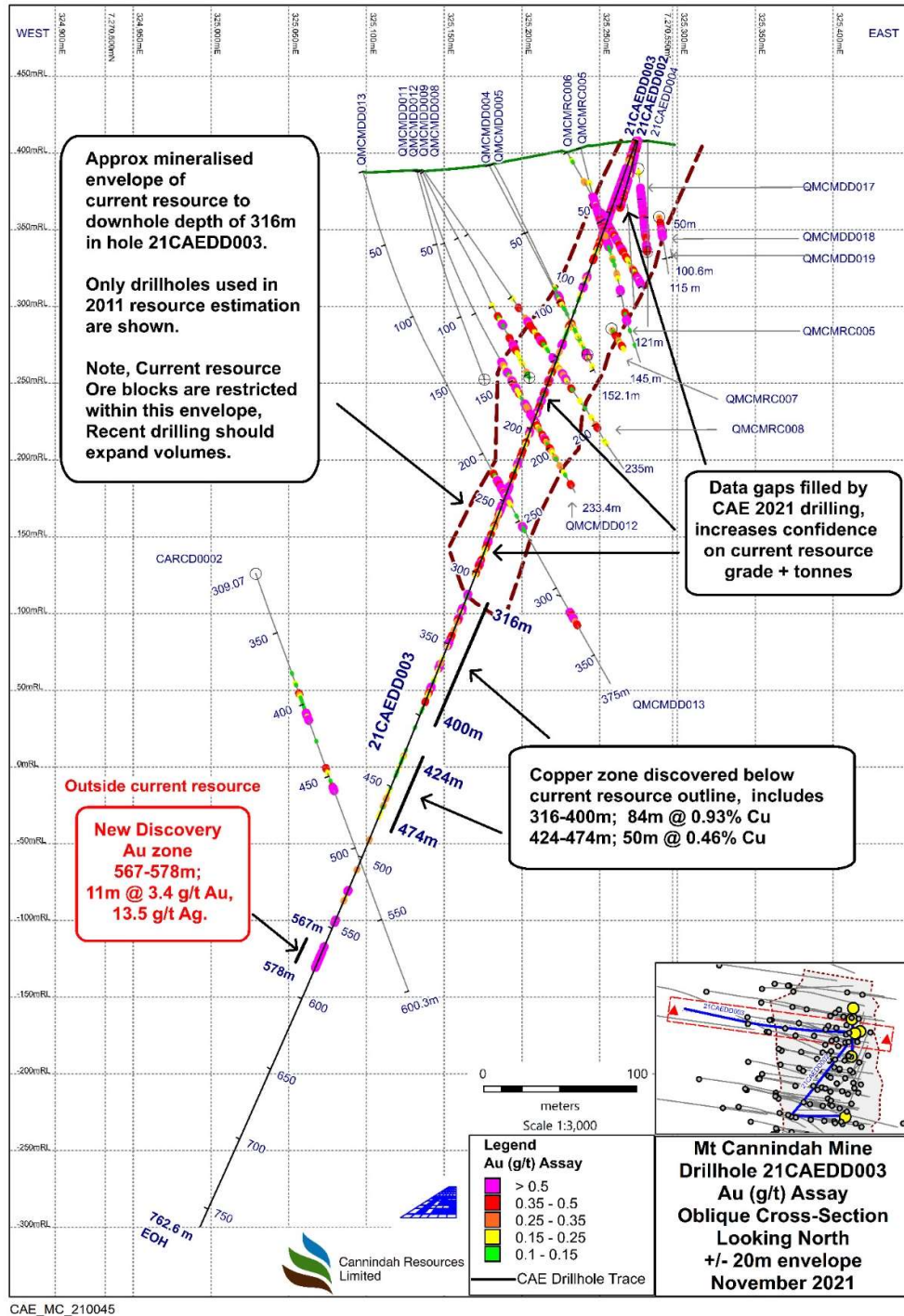


Fig 7. Mt Cannindah mine area, oblique section of recent drillhole 21CAEDD003, showing new gold discovery in relation to Au assay results and mineralized envelope utilised in current (2011) resource estimation.. High grade gold intercept reported here of 11m @ 3.4 g/t occurs outside current resource outline. Hole # 3 has filled assay data gaps above 316m downhole ,within current resource outline. Assays above 316m depth are within the bounding envelope but not necessarily contained within the current resource blocks.

COMPETENT PERSON STATEMENT

The information in this report that relates to exploration results is based on information compiled by Dr. Simon D. Beams, a full-time employee of Terra Search Pty Ltd, geological consultants employed by Cannindah Resources Limited to carry out geological evaluation of the mineralisation potential of their Mt Cannindah Project, Queensland, Australia. Dr Beams is also a non-Executive Director of Cannindah Resources Limited.

Dr. Beams has BSc Honours and PhD degrees in geology; he is a Member of the Australasian Institute of Mining and Metallurgy (Member #107121) and a Member of the Australian Institute of Geoscientists (Member # 2689). Dr. Beams has sufficient relevant experience in respect to the style of mineralization, the type of deposit under consideration and the activity being undertaken to qualify as a Competent Person within the definition of the 2012 Edition of the Australasian Code for Reporting of Exploration Results, Mineral Resources and Ore Reserves ("JORC Code).

Dr. Beams consents to the inclusion in the report of the matters based on this information in the form and context in which it appears.

Disclosure:

Dr Beams' employer Terra Search Pty Ltd holds ordinary shares in Cannindah Resources Limited.

For further information, please contact:

Tom Pickett
Executive Chairman
Ph: 61 7 5557 8791

**Appendix 1 Table of Cu,Au,Ag,S assays and chalcocite chalcopyrite, pyrite visual estimates, hole 21CAEDD003
0-611m**

From Depth m	To Depth m	Cu %	Au g/t	Ag g/t	Sulphur %	Chalcocite %	Pyrite Visual %	Chalco- pyrite Visual %	Lithology
0	0.5	0.08	0.94	19.5	0.15				Oxidised gossanous hydrothermal breccia
0.5	1	0.06	0.33	30.0	0.51				Oxidised gossanous hydrothermal breccia
1	1.5	0.08	0.31	39.0	0.24				Oxidised gossanous hydrothermal breccia
1.5	2	0.10	0.19	24.7	0.26				Oxidised gossanous hydrothermal breccia
2	2.5	0.11	0.26	10.0	0.13				Oxidised gossanous hydrothermal breccia
2.5	3	0.11	0.45	45.7	0.19				Oxidised gossanous hydrothermal breccia
3	3.5	0.06	0.11	15.3	0.21				Oxidised gossanous hydrothermal breccia
3.5	4	0.10	0.15	25.3	0.10				Oxidised gossanous hydrothermal breccia
4	4.5	0.11	0.39	58.8	0.12				Oxidised gossanous hydrothermal breccia
4.5	5	0.11	0.21	20.1	0.16				Oxidised gossanous hydrothermal breccia
5	5.5	0.10	1.11	16.5	0.28				Oxidised gossanous hydrothermal breccia
5.5	6	0.08	2.34	36.1	0.33				Oxidised gossanous hydrothermal breccia
6	6.5	0.06	0.18	6.9	0.24				Oxidised gossanous hydrothermal breccia
6.5	7	0.08	0.05	6.6	0.04				Oxidised gossanous hydrothermal breccia
7	7.5	0.18	0.35	77.4	0.07				Oxidised gossanous hydrothermal breccia
7.5	8	0.13	0.18	8.2	0.03				Oxidised gossanous hydrothermal breccia
8	8.5	0.13	0.43	21.5	0.16				Oxidised gossanous hydrothermal breccia
8.5	9	0.14	0.46	26.3	0.10				Oxidised gossanous hydrothermal breccia
9	9.5	0.11	0.40	14.3	0.04				Oxidised gossanous hydrothermal breccia
9.5	10	0.18	1.06	24.0	0.27				Oxidised gossanous hydrothermal breccia
10	10.5	0.07	0.18	7.3	0.26				Oxidised gossanous hydrothermal breccia
10.5	11	0.11	0.27	5.8	0.09				Oxidised gossanous hydrothermal breccia



From Depth m	To Depth m	Cu %	Au g/t	Ag g/t	Sulphur %	Chalcocite %	Pyrite Visual %	Chalco-pyrite Visual %	Lithology
11	11.5	0.11	0.28	11.8	0.06				Oxidised gossanous hydrothermal breccia
11.5	12	0.15	0.31	24.0	0.21				Oxidised gossanous hydrothermal breccia
12	12.5	0.14	0.37	28.7	0.18				Oxidised gossanous hydrothermal breccia
12.5	13	0.10	0.18	10.8	0.20				Oxidised gossanous hydrothermal breccia
13	13.5	0.09	0.37	18.0	0.17				Oxidised gossanous hydrothermal breccia
13.5	14	0.16	0.26	38.1	0.99				Oxidised gossanous hydrothermal breccia
14	14.5	1.22	0.10	19.3	2.06	1.0			Supergene hydrothermal breccia
14.5	15	2.11	0.21	10.8	3.10	4.0			Supergene hydrothermal breccia
15	15.5	1.60	0.21	6.8	3.16	5.0			Supergene hydrothermal breccia
15.5	16	2.82	0.28	9.7	9.58	8.0			Supergene hydrothermal breccia
16	16.5	3.05	0.32	28.2	9.54	10.0	0.5		Supergene hydrothermal breccia
16.5	17	0.89	0.15	5.7	2.32	3.0	0.5		Supergene hydrothermal breccia
17	17.5	3.08	0.08	21.1	3.10	2.0	0.2		Supergene hydrothermal breccia
17.5	18	1.56	0.09	13.1	1.72	1.0	0.2		Supergene hydrothermal breccia
18	18.5	0.71	0.07	5.1	0.94	2.0	0.2		Supergene hydrothermal breccia
18.5	19	0.83	0.07	6.0	1.46	2.0	0.2		Supergene hydrothermal breccia
19	19.5	5.65	0.59	59.0	6.93	15.0			Supergene hydrothermal breccia
19.5	20	6.11	0.90	33.8	5.90	10.0			Supergene hydrothermal breccia
20	20.5	5.50	0.91	48.0	9.91	10.0			Supergene hydrothermal breccia
20.5	21	0.98	0.20	8.6	1.36	3.0			Supergene hydrothermal breccia
21	21.5	2.61	0.03	9.6	1.42	2.0	0.5		Supergene hydrothermal breccia
21.5	22	3.03	1.09	34.8	9.14	5.0	0.5		Supergene hydrothermal breccia
22	22.5	2.59	0.98	18.7	3.25	4.0			Supergene hydrothermal breccia



Cannindah Resources
Limited

ASX RELEASE

16 November 2021

ASX Code: CAE

From Depth m	To Depth m	Cu %	Au g/t	Ag g/t	Sulphur %	Chalcocite %	Pyrite Visual %	Chalco-pyrite Visual %	Lithology
22.5	23	3.16	0.80	30.4	8.34	2.0			Supergene hydrothermal breccia
23	23.5	3.57	0.23	18.1	4.39	3.0			Supergene hydrothermal breccia
23.5	24	4.49	0.61	31.1	8.70	5.0			Supergene hydrothermal breccia
24	24.5	8.86	2.52	64.1	15.05	15.0		0.5	Supergene hydrothermal breccia
24.5	25	5.93	2.60	52.1	9.08	15.0		1.0	Supergene hydrothermal breccia
25	25.5	2.51	1.32	48.6	1.37	8.0	0.5		Supergene hydrothermal breccia
25.5	26	4.10	0.48	63.0	4.16	3.0	0.5	2.0	Supergene hydrothermal breccia
26	26.5	3.13	0.98	49.3	7.15	5.0	8.0	1.0	Supergene hydrothermal breccia
26.5	27	3.01	1.61	55.8	8.81	5.0	8.0		Supergene hydrothermal breccia
27	27.5	3.20	1.31	53.4	6.22	3.0	3.0	2.0	Supergene hydrothermal breccia
27.5	28	4.78	3.24	75.3	15.24	5.0	5.0	2.0	Supergene hydrothermal breccia
28	28.5	3.78	1.85	61.1	7.14	2.0	3.0	2.0	Supergene hydrothermal breccia
28.5	29	4.78	0.60	53.7	5.74	2.0	5.0	4.0	Supergene hydrothermal breccia
29	29.5	3.64	0.48	47.9	4.73	3.0	5.0	5.0	Supergene hydrothermal breccia
29.5	30	2.46	0.32	41.8	5.79	2.0	3.0	3.0	Supergene hydrothermal breccia
30	30.5	2.42	1.12	59.8	8.97	2.0	5.0	4.0	Supergene hydrothermal breccia
30.5	31	2.06	0.26	25.6	5.22	2.0	5.0	4.0	Supergene hydrothermal breccia
31	31.5	1.19	0.30	18.7	3.64	1.0	5.0	4.0	Hydrothermal Infill Breccia
31.5	32	2.48	0.43	36.1	9.18	0.5	5.0	4.0	Hydrothermal Infill Breccia
32	32.5	2.71	0.64	48.7	6.68		5.0	5.0	Hydrothermal Infill Breccia
32.5	33	1.46	0.19	21.6	2.28		5.0	4.0	Hydrothermal Infill Breccia
33	34	3.62	0.80	44.5	7.79	0.5	8.0	10.0	Hydrothermal Infill Breccia
34	35	1.34	0.56	31.3	6.07		8.0	3.0	Hydrothermal Infill Breccia
35	36	2.45	0.89	39.8	6.18		3.0	5.0	Hydrothermal Infill Breccia



From Depth m	To Depth m	Cu %	Au g/t	Ag g/t	Sulphur %	Chalcocite %	Pyrite Visual %	Chalco- pyrite Visual %	Lithology
36	37	1.58	0.86	35.2	6.05		5.0	5.0	Hydrothermal Infill Breccia
37	38	1.78	1.36	28.6	5.56	0.1	3.0	3.0	Hydrothermal Infill Breccia
38	39	3.43	3.72	64.6	11.18		5.0	15.0	Hydrothermal Infill Breccia
39	40	2.53	0.84	77.6	6.20		5.0	8.0	Hydrothermal Infill Breccia
40	41	3.10	0.63	51.7	5.83	0.5	5.0	5.0	Hydrothermal Infill Breccia
41	42	2.20	1.42	35.7	4.23		3.0	5.0	Hydrothermal Infill Breccia
42	43	2.75	0.38	38.7	3.69		2.0	5.0	Hydrothermal Infill Breccia
43	44	1.80	0.61	32.6	6.97		8.0	3.0	Hydrothermal Infill Breccia
44	45	1.31	0.20	21.4	2.88		2.0	2.0	Hydrothermal Infill Breccia
45	46	0.89	0.99	16.6	3.21		3.0	0.5	Hydrothermal Infill Breccia
46	47	2.96	0.83	41.9	5.29		3.0	10.0	Hydrothermal Infill Breccia
47	48	3.55	0.47	35.1	6.29		1.0	10.0	Hydrothermal Infill Breccia
48	49	1.22	0.81	20.3	4.05		3.0	0.5	Hydrothermal Infill Breccia
49	50	0.95	0.38	36.6	3.00		2.0	2.0	Hydrothermal Infill Breccia
50	51	1.32	0.42	39.9	4.78		3.0	3.0	Hydrothermal Infill Breccia
51	52	2.48	1.21	41.0	12.37		5.0	8.0	Hydrothermal Infill Breccia
52	53	2.92	1.77	49.6	6.51		3.0	10.0	Hydrothermal Infill Breccia
53	54	2.77	1.63	58.4	11.36	0.5	5.0	10.0	Hydrothermal Infill Breccia
54	55	0.75	0.93	53.5	12.67		2.0	3.0	Hydrothermal Infill Breccia
55	56	1.84	3.07	31.9	8.18	0.5	2.0	5.0	Hydrothermal Infill Breccia
56	57	2.83	0.94	43.0	8.44		3.0	8.0	Hydrothermal Infill Breccia
57	58	1.80	0.53	30.6	5.04		2.0	5.0	Hydrothermal Infill Breccia
58	59	0.91	0.52	13.1	2.81		3.0	2.0	Hydrothermal Infill Breccia
59	60	2.53	0.60	44.7	6.27		2.0	5.0	Hydrothermal Infill Breccia
60	61	3.04	1.17	46.1	7.00		2.0	10.0	Hydrothermal Infill Breccia



From Depth m	To Depth m	Cu %	Au g/t	Ag g/t	Sulphur %	Chalcocite %	Pyrite Visual %	Chalco-pyrite Visual %	Lithology
61	62	4.60	0.53	110.3	5.99		1.0	10.0	Hydrothermal Infill Breccia
62	63	1.50	0.31	26.6	3.26		1.0	3.0	Hydrothermal Infill Breccia
63	64	4.47	0.86	69.5	7.90		3.0	10.0	Hydrothermal Infill Breccia
64	65	3.59	0.30	55.4	4.56		0.5	10.0	Hydrothermal Infill Breccia
65	66	2.89	0.35	44.9	4.75		2.0	10.0	Hydrothermal Infill Breccia
66	67	0.92	0.12	14.8	1.96		1.0	2.0	Hydrothermal Infill Breccia
67	68	0.35	0.08	6.0	1.32		2.0	0.2	Hydrothermal Infill Breccia
68	69	1.40	0.31	22.8	5.70		4.0	5.0	Hydrothermal Infill Breccia
69	70	2.34	0.35	33.9	5.39		2.0	8.0	Hydrothermal Infill Breccia
70	71	1.36	0.45	27.4	7.83		3.0	3.0	Hydrothermal Infill Breccia
71	72	1.58	0.34	27.4	4.26		1.0	5.0	Hydrothermal Infill Breccia
72	73	1.32	0.27	19.8	6.43		1.0	5.0	Hydrothermal Infill Breccia
73	74	3.77	0.47	62.3	8.84		2.0	10.0	Hydrothermal Infill Breccia
74	75	0.90	0.41	33.8	8.72		2.0	1.0	Fault/Crush Zone
75	76	0.81	0.23	51.1	5.64		3.0	0.5	Fault/Crush Zone
76	77	0.68	0.15	21.3	7.52		5.0	0.5	Fault/Crush Zone
77	78	1.74	0.22	62.7	5.83		5.0	2.0	Fault/Crush Zone
78	79	1.10	0.22	34.7	5.14		2.0	0.5	Hydrothermal Infill Breccia
79	80	0.62	0.14	18.2	6.56		2.0	1.0	Hydrothermal Infill Breccia
80	81	0.44	0.17	16.4	6.12		2.0	0.5	Diorite
81	82	2.19	0.44	73.6	8.98		3.0	5.0	Hydrothermal Infill Breccia
82	83	1.86	0.49	65.4	6.21		2.0	2.0	Hydrothermal Infill Breccia
83	84	0.66	0.05	26.5	3.07		1.0	1.0	Hydrothermal Infill Breccia
84	85	0.39	0.03	13.6	1.75		3.0	2.0	Hydrothermal Infill Breccia
85	86	0.80	0.05	28.4	4.79		5.0	5.0	Hydrothermal Infill Breccia
86	87	0.47	0.04	14.4	1.89		1.0	1.0	Hydrothermal Infill Breccia
87	88	0.54	0.05	17.1	3.90		4.0	1.0	Hydrothermal Infill Breccia



From Depth m	To Depth m	Cu %	Au g/t	Ag g/t	Sulphur %	Chalcocite %	Pyrite Visual %	Chalco-pyrite Visual %	Lithology
88	89	1.22	0.06	34.0	3.07		2.0	3.0	Hydrothermal Infill Breccia
89	90	1.44	0.08	64.2	3.74		3.0	4.0	Hydrothermal Infill Breccia
90	91	0.65	0.10	22.9	3.24		1.0	1.0	Hydrothermal Infill Breccia
91	92	2.30	0.12	60.1	4.78		2.0	8.0	Hydrothermal Infill Breccia
92	93	1.51	0.14	80.1	3.77		3.0	5.0	Hydrothermal Infill Breccia
93	94	1.28	0.11	41.7	3.45		2.0	2.0	Hydrothermal Infill Breccia
94	95	0.84	0.73	35.1	5.26		5.0	1.5	Hydrothermal Infill Breccia
95	96	1.22	0.26	38.4	6.05		5.0	3.0	Hydrothermal Infill Breccia
96	97	2.21	0.29	55.9	7.03		5.0	6.0	Hydrothermal Infill Breccia
97	98	1.24	0.16	38.4	4.36		3.0	3.0	Hydrothermal Infill Breccia
98	99	1.09	0.11	30.3	4.14		3.0	2.0	Fault/Crush Zone
99	100	1.22	0.06	33.5	3.37		1.0	3.0	Diorite
100	101	1.59	0.19	55.3	3.56		2.0	4.0	Hydrothermal Infill Breccia
101	102	1.05	1.25	32.9	3.62		1.0	3.0	Hydrothermal Infill Breccia
102	103	0.66	0.03	22.5	4.07		0.5	2.0	Hydrothermal Infill Breccia
103	104	0.32	0.05	9.6	2.70		5.0	1.0	Hydrothermal Infill Breccia
104	105	0.39	0.02	8.0	1.08		1.0	1.0	Hydrothermal Infill Breccia
105	106	0.73	0.06	11.5	2.03		0.5	2.0	Hydrothermal Infill Breccia
106	107	1.61	0.22	26.6	3.74		3.0	5.0	Hydrothermal Infill Breccia
107	108	1.89	0.24	32.6	7.00		1.0	5.0	Hydrothermal Infill Breccia
108	109	0.50	0.06	8.1	2.45		2.0	1.0	Diorite
109	110	1.17	0.14	18.6	2.87		2.0	4.0	Diorite
110	111	0.72	0.11	11.7	1.99		1.0	2.0	Hydrothermal Infill Breccia
111	112	0.60	0.06	9.6	3.02		3.0	1.0	Hydrothermal Infill Breccia
112	113	0.65	0.07	11.7	5.14		2.0	2.0	Diorite
113	114	0.79	0.08	11.8	1.41		1.0	2.0	Hydrothermal Infill Breccia
114	115	0.37	0.07	7.2	1.94		5.0	1.0	Diorite



From Depth m	To Depth m	Cu %	Au g/t	Ag g/t	Sulphur %	Chalcocite %	Pyrite Visual %	Chalco- pyrite Visual %	Lithology
115	116	0.39	0.07	8.4	2.26		1.0	0.5	Hydrothermal Infill Breccia
116	117	0.31	0.05	8.4	2.57		0.2	0.1	Hydrothermal Infill Breccia
117	118	0.13	0.02	2.3	1.78		0.2	0.1	Hydrothermal Infill Breccia
118	119	0.49	0.14	10.1	7.83		3.0	2.0	Hydrothermal Infill Breccia
119	120	0.14	0.07	3.2	4.74		5.0	0.2	Hydrothermal Infill Breccia
120	121	0.13	0.10	2.7	8.17		2.0	1.0	Hydrothermal Infill Breccia
121	122	0.25	0.02	5.4	2.62		1.0	0.2	Diorite
122	123	0.28	0.06	3.4	1.84		0.2	0.1	Diorite
123	124	0.32	0.09	5.2	1.94		0.3	0.2	Hydrothermal Infill Breccia
124	125	0.30	0.03	4.8	2.10		1.0	0.5	Hydrothermal Infill Breccia
125	126	0.26	0.03	4.0	2.85		0.5	0.5	Diorite
126	127	0.15	0.02	2.1	0.67		0.2	8.0	Diorite
127	128	2.14	0.29	32.7	7.17		3.0	8.0	Hydrothermal Infill Breccia
128	129	1.49	0.39	22.7	5.41		2.0	4.0	Hydrothermal Infill Breccia
129	130	0.61	0.22	15.9	6.32		1.0	2.0	Hydrothermal Infill Breccia
130	131	0.49	0.23	7.8	2.38		2.0	1.0	Hydrothermal Infill Breccia
131	132	0.17	0.02	2.2	1.15		2.0	0.2	Diorite
132	133	0.52	0.11	8.1	1.64		2.0	1.5	Hydrothermal Infill Breccia
133	134	0.13	0.03	1.8	1.55		1.0		Hydrothermal Infill Breccia
134	135	0.48	0.12	10.8	1.52		1.0	0.3	Hydrothermal Infill Breccia
135	136	0.72	0.06	10.8	1.62		1.0	0.3	Hydrothermal Infill Breccia
136	137	0.97	0.10	14.1	2.35		1.0	3.0	Hydrothermal Infill Breccia
137	138	0.16	0.04	2.9	1.22		2.0	0.5	Diorite
138	139	0.30	0.09	5.9	1.66		2.0	1.5	Diorite
139	140	1.41	0.21	20.5	5.95		5.0	4.0	Hydrothermal Infill Breccia
140	141	1.66	0.36	24.7	4.60		5.0	5.0	Hydrothermal Infill Breccia
141	142	2.79	1.02	42.7	8.54		8.0	8.0	Hydrothermal Infill Breccia



From Depth m	To Depth m	Cu %	Au g/t	Ag g/t	Sulphur %	Chalcocite %	Pyrite Visual %	Chalco-pyrite Visual %	Lithology
142	143	0.47	0.05	7.6	1.87		1.0	3.0	Hydrothermal Infill Breccia
143	144	0.60	0.07	8.8	1.60		1.0	0.5	Hydrothermal Infill Breccia
144	145	0.27	0.10	4.1	2.05		2.0	0.5	Hydrothermal Infill Breccia
145	146	0.63	0.18	13.0	3.57		5.0	2.0	Hydrothermal Infill Breccia
146	147	1.83	0.31	30.4	6.36		5.0	4.0	Hydrothermal Infill Breccia
147	148	0.33	0.02	4.6	1.76		2.0	1.0	Hydrothermal Infill Breccia
148	149	0.29	0.03	4.5	1.81		0.5	0.5	Hydrothermal Infill Breccia
149	150	0.16	0.14	7.1	2.86		2.0	1.0	Hydrothermal Infill Breccia
150	151	0.90	0.25	14.1	3.47		3.0	5.0	Hydrothermal Infill Breccia
151	152	0.50	0.12	8.1	3.62		3.0	1.5	Hydrothermal Infill Breccia
152	153	0.23	0.04	3.5	2.00		2.0	2.0	Hydrothermal Infill Breccia
153	154	0.52	0.10	5.8	1.93		2.0	3.0	Hydrothermal Infill Breccia
154	155	1.10	0.31	15.8	3.63		5.0	6.0	Hydrothermal Infill Breccia
155	156	1.14	0.12	16.1	2.21		3.0	4.0	Hydrothermal Infill Breccia
156	157	0.74	0.12	11.8	2.33		1.0	2.0	Hydrothermal Infill Breccia
157	158	0.62	0.28	9.3	2.75		3.0	2.0	Hydrothermal Infill Breccia
158	159	0.29	0.27	6.1	1.50		2.0	3.0	Hydrothermal Infill Breccia
159	160	0.16	0.00	4.9	1.90		0.5	0.5	Hydrothermal Infill Breccia
160	161	0.84	0.47	12.8	3.68		2.0	3.0	Hydrothermal Infill Breccia
161	162	0.50	0.13	8.5	3.33		1.0	0.5	Hydrothermal Infill Breccia
162	163	0.33	0.11	6.2	2.28		1.0	0.5	Hydrothermal Infill Breccia
163	164	1.04	0.25	17.5	3.56		1.0	3.0	Hydrothermal Infill Breccia
164	165	1.32	0.24	22.4	3.59		2.0	3.0	Hydrothermal Infill Breccia
165	166	0.32	0.02	5.5	1.45		0.2	0.1	Hydrothermal Infill Breccia
166	167	0.72	0.84	20.9	3.83		2.0	3.0	Hydrothermal Infill Breccia



From Depth m	To Depth m	Cu %	Au g/t	Ag g/t	Sulphur %	Chalcocite %	Pyrite Visual %	Chalco- pyrite Visual %	Lithology
167	168	0.39	0.44	8.4	3.35		1.0	0.1	Hydrothermal Infill Breccia
168	169	0.46	0.09	10.6	2.62		2.0	0.5	Hydrothermal Infill Breccia
169	170	0.08	0.03	2.4	0.87		0.2	0.1	Hydrothermal Infill Breccia
170	171	0.15	0.04	4.3	0.97		1.0	0.1	Hydrothermal Infill Breccia
171	172	0.07	0.10	3.9	1.99		2.0	0.2	Hydrothermal Infill Breccia
172	173	0.25	0.20	10.6	2.24		1.0	0.5	Hydrothermal Infill Breccia
173	174	0.85	0.20	14.7	3.25		3.0	2.0	Hydrothermal Infill Breccia
174	175	4.03	0.60	49.6	7.18		3.0	10.0	Hydrothermal Infill Breccia
175	176	1.98	0.40	30.2	4.42		2.0	3.0	Hydrothermal Infill Breccia
176	177	0.65	0.12	10.3	2.68		2.0	1.0	Hydrothermal Infill Breccia
177	178	0.25	0.03	4.4	1.37		2.0	0.1	Hydrothermal Infill Breccia
178	179	0.12	0.01	2.5	0.87		1.0	0.2	Hydrothermal Infill Breccia
179	180	0.09	0.03	2.3	1.36		0.5	0.2	Hydrothermal Infill Breccia
180	181	0.24	1.23	23.4	1.95		3.0	0.5	Milled Breccia
181	182	0.08	0.11	3.6	2.98		3.0	0.2	Hydrothermal Infill Breccia
182	183	0.01	0.04	1.4	1.89		2.0	0.1	Hydrothermal Infill Breccia
183	184	0.08	0.21	8.7	3.02		2.0		Milled Breccia
184	185	0.05	0.38	7.3	6.29		3.0		Milled Breccia
185	186	0.06	0.13	2.8	3.09		2.0	0.1	Hydrothermal Infill Breccia
186	187	0.42	0.08	7.6	2.71		2.0	0.5	Hydrothermal Infill Breccia
187	188	1.56	0.31	43.9	6.37		2.0	5.0	Hydrothermal Infill Breccia
188	189	0.36	3.33	29.0	3.73		1.0	0.5	Milled Breccia
189	190	0.30	0.23	10.9	2.59		0.5		Hydrothermal Infill Breccia
190	191	0.10	0.03	3.7	1.28		0.5		Altered Porphyry
191	192	0.37	0.05	7.1	1.31		0.5		Altered Porphyry
192	193	0.51	0.08	6.7	1.75		1.0	0.5	Hydrothermal Infill Breccia
193	194	1.17	0.14	22.4	3.47		1.0	2.0	Hydrothermal Infill Breccia



From Depth m	To Depth m	Cu %	Au g/t	Ag g/t	Sulphur %	Chalcocite %	Pyrite Visual %	Chalco-pyrite Visual %	Lithology
194	195	0.61	0.07	8.8	1.34		1.0	2.0	Andesite Post Mineral Dyke
195	196	0.01	0.00	0.0	0.08				Andesite Post Mineral Dyke
196	197	0.01	0.00	0.0	0.11				Andesite Post Mineral Dyke
197	198	0.77	0.11	12.9	2.85				Andesite Post Mineral Dyke
198	199	1.14	0.12	16.2	4.92		2.0	3.0	Hydrothermal Infill Breccia
199	200	0.37	0.17	10.0	6.61		2.0	1.0	Hydrothermal Infill Breccia
200	201	0.68	0.17	13.0	2.90		2.0	1.0	Hydrothermal Infill Breccia
201	202	0.63	0.43	21.4	4.43		0.3		Fault/Crush Zone
202	203	1.33	0.80	31.4	3.99		1.0	3.0	Hydrothermal Infill Breccia
203	204	0.38	0.18	12.0	1.70		1.0	0.2	Hydrothermal Infill Breccia
204	205	0.37	0.24	8.7	2.19		2.0	0.1	Fault/Crush Zone
205	206	0.04	0.02	1.4	0.94		2.0	0.1	Fault/Crush Zone
206	207	0.18	0.07	4.9	1.45		1.0	0.1	Fault/Crush Zone
207	208	1.20	0.17	23.6	2.20		1.0	1.0	Hydrothermal Infill Breccia
208	209	0.33	0.05	6.8	1.19		2.0	2.0	Hydrothermal Infill Breccia
209	210	0.44	0.36	8.7	3.19		2.0	3.0	Hydrothermal Infill Breccia
210	211	0.15	0.16	7.2	1.72		2.0	1.0	Hydrothermal Infill Breccia
211	212	0.05	0.23	3.0	2.34		5.0	0.2	Hydrothermal Infill Breccia
212	213	0.09	0.04	3.4	0.72		0.5	0.2	Hydrothermal Infill Breccia
213	214	0.25	0.07	7.1	1.31		1.0	0.5	Hydrothermal Infill Breccia
214	215	0.20	0.07	4.9	0.94		2.0	0.5	Hydrothermal Infill Breccia
215	216	0.17	0.49	5.7	1.76		2.0	0.2	Hydrothermal Infill Breccia
216	217	0.14	0.10	4.3	1.09		1.0	0.2	Hydrothermal Infill Breccia
217	218	0.21	0.11	7.3	2.24		2.0	0.5	Hydrothermal Infill Breccia
218	219	0.06	0.38	1.9	3.97		0.5	0.1	Hydrothermal Infill Breccia
219	220	0.05	0.01	1.5	0.79		0.5		Hydrothermal Infill Breccia



From Depth m	To Depth m	Cu %	Au g/t	Ag g/t	Sulphur %	Chalcocite %	Pyrite Visual %	Chalco-pyrite Visual %	Lithology
220	221	0.05	0.17	1.9	0.81		0.5	0.1	Hydrothermal Infill Breccia
221	222	0.07	0.15	3.3	0.72		0.5	0.1	Hydrothermal Infill Breccia
222	223	0.04	0.02	1.1	0.53		1.0	0.1	Hydrothermal Infill Breccia
223	224	1.01	0.58	21.8	2.28		3.0	3.0	Hydrothermal Infill Breccia
224	225	0.43	0.70	7.5	1.84		5.0	3.0	Hydrothermal Infill Breccia
225	226	0.05	0.02	1.0	0.55		1.0	0.1	Hydrothermal Infill Breccia
226	227	1.85	0.32	39.7	8.43		2.0	4.0	Hydrothermal Infill Breccia
227	228	0.22	0.09	8.9	3.56		3.0	2.0	Hydrothermal Infill Breccia
228	229	0.97	0.16	16.0	2.16		1.0	1.0	Hydrothermal Infill Breccia
229	230	0.71	0.11	11.2	4.02		3.0	3.0	Hydrothermal Infill Breccia
230	231	0.98	0.13	20.8	1.98		1.0	3.0	Hydrothermal Infill Breccia
231	232	0.34	0.13	5.6	1.17		1.0	1.0	Hydrothermal Infill Breccia
232	233	0.67	0.37	16.4	2.39		1.0	4.0	Hydrothermal Infill Breccia
233	234	0.33	0.05	8.4	1.06		0.5	0.5	Hydrothermal Infill Breccia
234	235	0.08	0.02	1.8	0.88		0.5	0.1	Hydrothermal Infill Breccia
235	236	0.07	0.04	2.4	1.31		1.0	0.1	Hydrothermal Infill Breccia
236	237	0.04	0.07	1.9	1.54		3.0	0.3	Hydrothermal Infill Breccia
237	238	0.49	0.32	16.0	2.69		2.0	0.1	Hydrothermal Infill Breccia
238	239	0.32	0.03	4.7	2.46		2.0	1.0	Hydrothermal Infill Breccia
239	240	0.27	0.26	5.5	2.20		2.0	0.5	Hydrothermal Infill Breccia
240	241	0.47	0.58	9.9	1.53		3.0	1.5	Hydrothermal Infill Breccia
241	242	0.22	0.22	4.9	1.54		3.0	1.5	Hydrothermal Infill Breccia
242	243	0.13	1.34	8.7	3.39		3.0	0.2	Hydrothermal Infill Breccia
243	244	0.22	0.11	9.8	2.24		2.0	0.1	Hydrothermal Infill Breccia
244	245	0.04	0.03	3.0	0.74		1.0		Altered Porphyry
245	246	0.05	0.05	3.1	0.82		1.0		Altered Porphyry



From Depth m	To Depth m	Cu %	Au g/t	Ag g/t	Sulphur %	Chalcocite %	Pyrite Visual %	Chalco-pyrite Visual %	Lithology
246	247	0.06	0.05	2.7	0.76		1.0		Altered Porphyry
247	248	0.06	0.03	3.5	0.68		1.0		Altered Porphyry
248	249	0.12	0.03	2.9	0.73		1.0		Altered Porphyry
249	250	0.13	0.05	1.5	0.81		1.0		Altered Porphyry
250	251	0.13	0.03	2.9	0.44		1.0	0.1	Altered Porphyry
251	252	0.12	0.04	2.5	0.58		1.0	0.1	Diorite
252	253	0.99	0.25	20.1	2.54		2.0	2.0	Hydrothermal Infill Breccia
253	254	2.50	0.54	32.1	6.11		2.0	8.0	Hydrothermal Infill Breccia
254	255	1.67	0.25	21.7	5.78		2.0	4.0	Hydrothermal Infill Breccia
255	256	0.38	0.14	7.2	2.69		3.0	4.0	Hydrothermal Infill Breccia
256	257	1.30	1.41	20.7	6.03		2.0	3.0	Hydrothermal Infill Breccia
257	258	1.03	0.14	18.9	5.64		3.0	5.0	Hydrothermal Infill Breccia
258	259	0.88	0.21	14.6	5.07		3.0	4.0	Hydrothermal Infill Breccia
259	260	3.05	0.40	33.0	6.17		3.0	5.0	Hydrothermal Infill Breccia
260	261	0.72	0.08	8.6	1.82		2.0	3.0	Hydrothermal Infill Breccia
261	262	1.47	0.16	15.6	2.82		1.0	4.0	Hydrothermal Infill Breccia
262	263	2.12	0.33	28.5	6.78		3.0	8.0	Hydrothermal Infill Breccia
263	264	0.08	0.03	5.2	1.74		0.5	0.5	Hydrothermal Infill Breccia
264	265	2.61	0.27	38.9	8.22		3.0	5.0	Hydrothermal Infill Breccia
265	266	0.71	0.12	28.2	4.82		4.0	5.0	Hydrothermal Infill Breccia
266	267	0.81	0.04	11.0	1.60		2.0	2.0	Hydrothermal Infill Breccia
267	268	2.72	0.36	53.8	6.16		4.0	5.0	Hydrothermal Infill Breccia
268	269	0.67	0.31	15.1	4.33		2.0	2.0	Hydrothermal Infill Breccia
269	270	1.20	0.19	16.9	3.13		3.0	4.0	Hydrothermal Infill Breccia
270	271	0.96	0.11	14.8	4.29		1.0	4.0	Hydrothermal Infill Breccia
271	272	1.32	0.18	16.2	3.15		2.0	4.0	Hydrothermal Infill Breccia
272	273	1.09	0.09	12.0	2.68		2.0	3.0	Hydrothermal Infill Breccia



From Depth m	To Depth m	Cu %	Au g/t	Ag g/t	Sulphur %	Chalcocite %	Pyrite Visual %	Chalco-pyrite Visual %	Lithology
273	274	1.58	0.40	24.8	5.61		5.0	8.0	Hydrothermal Infill Breccia
274	275	0.98	0.12	14.4	3.00		0.5	5.0	Hydrothermal Infill Breccia
275	276	0.16	0.05	3.4	1.11		0.5	0.5	Hydrothermal Infill Breccia
276	277	1.04	0.19	19.5	4.79		3.0	2.0	Hydrothermal Infill Breccia
277	278	0.45	0.08	4.4	1.26		4.0	4.0	Hydrothermal Infill Breccia
278	279	2.65	0.70	40.5	5.88		5.0	10.0	Hydrothermal Infill Breccia
279	280	0.60	0.06	12.1	2.87		4.0	5.0	Hydrothermal Infill Breccia
280	281	0.78	0.09	8.0	2.50		5.0	8.0	Hydrothermal Infill Breccia
281	282	2.60	0.44	25.6	7.77		2.0	2.0	Hydrothermal Infill Breccia
282	283	2.72	0.38	24.5	5.97		2.0	8.0	Hydrothermal Infill Breccia
283	284	1.85	0.19	16.6	3.30		2.0	5.0	Hydrothermal Infill Breccia
284	285	1.14	0.19	13.0	2.14		2.0	4.0	Hydrothermal Infill Breccia
285	286	0.62	0.06	7.0	1.91		1.5	1.5	Hydrothermal Infill Breccia
286	287	0.92	0.10	9.0	4.25		2.0	3.0	Hydrothermal Infill Breccia
287	288	0.90	0.15	9.5	2.77		1.0	3.0	Hydrothermal Infill Breccia
288	289	1.20	0.16	13.1	4.20		1.0	2.0	Hydrothermal Infill Breccia
289	290	0.80	0.09	8.4	2.78		1.0	2.0	Hydrothermal Infill Breccia
290	291	0.57	0.06	5.5	1.62		2.0	3.0	Hydrothermal Infill Breccia
291	292	2.42	0.47	30.1	7.08		2.0	8.0	Hydrothermal Infill Breccia
292	293	1.29	0.17	17.9	4.64		3.0	8.0	Hydrothermal Infill Breccia
293	294	1.90	0.32	21.5	6.09		3.0	5.0	Hydrothermal Infill Breccia
294	295	2.56	1.12	71.4	6.97		3.0	5.0	Hydrothermal Infill Breccia
295	296	1.86	0.42	24.1	6.56		2.0	3.0	Hydrothermal Infill Breccia
296	297	0.52	0.08	9.4	2.48		3.0	2.0	Hydrothermal Infill Breccia
297	298	0.82	0.11	12.6	2.28		3.0	2.0	Hydrothermal Infill Breccia

From Depth m	To Depth m	Cu %	Au g/t	Ag g/t	Sulphur %	Chalcocite %	Pyrite Visual %	Chalco-pyrite Visual %	Lithology
298	299	1.79	0.31	17.9	6.31		3.0	4.0	Hydrothermal Infill Breccia
299	300	1.28	0.21	12.4	3.95		5.0	3.0	Hydrothermal Infill Breccia
300	301	1.89	0.39	17.8	5.81		3.0	5.0	Hydrothermal Infill Breccia
301	302	1.09	0.21	9.4	5.18		3.0	3.0	Hydrothermal Infill Breccia
302	303	0.33	0.09	3.7	1.93		2.0	2.0	Hydrothermal Infill Breccia
303	304	0.01	0.00	0.0	0.06				Andesite Post Mineral Dyke
304	305	0.00	0.00	0.0	0.04				Andesite Post Mineral Dyke
305	306	0.00	0.00	0.0	0.03				Andesite Post Mineral Dyke
306	307	0.00	0.00	0.0	0.02				Andesite Post Mineral Dyke
307	308	0.00	0.00	0.0	0.03				Andesite Post Mineral Dyke
308	309	0.00	0.00	0.0	0.07				Andesite Post Mineral Dyke
309	310	0.00	0.00	0.6	0.01				Andesite Post Mineral Dyke
310	311	0.00	0.00	0.0	0.02				Andesite Post Mineral Dyke
311	312	0.00	0.00	0.0	0.13				Andesite Post Mineral Dyke
312	313	0.45	0.07	4.4	1.52		0.2	0.5	Hydrothermal Infill Breccia
313	314	0.67	0.10	6.9	2.23		3.0	3.0	Hydrothermal Infill Breccia
314	315	1.38	0.18	13.3	3.76		5.0	5.0	Hydrothermal Infill Breccia
315	316	1.73	0.61	15.2	5.24		2.0	6.0	Hydrothermal Infill Breccia
Note intervals and assays beyond 316m depth are outside of the mineralised envelope which bounds current (2011) resource estimate. Assays above 316m depth are within the bounding envelope but not necessarily contained within the current resource blocks..									
316	317	0.72	0.10	6.7	4.39		4.0	4.0	Hydrothermal Infill Breccia
317	318	0.33	0.05	3.5	1.40		3.0	3.0	Hydrothermal Infill Breccia
318	319	0.01	0.01	0.0	0.56				Andesite Post Mineral Dyke
319	320	0.02	0.05	0.0	0.49				Andesite Post Mineral Dyke
320	321	0.02	0.01	0.0	0.75				Andesite Post Mineral Dyke



From Depth m	To Depth m	Cu %	Au g/t	Ag g/t	Sulphur %	Chalcocite %	Pyrite Visual %	Chalco- pyrite Visual %	Lithology
321	322	0.63	0.10	8.0	4.00		2.0	2.0	Hydrothermal Infill Breccia
322	323	1.32	0.12	15.2	2.63		3.0	2.0	Hydrothermal Infill Breccia
323	324	0.93	0.17	12.3	3.40		2.0	2.0	Hydrothermal Infill Breccia
324	325	1.55	0.34	14.0	3.26		3.0	4.0	Hydrothermal Infill Breccia
325	326	0.54	0.94	5.0	1.59		0.5	1.0	Hydrothermal Infill Breccia
326	327	1.93	0.54	18.7	7.38		4.0	4.0	Hydrothermal Infill Breccia
327	328	1.67	0.17	14.8	3.63		2.0	3.0	Hydrothermal Infill Breccia
328	329	0.65	0.07	7.1	1.73		1.0	1.0	Hydrothermal Infill Breccia
329	330	0.80	0.13	8.0	2.61		2.0	3.0	Hydrothermal Infill Breccia
330	331	1.00	0.17	12.8	4.47		4.0	4.0	Hydrothermal Infill Breccia
331	332	0.47	0.10	6.9	4.99		2.0	2.0	Hydrothermal Infill Breccia
332	333	2.06	0.76	20.3	7.06		4.0	5.0	Hydrothermal Infill Breccia
333	334	2.29	0.48	21.8	3.37		3.0	8.0	Hydrothermal Infill Breccia
334	335	1.43	0.27	13.2	2.87		2.0	5.0	Hydrothermal Infill Breccia
335	336	0.03	0.01	0.0	0.13				Andesite Post Mineral Dyke
336	337	0.01	0.00	0.0	0.03				Andesite Post Mineral Dyke
337	338	0.01	0.00	0.0	0.03				Andesite Post Mineral Dyke
338	339	0.00	0.00	0.0	0.01				Andesite Post Mineral Dyke
339	340	0.00	0.00	0.0	0.01				Andesite Post Mineral Dyke
340	341	2.90	0.35	35.3	7.29		3.0	5.0	Hydrothermal Infill Breccia
341	342	0.59	0.07	5.2	1.36		0.5	1.0	Hornfels
342	343	0.89	0.12	8.8	1.81		1.0	2.0	Hydrothermal Infill Breccia
343	344	1.34	0.28	14.3	3.81		2.0	3.0	Hydrothermal Infill Breccia
344	345	1.84	0.46	19.0	3.67		2.0	3.0	Hydrothermal Infill Breccia
345	346	1.90	0.35	48.2	7.58		3.0	4.0	Hydrothermal Infill Breccia



From Depth m	To Depth m	Cu %	Au g/t	Ag g/t	Sulphur %	Chalcocite %	Pyrite Visual %	Chalco- pyrite Visual %	Lithology
346	347	2.45	0.43	28.2	4.57		3.0	4.0	Hydrothermal Infill Breccia
347	348	1.81	0.32	20.1	3.85		3.0	4.0	Hydrothermal Infill Breccia
348	349	2.09	0.47	23.6	4.42		3.0	10.0	Hydrothermal Infill Breccia
349	350	2.59	0.73	32.1	5.54		3.0	5.0	Hydrothermal Infill Breccia
350	351	3.10	0.62	34.4	5.72		3.0	8.0	Hydrothermal Infill Breccia
351	352	1.63	0.24	18.1	2.46				Hydrothermal Infill Breccia
352	353	0.02	0.01	0.0	0.24				Andesite Post Mineral Dyke
353	354	0.01	0.00	0.0	0.02				Andesite Post Mineral Dyke
354	355	0.01	0.00	0.0	0.01				Andesite Post Mineral Dyke
355	356	0.00	0.00	0.0	0.01				Andesite Post Mineral Dyke
356	357	0.00	0.00	0.0	0.02				Andesite Post Mineral Dyke
357	358	0.00	0.00	0.0	0.08				Andesite Post Mineral Dyke
358	359	0.00	0.00	0.0	0.13				Andesite Post Mineral Dyke
359	360	0.02	0.01	0.0	0.24		0.2	0.2	Andesite Post Mineral Dyke
360	361	0.90	0.18	11.2	2.31		1.0	5.0	Hydrothermal Infill Breccia
361	362	0.02	0.01	0.0	0.80		0.3		Hornfels
362	363	0.02	0.01	0.0	0.44		0.3		Hornfels
363	364	1.51	0.26	14.6	2.36		1.0	2.0	Hornfels
364	365	6.05	0.64	61.8	7.65		5.0	10.0	Hydrothermal Infill Breccia
365	366	4.24	0.51	43.2	5.92		5.0	8.0	Hydrothermal Infill Breccia
366	367	4.70	4.17	48.4	6.49		5.0	8.0	Hydrothermal Infill Breccia
367	368	0.66	0.10	7.3	1.20		0.5	0.5	Hornfels
368	369	1.04	0.18	15.1	3.12		2.0	3.0	Hydrothermal Infill Breccia
369	370	0.53	0.05	5.0	2.73		3.0	3.0	Hydrothermal Infill Breccia
370	371	0.35	0.06	7.2	4.03		8.0	0.3	Hydrothermal Infill Breccia
371	372	0.39	0.07	4.0	1.80		2.0	3.0	Hydrothermal Infill Breccia



From Depth m	To Depth m	Cu %	Au g/t	Ag g/t	Sulphur %	Chalcocite %	Pyrite Visual %	Chalco-pyrite Visual %	Lithology
372	373	0.00	0.00	0.0	0.07				Andesite Post Mineral Dyke
373	374	0.24	0.06	3.2	0.88		0.5	1.0	Andesite Post Mineral Dyke
374	375	0.32	0.16	5.3	1.86		1.0	1.0	Hydrothermal Infill Breccia
375	376	0.24	0.21	5.5	1.69		2.0	2.0	Hydrothermal Infill Breccia
376	377	0.53	0.15	6.3	2.43		2.0	1.0	Hydrothermal Infill Breccia
377	378	0.73	0.07	6.6	1.89		1.0	0.5	Hydrothermal Infill Breccia
378	379	0.54	0.07	5.7	1.79		1.5	2.0	Hydrothermal Infill Breccia
379	380	1.14	0.11	9.2	1.87		1.0	1.5	Hydrothermal Infill Breccia
380	381	1.18	0.55	13.9	2.82		2.0	4.0	Hydrothermal Infill Breccia
381	382	0.56	0.06	7.9	3.13		2.0	1.0	Hydrothermal Infill Breccia
382	383	1.80	0.21	18.6	3.43		3.0	5.0	Hydrothermal Infill Breccia
383	384	0.91	0.12	9.0	3.11		2.0	1.5	Hydrothermal Infill Breccia
384	385	0.56	0.42	6.2	2.83		2.0	1.5	Hydrothermal Infill Breccia
385	386	1.23	0.27	14.0	4.23		3.0	2.0	Hydrothermal Infill Breccia
386	387	1.14	0.20	13.1	3.60		3.0	5.0	Hydrothermal Infill Breccia
387	388	0.03	0.01	0.0	0.26		0.1	0.1	Hornfels
388	389	0.04	0.01	0.8	0.67		0.1	0.1	Hornfels
389	390	0.40	0.04	3.8	1.03		0.5	0.5	Hydrothermal Infill Breccia
390	391	1.08	0.46	10.7	3.42		2.0	2.5	Hydrothermal Infill Breccia
391	392	0.13	0.03	1.5	0.69		0.2	0.2	Hydrothermal Infill Breccia
392	393	0.09	0.01	1.2	0.72		0.2	0.1	Hydrothermal Infill Breccia
393	394	0.16	0.01	2	0.81		0.2	0.5	Hydrothermal Infill Breccia
394	395	0.43	0.03	2.6	1.47		0.2	0.5	Hydrothermal Infill Breccia
395	396	0.45	0.12	11.2	4.36		3.0	1.0	Hydrothermal Infill Breccia
396	397	0.66	0.08	5	1.73		2.0	2.0	Hydrothermal Infill Breccia
397	398	0.85	0.11	5.5	1.47		1.0	3.0	Hydrothermal Infill Breccia



From Depth m	To Depth m	Cu %	Au g/t	Ag g/t	Sulphur %	Chalcocite %	Pyrite Visual %	Chalco- pyrite Visual %	Lithology
398	399	0.26	0.02	1.9	1.64		3.0	2.0	Hydrothermal Infill Breccia
399	400	0.44	0.05	2.2	0.87		0.5	1.0	Hydrothermal Infill Breccia
400	401	0.00	0.00	0	0.11				Andesite Post Mineral Dyke
401	402	0.00	0.00	0	0.08				Andesite Post Mineral Dyke
402	403	0.00	0.00	0	0.04				Andesite Post Mineral Dyke
403	404	0.00	0.00	0	0.03				Andesite Post Mineral Dyke
404	405	0.00	0.00	0	0.05				Andesite Post Mineral Dyke
405	406	0.00	0.00	0	0.06				Andesite Post Mineral Dyke
406	407	0.00	0.00	0	0.06				Andesite Post Mineral Dyke
407	408	0.00	0.00	0	0.10				Andesite Post Mineral Dyke
408	409	0.54	0.12	3.6	1.22			1.0	Hydrothermal Infill Breccia
409	410	0.01	0.01	0	1.93		2.0	0.1	Hydrothermal Infill Breccia
410	411	0.00	0.00	0	0.14				Andesite Post Mineral Dyke
411	412	0.00	0.00	0	0.05				Andesite Post Mineral Dyke
412	413	0.00	0.00	0	0.04				Andesite Post Mineral Dyke
413	414	0.00	0.00	0	0.06				Andesite Post Mineral Dyke
414	415	0.00	0.00	0	0.08				Andesite Post Mineral Dyke
415	416	0.00	0.00	0	0.08				Andesite Post Mineral Dyke
416	417	0.00	0.00	0	0.09				Andesite Post Mineral Dyke
417	418	0.00	0.00	0	0.19				Andesite Post Mineral Dyke
418	419	0.00	0.00	0	0.06				Andesite Post Mineral Dyke
419	420	0.00	0.00	0	0.04				Andesite Post Mineral Dyke
420	421	0.00	0.00	0	0.06				Andesite Post Mineral Dyke
421	422	0.01	0.00	0	0.15				Andesite Post Mineral Dyke
422	423	0.07	0.02	1.4	0.98		1.0	0.2	Hydrothermal Infill Breccia



From Depth m	To Depth m	Cu %	Au g/t	Ag g/t	Sulphur %	Chalcocite %	Pyrite Visual %	Chalco-pyrite Visual %	Lithology
423	424	0.06	0.00	1.1	0.34		1.0	0.3	Hydrothermal Infill Breccia
424	425	0.55	0.13	11.5	6.45		10.0	2.0	Hydrothermal Infill Breccia
425	426	0.36	0.03	5.5	1.39		2.0	1.0	Hydrothermal Infill Breccia
426	427	0.41	0.02	6	2.50		3.0	3.0	Hydrothermal Infill Breccia
427	428	0.32	0.10	4.2	2.25		3.0	1.0	Hydrothermal Infill Breccia
428	429	1.41	0.33	18.6	9.41		5.0	6.0	Hydrothermal Infill Breccia
429	430	1.33	0.21	14.7	4.17		3.0	5.0	Hydrothermal Infill Breccia
430	431	0.80	0.12	8.4	1.30		0.5	2.0	Andesite Post Mineral Dyke
431	432	0.01	0.00	0	0.23				Andesite Post Mineral Dyke
432	433	0.67	0.14	13.3	4.28		5.0	4.0	Hydrothermal Infill Breccia
433	434	0.32	0.15	6.1	3.37		3.0	1.0	Hydrothermal Infill Breccia
434	435	0.26	0.04	4.1	1.35		2.0	1.0	Hydrothermal Infill Breccia
435	436	0.51	0.07	8.1	2.29		3.0	3.0	Hydrothermal Infill Breccia
436	437	0.52	0.17	9.9	5.14		3.0	3.0	Hydrothermal Infill Breccia
437	438	0.19	0.05	3.2	2.45		3.0	1.0	Hydrothermal Infill Breccia
438	439	0.25	0.04	2.5	1.24		2.0	1.0	Hydrothermal Infill Breccia
439	440	0.44	0.10	7.3	2.14		2.0	1.0	Hydrothermal Infill Breccia
440	441	0.65	0.13	8.1	2.45		2.0	3.0	Hydrothermal Infill Breccia
441	442	0.29	0.11	4.6	3.59		3.0	2.0	Hydrothermal Infill Breccia
442	443	0.93	0.14	17	5.53		3.0	3.0	Hydrothermal Infill Breccia
443	444	0.57	0.08	10.9	9.08		3.0	3.0	Hydrothermal Infill Breccia
444	445	0.10	0.03	2.9	2.51				Andesite Post Mineral Dyke
445	446	0.00	0.00	0	0.06				Andesite Post Mineral Dyke
446	447	0.00	0.00	0	0.10				Andesite Post Mineral Dyke
447	448	0.05	0.01	1.1	1.52		2.0	0.5	Hydrothermal Infill Breccia



From Depth m	To Depth m	Cu %	Au g/t	Ag g/t	Sulphur %	Chalcocite %	Pyrite Visual %	Chalco-pyrite Visual %	Lithology
448	449	0.32	0.06	3.6	1.58		2.0	1.0	Hydrothermal Infill Breccia
449	450	0.29	0.06	3.2	3.59		3.0	1.0	Hydrothermal Infill Breccia
450	451	0.63	0.07	7.1	2.57		3.0	2.0	Hydrothermal Infill Breccia
451	452	0.56	0.11	12.8	3.11		3.0	2.0	Hydrothermal Infill Breccia
452	453	0.59	0.11	6	4.30		3.0	2.0	Hydrothermal Infill Breccia
453	454	1.22	0.17	13.6	3.25		3.0	3.0	Hydrothermal Infill Breccia
454	455	0.35	0.02	4.2	0.79			1.0	Andesite Post Mineral Dyke
455	456	0.75	0.09	9.8	3.52		3.0	2.0	Hydrothermal Infill Breccia
456	457	0.91	0.16	9.2	2.68		3.0	3.0	Hydrothermal Infill Breccia
457	458	0.73	0.13	5.7	2.06		3.0	2.0	Hydrothermal Infill Breccia
458	459	0.88	0.31	9.8	2.81		3.0	3.0	Hydrothermal Infill Breccia
459	460	0.19	0.05	1.9	1.29		3.0	1.0	Hydrothermal Infill Breccia
460	461	0.00	0.00	0	0.08				Andesite Post Mineral Dyke
461	462	0.00	0.00	0	0.04				Andesite Post Mineral Dyke
462	463	0.00	0.00	0	0.09				Andesite Post Mineral Dyke
463	464	1.56	0.33	14.4	1.98		1.0	3.0	Andesite Post Mineral Dyke
464	465	0.81	0.14	7.8	2.31		2.0	2.0	Hydrothermal Infill Breccia
465	466	0.05	0.01	0.6	1.13		2.0	0.5	Hydrothermal Infill Breccia
466	467	0.13	0.04	1.3	2.56		2.0	0.3	Hydrothermal Infill Breccia
467	468	0.04	0.01	0.7	3.15		3.0	0.3	Hydrothermal Infill Breccia
468	469	0.70	0.21	8.4	2.90		3.0	3.0	Hydrothermal Infill Breccia
469	470	0.03	0.03	0.7	3.10		2.0	0.3	Hydrothermal Infill Breccia
470	471	0.25	0.06	2.4	2.99		2.0	1.0	Hydrothermal Infill Breccia
471	472	0.73	0.25	8.2	2.56		2.0	3.0	Hydrothermal Infill Breccia
472	473	0.29	0.08	3.6	1.53		3.0	1.5	Hydrothermal Infill Breccia



From Depth m	To Depth m	Cu %	Au g/t	Ag g/t	Sulphur %	Chalcocite %	Pyrite Visual %	Chalco- pyrite Visual %	Lithology
473	474	0.20	0.04	1.6	1.63		3.0	1.0	Hydrothermal Infill Breccia
474	475	0.07	0.03	1.3	2.62		3.0	0.2	Hydrothermal Infill Breccia
475	476	0.02	0.05	1	3.94		5.0	0.2	Hydrothermal Infill Breccia
476	477	0.04	0.03	1	4.25		5.0	0.2	Hydrothermal Infill Breccia
477	478	0.02	0.01	0.5	2.22		3.0	0.2	Hydrothermal Infill Breccia
478	479	0.17	0.03	2.1	3.14		3.0	0.3	Hydrothermal Infill Breccia
479	480	0.04	0.02	0.6	3.63		3.0	0.2	Hydrothermal Infill Breccia
480	481	0.01	0.01	0.7	5.48		3.0	0.2	Hydrothermal Infill Breccia
481	482	0.01	0.01	0	7.90		5.0	0.2	Hydrothermal Infill Breccia
482	483	0.01	0.01	0	6.23		5.0	0.2	Hydrothermal Infill Breccia
483	484	0.02	0.01	0.9	7.60		5.0	0.2	Hydrothermal Infill Breccia
484	485	0.02	0.01	0.8	4.15		5.0	0.2	Hydrothermal Infill Breccia
485	486	0.05	0.01	1.3	1.13		3.0	0.2	Hydrothermal Infill Breccia
486	487	0.23	0.10	5.2	4.75		3.0	0.5	Hydrothermal Infill Breccia
487	488	1.97	0.34	31.3	6.11		3.0	4.0	Hydrothermal Infill Breccia
488	489	0.03	0.00	0.6	1.60		3.0	0.2	Hydrothermal Infill Breccia
489	490	0.03	0.01	0	1.66		3.0	0.2	Hydrothermal Infill Breccia
490	491	0.03	0.01	0	8.64		10.0	0.2	Hydrothermal Infill Breccia
491	492	0.02	0.01	0	3.91		3.0	0.2	Hydrothermal Infill Breccia
492	493	0.10	0.02	1.1	7.33		10.0	0.5	Hydrothermal Infill Breccia
493	494	0.06	0.01	0.7	6.24		10.0	0.1	Hydrothermal Infill Breccia
494	495	0.10	0.01	0.9	3.17		3.0	0.1	Hydrothermal Infill Breccia
495	496	0.11	0.03	1	7.14		3.0	0.2	Hydrothermal Infill Breccia
496	497	0.03	0.01	0	3.32		2.0	0.2	Hydrothermal Infill Breccia
497	498	0.47	0.06	3.4	7.64		10.0	0.2	Hydrothermal Infill Breccia



From Depth m	To Depth m	Cu %	Au g/t	Ag g/t	Sulphur %	Chalcocite %	Pyrite Visual %	Chalco- pyrite Visual %	Lithology
498	499	0.07	0.01	0.8	2.12		2.0	0.2	Hydrothermal Infill Breccia
499	500	0.05	0.01	0.6	2.44		2.0	0.2	Hydrothermal Infill Breccia
500	501	0.12	0.02	1.2	1.98		2.0	0.2	Hydrothermal Infill Breccia
501	502	0.12	0.02	1.1	2.60		2.0	0.2	Hydrothermal Infill Breccia
502	503	0.06	0.01	0.6	1.57		2.0	0.2	Hydrothermal Infill Breccia
503	504	0.10	0.04	1	5.03		5.0	0.2	Hydrothermal Infill Breccia
504	505	0.13	0.02	1.5	4.96		5.0	0.2	Hydrothermal Infill Breccia
505	506	0.04	0.01	0.5	6.04		5.0	0.2	Hydrothermal Infill Breccia
506	507	0.04	0.01	0.6	7.05		5.0	0.1	Hydrothermal Infill Breccia
507	508	0.06	0.01	1	1.61		1.0	0.1	Hydrothermal Infill Breccia
508	509	0.08	0.28	3.7	1.54		2.0	0.1	Andesite Post Mineral Dyke
509	510	0.05	0.01	1.4	2.00		3.0	1.0	Hydrothermal Infill Breccia
510	511	0.04	0.01	1.5	2.52		2.0	0.5	Hydrothermal Infill Breccia
511	512	0.04	0.01	1.3	2.88		2.0	0.5	Hydrothermal Infill Breccia
512	513	0.20	0.02	3.1	4.07		3.0	1.0	Hydrothermal Infill Breccia
513	514	0.49	0.05	10.3	4.67		3.0	1.0	Hydrothermal Infill Breccia
514	515	0.45	0.06	6.6	1.60		3.0	1.0	Hydrothermal Infill Breccia
515	516	0.00	0.00	0	0.03				Andesite Post Mineral Dyke
516	517	0.00	0.00	0	0.18				Andesite Post Mineral Dyke
517	518	0.00	0.01	0	0.10				Andesite Post Mineral Dyke
518	519	0.00	0.00	0	0.08				Andesite Post Mineral Dyke
519	520	0.00	0.00	0	0.06				Andesite Post Mineral Dyke
520	521	0.00	0.01	0	0.03				Andesite Post Mineral Dyke
521	522	0.00	0.00	0	0.02				Andesite Post Mineral Dyke
522	523	0.00	0.00	0	0.18				Andesite Post Mineral Dyke



From Depth m	To Depth m	Cu %	Au g/t	Ag g/t	Sulphur %	Chalcocite %	Pyrite Visual %	Chalco- pyrite Visual %	Lithology
523	524	0.10	1.40	4.1	0.87				Andesite Post Mineral Dyke
524	525	0.17	0.04	6.6	4.00		3.0	0.5	Hydrothermal Infill Breccia
525	526	0.24	0.04	10.6	7.08		10.0	0.5	Hydrothermal Infill Breccia
526	527	0.71	0.07	11.6	3.17		3.0	1.0	Hydrothermal Infill Breccia
527	528	0.10	0.02	4.2	2.01		3.0	0.5	Hydrothermal Infill Breccia
528	529	0.42	0.18	17.6	9.27		10.0	0.5	Hydrothermal Infill Breccia
529	530	0.39	0.19	14.4	4.00		5.0	1.0	Hydrothermal Infill Breccia
530	531	0.22	0.29	14.1	3.08		3.0	0.5	Hydrothermal Infill Breccia
531	532	0.07	0.01	3.4	1.66		2.0	0.1	Hydrothermal Infill Breccia
532	533	0.07	0.05	2.3	1.86		2.0	0.1	Hydrothermal Infill Breccia
533	534	0.21	0.04	4.2	2.35		3.0	0.1	Hydrothermal Infill Breccia
534	535	0.07	0.01	1.3	4.22		3.0	0.5	Hydrothermal Infill Breccia
535	536	0.00	0.00	0	0.21				Andesite Post Mineral Dyke
536	537	0.04	0.01	1.1	0.43				Andesite Post Mineral Dyke
537	538	0.00	0.01	0	0.14				Andesite Post Mineral Dyke
538	539	0.00	0.00	0	0.13				Andesite Post Mineral Dyke
539	540	0.00	0.00	0	0.05				Andesite Post Mineral Dyke
540	541	0.00	0.00	0	0.06				Andesite Post Mineral Dyke
541	542	0.00	0.00	0	0.04				Andesite Post Mineral Dyke
542	543	0.00	0.00	0	0.16				Andesite Post Mineral Dyke
543	544	0.00	0.01	3.5	0.21				Andesite Post Mineral Dyke
544	545	0.34	1.08	18.8	3.32		3.0	0.5	Hydrothermal Infill Breccia
545	546	0.45	1.66	14.1	4.93		5.0	1.0	Hydrothermal Infill Breccia
546	547	0.08	0.03	1.2	2.16		1.0	0.1	Hornfels
547	548	0.34	0.06	3.5	1.31		1.0	0.5	Hydrothermal Infill Breccia



From Depth m	To Depth m	Cu %	Au g/t	Ag g/t	Sulphur %	Chalcocite %	Pyrite Visual %	Chalco- pyrite Visual %	Lithology
548	549	0.12	0.03	1.3	0.87		0.5	0.1	Andesite Post Mineral Dyke
549	550	0.03	0.01	1.4	1.53		1.0	0.5	Hydrothermal Infill Breccia
550	551	0.16	0.03	1.7	1.90		1.0	0.1	Hydrothermal Infill Breccia
551	552	0.01	0.01	0.5	1.77		1.0	0.1	Hydrothermal Infill Breccia
552	553	0.02	0.00	0	0.31				Andesite Post Mineral Dyke
553	554	0.00	0.00	0	0.08				Andesite Post Mineral Dyke
554	555	0.00	0.00	0	0.02				Andesite Post Mineral Dyke
555	556	0.00	0.00	0	0.11				Andesite Post Mineral Dyke
556	557	0.05	0.10	2.7	0.88		0.5	0.2	Hydrothermal Infill Breccia
557	558	0.06	0.04	1.5	1.25		1.0	0.2	Hydrothermal Infill Breccia
558	559	0.02	0.00	1.5	1.01		1.0	0.2	Hydrothermal Infill Breccia
559	560	0.01	0.00	0.8	2.96		3.0	0.2	Hydrothermal Infill Breccia
560	561	0.22	0.02	4.8	2.00		1.0	0.5	Hydrothermal Infill Breccia
561	562	0.06	0.01	3	0.97		1.0	0.5	Hydrothermal Infill Breccia
562	563	0.02	0.01	0.7	0.81		1.0	0.1	Hydrothermal Infill Breccia
563	564	0.03	0.75	1.9	2.43		1.0	0.1	Hydrothermal Infill Breccia
564	565	0.02	0.01	0.8	1.48		1.0	0.1	Hydrothermal Infill Breccia
565	566	0.05	0.01	2.7	2.12		1.0	0.1	Hydrothermal Infill Breccia
566	567	0.05	0.14	2.2	1.60		0.5	0.1	Hydrothermal Infill Breccia
567	568	0.37	8.31	24.6	6.65		8.0	0.1	Hydrothermal Infill Breccia
568	569	0.03	0.69	9.8	3.65		3.0	0.1	Andesite Post Mineral Dyke
569	570	0.11	1.84	7.9	3.85		3.0	0.1	Hydrothermal Infill Breccia
570	571	0.05	0.15	3.2	2.22		3.0	0.2	Hydrothermal Infill Breccia
571	572	0.35	2.66	13.7	4.92		5.0	0.2	Hydrothermal Infill Breccia
572	573	0.24	1.76	7.4	2.02		2.0	0.1	Hydrothermal Infill Breccia



From Depth m	To Depth m	Cu %	Au g/t	Ag g/t	Sulphur %	Chalcocite %	Pyrite Visual %	Chalco- pyrite Visual %	Lithology
573	574	0.06	0.02	1.6	1.25		2.0	0.1	Hydrothermal Infill Breccia
574	575	0.06	0.52	3.1	3.21		3.0	0.1	Hydrothermal Infill Breccia
575	576	0.28	4.51	11.2	5.44		3.0	0.1	Hydrothermal Infill Breccia
576	577	0.39	10.53	44	8.62		10.0	0.2	Hydrothermal Infill Breccia
577	578	0.40	6.43	22.2	9.18		10.0	0.2	Hydrothermal Infill Breccia
578	579	0.03	0.02	1.6	0.59		2.0	0.1	Hydrothermal Infill Breccia
579	580	0.02	0.01	0.5	0.24		0.5		Hydrothermal Infill Breccia
580	581	0.16	0.01	2.7	0.75		2.0	0.5	Hydrothermal Infill Breccia
581	582	0.03	0.01	0.8	0.91		2.0	0.1	Hydrothermal Infill Breccia
582	583	0.03	0.01	3.1	1.20		2.0	0.1	Hydrothermal Infill Breccia
583	584	0.02	0.01	0.7	1.13		2.0	0.1	Hydrothermal Infill Breccia
584	585	0.12	0.00	1.9	0.53		2.0	0.1	Hydrothermal Infill Breccia
585	586	0.23	0.02	4.6	2.15		2.0	0.5	Hydrothermal Infill Breccia
586	587	1.12	0.09	31.3	2.43		2.0	2.0	Hydrothermal Infill Breccia
587	588	0.06	0.04	2	1.72		2.0	0.5	Hydrothermal Infill Breccia
588	589	0.02	0.01	1.9	4.55		3.0	0.2	Hydrothermal Infill Breccia
589	590	0.05	0.01	3.8	1.42		2.0	1.0	Hydrothermal Infill Breccia
590	591	0.03	0.01	1.2	1.99		2.0	0.2	Hydrothermal Infill Breccia
591	592	0.02	0.03	1.7	1.48		2.0	0.2	Hydrothermal Infill Breccia
592	593	0.02	0.00	1	0.55		3.0	0.2	Hydrothermal Infill Breccia
593	594	0.04	0.00	1.8	1.08		3.0	0.2	Hydrothermal Infill Breccia
594	595	0.09	0.01	3	0.58		3.0	0.5	Hydrothermal Infill Breccia
595	596	0.09	0.01	4.1	0.61		3.0	0.5	Hydrothermal Infill Breccia
596	597	0.07	0.01	1.8	0.55		2.0	0.2	Hydrothermal Infill Breccia
597	598	0.10	0.01	3.4	0.77		2.0	0.2	Hydrothermal Infill Breccia



From Depth m	To Depth m	Cu %	Au g/t	Ag g/t	Sulphur %	Chalcocite %	Pyrite Visual %	Chalco-pyrite Visual %	Lithology
598	599	0.02	0.01	0.8	1.28		3.0	0.2	Hydrothermal Infill Breccia
599	600	0.02	0.01	1	2.24		3.0	0.2	Hydrothermal Infill Breccia
600	601	0.01	0.01	1	2.91		3.0	0.2	Hydrothermal Infill Breccia
601	602	0.02	0.00	0.8	0.97		2.0	0.1	Hydrothermal Infill Breccia
602	603	0.19	0.02	5.6	1.79		2.0	0.1	Hydrothermal Infill Breccia
603	604	0.03	0.01	0.7	1.42		2.0	0.1	Hydrothermal Infill Breccia
604	605	0.03	0.01	2.1	2.32		2.0	0.1	Hydrothermal Infill Breccia
605	606	0.05	0.01	1.3	0.62		1.0	0.1	Hydrothermal Infill Breccia
606	607	0.02	0.01	0.6	1.05		1.0	0.1	Hydrothermal Infill Breccia
607	608	0.02	0.01	0.5	1.66		1.0	0.1	Hydrothermal Infill Breccia
608	609	0.01	0.01	0	7.05		10.0	0.1	Diorite
609	610	0.02	0.01	0.8	4.94		10.0	0.1	Diorite
610	611	0.06	0.02	1.5	6.07		10.0	0.1	Diorite

JORC Code Table 1 Cannindah Resources Limited announcement 16th November, 2021.

Section 1: Sampling Techniques and Data

Criteria	Explanation	Commentary
Sampling techniques	<p><i>Nature and quality of sampling (e.g. cut channels, random chips, or specific specialised industry standard measurement tools appropriate to the minerals under investigation, such as down hole gamma sondes, or handheld XRF instruments, etc.) These examples should not be taken as limiting the broad meaning of sampling.</i></p> <p><i>Include reference to measures taken to ensure sampling representivity and the appropriate calibration of any measurement tools or systems used.</i></p> <p><i>Aspects of the determination of mineralisation that are Material to the Public Report. In cases where 'industry standard' work has been done this would be relatively simple (e.g. 'reverse circulation drilling was used to obtain 1m samples from which 3kg was pulverised to produce a 30g charge for fire assay'). In other cases more explanation may be required, such as where there is coarse gold that has inherent sampling problems. Unusual commodities or mineralisation types (e.g. submarine nodules) may warrant disclosure of detailed information.</i></p>	<p>. Sampling results are based on sawn half core samples of both PQ ,HQ and NQ diameter diamond drill core. An orientation line was marked along all core sections. One side of the core was consistently sent for analysis and the other side was consistently retained for archive purposes. The orientation line was consistently preserved.</p> <p>Half core samples were sawn up on a diamond saw on a metre basis for HQ,NQ diameter core and a 0.5m basis for PQ diameter core. Samples were forwarded to commercial NATA standard laboratories for crushing, splitting and grinding ,Laboratory used in this instance is Intertek Genalysis , Townsville. Analytical sample size was in the order of 2.5kg to 3kg.</p>
Drilling techniques	<p><i>Drill type (e.g. core, reverse circulation, open-hole hammer, rotary air blast, auger, Bangka, sonic, etc.) and details (e.g. core diameter, triple or standard tube, depth of diamond tails, face-sampling bit or other type, whether core is oriented and if so, by what method, etc.)</i></p>	<p>Drill type is diamond core. Core diameter at top of hole is PQ, below 30m core diameter is HQ and NQ. Triple tube methodology was deployed for PQ & HQ, which resulted in excellent core recovery throughout the hole. Core was oriented , utilizing an Ace Orientation equipment and rigorously supervised by on-site geologist.</p>
Drill sample recovery	<p><i>Method of recording and assessing core and chip sample recoveries and results assessed.</i></p> <p><i>Measures taken to maximise sample recovery and ensure representative nature of the samples.</i></p>	<p>Core recovery was recorded for all drill runs and documented in a Geotechnical log. The Triple Tube technology and procedure ensured core recoveries were excellent throughout the hole.</p> <p>Triple tube methodology ensure excellent core recoveries. Core was marked up in metre lengths and reconciled with drillers core blocks. An orientation line was drawn on the core . Core sampling was undertaken by an experienced operator who ensured that half core was sawn up with one side consistently sent for analysis and the other side was consistently retained for archive purposes. The</p>



Criteria	Explanation	Commentary
		orientation line was consistently preserved.
	<i>Whether a relationship exists between sample recovery and grade and whether sample bias may have occurred due to preferential loss/gain of fine/coarse material.</i>	Core recoveries were good. An unbiased , consistent half core section was submitted for the entire hole, on the basis of continuous 1m sampling. 0.5m in the case of PQ.The entire half core section was crushed at the lab and then split , The representative subsample was then fine ground and a representative unbiased sample was extracted for further analysis.
Logging	<i>Whether core and chip samples have been geologically and geotechnically logged to a level of detail to support appropriate Mineral Resource estimation, mining studies and metallurgical studies</i>	Geological logging was carried out by well-trained/experienced geologist and data entered via a well-developed logging system designed to capture descriptive geology, coded geology and quantifiable geology. All logs were checked for consistency by the Principal Geologist. Data captured through Excel spread sheets and Explorer 3 Relational Data Base Management System. A geotechnical log was prepared.
	<i>Whether logging is qualitative or quantitative in nature. Core (or costean, channel etc.) photography.</i>	Logging was qualitative in nature. A detailed log was described on the basis of visual observations. A comprehensive Core photograph catalogue was completed with full core dry, full core wet and half core wet photos taken of all core.
	<i>The total length and percentage of the relevant intersections logged.</i>	The entire length of all drill holes has been geologically logged.
Sub-sampling techniques and sample preparation	<i>If core, whether cut or sawn and whether quarter, half or all core taken.</i>	Half core samples were sawn up on a diamond saw on a metre basis for HQ, NQ diameter core and a 0.5m basis for PQ diameter core. . .
	<i>If non-core, whether riffled, tube sampled, rotary split, etc. and whether sampled wet or dry.</i>	All sampling was of diamond core
	<i>For all sample types, the nature, quality and appropriateness of the sample preparation technique.</i>	The above techniques are considered to be of a high quality, and appropriate for the nature of mineralisation anticipated.
	<i>Quality control procedures adopted for all sub-sampling stages to maximise representativity of samples.</i>	QA/QC protocols were instigated such that they conform to mineral industry standards and are compliant with the JORC code. Terra Search's input into the Quality Assurance (QA) process with respect to chemical analysis of mineral exploration diamond core samples includes the addition of blanks, standards to each batch so that checks can be done after they are analysed. As part of the Quality Control (QC) process, Terra Search checks the resultant assay data against known or previously determined assays to determine the quality of the analysed batch of samples. An assessment is made on the data and a report on the quality of the data is compiled.

Criteria	Explanation	Commentary
	<i>Measures taken to ensure that the sampling is representative of the in situ material collected, including for instance results for field duplicate/second-half sampling.</i>	The lab results are checked against visual estimations and PXRF sampling of sludge and coarse crush material.
	<i>Whether sample sizes are appropriate to the grain size of the material being sampled.</i>	The standard 2kg -5kg sample is more than appropriate for the grainsize of the rock-types and sulphide grainsize. The sample sizes are considered to be appropriate to represent the style of the mineralisation, the thickness and consistency of the intersections.
Quality of assay data and laboratory tests	<i>The nature, quality and appropriateness of the assaying and laboratory procedures used and whether the technique is considered partial or total.</i>	<p>After crushing splitting and grinding at Intertek/Genalysis lab Townsville samples were assayed for gold using the 50g fire assay method</p> <p>The primary assay method used is designed to measure both the total gold in the sample as per classic fire assay.</p> <p>The total amount of economic metals tied up in sulphides and oxides such as Cu, Pb, Zn, Ag, As, Mo, Bi, S is captured by the 4 acid digest method ICP finish. This is regarded as a total digest method and is checked against QA-QC procedures which also employ these total techniques.</p> <p>Major elements which are present in silicates, such as K, Ca, Fe, Ti, Al, Mg are also digested by the 4 acid digest Total method.</p> <p>The techniques are considered to be entirely appropriate for the porphyry, skarn and vein style deposits in the area.</p> <p>The economically important elements in these deposits are contained in sulphides which is liberated by 4 acid digest, all gold is determined with a classic fire assay.</p>
	<i>For geophysical tools, spectrometers, handheld XRF instruments, etc. the parameters used in determining the analysis including instrument make and model, reading times, calibration factors applied and their derivation, etc.</i>	<p>Magnetic susceptibility measurements utilizing Exploranium KT10 instrument, zeroed between each measurement.</p> <p>No PXRF results are reported here. although PXRF analysis has been utilized to provide multi-element data for the prospect and will be reported separately. The lab pulps are considered more than appropriate samples for this purpose.</p> <p>PXRF Analysis is carried out in an air-conditioned controlled environment in Terra Search offices in Townsville. The instrument used was Terra Search's portable Niton XRF analyser (Niton 'trugeo' analytical mode) analysing for a suite of 40 major and minor elements. in. The PXRF equipment is set up on a bench and the sub-sample (loose powder in a thin clear plastic freezer bag) is placed in a lead-lined stand. An internal detector autocalibrates the portable machine, and</p>

Criteria	Explanation	Commentary
		<p>Terra Search standard practice is to instigate recalibration of the equipment every 2 to 3 hours.</p> <p>Readings are undertaken for 60 seconds on a circular area of approximately 1cm diameter. A higher number of measurements are taken from the centre of the circle and decreasing outwards.</p> <p>PXRF measures total concentration of particular elements in the sample. Reading of the X-Ray spectra is effected by interferences between different elements. The matrix of the sample eg iron content has to be taken into account when interpreting the spectra.</p> <p>The reliability and accuracy of the PXRF results are checked regularly by reference to known standards. There are some known interferences relevant to particular elements eg W & Au; Th & Bi, Fe & Co. Awareness of these interferences is taken into account when assessing the results.</p>
	<p><i>Nature of quality control procedures adopted (e.g. standards, blanks, duplicates, external laboratory checks) and whether acceptable levels of accuracy (i.e. lack of bias) and precision have been established.</i></p>	<p>QAQC samples are monitored on a batch-by-batch basis, Terra Search has well established sampling protocols including blanks, certified reference material, and in-house standards which are matrix matched against the samples in the program.</p> <p>Terra Search quality control included determinations on certified OREAS samples and analyses on duplicate samples interspersed at regular intervals through the sample suite of both the commercial laboratory batch. Standards were checked and found to be within acceptable tolerances. Laboratory assay results for these quality control samples are within 5% of accepted values.</p>
<p>Verification of sampling and assaying</p>	<p><i>The verification of significant intersections by either independent or alternative company personnel.</i></p>	<p>Significant intersections were verified by Terra Search Pty Ltd, geological consultants who conducted drilling. Validation is checked by comparing assay results with logged mineralogy eg sulphide material in relation to copper and gold grade.</p>
	<p><i>The use of twinned holes.</i></p>	<p>There has been little direct twinning of holes, the hole reported here pass close to earlier drill holes, assay results and geology are entirely consisted with previous results.</p>
	<p><i>Documentation of primary data, data entry procedures, data verifications, data storage (physical and electronic) protocols.</i></p>	<p>Data is collected by qualified geologists and experienced field assistants and entered into excel spreadsheets.</p>

Criteria	Explanation	Commentary
		<p>Data is imported into database tables from the Excel spreadsheets with validation checks set on different fields. Data is then checked thoroughly by the Operations Geologist for errors. Accuracy of drilling data is then validated when imported into MapInfo.</p> <p>Location and analysis data are then collated into a single Excel spreadsheet. Data is stored on servers in the Consultants office and also with CAE. There have been regular backups and archival copies of the database made. Data is also stored at Terra Search's Townsville Office. Data is validated by long-standing procedures within Excel Spreadsheets and Explorer 3 data base and spatially validated within MapInfo GIS.</p>
	<i>Discuss any adjustment to assay data.</i>	No adjustments are made to the Commercial lab assay data. Data is imported into the database in its original raw format.
Location of data points	<i>Accuracy and quality of surveys used to locate drill holes (collar and down-hole surveys), trenches, mine workings and other locations used in Mineral Resource estimation.</i>	<p>Collar location information was originally collected with a Garmin 76 hand held GPS.</p> <p>X-Y accuracy is estimated at 3-5m, whereas height is +/- 10m. Coordinates will be reassessed with DGPS survey.</p> <p>Down hole surveys were conducted on all holes using a Reflex downhole digital camera. Surveys were generally taken every 30m downhole, dip, magnetic azimuth and magnetic field were recorded.</p>
	<i>Specification of the grid system used.</i>	Coordinate system is UTM Zone 55 (MGA) and datum is GDA94
	<i>Quality and adequacy of topographic control.</i>	Pre-existing DTM is high quality and available.
Data spacing and distribution	<i>Data spacing for reporting of Exploration Results.</i>	At the Mt Cannindah mine area previous drilling program total over 100 deep diamond and Reverse Circulation percussion holes.. Almost all have been drilled in 25m to 50m spaced fences, from west to east, variously positioned over a strike length of 350m and a cross strike width of at least 500m.. Down hole sample spacing is in the order of 1m to 2m which is entirely appropriate for the style of the deposit and sampling procedures.
	<i>Whether the data spacing and distribution is sufficient to establish the degree of geological and grade continuity appropriate for the Mineral Resource and Ore Reserve estimation procedure(s) and classifications applied.</i>	Previous resource estimates on Mt Cannindah include Golders 2008 for Queensland Ores and Helman & Schofield 2012 for Drummond Gold. Both these estimates utilised 25m to 50m fences of west to east drillholes, but expressed concerns regarding confidence in assay continuity both between 50m sections and between holes within the plane of the cross sections. The hole reported here addresses some of the concerns about



Criteria	Explanation	Commentary
		grade continuity, by linking mineralisation from section to section and also in the plane of the cross sections. Further drilling is necessary to enhance and fine tune the previous Mineral Resource. estimates at Mt Cannindah and lift the category from Inferred to Indicated and Measured and compliant with JORC 2012. .
Orientation of data in relation to geological structure	<p><i>Whether sample compositing has been applied.</i></p> <p><i>Whether the orientation of sampling achieves unbiased sampling of possible structures and the extent to which this is known, considering the deposit type.</i></p> <p><i>If the relationship between drilling orientation and the orientation of key mineralised structures is considered to have introduced a sampling bias, this should be assessed and reported if material.</i></p>	<p>No sample compositing has been applied, Most are 0.5m to 1m downhole samples..</p> <p>The main objective of hole 21CAEDD003, reported here is to establish grade continuity down plunge,.. The hole is oriented within the 100m plus-wide infill breccia zone at Mt Cannindah. The hole was drilled to the west (260 mag azimuth) , the Infill breccia is massive textured and clasts and matrix have a generally random, non-preferred orientation . Pre and post mineral dykes cut the drill hole , generally in two orientations , east west, semi-parallel to the hole , and north south , right angles to the hole.</p> <p>As the infill breccia is massive textured and clasts and matrix infill have a generally random, non-preferred orientation, no sampling bias is evident in the logging, or the presentation of results or drill cross and long sections.The breccia zone at Mt Cannindah is of sufficient width and depth that drillhole 21CAEDD003 provides valuable unbiased information concerning grade continuity of the breccia body. The complete geometry of the breccia body is unknown at this stage.</p>
Sample security	<i>The measures taken to ensure sample security.</i>	Chain of custody was managed by Terra Search Pty Ltd. Core trays were freighted in sealed pallets from Monto were they were dispatched by Terra Search . The core was processed and sawn in Terra Search's Townsville facilities and half core samples were delivered by Terra Search to Intertek/Genalysis laboratory Townsville lab.
Audits or reviews	<i>The results of any audits or reviews of sampling techniques and data.</i>	There have been numerous independent reviews carried out on the Mt Cannindah project reviewing sampling, data sets, geological controls, the most notable ones are Newcrest circa 1996; Coolgardie Gold1999; Queensland Ores 2008;Metallica ,2008; Drummond Gold, 2011; CAE 2014.

APPENDIX 2 – JORC Code Table 2

Section 2: Reporting of Exploration Results

Mineral tenement and land tenure status	<i>Type, reference name/number, location and ownership including agreements or material issues with third parties such as joint ventures, partnerships, overriding royalties, native title interests, historical sites, wilderness or national and environmental settings.</i>	<p>Exploration conducted on MLs 2301, 2302, 2303, 2304, 2307, 2308, 2309, EPM 14524, and EPM 15261. 100% owned by Cannindah Resources Pty Ltd.</p> <p>The MLs were acquired in 2002 by Queensland Ores Limited (QOL), a precursor company to Cannindah Resources Limited. QOL acquired the Cannindah Mining Leases from the previous owners, Newcrest and MIM. As part of the purchase arrangement a 1.5% net smelter return (NSR) royalty on any production is payable to MIM/Newcrest and will be shared 40% by MIM and 60% by Newcrest.</p> <p>An access agreement with the current landholders is in place.</p>
	<i>The security of the tenure held at the time of reporting along with any known impediments to obtaining a license to operate in the area.</i>	No impediments to operate are known.
Exploration done by other parties	<i>Acknowledgement and appraisal of exploration by other parties.</i>	<p>Previous exploration has been conducted by multiple companies. Data used for evaluating the Mt Cannindah project include : Drilling & geology, surface sampling by MIM (1970 onwards) drilling data Astrik (1987), Drill, Soil, IP & ground magnetics and geology data collected by Newcrest (1994-1996), rock chips collected by Dominion (1992), Drilling data collected by Coolgardie Gold (1999), Queensland Ores (2008-2011), Planet Metals-Drummond Gold (2011-2013) . Since 2014 Terra Search Pty Ltd, Townsville QLD has provided geological consultant support to Cannindah Resources.</p>
Geology	<i>Deposit type, geological setting and style of mineralisation.</i>	Breccia and porphyry intrusive related Cu-Au-Ag-Mo , base metal skarns and shear hosted Au bearing quartz veins occur adjacent to a Cu-Mo porphyry.
Drill hole information	<p><i>A summary of all information material to the understanding of the exploration results including a tabulation of the following information for all Material drill holes:</i></p> <ul style="list-style-type: none"> <i>Easting and northing of the drill hole collar</i> <i>Elevation or RL (Reduced Level – elevation above sea level in metres) of the drill hole collar</i> <i>Dip and azimuth of the hole</i> 	<p>A major drill data base exists for the Mt Cannindah district amounting to over 400 holes. Selected Cu and Au down hole intervals of interest have been listed in CAE's ASX announcement, March, 2021.</p>



- Down hole length and interception depth
- Hole length

If the exclusion of this information is justified on the basis that the information is not Material and this exclusion does not detract from the understanding of the report, the Competent Person should clearly explain why this is the case.

Data aggregation methods

In reporting Exploration Results, weighting averaging techniques, maximum and/or minimum grade truncations (e.g. cutting of high grades) and cut-off grades are usually Material and should be stated.

Where aggregate intercepts incorporate short lengths of high grade results and longer lengths of low grade results, the procedure used for such aggregation should be stated and some typical examples of such aggregations be shown in detail

No cut-offs have been routinely applied in reporting of the historical drill results or the drillhole 21CAEDD002 reported here.

The Cu-Au-Ag breccia style mineralisation at Mt Cannindah is developed over considerable downhole lengths. The breccia is generally mineralised, although copper grade and sulphide content is variable. In addition pre and post mineral dykes and intrusive bodies can mask the mineralisation. Down hole Cu-Au-Ag intercepts have been quoted both as a semi-continuous, aggregated down hole interval and also as tighter higher grade Cu-Au-Ag sections. In addition, historical results have been reported in the aggregated form displayed in the ASX Announcement for CAE, March, 2021, many times previously. There are some zones of high grade which can influence the longer intercepts, however the variance in copper and gold grade is generally of a low order..

The assumptions used for any reporting of metal equivalent values should be clearly stated.

A copper equivalent has been used to report the wider intercept that carries Au and Ag credits with copper being dominant. Only raw economic values have been used based on current metal prices. No formal metallurgical work is available for Mt Cannindah at this stage, so metal recoveries have not been used in the copper equivalent calculation. 30 day average prices in USD for October, 2021, have been used for Cu, Au, Ag, specifically copper @ USD\$9250/tonne, gold @ USD\$1750/oz and silver @ USD\$23/oz.

Relationship between mineralisation widths and intercept lengths

The relationships are particularly important in the reporting of Exploration Results.

If the geometry of the mineralisation with respect to the drill hole angle is known, its nature should be reported

If it is not known and only the down hole lengths are reported, there should be a clear statement to this effect (e.g. down hole length, true width not known).

21CAEDD002 reported here is oriented across the strike of the 100m plus-wide infill breccia zone at Mt Cannindah. The hole was drilled to the west (260 mag azimuth), the Infill breccia is massive textured and clasts and matrix have a generally random, non-preferred orientation. Pre and post mineral dykes cut the drill hole, generally in two orientations, north south, semi-parallel to the hole, and east west, right angles to the hole. Previous resource estimations at



		<p>Mt Cannindah model the breccia body as elongated NNE-SSW and at least 100m plus thick in an east west direction. Previous estimations indicate a potentially depth extension to 350m plus.. The breccia body geometry, as modelled at surface has the long axis oriented NNE-SSW which is right angles to hole 21CAEDD003 reported here. In this context , this hole is drilled down the plunge of the breccia body with the potential true width of the body oriented at an oblique angle to hole 21CAEDD003. However, geological consultants, Terra Search argue that the dimensions of the mineralised body are uncertain , the longest axis could well be plunging to greater depths, and the upper and lower contacts are still to be firmly established. ,</p>
Diagrams	<p><i>Appropriate maps and sections (with scale) and tabulations of intercepts should be included for any significant discovery being reported. These should include, but not be limited to a plan view of drill hole collar locations and appropriate sectional views.</i></p>	<p>Sections and plans of the drillhole 21CAEDD003 reported here are included in this report. Geological data is still being assembled at the time of this report.</p>
Balanced reporting	<p><i>Where comprehensive reporting of all Exploration Results is not practicable, representative reporting of both low and high grades and/or widths should be practised to avoid misleading reporting of Exploration Results.</i></p>	<p>All Cu,Au,Ag assays from the 0m to 493m section of hole 21CAEDD003 are listed with this report. Significant intercepts are tabulated. All holes were sampled over their entire length, Reported intercepts have been aggregated where mineralization extends over significant down hole widths. This aggregation has allowed for the order of 10m non mineralized late dykes or lower grade breccia sections.to be incorporated within the reported intersections. .</p>
Other substantive exploration data	<p><i>Other exploration data, if meaningful and material, should be reported including (but not limited to): geological observations; geophysical survey results; geochemical survey results; bulk samples – size and method of treatment; metallurgical test results; bulk density, groundwater, geotechnical and rock characteristics; potential deleterious or contaminating substances.</i></p>	<p>The latest drill results from the Mt Cannindah project are reported here. The report concentrates on the Cu,Au, Ag results. Other data, although not material to this update will be collected and reported in due course.</p>
Further work	<p><i>The nature and scale of planned further work (e.g. test for lateral extensions or depth extensions or large-scale step-out drilling).</i></p>	<p>Drill targets are identified and further drilling is required. Drilling has continued after the completion of hole 21CAEDD003. To date a further 4 holes have been drilled Other drilling is planned at Mt Cannindah Breccia.</p>
	<p><i>Diagrams clearly highlighting the areas of possible extensions, including the main geological interpretations and future drilling areas, provided this information is not commercially sensitive.</i></p>	<p>Not yet determined, further work is being conducted.</p>

APPENDIX 3– JORC Code Table 2

Section 3: Estimation and Reporting of Mineral Resources

Audits or Review	<i>The results of audits and reviews of any ore resource Estimates.</i>	<p>There have been several resource estimations made over the various deposits at Mt Cannindah. These have been in the public domain for a number of years.</p> <p>The most recent resource statement by by Hellman & Schofield in 2011 is for Drummond Gold on the resource at Mt Cannindah itself. This was reported under the JORC 2004 code and has not been updated to comply with JORC 2012 on the basis that the information has not materially changed since it was last reported.</p> <p>The resource statement from the Drummond Gold 2013 report is set out below.</p> <p>Mt Cannindah (Hellman & Schofield for Drummond Gold,2011) JORC,2004</p>
-------------------------	---	---

Deposit Area	Mt Cannindah						
Source	Hellman & Schofield 2011 Using JORC 2004				Estimated indicative contained In situ Metal		
Category	Tonnage	Copper %	Gold g/t	Silver g/t	Cu tonnes	Au ozs	Ag ozs
Measured (H&S)	1,888,290	0.96	0.39	16.2	18,128	23,680	983,611
Indicated (H&S)	2,529,880	0.86	0.34	14.5	21,757	27,658	1,182,780
Inferred (H&S)	1,135,000	0.97	0.27	13.6	11,010	9,854	494,875
Total	5,553,170	0.92	0.34	14.9	50,894	61,191	2,661,265

Table 1.1 Mt Cannindah Project Previously identified Resources . CAE advises that no economic or mining parameters have been applied to the estimated indicative in-situ contained metal amounts. All resources are contained in granted mining leases.