



ASX ANNOUNCEMENT

23 June 2022

## Aurora Tank Gold

### Drilling completed

---

Marmota Limited (ASX: MEU) ("Marmota")

Marmota is very pleased to announce that the **drilling program at Aurora Tank has now been completed**. The program was recently expanded from 10,000m (original) to ~ 12,000m [ cf. ASX:MEU 25 May 2022 ].

#### PROGRAM: May / June 2022

- **RC drill program:** 99 holes – original 85 holes
- **Total RC drilling:** 12,000m (approx.) – original 10,000m
- **Hole depths:** Average: 121m ( Max: 200m )
- Of the 99 holes, 79 are at Aurora Tank, and 20 are reconnaissance holes on surrounding tenements.
- Samples will shortly be transported to Adelaide for laboratory testing.
- Assay results currently expected in approximately 6 weeks.





**Figure 1:** Drilling at Aurora Tank – May 2022



## Multiple Objectives

The **May / June 2022** program has **multiple objectives** including:

**1. NW Flank**

Testing further extensions to the new NW flank [ see [Fig. 2 and 3](#) ].

The NW flank has recently tripled in strike and is yielding outstanding intersections such as:

**3m @ 72 g/t gold** (from 66m) including **1m @ 197g/t** gold

**5m @ 27 g/t gold** (from 38m) including **1m @ 105g/t** gold

**3m @ 29 g/t gold** (from 63m) including **1m @ 74g/t** gold

**4m @ 15 g/t gold** (from 67m) including **1m @ 53g/t** gold

**2. Sub-parallel Extensions** to the N and NE (in parallel to the NW flank)

**3. Extensions at depth** targeting **primary mineralisation**

**4. Extensions** to the east of the Aurora Tank mineralised zone <sup>1</sup>

**5. Selected drilling** to aid resource modelling and optimal pit design, or where previous holes were not deep enough.

The program also includes a number of holes that form part of the **Accelerated Discovery Initiative (ADI)** at both Aurora Tank and on surrounding tenements (Woorong Downs and Comet) that are jointly funded by the South Australian Government under a grant awarded to Marmota [ [ASX:MEU 24 June 2020](#) ]. Some of these holes are early stage reconnaissance work.

---

<sup>1</sup> Earlier exploratory reconnaissance holes to the east in Figure 2 (sometimes as little as 20m or 30m downhole) were not deep enough, or the ground was too hard for the AC rig being used for the early recon work.

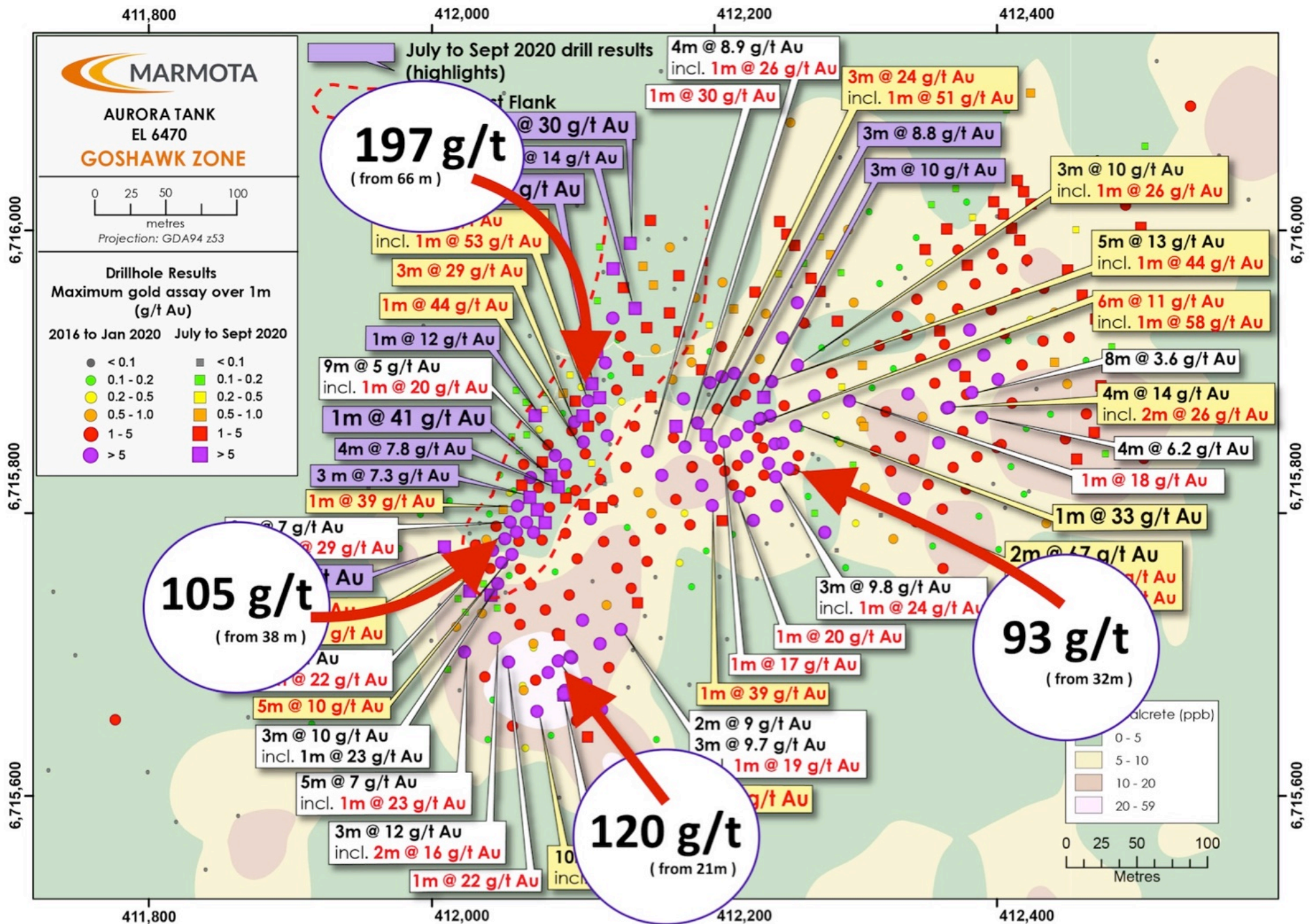
**Marmota Chairman, Dr Colin Rose, said:**

**“ This has been a thoroughly exciting and intriguing program. Were it not for a variety of logistical issues, we would have liked to extend the program further.**

**We are hoping this will be our final drill program at Aurora Tank prior to our lodging a Mining Lease application at Aurora Tank.**

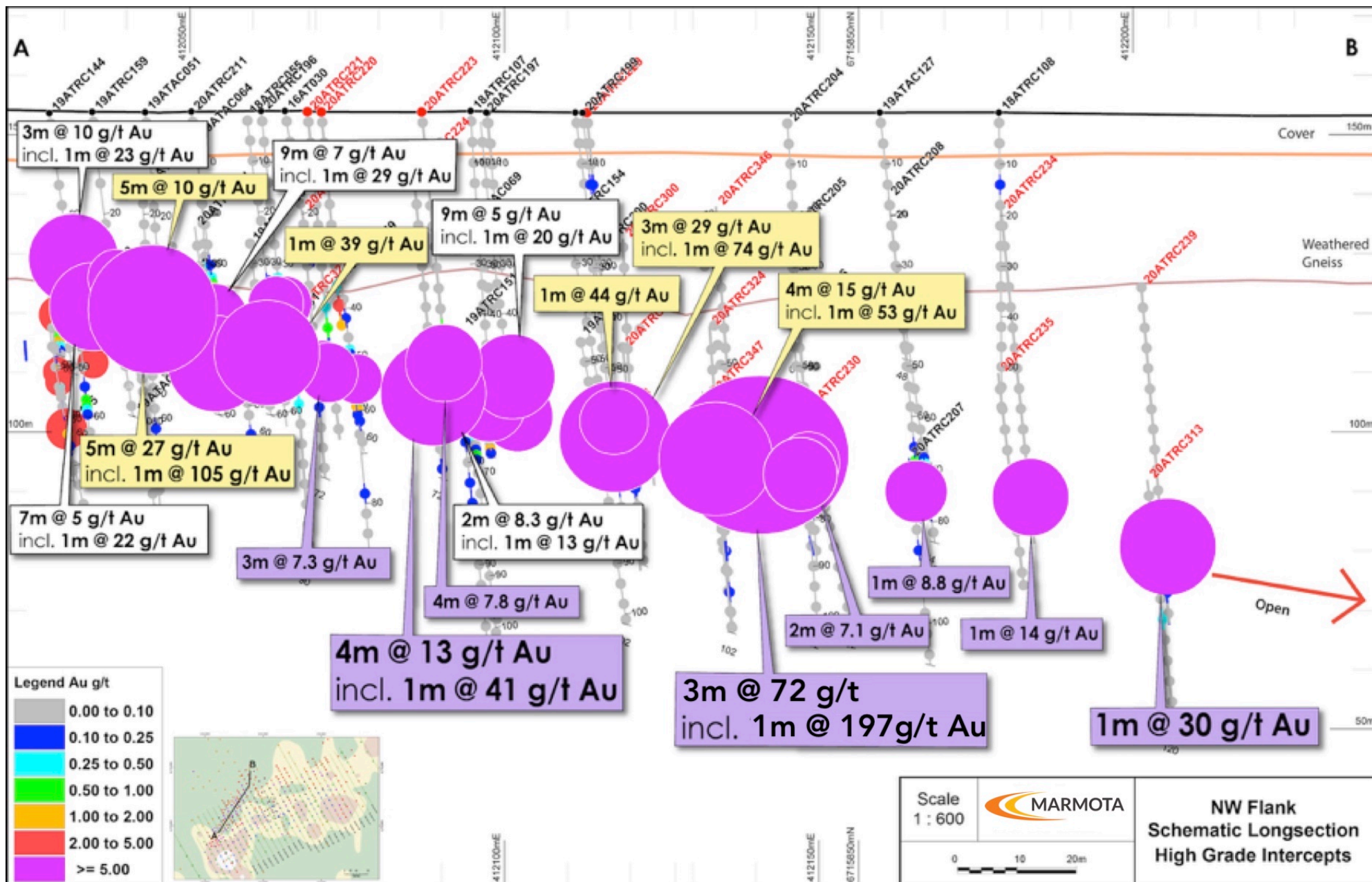
**The program develops a number of parallel extensions that are still open, and should enable us to complete work on an optimal open pit design.**

**On behalf of all our shareholders, may I extend our thanks to our wonderful team at Aurora Tank and in Adelaide, and to the drilling crews at Bullion who have all been working non-stop for almost 2 months to bring this to fruition. ”**



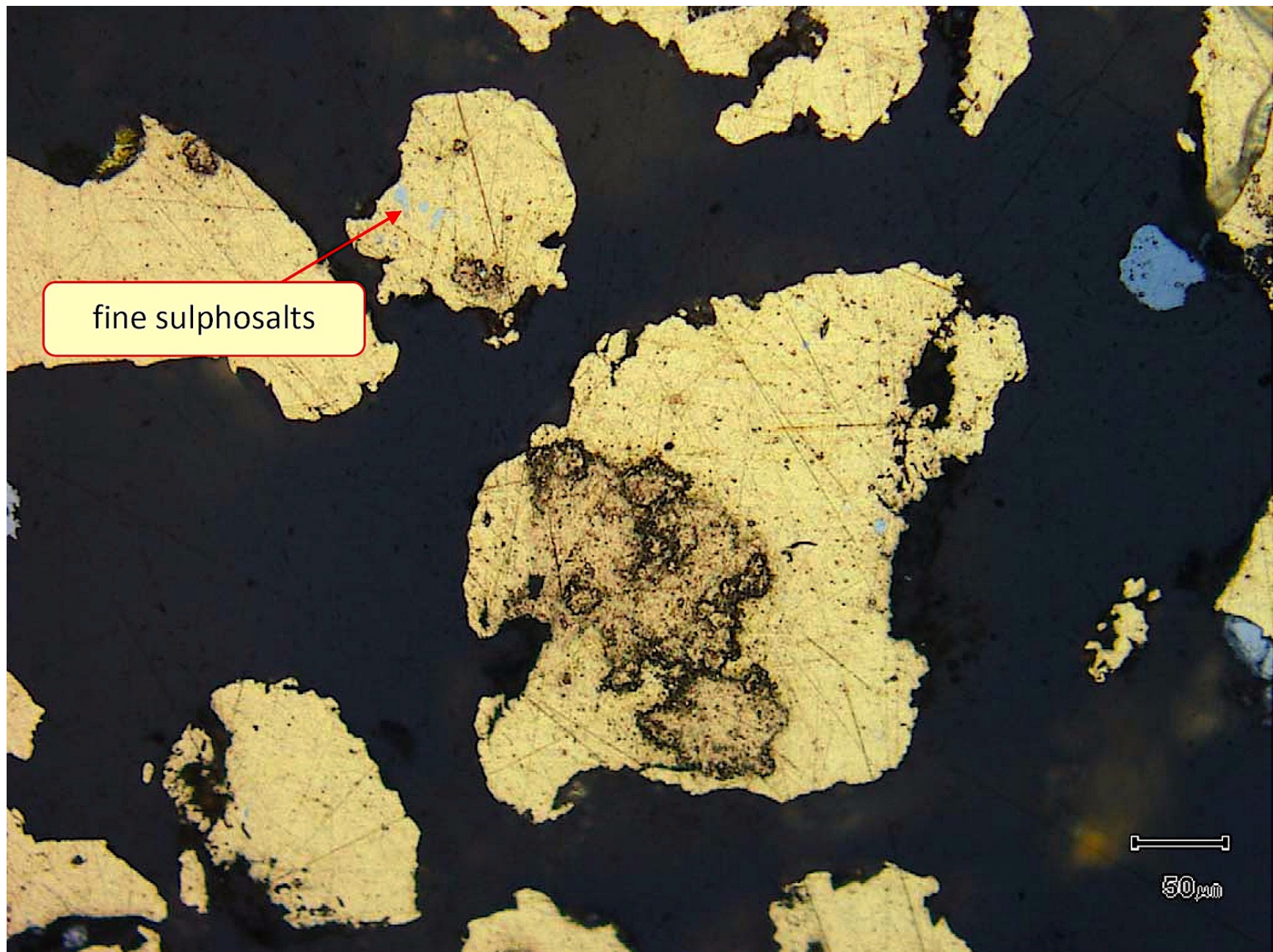
**Figure 2: Aurora Tank: location and grade of best intersections over 1m (circled) + new NW flank - - - -**





**Figure 3:** Schematic long-section through new NW flank





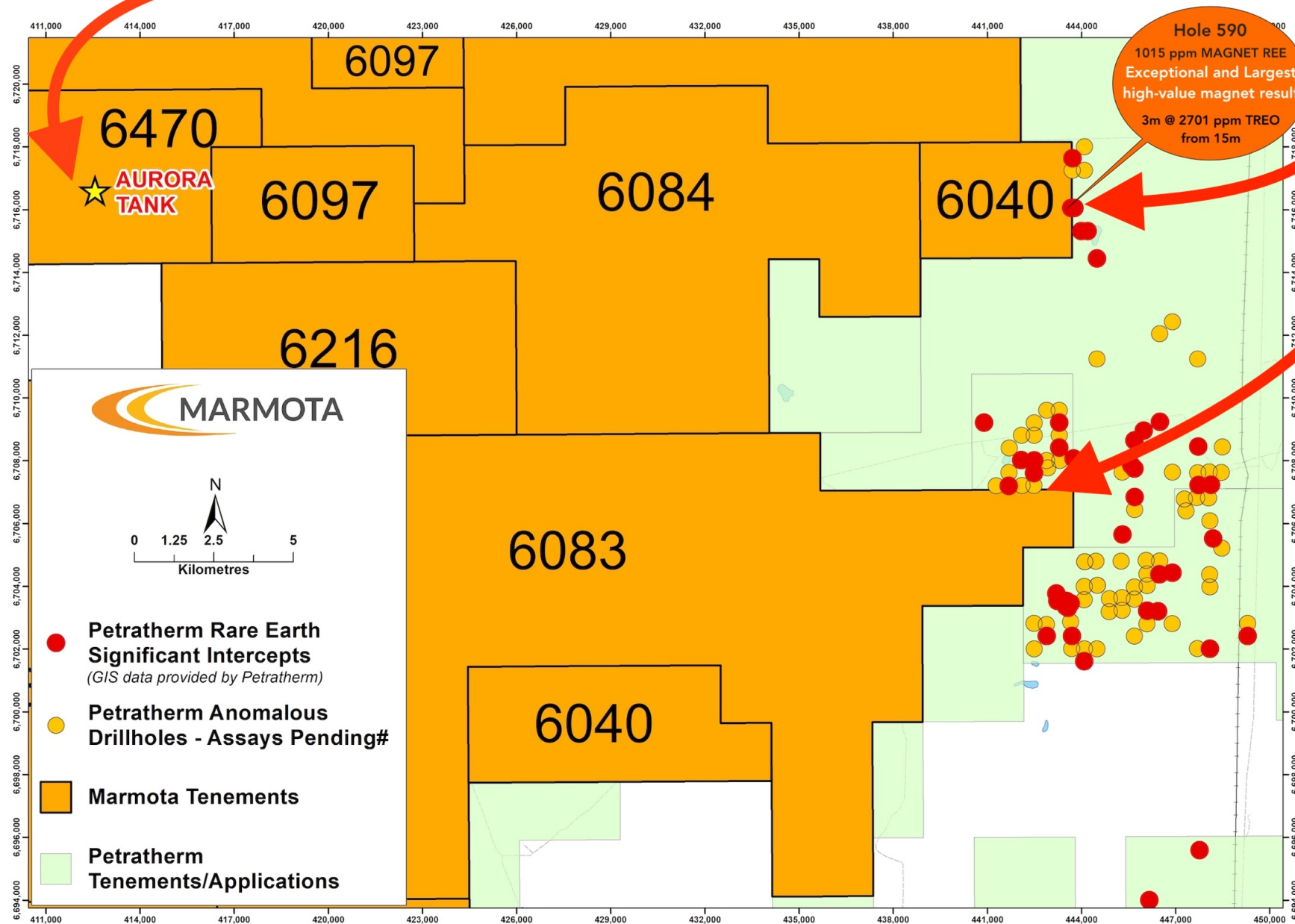
(Mag. x 200; scale bar = 50μ; reflected light)

**Fig 4: Primary Hypogene Gold grains** sampled from Hole 104 at Aurora Tank

Diagram shows fine-grained sulphosalts (Bi-Sb-rich) contained within the primary hypogene gold particles

## Aurora Tank Gold

## New Major REE discovery on MEU tenement boundary





Follow Marmota on Twitter at: [twitter.com/MarmotaLimited](https://twitter.com/MarmotaLimited)

For further information, please contact:

**Marmota Limited**

**Dr Colin Rose** Executive Chairman  
Email: [colin@marmota.com.au](mailto:colin@marmota.com.au)

Unit 6  
79-81 Brighton Road  
Glenelg SA 5045  
ABN: 38 119 270 816  
T: (08) 8294 0899  
F: (08) 8376 8633  
[www.marmota.com.au](http://www.marmota.com.au)

---

**About Marmota Limited**

Marmota Limited (ASX: MEU) is a South Australian mining exploration company, focused on gold, copper and uranium. Gold exploration is centred on the Company's dominant tenement holding in the highly prospective and significantly underexplored Gawler Craton, near the Challenger gold mine, in the Woomera Prohibited Defence Area. The Company's copper project is based at the Melton project on the Yorke Peninsula. The Company's uranium JORC resource is at Junction Dam adjacent to the Honeymoon mine.

For more information, please visit: [www.marmota.com.au](http://www.marmota.com.au)

**Competent Persons Statement**

Information in this Release relating to Exploration Results is based on information compiled by Aaron Brown, who is a Member of The Australian Institute of Geoscientists. He has sufficient experience relevant to the styles of mineralisation and types of deposits under consideration and to the activities being undertaken to qualify as a Competent Person as defined in the 2012 Edition of the "Australasian Code of Reporting of Exploration Results, Mineral Resources and Ore Reserves." Mr Brown consents to the inclusion in this report of the matters based on this information in the form and context in which they appear.

Where results from previous announcements are quoted, Marmota confirms that it is not aware of any new information or data that materially affects the information included in the relevant market announcement and, in the case of estimates of Mineral Resources, that all material assumptions and technical parameters underpinning the estimates in the relevant market announcement continue to apply and have not materially changed.

For the purpose of ASX Listing Rule 15.5, the Board has authorised for this announcement to be released.