



WHERE THE WORLD RIDES™

BIKEEXCHANGE (ASX: BEX)

INVESTOR PRESENTATION

May 26th, 2022

Disclaimer

Important information

This presentation has been prepared by BikeExchange Limited ("**BikeExchange**" or "**BEX**" or '**Company**') in relation to an institutional placement of new fully paid ordinary shares ("**New Shares**") in BikeExchange ("**Placement**" or "**Offer**").

BikeExchange also proposes to undertake a non-renounceable entitlement offer of one (1) new BikeExchange Share ("**New Share**") for every one (1) existing BikeExchange share held by eligible shareholders on the Record Date, at an issue price of A\$0.02 (2 cents) per New Share ("**Offer Price**") to raise approximately A\$6 million (before costs) ("**Entitlement Offer**").

Summary information

This presentation contains summary information about BikeExchange and its activities current as at the date of this presentation. The information contained in this presentation is for information purposes only. The information in this presentation is supplied in summary form, is of a general background nature and does not purport to be complete or to provide all information that an investor should consider when making an investment decision. It should be read in conjunction with BEX's periodic and continuous disclosure announcements filed with the ASX.

This presentation is not and does not contain all of the information which would be required to be disclosed in a prospectus, product disclosure statement or any other offering document under Australian law or any other law (and will not be lodged with ASIC or any foreign regulator).

Not an offer

The Placement will be conducted under section 708 of the *Corporations Act 2001* (Cth) ("**Corporations Act**") and will be made available to certain persons whom a prospectus is not required to be given under Chapter 6D of the Corporations Act. The Entitlement Offer will only be made available to eligible shareholders and will be conducted in accordance with section 708AA of the Corporations Act.

This presentation is not, and does not constitute, an offer to sell or the solicitation, invitation or recommendation to purchase any securities (including shares in BikeExchange) or any other financial product and neither this presentation nor any of the information contained herein shall form the basis of any contract or commitment. In particular, this presentation does not constitute an offer to sell, or a solicitation of an offer to buy, any securities in the United States. This presentation may not be distributed or released in the United States. The securities referred to in this presentation have not been, and will not be, registered under the US Securities Act of 1933 ("**US Securities Act**") or the securities laws of any state or other jurisdiction of the United States and may not be offered or sold, directly or indirectly, in the United States unless the securities have been registered under the US Securities Act or are offered and sold in a transaction exempt from, or not subject to, the registration requirements of the US Securities Act and any other applicable securities laws. The distribution of this presentation in jurisdictions outside Australia may be restricted by law and you should observe any such restrictions. Any failure to comply with such restrictions may constitute a violation of applicable securities laws. By accepting this presentation, you represent and warrant that you are entitled to receive such presentation in accordance with the above restrictions and agree to be bound by the limitations contained therein.

An investment in shares in BikeExchange is subject to known and unknown risks, some of which are beyond the control of BikeExchange, including possible loss of income and principal invested. BikeExchange does not guarantee any particular rate of return or the performance of BikeExchange, nor does it guarantee any particular tax treatment. Investors should have regard to (amongst other things) the risk factors outlined in this presentation when making their investment decision. See the "Key Risks" section of this presentation for certain risks relating to an investment in BikeExchange shares.

Not financial product advice

This presentation is for information purposes only and it is not financial product nor investment advice (nor tax, accounting or legal advice) nor a recommendation to acquire BikeExchange shares and has been prepared without taking into account the objectives, financial situation or needs of recipients of this presentation. It is not intended that it be relied upon as advice to investors or potential investors, who should make their own enquiries and investigations regarding an investment in BEX and in relation to all information in this presentation (including but not limited to the assumptions, uncertainties and contingencies which may affect the future operations of BEX and the value and the impact that different future outcomes may have on BEX) and before making any investment decisions, should consider the appropriateness of the information having regard to their specific investment objectives, financial situation or particular needs and should seek independent professional advice appropriate to their jurisdiction. BEX is not licensed to provide, and this presentation does not constitute the provision of, investment or financial product advice in respect of BEX's shares. Cooling off rights do not apply to the acquisition of BEX shares.

Disclaimer (continued)

Financial data

All amounts are in Australian Dollars (\$) or AUD) unless otherwise indicated. A number of figures, amounts, percentages, estimates, calculations of value and fractions in this presentation are subject to the effect of rounding. Accordingly, the actual calculation of these figures may differ from the figures set out in this presentation. All references starting with "FY" refer to the financial year ending 30 June. For example, "FY22" refers to the financial year ending 30 June 2022.

Future Performance

Forward-looking statements are statements about matters that are not historical facts. Forward-looking statements appear in a number of places in this presentation and include statements regarding BEX's intent, belief or current expectations with respect to business and operations, market conditions, results of operations and financial conditions, including, without limitation, forecasted economic indicators and performance metric outcomes. This presentation contains words such as 'will', 'may', 'expect', 'indicative', 'intend', 'seek', 'would', 'should', 'could', 'continue', 'plan', 'probability', 'risk', 'forecast', 'likely', 'estimate', 'anticipate', 'believe', or similar words to identify forward-looking statements. Indications of, and guidance or outlook on, future earnings or financial position or performance are also forward-looking statements. These forward-looking statements reflect BEX's current views with respect to future events and are subject to change, certain risks, uncertainties and assumptions which are, in many instances, beyond the control of BEX, and have been made based upon BEX's expectations and beliefs concerning future developments and their potential effect on BEX. There can be no assurance that future developments will be in accordance with BEX's expectations. A number of important factors could cause BEX's actual results to differ materially from the plans, objectives, expectations, estimates and intentions expressed in such forward-looking statements, including but not limited to, general economic conditions in Australia and other jurisdictions in which BEX or its related bodies corporate operate; exchange rates; competition in the markets in which BEX will operate, the inherent regulatory risks in the businesses of BEX and the duration of the COVID-19 pandemic. Assumptions on which forward-looking statements in this presentation are based may or may not prove to be correct and there can be no assurance that actual outcomes will not differ materially from these statements. None of the Associated Persons nor any other person referred to in this presentation makes any representation as to the accuracy or likelihood of fulfilment of the forward-looking statements or any of the assumptions upon which they are based. When relying on forward-looking statements to make decisions with respect to BEX, investors and others should carefully consider such factors and other uncertainties and events.

BEX is under no obligation to update any forward-looking statements contained in this presentation, as a result of new information, future events or otherwise, after the date of this presentation. As such, undue reliance should not be placed on any forward-looking statement. To the maximum extent permitted by law, BikeExchange and its related bodies corporate, officers, employees, agents and advisers nor any other person referred to in this presentation (the **"Limited Parties"**):

- disclaim any obligations or undertaking to release any updates or revisions to the information to reflect any change in expectations or assumptions or as a result of new information, future events or otherwise;
- do not make any representation or warranty, express or implied, as to the accuracy, reliability, fairness or completeness of such information, or likelihood of fulfilment of any forward-looking statement or any event or results expressed or implied in any forward-looking statement; and
- disclaim all responsibility and liability for these forward-looking statements (including, without limitation, liability for negligence).

Past performance information given in this presentation is given for illustrative purposes only and is not necessarily a guide to future performance and no representation or warranty is made by any person as to the likelihood or achievement or reasonableness of any forward-looking statements, forecast financial information or future share price performance. Nothing contained in this presentation nor any information made available to you is, or shall be relied upon as, a promise, representation, warranty, or guarantee as to the past, present or the future performance of BikeExchange.

Disclaimer

No representation or warranty, express or implied, is made as to the accuracy, completeness, reliability or fairness of the information, opinions and conclusions contained in this presentation. Any information in this presentation is made only at the date of this presentation, and opinions expressed reflect BEX's position at the date of this presentation, and are subject to change. BEX is under no obligation to update this presentation. No assurance is given by BikeExchange that the Initial Placement or any other transaction referred to in this presentation will proceed and BikeExchange reserves its rights to withdraw or vary the transactions described in this presentation without notice.

Neither BEX, its related bodies corporate, shareholders or affiliates, nor any of their officers, directors, employees, affiliates, agents, contractors, advisers or any other associated persons (collectively, **"Associated Persons"**) represents or warrants in any way, express or implied, that the information, opinions, conclusions or other information contained in this presentation, any of which may change without notice, is fair, accurate, complete, reliable, up to date or correct. BEX does not represent or warrant that this presentation is complete or that it contains all material information about BEX or which a prospective investor or purchaser may require in evaluating a possible investment in BEX or an acquisition or other dealing in BEX shares. To the maximum extent permitted by law, BEX and its Associated Persons each expressly disclaims and excludes all direct, indirect, consequential or contingent loss, damage or liability (including, without limitation, any liability arising from fault or negligence) that may arise from, or is connected to, this presentation, or the use of this presentation, or any other written or oral information provided by or on behalf of BEX, including representations or warranties or in relation to the accuracy or completeness of the information, statements, opinions or matters, express or implied, contained in, arising out of or derived from, or for omissions from, this presentation including, without limitation, any financial information, any estimates or projections and any other financial information derived therefrom.



BIKEEXCHANGE (ASX: BEX)

Overview

BikeExchange overview

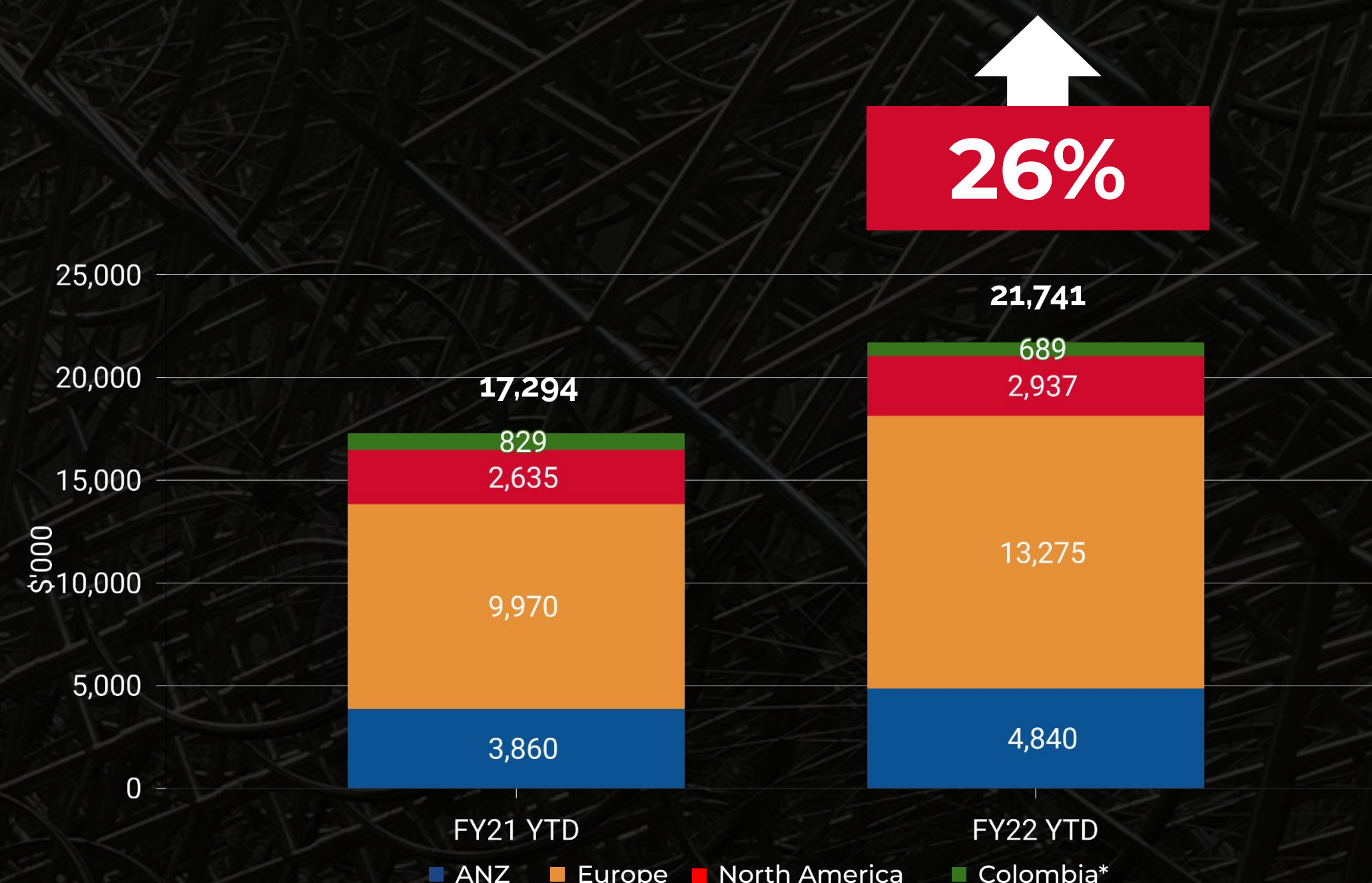
WORLD'S LEADING BICYCLE MARKETPLACE

- **BikeExchange** is one of the world's largest online cycling marketplaces.
- Operations: 8 countries & 4 hubs - ANZ, North America, Europe (Germany, Belgium & Netherlands), LatAm (Colombia¹).
- Enabling our network of brands, retailers and distributors to connect via single destination marketplaces.
- Executive team and global functional lead structure now in place, across Customer, Seller & Operations.
- Acquisition of Kitzuma in Dec 2021 offers key value-add service with delivery of 'ready to ride' bikes. Influence being demonstrated in North American market within industry and BikeExchange
- Partnership with North American electric mobility company, Simply EV, will give BikeExchange greater exposure to the fast growing e-mobility sector.
- Strategic shift to focus on e-Commerce first strategy and replicating the proven and successful BikeExchange European model into all regions.

KEY 9M YTD FY22 HIGHLIGHTS



LOOKTHROUGH TOTAL TRANSACTION VALUE² BY GEOGRAPHY – Q3 YTD FY22



1. All countries are 100% owned except for Colombia* (which was 50% Joint Venture until 2 March 2022 and then owned 100%). 2. Lookthrough Total Transaction Value and Revenue includes 50% of BikeExchange Colombia's TTV up to 2 March 2022, and 100% from then on.

All metrics above are for Q3 YTD FY22 vs pcp (active accounts as at 31 March 2022 vs 31 March 2021) and exclude BikeExchange Colombia except for Active Accounts or those marked as lookthrough. See page 27 for metric definitions.



BIKEEXCHANGE (ASX: BEX)

Capital Raise

Capital Raise

Capital Raise

- A Placement raising \$347,863 from Institutional, sophisticated and professional investors (Placement) at an issue price of A\$0.02 (2 cents) per New Share (Offer Price); and
- A Non-Renounceable Entitlement issue of one (1) new BikeExchange share (New Share) for every one (1) existing BikeExchange share held by eligible shareholders on the Record Date, at an issue price of A\$0.02 (2 cents) per New Share (Offer Price) to raise approximately A\$6,000,000 (before costs) (Entitlement Offer).
- Based on the bookbuild process, BikeExchange has received strong indicative support from existing shareholders and potential new investors for the Entitlement Offer. BikeExchange has the ability to place any Shortfall funds to new investors within 3 months of the Entitlement Offer.
- BikeExchange is continuing to evaluate its funding options and is in discussions with a number of potential investors regarding a proposed convertible note issue to raise up to \$5 million on terms to be finalised. BikeExchange will keep the market informed of any material developments in accordance with its continuous disclosure obligations.

Use of funds

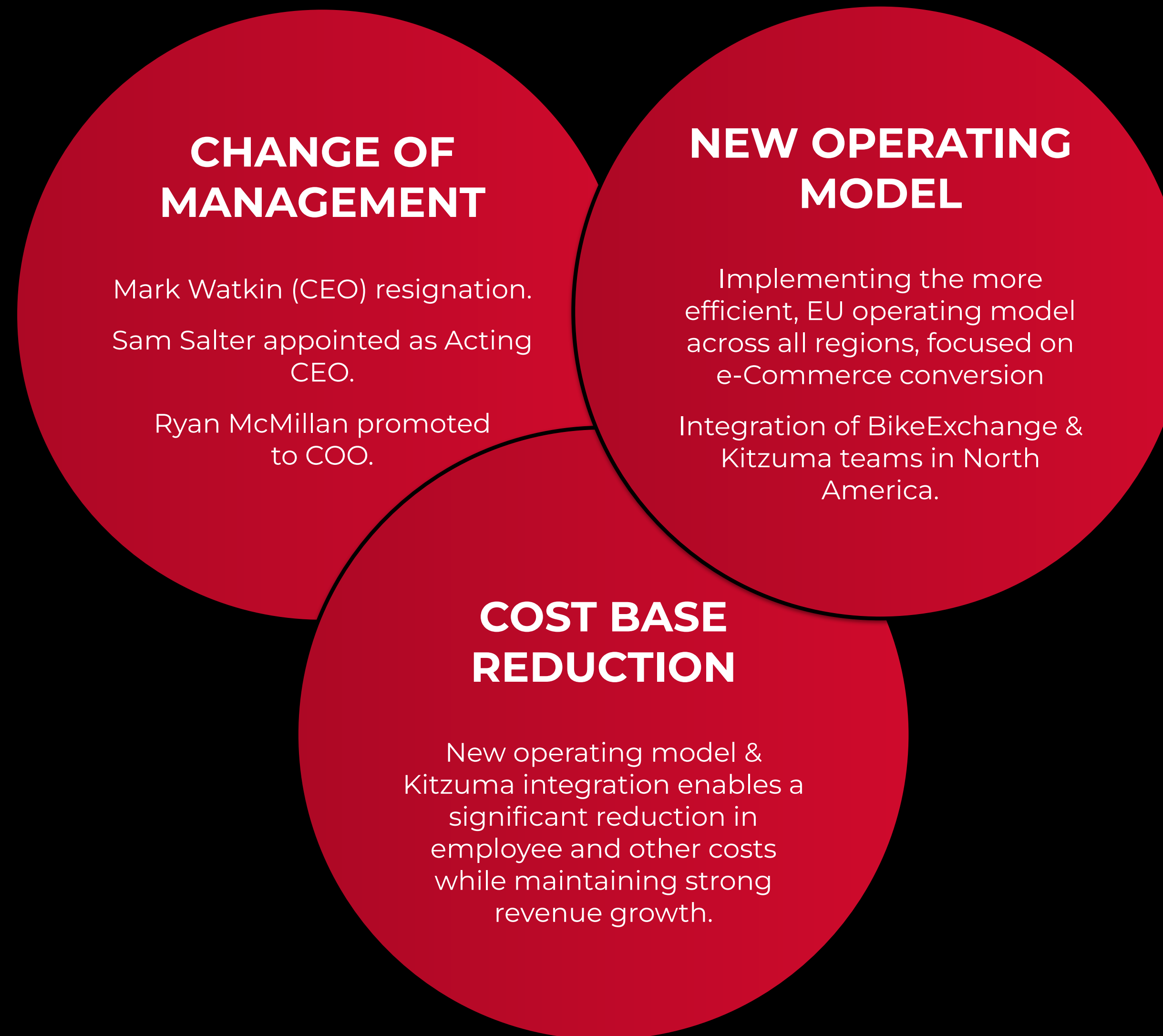
- Use of funds to support working capital and additional organic growth initiatives.



BIKEEXCHANGE (ASX: BEX)

Operating Update

Operating Update



Q4 Management Update

01

Mark Watkin CEO resignation

- After his 5-year tenure as CEO we thank Mark for all of his inputs and efforts.

02

Sam Salter (BA) Acting CEO

- The process to find a permanent CEO will start immediately. In the meantime Sam Salter will step in as acting CEO.
- Sam is a Co-Founder of BikeExchange. His innate knowledge of the BEX business and the bicycle industry as a whole well positions him to see the business through this next phase.
- Sam will continue to have a focus on driving strategic partnerships with major industry brands.

03

Ryan McMillan (CA) COO

- Aligned with our pre-planned rollout of the new operating model, Ryan has been promoted to COO.
- Ryan has been with BikeExchange for over 10 years and founded our European region. He is deeply attuned to the BEX business.
- Over recent years he has fine-tuned our EU operations, leading the region to become our most successful and highest performing. It is this operating model that we are rolling out globally, led by Ryan.

04

Taylor Essick Head of North America

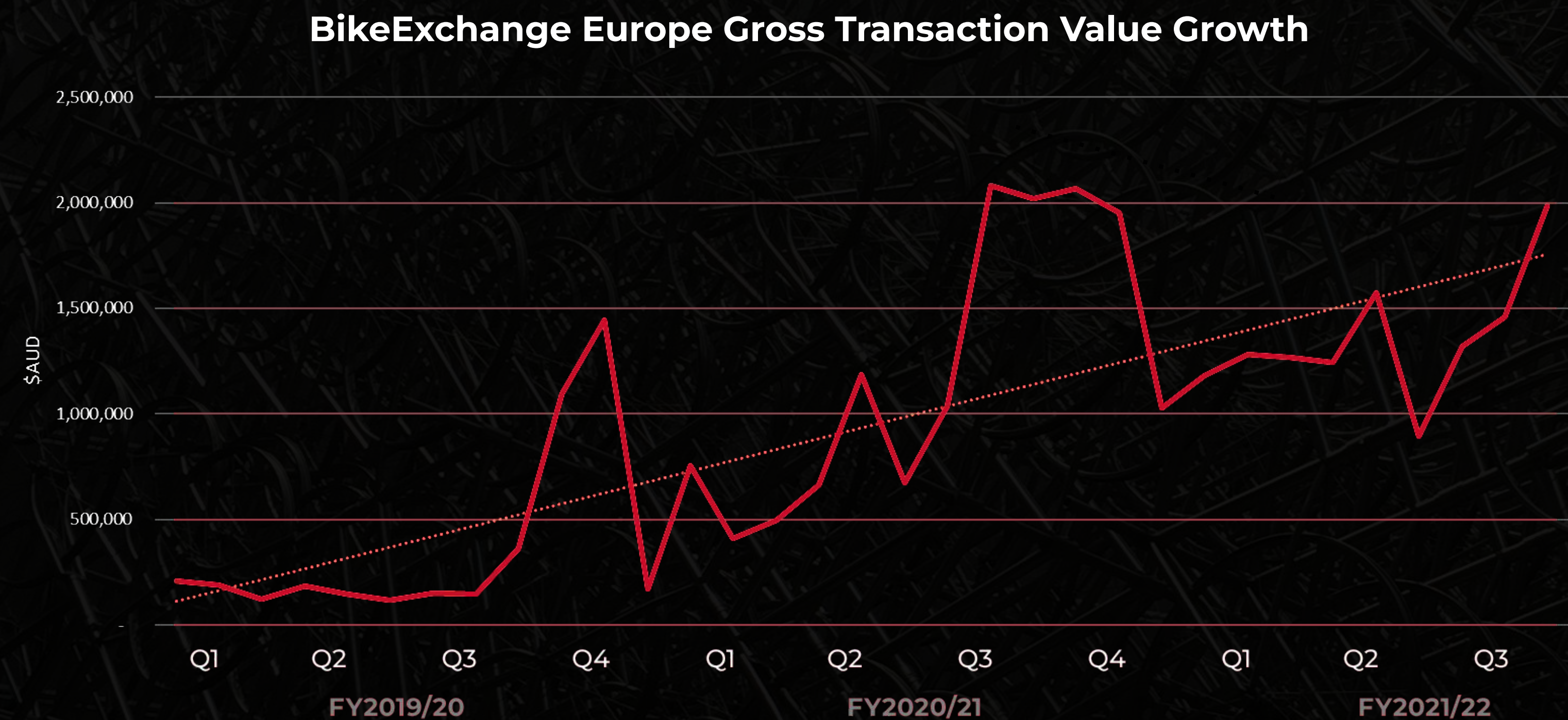
- Taylor Essick, co-founder and CEO of Kitzuma has a deep knowledge of the industry and the opportunities we collectively have across BEX and Kitzuma. Taylor will extend his role across the North American region to the combined BEX and Kitzuma businesses.
- Taylor will have particular focus on industry, sales and strategy across the business.

05

Strong Leadership Team

- Sam and Ryan will continue to be supported by the existing leadership team:
 - Rebecca Boxall - Chief Customer Officer.
 - Joe McArdle - Global Head of Seller & Merchant Success.
 - Regional Leads - Felipe Arango (Colombia), Andreas Liertz (EU), Taylor Essick (NA).

e-Commerce growth & BikeExchange EU model replication



- Applying the learnings, skills and processes from EU to other regions - across:
 - Merchandising of product and ensuring accuracy of availability.
 - POS integrations of product and data mapping.
 - A bike first e-Commerce approach.
 - e-Commerce enablement of sellers vs enquiries.
- AU has strong conversion potential with larger enquiry-only listings - 100% focus on e-Commerce and bike-first trading.
- A unified model also enables greater centralisation, with team members working across multiple brands and regions. This creates resource efficiencies at both management and team levels.

Applying the same growth profile as BEEU between Q3 FY19 and Q3 FY23 could see a 114% CAGR lift in combined annual e-Commerce revenue for NA and AU to \$5.4m from \$0.6m.

BikeExchange NA and Kitzuma integration

- The Kitzuma "Ready to Ride" shipping proposition is compelling in the market and will drive more e-Commerce transactions for BikeExchange.
- To date we have already been working together across BikeExchange and Kitzuma with success. We are bringing the BikeExchange and Kitzuma team closer together across key skills and disciplines - particularly Sales, Customer Service, Seller Success, Finance and Technology. This will deliver significant cost efficiencies across the North American region.
- Concentrating on the same seller base will be an increased focus for the team. This includes quality brands and sellers with strong e-commerce desires and shipping potential.
- Taylor Essick, Co-Founder and CEO of Kitzuma will extend his role across the North American region over the combined BEX and Kitzuma businesses. Taylor has a deep knowledge of the industry, how it's transforming and the opportunities presented across BEX and Kitzuma. Taylor will have particular focus on industry, sales and strategy across the business.

Core BEX Cost Base Reductions

BikeExchange Core Operation Cost savings

Cost Type	A\$m
Employee Costs	3.9
Marketing Costs	0.9
Other Costs	0.7
Total	5.5

- Underlying cost savings of \$5.5m anticipated to be achieved in FY23 vs FY22 H2 existing cost base run-rate.
- This represents around a third of the FY22 core BEX base (on a reported basis, including corporate and head office costs).
- Employee costs savings reflect the like for like reduction of 20 roles across the business compared to FY22, with associated reductions in employee overhead costs and incentive payments. This is enabled by further centralisation of operations and focus on leveraging the successful EU operating model.
- Marketing costs reflect anticipated marketing efficiency improvements on increase gross e-commerce transaction value with marketing costs to reduce from ~8% of gross transaction value to under 6%.
- Other costs reductions are across a range of overheads including property costs, corporate costs, travel and IT related spend.

Operating Model Update & Focus Update

01

Replicate successful EU model into other regions

- Applying the learnings, skills and processes to other regions.
- Further centralisation of skills and team.
- AU has strong conversion potential with larger enquiry-only listings.
- Applying the same growth profile as BEEU over the last 3 years could see a 114% CAGR lift in combined e-Commerce revenue for NA and AU to \$5.4m from current \$0.6m.

02

Integrating Kitzuma into operations to drive growth

- Active partnership discussions for Kitzuma to finalise and assist with achieving gross margin break even point by Q1 FY23.
- Focused on integrating teams and skills in North America so the proposition across BEX and Kitzuma is unified.

03

Reducing operating costs and driving e-Commerce first model

- \$5.5m of operating cost reductions identified and being implemented in Q4 for FY23 + BENA / Kitzuma realised cost synergies.
- e-Commerce first skills a priority in the business matching new e-Commerce operating model, replicating EU template.

04

Activating more strategic partnerships to support e-Commerce strategy

- Leverage the Kitzuma service & BikeExchange through partnerships.
- Execute Simply EV / Revolution Brands operational partnership.
- Discussions across industry and strategic partnerships with potential capital, with a view to finalise in the near term.

Expected pathway to profitability by FY25

Target revenue CAGR of greater than 80% over next 3 years

Summary & Outlook

**Replicate
successful EU
model into other
regions**

**Integrating
Kitzuma into
operations to
drive growth**

**Activating more
strategic
partnerships to
support
e-Commerce
strategy**

**Focus on
reducing
operating costs
& driving
e-Commerce
first**

- Q4 FY22 trading into April 2022 is indicating a positive trend with e-Commerce volumes showing growth on pcp in the European region's seasonally strong months. Kitzuma trading and performance is seeing continued positive growth with seller volumes of shipments increasing.
- Replication of the e-Commerce first BikeExchange model is being successful in the EU, across our other markets.
- Integrating Kitzuma more deeply into our operations will drive transaction volumes and expand customer relationships in the large North American market.
- Activating partnerships such as the recently announced Simply EV relationship will provide further support for our e-Commerce first strategy. The Group continues with a number of other advanced discussions with global strategic partnership opportunities that include strategic capital injections to further scale the business and network.
- We have identified meaningful operating cost reductions and are implementing these in Q4 and realising cost synergies from the Kitzuma acquisition.
- Under our pathway to profitability plan, we are targeting revenue CAGR of greater than 80% over the next 3 years in order to achieve profitability in FY25.
- TTV and revenue growth rates for FY22 are expected to be significantly above FY21. Including the acquisitions of Kitzuma and BikeExchange Colombia, the Company anticipates achieving FY22 revenues that are broadly in line with consensus revenue expectations of \$7.5m.



BIKEEXCHANGE (ASX: BEX)

Appendix

Foreign Selling Restrictions

This document does not constitute an offer of new ordinary shares ("New Shares") of BikeExchange in any jurisdiction in which it would be unlawful. In particular, this document may not be distributed to any person, and the New Shares may not be offered or sold, in any country outside Australia except to the extent permitted below.

Hong Kong

WARNING: This document has not been, and will not be, registered as a prospectus under the Companies (Winding Up and Miscellaneous Provisions) Ordinance (Cap. 32 of the Laws of Hong Kong), nor has it been authorised by the Securities and Futures Commission in Hong Kong pursuant to the Securities and Futures Ordinance (Cap. 571 of the Laws of Hong Kong) (the "SFO"). No action has been taken in Hong Kong to authorise or register this document or to permit the distribution of this document or any documents issued in connection with it. Accordingly, the New Shares have not been and will not be offered or sold in Hong Kong other than to "professional investors" (as defined in the SFO).

No advertisement, invitation or document relating to the New Shares has been or will be issued, or has been or will be in the possession of any person for the purpose of issue, in Hong Kong or elsewhere that is directed at, or the contents of which are likely to be accessed or read by, the public of Hong Kong (except if permitted to do so under the securities laws of Hong Kong) other than with respect to the New Shares that are or are intended to be disposed of only to persons outside Hong Kong or only to professional investors (as defined in the SFO and any rules made under that ordinance). No person allotted the New Shares may sell, or offer to sell, such securities in circumstances that amount to an offer to the public in Hong Kong within six months following the date of issue of such securities.

The contents of this document have not been reviewed by any Hong Kong regulatory authority. You are advised to exercise caution in relation to the offer. If you are in doubt about any contents of this document, you should obtain independent professional advice. This document may not be reproduced in any form or transmitted to any person other than the person to whom it is addressed.

New Zealand

This document has not been registered, filed with or approved by any New Zealand regulatory authority under the Financial Markets Conduct Act 2013 (the "FMC Act"). The New Shares are not being offered or sold in New Zealand (or allotted with a view to being offered for sale in New Zealand) other than to a person who:

- is an investment business within the meaning of clause 37 of Schedule 1 of the FMC Act;
- meets the investment activity criteria specified in clause 38 of Schedule 1 of the FMC Act;
- is large within the meaning of clause 39 of Schedule 1 of the FMC Act; • is a government agency within the meaning of clause 40 of Schedule 1 of the FMC Act; or
- is an eligible investor within the meaning of clause 41 of Schedule 1 of the FMC Act.

Singapore

This document and any other materials relating to the New Shares have not been, and will not be, lodged or registered as a prospectus in Singapore with the Monetary Authority of Singapore. Accordingly, this document and any other document or materials in connection with the offer or sale, or invitation for subscription or purchase, of New Shares, may not be issued, circulated or distributed, nor may the New Shares be offered or sold, or be made the subject of an invitation for subscription or purchase, whether directly or indirectly, to persons in Singapore except pursuant to and in accordance with exemptions in Subdivision (4) Division 1, Part XIII of the Securities and Futures Act, Chapter 289 of Singapore ("SFA"), or as otherwise pursuant to, and in accordance with the conditions of any other applicable provisions of the SFA.

This document has been given to you on the basis that you are (i) an existing member of the Company, (ii) an "institutional investor" (as defined in the SFA) or (iii) an "accredited investor" (as defined in the SFA). In the event that you are not an investor falling within any of the categories set out above, please return this document immediately. You may not forward or circulate this document to any other person in Singapore.

Any offer is not made to you with a view to the New Shares being subsequently offered for sale to any other party. There are onsale restrictions in Singapore that may be applicable to investors who acquire New Shares. As such, investors are advised to acquaint themselves with the SFA provisions relating to resale restrictions in Singapore and comply accordingly.

United States

This presentation does not constitute an offer to sell, or the solicitation of an offer to buy, any securities in the United States. The New Shares to be offered and sold in the Offer have not been, and will not be, registered under the U.S. Securities Act 1933, as amended ("U.S. Securities Act"), or the securities laws of any state or other jurisdiction of the United States, and may not be offered and sold to, directly or indirectly, any person in the United States except pursuant to an exemption from, or in a transaction not subject to, the registration requirements of the U.S. Securities Act and applicable U.S. state securities laws. There will not be a public offer of the New Shares in the United States. This presentation may not be distributed or released in the United States.

Key Risks

Introduction

This section outlines some of the key risks associated with an investment in BikeExchange shares. This is not an exhaustive list of the relevant risks and the risks set out below are not in order of importance.

Additional risks not presently known to BikeExchange, or that are not presently considered by BikeExchange to be material, may also become important factors that adversely affect BikeExchange. If any of the following risks materialise, BikeExchange's business, financial condition and financial performance, and the price of its shares may be adversely affected. Investors should note that the occurrence or consequences of some of the risks described in this section are partially or completely outside of the control of BikeExchange, its directors and senior management.

Before making any investment decision, potential investors should read this presentation in its entirety and carefully consider the risks outlined in this section. You should also read this presentation in conjunction with BikeExchange's other periodic and continuous disclosure announcements lodged with the Australian Securities Exchange ("ASX"), which are available at www.asx.com.au (ASX:BEX). You should also have regard to your own investment objectives, financial situation and particular needs, and consider consulting your financial or legal adviser for professional guidance.

The risks are categorised as follows:

1. Key Business Risks; and
2. General Risks.

References to BikeExchange in the key risks section of this presentation include BikeExchange and its related bodies corporate (as defined in the Corporations Act), where the context requires.

Key Risks (continued)

1. Key Business Risks

Topic	Summary
Growth and profitability dependent on active community	BikeExchange's future growth and profitability is dependent upon consumers and retailers utilising the marketplace. If retailers do not renew their subscriptions or consumers do not purchase products, this will affect financial performance.
Customer growth	BikeExchange's revenues depend upon attracting and retaining customers to its platform. A decline in traffic coming to the BikeExchange platform or the rate of conversion could adversely impact on its financial performance and operations.
Fraud perpetrated and fictitious transactions	BikeExchange may face fraudulent activities on the marketplace resulting in goods or payment not being received by buyers or sellers. Negative publicity and user sentiment generated as a result could severely diminish consumer confidence and impact business engagement and performance
Platform Risks	The BikeExchange platform is critical to attracting and retaining customers and maximising sales conversion. Any irrecoverable loss would incur a financial cost. Further, if there is a disruption in hosting services, BikeExchange's platform may not be accessible to users.
Reliance on third party technology providers	The BikeExchange platform and other information technology systems are all hosted on servers owned by third party providers. Thus, the platform may experience interruptions from system failures, service outages or similar resulting in delays or unavailability. BikeExchange's service offering may also become outdated or obsolete through the introduction of superior technology and/or product offerings.
Cybersecurity and data protection	BikeExchange collects and holds a large amount of personal information about its sellers and customers. BikeExchange's systems may fail or be subject to disruption as a result of external threats or system errors. This could result in reputational damage, a loss of system integrity and/or breach of BikeExchange's obligations under applicable privacy laws.
Intellectual property	The commercial value of BikeExchange's intellectual property is dependent in part on operational procedures to maintain confidentiality. BikeExchange's intellectual property may be compromised by breach or misappropriation by an employee or a third party gaining insights or developing competitive technology. Third parties may claim that the technology used in the operation of the BikeExchange platform infringes on their intellectual property rights. BikeExchange may become the subject of a claim that results in litigation or a dispute, which in turn, may result in high legal costs.
Competition	Existing competitors or new entrants in the market may increase the competitive landscape and in turn, erode BikeExchange's revenue and market share. BikeExchange may be unable to respond to such competitive pressures which in turn will adversely impact BikeExchange's operational and financial performance.
BikeExchange may not identify, execute and realise benefits from acquisitions or strategic partnerships	BikeExchange may not be successful in identifying attractive opportunities. There is also a risk that BikeExchange will not successfully integrate new businesses or assets into its existing operations in a timely manner, or that new businesses or assets do not result in the benefits anticipated.
Key personnel	The departure of key personnel, or a shortage of skilled employees with adequate expertise, could adversely affect the business and/or its future ability to pursue its growth strategies, as under-resourcing can cause development delays and reduce the speed at which BikeExchange is able to deliver new features or enhancements to the market.
Challenges in expanding cross-border operations	As BikeExchange plans to continue expanding its cross-border operations into existing and new markets, there is a risk that BikeExchange may face challenges (including legal or regulatory) in which it has limited or no experience in dealing with. BikeExchange may be unable to anticipate competitive conditions or could face other difficulties in attracting a sufficient number of retailers and consumers in those new markets.
Foreign exchange rate fluctuation	As BikeExchange has operations in various jurisdictions, the revenues of entities in the BikeExchange group are collected in different currencies. This exposes BikeExchange to fluctuations in exchange rates, which is beyond BikeExchange's control. This could adversely impact the profitability of BikeExchange's foreign operations.
Marketplacer contractual risk	As BikeExchange licences its platform from Marketplacer and relies on Marketplacer for the provision of certain services to operate the platform, there is a risk that should these services not be available then BikeExchange will have difficulty operating until such time as that technology and services were replaced.
Additional requirements for capital	The Company's capital requirements depend on numerous factors. Depending on the Company's ability to generate income from its operations, the Company may require further financing in addition to amounts raised under the Offer. Any additional equity financing will dilute shareholdings, and debt financing, if available, may involve restrictions on financing and operating activities. If the Company is unable to obtain additional financing as needed, it may be required to reduce the scope of its operations and may be prevented from progressing the commercialisation of its technology. There is however no guarantee that the Company will be able to secure any additional funding or be able to secure funding on terms favourable to the Company.

Key Risks (continued)

2. General Risks

Topic	Summary
General market and share price risks	There are general risks associated with any investment in the share market. The price of BikeExchange shares may increase or decrease due to a number of factors. Those factors include fluctuations in domestic or global financial markets and general economic conditions, including interest rates, inflation rates, exchange rates, commodity and oil prices, changes to government fiscal, monetary or regulatory policies, legislation or regulation, the removal or inclusion of BikeExchange from market indices, and the nature of markets in which BikeExchange operates.
Tax and accounting	Australian accounting standards and tax laws (including GST and stamp duty taxes), or the way they are interpreted, are subject to change from time to time, which may impact BikeExchange's financial position or performance.
Dividends	There are a range of factors that determine the payment of dividends on BikeExchange shares. These include the profitability of the business, its cash reserves, future capital requirements and obligations under debt facilities. BikeExchange's Board will determine any future dividend levels based upon its operating results and financial standing at the time. There is no guarantee that any dividend will be paid by BikeExchange.
Litigation	Legal proceedings and claims may arise from time to time in the ordinary course of BikeExchange's business and may result in high legal costs, adverse monetary judgments and/or damage to BikeExchange's reputation which could have an adverse impact on BikeExchange's financial position or performance and the price of its shares.
Forward-looking information	The forward-looking statements, opinions and estimates provided in this presentation rely on various contingencies and assumptions. Various factors and risks, both known and unknown, many of which are outside the control of BikeExchange, may impact upon the performance of BikeExchange and cause actual performance to vary significantly from expected results. There can be no guarantee that BikeExchange will achieve its stated objectives or that forward-looking statements or forecasts will provide to be accurate.
Other risks	For further information in relation to other risks which might affect BikeExchange, please refer to BikeExchange's 2021 Annual Report announced to market on 27 August 2021.

A leading competitive position

The cycling category is experiencing a once in a generation revolution

BEX is the world's largest network of cycling focused marketplaces

Diversified business with significant growth potential

- Global cycling market worth over \$80 billion.
- The micromobility category is set to grow to US\$198 billion by 2030[#].
- Continued consumer take up and growth in the mass market - outside of sport related cycling.
- Shaped by continued government investment in cycling infrastructure - cycling an active transport solution.
- Increased proactive awareness by consumers on the environmental, health & convenience aspects of cycling.
- 5.8 million* Australian adults (29% of adults between 18 & 90) spent money on cycling in 2020.

- BEX has the first mover advantage, built over a decade. 1,784 active accounts* and growing, in a four region market worth over \$15 billion.
- An established presence with a 28 million+ audience* across ANZ, Europe, North America and Colombia, to scale with capital deployment.
- Established relationships with a network of brands, retailers and sellers, delivering a compelling customer value proposition.
- Strong scalable technology foundation already in place.

- e-Commerce enabled marketplace model with diverse revenue model, and significant room to extend.
- Strong growth metrics established to date with selective capital deployment showing strength of our model.
- Key acquisition in Q2 FY22 of Kitzuma, a logistics business for the delivery of 'ready to ride' bikes from retailers to customers.
- Partnership with electric mobility company, Simply EV, announced in Q4 FY22 will add a key retailer to BikeExchange's global network, provide further opportunities for Kitzuma and strengthen our North American presence.

* Active Accounts as at 31 March 2022. Audience reflects annual traffic sessions for the FY21 year. Refer to basis of preparation of page 27 for metric definitions.

+ Australian Cycling Economy Report Published October 2021 by EY and We Ride.

[#]Precedence Research, 'Micro-mobility Market Size to Surpass US\$ 198.03 Bn by 2030', January 2022

Q3 FY22 YTD Summary & Highlights

- **Europe (EU)** continues to grow in the current climate with 33% TTV growth for Q3 gM YTD FY22 vs pcp.
 - TTV was down 7% on Q3 FY21, due a softer January and February due to some supply issues and seasonality. March trading was one of the strongest months on record.
 - Trend continued into April with the seasonally strong months into June.
- **Australia (AU)** recorded solid e-Commerce transaction volumes driving 9% TTV growth for Q3 FY22 vs pcp and 25% growth vs Q3 gM FY21 as more sellers joined the platform.
 - Average Order Value (AOV) has increased 15 % in Q3 FY22 YTD driven by a greater portion of sales of bikes.
- **North America (NA)** delivered 25% TTV growth for Q3 and 11% increase on Q3 YTD FY21, driven by the addition of Kitzuma revenue.
 - Average Order Volume (AOV) increasing 71% to \$1,441 driven by more bikes being sold.
- **Kitzuma** is progressing well with a record month of shipments in March delivering 33% month on month growth.
 - Annualised shipments now total 7,800.
 - Positive impact from a brand partnership and e-commerce of bikes in NA. Some phasing on partnership onboarding into Q4 FY22.
- **Colombia (COL)** TTV decreased by 17% for Q3 YTD FY22 driven by stock issues and payment gateway problems, however TTV is up 53% compared to Q3 FY21, in part due to the acquisition.
- **Website traffic** globally is down in Q3 by 27% vs PCP as post Covid traffic normalises to prior levels. This is countered by conversion increasing 38% YTD to 0.19% and 16% for Q3 driven mainly by stock availability, implementation of customer experience improvements and performance marketing.
 - While transactions for Q3 are down on pcp, AOV is up 9% for Q3 to \$817 globally, driven by the focus on bikes.

North America improved trading. Kitzuma influence with partners being felt.

Europe continues good performance. e-Commerce & Bike First strategy model executed.

Kitzuma delivered record monthly shipments

**Traffic reduction & normalisation
Conversion and AOV increased**

**Australia delivered transaction growth
More active sellers on platform**

Robust growth across most key metrics FY22 Q3 YTD

\$21.7m
↑ 26%

Lookthrough TTV*

\$4.5m
↑ 31%

Lookthrough Revenue*

0.19%
↑ from 0.14%

Traffic conversion

\$0.5m

Logistics revenue

\$2,794
↑ 8%

ARPA

26,096
↑ 5%

e-Commerce transactions

\$696
↑ 19%

Average Order Value

1,661

Logistics shipments

Over \$0.89b
↓ 33%

Enquiry value*

7.5%
↑ from 7.3%

Average Commission Rate

1,784
↑ up 9%

Active Retail Accounts*

↑ **Up 33% Mar 22
on Feb 22**

Logistics shipments

* All metrics for the 9 month period to 31 March 2022 vs the comparable period in FY21 and unless otherwise stated by * (enquiry value and active retail accounts) or defined as lookthrough metrics exclude BikeExchange Colombian for the full period. Refer to basis of preparation of page 27 for metric definitions. Active Retail Accounts increase of 9% vs 31 March 2021.

Kitzuma progress & Q3 Update

- Achieved a run rate of ~**AU\$2.3 million annualised sales** (based on March 2022) with shipment rates accelerating 33% growth month on month to March 2022 which was a record month.
- Annualised shipment run-rate of 7,800 (based on March 2022) - off a base of 40+ active accounts.
- Growing brand sign ups accelerated over the last quarter. Strong brand growth potential is demonstrated through existing relationships with key brands such as Wahoo, 3T Ventum, Litespeed, Quintana Roo, LeMond, Alchemy and ENVE.
- Active partnership discussions for Kitzuma to finalise and assist with achieving gross margin breakeven point (~1,200 shipments / month) by Q1 FY23. Average shipment revenue over AUD\$300 per bike.
- Key partnership announced in April FY22 between electric mobility company, Simply EV and their portfolio of brands, and BEX presents another key growth opportunity for Kitzuma, given the assembly, delivery and servicing of e-bikes is a key difficulty in the customer journey.
- Kitzuma delivers across all major regions of North America with 90% + Coverage.
- Focused on integrating teams and skills in North America for a unified go to market proposition across BEX and Kitzuma in Q4 for FY23.

\$0.5m

Logistics revenue

1,661

Q3 Logistics shipments

**↑ Up 33% Mar 22
on Feb 22**

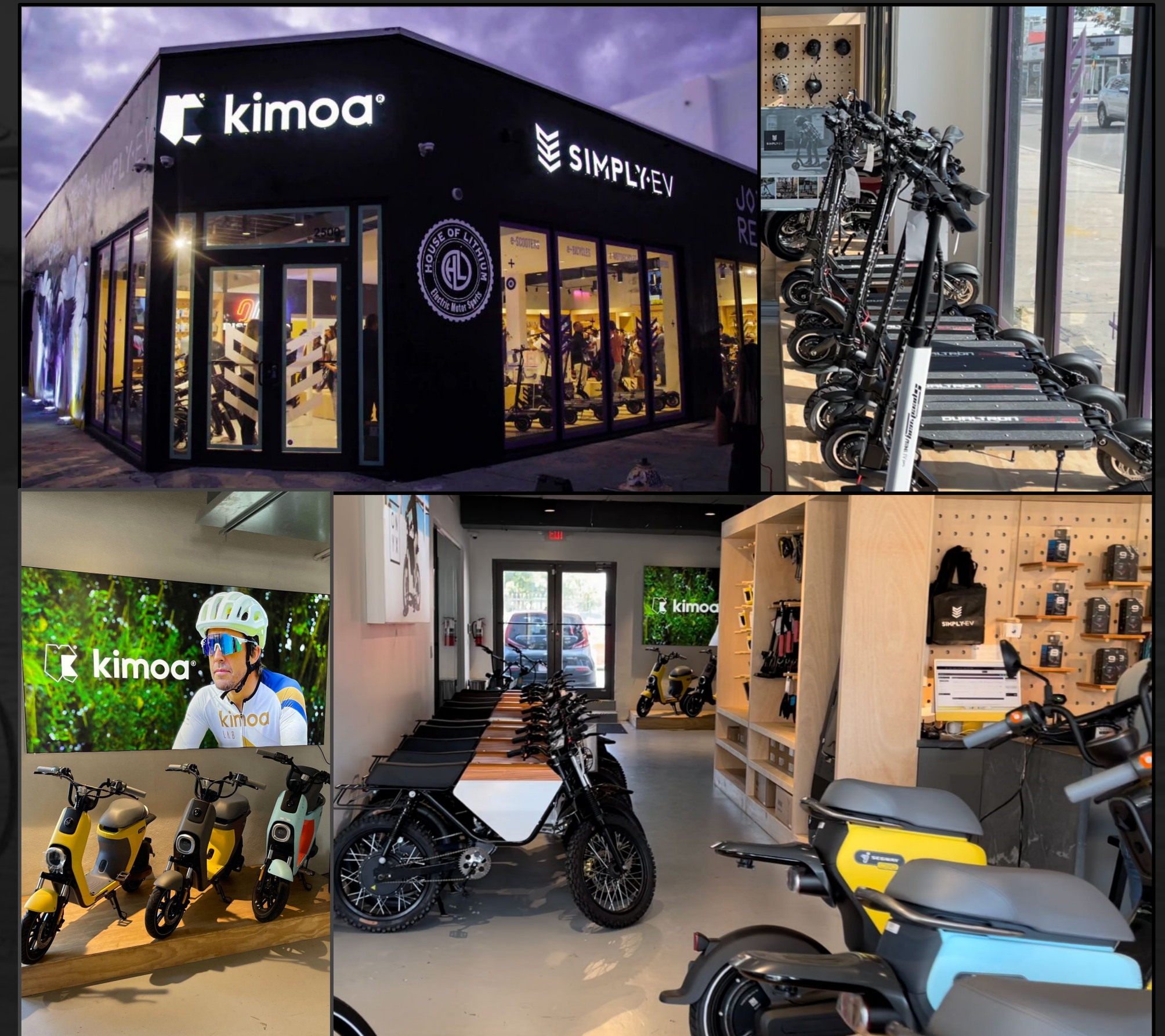
Logistics shipments

7,800

Annualised Shipment Rate

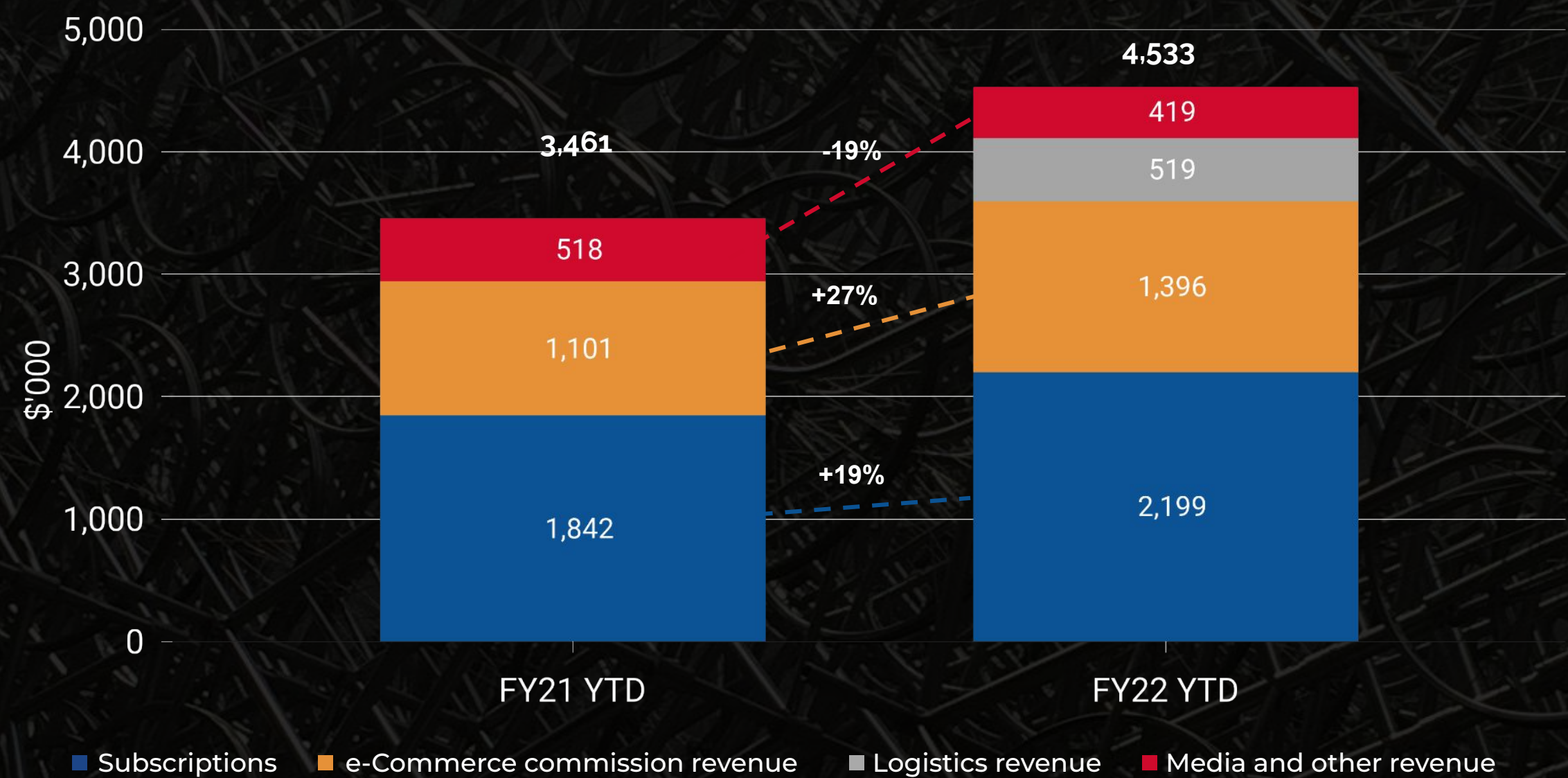
e-Mobility partnership announcement : Simply EV

- Announced partnership with Simply EV, North American e-mobility portfolio of brands and investment company (April 2022).
- Expands BikeExchange's e-bike customer base, driving higher revenue through larger transactions and offers greater exposure to the expanding micro mobility market which is set to grow to US\$198 billion globally by 2030*.
- Simply EV is part of Revolution Brands International, with an extensive portfolio of companies and brands in the electric mobility value chain including e-mobility retailer Simply EV, with 50+ retail and e-commerce stores in the US offering a mix of e-bikes, e-scooters, electric motorcycles, e-marine and accessories.
- Simply EV is the preferred retailer for active fashion brand, Kimoa, majority owned by Revolution Brands.
- Initially, the partnership will focus on onboarding all Simply EV brands and stores onto BikeExchange's platform, adding an important retailer to BikeExchange's growing network.
- Partnership will also leverage Kitzuma's capabilities, given the transport and assembly of e-bikes is a key difficulty in the customer journey.



TTV and revenue performance – Q3 FY22 & Q3 FY22 YTD

LOOKTHROUGH REVENUE BY CATEGORY Q3 YTD



Q3 YTD FY22 (9M) in \$ thousands	Australia and New Zealand	Europe	North America	Colombia ¹	Total
Lookthrough TTV	4,840	13,275	2,937	689	21,741
Growth on pcp	25%	33%	11%	(17%)	26%
Lookthrough Revenue	1,355	1,942	959	277	4,533
Growth on pcp	17%	33%	74%	(4%)	31%

1. Lookthrough TTV and revenue includes 50% of the BikeExchange Colombia's TTV and revenue respectively for all periods up to 2 March 2022, after which the Group acquired the remaining 50% and 100% of TTV and revenue is included respectively. Refer to basis of preparation on page 27.

Basis of preparation

BASIS OF PREPARATION

The information contained in this presentation is based on the historical financial information (BEX Financial Information) for the BikeExchange Group and should be read in conjunction with the BikeExchange Ltd FY21 Annual Report. It has not been reviewed or audited by the Group's auditor, Deloitte Touche Tohmatsu.

The BEX Financial Information in this presentation is that of BikeExchange Limited Group which is made up of a consolidation of all entities within the Group, except as specifically noted in this basis of preparation. The legacy BikeExchange Holdings Pty Ltd Group was acquired by BikeExchange Limited (previously RPro Holdings Ltd) on 5 February 2021, prior to the Group's listing on the ASX on 9 February 2021. The purpose of the BEX Financial Information is to show certain financial results of the Group for the 9 month financial period ending 31 March 2022 (Q3 YTD FY22) and 31 March 2021 as a comparative (Q3 YTD FY21).

BikeExchange Limited generated no revenues and acted as an investment holding company prior to the transaction with the BikeExchange Group and so the acquisition of the BikeExchange Holdings Pty Ltd Group by BikeExchange Limited is treated as a reverse acquisition for accounting purposes. Therefore this presentation presents the financial results of the BikeExchange Holdings Pty Ltd Group for Q3 YTD FY21 and the consolidated results of BikeExchange Limited and the BikeExchange Holdings Pty Ltd Group for Q3 YTD FY22.

The BEX Financial Information has been prepared and presented in accordance with the accounting policies set out in the FY21 Annual Report.

NON-AIFRS FINANCIAL INFORMATION

BikeExchange's results are reported under Australian International Financial Reporting Standards (AIFRS). This presentation also includes certain non-AIFRS measures including "KPIs", and "look through". These measures are used internally by management to assess the performance of our business and our Joint ventures, make decisions on the allocation of resources and assess operational management. Non-AIFRS measures have not been subject to audit or review. The following non-AIFRS measures are defined below:

- **Total Transaction Value (TTV)** is the aggregate of revenues, net of sales taxes, generated from display/media sales, retail subscriptions and other online sales and the gross merchandise value for e-Commerce transactions that are executed on the BikeExchange network of websites.
- **Lookthrough basis** - For equity accounted joint ventures and consolidated subsidiaries, add the total revenue or TTV within the reporting period multiplied by the Group's % ownership. All entities are owned 100% by the Group with the exception of the Group's interest in BikeExchange Colombia, which was 50% owned for all periods up to 2 March 2022 when the Group acquired the remaining 50% and consolidated 100% of the entity from that date.
- **Average Revenue per account (ARPA)** is the total revenue for the period for subscriptions earned from retailers and affiliates divided by the average number of paying retailers accessing BikeExchange network of websites for the period, and does not include revenues or accounts relating to BikeExchange's 50% interest in BikeExchange Colombia, prior to the completion of the acquisition on 2 March 2022.
- **Unique Monthly sellers (Sellers)** is the average number of retailers for the period who fulfilled at least 1 e-Commerce order in a individual month.
- **Traffic** represents total unique sessions visiting the Group's network of sites across the period.
- **E-commerce transactions** are the total number of e-Commerce transactions occurring on BikeExchange network of websites in each period. A transaction is defined as a single item or basket of items paid for in a single payment transaction through the BikeExchange network of websites.
- **Average Order Value (AOV)** is the gross merchandise value for e-Commerce transactions that transact on the BikeExchange network of websites divided by the number of e-Commerce transactions for the financial period.
- **Average Commission Rate** - calculated as e-Commerce commission revenue divided by the gross e-Commerce transaction value for all transactions across the relevant period.
- **Prior corresponding period (pcp)** means the equivalent period in the previous financial year.



**BIKE
EXCHANGE**

WHERE THE WORLD RIDES™

