

3 FEBRUARY 2020

## PLATINA STRIKES WIDE ZONES OF ZINC, GOLD AND SILVER MINERALISATION AT BLUE MOON.

**Platina Resources** has confirmed significant intersections of high-grade zinc, gold and silver mineralisation from the second hole completed at its Blue Moon zinc-copper-gold project in the United States.

Diamond drill hole BMZ80 has intersected the three following significant intervals:

- 19.58m at 8.41% zinc, 0.49% copper, 1.22 g/t gold and 82.75 g/t silver from 398.44m, including:
  - 1.26m at 4.57 % zinc, 0.37% copper, 6.71 g/t gold and 513 g/t silver from 398.44m
  - 2.16m at 16.49 % zinc, 0.89% copper, 0.7 g/t gold and 35 g/t silver from 405.55m.
  - 3.17m at 11.47 % zinc, 0.70% copper, 2.29 g/t gold and 79 g/t silver from 411.99 m.
- 6.15m at 3.60% zinc, 0.19% copper, 1.97 g/t gold and 78.6 g/t silver from 424.54m, including:
  - 0.88m at 1.63% zinc, 0.1% copper, 9.81 g/t gold and 312 g/t silver from 424.54m
  - 1.07m at 7.91% zinc, 0.37% copper, 2.44 g/t gold and 139 g/t silver from 425.42m

A third zone of zinc, lead, gold and silver mineralisation in the same hole from 450m, included:

- 3.53m at 4.27% zinc, 0.37 % copper, 2.4% lead, 3.76 g/t gold and 126 g/t silver from 448.9m, including:
  - 0.85m at 7.75% zinc, 0.66 % copper, 4.25 % lead, 14.55 g/t gold and 325 g/t silver from 448.9m.

The mineralisation intercepted in BMZ80 is located 50m north of Platina's BMZ79 hole and has confirmed a wide, high grade zinc, gold and silver mineralised zone in the northern edge of the main mineralised horizon. In addition, the deeper intercept from 450m represents a northern extension of the western mineralised horizon.

Hole BMZ80 follows the recent success in hole BMZ79 which intersected the highest zinc interval at the project to date, 1.71m at 51.9% zinc, 1.49% copper, 0.05% lead, 0.85 g/t gold and 31.9 g/t silver from 414.65m as well as the following intervals:

- 7.47m at 25.55% zinc, 0.87% copper, 0.68 g/t gold and 17 g/t silver from 412.81m, including:
- 3.05m at 49.60 % zinc, 1.39% copper, 0.91 g/t gold and 30 g/t silver from 414.65m.

**New frontiers**  
**New growth**



A second zone of zinc mineralisation in hole BMZ79 from 450m, included:

- 10.96m at 3.11% zinc, 0.47 % copper and 0.27% lead from 450.37m, including:
- 2.08m at 4.22% zinc from 457.16m.

Table 2 overleaf includes the main mineralised intervals intercepted by Platina's stage 1 holes BMZ79 and BMZ80.

Encouraged by the results, Platina Managing Director Corey Nolan said

"We now have greater confidence that the deposit not only contains a significant zinc resource but with intervals containing up to 14.55 g/t of gold and 513g/t of silver, the results indicate stronger potential for the production of precious metal by-products."

"Our recent drilling program has encountered the highest grades ever drilled in the deposit and thus provides scope to expand the mineral resource at higher grades."

**This announcement was authorised by Mr Corey Nolan, Managing Director of Platina Resources Limited.**

**For more information:**

Corey Nolan  
Managing Director  
Phone +61 (0)7 5580 9094  
admin@platinaresources.com.au

Gareth Quinn  
Corporate Affairs Manager  
Mobile: 0417 711 108  
gareth@republicpr.com.au



## BLUE MOON PROJECT DRILLING PROGRAM

### GEOLOGICAL DESCRIPTION

The Blue Moon deposit is a Kuroko-type, polymetallic, volcanogenic, massive sulphide (VMS) deposit. The deposit is hosted in a rhyolite strata up to 300m thick which is part of the Gopher Ridge Formation consisting of a basal sequence of basalt and andesite. The sulphide-sulphate mineralised lenses are hosted in the lower part of the felsic sequence. The felsic volcanic rocks are succeeded to the east by volcanoclastic rocks and ultimately by deep-water argillaceous, sedimentary rocks. Strata at Blue Moon strike approximately 20° west of north, dip near vertically, face to the east and are tightly folded. Lithologies observed at Blue Moon exhibit low grade metamorphism characteristics of the lower greenschist facies.

The ore minerals are pyrite, sphalerite, chalcopyrite, galena, and minor tetrahedrite and bornite. To date, four lenses of zinc/copper mineralisation have been defined within at least two, possibly three horizons. The deposit also contains gold and silver.

### DRILL TABLE

Collar locations for the first two holes are outlined in Table 1.

**Table 1 – Drill hole collar location information**

Drill Hole	East	North	RL	Azimuth	Dip	Hole Depth (m)
BMZ79	742493	416170	388	253	-58	560
BMZ80	742495	416172	388	264	-57	572

Mineralised intersections for Hole BMZ79 (as reported in Platina's ASX Release, Blue Moon drilling intersects significant zinc mineralisation, 24 January 2020) and BMZ80 are outlined in Table 2.

**Table 2 – Drill hole intercepts information (downhole Intersections in metres)**

Drill Hole	From (m)	To (m)	Thickness (m)	Zinc Grade (%Zn)	Copper Grade (%Cu)	Lead Grade (%Pb)	Gold Grade (g/t Au)	Silver Grade (g/t Ag)
BMZ79	412.81	420.28	7.47	25.55	0.87	0.02	0.68	17.39
including	414.65	417.7	3.05	49.6	1.39	0.05	0.91	30.32
BMZ79	450.37	461.33	10.96	3.11	0.47	0.27	0.16	4.49
including	457.16	459.24	2.08	4.22	0.24	0.33	0.08	3.3
BMZ80	398.44	418.02	19.58	8.41	0.49	0.22	1.65	82.75
including	398.44	399.7	1.26	4.57	0.37	1.51	6.71	513
including	405.55	407.71	2.16	16.49	0.89	0.32	0.7	35.01
including	411.99	415.16	3.17	11.47	0.7	0.01	2.29	79.02
BMZ80	424.54	430.69	6.15	3.6	0.19	0.36	1.97	78.6
including	424.54	425.42	0.88	1.63	0.09	0.75	9.81	312
including	425.42	426.49	1.07	7.91	0.37	1.21	2.44	139
BMZ80	448.89	452.42	3.53	4.27	0.37	2.41	3.76	125.68
including	448.89	450.43	1.54	7.92	0.76	4.53	6.66	210.97
including	448.89	449.74	0.85	7.75	0.66	4.25	14.55	325.0.0
including	449.74	450.43	0.69	8.12	0.88	4.87	2.43	70.5
BMZ80	463.74	464.52	0.78	7.34	0.37	1.26	0.02	138

Note: Thicknesses are not true width. True width is approximately 55% of thickness



## DRILL HOLE LOCATION MAP

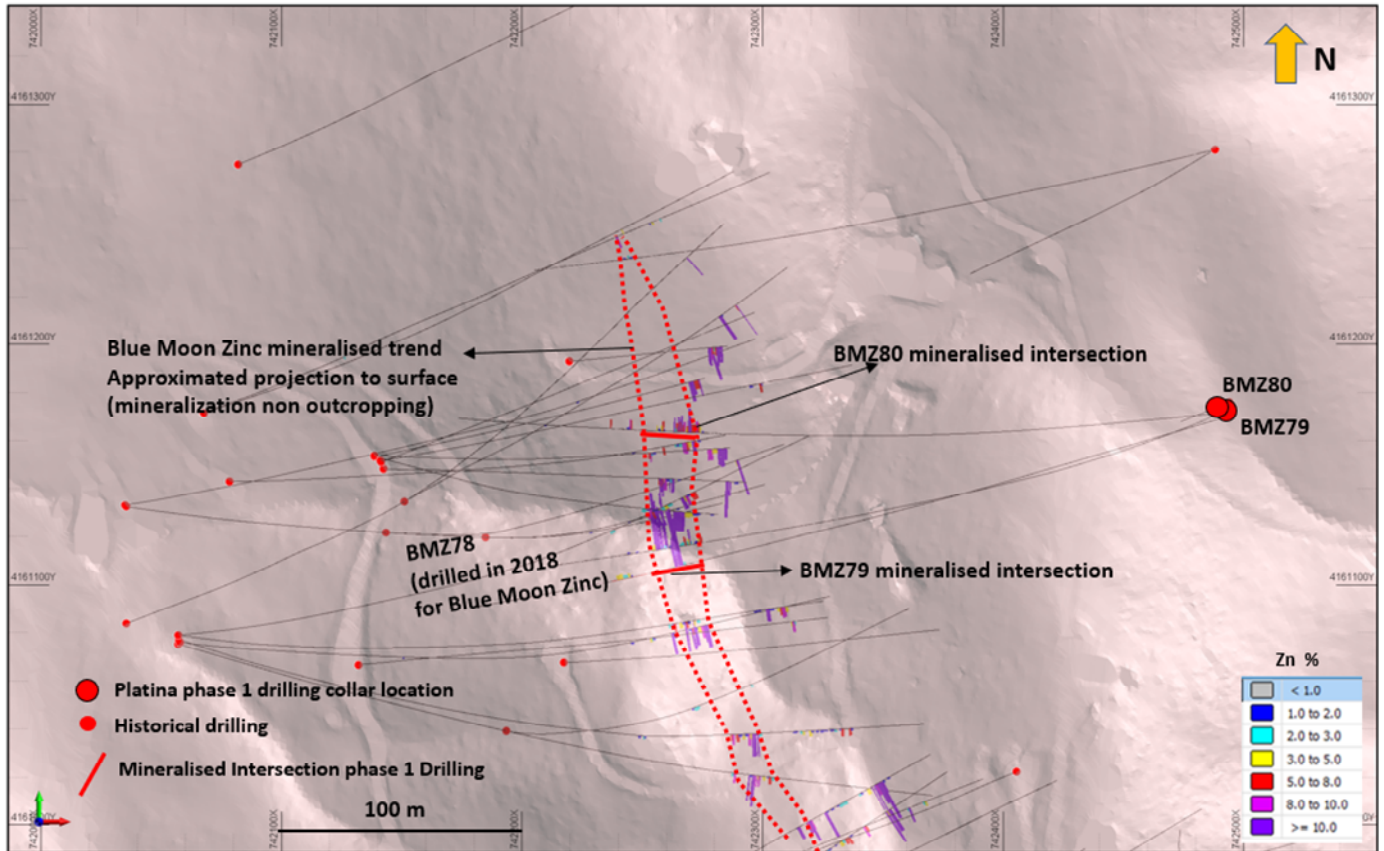


Figure 1: Plan view showing Platina's phase 1 drill hole collar location (BMZ79 and BMZ80) both placed in the same pad as BMZ78, drilled by Blue Moon Zinc in 2018. The figure includes surface projection of the mineralised interval intercepted by BMZ79 (reported in Platina's ASX release 200124) and BMZ80 (reported in this release) as well as an approximate surface projection of the main VMS mineralised zone.

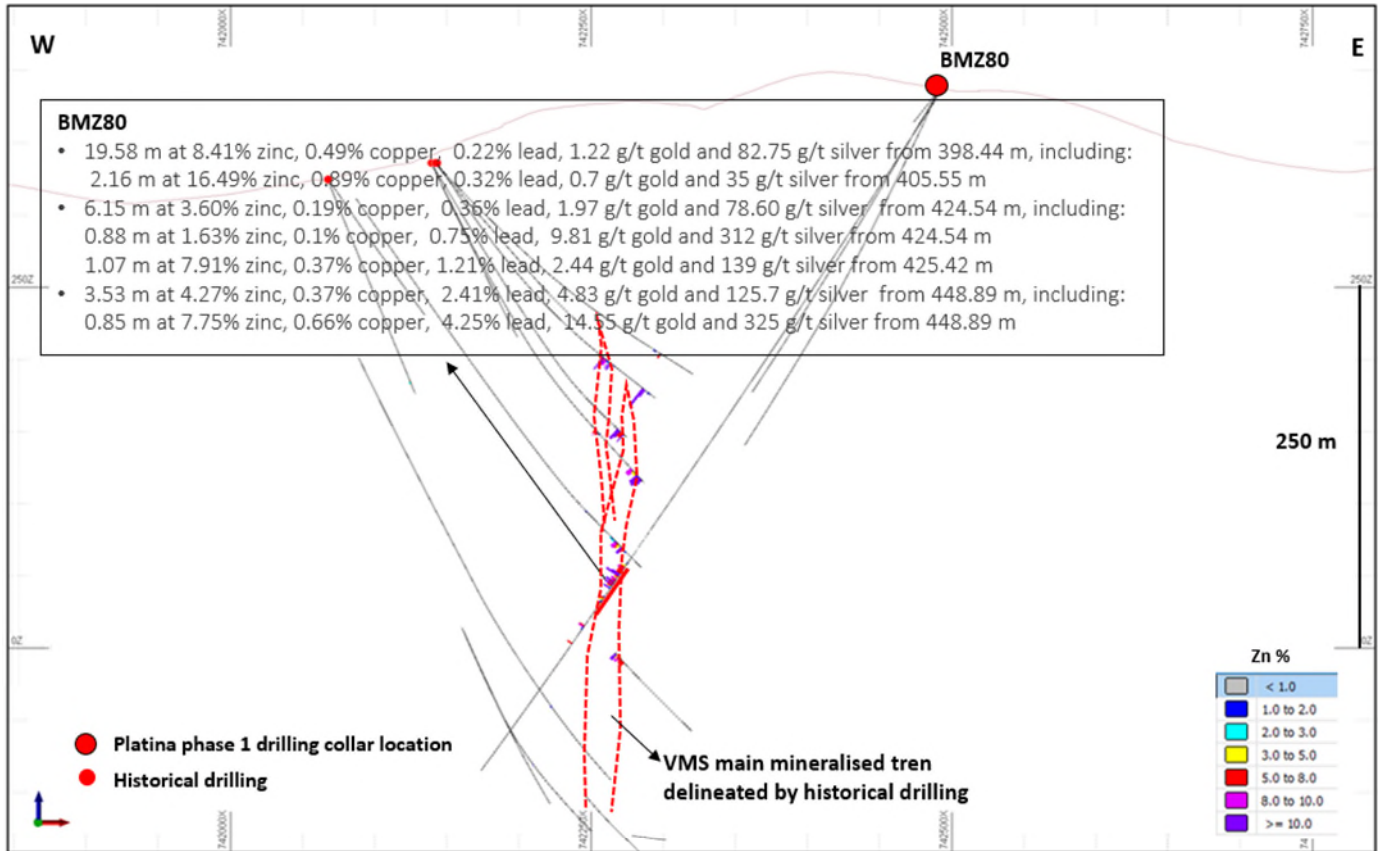


Figure 2: Cross section looking north (50m envelope) showing collar location, path and mineralised intervals intercepted by BMZ80 drilled at the same pad than Platina's BMZ79 and Blue Moon Zinc BMZ78 (drilled in 2018) and historical drill holes with zinc% mineralised zones.

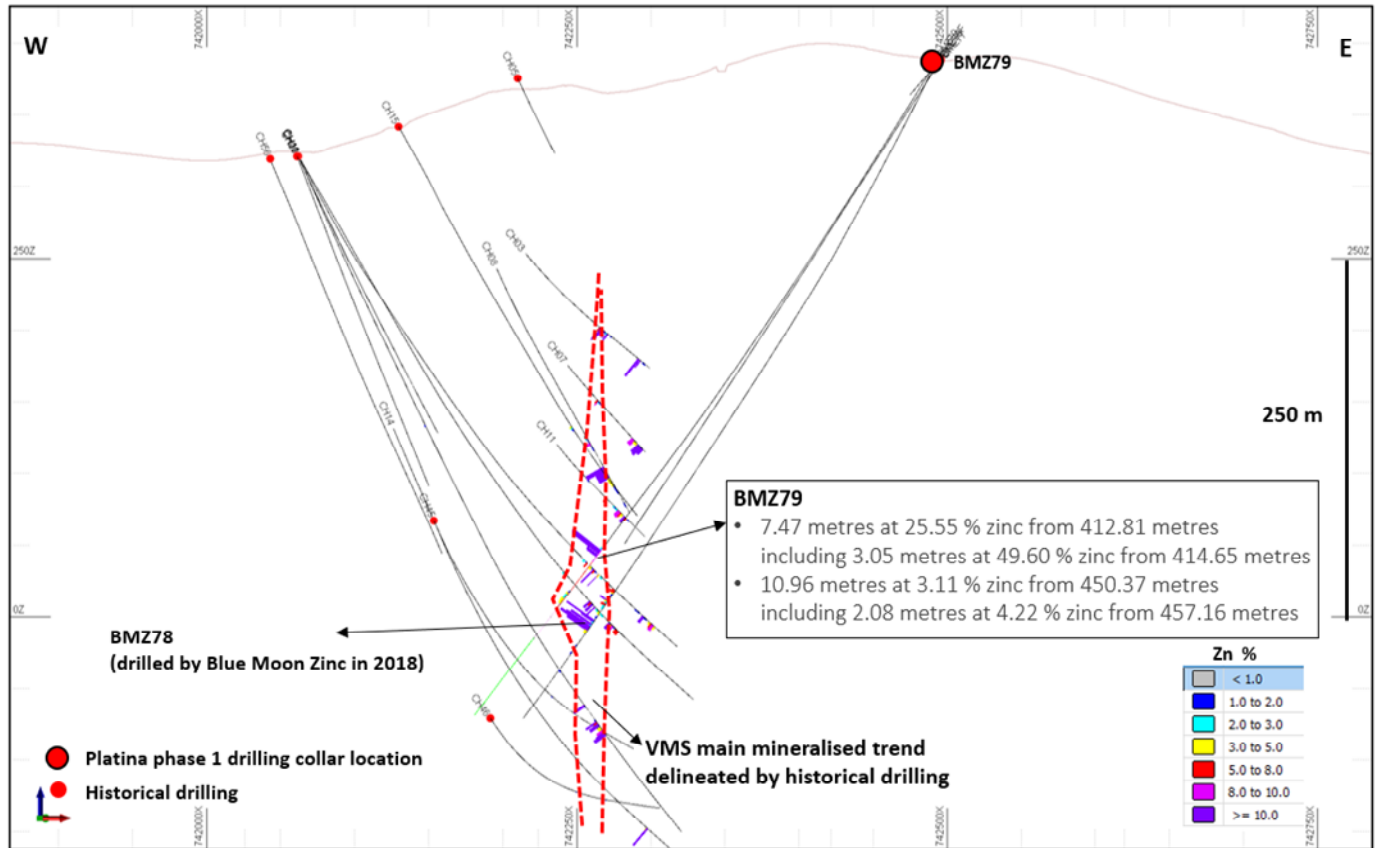


Figure 3: Cross section looking north (70m envelope) showing collar location, path and mineralised intervals intercepted by BMZ79 with respect to previous hole BMZ78 (drilled in same pad by Blue Moon Zinc in 2018) and historical drill holes with zinc% mineralised zones.

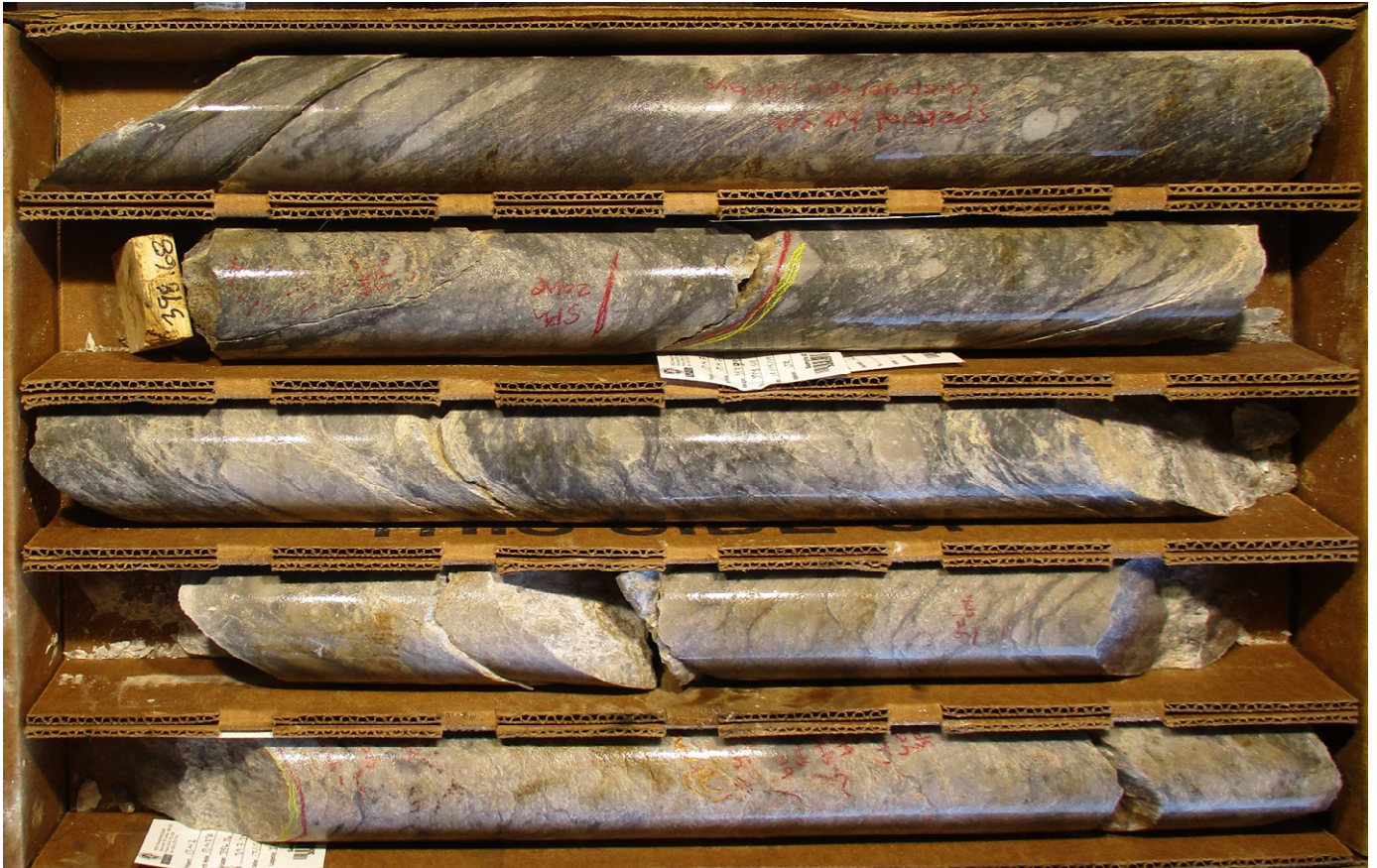


Figure 4: Massive sulphide mineralised interception at hole BMZ80 from 396.78 m to 399.21 m downhole depth which includes the highest silver grade interval returned by this hole, 1.26 m at 4.57% zinc, 0.37% copper, 1.51% lead, 6.71 g/t gold and 513 g/t silver from 398.44m. Sulphide mineralisation mostly follows primary foliation in the hosting rhyolite rock. Sphalerite is pale brown; chalcopyrite bright yellow. High silver and gold are well correlated with antimony and barite. Pyrite completes the visible sulphide assemblage.



Figure 5: Massive sulphide mineralised interception at hole BMZ80 from 404.52 m to 407.19 m downhole depth which includes the highest zinc grade interval returned by this hole, 2.16 m at 16.49% zinc, 0.89% copper, 0.32% lead, 0.7 g/t gold and 35 g/t silver from 405.55m. Sulphide mineralisation mostly follows primary foliation in the hosting rhyolite rock. Sphalerite is pale brown.

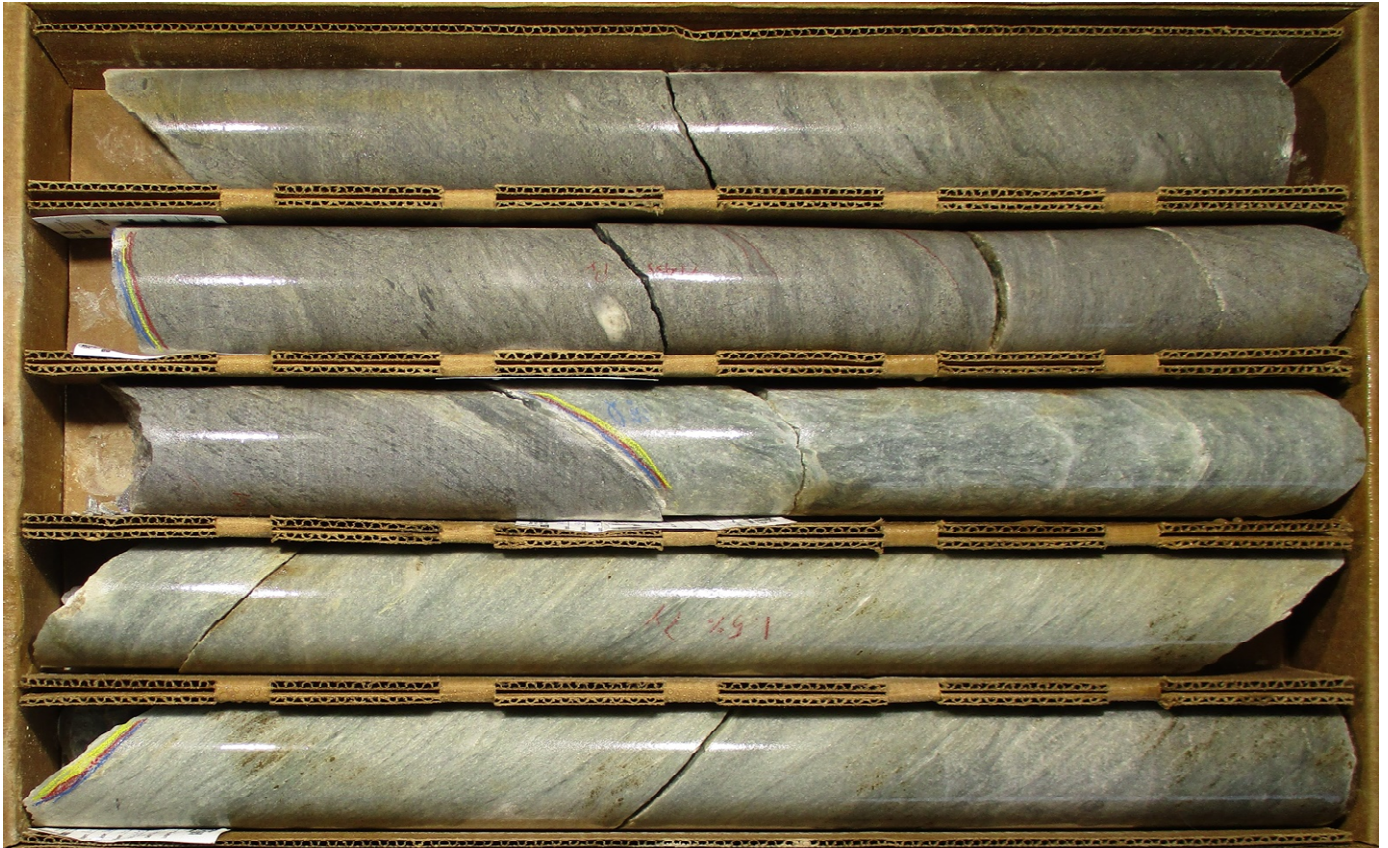


Figure 6: Massive sulphide mineralised interception at hole BMZ80 from 447.54 m to 450.27 m downhole depth which includes the highest gold grade interval returned by this hole, 0.85 m at 7.75% zinc, 0.66% copper, 4.25% lead, 14.55 g/t gold and 325 g/t silver from 448.89m. Sulphide mineralisation mostly follows primary foliation in the hosting rhyolite rock. Sphalerite is pale brown; chalcopyrite bright yellow. High silver and gold are well correlated with antimony and barite. Pyrite completes the visible sulphide assemblage.



## ABOUT PLATINA RESOURCES

Platina is an Australian-based company focused on returning shareholder value by advancing early-stage metals projects through exploration, feasibility, permitting and into development.

The company has interests in the following projects:

- Blue Moon (to earn 70% interest) – Located in California, USA. The project has a NI43-101 resource which is open at depth and along strike and has favorable metallurgy;
- Platina Scandium Project - located in central New South Wales, the project is one of the largest and highest-grade scandium deposits in the world, which has the potential to become Australia's first scandium producer with cobalt, platinum and nickel credits;
- Skaergaard (100% interest) - One of the world's largest undeveloped gold deposits and one of the largest palladium resources outside of South Africa and Russia, located in Greenland; and
- Munni Munni (30% interest) - Situated in the Pilbara region of Western Australia, the project is one of Australia's most significant Platinum Group Metal occurrences. Munni Munni also has potential for conglomerate hosted gold and is a joint venture with Artemis Resources Limited.

## REPORTING OF EXPLORATION RESULTS

The information in this ASX release that relates to Mineral Resources was last reported by the company in compliance with the 2012 Edition of the JORC Australasian Code for Reporting of Exploration Results, Mineral Resources and Ore Reserves. Previous Exploration Results and Mineral Resource Estimates have been reported in the following ASX release:

- *Transformational Transaction – Joint Venture on a high-grade Zinc-Copper-Gold project, 29 August 2019.*
- *Blue Moon drilling intersects significant zinc mineralisation, 24 January 2020*

The company confirms that it is not aware of any new information or data that materially affects the information included in the market announcements referred above and further confirms that all material assumptions underpinning the production targets and all material assumptions and technical parameters underpinning the Mineral Resource statements contained in those market releases continue to apply and have not materially changed.

## COMPETENT PERSON STATEMENT

The information in this report that relates to Exploration Results is based on information compiled by Dr Gustavo Delendatti, a member of the Australian Institute of Geoscientists. Dr Delendatti is an independent consultant, and has sufficient experience which is relevant to the style of mineralisation and type of deposit under consideration and to the activity which it is undertaking to qualify as a Competent Person as defined in the JORC Code (2012 Edition) of the "Australasian Code for Reporting of Exploration Results, Mineral Resources and Ore Reserves." Dr Delendatti was responsible for the review of the exploration and drilling information, supervised the preparation of the technical information in this release and has relevant experience and competence of the subject matter. Dr Delendatti, as competent person for this announcement, has consented to the inclusion of the information in the form and context in which it appears herein. Dr Delendatti visited the project site in June 2019 and inspected the core library including mineralised intercepts from diamond drill holes completed by Blue Moon Zinc in 2018 as well as historical diamond drill holes from previous explorers that are stored in a site facility. Additionally, Dr Delendatti completed a review of the digital drill hole and resource database used in the NI43-101 report prepared by G.H. Giroux, effective date 5 October 2017 and amended on 14 November 2018. Dr Delendatti is managing the drilling and exploration programs at Blue Moon.



## JORC CODE, 2012 EDITION – TABLE 1 - SECTION 1 SAMPLING TECHNIQUES AND DATA

(Criteria in this section apply to all succeeding sections.)

Criteria	JORC Code explanation	Commentary
Sampling techniques	<ul style="list-style-type: none"> <li>Nature and quality of sampling (eg cut channels, random chips, or specific specialised industry standard measurement tools appropriate to the minerals under investigation, such as down hole gamma sondes, or handheld XRF instruments, etc). These examples should not be taken as limiting the broad meaning of sampling.</li> <li>Include reference to measures taken to ensure sample representivity and the appropriate calibration of any measurement tools or systems used.</li> <li>Aspects of the determination of mineralisation that are Material to the Public Report.</li> <li>In cases where 'industry standard' work has been done this would be relatively simple (eg 'reverse circulation drilling was used to obtain 1 m samples from which 3 kg was pulverised to produce a 30 g charge for fire assay'). In other cases, more explanation may be required, such as where there is coarse gold that has inherent sampling problems. Unusual commodities or mineralisation types (eg submarine nodules) may warrant disclosure of detailed information.</li> </ul>	<ul style="list-style-type: none"> <li>All holes reported in this program are Diamond Core Drill holes (DDH) HQ diameter.</li> <li>Diamond core typical sample length are predominantly 1.0 metre starting 2 to 3 metres above and below the contact of the mineralised structure with the un mineralised host rock. Zones within the mineralised structure containing either higher concentrations of massive sulphides were selectively sampled into a minimum length of 0.5 metres in order to better understand sulphides grade distribution in different lenses.</li> <li>Massive sulphide mineralisation concentration could be differentiated during geological logging and sampling.</li> <li>The core selected for sampling has been split in samples of half core at ALS laboratory in Reno. Sampling was conducted by a Platina geologist at ALS Reno. Samples have been dispatched to ALS laboratory in Reno for preparation and multi-element analysis including base metals and precious metals following best industry standard practices. Sample preparation and assaying techniques are within industry standard and appropriate for this type of mineralisation.</li> </ul>
Drilling techniques	<ul style="list-style-type: none"> <li>Drill type (eg core, reverse circulation, open-hole hammer, rotary air blast, auger, Bangka, sonic, etc) and details (eg core diameter, triple or standard tube, depth of diamond tails, face-sampling bit or other type, whether core is oriented and if so, by what method, etc).</li> </ul>	<ul style="list-style-type: none"> <li>Core drilling, core diameter size HQ (63.5 mm). Standard tube and bit.</li> <li>Core was not oriented.</li> </ul>
Drill sample recovery	<ul style="list-style-type: none"> <li>Method of recording and assessing core and chip sample recoveries and results assessed.</li> <li>Measures taken to maximise sample recovery and ensure representative nature of the samples.</li> <li>Whether a relationship exists between sample recovery and grade and whether sample bias may have occurred due to preferential loss/gain of fine/coarse material.</li> </ul>	<ul style="list-style-type: none"> <li>Diamond drill hole core recoveries and RQD are logged. Measurements are taken systematically down hole between core blocks i.e. ~3 metre increments.</li> <li>Core recovery has been &gt; 99%.</li> <li>Based on drilling method being diamond core and the near 100% core recovery, the sampling is considered representative.</li> <li>High competence of the core tends to preclude any potential issue of sampling bias.</li> </ul>
Logging	<ul style="list-style-type: none"> <li>Whether core and chip samples have been geologically and geotechnically logged to a level of detail to support appropriate Mineral Resource</li> </ul>	<ul style="list-style-type: none"> <li>Geological logging, core recovery and RQD measurements were completed for the 2019 drilling at Blue Moon project.</li> </ul>



	<p>estimation, mining studies and metallurgical studies.</p> <ul style="list-style-type: none"> <li>• Whether logging is qualitative or quantitative in nature. Core (or costean, channel, etc) photography.</li> <li>• The total length and percentage of the relevant intersections logged.</li> </ul>	<ul style="list-style-type: none"> <li>• Geological logging of main characteristics such as rock type, alteration and mineralisation etc has occurred in summary and detail at the massive sulphides structure and surrounding host rock.</li> <li>• For this campaign RQD and core recovery data was systematically performed both, in mineralisation and host rock.</li> <li>• The geological and geotechnical logging is at an appropriate level for the stage of development drilling being undertaken.</li> <li>• The logging of the geological features was predominately qualitative. Parameters such as sulphides and sulphate abundance are visual estimates by the logging geologist.</li> <li>• Core is photographed after metre marks and sample intervals have been clearly marked on the core. The core was photographed dry and wet. The core boxes were identified with Box Number, Hole ID, From and To using aluminium tags.</li> <li>• The entire target mineralisation type core (massive sulphide mineralisation) and surrounding un mineralised host rock has been logged, sampled and assayed. The footwall and hanging wall barren host rock has been detailed logged.</li> </ul>
Sub-sampling techniques and sample preparation	<ul style="list-style-type: none"> <li>• If core, whether cut or sawn and whether quarter, half or all core taken.</li> <li>• If non-core, whether riffled, tube sampled, rotary split, etc and whether sampled wet or dry.</li> <li>• For all sample types, the nature, quality and appropriateness of the sample preparation technique.</li> <li>• Quality control procedures adopted for all sub-sampling stages to maximise representivity of samples.</li> <li>• Measures taken to ensure that the sampling is representative of the in situ material collected, including for instance results for field duplicate/second-half sampling.</li> <li>• Whether sample sizes are appropriate to the grain size of the material being sampled.</li> </ul>	<ul style="list-style-type: none"> <li>• Drill core HQ diameter samples were cut into two halves with one half placed in a new plastic bag along with the sample tag sent for analysis; the other half was replaced in the core box with the second sample tagged for reference.</li> <li>• Sampling boundaries are based in geological contacts of massive sulphide mineralisation with host rock as well as sulfide concentration within the main mineralised structure.</li> <li>• In general, at least two host rock sample were collected each side from the contacts with the massive sulphide mineralised structure</li> <li>• Sample preparation of drill core samples collected during the 2019 drilling program has been conducted at ALS Reno, an international accredited laboratory for specific tests listed in their Scopes of Accreditation to ISO/IEC 17025:2005 – General Requirements for the Competence of Testing and Calibration Laboratories ISO/IEC 17025 standards following industry best practice, involving oven drying, crushing and pulverizing there to respect the specifications of the analytical</li> </ul>



		<p>protocol and then shipped to ALS Vancouver lab facilities to complete the requested assaying pack.</p> <ul style="list-style-type: none"> <li>• Sample sizes are considered appropriate with regards to the concentration of the sampled material.</li> </ul>
Quality of assay data and laboratory tests	<ul style="list-style-type: none"> <li>• The nature, quality and appropriateness of the assaying and laboratory procedures used and whether the technique is considered partial or total.</li> <li>• For geophysical tools, spectrometers, handheld XRF instruments, etc, the parameters used in determining the analysis including instrument make and model, reading times, calibrations factors applied and their derivation, etc.</li> <li>• Nature of quality control procedures adopted (e.g. standards, blanks, duplicates, external laboratory checks) and whether acceptable levels of accuracy (i.e. lack of bias) and precision have been established.</li> </ul>	<ul style="list-style-type: none"> <li>• Sample preparation and Au Fire Assay have been conducted at ALS Reno and the Four Acid ICP-AES multi-element package (33 elements) for zinc, copper, lead and silver ICP has been conducted at ALS Vancouver, both international accredited laboratory under ISO/IEC 17025 standards.</li> <li>• The analytical protocol requested is the Four Acid ICP-AES multi-element package (33 elements) for zinc, copper, lead and silver as well as Au Fire Assay and AAS. Base metals over limits have been finalized with Assay Grade Four Acid ICP and titration whereas precious metals over limits have been finalized with gravimetric finishing.</li> <li>• No geophysical or handheld tools were used.</li> <li>• Quality control protocol ("QA/QC") involved a review of laboratory supplied internal QA/QC and in-house controls consisting in the insertion of reference standards and samples of "barren" material (blanks), on a systematic basis in the proportion of one of each every 20 – 30 samples.</li> </ul>
Verification of sampling and assaying	<ul style="list-style-type: none"> <li>• The verification of significant intersections by either independent or alternative company personnel.</li> <li>• The use of twinned holes.</li> <li>• Documentation of primary data, data entry procedures, data verification, data storage (physical and electronic) protocols.</li> <li>• Discuss any adjustment to assay data.</li> </ul>	<ul style="list-style-type: none"> <li>• All the mineralisation intersections and assay results were reviewed by Platina's Competent Person.</li> <li>• The Stage 1 drilling program conducted by Platina in 2019 is logged by at least 1 contracted geologist controlled by Platina's Competent Person.</li> <li>• The core boxes were photographed and are available for verification at Blue Moon Zinc project facilities at Hornitos, California.</li> <li>• No twinned holes were drilled during this 2019 drilling campaign by Platina.</li> <li>• Primary data was recorded on laptop computers directly into standardized Excel logging templates with built in look-up codes. This information will be merged with the assay certificate data into Platina's in-house database</li> </ul>



		<ul style="list-style-type: none"> <li>No adjustments to assay data have been conducted</li> </ul>
Location of data points	<ul style="list-style-type: none"> <li>Accuracy and quality of surveys used to locate drill holes (collar and down-hole surveys), trenches, mine workings and other locations used in Mineral Resource estimation.</li> <li>Specification of the grid system used.</li> <li>Quality and adequacy of topographic control.</li> </ul>	<ul style="list-style-type: none"> <li>Drill collar locations have been surveyed using a hand held GPS.</li> <li>Downhole surveys (dip and azimuth) for 2019 drilling were collected as single shot readings using a Reflex tool. Measurements are made at the beginning (10 m below surface) and every 30 metres up to the end of the hole length.</li> <li>The grid system used is 1983 North American Datum (NAD83)</li> <li>The level of topographic control offered by the collar survey is considered sufficient for the work undertaken at its current stage.</li> </ul>
Data spacing and distribution	<ul style="list-style-type: none"> <li>Data spacing for reporting of Exploration Results.</li> <li>Whether the data spacing and distribution is sufficient to establish the degree of geological and grade continuity appropriate for the Mineral Resource and Ore Reserve estimation procedure(s) and classifications applied.</li> <li>Whether sample compositing has been applied.</li> </ul>	<ul style="list-style-type: none"> <li>Drill holes were drilled approximately perpendicular to the main massive sulphide mineralisation trend as shown on the attached plan.</li> <li>Drill collars were sited to provide the best geological information possible to test the grade, strike and vertical extensions of mineralisation.</li> <li>The data spacing is sufficient to estimate geological and grade continuity of observed mineralisation.</li> <li>Sample compositing has not been applied.</li> </ul>
Orientation of data in relation to geological structure	<ul style="list-style-type: none"> <li>Whether the orientation of sampling achieves unbiased sampling of possible structures and the extent to which this is known, considering the deposit type.</li> <li>If the relationship between the drilling orientation and the orientation of key mineralised structures is considered to have introduced a sampling bias, this should be assessed and reported if material.</li> </ul>	<ul style="list-style-type: none"> <li>Drilling grid orientation is approximately perpendicular to the strike of the mineralisation determined by previous mapping and historical drilling.</li> <li>No bias attributable to orientation of sampling upgrading of results has been identified.</li> </ul>
Sample security	<ul style="list-style-type: none"> <li>The measures taken to ensure sample security.</li> </ul>	<ul style="list-style-type: none"> <li>All reasonable measures have been and will be taken to ensure sample security along the value chain. These measures include the sample collection by company's field personnel, recording of sample dispatch and receipt reports, secure delivering of samples to international laboratory facilities.</li> </ul>



Audits or reviews	<ul style="list-style-type: none"><li>• The results of any audits or reviews of sampling techniques and data.</li></ul>	<ul style="list-style-type: none"><li>• No audit or review of the sampling techniques and data for this release has been carried out.</li><li>• The quality control protocols implemented at Blue Moon Zinc project are considered to represent good industry practice and allow some assessment of analytical precision and accuracy.</li></ul>
-------------------	---	--



## SECTION 2 - REPORTING OF EXPLORATION RESULTS

(Criteria listed in the preceding section also apply to this section).

Criteria	JORC Code explanation	Commentary
Mineral tenement and land tenure status	<ul style="list-style-type: none"> <li>Type, reference name/number, location and ownership including agreements or material issues with third parties such as joint ventures, partnerships, overriding royalties, native title interests, historical sites, wilderness or national park and environmental settings.</li> <li>The security of the tenure held at the time of reporting along with any known impediments to obtaining a license to operate in the area.</li> </ul>	<ul style="list-style-type: none"> <li>The Blue Moon Zinc project is 100% owned by TSX-V listed company, Blue Moon Zinc Corporation.</li> <li>The Blue Moon Zinc Project consists of three distinct land tenure components that cover 445 acres, including: <ul style="list-style-type: none"> <li>Two deeded, patented mineral claims (American Eagle and Blue Bell/Bonanza) owned 100% by Keystone Mines Inc (KMI), BMZ's wholly owned U.S. subsidiary;</li> <li>Eight Federal Lode claims (Red Cloud 1-8) held 100% by KMI and subject to two 1% NSR agreements with private individuals, both capped at US\$700,000 and one 0.5% Net Smelter Return (NSR) agreement with Boliden capped at US \$500,000; and</li> <li>100% interest in the mineral rights from two Spanish Land Grants of the James Gann Jr. Trust of 1991 subject to a 3% NSR capped at US \$200,000.</li> </ul> </li> <li>On August 29, 2019, Platina entered into a JV agreement to earn up to a 70% interest in the Blue Moon Zinc Project by spending CAD\$ 3.25 million over 18 months to earn 50% and CAD\$ 3.75 million over another 18 months to earn an additional 20%. Once the Company has earned a 70% interest, expenditure is based on a contribute/dilute basis subject to Platina funding the first CAD\$ 5 million for both parties as a fully refundable financing loan (see Platina ASX Release, August 29, 2019).</li> <li>Platina will be the operator of the Joint Venture Agreement.</li> <li>There are no national parks over the license area. No First Nation sites or places have been declared or recorded in the JV area.</li> <li>The mining property is in good standing with no known impediments.</li> </ul>
Exploration done by other parties	<ul style="list-style-type: none"> <li>Acknowledgment and appraisal of exploration by other parties.</li> </ul>	<ul style="list-style-type: none"> <li>A mine was operated in the Project area by Hecla Mining Company between 1943 and 1945. The property was actively explored and advanced by Imperial Metals, Boliden and Lac Minerals (now Barrick) in the 1980s and 1990s but was never developed due to the low zinc prices.</li> </ul>



		<ul style="list-style-type: none"> <li>• Drilling has occurred on the Blue Moon property since 1942 with a total of 37,408 metres (122,730 feet) of drilling in 113 drill holes.</li> <li>• BMZ drilled four holes in 2018 which included drill hole BMZ78 which previously produced the highest-grade intersection ever reported in the deposit.</li> </ul>
Geology	<ul style="list-style-type: none"> <li>• Deposit type, geological setting and style of mineralisation.</li> </ul>	<ul style="list-style-type: none"> <li>• The Blue Moon deposit is a Kuroko-type, polymetallic, volcanogenic, massive sulphide deposit (VMS) deposit. The deposit is hosted in a rhyolite strata up to 300 metres thick which is part of the Gopher Ridge Formation consisting of a basal sequence of basalt and andesite overlain by a rhyolite strata.</li> <li>• The sulphide-sulphate mineralized lenses are hosted in the lower part of the felsic sequence. The felsic volcanic rocks are succeeded to the east by volcanoclastic rocks and ultimately by deep-water argillaceous, sedimentary rocks (Meade, 1996).</li> <li>• Strata at Blue Moon strike approximately 20° west of north, dip near vertically, face to the east and are tightly folded.</li> <li>• Lithologies observed at Blue Moon exhibit low grade metamorphism characteristics of the lower greenschist facies</li> <li>• The ore minerals are pyrite, sphalerite, chalcopyrite, galena, and minor tetrahedrite and bornite. To date, four lenses of Zn/Cu mineralisation have been defined within at least two, possibly three horizons. The deposit also contains gold and silver.</li> </ul>
Drill hole Information	<ul style="list-style-type: none"> <li>• A summary of all information material to the understanding of the exploration results including a tabulation of the following information for all Material drill holes:</li> <li>• easting and northing of the drill hole collar</li> <li>• elevation or RL (Reduced Level – elevation above sea level in metres) of the drill hole collar</li> <li>• dip and azimuth of the hole</li> <li>• down hole length and interception depth</li> <li>• hole length.</li> <li>• If the exclusion of this information is justified on the basis that the information is not Material and this exclusion does not detract from the understanding of the report, the Competent</li> </ul>	<ul style="list-style-type: none"> <li>• In late December 2019, Platina completed the Stage 1 drilling program consisting of 1,132 metres of diamond core drilling HQ diameter.</li> <li>• Drill hole collar details are reported in the body of this announcement as Table 1 and assay results in Table 2.</li> <li>• All historical exploration data has been compiled by Blue Moon Zinc Corp.</li> </ul>



	Person should clearly explain why this is the case.	
Data aggregation methods	<ul style="list-style-type: none"> <li>• In reporting Exploration Results, weighting averaging techniques, maximum and/or minimum grade truncations (eg cutting of high grades) and cut-off grades are usually Material and should be stated.</li> <li>• Where aggregate intercepts incorporate short lengths of high-grade results and longer lengths of low grade results, the procedure used for such aggregation should be stated and some typical examples of such aggregations should be shown in detail.</li> <li>• The assumptions used for any reporting of metal equivalent values should be clearly stated.</li> </ul>	<ul style="list-style-type: none"> <li>• The results are weighted averages by sample length. No high grade cuts have been applied. Results are reported for all intersections of zinc greater than 2% zinc. The mineralised intervals are listed in Table 2 in the body of the announcement</li> <li>• Lengths of low grade zinc results have been included where the adjacent higher grade results are of sufficient tenor such that the weighted average remains close to or above the lower cut-off zinc grades.</li> <li>• No metal equivalents are reported.</li> </ul>
Relationship between mineralisation widths and intercept lengths	<ul style="list-style-type: none"> <li>• These relationships are particularly important in the reporting of Exploration Results.</li> <li>• If the geometry of the mineralisation with respect to the drill hole angle is known, its nature should be reported.</li> <li>• If it is not known and only the down hole lengths are reported, there should be a clear statement to this effect (eg 'down hole length, true width not known').</li> </ul>	<ul style="list-style-type: none"> <li>• Drilling has been sited to intersect the massive sulphide mineralisation orthogonally.</li> <li>• Drilling widths reported are downhole intercept widths and true width is approximately 55% of drilling width.</li> <li>• The general orientation and geometry mineralised bodies are described in the body of this announcement.</li> </ul>
Diagrams	<ul style="list-style-type: none"> <li>• Appropriate maps and sections (with scales) and tabulations of intercepts should be included for any significant discovery being reported These should include, but not be limited to a plan view of drill hole collar locations and appropriate sectional views.</li> </ul>	<ul style="list-style-type: none"> <li>• A collar plan and typical cross-sections are presented in the body of this report.</li> </ul>
Balanced reporting	<ul style="list-style-type: none"> <li>• Where comprehensive reporting of all Exploration Results is not practicable, representative reporting of both low and high grades and/or widths should be practiced to avoid misleading reporting of Exploration Results.</li> </ul>	<ul style="list-style-type: none"> <li>• The reporting is considered to be balanced.</li> </ul>
Other substantive exploration data	<ul style="list-style-type: none"> <li>• Other exploration data, if meaningful and material, should be reported including (but not limited to): geological observations; geophysical survey results; geochemical survey results; bulk samples – size and method of treatment; metallurgical test results; bulk density, groundwater, geotechnical and rock characteristics; potential deleterious or contaminating substances.</li> </ul>	<ul style="list-style-type: none"> <li>• The Platina 2019 phase 1 diamond drilling was planned with the objective of testing: <ul style="list-style-type: none"> <li>• The potential southern plunge of the main mineralised zones which contains the majority of the existing resource. This includes the down dip extension of Hole BMZ78 and other high-grade historical holes nearby where the Company aims to build a higher-grade core to the deposit; and</li> <li>• The upper extension of the main and east mineralised lenses in areas where drilling</li> </ul> </li> </ul>



		<p>density is lower. The east mineralised lens is typically higher-grade in gold and silver.</p> <ul style="list-style-type: none"> <li>• All the available historical data pertaining to the project area has been compiled by Blue Moon Zinc Corporation and used for all Platina's announcements to date.</li> </ul>
Further work	<ul style="list-style-type: none"> <li>• The nature and scale of planned further work (eg tests for lateral extensions or depth extensions or large-scale step-out drilling).</li> <li>• Diagrams clearly highlighting the areas of possible extensions, including the main geological interpretations and future drilling areas, provided this information is not commercially sensitive.</li> </ul>	<ul style="list-style-type: none"> <li>• Platina intends drilling the project in a number of phases with the following objectives: <ul style="list-style-type: none"> <li>• Expanding the size of the existing mineral resource which is open at depth and along strike;</li> <li>• Converting the inferred mineral resources to measured and indicated through infill drilling;</li> <li>• Targeting other potential mineralisation within the tenement package;</li> <li>• Collecting geotechnical and hydrological data for incorporation into feasibility studies; and</li> <li>• Collecting drill core for metallurgical test work.</li> </ul> </li> </ul>