



**AGM 2018**

**Overview on CAR Prospect**

**Dr Kevin Wills**

**ASX: MEU**



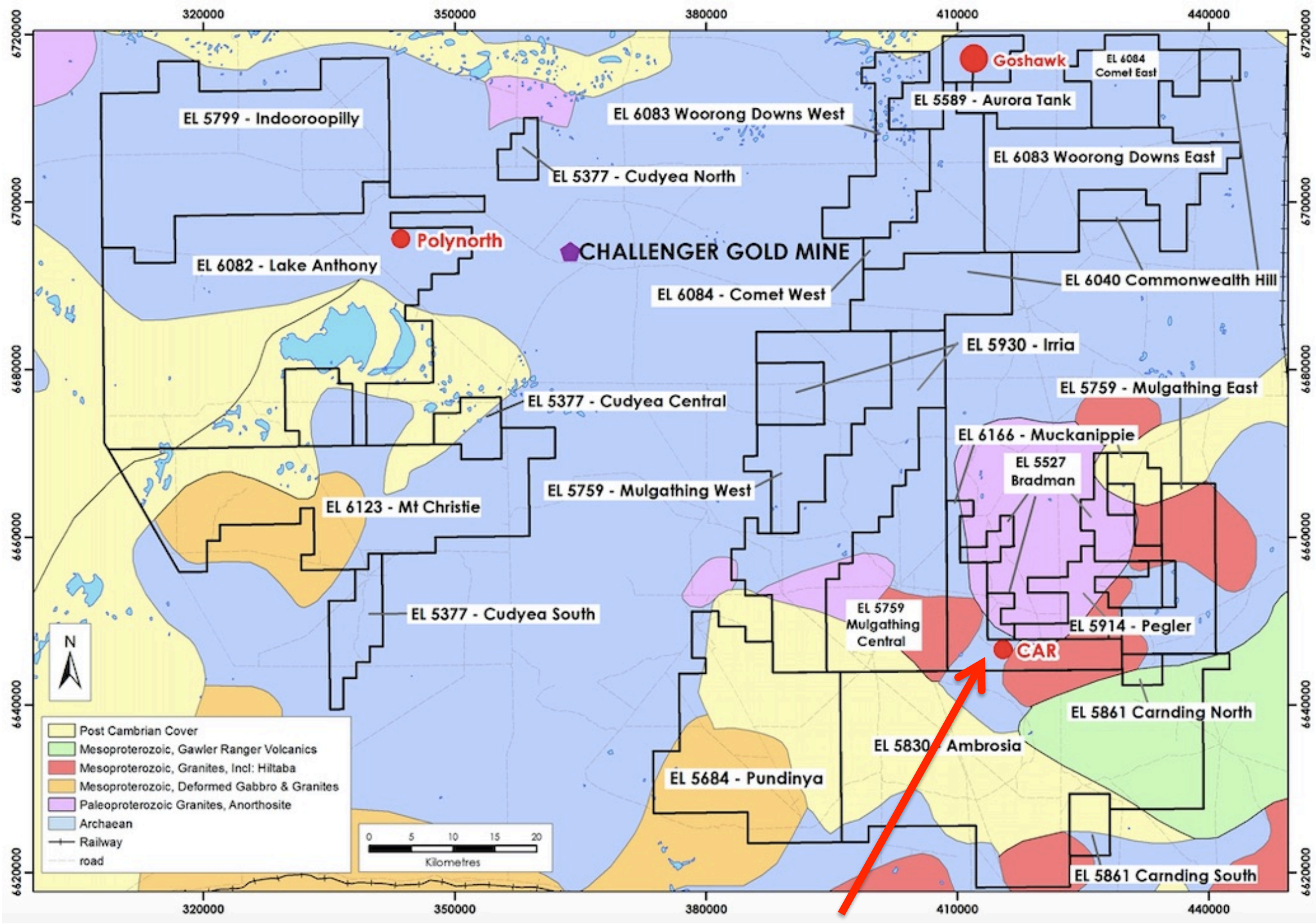
MARMOTA



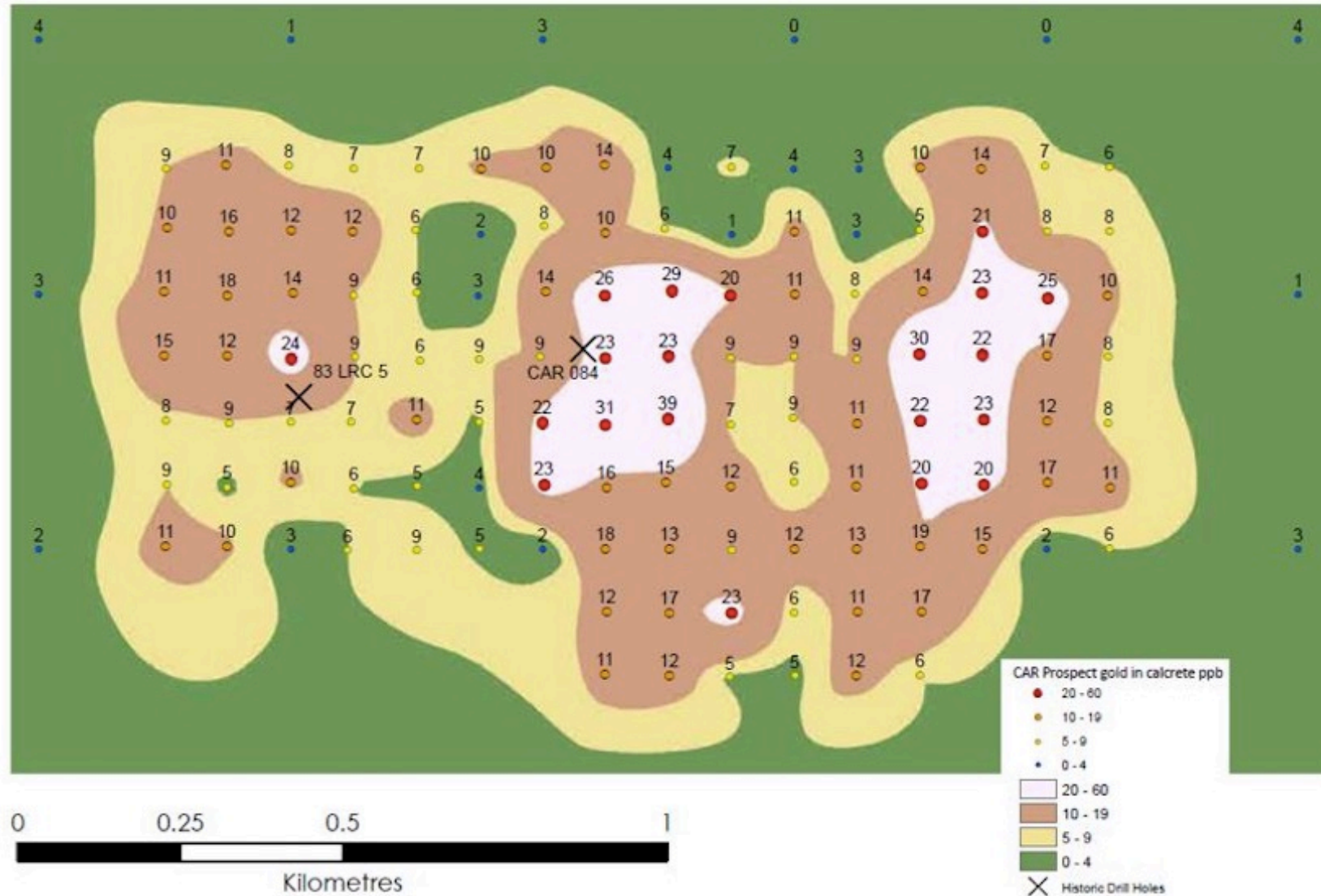
# Gawler Craton CAR Prospect

*AGM UPDATE*

Location of  
CAR  
Prospect



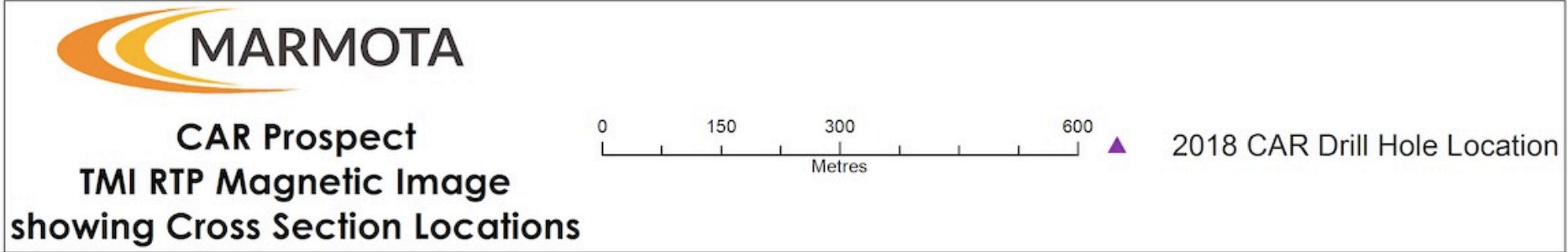
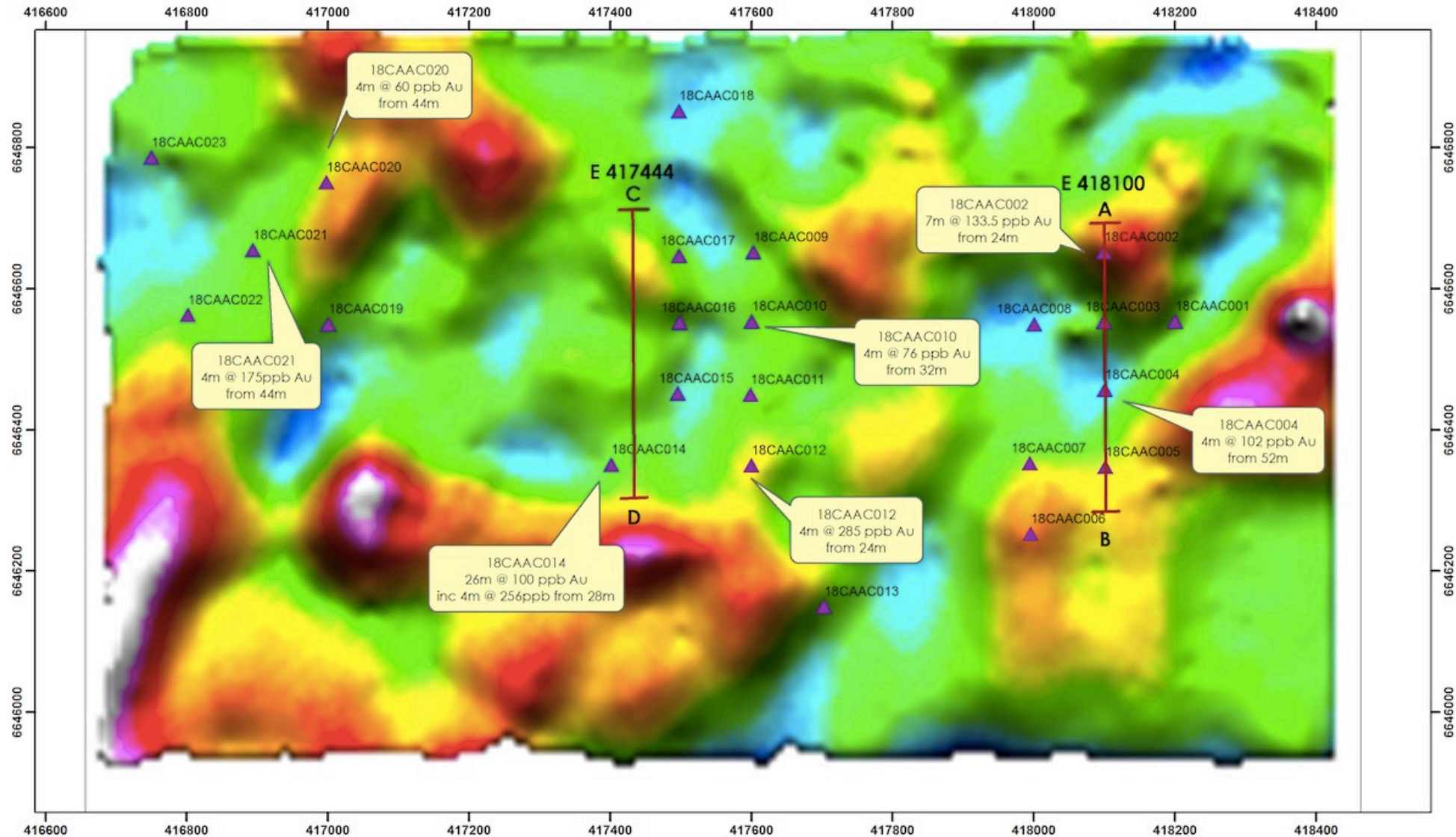
- One of Marmota's most interesting prospects is the CAR Prospect.
- Located by infill calcrete sampling around a gold-anomalous hole (CAR 84) drilled in 1991 in the TTBDP.
- The prospect is located near the contact of Gawler Range Volcanics, Hiltaba Granites and Archaean Gneiss with anomalous copper, lead and zinc in nearby holes.
- Hydrothermal alteration during the Gawler Range Volcanics – Hiltaba Granite event at around 1590 Ma is associated with orebodies such as Olympic Dam, Prominent Hill and Carrapateena.



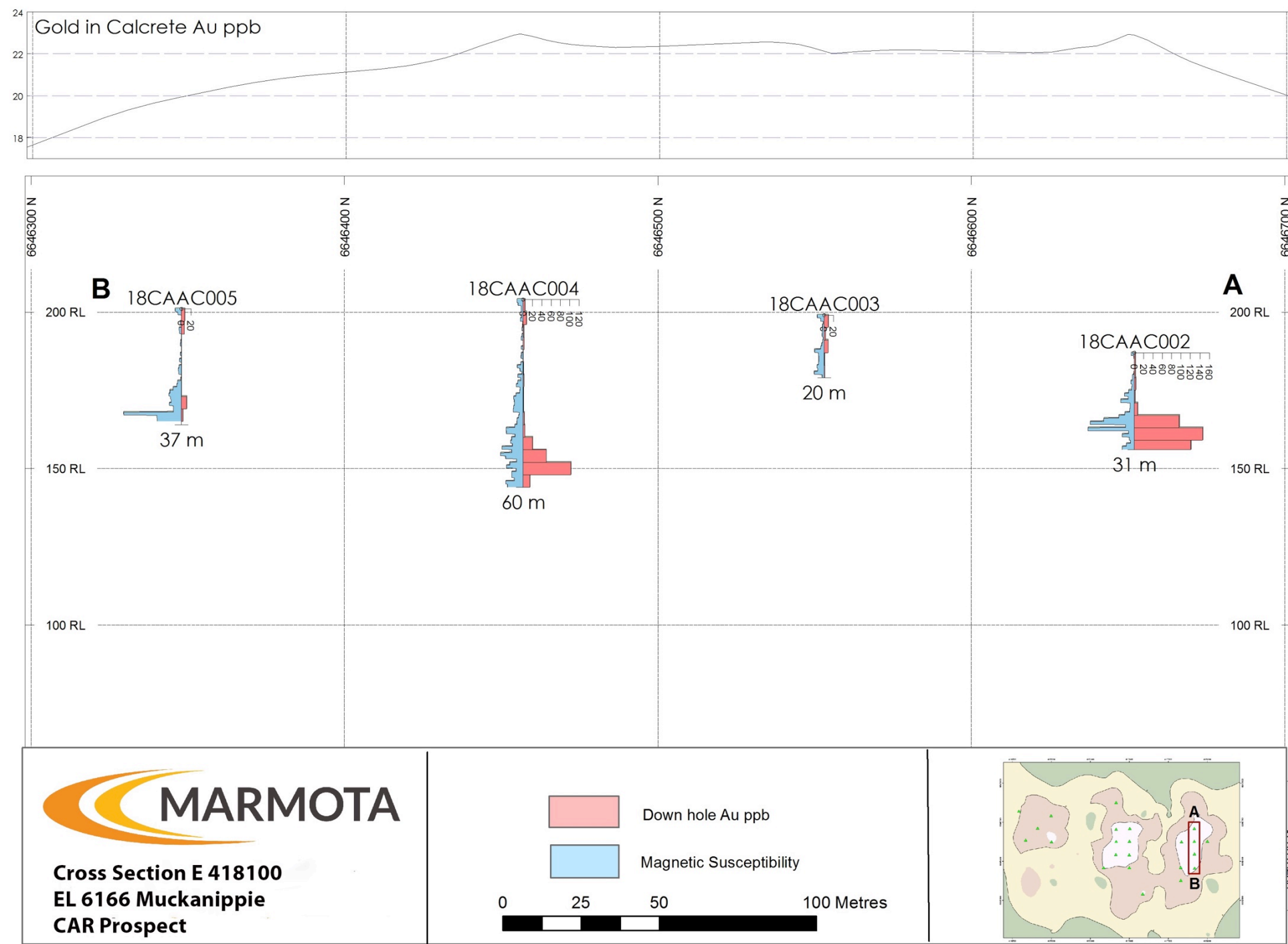
The calcrete gold distribution at CAR is nicely coherent, and has an interesting shape possibly representing a mineralised Hiltaba suite intrusive. 5



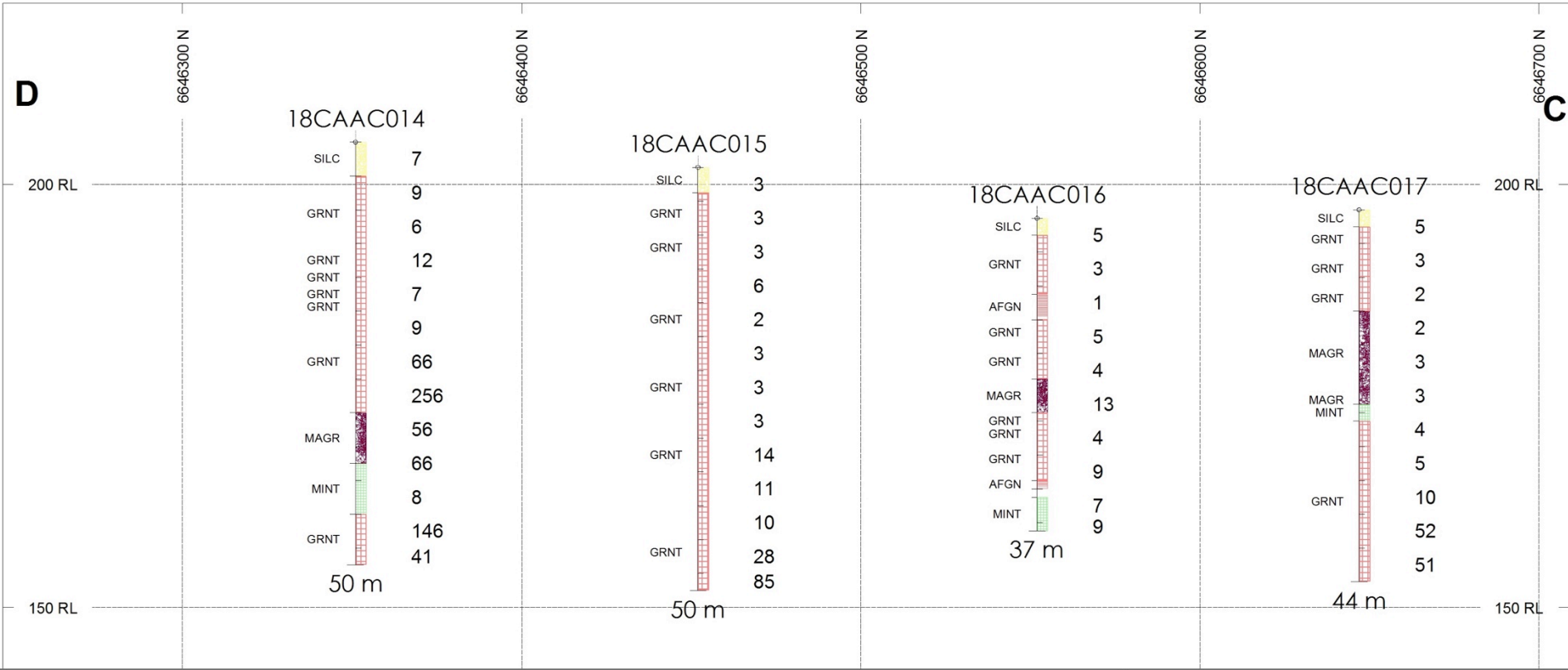
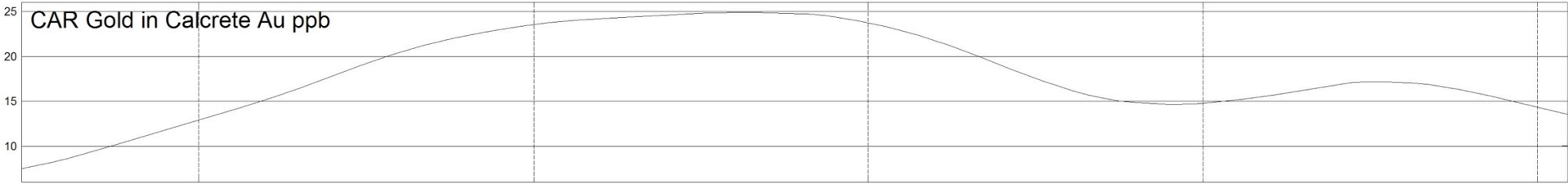
2018 Recon  
AC Holes  
on Magnetic  
Image



Cross-section  
at A-B



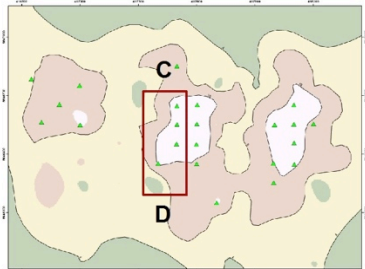
Cross-section  
at C-D



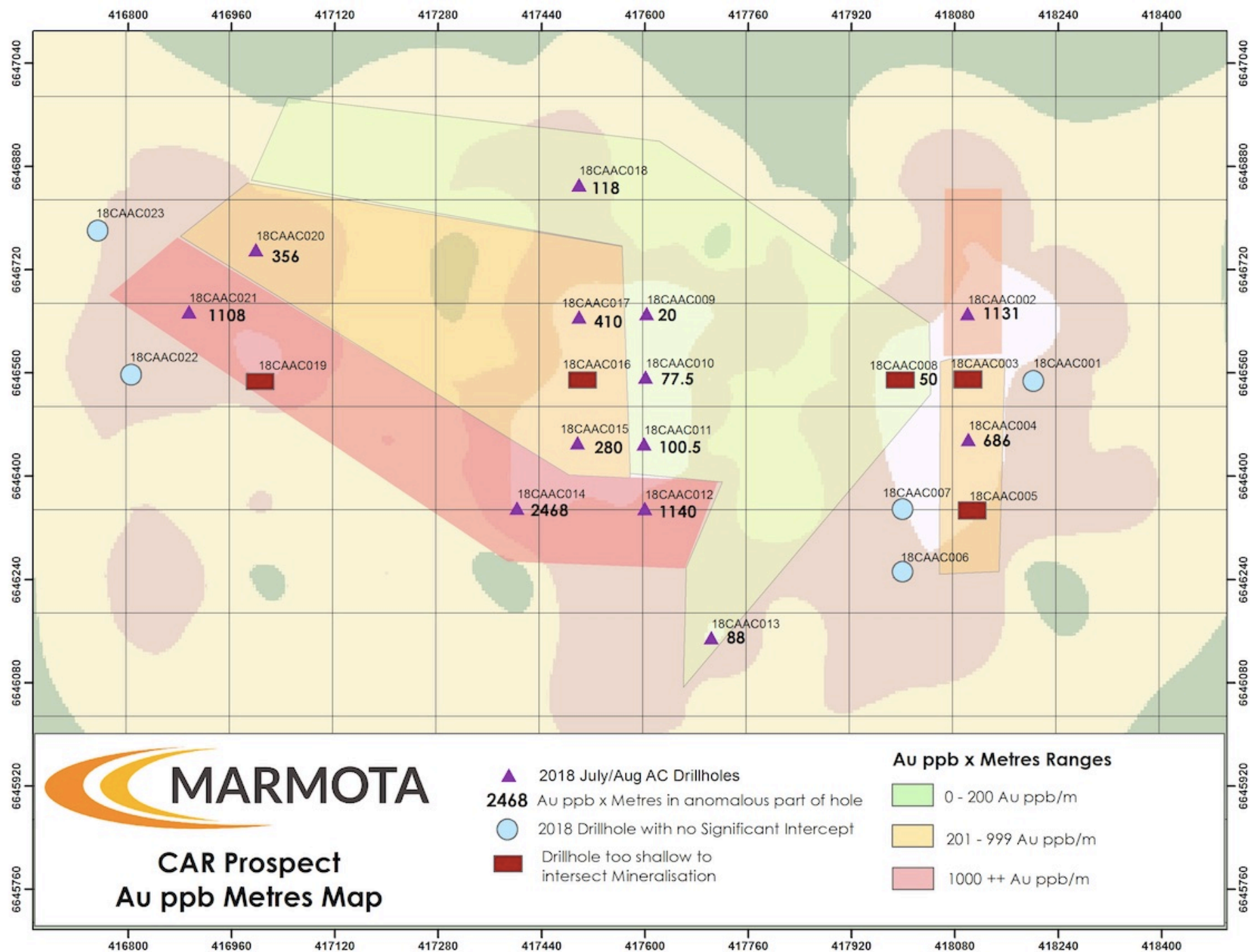
Cross Section E 417444  
Section C-D CAR Prospect  
EL 6166 Muckanippie

SILC = Silcrete  
AFGN = Alkali Feldspar  
GRNT = Granite  
MAGR = Mafic Granite  
MINT = Mafic Intrusive

Au ppb Values right of trace







# Disclaimer

## Disclaimer

This presentation has been prepared by Marmota Limited (“MEU”). The information contained in this presentation is a professional opinion only and is given in good faith. Certain information in this document has been derived from third parties and though MEU has no reason to believe that it is not accurate, reliable or complete, it has not been independently audited or verified by MEU. Any forward-looking statements included in this document involve subjective judgement and analysis and are subject to uncertainties, risks and contingencies, many of which are outside the control of, and may be unknown to, MEU. In particular they refer only to the date of this document they assume the success of MEU’s strategies, and they are subject to significant regulatory, business, competitive and economic risks and uncertainties.

Actual future events may vary materially from those in the forward looking statements. Recipients of this document are cautioned not to place undue reliance on such forward-looking statements. MEU makes no representation or warranty as to the accuracy, reliability or completeness of information in this document and does not take responsibility for updating any information or correcting any error or omission which may become apparent after this document has been issued. To the extent permitted by law, MEU and its officers, employees, related corporations and agents, disclaim all liability, whether direct, indirect or consequential for any loss or damage arising out of, or in connection with, any use or reliance on this presentation or information.

## Cautionary Statement

Estimates of exploration target sizes mentioned above should not be misunderstood or misconstrued as estimates of Mineral Resources. The estimates of exploration target sizes are conceptual in nature and there has been insufficient results received from drilling completed to date to estimate a Mineral Resource compliant with the JORC Code (2004) guidelines. Furthermore, it is uncertain if further exploration will result in the determination of a Mineral Resource.

## Forward Looking Statement

This report may contain forward looking statements that are subject to risk factors which are based on MEU’s expectations relating to future events. Forward-looking statements are subject to risks, uncertainties and other factors, many of which are outside the control of MEU, which could cause actual results to differ materially from such statements. MEU makes no undertaking to update or revise the forward-looking statements made in this report to reflect events or circumstances after the date of this release.

## Competent Persons Statement

Information in this exploration update relating to Exploration Targets, Exploration Results and Mineral Resources is based on information compiled by Dr Kevin Wills, who is a Member of the Australasian Institute of Mining and Metallurgy. He has sufficient experience which is relevant to the styles of mineralisation, metallurgical testwork and types of deposits under consideration and to the activities being undertaken to qualify as a Competent Person as defined in the 2012 Edition of the “Australasian Code of Reporting of Exploration Results, Mineral Resources and Ore Reserves.” Dr Wills consents to the inclusion in this report of the matters based on his information in the form and context in which it appears.

---

For further information, please contact: **Dr Kevin Wills** Head of Exploration  
Email: [kevin@marmota.com.au](mailto:kevin@marmota.com.au)  
Phone: (08) 8294-0899

