



State Gas Limited
(ACN 617 322 488)

PO Box 10348
BRISBANE QLD 4000

ASX RELEASE

09 December 2019

Revised Operational Update – Reid’s Dome Project

State Gas Limited (ASX: GAS) (“State Gas” or “the Company”) advises that the announcement lodged this morning ‘Operational Update – Reid’s Dome Project’ has been amended and an updated version follows.

The following sentence has been amended and all other material remains the same.

‘The water level in Nyanda-4 is currently 233m below the well surface level, and the de-watering process has reduced the bottom hole pressure by 377 psi.’

ENDS

FOR FURTHER INFORMATION

Lucy Snelling

Chief Executive Officer

Phone: 0439 608 241

e-mail: lucy@stategas.com

Richard Cottee

Executive Chairman

Phone: 0458 517 850

e-mail: richard@stategas.com

www.stategas.com



State Gas Limited
(ACN 617 322 488)

PO Box 10348
BRISBANE QLD 4000

ASX RELEASE

09 December 2019

Operational Update – Reid’s Dome Project

Highlights:

- Serocold-1 spudded on 6 December 2019, with drilling and testing expected to be completed within approximately two weeks.
- Currently at 269m depth at Serocold-1, pulling out of hole to DST the Cattle Creek Sandstone.
- Nyanda-4 well placed on production test on 4 December and is currently de-watering.
- The increasing casing pressure being recorded at Nyanda-4 during early de-watering indicates that the well has already commenced desorption of gas from the coals and is a positive sign for future gas production.
- Aldinga East-1A (Cattle Creek Formation) wellhead gas sample tested by an independent laboratory confirmed 97.88% methane (i.e. pipeline quality gas).
- Essential data is being acquired for the Company’s **Target 2021** Gas-to-Market strategy.

State Gas Limited (ASX: GAS) (“State Gas” or “the Company”) is pleased to provide a further update on field activities at its Reid’s Dome Gas Project (PL 231).

As outlined in the Company’s release of 3 December 2019, the field season at the Reid’s Dome Gas Project is drawing to an exciting end with frenetic activity underway to complete work required to inform the planning of the Company’s **Target 2021** Gas-to-Market strategy.

Serocold-1

Located in the centre of PL 231, approximately half way between the Aldinga East-1A and Nyanda-4 wells (refer *Figure-1*), Serocold-1 has been located to provide important information about the extent of coals and gas throughout the Reid’s Dome Gas Project.

As the final well in the current field program, Serocold 1 was spudded on 6 December and is currently drilling ahead at 269m. After a 7” surface casing was set and cemented, Silver City Drilling ‘SCD’ Rig #25 is currently drilling below the 7” casing using a 6-1/8” drill bit.

Total Depth is planned for 1200m, within the prospective Reid's Dome Beds coal interval.

Nyanda-4

The first dedicated coal seam gas well in the Reid's Dome Gas Project, Nyanda 4, was drilled by State Gas in November 2018.

Nyanda-4 was placed on production test on 4 December 2019, with water being pumped-down in a controlled manner to decrease the hydrostatic pressure within the well in order to release gas in the coal seams.

The water level in Nyanda-4 is currently 233m below the well surface level, and the de-watering process has reduced the bottom hole pressure by 377 psi.

In a positive sign for future gas production from Nyanda-4 and the Reid's Dome coals, the increasing casing pressure being recorded within the Nyanda-4 well during early de-watering indicates that the well has already commenced desorption of gas from the coals.

Aldinga East-1A

The testing being conducted at Aldinga East 1A was completed on 5 December and included four successful Drill Stem Tests.

The pressure data acquired during testing reconfirmed the presence of gas within the Cattle Creek Formation sandstone at Aldinga East-1A.

A down-hole gas sample taken from the well was analysed by an independent laboratory as containing 97.88% methane (i.e. pipeline quality gas).

Permeability testing at Aldinga East-1A has proven difficult, with the sandstones within the well having absorbed significant drilling brine during the shut-in period of two months prior to testing. This absorption of drilling brine appears to have impaired the surrounding permeability of the reservoir within the well, reducing the reliability of permeability testing.

Target 2021 Gas-to-Market Strategy

This testing and drilling information being acquired during the 2019 field program at Reid's Dome is providing essential information for State Gas to design the pilot project for 2020 in order to optimise gas production and reserve upgrades in line with the Company's **Target 2021** Gas-to-Market strategy.

Further updates will be provided as additional results become available.

ENDS

FOR FURTHER INFORMATION

Lucy Snelling

Chief Executive Officer

Phone: 0439 608 241

e-mail: lucy@stategas.com

Richard Cottee

Executive Chairman

Phone: 0458 517 850

e-mail: richard@stategas.com

www.stategas.com

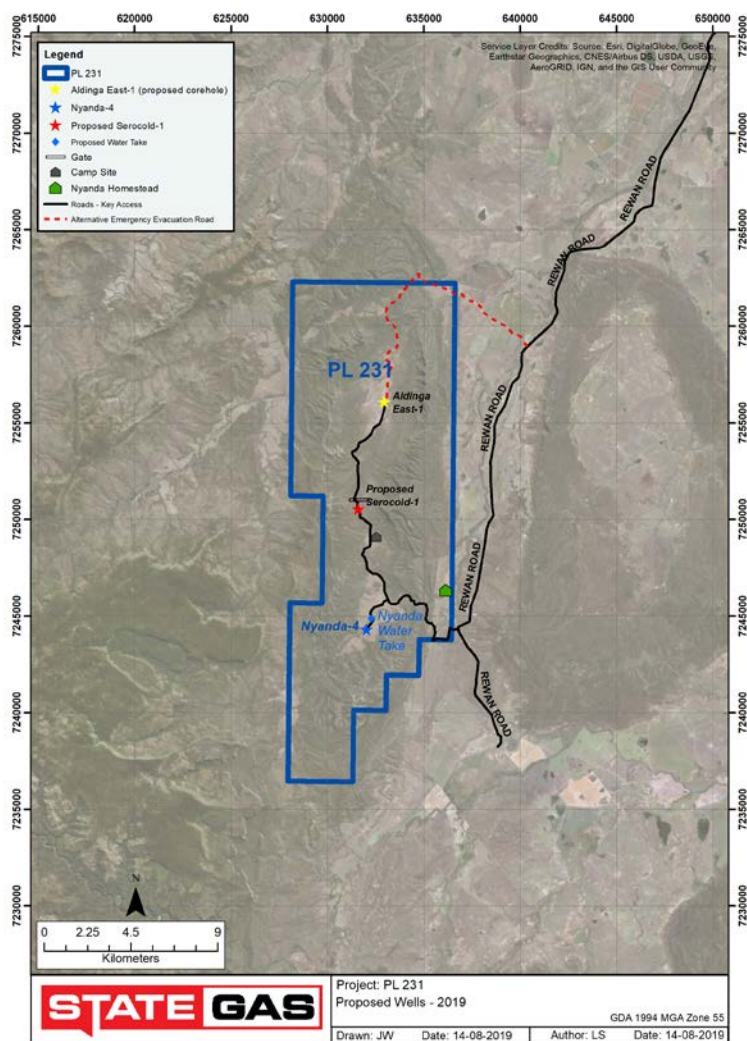


Fig 1: Location of Aldinga East-1A, Nyanda-4 and proposed Serocold-1 wells