



# DEVELOPING DOMESTIC PHOSPHATE SUPPLY IN SOUTHERN BRAZIL

# DISCLAIMER

---



This document has been prepared as a summary only, and does not contain all information about Aguia Resources Limited (the "Company") assets and liabilities, financial position and performance, profits and losses, prospects and the rights and liabilities attaching to the Company's securities. This document should be read in conjunction with any public announcements and reports (including financial reports and disclosure documents) released by Aguia Resources Limited. The securities issued by the Company are considered speculative and there is no guarantee that they will make a return on the capital invested, that dividends will be paid on the Shares or that there will be an increase in the value of the Shares in the future. Further details on risk factors associated with the Company's operations and its securities are contained in the Company's prospectuses and other relevant announcements to the Australian Securities Exchange.

This document includes information, statements, beliefs and opinions which are forward-looking, and which reflect current estimates, expectations and projections about future events. Statements containing the words "believe", "expect", "intend", "should", "seek", "anticipate", "will", "positioned", "project", "risk", "plan", "may", "estimate" or, in each case, their negative and words of similar meaning are intended to identify forward-looking information. By its nature, forward-looking information involves a number of known and unknown risks, uncertainties and assumptions concerning, among other things, the Company's anticipated business strategies, anticipated trends in the Company's business, that could cause actual results or events to differ materially from those expressed or implied by the forward-looking information. These risks, uncertainties and assumptions could adversely affect the outcome and financial effects of the plans and events described herein. In addition, even if the outcome and financial effects of the plans and events described herein are consistent with the forward-looking information contained in this document, those results or developments may not be indicative of results or developments in subsequent periods. There may be factors and risks that cause actions, events or results not to be as anticipated, estimated or intended. Forward-looking information contained in this document is based on the Company's current estimates, expectations and projections, which the Company believes are reasonable as of the current date. The Company can give no assurance that these estimates, expectations and projections will prove to have been correct. You should not place undue reliance on forward-looking information, which is based on the information available as of the date of this document. Forward-looking information contained in this document is made of the date of this document and, expect as require by applicable law, the Company assumes no obligation to update or revise them to reflect new events or circumstances. Although the company believes that its expectations reflected in the forward-looking statements are reasonable, such statements are subject to significant business, economic and competitive uncertainties and contingencies associated with exploration and/or mining which may be beyond the control of the Company which could cause actual results or trends to differ materially and no assurance can be given that actual results will be consistent with these forward-looking statements. Various factors could cause actual results to differ from these forward-looking statements include but not limited to price fluctuations, exploration results, reserve and resource estimation, environmental risks, physical risks, legislative and regulatory changes, political risks, project delay or advancement, ability to meet funding requirements, factors relating to property title, dependence on key personnel, share price volatility, approvals and cost estimates, the potential that the Company's projects may experience technical, geological, metallurgical and mechanical problems, changes in product prices and other risks not anticipated by the Company or disclosed in the Company's published material. The Company makes no representations as to the accuracy or completeness of any such statement of projections or that any forecasts will be achieved.

Additionally, the Company makes no representation or warranty, express or implied, in relation to, and no responsibility or liability (whether for negligence, under statute or otherwise) is or will be accepted by the Company or by any of their respective officers, directors, shareholders, partners, employees, or advisers as to or in relation to the accuracy or completeness of the information, statements, opinions or matters (express or implied) arising out of, contained in or derived from this presentation or any omission from this presentation or of any other written or oral information or opinions provided now or in the future to any interested party or its advisers. In furnishing this presentation, the Company undertakes no obligation to provide any additional or updated information whether as a result of new information, future events or results or otherwise. The Company does not purport to give financial or investment advice. No account has been taken of the objectives, financial situation or needs of any recipient of this document. Nothing in this material should be construed as either an offer to sell or a solicitation of an offer to buy or sell securities. It does not include all available information and should not be used in isolation as a basis to invest in the Company. Recipients of this document should carefully consider whether the securities issued by the Company are an appropriate investment for them in light of their personal circumstances, including their financial and taxation position. The information contained in this document contains confidential information pertaining to the business, operations and assets of the Company and certain assets being considered for acquisition.

# AGUIA: A Brazilian Fertilizer Company



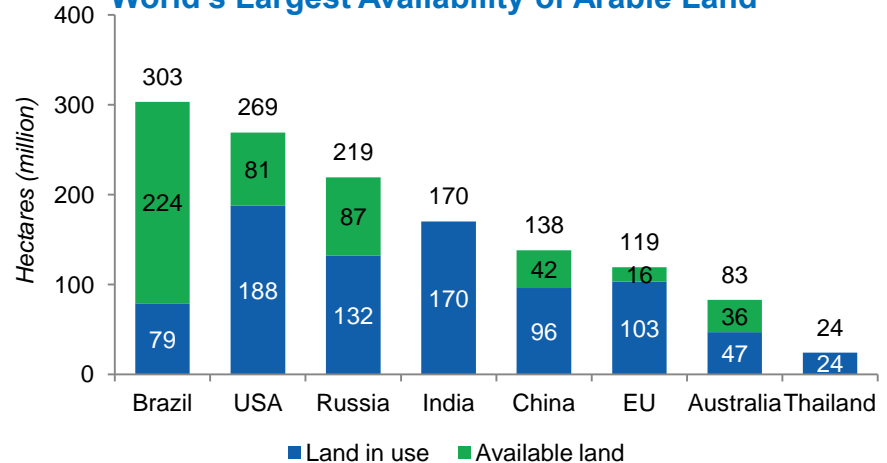
- Aguiá Resources is focused on becoming the **sole source of domestic phosphate supply** to the fertilizer market in southern Brazil
- Trade-off studies completed as part of ongoing BFS indicating a significant reduction (up to 50%) in both CAPEX and OPEX for **Três Estradas**
- Ideal location with proximity to local infrastructure (roads, rail, power, port) in a major **farming region that imports 100% of phosrock**
- Named a strategic development project by the government of Rio Grande Do Sul State
- Raised AUD\$20M in the last 18 months and increased institutional shareholder ownership by approximately 70%
- MOU signed with US Strategic Investor, Nebari, to fund up to 100% of CAPEX for **Três Estradas** via commercially priced debt subject to certain conditions such as a definitive agreement
- Environmental Impact Assessment submitted and permitting well underway



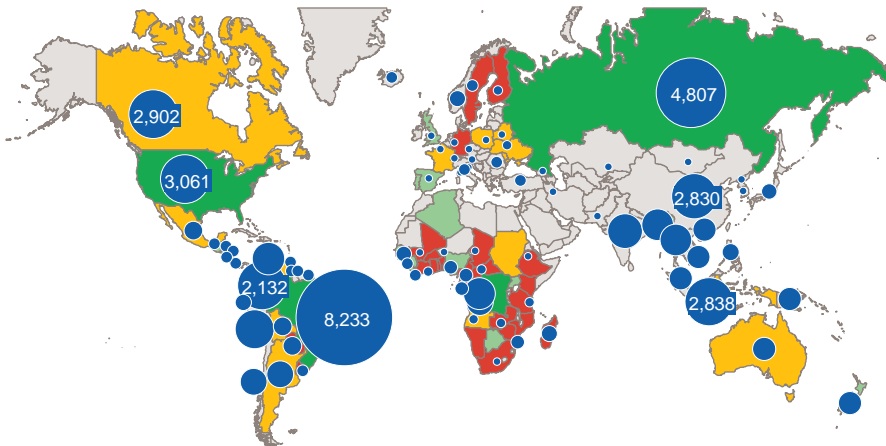
# Global Agriculture Powerhouse

- Global grain output will have to increase by 50% and meat output will have to increase by 200% to meet global demand based on FAO growth projections
- Brazil has the world's largest availability of unused arable land and the most renewable water
- In 30 years Brazil has transformed from a food importer to one of the world's largest breadbaskets with agriculture representing **20% of GDP and exports now totalling US\$175bn per annum**

World's Largest Availability of Arable Land<sup>1</sup>



World's Largest Availability of Fresh Water (bn m<sup>3</sup>/yr)<sup>1</sup>



Export Commodity	Brazil's Global Rank <sup>2</sup>
Beef	1
Coffee	1
Poultry	1
Sugarcane	1
Ethanol	1
Orange Juice	1
Soybeans	2
Tobacco	2
Corn	3
Cotton	4

Sources: <sup>1</sup>United Nations (UN) World Population Prospects, <sup>2</sup>United States Department of Agriculture

# Domestic Cost Advantage

- Brazil is the world's 3<sup>rd</sup> largest consumer of fertilizer, but accounts for only 4% of global fertilizer production
- Brazil imports 65% of its phosphate and Southern Brazil is 100% reliant on phosphate imports with no new mines planned or under development in Southern Brazil
- **Agua expects to have a sustained cost advantage to local fertilizer blenders of > \$50/t compared to imports<sup>1</sup> making our production of major strategic importance for the region**
- Southern Brazil currently consumes 700,000 tonnes of phosphate imports annually<sup>2</sup>
- Timac and Yara are the major SSP producers at Rio Grande port with combined capacity of 1.1 Mt per annum of fertilizer production
- Established aglime, DCP, cement and thermal coal markets are expected to provide secondary revenue stream for a calcite by-product

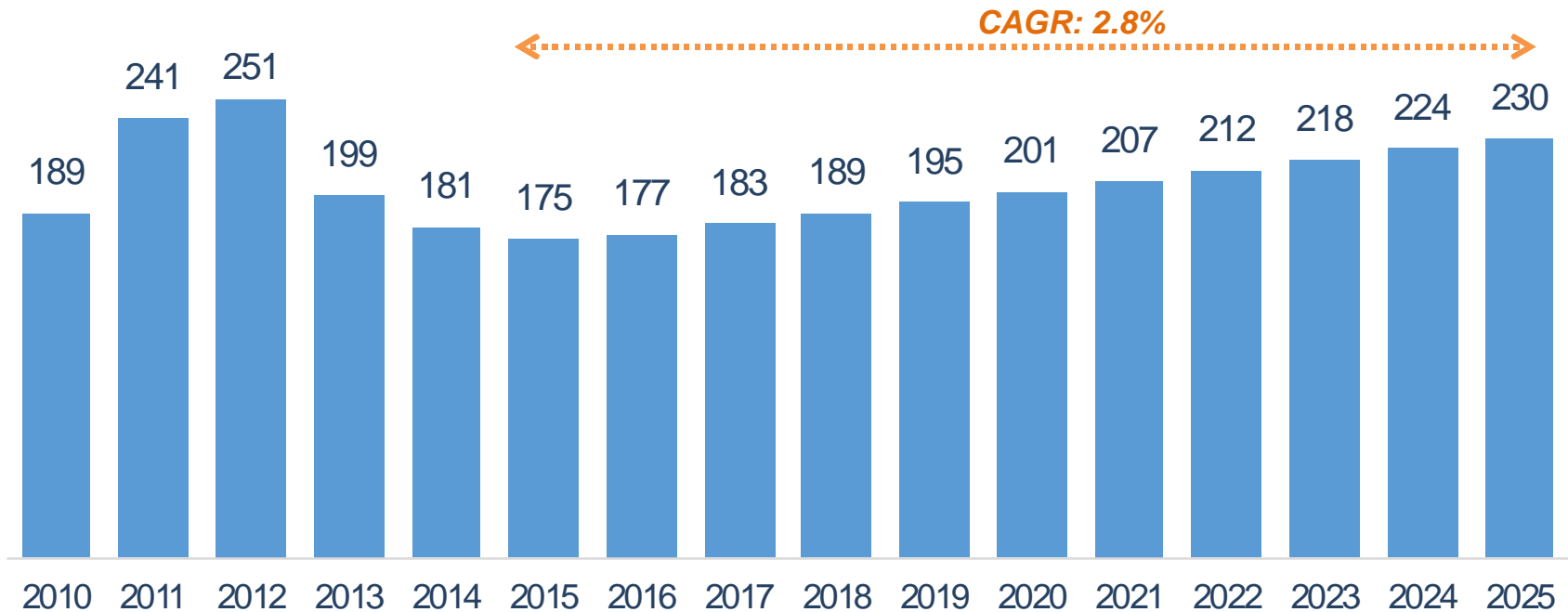


<sup>1,2</sup> Includes Port Handling, AFMM(Brazilian Freight Tax @25% of freight and handling, and demurrage (at \$0.50/t/day, estimated at \$10/t), "Price and Competitiveness: Rock Price Forecast", Agroconsult, June 2015

# Phosrock Price Forecast



PhosRock Prices – Cleared at Port of Rio Grande (US\$/t)



Source: Agroconsult (PEA)



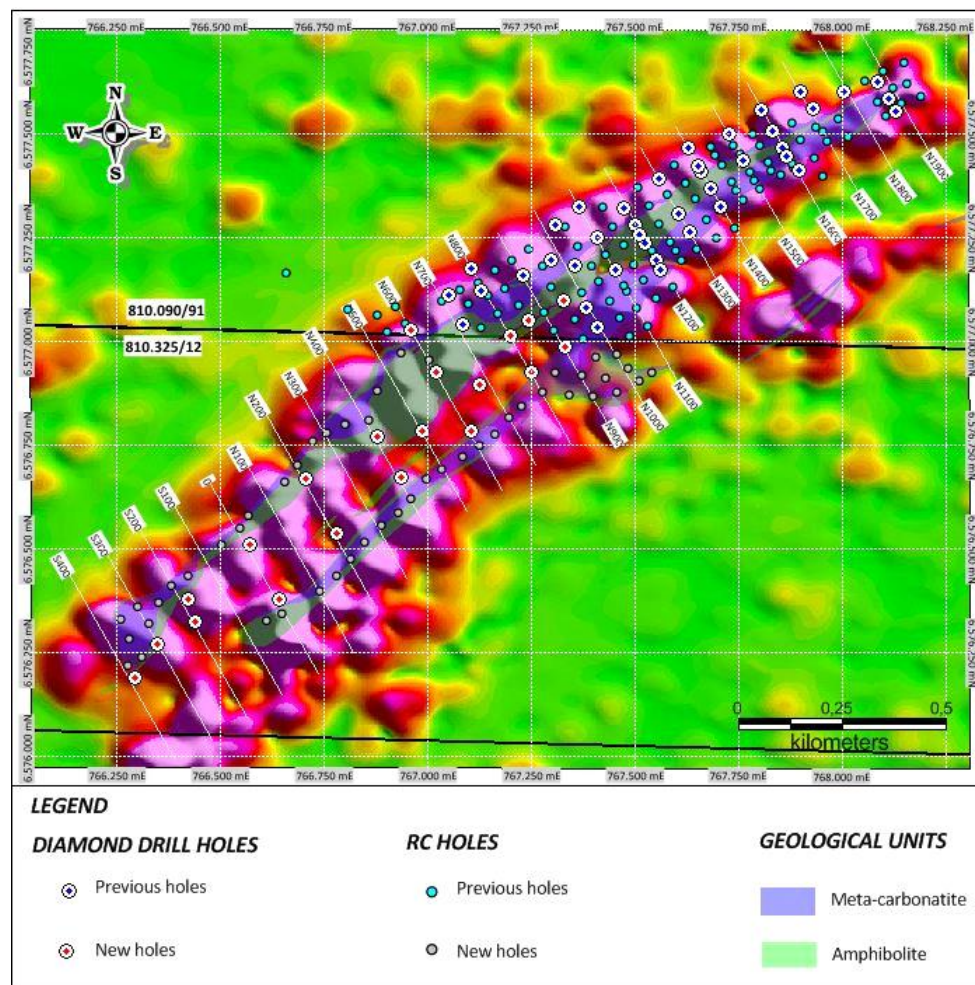
# Rio Grande Do Sul: Três Estradas

- **JORC/43-101 compliant resource :**
  - 0.745Mt Measured @ 4.42%  $P_2O_5$
  - 15.07Mt Indicated @ 4.75%  $P_2O_5$
  - 58.9Mt Inferred @ 3.97%  $P_2O_5$ <sup>1</sup>
- 38,000 meters of drilling now complete; full reserve expected end of August 2017



Rail going through the property

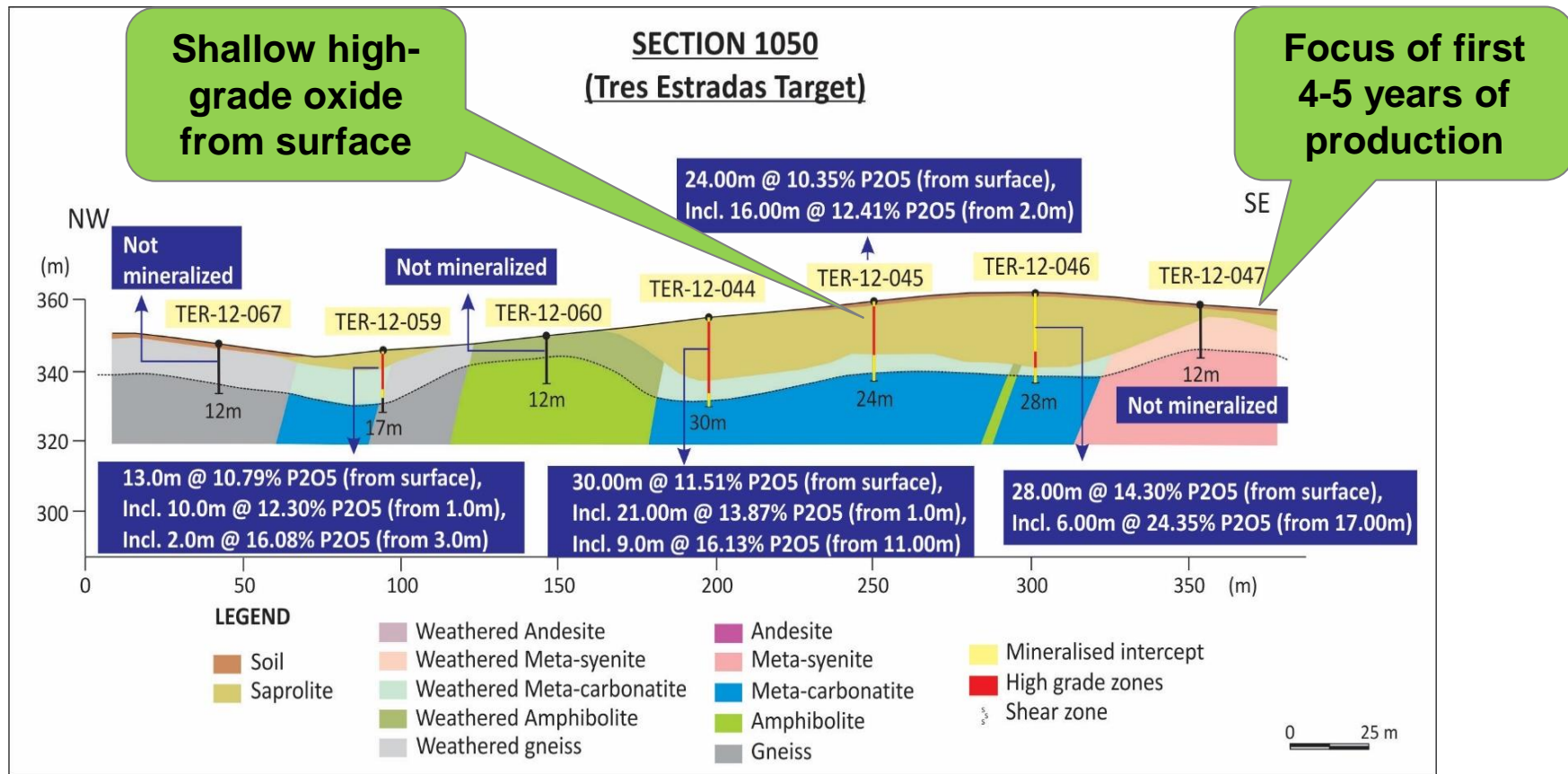
Sample from  
TRÊS ESTRADAS



<sup>1</sup> See ASX Release of 12<sup>th</sup> July 2016

# High-Grade Oxide Ore At Surface

- Shallow high-grade oxide in the first 25 meters from surface provides significant optionality with trade-off studies

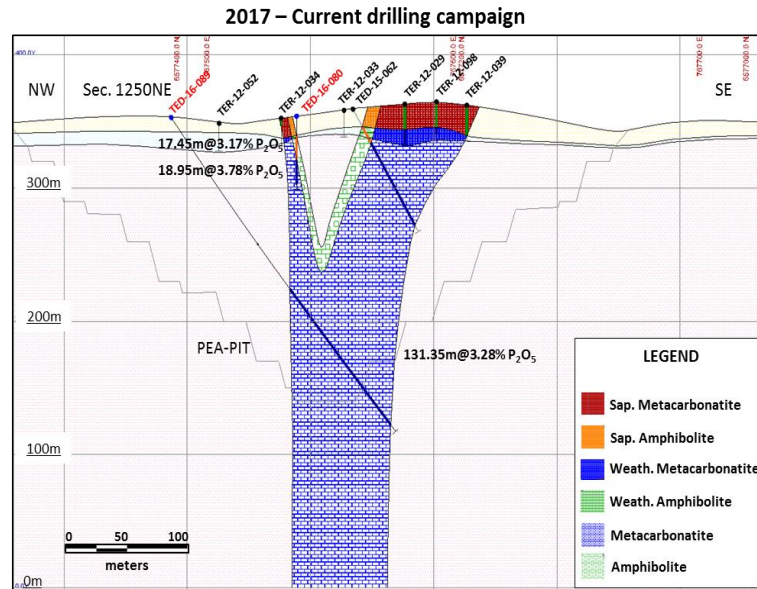
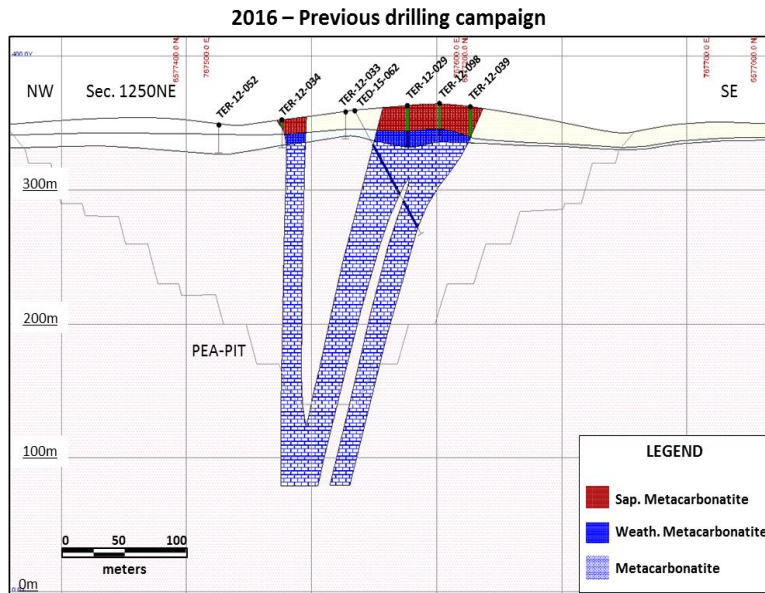




# 2016/2017 Completed Drilling Campaign



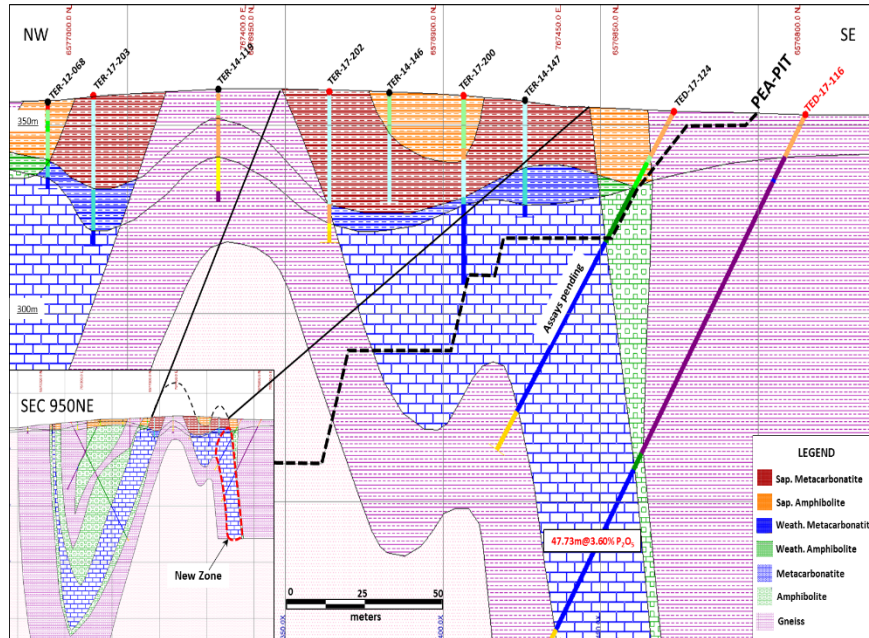
- Infill program to convert our inferred resources to measured and indicated
- Substantial ore horizon thickening has potential to improve strip ratio and reduce OPEX



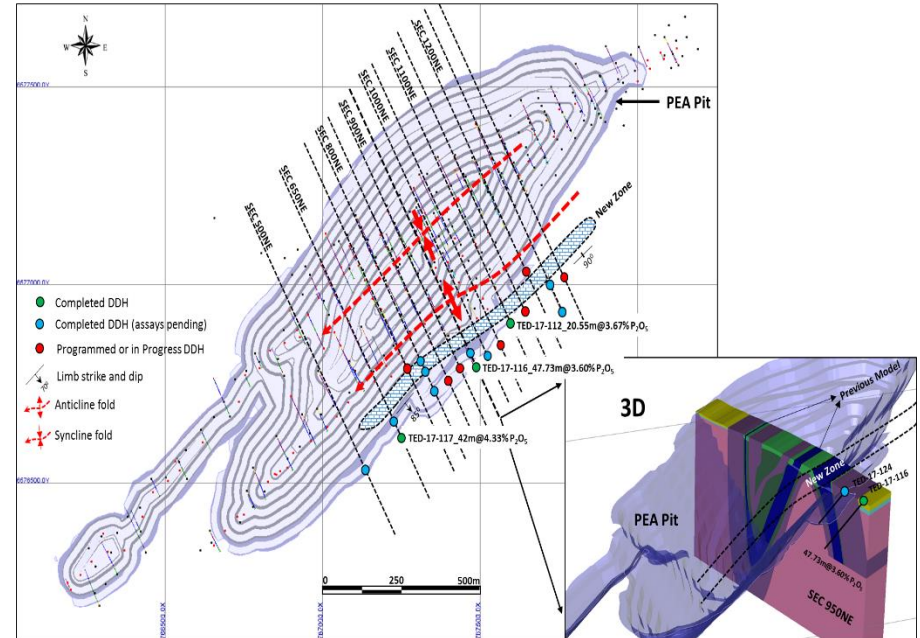
Drilling section 1250 NE of the Três Estradas deposit, showing the thickening of the carbonatite at depth (right) relative to the previous resource model (left)

# New Southeast Zone Discovery

- New shallow discovery identified over +700 meters and remains open
- Potential to increase shallow ore for early production



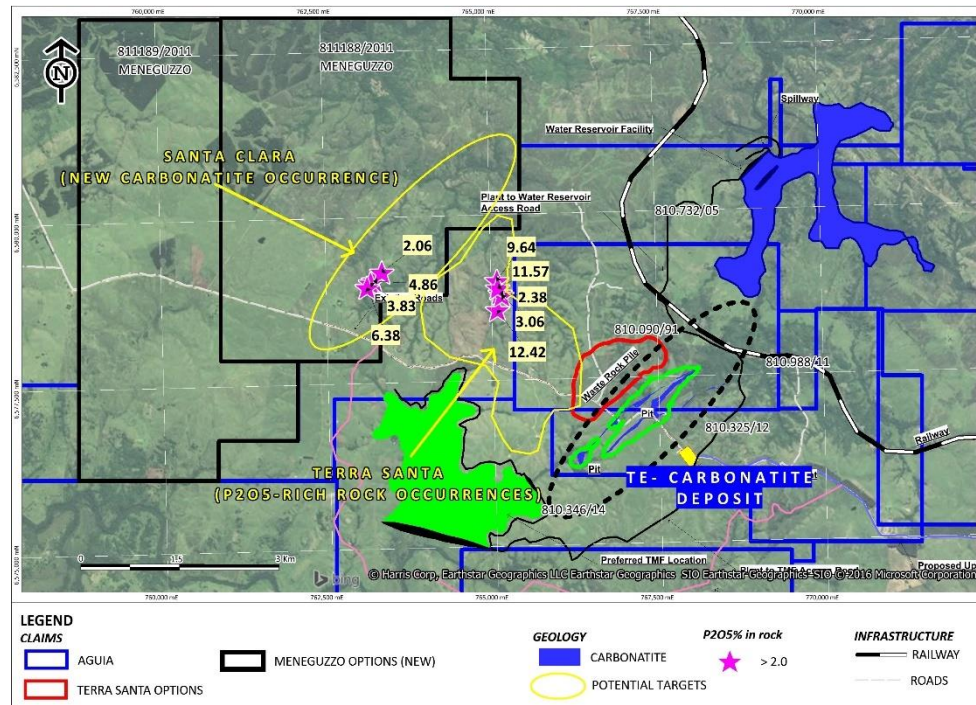
Drilling section 950NE of the Três Estradas Deposit, showing the new southeast zone as outlined in red in the inset at bottom left



Insert on the bottom right shows cross section with the new carbonite zone intercepted by diamond drill hole TED-17-116



# Rio Grande Do Sul Belt Consolidation



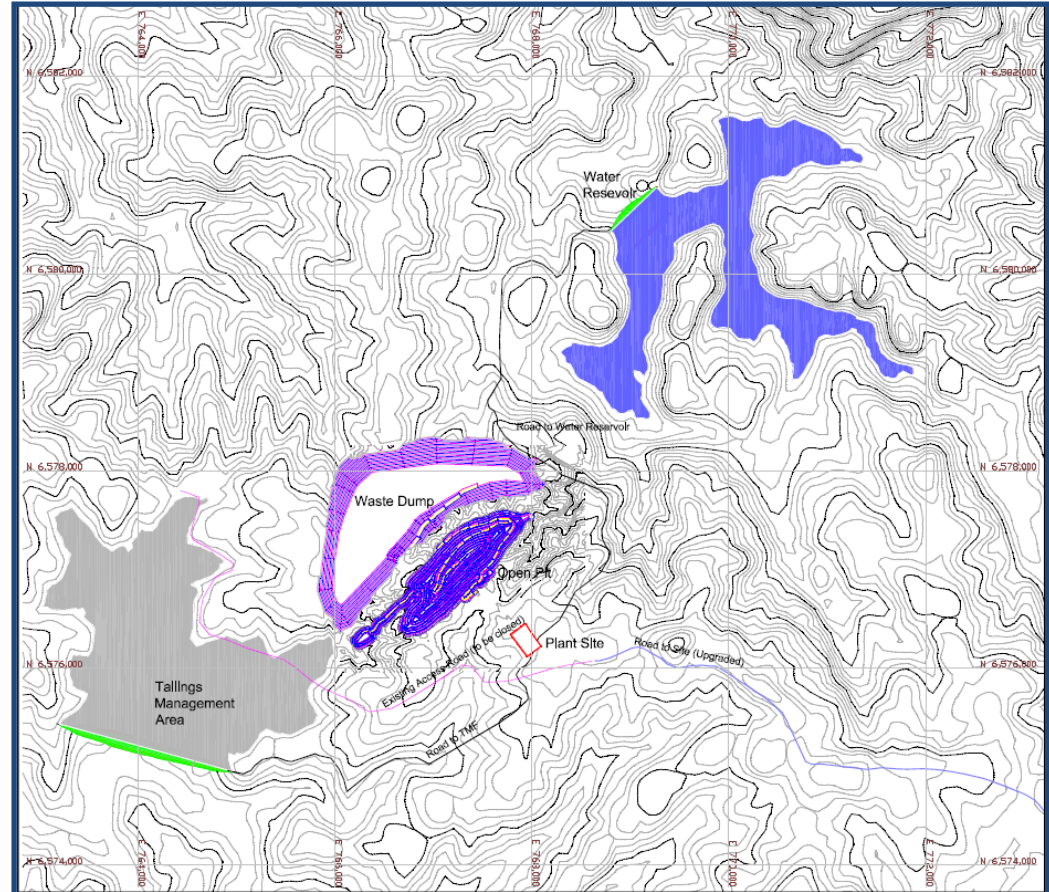
Map showing Três Estradas carbonatite, the Terra Santa option acquired in December 2015 and the new Santa Clara occurrence 4.5 km to the northwest acquired in June 2016.

- Adjacent targets being explored in an effort to expand the regional resource
- Option signed on 4,500 ha **Terra Santa** located adjacent to Três Estradas, expanding footprint by 30%
- Initial exploration underway in a zone where up to 11.57%  $P_2O_5$  was returned from grab rock samples at surface<sup>2</sup>
- Option signed on 3,553 ha **Santa Clara** which includes 2km long geophysical anomaly with the same pattern as Três Estradas<sup>3</sup>
- Initial grab samples returned up to 6.37%  $P_2O_5$

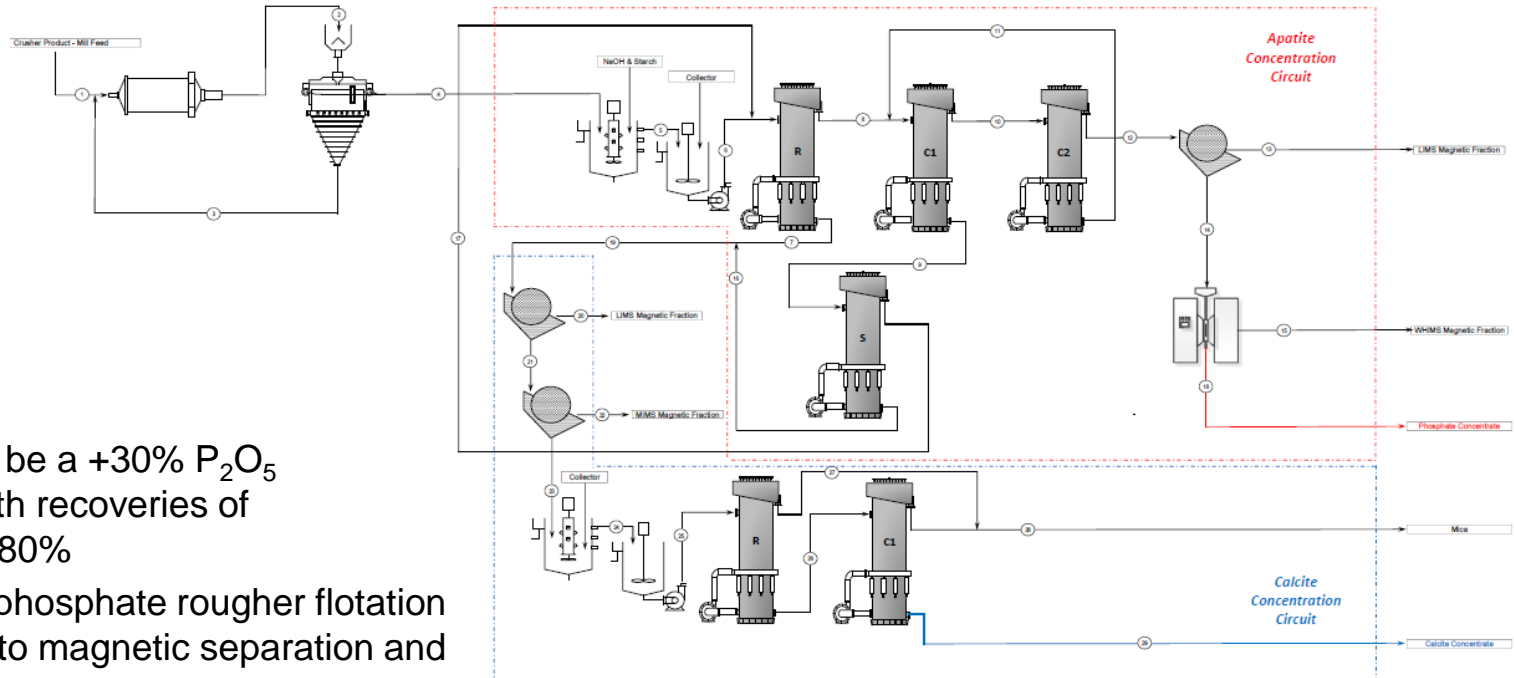


# Mining Plan

- Open-pit truck and shovel operation mining Três Estradas
- 14 year life of mine
- 59 million tonnes of ROM mined with a strip ratio of 3.1:1 (waste to phosphate)
- ~50% increase in the mined tonnes compared to 2015 mining model
- Total phosphate rock production of 6.6 million tonnes over life of mine, averaging 466,000 tonnes per year
- Total calcite production of 22.7 million tonnes over life of mine, averaging 1.6 million tonnes per year



# Processing Plant



- Production will be a +30%  $P_2O_5$  concentrate with recoveries of approximately 80%
- Tailings of the phosphate rougher flotation will be subject to magnetic separation and mica flotation to produce high quality calcite concentrate
- Três Estradas has similar metallurgical properties as Vale's Cajati mine in Brazil and Yara's Siilinjärvi mine in Finland

- Average annual feed of 4.5 million tonnes per year or 13,700 tonnes per day
- Average annual production of 466,000 tonnes of phosphate concentrate and 1.6 million tonnes of by-product calcite

(Annual feed & production to be scaled as a result of the engineering trade-off studies)



# High Quality Calcite By-Product

- Metallurgical studies conducted by Eriez Flotation Division confirm a high quality calcite by-product suitable for aglime can be produced from the Três Estradas deposit<sup>1</sup>
- From the rougher tailings of the phosphate flotation, a calcite concentrate grading 48.55% CaO was produced with a CaO recovery of 83.1%
- Calcite adds an important secondary revenue stream to Três Estradas deposit once in production
- Calcite markets include aglime field spreading, animal nutrition, cement production and thermoelectric plants



<sup>1</sup> See ASX Release of 5<sup>th</sup> July 2016

# Bankable Feasibility Study Fundamentals



## Definition Phase Nov/16 to Apr/17

- Business and Engineering Alignment Meeting – BEAM
- Mineral Reserve
- Collect Basic Data
- Technology Selection
- Process Simplification
- Constructability
- Energy Optimization
- Residues Minimization



We are here!

## Design Phase Dec/17

- Fit for purpose
- Differing structure when possible
- Simple administrative structures
- Cladding and covering buildings when necessary
- Final BFS Report (JORC and NI 43-101)



Freeze Scope

# Engineering Trade-Off Studies

---



- Highly experienced team of contractors engaged to develop the Bankable Feasibility Study of the Três Estradas Phosphate Project – now over 50% complete
- Production scale has been optimized, maximizing project value and establishing a seamless integration into the Southern Brazil phosphate market at approximately 300k per annum of phosphate concentrate
- First 4-5 years of production will focus on the high grade oxide material of +10%  $P_2O_5$  which minimizes the need for crushing and flotation infrastructure at start-up
- Both initiatives of Optimizing Production Scale, mining high grade oxide, and associated reductions in overall footprint will substantially reduce initial CAPEX (up to 50% reduction)
- Proposed use of locally produced coal rather than diesel for drying the phosrock is expected to reduce operating costs (\$17.50/tonne diesel vs. \$2.50/tonne coal)
- Other trade-off studies are ongoing and will be included in the final BFS which will reflect further material reductions in both CAPEX and OPEX once mine is operating
  - Optimization of mine plan and strip
  - Optimization of logistics studies
  - Optimization of flow sheet and by-product production

# Major Advances Last 24 Months

---



## **Liquidity & Shareholder Base:**

- Raised AUD\$20M, increased institutional ownership to ~70%
- Conditional approval for dual listing on TSXV
- Signed MOU with strategic investor to conditionally fund 100% of debt for CAPEX

## **Resource:**

- Completed in excess of 30km of drilling, increased Indicated & Inferred Resource by 130%
- Infill drill campaign to convert Inferred to Measured & Indicated
- Identified new discovery zone

## **Technical Advances:**

- Metallurgical studies confirm top quality phosphate concentrate and a high quality calcite by product, testing work underway at 3 tonne pilot plant
- PEA demonstrates technical and economic viability of Três Estradas
- BFS 50% complete with trade off studies providing material improvements to existing PEA

## **Permitting:**

- EIA submitted to regional authorities and 17 community consultations completed, named a strategic development project by the State of Rio Grande

# Objectives for Next 12 Months

---



## **Liquidity & Shareholder Base:**

- Commence trading on the TSXV and develop a North American presence
- Finalize terms of project financing and commence offtake negotiations

## **Resource:**

- Issue new JORC/43-101 compliant resource based on results of infill drill campaign that converts Inferred Resource to Measure & Indicated
- Initial exploration of claims optioned adjacent to Três Estradas

## **Technical Advances:**

- Complete metallurgical testing work underway at 3 tonne pilot plant
- Complete Bankable Feasibility and finalize mine design and plan

## **Permitting:**

- Obtain Pre-License (LP) after successful review of EIA and commence application for Installation License (LI)
- Continue community outreach and consultation



# Experienced Board & Management



## **Justin Reid, Managing Director**

Geologist and capital markets executive with over 20 years experience focused exclusively in the mineral resource space. Senior positions at Paladin Energy and National Bank Financial, where he directed the firm's sales and trading in the mining sector.

## **Fernando Tallarico, Technical Director**

B.Sc. Geology, M.Sc., Ph.D. and P.Geo. Over 25 years' experience in minerals exploration in South America with Vale, Falconbridge/Noranda, BHP Billiton and junior companies of the fertilizer sector. Has been instrumental in putting together Aguia's portfolio of assets.

## **Guilherme Jacome, Head of Engineering**

With over 15 years of engineering experience, having worked on mining projects in Brazil, Chile, Australia, Canada, Zambia and Mozambique. In his most recent position, Mr. Jacome led a team that successfully completed the Bankable Feasibility Study for a \$2 billion potash project in Brazil in less than a year. Previously, Mr. Jacome was General Manager at Vale S.A.

## **Alfredo Rossetto Nunes, Senior Geologist**

B.Sc. and M.Sc Geology, AusIMM member with over 25 years experience in mineral exploration in South America with Vale and Canadian/Australian junior companies of the noble metals sector. Participated in several grassroots discoveries including, gold, PGE and base metals.

## **Catherine Stretch, Chief Commercial Officer**

Over 15 years experience in capital markets managing companies and funds in the resource sector with expertise in global agriculture. Formerly Chief Operating Officer of a Canadian fund management firm with +\$1bn in AUM.

## **Paul Pint, Executive Chairman**

Mr. Pint, is a capital markets professional with over 20 years of experience in senior positions at various financial institutions and boutique investment banks in Canada. Mr. Pint is a Chartered Professional Accountant and holds a Bachelor of Commerce degree from the University of Toronto.

## **Zargos Hood, Financial Officer**

Mr. Hood brings 19 years of experience in business administration related to auditing, consulting and M&A. The last 10 years of experience within the mining sector included financial, accounting, commercial and logistics management over base metals operations and fertilizer industry in Brazil.

## **David Gower, Director**

Mr Gower has over 25 years' experience in the minerals industry including senior positions with Falconbridge Limited and Noranda Inc (now Xstrata). He is a member of the Association of Professional Geoscientists of Ontario and of the Canadian Institute of Mining.

## **Brian Moller, Non-executive Director**

Mr Moller specializes in capital markets, mergers and acquisitions and corporate restructuring, and has acted in numerous transactions and capital raisings in both the industrial and resources and energy sectors. He has been a partner at the legal firm, HopgoodGanim for 30 years

## **Alec Pismiris, Non-executive Director**

Mr Pismiris has over 30 years' experience in the securities, finance and mining industries. Mr Pismiris is currently a director of several ASX listed companies including Agrimin Limited, Hotcopper Holdings Limited and Pelican Resources Limited. Mr Pismiris is also company secretary of Agrimin Limited and Pelican Resources Limited.

## **Andrew Bursill, Corporate Secretary**

Mr Bursill was appointed as company secretary on 28 September 2010. In addition, Mr Bursill is a director and company secretary of several listed, unlisted and private companies.

# Local Photos



Photos (clockwise from top left): Yara's facility at port of Rio Grande; TIMAC's facility at port of Rio Grande; rolling countryside around Três Estradas; phosphate mineralization at surface; railway line that goes through the property

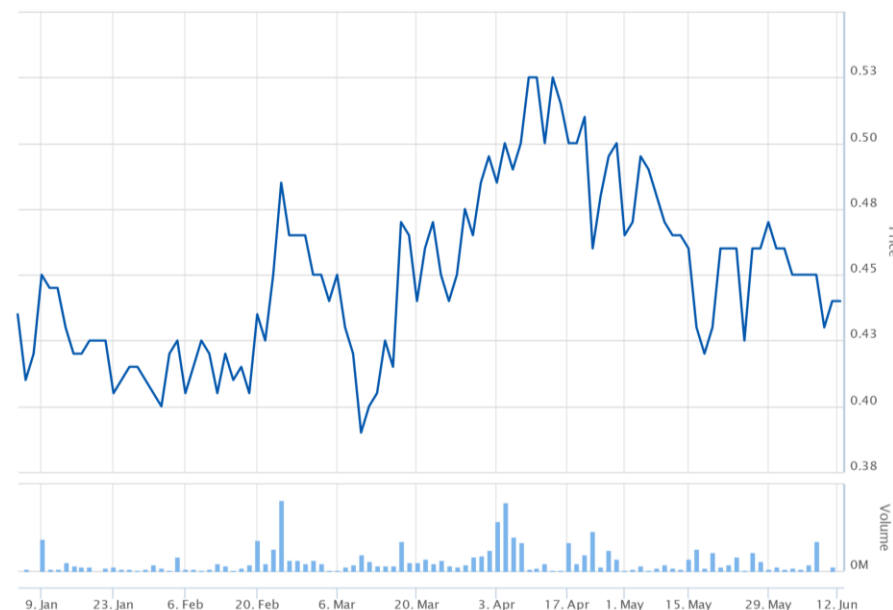
# Capital Structure & Financing Activities



## Fully Diluted Equity

Ordinary Shares issued	90.8m
Options	3.45m
Fully Diluted	94.25m
Undiluted Market Cap at A\$0.44 (15 June 2017)	\$41.5m
Fully Diluted Market Cap at A\$0.44	\$49.3m
52 week range	\$0.36 – 0.73

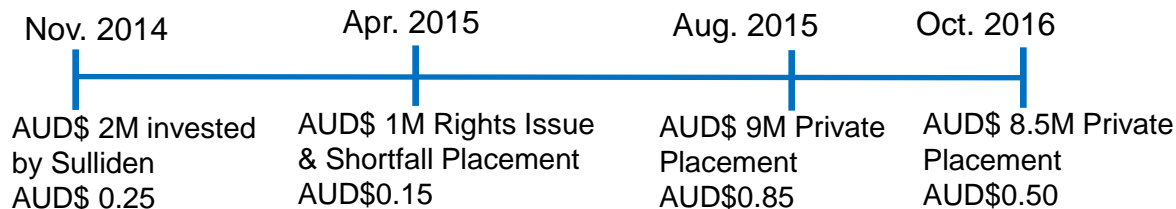
## AGR Performance 2017 YTD



## Major Shareholders

Sulliden Mining Capital	17%
Insiders/Management (ex Sulliden)	7.7%
M&G Investments	8.5%
AGF	3.5%

## Recent Capital Raises





Rice paddies in Rio Grande do Sul –  
an example of local farming





# Pastures and fields of crops in Rio Grande do Sul





## Terrain at Três Estradas – cattle pastures





Terrain at Três Estradas – rolling farm  
fields with visible outcroppings at  
bottom right



Rail line 200 metres from edge of Três Estradas property





**THANK YOU**



# Competent Persons Statement



The Três Estradas Phosphate Project has a current JORC/43-101 compliant mineral resource which includes Measured Resources of 0.745 Mt grading 4.42%  $P_2O_5$ . Indicated Resources of 15.07 Mt @ 4.75%  $P_2O_5$  and Inferred Resources of 58.9 Mt @ 3.97%  $P_2O_5$ .

The Lucena Phosphate Project has a current JORC compliant inferred mineral resource of 55.1Mt grading 6.42%  $P_2O_5$

Information in this presentation is extracted from the following reports, which are available for viewing on the Company's website:

*13 June 2017: Material Cost Improvement in Tres Estradas Trade-off Studies*

*3 April 2017: New Southeast Zone Discovery Proven Over 700 Metres of Strike*

*23 March 2017: Highly Encouraging Results Continue at Três Estradas*

*15 February 2017: Aguia Discovers New Mineralised Zone Extending from Surface at Três Estradas*

*1 February 2017: New Drilling Indicates Significant Thickening at Depth*

*13 December 2016: Infill Drilling Confirms Grades and Thickness of Três Estradas Mineralisation*

*29 November 2016: Definition Drilling for Aguia's Três Estradas BFS Proceeding Well*

*2 November 2016: Aguia Commences Infill Drilling*

*11 October 2016: Aguia Achieves Key Project Development Milestone with Environmental Impact Assessment Submitted for Três Estradas*

*12 July 2016: Aguia's Optimized PEA Unlocks Significant New Value*

*5 July 2016: Aguia Announces Metallurgical Test Results Confirming High Quality Calcite By-Product From Três Estradas Deposit*

*6 June 2016: Aguia Reports Positive New Column Flotation Results from its Flagship Três Estradas Phosphate Project*

*27 January 2016: Drilling Program at Joca Tavares and Três Estradas Delivers Positive Results to Further Strengthen Rio Grande Asset Base*

*9 December 2015: Aguia Signs Option to Expand Phosphate Land Position in Rio Grande*

*17 November 2015: Aguia Advances Exploration and Development Activities at Rio Grande Phosphate Project*

*19 August 2015, Positive preliminary economic assessment demonstrates robust economics for Três Estradas*

*May 11, 2015: Aguia Reports 80% Phosphate Recovery from Oxidized Carbonatite and 65% from Fresh Carbonatite*

*April 27, 2015: Aguia Significantly Increases Três Estradas Phosphate Resource by 130% to 70.1 Million Tonnes*

The Company confirms that it is not aware of any new information or data that materially affects the information included in the original market announcements listed above and, in the case of estimates of Mineral Resources or Ore Reserves that all material assumptions and technical parameters underpinning the estimates in the relevant market announcement continue to apply and have not materially changed. The company confirms that the form and context in which the Competent Person's findings are presented have not been materially modified from the original market announcement.

The technical and scientific information in this presentation, including information that relates to Exploration Targets, Exploration Results, Mineral Resources or Ore Reserves, is based on information compiled by Dr Fernando Tallarico, who is a member of the Association of Professional Geoscientists of Ontario. Dr Tallarico is a full-time employee of the company. Dr Tallarico has sufficient experience that is relevant to the style of mineralisation and type of deposit under consideration and to the activity being undertaken to qualify as a Competent Person as defined in the 2012 Edition of the 'Australasian Code for Reporting of Exploration Results, Mineral Resources and Ore Reserves'. Dr Tallarico consents to the inclusion in the report of the matters based on his information in the form and context in which it appears.





**Enquiries:**

Justin Reid, Managing Director  
[jreid@aguiaresources.com.au](mailto:jreid@aguiaresources.com.au)

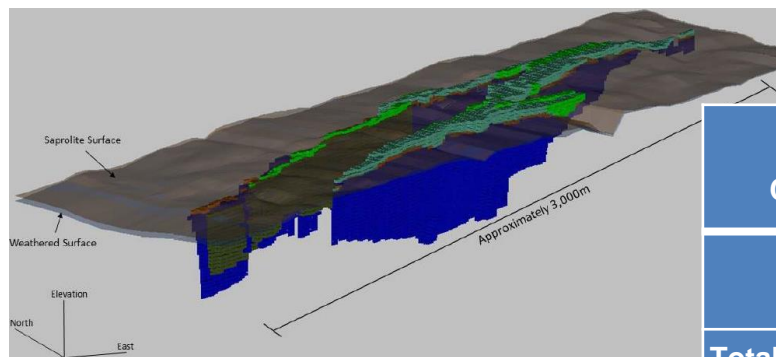
Catherine Stretch, Chief Commercial Officer  
[cstretch@aguiaresources.com.au](mailto:cstretch@aguiaresources.com.au)

Registered Office  
Suite 2, Level 10  
70 Phillip Street  
Sydney NSW 2000,  
Australia  
Tel: +612 9299 9690

Head Office  
Rua Antonio de Albuquerque,  
156 15º andar - Funcionarios  
Belo Horizonte – MG, Brazil  
Tel: +55 31 350 55200

ASX Code: AGR

# Três Estradas Mineral Resource



- Total pit-constrained Jorc/43-101 compliant resource :
  - 745 kt of measured resource grading 4.42%  $P_2O_5$
  - 15 Mt of indicated resource grading 4.47%  $P_2O_5$
  - 58.8 Mt of inferred resource grading 3.97 %  $P_2O_5$

Resource Classification	Domain	Tonnage (T X 1,000)	$P_2O_5$ (%)	CaO (%)	$P_2O_5$ as Apatite (%)	CaO as Calcite (%)
Measured	WMCBT	204	5.23	35.58	12.38	63.68
	MCBT	541	4.11	34.44	9.75	61.63
Total Measured Resources		745	4.42	34.75	10.47	62.19
Indicated	AMSAP	460	6.30	11.27	14.93	20.17
	CBTSA					
	P	1741	10.49	16.88	24.85	30.21
	WMCBT	1545	4.67	34.78	11.07	62.24
	MCBT	11324	3.82	35.01	9.04	62.66
Total Indicated Resources		15070	4.75	32.17	11.25	57.57
Inferred	AMSAP	521	6.09	11.08	14.42	19.82
	CBTSA					
	P	1470	11.65	17.72	27.60	31.71
	WMCBT	796	4.27	35.22	10.11	63.02
	MCBT	52581	3.73	35.42	8.83	63.39
	MAMP	3523	4.01	19.08	9.50	34.14
Total Inferred Resources		58891	3.97	33.78	9.41	60.46

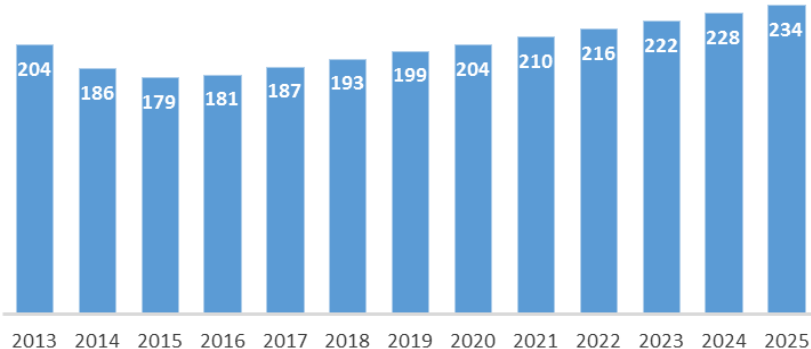
## Audited Mineral Resource Statement\*, Três Estradas Phosphate Deposit Millcreek Mining Group, July, 2016

- Mineral resources are not mineral reserves and have not demonstrated economic viability.
- All numbers have been rounded to reflect relative accuracy of the estimates.
- Mineral resources are reported within a conceptual pit shell at a cut-off grade of 3%  $P_2O_5$ .

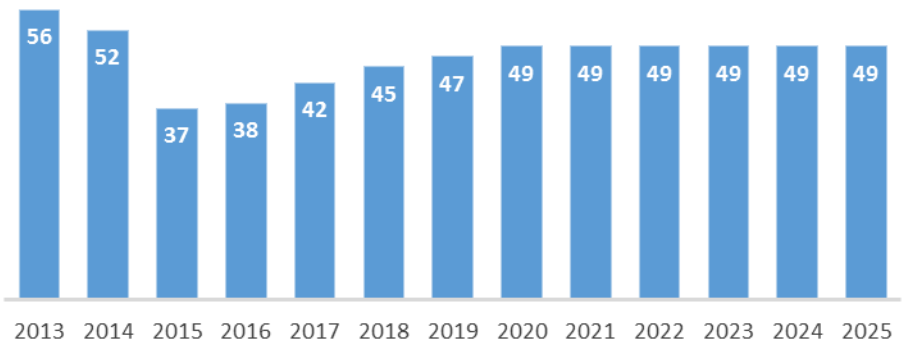
# Principle Assumptions



Average Phosrock Price (US\$/t)



Average Calcite (Agricultural Limestone) Price (US\$/t)



The Preliminary Economic Assessment (PEA) referred to in this presentation relies on the following assumptions:

- A long term price of USD\$ 210/t phosrock for the entire Life of Mine. The price forecast reflects average prices cleared at the main Southern Brazilian ports and includes sea freight charges, demurrage, port costs and taxes.
- A long term price of USD\$ 47/t of calcite (aglime) reflects local prices paid by the final consumer (farmers).

## Other Key Assumptions:

- Exchange Rate: BRL:USD = 3.80:1
- Production Royalty: 2% (of Gross Proceeds)
- CFEM: 2% (of Gross Proceeds)
- Income Tax: 34%
- Depreciation: 14.29% (7 year straight line)