

GOLD MOUNTAIN

Critical minerals for the clean energy transition

Gold Mountain is pleased to release an investor presentation on the Down Under Rare Earths project. GMN Chief Geologists Peter Temby and Luziane Souza have released a video to accompany this presentation.

To view the full presentation, please visit:

<https://investorhub.goldmountainltd.com.au/link/2P25Gr>

We invite investors to submit their questions and feedback on the 'ask a question' section on this page.

GOLD MOUNTAIN

Critical minerals
for the clean
energy transition

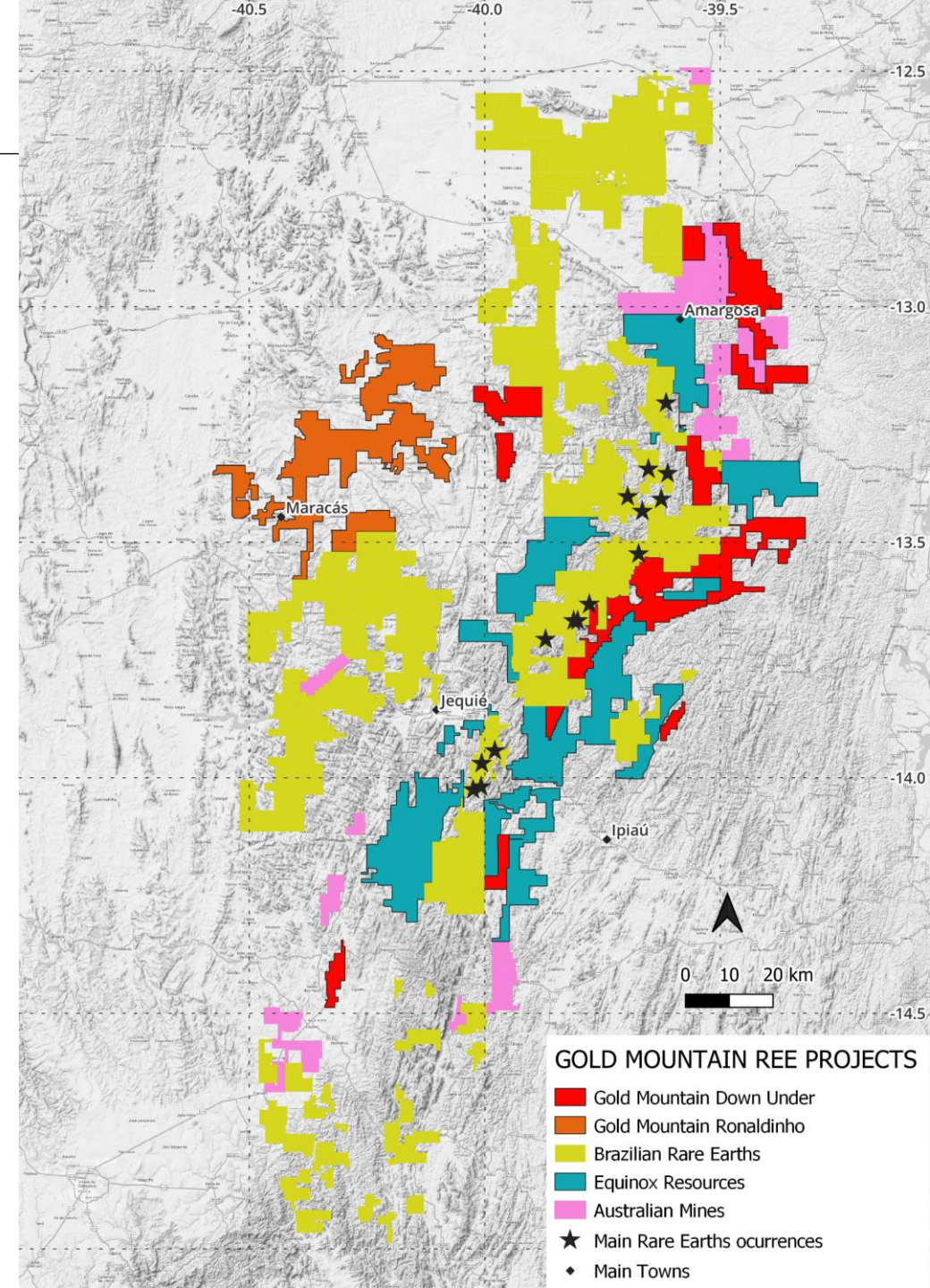
Important notice & disclaimer

- This presentation has been prepared by Gold Mountain Limited (“GMN”) for the sole purpose of providing general information on GMN (“Purpose”). This presentation is provided by GMN for information purposes only, without taking into account any potential investors’ personal objectives, financial situation or needs. It should not be relied upon by the recipient in considering the merits of any particular transaction. It is not an offer to buy or sell, or a solicitation to invest in or refrain from investing in, any securities or other investment product. Nothing in this presentation constitutes investment, legal, tax, accounting or other advice. The recipient should consider its own financial situation, objectives and needs, and conduct its own independent investigation and assessment of the contents of this presentation, including obtaining investment, legal, tax, accounting and such other advice as it considers necessary or appropriate.
- This presentation has been prepared on the basis of available information. It contains selected information and does not purport to be all-inclusive or to contain all of the information that may be relevant to the Purpose. The recipient acknowledges that circumstances may change and that this presentation may become outdated as a result. GMN is under no obligation to update or correct this presentation. GMN, its related bodies corporate and other affiliates, and their respective directors, employees, consultants and agents make no representation or warranty as to the accuracy, completeness, timeliness or reliability of the contents of this presentation. To the maximum extent permitted by law, no member of the GMN accepts any liability (including, without limitation, any liability arising from fault or negligence on the part of any of them) for any loss whatsoever arising from the use of this presentation or its contents or otherwise arising in connection with it.
- This presentation may contain forward-looking statements, forecasts, estimates and projections (“Forward Statements”). No independent third party has reviewed the reasonableness of any such statements or assumptions. No member of GMN represents or warrants that such Forward Statements will be achieved or will prove to be correct. Actual future results and operations could vary materially from the Forward Statements. Similarly, no representation or warranty is made that the assumptions on which the Forward Statements are based may be reasonable. No audit, review or verification has been undertaken by the GMN or an independent third party of the assumptions, data, results, calculations and forecasts presented or referred to in this presentation.
- The recipient acknowledges that neither it nor GMN intends that GMN act or be responsible as a fiduciary to the recipient, its management, stockholders, creditors or any other person. Each of the recipient and GMN, by accepting and providing this presentation respectively, expressly disclaims any fiduciary relationship and agrees that the recipient is responsible for making its own independent judgments with respect to any transaction and any other matters regarding this presentation.

Down Under REE Project

- AIM – to find a significant resource of IAC type REE mineralisation and also high grade hard rock mineralisation.
- LOCATION – adjacent to and along strike from BRE tenements with known significant resources of REE, base map Th/K.
- PRINCIPAL TARGETS – very high thorium anomalies, magnetic response, very high weathering index response, favourable geology and major structural corridor.

Sources - Maps: 1. BRE Prospectus; Ref 2. CPRM and ANM websites.

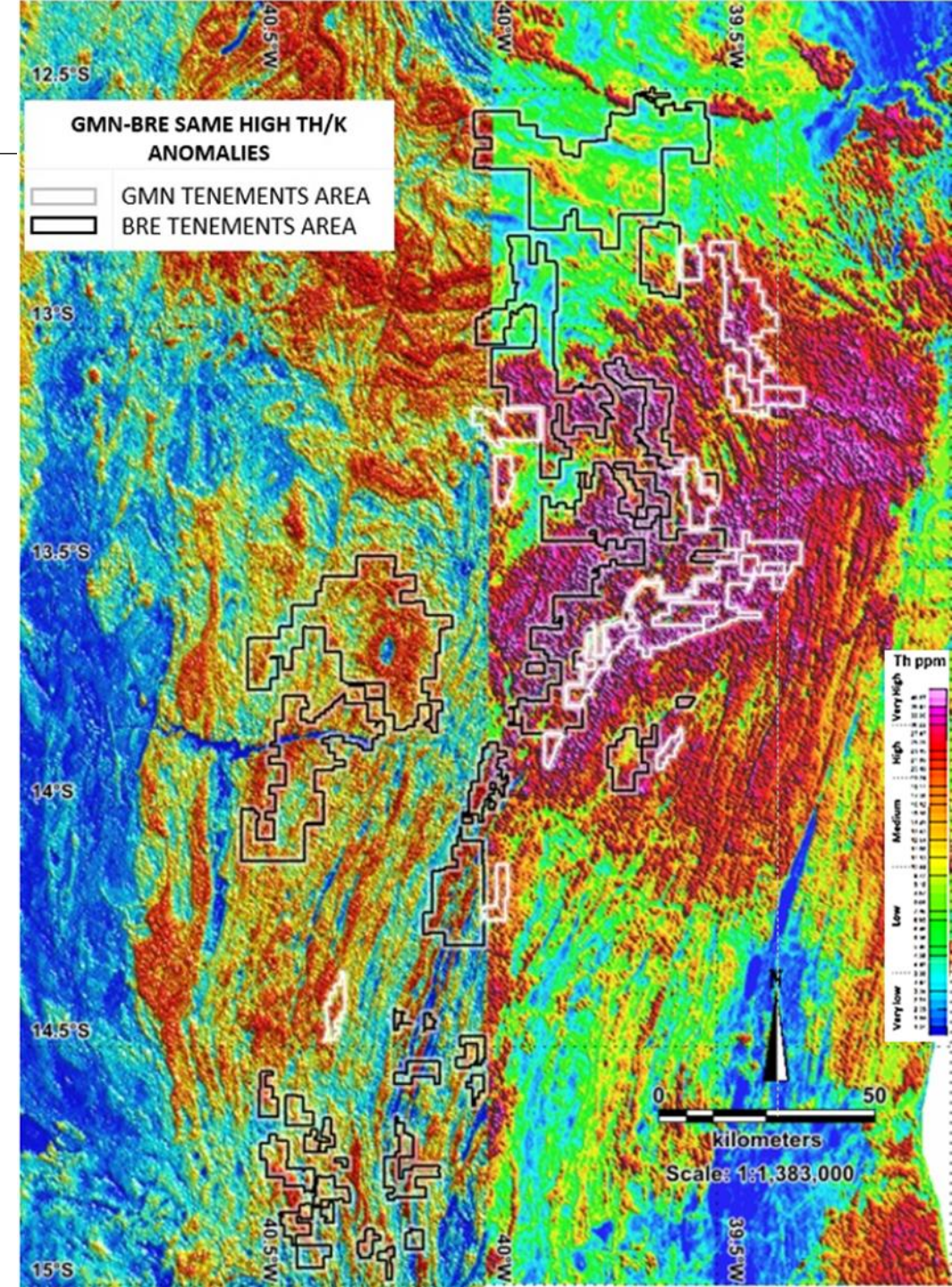


Down Under REE Project

EXPLORATION PLANNING

- Carry out detailed evaluation of theses, previous exploration and prospectus on the region.
- Define prospective areas based on all available data, not just on one company's success story.
- Detailed field planning on critical aspects for IAC (ionic adsorbed clay REE) and hard rock REE mineralisation

Sources - Maps: 1. BRE Prospectus; Ref 2. CPRM and ANM websites.



Down Under REE Project

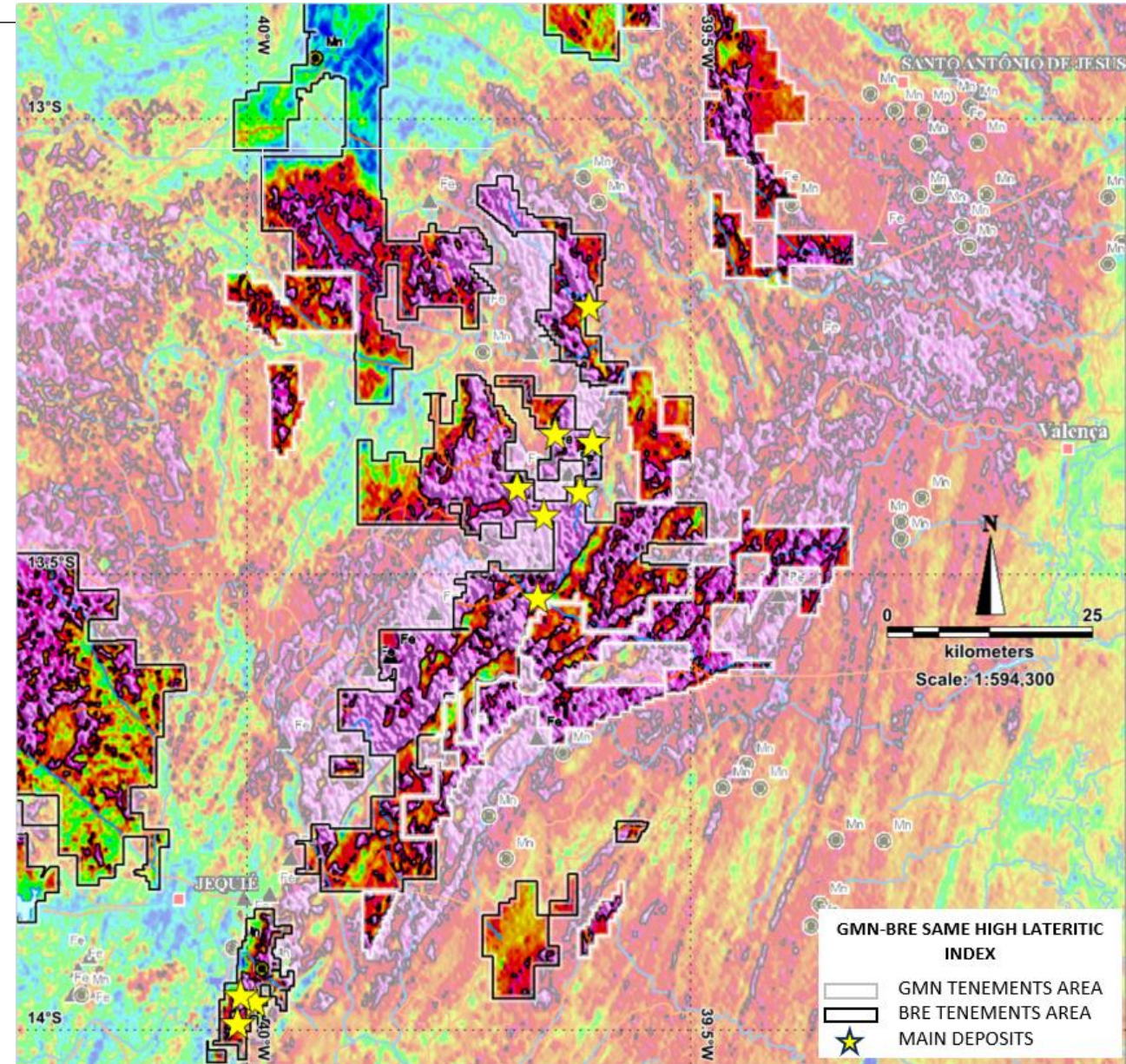
- SYSTEMATIC EXPLORATION PLANNING

Must have strong weathering and preserved weathering profiles.

We have carried out geomorphic mapping over the approximately 1100 km² of Down Under tenements and defined three separate surfaces

We are having spectral analysis of satellite imagery carried out to define the edges of laterite present, clays and IAC search areas within tenements.

Sources - Maps: 1. BRE Prospectus; Ref 2. CPRM and ANM websites.



Down Under REE Project

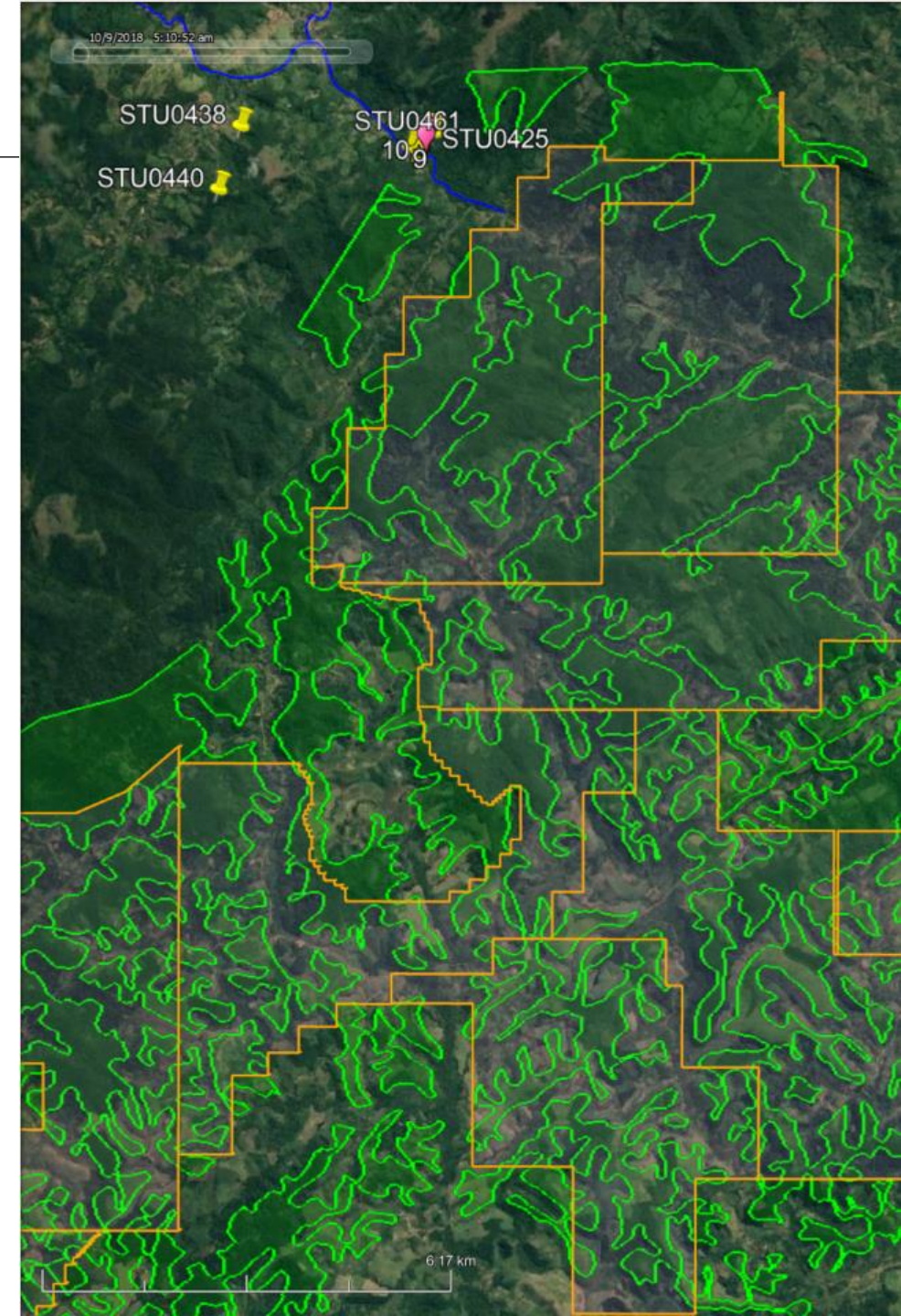
- EXPLORATION PLANNING

Must have strong weathering and preserved weathering profiles.

We have carried out geomorphic mapping over the approximately 1100 km² of GMN tenements and defined three separate surfaces of unknown type

The prospective surfaces will be determined in part by field observations and mainly by spectral analysis of satellite imagery to define laterite minerals.

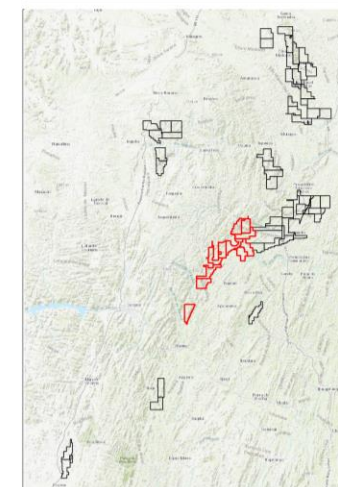
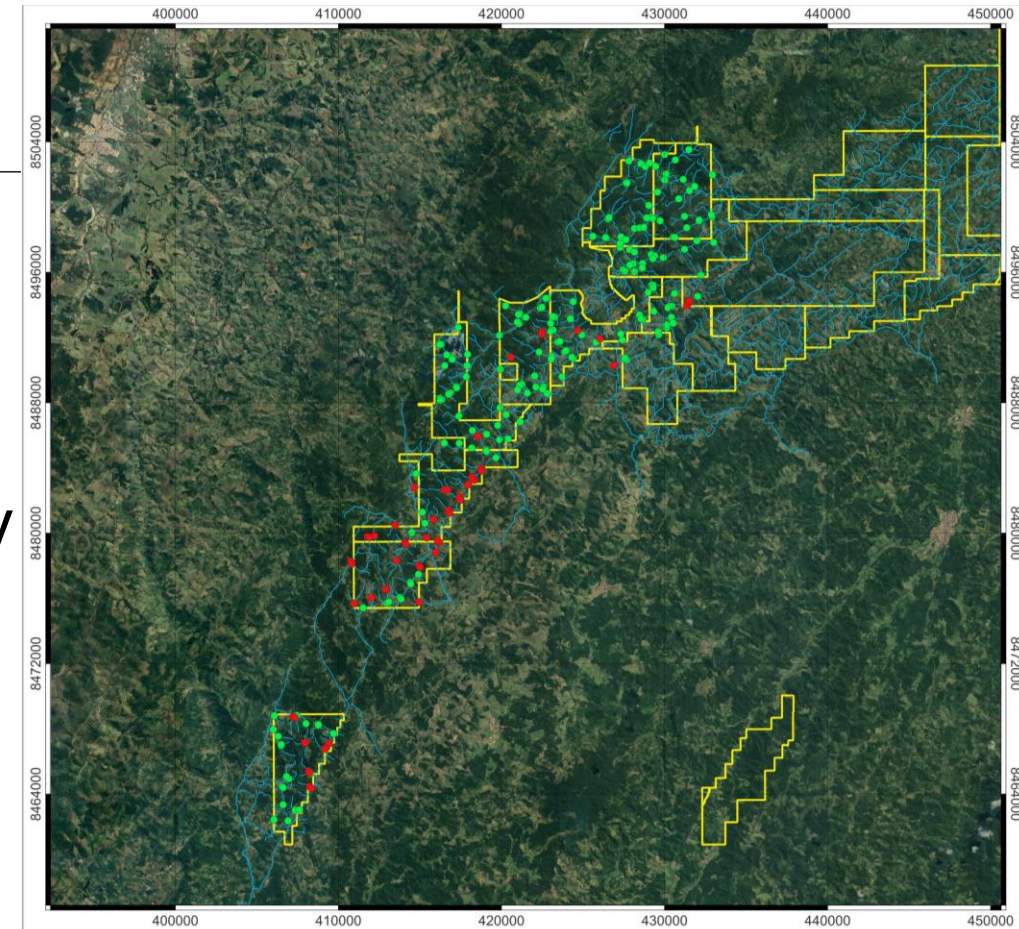
Radiometric surveys will be carried out over areas with anomalous REE to try and locate ultra high grade hard rock REE- Nb sources.



Down Under REE Project

EXPLORATION IN PROGRESS

- Sampling and mapping in progress under way
- Sampled points up to 12th of April, shown in green



Legend

- Down Under Project Tenements
- Drainage

Stream Sediment Sampling Status

- Scheduled
- Taken



DOWN UNDER PROJECT

STREAM SEDIMENT SAMPLING

FOLLOW UP

Rare Earth Elements
Company: Mars GMN Brazil Ltda / CNPJ: 49.071.642/0001-70
Region: Jequié - Bahia State



Coordinate System: UTM Sirgas 2000
Zone: 24S

Author

Bruno Campos Robine
Exploration Geologist

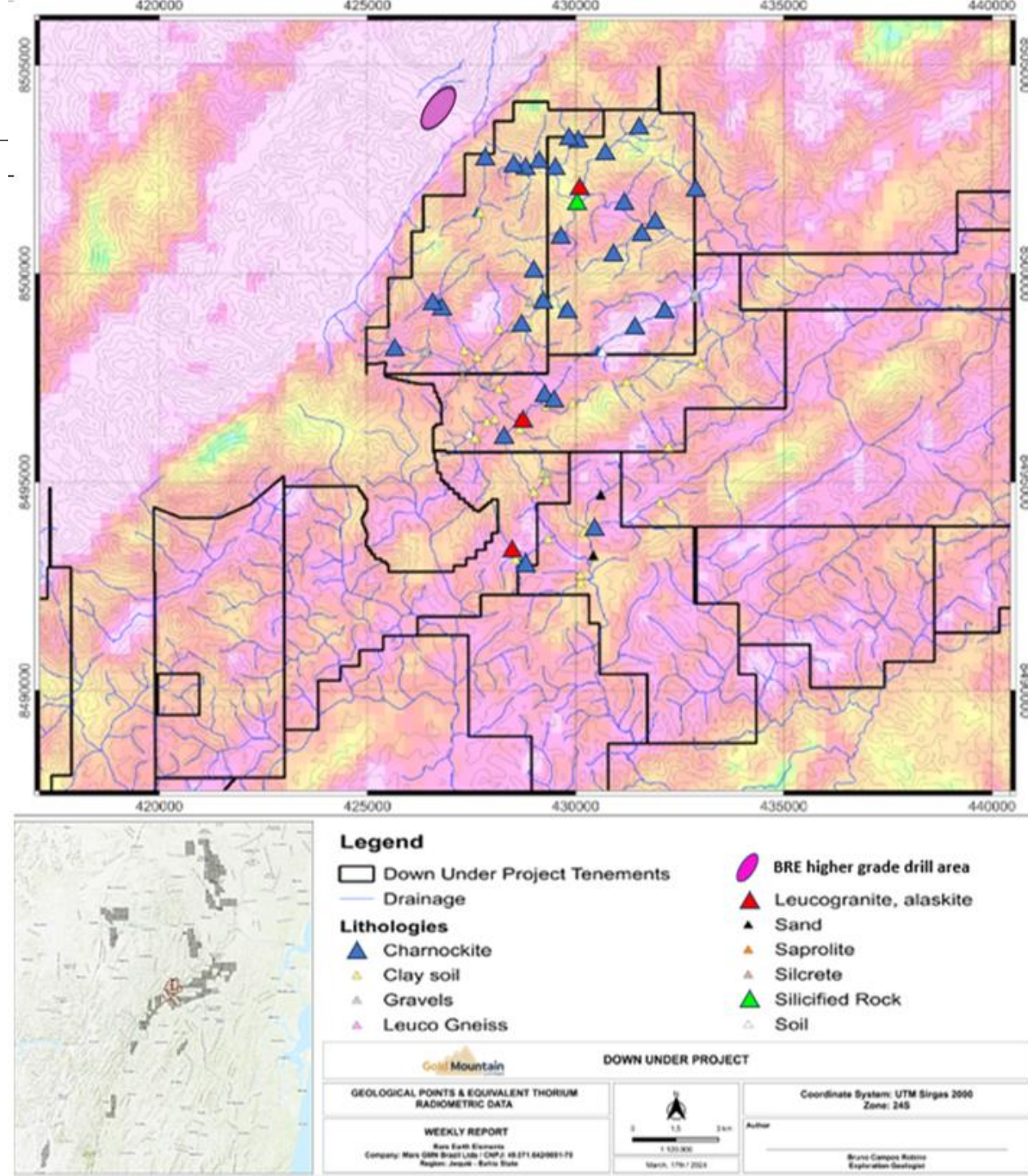
April, 11th / 2024

Down Under REE Project

EXPLORATION IN PROGRESS

Mapping of charnockites, leucogranites and silicified rocks.

BRE mineralisation reported in Prospectus lodged with ASX November 13, 2023.

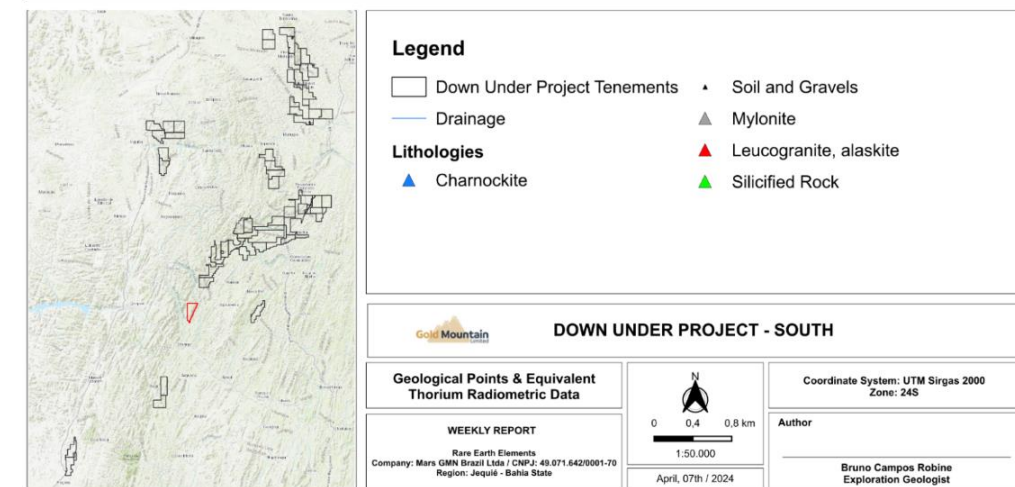
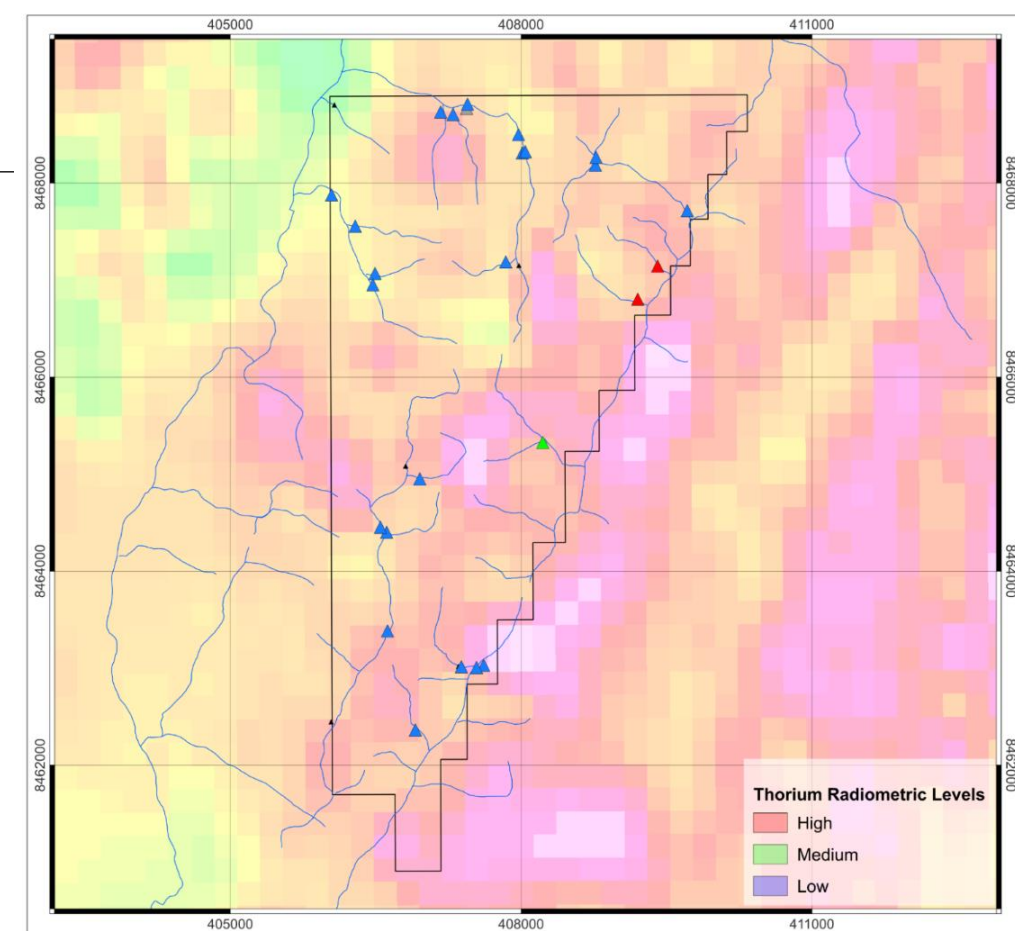


Sources - 1 BRE Prospectus

Down Under REE Project

EXPLORATION IN PROGRESS

- Mapping under way
- Charnockite major rock type
- Leucogranite/ alaskite identified
- Silicified rock types identified



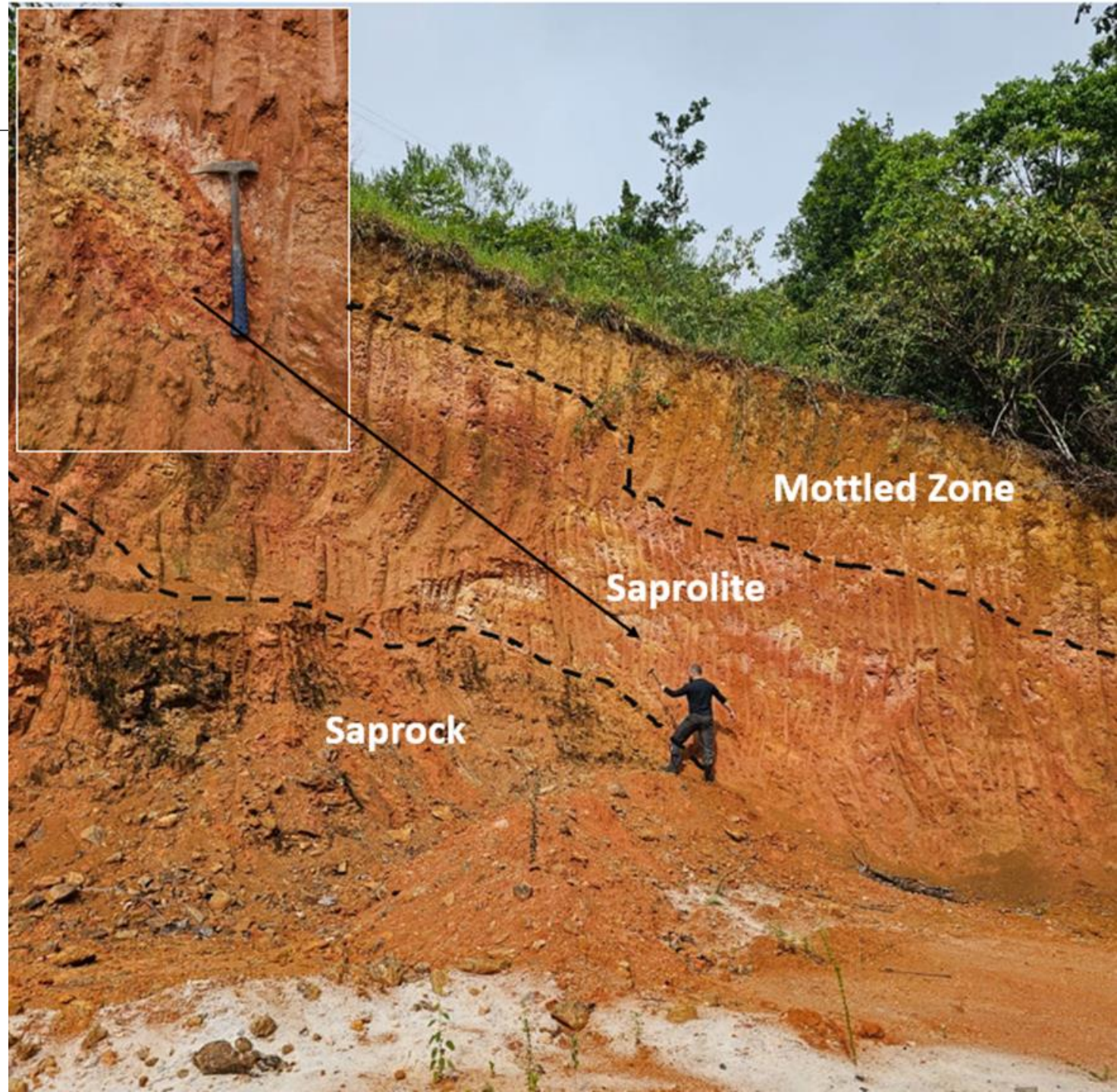
Down Under REE Project

- EXPLORATION IN PROGRESS

Weathered profile showing the mottled, saprolite and saprock zones.

Channel sampling of each zone was undertaken.

The inset shows a probable core stone, it is unknown whether it is mineralised until results are received.



Down Under REE Project

EXPLORATION IN PROGRESS

- Gold Mountain Limited is sampling and mapping Down Under to detail and same rocks as mapped in nearby deposits are being found in our ground.



Down Under REE Project

EXPLORATION IN PROGRESS

- Sheared and silicified charnockites in EL 872237/2023
- In this area, the predominant rocks are charnockites.
- Mylonite boulders mapped which are favourable for REE mineralization in the region
- Shearing, hydrothermal alteration and quartz vein zones are associated with high REE contents in the region



Mylonite

Down Under REE Project

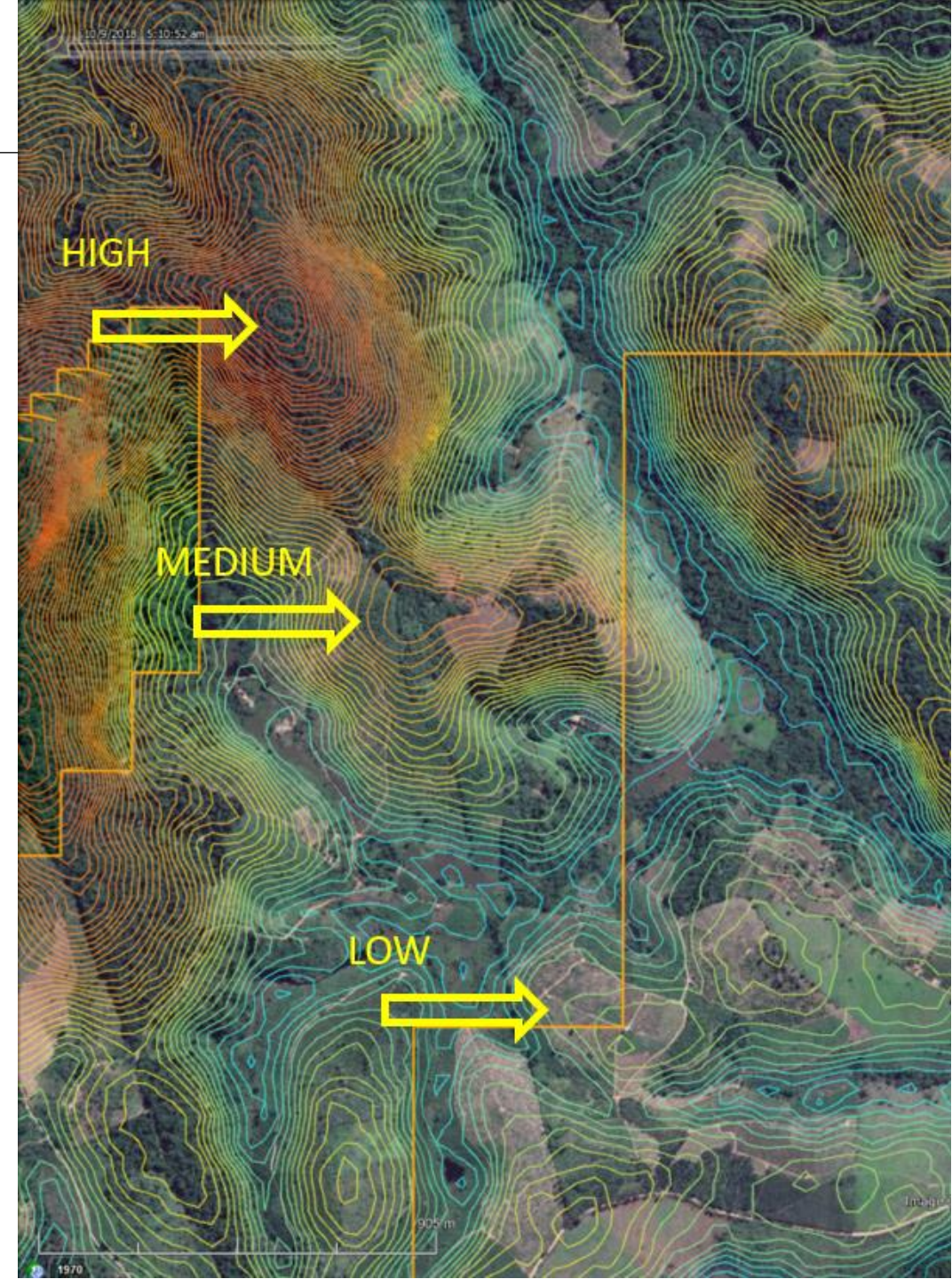
EXPLORATION PLANNING

Three separate weathering surfaces defined.

The surfaces are draped, or wavy in profile, so tracing the same horizon is not always straight forward.

The contoured image shows three surfaces, a high elevation, a medium elevation and a low elevation surface.

Satellite analysis will define the IAC target surfaces.



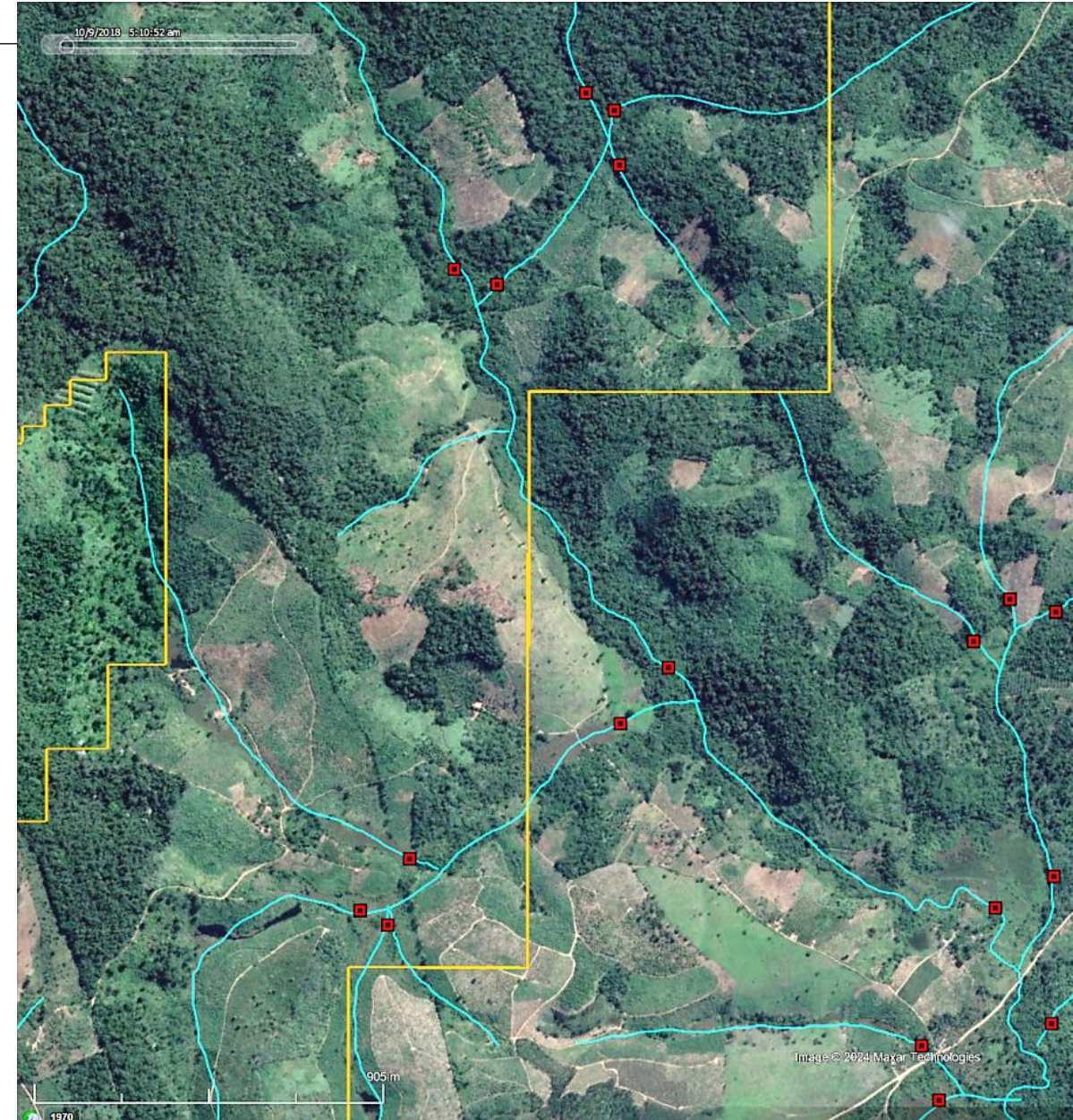
Sources – 3. Google Earth; 4. SRTM

Down Under REE Project

EXPLORATION PLANNING

Stream sediment sampling for IAC deposits are being carried out on the ground using GMN's proprietary sample collection and preparation methods.

REE in IAC is adsorbed and or complexed with clay and similar minerals as well as on some iron oxides so is very amenable to detection in stream sediment samples with the appropriate sampling.



Sources – 3. Google Earth;

Down Under REE Project

SYSTEMATIC EXPLORATION PLANNING

- Two sampling teams deployed on 4th March, third team operational in early April after training on sampling techniques.
- 3-4 months sampling with three good teams to complete the regional sampling assuming no areas deleted by satellite spectral analysis.
- Ground radiometric traversing will be ongoing throughout the year for ranking target areas and trying to find ultrahigh grade REE deposits.
- First results anticipated in late May.
- Reconnaissance auger sampling in anomalous catchments can commence in June.
- Broad spaced resource style drilling is anticipated Q4 calendar 2024 with RC or sonic drilling. This is subject to drill permits timing.

Down Under REE Project

References

1. Brazilian Rare Earths Prospectus dated 13 November 2023. Brazilian Rare Earths Limited
2. Brazil Geological Survey (CPRM) website <https://geosgb.sgb.gov.br/> and the Brazil National Mining Agency (ANM) website <https://geo.anm.gov.br/portal/apps/webappviewer/index.html?id=6a8f5ccc4b6a4c2bba79759aa952d908>
3. Google Earth, <https://earth.google.com/intl/earth/download/ge/agree.html>
4. SRTM, <https://www.earthdata.nasa.gov/sensors/srtm#:~:text=The Shuttle Radar Topography Mission,global dataset of land elevations.>

Any additional interpretations or markings on maps has been provided by suitably qualified GMN Team members.

Where a Competent Person has previously issued the written consent to the inclusion of their findings in a report, a company re-issuing that information to the Public whether in the form of a presentation or a subsequent announcement must, state the report name, date and reference the location of the original source Public Report for public access. The information is extracted from the following announcements:

GMN ASX Release 1 December 2023 Massive Prospective Brazil REE tenement applications.

GMN ASX Release 11 December 2023 Investor Presentation REE

GMN ASX Release 2 February 2024 Down Under Rare Earths Project Update

GMN ASX Release 15 February 2024 Exploration commences on Clay Hosted REE tenements

GMN ASX Release 21 March 2024 GMN identifies rocks prospective for high grade REE

Down Under REE Project

All announcements are available to view on www.goldmountainltd.com.au. The company confirms that it is not aware of any new information or data that materially affects the information included in the original market announcement and, in the case of estimates of Mineral Resources or Ore Reserves, that all material assumptions and technical parameters underpinning the estimates in the relevant market announcement continue to apply and have not materially changed. The company confirms that the form and context in which the Competent Person's findings are presented have not been materially modified from the original market announcement.