

ASX ANNOUNCEMENT

22 JULY 2024



HIGH GRADE GOLD AND WIDE ZONE INTERSECTIONS WITHIN THE VICTORY VEIN AT THE ALOE REK PROSPECT

Far East Gold Limited (FEG or the Company) is pleased to announce further assay results for diamond drill holes 2 to 9 from the Company's recently completed 12 hole (1,884m) maiden scout drilling program at the Woyla Copper Gold Project's Aloe Rek prospect area, with **ARD-009 returning one of the project's best cumulative gold metre intercepts to date.**

HIGHLIGHTS:

ARD-009

- **20m @ 7.57 g/t Au, 8.5 g/t Ag (7.67 g/t AuEq)** from 67.5m to 87.5m, *including*:
 - **11m @ 13.45 g/t Au, 13.68 g/t Ag (13.61 g/t AuEq)** from 70.5m to 79m and,
 - **3.3m @ 31.64 g/t Au, 26.8 g/t Ag (31.96 g/t AuEq)** from 75.8m to 79m

ARD-003

- **3.4m @ 6.68 g/t Au, 7.81 g/t Ag (6.77 g/t AuEq)** from 68.5m to 71.9m, *including*:
 - **0.7m @ 30.05 g/t Au, 21.9 g/t Ag (30.31 g/t AuEq)** from 70.2m to 70.9m
- **0.8m @ 3.58 g/t Au, 8.85 g/t Ag (3.69 g/t AuEq)** from 123m - 123.8m, *including*:
 - **0.4m @ 6.79 g/t Au, 10.9 g/t Ag (6.92 g/t AuEq)** from 123m – 123.4m

ARD-007

- **18.5m @ 1.38 g/t Au, 3.84 g/t Ag (1.43 g/t AuEq)** from 17.9m to 36.4m, *including*:
 - **2.4m @ 3.41 g/t Au, 1.35 g/t Ag (3.43 g/t AuEq)** from 18.9m to 21.3m and
 - **1.4m @ 4.89 g/t Au, 10.67 g/t Ag (5.02 g/t AuEq)** from 35m to 36.4m

- Deposit remains **open at depth and along strike** to the South.
- Grab samples taken from exposed vein about **600m** to the **south** of the drilled holes along strike of the Victory vein returned assays of **15.6 g/t Au** and **25.8 g/t Ag** indicating the possibility for further high grade gold extensions to the South.
- CEO Shane Menere will be joined by Non-Executive Chairman Justin Werner for an online Q&A session tomorrow, Tuesday 23rd July 12.00pm AEST. Book your spot: <https://fareastgold.investorportal.com.au/investor-briefing/>

Holes 2 to 9 continue to build on the **thick high grade gold** intercepted in the first drill hole ARD-001 (ASX release 8 April 2024) which returned:

ARD-001

- **5.0m @ 2.36 g/t Au, 10 g/t Ag (2.48 g/t AuEq)** from 46m to 51m; *including*:
 - **0.5m @ 15.91 g/t Au, 69 g/t Ag (16.74 g/t AuEq)** from 47m to 47.5m
- **12.4m @ 5.59 g/t Au, 25.3 g/t Ag (5.89 g/t AuEq)** from 82.3m to 94.7m; *including*:
 - **9.7m @ 7.06 g/t Au, 31.67 g/t Ag (7.44 g/t AuEq)** from 85m to 94.7m and
 - **4m @ 11.83 g/t Au, 33.56 g/t Ag (12.23 g/t AuEq)** from 85.5m to 89.5m
- **0.8m @ 3.58 g/t Au, 8.85 g/t Ag (3.69 g/t AuEq)** from 123m to 123.8m; *including*:
 - **4m @ 6.79 g/t Au, 10.9 g/t Ag (6.92 g/t AuEq)** from 123m to 123.4m



CEO Shane Menere commented:

“Woyla continues to reveal more of why it was historically considered one of the best undrilled prospects in SE Asia. FEG was first to drill and develop the project, and it certainly has not disappointed. These latest high-grade results combined with sizeable meterage at the drill tip, confirm what Barrick suspected when it targeted Aloe Rek as its top ranked prospect area. This is exciting times for FEG as it hits its targets and unlocks value in its portfolio of world class gold and copper assets.”

The Company has completed its initial scout drilling program at the Aloe Rek vein systems with 12 holes completed for a total of 1,884m (Table 1, Figure 2). Assays have been received for holes ARD-001 to 009 and compiled significant assays for these holes are provided in Appendix 1. The current drill program is testing the Victory vein system with 50 and 100m spaced drill holes over a strike length of 500m and to a vertical depth of approximately 250m.

Please click on the link below to the Company Investor Portal and watch the video with CEO Shane Menere sharing some insights into the occurrences of high-grade gold within the Victory Vein in Aloe Rek. <https://fareastgold.investorportal.com.au/far-east-gold-aloe-rek-delivers-high-grade-assays/>

Q&A Session

Far East Gold's CEO Shane Menere will be joined by Non-Executive Chairman Justin Werner for an online Q&A session tomorrow, Tuesday 23rd July 12.00pm AEST. Book your spot or request a replay here: <https://fareastgold.investorportal.com.au/investor-briefing/>



The Aloe Rek prospect area is located approximately 1.5km south of the Aloe Eumpeuk prospect area where high-grade Au-Ag was intersected during an initial 30 hole scout drill program completed in August 2023 (Figure 1). Refer to ASX release dated 18 May 2023 and 7 March 2024.

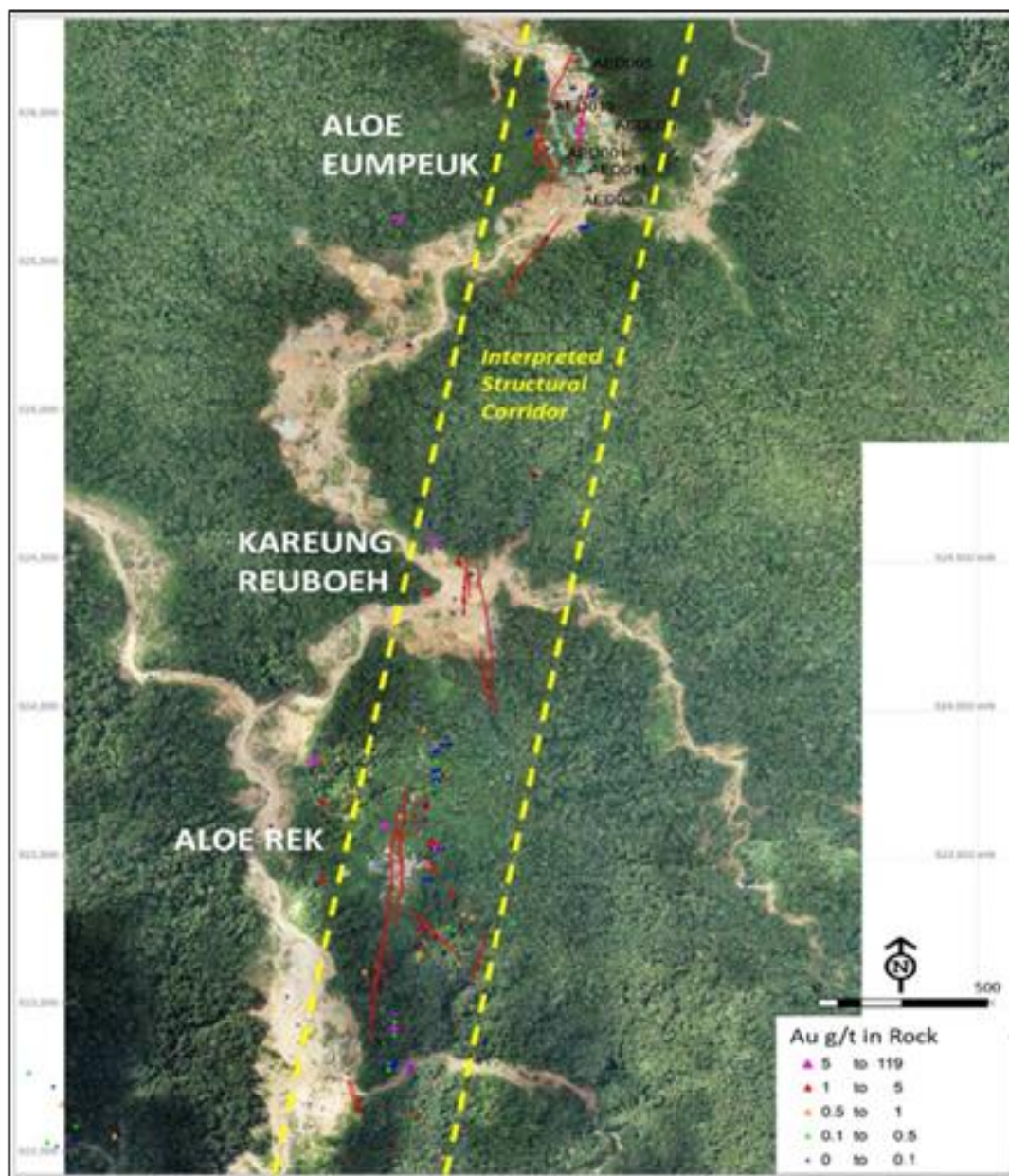


Figure 1: Plan map showing the interpreted extent and orientation of quartz veins within the interpreted structural corridor extending south from the Aloe Eumpeuk prospect area to Aloe Rek. Refer to ASX release of 26 May 2023 for additional sample assay information. Coordinate datum is WGS84 Zone 47N. .



Hole_ID	Easting	Northing	RL	Azimuth	Inclination	Depth m
ARD001	185371	523447	848	271	53	171
ARD002	185371	523447	848	271	77	259
ARD003	185341	523556	866	270	75	152
ARD004	185368	523648	881	270	66	191
ARD005	185343	523350	818	270	45	96
ARD006	185272	523259	823	92	55	114
ARD007	185272	523259	823	94	73	151
ARD008	185218	523504	822	90	63	279
ARD009	185269	523495	843	89	46	119
ARD010	185269	523495	845	89	61	177
ARD011	185270	523396	817	91	45	111
ARD011R	185270	523396	817	91	46	65

Table 1: Details of ARD drillholes completed to date. Coordinate datum is UTM WGS 84 – Zone 47N. Assays are pending for holes ARD010-11R. ARD011R was a 65m redrill of hole 011 to improve core recovery.

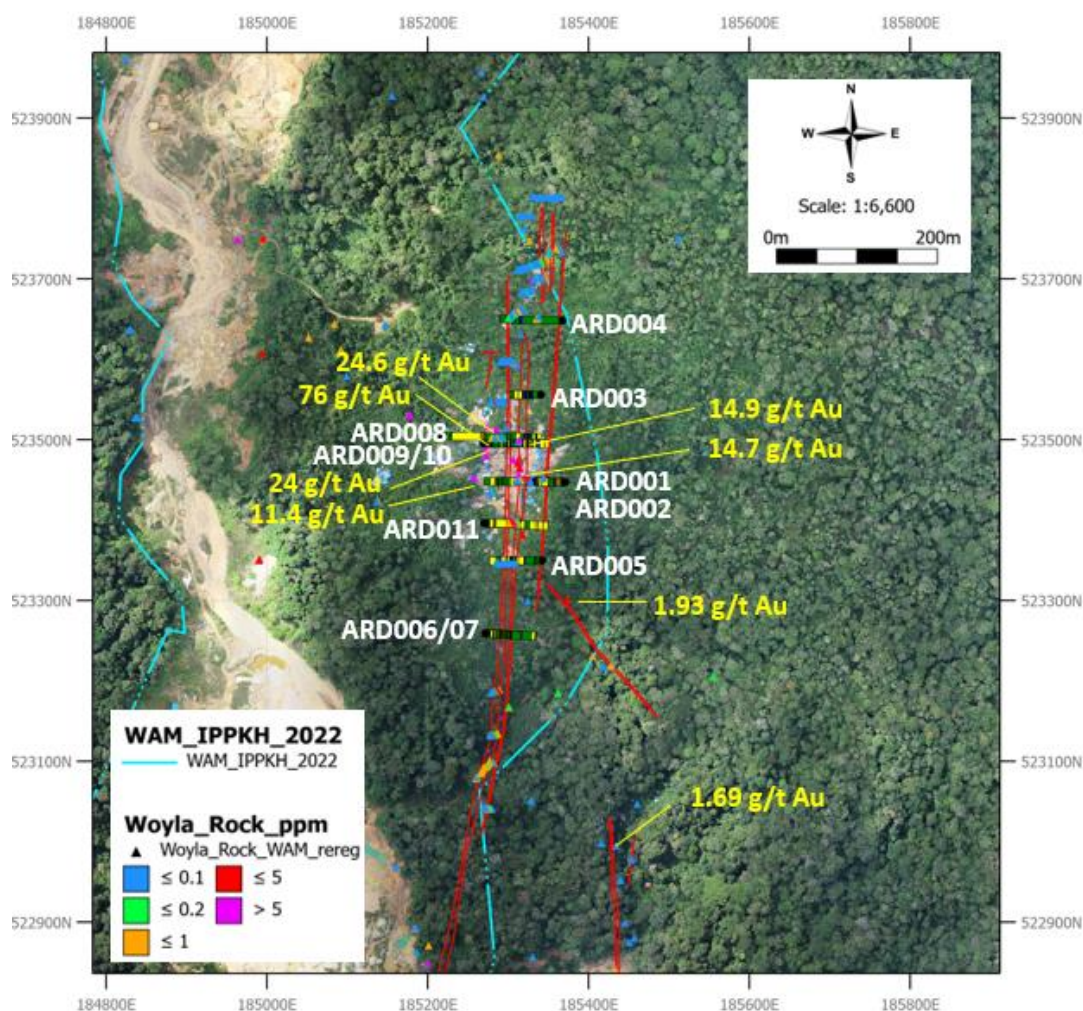


Figure 2: Satellite image of the Aloe Rek prospect area showing the location of completed holes. Au assays from grab samples of quartz vein collected at surface are also indicated. Refer to ASX release of 7 March 2024 for sample details. Refer to Figure 3 for a cross section of ARD-009.

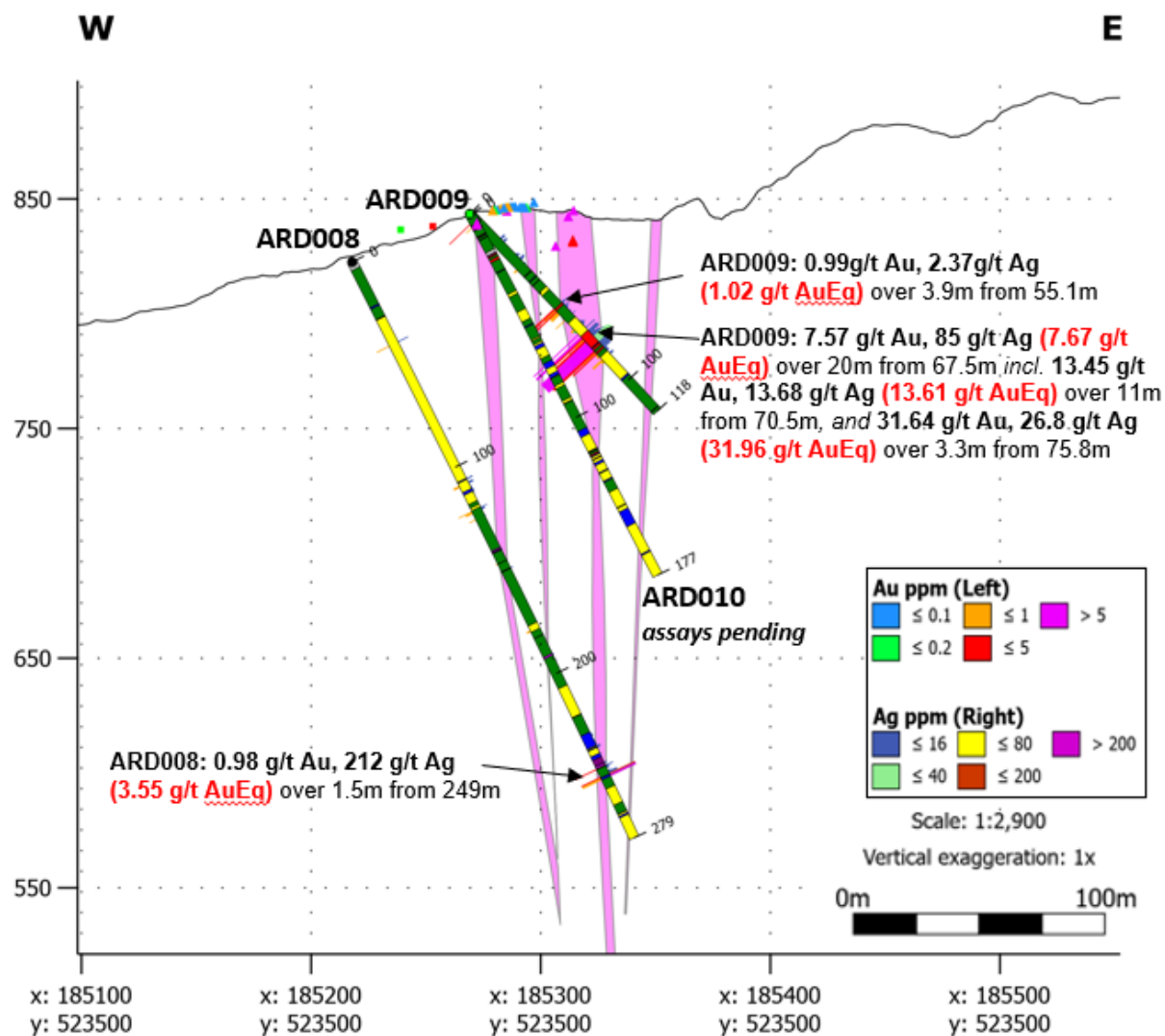


Figure 3: Cross section of hole ARD008,009,0101 looking North. Refer to Figure 2 and Table 1. A list of compiled significant assay intersections is provided in Appendix 1. Assays for hole ARD010 are pending.

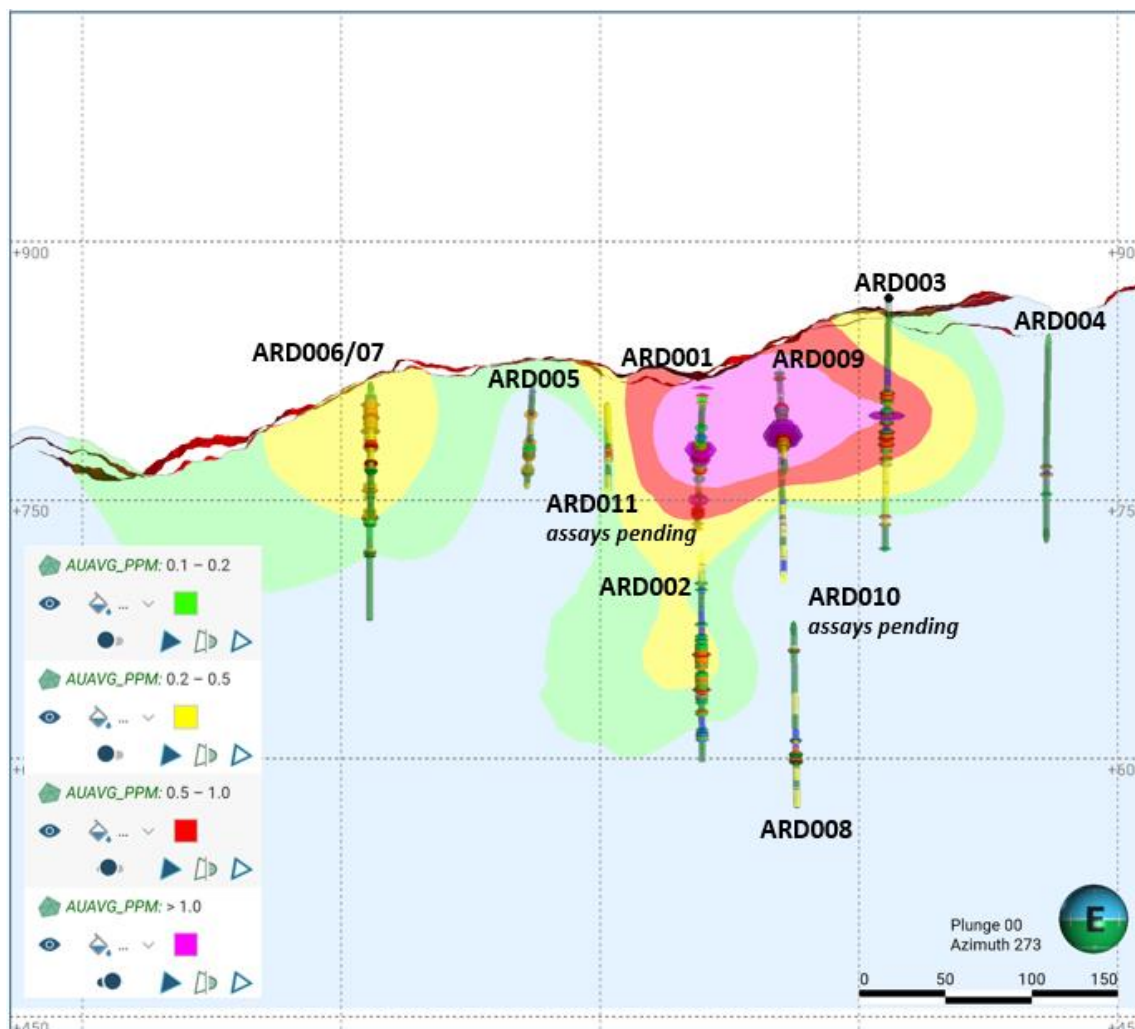


Figure 4: A long section, looking to west along the length of the drilled area of the Aloe Rek prospect. The figure shows Au g/t assay contours within the drilled area. The high-grade Au zone intersected in holes ARD001 and 009 suggests a zone that extends over a lateral distance of about 150m within the plane of the vein. The control to the high-grade mineralisation maybe due to fluid boiling within a locally dilated part of the host vein. Alternatively the occurrence of quartz vein oriented oblique to the main vein trend may reflect a secondary structural feature that may have been important to the emplacement of high-grade mineralisation. See Figure 6. A list of compiled significant assay intersections is provided in Appendix 1. Assays for hole ARD010 and 011/11R are pending.



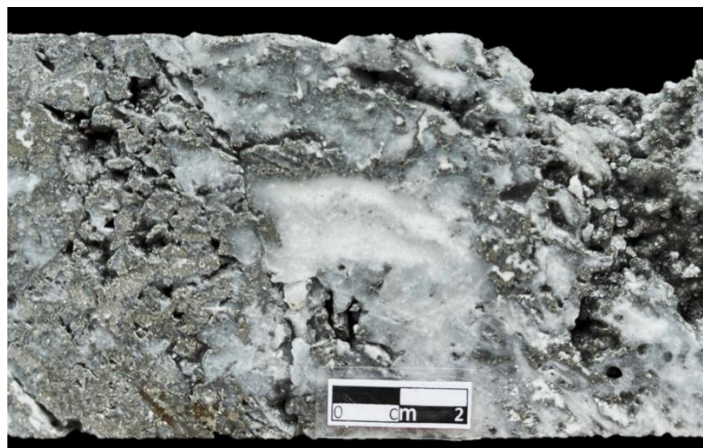
Hole	Prospect	From	To	Interval (M)	Au g/t	Ag g/t	AuEq
ARD009	Aloe Rek	3.2	3.6	0.4	1.63	1.20	1.64
		4.8	5.2	0.4	0.54	0.50	0.55
		31.6	32.4	0.8	0.28	1.40	0.30
		55.1	59.0	3.9	0.99	2.37	1.02
		62.0	62.4	0.4	0.61	2.50	0.64
		67.5	87.5	20.0	7.57	8.50	7.67
	<i>including</i>	70.5	81.5	11.0	13.45	13.68	13.61
	<i>and</i>	75.8	79.0	3.3	31.64	26.80	31.96

Table 2: Summary of compiled significant assay results for drillhole ARD009. Intersection intervals are reported in meters and zone widths are reported as intersected downhole. Refer to Figure 2 and Table 1 for hole locations. Significant intersections were compiled using 0.2g/t Au cut-off with no more than 1m of consecutive internal dilution (below-cut off) included. No top cut of gold assays has been applied. Au Equivalent (AuEq) is based on USD\$1,800/oz gold and USD\$22/oz silver (Au g/t +(Ag g/t *0.012)). See Appendix 1 for a list of compiled significant intersections for holes ARD001-008.

The high grade Au mineralisation intersected in ARD-009 is also associated with high concentrations of arsenic (As) and antimony (Sb) with assays of up to 9.8% As and 0.24% Sb (Table 3). This association supports the interpretation that the level of exposure of the Aloe Rek vein system reflects a high level of formation within Woyla's epithermal system. The high-grade intersection intersected in ARD-009 is hosted within quartz that has a well developed bladed-texture which is also consistent with formation in the higher levels of the vein system (Figure 5).

Hole ID	From (m)	To (m)	Interval (m)	Au-g/t	Ag-g/t	AuEq-g/t	As ppm	Sb ppm	Ba ppm	Cu ppm	Pb ppm	Zn ppm
ARD009	70.5	71.0	0.5	12.49	9.70	12.61	38,300	674	10	37	18	56
ARD009	71.0	72.1	1.1	0.08	0.25	0.08	1,261	49	13	5	9	33
ARD009	72.1	73.1	1.0	6.16	9.10	6.27	8,850	244	22	59	19	76
ARD009	73.1	73.8	0.7	2.28	9.80	2.40	6,665	180	16	50	47	91
ARD009	73.8	74.4	0.6	0.57	3.40	0.61	3,270	102	12	120	48	95
ARD009	74.4	75.4	1.0	2.27	6.60	2.35	5,857	131	31	169	243	488
ARD009	75.4	75.8	0.3	17.01	12.60	17.16	47,500	779	8	68	67	149
ARD009	75.8	76.4	0.7	23.34	19.60	23.58	65,400	1,400	5	246	142	185
ARD009	76.4	77.4	1.0	35.51	28.00	35.85	91,400	2,000	5	191	111	122
ARD009	77.4	78.4	1.0	38.16	32.80	38.55	98,600	2,400	6	150	85	142
ARD009	78.4	79.0	0.6	23.29	22.60	23.56	53,300	938	7	199	132	245
ARD009	79.0	79.9	0.9	10.28	14.00	10.45	26,200	544	10	147	123	207
ARD009	79.9	80.5	0.6	14.95	15.50	15.14	37,600	832	7	156	94	207
ARD009	80.5	81.5	1.0	4.25	7.30	4.34	8,076	400	8	52	39	76

Table 3: Individual drill core assays from ARD009 for the compiled significant intersection between 70.5m-81.5m. Refer to Table 2 above. The assays show strong association of Au g/t with significant As and Sb consistent with the interpretation that the Aloe Rek vein exposures reflect a high level of formation within a low sulphidation type epithermal vein system.



ARD009 (77.65m); Arsenopyrite-rich (9.8%) quartz vein that is within a 1m sample intervals that assayed 38.16 g/t Au and 32.8 g/t Ag (77.4-78.4m)



ARD009 (80.1m); core specimen of bladed vuggy, quartz vein. From within a 0.6m interval that assayed 14.95 g/t Au and 15.5 g/t Ag (79.9-80.5m)

Figure 5: Samples of drill core from ARD-009 at Aloe Rek.

Similar to the other Woyla vein zones mapped and drill tested, the Victory zone veins were emplaced into active fault systems that were reactivated during vein emplacement producing multistage quartz veins, quartz breccia and milled, quartz clast breccias and fault breccias which can contain significant sulphides (arsenopyrite/pyrite) in the breccia matrix (Figure 5).

As shown on Figure 6 it is also apparent that quartz veins are also oriented oblique to the main north-south vein trend. This indicates secondary structures were important as a control during some period of vein emplacement. It may also be the case that such features were also important in focusing gold-rich fluids during vein development and may account for the occurrence of what appear to be isolated pods or lenses of high-grade mineralisation such as intersected in ARD-009 and ARD001 (Figure 4). As such, the trend of the high grade mineralisation may be oblique to the north-south trend of the Victory vein and instead be focused within a secondary structure oblique to it as shown on Figure 6. This premise will be tested by the Company in future drilling.

At the same time, it is also apparent that there is potential for high grade gold mineralisation within the Victory vein system south of the area drilled. This is indicated by a recent grab sample collected along strike of the Victory vein which assayed **15.6 g/t Au and 25.8 g/t Ag** (Figure 6). The sample was taken from exposed vein about 600m to the south of the drilled holes suggesting that further scout drilling to the south is warranted (Figure 6). Refer to ASX release of 7 March 2024 for additional historical details of the Victory vein system. The Company will continue detailed mapping and surface rock sampling to define drill targets to drill test.

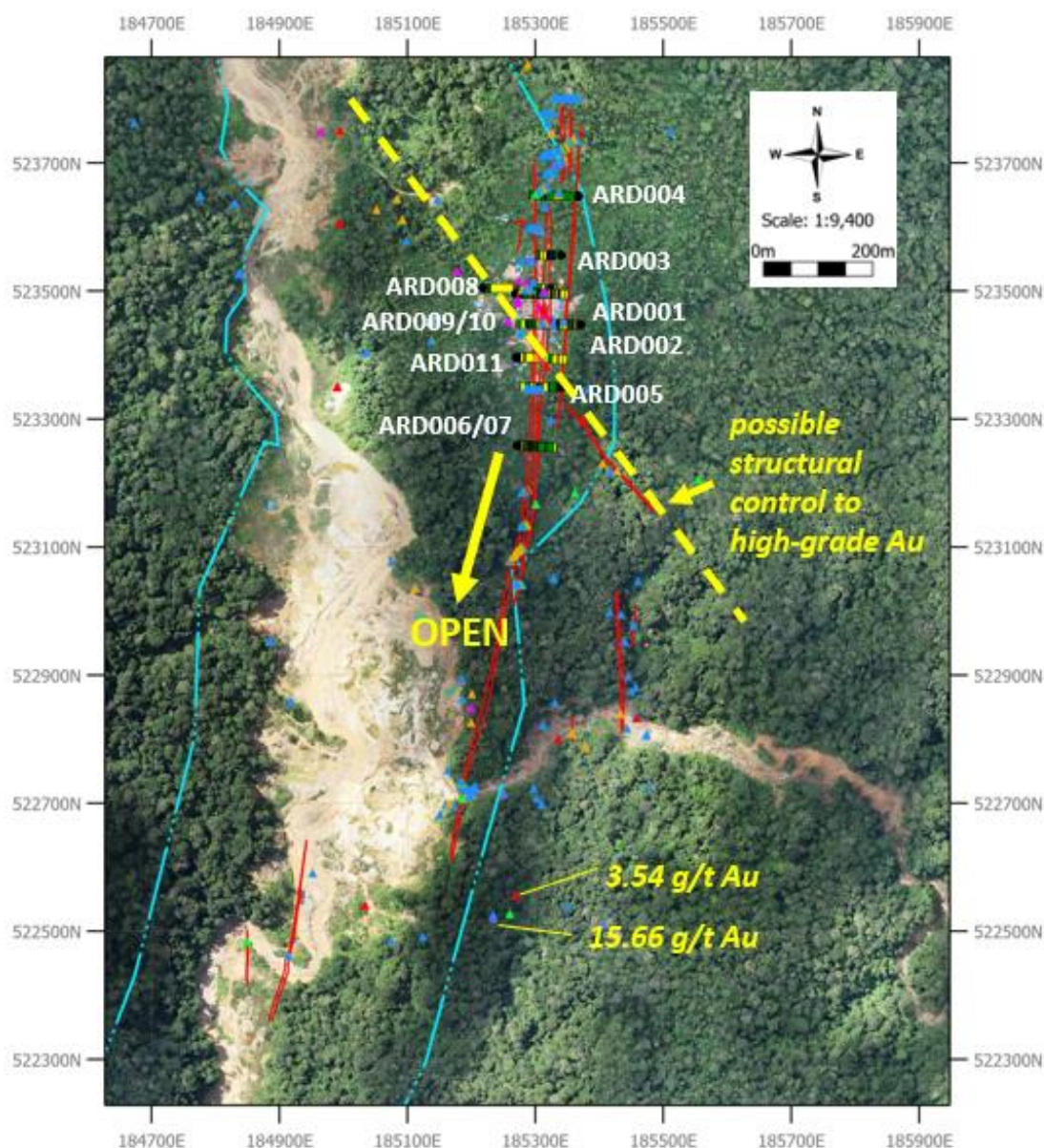


Figure 6: Satellite image of the Aloe Rek prospect area showing the location of completed ARD holes. Au g/t assays (yellow) from grab samples of quartz vein collected south of the current area of drill are also shown. Refer to ASX release of 7 March 2024 for sample details. The potential for additional zones of high-grade mineralisation within the Victory vein zone remains open along strike to the south. The potential for high-grade gold mineralisation also controlled by structural features oblique to the main vein trend will also be assessed by targeted drilling.



COMPETENT PERSON'S STATEMENT

The information in this report that relates to Exploration Results and Mineral Resources is based on information compiled by FEG staff and approved by Michael C Corey, who is a Member of the Association of Professional Geoscientists of Ontario, Canada. Michael Corey is employed by the Company and has sufficient experience which is relevant to the style of mineralisation and type of deposit under consideration and to the activity which he is undertaking to qualify as a Competent Person as defined in the 2012 Edition of the 'Australasian Code for Reporting of Exploration Results, Mineral Resources and Ore Reserves'. Michael Corey has consented to the inclusion in this report of the matters based on his information in the form and context in which they appear.

Q&A Session

Far East Gold's CEO Shane Menere will be joined by Non-Executive Chairman Justin Werner for an online Q&A session tomorrow, Tuesday 23rd July 12.00pm AEST. Book your spot or request a replay here: <https://fareastgold.investorportal.com.au/investor-briefing/>

ABOUT FAR EAST GOLD

Far East Gold Limited (ASX: FEG) is an ASX listed copper/gold exploration company with six advanced projects in Australia and Indonesia.

The Company's Woyla Copper Gold Project is a 24,260 ha 6th generation Contract of Work located in the Aceh region of North Sumatra, Indonesia. In the Company's opinion this project was one of the most highly prospective undrilled copper gold projects in South-East Asia with the potential to host high grade epithermal and porphyry deposits. FEG holds a 51% interest in the project that will increase to 80% upon the Company's completion of a feasibility study and definition of a maiden JORC resource estimate for the project.

Release approved by the company's board of directors.

FURTHER INFORMATION:

To receive company updates and investor information from Far East Gold, register your details on the investor portal: <https://fareastgold.investorportal.com.au/register/>

COMPANY ENQUIRIES

Justin Werner
Chairman
e:justin.werner@fareast.gold

Shane Menere
Chief Executive Officer
e:shane.menere@fareast.gold
m: + 61 406 189 672
+ 62 811 860 8378

Tim Young
Investor Relations & Capital Markets
e:tim.young@fareast.gold
m: + 61 484 247 771

MEDIA ENQUIRIES

Reach Markets
[e: IR@reachmarkets.com.au](mailto:e:IR@reachmarkets.com.au)
P: 1300805795



APPENDIX 1

Compiled Significant Intersections

Hole	Prospect	From	To	Interval (M)	Au g/t	Ag g/t	AuEq
ARD001	Aloe Rek	15.0	16.0	1.0	0.27	4.40	0.32
		46.0	51.0	5.0	2.36	10.06	2.48
	<i>including</i>	47.0	47.5	0.5	15.91	69.00	16.74
		54.0	54.5	0.5	0.34	1.20	0.35
		82.3	94.7	12.4	5.59	25.30	5.89
	<i>including</i>	85.0	94.7	9.7	7.06	31.67	7.44
	<i>and</i>	85.5	89.5	4.0	11.83	33.56	12.23
		98.5	102.8	4.3	0.61	2.82	0.64
		123.0	123.8	0.8	3.58	8.85	3.69
	<i>including</i>	123.0	123.4	0.4	6.79	10.90	6.92
		130.1	130.6	0.5	1.07	2.80	1.11
		132.7	134.5	1.8	0.69	5.19	0.76
		139.4	139.8	0.5	0.71	8.70	0.81
		141.8	142.8	1.0	0.55	1.60	0.57

Hole	Prospect	From	To	Interval (M)	Au g/t	Ag g/t	AuEq
ARD002	Aloe Rek	18.5	18.9	0.4	0.44	13.50	0.60
		191.0	203.0	12.0	0.75	20.30	0.91
	<i>including</i>	194.0	195.0	1.0	4.22	34.10	4.63
		207.0	220.0	13.0	0.54	11.30	0.67
	<i>including</i>	215.0	216.0	1.0	3.77	22.90	4.05
		227.9	228.7	0.8	0.39	3.00	0.43
		243.1	244.0	0.9	0.21	3.00	0.24

Hole	Prospect	From	To	Interval (M)	Au g/t	Ag g/t	AuEq
ARD003	Aloe Rek	55.8	60.4	4.6	0.89	6.26	0.96
		62.1	63.3	1.2	0.71	2.10	0.73
		68.5	71.9	3.4	6.68	7.81	6.77
	<i>including</i>	70.2	70.9	0.7	30.05	21.90	30.31
		74.5	75.6	1.1	1.33	8.00	1.43
		80	85	5.0	1.44	2.24	1.47
	<i>including</i>	83.4	85	1.6	2.23	1.68	2.25
		86.3	89.7	3.4	1.11	3.02	1.15
	<i>including</i>	87.5	88.8	1.3	2.07	4.75	2.13
		96.5	97.5	1.0	0.71	0.60	0.72
		130.8	131.7	0.9	0.29	1.90	0.31
		135.8	136.4	0.6	0.25	1.70	0.27



Hole	Prospect	From	To	Interval (M)	Au g/t	Ag g/t	AuEq
ARD004	Aloe Rek	124.4	125	0.6	0.23	2.40	0.26
		129.2	129.9	0.7	0.63	1.20	0.65
ARD005	Aloe Rek	32.5	33	0.5	0.97	13.00	1.12
		54.1	54.7	0.6	0.44	2.40	0.47
		59.45	66.2	6.75	0.39	6.05	0.46
		75.2	76.2	1	0.68	12.38	0.83
		78	78.75	0.75	0.4	25.20	0.7
Hole	Prospect	From	To	Interval (M)	Au g/t	Ag g/t	AuEq
ARD006	Aloe Rek	21.3	41	19.7	0.65	4.68	0.71
	<i>including</i>	31	33.5	2.5	2.26	10.28	2.39
		49.85	54	4.15	1.35	11.04	1.48
		63.2	64.5	1.3	0.59	26.88	0.92
		68.4	69	0.6	0.42	10.00	0.54
Hole	Prospect	From	To	Interval (M)	Au g/t	Ag g/t	AuEq
ARD007	Aloe Rek	7.2	8	0.8	0.54	1.70	0.56
		17.9	36.35	18.45	1.38	3.84	1.43
	<i>including</i>	18.9	21.25	2.35	3.41	1.35	3.43
	<i>and</i>	35	36.35	1.35	4.89	10.67	5.02
		38.35	41.6	3.25	0.32	3.41	0.36
		55.2	55.6	0.4	0.44	3.10	0.48
		56.8	57.2	0.4	0.34	6.70	0.42
		68.75	73.4	4.65	0.85	5.12	0.92
		83.3	84.3	1	0.58	1.30	0.60
		86.6	92.2	5.6	1.14	3.59	1.18
	<i>including</i>	87.6	88.9	1.3	3.12	6.45	3.20
		17.9	92.2	74.3	0.54	2.69	0.58
		<i>incl 41.55m of <0.2g/t Au (below cog)</i>					
		108.5	110	1.5	0.22	2.72	0.26
Hole	Prospect	From	To	Interval (M)	Au g/t	Ag g/t	AuEq
ARD008	Aloe Rek	39.8	40.25	0.45	0.66	8.40	0.76
		108	109.00	1.00	0.36	3.10	0.40
		120.4	121.70	1.30	0.49	2.92	0.53
		124.3	124.70	0.40	0.39	1.40	0.40
		145.85	146.30	0.45	0.21	1.00	0.22
		178.2	179.00	0.45	0.28	0.50	0.28
		245.1	245.60	0.50	1.15	5.20	1.21
		249	250.55	1.55	1.00	212.58	3.55



Hole	Prospect	From	To	Interval (M)	Au g/t	Ag g/t	<i>AuEq</i>
ARD009	Aloe Rek	3.2	3.6	0.4	1.63	1.20	1.64
		4.8	5.2	0.4	0.54	0.50	0.55
		31.6	32.4	0.8	0.28	1.40	0.30
		55.1	59.0	3.9	0.99	2.37	1.02
		62.0	62.4	0.4	0.61	2.50	0.64
		67.5	87.5	20.0	7.57	8.50	7.67
	<i>including</i>	70.5	81.5	11.0	13.45	13.68	13.61
	<i>and</i>	75.8	79.0	3.3	31.64	26.80	31.96

ATTACHMENT 1

JORC Code, 2012 Edition – Table 1 report SPL1454

Section 1 Sampling Techniques and Data

(Criteria in this section apply to all succeeding sections.)

Criteria	JORC Code explanation	Commentary
Sampling techniques	<ul style="list-style-type: none"> <i>Nature and quality of sampling (eg cut channels, random chips, or specific specialised industry standard measurement tools appropriate to the minerals under investigation, such as down hole gamma sondes, or handheld XRF instruments, etc). These examples should not be taken as limiting the broad meaning of sampling.</i> <i>Include reference to measures taken to ensure sample representivity and the appropriate calibration of any measurement tools or systems used.</i> <i>Aspects of the determination of mineralisation that are Material to the Public Report.</i> <i>In cases where 'industry standard' work has been done this would be relatively simple (eg 'reverse circulation drilling was used to obtain 1 m samples from which 3 kg was pulverised to produce a 30 g charge for fire assay'). In other cases more explanation may be required, such as where there is coarse gold that has inherent sampling problems. Unusual commodities or mineralisation types (eg submarine nodules) may warrant disclosure of detailed information.</i> 	<ul style="list-style-type: none"> Rock samples were collected from quartz veins exposed on surface and within hand dug artisanal miner pits. Individual samples were comprised as pieces of the vein(s) material chipped the exposure. Effort was made to chip across the vein perpendicular to vein trend. Samples were collected from zones of visible sulphide mineralization and or alteration such as clay-pyrite or manganese. Samples were bagged and tagged with unique numbered assay tags inserted into each sample. The samples were delivered via commercial carrier to Pt. Geoservices Geoassay Mineral Laboratory located in Cikarang, Bekasi, West Java, Indonesia. The samples were oven dried at 105°C, weighed then jaw crushed to 70% less than 2mm, riffle split to obtain 250g, that was then pulverized to >85% passing 75 microns. Two splits were taken from this product, one for analysis the other for QAQC. Each sample was analysed for gold using FAA30 fire assay method using a 30g charge with an AAS finish. Samples containing >50 g/t (ppm) Au were further assayed using the FAGRAV gravimetric method. Ag, base metals and a suite of other elements were estimated by method GA102-ICP, which used an aqua regia digest with ICP-OES finish. Samples containing >100ppm Ag were further assayed using GOA-02 method which was an aqua regia ore grade digest with an AA finish. A single certified reference material and a blank sample were inserted into the submitted sample batch for QAQC purpose.
Drilling techniques	<ul style="list-style-type: none"> <i>Drill type (eg core, reverse circulation, open-hole hammer, rotary air blast, auger, Bangka, sonic, etc) and details (eg core diameter, triple or standard tube, depth of diamond tails, face-sampling bit or other type, whether core is oriented and if so, by what method, etc).</i> 	<ul style="list-style-type: none"> Drilling is being conducted using a wireline, man-portable diamond drill. Core is obtained using PQ (85mm) and HQ (63.5mm) triple tube core barrels. Oriented drill core is obtained using an Axis digital Ori tool.

Criteria	JORC Code explanation	Commentary
Drill sample recovery	<ul style="list-style-type: none"> • <i>Method of recording and assessing core and chip sample recoveries and results assessed.</i> • <i>Measures taken to maximise sample recovery and ensure representative nature of the samples.</i> • <i>Whether a relationship exists between sample recovery and grade and whether sample bias may have occurred due to preferential loss/gain of fine/coarse material.</i> 	<ul style="list-style-type: none"> • All drill core is logged by Company geologist discriminating lithologies and recording pertinent geological observations related to mineralization and alteration. • Drilling is conducted using triple tube core barrel and utilising various drilling muds in combination with drill bit type and short core runs to maximize core recovery. The drill company is contractually obligated to obtain 90% core recovery. • At this point in the drill program there has not been enough data collected to determine if any sampling bias related to core recovery exists.
Logging	<ul style="list-style-type: none"> • <i>Whether core and chip samples have been geologically and geotechnically logged to a level of detail to support appropriate Mineral Resource estimation, mining studies and metallurgical studies.</i> • <i>Whether logging is qualitative or quantitative in nature. Core (or costean, channel, etc) photography.</i> • <i>The total length and percentage of the relevant intersections logged.</i> 	<ul style="list-style-type: none"> • All core is digitally logged in its entirety by Company geologists using unique capture codes and in sufficient detail to discriminate lithologies and record all pertinent geological observations related to mineralization, alteration and structural features. The core is also logged with respect to industry standard RQD parameters that record basic geotechnical factors. This data will form the basis for future mineral resource estimation and other deposit studies. • High resolution photographs are taken of all core boxes prior to being cut both wet and dry. Photographs are stored for future reference.

Criteria	JORC Code explanation	Commentary
Sub-sampling techniques and sample preparation	<ul style="list-style-type: none"> • <i>If core, whether cut or sawn and whether quarter, half or all core taken.</i> • <i>If non-core, whether riffled, tube sampled, rotary split, etc and whether sampled wet or dry.</i> • <i>For all sample types, the nature, quality and appropriateness of the sample preparation technique.</i> • <i>Quality control procedures adopted for all sub-sampling stages to maximise representivity of samples.</i> • <i>Measures taken to ensure that the sampling is representative of the in situ material collected, including for instance results for field duplicate/second-half sampling.</i> • <i>Whether sample sizes are appropriate to the grain size of the material being sampled.</i> 	<ul style="list-style-type: none"> • The analytical methods selected are deemed appropriate for the level of analytical accuracy required at this early stage of exploration. The objective of the sampling was to determine where significant Au-Ag mineralization resides within the various textural types of quartz veins and alteration types that occur. • Half-core samples were bagged and tagged with unique numbered assay tags inserted into each sample. The samples were delivered via commercial carrier to Pt. Geoservices Geoassay Mineral Laboratory located in Cikarang, Bekasi, West Java, Indonesia. The samples were oven dried at 105°C, weighed then jaw crushed to 70% less than 2mm, riffle split to obtain 250g, that was then pulverized to >85% passing 75 microns. Two splits were taken from this product, one for analysis the other for QAQC. Each sample was analysed for gold using FAA30 fire assay method using a 30g charge with an AAS finish. Samples containing >50 g/t (ppm) Au were further assayed using the FAGRAV gravimetric method. Ag, base metals and a suite of other elements were estimated by method GA102-ICP, which used an aqua regia digest with ICP-OES finish. Samples containing >100ppm Ag were further assayed using GOA-02 method which was an aqua regia ore grade digest with an AA finish. • A single certified reference material and a blank sample were inserted at the rate of 1 each per 25 core samples. for QAQC purpose. • The sample preparation completed at Pt.Geoservices prior to analysis are deemed appropriate for surface rock and drill core samples. Select high grade Au samples will also be analysed using a screen fire assay technique to determine if any coarse Au (+200 mesh) occurs. • Drill core is cut in half using a core saw with half core sampled for individual assay. Geologists are careful to avoid any sampling bias. Samples are collected at 0.25 to 1m intervals. to optimise understanding of the controls of mineralization with attention given to characterizing the different rock types and types and styles of mineralization and alteration that occur.

Quality of assay data and laboratory tests	<ul style="list-style-type: none"> • <i>The nature, quality and appropriateness of the assaying and laboratory procedures used and whether the technique is considered partial or total.</i> • <i>For geophysical tools, spectrometers, handheld XRF instruments, etc, the parameters used in determining the analysis including instrument make and model, reading times, calibrations factors applied and their derivation, etc.</i> • <i>Nature of quality control procedures adopted (eg standards, blanks, duplicates, external laboratory checks) and whether acceptable levels of accuracy (ie lack of bias) and precision have been established.</i> 	<ul style="list-style-type: none"> • The sample prep and assay methods utilized by Pt. Geoservices are appropriate for the sample type assayed and level of accuracy required. • The Company regularly uses an Olympus Vanta portable hand-held XRF analyzer (2022) to screen drill core for mineralization before cutting and sampling. This allows for some understanding of the distribution of mineralization prior to sampling to better ensure that the sampled core is representative of the type and style of mineralization. Numerous readings are obtained and recorded for future reference. • The hand-held XRF provides confirmation that mineralization is present however it is not an accurate determination of the concentration within the sample analysed. Limitations include; very small sampling window, homogeneity of mineralization, penetration depth, possible surface effects, etc. • The results obtained from the hand held pXRF are subject to confirmation by chemical analysis from an independent laboratory. • The Company employs industry standard QAQC protocols to check the accuracy and bias of reported sample assays. Sample assay failures are indicated if outside of 3 standard deviations. Certified reference material, blanks and sample splits are also tracked over time to determine if any bias.
Verification of sampling and assaying	<ul style="list-style-type: none"> • <i>The verification of significant intersections by either independent or alternative company personnel.</i> • <i>The use of twinned holes.</i> • <i>Documentation of primary data, data entry procedures, data verification, data storage (physical and electronic) protocols.</i> • <i>Discuss any adjustment to assay data.</i> 	<ul style="list-style-type: none"> • Core is logged by Company geologists with data entered digitally using set data codes for lithology, alteration, mineralization and related rock characteristics. • Core logging digital data is checked and verified for errors along with core assay data by Company data manager and stored in Access format. • There is no adjustment of assay data after QAQC determination of pass or fail.
Location of data points	<ul style="list-style-type: none"> • <i>Accuracy and quality of surveys used to locate drill holes (collar and down-hole surveys), trenches, mine workings and other locations used in Mineral Resource estimation.</i> • <i>Specification of the grid system used.</i> 	<ul style="list-style-type: none"> • Drillhole collars and collected field samples are located using hand-held Garmin GPS to a <5m accuracy. • Drillhole collar locations will also be located by a surveyor using a Trimble GPS unit to a <1m accuracy.

	<ul style="list-style-type: none"> • <i>Quality and adequacy of topographic control.</i> 	<ul style="list-style-type: none"> • The project datum is UTM WGS 84 – Zone 47N. • The Company has resurveyed and confirmed accuracy of historical survey benchmarks on the property for current surveying requirements.
Data spacing and distribution	<ul style="list-style-type: none"> • <i>Data spacing for reporting of Exploration Results.</i> • <i>Whether the data spacing and distribution is sufficient to establish the degree of geological and grade continuity appropriate for the Mineral Resource and Ore Reserve estimation procedure(s) and classifications applied.</i> • <i>Whether sample compositing has been applied.</i> 	<ul style="list-style-type: none"> • The spacing of collected field samples and the spacing of drill hole collars is deemed appropriate for the level of the current exploration program and initial drilling of selected targets to identify where mineralization occurs. This will be followed by more rigorous drilling to establish continuity and grade profile within zones of potential resource determination. • No physical sample compositing has been applied aside. Reported assays are averaged over specific, continuous zones if deemed significant. A cut-off of 0.2 g/t Au with a maximum 1m of internal dilution is utilized for determination of a significant assay interval. No top cut of high-grade assays has been done. • Where assay intervals include variable sample lengths the sample assays are weighted over the selected interval length to account for the variation.
Orientation of data in relation to geological structure	<ul style="list-style-type: none"> • <i>Whether the orientation of sampling achieves unbiased sampling of possible structures and the extent to which this is known, considering the deposit type.</i> • <i>If the relationship between the drilling orientation and the orientation of key mineralised structures is considered to have introduced a sampling bias, this should be assessed and reported if material.</i> 	<ul style="list-style-type: none"> • Collected field samples and drill hole locations and drilling parameters are set to best obtain representative data according to the interpreted type and style and controls of mineralization being tested. Particular effort is made to drill normal to such controlling structures or host stratigraphy to obtain a near to true width zone indication as possible. • Downhole core orientations were obtained using a Axis digital orientation tool.
Sample security	<ul style="list-style-type: none"> • <i>The measures taken to ensure sample security.</i> 	<ul style="list-style-type: none"> • Collected samples were placed in sturdy plastic sacks and sealed for transport. Samples are delivered to expeditor and shipped. Any broken bags received by the lab are reported to the Company. This has not happened to date.
Audits or reviews	<ul style="list-style-type: none"> • <i>The results of any audits or reviews of sampling techniques and data.</i> 	<ul style="list-style-type: none"> • The have been no independent audit or review of sampling protocols.

Section 2 Reporting of Exploration Results

(Criteria listed in the preceding section also apply to this section.)

Criteria	JORC Code explanation	Commentary
Mineral tenement and land tenure status	<ul style="list-style-type: none"> Type, reference name/number, location and ownership including agreements or material issues with third parties such as joint ventures, partnerships, overriding royalties, native title interests, historical sites, wilderness or national park and environmental settings. The security of the tenure held at the time of reporting along with any known impediments to obtaining a licence to operate in the area. 	<ul style="list-style-type: none"> The Woyla project tenement is held in the name of PT Woyla Aceh Minerals (PT WAM), which consists in 80% Woyla Aceh Ltd, 15% Quralon Pte Ltd, 2.5% PT Mutiara Mitramin, 2.5% PT Indo Noble Abadi. PT WAM holds a 6th Generation Contract of Work dated 17 March 1997. The Woyla Contract of Work was under a Mines Department approved state of suspension from exploration activities from 1999-2006 during the prolonged civil conflict in Aceh. An extended moratorium on exploration activities within Aceh has recently been lifted. The Contract of Work (177.K/30/DJB/2018) for the tenement was in voluntary suspension until FEG secured the necessary environmental and land use permits. FEG has recently been granted the environmental permit (PIPPIB) for 7688 ha of the protected forest area. This allows FEG to conduct exploration activities within the permit area under certain conditions.
Exploration done by other parties	<ul style="list-style-type: none"> Acknowledgment and appraisal of exploration by other parties. 	<ul style="list-style-type: none"> Reconnaissance and detailed geological mapping were completed during 1996 – 1997 by Newcrest Mining and Barrick Gold. A helicopter-borne magnetic and radiometric survey was flown by World Geoscience in 1996. The companies collected stream, soil and rock samples of exposed veins and also completed petrology studies on selected samples.

Criteria	JORC Code explanation	Commentary
Geology	<ul style="list-style-type: none"> • <i>Deposit type, geological setting and style of mineralisation.</i> 	<ul style="list-style-type: none"> • The project area sits within the Neogene Gold Belt of Sumatra, characterised by Miocene-Neogene gold intrusion centred mineralisation. Along strike in a NW direction from the project area are the Miwah high-sulphidation gold deposit and Beutong- porphyry and skarn system and along strike to the SE lies the Abong (sediment hosted) and Meluak (high-sulphidation) gold deposits. • Previous exploration has identified several low sulphidation, epithermal type Au-Ag bearing quartz/breccia systems hosted within and likely controlled by a series of fault structures related to the Sumatra Fault and emplacement of intrusions. As such, Au-Cu porphyry style, associated skarn and high- sulphidation Au may also be found within the Woyla project area. Downstream from the known veins systems are several alluvial-Au workings (Anu Renguet).
Drill hole Information	<ul style="list-style-type: none"> • <i>A summary of all information material to the understanding of the exploration results including a tabulation of the following information for all Material drill holes:</i> <ul style="list-style-type: none"> ○ <i>easting and northing of the drill hole collar</i> ○ <i>elevation or RL (Reduced Level – elevation above sea level in metres) of the drill hole collar</i> ○ <i>dip and azimuth of the hole</i> ○ <i>down hole length and interception depth</i> ○ <i>hole length.</i> • <i>If the exclusion of this information is justified on the basis that the information is not Material and this exclusion does not detract from the understanding of the report, the Competent Person should clearly explain why this is the case.</i> 	<ul style="list-style-type: none"> • No previous drilling has been completed. • Specific details of all drill holes completed by FEG are reported.
Data aggregation methods	<ul style="list-style-type: none"> • <i>In reporting Exploration Results, weighting averaging techniques, maximum and/or minimum grade truncations (eg cutting of high grades) and cut-off grades are usually Material and should be stated.</i> • <i>Where aggregate intercepts incorporate short lengths of high grade results and longer lengths of low grade results, the procedure used for such aggregation should be stated and some typical examples of such aggregations should be shown in detail.</i> • <i>The assumptions used for any reporting of metal equivalent values should be clearly stated.</i> 	<ul style="list-style-type: none"> • All values are reported as assayed and no equivalent grades (eg. Au Eq) have been included.

Criteria	JORC Code explanation	Commentary
Relationship between mineralisation widths and intercept lengths	<ul style="list-style-type: none"> • <i>These relationships are particularly important in the reporting of Exploration Results.</i> • <i>If the geometry of the mineralisation with respect to the drill hole angle is known, its nature should be reported.</i> • <i>If it is not known and only the down hole lengths are reported, there should be a clear statement to this effect (eg 'down hole length, true width not known').</i> 	<ul style="list-style-type: none"> • The rock samples collected are considered a reflection of the nature of mineralization at the point of sampling. Aside from a visual estimation at the time of sampling no accurate determination of vein widths was made. • The Company does distinguish between downhole length and true width (apparent) and reports each as necessary. • Drill core is cut in half using a core saw with half core sampled for individual assay. Geologists are careful to avoid any sampling bias. Samples are collected at 0.25 to 1m intervals. to optimise understanding of the controls of mineralization with attention given to characterizing the different rock types and types and styles of mineralization and alteration that occur.
Diagrams	<ul style="list-style-type: none"> • <i>Appropriate maps and sections (with scales) and tabulations of intercepts should be included for any significant discovery being reported These should include, but not be limited to a plan view of drill hole collar locations and appropriate sectional views.</i> 	<ul style="list-style-type: none"> • Pertinent maps and sections are included in the corporate release of sample results
Balanced reporting	<ul style="list-style-type: none"> • <i>Where comprehensive reporting of all Exploration Results is not practicable, representative reporting of both low and high grades and/or widths should be practiced to avoid misleading reporting of Exploration Results.</i> • 	<ul style="list-style-type: none"> • Reporting is fully representative of the data. •

Criteria	JORC Code explanation	Commentary
Other substantive exploration data	<ul style="list-style-type: none"> Other exploration data, if meaningful and material, should be reported including (but not limited to): geological observations; geophysical survey results; geochemical survey results; bulk samples – size and method of treatment; metallurgical test results; bulk density, groundwater, geotechnical and rock characteristics; potential deleterious or contaminating substances. 	<ul style="list-style-type: none"> All data is fully reported. Metallurgical characterization tests were performed on 3, Au-Ag mineralised samples compiled from retained coarse reject material of previously crushed Woyla drill core. The composites were made to be representative of the Au-Ag grade distribution reflected in the core assays. The test work was conducted at Pt. Geoservices Mineral Laboratory in Cikarang, West Java. The test flowsheets were designed by the Company's consultant metallurgist, Dr. Mark Steemson, who supervised the work and interpreted the results. The test work involved: <ul style="list-style-type: none"> 1. Full assays on each composite. 2. Diagnostic leach testing to determine the deportment of gold in each sample – cyanide leachable, carbonate hosted, arsenopyrite hosted, other sulphide hosted, and silicate encapsulated. The cyanide. Leachable includes cyanide leachable gravity gold and free gold. 3. Agitated leach test on each sample to determine gold and silver recoveries and cyanide usage. There was insufficient sample to remove gravity gold before the agitated leach tests. The average cyanide soluble gold recovery (gravity and free gold) was 91%, and for silver 86%. The non-cyanide leachable gold was evenly distributed amongst carbonate, arsenopyrite, other sulphides, and silicate encapsulated minerals. The diagnostic leach tests indicate that gold and silver can be recovered using conventional cyanide leaching.
Further work	<ul style="list-style-type: none"> The nature and scale of planned further work (eg tests for lateral extensions or depth extensions or large-scale step-out drilling). Diagrams clearly highlighting the areas of possible extensions, including the main geological interpretations and future drilling areas, provided this information is not commercially 	<ul style="list-style-type: none"> The current drill program as reported by FEG is the first completed on the property and results obtained will determine the scope of future drilling and property wide exploration. Based on results from the drilled prospect areas the Company believes that additional drilling is warranted.

Section 3 does not apply as the Company has not released any mineral resource estimate for the Woyla property. Section 4 does not apply as reserve estimates are not being disclosed at this time and Section 5 does not apply as this section relates to the reporting of diamonds and other gemstones.