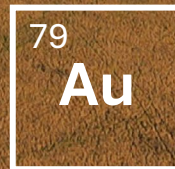




At the forefront of discovery



15 May 2024

Christopher Byrne *CEO and Managing Director*
chris.byrne@legacyminerals.com.au +61 (0) 499 527 547

AMEC – Austex
Brisbane Resources
Lunch

Disclaimer

This presentation may contain certain statements and projections provided by or on behalf of Legacy Minerals Holdings Limited (**ASX: LGM, Legacy Minerals, or the Company**) with respect to the anticipated future undertakings. These forward-looking statements reflect various assumptions by or on behalf of Legacy Minerals. Accordingly, these statements are subject to significant business, economic and competitive uncertainties and contingencies associated with the mining industry which may be beyond the control of Legacy Minerals which could cause actual results or trends to differ materially, including but not limited to price and currency fluctuations, geotechnical factors, drilling and production results, development progress, operating results, reserve estimates, legislative, fiscal and regulatory developments, economic and financial markets conditions in various countries, approvals and cost estimates, environmental risks, ability to meet funding requirements, share price volatility. Accordingly, there can be no assurance that such statements and projections will be realised. Legacy Minerals makes no representations as to the accuracy or completeness of any such statement of projections or that any forecasts will be achieved.

Additionally, Legacy Minerals makes no representation or warranty, express or implied, in relation to, and no responsibility or liability (whether for negligence, under statute or otherwise) is or will be accepted by Legacy Minerals or by any of their respective officers, directors, shareholders, partners, employees, or advisers as to or in relation to the accuracy or completeness of the information, statements, opinions or matters (express or implied) arising out of, contained in or derived from this presentation or any omission from this presentation or of any other written or oral information or opinions provided now or in the future to any interested party or its advisers. In furnishing this presentation, Legacy Minerals undertakes no obligation to provide any additional or updated information whether as a result of new information, future events or results or otherwise. Nothing in this material should be construed as either an offer to sell or a solicitation of an offer to buy or sell securities. It does not include all available information and should not be used in isolation as a basis to invest in Legacy Minerals.

This presentation contains exploration results and historic exploration results as originally reported the Company's Prospectus dated 28 July 2021 and released 9 September and subsequent ASX market announcements. The Company confirms that it is not aware of any new information that materially affects the information included in the original market announcements and that all material assumptions and technical parameters underpinning the estimates in the relevant market announcements continue to apply and have not materially changed. The Company confirms that the form and context in which the Competent Persons' findings are presented have not been materially modified from the original market announcements.

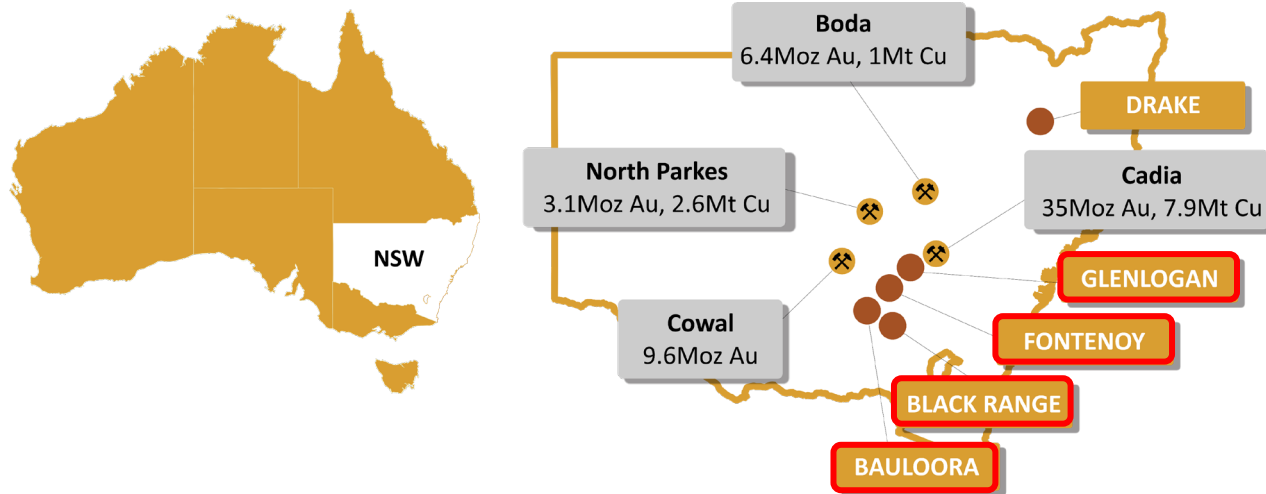
The information in this presentation that relates to Exploration Targets, Exploration Results, Mineral Resources or Ore Reserves is based on information compiled by Thomas Wall, a Competent Person who is a Member of the Australian Institute of Geoscientists. Mr Wall is the Technical Director is a full-time employee of Legacy Minerals Limited and a shareholder, who has sufficient experience that is relevant to the style of mineralisation and type of deposit under consideration and to the activity being undertaken to qualify as a Competent Person as defined in the 2012 edition of the Australasian Code for Reporting of Exploration Results, Mineral Resources and Ore Reserves. Mr Wall consents to the inclusion in the report of the matters based on his information in the form and context in which it appears.

The release of these presentation materials has been authorised by the Board.



Legacy Minerals Assets

Lachlan Fold Belt – A World Class Mining District



Map of central NSW showing Legacy Minerals tenements and geographical location of major mining and exploration projects in NSW^{1,2,3,4} (figures are expressed as mineral resources).

Drilling Campaigns in 2024

Black Range	Au-Ag	LGM 100%
Bauloora	Au-Ag	Newmont™
Fontenoy	Ni-Cu-PGE-Au	EARTH AI
Glenloghan	Cu-Au	S2 Resources
Drake	Au-Cu	LGM 100%
Cobar		LGM 100%
Rockley, Harden		LGM 100%

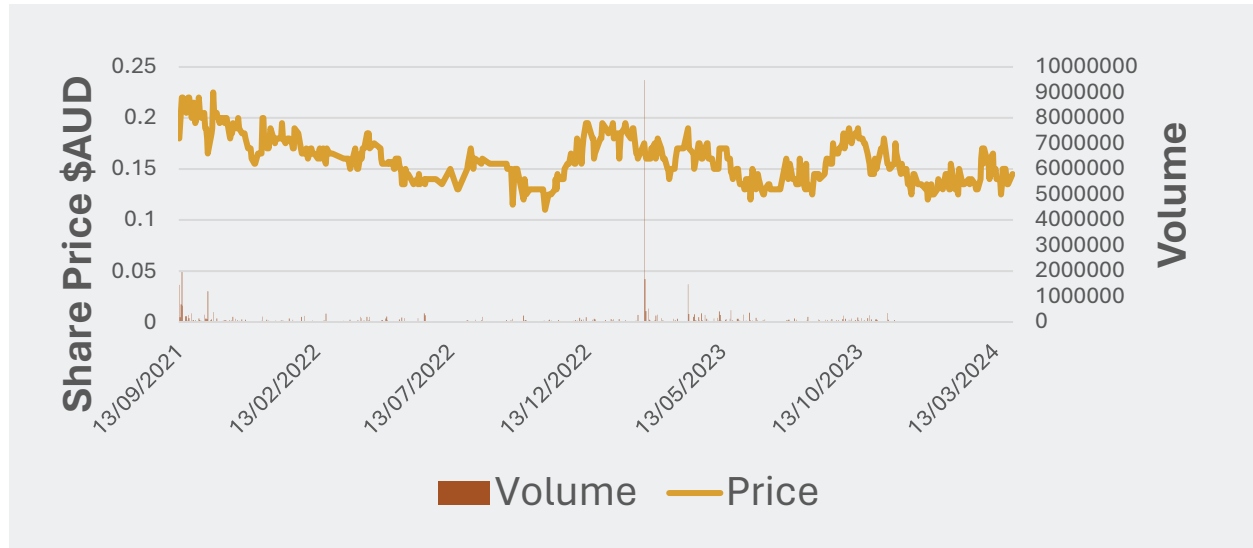


ASX: LGM

Note: references on this slide are in the Appendix – Endnotes on Slides 23 and 24

Company Overview¹

Share Price **\$0.175**



Market Cap
\$18.4M

Shares Outstanding
105M

Debt
Nil

Cash – 31 Mar
\$3.2M

Top 20
46%

Liquidity 23/24
~\$0.5M month

Joint Venture Funding
\$25.5M

Newmont

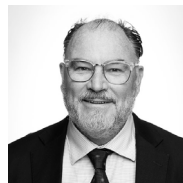
S2R
S2 Resources

EARTH AI

Board and Management



Dr David Carland
Non-Executive
Chairman



Matthew Wall
Non-Executive
Director



Douglas Menzies
Non-Executive
Director



Christopher Byrne
CEO and
Managing Director



Thomas Wall
Exploration Manager
and Executive Director



ASX: LGM

Value Proposition

100% Owned Projects

- 5 x 100% owned high-quality projects - no royalties
- Multiple projects being actively explored
- All projects, bar Drake, acquired for \$0 – low-cost base to add value
- **Full discovery upside to shareholders upon exploration success**



Joint Ventures

- **Newmont**
- **S2 Resources**



- Aggressive exploration targeting world class deposits
- Financed pathway to mining under earn in
- **Legacy Minerals retains 20% ownership of Project**

Hybrid Discovery Approach

- Direct upside for shareholders through self-funded exploration
- Minimise dilution and financing risk with partner funding
- \$25 million in JV and strategic alliance funding
- Multiple active projects increase the probability of discovery success

- **4 projects to be drilled in 2024**



Value Proposition – LGMs Partnership Projects

Where partnerships have delivered significant returns for Greatland Gold shareholders

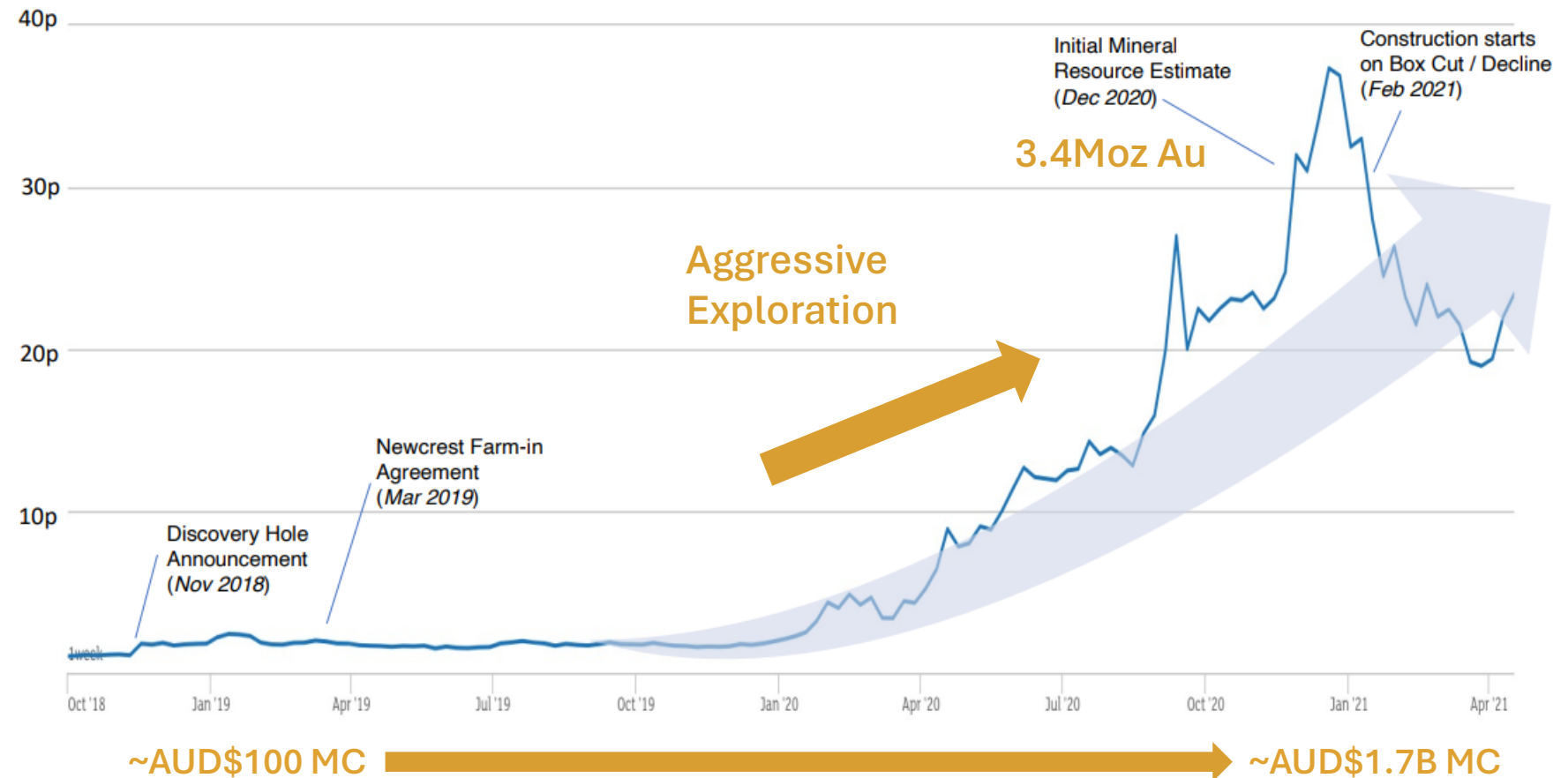
Greatland – Newcrest JV¹

- \$60M for 70% over 7 years
- Greatland to fund its 30%
- As of 2023 ~\$300M in debt/debt facility

Legacy – Newmont and S2R JV²

- ✓ JV's ensure sufficient funding to deliver potential discovery's
- ✓ **LGM option for 20% loan carried to production**
Payments to come from production revenue

Greatland Gold Share Price 3 Year Period (> x 10)



ASX: LGM

Note: references on this slide are in the Appendix – Endnotes on Slides 22-24

Black Range

Drilling a high-grade gold target



Black Range

100% ownership of a large underexplored epithermal system

District scale control – 905km² license

- **Newcrest** were the last to complete significant exploration over **30 years ago**¹
- Newcrest relinquished the ground in 1992 (Cadia discovery)¹

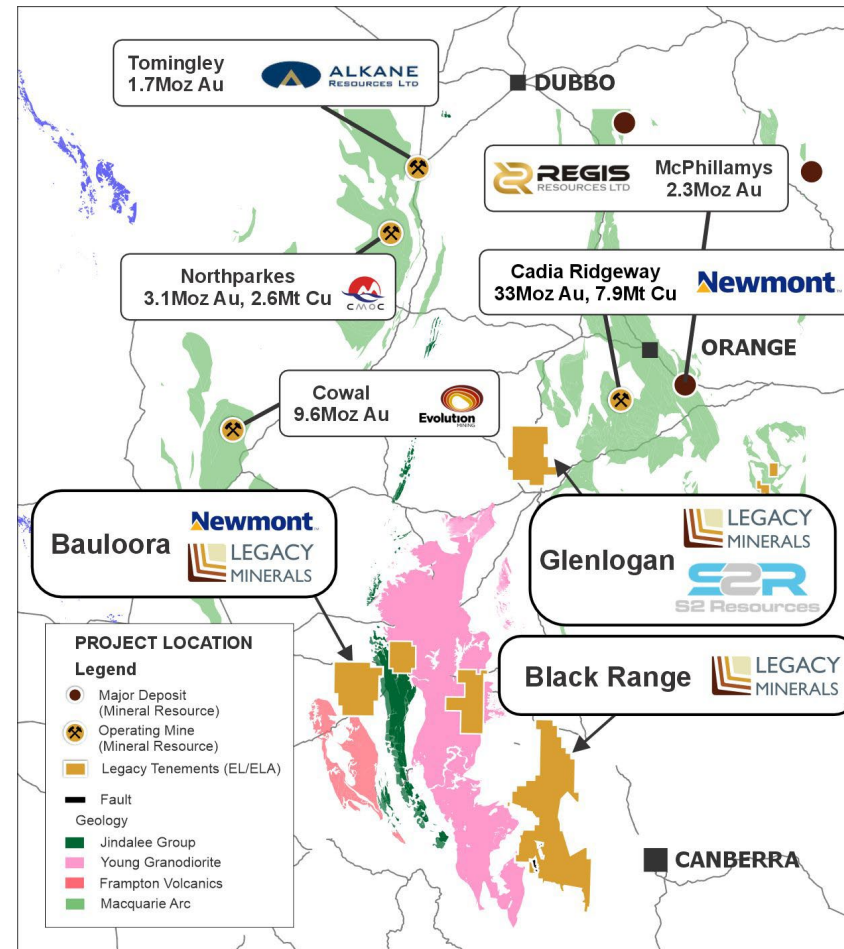
Why is it a compelling project?

- Preservation and **widespread Au anomalism (Sugarbag Hill)**
- 65km from Bauloora with clear parallels between the two systems
- Newcrest dated Black Range to be the same age mineralisation as Bauloora¹

Upcoming news flow

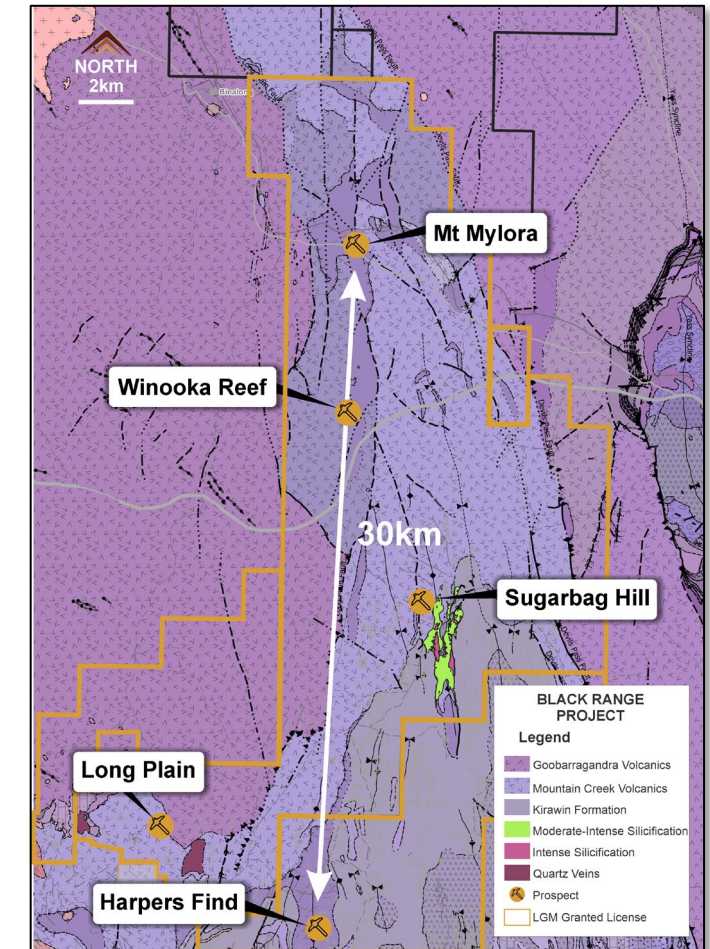
- **Drilling underway**

Black Range Project



Regional Setting of the Black Range project and nearby operations^{2,3,4,5,6}

Main Prospects



Black Range EL with solid geology showing major prospect



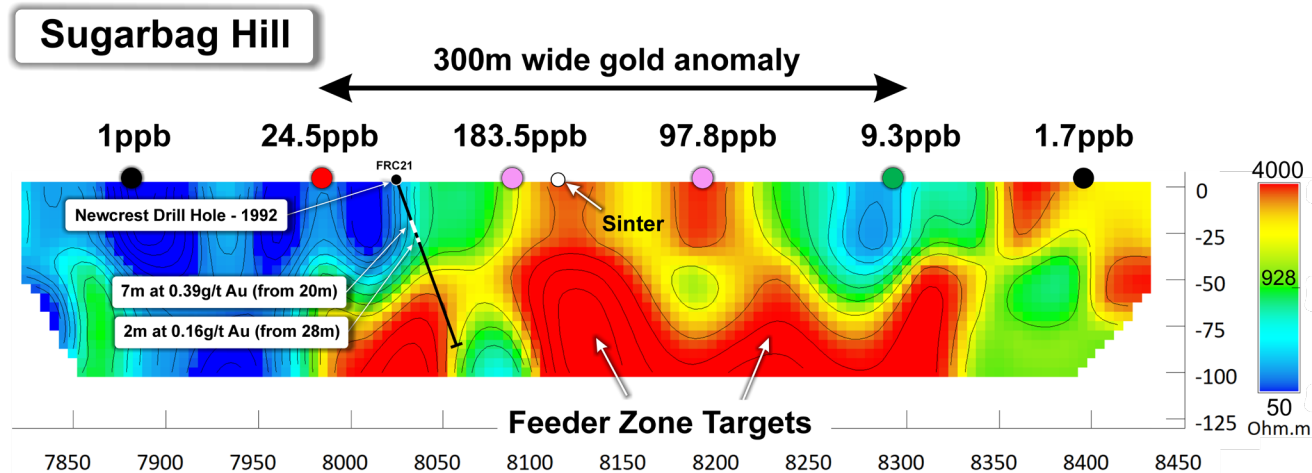
ASX: LGM

Note: references on this slide are in the Appendix – Endnotes on Slides 22-24

Targeting High Grade Gold

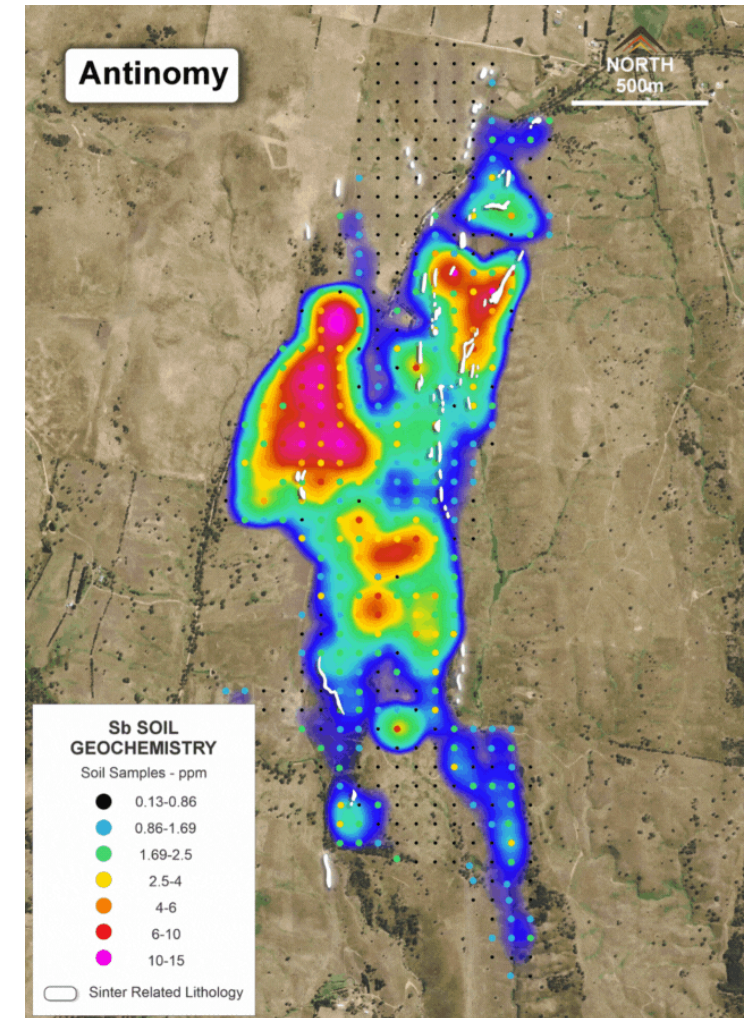
Undrilled coincident pathfinder element targets

- The latest soil sampling results at Sugarbag Hill have mapped¹:
 - A **3.5km x 1.2km zone** of elevated low-sulphidation epithermal Au-Ag pathfinder elements
 - 2.2km long gold trend >20ppb Au (up to 296ppb Au).**
- First pass rock chip sampling has returned **up to 2.27g/t gold and 29.6g/t silver¹**.



Last drilling in 1992 when gold was A\$500/oz

- Newcrest drilling did not hit the interpreted high-grade feeding zones
- Legacy Minerals currently drilling this target



Sugar Bag Hill soil geochemistry¹



ASX: LGM

Note: references on this slide are in the Appendix – Endnotes on Slides 22-24

Bauloora

Large scale programs underway and fully funded



Bauloora

Targeting a Tier-1 Epithermal Deposit

Ongoing discovery exposure

- Drilling to commence imminently

Newmont Joint Venture (\$15M)¹

- Discovery focused joint venture
- **LGM option for 20% loan carried to production**

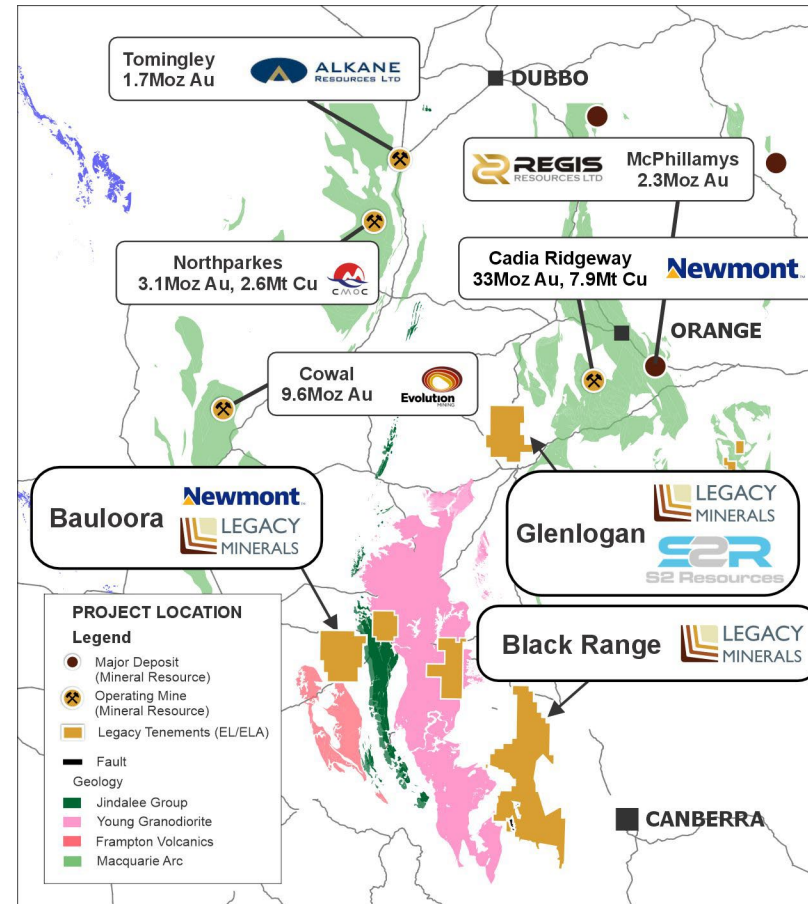
District scale control – 330km² license

- Alteration across 150km² zone²
- 27km² low sulphidation vein field

High-Grades and Extensive Veining

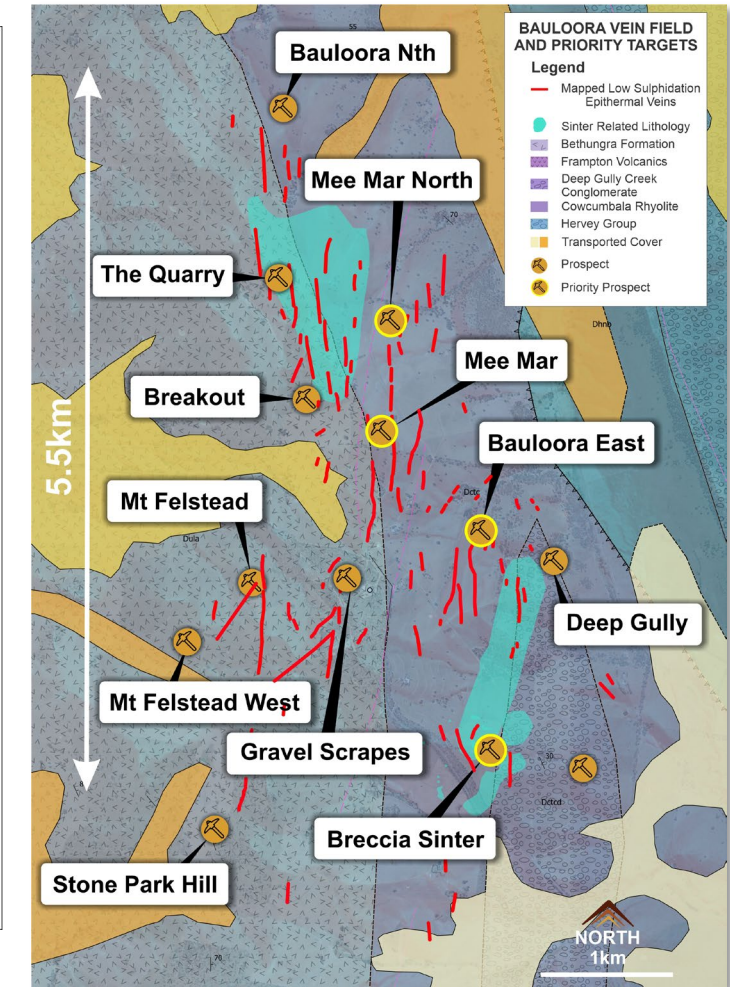
- Veins up to 3m wide at surface for >2km
- 9m at 2.0g/t Au, 28.4g/t Ag, and 9.87% Zn+Pb from 145m³
- **3,701g/t Ag, 6.9g/t Au, 6.4% Cu, and 55% Pb+Zn (0.2m face sample)⁴**
- 6m at 3.56g/t Au, 10.95g/t Ag, 0.22% Cu and 6.47% Pb+Zn (from 57m)⁴

Bauloora Project



Map of central NSW showing Legacy Minerals tenements and geographical location of major mining and exploration projects in NSW (figures are expressed as mineral resources)²

27km² Primary Vein Field



Current combined extent of low-sulphidation epithermal-style textured veins and sinter related lithology²



ASX: LGM

Fontenoy

Artificial Intelligence PGE-Ni-Cu Discovery



EARTH AI



Reaping the reward of Artificial Intelligence

EarthAI Strategic Alliance

Discovery Drillhole – February 2024¹

- **34m at 0.5g/t 3E PGE*** including a higher grade zone of:
- **10m at 1.2g/t 3E PGE, 0.2% Ni** and 891ppm Cu from 388m down-hole.

Unlocked potential for magmatic-related PGE-Ni-Cu

- Deposit styles such Nova-Bollinger (IGO) and Julimar (Chalice)^{2,3}.

PGE's and Nickel listed as Critical and Strategic Minerals

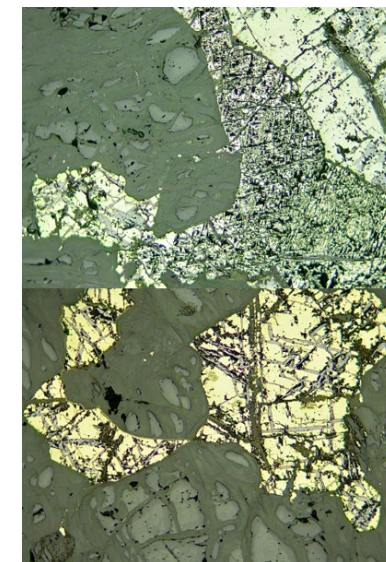
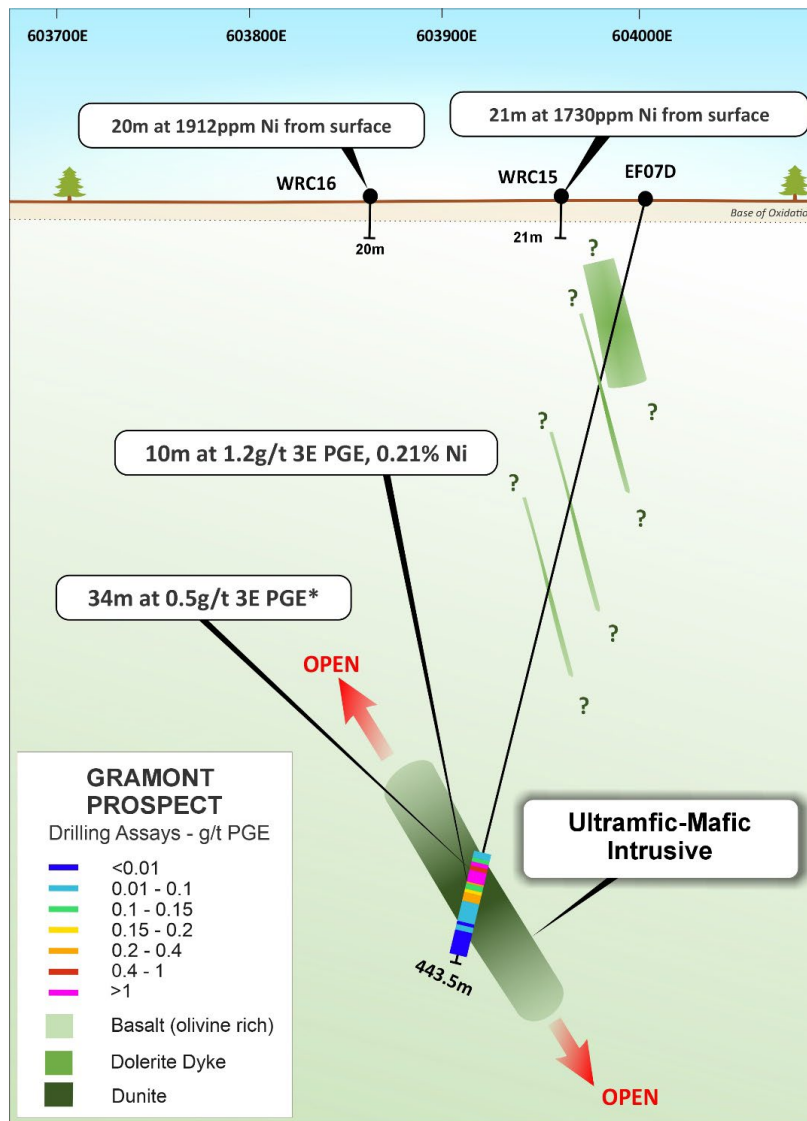
- Their value, rarity and strategic importance underpin the value for shareholders

Shareholders are exposed to cutting edge AI

- Strong potential to make further discoveries

Further drilling planned

- Upcoming drilling to test the system



Disseminated interstitial Ni-Cu-Fe sulphides and photomicrograph (field of view 1mm across) of the mineralisation (composed of bronze pentlandite, yellow chalcopyrite and brown pyrrhotite).



ASX: LGM

Note: references on this slide are in the Appendix – Endnotes on Slides 22-24

Glenlogan

A Tier-1 Cu-Au porphyry target



Targeting a Copper-Gold Porphyry Giant

Partnership with S2 Resources

Tier-1 Cadia-style porphyry target

- Planning underway for testing the target in 2024

Rio Tinto did not drill test

- Rio Tinto last held in the ground in 1994 and did not drill test the target due to modelled target depth of 800m¹

Modern geophysical breakthrough

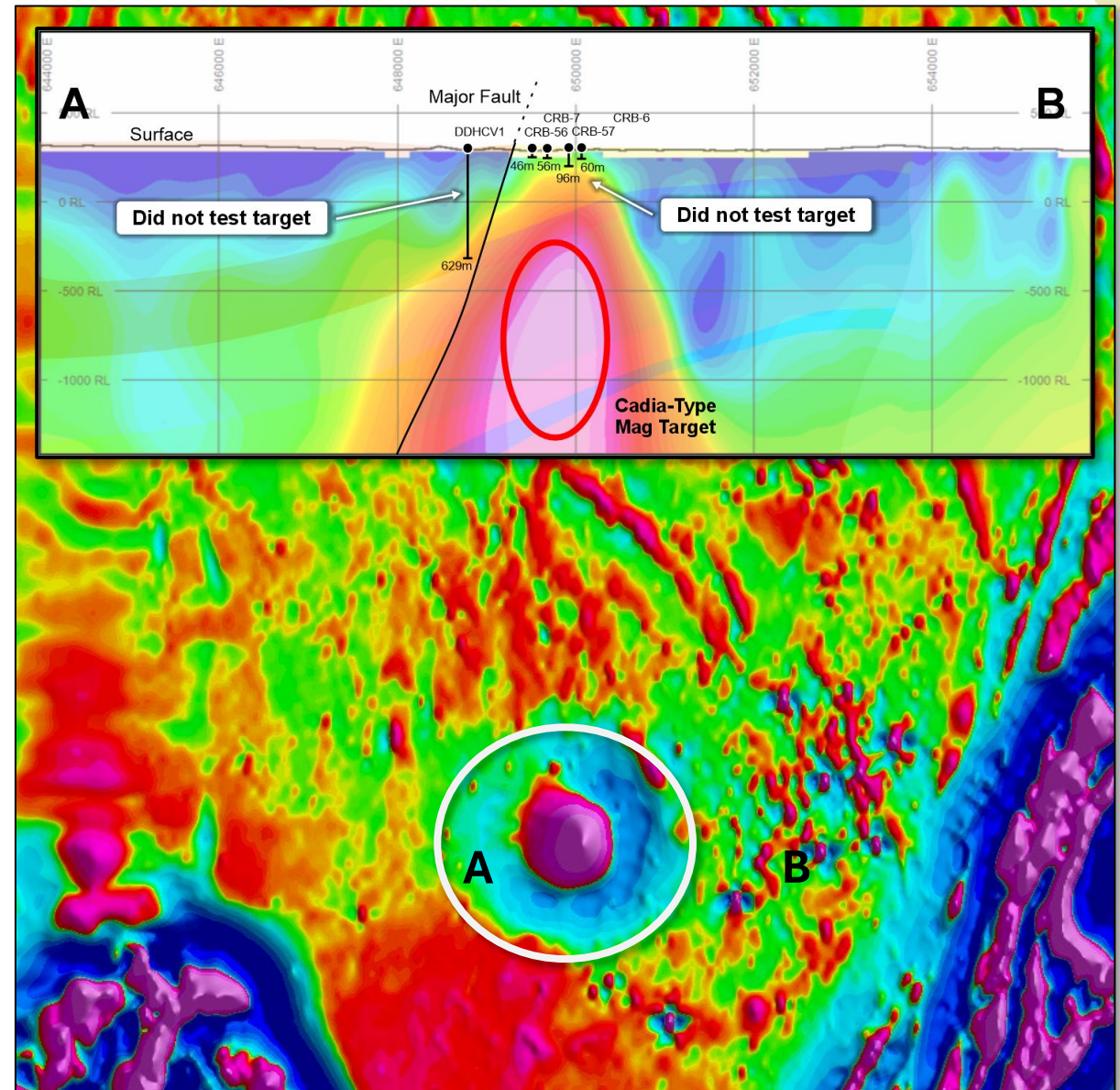
- Modern technology has shown the target is much shallower than previously thought (~500m), and well within economic mining depths²

Significant stake retained by LGM

- LGM may contribute or dilute from 30% ownership
- Option to have a 20% interest loan carried to production²

Partnership with a quality exploration company

- S2 Resources led by Dr Mark Bennet with by Mark Creasy as major shareholder



ASX: LGM

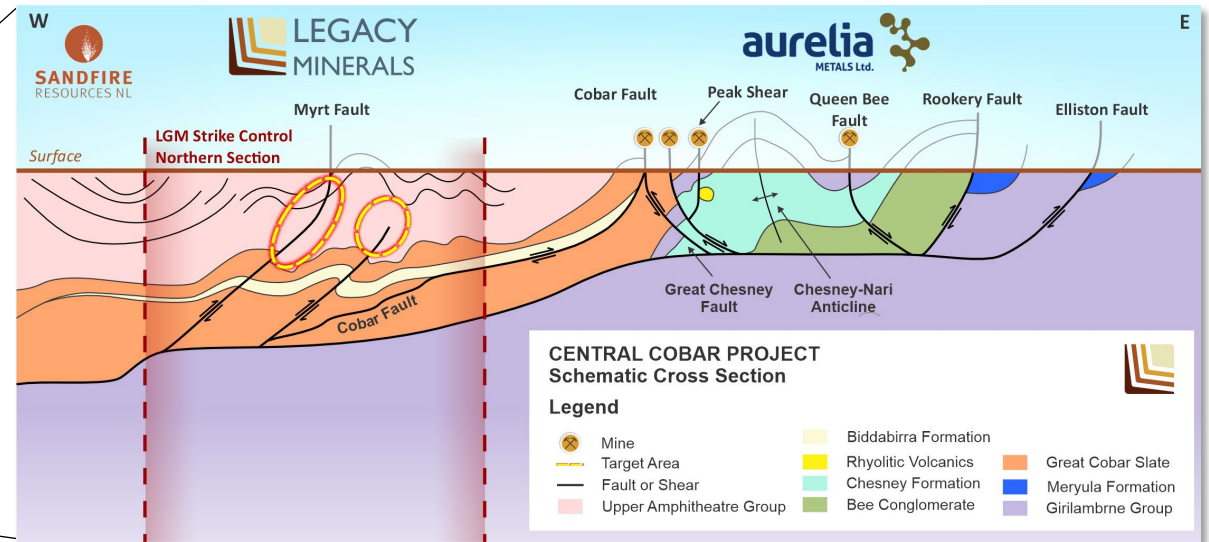
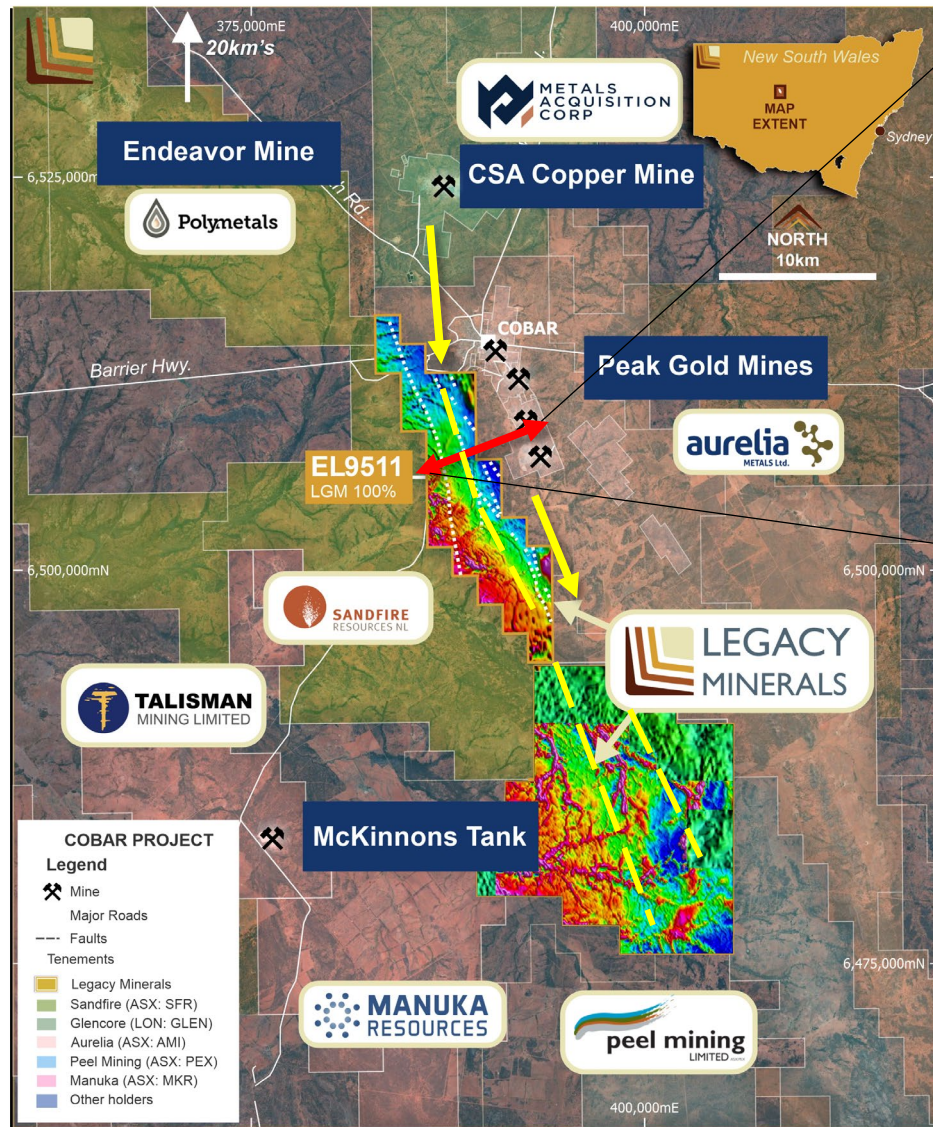
Note: references on this slide are in the Appendix – Endnotes on Slides 22-24

Cobar

Prime position in a prolific mining district



Untested Ground in the Heart of Cobar



Untested exploration search space along strike of world class mines

- Along strike of the Peak Gold Mine Corridor (Aurelia, ASX)
- Along strike of the CSA Mine (Metals Acquisition Corp, ASX)
- Modern exploration including AEM, airborne mag and rad, systematic soil sampling has resulted in numerous high value, and untested targets
- Model based off an NSW Gov interpretation that the western margins of the Peak Corridor has structural complexity and potential for magmatic fluid pathways that form many Cobar-Type deposits¹
- **Exploration programs underway**



ASX: LGM

Note: references on this slide are in the Appendix – Endnotes on Slides 22-24

Drake

Extensive Underexplored Cu-Au mineral system



Unlocking a massive Gold-Copper system

'Legacy' project with new exploration vision and approach

- Historical focus on mining has left behind great targets

An untested copper opportunity

- **Extensive copper oxide potential across several kilometers**
- Porphyry 'smoke' but yet to be found:
 - Porphyry D Veins intercepted in drilling and mapped at surface

What's Legacy Minerals Strategy?

- A holistic district scale approach that will utilise modern technology

Transaction

\$190k unencumbered sale from White Rock Resources (WRM)²

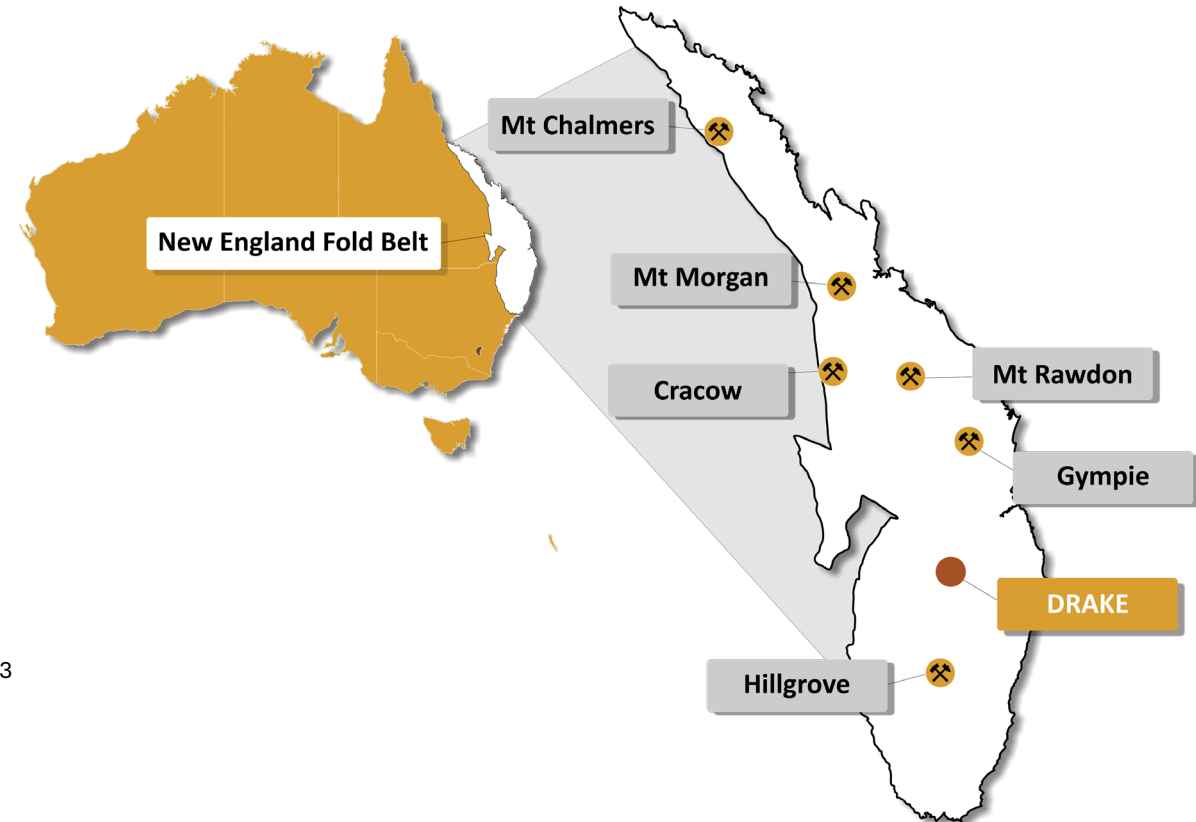
- **Estimated \$20-30M in project expenditure** by previous companies
- Represents a transaction valuer

Resources

- Exploration License Application and Exploration Licences Resource
 - 320kOz Au and 23Moz Ag of resources in existing open pit mines³

Significant project scale compared to global systems

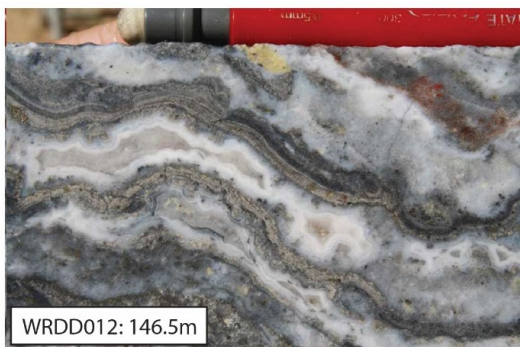
- Prospective for epithermal and porphyry deposits
- Similar features to world class deposits such as Porgera, PNG⁴



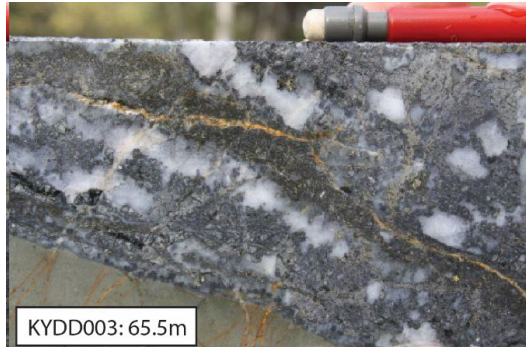
ASX: LGM

Extensive high-grades demonstrate potential

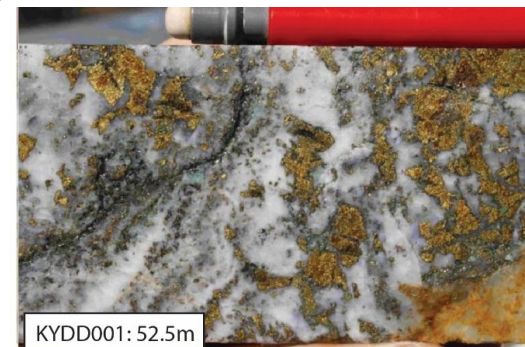
Why we are here: right grades and right textures



WRDD012: 146.5m



KYDD003: 65.5m



KYDD001: 52.5m

Porphyry D-vein

Examples of epithermal vein textures from drill holes KYDD003 at 65.5m, WRDD012 at 120m and 146.5m and interpreted porphyry D-veins in KYDD001 at 52.5m (Comments on Exploration at the Drake Project, Corbett Geological Consulting)

- **12.82m at 48g/t Au and 2,589g/t Ag, including 6.88m at 82g/t Au, 3,355g/t Ag with 3.78m of core loss (DDH006)**¹

From (m)	To (m)	Interval (m)	Au (g/t)	Ag (g/t)
18.19	19.51	1.32	24.05	5,033
19.51	22.86	3.35	Core loss	
22.86	23.77	0.91	230.58	9,081
23.77	24	0.23	Core loss	
24	25.53	1.53	123.37	4,691

- **8m at 16.92g/t Au, 17g/t Ag, 0.53% Cu, 1.45% Pb and 6.89% Zn, from 52m** (NOT IN RESOURCE) (RED003)¹
- **118m at 1.71g/t Au, 6.9g/t Ag, 0.1%Cu and 1.12% Zn from 2m** (KYDD003)²
- **16m at 5.8% Cu from 58m and 10.1m at 7.26% Cu from 88m** (NOT IN RESOURCE) (KYDD001)³
- **26.5m at 220g/t Ag and 0.1g/t Au from 133.3m** (MODD004)⁴

Investment Case

At the forefront of discovery

1. Multiple share price catalysts

- **Actively drilling** with three more upcoming drill campaigns in the next 6 months

2. Undervalued compared to peer comparisons

- Sub \$20M market cap. presents significant growth opportunities

3. Focused on gold and copper

- Strong macro market thematics

4. Projects backed by Tier 1 Partners

- Partnered with serially successful people and companies who have a track record of making and monetising discoveries, and successful mining operations

5. Clear strategy to deliver shareholder value

- 100% ownership of projects give shareholders direct upside to discoveries & partnerships minimise dilution and financing risk

6. Cash in bank and joint venture funding to deliver strategy



Bauloora Project, Mee Mar Prospect drill core (Newmont Farm-in Joint Venture)



ASX: LGM

Christopher Byrne *CEO and Managing Director*
chris.byrne@legacyminerals.com.au +61 (0) 499 527 547

Appendices – Endnotes

Slide 3, Slide 8, Slide 11 1 Alkane Resources Kaiser Resource Estimate of ~4.7M Gold Equivalent 27 February 2023; 2 Silver Mines, Ord Minnett East coast Mining Conference, March 2023; 3 Alkane Resource and Reserve Statement FY22, 9 September 2022; 4 Newcrest Mining Annual Mineral Resources and Ore Reserves Statement 17 February 2022; 5 Sandfire Resources NL 2019 Annual Report ; 6 Regis Resources Annual Mineral Resource and Ore Reserve Statement 8 June 2022; 7 CMOC Northparkes Mining and Technical Information; 8 Evolution Mining 2022 Annual Report

Project & Company	Mineral Resource	Measured Resource	Indicated Resource	Inferred Resource
Boda-Kaiser, NSW (Alkane Resources Ltd)	7.26Moz Au, 1.38Mt Cu	-	-	7.26Moz Au, 1.38Mt Cu
Tomingley, NSW (Alkane Resources Ltd)	1.75Moz Au	0.13M Au	1.019Moz Au	0.59Moz
McPhillamys, NSW (Regis Resources Ltd)	2.29Moz Au	-	2.28Moz Au	0.001Moz Au
Cadia and Ridgeway, NSW (2023) (Newmont Corporation)	35Moz Au, 7.9Mt Cu	0.30Moz Au, 0.041Mt Cu	30.98Moz Au, 6.97Mt Cu	4.06Moz, 0.91Mt Cu
Cowal, NSW (Evolution Mining Limited)	9.618Moz Au	0.367Moz Au	7.33Moz Au	1.92Moz Au
Nth Parkes, NSW (CMOC Mining Pty Ltd)	3.09Moz Au, 2.63Mt Cu	1.64Moz Au, 1.2Mt Cu	1.1Moz Au, 1.1Mt Cu	0.35Moz Au, 0.33Mt Cu

Mineral Equivalents:

Bowdens: Calculations have been rounded to the nearest 100,000 t, 0.1 g/t silver and 0.01% zinc and lead grades respectively. The Ore Reserve is reported by economic cut-off grade with appropriate consideration of modifying factors including costs, geotechnical considerations, mining and process recoveries and metal pricing. Bowdens' silver equivalent: $\text{Ag Eq (g/t)} = \text{Ag (g/t)} + 33.48 * \text{Pb (\%)} + 49.61 * \text{Zn (\%)} + 80 * \text{Au (g/t)}$ calculated from prices of US\$20/oz silver, US\$1.50/lb zinc, US\$1.00/lb lead, US\$1600/oz gold and metallurgical recoveries of 85% silver, 82% zinc, 83% lead and 85% gold estimated from test work commissioned by Silver Mines Limited (Silver Mines, Ord Minnett East coast Mining Conference, March 2023)



Appendices – Endnotes (continued)

Slide 6: 1 Greatland Gold, greatlandgold.com/wp-content/uploads/2023/08/2023.08.07-Greatland-Diggers-Dealers-Presentation.pdf, greatlandgold.com/wp-content/uploads/2022/09/22092022-GGP-Corporate-Update-Sep-2022-vfinal.pdf 2: ASX LGM: 5 April 2023 Newmont Farm-in at Bauloora Project

Slide 8: 1: 1992 Newcrest Mining Limited (R00001533) License 3137 Goondah

Slide 9: 1 ASX LGM: 23 October 2023 Large 2.2km Long Gold Anomaly defined at Black Range, 2 ASX LGM: 11 October 2023 Widespread Silica Sinter Confirmed at Black Range. ASX LGM: 1 NOV 2023 High Conviction Drill Targets Defined at Black Range

Slide 11: 1: ASX LGM: 5 April 2023 Newmont Farm-in at Bauloora Project, ASX LGM 2: ASX LGM 27 April 2023 Exploration underway at new low-sulphidation epithermal, NSW, 2: ASX LGM: 16 June 2022 High-Grade Silver, Gold Drill Results, Met-Testing Underway, Legacy Minerals Prospectus, dated 28 July 2021, ASX LGM: 10 May 2023 Drilling Assays Confirm New Epithermal Discovery at Bauloora, ASX LGM: 21 November New High-Grade Gold Assays Returned Across Bauloora

Slide 13: 1: ASX LGM 26 February 2024 Artificial Intelligence makes Magmatic PGE-Ni-Cu Discovery, 2: ASX LGM IGO Ltd, <https://www.igo.com.au/site/operations/nova> 3: Chalice Mining Limited, <https://chalicemining.com/gonneville/>, 3: ASX LGM 3 May 2022 Strategic Exploration Alliance with AI Explorer

Slide 15: 1: Rio Tinto Exploration Pty. Limited, EL5226 Cowra 8 Final Report Bathurst SI55-08 NSW, Australia, October 1997, 1: ASX 9 November 2023 Major Untested Porphyry Cu-Au Target Defined at New Project

Slide 17: 1: QN 148 - Metamorphism in the Cobar Basin, NSW Geological Survey

Slide 19: 1 ASX WRM: 24 October 2022 High Grade Copper Target Identified at Mt Carrington, 2 ASX LGM: 20 July 2023 Acquisition of District Scale Copper-Gold Epithermal Project, 3:, 4: World Gold, Pacific Rim Epithermal https://corbettgeology.com/wp-content/uploads/2016/07/corbett_pacific_rim_epithermal_au.pdf

Slide 20: 1: ASX TMZ Release: 24 Oct 2022, High-Grade Copper Target Identified at Mt Carrington Six Annual Report for Period Ending September 15 2: 1992 EL 2662 (Drake) R00000410, CRAE 3: Prospectus is issued by White Rock Minerals Ltd (“White Rock”) dated 20 August 2010, ASX TMZ Release: 24 October 2022, High Grade Copper Target at Mt Carrington, 4: ASX WRM Release: 14 September 2012, Annual Report to shareholders



Appendices – Endnotes (continued)

Drake Mineral Resource Estimate as at 26 March 2024

Deposit	Resource Classification	Grade					Metal			
		Tonnes (Mt)	Au (g/t)	Ag (g/t)	Zn (%)	Cu (%)	Au (koz)	Ag (koz)	Zn (kt)	Cu (kt)
Strauss (ELA)	Indicated (JORC 2012)	2.2	1.48	1.74	0.49	0.08	105	123	10.7	1.7
	Inferred (JORC 2012)	1.36	0.69	1.81	0.33	0.06	30	79	4.4	0.9
Kylo (ELA)	Indicated (JORC 2012)	2.14	1.25	1.35	0.19	0.04	86	93	4.1	0.8
	Inferred (JORC 2012)	0.3	0.41	1.17	0.18	0.05	4	11	0.5	0.1
Sub-Total		6	1.17	1.59	0.33	0.06	225	306	19.8	3.5
Red Rock (ELA)	Inferred (JORC 2004)	1.63	1.6	2.2			54	182		
Guy Bell (ELA)	Inferred (JORC 2004)	0.16	2.5	4.9			13	24		
Sub-Total		1.79	1.2	3.6			67	206		
Lady Hampden	Indicated (JORC 2004)	1.84	0.6	69			37	4056		
	Inferred (JORC 2004)	2.47	0.3	51			27	4023		
White Rock (ELA)	Indicated (JORC 2004)	1.71		77				4214		
	Inferred (JORC 2004)	2.66		47				3978		
White Rock North (EL)	Inferred (JORC 2004)	3.18		52				5314		
Silver King (ELA)	Inferred (JORC 2004)	0.64		59				1218		
Sub-Total		8.95	0.1	51			64	22803		
Total (JORC 2012 + JORC 2004)		16.74					356	23315		

The Strauss and Kylo Mineral Resources have been estimated using a gold cut-off of 0.3g/t Au and 25g/t Ag, 0.1% Cu, 0.1% Pb, and 0.1% Znⁱⁱ. The Guy Bell Mineral Resource has been estimated using a cut-off of 0.5g/t Au and Red Rock has been estimated using a 0.7g/t Au cut-off. Silver dominant Mineral Resources (Lady Hampden, White Rock, White Rock North, and Silver King) have been estimated using a cut-off of 25g/t Ag. The Red Rock, Guy Bell, Lady Hampden, White Rock, White Rock North, and Silver King Mineral Resources was prepared and reported in accordance with the JORC Code (2004). The Resources figures have not been updated since to comply with the JORC Code 2012 on the basis that the information has not materially changed since it was last reportedⁱⁱⁱ.

