

<b>Deal Name:</b>	<b>Driver Australia Seven</b>
<b>Issuer:</b>	Perpetual Corporate Trust Limited (ABN 99 000 341 533) of Level 18, 123 Pitt Street, Sydney NSW 2000 Australia in its capacity as trustee of the Driver Australia Seven Trust.
<b>Originator of the Receivables:</b>	Volkswagen Financial Services Australia Pty Ltd
<b>Seller of the Receivables:</b>	Volkswagen Financial Services Australia Pty Ltd
<b>Servicer name:</b>	Volkswagen Financial Services Australia Pty Ltd
<b>Reporting Entity:</b>	Volkswagen Financial Services Australia Pty Ltd ABS Operations (Physical Address) Level 1, 24 Muir Road, Chullora NSW 2190 (Postal Address) Locked Bag 4002 Chullora NSW 2190
<b>Contact:</b>	Phone: +61 2 9751 6257 Fax: +61 2 9695 6399 Email: ABSOperations.Australia@vwfs.com.au
<b>Corporate Service Provider:</b>	Perpetual Corporate Trust Limited (ABN 99 000 341 533) of Level 18, 123 Pitt Street, Sydney NSW 2000 Australia in its personal capacity.



## Contents

Page	Table of Contents
1	<a href="#">Cover</a>
2	<a href="#">Contents</a>
3	<a href="#">Reporting Details</a>
4	<a href="#">Parties Overview</a>
5	<a href="#">Transaction Events I</a>
6	<a href="#">Transaction Events II</a>
7	<a href="#">Transaction Events III</a>
8	<a href="#">Information regarding the Notes I</a>
9	<a href="#">Information regarding the Notes II</a>
10	<a href="#">Cash Collateral Account</a>
11	<a href="#">Credit Enhancement</a>
12	<a href="#">Swap Fixing / Waterfall</a>
13	<a href="#">Retention of Net Economic Interest</a>
14	<a href="#">Amortisation Profile I</a>
15	<a href="#">Amortisation Profile II</a>
16	<a href="#">Run Out Schedule I</a>
18	<a href="#">Run Out Schedule II</a>
19	<a href="#">Outstanding Contracts I</a>
21	<a href="#">Outstanding Contracts II</a>
22	<a href="#">Arrears</a>
24	<a href="#">Net Salvage Loss</a>
25	<a href="#">Net Salvage After Recoveries</a>
26	<a href="#">Prepayments</a>
27	<a href="#">Pool Data I</a>
29	<a href="#">Pool Data II</a>
30	<a href="#">Pool Data III</a>
32	<a href="#">Pool Data IV</a>
34	<a href="#">Pool Data V</a>
36	<a href="#">Pool Data VI</a>
37	<a href="#">Pool Data VII</a>
43	<a href="#">Pool Data VIII</a>
45	<a href="#">Pool Data IX</a>
47	<a href="#">Hardship Extensions</a>
48	<a href="#">Engine Type</a>
50	<a href="#">Contract Level Data</a>

## Reporting Details

### Deal Overview

Pool Cut Date	31/10/2021	Publication Date:	16/02/2023 (16th of each month)
Scheduled Date of Clean-Up-Call	10/2025	Payment Date:	21/02/2023 (21st of each month)
Legal Maturity Date	21/01/2030	Reporting Date:	31/01/2023
Issue Date	22/11/2021	Asset Collection Period:	from 01/01/2023 until 31/01/2023
Period No.:	15	Interest Accrual Period	from 23/01/2023 until 21/02/2023
Reporting frequency:	Monthly	Note Payment Period:	from 23/01/2023 until 21/02/2023
Next Payment Date:	21/03/2023	Days accrued:	29

Vehicle Type at Pool Cut	Number of Contracts	Percentage of Contracts	Outstanding Discounted Receivables Balance	Percentage Outstanding Discounted Receivables Balance
New	10,680	70.07%	463,158,976.27 AUD	77.19%
Used	4,561	29.93%	136,866,121.79 AUD	22.81%
<b>Total</b>	<b>15,241</b>	<b>100.00%</b>	<b>600,025,098.06 AUD</b>	<b>100.00%</b>

Credit Type at Pool Cut	Number of Contracts	Percentage of Contracts	Outstanding Discounted Receivables Balance	Percentage Outstanding Discounted Receivables Balance
Chattel Mortgage	9,371	61.49%	414,965,143.56 AUD	69.16%
Consumer Loan	5,870	38.51%	185,059,954.50 AUD	30.84%
<b>Total</b>	<b>15,241</b>	<b>100.00%</b>	<b>600,025,098.06 AUD</b>	<b>100.00%</b>

## Parties Overview

<b>Lead Managers:</b>	<p><b>Australia and New Zealand Banking Group Limited</b> <b>(ABN 11 005 357 522)</b> ANZ Tower 242 Pitt Street Sydney, NSW 2000 Australia</p> <p><b>Bank of America Merrill Lynch (which is the trading name of Merrill Lynch International)</b> <b>(ARBN 125 336 567)</b> Merrill Lynch Financial Centre 2 King Edward Street London EC1A 1HQ United Kingdom</p>	<b>Security Trustee:</b>	<p><b>P.T. Limited</b> <b>(ABN 67 004 454 666)</b> Level 18 123 Pitt Street Sydney NSW 2000 Australia</p>
<b>Trustee:</b>	<p><b>Perpetual Corporate Trust Limited</b> <b>(ABN 99 000 341 533)</b> of Level 18, 123 Pitt Street, Sydney NSW 2000 Australia in its capacity as trustee of the Driver Australia Seven Trust.</p>	<b>Trust Manager:</b>	<p><b>Perpetual Nominees Limited</b> <b>(ABN 37 000 733 700)</b> of Level 18, 123 Pitt Street, Sydney NSW 2000 Australia in its capacity as the trust manager for the Driver Australia Seven Trust</p>
<b>Sub Trust Manager:</b>	<p><b>Volkswagen Financial Services Australia Pty Limited</b> <b>(ABN 20 097 071 460)</b> Level 1, 24 Muir Road, Chullora, NSW 2190</p>	<b>Account Bank:</b>	<p><b>Australia and New Zealand Banking Group Limited</b> <b>(ABN 11 005 357 522)</b> ANZ Tower 242 Pitt Street Sydney, NSW 2000 Australia</p>
<b>Clearing Systems:</b>	<p><b>Austraclear Limited</b> 30-32 Grosvenor Street. Sydney, NSW 2000</p>	<b>Swap Counterparty:</b>	<p><b>ING Bank N.V.</b> <b>(ID 26 300 892 I)</b> Bijlmerdreef 106 1102 CT Amsterdam The Netherlands</p>
<b>Servicer:</b>	<p><b>Volkswagen Financial Services Australia Pty Limited</b> <b>(ABN 20 097 071 460)</b> Level 1, 24 Muir Road, Chullora, NSW 2190 email: ABSOperations.Australia@vwfs.com.au phone: +61 2 9751 6257</p>	<b>Rating Agencies:</b>	<p><b>Fitch Ratings</b> Attn.: Australia Surveillance Suite 15.01, Level 15, 135 King Street Sydney, NSW 2000 Australia email: australia.surveillance@fitchratings.com</p> <p><b>Moody's</b> Attn.: Monitor Sydney Level 10, 1 O'Connell Street Sydney, NSW 2000 Australia email: Monitor.Sydney@moodys.com</p>

## Transaction Events (I)

### Clean-Up Call Condition

Percentage of Current Outstanding Discounted Receivables Balance	62.07%	The Clean-Up-Call Condition is expected to be reached in 10/2025.
Min. Percentage of Outstanding Discounted Receivables Balance	10.00%	

### Clean-Up Call

VWFS Australia will have the right at its option to exercise a Clean-Up Call and to repurchase all (but not only some) of the Purchased Receivables from the Issuer at any time when the then outstanding Aggregate Discounted Receivables Balance is less than ten (10) per cent. of the Aggregate Cut-off Date Discounted Receivables Balance and, assuming the Transaction Documents are given full effect, all payment obligations under the Notes, including principal and accrued interest, will thereby be fulfilled in accordance with the Order of Priority (the Clean-up Call Conditions).

Repurchase of Receivables	Number of contracts	% of Contracts	Outstanding Discounted Receivables Balance	% of Outstanding Discounted Receivables Balance	Interest Compensation Payment	Re-Purchase Price
Current Period	-	0.00%	- AUD	0.00%	- AUD	- AUD
Previous Periods	-	0.00%	- AUD	0.00%	- AUD	- AUD
<b>Total</b>	-	0.00%	- AUD	0.00%	- AUD	- AUD

If a repurchase of receivables occurred, it would only result from non-eligibility as of the respective Pool Cut Date (which has been discovered at a later stage), a Legitimate Repudiation of a Receivables Contract, a Reloaded Contract or a Flat-Cancelled Contract.

### Transaction Party Replacements

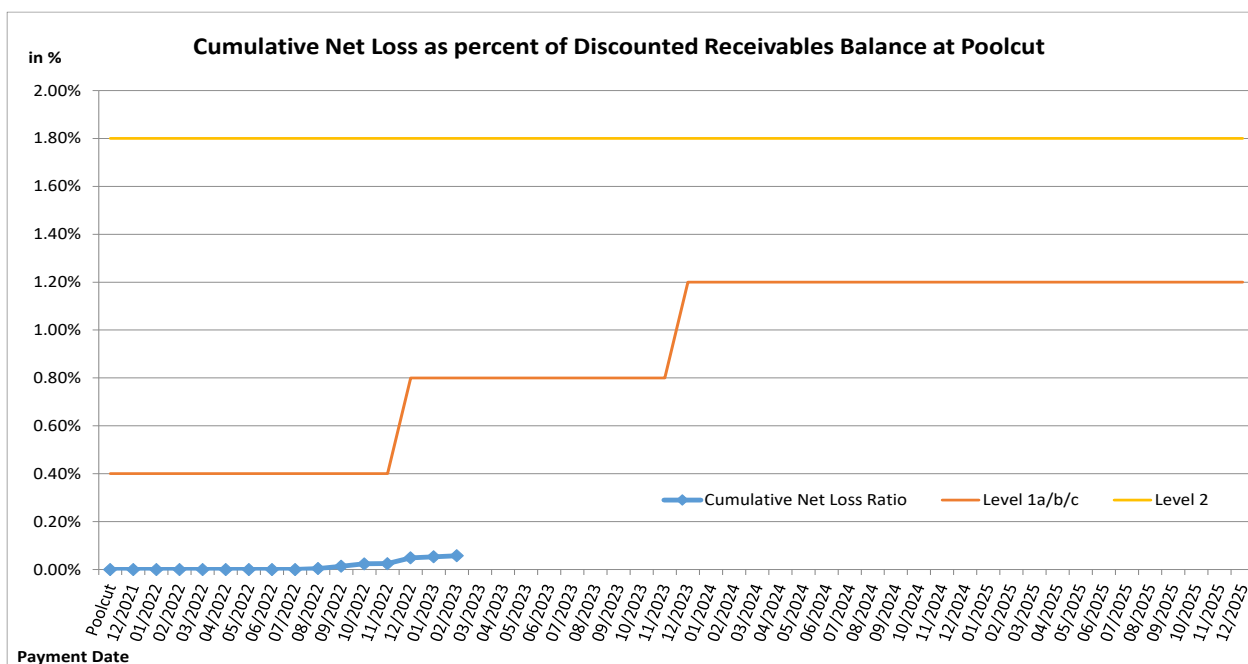
Capacity of Transaction Party	Date of Replacement	Reason for Replacement	Replaced Party	Replaced by

## Transaction Events (II)

### Credit Enhancement Increase Conditions

Level 1a Credit Enhancement Increase Condition - Cumulative Net Losses do not amount to 0.4% for any Payment Date prior to or during Nov 2022	NO
Level 1b Credit Enhancement Increase Condition - Cumulative Net Losses do not amount to 0.8% for any Payment Date from Dec 2022 but prior to or during Nov 2023	NO
Level 1c Credit Enhancement Increase Condition - Cumulative Net Losses do not amount to 1.2% for any Payment Date after Nov 2023	NO
Level 2 Credit Enhancement Increase Condition - Cumulative Net Losses do not amount to 1.8% for any Payment Date	NO

Net losses	Net Loss Amount
Net Salvage Loss registered in current Period	25,455.90 AUD
Cumulative Net Salvage Loss incl. current Period	343,816.87 AUD
Cumulative Net Salvage Loss as of the End of the Monthly Period	343,816.87 AUD
Discounted Balance as of Pool Cut Date	600,025,098.06 AUD
Cumulative Net Loss as percentage of Discounted Receivables Balance at Pool Cut	0.05730%



## Transaction Events (III)

### Account Bank:

Australia and New Zealand Banking Group Limited

Current Rating<sup>\*</sup>

Minimum required Rating (if no short term Rating available, the higher long term rating is applicable)

or

Fitch			Moody's		
Long Term	Short Term	Outlook	Long Term	Short Term	Outlook
A+	F1	Stable	Aa3	P-1	Stable
-	F1	-	A2	P-1	-
A	-	-	A2	P-1	-

If the Account Bank ceases to have the Account Bank Required Rating it shall, at its own cost,

(i) transfer the accounts to an Eligible Collateral Bank, or

(ii) provide a guarantee from an Eligible Guarantor, or

If none of the measures is taken within a given timespan, the Issuer may enter into new banking arrangements at its own initiative with another Account Bank.

(Please refer to the Prospectus for a complete description of the mechanism)

Required Rating:

**Fulfilled**

### Swap Counterparty

ING Bank N.V.

Current Rating<sup>\*</sup>

Minimum required Rating for Class A Notes

Minimum required Rating for Class B Notes

Fitch			Moody's		
Long Term	Short Term	Outlook	Long Term	Short Term	Outlook
AA-	F1+	Stable	A1	P-1	Stable
A	F1	-	A3	-	-
-	-	-	A3	-	-

If the Swap Bank falls below the above mentioned Minimum Rating (Level I) it shall provide Eligible Credit Support by means of Cash or certain types of Prime Debt Obligations

If the Swap Bank ceases to have the even lower Rating as an Eligible Swap Counterparty (Level II) it shall, at its own cost,

(i) transfer all rights and obligations under the Swap Agreement to another Eligible Swap Partner or

(ii) provide a guarantee from an Eligible Guarantor.

If none of the measures is taken within a given timespan, the Issuer may enter into new arrangements at its own initiative with another Swap Bank.

(Please refer to the Prospectus for a complete description of the mechanism)

Required Rating:

**Fulfilled**

### Servicer

Volkswagen Financial Services Australia Pty Ltd

If the Monthly Remittance Condition is satisfied, VWFS Australia, as the Servicer, is required to pay collections of the Purchased Receivables (including proceeds from the disposition of any Financed Objects) received by it during each Monthly Period into the Distribution Account in a single deposit no later than the Payment Date for that Monthly Period.

If the Monthly Remittance Condition is not met, the Servicer must remit collections received by it in respect of the Purchased Receivables in accordance with the procedure outlined in detail in "ADMINISTRATION OF THE PURCHASED RECEIVABLES UNDER THE SERVICING AGREEMENT - Commingling".

Monthly  
Remittance  
Condition:

**Fulfilled**

#### Information regarding the Notes I

Rating at Issue Date	Class A	Class B
Moody's	Aaa (sf)	Aa2 (sf)
Fitch	AAAsf	NRsf

Current Rating	Class A	Class B
Moody's	Aaa (sf)	Aa1 (sf)
Fitch	AAAsf	NRsf

Information on Notes	Class A	Class B
Legal maturity date	21/01/2030	21/01/2030
Scheduled Clean Up Call	Oct 2025	Oct 2025
ISIN:	AU3FN0063434	AU3FN0063442
Common Code:	239718256	239718272
Nominal Amount	100,000.00 AUD	100,000.00 AUD

Information on Interest	Class A	Class B
Spread/ Margin	70 bps	100 bps
Index Rate	1-Month-BBSW	1-Month-BBSW
Fixed/Floating	floating	floating
Current Coupon	1-Month-BBSW + 70	1-Month-BBSW + 100
Day Count Convention	actual/365	actual/365



## Information regarding the Notes II

Monthly Period:	01/2023
Payment Date:	21/02/2023
Interest Accrual Period (from/until)	from 23/01/2023 until 21/02/2023
Days accrued	29
Index Rate	1-Month-BBSW
Base Interest Rate:	3.1183%
Day Count Convention	actual/365

Interest Payments	Class A	Class B
Total Interest Amount of the Reporting Period	935,895.59 AUD	107,978.44 AUD
Paid Interest	935,895.59 AUD	107,978.44 AUD

Unpaid Interest	Class A	Class B
Unpaid Interest in the Reporting Period	- AUD	- AUD
Cumulative unpaid Interest	- AUD	- AUD

Note Balance	Class A	Class B
Note Balance as of Poolcut	526,200,000.00 AUD	33,000,000.00 AUD
Note Balance as of the Beginning of the Period	308,497,905.00 AUD	33,000,000.00 AUD
Redemption Amount per Class	13,466,299.92 AUD	- AUD
<b>Class Balance as of the End of the Period</b>	<b>295,031,605.08 AUD</b>	<b>33,000,000.00 AUD</b>

Payments to Investors per note	Class A	Class B
Interest Per Note	177.86 AUD	327.21 AUD
Principal Repayment by note	2,559.16 AUD	- AUD
Number of Notes	5,262	330
Note Factor	0.5606834	1.0000000

Overcollateralisation Percentage	Class A	Class B
Initial OC Percentage at Poolcut	12.3037%	6.8039%
Current OC Percentage	20.7900%	11.9300%
Target OC Percentage	26.0000%	18.0000%

Subordinated Loan	
Balance as of the Beginning of the Period	34,115,247.75 AUD
Regular Redemption from Waterfall	- AUD
Redemption from Cash Collateral Account	- AUD
Balance as of the End of the Period	34,115,247.75 AUD

## Cash Collateral Account

Cash collateral account (CCA)	Value
<b>CCA Opening Balance - Initial balance at poolcut</b>	<b>7,200,000.00 AUD</b>
<b>Balance as of the beginning of the period</b>	<b>6,000,000.00 AUD</b>
<b>Specified General Cash Collateral Account Balance</b>	<b>6,000,000.00 AUD</b>
the greater of: 1.20 per cent of the Aggregate Discounted Receivables Balance as of the end of the Monthly Period; and	4,469,585.39 AUD
the lesser of: \$6,000,000; and	6,000,000.00 AUD
the aggregate outstanding principal amount of the Class A Notes and Class B Notes as of the end of the Monthly Period	341,497,905.00 AUD
<b>Payments</b>	<b>- AUD</b>
General payment from CCA	- AUD
General payment to CCA	- AUD
<b>Balance as of the end of the period</b>	<b>6,000,000.00 AUD</b>

## Credit Enhancement

Credit Enhancement as of Poolcut Date	% of Aggregate Discounted Receivables Balance	Value
Class B Note	5.50%	33,000,000.00 AUD
Subordinated Loan	5.80%	34,825,098.06 AUD
Overcollateralisation	1.00%	6,000,000.00 AUD
Cash Collateral Account	1.20%	7,200,000.00 AUD

Cash Collateral Account (CCA)	Value	in % of Outstanding Discounted Receivables Balance as of Poolcut Date
Initial Balance at Poolcut	7,200,000.00 AUD	1.20%
Initial Targeted Balance at Poolcut	7,200,000.00 AUD	1.20%
Current Targeted Balance	6,000,000.00 AUD	1.00%
Balance as of the Beginning of the Period	6,000,000.00 AUD	1.00%
Payment from CCA	- AUD	0.00%
Payment to CCA	- AUD	0.00%
Balance as of the End of the Period	6,000,000.00 AUD	1.00%

## Calculation of Credit Enhancement

Initially, Driver Australia Seven's Credit Enhancement consists of the respective Note Issue in comparison to the Discounted Receivables Balance as of Poolcut, minus any Senior Debt Issuance. This 'Overcollateralisation' (i.e. Credit Enhancement excluding the Cash Collateral Account) is specific for each Note Series and increases with its seniority.

Subsequently, the 'Overcollateralisation' is calculated (as an Overcollateralisation Percentage) on a monthly basis, all on end of month figures. Considering the seniority of the respective Note Series, redemption is made until a Target Overcollateralisation Percentage has been reached. All remaining funds will be used to perform payments in the more junior positions of the Order of Priority.

The Target OC percentages for each Note Class are determined subject to 3 items:

- They will increase in 2 steps in case the Cumulative Net Loss Ratio exceeds a certain level and Credit Enhancement Increase Condition is met.
- They will increase to 100% if the Aggregate Discounted Receivables Balance falls below 10.00% of the Aggregate Discounted Receivables Balance at Cut-Off Date (without a Clean-Up Call being exercised).
- A Foreclosure Event causes the transaction to switch into sequential payment mode, in which case the OC Percentages will not determine the maximum redemption amount and may be exceeded.

In addition, there is the 'General Cash Reserve', in the form of a Cash Collateral Account, which is in principle to the benefit of all Tranches over the entire lifetime of the transaction.

## Swap Fixing / Waterfall

Amortising Interest Rate Swap	Class A	Class B
Initial Principal	526,200,000.00 AUD	33,000,000.00 AUD
Underlying Principal for Reporting Period	308,497,905.00 AUD	33,000,000.00 AUD
Paying Leg	Fixed Interest Rate	Fixed Interest Rate
Receiving Leg	Floating Interest Rate	Floating Interest Rate
Net Swap Payments - Net Swap Receipts	(548,987.80 AUD)	(54,848.44 AUD)

Available Distribution Amount Calculation	Payment to waterfall position	Remaining Amount
1) i) Available Collections Amount from Contracts	15,155,211.44 AUD	15,155,211.44 AUD
1) ii) Available Collections - Interest on Trust Account	19,573.43 AUD	15,174,784.87 AUD
2) Drawings From Cash Collateral Account as provided for in clause 12.1 of the Issue Supplement	- AUD	15,174,784.87 AUD
3) i) Net Swap Receipts - Class A	548,987.80 AUD	15,723,772.67 AUD
3) ii) Net Swap Receipts - Class B	54,848.44 AUD	15,778,621.11 AUD
4) Damages and Indemnity Payments to Issuer	- AUD	15,778,621.11 AUD
5) Other Reimbursement Amounts	- AUD	15,778,621.11 AUD
6) Buffer Release Amount	(937,153.37 AUD)	14,841,467.74 AUD
Remaining Rounding Amount (M-1)	47.88 AUD	14,841,515.62 AUD

Waterfall	Payment to waterfall position	Remaining Amount
Available Distribution Amount	- AUD	14,841,515.62 AUD
1) Trust Beneficiary \$1	(1.00 AUD)	14,841,514.62 AUD
2) Taxes	- AUD	14,841,514.62 AUD
3) Trust Fees & Expenses and Servicer Fees	(331,335.10 AUD)	14,510,179.52 AUD
4. a) Net Swap Payments - Class A Notes	- AUD	14,510,179.52 AUD
4. b) Net Swap Payments - Class B Notes	- AUD	14,510,179.52 AUD
5. a) Interest accrued in prev. month - Class A	(935,895.59 AUD)	13,574,283.93 AUD
5. b) Interest Shortfalls from prior months - Class A	- AUD	13,574,283.93 AUD
6. a) Interest accrued in prev. month - Class B	(107,978.44 AUD)	13,466,305.49 AUD
6. b) Interest Shortfalls from prior months - Class B	- AUD	13,466,305.49 AUD
7) Payment to Cash Collateral Account	- AUD	13,466,305.49 AUD
8) Principal Payment - Class A	(13,466,299.92 AUD)	5.57 AUD
9) Principal Payment - Class B	- AUD	5.57 AUD
Remaining Rounding Amount (Current Period)	(5.57 AUD)	- AUD
10) Penalties, Costs, Expenses, Damages, Losses or Liabilities	- AUD	- AUD
11) Other Payment to Swap Counterparties	- AUD	- AUD
12) Subordinated Loan Accrued and Unpaid Interest	- AUD	- AUD
Interest Accrued this period on the Subordinated Loan	- AUD	- AUD
Unpaid Interest on the Subordinated Loan	- AUD	- AUD
13) Subordinated Loan Principal	- AUD	- AUD
14) Surplus Income Distribution to Beneficiary of the Trust	- AUD	- AUD

Distribution of Cash Collateral Account surplus	Payment	Remaining Amount
Payment from CCA	- AUD	- AUD
Payment of Interest Accrued this period on the Subordinated Loan	- AUD	- AUD
Payment of Unpaid Interest on the Subordinated Loan	- AUD	- AUD
Payment in respect of regular redemption to subordinated lender	- AUD	- AUD
Distribution to Beneficiary of the Trust	- AUD	- AUD

## Retention of Net Economic Interest

Period	Poolcut	Balance as at Current Period
<b>Total Assets</b>	<b>684,926,843.21 AUD</b>	<b>411,721,112.00 AUD</b>
Nominal Receivables Balance	684,926,843.21 AUD	411,721,112.00 AUD
<b>First loss piece</b>	<b>48,025,098.06 AUD</b>	<b>50,433,844.11 AUD</b>
Subordinated Loan balance	34,825,098.06 AUD	34,115,247.75 AUD
Overcollateralisation	6,000,000.00 AUD	10,318,596.36 AUD
General Cash Collateral Account balance	7,200,000.00 AUD	6,000,000.00 AUD
<b>Actual retention</b>	<b>7.01%</b>	<b>12.25%</b>

In its capacity as originator and original lender, VWFSA complies with the retention requirement of a material net economic interest in accordance with Article 6 (3) (d) of the European Securitisation Regulation.

By adhering to Article 6 (3) (d) of the European Securitisation Regulation, VWFSA will keep the exposures designated for retention on its balance sheet on an ongoing basis.

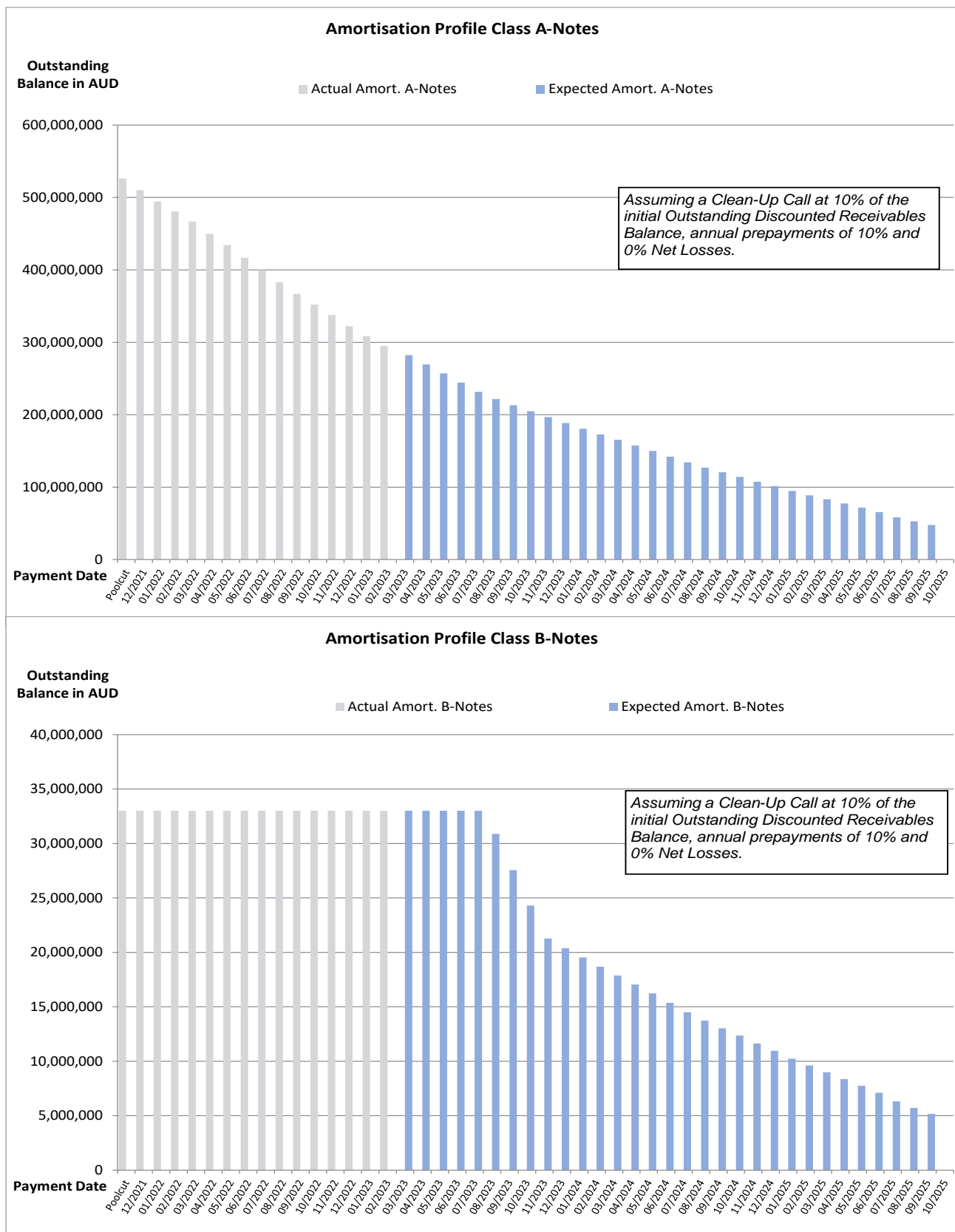
The latest end of month level of retention will be published on a monthly basis in the investor report.

## Amortisation Profile I

Note Class	Class A		Class B	
WAL	At Closing: 1.85 yrs	Current: 1.41 yrs	At Closing: 2.84 yrs	Current: 1.52 yrs
Payment Date	Actual Note Balance	Forecasted Note Balance	Actual Note Balance	Forecasted Note Balance
Poolcut	526,200,000.00 AUD	- AUD	33,000,000.00 AUD	- AUD
12/2021	510,049,185.54 AUD	- AUD	33,000,000.00 AUD	- AUD
01/2022	494,276,866.74 AUD	- AUD	33,000,000.00 AUD	- AUD
02/2022	480,766,050.30 AUD	- AUD	33,000,000.00 AUD	- AUD
03/2022	466,604,640.18 AUD	- AUD	33,000,000.00 AUD	- AUD
04/2022	449,793,707.82 AUD	- AUD	33,000,000.00 AUD	- AUD
05/2022	434,204,927.58 AUD	- AUD	33,000,000.00 AUD	- AUD
06/2022	416,766,133.38 AUD	- AUD	33,000,000.00 AUD	- AUD
07/2022	399,553,605.18 AUD	- AUD	33,000,000.00 AUD	- AUD
08/2022	382,999,405.80 AUD	- AUD	33,000,000.00 AUD	- AUD
09/2022	367,050,704.76 AUD	- AUD	33,000,000.00 AUD	- AUD
10/2022	352,075,000.14 AUD	- AUD	33,000,000.00 AUD	- AUD
11/2022	337,754,730.24 AUD	- AUD	33,000,000.00 AUD	- AUD
12/2022	322,389,374.52 AUD	- AUD	33,000,000.00 AUD	- AUD
01/2023	308,497,905.00 AUD	- AUD	33,000,000.00 AUD	- AUD
02/2023	295,031,605.08 AUD	- AUD	33,000,000.00 AUD	- AUD
03/2023	-	282,338,007.06 AUD	-	33,000,000.00 AUD
04/2023	-	269,496,207.27 AUD	-	33,000,000.00 AUD
05/2023	-	257,020,411.37 AUD	-	33,000,000.00 AUD
06/2023	-	244,233,443.82 AUD	-	33,000,000.00 AUD
07/2023	-	231,722,074.19 AUD	-	33,000,000.00 AUD
08/2023	-	221,614,546.79 AUD	-	30,881,196.38 AUD
09/2023	-	213,247,340.47 AUD	-	27,555,926.59 AUD
10/2023	-	205,041,213.19 AUD	-	24,305,102.53 AUD
11/2023	-	196,777,778.52 AUD	-	21,273,273.35 AUD
12/2023	-	188,589,788.90 AUD	-	20,388,085.29 AUD
01/2024	-	180,708,988.73 AUD	-	19,536,106.89 AUD
02/2024	-	172,885,128.24 AUD	-	18,690,284.14 AUD
03/2024	-	165,334,244.44 AUD	-	17,873,972.37 AUD
04/2024	-	157,688,795.96 AUD	-	17,047,437.40 AUD
05/2024	-	150,131,878.51 AUD	-	16,230,473.35 AUD
06/2024	-	142,217,430.62 AUD	-	15,374,857.37 AUD
07/2024	-	134,117,464.51 AUD	-	14,499,185.35 AUD
08/2024	-	127,075,517.22 AUD	-	13,737,893.75 AUD
09/2024	-	120,434,197.43 AUD	-	13,019,913.24 AUD
10/2024	-	114,245,670.02 AUD	-	12,350,883.25 AUD
11/2024	-	107,664,996.69 AUD	-	11,639,459.10 AUD
12/2024	-	101,324,098.91 AUD	-	10,953,956.63 AUD
01/2025	-	94,698,216.51 AUD	-	10,237,645.03 AUD
02/2025	-	88,817,193.39 AUD	-	9,601,858.74 AUD
03/2025	-	83,184,816.25 AUD	-	8,992,953.11 AUD
04/2025	-	77,353,611.97 AUD	-	8,362,552.65 AUD
05/2025	-	71,755,352.87 AUD	-	7,757,335.45 AUD
06/2025	-	65,716,851.21 AUD	-	7,104,524.46 AUD
07/2025	-	58,488,291.82 AUD	-	6,323,058.58 AUD
08/2025	-	52,910,252.32 AUD	-	5,720,027.28 AUD
09/2025	-	47,868,158.71 AUD	-	5,174,936.08 AUD
10/2025	-	- AUD	-	- AUD

\*Based on the following assumptions: CPR of 10%, Net Losses of 0% and Clean Up Call at 10% of the original outstanding discounted receivables balance

## Amortisation Profile II



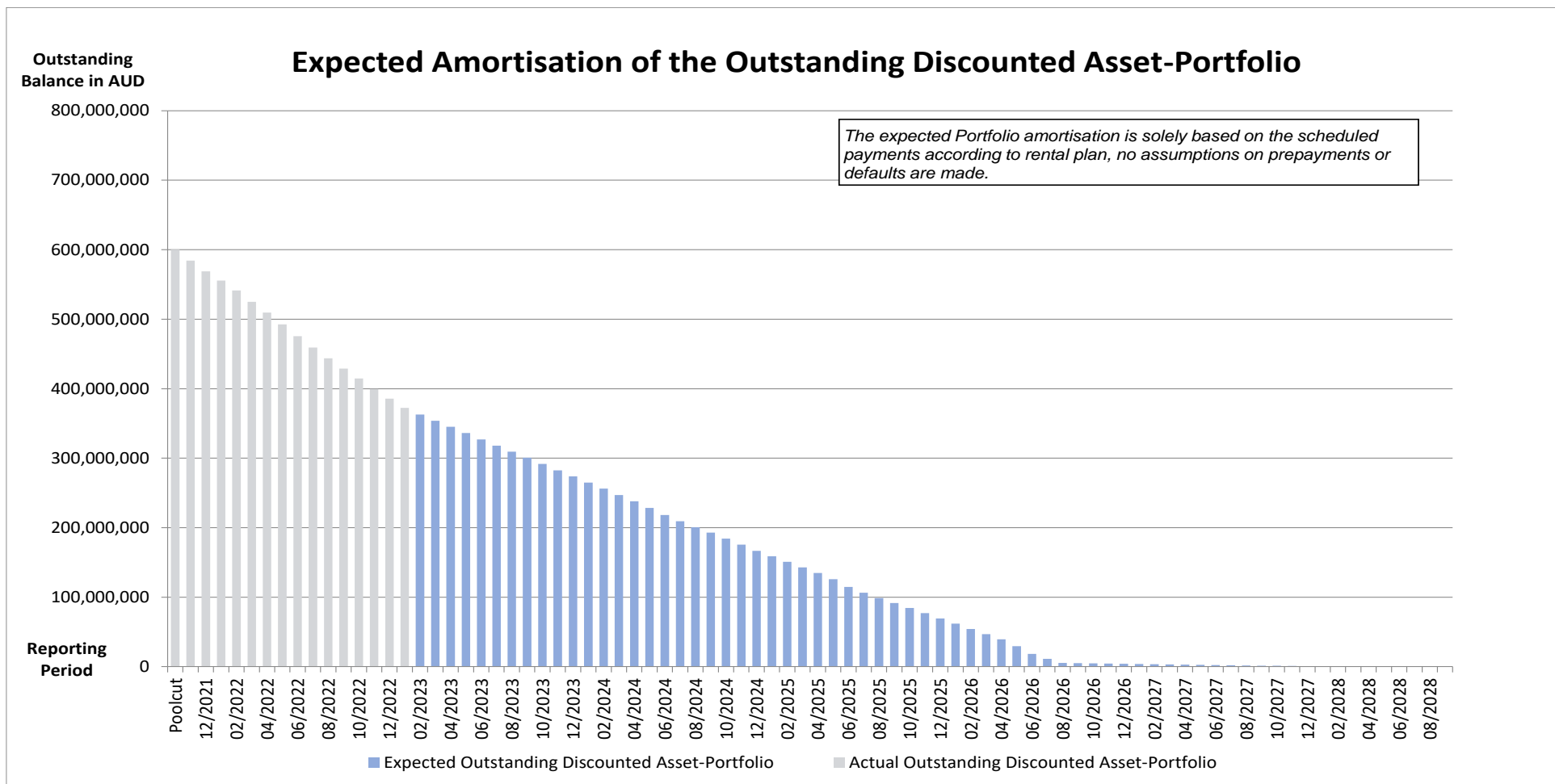
## Run Out Schedule I

End of Collection Period	Interest	Principal	Nominal Instalments
arrears	126,339.08 AUD	1,324,505.18 AUD	1,450,844.26 AUD
02/2023	1,557,670.42 AUD	8,509,892.93 AUD	10,067,563.35 AUD
03/2023	1,738,218.64 AUD	8,780,080.90 AUD	10,518,299.54 AUD
04/2023	1,706,370.61 AUD	8,737,830.33 AUD	10,444,200.94 AUD
05/2023	1,670,026.37 AUD	8,941,466.26 AUD	10,611,492.63 AUD
06/2023	1,628,169.04 AUD	9,082,215.46 AUD	10,710,384.50 AUD
07/2023	1,584,683.12 AUD	8,968,023.77 AUD	10,552,706.89 AUD
08/2023	1,542,061.59 AUD	8,691,492.88 AUD	10,233,554.47 AUD
09/2023	1,500,311.84 AUD	8,752,608.27 AUD	10,252,920.11 AUD
10/2023	1,458,185.21 AUD	8,935,764.25 AUD	10,393,949.46 AUD
11/2023	1,415,275.86 AUD	9,194,445.35 AUD	10,609,721.21 AUD
12/2023	1,371,074.34 AUD	8,747,209.67 AUD	10,118,284.01 AUD
01/2024	1,328,796.94 AUD	8,897,773.36 AUD	10,226,570.30 AUD
02/2024	1,285,721.97 AUD	8,819,252.11 AUD	10,104,974.08 AUD
03/2024	1,242,979.12 AUD	9,029,143.30 AUD	10,272,122.42 AUD
04/2024	1,199,357.93 AUD	8,998,193.17 AUD	10,197,551.10 AUD
05/2024	1,155,826.67 AUD	9,625,488.09 AUD	10,781,314.76 AUD
06/2024	1,109,274.89 AUD	10,282,578.94 AUD	11,391,853.83 AUD
07/2024	1,059,256.41 AUD	8,940,651.11 AUD	9,999,907.52 AUD
08/2024	1,015,988.32 AUD	8,480,734.65 AUD	9,496,722.97 AUD
09/2024	974,774.40 AUD	7,857,341.59 AUD	8,832,115.99 AUD
10/2024	936,644.44 AUD	8,605,190.47 AUD	9,541,834.91 AUD
11/2024	894,873.88 AUD	8,576,310.94 AUD	9,471,184.82 AUD
12/2024	853,177.52 AUD	8,989,358.82 AUD	9,842,536.34 AUD
01/2025	809,448.25 AUD	7,950,020.32 AUD	8,759,468.57 AUD
02/2025	770,834.17 AUD	7,878,730.25 AUD	8,649,564.42 AUD
03/2025	732,590.17 AUD	8,020,277.54 AUD	8,752,867.71 AUD
04/2025	693,581.77 AUD	8,092,238.10 AUD	8,785,819.87 AUD
05/2025	654,240.63 AUD	8,805,781.29 AUD	9,460,021.92 AUD
06/2025	611,556.39 AUD	11,294,863.88 AUD	11,906,420.27 AUD
07/2025	556,618.91 AUD	8,384,038.77 AUD	8,940,657.68 AUD
08/2025	515,925.11 AUD	7,696,368.63 AUD	8,212,293.74 AUD
09/2025	478,656.59 AUD	7,115,109.97 AUD	7,593,766.56 AUD
10/2025	444,058.20 AUD	7,053,297.46 AUD	7,497,355.66 AUD
11/2025	409,862.19 AUD	7,261,728.26 AUD	7,671,590.45 AUD
12/2025	374,878.15 AUD	8,000,553.30 AUD	8,375,431.45 AUD
01/2026	336,009.64 AUD	7,223,616.24 AUD	7,559,625.88 AUD
02/2026	300,879.20 AUD	7,887,183.09 AUD	8,188,062.29 AUD
03/2026	262,527.98 AUD	7,454,918.35 AUD	7,717,446.33 AUD
04/2026	226,268.01 AUD	7,379,861.06 AUD	7,606,129.07 AUD
05/2026	190,521.79 AUD	9,758,422.24 AUD	9,948,944.03 AUD
06/2026	143,083.01 AUD	11,096,232.03 AUD	11,239,315.04 AUD
07/2026	89,183.13 AUD	7,134,616.23 AUD	7,223,799.36 AUD
08/2026	54,477.56 AUD	5,788,187.50 AUD	5,842,665.06 AUD
09/2026	26,325.54 AUD	341,539.80 AUD	367,865.34 AUD
10/2026	24,664.15 AUD	394,386.78 AUD	419,050.93 AUD
11/2026	22,749.02 AUD	322,336.74 AUD	345,085.76 AUD
12/2026	21,181.49 AUD	336,719.12 AUD	357,900.61 AUD
01/2027	19,550.24 AUD	331,098.36 AUD	350,648.60 AUD
02/2027	17,939.53 AUD	358,924.75 AUD	376,864.28 AUD



03/2027	16,225.43 AUD	323,518.84 AUD	339,744.27 AUD
04/2027	14,658.68 AUD	291,085.36 AUD	305,744.04 AUD
05/2027	13,242.58 AUD	301,430.24 AUD	314,672.82 AUD
06/2027	11,776.26 AUD	302,135.28 AUD	313,911.54 AUD
07/2027	10,306.45 AUD	259,144.45 AUD	269,450.90 AUD
08/2027	9,045.88 AUD	244,525.68 AUD	253,571.56 AUD
09/2027	7,856.34 AUD	231,843.30 AUD	239,699.64 AUD
10/2027	6,728.51 AUD	217,605.44 AUD	224,333.95 AUD
11/2027	5,669.98 AUD	199,577.26 AUD	205,247.24 AUD
12/2027	4,699.09 AUD	183,019.10 AUD	187,718.19 AUD
01/2028	3,808.66 AUD	165,562.03 AUD	169,370.69 AUD
02/2028	3,003.45 AUD	149,565.93 AUD	152,569.38 AUD
03/2028	2,275.78 AUD	134,243.06 AUD	136,518.84 AUD
04/2028	1,622.80 AUD	117,810.62 AUD	119,433.42 AUD
05/2028	1,049.64 AUD	93,000.37 AUD	94,050.01 AUD
06/2028	597.25 AUD	64,428.33 AUD	65,025.58 AUD
07/2028	283.86 AUD	38,607.86 AUD	38,891.72 AUD
08/2028	96.01 AUD	14,350.50 AUD	14,446.51 AUD
09/2028	26.24 AUD	2,422.79 AUD	2,449.03 AUD
10/2028	14.46 AUD	1,800.28 AUD	1,814.74 AUD
11/2028	5.69 AUD	1,100.04 AUD	1,105.73 AUD
12/2028	0.34 AUD	70.57 AUD	70.91 AUD
01/2029	- AUD	- AUD	- AUD
<b>Total</b>	<b>39,255,662.81 AUD</b>	<b>372,465,449.19 AUD</b>	<b>411,721,112.00 AUD</b>

## Run Out Schedule II



**Outstanding Contracts I - Overview**

Total Portfolio as of Poolcut Date			Product Type			
Contract Status Development	Number of Contracts	Outstanding Discounted Receivables Balance	Chattel Mortgage		Consumer Loan	
			Number of Contracts	Outstanding Discounted Receivables Balance	Number of Contracts	Outstanding Discounted Receivables Balance
Normal	15,241	600,025,098.06 AUD	9,371	414,965,143.56 AUD	5,870	185,059,954.50 AUD
In Advance	-	- AUD	-	- AUD	-	- AUD
In Arrears	-	- AUD	-	- AUD	-	- AUD
Paid out/Matured	-	- AUD	-	- AUD	-	- AUD
Early Payout	-	- AUD	-	- AUD	-	- AUD
Gross Salvage	-	- AUD	-	- AUD	-	- AUD
Net Salvage	-	- AUD	-	- AUD	-	- AUD
<b>Total</b>	<b>15,241</b>	<b>600,025,098.06 AUD</b>	<b>9,371</b>	<b>414,965,143.56 AUD</b>	<b>5,870</b>	<b>185,059,954.50 AUD</b>

Total Portfolio as of Previous Month			Product Type			
Contract Status Development	Number of Contracts	Outstanding Discounted Receivables Balance	Chattel Mortgage		Consumer Loan	
			Number of Contracts	Outstanding Discounted Receivables Balance	Number of Contracts	Outstanding Discounted Receivables Balance
Normal	9,654	301,998,737.84 AUD	6,584	230,308,701.85 AUD	3,070	71,690,035.99 AUD
In Advance	1,479	41,446,567.87 AUD	598	19,874,694.60 AUD	881	21,571,873.27 AUD
In Arrears	1,317	41,947,952.58 AUD	657	22,800,328.42 AUD	660	19,147,624.16 AUD
Paid out/Matured	383	- AUD	243	- AUD	140	- AUD
Early Payout	2,391	- AUD	1,276	- AUD	1,115	- AUD
Gross Salvage	6	347,118.20 AUD	6	347,118.20 AUD	-	- AUD
Net Salvage	11	309,595.58 AUD	7	217,967.18 AUD	4	91,628.40 AUD
<b>Total</b>	<b>15,241</b>	<b>386,049,972.07 AUD</b>	<b>9,371</b>	<b>273,548,810.25 AUD</b>	<b>5,870</b>	<b>112,501,161.82 AUD</b>

Total Portfolio as of Current Reporting Period			Product Type			
Contract Status Development	Number of Contracts	Outstanding Discounted Receivables Balance	Chattel Mortgage		Consumer Loan	
			Number of Contracts	Outstanding Discounted Receivables Balance	Number of Contracts	Outstanding Discounted Receivables Balance
Normal	9,001	283,049,933.39 AUD	6,234	218,139,739.57 AUD	2,767	64,910,193.82 AUD
In Advance	1,778	46,853,835.03 AUD	811	23,521,094.04 AUD	967	23,332,740.99 AUD
In Arrears	1,482	42,302,143.44 AUD	684	22,105,504.82 AUD	798	20,196,638.62 AUD
Paid out/Matured	421	- AUD	268	- AUD	153	- AUD
Early Payout	2,539	- AUD	1,358	- AUD	1,181	- AUD
Gross Salvage	7	259,537.33 AUD	7	259,537.33 AUD	-	- AUD
Net Salvage	13	335,051.48 AUD	9	243,423.08 AUD	4	91,628.40 AUD
<b>Total</b>	<b>15,241</b>	<b>372,800,500.67 AUD</b>	<b>9,371</b>	<b>264,269,298.84 AUD</b>	<b>5,870</b>	<b>108,531,201.83 AUD</b>

## Outstanding Contracts I - Overview

Total Portfolio as of Poolcut Date			Balloon				Type of Car			
Contract Status Development	Number of Contracts	Outstanding Discounted Receivables Balance	Balloon		No Balloon		New Vehicle		Used Vehicle	
			Number of Contracts	Outstanding Discounted Receivables Balance	Number of Contracts	Outstanding Discounted Receivables Balance	Number of Contracts	Outstanding Discounted Receivables Balance	Number of Contracts	Outstanding Discounted Receivables Balance
Normal	15,241	600,025,098.06 AUD	4,261	251,558,699.25 AUD	10,980	348,466,398.81 AUD	10,680	463,158,976.27 AUD	4,561	136,866,121.79 AUD
In Advance	-	- AUD	-	- AUD	-	- AUD	-	- AUD	-	- AUD
In Arrears	-	- AUD	-	- AUD	-	- AUD	-	- AUD	-	- AUD
Paid out/Matured	-	- AUD	-	- AUD	-	- AUD	-	- AUD	-	- AUD
Early Payout	-	- AUD	-	- AUD	-	- AUD	-	- AUD	-	- AUD
Gross Salvage	-	- AUD	-	- AUD	-	- AUD	-	- AUD	-	- AUD
Net Salvage	-	- AUD	-	- AUD	-	- AUD	-	- AUD	-	- AUD
<b>Total</b>	<b>15,241</b>	<b>600,025,098.06 AUD</b>	<b>4,261</b>	<b>251,558,699.25 AUD</b>	<b>10,980</b>	<b>348,466,398.81 AUD</b>	<b>10,680</b>	<b>463,158,976.27 AUD</b>	<b>4,561</b>	<b>136,866,121.79 AUD</b>

Total Portfolio as of Previous Month			Balloon				Type of Car			
Contract Status Development	Number of Contracts	Outstanding Discounted Receivables Balance	Balloon		No Balloon		New Vehicle		Used Vehicle	
			Number of Contracts	Outstanding Discounted Receivables Balance	Number of Contracts	Outstanding Discounted Receivables Balance	Number of Contracts	Outstanding Discounted Receivables Balance	Number of Contracts	Outstanding Discounted Receivables Balance
Normal	9,654	301,998,737.84 AUD	2,918	147,221,841.00 AUD	6,736	154,776,896.84 AUD	6,959	242,494,955.76 AUD	2,695	59,503,782.08 AUD
In Advance	1,479	41,446,567.87 AUD	289	13,042,149.96 AUD	1,190	28,404,417.91 AUD	1,003	30,791,802.01 AUD	476	10,654,765.86 AUD
In Arrears	1,317	41,947,952.58 AUD	326	15,480,243.65 AUD	991	26,467,708.93 AUD	932	31,216,449.59 AUD	385	10,731,502.99 AUD
Paid out/Matured	383	- AUD	61	- AUD	322	- AUD	237	- AUD	146	- AUD
Early Payout	2,391	- AUD	659	- AUD	1,732	- AUD	1,540	- AUD	851	- AUD
Gross Salvage	6	347,118.20 AUD	2	159,386.75 AUD	4	187,731.45 AUD	4	312,354.85 AUD	2	34,763.35 AUD
Net Salvage	11	309,595.58 AUD	6	244,982.86 AUD	5	64,612.72 AUD	5	135,811.69 AUD	6	173,783.89 AUD
<b>Total</b>	<b>15,241</b>	<b>386,049,972.07 AUD</b>	<b>4,261</b>	<b>176,148,604.22 AUD</b>	<b>10,980</b>	<b>209,901,367.85 AUD</b>	<b>10,680</b>	<b>304,951,373.90 AUD</b>	<b>4,561</b>	<b>81,098,598.17 AUD</b>

Total Portfolio as of Current Reporting Period			Balloon				Type of Car			
Contract Status Development	Number of Contracts	Outstanding Discounted Receivables Balance	Balloon		No Balloon		New Vehicle		Used Vehicle	
			Number of Contracts	Outstanding Discounted Receivables Balance	Number of Contracts	Outstanding Discounted Receivables Balance	Number of Contracts	Outstanding Discounted Receivables Balance	Number of Contracts	Outstanding Discounted Receivables Balance
Normal	9,001	283,049,933.39 AUD	2,813	142,086,189.74 AUD	6,188	140,963,743.65 AUD	6,536	228,774,365.89 AUD	2,465	54,275,567.50 AUD
In Advance	1,778	46,853,835.03 AUD	356	14,490,193.93 AUD	1,422	32,363,641.10 AUD	1,218	34,489,140.98 AUD	560	12,364,694.05 AUD
In Arrears	1,482	42,302,143.44 AUD	316	14,342,827.27 AUD	1,166	27,959,316.17 AUD	1,018	30,945,691.24 AUD	464	11,356,452.20 AUD
Paid out/Matured	421	- AUD	70	- AUD	351	- AUD	257	- AUD	164	- AUD
Early Payout	2,539	- AUD	697	- AUD	1,842	- AUD	1,640	- AUD	899	- AUD
Gross Salvage	7	259,537.33 AUD	2	150,496.33 AUD	5	109,041.00 AUD	5	247,364.66 AUD	2	12,172.67 AUD
Net Salvage	13	335,051.48 AUD	7	261,290.21 AUD	6	73,761.27 AUD	6	152,119.04 AUD	7	182,932.44 AUD
<b>Total</b>	<b>15,241</b>	<b>372,800,500.67 AUD</b>	<b>4,261</b>	<b>171,330,997.48 AUD</b>	<b>10,980</b>	<b>201,469,503.19 AUD</b>	<b>10,680</b>	<b>294,608,681.81 AUD</b>	<b>4,561</b>	<b>78,191,818.86 AUD</b>

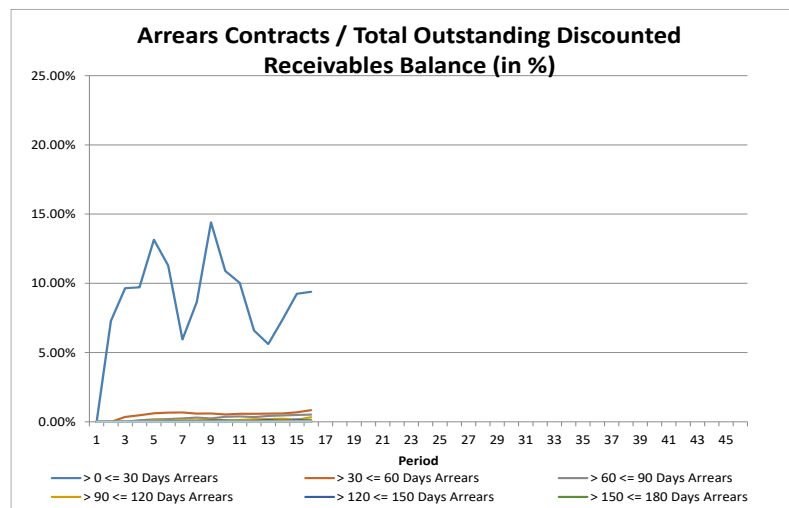
## Outstanding Contracts II - Collections

Collections This Reporting Month by Status	Change in Contract Statuses From Last Month	Number of Contracts This Month	Collections
Normal	(653)	9,001	7,925,782.95 AUD
In Advance	299	1,778	1,680,429.11 AUD
In Arrears	165	1,482	971,418.16 AUD
Paid out/Matured	38	421	153,002.61 AUD
Early Payout	148	2,539	4,161,871.23 AUD
Gross Salvage	1	7	122,892.46 AUD
Net Salvage	2	13	139,814.92 AUD
<b>Total</b>	<b>-</b>	<b>15,241</b>	<b>15,155,211.44 AUD</b>

Development of Pool within Reporting Period	Number of Active Contracts	Total Number of Contracts	Collection Variations	Outstanding Nominal Balance
Beginning of Period	12,456	15,241		427,262,786.88 AUD
<b>Scheduled Collections For Contracts Active This Period</b>			<b>10,151,946.21 AUD</b>	<b>10,151,946.21 AUD</b>
Collections Variations From Normal Contracts This Period			85,410.75 AUD	
Collection Variations From Contracts Paying Out Early This Period			4,184,501.75 AUD	
Collection Variations From Contracts Paying Out/Maturing This Period			108,972.55 AUD	
Collection Variations from Contracts in Advance This Period			727,399.47 AUD	
Collection Variations from Contract In Arrears This Period			(245,112.93 AUD)	
Collection Variations from Contracts Going Into Gross Salvage This Period			112,499.09 AUD	
Collection Variations from Contracts Going Into Net Salvage This Period			134,866.43 AUD	
Other Variations From Scheduled Collections This Period			- AUD	
<i>Instalment Collection Variations</i>			5,108,537.11 AUD	5,108,537.11 AUD
Contract Fees Collected This Period			62,435.72 AUD	
Interest Compensation Collections This Period			(167,707.60 AUD)	
<i>Non Instalment Collection Variations</i>			(105,271.88 AUD)	
<b>Actual Collections For Contracts Active This Period</b>			<b>15,155,211.44 AUD</b>	
Number of Contracts Paid Out Early This Month	148			
Number of Contracts Paid Out/Matured This Month	38			
Number of Contracts Into Net Salvage This Month	2			
Repurchased Contracts	-	-		
Less Recoveries After Net Salvage				(6,091.96 AUD)
Reduced Nominal Balance Due to Unpaid Rental At Net Salvage				25,965.13 AUD
Reduced Nominal Balance Due to Unpaid Rental At Early Payout				262,878.81 AUD
Reduced Nominal Balance Due to Other				(1,560.42 AUD)
<b>End of Period</b>	<b>12,268</b>	<b>15,241</b>		<b>411,721,112.00 AUD</b>

**Arrears Contracts**

Total Portfolio					Chattel Mortgage		Consumer Loan	
Days in Arrears	Number of Contracts	Number of Contracts (%)	Outstanding Discounted Receivables Balance	Outstanding Discounted Receivables Balance (%)	Number of Contracts	Outstanding Discounted Receivables Balance	Number of Contracts	Outstanding Discounted Receivables Balance
> 0 <= 30	1,278	10.42%	34,978,733.24 AUD	9.39%	536	16,197,607.17 AUD	742	18,781,126.07 AUD
> 30 <= 60	99	0.81%	3,140,862.88 AUD	0.84%	70	2,358,187.89 AUD	29	782,674.99 AUD
> 60 <= 90	48	0.39%	1,959,028.62 AUD	0.53%	32	1,561,055.27 AUD	16	397,973.35 AUD
> 90 <= 120	31	0.25%	1,217,220.36 AUD	0.33%	24	1,053,384.19 AUD	7	163,836.17 AUD
> 120 <= 150	9	0.07%	291,121.99 AUD	0.08%	7	233,293.32 AUD	2	57,828.67 AUD
> 150 <= 180	10	0.08%	493,804.99 AUD	0.13%	9	489,974.31 AUD	1	3,830.68 AUD
> 180 <= 210	5	0.04%	108,817.73 AUD	0.03%	5	108,817.73 AUD	-	- AUD
> 210 <= 240	1	0.01%	46,132.17 AUD	0.01%	1	46,132.17 AUD	-	- AUD
> 240 <= 270	4	0.03%	246,520.38 AUD	0.07%	4	246,520.38 AUD	-	- AUD
> 270 <= 300	-	0.00%	- AUD	0.00%	-	- AUD	-	- AUD
> 300 <= 330	-	0.00%	- AUD	0.00%	-	- AUD	-	- AUD
> 330 <= 360	-	0.00%	- AUD	0.00%	-	- AUD	-	- AUD
> 360	1	0.01%	9,368.69 AUD	0.00%	-	- AUD	1	9,368.69 AUD
<b>Total</b>	<b>1,486</b>	<b>12.11%</b>	<b>42,491,611.05 AUD</b>	<b>11.41%</b>	<b>688</b>	<b>22,294,972.43 AUD</b>	<b>798</b>	<b>20,196,638.62 AUD</b>



**Arrears Contracts**

Total Portfolio					Balloon				Vehicle Status			
Days in Arrears	Number of Contracts	Number of Contracts (%)	Outstanding Discounted Receivables Balance	Outstanding Discounted Receivables Balance (%)	Balloon		No Balloon		New		Used	
					Number of Contracts	Outstanding Discounted Receivables Balance	Number of Contracts	Outstanding Discounted Receivables Balance	Number of Contracts	Outstanding Discounted Receivables Balance	Number of Contracts	Outstanding Discounted Receivables Balance
> 0 <= 30	1,278	10.42%	34,978,733.24 AUD	9.39%	247	10,580,864.15 AUD	1,031	24,397,869.09 AUD	888	25,999,303.95 AUD	390	8,979,429.29 AUD
> 30 <= 60	99	0.81%	3,140,862.88 AUD	0.84%	27	1,318,619.66 AUD	72	1,822,243.22 AUD	59	2,141,627.95 AUD	40	999,234.93 AUD
> 60 <= 90	48	0.39%	1,959,028.62 AUD	0.53%	23	1,364,671.52 AUD	25	594,357.10 AUD	33	1,311,239.83 AUD	15	647,788.79 AUD
> 90 <= 120	31	0.25%	1,217,220.36 AUD	0.33%	10	636,678.09 AUD	21	580,542.27 AUD	22	898,853.66 AUD	9	318,366.70 AUD
> 120 <= 150	9	0.07%	291,121.99 AUD	0.08%	2	84,278.04 AUD	7	206,843.95 AUD	8	268,235.36 AUD	1	22,886.63 AUD
> 150 <= 180	10	0.08%	493,804.99 AUD	0.13%	4	215,159.05 AUD	6	278,645.94 AUD	7	298,986.51 AUD	3	194,818.48 AUD
> 180 <= 210	5	0.04%	108,817.73 AUD	0.03%	1	32,124.21 AUD	4	76,693.52 AUD	1	19,818.24 AUD	4	88,999.49 AUD
> 210 <= 240	1	0.01%	46,132.17 AUD	0.01%	1	46,132.17 AUD	-	- AUD	-	- AUD	1	46,132.17 AUD
> 240 <= 270	4	0.03%	246,520.38 AUD	0.07%	2	182,190.73 AUD	2	64,329.65 AUD	2	182,190.73 AUD	2	64,329.65 AUD
> 270 <= 300	-	0.00%	- AUD	0.00%	-	- AUD	-	- AUD	-	- AUD	-	- AUD
> 300 <= 330	-	0.00%	- AUD	0.00%	-	- AUD	-	- AUD	-	- AUD	-	- AUD
> 330 <= 360	-	0.00%	- AUD	0.00%	-	- AUD	-	- AUD	-	- AUD	-	- AUD
> 360	1	0.01%	9,368.69 AUD	0.00%	-	- AUD	1	9,368.69 AUD	1	9,368.69 AUD	-	- AUD
<b>Total</b>	<b>1,486</b>	<b>12.11%</b>	<b>42,491,611.05 AUD</b>	<b>11.41%</b>	<b>317</b>	<b>14,460,717.62 AUD</b>	<b>1,169</b>	<b>28,030,893.43 AUD</b>	<b>1,021</b>	<b>31,129,624.92 AUD</b>	<b>465</b>	<b>11,361,986.13 AUD</b>

## Net Salvage Loss

Net Salvage Loss This Period			
Product Type	Type of Car	Number of Contracts	Net Salvage Loss
Chattel Mortgage	New	1	16,307.35 AUD
	Used	1	9,148.55 AUD
<b>Total Chattel Mortgage</b>		<b>2</b>	<b>25,455.90 AUD</b>
Consumer Loan	New	-	- AUD
	Used	-	- AUD
<b>Total Consumer Loan</b>		<b>-</b>	<b>- AUD</b>
<b>Total</b>		<b>2</b>	<b>25,455.90 AUD</b>

<b>Cumulative Net Salvage Loss as of the End of the Monthly Period</b>	343,816.87 AUD
<b>Outstanding Discounted Receivables Balance at Poolcut</b>	600,025,098.06 AUD
<b>Cumulative Net Loss Ratio</b>	0.05730%

Monthly Period	Per Period		Cumulative Net Salvage Loss	
	Number of Contracts	Net Salvage Loss	Number of Contracts	Net Salvage Loss
11/2021	-	- AUD	-	- AUD
12/2021	-	- AUD	-	- AUD
01/2022	-	- AUD	-	- AUD
02/2022	-	- AUD	-	- AUD
03/2022	-	- AUD	-	- AUD
04/2022	-	- AUD	-	- AUD
05/2022	-	- AUD	-	- AUD
06/2022	-	- AUD	-	- AUD
07/2022	1	23,440.30 AUD	1	23,440.30 AUD
08/2022	4	57,706.41 AUD	5	81,146.71 AUD
09/2022	1	60,349.39 AUD	6	141,496.10 AUD
10/2022	1	5,937.71 AUD	7	147,433.81 AUD
11/2022	2	144,698.53 AUD	9	292,132.34 AUD
12/2022	2	26,228.63 AUD	11	318,360.97 AUD
01/2023	2	25,455.90 AUD	13	343,816.87 AUD
02/2023	-	- AUD	-	- AUD
03/2023	-	- AUD	-	- AUD
04/2023	-	- AUD	-	- AUD
05/2023	-	- AUD	-	- AUD
06/2023	-	- AUD	-	- AUD
07/2023	-	- AUD	-	- AUD
08/2023	-	- AUD	-	- AUD
09/2023	-	- AUD	-	- AUD
10/2023	-	- AUD	-	- AUD
11/2023	-	- AUD	-	- AUD
12/2023	-	- AUD	-	- AUD
01/2024	-	- AUD	-	- AUD
02/2024	-	- AUD	-	- AUD
03/2024	-	- AUD	-	- AUD
04/2024	-	- AUD	-	- AUD
05/2024	-	- AUD	-	- AUD
06/2024	-	- AUD	-	- AUD
07/2024	-	- AUD	-	- AUD
08/2024	-	- AUD	-	- AUD
09/2024	-	- AUD	-	- AUD
10/2024	-	- AUD	-	- AUD
11/2024	-	- AUD	-	- AUD
12/2024	-	- AUD	-	- AUD
01/2025	-	- AUD	-	- AUD
02/2025	-	- AUD	-	- AUD
03/2025	-	- AUD	-	- AUD
04/2025	-	- AUD	-	- AUD
05/2025	-	- AUD	-	- AUD
06/2025	-	- AUD	-	- AUD
07/2025	-	- AUD	-	- AUD
08/2025	-	- AUD	-	- AUD
09/2025	-	- AUD	-	- AUD
10/2025	-	- AUD	-	- AUD
11/2025	-	- AUD	-	- AUD
<b>Total</b>	<b>13</b>	<b>343,816.87 AUD</b>		



## Net Salvage After Recoveries

Net Salvaged Contracts						
Product Type	Vehicle Status	Number of Contracts	Gross Salvage Loss	Net Salvage Loss	Recoveries After Net Salvage	Net Salvage Loss After Recoveries
Chattel Mortgage	New	4	282,443.51 AUD	89,557.84 AUD	24,792.94 AUD	64,764.90 AUD
	Used	5	203,187.63 AUD	159,941.92 AUD	(135.89) AUD	160,077.81 AUD
<b>Total Chattel Mortgage</b>		<b>9</b>	<b>485,631.14 AUD</b>	<b>249,499.76 AUD</b>	<b>24,657.05 AUD</b>	<b>224,842.71 AUD</b>
Consumer Loan	New	2	66,539.05 AUD	66,287.10 AUD	(656.00) AUD	66,943.10 AUD
	Used	2	90,093.43 AUD	28,030.01 AUD	2,382.04 AUD	25,647.97 AUD
<b>Total Consumer Loan</b>		<b>4</b>	<b>156,632.48 AUD</b>	<b>94,317.11 AUD</b>	<b>1,726.04 AUD</b>	<b>92,591.07 AUD</b>
<b>Total</b>		<b>13</b>	<b>642,263.62 AUD</b>	<b>343,816.87 AUD</b>	<b>26,383.09 AUD</b>	<b>317,433.78 AUD</b>

## Prepayments

Period Number	Reporting Period	Unscheduled Payments	Opening Outstanding Discounted Receivables Balance	Periodic CPR	Annualised CPR
0	Poolcut	- AUD	- AUD		
1	11/2021	5,188,258.11 AUD	600,025,098.06 AUD	0.86%	10.03%
2	12/2021	4,579,685.92 AUD	584,284,031.03 AUD	0.78%	8.85%
3	01/2022	2,741,342.02 AUD	568,933,158.93 AUD	0.48%	5.53%
4	02/2022	3,337,851.56 AUD	555,556,298.45 AUD	0.60%	7.56%
5	03/2022	5,445,824.85 AUD	541,478,701.09 AUD	1.01%	11.22%
6	04/2022	4,593,099.08 AUD	524,992,591.30 AUD	0.87%	10.14%
7	05/2022	6,363,116.33 AUD	509,466,787.17 AUD	1.25%	13.76%
8	06/2022	6,297,060.40 AUD	492,432,848.37 AUD	1.28%	14.49%
9	07/2022	5,980,710.84 AUD	475,580,922.30 AUD	1.26%	13.84%
10	08/2022	5,404,312.88 AUD	459,209,842.01 AUD	1.18%	13.01%
11	09/2022	4,751,296.31 AUD	443,615,516.21 AUD	1.07%	12.28%
12	10/2022	4,429,370.71 AUD	428,807,300.51 AUD	1.03%	11.51%
13	11/2022	3,951,482.72 AUD	414,561,296.17 AUD	0.95%	11.00%
14	12/2022	3,173,581.07 AUD	399,393,166.38 AUD	0.79%	8.97%
15	01/2023	3,259,724.76 AUD	385,740,376.49 AUD	0.85%	9.51%

The annualised Constant Prepayment Rate (CPR) of the underlying receivables is based upon the most recent periodic CPR. Periodic CPR is equal to the total unscheduled principal received in the most recent period divided by the start of period principal balance. This is then annualised as follows:

$$1 - ((1 - \text{Periodic CPR})^{\text{number of periods in a year}})$$

## Pool Data I

### Down Payments

Total Portfolio						Product Type			
Down Payment	Number of Contracts	Percentage of Contracts	Outstanding Discounted Receivables Balance	Percentage of Balance	Down Payment/ Purchase Price in %	Chattel Mortgage		Consumer Loan	
						Number of Contracts	Outstanding Discounted Receivables Balance	Number of Contracts	Outstanding Discounted Receivables Balance
No Down Payment	2,148	17.51%	68,368,054.14 AUD	18.36%	0.00%	1,483	52,258,490.02 AUD	665	16,109,564.12 AUD
0.01 - 10,000.00	6,075	49.52%	168,250,130.17 AUD	45.17%	10.95%	3,636	109,857,688.06 AUD	2,439	58,392,442.11 AUD
10,000.01 - 20,000.00	2,374	19.35%	70,354,972.02 AUD	18.89%	26.55%	1,536	51,043,021.85 AUD	838	19,311,950.17 AUD
20,000.01 - 30,000.00	867	7.07%	28,003,648.74 AUD	7.52%	35.83%	526	20,136,965.63 AUD	341	7,866,683.11 AUD
30,000.01 - 40,000.00	399	3.25%	13,496,267.02 AUD	3.62%	42.56%	259	10,044,571.92 AUD	140	3,451,695.10 AUD
40,000.01 - 50,000.00	183	1.49%	8,182,026.73 AUD	2.20%	44.08%	122	6,419,617.12 AUD	61	1,762,409.61 AUD
50,000.01 - 60,000.00	89	0.73%	4,576,962.31 AUD	1.23%	45.86%	65	3,916,067.52 AUD	24	660,894.79 AUD
60,000.01 - 70,000.00	49	0.40%	3,209,114.12 AUD	0.86%	46.28%	41	3,011,857.44 AUD	8	197,256.68 AUD
70,000.01 - 80,000.00	23	0.19%	1,249,808.96 AUD	0.34%	49.59%	16	998,103.15 AUD	7	251,705.81 AUD
80,000.01 - 90,000.00	15	0.12%	925,286.33 AUD	0.25%	53.34%	12	808,301.91 AUD	3	116,984.42 AUD
90,000.01 - 100,000.00	11	0.09%	1,173,159.08 AUD	0.31%	46.51%	8	1,009,270.99 AUD	3	163,888.09 AUD
100,000.01 - 110,000.00	7	0.06%	800,680.98 AUD	0.21%	42.43%	7	800,680.98 AUD	-	- AUD
110,000.01 - 120,000.00	5	0.04%	631,378.76 AUD	0.17%	48.81%	5	631,378.76 AUD	-	- AUD
120,000.01 - 130,000.00	5	0.04%	528,065.27 AUD	0.14%	51.70%	3	470,057.09 AUD	2	58,008.18 AUD
130,000.01 - 140,000.00	3	0.02%	462,276.04 AUD	0.12%	44.71%	3	462,276.04 AUD	-	- AUD
140,000.01 - 150,000.00	-	0.00%	- AUD	0.00%	0.00%	-	- AUD	-	- AUD
> 150,000.00	15	0.12%	2,253,618.52 AUD	0.61%	63.39%	14	2,157,527.28 AUD	1	96,091.24 AUD
<b>Total</b>	<b>12,268</b>	<b>100.00%</b>	<b>372,465,449.19 AUD</b>	<b>100.00%</b>	<b>19.53%</b>	<b>7,736</b>	<b>264,025,875.76 AUD</b>	<b>4,532</b>	<b>108,439,573.43 AUD</b>

Statistics Down Payments	
Minimum Down Payment	- AUD
Maximum Down Payment	630,000.00 AUD
Weighted Average Down Payment (Customers that made a Down Payment)	16,913.53 AUD
Weighted Average Down Payment	13,808.96 AUD

### Type of Payment

Total Portfolio				
Type of Payment	Number of Contracts	Percentage of Contracts	Outstanding Discounted Receivables Balance	Percentage of Balance
Direct Debit	12,025	98.02%	364,892,053.45 AUD	97.97%
Other	243	1.98%	7,573,395.74 AUD	2.03%
<b>Total</b>	<b>12,268</b>	<b>100.00%</b>	<b>372,465,449.19 AUD</b>	<b>100.00%</b>

Product Type			
Chattel Mortgage		Consumer Loan	
Number of Contracts	Outstanding Discounted Receivables Balance	Number of Contracts	Outstanding Discounted Receivables Balance
7,575	258,170,965	4,450	106,721,088
161	5,854,911	82	1,718,485
<b>7,736</b>	<b>264,025,875.76 AUD</b>	<b>4,532</b>	<b>108,439,573.43 AUD</b>

## Pool Data I

### Down Payments

Total Portfolio						Balloon				Vehicle Status			
Down Payment	Number of Contracts	Percentage of Contracts	Outstanding Discounted Receivables Balance	Percentage of Balance	Down Payment/ Purchase Price in %	Balloon		No Balloon		New		Used	
						Number of Contracts	Outstanding Discounted Receivables Balance	Number of Contracts	Outstanding Discounted Receivables Balance	Number of Contracts	Outstanding Discounted Receivables Balance	Number of Contracts	Outstanding Discounted Receivables Balance
No Down Payment	2,148	17.51%	68,368,054.14 AUD	18.36%	0.00%	742	35,662,926.42 AUD	1,406	32,705,127.72 AUD	1,457	54,809,630.35 AUD	691	13,558,423.79 AUD
0.01 - 10,000.00	6,075	49.52%	168,250,130.17 AUD	45.17%	10.95%	1,581	68,333,778.09 AUD	4,494	99,916,352.08 AUD	4,127	127,770,178.43 AUD	1,948	40,479,951.74 AUD
10,000.01 - 20,000.00	2,374	19.35%	70,354,972.02 AUD	18.89%	26.55%	657	30,606,106.17 AUD	1,717	39,748,865.85 AUD	1,795	56,164,620.07 AUD	579	14,190,351.95 AUD
20,000.01 - 30,000.00	867	7.07%	28,003,648.74 AUD	7.52%	35.83%	242	13,885,820.09 AUD	625	14,117,828.65 AUD	710	23,322,620.19 AUD	157	4,681,028.55 AUD
30,000.01 - 40,000.00	399	3.25%	13,496,267.02 AUD	3.62%	42.56%	104	6,490,845.47 AUD	295	7,005,421.55 AUD	339	11,761,906.48 AUD	60	1,734,360.54 AUD
40,000.01 - 50,000.00	183	1.49%	8,182,026.73 AUD	2.20%	44.08%	61	5,018,398.49 AUD	122	3,163,628.24 AUD	149	6,559,601.11 AUD	34	1,622,425.62 AUD
50,000.01 - 60,000.00	89	0.73%	4,576,962.31 AUD	1.23%	45.86%	36	2,942,535.00 AUD	53	1,634,427.31 AUD	82	4,259,582.87 AUD	7	317,379.44 AUD
60,000.01 - 70,000.00	49	0.40%	3,209,114.12 AUD	0.86%	46.28%	22	2,221,936.86 AUD	27	987,177.26 AUD	43	2,713,777.73 AUD	6	495,336.39 AUD
70,000.01 - 80,000.00	23	0.19%	1,249,808.96 AUD	0.34%	49.59%	8	618,908.69 AUD	15	630,900.27 AUD	22	1,131,758.04 AUD	1	118,050.92 AUD
80,000.01 - 90,000.00	15	0.12%	925,286.33 AUD	0.25%	53.34%	5	584,992.91 AUD	10	340,293.42 AUD	14	863,654.26 AUD	1	61,632.07 AUD
90,000.01 - 100,000.00	11	0.09%	1,173,159.08 AUD	0.31%	46.51%	6	849,539.04 AUD	5	323,620.04 AUD	10	1,107,904.83 AUD	1	65,254.25 AUD
100,000.01 - 110,000.00	7	0.06%	800,680.98 AUD	0.21%	42.43%	2	385,832.74 AUD	5	414,848.24 AUD	5	559,529.86 AUD	2	241,151.12 AUD
110,000.01 - 120,000.00	5	0.04%	631,378.76 AUD	0.17%	48.81%	4	595,481.59 AUD	1	35,897.17 AUD	4	517,798.58 AUD	1	113,580.18 AUD
120,000.01 - 130,000.00	5	0.04%	528,065.27 AUD	0.14%	51.70%	3	470,057.09 AUD	2	58,008.18 AUD	4	347,779.54 AUD	1	180,285.73 AUD
130,000.01 - 140,000.00	3	0.02%	462,276.04 AUD	0.12%	44.71%	3	462,276.04 AUD	-	- AUD	3	462,276.04 AUD	-	- AUD
140,000.01 - 150,000.00	-	0.00%	- AUD	0.00%	0.00%	-	- AUD	-	- AUD	-	- AUD	-	- AUD
> 150,000.00	15	0.12%	2,253,618.52 AUD	0.61%	63.39%	11	1,940,272.58 AUD	4	313,345.94 AUD	13	2,103,944.39 AUD	2	149,674.13 AUD
<b>Total</b>	<b>12,268</b>	<b>100.00%</b>	<b>372,465,449.19 AUD</b>	<b>100.00%</b>	<b>19.53%</b>	<b>3,487</b>	<b>171,069,707.27 AUD</b>	<b>8,781</b>	<b>201,395,741.92 AUD</b>	<b>8,777</b>	<b>294,456,562.77 AUD</b>	<b>3,491</b>	<b>78,008,886.42 AUD</b>

Statistics Down Payments	
Minimum Down Payment	- AUD
Maximum Down Payment	630,000.00 AUD
Weighted Average Down Payment (Customers that made a Down Payment)	16,913.53 AUD
Weighted Average Down Payment	13,808.96 AUD

### Type of Payment

Total Portfolio				
Type of Payment	Number of Contracts	Percentage of Contracts	Outstanding Discounted Receivables Balance	Percentage of Balance
Direct Debit	12,025	98.02%	364,892,053.45 AUD	97.97%
Other	243	1.98%	7,573,395.74 AUD	2.03%
<b>Total</b>	<b>12,268</b>	<b>100.00%</b>	<b>372,465,449.19 AUD</b>	<b>100.00%</b>

Balloon				Vehicle Status			
Balloon		No Balloon		New		Used	
Number of Contracts	Outstanding Discounted Receivables Balance	Number of Contracts	Outstanding Discounted Receivables Balance	Number of Contracts	Outstanding Discounted Receivables Balance	Number of Contracts	Outstanding Discounted Receivables Balance
3,420	167,415,233	8,605	197,476,821	8,612	288,625,624	3,413	76,266,429
67	3,654,475	176	3,918,921	165	5,830,938	78	1,742,457
<b>3,487</b>	<b>171,069,707.27 AUD</b>	<b>8,781</b>	<b>201,395,741.92 AUD</b>	<b>8,777</b>	<b>294,456,562.77 AUD</b>	<b>3,491</b>	<b>78,008,886.42 AUD</b>

## Pool Data II

### Distribution of Contracts and Vehicles per Borrower

Number of Contracts Per Borrower	Number of Customers	Percentage of Customers	Number of Contracts	Percentage of Contracts	Outstanding Discounted Receivables Balance	Percentage of Balance
1	14,492	99.14%	12,069	98.18%	443,737,599.65 AUD	98.28%
2	119	0.81%	206	1.68%	7,416,484.53 AUD	1.64%
3	6	0.04%	18	0.15%	338,672.09 AUD	0.08%
4	-	0.00%	-	0.00%	- AUD	0.00%
5	-	0.00%	-	0.00%	- AUD	0.00%
6 - 10	-	0.00%	-	0.00%	- AUD	0.00%
> 10	-	0.00%	-	0.00%	- AUD	0.00%
<b>Total</b>	<b>14,617</b>	<b>100.00%</b>	<b>12,293</b>	<b>100.00%</b>	<b>451,492,756.27 AUD</b>	<b>100.00%</b>

### Top 20 Borrower

Ranking	Outstanding Discounted Receivables Balance	Percentage of Overall Balance	Number of Contracts
1	587,339.23 AUD	0.15769 %	1
2	365,169.08 AUD	0.09804 %	1
3	365,169.08 AUD	0.09804 %	1
4	344,472.85 AUD	0.09248 %	1
5	340,274.72 AUD	0.09136 %	1
6	332,873.44 AUD	0.08937 %	1
7	318,147.11 AUD	0.08542 %	1
8	318,147.11 AUD	0.08542 %	1
9	296,915.65 AUD	0.07972 %	1
10	292,631.76 AUD	0.07857 %	1
11	258,322.89 AUD	0.06935 %	1
12	253,003.37 AUD	0.06793 %	1
13	250,500.16 AUD	0.06725 %	1
14	247,592.31 AUD	0.06647 %	1
15	247,535.17 AUD	0.06646 %	1
16	242,697.30 AUD	0.06516 %	1
17	240,960.54 AUD	0.06469 %	1
18	232,021.65 AUD	0.06229 %	1
19	217,829.40 AUD	0.05848 %	1
20	214,459.03 AUD	0.05758 %	1
	<b>5,966,061.85 AUD</b>	<b>1.60178 %</b>	<b>20</b>

### Pool Data III

#### Distribution by Outstanding Discounted Receivables Balance

Total Portfolio					Product Type			
Distribution by Outstanding Discounted Receivables Balance	Number of Contracts	Percentage of Contracts	Outstanding Discounted Receivables Balance	Percentage of Balance	Chattel Mortgage		Consumer Loan	
					Number of Contracts	Outstanding Discounted Receivables Balance	Number of Contracts	Outstanding Discounted Receivables Balance
0.00 - 10,000.00	1,339	10.91%	8,173,015.03 AUD	2.19%	662	4,026,544.01 AUD	677	4,146,471.02 AUD
10,000.01 - 20,000.00	3,168	25.82%	48,770,471.70 AUD	13.09%	1,684	26,220,283.20 AUD	1,484	22,550,188.50 AUD
20,000.01 - 30,000.00	3,054	24.89%	75,658,846.58 AUD	20.31%	1,884	46,980,608.36 AUD	1,170	28,678,238.22 AUD
30,000.01 - 40,000.00	2,058	16.78%	71,098,372.62 AUD	19.09%	1,404	48,513,962.49 AUD	654	22,584,410.13 AUD
40,000.01 - 50,000.00	1,111	9.06%	49,420,815.05 AUD	13.27%	825	36,717,609.30 AUD	286	12,703,205.75 AUD
50,000.01 - 60,000.00	551	4.49%	30,103,647.26 AUD	8.08%	421	23,071,017.79 AUD	130	7,032,629.47 AUD
60,000.01 - 70,000.00	298	2.43%	19,294,776.36 AUD	5.18%	249	16,120,415.34 AUD	49	3,174,361.02 AUD
70,000.01 - 80,000.00	213	1.74%	15,886,108.90 AUD	4.27%	186	13,871,652.58 AUD	27	2,014,456.32 AUD
80,000.01 - 90,000.00	147	1.20%	12,445,946.08 AUD	3.34%	125	10,583,044.94 AUD	22	1,862,901.14 AUD
90,000.01 - 100,000.00	96	0.78%	9,088,133.88 AUD	2.44%	77	7,292,080.30 AUD	19	1,796,053.58 AUD
100,000.01 - 110,000.00	67	0.55%	7,015,753.79 AUD	1.88%	62	6,493,022.42 AUD	5	522,731.37 AUD
110,000.01 - 120,000.00	52	0.42%	5,953,010.52 AUD	1.60%	49	5,606,801.87 AUD	3	346,208.65 AUD
120,000.01 - 130,000.00	20	0.16%	2,493,863.59 AUD	0.67%	18	2,249,465.91 AUD	2	244,397.68 AUD
130,000.01 - 140,000.00	27	0.22%	3,637,160.63 AUD	0.98%	27	3,637,160.63 AUD	-	- AUD
140,000.01 - 150,000.00	10	0.08%	1,433,079.49 AUD	0.38%	10	1,433,079.49 AUD	-	- AUD
> 150,000.00	57	0.46%	11,992,447.71 AUD	3.22%	53	11,209,127.13 AUD	4	783,320.58 AUD
<b>Total</b>	<b>12,268</b>	<b>100.00%</b>	<b>372,465,449.19 AUD</b>	<b>100.00%</b>	<b>7,736</b>	<b>264,025,875.76 AUD</b>	<b>4,532</b>	<b>108,439,573.43 AUD</b>

Statistics Outstanding Discounted Receivables Balance	
Minimum Outstanding Discounted Receivables Balance	- AUD
Maximum Outstanding Discounted Receivables Balance	587,339.23 AUD
Average Outstanding Discounted Receivables Balance	30,360.73 AUD

#### Distribution by Original Balance

Total Portfolio					Product Type			
Distribution by Original Balance	Number of Contracts	Percentage of Contracts	Outstanding Discounted Receivables Balance	Percentage of Balance	Chattel Mortgage		Consumer Loan	
					Number of Contracts	Outstanding Discounted Receivables Balance	Number of Contracts	Outstanding Discounted Receivables Balance
0.00 - 10,000.00	75	0.61%	250,272.62 AUD	0.07%	29	77,678.52 AUD	46	172,594.10 AUD
10,000.01 - 20,000.00	1,145	9.33%	9,819,921.87 AUD	2.64%	503	4,337,138.14 AUD	642	5,482,783.73 AUD
20,000.01 - 30,000.00	2,485	20.26%	37,428,570.36 AUD	10.05%	1,285	19,317,635.55 AUD	1,200	18,110,934.81 AUD
30,000.01 - 40,000.00	2,546	20.75%	55,561,186.39 AUD	14.92%	1,481	32,117,320.53 AUD	1,065	23,443,865.86 AUD
40,000.01 - 50,000.00	1,949	15.89%	56,823,804.91 AUD	15.26%	1,287	37,513,926.71 AUD	662	19,309,878.20 AUD
50,000.01 - 60,000.00	1,490	12.15%	52,403,158.14 AUD	14.07%	1,083	37,865,020.30 AUD	407	14,538,137.84 AUD
60,000.01 - 70,000.00	974	7.94%	41,022,210.76 AUD	11.01%	705	29,574,398.15 AUD	269	11,447,812.61 AUD
70,000.01 - 80,000.00	493	4.02%	24,682,013.19 AUD	6.63%	395	19,805,507.79 AUD	98	4,876,505.40 AUD
80,000.01 - 90,000.00	274	2.23%	16,344,413.24 AUD	4.39%	230	13,772,510.86 AUD	44	2,571,902.38 AUD
90,000.01 - 100,000.00	182	1.48%	12,135,675.61 AUD	3.26%	159	10,565,376.40 AUD	23	1,570,299.21 AUD
100,000.01 - 110,000.00	206	1.68%	15,266,507.72 AUD	4.10%	179	13,288,144.35 AUD	27	1,978,363.37 AUD
110,000.01 - 120,000.00	92	0.75%	7,486,357.03 AUD	2.01%	82	6,632,512.55 AUD	10	853,844.48 AUD
120,000.01 - 130,000.00	87	0.71%	7,942,907.62 AUD	2.13%	67	6,163,781.42 AUD	20	1,779,126.20 AUD
130,000.01 - 140,000.00	66	0.54%	6,632,318.61 AUD	1.78%	59	5,923,334.29 AUD	7	708,984.32 AUD
140,000.01 - 150,000.00	46	0.37%	4,762,619.06 AUD	1.28%	44	4,552,622.25 AUD	2	209,996.81 AUD
> 150,000.00	158	1.29%	23,903,512.06 AUD	6.42%	148	22,518,967.95 AUD	10	1,384,544.11 AUD
<b>Total</b>	<b>12,268</b>	<b>100.00%</b>	<b>372,465,449.19 AUD</b>	<b>100.00%</b>	<b>7,736</b>	<b>264,025,875.76 AUD</b>	<b>4,532</b>	<b>108,439,573.43 AUD</b>

Statistics	
Minimum Original Balance	5,398.00 AUD
Maximum Original Balance	670,450.00 AUD
Weighted Average Original Receivables Balance (by ODRB)	70,483.41 AUD

**Pool Data III**

**Distribution by Outstanding Discounted Receivables Balance**

Total Portfolio					Balloon				Vehicle Status			
Distribution by Outstanding Discounted Receivables Balance	Number of Contracts	Percentage of Contracts	Outstanding Discounted Receivables Balance	Percentage of Balance	Balloon		No Balloon		New		Used	
					Number of Contracts	Outstanding Discounted Receivables Balance	Number of Contracts	Outstanding Discounted Receivables Balance	Number of Contracts	Outstanding Discounted Receivables Balance	Number of Contracts	Outstanding Discounted Receivables Balance
0.00 - 10,000.00	1,339	10.91%	8,173,015.03 AUD	2.19%	33	166,678.84 AUD	1,306	8,006,336.19 AUD	592	3,708,795.44 AUD	747	4,464,219.59 AUD
10,000.01 - 20,000.00	3,168	25.82%	48,770,471.70 AUD	13.09%	216	3,555,971.64 AUD	2,952	45,214,500.06 AUD	1,979	31,041,721.56 AUD	1,189	17,728,750.14 AUD
20,000.01 - 30,000.00	3,054	24.89%	75,658,846.58 AUD	20.31%	628	16,059,482.16 AUD	2,426	59,599,364.42 AUD	2,284	56,803,689.56 AUD	770	18,855,157.02 AUD
30,000.01 - 40,000.00	2,058	16.78%	71,098,372.62 AUD	19.09%	810	28,242,097.09 AUD	1,248	42,856,275.53 AUD	1,659	57,425,197.79 AUD	399	13,673,174.83 AUD
40,000.01 - 50,000.00	1,111	9.06%	49,420,815.05 AUD	13.27%	634	28,314,921.44 AUD	477	21,105,893.61 AUD	941	41,943,145.06 AUD	170	7,477,669.99 AUD
50,000.01 - 60,000.00	551	4.49%	30,103,647.26 AUD	8.08%	361	19,738,404.07 AUD	190	10,365,243.19 AUD	465	25,448,655.44 AUD	86	4,654,991.82 AUD
60,000.01 - 70,000.00	298	2.43%	19,294,776.36 AUD	5.18%	217	14,050,482.29 AUD	81	5,244,294.07 AUD	235	15,236,852.48 AUD	63	4,057,923.88 AUD
70,000.01 - 80,000.00	213	1.74%	15,886,108.90 AUD	4.27%	169	12,639,614.52 AUD	44	3,246,494.38 AUD	189	14,088,147.29 AUD	24	1,797,961.61 AUD
80,000.01 - 90,000.00	147	1.20%	12,445,946.08 AUD	3.34%	123	10,428,899.92 AUD	24	2,017,046.16 AUD	137	11,599,849.42 AUD	10	846,096.66 AUD
90,000.01 - 100,000.00	96	0.78%	9,088,133.88 AUD	2.44%	85	8,043,641.94 AUD	11	1,044,491.94 AUD	91	8,623,203.53 AUD	5	464,930.35 AUD
100,000.01 - 110,000.00	67	0.55%	7,015,753.79 AUD	1.88%	63	6,605,195.73 AUD	4	1,044,558.06 AUD	62	6,493,072.28 AUD	5	522,681.51 AUD
110,000.01 - 120,000.00	52	0.42%	5,953,010.52 AUD	1.60%	46	5,273,590.15 AUD	6	679,420.37 AUD	45	5,151,129.22 AUD	7	801,881.30 AUD
120,000.01 - 130,000.00	20	0.16%	2,493,863.59 AUD	0.67%	16	1,992,673.30 AUD	4	501,190.29 AUD	19	2,369,037.78 AUD	1	124,825.81 AUD
130,000.01 - 140,000.00	27	0.22%	3,637,160.63 AUD	0.98%	22	2,961,918.19 AUD	5	675,242.44 AUD	22	2,969,383.82 AUD	5	667,776.81 AUD
140,000.01 - 150,000.00	10	0.08%	1,433,079.49 AUD	0.38%	7	1,003,688.28 AUD	3	429,391.21 AUD	7	999,623.90 AUD	3	433,455.59 AUD
> 150,000.00	57	0.46%	11,992,447.71 AUD	3.22%	57	11,992,447.71 AUD	-	- AUD	50	10,555,058.20 AUD	7	1,437,389.51 AUD
<b>Total</b>	<b>12,268</b>	<b>100.00%</b>	<b>372,465,449.19 AUD</b>	<b>100.00%</b>	<b>3,487</b>	<b>171,069,707.27 AUD</b>	<b>8,781</b>	<b>201,395,741.92 AUD</b>	<b>8,777</b>	<b>294,456,562.77 AUD</b>	<b>3,491</b>	<b>78,008,886.42 AUD</b>

Statistics Outstanding Discounted Receivables Balance	
Minimum Outstanding Discounted Receivables Balance	- AUD
Maximum Outstanding Discounted Receivables Balance	587,339.23 AUD
Average Outstanding Discounted Receivables Balance	30,360.73 AUD

**Distribution by Original Balance**

Total Portfolio					Balloon				Vehicle Status			
Distribution by Original Balance	Number of Contracts	Percentage of Contracts	Outstanding Discounted Receivables Balance	Percentage of Balance	Balloon		No Balloon		New		Used	
					Number of Contracts	Outstanding Discounted Receivables Balance	Number of Contracts	Outstanding Discounted Receivables Balance	Number of Contracts	Outstanding Discounted Receivables Balance	Number of Contracts	Outstanding Discounted Receivables Balance
0.00 - 10,000.00	75	0.61%	250,272.62 AUD	0.07%	-	- AUD	75	250,272.62 AUD	12	48,124.99 AUD	63	202,147.63 AUD
10,000.01 - 20,000.00	1,145	9.33%	9,819,921.87 AUD	2.64%	37	433,548.07 AUD	1,108	9,386,373.80 AUD	378	3,360,864.96 AUD	767	6,459,056.91 AUD
20,000.01 - 30,000.00	2,485	20.26%	37,428,570.36 AUD	10.05%	212	3,897,091.59 AUD	2,273	33,531,478.77 AUD	1,510	22,790,075.64 AUD	975	14,638,494.72 AUD
30,000.01 - 40,000.00	2,546	20.75%	55,561,186.39 AUD	14.92%	497	12,671,135.40 AUD	2,049	42,890,050.99 AUD	1,821	39,727,490.58 AUD	725	15,833,695.81 AUD
40,000.01 - 50,000.00	1,949	15.89%	56,823,804.91 AUD	15.26%	609	19,905,206.43 AUD	1,340	36,918,598.48 AUD	1,528	44,105,876.35 AUD	421	12,717,928.56 AUD
50,000.01 - 60,000.00	1,490	12.15%	52,403,158.14 AUD	14.07%	599	23,648,184.03 AUD	891	28,754,974.11 AUD	1,275	44,455,103.21 AUD	215	7,948,054.93 AUD
60,000.01 - 70,000.00	974	7.94%	41,022,210.76 AUD	11.01%	436	20,260,485.90 AUD	538	20,761,724.86 AUD	850	35,514,562.03 AUD	124	5,507,648.73 AUD
70,000.01 - 80,000.00	493	4.02%	24,682,013.19 AUD	6.63%	280	15,327,265.50 AUD	213	9,354,747.69 AUD	425	21,002,919.89 AUD	68	3,679,093.30 AUD
80,000.01 - 90,000.00	274	2.23%	16,344,413.24 AUD	4.39%	184	11,626,921.11 AUD	90	4,717,492.13 AUD	223	13,196,712.19 AUD	51	3,147,701.05 AUD
90,000.01 - 100,000.00	182	1.48%	12,135,675.61 AUD	3.26%	128	9,098,655.81 AUD	54	3,037,019.80 AUD	162	10,862,303.57 AUD	20	1,273,372.04 AUD
100,000.01 - 110,000.00	206	1.68%	15,266,507.72 AUD	4.10%	142	11,058,229.89 AUD	64	4,208,277.83 AUD	187	13,850,849.02 AUD	19	1,415,658.70 AUD
110,000.01 - 120,000.00	92	0.75%	7,486,357.03 AUD	2.01%	73	6,125,415.43 AUD	19	1,360,941.60 AUD	82	6,690,072.01 AUD	10	796,285.02 AUD
120,000.01 - 130,000.00	87	0.71%	7,942,907.62 AUD	2.13%	66	6,265,870.83 AUD	21	1,677,036.79 AUD	81	7,418,278.16 AUD	6	524,629.46 AUD
130,000.01 - 140,000.00	66	0.54%	6,632,318.61 AUD	1.78%	56	5,816,212.74 AUD	10	816,105.87 AUD	61	6,059,624.79 AUD	5	572,693.82 AUD
140,000.01 - 150,000.00	46	0.37%	4,762,619.06 AUD	1.28%	41	4,405,496.61 AUD	5	357,122.45 AUD	44	4,531,752.06 AUD	2	230,867.00 AUD
> 150,000.00	158	1.29%	23,903,512.06 AUD	6.42%	127	20,529,987.93 AUD	31	3,373,524.13 AUD	138	20,841,953.32 AUD	20	3,061,558.74 AUD
<b>Total</b>	<b>12,268</b>	<b>100.00%</b>	<b>372,465,449.19 AUD</b>	<b>100.00%</b>	<b>3,487</b>	<b>171,069,707.27 AUD</b>	<b>8,781</b>	<b>201,395,741.92 AUD</b>	<b>8,777</b>	<b>294,456,562.77 AUD</b>	<b>3,491</b>	<b>78,008,886.42 AUD</b>

Statistics	
Minimum Original Balance	5,398.00 AUD
Maximum Original Balance	670,450.00 AUD
Weighted Average Original Receivables Balance (by ODRB)	70,483.41 AUD

Pool Data IV

Interest Rate paid by the Receivable Debtor

Total Portfolio					Product Type			
Interest Rate paid by the Receivable Debtor	Number of Contracts	Percentage of Contracts	Outstanding Discounted Receivables Balance	Percentage of Balance	Chattel Mortgage		Consumer Loan	
					Number of Contracts	Outstanding Discounted Receivables Balance	Number of Contracts	Outstanding Discounted Receivables Balance
0.00%	-	0.00%	- AUD	0.00%	-	- AUD	-	- AUD
0.01% - 1.00%	-	0.00%	- AUD	0.00%	-	- AUD	-	- AUD
1.01% - 2.00%	557	4.54%	14,874,807.98 AUD	3.99%	344	10,042,692.09 AUD	213	4,832,115.89 AUD
2.01% - 3.00%	804	6.55%	32,363,747.52 AUD	8.69%	543	26,355,891.04 AUD	261	6,007,856.48 AUD
3.01% - 4.00%	1,125	9.17%	43,806,031.73 AUD	11.76%	1,116	43,547,092.91 AUD	9	258,938.82 AUD
4.01% - 5.00%	1,282	10.45%	46,586,153.00 AUD	12.51%	1,031	39,363,385.75 AUD	251	7,222,767.25 AUD
5.01% - 6.00%	1,737	14.16%	56,898,668.91 AUD	15.28%	1,112	40,148,436.86 AUD	625	16,750,232.05 AUD
6.01% - 7.00%	2,245	18.30%	62,944,841.43 AUD	16.90%	989	32,977,323.18 AUD	1,256	29,967,518.25 AUD
7.01% - 8.00%	1,784	14.54%	45,470,865.79 AUD	12.21%	642	19,956,697.94 AUD	1,142	25,514,167.85 AUD
8.01% - 9.00%	1,722	14.04%	45,711,353.22 AUD	12.27%	1,187	33,252,534.86 AUD	535	12,458,818.36 AUD
9.01% - 10.00%	797	6.50%	19,660,174.17 AUD	5.28%	636	15,778,530.66 AUD	161	3,881,643.51 AUD
10.01% - 11.00%	169	1.38%	3,515,060.15 AUD	0.94%	124	2,467,688.84 AUD	45	1,047,371.31 AUD
11.01% - 12.00%	24	0.20%	419,533.67 AUD	0.11%	10	113,918.36 AUD	14	305,615.31 AUD
12.01% - 13.00%	7	0.06%	56,056.81 AUD	0.02%	-	- AUD	7	56,056.81 AUD
13.01% - 14.00%	8	0.07%	108,514.22 AUD	0.03%	1	18,961.80 AUD	7	89,552.42 AUD
14.01% - 15.00%	7	0.06%	49,640.59 AUD	0.01%	1	2,721.47 AUD	6	46,919.12 AUD
15.01% - 16.00%	-	0.00%	- AUD	0.00%	-	- AUD	-	- AUD
> 16.00%	-	0.00%	- AUD	0.00%	-	- AUD	-	- AUD
<b>Total</b>	<b>12,268</b>	<b>100.00%</b>	<b>372,465,449.19 AUD</b>	<b>100.00%</b>	<b>7,736</b>	<b>264,025,875.76 AUD</b>	<b>4,532</b>	<b>108,439,573.43 AUD</b>

Statistics Interest Rate		
Minimum Interest Rate Debtor		1.40%
Maximum Interest Rate Debtor		14.99%
Weighted Average Interest Rate Debtor		5.93%



Pool Data IV

Interest Rate paid by the Receivable Debtor

Total Portfolio					Balloon				Vehicle Status			
Interest Rate paid by the Receivable Debtor	Number of Contracts	Percentage of Contracts	Outstanding Discounted Receivables Balance	Percentage of Balance	Balloon		No Balloon		New		Used	
					Number of Contracts	Outstanding Discounted Receivables Balance	Number of Contracts	Outstanding Discounted Receivables Balance	Number of Contracts	Outstanding Discounted Receivables Balance	Number of Contracts	Outstanding Discounted Receivables Balance
0.00%	-	0.00%	- AUD	0.00%	-	- AUD	-	- AUD	-	- AUD	-	- AUD
0.01% - 1.00%	-	0.00%	- AUD	0.00%	-	- AUD	-	- AUD	-	- AUD	-	- AUD
1.01% - 2.00%	557	4.54%	14,874,807.98 AUD	3.99%	179	7,031,704.64 AUD	378	7,843,103.34 AUD	557	14,874,807.98 AUD	-	- AUD
2.01% - 3.00%	804	6.55%	32,363,747.52 AUD	8.69%	353	20,628,492.51 AUD	451	11,735,255.01 AUD	804	32,363,747.52 AUD	-	- AUD
3.01% - 4.00%	1,125	9.17%	43,806,031.73 AUD	11.76%	502	28,011,149.12 AUD	623	15,794,882.61 AUD	1,036	41,195,861.83 AUD	89	2,610,169.90 AUD
4.01% - 5.00%	1,282	10.45%	46,586,153.00 AUD	12.51%	521	26,776,574.01 AUD	761	19,809,578.99 AUD	1,028	38,956,351.82 AUD	254	7,629,801.18 AUD
5.01% - 6.00%	1,737	14.16%	56,898,668.91 AUD	15.28%	598	29,805,928.24 AUD	1,139	27,092,740.67 AUD	1,341	47,014,873.59 AUD	396	9,883,795.32 AUD
6.01% - 7.00%	2,245	18.30%	62,944,841.43 AUD	16.90%	571	26,346,780.22 AUD	1,674	36,598,061.21 AUD	1,605	48,616,468.56 AUD	640	14,328,372.87 AUD
7.01% - 8.00%	1,784	14.54%	45,470,865.79 AUD	12.21%	346	14,893,461.54 AUD	1,438	30,577,404.25 AUD	989	28,957,737.97 AUD	795	16,513,127.82 AUD
8.01% - 9.00%	1,722	14.04%	45,711,353.22 AUD	12.27%	298	12,854,630.20 AUD	1,424	32,856,723.02 AUD	1,075	32,708,038.79 AUD	647	13,003,314.43 AUD
9.01% - 10.00%	797	6.50%	19,660,174.17 AUD	5.28%	107	4,345,795.56 AUD	690	15,314,378.61 AUD	302	8,976,851.60 AUD	495	10,683,322.57 AUD
10.01% - 11.00%	169	1.38%	3,515,060.15 AUD	0.94%	10	317,370.76 AUD	159	3,197,689.39 AUD	24	604,454.95 AUD	145	2,910,605.20 AUD
11.01% - 12.00%	24	0.20%	419,533.67 AUD	0.11%	1	28,853.80 AUD	23	390,679.87 AUD	9	102,545.19 AUD	15	316,988.48 AUD
12.01% - 13.00%	7	0.06%	56,056.81 AUD	0.02%	-	- AUD	7	56,056.81 AUD	1	1,572.82 AUD	6	54,483.99 AUD
13.01% - 14.00%	8	0.07%	108,514.22 AUD	0.03%	1	28,966.67 AUD	7	79,547.55 AUD	5	73,711.63 AUD	3	34,802.59 AUD
14.01% - 15.00%	7	0.06%	49,640.59 AUD	0.01%	-	- AUD	7	49,640.59 AUD	1	9,538.52 AUD	6	40,102.07 AUD
15.01% - 16.00%	-	0.00%	- AUD	0.00%	-	- AUD	-	- AUD	-	- AUD	-	- AUD
> 16.00%	-	0.00%	- AUD	0.00%	-	- AUD	-	- AUD	-	- AUD	-	- AUD
<b>Total</b>	<b>12,268</b>	<b>100.00%</b>	<b>372,465,449.19 AUD</b>	<b>100.00%</b>	<b>3,487</b>	<b>171,069,707.27 AUD</b>	<b>8,781</b>	<b>201,395,741.92 AUD</b>	<b>8,777</b>	<b>294,456,562.77 AUD</b>	<b>3,491</b>	<b>78,008,886.42 AUD</b>

Statistics Interest Rate			
Minimum Interest Rate Debtor			1.40%
Maximum Interest Rate Debtor			14.99%
Weighted Average Interest Rate Debtor			5.93%

Pool Data V

Original Term

Total Portfolio					Product Type			
Length of Original Term (months)	Number of Contracts	Percentage of Contracts	Outstanding Discounted Receivables Balance	Percentage of Balance	Chattel Mortgage		Consumer Loan	
					Number of Contracts	Outstanding Discounted Receivables Balance	Number of Contracts	Outstanding Discounted Receivables Balance
0 - 11	-	0.00%	- AUD	0.00%	-	- AUD	-	- AUD
12 - 23	15	0.12%	67,547.29 AUD	0.02%	11	47,249.96 AUD	4	20,297.33 AUD
24 - 35	213	1.74%	1,497,911.95 AUD	0.40%	138	1,177,058.14 AUD	75	320,853.81 AUD
36 - 47	1,376	11.22%	25,570,123.82 AUD	6.87%	965	20,540,546.10 AUD	411	5,029,577.72 AUD
48 - 59	1,886	15.37%	51,325,779.70 AUD	13.78%	1,225	37,582,675.29 AUD	661	13,743,104.41 AUD
60 - 71	8,209	66.91%	276,560,948.67 AUD	74.25%	5,397	204,678,346.27 AUD	2,812	71,882,602.40 AUD
> 71	569	4.64%	17,443,137.76 AUD	4.68%	-	- AUD	569	17,443,137.76 AUD
<b>Total</b>	<b>12,268</b>	<b>100.00%</b>	<b>372,465,449.19 AUD</b>	<b>100.00%</b>	<b>7,736</b>	<b>264,025,875.76 AUD</b>	<b>4,532</b>	<b>108,439,573.43 AUD</b>

Statistics Original Term			
Minimum Original Term in months			18
Maximum Original Term in months			84
Weighted Average Original Term month (by ODRB)			57.67

Remaining Term

Total Portfolio					Product Type			
Length of Remaining Term (months)	Number of Contracts	Percentage of Contracts	Outstanding Discounted Receivables Balance	Percentage of Balance	Chattel Mortgage		Consumer Loan	
					Number of Contracts	Outstanding Discounted Receivables Balance	Number of Contracts	Outstanding Discounted Receivables Balance
0 - 11	796	6.49%	7,841,160.92 AUD	2.11%	500	6,030,939.78 AUD	296	1,810,221.14 AUD
12 - 23	1,892	15.42%	42,275,110.82 AUD	11.35%	1,223	31,334,751.28 AUD	669	10,940,359.54 AUD
24 - 35	3,943	32.14%	111,056,653.23 AUD	29.82%	2,563	80,379,884.03 AUD	1,380	30,676,769.20 AUD
36 - 47	5,131	41.82%	194,061,720.81 AUD	52.10%	3,436	145,374,297.41 AUD	1,695	48,687,423.40 AUD
48 - 59	228	1.86%	7,341,553.97 AUD	1.97%	14	906,003.26 AUD	214	6,435,550.71 AUD
60 - 71	278	2.27%	9,889,249.44 AUD	2.66%	-	- AUD	278	9,889,249.44 AUD
> 71	-	0.00%	- AUD	0.00%	-	- AUD	-	- AUD
<b>Total</b>	<b>12,268</b>	<b>100.00%</b>	<b>372,465,449.19 AUD</b>	<b>100.00%</b>	<b>7,736</b>	<b>264,025,875.76 AUD</b>	<b>4,532</b>	<b>108,439,573.43 AUD</b>

Statistics Remaining Term			
Minimum Remaining Term in months			0
Maximum Remaining Term in months			70
Weighted Average Remaining Term in months (by ODRB)			35.07

Distribution by Seasoning

Total Portfolio					Product Type			
Seasoning (months)	Number of Contracts	Percentage of Contracts	Outstanding Discounted Receivables Balance	Percentage of Balance	Chattel Mortgage		Consumer Loan	
					Number of Contracts	Outstanding Discounted Receivables Balance	Number of Contracts	Outstanding Discounted Receivables Balance
0 - 11	16	0.13%	914,857.00 AUD	0.25%	14	866,808.59 AUD	2	48,048.41 AUD
12 - 23	7,024	57.25%	240,088,020.53 AUD	64.46%	4,598	174,633,728.82 AUD	2,426	65,454,291.71 AUD
24 - 35	4,807	39.18%	124,711,829.93 AUD	33.48%	2,939	84,748,553.03 AUD	1,868	39,963,276.90 AUD
36 - 47	268	2.18%	5,234,385.11 AUD	1.41%	136	3,007,138.86 AUD	132	2,227,246.25 AUD
48 - 59	102	0.83%	1,038,880.26 AUD	0.28%	48	769,646.46 AUD	54	269,233.80 AUD
60 - 71	47	0.38%	461,472.31 AUD	0.12%	1	- AUD	46	461,472.31 AUD
> 71	4	0.03%	16,004.05 AUD	0.00%	-	- AUD	4	16,004.05 AUD
<b>Total</b>	<b>12,268</b>	<b>100.00%</b>	<b>372,465,449.19 AUD</b>	<b>100.00%</b>	<b>7,736</b>	<b>264,025,875.76 AUD</b>	<b>4,532</b>	<b>108,439,573.43 AUD</b>

Statistics Seasoning			
Minimum Seasoning in months			4
Maximum Seasoning in months			82
Weighted Average Seasoning Term in months (by ODRB)			22.65

Pool Data V

Original Term

Total Portfolio					Balloon				Vehicle Status			
Length of Original Term (months)	Number of Contracts	Percentage of Contracts	Outstanding Discounted Receivables Balance	Percentage of Balance	Balloon		No Balloon		New		Used	
					Number of Contracts	Outstanding Discounted Receivables Balance	Number of Contracts	Outstanding Discounted Receivables Balance	Number of Contracts	Outstanding Discounted Receivables Balance	Number of Contracts	Outstanding Discounted Receivables Balance
0 - 11	-	0.00%	- AUD	0.00%	-	- AUD	-	- AUD	-	- AUD	-	- AUD
12 - 23	15	0.12%	67,547.29 AUD	0.02%	2	32,691.64 AUD	13	34,855.65 AUD	4	25,665.38 AUD	11	41,881.91 AUD
24 - 35	213	1.74%	1,497,911.95 AUD	0.40%	13	429,871.34 AUD	200	1,068,040.61 AUD	61	540,265.47 AUD	152	957,646.48 AUD
36 - 47	1,376	11.22%	25,570,123.82 AUD	6.87%	283	10,811,382.82 AUD	1,093	14,758,741.00 AUD	959	21,054,992.62 AUD	417	4,515,131.20 AUD
48 - 59	1,886	15.37%	51,325,779.70 AUD	13.78%	563	24,800,785.68 AUD	1,323	26,524,994.02 AUD	1,528	45,477,383.45 AUD	358	5,848,396.25 AUD
60 - 71	8,209	66.91%	276,560,948.67 AUD	74.25%	2,626	134,994,975.79 AUD	5,583	141,565,972.88 AUD	5,842	215,342,005.39 AUD	2,367	61,218,943.29 AUD
> 71	569	4.64%	17,443,137.76 AUD	4.68%	-	- AUD	569	17,443,137.76 AUD	383	12,016,250.47 AUD	186	5,426,887.29 AUD
<b>Total</b>	<b>12,268</b>	<b>100.00%</b>	<b>372,465,449.19 AUD</b>	<b>100.00%</b>	<b>3,487</b>	<b>171,069,707.27 AUD</b>	<b>8,781</b>	<b>201,395,741.92 AUD</b>	<b>8,777</b>	<b>294,456,562.77 AUD</b>	<b>3,491</b>	<b>78,008,886.42 AUD</b>

Statistics Original Term			
Minimum Original Term in months			18
Maximum Original Term in months			84
Weighted Average Original Term month (by ODRB)			57.67

Remaining Term

Total Portfolio					Balloon				Vehicle Status			
Length of Remaining Term (months)	Number of Contracts	Percentage of Contracts	Outstanding Discounted Receivables Balance	Percentage of Balance	Balloon		No Balloon		New		Used	
					Number of Contracts	Outstanding Discounted Receivables Balance	Number of Contracts	Outstanding Discounted Receivables Balance	Number of Contracts	Outstanding Discounted Receivables Balance	Number of Contracts	Outstanding Discounted Receivables Balance
0 - 11	796	6.49%	7,841,160.92 AUD	2.11%	150	4,295,509.75 AUD	646	3,545,651.17 AUD	464	5,644,089.02 AUD	332	2,197,071.90 AUD
12 - 23	1,892	15.42%	42,275,110.82 AUD	11.35%	488	20,268,684.39 AUD	1,404	22,006,426.43 AUD	1,428	36,281,081.88 AUD	464	5,994,028.94 AUD
24 - 35	3,943	32.14%	111,056,653.23 AUD	29.82%	1,140	50,283,771.31 AUD	2,803	60,772,881.92 AUD	2,829	88,857,076.12 AUD	1,114	22,199,577.11 AUD
36 - 47	5,131	41.82%	194,061,720.81 AUD	52.10%	1,701	95,641,779.91 AUD	3,430	98,419,940.90 AUD	3,713	151,767,889.16 AUD	1,418	42,293,831.65 AUD
48 - 59	228	1.86%	7,341,553.97 AUD	1.97%	8	579,961.91 AUD	220	6,761,592.06 AUD	148	4,938,997.69 AUD	80	2,402,556.28 AUD
60 - 71	278	2.27%	9,889,249.44 AUD	2.66%	-	- AUD	278	9,889,249.44 AUD	195	6,967,428.90 AUD	83	2,921,820.54 AUD
> 71	-	0.00%	- AUD	0.00%	-	- AUD	-	- AUD	-	- AUD	-	- AUD
<b>Total</b>	<b>12,268</b>	<b>100.00%</b>	<b>372,465,449.19 AUD</b>	<b>100.00%</b>	<b>3,487</b>	<b>171,069,707.27 AUD</b>	<b>8,781</b>	<b>201,395,741.92 AUD</b>	<b>8,777</b>	<b>294,456,562.77 AUD</b>	<b>3,491</b>	<b>78,008,886.42 AUD</b>

Statistics Remaining Term			
Minimum Remaining Term in months			0
Maximum Remaining Term in months			70
Weighted Average Remaining Term in months (by ODRB)			35.07

Distribution by Seasoning

Total Portfolio					Balloon				Vehicle Status			
Seasoning (months)	Number of Contracts	Percentage of Contracts	Outstanding Discounted Receivables Balance	Percentage of Balance	Balloon		No Balloon		New		Used	
					Number of Contracts	Outstanding Discounted Receivables Balance	Number of Contracts	Outstanding Discounted Receivables Balance	Number of Contracts	Outstanding Discounted Receivables Balance	Number of Contracts	Outstanding Discounted Receivables Balance
0 - 11	16	0.13%	914,857.00 AUD	0.25%	8	579,961.91 AUD	8	334,895.09 AUD	7	554,034.68 AUD	9	360,822.32 AUD
12 - 23	7,024	57.25%	240,088,020.53 AUD	64.46%	2,032	109,650,512.54 AUD	4,992	130,437,507.99 AUD	5,011	189,290,559.27 AUD	2,013	50,797,461.26 AUD
24 - 35	4,807	39.18%	124,711,829.93 AUD	33.48%	1,332	57,093,329.16 AUD	3,475	67,618,500.77 AUD	3,463	99,532,616.03 AUD	1,344	25,179,213.90 AUD
36 - 47	268	2.18%	5,234,385.11 AUD	1.41%	77	2,959,201.60 AUD	191	2,275,183.51 AUD	193	4,264,271.31 AUD	75	970,113.80 AUD
48 - 59	102	0.83%	1,038,880.26 AUD	0.28%	36	786,702.06 AUD	66	252,178.20 AUD	69	477,158.11 AUD	33	561,722.15 AUD
60 - 71	47	0.38%	461,472.31 AUD	0.12%	2	- AUD	45	461,472.31 AUD	31	325,410.35 AUD	16	136,061.96 AUD
> 71	4	0.03%	16,004.05 AUD	0.00%	-	- AUD	4	16,004.05 AUD	3	12,513.02 AUD	1	3,491.03 AUD
<b>Total</b>	<b>12,268</b>	<b>100.00%</b>	<b>372,465,449.19 AUD</b>	<b>100.00%</b>	<b>3,487</b>	<b>171,069,707.27 AUD</b>	<b>8,781</b>	<b>201,395,741.92 AUD</b>	<b>8,777</b>	<b>294,456,562.77 AUD</b>	<b>3,491</b>	<b>78,008,886.42 AUD</b>

Statistics Seasoning			
Minimum Seasoning in months			4
Maximum Seasoning in months			82
Weighted Average Seasoning Term in months (by ODRB)			22.65

Pool Data VI

Product Type

Total Portfolio					Balloon				Vehicle Status			
Product Type	Number of Contracts	Percentage of Contracts	Outstanding Discounted Receivables Balance	Percentage of Balance	Balloon		No Balloon		New		Used	
					Number of Contracts	Outstanding Discounted Receivables Balance	Number of Contracts	Outstanding Discounted Receivables Balance	Number of Contracts	Outstanding Discounted Receivables Balance	Number of Contracts	Outstanding Discounted Receivables Balance
Chattel Mortgage	7,736	63.06%	264,025,875.76 AUD	70.89%	2,756	141,763,059.85 AUD	4,980	122,262,815.91 AUD	5,767	214,717,647.85 AUD	1,969	49,308,227.91 AUD
Consumer Loan	4,532	36.94%	108,439,573.43 AUD	29.11%	731	29,306,647.42 AUD	3,801	79,132,926.01 AUD	3,010	79,738,914.92 AUD	1,522	28,700,658.51 AUD
<b>Total</b>	<b>12,268</b>	<b>100.00%</b>	<b>372,465,449.19 AUD</b>	<b>100.00%</b>	<b>3,487</b>	<b>171,069,707.27 AUD</b>	<b>8,781</b>	<b>201,395,741.92 AUD</b>	<b>8,777</b>	<b>294,456,562.77 AUD</b>	<b>3,491</b>	<b>78,008,886.42 AUD</b>

Vehicle Status

Total Portfolio					Product Type			
Type of Car	Number of Contracts	Percentage of Contracts	Outstanding Discounted Receivables Balance	Percentage of Balance	Chattel Mortgage		Consumer Loan	
					Number of Contracts	Outstanding Discounted Receivables Balance	Number of Contracts	Outstanding Discounted Receivables Balance
New Vehicles	8,777	71.54%	294,456,562.77 AUD	79.06%	5,767	214,717,647.85 AUD	3,010	79,738,914.92 AUD
Used Vehicles	3,491	28.46%	78,008,886.42 AUD	20.94%	1,969	49,308,227.91 AUD	1,522	28,700,658.51 AUD
<b>Total</b>	<b>12,268</b>	<b>100.00%</b>	<b>372,465,449.19 AUD</b>	<b>100.00%</b>	<b>7,736</b>	<b>264,025,875.76 AUD</b>	<b>4,532</b>	<b>108,439,573.43 AUD</b>

Balloon

Total Portfolio				
Balloon	Number of Contracts	Percentage of Contracts	Outstanding Discounted Receivables Balance	Percentage of Balance
Balloon	3,487	28.42%	171,069,707.27 AUD	45.93%
No Balloon	8,781	71.58%	201,395,741.92 AUD	54.07%
<b>Total</b>	<b>12,268</b>	<b>100.00%</b>	<b>372,465,449.19 AUD</b>	<b>100.00%</b>

Pool Data VII

Distribution by Vehicle Brand and Models

Total Portfolio						Product Type			
Make	Model	Number of Contracts	Percentage of Contracts	Outstanding Discounted Receivables Balance	Percentage of Balance	Chattel Mortgage		Consumer Loan	
						Number of Contracts	Outstanding Discounted Receivables Balance	Number of Contracts	Outstanding Discounted Receivables Balance
Volkswagen Group Vehicles									
AUDI	A1	48	0.39%	922,988.15 AUD	0.25%	24	438,366.26 AUD	24	484,621.89 AUD
	A3	247	2.01%	7,756,397.01 AUD	2.08%	111	3,948,537.79 AUD	136	3,807,859.22 AUD
	A4	113	0.92%	3,721,093.21 AUD	1.00%	66	2,535,316.60 AUD	47	1,185,776.61 AUD
	A5	76	0.62%	3,071,329.34 AUD	0.82%	53	2,250,877.25 AUD	23	820,452.09 AUD
	A6	27	0.22%	1,220,503.09 AUD	0.33%	18	945,091.56 AUD	9	275,411.53 AUD
	A7	12	0.10%	929,964.18 AUD	0.25%	11	914,455.49 AUD	1	15,508.69 AUD
	A8	3	0.02%	127,751.43 AUD	0.03%	3	127,751.43 AUD	-	- AUD
	E-TRON	8	0.07%	759,215.75 AUD	0.20%	7	697,275.54 AUD	1	61,940.21 AUD
	Q2	87	0.71%	2,160,210.86 AUD	0.58%	34	955,146.18 AUD	53	1,205,064.68 AUD
	Q3	257	2.09%	8,182,944.28 AUD	2.20%	136	4,695,670.69 AUD	121	3,487,273.59 AUD
	Q5	272	2.22%	10,865,451.92 AUD	2.92%	181	7,448,558.23 AUD	91	3,416,893.69 AUD
	Q7	214	1.74%	12,397,497.44 AUD	3.33%	169	10,099,975.48 AUD	45	2,297,521.96 AUD
	Q8	20	0.16%	1,638,813.11 AUD	0.44%	18	1,539,031.95 AUD	2	99,781.16 AUD
	R8	6	0.05%	806,029.35 AUD	0.22%	6	806,029.35 AUD	-	- AUD
	TT	7	0.06%	249,755.83 AUD	0.07%	5	205,122.24 AUD	2	44,633.59 AUD
	SubTotal	1,397	11.39%	54,809,944.95 AUD	14.72%	842	37,607,206.04 AUD	555	17,202,738.91 AUD
BENTLEY	BENTAYGA	2	0.02%	477,201.38 AUD	0.13%	2	477,201.38 AUD	-	- AUD
	CONTINENTAL	4	0.03%	508,954.62 AUD	0.14%	3	443,700.37 AUD	1	65,254.25 AUD
	SubTotal	6	0.05%	986,156.00 AUD	0.26%	5	920,901.75 AUD	1	65,254.25 AUD
LAMBORGHINI	AVENTADOR	1	0.01%	332,873.44 AUD	0.09%	1	332,873.44 AUD	-	- AUD
	HURACAN	3	0.02%	863,629.78 AUD	0.23%	3	863,629.78 AUD	-	- AUD
	URUS	2	0.02%	576,470.00 AUD	0.15%	1	318,147.11 AUD	1	258,322.89 AUD
	SubTotal	6	0.05%	1,772,973.22 AUD	0.48%	5	1,514,650.33 AUD	1	258,322.89 AUD
PORSCHE	BOXSTER	8	0.07%	795,491.99 AUD	0.21%	8	795,491.99 AUD	-	- AUD
	CARRERA / 911	21	0.17%	3,888,304.02 AUD	1.04%	19	3,666,124.36 AUD	2	222,179.66 AUD
	CAYENNE	75	0.61%	6,373,087.38 AUD	1.71%	67	6,000,386.08 AUD	8	372,701.30 AUD
	CAYMAN	1	0.01%	78,593.95 AUD	0.02%	-	- AUD	1	78,593.95 AUD
	MACAN	103	0.84%	7,244,679.68 AUD	1.95%	95	6,625,294.05 AUD	8	619,385.63 AUD
	PANAMERA	-	0.00%	- AUD	0.00%	-	- AUD	-	- AUD
	TAYCAN	13	0.11%	2,166,933.91 AUD	0.58%	13	2,166,933.91 AUD	-	- AUD
	SubTotal	221	1.80%	20,547,090.93 AUD	5.52%	202	19,254,230.39 AUD	19	1,292,860.54 AUD
SKODA	FABIA	37	0.30%	503,131.76 AUD	0.14%	10	175,471.04 AUD	27	327,660.72 AUD
	KAROQ	53	0.43%	1,080,857.69 AUD	0.29%	20	364,171.72 AUD	33	716,685.97 AUD
	KODIAQ	103	0.84%	3,047,709.96 AUD	0.82%	41	1,308,355.49 AUD	62	1,739,354.47 AUD
	KAMIQ	67	0.55%	1,309,604.16 AUD	0.35%	17	287,727.61 AUD	50	1,021,876.55 AUD
	SCALA	40	0.33%	772,577.25 AUD	0.21%	11	228,408.28 AUD	29	544,168.97 AUD
	OCTAVIA	97	0.79%	2,111,565.47 AUD	0.57%	22	459,070.73 AUD	75	1,652,494.74 AUD
	RAPID	1	0.01%	5,424.04 AUD	0.00%	-	- AUD	1	5,424.04 AUD
	SUPERB	22	0.18%	651,325.97 AUD	0.17%	11	360,060.86 AUD	11	291,265.11 AUD
	SubTotal	420	3.42%	9,482,196.30 AUD	2.55%	132	3,183,265.73 AUD	288	6,298,930.57 AUD
VOLKSWAGEN	AMAROK	708	5.77%	20,878,909.66 AUD	5.61%	552	16,577,587.95 AUD	156	4,301,321.71 AUD
	ARTEON	6	0.05%	213,796.36 AUD	0.06%	2	76,882.02 AUD	4	136,914.34 AUD
	CADDY	91	0.74%	1,621,524.92 AUD	0.44%	86	1,571,173.26 AUD	5	50,351.66 AUD
	CARAVELLE	2	0.02%	56,677.30 AUD	0.02%	2	56,677.30 AUD	-	- AUD
	CRAFTER	129	1.05%	3,698,945.92 AUD	0.99%	126	3,595,994.39 AUD	3	102,951.53 AUD
	GOLF	390	3.18%	6,889,820.73 AUD	1.85%	143	2,810,415.22 AUD	247	4,079,405.51 AUD
	JETTA	8	0.07%	33,670.11 AUD	0.01%	2	6,308.47 AUD	6	27,361.64 AUD
	MULTIVAN	34	0.28%	1,216,319.09 AUD	0.33%	21	848,404.05 AUD	13	367,915.04 AUD
	NEW BEETLE	4	0.03%	36,530.90 AUD	0.01%	1	14,448.23 AUD	3	22,082.67 AUD
	PASSAT	39	0.32%	878,680.66 AUD	0.24%	17	294,238.08 AUD	22	584,442.58 AUD
	POLO	158	1.29%	2,045,097.14 AUD	0.55%	49	643,631.21 AUD	109	1,401,465.93 AUD
	SCIROCCO	1	0.01%	20,077.70 AUD	0.01%	-	- AUD	1	20,077.70 AUD
	T-CROSS	155	1.26%	2,953,803.76 AUD	0.79%	47	922,120.73 AUD	108	2,031,683.03 AUD
	T-ROC	98	0.80%	2,379,801.97 AUD	0.64%	30	791,803.07 AUD	68	1,587,998.90 AUD
	TIGUAN	528	4.30%	13,553,706.56 AUD	3.64%	244	6,877,072.47 AUD	284	6,676,634.09 AUD
	TOUAREG	84	0.68%	4,281,573.88 AUD	1.15%	64	3,478,732.45 AUD	20	802,841.43 AUD

Pool Data VII

Distribution by Vehicle Brand and Models

Total Portfolio						Balloon				Vehicle Status				
Make	Model	Number of Contracts	Percentage of Contracts	Outstanding Discounted Receivables Balance	Percentage of Balance	Balloon		No Balloon		New		Used		
						Number of Contracts	Outstanding Discounted Receivables Balance	Number of Contracts	Outstanding Discounted Receivables Balance	Number of Contracts	Outstanding Discounted Receivables Balance	Number of Contracts	Outstanding Discounted Receivables Balance	
Volkswagen Group Vehicles														
AUDI	A1	48	0.39%	922,988.15 AUD	0.25%	12	377,482.63 AUD	36	545,505.52 AUD	25	687,171.52 AUD	23	235,816.63 AUD	
	A3	247	2.01%	7,756,397.01 AUD	2.08%	99	4,415,105.22 AUD	148	3,341,291.79 AUD	157	5,849,750.35 AUD	90	1,906,646.66 AUD	
	A4	113	0.92%	3,721,093.21 AUD	1.00%	43	1,948,906.07 AUD	70	1,772,187.14 AUD	72	2,928,680.39 AUD	41	792,412.82 AUD	
	A5	76	0.62%	3,071,329.34 AUD	0.82%	33	1,831,241.33 AUD	43	1,240,088.01 AUD	47	2,400,723.74 AUD	29	670,605.60 AUD	
	A6	27	0.22%	1,220,503.09 AUD	0.33%	8	552,260.12 AUD	19	668,242.97 AUD	14	887,304.30 AUD	13	333,198.79 AUD	
	A7	12	0.10%	929,964.18 AUD	0.25%	9	879,593.25 AUD	3	50,370.93 AUD	9	852,729.33 AUD	3	77,234.85 AUD	
	A8	3	0.02%	127,751.43 AUD	0.03%	-	- AUD	3	127,751.43 AUD	2	104,526.76 AUD	1	23,224.67 AUD	
	E-TRON	8	0.07%	759,215.75 AUD	0.20%	7	707,070.86 AUD	1	52,144.89 AUD	8	759,215.75 AUD	-	- AUD	
	Q2	87	0.71%	2,160,210.86 AUD	0.58%	35	1,098,155.99 AUD	52	1,062,054.87 AUD	65	1,757,003.44 AUD	22	403,207.42 AUD	
	Q3	257	2.09%	8,182,944.28 AUD	2.20%	101	4,221,478.46 AUD	156	3,961,465.82 AUD	215	7,455,125.14 AUD	42	727,819.14 AUD	
	Q5	272	2.22%	10,865,451.92 AUD	2.92%	129	6,615,312.20 AUD	143	4,250,139.72 AUD	189	8,759,105.68 AUD	83	2,106,346.24 AUD	
	Q7	214	1.74%	12,397,497.44 AUD	3.33%	107	8,189,688.17 AUD	107	4,207,809.27 AUD	132	9,563,743.87 AUD	82	2,833,753.57 AUD	
	Q8	20	0.16%	1,638,813.11 AUD	0.44%	11	1,065,692.85 AUD	9	573,120.26 AUD	17	1,475,215.32 AUD	3	163,597.79 AUD	
	R8	6	0.05%	806,029.35 AUD	0.22%	5	737,660.51 AUD	1	68,368.84 AUD	3	519,107.35 AUD	3	286,922.00 AUD	
	TT	7	0.06%	249,755.83 AUD	0.07%	3	173,694.05 AUD	4	76,061.78 AUD	1	108,234.49 AUD	6	141,521.34 AUD	
		SubTotal	1,397	11.39%	54,809,944.95 AUD	14.72%	602	32,813,341.71 AUD	795	21,996,603.24 AUD	956	44,107,637.43 AUD	441	10,702,307.52 AUD
	BENTLEY	BENTAYGA	2	0.02%	477,201.38 AUD	0.13%	2	477,201.38 AUD	-	- AUD	1	296,915.65 AUD	1	180,285.73 AUD
CONTINENTAL		4	0.03%	508,954.62 AUD	0.14%	1	172,256.77 AUD	3	336,697.85 AUD	-	- AUD	4	508,954.62 AUD	
SubTotal		6	0.05%	986,156.00 AUD	0.26%	3	649,458.15 AUD	3	336,697.85 AUD	1	296,915.65 AUD	5	689,240.35 AUD	
LAMBORGHINI	AVENTADOR	1	0.01%	332,873.44 AUD	0.09%	1	332,873.44 AUD	-	- AUD	-	- AUD	1	332,873.44 AUD	
	HURACAN	3	0.02%	863,629.78 AUD	0.23%	2	726,081.36 AUD	1	137,548.42 AUD	2	726,081.36 AUD	1	137,548.42 AUD	
	URUS	2	0.02%	576,470.00 AUD	0.15%	2	576,470.00 AUD	-	- AUD	2	576,470.00 AUD	-	- AUD	
	SubTotal	6	0.05%	1,772,973.22 AUD	0.48%	5	1,635,424.80 AUD	1	137,548.42 AUD	4	1,302,551.36 AUD	2	470,421.86 AUD	
PORSCHE	BOXSTER	8	0.07%	795,491.99 AUD	0.21%	7	745,385.83 AUD	1	50,106.16 AUD	6	709,522.53 AUD	2	85,969.46 AUD	
	CARRERA / 911	21	0.17%	3,888,304.02 AUD	1.04%	19	3,765,406.45 AUD	2	122,897.57 AUD	15	3,187,347.47 AUD	6	700,956.55 AUD	
	CAYENNE	75	0.61%	6,373,087.38 AUD	1.71%	51	5,143,255.33 AUD	24	1,229,832.05 AUD	62	5,743,920.91 AUD	13	629,166.47 AUD	
	CAYMAN	1	0.01%	78,593.95 AUD	0.02%	-	- AUD	1	78,593.95 AUD	-	- AUD	1	78,593.95 AUD	
	MACAN	103	0.84%	7,244,679.68 AUD	1.95%	72	5,690,068.00 AUD	31	1,554,611.68 AUD	86	6,495,004.22 AUD	17	749,675.46 AUD	
	PANAMERA	-	0.00%	- AUD	0.00%	-	- AUD	-	- AUD	-	- AUD	-	- AUD	
	TAYCAN	13	0.11%	2,166,933.91 AUD	0.58%	13	2,166,933.91 AUD	-	- AUD	13	2,166,933.91 AUD	-	- AUD	
	SubTotal	221	1.80%	20,547,090.93 AUD	5.52%	162	17,511,049.52 AUD	59	3,036,041.41 AUD	182	18,302,729.04 AUD	39	2,244,361.89 AUD	
	SKODA	FABIA	37	0.30%	503,131.76 AUD	0.14%	2	41,109.85 AUD	35	462,021.91 AUD	34	485,322.18 AUD	3	17,809.58 AUD
		KAROQ	53	0.43%	1,080,857.69 AUD	0.29%	8	181,193.69 AUD	45	899,664.00 AUD	53	1,080,857.69 AUD	-	- AUD
KODIAQ		103	0.84%	3,047,709.96 AUD	0.82%	27	1,007,854.14 AUD	76	2,039,855.82 AUD	94	2,885,651.81 AUD	9	162,058.15 AUD	
KAMIQ		67	0.55%	1,309,604.16 AUD	0.35%	5	133,920.74 AUD	62	1,175,683.42 AUD	67	1,309,604.16 AUD	-	- AUD	
SCALA		40	0.33%	772,577.25 AUD	0.21%	8	177,939.60 AUD	32	594,637.65 AUD	40	772,577.25 AUD	-	- AUD	
OCTAVIA		97	0.79%	2,111,565.47 AUD	0.57%	26	838,823.75 AUD	71	1,272,741.72 AUD	87	1,974,759.14 AUD	10	136,806.33 AUD	
RAPID		1	0.01%	5,424.04 AUD	0.00%	-	- AUD	1	5,424.04 AUD	1	5,424.04 AUD	-	- AUD	
SUPERB		22	0.18%	651,325.97 AUD	0.17%	9	369,315.01 AUD	13	282,010.96 AUD	17	581,035.37 AUD	5	70,290.60 AUD	
SubTotal		420	3.42%	9,482,196.30 AUD	2.55%	85	2,750,156.78 AUD	335	6,732,039.52 AUD	393	9,095,231.64 AUD	27	386,954.66 AUD	
VOLKSWAGEN		AMAROK	708	5.77%	20,878,909.66 AUD	5.61%	258	9,895,415.51 AUD	450	10,983,494.15 AUD	585	18,184,765.03 AUD	123	2,694,144.63 AUD
		ARTEON	6	0.05%	213,796.36 AUD	0.06%	5	192,136.41 AUD	1	21,659.95 AUD	2	70,725.85 AUD	4	143,070.51 AUD
		CADDY	91	0.74%	1,621,524.92 AUD	0.44%	22	552,395.97 AUD	69	1,069,128.95 AUD	73	1,391,310.79 AUD	18	230,214.13 AUD
	CARAVELLE	2	0.02%	56,677.30 AUD	0.02%	-	- AUD	2	56,677.30 AUD	2	56,677.30 AUD	-	- AUD	
	CRAFTER	129	1.05%	3,698,945.92 AUD	0.99%	37	1,395,874.43 AUD	92	2,303,071.49 AUD	125	3,618,290.75 AUD	4	80,655.17 AUD	
	GOLF	390	3.18%	6,889,820.73 AUD	1.85%	98	2,548,042.78 AUD	292	4,341,777.95 AUD	250	5,055,895.59 AUD	140	1,833,925.14 AUD	
	JETTA	8	0.07%	33,670.11 AUD	0.01%	-	- AUD	8	33,670.11 AUD	-	- AUD	8	33,670.11 AUD	
	MULTIVAN	34	0.28%	1,216,319.09 AUD	0.33%	11	555,479.56 AUD	23	660,839.53 AUD	23	941,245.97 AUD	11	275,073.12 AUD	
	NEW BEETLE	4	0.03%	36,530.90 AUD	0.01%	-	- AUD	4	36,530.90 AUD	-	- AUD	4	36,530.90 AUD	
	PASSAT	39	0.32%	878,680.66 AUD	0.24%	12	401,112.46 AUD	27	477,568.20 AUD	20	629,639.91 AUD	19	249,040.75 AUD	
	POLO	158	1.29%	2,045,097.14 AUD	0.55%	21	400,185.04 AUD	137	1,644,912.10 AUD	137	1,912,871.63 AUD	21	132,225.51 AUD	
	SCIROCCO	1	0.01%	20,077.70 AUD	0.01%	-	- AUD	1	20,077.70 AUD	-	- AUD	1	20,077.70 AUD	
	T-CROSS	155	1.26%	2,953,803.76 AUD	0.79%	24	557,783.76 AUD	131	2,396,020.00 AUD	155	2,953,803.76 AUD	-	- AUD	
	T-ROC	98	0.80%	2,379,801.97 AUD	0.64%	20	605,787.92 AUD	78	1,774,014.05 AUD	98	2,379,801.97 AUD	-	- AUD	
	TIGUAN	528	4.30%	13,553,706.56 AUD	3.64%	156	5,286,788.48 AUD	372	8,266,918.08 AUD	455	12,185,592.89 AUD	73	1,368,113.67 AUD	
	TouAREG	84	0.68%	4,281,573.88 AUD	1.15%	39	2,718,582.79 AUD	45	1,562,991.09 AUD	63	3,752,061.72 AUD	21	529,512.16 AUD	

Pool Data VII

Distribution by Vehicle Brand and Models

Total Portfolio						Product Type			
Make	Model	Number of Contracts	Percentage of Contracts	Outstanding Discounted Receivables Balance	Percentage of Balance	Chattel Mortgage		Consumer Loan	
						Number of Contracts	Outstanding Discounted Receivables Balance	Number of Contracts	Outstanding Discounted Receivables Balance
	TRANSPORTER	112	0.91%	3,291,562.35 AUD	0.88%	98	2,782,710.96 AUD	14	508,851.39 AUD
	UP!	-	0.00%	- AUD	0.00%	-	- AUD	-	- AUD
	SubTotal	2,547	20.76%	64,050,499.01 AUD	17.20%	1,484	41,348,199.86 AUD	1,063	22,702,299.15 AUD
Volkswagen Group Vehicles	SubTotal	4,597	37.47%	151,648,860.41 AUD	40.71%	2,670	103,828,454.10 AUD	1,927	47,820,406.31 AUD

Pool Data VII

Distribution by Vehicle Brand and Models

Total Portfolio						Balloon				Vehicle Status			
Make	Model	Number of Contracts	Percentage of Contracts	Outstanding Discounted Receivables Balance	Percentage of Balance	Balloon		No Balloon		New		Used	
						Number of Contracts	Outstanding Discounted Receivables Balance	Number of Contracts	Outstanding Discounted Receivables Balance	Number of Contracts	Outstanding Discounted Receivables Balance	Number of Contracts	Outstanding Discounted Receivables Balance
	TRANSPORTER	112	0.91%	3,291,562.35 AUD	0.88%	36	1,428,218.14 AUD	76	1,863,344.21 AUD	94	3,000,419.88 AUD	18	291,142.47 AUD
	UP!	-	0.00%	- AUD	0.00%	-	- AUD	-	- AUD	-	- AUD	-	- AUD
	SubTotal	2,547	20.76%	64,050,499.01 AUD	17.20%	739	26,537,803.25 AUD	1,808	37,512,695.76 AUD	2,082	56,133,103.04 AUD	465	7,917,395.97 AUD
Volkswagen Group Vehicles	SubTotal	4,597	37.47%	151,648,860.41 AUD	40.71%	1,596	81,897,234.21 AUD	3,001	69,751,626.20 AUD	3,618	129,238,168.16 AUD	979	22,410,692.25 AUD



Pool Data VII

Distribution by Vehicle Brand and Models

Total Portfolio						Product Type			
Make	Model	Number of Contracts	Percentage of Contracts	Outstanding Discounted Receivables Balance	Percentage of Balance	Chattel Mortgage		Consumer Loan	
						Number of Contracts	Outstanding Discounted Receivables Balance	Number of Contracts	Outstanding Discounted Receivables Balance
Other Vehicles									
ABARTH		13	0.11%	298,417.14 AUD	0.08%	10	227,831.13 AUD	3	70,586.01 AUD
ALFA ROMEO		28	0.23%	1,003,052.16 AUD	0.27%	14	455,550.98 AUD	14	547,501.18 AUD
ASTON MARTIN		6	0.05%	927,787.18 AUD	0.25%	6	927,787.18 AUD	-	- AUD
BMW		128	1.04%	5,345,709.09 AUD	1.44%	101	4,593,302.14 AUD	27	752,406.95 AUD
CHEVROLET		24	0.20%	1,629,204.77 AUD	0.44%	22	1,480,819.45 AUD	2	148,385.32 AUD
CHRYSLER		5	0.04%	135,736.44 AUD	0.04%	2	90,752.35 AUD	3	44,984.09 AUD
CITROEN		5	0.04%	44,624.57 AUD	0.01%	4	42,337.40 AUD	1	2,287.17 AUD
DODGE		2	0.02%	13,787.10 AUD	0.00%	1	3,940.73 AUD	1	9,846.37 AUD
FERRARI		1	0.01%	173,465.18 AUD	0.05%	-	- AUD	1	173,465.18 AUD
FIAT		13	0.11%	209,952.47 AUD	0.06%	9	153,681.28 AUD	4	56,271.19 AUD
FORD		844	6.88%	26,663,430.73 AUD	7.16%	662	21,821,939.50 AUD	182	4,841,491.23 AUD
GENESIS		3	0.02%	189,281.96 AUD	0.05%	3	189,281.96 AUD	-	- AUD
GM		1	0.01%	66,841.51 AUD	0.02%	1	66,841.51 AUD	-	- AUD
GREAT WALL		16	0.13%	227,179.82 AUD	0.06%	11	159,585.78 AUD	5	67,594.04 AUD
GWM		52	0.42%	1,319,268.60 AUD	0.35%	38	912,469.21 AUD	14	406,799.39 AUD
HAVAL		59	0.48%	1,201,334.79 AUD	0.32%	32	624,747.09 AUD	27	576,587.70 AUD
HINO		1	0.01%	40,744.55 AUD	0.01%	1	40,744.55 AUD	-	- AUD
HOLDEN		279	2.27%	5,111,387.64 AUD	1.37%	144	2,768,972.75 AUD	135	2,342,414.89 AUD
HONDA		224	1.83%	4,310,510.28 AUD	1.16%	119	2,505,052.96 AUD	105	1,805,457.32 AUD
HYUNDAI		604	4.92%	11,942,398.06 AUD	3.21%	314	6,722,205.95 AUD	290	5,220,192.11 AUD
INFINITI		2	0.02%	28,775.49 AUD	0.01%	2	28,775.49 AUD	-	- AUD
ISUZU		263	2.14%	7,894,703.34 AUD	2.12%	185	5,426,559.32 AUD	78	2,468,144.02 AUD
JAGUAR		80	0.65%	3,784,554.25 AUD	1.02%	59	2,874,475.35 AUD	21	910,078.90 AUD
JEEP		131	1.07%	4,099,124.20 AUD	1.10%	88	3,003,480.54 AUD	43	1,095,643.66 AUD
KIA		353	2.88%	7,473,393.08 AUD	2.01%	210	4,915,303.57 AUD	143	2,558,089.51 AUD
LAND ROVER		530	4.32%	32,227,526.00 AUD	8.65%	403	26,177,207.20 AUD	127	6,050,318.80 AUD
LDV		237	1.93%	5,339,273.70 AUD	1.43%	206	4,600,102.60 AUD	31	739,171.10 AUD
LEXUS		11	0.09%	367,710.13 AUD	0.10%	11	367,710.13 AUD	-	- AUD
MAHINDRA		2	0.02%	15,216.08 AUD	0.00%	2	15,216.08 AUD	-	- AUD
MASERATI		23	0.19%	2,331,232.17 AUD	0.63%	21	2,198,962.44 AUD	2	132,269.73 AUD
MAZDA		519	4.23%	11,801,229.36 AUD	3.17%	336	8,235,760.31 AUD	183	3,565,469.05 AUD
MERCEDES-BENZ		297	2.42%	12,817,646.80 AUD	3.44%	244	11,032,698.87 AUD	53	1,784,947.93 AUD
MG		206	1.68%	3,330,168.93 AUD	0.89%	80	1,176,973.10 AUD	126	2,153,195.83 AUD
MINI		14	0.11%	374,233.78 AUD	0.10%	11	299,961.73 AUD	3	74,272.05 AUD
MITSUBISHI		769	6.27%	16,722,448.43 AUD	4.49%	431	9,455,198.01 AUD	338	7,267,250.42 AUD
NISSAN		358	2.92%	9,022,587.68 AUD	2.42%	239	6,445,875.60 AUD	119	2,576,712.08 AUD
OPEL		1	0.01%	9,729.16 AUD	0.00%	-	- AUD	1	9,729.16 AUD
PEUGEOT		61	0.50%	1,533,566.63 AUD	0.41%	48	1,138,778.22 AUD	13	394,788.41 AUD
RAM		1	0.01%	89,148.10 AUD	0.02%	1	89,148.10 AUD	-	- AUD
RENAULT		149	1.21%	3,812,200.23 AUD	1.02%	128	3,406,049.98 AUD	21	406,150.25 AUD
ROLLS-ROYCE		2	0.02%	335,554.78 AUD	0.09%	2	335,554.78 AUD	-	- AUD
SSANGYONG		28	0.23%	706,777.77 AUD	0.19%	20	472,325.11 AUD	8	234,452.66 AUD
SUBARU		361	2.94%	8,013,431.20 AUD	2.15%	193	4,422,434.13 AUD	168	3,590,997.07 AUD
SUZUKI		136	1.11%	2,005,224.14 AUD	0.54%	47	706,188.58 AUD	89	1,299,035.56 AUD
TESLA		18	0.15%	920,047.55 AUD	0.25%	18	920,047.55 AUD	-	- AUD
TOYOTA		652	5.31%	18,176,189.24 AUD	4.88%	480	13,926,141.08 AUD	172	4,250,048.16 AUD
VOLVO		159	1.30%	6,730,782.52 AUD	1.81%	107	4,738,649.89 AUD	52	1,992,132.63 AUD
Other Vehicles	SubTotal	7,671	62.53%	220,816,588.78 AUD	59.29%	5,066	160,197,421.66 AUD	2,605	60,619,167.12 AUD
Total		12,268	100.00%	372,465,449.19 AUD	100.00%	7,736	264,025,875.76 AUD	4,532	108,439,573.43 AUD

Pool Data VII

Distribution by Vehicle Brand and Models

Total Portfolio						Balloon				Vehicle Status			
Make	Model	Number of Contracts	Percentage of Contracts	Outstanding Discounted Receivables Balance	Percentage of Balance	Balloon		No Balloon		New		Used	
						Number of Contracts	Outstanding Discounted Receivables Balance	Number of Contracts	Outstanding Discounted Receivables Balance	Number of Contracts	Outstanding Discounted Receivables Balance	Number of Contracts	Outstanding Discounted Receivables Balance
Other Vehicles													
ABARTH		13	0.11%	298,417.14 AUD	0.08%	8	201,746.21 AUD	5	96,670.93 AUD	8	201,746.21 AUD	5	96,670.93 AUD
ALFA ROMEO		28	0.23%	1,003,052.16 AUD	0.27%	17	722,796.75 AUD	11	280,255.41 AUD	22	829,858.10 AUD	6	173,194.06 AUD
ASTON MARTIN		6	0.05%	927,787.18 AUD	0.25%	5	873,298.14 AUD	1	54,489.04 AUD	2	475,607.30 AUD	4	452,179.88 AUD
BMW		128	1.04%	5,345,709.09 AUD	1.44%	57	3,306,276.79 AUD	71	2,039,432.30 AUD	56	3,108,793.63 AUD	72	2,236,915.46 AUD
CHEVROLET		24	0.20%	1,629,204.77 AUD	0.44%	14	1,056,278.65 AUD	10	572,926.12 AUD	23	1,565,349.11 AUD	1	63,855.66 AUD
CHRYSLER		5	0.04%	135,736.44 AUD	0.04%	1	57,744.19 AUD	4	77,992.25 AUD	2	90,752.35 AUD	3	44,984.09 AUD
CITROEN		5	0.04%	44,624.57 AUD	0.01%	1	4,610.09 AUD	4	40,014.48 AUD	2	23,278.31 AUD	3	21,346.26 AUD
DODGE		2	0.02%	13,787.10 AUD	0.00%	-	- AUD	2	13,787.10 AUD	-	- AUD	2	13,787.10 AUD
FERRARI		1	0.01%	173,465.18 AUD	0.05%	1	173,465.18 AUD	-	- AUD	-	- AUD	1	173,465.18 AUD
FIAT		13	0.11%	209,952.47 AUD	0.06%	3	76,126.83 AUD	10	133,825.64 AUD	9	156,451.44 AUD	4	53,501.03 AUD
FORD		844	6.88%	26,663,430.73 AUD	7.16%	235	9,772,062.94 AUD	609	16,891,367.79 AUD	562	19,965,292.16 AUD	282	6,698,138.57 AUD
GENESIS		3	0.02%	189,281.96 AUD	0.05%	2	143,552.25 AUD	1	45,729.71 AUD	3	189,281.96 AUD	-	- AUD
GM		1	0.01%	66,841.51 AUD	0.02%	1	66,841.51 AUD	-	- AUD	1	66,841.51 AUD	-	- AUD
GREAT WALL		16	0.13%	227,179.82 AUD	0.06%	2	42,315.63 AUD	14	184,864.19 AUD	15	217,371.44 AUD	1	9,808.38 AUD
GWM		52	0.42%	1,319,268.60 AUD	0.35%	9	252,378.66 AUD	43	1,066,889.94 AUD	52	1,319,268.60 AUD	-	- AUD
HAVAL		59	0.48%	1,201,334.79 AUD	0.32%	3	90,527.78 AUD	56	1,110,807.01 AUD	59	1,201,334.79 AUD	-	- AUD
HINO		1	0.01%	40,744.55 AUD	0.01%	1	40,744.55 AUD	-	- AUD	1	40,744.55 AUD	-	- AUD
HOLDEN		279	2.27%	5,111,387.64 AUD	1.37%	23	596,176.16 AUD	256	4,515,211.48 AUD	64	1,325,965.24 AUD	215	3,785,422.40 AUD
HONDA		224	1.83%	4,310,510.28 AUD	1.16%	33	974,272.93 AUD	191	3,336,237.35 AUD	163	3,456,910.38 AUD	61	853,599.90 AUD
HYUNDAI		604	4.92%	11,942,398.06 AUD	3.21%	88	2,685,502.56 AUD	516	9,256,895.50 AUD	418	9,409,003.67 AUD	186	2,533,394.39 AUD
INFINITI		2	0.02%	28,775.49 AUD	0.01%	-	- AUD	2	28,775.49 AUD	-	- AUD	2	28,775.49 AUD
ISUZU		263	2.14%	7,894,703.34 AUD	2.12%	54	1,944,571.80 AUD	209	5,950,131.54 AUD	214	6,937,290.53 AUD	49	957,412.81 AUD
JAGUAR		80	0.65%	3,784,554.25 AUD	1.02%	46	2,731,651.20 AUD	34	1,052,903.05 AUD	57	3,007,307.05 AUD	23	777,247.20 AUD
JEEP		131	1.07%	4,099,124.20 AUD	1.10%	35	1,687,801.33 AUD	96	2,411,322.87 AUD	75	2,917,033.65 AUD	56	1,182,090.55 AUD
KIA		353	2.88%	7,473,393.08 AUD	2.01%	63	2,054,580.36 AUD	290	5,418,812.72 AUD	271	6,210,449.22 AUD	82	1,262,943.86 AUD
LAND ROVER		530	4.32%	32,227,526.00 AUD	8.65%	308	22,967,563.53 AUD	222	9,259,962.47 AUD	388	26,144,821.87 AUD	142	6,082,704.13 AUD
LDV		237	1.93%	5,339,273.70 AUD	1.43%	47	1,268,073.74 AUD	190	4,071,199.96 AUD	230	5,223,977.30 AUD	7	115,296.40 AUD
LEXUS		11	0.09%	367,710.13 AUD	0.10%	6	236,972.50 AUD	5	130,737.63 AUD	5	197,787.17 AUD	6	169,922.96 AUD
MAHINDRA		2	0.02%	15,216.08 AUD	0.00%	-	- AUD	2	15,216.08 AUD	2	15,216.08 AUD	-	- AUD
MASERATI		23	0.19%	2,331,232.17 AUD	0.63%	18	2,070,813.90 AUD	5	260,418.27 AUD	18	2,032,439.62 AUD	5	298,792.55 AUD
MAZDA		519	4.23%	11,801,229.36 AUD	3.17%	113	3,888,644.05 AUD	406	7,912,585.31 AUD	369	9,504,005.32 AUD	150	2,297,224.04 AUD
MERCEDES-BENZ		297	2.42%	12,817,646.80 AUD	3.44%	114	6,697,914.18 AUD	183	6,119,732.62 AUD	141	7,954,828.92 AUD	156	4,862,817.88 AUD
MG		206	1.68%	3,330,168.93 AUD	0.89%	13	323,687.17 AUD	193	3,006,481.76 AUD	200	3,243,434.46 AUD	6	86,734.47 AUD
MINI		14	0.11%	374,233.78 AUD	0.10%	5	184,811.35 AUD	9	189,422.43 AUD	6	247,500.82 AUD	8	126,732.96 AUD
MITSUBISHI		769	6.27%	16,722,448.43 AUD	4.49%	106	3,277,100.39 AUD	663	13,445,348.04 AUD	558	13,226,618.33 AUD	211	3,495,830.10 AUD
NISSAN		358	2.92%	9,022,587.68 AUD	2.42%	66	2,461,045.01 AUD	292	6,561,542.67 AUD	209	6,438,354.47 AUD	149	2,584,233.21 AUD
OPEL		1	0.01%	9,729.16 AUD	0.00%	-	- AUD	1	9,729.16 AUD	-	- AUD	1	9,729.16 AUD
PEUGEOT		61	0.50%	1,533,566.63 AUD	0.41%	19	642,315.02 AUD	42	891,251.61 AUD	58	1,484,003.94 AUD	3	49,562.69 AUD
RAM		1	0.01%	89,148.10 AUD	0.02%	1	89,148.10 AUD	-	- AUD	-	- AUD	1	89,148.10 AUD
RENAULT		149	1.21%	3,812,200.23 AUD	1.02%	52	1,696,863.18 AUD	97	2,115,337.05 AUD	126	3,411,547.70 AUD	23	400,652.53 AUD
ROLLS-ROYCE		2	0.02%	335,554.78 AUD	0.09%	1	210,728.97 AUD	1	124,825.81 AUD	1	210,728.97 AUD	1	124,825.81 AUD
SSANGYONG		28	0.23%	706,777.77 AUD	0.19%	5	162,091.51 AUD	23	544,686.26 AUD	27	667,194.45 AUD	1	39,583.32 AUD
SUBARU		361	2.94%	8,013,431.20 AUD	2.15%	84	2,555,520.59 AUD	277	5,457,910.61 AUD	266	6,512,814.03 AUD	95	1,500,617.17 AUD
SUZUKI		136	1.11%	2,005,224.14 AUD	0.54%	8	147,088.30 AUD	128	1,858,135.84 AUD	100	1,613,672.41 AUD	36	391,551.73 AUD
TESLA		18	0.15%	920,047.55 AUD	0.25%	11	605,234.46 AUD	7	314,813.09 AUD	18	920,047.55 AUD	-	- AUD
TOYOTA		652	5.31%	18,176,189.24 AUD	4.88%	122	5,477,874.48 AUD	530	12,698,314.76 AUD	223	7,450,591.80 AUD	429	10,725,597.44 AUD
VOLVO		159	1.30%	6,730,782.52 AUD	1.81%	90	4,653,660.14 AUD	69	2,077,122.38 AUD	135	6,002,878.20 AUD	24	727,904.32 AUD
Other Vehicles	SubTotal	7,671	62.53%	220,816,588.78 AUD	59.29%	1,891	89,172,473.06 AUD	5,780	131,644,115.72 AUD	5,159	165,218,394.61 AUD	2,512	55,598,194.17 AUD
Total		12,268	100.00%	372,465,449.19 AUD	100.00%	3,487	171,069,707.27 AUD	8,781	201,395,741.92 AUD	8,777	294,456,562.77 AUD	3,491	78,008,886.42 AUD

**Pool Data VIII**

**Region**

Total Portfolio					Product Type			
Region	Number of Contracts	Percentage of Contracts	Outstanding Discounted Receivables Balance	Percentage of Balance	Chattel Mortgage		Consumer Loan	
					Number of Contracts	Outstanding Discounted Receivables Balance	Number of Contracts	Outstanding Discounted Receivables Balance
Australian Capital Territory	362	2.95%	9,737,347.79 AUD	2.61%	143	5,016,455.88 AUD	219	4,720,891.91 AUD
New South Wales	4,407	35.92%	140,085,927.56 AUD	37.61%	2,908	103,405,564.20 AUD	1,499	36,680,363.36 AUD
Northern Territory	97	0.79%	2,106,422.78 AUD	0.57%	37	899,765.11 AUD	60	1,206,657.67 AUD
Queensland	2,625	21.40%	78,274,012.32 AUD	21.02%	1,785	57,427,418.77 AUD	840	20,846,593.55 AUD
South Australia	515	4.20%	16,914,337.37 AUD	4.54%	355	12,683,588.50 AUD	160	4,230,748.87 AUD
Tasmania	443	3.61%	10,428,904.45 AUD	2.80%	191	5,388,292.01 AUD	252	5,040,612.44 AUD
Victoria	2,395	19.52%	75,671,648.19 AUD	20.32%	1,491	54,432,297.56 AUD	904	21,239,350.63 AUD
Western Australia	1,424	11.61%	39,246,848.73 AUD	10.54%	826	24,772,493.73 AUD	598	14,474,355.00 AUD
<b>Total</b>	<b>12,268</b>	<b>100.00%</b>	<b>372,465,449.19 AUD</b>	<b>100.00%</b>	<b>7,736</b>	<b>264,025,875.76 AUD</b>	<b>4,532</b>	<b>108,439,573.43 AUD</b>

Pool Data VIII

Region

Total Portfolio					Balloon				Vehicle Status			
Region	Number of Contracts	Percentage of Contracts	Outstanding Discounted Receivables Balance	Percentage of Balance	Balloon		No Balloon		New		Used	
					Number of Contracts	Outstanding Discounted Receivables Balance	Number of Contracts	Outstanding Discounted Receivables Balance	Number of Contracts	Outstanding Discounted Receivables Balance	Number of Contracts	Outstanding Discounted Receivables Balance
Australian Capital Territory	362	2.95%	9,737,347.79 AUD	2.61%	73	3,549,867.39 AUD	289	6,187,480.40 AUD	224	7,184,501.45 AUD	138	2,552,846.34 AUD
New South Wales	4,407	35.92%	140,085,927.56 AUD	37.61%	1,331	68,643,230.76 AUD	3,076	71,442,696.80 AUD	3,253	113,039,450.74 AUD	1,154	27,046,476.82 AUD
Northern Territory	97	0.79%	2,106,422.78 AUD	0.57%	4	149,718.09 AUD	93	1,956,704.69 AUD	79	1,749,210.28 AUD	18	357,212.50 AUD
Queensland	2,625	21.40%	78,274,012.32 AUD	21.02%	757	35,059,650.00 AUD	1,868	43,214,362.32 AUD	2,031	65,516,922.51 AUD	594	12,757,089.81 AUD
South Australia	515	4.20%	16,914,337.37 AUD	4.54%	189	9,429,390.15 AUD	326	7,484,947.22 AUD	383	14,040,094.34 AUD	132	2,874,243.03 AUD
Tasmania	443	3.61%	10,428,904.45 AUD	2.80%	72	2,702,413.90 AUD	371	7,726,490.55 AUD	234	6,036,067.15 AUD	209	4,392,837.30 AUD
Victoria	2,395	19.52%	75,671,648.19 AUD	20.32%	860	41,266,282.48 AUD	1,535	34,405,365.71 AUD	1,831	63,205,235.27 AUD	564	12,466,412.92 AUD
Western Australia	1,424	11.61%	39,246,848.73 AUD	10.54%	201	10,269,154.50 AUD	1,223	28,977,694.23 AUD	742	23,685,081.03 AUD	682	15,561,767.70 AUD
<b>Total</b>	<b>12,268</b>	<b>100.00%</b>	<b>372,465,449.19 AUD</b>	<b>100.00%</b>	<b>3,487</b>	<b>171,069,707.27 AUD</b>	<b>8,781</b>	<b>201,395,741.92 AUD</b>	<b>8,777</b>	<b>294,456,562.77 AUD</b>	<b>3,491</b>	<b>78,008,886.42 AUD</b>

Pool Data IX

Current COVID-19 Extensions

Total Portfolio					Product Type			
Current COVID-19 Extensions	Number of Contracts	Percentage of Contracts	Outstanding Discounted Receivables Balance	Percentage of Balance	Chattel Mortgage		Consumer Loan	
					Number of Contracts	Outstanding Discounted Receivables Balance	Number of Contracts	Outstanding Discounted Receivables Balance
Current COVID-19 Extension	26	0.21%	983,721.06 AUD	0.26%	15	687,940.18 AUD	11	295,780.88 AUD
No Current Extension	12,242	99.79%	371,481,728.13 AUD	99.74%	7,721	263,337,935.58 AUD	4,521	108,143,792.55 AUD
<b>Total</b>	<b>12,268</b>	<b>100.00%</b>	<b>372,465,449.19 AUD</b>	<b>100.00%</b>	<b>7,736</b>	<b>264,025,875.76 AUD</b>	<b>4,532</b>	<b>108,439,573.43 AUD</b>

\* Representing contracts which are currently in a COVID-19 extension as at the Reporting Date

Pool Data IX

Current COVID-19 Extensions

Total Portfolio					Balloon				Vehicle Status			
Current COVID-19 Extensions	Number of Contracts	Percentage of Contracts	Outstanding Discounted Receivables Balance	Percentage of Balance	Balloon		No Balloon		New		Used	
					Number of Contracts	Outstanding Discounted Receivables Balance	Number of Contracts	Outstanding Discounted Receivables Balance	Number of Contracts	Outstanding Discounted Receivables Balance	Number of Contracts	Outstanding Discounted Receivables Balance
Current COVID-19 Extension	26	0.21%	983,721.06 AUD	0.26%	7	327,257.90 AUD	19	656,463.16 AUD	17	768,815.68 AUD	9	214,905.38 AUD
No Current Extension	12,242	99.79%	371,481,728.13 AUD	99.74%	3,480	170,742,449.37 AUD	8,762	200,739,278.76 AUD	8,760	293,687,747.09 AUD	3,482	77,793,981.04 AUD
<b>Total</b>	<b>12,268</b>	<b>100.00%</b>	<b>372,465,449.19 AUD</b>	<b>100.00%</b>	<b>3,487</b>	<b>171,069,707.27 AUD</b>	<b>8,781</b>	<b>201,395,741.92 AUD</b>	<b>8,777</b>	<b>294,456,562.77 AUD</b>	<b>3,491</b>	<b>78,008,886.42 AUD</b>

\* Representing contracts which are currently in a COVID-19 extension as at the Reporting Date

### Individual Hardship Extensions\*

Individual Extensions Approved For After Poolcut*	Number of Contracts	Percentage of Contracts	Outstanding Discounted Receivables Balance	Percentage of Balance
None	12,164	99.15%	368,645,568.27 AUD	98.97%
1	87	0.71%	3,210,205.19 AUD	0.86%
2	16	0.13%	573,285.00 AUD	0.15%
3	1	0.01%	36,390.73 AUD	0.01%
4	-	0.00%	0.00 AUD	0.00%
5	-	0.00%	0.00 AUD	0.00%
<b>Total</b>	<b>12,268</b>	<b>100.00%</b>	<b>372,465,449.19 AUD</b>	<b>100.00%</b>

\*Individual Hardship Extensions Approved For After Poolcut For Contracts Active At End of Reporting Period

## Engine Type

Total Portfolio					Product Type			
Engine Type	Number of Contracts	Percentage of Contracts	Outstanding Discounted Receivables Balance	Percentage of Balance	Chattel Mortgage		Consumer Loan	
					Number of Contracts	Outstanding Discounted Receivables Balance	Number of Contracts	Outstanding Discounted Receivables Balance
EA 189 (Unfixed)	2	0.02%	15,274.36 AUD	0.00%	2	15,274.36 AUD	-	- AUD
Other	12,266	99.98%	372,450,174.83 AUD	100.00%	7,734	264,010,601.40 AUD	4,532	108,439,573.43 AUD
<b>Total</b>	<b>12,268</b>	<b>100.00%</b>	<b>372,465,449.19 AUD</b>	<b>100.00%</b>	<b>7,736</b>	<b>264,025,875.76 AUD</b>	<b>4,532</b>	<b>108,439,573.43 AUD</b>



Engine Type

Total Portfolio					Balloon				Vehicle Status			
Engine Type	Number of Contracts	Percentage of Contracts	Outstanding Discounted Receivables Balance	Percentage of Balance	Balloon		No Balloon		New		Used	
					Number of Contracts	Outstanding Discounted Receivables Balance	Number of Contracts	Outstanding Discounted Receivables Balance	Number of Contracts	Outstanding Discounted Receivables Balance	Number of Contracts	Outstanding Discounted Receivables Balance
EA 189 (Unfixed)	2	0.02%	15,274.36 AUD	0.00%	-	- AUD	2	15,274.36 AUD	-	- AUD	2	15,274.36 AUD
Other	12,266	99.98%	372,450,174.83 AUD	100.00%	3,487	171,069,707.27 AUD	8,779	201,380,467.56 AUD	8,777	294,456,562.77 AUD	3,489	77,993,612.06 AUD
<b>Total</b>	<b>12,268</b>	<b>100.00%</b>	<b>372,465,449.19 AUD</b>	<b>100.00%</b>	<b>3,487</b>	<b>171,069,707.27 AUD</b>	<b>8,781</b>	<b>201,395,741.92 AUD</b>	<b>8,777</b>	<b>294,456,562.77 AUD</b>	<b>3,491</b>	<b>78,008,886.42 AUD</b>

Contract Level Data

Net Salvage Recoveries By Contract By Month

No.	Month / Year of Origination	Month / Year of Net Salvage	Outstanding Discounted Receivables Balance at Poolcut	ABS Gross Salvage Loss	ABS Net Salvage Loss	ABS Recoveries After Net Salvage	ABS Net Salvage Loss After Recoveries	Loss Percentage on Poolcut Balance	Geographical Location of Borrower	Vehicle Type (New/Used)	Vehicle Manufacturer	Product Type
1	02/2021	07/2022	69,286.66 AUD	68,260.06 AUD	23,440.30 AUD	- AUD	23,440.30 AUD	33.83%	Queensland	New	HYUNDAI	Chattel Mortgage
2	04/2017	08/2022	4,908.02 AUD	1,802.96 AUD	1,802.96 AUD	2,382.04 AUD	(579.08) AUD	-11.80%	Western Australia	Used	TOYOTA	Consumer Loan
3	09/2020	08/2022	22,898.44 AUD	24,043.02 AUD	23,946.41 AUD	24,792.94 AUD	(846.53) AUD	-3.70%	New South Wales	New	HYUNDAI	Chattel Mortgage
4	11/2020	08/2022	85,150.75 AUD	88,290.47 AUD	26,227.05 AUD	- AUD	26,227.05 AUD	30.80%	New South Wales	Used	AUDI	Consumer Loan
5	03/2021	08/2022	29,185.09 AUD	28,877.00 AUD	5,729.99 AUD	- AUD	5,729.99 AUD	19.63%	Queensland	Used	AUDI	Chattel Mortgage
6	08/2021	09/2022	58,243.78 AUD	60,601.34 AUD	60,349.39 AUD	(656.00) AUD	61,005.39 AUD	104.74%	New South Wales	New	VOLVO	Consumer Loan
7	05/2017	10/2022	10,198.36 AUD	5,937.71 AUD	5,937.71 AUD	- AUD	5,937.71 AUD	58.22%	Western Australia	New	VOLKSWAGEN	Consumer Loan
8	04/2021	11/2022	112,349.37 AUD	113,836.61 AUD	113,836.61 AUD	- AUD	113,836.61 AUD	101.32%	New South Wales	Used	MERCEDES-BENZ	Chattel Mortgage
9	06/2021	11/2022	42,591.10 AUD	36,679.72 AUD	30,861.92 AUD	- AUD	30,861.92 AUD	72.46%	Victoria	Used	FORD	Chattel Mortgage
10	02/2020	12/2022	6,960.28 AUD	6,286.99 AUD	364.85 AUD	(135.89) AUD	500.74 AUD	7.19%	Queensland	Used	NISSAN	Chattel Mortgage
11	08/2021	12/2022	68,340.09 AUD	61,509.66 AUD	25,863.78 AUD	- AUD	25,863.78 AUD	37.85%	Victoria	New	FIAT	Chattel Mortgage
12	06/2021	01/2023	137,878.86 AUD	128,630.77 AUD	16,307.35 AUD	- AUD	16,307.35 AUD	11.83%	Western Australia	New	BMW	Chattel Mortgage
13	07/2021	01/2023	21,033.51 AUD	17,507.31 AUD	9,148.55 AUD	- AUD	9,148.55 AUD	43.50%	Western Australia	Used	MITSUBISHI	Chattel Mortgage
Total	15		663,024.81 AUD	642,213.12 AUD	343,610.67 AUD	26,383.09 AUD	317,433.78 AUD					

Contract Level Data

Net Salvage Recoveries By Contract By Month

No.	Month / Year of Origination	Month / Year of Net Salvage	Nov-21	Dec-21	Jan-22	Feb-22	Mar-22	Apr-22	May-22	Jun-22	Jul-22	Aug-22	Sep-22	Oct-22
1	02/2021	07/2022	- AUD	- AUD	- AUD	- AUD	- AUD	- AUD	- AUD	- AUD	- AUD	- AUD	- AUD	- AUD
2	04/2017	08/2022	- AUD	- AUD	- AUD	- AUD	- AUD	- AUD	- AUD	- AUD	- AUD	- AUD	- AUD	- AUD
3	09/2020	08/2022	- AUD	- AUD	- AUD	- AUD	- AUD	- AUD	- AUD	- AUD	- AUD	- AUD	- AUD	- AUD
4	11/2020	08/2022	- AUD	- AUD	- AUD	- AUD	- AUD	- AUD	- AUD	- AUD	- AUD	- AUD	(871.25) AUD	21,718.38 AUD
5	03/2021	08/2022	- AUD	- AUD	- AUD	- AUD	- AUD	- AUD	- AUD	- AUD	- AUD	- AUD	- AUD	- AUD
6	08/2021	09/2022	- AUD	- AUD	- AUD	- AUD	- AUD	- AUD	- AUD	- AUD	- AUD	- AUD	- AUD	(656.00) AUD
7	05/2017	10/2022	- AUD	- AUD	- AUD	- AUD	- AUD	- AUD	- AUD	- AUD	- AUD	- AUD	- AUD	- AUD
8	04/2021	11/2022	- AUD	- AUD	- AUD	- AUD	- AUD	- AUD	- AUD	- AUD	- AUD	- AUD	- AUD	- AUD
9	06/2021	11/2022	- AUD	- AUD	- AUD	- AUD	- AUD	- AUD	- AUD	- AUD	- AUD	- AUD	- AUD	- AUD
10	02/2020	12/2022	- AUD	- AUD	- AUD	- AUD	- AUD	- AUD	- AUD	- AUD	- AUD	- AUD	- AUD	- AUD
11	08/2021	12/2022	- AUD	- AUD	- AUD	- AUD	- AUD	- AUD	- AUD	- AUD	- AUD	- AUD	- AUD	- AUD
12	06/2021	01/2023	- AUD	- AUD	- AUD	- AUD	- AUD	- AUD	- AUD	- AUD	- AUD	- AUD	- AUD	- AUD
13	07/2021	01/2023	- AUD	- AUD	- AUD	- AUD	- AUD	- AUD	- AUD	- AUD	- AUD	- AUD	- AUD	- AUD
<b>Total</b>	<b>13</b>		- AUD	- AUD	- AUD	- AUD	- AUD	- AUD	- AUD	- AUD	- AUD	- AUD	(871.25) AUD	21,662.38 AUD

Contract Level Data      Net Salvage Recoveries By Contract By Month

No.	Month / Year of Origination	Month / Year of Net Salvage	Nov-22	Dec-22	Jan-23	Feb-23	Mar-23	Apr-23	May-23	Jun-23	Jul-23	Aug-23	Sep-23	Oct-23
1	02/2021	07/2022	- AUD	- AUD	- AUD	- AUD	- AUD	- AUD	- AUD	- AUD	- AUD	- AUD	- AUD	- AUD
2	04/2017	08/2022	100.00 AUD	- AUD	2,282.04 AUD	- AUD	- AUD	- AUD	- AUD	- AUD	- AUD	- AUD	- AUD	- AUD
3	09/2020	08/2022	- AUD	- AUD	3,945.81 AUD	- AUD	- AUD	- AUD	- AUD	- AUD	- AUD	- AUD	- AUD	- AUD
4	11/2020	08/2022	- AUD	- AUD	- AUD	- AUD	- AUD	- AUD	- AUD	- AUD	- AUD	- AUD	- AUD	- AUD
5	03/2021	08/2022	- AUD	- AUD	- AUD	- AUD	- AUD	- AUD	- AUD	- AUD	- AUD	- AUD	- AUD	- AUD
6	08/2021	09/2022	- AUD	- AUD	- AUD	- AUD	- AUD	- AUD	- AUD	- AUD	- AUD	- AUD	- AUD	- AUD
7	05/2017	10/2022	- AUD	- AUD	- AUD	- AUD	- AUD	- AUD	- AUD	- AUD	- AUD	- AUD	- AUD	- AUD
8	04/2021	11/2022	- AUD	- AUD	- AUD	- AUD	- AUD	- AUD	- AUD	- AUD	- AUD	- AUD	- AUD	- AUD
9	06/2021	11/2022	- AUD	- AUD	- AUD	- AUD	- AUD	- AUD	- AUD	- AUD	- AUD	- AUD	- AUD	- AUD
10	02/2020	12/2022	- AUD	- AUD	(135.89) AUD	- AUD	- AUD	- AUD	- AUD	- AUD	- AUD	- AUD	- AUD	- AUD
11	08/2021	12/2022	- AUD	- AUD	- AUD	- AUD	- AUD	- AUD	- AUD	- AUD	- AUD	- AUD	- AUD	- AUD
12	06/2021	01/2023	- AUD	- AUD	- AUD	- AUD	- AUD	- AUD	- AUD	- AUD	- AUD	- AUD	- AUD	- AUD
13	07/2021	01/2023	- AUD	- AUD	- AUD	- AUD	- AUD	- AUD	- AUD	- AUD	- AUD	- AUD	- AUD	- AUD
<b>Total</b>	<b>13</b>		<b>100.00 AUD</b>	<b>- AUD</b>	<b>6,091.96 AUD</b>	<b>- AUD</b>	<b>- AUD</b>	<b>- AUD</b>	<b>- AUD</b>	<b>- AUD</b>	<b>- AUD</b>	<b>- AUD</b>	<b>- AUD</b>	<b>- AUD</b>

Contract Level Data

Net Salvage Recoveries By Contract By Month

#REF!

No.	Month / Year of Origination	Month / Year of Net Salvage	Nov-23	Dec-23	Jan-24	Feb-24	Mar-24	Apr-24	May-24	Jun-24	Jul-24	Aug-24	Sep-24	Oct-24
1	02/2021	07/2022	- AUD	- AUD	- AUD	- AUD	- AUD	- AUD	- AUD	- AUD	- AUD	- AUD	- AUD	- AUD
2	04/2017	08/2022	- AUD	- AUD	- AUD	- AUD	- AUD	- AUD	- AUD	- AUD	- AUD	- AUD	- AUD	- AUD
3	09/2020	08/2022	- AUD	- AUD	- AUD	- AUD	- AUD	- AUD	- AUD	- AUD	- AUD	- AUD	- AUD	- AUD
4	11/2020	08/2022	- AUD	- AUD	- AUD	- AUD	- AUD	- AUD	- AUD	- AUD	- AUD	- AUD	- AUD	- AUD
5	03/2021	08/2022	- AUD	- AUD	- AUD	- AUD	- AUD	- AUD	- AUD	- AUD	- AUD	- AUD	- AUD	- AUD
6	08/2021	09/2022	- AUD	- AUD	- AUD	- AUD	- AUD	- AUD	- AUD	- AUD	- AUD	- AUD	- AUD	- AUD
7	05/2017	10/2022	- AUD	- AUD	- AUD	- AUD	- AUD	- AUD	- AUD	- AUD	- AUD	- AUD	- AUD	- AUD
8	04/2021	11/2022	- AUD	- AUD	- AUD	- AUD	- AUD	- AUD	- AUD	- AUD	- AUD	- AUD	- AUD	- AUD
9	06/2021	11/2022	- AUD	- AUD	- AUD	- AUD	- AUD	- AUD	- AUD	- AUD	- AUD	- AUD	- AUD	- AUD
10	02/2020	12/2022	- AUD	- AUD	- AUD	- AUD	- AUD	- AUD	- AUD	- AUD	- AUD	- AUD	- AUD	- AUD
11	08/2021	12/2022	- AUD	- AUD	- AUD	- AUD	- AUD	- AUD	- AUD	- AUD	- AUD	- AUD	- AUD	- AUD
12	06/2021	01/2023	- AUD	- AUD	- AUD	- AUD	- AUD	- AUD	- AUD	- AUD	- AUD	- AUD	- AUD	- AUD
13	07/2021	01/2023	- AUD	- AUD	- AUD	- AUD	- AUD	- AUD	- AUD	- AUD	- AUD	- AUD	- AUD	- AUD
Total	13		- AUD	- AUD	- AUD	- AUD	- AUD	- AUD	- AUD	- AUD	- AUD	- AUD	- AUD	- AUD

Contract Level Data

Net Salvage Recoveries By Contract By Month

No.	Month / Year of Origination	Month / Year of Net Salvage	Nov-24	Dec-24	Jan-25	Feb-25	Mar-25	Apr-25	May-25	Jun-25	Jul-25	Aug-25
1	02/2021	07/2022	- AUD	- AUD	- AUD	- AUD	- AUD	- AUD	- AUD	- AUD	- AUD	- AUD
2	04/2017	08/2022	- AUD	- AUD	- AUD	- AUD	- AUD	- AUD	- AUD	- AUD	- AUD	- AUD
3	09/2020	08/2022	- AUD	- AUD	- AUD	- AUD	- AUD	- AUD	- AUD	- AUD	- AUD	- AUD
4	11/2020	08/2022	- AUD	- AUD	- AUD	- AUD	- AUD	- AUD	- AUD	- AUD	- AUD	- AUD
5	03/2021	08/2022	- AUD	- AUD	- AUD	- AUD	- AUD	- AUD	- AUD	- AUD	- AUD	- AUD
6	08/2021	09/2022	- AUD	- AUD	- AUD	- AUD	- AUD	- AUD	- AUD	- AUD	- AUD	- AUD
7	05/2017	10/2022	- AUD	- AUD	- AUD	- AUD	- AUD	- AUD	- AUD	- AUD	- AUD	- AUD
8	04/2021	11/2022	- AUD	- AUD	- AUD	- AUD	- AUD	- AUD	- AUD	- AUD	- AUD	- AUD
9	06/2021	11/2022	- AUD	- AUD	- AUD	- AUD	- AUD	- AUD	- AUD	- AUD	- AUD	- AUD
10	02/2020	12/2022	- AUD	- AUD	- AUD	- AUD	- AUD	- AUD	- AUD	- AUD	- AUD	- AUD
11	08/2021	12/2022	- AUD	- AUD	- AUD	- AUD	- AUD	- AUD	- AUD	- AUD	- AUD	- AUD
12	06/2021	01/2023	- AUD	- AUD	- AUD	- AUD	- AUD	- AUD	- AUD	- AUD	- AUD	- AUD
13	07/2021	01/2023	- AUD	- AUD	- AUD	- AUD	- AUD	- AUD	- AUD	- AUD	- AUD	- AUD
Total	13		- AUD	- AUD	- AUD	- AUD	- AUD	- AUD	- AUD	- AUD	- AUD	- AUD