

ADVANCE DISCOVERS MINERALIZED ANOMALIES AT GARNET CREEK

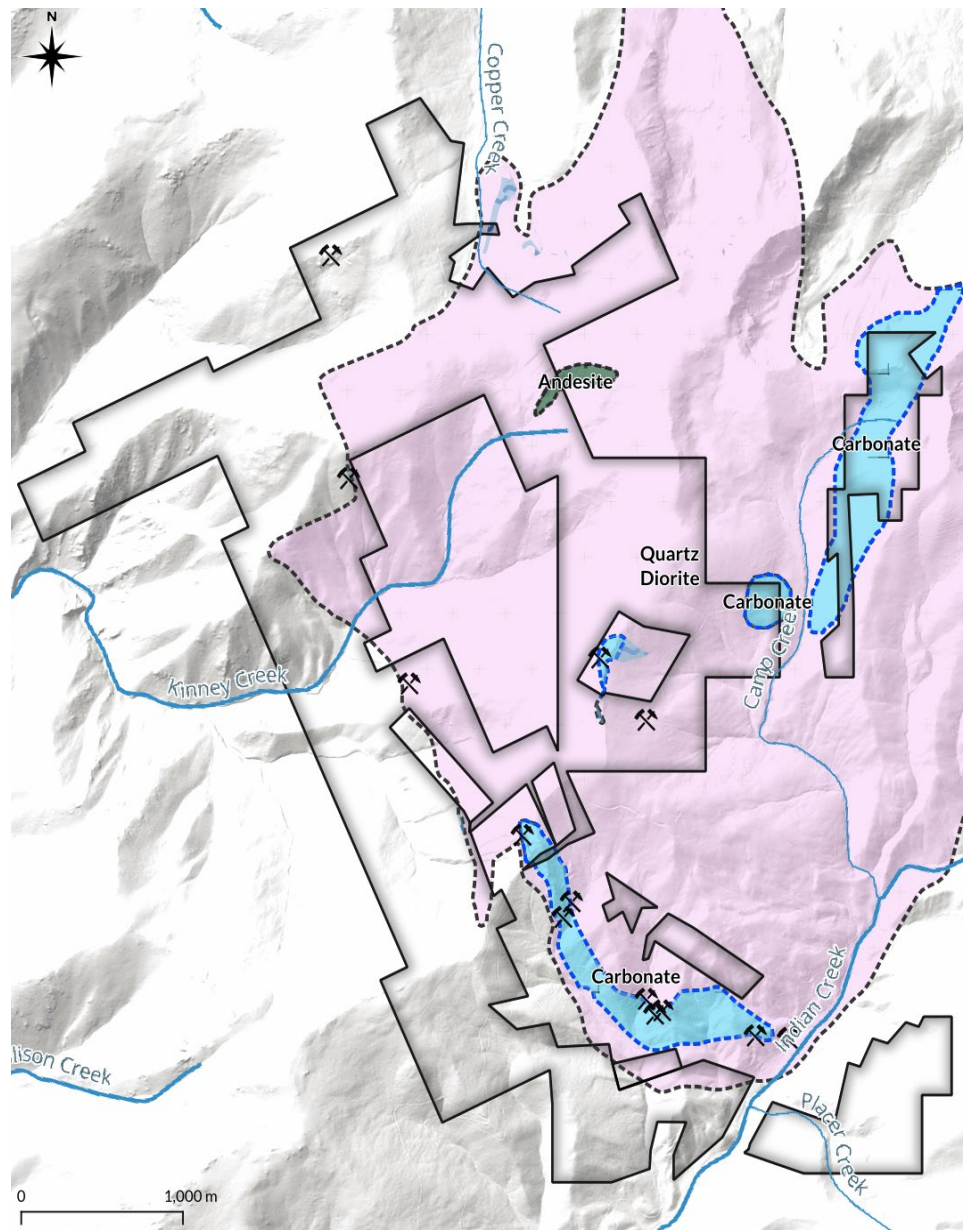
Completes Magnetic and Radiometric Survey

HIGHLIGHTS

- **Airborne magnetic and radiometric survey completed**
 - Mineralised anomalies confirmed at Garnet Creek
 - Surveys indicate new sites for further investigation
- **Mineralization covers an area approximately 8 km long by 3 km wide**
 - Exciting mineralisation is exposed at surface in these new newly-claimed areas
 - Targeted rock chip sampling program underway
- **The geophysical anomalies are consistent with a porphyry-style mineralising system**
 - Magnetic anomalies halo the intrusion
 - Radiometric anomalies coincide with known and new mineral targets
 - Potential for widespread copper mineralization at depth
- **Large soil sampling grid completed**
 - Sample results are forthcoming

Metals explorer, Advance Metals Limited (ASX: AVM) is pleased to announce the company has completed a helicopter-borne magnetic and radiometric survey of the Garnet Creek copper project flown by a well-known and reputable supplier Precision Geosurveys of Vancouver, B.C.

Advance Metals' claims area (announced in a Press Release dated August 30, 2022) are described by the IBMG as holding the potential for high grades of copper sitting in contact-related settings with the intrusion. The area additionally contains tungsten, silver and gold mineralization within the metamorphosed carbonate and related veins within the host andesite volcanic rocks; the greater region also holds several sites bearing disseminated copper at surface.



Geology and Garnet Creek property outline.

Preliminary results of the airborne survey over the Project suggest a circular region of moderate magnetic intensities located along the contact of a broad region of low magnetics coincident with a quartz-diorite intrusion. Surface mineralization on the Garnet Creek project occurs along the margin of this contact.

Advance Metals Limited

ABN 83 127 131 604

Suite 706, Level 7, 89 York Street, Sydney NSW 2000

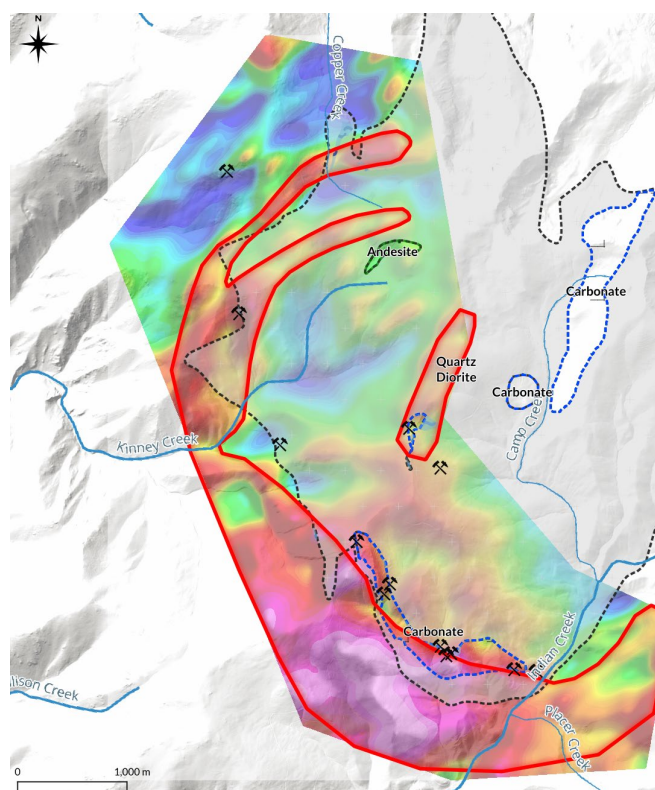
GPO Box 1546, Sydney NSW 2001

P: +61 (0) 2 9238 1175

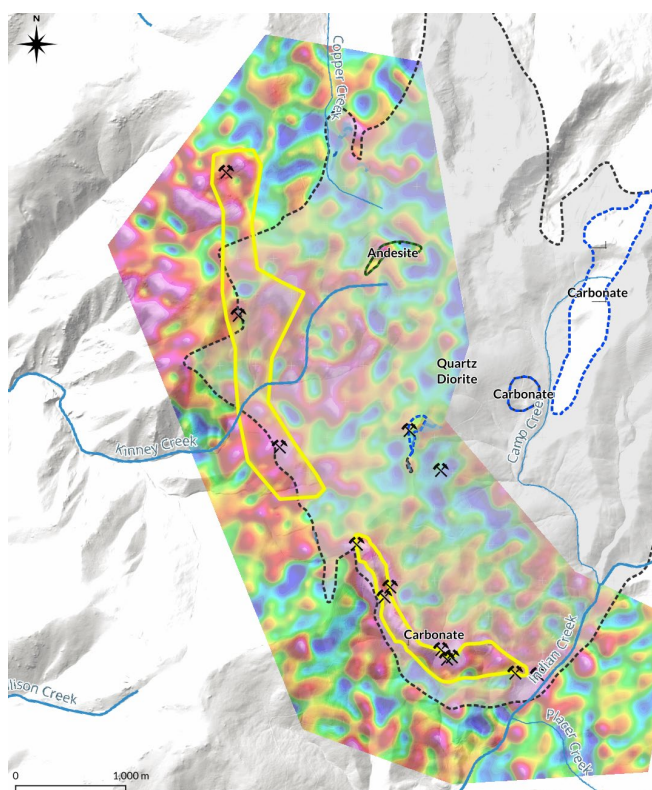
W: www.advancemetals.com.au

Additionally, the airborne radiometric survey displays tight zones of elevated uranium consistent with mineralized and metamorphosed limestones located along the contact of the quartz diorite intrusion. Combined, the broad magnetic anomaly, discrete radiometric anomalies, and contact mineralized zones reflect a prospective area approximately 8 km long by 3.0 km wide.

A magnetic anomaly coincident with the margin of a large intrusion, radiometric anomalies coincident with high-grade copper sitting along the contact with host rocks at surface, and occurrence of carbonate rocks underlying the volcanics in the greater region imply that the geology exposed is consistent within the upper reaches of a porphyry-style mineralising system holding the potential for widespread disseminated copper at depth within the reactive carbonate units and capped by the overlying andesite rocks.



Reduced-to-Pole airborne magnetic survey showing anomalies (red).



Uranium airborne radiometric survey showing anomalies (yellow).

Dom Hill COO Advance Metals, states “The capacity of the mineral system at Garnet Creek was never fully realized due to historically fractionated land ownership preventing the recognition of a district-scale system. The rocks, mineralisation style, and new exploration insights support potential for the district to host a porphyry-style copper mineralizing system and substantiate the opportunity for Advance Metals to encounter a significant mineral system underlying these historic and new surface discoveries at depth”.

The airborne geophysical survey is part of Advance Metals’ 2022 exploration program which also includes detailed mapping, rock sampling, and a large, gridded soil survey with assay results expected soon. With the evidence obtained during the 2022 summer program to date, the Company has enough data to support the drill permitting process at Garnet Creek and personnel are currently on site working to optimise drill pad locations and target channel sampling of mineralised rock on existing and newly-acquired claims.

This market announcement has been authorised for release to the market by the Board of Advance Metals Limited.

For more information, please contact

Investor Relations

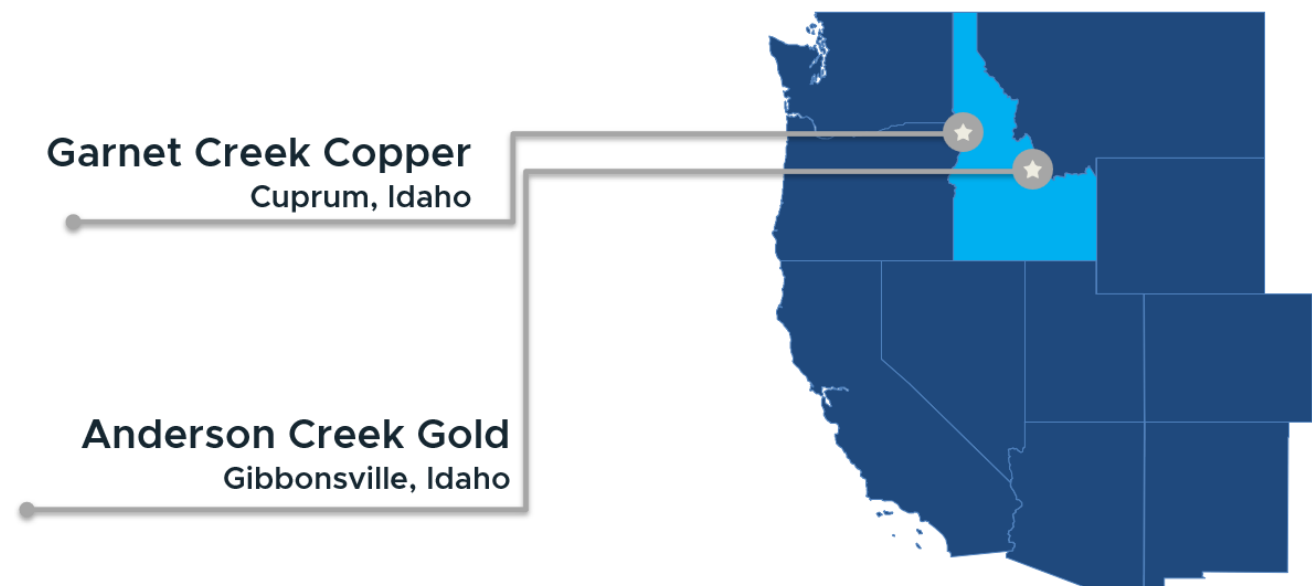
Advance Metals Limited

Email: info@advancemetals.com.au

About Advance Metals Limited

Advance Metals Limited (ASX:AVM) is an Australian exploration company with brownfield metals projects in North America. The Company's strategy is to develop a portfolio of projects that support the green economy through the discovery and delivery of commodities that promote electrification and decarbonisation. We seek to maximise shareholder value through the acquisition, discovery, and advancement of high quality precious, base, and strategic metal projects in North America. The Company utilises the expertise of our North American exploration team to identify underexplored and undervalued high-grade metal projects with significant geological potential.

The Company has 100% ownership of the Garnet Creek Copper Project and the Anderson Creek Gold Project. Both assets are located in the state of Idaho, USA. More details are available on AVM's website www.advancemetals.com.au

**Advance Metals Limited**

ABN 83 127 131 604
Suite 706, Level 7, 89 York Street, Sydney NSW 2000
GPO Box 1546, Sydney NSW 2001

P: +61 (0) 2 9238 1175
W: www.advancemetals.com.au

COMPETENT PERSON'S STATEMENT

The information in this document that relates to JORC 2012 Resources based on information compiled by Mr. Scott Close, M.Sc, Geology, who is a Member of a Recognised Overseas Professional Organisation (ROPO) included in a list promulgated by the ASX from time to time, being the Professional Society of British Columbia Engineers and Geoscientists (Cert. No. 158157).

Mr Close is the Principal Consultant/President of Ethos Geological, Inc. and has sufficient experience which is relevant to the style of mineralisation and type of deposit under consideration by them and to the activity which they are undertaking to qualify as a 'Competent Person' as defined in the 2012 Edition of the Australasian Code for Reporting of Exploration Results, Mineral Resources and Ore Reserves (JORC Code 2012). Mr Close consents to the inclusion in the report of the matters based on his information in the form and context in which it appears.

Previously Released Information

These ASX announcements refer to information extracted from reports available for viewing on AVM's website www.advancemetals.com.au and announced on:

- 06.09.2021 "Historic Gold Assays - Anderson Creek Gold Project"
- 16.01.2019 "Elko Coking Coal Project JORC Resource Increased to 303Mt"

AVM confirms it is not aware of any new information or data that materially affects the information included in the original market announcements, and, in the case of exploration targets, that all material assumptions and technical parameters underpinning the exploration targets in the relevant market announcements continue to apply and have not materially changed. AVM confirms that the form and context in which the Competent Person's findings presented have not been materially modified from the original market announcements.

Forward Looking Statements

Statements contained in this release, particularly those regarding possible or assumed future performance, revenue, costs, dividends, production levels or rates, prices or potential growth of the Company, are, or may be, forward looking statements. Such statements relate to future events and expectations and, as such, involve known and unknown risks and uncertainties. Actual results and developments may differ materially from those expressed or implied by these forward-looking.

The interpretations and conclusions reached in this announcement are based on current geological theory and the best evidence available to the authors at the time of writing.

It is the nature of all scientific conclusions that they are founded on an assessment of probabilities and, however high these probabilities might be, they make no claim for absolute certainty. Any economic decisions which might be taken on the basis of interpretations or conclusions contained in this report will therefore carry an element of risk or conclusions contained in this report will therefore carry an element of risk.

Section 1 Sampling Techniques and Data

Criteria	Commentary
<i>Sampling techniques</i>	<p>The aeromagnetic survey was flown by Precision GeoSurveys Inc</p> <p>SURVEY SPECIFICATIONS</p> <p>Survey Technology: Magnetic Gradient and Radiometric Survey</p> <p>Survey Dates: May17andMay18,2022</p> <p>Survey Base-: Ontario, Oregon</p> <p>Aircraft Type-: Airbus AS350 helicopter</p> <p>Registration: C-GSVY</p> <p>Total Line km: 205 Km</p> <p>Mean Survey Height: 55.8 metres</p> <p>Survey Line Spacing:: 100 metres</p> <p>Survey Line Direction 140°/320"</p> <p>Tie Line Spacing: 1000meters</p> <p>Tile Line Direction: 050°/230°</p> <p>AIRBORNE SURVEY SYSTEM</p> <p>Magnetometer Sensors: 3 x Geometrics G--822A Cesium</p>

Advance Metals Limited

ABN 83 127 131 604

Suite 706, Level 7, 89 York Street, Sydney NSW 2000

GPO Box 1546, Sydney NSW 2001

P: +61 (0) 2 9238 1175

W: www.advancemetals.com.au

	<p>Configuration: Triple gradient boom with 3 axis compensation</p> <p>Sample Rate: 20Hz</p> <p>Sensitivity: 0.0005 nT Hz rms</p> <p>Gamma Ray Spectrometer: Pico EnirotecAGRS-5</p> <p>Downward-Looking Crystals: 16.8 litres of NaI(Tl)</p> <p>Upward-Looking Crystal: 4.2 litres of NaI(Tl)</p> <p>Sample Rate: 1Hz (Resampled b 20 Hz)</p> <p>Other details of sampling techniques is not applicable</p>
<i>Drilling techniques</i>	No drilling activity undertaken
<i>Drill sample recovery</i>	No drill samples collected
<i>Logging</i>	This release has no reference to previously unreported drill results.
<i>Sub-sampling techniques and sample preparation</i>	This release has no reference to previously unreported drill results.

Advance Metals Limited

ABN 83 127 131 604

Suite 706, Level 7, 89 York Street, Sydney NSW 2000

GPO Box 1546, Sydney NSW 2001

P: +61 (0) 2 9238 1175

W: www.advancemetals.com.au

<i>Quality of assay data and laboratory tests</i>	Airborne Magnetic and Radiometric Survey does not involve any assays or laboratory tests
<i>Verification of sampling and assaying</i>	This release has no reference to previously unreported drill results, sampling, assays or mineralisation.
<i>Location of data points</i>	All data has been collected in WGS84 UTM zone 11N coordinates This release has no reference to previously unreported drill results..
<i>Data spacing and distribution</i>	The survey line spacing was 100m with data recorded at 20Hz. The data density is considered appropriate to the purpose of the survey.
	The work completed was appropriate for the exploration stage
<i>Orientation of data in relation to geological structure</i>	The line path is approximately perpendicular to the regional strike direction of geological formations and is sufficient to locate discrete anomalies.
<i>Sample security</i>	Not applicable for geophysical survey
<i>Audits or reviews</i>	No audits have been performed for this initial field/data review

Section 2 Reporting of Exploration Results

Criteria	Commentary
<i>Mineral tenement and land tenure status</i>	AVM controls 147 Federal Lode Claims covering an area of 2859.1 acres. Annual claim maintenance fees are payable to the BLM by September 1st of each year. AVM paid initial staking fees in June 2021, then paid the annual fees for all claims on August 31st, 2022.

Advance Metals Limited

ABN 83 127 131 604

Suite 706, Level 7, 89 York Street, Sydney NSW 2000

GPO Box 1546, Sydney NSW 2001

P: +61 (0) 2 9238 1175

W: www.advancemetals.com.au

<i>Exploration performed by other parties</i>	The USBM compiled extensive geological studies of the Hells Canyon area in 1982 and refreshed in 1993. These reports contain summaries of the historic mining and production that occurred prior to WWII. The USGS updated mineral resource estimates for the Hells Canyon Area in 2007.
<i>Geology</i>	Limestone replacement deposits known as skarn or tactite deposits. Evidence of mineral enriched shear zones are also referenced.
<i>Drill hole Information</i>	No recent drilling has been in the project area. AVM cannot verify the accuracy of the locations of the previous drilling.
<i>Data aggregation methods</i>	n/a
<i>Relationship between mineralisation widths and intercept lengths</i>	n/a
<i>Diagrams</i>	n/a
<i>Balanced reporting</i>	n/a
<i>Other substantive exploration data</i>	The company has compiled assay results, geochemical sampling data from USBM, USGS, and IGS documents as the basis for additional exploration, geochemical sampling, and mapping. The Company has not verified the location or accuracy of any of these data.
<i>Further work</i>	AVM is currently developing Exploration Target reports for the Garnet Creek Project area. The company is planning extensive surface geochemical sampling, detailed geological mapping, and aerial magnetic surveys across the project area. Based on the result of this field work, the Company will develop drilling exploration plans and file exploration permits with the USFS

Due to the initial and preliminary nature of the Anderson Creek Project Section 3 And Section 4 do not have data.

Advance Metals Limited

ABN 83 127 131 604

Suite 706, Level 7, 89 York Street, Sydney NSW 2000

GPO Box 1546, Sydney NSW 2001

P: +61 (0) 2 9238 1175

 W: www.advancemetals.com.au