



# ANNUAL REPORT 2023

# Corporate Directory

## DIRECTORS

**Carlos Alberto Fernicola**  
(Non-Executive Chairman)

**Peter Henry Hwang**  
(Managing Director)

**Simon James Pooley**  
(Non-Executive Director)

## COMPANY SECRETARY

**Carlos Alberto Fernicola**

## STOCK EXCHANGE

**ASX LIMITED**  
ASX Code: SPQ

## COMPANY

**Superior Resources Limited**  
ABN 72 112 844 407

## REGISTERED OFFICE

Unit 8, 61 Holdsworth Street  
COORPAROO QLD 4151

## PRINCIPAL OFFICE

Suite 3, Level 1, 5 Gardner Close  
MILTON QLD 4064

T: 07 3847 2887  
E: manager@superiorresources.com.au

## INTERNET ADDRESS

www.superiorresources.com.au

## POSTAL ADDRESS

PO Box 189  
COORPAROO QLD 4151

## SHARE REGISTRY

**Link Market Services Limited**  
Level 21, 10 Eagle Street  
BRISBANE QLD 4000

## POSTAL ADDRESS

Locked Bag A14  
SYDNEY SOUTH NSW 1235

T: 1300 554 474  
F: 02 9287 0303  
E: registrars@linkmarketservices.com.au

## AUDITOR

**William Buck**  
Level 21, 307 Queen Street  
BRISBANE QLD 4000

T: 07 3229 5100  
F: 07 3221 6027

## CONTENTS

Chairman and Managing Director's Review

2

Highlights

4

Review of Operations

5

Directors' Report

18

Auditor's Independence Declaration

28

Corporate Governance

29

Consolidated Statement of Profit or Loss

30

Consolidated Statement of other Comprehensive Income

31

Consolidated Statement of Financial Position

32

Consolidated Statement of Changes In Equity

33

Consolidated Statement of Cash Flows

34

Notes to the Consolidated Financial Statements

35

Directors' Declaration

58

Independent Auditor's Report

59

Shareholder Information

63

Tenement Schedule

66

Mineral Resources Statement

67

# SUPERIOR RESOURCES

## Big projects. Big potential.

**Superior Resources Limited (ASX:SPQ) is an Australian public company exploring for large copper-gold, nickel-copper-PGE, gold and lead-zinc-silver deposits in northern Queensland which have the potential to return maximum value growth for shareholders.**

Based in Brisbane, Queensland, Superior is focused on multiple Tier-1 potential exploration targets and has a dominant position within the Carpentaria Zinc Province in north-west Qld and Ordovician rock belts hosting copper-gold porphyries in north-east Qld, considered equivalents of the NSW Macquarie Arc.

Amid rising demand from the green transition for metals such as copper, nickel, PGEs, cobalt and zinc, Superior has the right projects in the right location at the right time.

Our experienced Board has expertise in all aspects of minerals exploration, financial management and corporate governance, backed by an expert geological team to advance our exploration portfolio.

To find out more, visit our website at [www.superiorresources.com.au](http://www.superiorresources.com.au)

# CHAIRMAN AND MANAGING DIRECTOR'S REVIEW

Dear Fellow Shareholders

Superior Resources has achieved significant value growth in its future-facing portfolio of projects through continued high impact exploration outcomes.

Despite challenging global economic and market conditions, we have continued to attract the necessary investor support to maintain an active exploration program across our projects in northern Queensland.

This exploration program has built the foundations for further growth in market value, as we continue to target potential 'elephants' in an extremely prospective region, including porphyry copper, and magmatic sulphide nickel-copper-PGE.

Notably, Superior's 100 per cent owned Greenvale Project has been validated as a province containing several porphyry systems with Tier-1 deposit potential. The province extends for at least 65 kilometres and includes at least five known or suspected porphyry prospects.

It is believed to represent the northern remnants of the New South Wales Ordovician-age Macquarie Arc, which hosts the world-class Cadia and Ridgeway porphyry deposits.

## **Bottletree results impress**

The Bottletree Copper-Gold Prospect within Superior's Greenvale Project continues to impress, with drill results showing the potential for a significant porphyry copper, gold and molybdenum discovery.

Importantly, Bottletree has been recognised as a copper-gold-molybdenum porphyry system by internationally recognised porphyry-epithermal experts, which provides a solid foundation for the project.

Commencing in mid-June, the 2022 drilling program started with the collaring of the program's first diamond core hole, BTDD005. The primary objective was to build a geological model to better understand the mineralisation and identify porphyry-related alteration zones.

In August 2022, Superior announced that visual copper mineralisation had been intersected over almost the entire, 933 metre BTDD005, reinforcing the prospect's large size potential and confirming a buried porphyry system. A new porphyry target was also identified, with at least two potential core porphyries.

Bottletree's 2022 drilling program was completed in December, comprising six diamond core holes for 4,952m of core. Several dacite porphyry intrusions and

varying degrees of disseminated and vein quartz-chalcopyrite mineralisation were intersected at each hole.

In April 2023, Superior reported the discovery of a large porphyry-style alteration and copper-gold-molybdenum mineralisation system, extending from the surface to at least 850m down-dip depth. This included high-grade molybdenum mineralisation, including a spectacular 5.2% Mo assay.

With molybdenum currently trading at around US\$50,000 per tonne, Bottletree's molybdenum potential could be substantial in terms of its overall economic potential.

The discovery of a copper-molybdenum porphyry system in this part of Queensland is significant, as metallogenically-fertile Ordovician-age porphyries similar to those in NSW were not previously known to exist in Queensland.

A phase two drilling program at Bottletree was announced in June 2023, targeting an interpreted intrusion centre considered a likely source of copper and molybdenum mineralisation, as well as testing for wallrock porphyry deposit potential.



## Cockie Creek advances

In June 2023, Superior announced plans to commence a maiden diamond drilling program at the Cockie Creek Porphyry Prospect. The program targeted two significant anomalies directly below the shallow copper-gold deposit, as well as resource definition drilling.

The current Mineral Resource estimate comprises 13 million tonnes @ 0.42 per cent copper (0.25 per cent cut-off grade), based on a strike length of 1.2 km and a maximum depth of 250m.

Cockie Creek has been subject to very limited historical exploration and prior explorers did not consider it a porphyry copper-gold system. Consequently, Superior's drilling program is the first to target a large porphyry system potentially responsible for the known mineralisation. The prospect has significant potential for the discovery of a large porphyry, copper-gold-molybdenum mineralisation system.

Post-balance date, in August the Company announced the completion of the first four Resource definition holes, with each hole generally confirming a greater extent of copper mineralisation than reported in historical drill hole assays.

In September, further drill holes confirmed that the strong visually observed copper sulphide mineralisation continued to be intersected for significant distances outside the historically reported mineralisation envelope. The holes also extended the mineralised zone down dip.

The first assays announced later the same month returned strong porphyry copper mineralisation indicative of a well-mineralised porphyry copper-gold-molybdenum system. Assays from the second hole were also encouraging, confirming higher grades and broader width of porphyry copper and gold mineralisation at deeper levels.

The quality of the mineralisation at Cockie Creek in terms of grade, consistency and continuity has been impressive, boosting confidence in the size and grade potential of the causative porphyry system.

Elsewhere, Superior is planning maiden exploration programs on the Greenvale magmatic nickel-copper-PGE sulphide province.

New tenement applications for three new exploration permits for minerals were made during the September quarter 2023, with Superior targeting terrain considered prospective for Voisey's Bay-style magmatic nickel-copper-PGE sulphide systems.

## Investors support capital raise

Recent drilling programs would have been impossible without investor support and Superior thanks all shareholders for their continued backing, particularly amid recent geopolitical and economic conditions.

In May, a placement to institutional and sophisticated investors secured around \$4 million, including new institutional investors. The funding has enabled the Company to accelerate exploration across multiple prospects within the Greenvale porphyry province, including at Bottletree and Cockie Creek, while also progressing a Mining Options Study and Resource expansion program at the Steam Engine Gold Project.

Superior looks forward to advancing exploration across its project portfolio, to deliver returns to investors and increased value for all stakeholders.

I would also like to thank my fellow Directors, our employees, consultants, contractors and suppliers and all those associated with Superior for your support over the past year, without which recent achievements would not have been possible.

Superior's project pipeline is well placed amid the world's net zero push, with minerals such as copper vital to the global decarbonisation drive.

Both the Queensland and federal governments consider metals such as copper and nickel key to the energy transition. For example, a typical electric car requires six times the mineral inputs of a conventional vehicle and an offshore wind plant requires 13 times more mineral resources than a similarly sized gas-fired plant.

The International Energy Agency expects demand for such critical minerals to more than double by 2030 and grow another 3.5 times by 2050, making the discovery of such minerals vital to facilitate global net zero targets.

Having identified two new high-impact mineral provinces and with the potential for near-term revenue from Superior's Steam Engine Gold Project, the Company is extremely well placed to deliver significant value growth.

With such a bright outlook, Superior is set for further gains in fiscal 2024 and I thank you for your continued support.

Yours sincerely



**Carlos Fernicola**  
Chairman



**Peter Hwang**  
Managing Director

# HIGHLIGHTS



Discovery of large porphyry-style system at Bottletree Copper-Gold Prospect



Bottletree recognised by international experts as copper-gold-molybdenum porphyry system



Spectacular molybdenum **grades of up to 5.2% Mo** boost Bottletree's potential



**Maiden diamond drilling program** launched at Cockie Creek Porphyry Copper-Gold Prospect

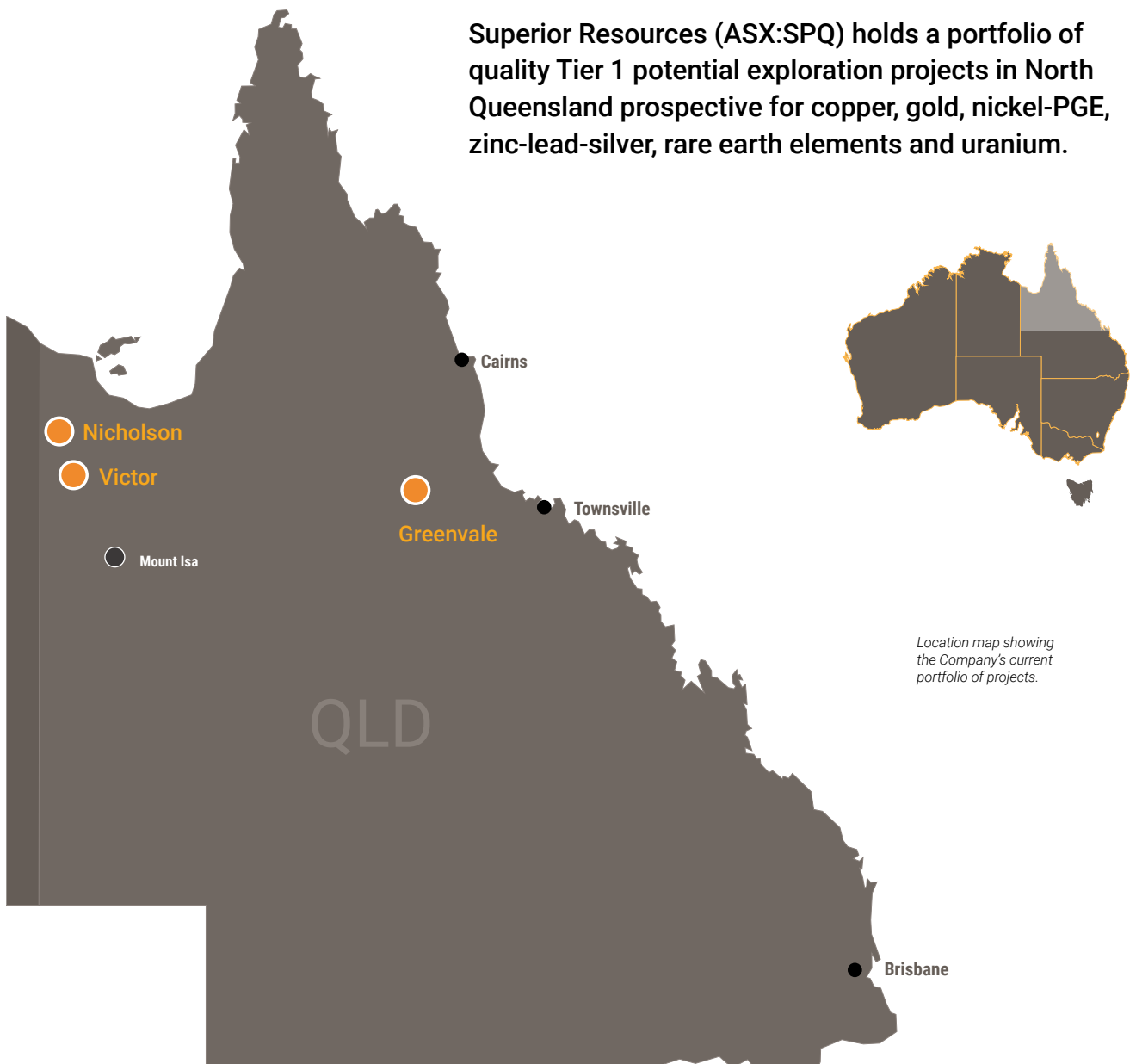


**Successful capital raise secures \$4 million** to advance multi-prospect drilling program



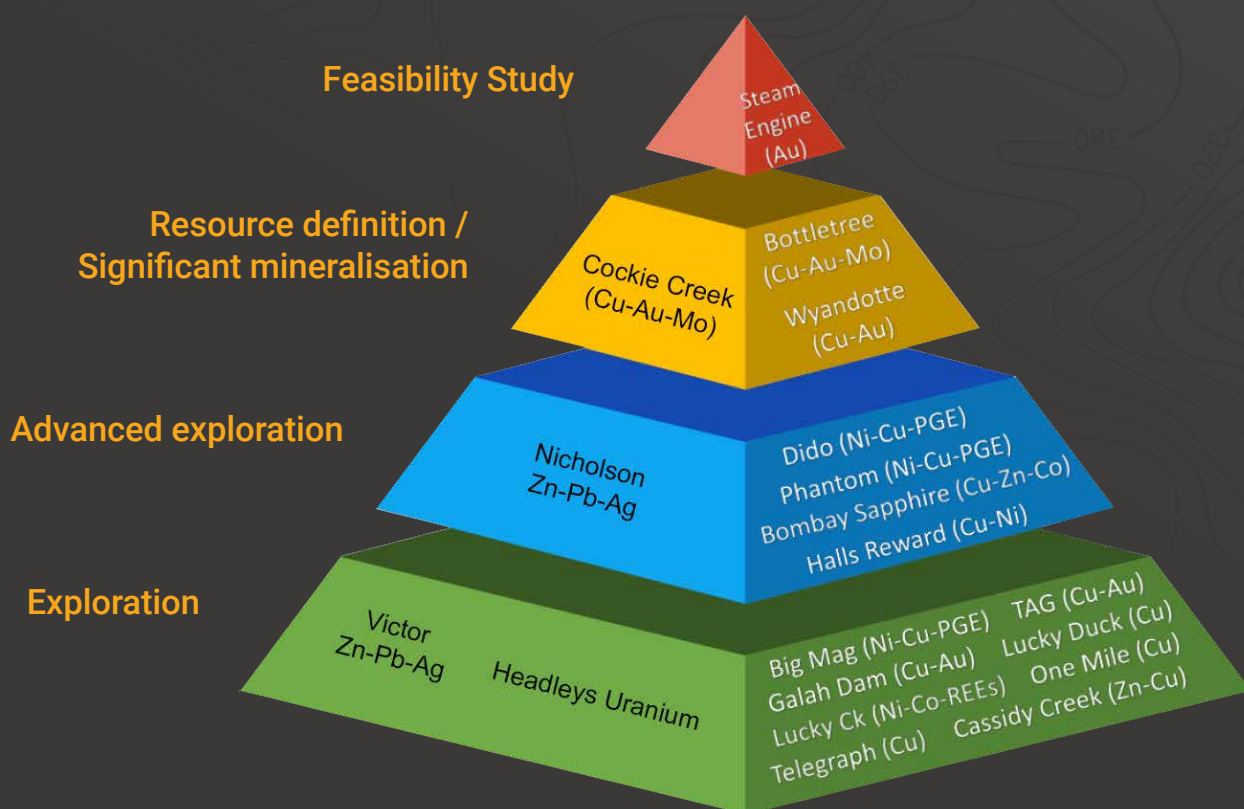
# Review of Operations

Superior Resources (ASX:SPQ) holds a portfolio of quality Tier 1 potential exploration projects in North Queensland prospective for copper, gold, nickel-PGE, zinc-lead-silver, rare earth elements and uranium.



# LEVERAGING THE GREEN TRANSITION

Superior's projects are leveraging the green transition, with our portfolio of key forward-facing metals including copper, nickel, PGEs, cobalt and zinc, together with uranium and rare earth elements.





## Greenvale Project

The Greenvale Project (SPQ 100%) is highly prospective for multiple porphyry copper-gold, orogenic gold, VMS copper, Voisey's Bay style magmatic nickel-copper-PGE sulphide and zinc deposits and contains at least 60 high potential prospects.

The project covers a substantial area of 1,750 sq km and is located within a region of notable economic significance, being proximal to the Kidston, Balcooma, Surveyor and Dry River South deposits.

The Kidston Clean Energy Hub, being constructed at the former Kidston mine site, will supply 100% renewable energy into the NEM via a transmission line passing through the centre of the Greenvale Project area.

Mineral prospects within the Greenvale Project include the following:

<b>Bottletree</b>	Porphyry copper-molybdenum-gold
<b>Cockie Creek</b>	Porphyry copper-gold
<b>Wyandotte Copper</b>	High-grade copper, potential porphyry
<b>Galah Dam</b>	Potential porphyry / massive sulphide copper-gold-zinc
<b>Big Mag</b>	Potential magmatic nickel-copper-PGE sulphide
<b>Palmer Rails</b>	Voisey's Bay style magmatic nickel-copper-PGE sulphide
<b>Phantom Creek</b>	Voisey's Bay style magmatic nickel-copper-PGE sulphide
<b>Bombay Sapphire</b>	Potential VMS or porphyry copper
<b>Steam Engine</b>	High-grade orogenic lode gold
<b>Halls Reward</b>	Cyprus style VMS (high-grade copper)
<b>One Mile/One Mile Dam</b>	Potential VMS / porphyry copper-gold
<b>Riesling</b>	Potential Broken Hill Style zinc-lead-copper
<b>Lucky Creek</b>	Lateritic Nickel-Cobalt-Rare Earth Elements

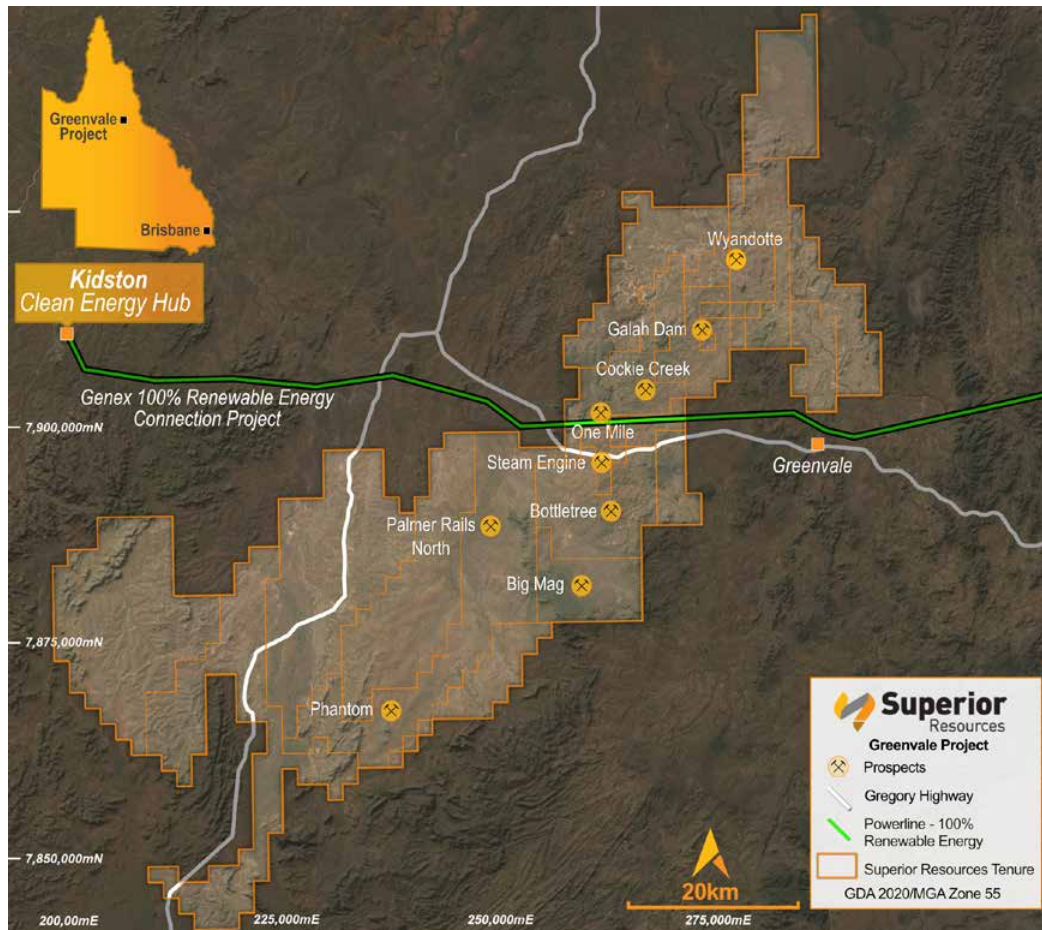


Figure 1: Greenvale Project tenements and prospects shown over satellite imagery.



Figure 2: Exploration drilling at Superior's Greenvale Project in Queensland

### Bottletree Copper-Gold Prospect

The Bottletree Copper-Gold Prospect has continued to impress, with drilling results showing the potential for a significant porphyry copper, gold and molybdenum discovery.

The project is located around 210 km west of Townsville, Qld and only 5 km south of Superior's Steam Engine Gold Project.

Importantly, Bottletree has been recognised as a copper-gold-molybdenum porphyry system by internationally recognised porphyry experts, providing a solid foundation for the project.

Bottletree's 2022 drilling program commenced on 15 June 2022 with the collaring of the program's first diamond core hole, BTDD005. The primary objective was to build a geological model to better understand the mineralisation and identify porphyry-related alteration zones and zonation of alteration to enable vectoring towards the central mineralised potassic core(s) of a porphyry system.

In August 2022, Superior announced that visual copper mineralisation had been intersected over almost the entire, 933 metre BTDD005, collared 300m west of BTDD004. The 250m interval

of strong copper mineralisation in BTDD005 indicated at least 700m of down-dip continuation from surface of the strongly mineralised distal copper zone identified in BTDD004. This was the best confirmation of a buried porphyry system at Bottletree.

A new porphyry target was also identified, along with at least two other potential core porphyries.

Bottletree's 2022 drilling program was completed on 9 December 2022, comprising six diamond core holes (BTDD005 – BTDD010) for 4,952m of core. Several dacite porphyry intrusions and varying degrees of disseminated and vein quartz-chalcopyrite mineralisation was intersected at each hole.

In April 2023, Superior reported a significant breakthrough with the discovery of a large porphyry-style alteration and copper-gold-molybdenum mineralisation system, extending from the surface to at least 850m down-dip depth. This included high-grade molybdenum mineralisation, including a spectacular 5.2% assay.

With molybdenum currently trading at around US\$50,000 per tonne, Bottletree's molybdenum potential could be transformational in terms of its overall economic potential.

The drilling program validated Greenvale as a newly recognised porphyry province containing several porphyry systems with Tier-1 deposit potential. The province extends for at least 65 km, includes at least five known or suspected additional porphyry prospects and is 100 per cent owned by Superior.

The discovery of a copper-molybdenum porphyry system in this part of Queensland is significant, as metallogenically-fertile Orodovician-age porphyries similar to those in NSW were not previously known to exist in Queensland.

A phase two drilling program of a minimum 2,000m of diamond core drilling at Bottletree was announced in June 2023, targeting an interpreted intrusion centre considered a likely source of copper and molybdenum mineralisation, as well as testing for wallrock porphyry deposit potential.

### Cockie Creek Porphyry Copper-Gold Prospect

Superior's most advanced porphyry prospect, Cockie Creek has potential for significant porphyry copper-gold mineralisation, with its mineralised system extending over 1.2 km and with a true width of up to 60m. The mineralisation shows good continuity and has only been drilled to shallow depths.



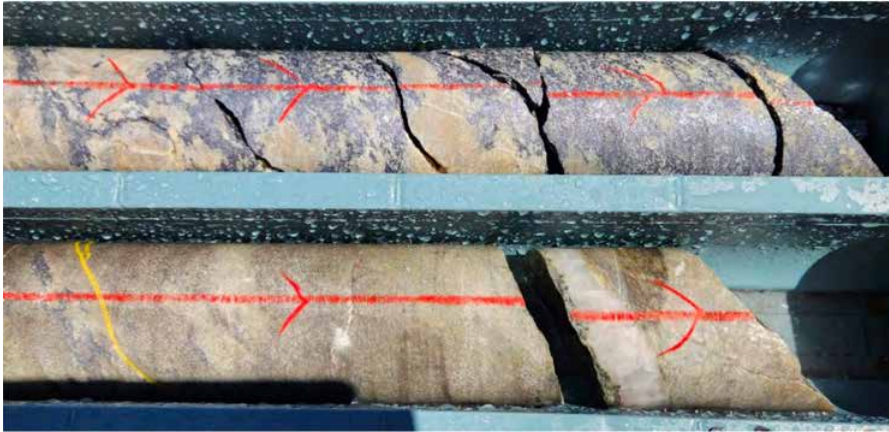


Figure 3: Intense molybdenum mineralisation within tonalite porphyry (1m @ 5.2% Mo within 6m @ 1.39% Mo, BTDD010, 474m-476m).

The current Mineral Resource estimate comprises **13Mt @ 0.42% Cu** (0.25% Cu cut-off grade) (JORC 2004), based on a strike length of 1.2 km and down to around 300m depth (compiling Mineral Resource Estimation to comply with JORC 2012). Two large, intense IP chargeability targets are located at depth below the defined mineralisation.

In June 2023, Superior announced plans to commence a maiden diamond drilling program at the Cockie Creek Porphyry Prospect to produce 4,500m of drill core. The program targeted two significant anomalies directly below the shallow copper-gold deposit, as well as resource definition drilling to establish a JORC 2012 compliant Mineral Resource Estimate and expand the size of the resource.

Cockie Creek has been subject to very limited historical exploration and prior explorers did not consider it a porphyry copper-gold system. Consequently, Superior's drilling program is the first to target a large porphyry system potentially responsible for the known mineralisation. The prospect has significant potential for the discovery of a large porphyry, copper-gold-molybdenum mineralisation system.

As at Bottletree, the likely wall rock-hosted mineralisation at Cockie Creek represents a potentially significant copper resource. Copper grades at Cockie Creek are relatively high in porphyry deposit terms, while a significant zone of gold (3m @ 9.0 g/t Au, from 80m in hole CRC003) was returned immediately before the western chargeable zone.

Post-balance date, in August 2023 the Company announced the completion of the first four Resource definition holes, with each hole generally confirming a greater extent of copper mineralisation than reported in historical drill hole assays.

In September 2023, further drill holes confirmed that the strong visually observed copper sulphide mineralisation continued to be intersected for significant distances outside the historically reported mineralisation envelope. The holes also extended the mineralised zone down dip.

The first assays announced later the same month returned strong porphyry copper mineralisation indicative of a well-mineralised porphyry copper-gold-molybdenum system. Results included **71m @ 0.48% Cu** and **70ppm Mo** from 16m (CCDD001), including **31m @ 0.65% Cu** and **80ppm Mo** from 36m.

Assays from the second hole announced in October 2023 were also encouraging, confirming higher grades and broader width of porphyry copper and gold mineralisation at deeper levels. Results included **117m @ 0.52% Cu, 0.11 g/t Au and 109ppm Mo** from 20m (CCDD002).

As at 16 October 2023, Superior had completed seven holes for a total of 2,773m of core, the first systematic drilling at Cockie Creek for over 30 years and the first to target the prospect as a porphyry system.

The quality of the mineralisation at Cockie Creek in terms of grade, consistency and continuity has been impressive, boosting confidence in the size and grade potential of the causative porphyry system.

The drilling results have also validated the Greenvale Lucky Creek Corridor as a preserved island arc system hosting a belt of regularly spaced porphyry copper-gold mineralisation systems.

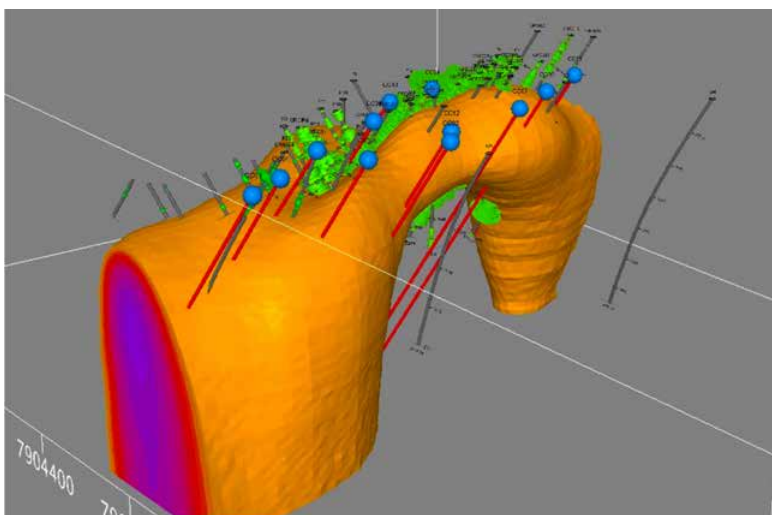


Figure 4: 3D IP chargeability model showing moderate to high chargeability zone. Historical drill holes (grey traces) and copper mineralisation (green) with 2023 planned drill holes in red. Viewed looking northeast.

## Wyandotte Copper Prospect

The Wyandotte Prospect is a shallow zone of high-grade copper mineralisation, which is potentially associated with a deeper intrusion-related or porphyry system.

In June 2023, Superior announced plans for the first drilling at Wyandotte since 1975, with the drilling campaign scheduled for late 2023 – early 2024. The Company is progressing initial geological and survey work in preparation, with initial field work having significantly upgraded its porphyry potential and scale.

Superior previously announced an Exploration Target (see Cautionary Note below) that meets the requirements of clauses 17 and 38 of the JORC Code 2012, ASX Listing Rules 5.7, 5.12 and 5.16 and ASX Listing Rules Guidance Note 31. The Exploration Target was expressed as a tonnage and grade range:

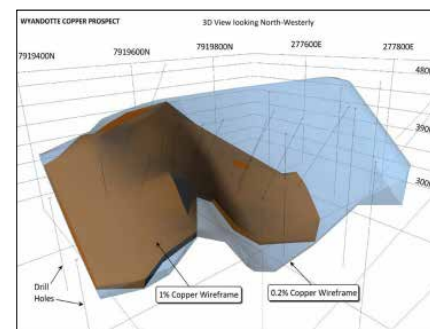


Figure 5: 3-D view of Wyandotte mineralisation wireframes of +1% copper and +0.2% copper mineralisation.

**Table 1. Exploration Target – Wyandotte Copper Prospect**

Tonnes	SG	Cu %	Cu tonnes	Range
400,000	2.7	2.2%	8,800	Lower
1,000,000	3.0	1.9%	19,000	Upper

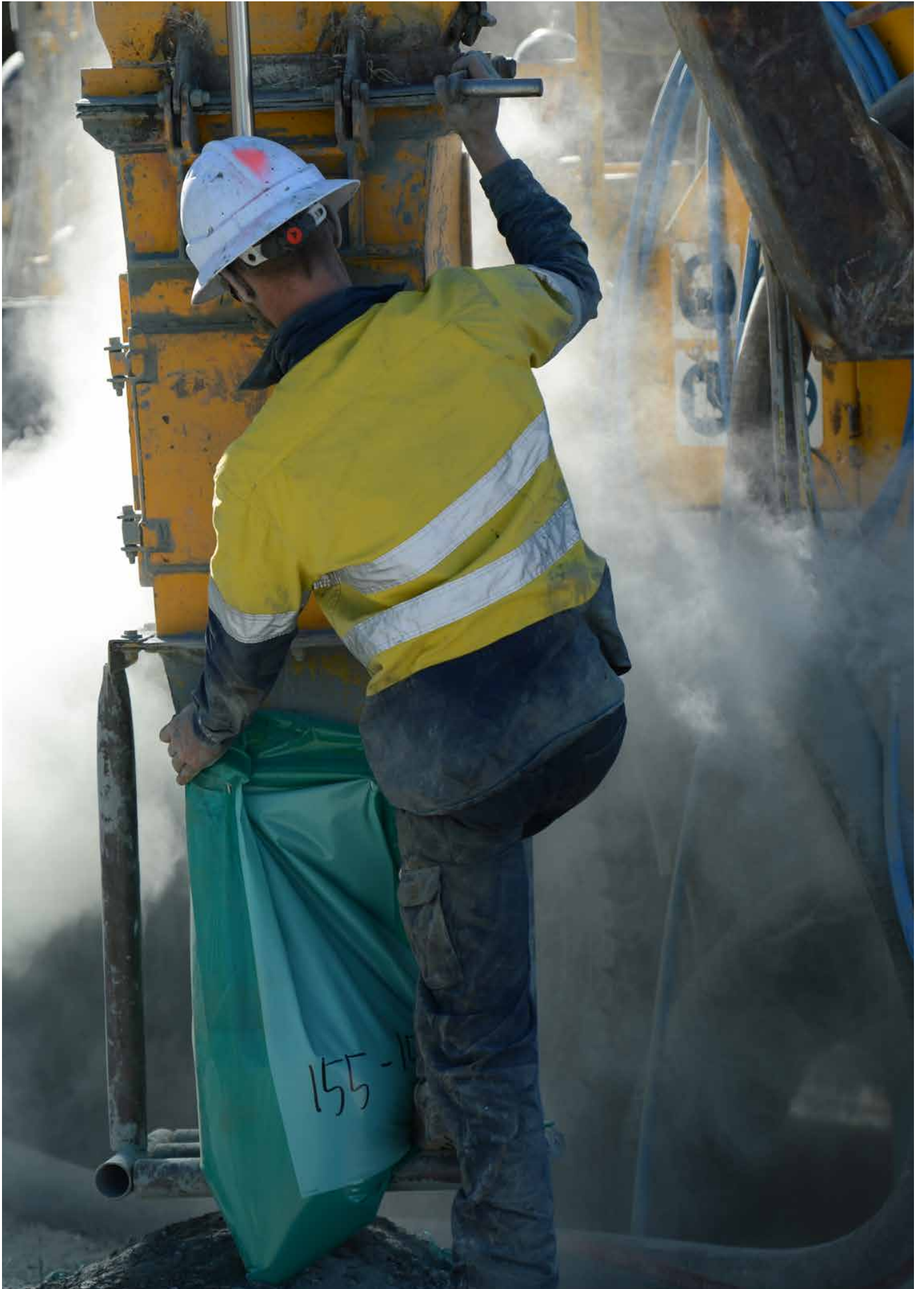
### Cautionary Statement (JORC, 2012)

*Exploration Target: The Wyandotte Exploration Target has been calculated using historic drill hole and assay information by a Competent Person (Competent Person declaration is provided in the latter parts of this report). The Exploration Target is reported in a form comprising a tonnage and copper mineralisation grade range. The Exploration Target does not constitute a Mineral Resource or Ore Reserve. The potential quantity and grade expressed by the Exploration Target is conceptual in nature as there has been insufficient exploration information to estimate a Mineral Resource. Furthermore, it is uncertain whether further exploration work will result in the estimation of a Mineral Resource.*

Figure 6: Exploration at Superior's Greenvale Project







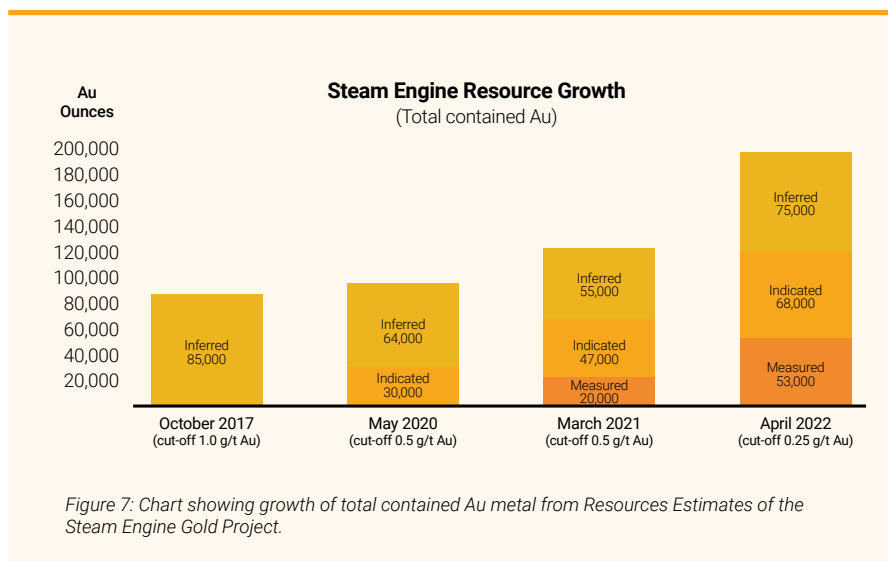


## Steam Engine Gold Deposit

The Steam Engine Gold Deposit contains at least two sub-parallel gold-bearing lodes, referred to as the Steam Engine Lode and the Eastern Ridge Lode.

A third zone of sub-parallel mineralisation exists to the east of Eastern Ridge Lode (Dinner Creek Lode) and an area of gold mineralisation comprising multiple lodes (Southern Zone) is located between, and to the south of the Steam Engine and Eastern Ridge lodes.

A 2021 resource drilling program resulted in a material upgrade to the Steam Engine Mineral Resource (JORC 2012), as shown below.



Key results included:

Lower Grade Owner Operated Processing Plant Model (lower cut-off grade of 0.25 g/t Au)

- 60.7% increase in total Measured, Indicated and Inferred Resource to **4.18 Mt @ 1.5 g/t Au for 196,000 oz Au**
- 80.6% increase in total Measured and Indicated Resource to: **2.22 Mt @ 1.7 g/t Au for 121,000 oz Au**

High Grade Toll Treatment Model (higher cut-off grade of 1.0 g/t Au)

- 40.2% increase in the total Measured, Indicated and Inferred Resource to: **2.72 Mt @ 2.0 g/t Au for 171,000 oz Au**
- 65.7% increase in total Measured and Indicated Resources to: **1.61 Mt @ 2.2 g/t Au for 111,000 oz Au**

The Resource envelope was developed to shallow depths along 1.3 km of lode strike, with at least 14 km of additional lode potential identified.

Superior is conducting an Options Study for the mining and processing of Steam Engine ore.

Other planned future activities include advancing toll treatment discussions with third parties; undertaking a Feasibility Study on Steam Engine and the Eastern Ridge lodes; metallurgical and environmental studies; a Mining Lease Application; and conducting Resource extension geophysical surveys.

**Table 2. Steam Engine Gold Project updated JORC, 2012 Mineral Resources Estimates**

Model	Classification	Tonnes	Grade (g/t Au)	Ounces (Au)
OWNER OPERATOR MODEL (0.25 g/t Au block grade cut-off)	Measured	800,000	2.1	53,000
	Indicated	1,420,000	1.5	68,000
	Inferred	1,960,000	1.2	75,000
<b>TOTAL</b>		<b>4,180,000</b>	<b>1.5</b>	<b>196,000</b>
TOLL TREATMENT MODEL (1.0 g/t Au block grade cut-off)	Measured	590,000	2.6	49,000
	Indicated	1,020,000	1.9	62,000
	Inferred	1,110,000	1.7	60,000
<b>TOTAL</b>		<b>2,720,000</b>	<b>2.0</b>	<b>171,000</b>



Figure 8: Exploration drilling at Superior's Greenvale Project

### Magmatic Nickel-Copper-PGE Sulphide Project

Superior's Magmatic Nickel-Copper-PGE Sulphide Project represents a newly recognised magmatic nickel sulphide province. The province has been proven by mining major Anglo American to host Ni-Cu-PGE sulphide mineralisation within intrusions similar to the large-scale magmatic Ni-Cu-PGE sulphide ore bodies of the Norilsk and Voisey's Bay deposits.

More than 40 fertile troctolite intrusions have been identified, with only one intrusion subjected to initial drilling.

Limited historic drilling by Anglo American confirmed the presence of fertile host rocks carrying magmatic sulphide mineralisation with up to **133m @ 0.12% Ni and 105m @ 0.14% Ni (up to 0.58% Ni, 0.28% Cu, 290ppb Pd, 220ppm Pt)**.

Anglo American concluded that **"mafic and ultramafic intrusive complexes that were previously unknown in the area do in fact exist and have the potential to host Ni-Cu-PGE sulphide deposits similar to that at Voisey's Bay" and their drill results "are considered to be very significant" and show that "(i) the rights rocks are present, (ii) there are multiple untested intrusions and (iii) the magmas are fertile – all of which are very encouraging for further Ni [sulphide] exploration"**.

Superior is in a sector-leading Ni-Cu-PGE position, aided by the advantage of having enormous amounts of modern exploration data generated by Anglo American on a proven magmatic Ni-Cu-PGE sulphide province, including large, high resolution airborne geophysical surveys totalling more than 5,070 line-kilometres and information from petrographic and academic studies on key rock types.

As a result, the project represents the most prospective new nickel sulphide province in Australia.







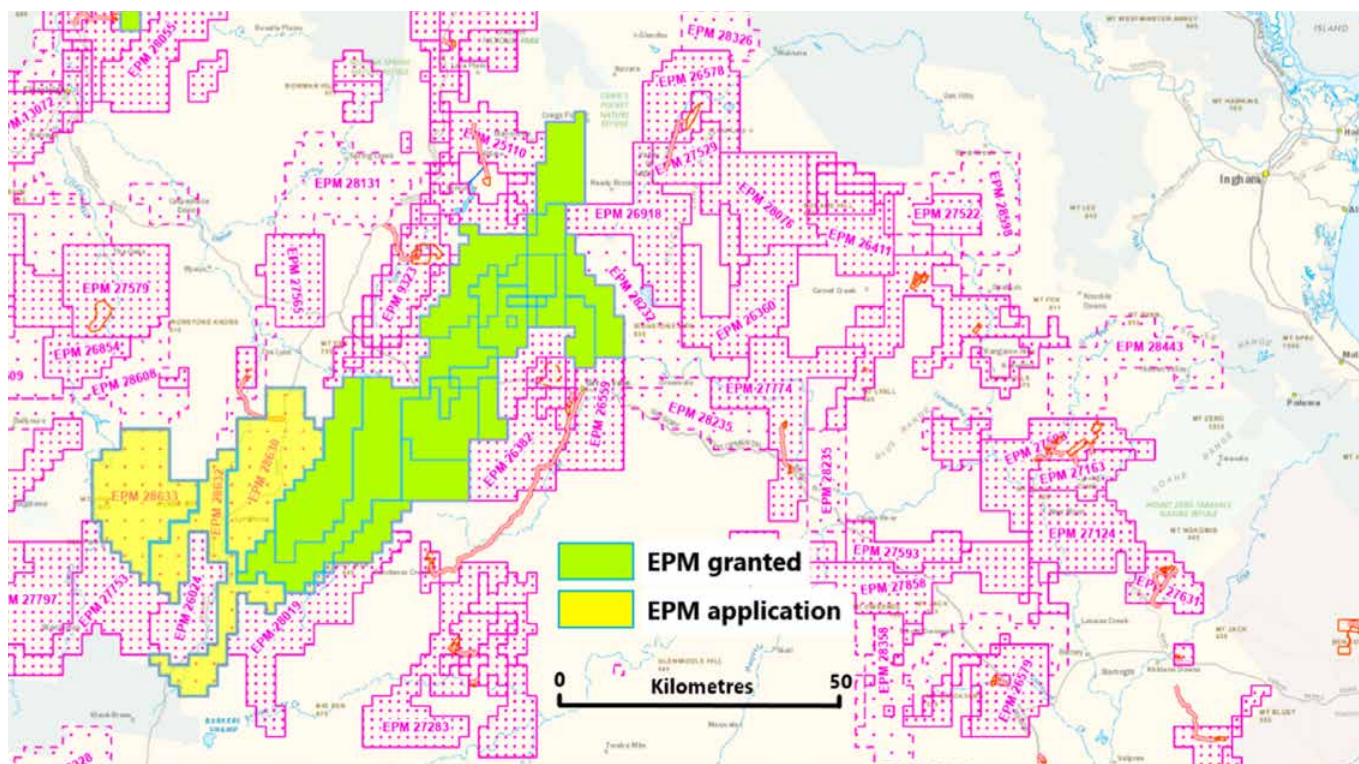


Figure 9: The expanded 100%-owned Greenvale Project tenements showing new EPM applications in yellow.

Two field reconnaissance visits to the project area were conducted during November and December 2022. The objectives of the visits were to conduct rock chip sampling of key intrusions that crop out at surface, establish practical access arrangements with the landholder and identify logistical factors relevant to field exploration work.

The field visits also enabled two well-funded parties to conduct field due diligence on the project as part of commercial discussions relating to potential farm-in and joint venture transactions. Discussions with the parties are continuing.

The parties' interests in Superior's nickel assets do not conflict with each other as their objectives target different styles of nickel mineralisation (i.e. Magmatic Ni-Cu-PGE sulphide and Laterite Ni).

Superior also applied for three new exploration permits for minerals (EPMs), comprising Six Mile Creek, Lyndhurst and Middle Creek. Each of the applications comprised 10 sub-blocks.

covering a total of 900 sq km, being the maximum size permitted for an EPM.

The applications were made for the purpose of covering additional terrain considered prospective for Voisey's Bay style magmatic Ni-Cu-PGE sulphides. These include several high priority magnetic features considered by Anglo American to be priority intrusion-related magmatic sulphide targets.

The area also includes several known uranium occurrences. Superior will collate all available information relating to these, including historic exploration. Notably, the local area is known for uranium mineralisation, with the Oasis Uranium Prospect located around 25 km to the north-northwest.

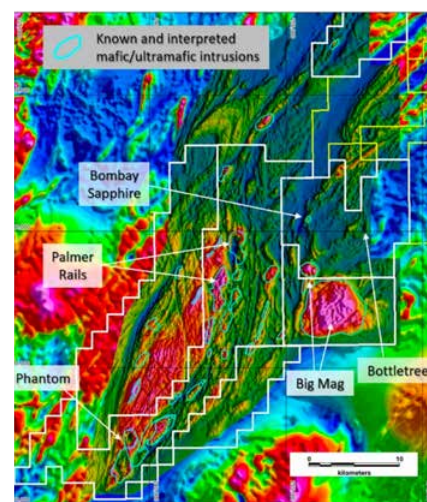


Figure 10: Magmatic Ni-Cu-PGE Project showing key intrusions over aerial magnetics data and tenement boundaries.

## Victor and Nicholson Projects

The Nicholson Project (EPM15670 and EPM18203), together with the Victor Project is located north-west of Mount Isa and provides the Company with opportunities to discover similar Mount Isa style zinc-lead-copper deposits with a portfolio of drill-ready targets. The projects are located in the Carpentaria Zinc Province, which contains 20% of the world's zinc resource inventory.

In the region immediately surrounding Mount Isa, rocks prospective for Mount Isa Style deposits are exposed at or close to surface and as a consequence, have been intensely explored.

In contrast, the Company's Nicholson and Victor projects are located in an equally prospective region that is relatively unexplored. These are the most likely areas within Queensland to make the next Mount Isa discovery.

Exploration work completed to date has identified at least eight large high priority geophysical targets, each of which have potential to be caused by Tier 1-sized stratiform base metal deposits.

In addition, the project area also includes the Walford Creek West Zinc-Lead-Copper-Cobalt Prospect and the Hedleys Uranium Prospect.

During the year, Superior undertook exploration program planning, including a review of the geophysical data.



Figure 11: Rock chip of gabbro outcrop taken from Phantom intrusion carrying fine disseminated sulphides.

### Nicholson Project

<b>8+ Tier 1 potential EM targets</b>	<i>Mount Isa Style (lead-zinc-silver)</i>
<b>Walford Creek West</b>	<i>Mount Isa Style (sulphide copper-lead-zinc-cobalt)</i>
<b>Hedleys Uranium</b>	<i>Uranium</i>

### Victor Project

The Victor Project comprises four exploration permits for minerals covering a total area of 438 sq km. Work conducted by the Company indicates that stratigraphy prospective for the discovery of Mount Isa Style deposits is likely to be present under moderate sedimentary cover within the project area. This area is relatively unexplored.

Superior's exploration strategy is based on the mechanism of geochemical

"leakage" of key metals (lead, zinc and copper) from a deeper Proterozoic mineralised source into the younger sediments overlying the Proterozoic, which may be one of the best methods of targeting prospective areas for Mount Isa style deposits. During the year, Superior undertook exploration program planning, including a review of the geophysical data.

<b>Victor Project</b>	<i>Mount Isa Style (lead-zinc-silver)</i>
<b>Kingfisher</b>	<i>Copper-cobalt</i>

### Hedleys Uranium

Hedleys Uranium is a strong, localised airborne uranium radiometric anomaly associated with a major fault. The anomaly has previously been considered to be an anomaly related to radon gas dissolved in spring waters and has not previously been drilled.

Superior's work indicates that the source of the anomaly lies approximately 100 to 150m above the major unconformity between the sandstones and siltstones of the South Nicholson Group and the underlying carbonaceous siltstones of the Doomadgee Formation and the Mt Les Siltstone.

No work was undertaken on the project during the financial year.







## DIRECTORS' REPORT

Your Directors present their report on the consolidated entity (referred to in this Report as the **Group**) consisting of Superior Resources Limited and the entities it controlled during the year ended 30 June 2023 (**Report**).

### DIRECTORS

The following persons were Directors of the Company during the year and up to the date of this Report:

P H Hwang	Managing Director
C A Fernicola	Chairman and Company Secretary
S J Pooley	Non-Executive Director

### PRINCIPAL ACTIVITIES

During the year the principal activity of the Group was the continued evaluation and expansion of the Bottletree Copper-Gold Prospect. The Group also continued exploration for copper-gold and magmatic nickel sulphide deposits in northern Queensland, Australia. There were no significant changes in the nature of the Company's activities during the year and no significant changes in activity are anticipated.

### DIVIDENDS

There were no dividends paid to members during the financial year (2022: \$nil).

### REVIEW OF OPERATIONS

The loss after tax for the year was \$889,011 (2022: loss of \$597,287).

### Operations Summary

The principal activity of the Group during the full year period was exploration for porphyry copper-gold, gold and nickel-copper-PGE deposits in northern Queensland, Australia. There were no significant changes in the nature of the Group's activities during the reporting period.

- **GREENVALE PROJECT** (porphyry copper, gold and magmatic sulphide nickel-copper-PGE)

- Bottletree Copper-Gold Prospect**

- 2022 Bottletree drilling program was completed on 9 December 2022. A total of six diamond core holes were drilled (BTDD005 – BTDD010) for 4,952.8 metres of core.
    - Detailed studies of drill core from the 2022 program confirm the discovery of a large porphyry-style alteration and Cu-Au-Mo mineralisation system.
    - High-grade molybdenum mineralisation associated with late-stage tonalite porphyry intrusions with up to a spectacular 5.2% Mo (1m assay) was encountered in BTDD010.
    - Western-most hole BTDD010 and deeper part of BTDD005 potentially drilled within close proximity to a targeted porphyry core.
    - Wall rock-hosted copper mineralisation (out of porphyry zone) likely sourced from a mineralised porphyry core, has been shown to extend to at least 850m depth from surface with approximately 270m true width.
    - Primary objective is to build a geological model to enable vectoring of 2023 holes to the central mineralised potassic core(s).
    - Conducted a multi-element soil geochemistry sampling and assaying program.
    - Conducted a gravity survey.
    - Preparation and planning of 2023 Bottletree exploration program.

## DIRECTORS' REPORT

### REVIEW OF OPERATIONS – (continued)

#### Wyandotte Copper Prospect

- Conducted initial field reconnaissance mapping and investigations.
- Prepared and planned of a maiden diamond drilling program.

#### Cockie Creek Porphyry Copper-Gold Prospect

- Progressed a technical study.
- Prepared and planned a maiden diamond drilling program.

Commenced porphyry copper-gold potential study over the entire Greenvale Project area.

#### Magmatic Nickel-Copper-PGE sulphide Project

- Conducted data review and geophysical modelling of magnetic and VTEM survey data at the Big Mag, Dido and Phantom Creek nickel-copper-PGE prospects.
- Applied for three new exploration permits for minerals (EPMs) (Six Mile Creek, Lyndhurst and Middle Creek).

#### Steam Engine Gold Deposit

- Conducting an Options Study for the mining and processing of Steam Engine ore.

- **VICTOR AND NICHOLSON PROJECTS** (SEDEX lead-zinc-silver, copper, uranium)

- Reviewing geological and geophysical data.

### CORPORATE and COMMERCIAL

- The Group completed one capital raising during the fourth calendar Quarter of 2023 comprising a placement of 133,333,333 shares.
- Each share subscribed for was entitled to free options on a 2:1 basis resulting in the issue of 76,666,667 options for no consideration with an expiry date of 30 November 2024 and an exercise price of \$0.06.

### CASH CONSERVATION

The Company's Board maintains cash conservation measures concerning the Company's head office and administration.

## DIRECTORS' REPORT

### SIGNIFICANT CHANGES IN THE STATE OF AFFAIRS

There are no significant changes in the state of affairs of the Group during the financial year.

### MATTERS SUBSEQUENT TO THE END OF THE FINANCIAL YEAR

Apart from other matters already stated, no other matters or circumstances have arisen since 30 June 2023 that have significantly affected, or may significantly affect:

- (a) the Group's operations in future financial years, or
- (b) the results of those operations in future financial years, or
- (c) the Group's state of affairs in future financial years.

### LIKELY DEVELOPMENTS AND EXPECTED RESULTS FROM OPERATIONS

The Group is currently conducting an Options Study on the feasibility of a range of mining and processing options for the mining and processing of gold ore from the Steam Engine Gold Deposit (Greenvale Project).

The Group commenced a maiden drilling program on the Cockie Creek porphyry copper prospect (Greenvale Project) in July 2023. The objectives of the program are to:

- target two high order induced polarisation (IP) chargeability anomalies directly below the Discovery Outcrop. The chargeability anomalies are interpreted to represent the upper zones of a mineralised Cu-Au-Mo porphyry core;
- target interpreted large intrusion centres west of the Discovery Outcrop; and
- establish a JORC (2012)-compliant upgraded Mineral Resource Estimate on the Discovery Outcrop.

### REGULATORY MATTERS

The Group's operations are subject to substantial and significant regulatory control under various Queensland State and Commonwealth legislation. Significant matters that are regulated include mining, environmental, native title and real property. No matters of material concern have arisen in relation to regulatory control up to the date of this Report.

### INFORMATION ON DIRECTORS

#### **Peter Henry Hwang B.Sc.(Hons), LLB, MAIG, MGSA, MQLS**

*Managing director.*

#### *Experience and expertise*

Mr Hwang has over 10 years' experience as a gold, base metals and diamond exploration geologist and 20 years' experience as a solicitor practicing in Queensland and national law firms specialising in resources, commercial, M&A, infrastructure and native title law. He has extensive experience in advising on the development and permitting of mining and major infrastructure projects, mining transactions as well as resource sector mergers and acquisitions transactions.

#### *Other current directorships*

None.

#### *Former directorships in last 3 years*

None.

#### *Special responsibilities*

Managing Director.

#### *Interests in SPQ shares and options*

50,696,338 ordinary shares.

## DIRECTORS' REPORT

### **Carlos Alberto Fernicola B.Com., FCA, F Fin FCIS FGIA CTA**

*Chairman.*

#### *Experience and expertise*

Mr Fernicola is the Principal of Carlos Fernicola & Co., Chartered Accountants. Mr Fernicola is a Fellow of the Institute of Chartered Accountants in Australia, Fellow of the Governance Institute of Australia and Fellow of the Financial Services Institute of Australia. He has over 30 years of experience in accounting, taxation, audit and the financial services industry.

#### *Other current directorships*

None.

#### *Former directorships in last 3 years*

None.

#### *Special responsibilities*

Chairman and Company Secretary.  
Member of the Audit Committee.

#### *Interests in SPQ shares and options*

51,999,998 ordinary shares.

### **Simon James Pooley B.Sc., MAIM, GAICD**

*Non-Executive Director.*

#### *Experience and expertise*

Mr Pooley has 30 years' experience in mine development, operations and mineral exploration. He has held senior industry positions that have demonstrated leadership and management of base and precious metals exploration and mining operations, development of project assessment types including definitive and bankable feasibility studies and their conversion into mining operations and managed teams undertaking exploration evaluations and valuations, project evaluation, resource estimation and exploration management.

#### *Other current directorships*

None.

#### *Former directorships in last 3 years*

None.

#### *Special responsibilities*

Member of the Audit Committee.

#### *Interests in SPQ shares and options*

Nil.

## **COMPANY SECRETARY**

The Company Secretary is Mr Carlos Alberto Fernicola, B.Com, FCA, FFin FCIS FGIA, CTA. Graduate Diploma Advanced Accounting, Graduate Diploma Applied Finance and Investments, Graduate Diploma Corporate Governance and Graduate Certificate Financial Planning.

Mr Fernicola was appointed to the position of Company Secretary on 11 November 2010.



## DIRECTORS' REPORT

### MEETINGS OF DIRECTORS

The numbers of meetings of the company's Board of Directors held during the year ended 30 June 2023, and the numbers of meetings attended by each director were:

#### Board

<i>Director</i>	<i>Meetings Eligible to attend</i>	<i>Meetings attended</i>
PH Hwang	5	5
CA Fernicola	5	5
SJ Pooley	5	5

#### Audit Committee

<i>Director</i>	<i>Meetings eligible to attend</i>	<i>Meetings attended</i>
CA Fernicola	2	2
SJ Pooley	2	2

## DIRECTORS' REPORT

### REMUNERATION REPORT (AUDITED)

The Directors are pleased to present your Group's 2023 remuneration report which sets out remuneration information for Superior Resources Limited's non-executive Directors, executive Directors, and other key management personnel.

The report contains the following sections:

- (a) Directors and key management personnel disclosed in this Report
- (b) Remuneration governance
- (c) Use of remuneration consultants
- (d) Executive remuneration policy and framework
- (e) Relationship between remuneration and Superior Resources Limited's performance
- (f) Non-executive director remuneration policy
- (g) Details of remuneration
- (h) Service agreements
- (i) Details of share-based compensation and bonuses
- (j) Equity instruments held by key management personnel
- (k) Loans to key management personnel
- (l) Other transactions with key management personnel

#### (a) **Directors and key management personnel disclosed in this Report**

*Non-executive and executive Directors*

P H Hwang  
C A Fernicola  
S J Pooley

*Other key management personnel*

Name	Position
C A Fernicola	Company Secretary

#### (b) **Remuneration governance**

The Board is responsible for:

- the over-arching executive remuneration framework;
- the operation of any established incentive plans which may apply to the executive team, including key performance indicators and performance hurdles;
- remuneration levels of executive Directors and other key management personnel; and
- non-executive Directors' fees.

The objective is to ensure that remuneration policies and structures are fair and competitive and aligned with the long-term interests of the Group.

#### (c) **Use of remuneration consultants**

The Group engaged the services of a remuneration consultant during the 2021 financial year.

#### (d) **Executive remuneration policy and framework**

The combination of base pay and superannuation make up the executive Directors' total remuneration. Base pay for the executive Directors is reviewed annually to ensure the executives' pay is competitive with the market. The Board ensures that executive reward satisfies the following key criteria for good reward governance practices:

- competitiveness and reasonableness;
- acceptability to shareholders;
- transparency; and
- capital management.

## DIRECTORS' REPORT

### REMUNERATION REPORT (AUDITED) – (continued)

#### *Long-term incentives*

In the event that the Board of Directors proposes to establish any long-term incentives for executive Directors, the Board will obtain approval at a general meeting of shareholders.

Any issue of options to executive Directors is designed to focus executives on delivering long-term shareholder returns.

#### **(e) Relationship between remuneration and Superior Resources Limited's performance**

There is no direct link between remuneration, company performance and shareholder wealth. The Group's activities focus on the objective of delivery of long-term shareholder returns.

#### **(f) Non-executive director remuneration policy**

Fees and payments to non-executive Directors reflect the demands which are made on, and the responsibilities of those Directors. Non-executive Directors' fees and payments are reviewed annually by the Board.

Non-executive Directors' fees are determined within an aggregate Directors' fee pool limit, which is periodically recommended for approval by shareholders. The maximum total pool currently stands at \$250,000 in aggregate plus statutory superannuation.

#### **(g) Details of remuneration**

The following tables show details of the remuneration entitled to be received by the Directors and the key management personnel of the Group for the current and previous financial year.

## DIRECTORS' REPORT

### REMUNERATION REPORT (AUDITED) – (continued)

2023	Short-term benefits	Post-employment benefits	Share-based payments	
Name	Cash salary and fees \$	Superannuation \$	Options \$	Total \$
<i>Non-executive Directors</i>				
C A Fernicola	48,000	-	-	48,000
S J Pooley	32,727	3,436	-	36,163
<i>Other key management personnel</i>				
C A Fernicola (Company Secretary)	36,000	-	-	36,000
<b>Sub-total non-executive Directors and other key management personnel</b>	<b>116,727</b>	<b>3,436</b>	<b>-</b>	<b>120,163</b>
<i>Executive Directors</i>				
P H Hwang - Managing Director	270,000	28,628	-	298,628
<b>Totals</b>	<b>386,727</b>	<b>32,064</b>	<b>-</b>	<b>418,791</b>

2022	Short-term benefits	Post-employment benefits	Share-based payments	
Name	Cash salary and fees \$	Superannuation \$	Options \$	Total \$
<i>Non-executive Directors</i>				
C A Fernicola	48,000	-	-	48,000
S J Pooley	32,752	3,275	-	36,027
<i>Other key management personnel</i>				
C A Fernicola (Company Secretary)	36,000	-	-	36,000
<b>Sub-total non-executive Directors and other key management personnel</b>	<b>116,752</b>	<b>3,275</b>	<b>-</b>	<b>120,027</b>
<i>Executive Directors</i>				
P H Hwang - Managing Director	240,000	24,175	-	264,175
<b>Totals</b>	<b>356,752</b>	<b>27,450</b>	<b>-</b>	<b>384,202</b>

## DIRECTORS' REPORT

### REMUNERATION REPORT (AUDITED) – (continued)

#### (h) Service agreements

Remuneration and other terms of employment of the Managing Director are formalised in an agreement. The major provisions of the agreement relating to remuneration are set out below.

P H Hwang, *Managing Director*

- Term of employment agreement – indefinite commencing 22 April 2013.
- Base salary was reviewed in June 2023 and set at \$300,000, back dated to 1 January 2023, plus superannuation and is to be reviewed at least annually by the Board.
- Payment of a termination benefit on early termination by the Company, other than for gross misconduct, equal to six months remuneration.
- Agreement may be terminated by employee giving six months' notice in writing.

#### (i) Details of share-based compensation and bonuses

There have been no share-based compensation and bonuses affecting remuneration in the current or a future reporting period.

#### (j) Equity instruments held by key management personnel

The tables below show the number of shares and options in the company that were held during the financial year by key management personnel of the Group, including their close family members and entities related to them.

##### Ordinary Shares

Name	Balance at the start of the year	Received on exercising options	Net purchased / (sold)	Other changes	Balance at the end of the year
P H Hwang	50,696,338	-	-	-	50,696,338
C A Fernicola	51,999,998	-	-	-	51,999,998
S J Pooley	-	-	-	-	-

##### Options Over Unissued Ordinary Shares

Name	Balance at the start of the year	Options Exercised	Net purchased / (sold)	Other changes	Balance at the end of the year
P H Hwang	-	-	-	-	-
C A Fernicola	-	-	-	-	-
S J Pooley	-	-	-	-	-

All options are vested and exercisable.

#### (k) Loans to key management personnel

There were no loans to key management personnel during the financial period.

#### (l) Other transactions with key management personnel and/or their related parties

There were no other transactions with key management personnel or their related parties.

*End of Remuneration Report*



## DIRECTORS' REPORT

### SHARES UNDER OPTION

76,666,667 options were issued during the year with an exercise price of \$0.06 and an expiry date of 30 November 2024.

During the year there were no shares issued on the exercise of options granted.

Since the end of the year, 10,000,000 options with an exercise price of \$0.08 expired on 31 August 2023.

As at the date of this Report, a total of 76,666,667 options are on issue.

### INSURANCE OF OFFICERS

During the year the Group paid a premium of \$49,103 to insure the Directors and Secretary of the Company.

The risks insured include pecuniary orders and legal costs that may result from civil or criminal proceedings that may be brought against the officers in their capacity as officers and any other payments arising in connection with such proceedings. This does not include such liabilities that arise from conduct involving a wilful breach of duty by the officers or the improper use by the officers of their position or of information to gain advantage for themselves or someone else or to cause detriment to the company. It is not possible to apportion the premium between amounts relating to the insurance against legal costs and those relating to other liabilities.

### INDEMNITY AND INSURANCE OF AUDITOR

The Company has not, during or since the end of the financial year, indemnified or agreed to indemnify the auditor of the Company or any related entity against a liability incurred by the auditor.

### PROCEEDINGS ON BEHALF OF THE COMPANY

No person has applied to any Court under section 237 of the Corporations Act 2001 for leave to bring proceedings on behalf of the Company or to intervene in any proceedings to which the Company is a party for the purpose of taking responsibility on behalf of the Company for all or part of those proceedings.

No proceedings have been brought or intervened in or on behalf of the Company with leave of the Court under section 237 of the Corporations Act 2001.

### NON-AUDIT SERVICES

The Group may decide to employ the auditor on assignments additional to their statutory audit duties where the auditor's expertise and experience with the Group are important.

Details of amounts paid or payable to the auditor for audit services provided during the year are outlined in Note 20 to the financial statements. There are no non-audit services provided during the year.

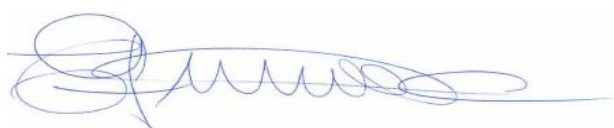
### AUDITOR'S INDEPENDENCE DECLARATION

A copy of the auditor's independence declaration as required under section 307C of the Corporations Act 2001 is set out on page 28.

### AUDITOR

The auditor of the Group is William Buck (Qld).

This Report is made in accordance with a resolution of the Directors.



CA Fernicola  
Chairman

Brisbane, 26<sup>th</sup> day of September 2023



## AUDITOR'S INDEPENDENCE DECLARATION

### AUDITOR'S INDEPENDENCE DECLARATION UNDER S 307C OF THE CORPORATIONS ACT 2001 TO THE DIRECTORS OF SUPERIOR RESOURCES LIMITED

I declare that, to the best of my knowledge and belief, during the year ended 30 June 2023, there have been:

- no contraventions of the auditor independence requirements as set out in the *Corporations Act 2001* in relation to the audit; and
- no contraventions of any applicable code of professional conduct in relation to the audit.

A handwritten signature in black ink that reads "William Buck".

**William Buck (Qld)**  
ABN 21 559 713 106

A handwritten signature in black ink, appearing to be "J A Latif", with a horizontal line drawn underneath.

**J A Latif**  
Director

Brisbane, 26 September 2023

## CORPORATE GOVERNANCE

Corporate Governance practices that form the basis of a comprehensive system of control and accountability for the administration of the Group have been adopted. The Board is committed to administering the policies and procedures with openness and integrity, pursuing the true spirit of corporate governance commensurate with the Company's needs.

The Company has reviewed its corporate governance practices against the Corporate Governance Principles and Recommendations (4<sup>th</sup> edition) published by the ASX Corporate Governance Council.

A description of the Company's current corporate governance practices is set out in the Company's corporate governance statement. This statement is available on the Company's website and can be viewed at [www.superiorresources.com.au](http://www.superiorresources.com.au).

**CONSOLIDATED STATEMENT OF PROFIT OR LOSS  
FOR THE YEAR ENDED 30 JUNE 2023**

	Note	2023 \$	2022 \$
Other income	8	54	-
Accounting and audit fees		(33,172)	(29,037)
Administration expenses		(830,267)	(547,468)
Depreciation and amortisation	13	(2,070)	(5,355)
Office rent and outgoings		(19,715)	(15,427)
Tenement expenditure written-off	14	(3,841)	-
<b>Total expenses</b>		<b>(889,065)</b>	<b>(597,287)</b>
Loss before income tax		(889,011)	(597,287)
Income tax (expense) / benefit	9	-	-
<b>Loss after tax for the year from continuing operations attributable to owners of Superior Resources Limited</b>		<b>(889,011)</b>	<b>(597,287)</b>
		<b>Cents</b>	<b>Cents</b>
<b>Earnings (loss) per share</b>			
Basic earnings (loss) per share	25	(0.05)	(0.04)
Diluted earnings (loss) per share	25	(0.05)	(0.04)

The accompanying notes form part of these financial statements.



**CONSOLIDATED STATEMENT OF OTHER COMPREHENSIVE INCOME  
FOR THE YEAR ENDED 30 JUNE 2023**

	<b>Note</b>	<b>2023</b>	<b>2022</b>
		<b>\$</b>	<b>\$</b>
<b>Loss for the year from continuing operations attributable to owners of Superior Resources Limited</b>		(889,011)	(597,287)
<i>Items that will not be reclassified subsequently to profit or loss:</i>			
Fair value gains / (losses) on financial assets at fair value through other comprehensive income, net of tax	18	8,964	(6,723)
Other comprehensive income for the year, net of tax		8,964	(6,723)
<b>Total comprehensive loss for the year, net of tax, attributable to owners of Superior Resources Limited</b>		(880,047)	(604,010)

The accompanying notes form part of these financial statements.

**CONSOLIDATED STATEMENT OF FINANCIAL POSITION  
AS AT 30 JUNE 2023**

	Note	2023 \$	2022 \$
<b>ASSETS</b>			
<b>Current Assets</b>			
Cash and cash equivalents	10	3,946,671	4,097,824
Trade and other receivables	11	98,231	77,041
Financial assets	12	42,300	33,336
<b>Total Current Assets</b>		<u>4,087,202</u>	<u>4,208,201</u>
<b>Non-Current Assets</b>			
Plant and equipment	13	8,277	10,347
Exploration and evaluation assets	14	11,769,482	8,888,186
Other	15	75,000	41,500
<b>Total Non-Current Assets</b>		<u>11,852,759</u>	<u>8,940,033</u>
<b>Total Assets</b>		<u>15,939,961</u>	<u>13,148,234</u>
<b>LIABILITIES</b>			
<b>Current Liabilities</b>			
Payables	16	603,749	661,376
<b>Total Current Liabilities</b>		<u>603,749</u>	<u>661,376</u>
<b>Total Liabilities</b>		<u>603,749</u>	<u>661,376</u>
<b>Net Assets</b>		<u>15,336,212</u>	<u>12,486,858</u>
<b>Equity</b>			
Contributed equity	17	24,318,029	20,588,628
Reserves	18	(2,907,183)	(2,916,147)
Accumulated losses		(6,074,634)	(5,185,623)
<b>Total Equity</b>		<u>15,336,212</u>	<u>12,486,858</u>

The accompanying notes form part of these financial statements.

**CONSOLIDATED STATEMENT OF CHANGES IN EQUITY  
FOR THE YEAR ENDED 30 JUNE 2023**

	Contributed Equity \$	Reserves \$	Accumulated losses \$	Total \$
<b>Balance at 30 June 2022</b>	<b>20,588,628</b>	<b>(2,916,147)</b>	<b>(5,185,623)</b>	<b>12,486,858</b>
Loss for the year	-	-	(889,011)	(889,011)
Other comprehensive income / (loss)	-	8,964	-	8,964
<b>Total comprehensive income for the year</b>	<b>-</b>	<b>8,964</b>	<b>(889,011)</b>	<b>(880,047)</b>
<b>Transactions with owners in their capacity as owners:</b>				
Contributions of equity, net of transaction costs	3,729,401	-	-	3,729,401
<b>Balance at 30 June 2023</b>	<b>24,318,029</b>	<b>(2,907,183)</b>	<b>(6,074,634)</b>	<b>15,336,212</b>
<b>Balance at 30 June 2021</b>	<b>14,960,308</b>	<b>(3,123,316)</b>	<b>(4,588,336)</b>	<b>7,248,656</b>
Loss for the year	-	-	(597,287)	(597,287)
Other comprehensive income / (loss)	-	(6,723)	-	(6,723)
<b>Total comprehensive income for the year</b>	<b>-</b>	<b>(6,723)</b>	<b>(597,287)</b>	<b>(604,010)</b>
<b>Transactions with owners in their capacity as owners:</b>				
Contributions of equity, net of transaction costs	5,628,320	213,892	-	5,842,212
<b>Balance at 30 June 2022</b>	<b>20,588,628</b>	<b>(2,916,147)</b>	<b>(5,185,623)</b>	<b>12,486,858</b>

The accompanying notes form part of these financial statements.



**CONSOLIDATED STATEMENT OF CASH FLOWS  
FOR THE YEAR ENDED 30 JUNE 2023**

	Note	2023 \$	2022 \$
<b>Cash flows from operating activities</b>			
Payments to suppliers and employees (GST inclusive)		(953,858)	(597,997)
Interest received		54	-
<b>Net cash outflow from operating activities</b>	24	(953,804)	(597,997)
<b>Cash flows from investing activities</b>			
Payments for exploration expenditure		(2,892,112)	(2,849,909)
Payments for plant and equipment		-	(2,684)
Payments of security deposits		(33,500)	(8,000)
<b>Net cash outflow from investing activities</b>		(2,925,612)	(2,860,593)
<b>Cash flows from financing activities</b>			
Share application moneys (refunded)/received		(1,138)	(1,596)
Proceeds on issue of shares		4,000,000	6,247,962
Payment of capital raising costs		(270,599)	(405,750)
<b>Net cash inflow from financing activities</b>		3,728,263	5,840,616
Net increase in cash held		(151,153)	2,382,026
Cash at beginning of financial year		4,097,824	1,715,798
<b>Cash at the end of financial year</b>	10	3,946,671	4,097,824

The accompanying notes form part of these financial statements.

## NOTES TO THE CONSOLIDATED FINANCIAL STATEMENTS FOR THE YEAR ENDED 30 JUNE 2023

### 1. General Information

Superior Resources Limited (**Company**) is a company limited by shares, incorporated, and domiciled in Australia. The Company's shares are listed on the Australian Securities Exchange.

The registered office and principal place of business of the Company is:

Suite 3, 5 Gardner Close  
Milton QLD 4064  
Ph 07 3847 2887

The financial statements are for the Group consisting of Superior Resources Limited and its subsidiaries (the **consolidated entity** or the **Group**).

### 2. Significant Accounting Policies

#### (a) *Statement of compliance*

These financial statements are general purpose financial statements which have been prepared in accordance with the Corporations Act 2001, Australian Accounting Standards and Interpretations of the Australian Accounting Standard Board and in compliance with International Financial Reporting Standards ('IFRS') as issued by the International Accounting Standards Board. The Group is a for-profit entity for financial reporting purposes under Australian Accounting Standards. Material accounting policies adopted in the preparation of these financial statements are presented below and have been consistently applied unless stated otherwise.

The financial statements were authorised for issue by the Directors on 26 September 2023.

#### (b) *Basis of preparation*

Except for cash flow information, the financial statements have been prepared on an accrual basis and are based on historical costs, modified, where applicable, by the measurement at fair value of selected financial assets and financial liabilities.

#### (c) *Principles of consolidation*

The consolidated financial statements incorporate all of the assets, liabilities and results of the Parent (Superior Resources Limited) and all of the subsidiaries (including any structured entities). Subsidiaries are entities the Parent controls. The Parent controls an entity when it is exposed to, or has rights to, variable returns from its involvement with the entity and has the ability to affect those returns through its power over the entity. A list of the subsidiaries or controlled operations is provided in Note 26.

The assets, liabilities and results of all subsidiaries are fully consolidated into the financial statements of the Group from the date on which control is obtained by the Group. The consolidation of a subsidiary is discontinued from the date that control ceases. Intercompany transactions, balances and unrealised gains or losses on transactions between Group entities are fully eliminated on consolidation. Accounting policies of subsidiaries have been changed and adjustments made where necessary to ensure uniformity of the accounting policies adopted by the Group.

The acquisition method of accounting is used to account for business combinations by the Group.

Non-controlling interests in the results and equity of subsidiaries are shown separately in the consolidated statement of profit or loss, statement of other comprehensive income, statement of changes in equity and statement of financial position, respectively.

## NOTES TO THE CONSOLIDATED FINANCIAL STATEMENTS FOR THE YEAR ENDED 30 JUNE 2023

### 2. Significant Accounting Policies (continued)

#### (d) **Revenue recognition**

Revenue is recognised to depict the transfer of promised goods or services to customers in an amount that reflects the consideration to which the entity expects to be entitled in exchange for the goods or services. Revenue is recognised when the performance obligations of a contract are satisfied.

Interest revenue is recognised using the effective interest rate method. This is a method of calculating the amortised cost of a financial asset and allocating the interest income over the relevant period using the effective interest rate, which is the rate that exactly discounts estimated future cash receipts through the expected life of the financial asset to the net carrying amount of the financial asset.

Other revenue is recognised when it is received or when the right to receive payment is established.

All revenue is stated net of the amount of goods and services tax (GST).

#### *Government grants*

Government grants relating to costs are deferred and recognised in profit or loss over the period necessary to match them with the costs that they are intended to compensate. Government grants are recognised when there are reasonable assurance that the funding conditions will be complied and the grants will be received.

#### (e) **Income Tax**

The income tax expense or revenue for the period is the tax payable on the current period's taxable income based on the applicable income tax rate for each jurisdiction adjusted by changes in deferred tax assets and liabilities attributable to temporary differences and to unused tax losses.

Deferred income tax is provided in full, using the liability method, on temporary differences arising between the tax bases of assets and liabilities and their carrying amounts in the financial statements. However, the deferred income tax is not accounted for if it arises from initial recognition of an asset or liability in a transaction other than a business combination that at the time of the transaction affects neither accounting nor taxable profit or loss. Deferred income tax is determined using tax rates (and laws) that have been enacted or substantially enacted by the reporting date and are expected to apply when the related deferred income tax asset is realised or the deferred income tax liability is settled.

Deferred tax assets are recognised for deductible temporary differences and unused tax losses only if it is probable that future taxable amounts will be available to utilise those temporary differences and losses.

Deferred tax assets and liabilities are offset when there is a legally enforceable right to offset current tax assets and liabilities and when the deferred tax balances relate to the same taxation authority. Current tax assets and tax liabilities are offset where the entity has a legally enforceable right to offset and intends either to settle on a net basis, or to realise the assets and settle the liability simultaneously.

Current and deferred tax is recognised in profit or loss, except to the extent that it relates to items recognised in other comprehensive income or directly in equity. In this case, the tax is also recognised in other comprehensive income or directly in equity, respectively.

#### (f) **Cash and cash equivalents**

For the consolidated statement of cash flows presentation purposes, cash and cash equivalents includes cash on hand and deposits held at call with financial institutions, other short-term, highly liquid investments with original maturities of three months or less that are readily convertible to known amounts of cash and which are subject to an insignificant risk of changes in value, and bank overdrafts.



## NOTES TO THE CONSOLIDATED FINANCIAL STATEMENTS FOR THE YEAR ENDED 30 JUNE 2023

### 2. Significant Accounting Policies (continued)

#### (g) Financial instruments

##### Initial Recognition and Measurement

Financial assets and financial liabilities are recognised when the Group becomes a party to the contractual provisions of the financial instrument. Financial assets will be recognised on the date that the Group becomes contractually bound to the relevant asset purchase or sale transaction (i.e. trade date accounting is adopted).

Financial instruments (except for trade receivables) are initially measured at fair value plus transaction costs, except where the instrument is classified "at fair value through profit or loss", in which case transaction costs are expensed to profit or loss immediately. Where available, quoted prices in an active market are used to determine fair value. In other circumstances, valuation techniques are adopted.

Trade receivables are initially measured at the transaction price if the trade receivables do not contain a significant financing component or if the practical expedient was applied as specified in paragraph 63 of AASB 15: *Revenue from Contracts with Customers*.

##### Classification and Subsequent Measurement

###### Financial assets

Financial assets are subsequently measured at:

- amortised cost;
- fair value through other comprehensive income; or
- fair value through profit and loss.

Measurement is on the basis of the two primary criteria, being:

- the contractual cash flow characteristics of the financial asset; and
- the business model for managing the financial assets.

A financial asset that meets the following conditions is subsequently measured at amortised cost:

- the financial asset is managed solely to collect contractual cash flows; and
- the contractual terms within the financial asset give rise to cash flows that are solely payments of principal and interest on the principal amount outstanding on specified dates.

A financial asset that meets the following conditions is subsequently measured at fair value through other comprehensive income:

- the contractual terms within the financial asset give rise to cash flows that are solely payments of principal and interest on the principal amount outstanding on specified dates; and
- the business model for managing the financial assets comprises both contractual cash flows collection and the selling of the financial asset.

By default, all other financial assets that do not meet the measurement conditions of amortised cost and fair value through other comprehensive income are subsequently measured at fair value through profit or loss.

## NOTES TO THE CONSOLIDATED FINANCIAL STATEMENTS FOR THE YEAR ENDED 30 JUNE 2023

### 2. Significant Accounting Policies (continued)

#### *Financial liabilities*

Financial liabilities are subsequently measured at:

- amortised cost; or
- fair value through profit and loss.

A financial liability is measured at fair value through profit and loss if the financial liability is:

- a contingent consideration of an acquirer in a business combination to which AASB 3 Business Combinations applies;
- held for trading; or
- initially designated as at fair value through profit or loss.

All other financial liabilities are subsequently measured at amortised cost using the effective interest method.

#### *Equity instruments*

At initial recognition, as long as the equity instrument is not held for trading and not a contingent consideration recognised by an acquirer in a business combination to which AASB 3 Business Combinations applies, the Group made an irrevocable election to measure any subsequent changes in fair value of the equity instruments in other comprehensive income, while the dividend revenue received on underlying equity instruments investment will still be recognised in profit or loss.

Regular way purchases and sales of financial assets are recognised and derecognised at settlement date in accordance with the Group's accounting policy.

#### **Derecognition**

Derecognition refers to the removal of a previously recognised financial asset or financial liability from the statement of financial position.

#### *Derecognition of financial liabilities*

A liability is derecognised when it is extinguished (i.e. when the obligation in the contract is discharged, cancelled or expires). An exchange of an existing financial liability for a new one with substantially modified terms or a substantial modification to the terms of a financial liability, is treated as an extinguishment of the existing liability and recognition of a new financial liability.

The difference between the carrying amount of the financial liability derecognised and the consideration paid and payable, including any non-cash assets transferred or liabilities assumed, is recognised in profit or loss.

#### *Derecognition of financial assets*

A financial asset is derecognised when the holder's contractual rights to its cash flows expires, or the asset is transferred in such a way that all the risks and rewards of ownership are substantially transferred.

All the following criteria need to be satisfied for derecognition of financial assets:

- the right to receive cash flows from the asset has expired or been transferred;
- all risk and rewards of ownership of the asset have been substantially transferred; and
- the Group no longer controls the asset (i.e. no practical ability to make unilateral decision to sell the asset to a third party).

## NOTES TO THE CONSOLIDATED FINANCIAL STATEMENTS FOR THE YEAR ENDED 30 JUNE 2023

### 2. Significant Accounting Policies (continued)

#### Impairment

The Group recognises a loss allowance for expected credit losses on:

- financial assets that are measured at amortised cost or fair value through other comprehensive income;
- lease receivables;
- contract assets (e.g. amount due from customers under construction contracts);
- loan commitments that are not measured at fair value through profit or loss; and
- financial guarantee contracts that are not measured at fair value through profit or loss.

Loss allowance is not recognised for:

- financial assets measured at fair value through profit or loss; or
- equity instruments measured at fair value through other comprehensive income.

Expected credit losses are the probability-weighted estimate of credit losses over the expected life of a financial instrument. A credit loss is the difference between all contractual cash flows that are due and all cash flows expected to be received, all discounted at the original effective interest rate of the financial instrument.

#### *Recognition of expected credit losses in financial statements*

At each reporting date, the Group recognises the movement in the loss allowance as an impairment gain or loss in the statement of profit or loss.

The carrying amount of financial assets measured at amortised cost includes the loss allowance relating to that asset.

Assets measured at fair value through other comprehensive income are recognised at fair value, with changes in fair value recognised in other comprehensive income. Amounts in relation to change in credit risk are transferred from other comprehensive income to profit or loss at every reporting period.

For financial assets that are unrecognised (e.g. loan commitments yet to be drawn, financial guarantees), a provision for loss allowance is created in the statement of financial position to recognise the loss allowance.

#### **(h) Plant and equipment**

Plant and equipment is stated at historical cost less depreciation. Historical cost includes expenditure that is directly attributable to the acquisition of the items.

Depreciation is calculated using the straight-line method to allocate their cost, net of their residual values, over their estimated useful lives, as follows:

Equipment / Software: 3 – 5 years

The asset's residual values and useful lives are reviewed and adjusted if appropriate at each balance date.

An asset's carrying amount is written down immediately to its recoverable amount if the asset's carrying amount is greater than its estimated recoverable amount.

Gains and losses on disposals are determined by comparing proceeds with carrying amount. These are included in the consolidated statement of profit or loss. When revalued assets are sold, it is the Group policy to transfer the amounts included in other reserves in respect of those assets to retained earnings.

#### **(i) Trade and other payables**

These amounts represent liabilities for goods and services provided to the company prior to the end of the financial year which are unpaid. The amounts are unsecured and are usually paid within 30 days of recognition.



## NOTES TO THE CONSOLIDATED FINANCIAL STATEMENTS FOR THE YEAR ENDED 30 JUNE 2023

### 2. Significant Accounting Policies (continued)

#### **(j) Exploration and evaluation assets**

Exploration and evaluation costs are accumulated separately for each area of interest until such time as the area is abandoned or sold. The realisation of the value of the exploration and evaluation assets carried forward depends on any commercial results that may be obtained through successful development and exploitation of the area of interest or alternatively by its sale. If an area of interest is abandoned or is considered to be of no further commercial interest the accumulated exploration and evaluation assets relating to the area are written off against income in the year of abandonment. Some exploration and evaluation assets may also be written off where areas of interest are partly relinquished and in cases where uncertainty exists as to the value, provisions for possible diminution in value are established.

When production commences, the accumulated costs for the relevant area of interest are amortised over the life of the area according to the rate of depletion of the economically recoverable reserves.

A regular review is undertaken of each area of interest to determine the appropriateness of continuing to capitalise costs in relation to that area.

#### **(k) Contributed equity**

Ordinary shares are classified as equity.

Incremental costs directly attributable to the issue of new shares or options are shown in equity as a deduction, net of tax, from the proceeds.

#### **(l) Dividends**

Provision is made for the amount of any dividend declared, being appropriately authorised and no longer at the discretion of the entity, on or before the end of the financial year but not distributed at balance date.

#### **(m) Earnings per share**

##### *Basic earnings per share*

Basic earnings per share is calculated by dividing the profit or loss attributable to equity holders of the Group, excluding any costs of servicing equity other than ordinary shares, by the weighted average number of ordinary shares outstanding during the financial year, adjusted for bonus elements in ordinary shares issued during the year.

##### *Diluted earnings per share*

Diluted earnings per share adjusts the figures used in the determination of basic earnings per share to take into account the after income tax effect of interest and other financing costs associated with dilutive potential ordinary shares and the weighted average number of shares assumed to have been issued for no consideration in relation to dilutive potential ordinary shares.

## NOTES TO THE CONSOLIDATED FINANCIAL STATEMENTS FOR THE YEAR ENDED 30 JUNE 2023

### 2. Significant Accounting Policies (continued)

#### (n) **Goods and Services Tax (GST)**

Revenues, expenses and assets are recognised net of the amount of associated GST, unless the GST incurred is not recoverable from the taxation authority. In this case it is recognised as part of the cost of acquisition of the asset or as part of the expense.

Receivables and payables are stated inclusive of the amount of GST receivable or payable. The net amount of GST recoverable from, or payable to, the taxation authority is included with other receivables or payables in the statement of financial position.

Cash flows are presented on a gross basis. The GST components of cash flows arising from investing or financing activities which are recoverable from, or payable to the taxation authority, are presented as operating cash flows.

#### (o) **Employee benefits**

##### *Short-term obligations*

Liabilities for wages and salaries, including non-monetary benefits, annual leave and accumulating sick leave, which are expected to be settled within 12 months after the end of the period in which the employees render the related services, are recognised in respect of employees' services up to the end of the reporting period and are measured at the amounts expected to be paid when the liabilities are settled. The liability for annual leave is recognised in the provision for employee entitlements. All other short-term employee benefit obligations are presented as payables.

##### *Other long-term employee benefit obligations*

The liability for long service leave and annual leave which is not expected to be settled within 12 months after the end of the period in which the employees render the related services, is recognised in the provision for employee benefits and measured as the present value of expected future payments to be made in respect of services provided by employees up to the end of the reporting period. Consideration is given to expected future wage and salary levels, employee departures and periods of service.

Expected future payments are discounted using market yields at the end of the reporting period on government bonds with terms and currencies that match, as closely as possible, the estimated future cash outflows.

The obligations are presented as current liabilities in the statement of financial position if the entity does not have an unconditional right to defer settlement for at least twelve months after the reporting date, regardless of when the actual settlement is expected to occur.

#### (p) **Parent entity financial information**

The financial information for the parent entity, Superior Resources Limited, disclosed in note 27 has been prepared on the same basis as the consolidated financial statements.

#### (q) **Comparative Figures**

When required by Australian Accounting Standards, comparative figures have been adjusted to conform to changes in presentation for the current financial year.

Where the Group retrospectively applies an accounting policy, makes a retrospective restatement or reclassifies items in its financial statements, an additional (third) statement of financial position as at the beginning of the preceding period in addition to the minimum comparative financial statements is presented.

## NOTES TO THE CONSOLIDATED FINANCIAL STATEMENTS FOR THE YEAR ENDED 30 JUNE 2023

### 2. Significant Accounting Policies (continued)

#### (r) Fair Value of Assets and Liabilities

The Group measures some of its assets and liabilities at fair value on either a recurring or non-recurring basis, depending on the requirements of the applicable Accounting Standard.

Fair value is the price the Group would receive to sell an asset or would have to pay to transfer a liability in an orderly (i.e. unforced) transaction between independent, knowledgeable and willing market participants at the measurement date.

As fair value is a market-based measure, the closest equivalent observable market pricing information is used to determine fair value. Adjustments to market values may be made having regard to the characteristics of the specific asset or liability. The fair values of assets and liabilities that are not traded in an active market are determined using one or more valuation techniques. These valuation techniques maximise, to the extent possible, the use of observable market data.

To the extent possible, market information is extracted from either the principal market for the asset or liability (i.e. the market with the greatest volume and level of activity for the asset or liability) or, in the absence of such a market, the most advantageous market available to the entity at the end of the reporting period (i.e. the market that maximises the receipts from the sale of the asset or minimises the payments made to transfer the liability, after taking into account transaction costs and transport costs).

For non-financial assets, the fair value measurement also takes into account a market participant's ability to use the asset in its highest and best use or to sell it to another market participant that would use the asset in its highest and best use.

The fair value of liabilities and the entity's own equity instruments (excluding those related to share-based payment arrangements) may be valued, where there is no observable market price in relation to the transfer of such financial instruments, by reference to observable market information where such instruments are held as assets. Where this information is not available, other valuation techniques are adopted and, where significant, are detailed in the respective note to the financial statements.

#### (s) Impairment of Non-financial Assets

At the end of each reporting period, the Group assesses whether there is any indication that a non-financial asset may be impaired. The assessment will include the consideration of external and internal sources of information including dividends received from subsidiaries, associates or joint ventures deemed to be out of pre-acquisition profits. If such an indication exists, an impairment test is carried out on the asset by comparing the recoverable amount of the asset, being the higher of the asset's fair value less costs of disposal and value in use, to the asset's carrying amount. Any excess of the asset's carrying amount over its recoverable amount is recognised immediately in profit or loss, unless the asset is carried at a revalued amount in accordance with another Standard (for example in accordance with the revaluation model in AASB 116: Property, Plant and Equipment). Any impairment loss of a revalued asset is treated as a revaluation decrease in accordance with that other Standard.

Where it is not possible to estimate the recoverable amount of an individual asset, the Group estimates the recoverable amount of the cash-generating unit to which the asset belongs.

Impairment testing is performed annually for goodwill, intangible assets with indefinite lives and intangible assets not yet available for use.

When an impairment loss subsequently reverses, the carrying amount of the asset (or cash-generating unit) is increased to the revised estimate of its recoverable amount, but so that the increased carrying amount does not exceed the carrying amount that would have been determined had no impairment loss been recognised for the asset (or cash-generating unit) in prior years. A reversal of an impairment loss is recognised immediately in profit or loss, unless the relevant asset is carried at a revalued amount, in which case the reversal of the impairment loss is treated as a revaluation increase.

## NOTES TO THE CONSOLIDATED FINANCIAL STATEMENTS FOR THE YEAR ENDED 30 JUNE 2023

### 3. New and Amended Accounting Standards

The Group has adopted all of the new or amended Accounting Standards and Interpretations issued by the Australian Accounting Standards Board ('AASB') that are mandatory for the current reporting period. There was no material impact to the financial statements.

Any new or amended Accounting Standards or Interpretations that are not yet mandatory have not been adopted.

There are no other standards that are not yet effective and that are expected to have a material impact on the consolidated entity in the current or future reporting periods and on foreseeable future transactions.

### 4. Financial Risk Management

The Group's overall risk management plan seeks to minimise potential risks resulting from the unpredictability of financial markets.

The Group does not actively engage in the trading of financial assets for speculative purposes nor does it write options. The most significant financial risks to which the Group are exposed are credit risk, liquidity risk, market risk and cash flow interest rate risk.

The Group holds the following financial assets and liabilities:

	2023 \$	2022 \$
<b>Financial assets</b>		
Cash and cash equivalents (Note 10)	3,946,671	4,097,824
Other receivables (Note 11)	270	30,653
Financial assets at fair value through other comprehensive income (Note 12)	42,300	33,336
	<b>3,989,241</b>	<b>4,161,813</b>
<b>Financial liabilities</b>		
Trade and other payables (Note 16)	412,704	489,878
	<b>412,704</b>	<b>489,878</b>

Risk management is carried out by the Group's finance function under policies and objectives which have been approved by the Board of Directors. The Managing Director has been delegated the authority for designing and implementing processes which follow the objectives and policies.

The Board receives monthly reports which provide details of the effectiveness of the processes and policies in place.



## NOTES TO THE CONSOLIDATED FINANCIAL STATEMENTS FOR THE YEAR ENDED 30 JUNE 2023

### 4. Financial Risk Management (continued)

#### (a) Credit risk

Credit risk is the risk of loss from a counterparty failing to meet its financial obligations to the Group.

The maximum exposure to credit risk, excluding the value of any collateral or other security, at balance date to recognised financial assets is the carrying amount of those assets, net of any allowance for expected credit loss, as disclosed in the consolidated statement of financial position and notes to the financial statements.

Credit risk arises from cash and cash equivalents and deposits with banks and financial institutions. For bank and financial institutions, only independently rated parties with a minimum rating of 'A' are accepted.

The credit quality of financial assets that are neither past due nor impaired can be assessed by reference to external credit ratings (if available).

	2023 \$	2022 \$
Trade and other receivables	270	30,653
	<b>270</b>	<b>30,653</b>

Other than cash and cash equivalents, the most significant financial assets are trade and other receivables. The Group does not have any material credit risk exposure to any single debtor or Group of debtors under financial instruments entered into by the Group. There were no past due debts at balance date requiring consideration of impairment provisions.

#### (b) Liquidity risk

Prudent liquidity risk management implies maintaining sufficient cash and marketable securities to meet obligations when due.

The Group manages liquidity risk by continuously monitoring forecast and actual cash flows. No finance facilities were available to the Group at the end of the reporting period.

#### Maturities of financial liabilities

The table below analyses the Group's financial liabilities into relevant maturity groupings.

Contractual maturities of financial liabilities	Within 1 year	Between 1 and 2 years	Between 2 and 5 years	Over 5 years	Total contractual cash flows	Carrying amount
<b>At 30 June 2023</b>	<b>\$</b>	<b>\$</b>	<b>\$</b>	<b>\$</b>	<b>\$</b>	<b>\$</b>
Trade and other payables	412,704	-	-	-	412,704	412,704
	412,704	-	-	-	412,704	412,704
<b>At 30 June 2022</b>						
Trade and other payables	489,878	-	-	-	489,878	489,878
	489,878	-	-	-	489,878	489,878

## NOTES TO THE CONSOLIDATED FINANCIAL STATEMENTS FOR THE YEAR ENDED 30 JUNE 2023

### 4. Financial Risk Management (continued)

#### (c) Market risk

The Group is exposed to equity securities price risk. This arises from securities investments held by the Group in Deep Yellow Limited and classified on the statement of financial position as financial assets.

The Group is not exposed to any commodity price risk.

The table below summaries the impact of increases and decreases in the Deep Yellow Limited share price on the Group's total comprehensive income and loss for the year and on equity. The analysis is based on the assumption that the share price had increased or decreased by 25% (2022: 25%) from balance date fair value with all other variables held constant.

	Impact on post-tax loss				Impact on reserves			
	2023		2022		2023		2022	
	\$		\$		\$		\$	
	+25%	-25%	+25%	-25%	+25%	-25%	+25%	-25%
Investment in Deep Yellow Limited	-	-	-	-	10,575	(10,575)	8,334	(8,334)

#### (d) Cash flow and fair value interest rate risk

As the Group has no significant interest-bearing assets or borrowings, the Group's income and operating cash flows are not materially exposed to changes in market interest rates.

#### (e) Fair value measurements

The fair value of financial assets and financial liabilities must be estimated for recognition and measurement or for disclosure purposes. The net fair value of financial assets and financial liabilities approximates the respective carrying values as disclosed in the consolidated statement of financial position and the notes to the financial statements.

### 5. Critical Accounting Estimates and Judgements

Estimates and judgements are continually evaluated and are based on historical experience and other factors, including expectations of future events that may have a financial impact on the entity and that are believed to be reasonable under the circumstances.

#### Critical judgements in applying the entity's accounting policies

The Group has capitalised non-current exploration expenditure of \$11,769,482 (2022: \$8,888,186).

This amount includes costs directly associated with exploration. These costs are capitalised as an intangible asset until assessment of the permit is complete and the results have been evaluated. These costs include direct employee remuneration, materials, drilling costs, delay costs, rental payments and payments to contractors. The expenditure is carried forward until such a time as the asset moves into the development phase, is abandoned or sold. Given exploration activities have not yet reached a stage which permits a reasonable assessment of the existence or otherwise of recoverable resources and the difficulty in forecasting cash flows to assess the fair value of exploration expenditure, there is uncertainty as to the carrying value of exploration expenditure. The ultimate recovery of the carrying value of exploration expenditure is dependent upon the successful development and commercial exploitation or, alternatively, sale of the Group's interest in the tenements.

## NOTES TO THE CONSOLIDATED FINANCIAL STATEMENTS FOR THE YEAR ENDED 30 JUNE 2023

### 6. Going Concern Principle

Notwithstanding that the Group incurred an operating loss after tax of \$889,011 (2022: loss of \$597,287) and a net cash outflow from operating activities of \$953,804 (2022: \$597,997) these financial statements have been prepared on a going concern basis which assumes continuity of normal business activities and the realisation of assets and the settlement of liabilities in the ordinary course of business for the foreseeable future.

The ability of the Group to continue as a going concern depends on one or more of the following:

- obtaining additional funding from capital raising activities;
- achieving sufficient future cash flows from operations to enable its obligations to be met;
- the success of cost saving initiatives, which include entering into Joint Venture arrangements and reducing tenement areas, so as to reduce the carrying and expenditure costs for tenements; and
- cash flows from the sale of any of the Group's assets.

The Directors acknowledge that to continue the exploration and development of the Group's exploration projects, the budgeted cash flows from operating and investing activities for the future will necessitate further capital raisings.

At the date of this Report and having considered the above factors, the Directors consider that the Group will be able to continue as a going concern and will be able to pay its debts as and when they fall due and payable.

The reliance on securing additional capital gives rise to the existence of a material uncertainty that may cast significant doubt on the Group's ability to continue as a going concern with the result that the Group may be required to realise its assets at amounts different from those currently recognised, settle liabilities other than in the ordinary course of business and make provisions for costs which may arise as a result of cessation or curtailment of normal business operations.

### 7. Segment Information

The Group operates solely within one segment, the mineral exploration industry in Australia.

### 8. Other Income

	2023	2022
	\$	\$
Interest	54	-
	<u>54</u>	<u>-</u>

## NOTES TO THE CONSOLIDATED FINANCIAL STATEMENTS FOR THE YEAR ENDED 30 JUNE 2023

### 9. Income Tax

	2023 \$	2022 \$
<b>(a) Numerical reconciliation of income tax expense / (benefit) to prima facie tax payable:</b>		
Profit (loss) from continuing operations before income tax expense	(889,011)	(597,287)
Tax at the Australian tax rate of 30%	(266,703)	(179,186)
Tax effect of permanent differences	21	-
Temporary differences not recognised	266,682	179,186
Income tax expense / (benefit)	-	-
<b>(b) Tax losses</b>		
Unused tax losses for which no deferred tax asset has been recognised	22,229,905	18,307,419
Potential tax benefit @ 30%	6,668,972	5,492,226
<b>(c) Franking credits</b>		
Franking credits available for use in subsequent financial year	251,146	251,146
<b>10. Cash and Cash Equivalents</b>		
Cash at bank and on hand	3,946,671	4,097,824
<b>11. Trade and Other Receivables</b>		
CURRENT		
Other receivables	270	30,653
Prepayments	97,961	46,388
	98,231	77,041



## NOTES TO THE CONSOLIDATED FINANCIAL STATEMENTS FOR THE YEAR ENDED 30 JUNE 2023

### 12. Financial Assets

	2023 \$	2022 \$
CURRENT		
Deep Yellow Limited <sup>1</sup>		
Investments in listed equity securities designated at fair value through other comprehensive income	42,300	33,336
<b>Total financial assets</b>	42,300	33,336

#### <sup>1</sup> Listed equity securities

The investment in listed equity securities are stated at fair value. AASB 13 *Fair Value Measurement* requires disclosure of fair value measurements by the level of the following fair value measurement hierarchy:

- 1) Level 1 – Quoted prices (unadjusted) in active markets for identical assets or liabilities.
- 2) Level 2 – Inputs other than quoted prices included within Level 1 that are observable for the asset or liability.
- 3) Level 3 – Inputs for the asset or liability that are not based on observable market data.

The listed equity securities are traded in an active market, being the Australian Securities Exchange, and consequently they are measured as a Level 1 instrument on the fair value hierarchy. The quoted market price, used to determine the value of these securities, is the bid price at balance date.

### 13. Plant and Equipment

	2023 \$	2022 \$
NON-CURRENT		
Equipment / software – at cost	97,850	97,850
Accumulated depreciation	(89,573)	(87,503)
	8,277	10,347
<b><i>Movement in Plant and Equipment</i></b>		
Opening net book amount	10,347	13,018
Additions	-	2,684
Depreciation charge	(2,070)	(5,355)
Closing net book amount	8,277	10,347

## NOTES TO THE CONSOLIDATED FINANCIAL STATEMENTS FOR THE YEAR ENDED 30 JUNE 2023

### 14. Exploration and Evaluation Assets

	2023 \$	2022 \$
<b>Exploration phase property costs</b>		
Deferred geological, geophysical, drilling and other expenditure – at cost		
Non-current	11,769,482	8,888,186
Total capitalised exploration expenditure	<u>11,769,482</u>	<u>8,888,186</u>
The capitalised exploration expenditure carried forward above has been determined as follows:		
Opening balance	8,888,186	6,065,340
Expenditure incurred during the year	2,885,137	2,822,846
Tenement expenditure written-off *	(3,841)	-
Closing balance	<u>11,769,482</u>	<u>8,888,186</u>

\* Tenement written off due to surrender of the tenement right.

### 15. Non-Current Assets – Other

Security deposits	<u>75,000</u>	<u>41,500</u>
-------------------	---------------	---------------

### 16. Payables

<b>Current liabilities</b>		
Trade payables and accrued expenses	142,282	158,295
Other payables – related party (i)	270,422	331,583
Trade and other payables	<u>412,704</u>	<u>489,878</u>
Other payables – ATO	9,037	23,585
Share application monies	536	1,674
Employee entitlements	181,472	146,239
<b>Total Payables</b>	<u>603,749</u>	<u>661,376</u>

(i) These amounts represent the unpaid Directors' remuneration that may be called within the next 12 months. The liability is unsecured, and no decision has been made by the Directors on the timing or nature of the consideration to be provided in settlement.

## NOTES TO THE CONSOLIDATED FINANCIAL STATEMENTS FOR THE YEAR ENDED 30 JUNE 2023

### 17. Contributed Equity

			2023 \$	2022 \$
		1,834,553,751 (2022: 1,701,220,418) ordinary shares fully paid	24,318,029	20,588,628
<b>(a) Movements in ordinary share capital</b>				
<i>Date</i>	<i>Details</i>	<i>Number of shares</i>	<i>Issue price</i> \$	\$
<b>30 June 2021</b>		<b>1,381,335,791</b>		<b>14,960,308</b>
16 September 2021	Options exercised	1,699,088	0.006	10,194
16 September 2021	Shares issued	119,818,096	0.0105	1,258,090
11 November 2021	Options exercised	35,224,166	0.006	211,345
8 December 2021	Options exercised	15,305,430	0.006	91,833
20 December 2021	Options exercised	23,492,602	0.006	140,956
14 January 2022	Options exercised	5,725,583	0.006	34,353
20 January 2022	Options exercised	143,054	0.006	858
8 February 2022	Options exercised	55,555	0.006	333
8 February 2022	Shares issued	118,421,053	0.038	4,500,000
	Share issue costs – options to lead manager			(213,892)
	Share issue costs			(405,750)
<b>30 June 2022</b>		<b>1,701,220,418</b>		<b>20,588,628</b>
31 May 2023	Shares issued	133,333,333	0.030	4,000,000
	Share issue costs			(270,599)
<b>30 June 2023</b>		<b>1,834,553,751</b>		<b>24,318,029</b>

### (b) Ordinary shares

Ordinary shares entitle the holder to participate in dividends and the proceeds on winding up of the Company in proportion to the number of and amounts paid on the shares held.

On a show of hands every holder of ordinary shares present at a meeting, in person or by proxy, is entitled to one vote and upon a poll, each share is entitled to one vote.

## NOTES TO THE CONSOLIDATED FINANCIAL STATEMENTS FOR THE YEAR ENDED 30 JUNE 2023

### 17. Contributed Equity (continued)

#### (c) Share options

<i>Date</i>	<i>Details</i>	<i>Number of options</i>	<i>Weighted Average Exercise Price \$</i>	<i>Expiry</i>
<b>At 30 June 2021</b>	<b>Balance</b>	<b>86,419,683</b>		
16 September 2021	Options exercised	(1,699,088)	0.006	31-Dec-21
11 November 2021	Options exercised	(35,224,166)	0.006	31-Dec-21
8 December 2021	Options exercised	(15,305,430)	0.006	31-Dec-21
20 December 2021	Options exercised	(23,492,602)	0.006	31-Dec-21
14 January 2022	Options exercised	(5,725,583)	0.006	31-Dec-21
20 January 2022	Options exercised	(143,054)	0.006	31-Dec-21
7 February 2022	Unlisted options issued	10,000,000 <sup>a</sup>	0.080	31-Aug-23
8 February 2022	Options exercised	(55,555)	0.006	31-Dec-21
14 April 2022	Options expired	(4,774,205)	0.006	31-Dec-21
<b>At 30 June 2022</b>	<b>Balance</b>	<b>10,000,000</b>		
31 May 2023	Listed options issued	76,666,667 <sup>b</sup>	0.060	30-Nov-24
<b>At 30 June 2023</b>	<b>Balance</b>	<b>86,666,667</b>		

<sup>a</sup> The lead manager to the share placement undertaken in February 2022 received 10 million options (during the year). The total value for the options granted is \$213,892. These options expired on 31 August 2023.

<sup>b</sup> Free attaching options issued as part of the 31 May 2023 share placement.

#### (d) Capital risk management

The Group's objectives when managing capital are to safeguard its ability to continue as a going concern, so that it can continue to provide returns for shareholders, benefits for other stakeholders and to maintain an optimal capital structure to reduce the cost of capital.

The capital structure of the Group includes cash and cash equivalents, equity attributable to equity holders comprising of contributed equity, reserves, and accumulated losses. To maintain or adjust the capital structure, the Group may issue new shares, sell assets or adjust the level of activities undertaken by the Group.

The Group monitors capital based on cash flow requirements for corporate overheads, exploration and evaluation expenditure. The Group's exposure to borrowings as at 30 June 2023 totals \$nil (2022: \$nil). The Group will continue to access capital markets and joint venture arrangements to satisfy anticipated funding requirements.

The Group's strategy to capital risk management is unchanged from prior years.



## NOTES TO THE CONSOLIDATED FINANCIAL STATEMENTS FOR THE YEAR ENDED 30 JUNE 2023

### 18. Reserves

	2023 \$	2022 \$
Financial assets revaluation reserve	(3,179,595)	(3,188,559)
Share-based payment reserve	272,412	272,412
<b>Total reserve</b>	<b>(2,907,183)</b>	<b>(2,916,147)</b>
At beginning of year	(2,916,147)	(3,123,316)
Revaluation increment / (decrement)	8,964	(6,723)
Share-based payments	-	213,892
<b>At end of year</b>	<b>(2,907,183)</b>	<b>(2,916,147)</b>

### 19. Key Management Personnel Disclosures

#### (a) Key management personnel compensation

	2023 \$	2022 \$
Short-term employee benefits	386,727	356,752
Post-employment benefits	32,064	27,450
	<b>418,791</b>	<b>384,202</b>

Detailed remuneration disclosures are provided in the remuneration report on pages 23 to 26.

At 30 June 2023, \$270,422 (2022: \$331,583) remains payable.

#### (b) Equity instrument disclosures relating to key management personnel

##### (i) Options provided as remuneration and shares issued on exercise of such options

There have been no options granted affecting remuneration in the current or a future reporting period.

##### (ii) Option holdings

There were no options over ordinary shares in the Company held during the financial year by any Director of the Company and other key management personnel of the Group, including their related parties.

##### (iii) Share holdings

The number of ordinary shares in the company held during the financial year by each Director of Superior Resources Limited and other key management personnel of the Group, including their personally related parties, is set out below.

2023	Balance at the start of the year	Received on exercising options	Net purchased / (sold)	Other changes	Balance at the end of the year
Name					
<b>Directors of Superior Resources Limited</b>					
P H Hwang	50,696,338	-	-	-	50,696,338
C A Fernicola	51,999,998	-	-	-	51,999,998
S J Pooley	-	-	-	-	-
<b>2022</b>					
Name	Balance at the start of the year	Received on exercising options	Net purchased / (sold)	Other changes	Balance at the end of the year
<b>Directors of Superior Resources Limited</b>					
P H Hwang	46,796,621	3,899,717	-	-	50,696,338
C A Fernicola	51,999,998	-	-	-	51,999,998
S J Pooley	-	-	-	-	-

## NOTES TO THE CONSOLIDATED FINANCIAL STATEMENTS FOR THE YEAR ENDED 30 JUNE 2023

### 20. Remuneration of Auditors

During the year, the following fees were paid or payable for services provided by the auditor, its related practices and non-related audit firms:

	2023 \$	2022 \$
<i>William Buck (Qld)</i>		
Review of financial report	5,500	5,000
Audit of financial report	16,500	15,000
	<u>22,000</u>	<u>20,000</u>

### 21. Contingencies

There are no contingent liabilities affecting the Group as at the date of this Report (2022: nil).

### 22. Commitments

#### (a) Exploration commitments

To maintain current rights to tenure of various exploration and mining tenements, the Group is required to outlay amounts in respect of tenement rent to the relevant governing authorities and to meet certain annual exploration expenditure commitments. These outlays (exploration expenditure and rent), which arise in relation to granted tenements are as follows:

	2023 \$	2022 \$
<b>Exploration expenditure commitments</b>		
Commitments for payments under exploration permits for minerals in existence at the reporting date but not recognised as liabilities payable is as follows:		
Payable within one year	3,244,894	1,739,603
Payable between one and five years	3,637,989	6,792,626
	<u>6,882,883</u>	<u>8,532,229</u>

Outlays expressed as "Exploration Expenditure Commitments" may be varied from time to time, subject to approval of the relevant government departments, and may be relieved if a tenement is relinquished or certain contractual arrangements are entered into with third parties (e.g. a farm-in or joint venture arrangement). Cash security bonds totalling \$75,000 (2022: \$41,500) are currently held by the relevant governing authorities to ensure compliance with granted tenement conditions.

## NOTES TO THE CONSOLIDATED FINANCIAL STATEMENTS FOR THE YEAR ENDED 30 JUNE 2023

### 23. Events Occurring After Balance Date

Apart from other matters already stated, no matters or circumstances have arisen since 30 June 2023 that have significantly affected, or may significantly affect:

- (a) the Group's operations in future financial years, or
- (b) the results of those operations in future financial years, or
- (c) the Group's state of affairs in future financial years.

### 24. Reconciliation of Loss After Income Tax to Net Cash Flows From Operating Activities

	2023 \$	2022 \$
Loss for the year after income tax	(889,011)	(597,287)
Depreciation and amortisation	2,070	5,355
Tenement expenditure written off	3,841	-
<i>Changes in operating assets and liabilities:</i>		
(Increase)/decrease in trade and other receivables	30,383	(15,255)
(Increase) / decrease in prepayments	(51,573)	(14,988)
Increase/(decrease) in other payables	(84,747)	(44,864)
Increase/(decrease) in employee entitlements	35,233	69,042
Net cash outflow from operating activities	(953,804)	(597,997)

## NOTES TO THE CONSOLIDATED FINANCIAL STATEMENTS FOR THE YEAR ENDED 30 JUNE 2023

### 25. Earnings (loss) Per Share

	2023 Cents	2022 Cents
<b>(a) Basic earnings (loss) per share</b>		
Profit (loss) per share attributable to the ordinary equity holders of the company	(0.05)	(0.04)
<b>(b) Diluted earnings (loss) per share</b>		
Profit (loss) per share attributable to the ordinary equity holders of the company	(0.05)	(0.04)
	2023 \$	2022 \$
<b>(c) Reconciliations of earnings (loss) used in calculating earnings per share</b>		
Basic earnings (loss) per share		
Profit (loss) attributable to ordinary equity holders of the company used in calculating basic earnings per share	(889,011)	(597,287)
Diluted earnings(loss) per share		
Profit (loss) attributable to ordinary equity holders of the company used in calculating diluted earnings per share	(889,011)	(597,287)
	2023 Number	2022 Number
<b>(d) Weighted average number of shares used as the denominator</b>		
Weighted average number of ordinary shares used as the denominator in calculating basic earnings (loss) per share	1,712,179,322	1,568,864,514
Adjustments for calculation of diluted earnings (loss) per share:		
Options	-	-
Weighted average number of ordinary shares and potential ordinary shares used as the denominator in calculating diluted earnings (loss) per share	1,712,179,322	1,568,864,514

Unissued ordinary shares under option are not included in the calculation of diluted earnings per share because they are antidilutive for the years ended 30 June 2023 and 30 June 2022. These shares under option could potentially dilute basic earnings per share in the future.

### 26. Related Party Disclosures

#### (a) Parent entity

The parent entity within the Group is Superior Resources Limited.



## NOTES TO THE CONSOLIDATED FINANCIAL STATEMENTS FOR THE YEAR ENDED 30 JUNE 2023

### 26. Related Party Disclosures (continued)

#### (b) Subsidiaries

The subsidiaries listed below have share capital consisting solely of ordinary shares which are held directly by the Group. The % ownership interests held equals the voting rights held by the Group.:

	Country of incorporation	Principal Place of Business	% ownership interest Held by the Group		Investment	
			2023	2022	2023 \$	2022 \$
<b>Subsidiaries</b>						
Superior Gold Pty Ltd	Australia	Australia	100	100	1,000	1,000

#### (c) Key management personnel

Disclosures relating to key management personnel are set out in Note 19.

### 27. Share-based payments

	2023 \$	2022 \$
<b>(a) Value of share-based payments in the financial statements</b>		
<i>Recognised as share issue costs:</i>		
Success fee for share placement – options	-	213,892
Recognised in statement of changes in equity	-	213,892

The Group provides benefits in the form of share-based payment transactions as follows:

Type	Holder(s)	Services provided
Options	Lead Managers	Success fee for share placement

#### (b) Accounting Policy: share-based payment transactions

Services are rendered in exchange for options and/or shares in the Company (equity-settled transactions).

The cost of equity-settled transactions is determined by the fair value at the date when the grant is made using an appropriate valuation model. That cost is recognised, together with a corresponding increase in other capital reserves in equity, over the period in which the performance and/or service conditions are fulfilled.

#### (c) Fair value of options

The fair value of the options granted is estimated as at the date of grant using the Black-Scholes valuation model taking into account the following inputs:

Grant date	7 February 2022
Vesting date	7 February 2022
Expiry date	31 August 2023
Number of options granted	10,000,000
Underlying price per share	\$0.042
Exercise price	\$0.080
Risk-free rate	0.64%
Volatility	143.96%
Dividend yield	0%
Option value	\$0.02138

## NOTES TO THE CONSOLIDATED FINANCIAL STATEMENTS FOR THE YEAR ENDED 30 JUNE 2023

### 27. Parent Entity Information

#### (a) *Summary financial information*

The individual financial statements for the parent entity show the following aggregate amounts:

	2023 \$	2022 \$
<b>Statement of financial position</b>		
Assets		
Current assets	4,072,662	4,193,096
Non-current assets	11,853,759	8,941,032
Total assets	<u>15,926,421</u>	<u>13,134,128</u>
Liabilities		
Current liabilities	579,839	638,795
Non-current liabilities	-	-
Total liabilities	<u>579,839</u>	<u>638,795</u>
Net assets	<u>15,346,582</u>	<u>12,495,333</u>
Shareholders' equity		
Issued capital	24,318,029	20,588,628
Reserves	(2,907,183)	(2,916,147)
Accumulated losses	<u>(6,064,264)</u>	<u>(5,177,148)</u>
	<u>15,346,582</u>	<u>12,495,333</u>
<b>Statement of profit or loss and other comprehensive income</b>		
Loss for the year	(887,116)	(596,872)
Other comprehensive income/(loss) net of tax	8,964	(6,723)
Total comprehensive income/(loss) for the year	<u>(878,152)</u>	<u>(603,595)</u>

#### (b) *Contingent liabilities and commitments of the parent entity*

The parent entity did not have any contingent liabilities as at 30 June 2023 or 30 June 2022.

The commitments of the parent entity are as disclosed at Note 22 for the Group.

## DIRECTORS' DECLARATION

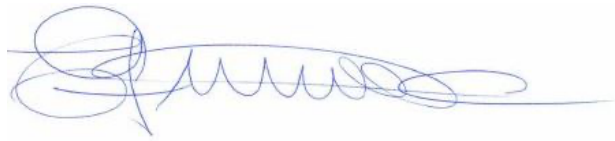
In the Directors' opinion:

1. the financial statements and notes set out on pages 30 to 57, are in accordance with the Corporations Act 2001, including:
  - (a) complying with Accounting Standards, the Corporations Regulations 2001 and other mandatory professional reporting requirements, and
  - (b) giving a true and fair view of the Group's financial position as at 30 June 2023 and of its performance for the financial year ended on that date, and
2. having regard to note 6 to the financial statements, there are reasonable grounds to believe that the Group will be able to pay its debts as and when they become due and payable.

Note 2(a) confirms that the financial statements also comply with International Financial Reporting Standards as issued by the International Accounting Standards Board.

The Directors have been given the declarations by the chief executive officer/chief financial officer as required by section 295A of the Corporations Act 2001.

This declaration is made in accordance with a resolution of the Directors.

A handwritten signature in blue ink, appearing to read 'CA Fernicola', with a long horizontal flourish extending to the right.

CA Fernicola  
Chairman

Brisbane, 26th September 2023



#### Superior Resources Limited

Independent auditor's report to the members

#### Report on the Audit of the Financial Report

##### Opinion

We have audited the financial report of Superior Resources Limited (the Company and its subsidiaries (the **Group**)), which comprises the consolidated statement of financial position as at 30 June 2023, the consolidated statement of profit or loss, consolidated statement of other comprehensive income, the consolidated statement of changes in equity and the consolidated statement of cash flows for the year then ended, and notes to the financial statements, including a summary of significant accounting policies and other explanatory information, and the Directors' declaration.

In our opinion, the accompanying financial report of the Group, is in accordance with the Corporations Act 2001, including:

- (i) giving a true and fair view of the Group's financial position as at 30 June 2023 and of its financial performance for the year ended on that date; and
- (ii) complying with Australian Accounting Standards and the Corporations Regulations 2001.

##### Basis for Opinion

We conducted our audit in accordance with Australian Auditing Standards. Our responsibilities under those standards are further described in the Auditor's Responsibilities for the Audit of the Financial Report section of our report. We are independent of the Group in accordance with the auditor independence requirements of the Corporations Act 2001 and the ethical requirements of the Accounting Professional and Ethical Standards Board's APES 110 Code of Ethics for Professional Accountants (*including Independence Standards*) (the **Code**) that are relevant to our audit of the financial report in Australia. We have also fulfilled our other ethical responsibilities in accordance with the Code.

We believe that the audit evidence we have obtained is sufficient and appropriate to provide a basis for our opinion.

##### Material Uncertainty Related to Going Concern

We draw attention to Note 6 in the financial report, which indicates that the Group incurred a net loss after tax of \$889,011 during the year ended 30 June 2023 and had net cash outflows from operations of \$953,804. As stated in Note 6, these events or conditions, along with other matters as set forth in Note 6, indicate that a material uncertainty exists that may cast significant doubt on the Group's ability to continue as a going concern. Our opinion is not modified in respect of this matter.

## Key Audit Matters

Key audit matters are those matters that, in our professional judgement, were of most significance in our audit of the financial report of the current period. These matters were addressed in the context of our audit of the financial report as a whole, and in forming our opinion thereon, and we do not provide a separate opinion on these matters. In addition to the matter described in the *Material Uncertainty Related to Going Concern* section, we have determined the matter described below to be the key audit matter to be communicated in our report.

CARRYING VALUE OF EXPLORATION COSTS	
Area of focus	How our audit addressed it
Refer also to note 14	
<p>Capitalised exploration and evaluation assets represent 74% of the Group's total assets. The carrying value of exploration and evaluation assets is impacted by the Group's ability, and intention, to continue to explore and evaluate these assets. The results of these activities then determine the extent to which it may or may not be commercially viable to develop and extract identified reserves.</p> <p>Judgement is required in evaluating management's application of the requirements of AASB 6 <i>Exploration for and Evaluation of Mineral Resources</i> ("AASB 6"). AASB 6 is an industry specific accounting standard requiring the application of significant judgements, estimates and industry knowledge. This includes specific requirements for expenditure to be capitalised as an asset and subsequent requirements which must be complied with for capitalised expenditure to continue to be carried as an asset.</p> <p>Due to the significance of this asset and the subjectivity involved in determining its carrying value and recoverable amount, this is a key audit matter.</p>	<p>Our audit procedures included:</p> <ul style="list-style-type: none"> <li>— A review of the Directors' assessment of the criteria for the continuous capitalisation of exploration and evaluation expenditure and their assessment of whether there are any indicators of impairment to capitalised costs;</li> <li>— Test of additions to capitalised expenditure for the year by agreeing a sample of recorded expenditure for consistency to underlying records, capitalisation requirements of the Group's accounting policy and the requirements of AASB 6;</li> <li>— Considering the Group's intention and ability to continue activities necessary to support a decision to develop the exploration and evaluation assets, which included an assessment of the Group's ability to fund such activities and a review of their future budgets;</li> <li>— Performing an assessment of whether any indicators of impairment existed in line with requirements of Australian Accounting Standards, including a review of the integrity of tenement title status and total commitments value; and</li> <li>— Assessing the adequacy of the Group's disclosures in respect of the carrying value of exploration costs.</li> </ul>





### **Other Information**

The Directors are responsible for the other information. The other information comprises the information in the Group's annual report for the year ended 30 June 2023, but does not include the financial report and the auditor's report thereon.

Our opinion on the financial report does not cover the other information and we do not express any form of assurance conclusion thereon.

In connection with our audit of the financial report, our responsibility is to read the other information and, in doing so, consider whether the other information is materially inconsistent with the financial report or our knowledge obtained in the audit or otherwise appears to be materially misstated.

If, based on the work we have performed, we conclude that there is a material misstatement of this other information, we are required to report that fact. We have nothing to report in this regard.

### **Responsibilities of the Directors for the Financial Report**

The Directors of the Company are responsible for the preparation of the financial report that gives a true and fair view in accordance with Australian Accounting Standards and the *Corporations Act 2001* and for such internal control as the Directors determine is necessary to enable the preparation of the financial report that gives a true and fair view and is free from material misstatement, whether due to fraud or error.

In preparing the financial report, the Directors are responsible for assessing the ability of the Group to continue as a going concern, disclosing, as applicable, matters related to going concern and using the going concern basis of accounting unless the Directors either intend to liquidate the Group or to cease operations, or have no realistic alternative but to do so.

### **Auditor's Responsibilities for the Audit of the Financial Report**

Our objectives are to obtain reasonable assurance about whether the financial report as a whole is free from material misstatement, whether due to fraud or error, and to issue an auditor's report that includes our opinion. Reasonable assurance is a high level of assurance, but is not a guarantee that an audit conducted in accordance with the Australian Auditing Standards will always detect a material misstatement when it exists. Misstatements can arise from fraud or error and are considered material if, individually or in the aggregate, they could reasonably be expected to influence the economic decisions of users taken on the basis of this financial report.

A further description of our responsibilities for the audit of these financial statements is located at the Auditing and Assurance Standards Board website at:

[https://www.auasb.gov.au/admin/file/content102/c3/ar1\\_2020.pdf](https://www.auasb.gov.au/admin/file/content102/c3/ar1_2020.pdf)

This description forms part of our independent auditor's report.



#### Report on the Remuneration Report

##### Opinion on the Remuneration Report

We have audited the Remuneration Report included in the Directors' Report for the year ended 30 June 2023.

In our opinion, the Remuneration Report of Superior Resources Limited, for the year ended 30 June 2023, complies with section 300A of the Corporations Act 2001.

##### Responsibilities

The Directors of the Company are responsible for the preparation and presentation of the Remuneration Report in accordance with section 300A of the Corporations Act 2001. Our responsibility is to express an opinion on the Remuneration Report, based on our audit conducted in accordance with Australian Auditing Standards.

A handwritten signature in black ink that reads "William Buck".

**William Buck (Qld)**  
ABN 21 559 713 106

A handwritten signature in black ink, appearing to be "J A Latif", with a horizontal line underneath.

**J A Latif**  
Director

Brisbane, 26 September 2023

## Shareholder Information

The information set out below was applicable at 30 October 2023.

### A. DISTRIBUTION OF EQUITY SECURITIES

Analysis of numbers of equity security holders by size of holding:

Class of security - Ordinary Shares	Number of Holders
Range	
1 – 1,000	73
1,001 – 5,000	24
5,001 – 10,000	177
10,001 – 100,000	1,196
100,001 and over	1,251
<b>Total</b>	<b>2,721</b>

The number of holders holding less than a marketable parcel of ordinary shares was 545 and they held 6,124,593 securities.

### B. EQUITY SECURITY HOLDERS

Total of Ordinary Shares on Issue 1,834,553,751.

**Twenty largest equity security holders**

Holders of fully paid ordinary shares (ASX:SPQ):

Holder	Ordinary Shares	
	Number	Percent
YARRAANDOO PTY LTD	160,000,000	8.72
MR TERRY TAYLOR & MRS LYNDA LOUISE TAYLOR	42,000,000	2.29
HBH FAMILY PTY LTD	41,949,072	2.29
KJ HARVEY & ASSOCIATES PTY LTD	37,542,724	2.05
CHOICE CONSTRUCTIONS PTY LTD	35,471,436	1.93
AIHANMI PTY LTD	31,600,000	1.72
MR MARTIN JOHN ERIC HOLTMAN	27,636,058	1.51
MALACHITE AILURIDAE PTY LTD	25,699,943	1.40
MR JOHN JOSEPH SCHOLL & MRS PATRICIA JOY SCHOLL	20,009,556	1.09
MR JAMES WILLIAM SWATMAN & MRS DEIRDRE CUTTLE	20,000,000	1.09
MR CARLOS ALBERTO FERNICOLA & MRS KERRIE ALISON FERNICOLA	19,101,666	1.04
NETWEALTH INVESTMENTS LIMITED	18,159,737	0.99
MR JOHN JOSEPH SCHOLL & MRS PATRICIA JOY SCHOLL	17,098,610	0.93
CITICORP NOMINEES PTY LIMITED	16,049,489	0.87
DR MATHEW FARRUGIA	16,000,604	0.87
HAMILTON HAWKES PTY LTD	15,960,850	0.87
ADESTE PTY LTD	15,743,401	0.86
TERRA SEARCH PTY LTD	14,999,766	0.82
CAPITAL FINANCIAL ADVISERS PTY LTD	14,604,585	0.80
D & B PERKS PTY LTD ATF PERKS FAMILY SUPERANNUATION FUND	13,000,000	0.71
<b>Total</b>	<b>602,627,497</b>	<b>32.85</b>

### Unquoted equity securities

Unquoted Options	Number on issue	Number of Holders
------------------	-----------------	-------------------

There are no unlisted options on issue

Holders of greater than 20% of the unlisted equity securities

There are no holders of the unlisted equity securities of Superior Resources Limited at the date of this report.

### C. SUBSTANTIAL HOLDERS

Substantial holders of the Company's ordinary securities are set out below.

Holder of Relevant Interest	Registered Holder	Ordinary Shares	
		Number	Percent
MR GEOFFREY JAMES HARRIS	YARRAANDOO PTY LTD	160,000,000	8.72

### D. VOTING RIGHTS

The voting rights attaching to each class of equity securities are set out below:

#### a. Ordinary shares

On a show of hands each member present at a meeting in person or by proxy shall have one vote and on a poll each share shall have one vote.

#### b. Options

No voting rights.



## Tenement Schedule

Current interests in tenements held by the Company and its subsidiaries as of 5 October 2023 are set out below.

All tenements are located within Queensland. Exploration Permits for Minerals (EPM) are specified for all minerals other than coal.

Tenement	Name	Project	Date of Grant	Date of Expiry	Area	Holder	SPQ Interest
<b>Northwest Queensland</b>							
EPM15670	Hedleys 2	Nicholson	21 Aug 06	20 Aug 26	186 km <sup>2</sup>	SPQ	100%
EPM18203	Hedleys South	Nicholson	29 May 14	28 May 24	114 km <sup>2</sup>	SPQ	100%
EPM19097	Tots Creek	Victor	27 Nov 14	26 Nov 24	108 km <sup>2</sup>	SPQ	100%
EPM19214	Scrubby Creek	Victor	27 Nov 14	26 Nov 24	90 km <sup>2</sup>	SPQ	100%
EPM26720	Victor Extended	Victor	30 Aug 18	29 Aug 23*	60 km <sup>2</sup>	SPQ	100%
<b>Northeast Queensland</b>							
EPM18987	Cockie Creek	Greenvale	25 Sep 13	24 Sep 23*	153 km <sup>2</sup>	SPQ	100%
EPM19247	Cassidy Creek	Greenvale	28 May 13	27 May 23*	48 km <sup>2</sup>	SPQ	100%
EPM25659	Dinner Creek	Greenvale	21 Apr 15	20 Apr 25	192 km <sup>2</sup>	SPQ	100%
EPM25691	Wyandotte	Greenvale	7 Apr 15	6 Apr 25	90 km <sup>2</sup>	SPQ	100%
EPM26165	Cockie South	Greenvale	30 Jan 17	29 Jan 27	108 km <sup>2</sup>	SPQ	100%
EPM26751	Twelve Mile Creek	Greenvale	28 May 19	27 May 24	258 km <sup>2</sup>	SPQ	100%
EPM27754	Dido	Greenvale	12 Aug 21	11 Aug 26	300 km <sup>2</sup>	SPQ	100%
EPM27755	Arthur Range	Greenvale	12 Aug 21	11 Aug 26	300 km <sup>2</sup>	SPQ	100%
EPM27932	Phantom Creek	Greenvale	7 Mar 22	6 Mar 27	300 km <sup>2</sup>	SPQ	100%
EPM28630	Six Mile Creek	Greenvale	Application		300 km <sup>2</sup>	SPQ	100%
EPM28632	Lyndhurst	Greenvale	Application		300 km <sup>2</sup>	SPQ	100%
EPM28633	Middle Creek	Greenvale	Application		300 km <sup>2</sup>	SPQ	100%

Note \*: permit renewal application lodged.

### Abbreviations:

SPQ Superior Resources Limited  
EPM Exploration Permit for Minerals

## Mineral Resources Statement

### Mineral Resources as at 30 June 2023

Project	Resource category	Cut-off grade (g/t Au)	Quantity (tonnes)	Average Grade (g/t Au)	Au (ounces)	Notes
Steam Engine Gold Deposit	Measured	0.25	800,000	2.1	53,000	1, 2
	Indicated	0.25	1,420,000	1.5	68,000	1, 2
	Inferred	0.25	1,960,000	1.2	75,000	1, 2
	<b>Total</b>	<b>0.25</b>	<b>4,180,000</b>	<b>1.5</b>	<b>196,000</b>	<b>1, 2</b>

#### Notes:

1. Steam Engine Gold Deposit lies 500 metres south of the Gregory Development Road within EPM26165 "Cockie South", approximately 210km west northwest of Townsville, Queensland, Australia.
2. Competent person – Mineral Resources, Mr Kevin Richter (MAusIMM); refer ASX announcement dated 11 April 2022.

### Steam Engine Prospect

Information in relation to the Steam Engine Gold Deposit Mineral Resource Estimate and related information were originally reported on the ASX Market Announcements Platform on 22 March 2021 ("*Steam Engine revised Mineral Resource Estimate: JORC Measured and Indicated Resource upgraded by 31%*") and 11 April 2022 ("*Material upgrade in Steam Engine Resource to 196,000 oz Au with 80.6% increase to Measured and Indicated categories*") each of which, complies with the guidelines of the 2012 JORC Code.

### Mineral Resources comparison 2021 to 2022

Project	Resource category	2022				2021			
		Cut-off grade (g/t Au)	Quantity (tonnes)	Average grade (g/t Au)	Au (ounces)	Cut-off grade (g/t Au)	Quantity (tonnes)	Average grade (g/t Au)	Au (ounces)
Steam Engine Gold Deposit	Measured	0.25	800,000	2.1	53,000	0.5	240,000	2.6	20,000
	Indicated	0.25	1,420,000	1.5	68,000	0.5	610,000	2.4	47,000
	Inferred	0.25	1,960,000	1.2	75,000	0.5	880,000	1.9	55,000
	<b>Total</b>	<b>0.25</b>	<b>4,180,000</b>	<b>1.5</b>	<b>196,000</b>	<b>0.5</b>	<b>1,730,000</b>	<b>2.2</b>	<b>122,000</b>

The revised Steam Engine Mineral Resource Estimate, as stated in this report and as published on 11 April 2022, is calculated using a cut-off of 0.25 g/t Au, compared with a cut-off grade of 0.5 g/t Au that was used in the 2021 Mineral Resource Estimate. A lower cut-off grade was for the 2023 Mineral Resource Estimate to enable feasibility studies to be carried out on the basis of a mining and processing operation.

### **Mineral Resource and Ore Reserve Governance**

The Mineral Resource Estimates as reported, have been generated by a suitably qualified person using industry standard best practice modelling and estimation methods.

Unless stated otherwise, Mineral Resources and Ore Reserves are compiled in accordance with the Australasian Code for Reporting of Exploration Results, Mineral Resources and Ore Reserves (JORC Code) 2012 Edition.

The Mineral Resources Statement included in this report has been reviewed by a suitably qualified Competent Person.

### **Reporting of Exploration Results**

The reporting of Exploration Results, Mineral Resources or Exploration Targets in this report reflects information that was originally reported in ASX market announcements as referenced in various parts of this report. The Company confirms that it is not aware of any new information or data that materially affects the information, results or conclusions contained in the original reported document.

In respect of previously reported Mineral Resource estimates, all originally reported material assumptions and technical parameters underpinning the estimates continue to apply and have not been materially changed or qualified. The form and context in which the relevant Competent Person's findings are presented have not been materially modified from the original document.





**SUPERIOR RESOURCES LIMITED**  
ABN 72 112 844 407

**Registered Office**  
Unit 8, 61 Holdsworth Street  
COORPAROO QLD 4151

**Principal Office**  
Suite 3, Level 1, 5 Gardner Close,  
Milton Qld 4064

T: 07 3847 2887  
E: [manager@superiorresources.com.au](mailto:manager@superiorresources.com.au)

[superiorresources.com.au](http://superiorresources.com.au)