



## Notice Required Under ASX Listing Rule 3.13.1

---

Legacy Minerals Holdings Limited (**ASX: LGM, Legacy Minerals, or the Company**) advises that the 2023 Annual General Meeting of shareholders is scheduled to be held on Tuesday 28 November 2023, at 10.00AM (AEDT).

Accordingly, for the purposes of ASX Listing Rule 3.13.1, the Company advises that the closing date for director nominations is Thursday 28 September 2023 <sup>1</sup>.

*This market announcement has been authorised for release to the market by the Board of Legacy Minerals Holdings Limited.*

### For more information:

Chris Byrne  
CEO & Managing Director  
[chris.byrne@legacyminerals.com.au](mailto:chris.byrne@legacyminerals.com.au)  
**+61 (0) 499 527 547**

---

---

<sup>1</sup> At least 2 months before the meeting.

## About Legacy Minerals

Legacy Minerals is an ASX listed public company that has been involved in the acquisition and exploration of gold, copper, and base-metal projects in the Lachlan Fold Belt since 2017. The Company has six projects that present significant discovery opportunities for shareholders.

<p><b>Au-Cu (Pb-Zn) Cobar</b> (EL9511)</p> <p>Undrilled targets next door to the Peak Gold Mines. Several priority geophysical anomalies and gold in lag up to <b>1.55g/t Au</b>.</p>	<p><b>Au Harden</b> (EL8809, EL9257)</p> <p>Large historical high-grade quartz-vein gold mineralisation. Drilling includes <b>3.6m at 21.7g/t Au</b> 116m and <b>2m at 17.17g/t Au</b> from 111m.</p>
<p><b>Au-Ag Bauloora</b> (EL8994, EL9464) <b>Newmont JV</b></p> <p>One of NSW's largest low-sulphidation epithermal systems with a 27km<sup>2</sup> epithermal vein field and 15km<sup>2</sup> gold zone.</p>	<p><b>Au-Cu Fontenoy</b> (EL8995) <b>Earth AI-Alliance</b></p> <p>An 8km long zone of Au and Cu anomalism defined in soil sampling and drilling. Significant drill intercepts include <b>79m at 0.27% Cu</b> from 1.5m.</p>
<p><b>Cu-Au Rockley</b> (EL8296)</p> <p>Prospective for porphyry Cu-Au and situated in the Macquarie Arc Ordovician host rocks with historic high-grade copper mines that graded up to <b>23% Cu</b>.</p>	<p><b>Au-Ag Black Range</b> (EL9466, ELA6613)</p> <p>Extensive low-sulphidation epithermal system with limited historical exploration. Epithermal preservation across 7km<sup>2</sup> of intense silicification</p>
<p><b>Cu-Au Drake</b> (EL6273, ELA6640)</p> <p>Large collapsed caldera (~150km<sup>2</sup>) and associated epithermal mineralisation bears similar geological characteristics to other major pacific rim settings and deposits.</p>	

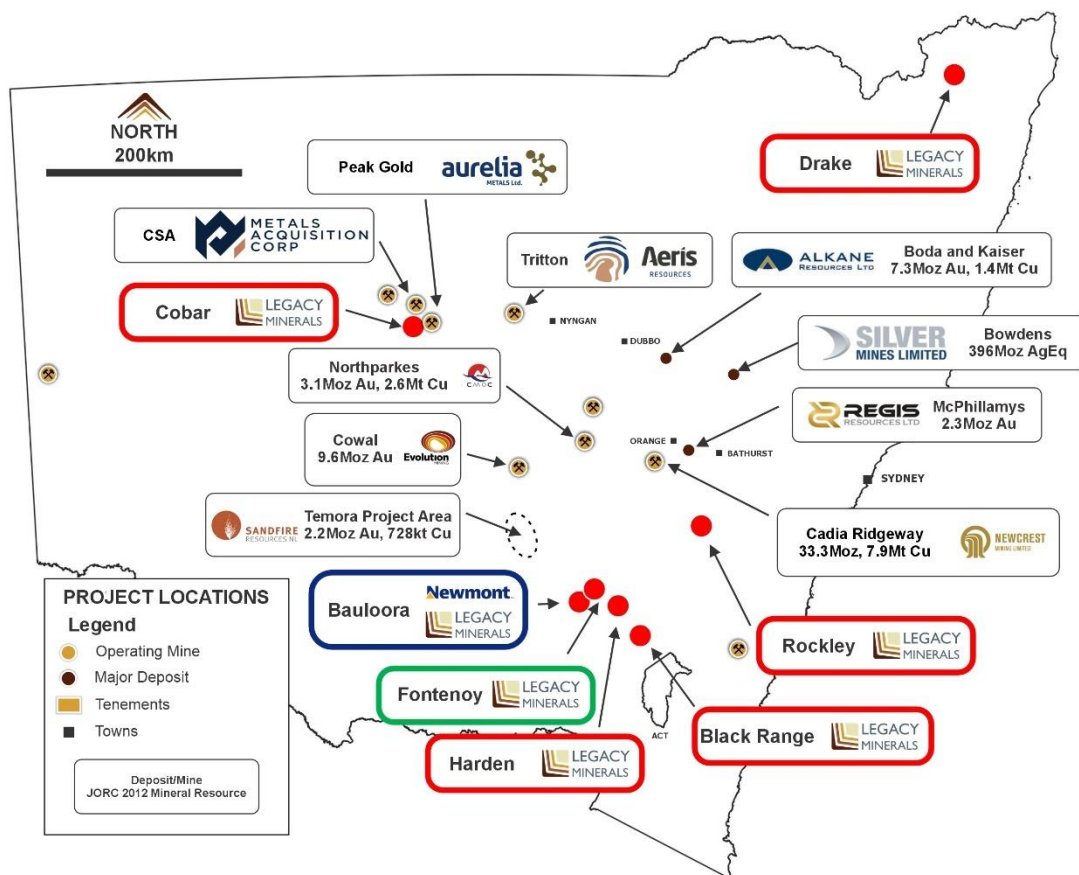


Figure 1. Regional setting of Legacy Minerals Projects<sup>i,ii,iii,iv,v</sup>

## Endnotes

---

<sup>i</sup> CMOC Northparkes Mining and Technical Information, <http://www.northparkes.com/wp-content/uploads/2022/05/northparkes-mining-and-technical-information.pdf>

<sup>ii</sup> Alkane Resources Kaiser Resource Estimate of ~4.7M Gold Equivalent 27 February 2023

<sup>iii</sup> Newcrest Mining Annual Mineral Resources and Ore Reserves Statement 17 February 2022

<sup>iv</sup> Regis Resources Annual Mineral Resource and Ore Reserve Statement 8 June 2022

<sup>v</sup> Evolution Mining 2022 Annual Report

**Table 1: Major Mineral Resources of NSW**

Project & Company	Mineral Resource	Measured Resource	Indicated Resource	Inferred Resource
Boda-Kaiser, NSW (Alkane Resources Ltd)	7.26Moz Au, 1.38Mt Cu	-	-	7.26Moz Au, 1.38Mt Cu
Tomingley, NSW (Alkane Resources Ltd)	1.75Moz Au	0.13M Au	1.019Moz Au	0.59Moz
McPhillamys, NSW (Regis Resources Ltd)	2.29Moz Au		2.28Moz Au	0.001Moz Au
Cadia-Ridegway, NSW (Newcrest Mining Ltd)	33.31Moz Au, 7.9Mt Cu	0.31Moz Au, 0.041Mt Cu	33Moz Au, 7.3Mt Cu	0.75Moz, 1.1Mt Cu
Cowal, NSW (Evolution Mining Limited)	9.618Moz Au	0.367Moz Au	7.33Moz Au	1.92Moz Au
Nth Parkes, NSW (CMOC Mining Pty Ltd)	3.09Moz Au, 2.63Mt Cu	1.64Moz Au, 1.2Mt Cu	1.1Moz Au, 1.1Mt Cu	0.35Moz Au, 0.33Mt Cu