

# Investor Presentation

## *Palmerville Cu-Au focus*

### *January 2023*

*Multiple Opportunities for Copper and  
Gold Discoveries in WA and QLD*

ASX:NMR

# Corporate and Management Snapshot



**Blake Cannavo**  
Managing Director & CEO



**James Walker**  
Independent Non-Exec  
Chair



**Philip Gardner**  
Independent Non-Exec  
Director



**Marika White**  
Company Secretary



**Hasaka Martin**  
Company Secretary



**Dr. Simon Richards**  
Chief Geologist



**Andrew Chung**  
Project Services  
Manager



**Chris Jacobs**  
Chief Financial Officer

**NMR**  
ASX Code

**\$0.1**  
\*Share Price

**115.65m**  
\*Shares on Issue

**\$11.21m**  
\*Market Cap



# Investor highlights

**Metals-focused** - NMR is Copper and Gold focused in 2023. NMR will emphasize progressing its key prospects in Palmerville, particularly Leanne's and the St George-Fairlight historical Copper mines

**Early investor opportunity** - Multiple near-term opportunities for discovery driven by strong drilling and exploration pipeline planned over coming months

**Results-motivated management team** - Solid capital structure combined with highly experienced and motivated management team

**Focus on quickly advancing priority targets** – Updated plans to grow targets following the results from geophysics surveys at Palmerville and Maneater. A sharper focus with new datasets and geological insight

# World Class Asset Portfolio

## Focus on key commodities Copper and Gold in both proven and new deposit-hosting terrains

**Narrow vein gold** with samples returning 147g/t Au from the main vein and >15g/t from an ~15kg composite samples from second target vein

Eastern Goldfields  
(Music Well, Au)

Eastern Goldfields  
(Mt Vettors and Arcoona  
Au, REE, PGE)

Nullarbor  
(Madura Province Ni, CU, Co  
PGE, IOCG)

Palmerville  
(Cu, Au)

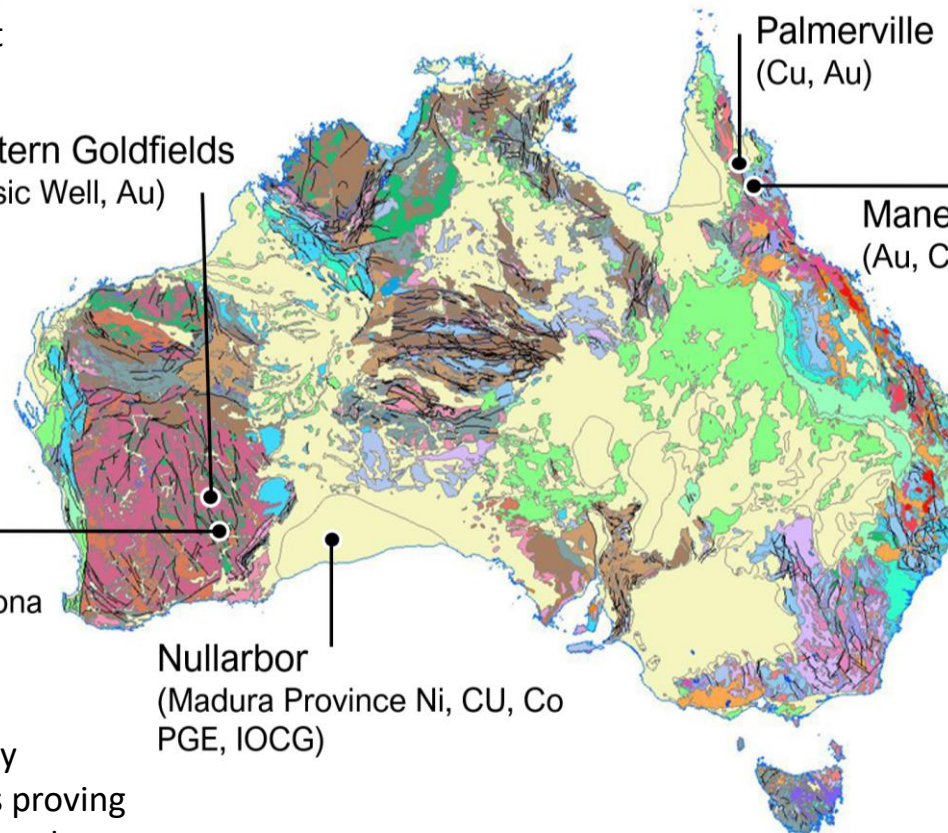
Maneater Breccia  
(Au, Cu, Base metals)

Four high-priority **Cu targets** all with rock chip samples over 10% Cu and up to 31% Cu  
Leanne's initial drilling revealing 33m @ 0.4\* % Cu  
Fairlight-St George historical mining of 5t at 24% Cu ore at the mine\*.

Disseminated, massive and semi-massive sulfides identified in **polymetallic breccia**.

Intercept in MPD003 of 446m @ 5.5g/t Ag = 2453 m-g.  
Zinc up to 1m @ 2.8%  
Ag up to 1m @ 59.4 g/t  
Au up to 1m @ 2.14 g/t  
Sb up to 1m @ 0.5%

**IOCG**-style alteration already identified in TWO drill holes proving extensive alteration system and potential IOCG deposit.





# North Queensland Snapshot

**“NMR are unlocking and advancing an increasing number of copper and gold projects in northern QLD”**

## **Truly strategic and diversified portfolio of Critical Commodities**

→ NMR are developing proven copper, gold, antimony, silver, lead and zinc projects.

## **Leaders amongst giants**

→ One of the largest continuous tenement packages in NE Queensland allowing exploration of almost the entire northern Chillagoe formation

## **Balanced risk profile**

→ Well-developed project portfolio ranging from early drill targets with major uplift potential through to high-grade soil and/or rock chip anomalies on over 50 targets.

## **Explore using smart technologies and smart geology**

→ Combine sound geological knowledge with new datasets and new technologies to better rank targets and increase exploration success.

## **Forward thinking**

→ NMR continually adding value to targets by creating previously unrecognised opportunities for discovery

## **Focus for CY Q1-2**

**Palmerville Cu-Au Project**  
**Maneater Peak**

## **Commodities**

**Copper, Gold, Antimony, Silver,  
Lead and Zinc**

## **Historical mining**

**Fairlight copper mines (24% Cu  
Ore)**

**Glenroy copper mines**

**Pinnacle Hill - alluvial mining for  
copper and gold**

**Maneater Peak polymetallic  
breccia – historical shafts**

## **Exploration**

**\$200,000 CEI grant to fly >30,000  
line kilometres of magnetic data.**  
**Geophysics and Drilling at  
Maneater**



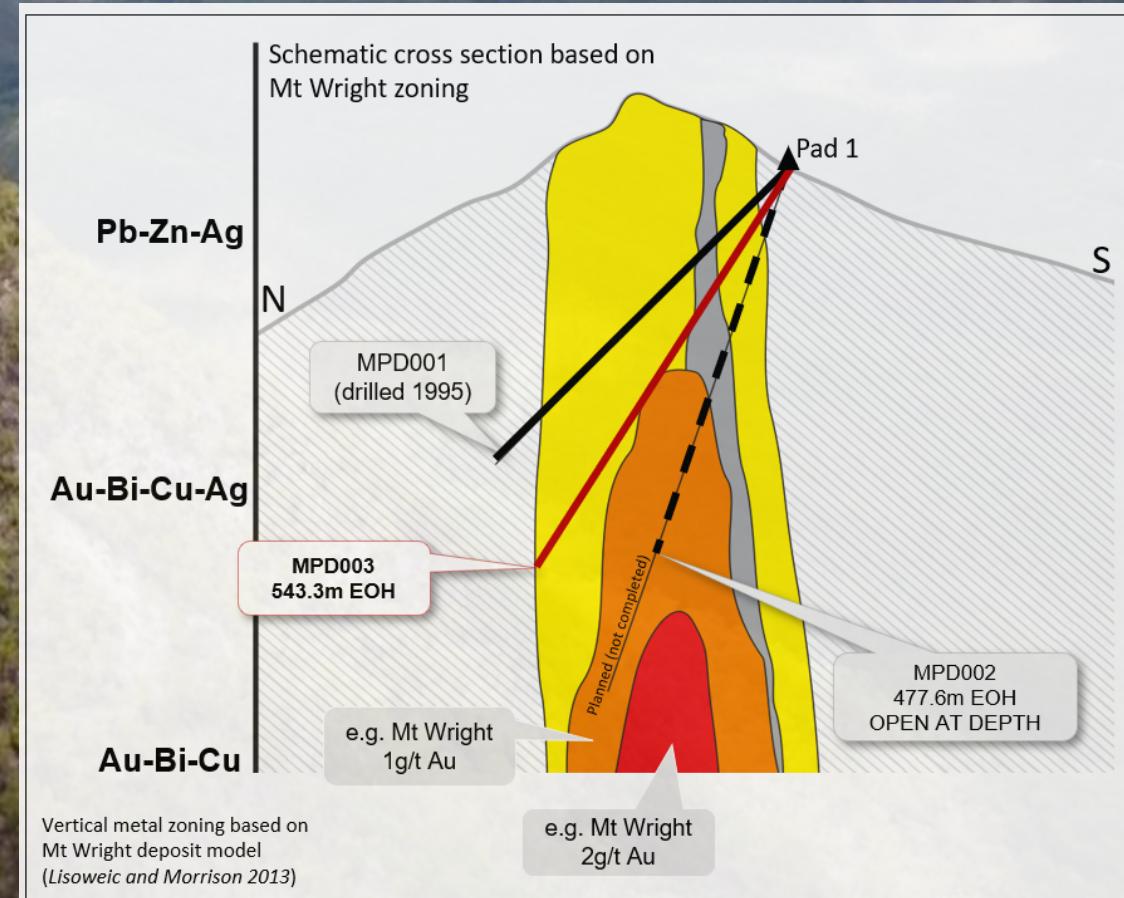
# Maneater Polymetallic Breccia, North Queensland



Diamond drilling in breccia revealed polymetallic sulfides in both holes from approximately 100m to EOH.

446m @ 5.5 g/t Ag,  
1m @ 2.14 g/t Au and  
1m @ 2.28% Zn.

\* All results from drilling continue to support the interpretation of increased gold and base metal potential at depth



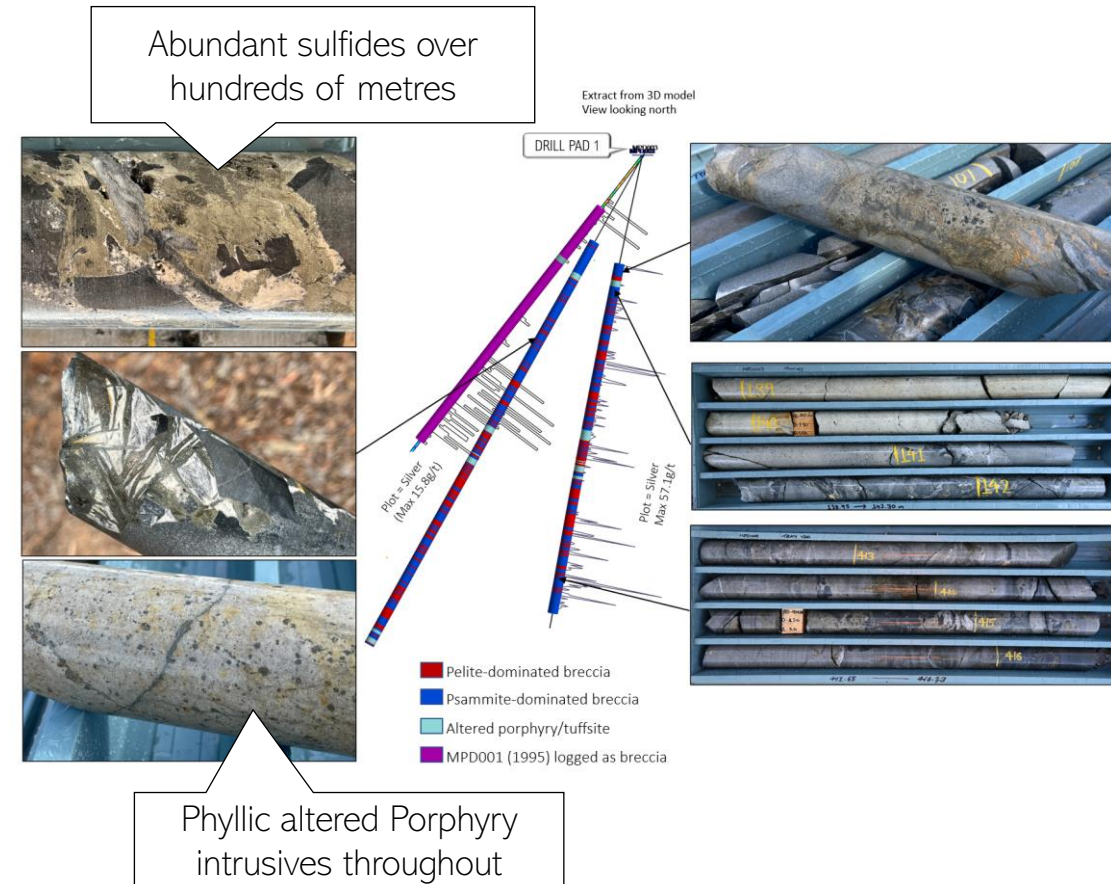


# Maneater Polymetallic Breccia, QLD



Very positive results already obtained from initial diamond drilling:

- ✓ Predicted - Increasing metal abundance with depth
- ✓ Predicted - Increasing gold with depth. MPD003 reached max gold assay of 1m @ 2.14g/t Au, well above previous shallow drilling.
- >440m of massive, semi-massive and disseminated sulfides intersected in MPD003.
- A composite of all results SUPPORTS the proposed “metal zoning” model for Maneater with anticipated **gold at depth**.
- **Increasing copper** (chalcopyrite) with increasing depth.
- Current drilling MPD003 intersected an impressive **446m @ 5.5g/t Ag**
- Intrusive **porphyry** (heavily altered) present in all drill holes indicating porphyry at depth.
- Carbonate (wollastonite) and phyllic alteration observed at surface along with vugs and other features of shallow level brecciation.
- Surrounding area exhibit **newly identified historical shafts**.
- Historical rock chips samples point towards large mineral system e.g. sample Q26178 Au 1.07g/t and 1.21g/t (r), Ag 640 ppm, Cu 175 ppm, Pb 7.4%, Zn 1800 ppm, Mo 3.5ppm, Bi 3.7ppm, Sb 2.31%,



\* Both holes considered to be open at depth

# Maneater Breccia Project QLD

## A world-ranking target – MPD003



Drill hole MPD003 – a globally significant intercept! The Silver (Ag) intercept of over 446m @ 5.5g/t Ag in MPD003 ranked #6 among ASX- and TSX-listed companies based on the chart published by “MinerDeck”. The result is significant as the Maneater Peak is not in a well-developed mine or advance project like other intercepts. Maneater is a new greenfields discovery.



446m at 5.5g/t Ag from 99m = 2453 g-m  
This places Maneater at #6, above Minsud Resources (Argentina)

Other positive intercepts in MPD003

- 1m sample intervals recording grades up to 2.8% Zn, 0.19% Sb, 59.4g/t Ag, 0.72% Pb
- 54m (54 one-metre samples from 239-292m) at 12.2 g/t Ag and 0.33% Zn



# Maneater Breccia Project QLD

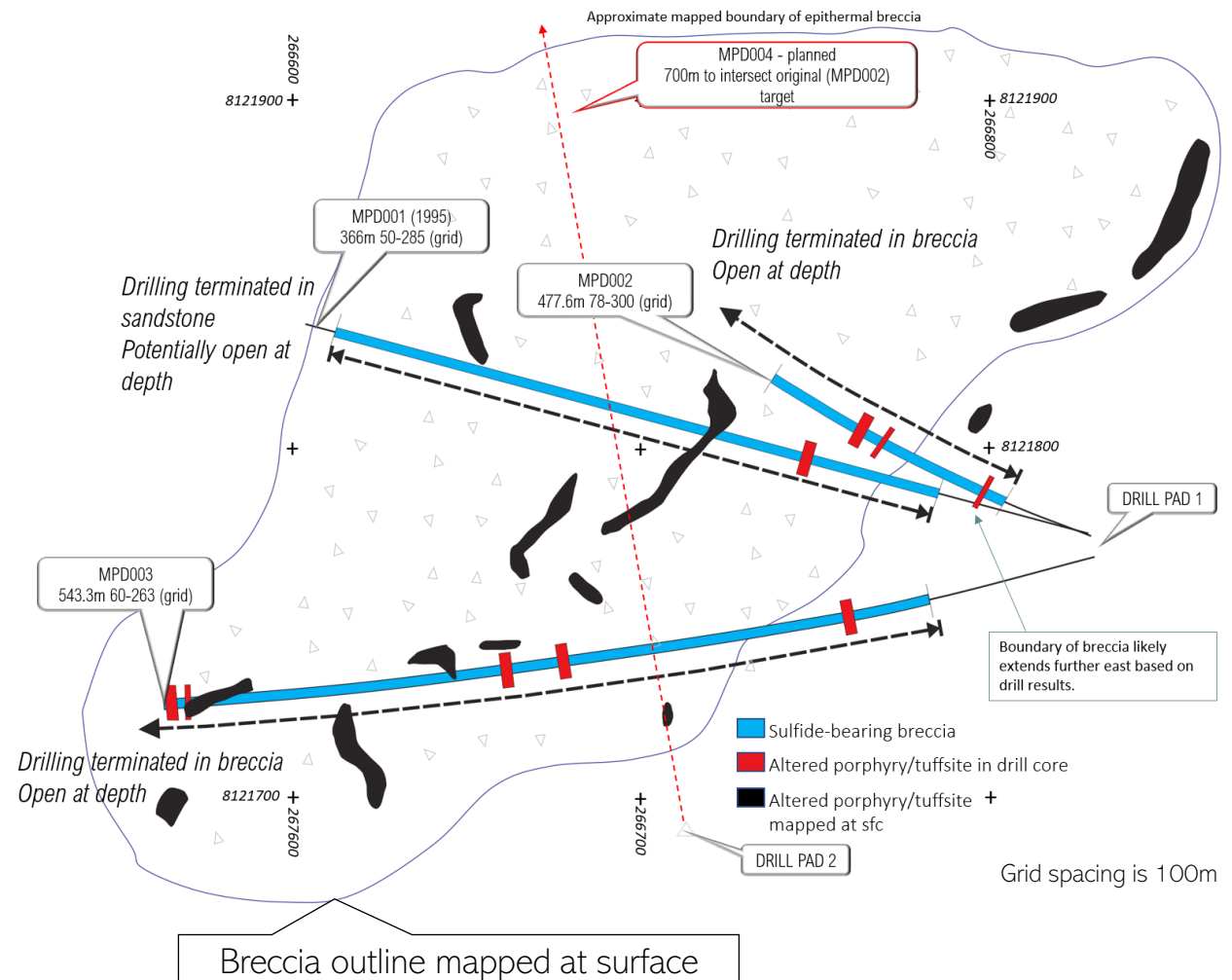
## MPD002 – silver, gold and zinc in NMR's first drill hole



- Best results from drill hole MPD002 include:
  - Multiple 1m intervals recording grades up to 2.14 g/t Au, 1.7% Zn, 0.5% Sb, 57.1g/t Ag, 0.75% Pb and 0.35% Cu including;
    - 1m (414-415m) at 57.1 g/t Ag, 0.1 g/t Au, 0.51% Zn, 0.12% Cu, 0.23% Pb and 204 g/t Sb)
    - 1m (284-285m) @ 24.8g/t Ag, 0.3% Pb, 789ppm Sb, 0.54% Zn
    - 5m (202-207m) at 0.4 g/t Au, 21.5g/t Ag, 226 ppm Cu, 1834 ppm Pb, 410ppm Sb and 0.31% Zn
- Drill hole MPD002 intersected massive, semi-massive, and disseminated sulfides for over 370m from approximately 107m depth downhole (edge of the breccia) to the EOH at 477.6m.
- As predicted, the grades for Au, Zn, Sb, Ag, Pb and Cu are significantly higher than the previous drill hole MPD001\* drilled in 1995. \*Historical best values are 0.1g/t Au, 0.9 % Zn, 0.01% Sb, 15.8g/t Ag, 0.3% Pb and 0.18% Cu.

\* Drill hole was terminated early due to difficulties maintaining trajectory towards target. The drill hole did not reach its target depth and remains open below the current EOH at 477m

*Surface footprint = 45000m<sup>2</sup>. Proven >450m depth*





# **Palmerville Project North Queensland**



# Palmerville Project QLD

## Discovery and investor opportunity - Cu, Au and Sb

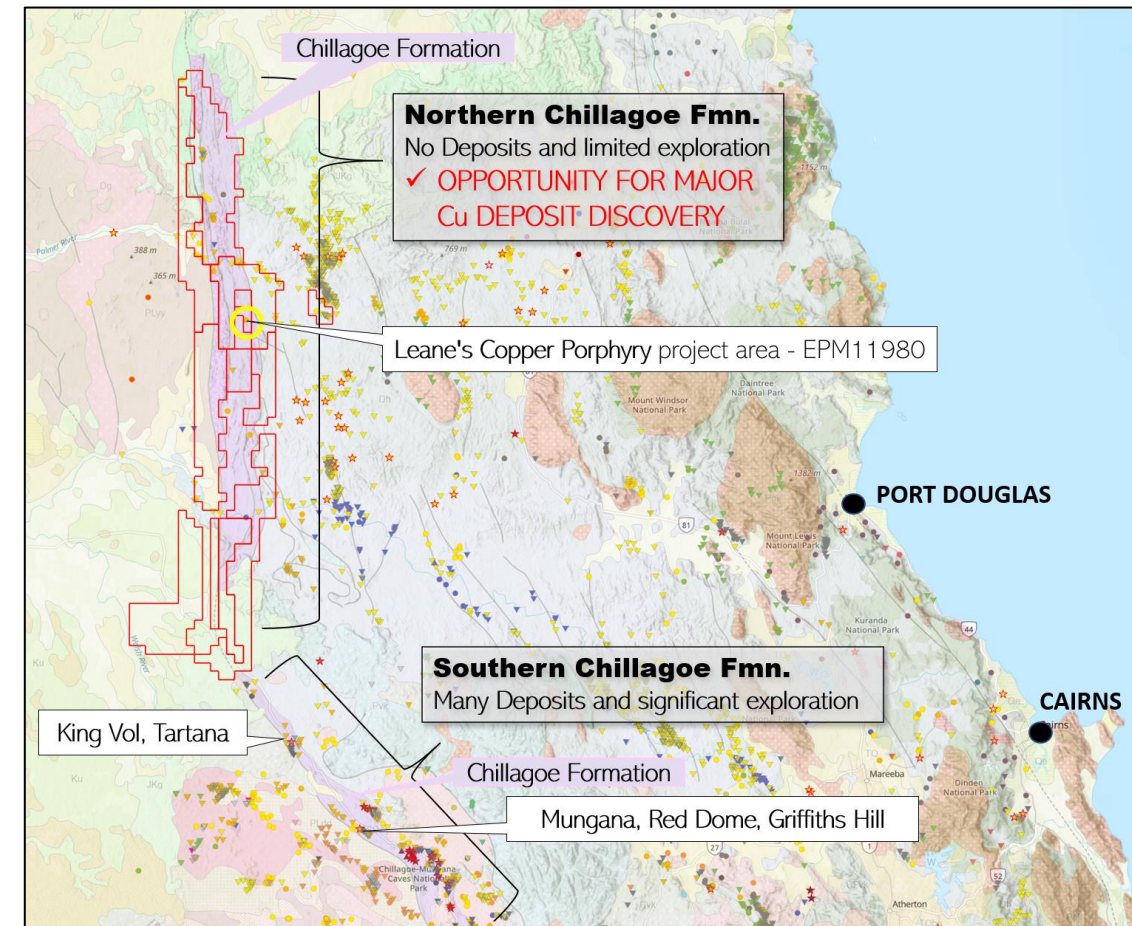


### Overview

- 130-kilometre-long tenement package covering almost the entire northern Chillagoe Formation
- Most underexplored part of the Chillagoe Formation = increased opportunity for discovery
- Close to existing mines and infrastructure
- One of the fastest growing areas of exploration for copper and gold in Queensland
- Tenements cover part of the extremely rich Palmerville Goldfields

### Attributes

- Significant area made up of 9 tenements, 527 sub-blocks, 1819 km<sup>2</sup>, 100% owned by NMR
- NMR was awarded \$200,000 government funding to undertake geophysical survey over the entire project
- Over 50 targets identified including Cu, Au, Sb, Pb, Zn and Ag.
- Existing copper targets at Leane's, Fairlight-St George (historical copper mining), Glenroy (Historical copper mining), Pinnacle Hill, etc
- Multiple potential copper breccias (e.g. Pinnacle Hill) identified for immediate follow-up.



# Top-ranking prospects for 2023

## St George - Fairlight (COPPER)

- The Fairlight mine is an ~30m deep shaft at the contact between red jaspers and altered mafic intrusives.
- Historical mining with grades reported to be 24% copper ore.\*
- Initial NMR samples returning positive results of up to 7.99% Cu with 9ppm Ag.

## Leane's Copper (COPPER)

- Copper already identified at Leane's prospect
- Surface samples of up to 31.1% Cu
- Shallow drill intercepts of 33m @ 0.49% Cu including 2m @ 1.1% Cu (LRC04)
- 9 shallow drill holes completed
- Interpreted top of deeper porphyry system, with geophysics planned before deep drilling completed

## Glenroy (COPPER)

- Glenroy also associated with historical mine shafts
- Samples from NMRs recent field campaign returned grades of 19.9% Cu

## Bald Hills (GOLD)

- Located on major, prospective regional aeromagnetic anomaly
- Same copper belt as Leane's copper breccia project
- Also contains historical copper workings.
- Anomalous gold and copper values from soil and rock chip sampling, 8.1 g/t Au and 0.575% Cu.

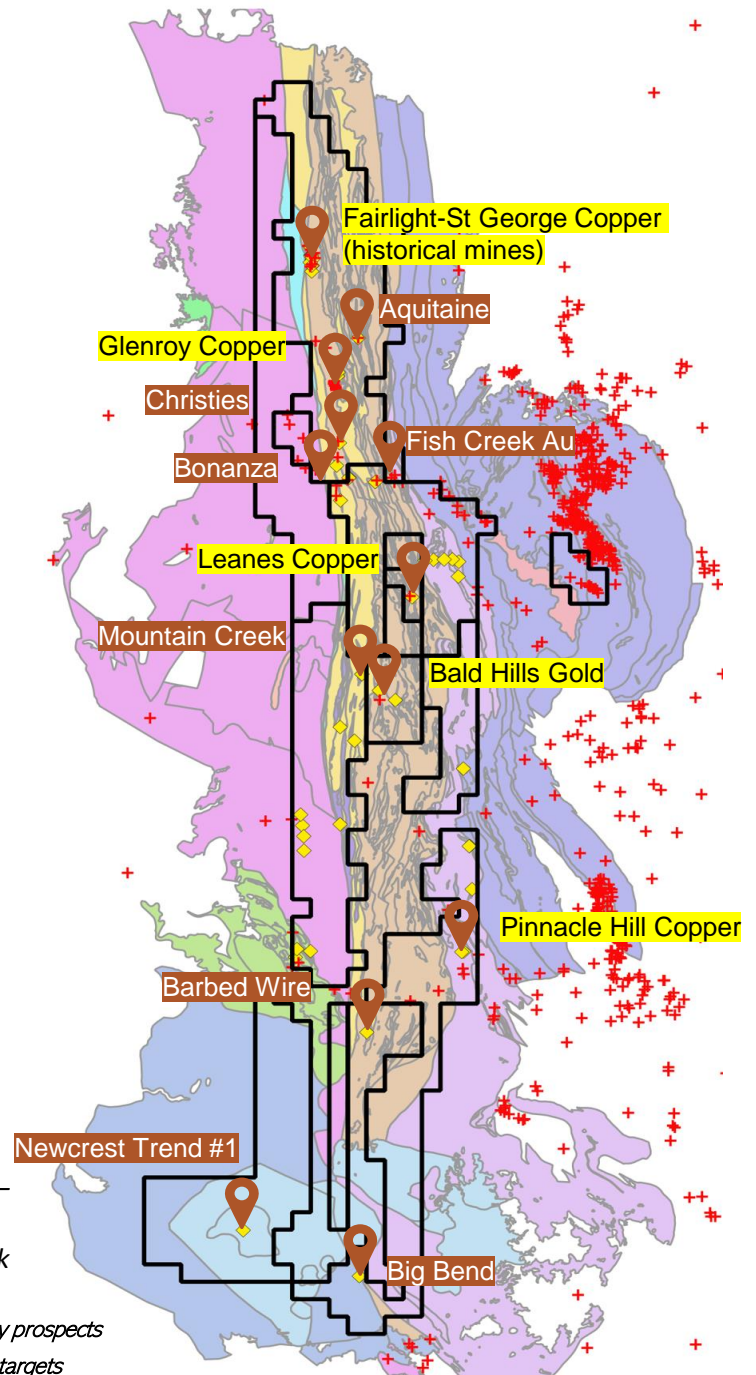
## Pinnacle Hill (COPPER)

- Possible Cu-Au breccia pipe containing historical workings
- Rock Chip samples of 13.8 and 11.3% Cu
- Initial multispectral results pointing towards multiple copper targets
- Under explored target with high potential

*\*Denaro, DME, 1995 –  
Mineral Resource  
Inventory of Cape York  
Peninsula*

**Copper** = NMR priority prospects

**Big Bend** = NMR other targets

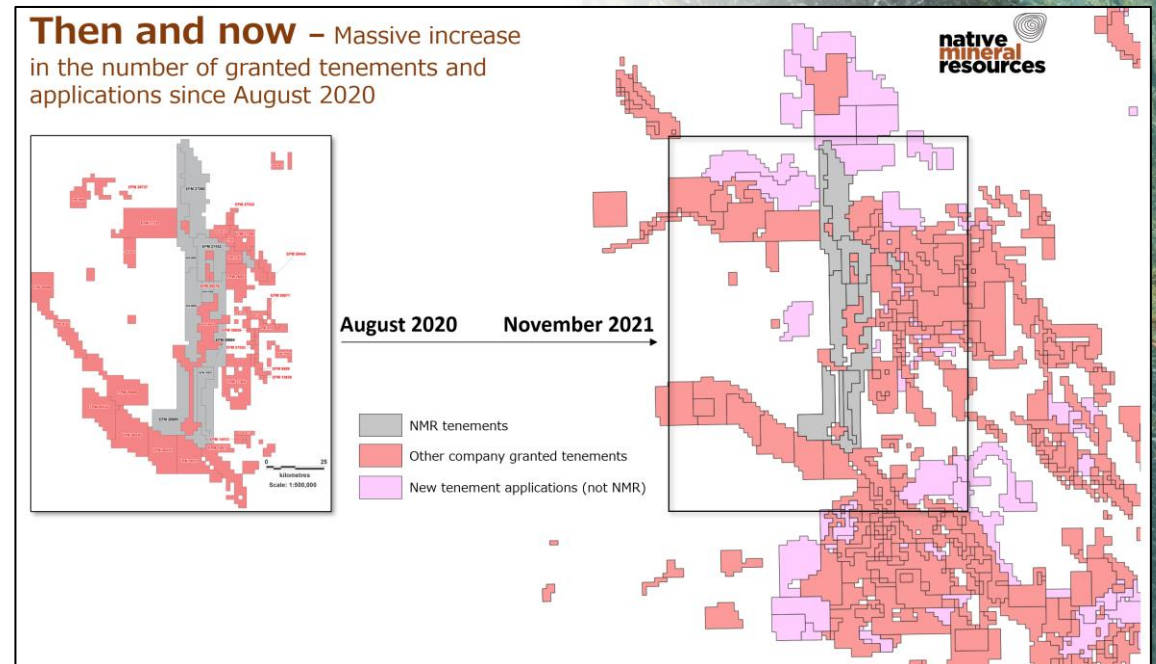
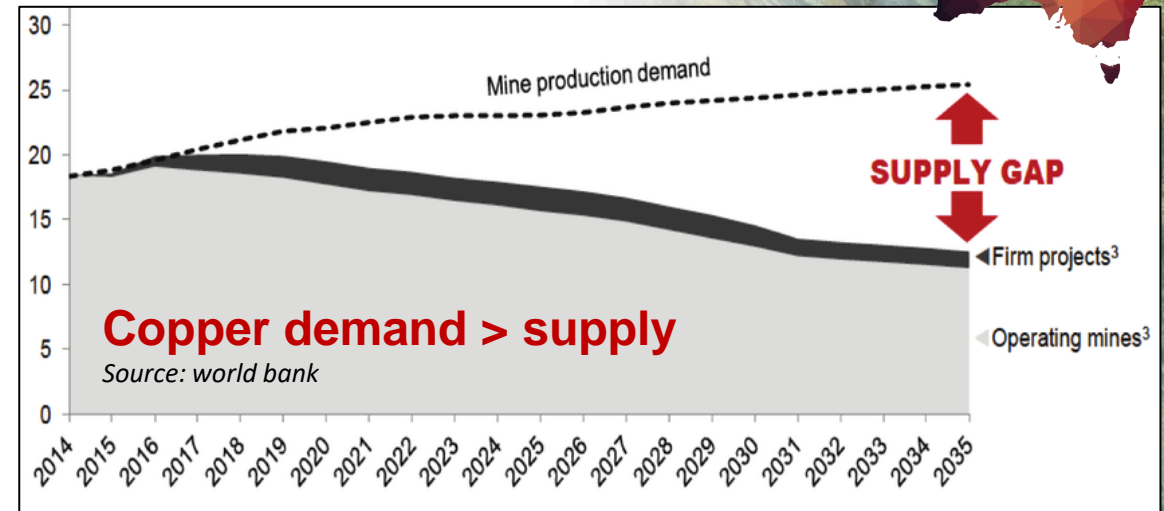




# Palmerville Project QLD

## NMR's highly competitive ground

- 1) Copper demand is predicted to outstrip supply, therefore high-potential, short-term targets are extremely sought-after. The Palmerville Project represents a significant area for copper deposit discovery.
- 2) NMR's Tenements are in the heart of the Chillagoe-Palmerville gold and copper country.
- 3) NMR holds what it believes to be the most prospective copper and gold exploration tenements in the region
- 4) NMR's top five Copper targets all exhibit surface rock chip samples containing over 10% percent copper. Bald Hill is a gold target with grades of up to 8.1 g/t Au.
- 5) Several EPM's overlapping part of the famous Palmerville alluvial goldfields.



# Palmerville Project QLD

## Leanne's Cu Prospect



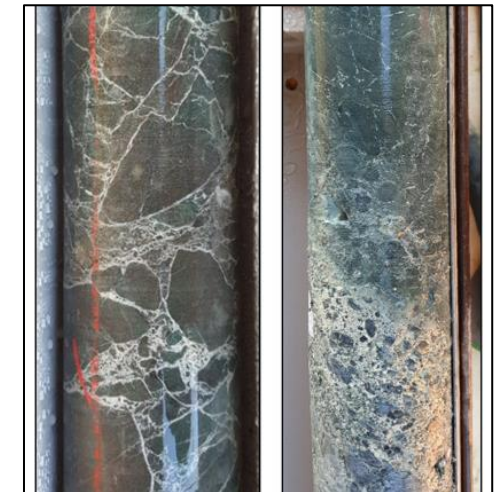
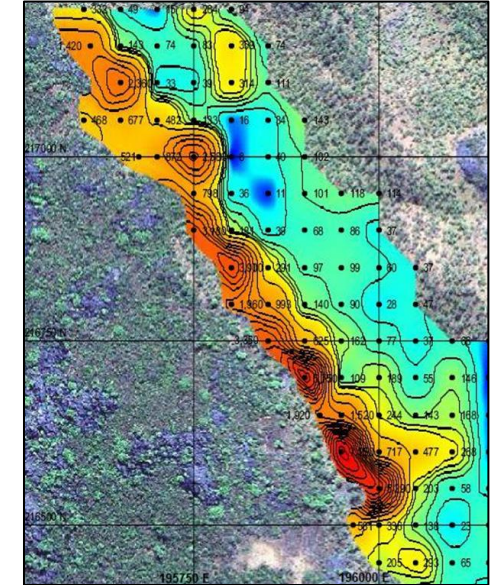
Short-term potential for a copper discovery with exceptional results already obtained.

DECREASED RISK - Well-defined target anomaly found at surface - soil sampling and rock chips indicate very high prospectivity

- Historical soil sampling with up to 7750ppm Cu is indicative of a copper-rich system
- 700m anomaly defined by >1000ppm Cu within hydrothermal breccias at limestone contact. 13 samples on the trend have an average of 3110ppm Cu.
- Best rock chip samples are 31.1% Cu, 23.9% Cu, 1.29% Cu, 1.32% Cu, 3.55% Cu and 5.53% Cu

Initial shallow drilling has produced some encouraging results leading to the planning of a deeper drill hole.

- 28m @ 0.55% Cu, 4m @ 0.55% Cu, 11m @ 0.32% Cu
- 2 separate drill holes intersect multiphase porphyry intrusives with disseminated and massive sulfides evident.
- On-track for quick discovery. The current results are equivalent to the results found in early stages of Mungana, a deposit to the south of Leanne's with a JORC 2004 Probable Resource of 1,130,000 tonnes @ 10.2% Zn, 0.8% Pb, 1.7% Cu, 1.04g/t Au and 122g/t Ag.
- Fine-grained **porphyry intrusives** synonymous with major Mungana, Red Dome and King Vol mine deposits to south.
- Results continue to prove NMR's exploration model for a Mungana-style copper breccia or Porphyry deposit.





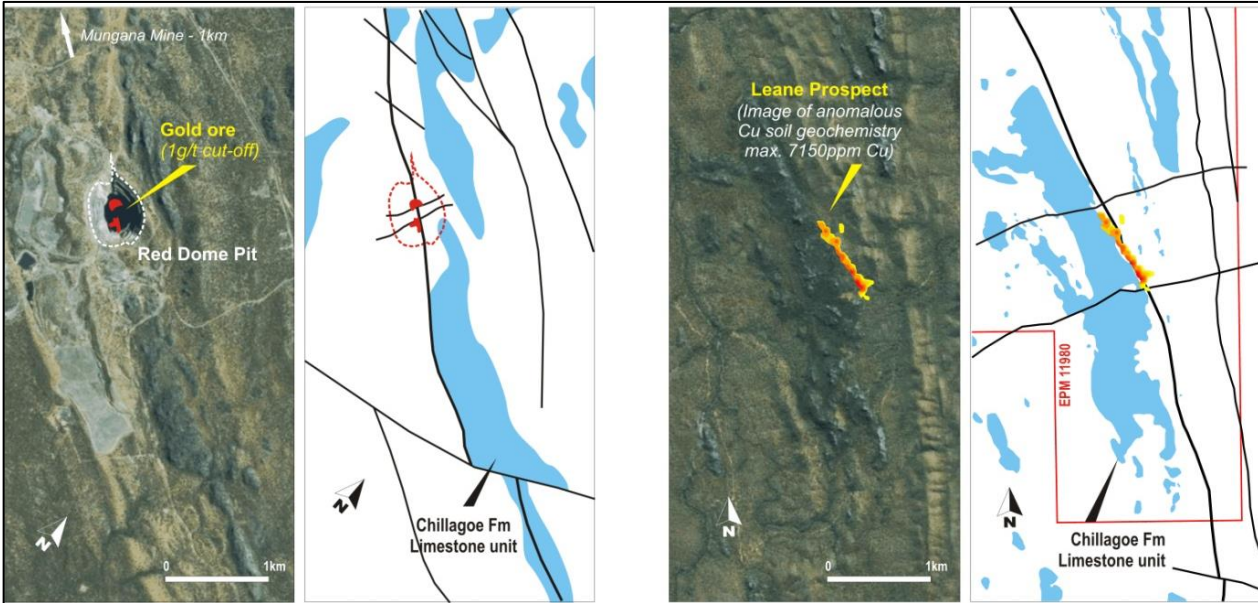
# Palmerville Project QLD

## Leanne's Cu Prospect

- Located less than 120 kilometres north of multiple Copper + Gold + Silver + Lead + Zinc mines of the famous Chillagoe mining district.
- On-track for quick discovery using knowledge (e.g. depth to target) gained from studying other copper mines in the region.
- Leanne's is located within the same Chillagoe Formation as other deposits and also exhibits very similar geology to the deposits such as Mungana and Red Dome (see table below)
- Similar size and surface anomaly footprint to the Red Dome deposit (see comparison figure below)
- Fine-grained porphyry intrusives recovered in drill holes. The intrusions and rock associations are synonymous with major Mungana, Red Dome and King Vol mine deposits to south.
- The current results are equivalent to the results found in early stages of Mungana, a JORC 2004 Probable Resource of 1,130,000 tonnes @ 10.2% Zn, 0.8% Pb, 1.7% Cu, 1.04g/t Au and 122g/t Ag

Similarities between Leanne's and other deposits nearby

Leane's Prospect	Red Dome Deposit	Mungana Deposit
✓ <b>Karst weathering breccias</b>	Karst weathering breccias	Karst weathering breccias
✓ <b>Hydrothermal breccias</b>	Hydrothermal breccias	Hydrothermal breccias
✓ <b>Hydrothermal breccias silica flooded, sulphide bearing and milled clasts</b>	Hydrothermal breccias silica flooded, sulphide bearing and milled clasts	Hydrothermal breccias silica flooded, sulphide bearing and milled clasts
✓ <b>Hydrothermal silica breccias indicate fluid and magma source at depth?</b>	Fluid and magma source at depth	Fluid and magma source at depth
✓ <b>Highly leached porphyry as quartz in hydrothermal kaolinite Matrix</b>	Highly leached porphyry as quartz in hydrothermal kaolinite Matrix	Highly leached porphyry as quartz in hydrothermal kaolinite Matrix



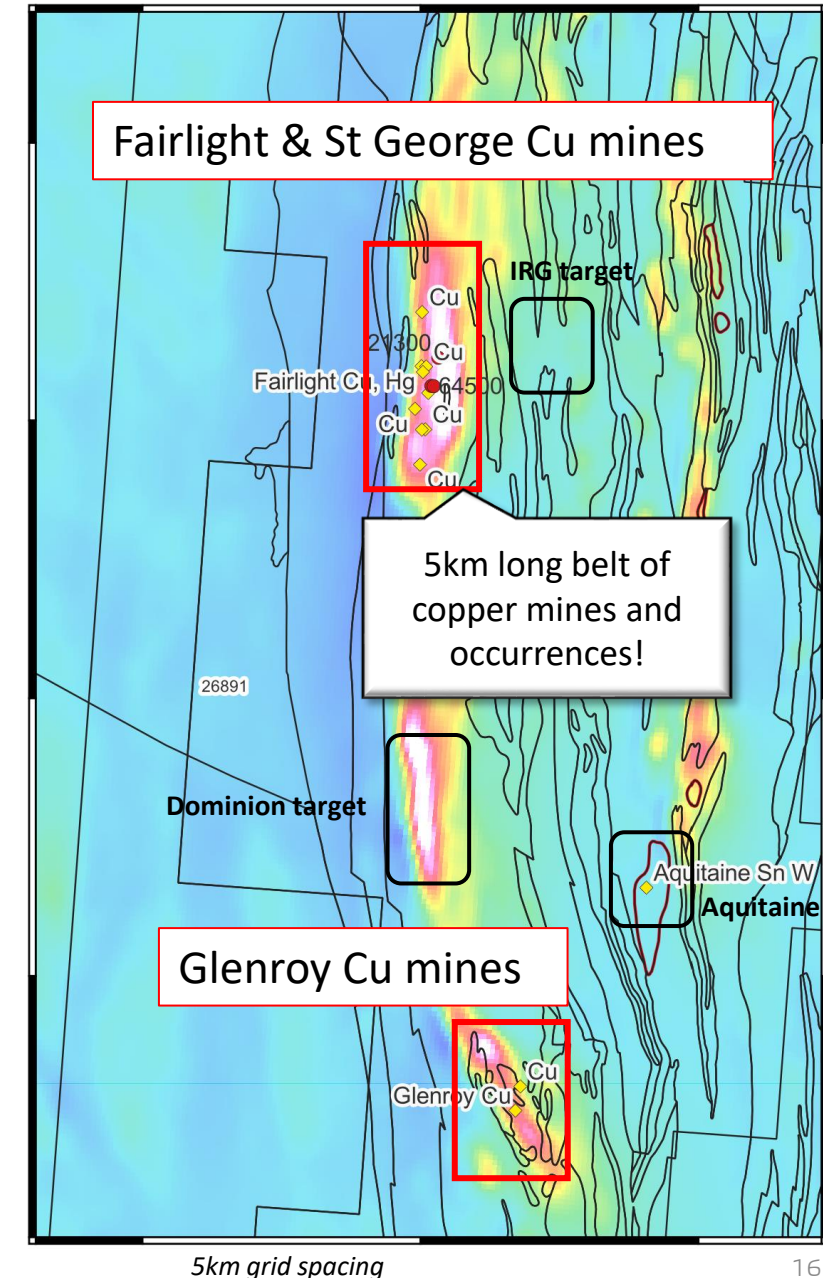
# Palmerville Project QLD

## Fairlight - St George Cu Prospect



- ✓ Very high potential for a copper discovery exceptional results already obtained from a proven copper producing area.
- ✓ Small tonnages (est 5t) of ore were reportedly mined at estimated grades of 24% Cu Ore from one of the historical mines a St George (ca. 1905).
- ✓ Shafts reaching 30m depth. The site is also surrounded by multiple historical workings suggesting extensive copper footprint at the surface.
- ✓ Historical rock chip samplings returned values of over 1 oz/t silver.
- ✓ >5km-long area rich in copper at the surface. No high-risk exploration under cover required.
- ✓ Rock types are prospective being basalt, silicified breccia, and quartzite. Mineralisation occurs in limonitic veins, pipes, breccia fill, and disseminations.
- ✓ Reported ore minerals included copper carbonates, malachite, chalcocite, tetrahedrite, tennantite, enargite, chalcopryite, bornite, and cinnabar.
- ✓ NMR's own rock chip sampling of new prospects to the south of the historical mining area are revealing high potential with up to 7.99% copper.
- ✓ Historical soil sampling\* with samples returning over 10,000 ppm Cu is indicative of a copper-rich system

*\*NMR have not re-sampled the area where these historical soil samples were obtained.*





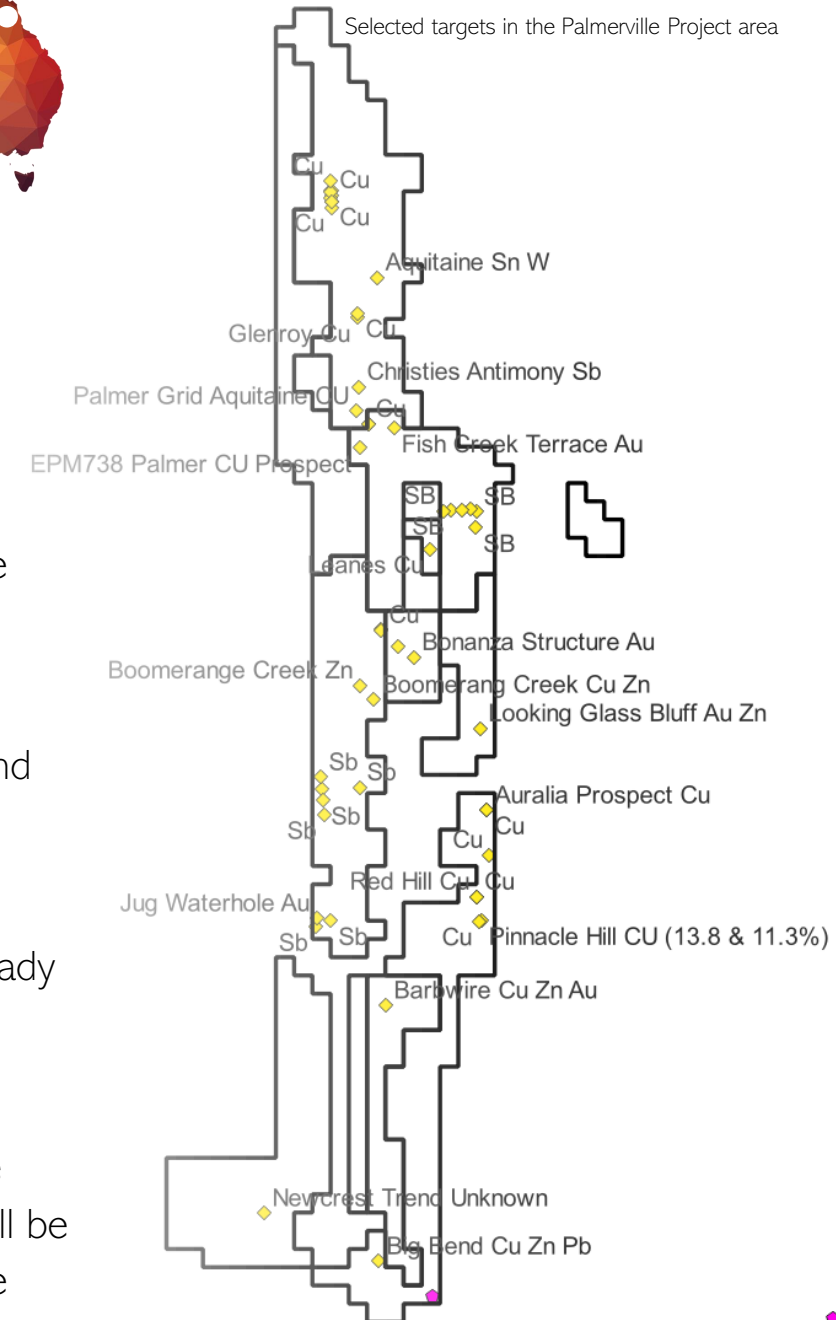
# Palmerville Project QLD

## Expected outcomes for 2023

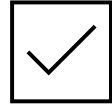


### Exploration in 2023 – Palmerville Project

- 1) Airborne Magnetics survey will be undertaken in April 2023 to help better define target lithologies and structures.
- 2) Immediate follow-up field work at the St George-Fairlight prospect where mining grades were reported to be 24% Cu Ore.
- 3) Immediate field work at the other Cu and Au targets including Glenroy (Cu), Bald Hill (Au) and Pinnacle Hill (Cu).
- 4) Geological modeling and interpretation of existing data at Leanne's copper prospect has already been completed and a new 700m-deep diamond drill hole has been designed.
- 5) Planning is underway for higher-resolution geophysical surveys to be completed following the results from the Airborne Magnetics. Different geophysical methods applied to each target will be selected to best suit each target. A final decision will be made following the acquisition of the airborne magnetic data.



# **Palmerville and Maneater Project – Abundant Copper and Gold target set for growth**



**Proven copper with mining grades of 24% Cu ore and assays of up to 31.1% in samples from many targets across the project area.**



**5 Cu-Au targets ready. Over 50 high priority Copper and Gold targets ready for follow up field work.**



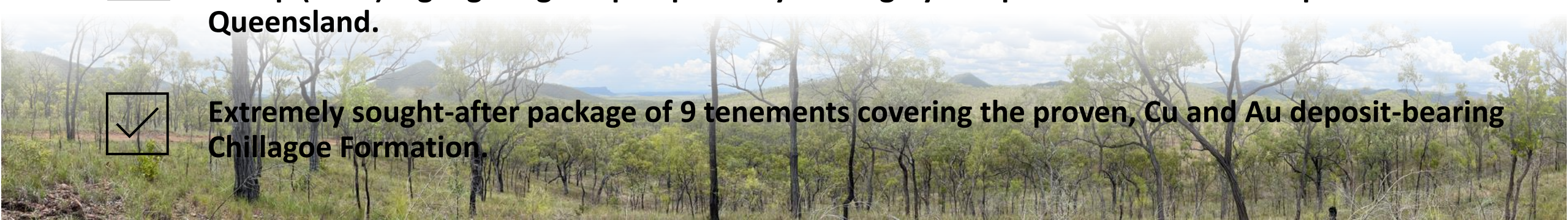
**Drilling at the Maneater Hill Breccia already revealed significant Pb, Zn, Ag and abundant sulfide mineralisation.**



**All tenements (e.g. Maneater) are now surrounded by companies including Fortescue Metals Group (FMG) highlighting the prospectivity and highly competitive nature of this part of Queensland.**

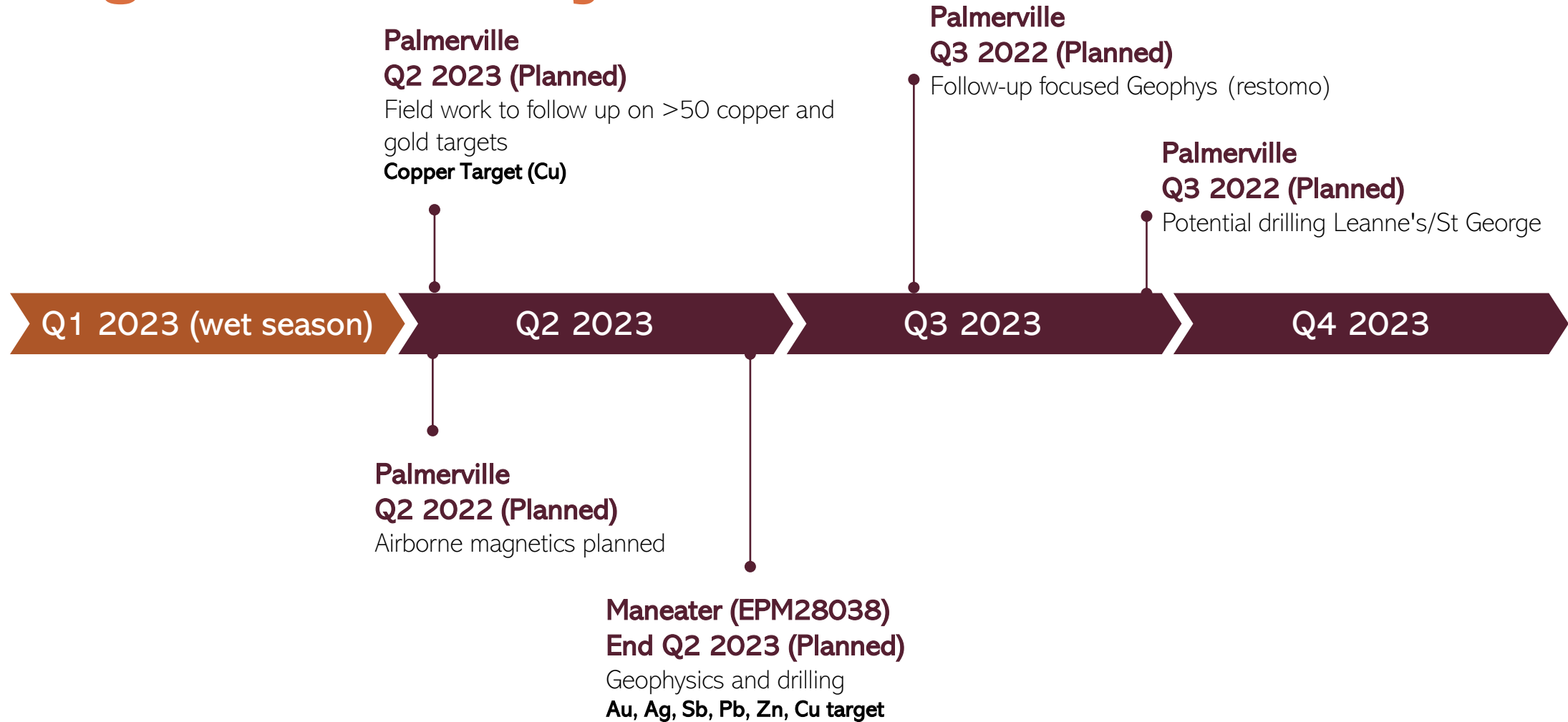


**Extremely sought-after package of 9 tenements covering the proven, Cu and Au deposit-bearing Chillagoe Formation.**





# 2023 Palmerville-Maneater Work Program Summary







# **Nullarbor Project Western Australia**

## *Overview*

*Actively exploring for IOCG and related-style mineralisation (e.g. Ernest Henry type – Evolution Mining)*



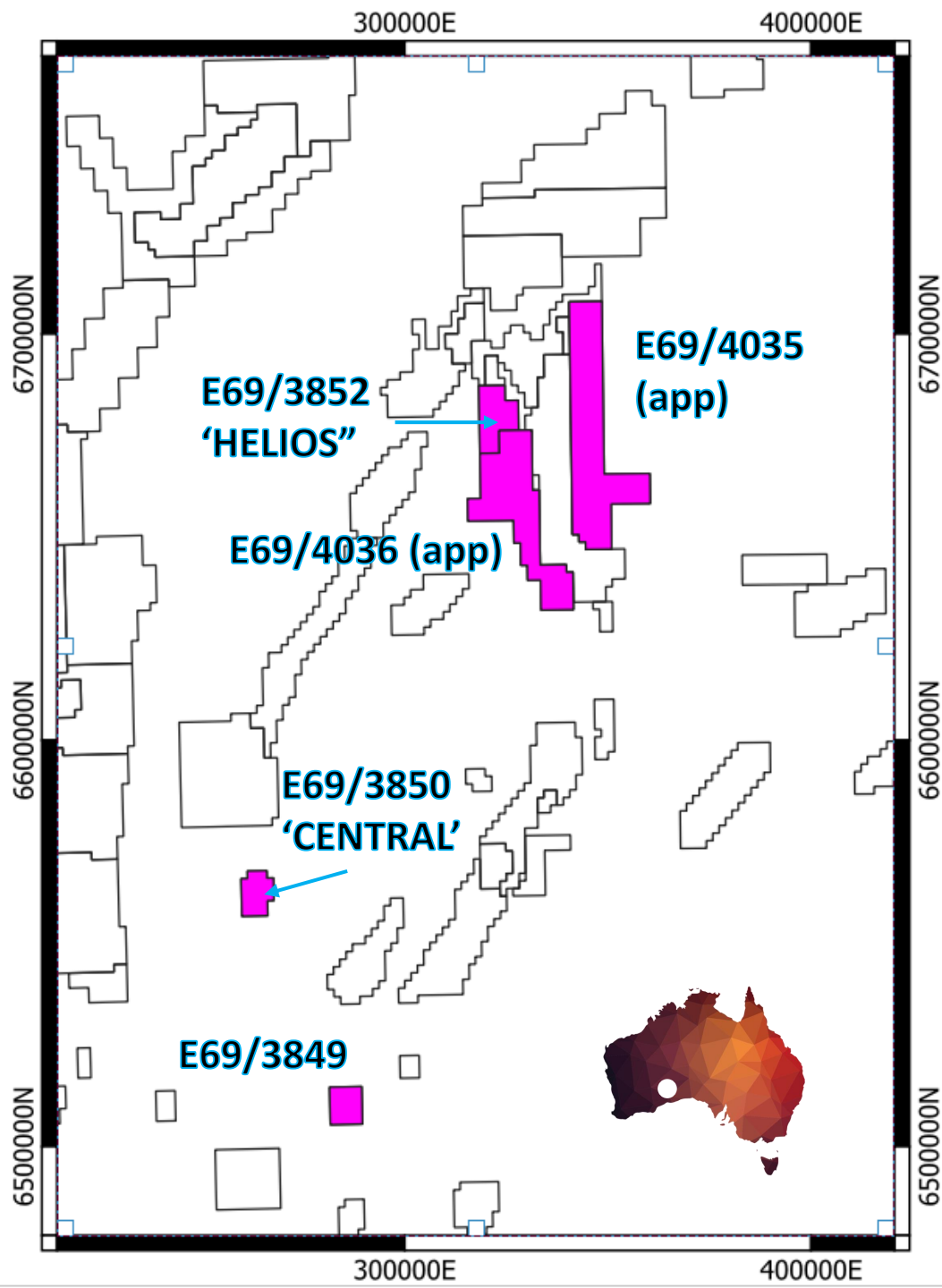
# Nullarbor Project Summary

**EARLY EXPLORER ADVANTAGE** - NMR is the leader in this exciting new and rapidly developing region. NMR have already discovered the first ever IOCG-style alteration.

**PRIME EXPLORATION GROUND** - Three granted tenements and two applications totalling 1303km<sup>2</sup> of prime exploration ground.

**ALREADY GENERATING EXCITING RESULTS** - NMR have completed two drill holes and currently finishing the third hole due for completion at the end of August 2022.

- (1) Helios Phase 1 drilling (DDH\_001) in March 2022.
- (2) Central drilling (DDHC\_003) in Aug 2022 and both have identified significant alteration typically associated with mineralisation and ore deposits.
- (3) Currently drilling Helios Phase 2 (DDH\_002)





# Nullarbor Project Summary



**GOVERNMENT SUPPORT FOR DRILLING AND EXPLORATION** - \$220,000 government grant awarded to NMR to drill second hole at Helios on the back of results from Helios\_DD001 containing pervasive IOCG-style alteration.



**MORE POSITIVE RESULTS FROM GRAVITY SURVEY** - A high-resolution ground-based gravity survey was completed in May 2022 which used to pinpoint the target for the second diamond drill hole (DDH\_002).



**NMR ARE LEADERS IN EXPLORATION ON THE NULLARBOR** - Helios Second drill hole (HELIOS\_DD002) completed at just over 1000m with significant hematite alteration identified.



**EARLY ACQUISITION OF THE BEST TARGETS** - First explorer advantage in rapidly developing and increasingly competitive frontier terrain

**IOCG-style hematite  
alteration in drill core  
HELIOS\_DD001**



# Nullarbor Project – Current Exploration



## HELIOS Project Area

Structurally controlled IOCG style IOCG target

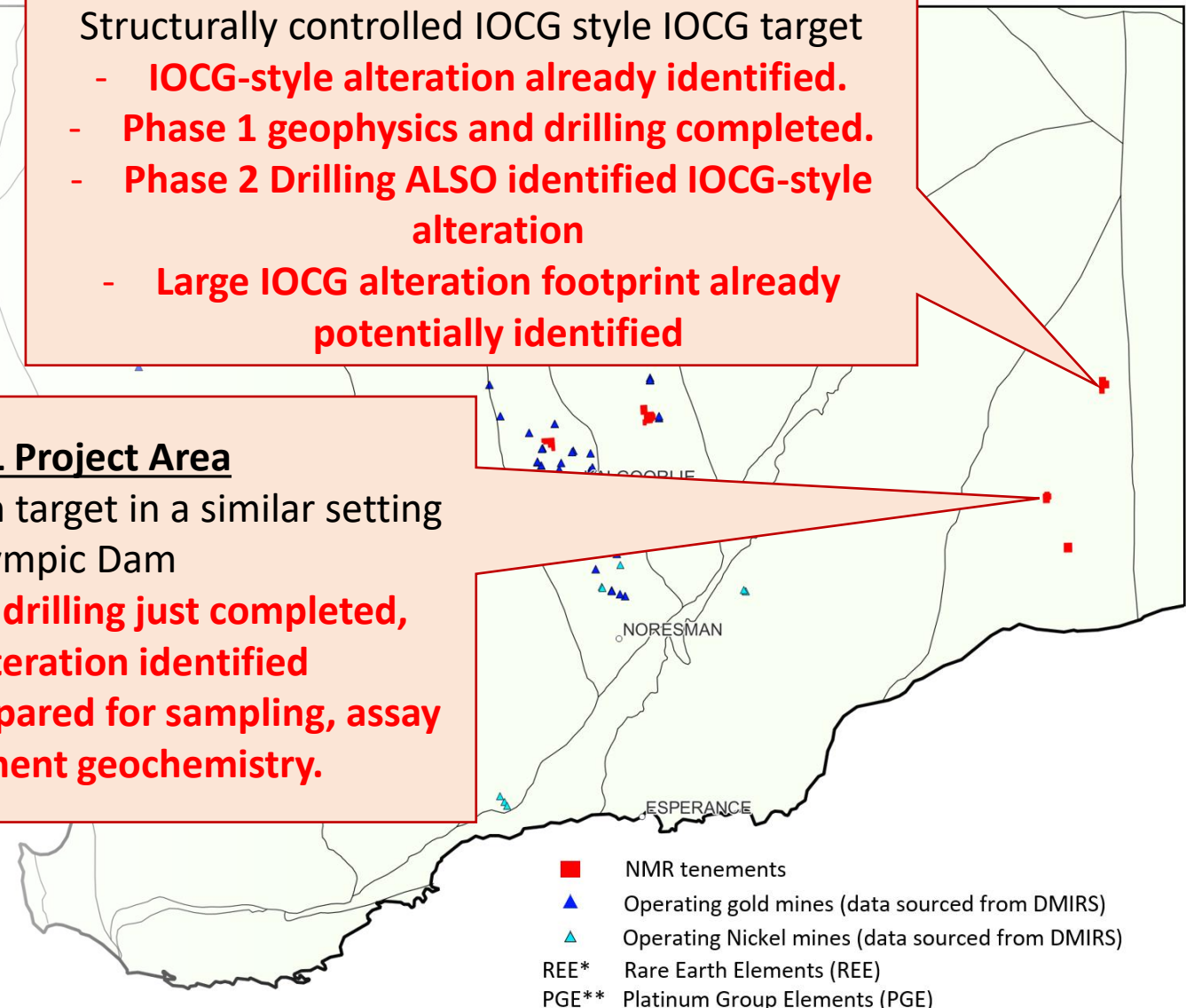
- **IOCG-style alteration already identified.**
- **Phase 1 geophysics and drilling completed.**
- **Phase 2 Drilling ALSO identified IOCG-style alteration**
- **Large IOCG alteration footprint already potentially identified**

## CENTRAL Project Area

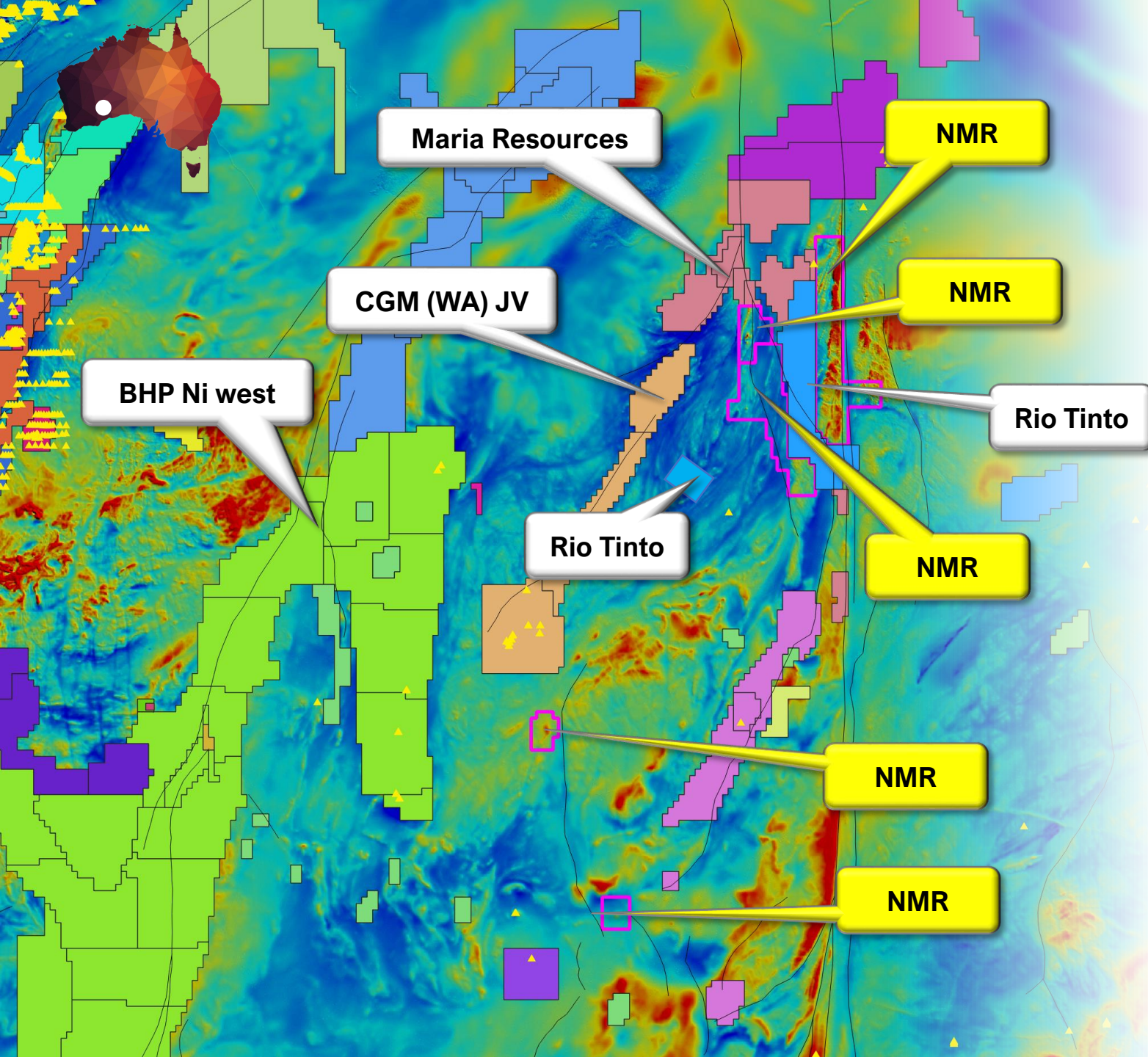
IOCG/Porphyry/Skarn target in a similar setting to Olympic Dam

- **Phase 1 diamond drilling just completed, significant alteration identified**
- **Drill core being prepared for sampling, assay and multielement geochemistry.**

*Hematite (silver) and hematite alteration (red) in drill core  
HELIOS\_DD001*







# The Nullarbor is a new and rapidly growing terrain in Australia

The Nullarbor is being recognised as a highly prospective, under explored region in Australia.

New tenement applications are increasing with particular interest from majors such as Rio Tinto Exploration (RTX), BHP Ni West, Maria Resources (Strategic Elements) and CGM.

NMR had a first mover advantage and picked up the best targets (Helios).



# Nullarbor Project

## HELIOS IOCG – Successful Completion of diamond drill hole



“NMR have made a *significant discovery*. IOCG-style alteration identified in its very first drill hole”

Photos below are of the drill core from Helios\_DD001 showing the typical red rocks indicative of IOCG-style hematite + magnetite + pyrite + sericite alteration. The rocks are comparable to the alteration associated with Ernest Henry and Olympic Dam IOCG deposits (*refer to previous announcements for details*)





# Nullarbor Project

## HELIOS IOCG – DDH001 Similar alteration to Olympic Dam



**OLYMPIC DAM**  
HEMATITE STAINED  
GRANITE  
HRQM  
RD2274-372.5 m

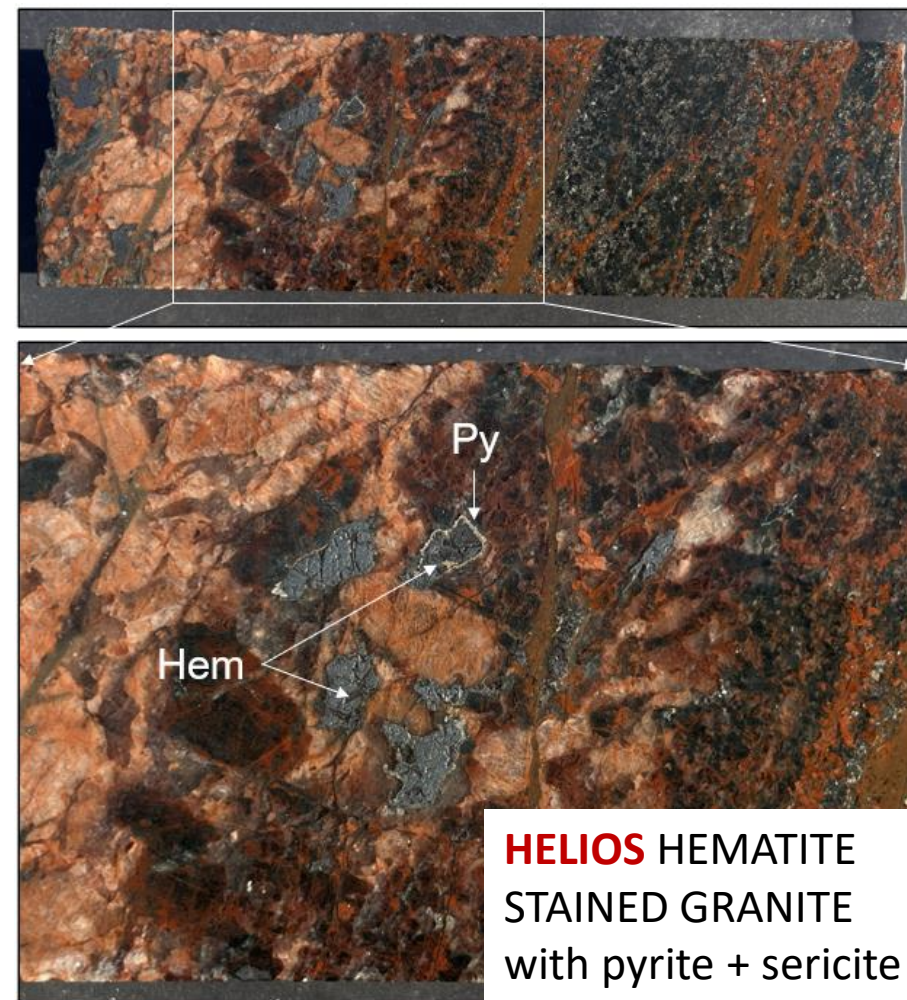


Olympic Dam

**HELIOS** HEMATITE  
STAINED GRANITE  
(sample # 111)



Helios DDH001



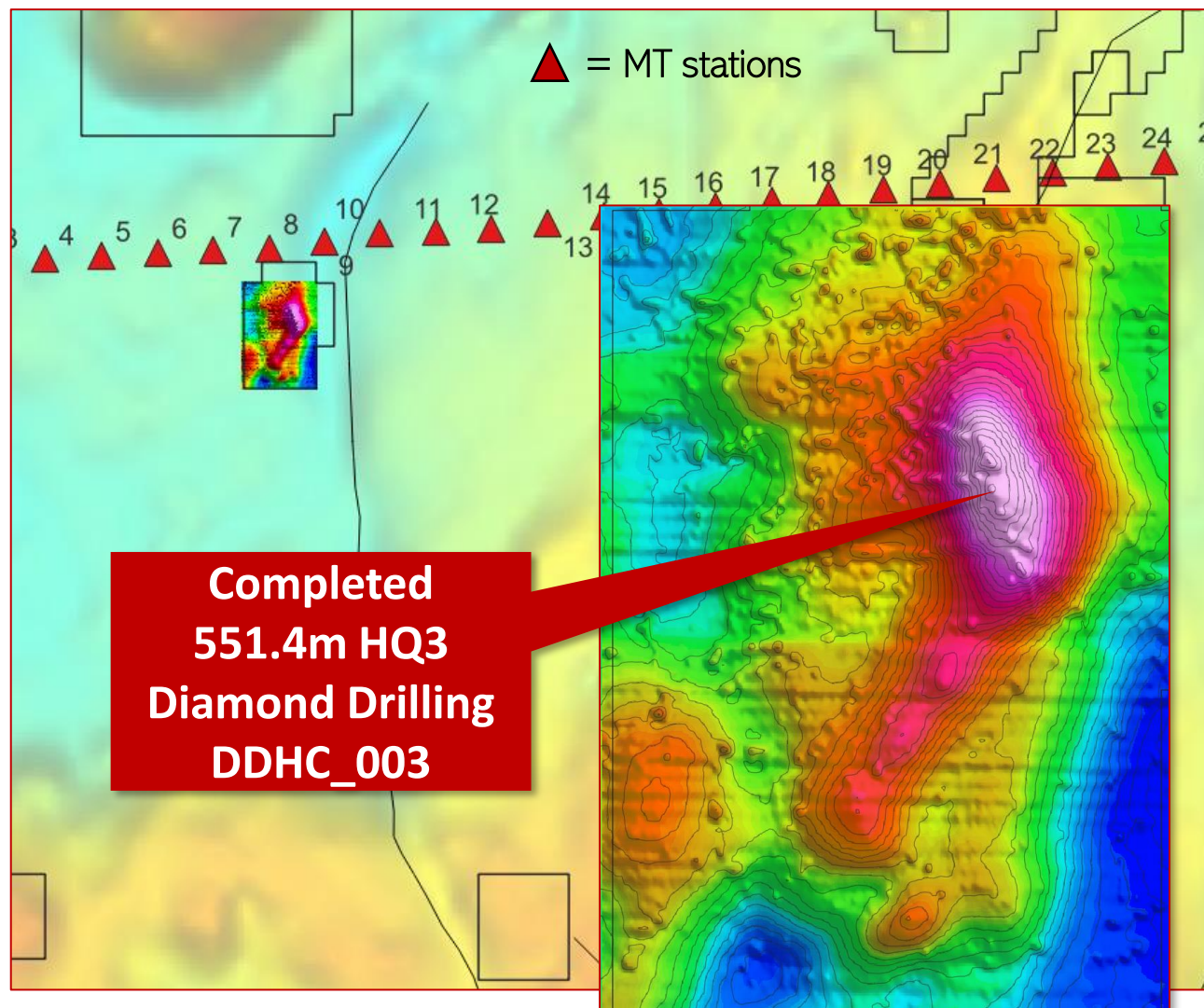
**HELIOS** HEMATITE  
STAINED GRANITE  
with pyrite + sericite

Helios DDH001



# Nullarbor Project

## CENTRAL IOCG – Successfully Completed DDHC\_003



Complex, multiphase “green rock” and “red rock” alteration identified in first ever drill hole!

- Diamond hole DDHC003 targeted a 3.2 km long magnetic high
- Central target ridge is 1200m long and 400m wide
- Magnetic peak is over 760nT (400m depth)
- Primary magnetic target ridge is oblique to the regional NE-magnetic and gravity fabric



# Nullarbor Project

## CENTRAL IOCG – Initial Core Observations (DDHC\_003)



Examples of “green rock” and “red rock” alteration in the Central\_DDHC003 HQ diamond drill hole



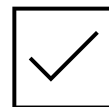
# **Nullarbor Project - On the road to discovery**



**Successful drill results from all drill holes completed at both Helios and Central**



**Significant financial support from the government to drill a second drill hole at Helios**



**Impressive magnetics and gravity survey results have helped focus drill holes to help pinpoint potential mineralisation associated with positive identification of IOCG-style alteration**



**IOCG-style alteration in second hole confirms large alteration footprint**



**Results meet most of the geological and geochemical targeting criteria for IOCG deposits including significant Hematite and Magnetite and hematite and potassic alteration together with elevated Uranium, depleted Titanium.**



# Eastern Goldfields Western Australia

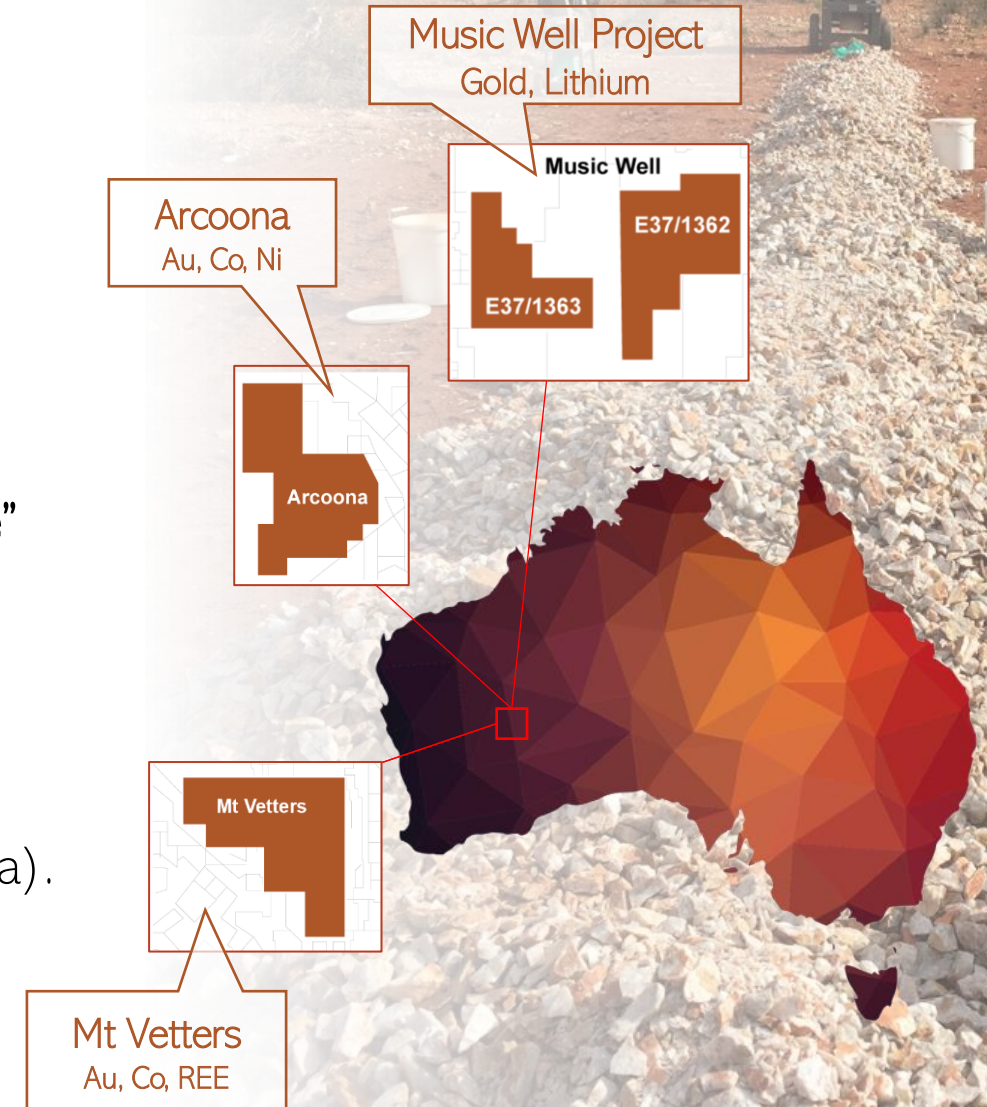
*Four highly prospective  
tenements located in the heart  
of gold country*



# Eastern Goldfields Project

**Multiple opportunities in some of the world's most competitive and sought-after gold ground**

- 4 Greenfields exploration tenements:
  - ✓ Music Well (2 tenements), Arcoona & Mt Vettters.
  - ✓ Samples up to 147g/t Au (bonanza grades) already recovered from Rock Chips at surface (Music Well).
  - ✓ **Visible gold** in multiple surface rock chip samples
- Exploring granite hosted Au **adjacent to proven “gold-in-granite” mines** (e.g. the Welcome Mine).
- Surrounded by significant projects including:
  - Northern Star >660,000 oz Au combined resource and >400,000 oz Au past production (Bundarra project area).
  - Mandilla Project (19.8mt @ 1g/t Au) Anglo Australia Resources (\$65m market cap)
  - Bundarra Project Northern Star (2017 sold for \$8.5M)

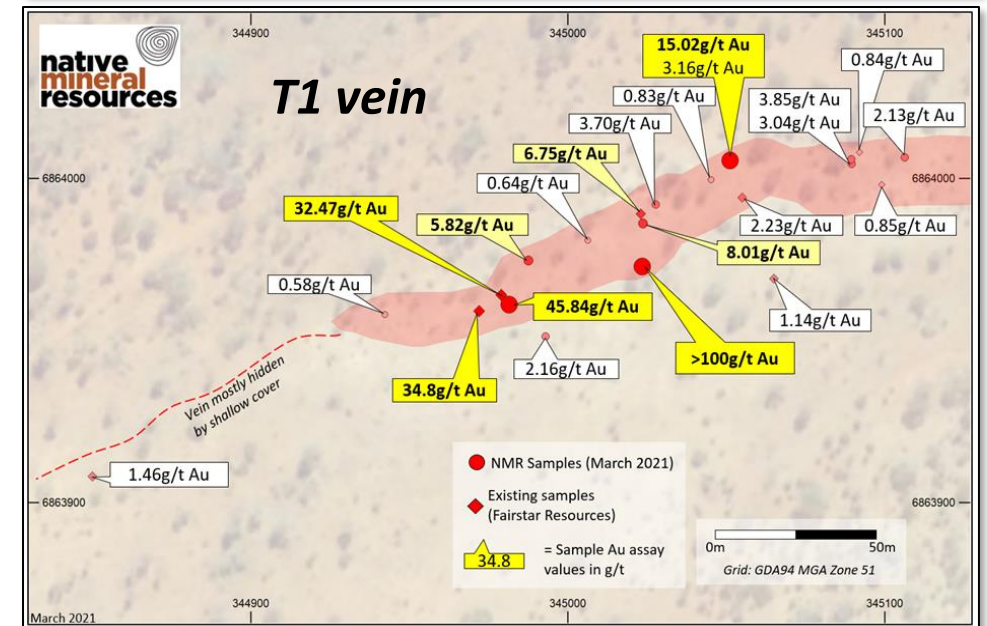
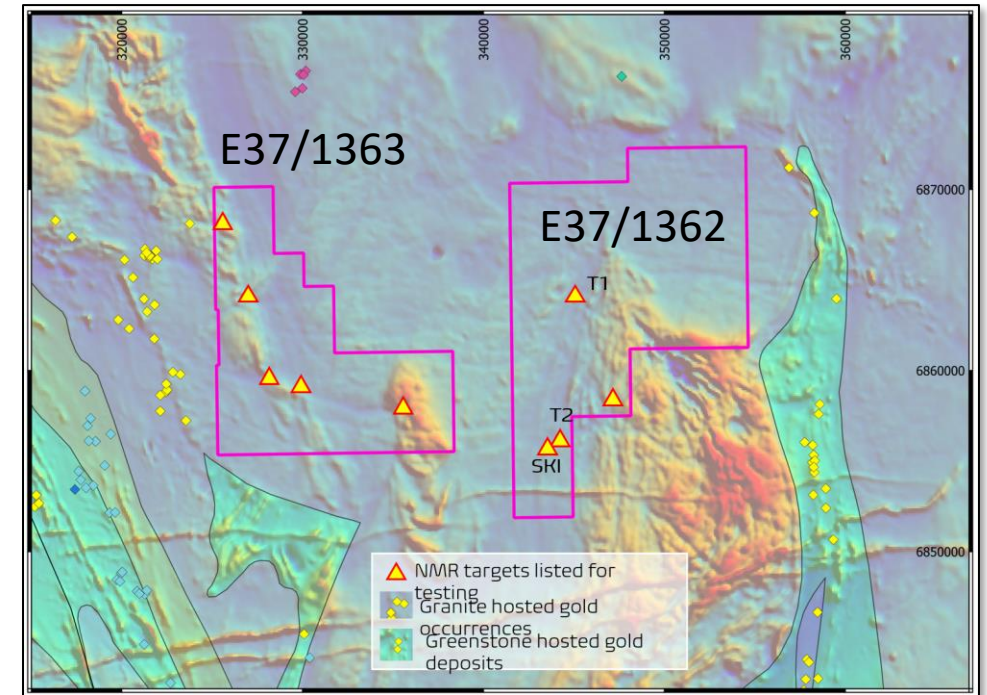




# Eastern Goldfields Project

## Music Well: Gold & Lithium

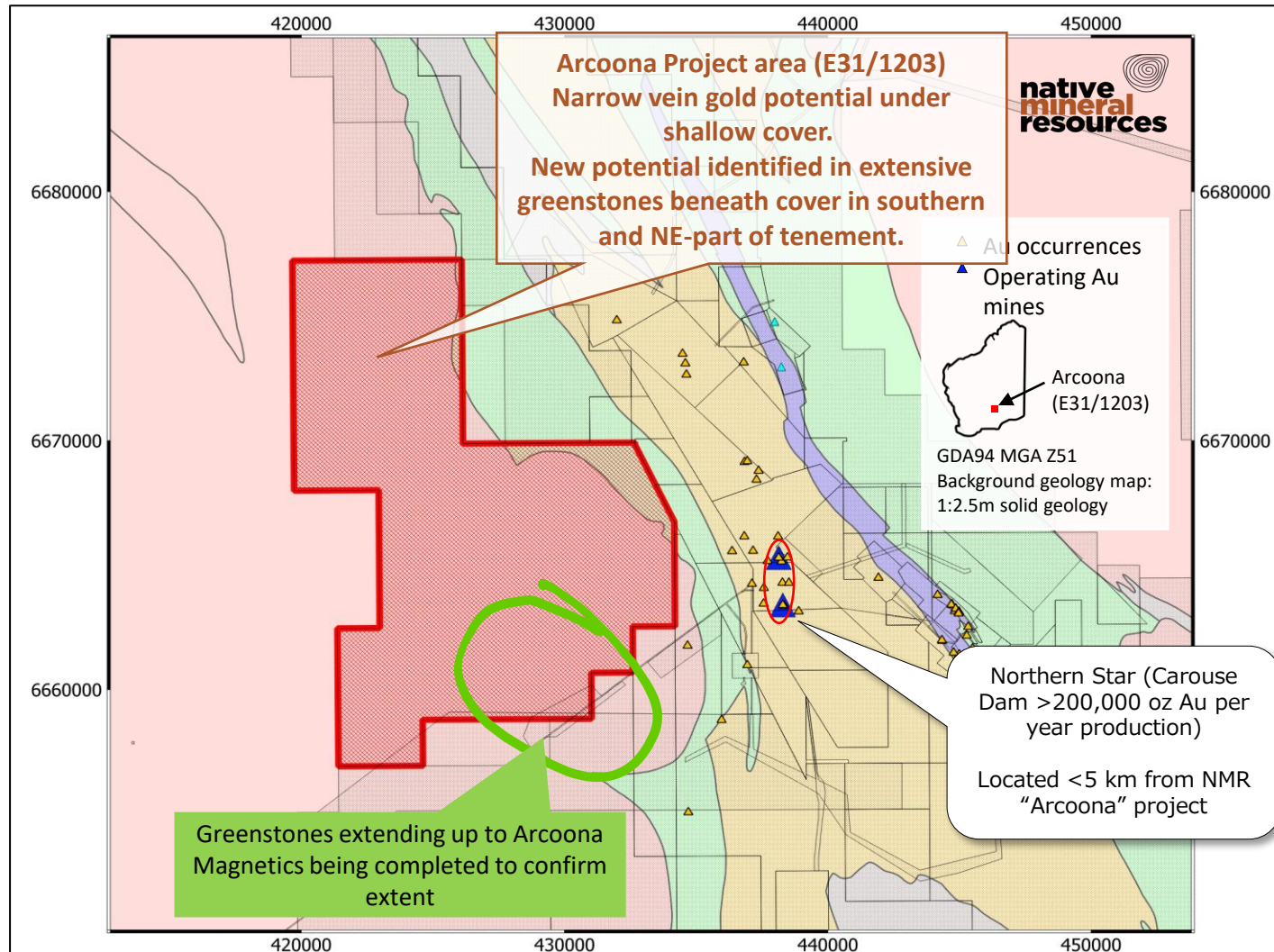
- Gold-bearing veins already discovered + gold anomalies across the project identified for immediate follow up.
- NMR just completed a high-resolution airborne (fixed wing) magnetics survey over E37/1363 with outstanding results.
- Further field-based sampling on both tenements set to follow up existing results.
- Targets generated during magnetics survey will be prioritised for field work (vegetation sampling)
- Gold targets on E37/1363 lie along the eastern extensions of the same structures that host gold mines. Extremely prospective for significant high grade, narrow vein gold.





# Eastern Goldfields Project WA

## Arcoona: Gold, Cobalt, Nickel Targets



- NEW OPPORTUNITIES ARISING FROM NEW DATA - Greenstones (main gold bearing rocks of the Yilgarn) extending into tenement!
- PROVEN Au ANOMALIES (soil) IN UNDER EXPLORED TERRAIN –
- ADJACENT TO MAJOR GOLD DEPOSITS - Surrounded by tenements held by large mining companies including Northern Stars Carouse Dam gold mine (ex Saracen) located only 5km to the east.

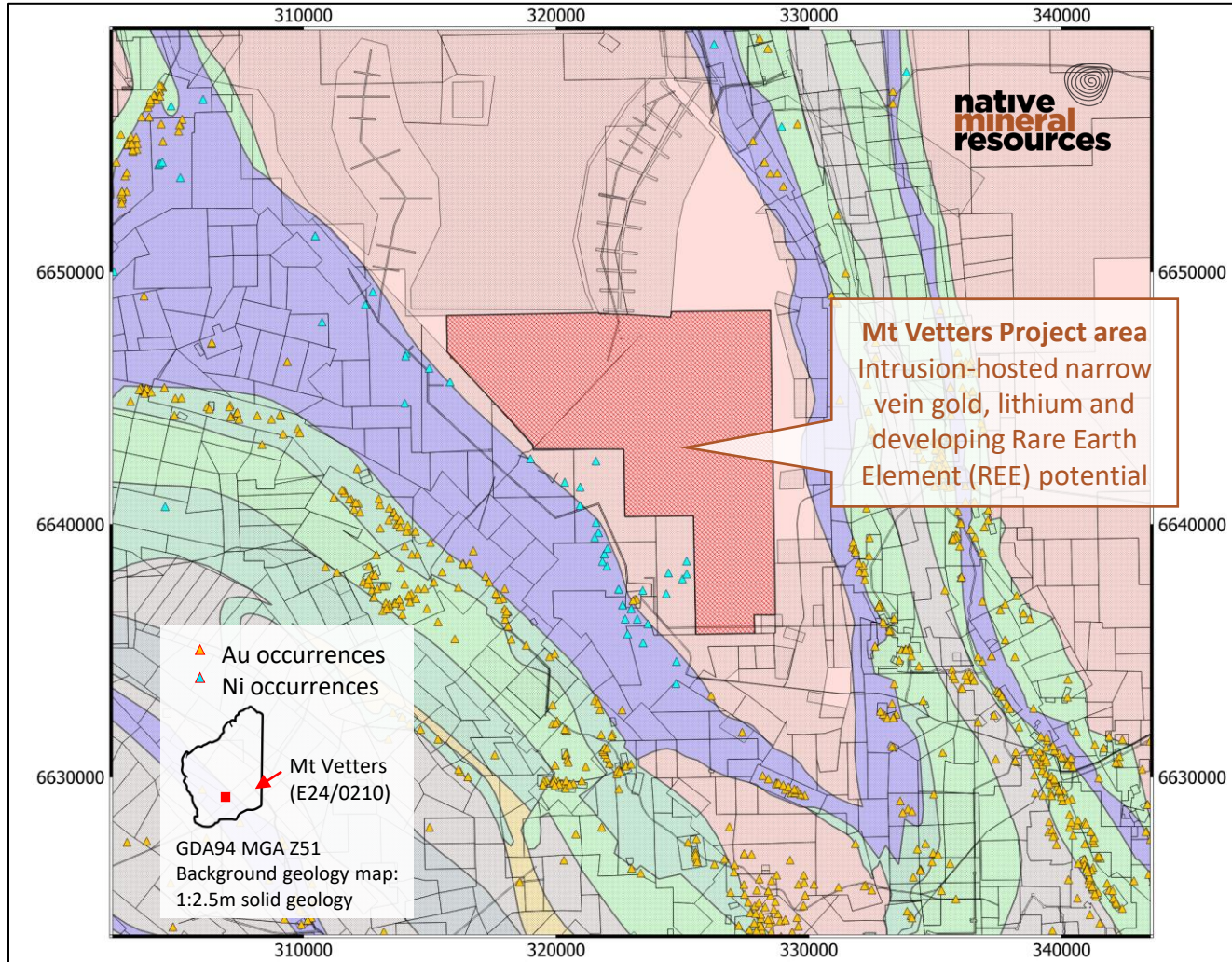
### Outlook for 2023

- Soil sampling over key areas completed – QAQC on assays underway
- High resolution airborne magnetics survey completed
- Further drilling and sample assays will be used to zoom-in on potential zone of mineralisation - NMR have already identified many targets on Arcoona that have previously been overlooked.



# Eastern Goldfields Project WA

## Mt Vettters: Gold, Nickel and REE



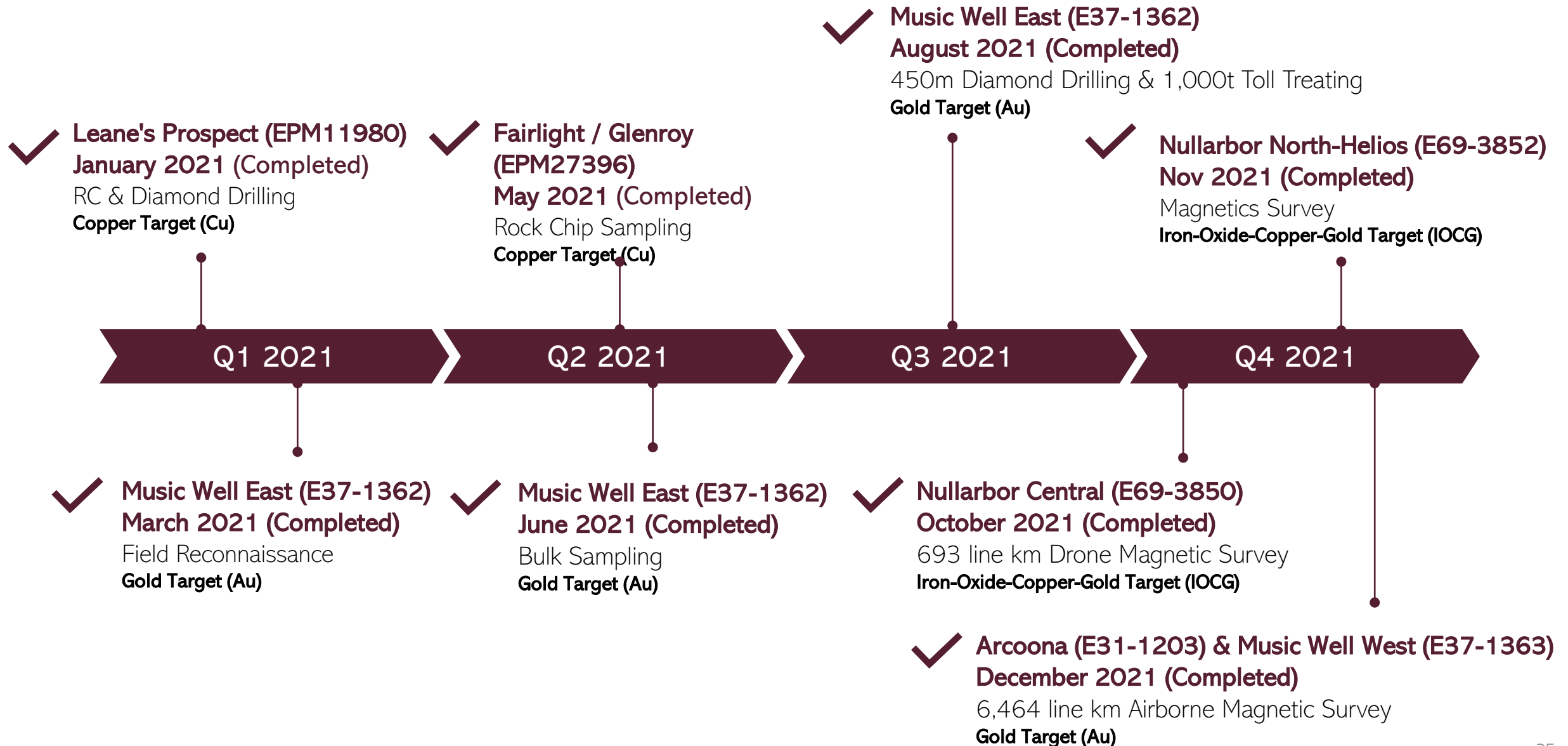
- Mt Vettters lies adjacent to multiple Ni mines and in an area prospective for granite hosted Gold
- Also prospective for Rare Earth Elements (REE)
- Field campaign to start in early 2023 to identify Au and REE prospectivity.
- The tenement is close to Kalgoorlie, the heart of mining country in the Yilgarn.

### Outlook for 2023

- Soil sampling and cutting-edge geochemical analysis to help identify anomalous Ni and/or REE under shallow cover.
- Follow-up drilling to basement to estimate thickness and extent of potential mineralisation.
- After pinpointing any high-grade anomalous REE or Ni geochemistry, NMR will undertake a more comprehensive drilling campaign to help define a potential resource close to Kalgoorlie.



# Works Completed



# 2022 Work Program Summary





# Disclaimer


In preparing this information Native Mineral Resources did not take into account the investment objectives, financial situation and particular needs of the individual investors. Before making an investment decision on the basis of this information, the investor needs to consider, with or without the assistance of a financial advisor, whether the investment is appropriate in light of their particular investment needs, objectives and financial circumstances.

## Forward Looking Statements

Native Mineral Resources has prepared this presentation based on information available to it. No representation or warranty, express or implied, is made as to the fairness, accuracy, completeness or correctness of the information, opinions and conclusions contained in this announcement. To the maximum extent permitted by law, none of Native Mineral Resources, its directors, employees or agents, advisers, nor any other person accepts any liability, including, without limitation, any liability arising from fault or negligence on the part of any of them or any other person, for any loss arising from the use of this announcement or its contents or otherwise arising in connection with it. The information contained within this document is not an offer, invitation, solicitation or other recommendation with respect to the subscription for, purchase or sale of any security, and neither this announcement nor anything in it shall form the basis of any contract or commitment whatsoever. This announcement may contain speculative and forward-looking statements that are subject to risk factors associated with the exploration for gold, copper, nickel and other minerals and metals, mining and production businesses. It is believed that the expectations reflected in these statements are reasonable but they may be affected by a variety of variables and changes in underlying assumptions which could cause actual results or trends to differ materially, including but not limited to price fluctuations, actual demand, currency fluctuations, drilling and production results, Resource or Reserve estimations, loss of market, industry competition, environmental risks, physical risks, legislative, fiscal and regulatory changes, economic and financial market conditions in various countries and regions, political risks, project delay or advancement, approvals and cost estimates. The information in this document relates to, and contains extracts and modified figures from, previous ASX public announcements made by Native Mineral Resources. Native Mineral Resources confirms that it is not aware of any new information or data that materially affects the information included in the in the following presentation and that all material assumptions and technical parameters underpinning the information provided continue to apply and have not materially changed. No reference to Resource or Reserves are presented and all projects are exploration phase only.

Authorised to release to the ASX by Mr. Blake Cannavo, CEO.



 +61 2 6583 7833

 [info@nmresources.com.au](mailto:info@nmresources.com.au)

 [www.nmresources.com.au](http://www.nmresources.com.au)

## CONTACT

**Blake Cannavo**

Managing Director & CEO

Tel: +61 457 777 880

Email: [blake@nmresources.com.au](mailto:blake@nmresources.com.au)

## NEW SOUTH WALES

Suite 10, 6-14 Clarence St,  
Port Macquarie, NSW 2444



# Appendice 1: Tenement Schedule

Location	Tenement ID	Tenement Name	Sub-Block (Sqkm)	Key Commodity	Status
Nullarbor, WA	E69/3852	Northern Nullarbor (Helios)	41 (114.8)	Au, Cu (IOCG)	Granted, 100% NMR Owned
Nullarbor, WA	E69/3850	Central Nullarbor	26 (72.8)	Au, Cu (IOCG)	
Nullarbor, WA	E69/3849	South Nullarbor	25 (70)	Au, Cu (IOCG)	
Maneater Hill, QLD	28038	Maneater Hill	19 (62.51)	Cu, Au, Ag, Pb	
Palmerville, QLD	11980	Limestone Creek	4 (13.2)	Cu, Au	
Palmerville, QLD	18325	Bald Hills	15 (49.4)	Cu, Au	
Palmerville, QLD	19537	Mitchell River South	33 (108.6)	Cu, Au	
Palmerville, QLD	26891	Palmerville North	63 (207.27)	Cu, Au	
Palmerville, QLD	26893	Palmerville West	100 (329)	Cu, Au	
Palmerville, QLD	26894	Palmerville East	84 (276.36)	Cu, Au	
Palmerville, QLD	26895	Palmerville South	63 (292.81)	Cu, Au	
Palmerville, QLD	27396	East Palmerville North	100 (329)	Cu, Au	
Palmerville, QLD	27452	East Palmerville South	65 (213.85)	Cu, Au	
Eastern Goldfields, WA	E37/1362	Music Well	58 (162)	Au, Li	
Eastern Goldfields, WA	E37/1363	Music Well	39 (109)	Au, Li	
Eastern Goldfields, WA	E31/1203	Arcoona	61 (171)	Ni, Au, Li, REE	Pending Grant In Application Mar 22
Eastern Goldfields, WA	E24/210	Mt Vettors	35 (98)	Ni, Au, Li, REE	
Nullarbor, WA	E69/4035	Mundra East	196 (TBA)	Au, Cu (IOCG)	
Nullarbor, WA	E69/4036	Mundra West	151 (TBA)	Au, Cu (IOCG)	
TOTAL			2,679.60 km <sup>2</sup>		