

Estelle Gold Project – 3D Interactive Model

First 3D interactive model and 360 degree photo site tour of the Estelle Gold Project has been released and is available for viewing on the Company's website

Nova Minerals Limited (Nova or the Company) (ASX: NVA, OTC: NVAAF, FSE: QM3) is pleased to advise that the Company's first 3D interactive geoscientific model and 360 degree photo site tour of the Estelle Gold Project, situated on the Estelle Gold Trend in Alaska's prolific Tintina Gold Belt, has now been released.

The 3D interactive model is hosted using the Vrifly Technology Platform and includes details of the Estelle Gold Project's location, topography, drilling, pit designs, resource models, surface geological samples and the proposed processing plant and infrastructure as detailed in the Scoping Study released earlier this year. The Vrifly platform allows users to view all aspects of the Company's Estelle Gold Project through an intuitive and fully interactive 3D interface.

The 360 degree photo site tour provides an interactive birds eye view of the main areas of the Company's Estelle Gold Project.

Both the 3D interactive model and 360 degree photo site tour can be accessed through the home page, and smaller decks on other pages, on the Company's website www.novaminerals.com.au/



Figure 1. Image of the 3D interactive model for the Estelle Gold Project on the Company's website



Figure 2. Image of the 360 degree photo site tour for the Estelle Gold Project on the Company's website

For further information regarding Nova Minerals Limited please visit the Company's website www.novaminerals.com.au

This announcement has been authorized for release by the Executive Directors.

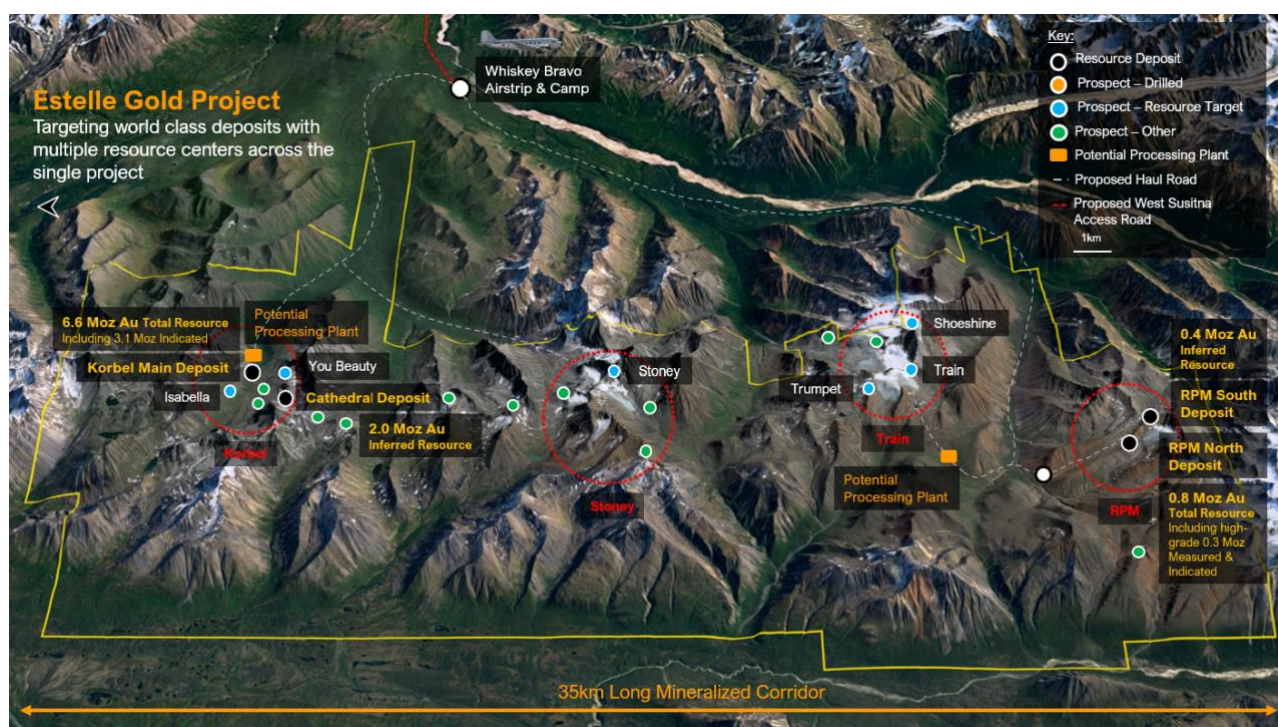
Christopher Gerteisen
CEO and Executive Director
E: info@novaminerals.com.au

Craig Bentley
Director of Finance & Compliance
& Investor Relations
E: craig@novaminerals.com.au
M: +61 414 714 196

About Nova Minerals

Nova Minerals Limited (ASX: NVA) vision is developing North America's next major gold trend, Estelle, to become a world class, tier-one, global gold producer. Its flagship Estelle Gold Project contains multiple mining resources across a 35km long mineralized corridor of over 20 identified gold prospects, including two already defined multi-million ounce resources across 4 deposits containing a combined 9.9 Moz Au. The project is situated on the Estelle Gold Trend in Alaska's prolific Tintina Gold Belt, a province which hosts a 220 million ounce (Moz) documented gold endowment and some of the world's largest gold mines and discoveries including Victoria Gold's Eagle Mine and Kinross Gold Corporation's Fort Knox Gold Mine.

Additionally, Nova holds a substantial 37% interest in NASDAQ-listed lithium explorer Snow Lake Resources Ltd (NASDAQ: LITM), an 8.76% holding in Asra Minerals Limited (ASX: ASR), a gold and rare earths exploration company based in Western Australia, and a 9.9% interest in privately owned RotorX Aircraft Manufacturing (www.rotorxaircraft.com/evtol/) who are seeking to list in the USA in the near future.



Cautionary Note Regarding Forward-Looking Statements

This news release contains “forward-looking information” within the meaning of applicable securities laws. Generally, any statements that are not historical facts may contain forward-looking information, and forward looking information can be identified by the use of forward-looking terminology such as “plans”, “expects” or “does not expect”, “is expected”, “budget” “scheduled”, “estimates”, “forecasts”, “intends”, “anticipates” or “does not anticipate”, or “believes”, or variations of such words and phrases or indicates that certain actions, events or results “may”, “could”, “would”, “might” or “will be” taken, “occur” or “be achieved.” Forward-looking information is based on certain factors and assumptions management believes to be reasonable at the time such statements are made, including but not limited to, continued exploration activities, Gold and other metal prices, the estimation of initial and sustaining capital requirements, the estimation of labor costs, the estimation of mineral reserves and resources, assumptions with respect to currency fluctuations, the timing and amount of future exploration and development expenditures, receipt of required regulatory approvals, the availability of necessary financing for the Project, permitting and such other assumptions and factors as set out herein. apparent inconsistencies in the figures shown in the MRE are due to rounding

Forward-looking information is subject to known and unknown risks, uncertainties and other factors that may cause the actual results, level of activity, performance or achievements of the Company to be materially different from those expressed or implied by such forward-looking information, including but not limited to: risks related to changes in Gold prices; sources and cost of power and water for the Project; the estimation of initial capital requirements; the lack of historical operations; the estimation of labor costs; general global markets and economic conditions; risks associated with exploration of mineral deposits; the estimation of initial targeted mineral resource tonnage and grade for the Project; risks associated with uninsurable risks arising during the course of exploration; risks



associated with currency fluctuations; environmental risks; competition faced in securing experienced personnel; access to adequate infrastructure to support exploration activities; risks associated with changes in the mining regulatory regime governing the Company and the Project; completion of the environmental assessment process; risks related to regulatory and permitting delays; risks related to potential conflicts of interest; the reliance on key personnel; financing, capitalization and liquidity risks including the risk that the financing necessary to fund continued exploration and development activities at the Project may not be available on satisfactory terms, or at all; the risk of potential dilution through the issuance of additional common shares of the Company; the risk of litigation.

Although the Company has attempted to identify important factors that cause results not to be as anticipated, estimated or intended, there can be no assurance that such forward-looking information will prove to be accurate, as actual results and future events could differ materially from those anticipated in such information. Accordingly, readers should not place undue reliance on forward-looking information. Forward looking information is made as of the date of this announcement and the Company does not undertake to update or revise any forward-looking information this is included herein, except in accordance with applicable securities laws

