

Xped Limited



Xped Customer Presentation

Xped Limited (**ASX: XPE**) ("**Xped**" or "**the Company**") is pleased to release the attached Xped Customer presentation for business development and key meetings in Asia and North America.

ABOUT XPED

Xped has developed revolutionary and patent protected technology that allows any consumer, regardless of their technical capability, to connect, monitor and *control devices and appliances found in our everyday environment. It's as simple as two people shaking hands. By enabling the Internet of Things, Xped's ADRC platform will bring benefit to Manufacturers, Retailers, Service Providers and Consumers.*

*At Xped, we're **Making Technology Easy Again***

FOR MORE INFORMATION:



Contact Xped Limited

ABN 89 122 203 196
Level 6, 412 Collins Street
Melbourne VIC 3000

T 03 9642 0655
F 03 9642 5177
E info@xped.com
www.xped.com

CORPORATE ENQUIRIES:

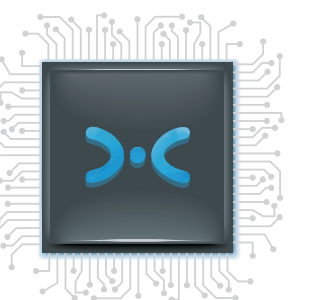
Cameron Low
T +61 3 9245 6206
E ir@xped.com



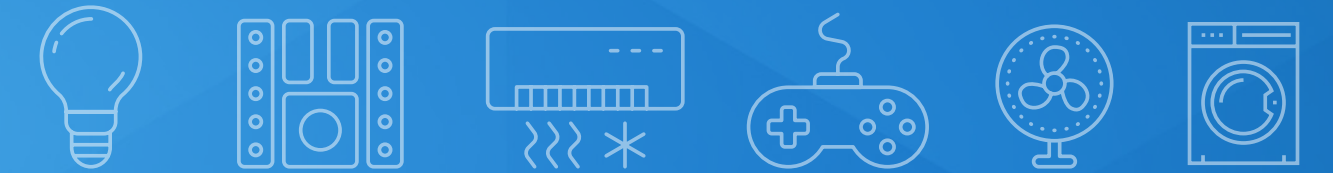
Xped Customer Presentation

XPED CUSTOMER PRESENTATION
VERSION 1.0 // DECEMBER 2016

xped



DISCLAIMER



This presentation is not a prospectus nor an offer for securities in any jurisdiction nor a securities recommendation. The information in this presentation is an overview, is based on publicly available information and internally developed data, and does not contain all information necessary for investment decisions. In making investment decisions in connection with any acquisition of securities, investors should rely upon their own examination of the assets and consult their own legal, business and/or financial advisors and should not be relied on in connection with a decision to purchase or sell for any securities.

The information contained in this presentation has been prepared in good faith by Xped Limited however no representation nor warranty expressed or implied is made as to the accuracy, correctness, completeness or adequacy of any statements, estimates, opinions or other information contained in this presentation.

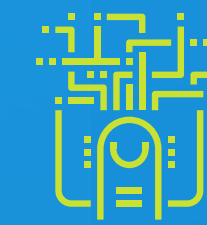
To the maximum extent permitted by law, Xped Limited their directors, officers, employees and agents disclaim liability for any loss or damage which may be suffered by any person through the use or reliance on anything contained in or omitted from this presentation. Certain information in this presentation refers to the intentions of Xped Limited but these are not intended to be forecasts, forward looking statements or statements about future matters for the purposes of the Corporations Act or any other applicable law.

The occurrence of events in the future are subject to risks, uncertainties and other factors that may impact Xped Limited actual results, performance or achievements to differ from those referred to in this presentation. Accordingly, Xped Limited, their directors, officers, employees and agents do not give any assurance or guarantee that the occurrence of the events referred to in this presentation will actually occur as contemplated.

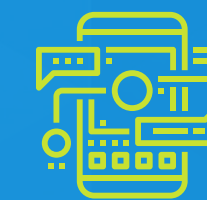
WHO IS XPED?



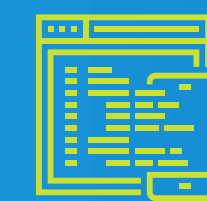
Xped is a technology and solutions provider that is focused on IoT infrastructure. By enabling the Internet of Things, Xped's Infrastructure Platform (XIP) will bring benefits to manufacturers, retailers, service providers and consumers.



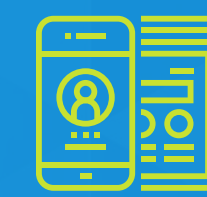
Tap: Device discovery, provisioning and interoperability



Xped App: Device browser that delivers command and control to the end user

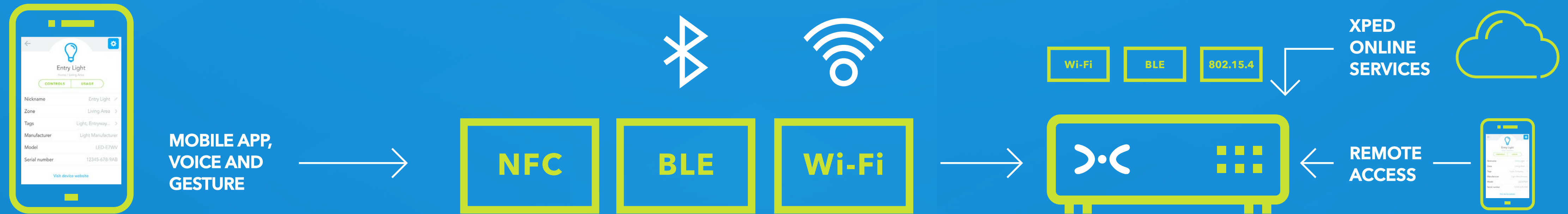
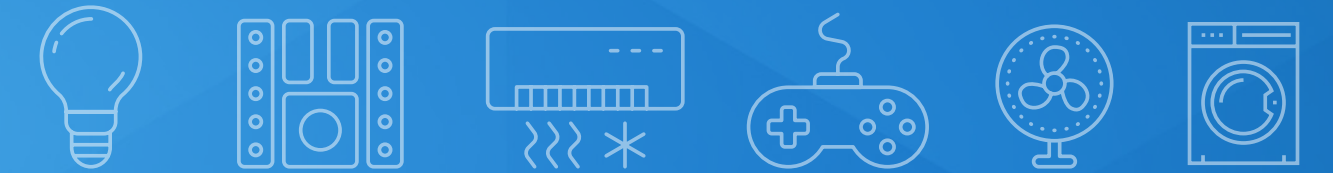


RML: Device description language based on XML



Gateway software: Business logic, rules engine, notifications and device management solutions

XIP: COMPONENTS



User Interface

Xped App: Device browser that delivers command and control to the end user

Local Device Discovery

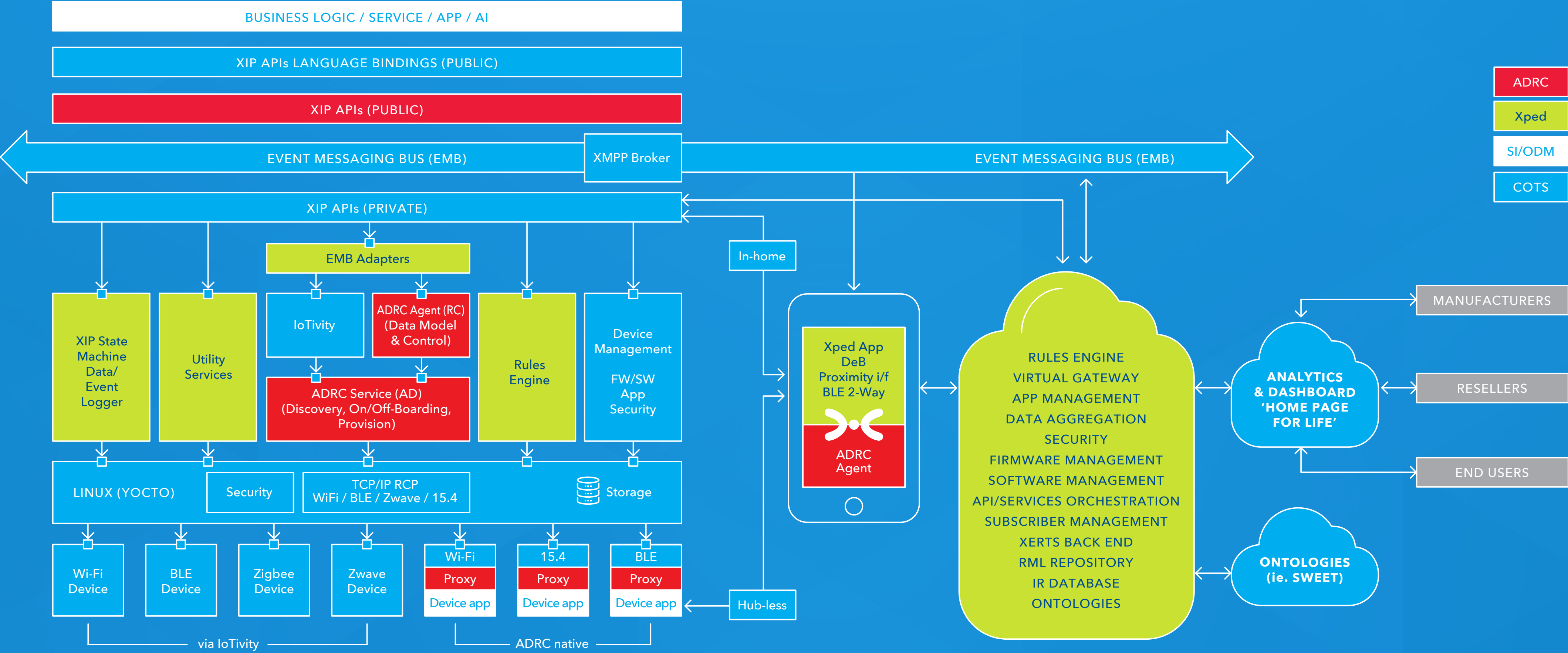
Tap: Device discovery, provisioning and interoperability

Xped IoT Gateway

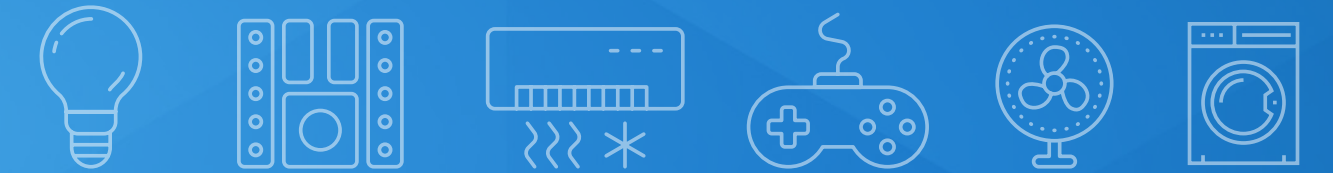
Gateway Software: Business logic, rules engine, notifications and device management solution

RML: Device description language based on XML

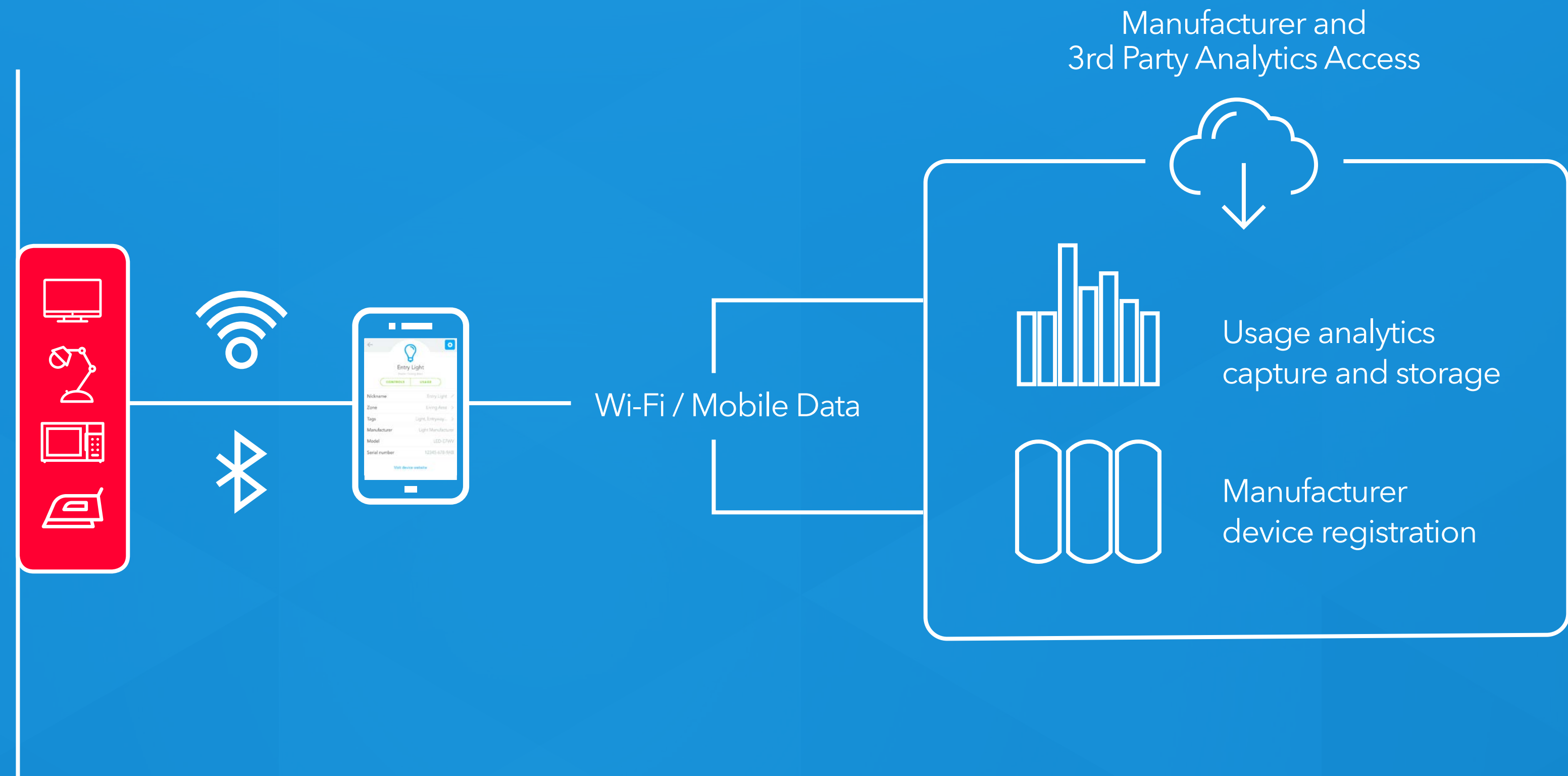
XPED INFRASTRUCTURE PLATFORM



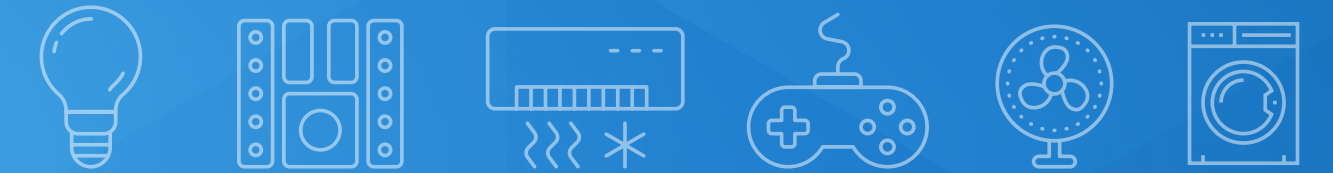
XIP LITE: VIRTUAL GATEWAY



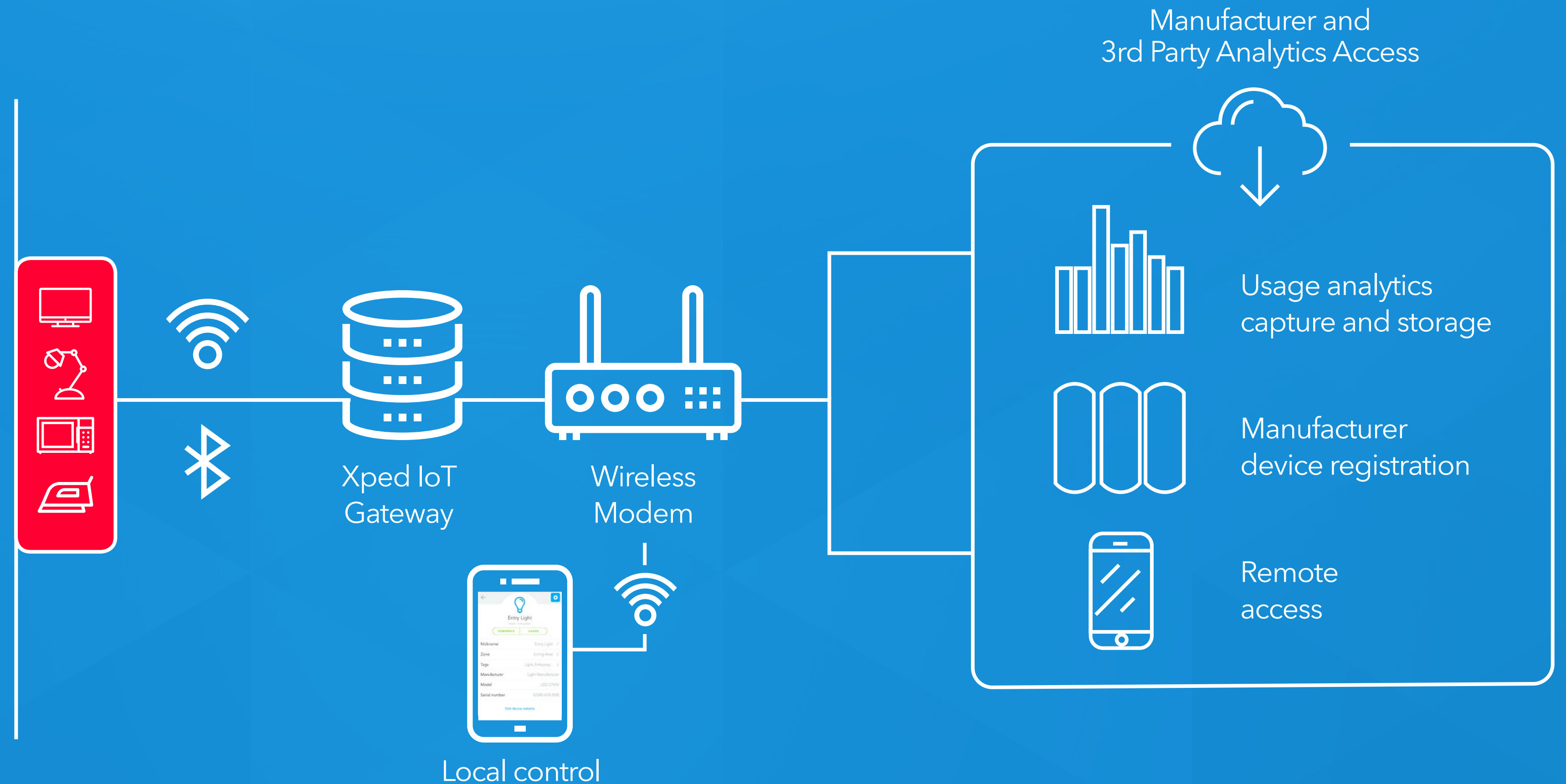
- > ADRC Compliant WiFi/BLE Devices
- > RML Translation WiFi/BLE Devices
- > Home Health and Smart Home IoT/Android Apps
- > Freemium Model



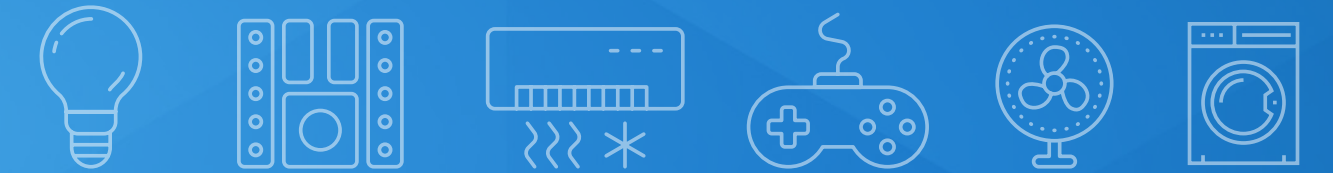
XIP: GATEWAY SOLUTIONS



- > Device support
 - 802.15.4/WiFi/BLE
 - ADRC Compliant
 - Iotivity Compliant
 - RML Translation
- > Use Cases
 - Home Health
 - Pro Health
 - Data Centers
 - Smart Home
- > License Fee with Maintenance



XIP: HOME PAGE FOR LIFE



XIP will aggregate all aspects of your home or business life:

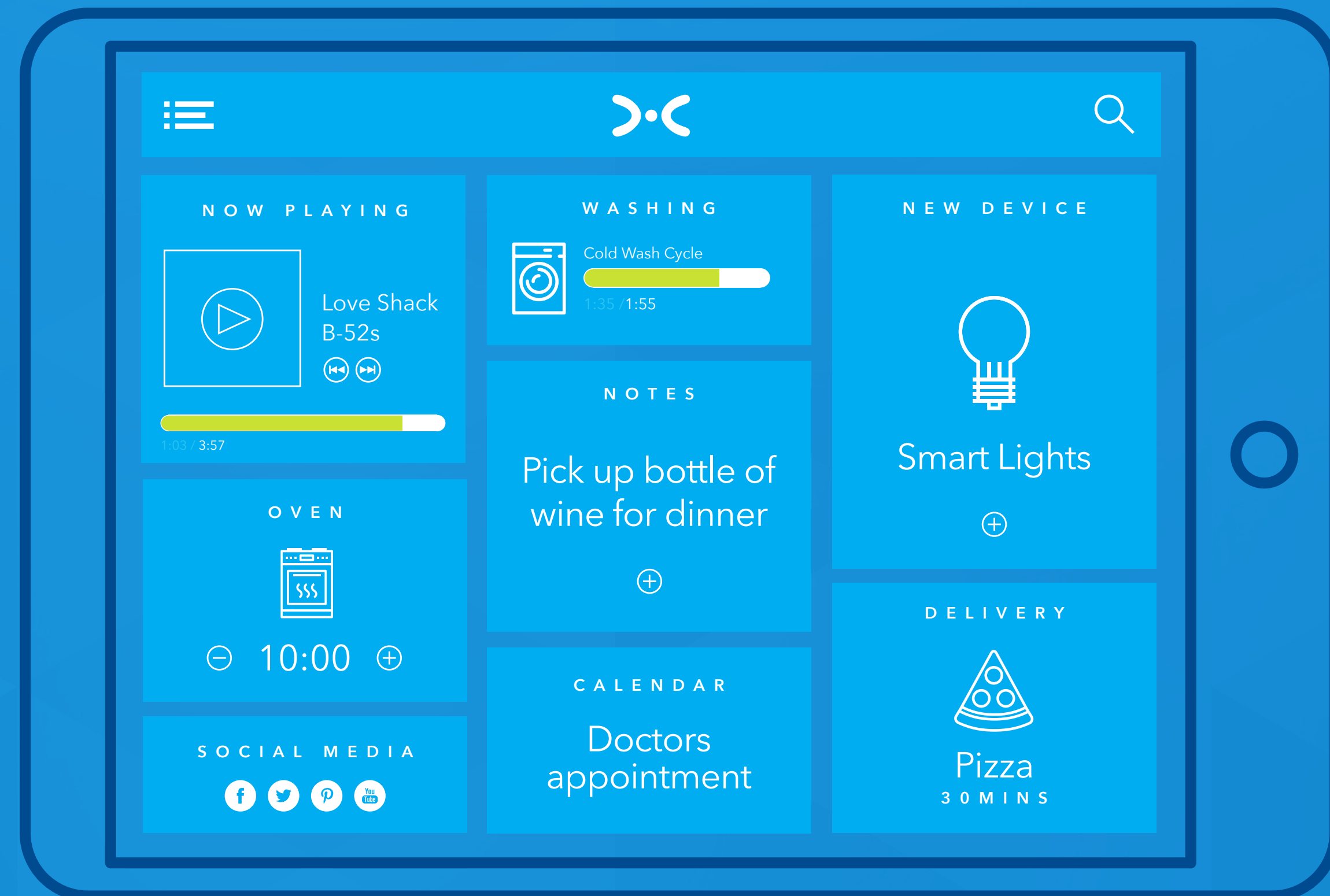
Automation

Security

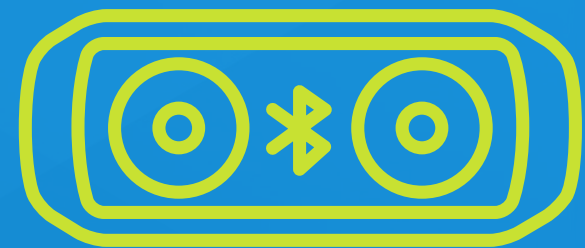
Communication

Schedule

Shopping



XIP GATEWAY PLATFORMS



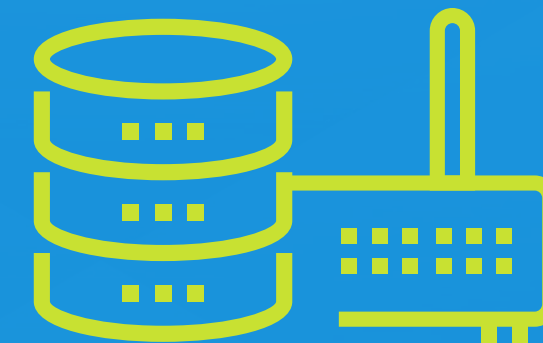
Smart Speaker

- > WiFi/BLE/15.4
- > Env. Sensors
- > Camera
- > Premium Speaker
- > 6+2 Mic Array



Consumer Gateway

- > WiFi/BLE/15.4
- > RJ45
- > USB 2.0
- > Cellular
- > Z-Wave Optional



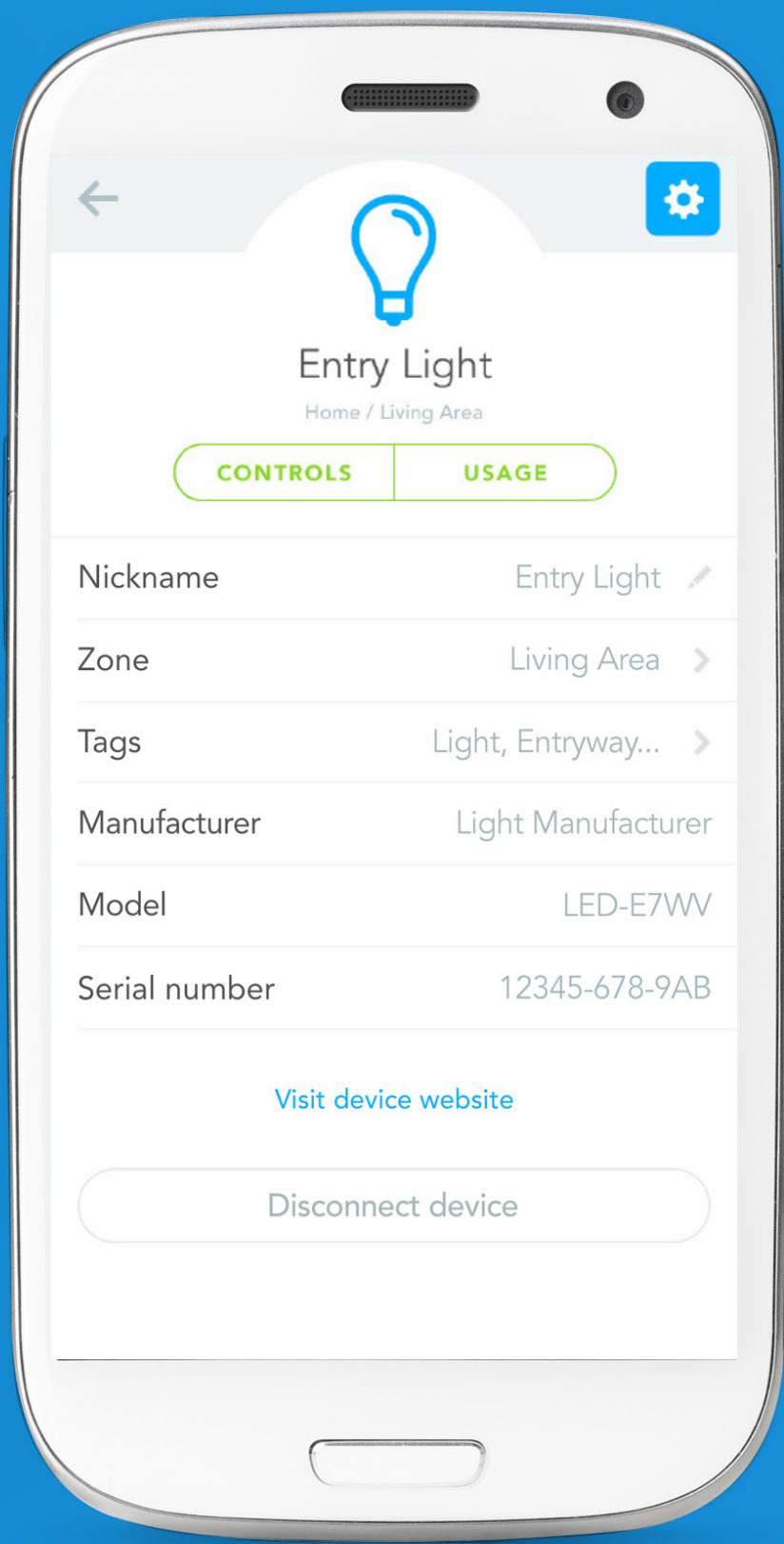
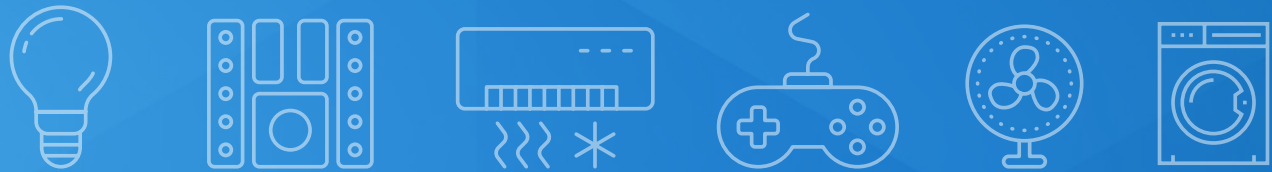
Industrial Gateway

- > 1 x UART
- > 4 x GPIO
- > 1 x Mini PCIe
- > 2 x 10/100 Ethernet
- > Wall Mount / DIN rails

Targeted Use Cases:

- > Home Health
- > Pro Health
- > Data Centers
- > Smart Home
- > Smart Building

VIRTUAL GATEWAY



Home Health

Uses Cases:

- > Vitals Tracking
- > Activity Tracking
 - Movement
 - Diet

Devices:

- > Blood Pressure
- > Blood Sugar
- > Scale
- > PIR Sensors
- > Wrist band
 - Heart Rate
 - Activity
- > Contact Sensors
- > Smart Pill Box

Smart Home

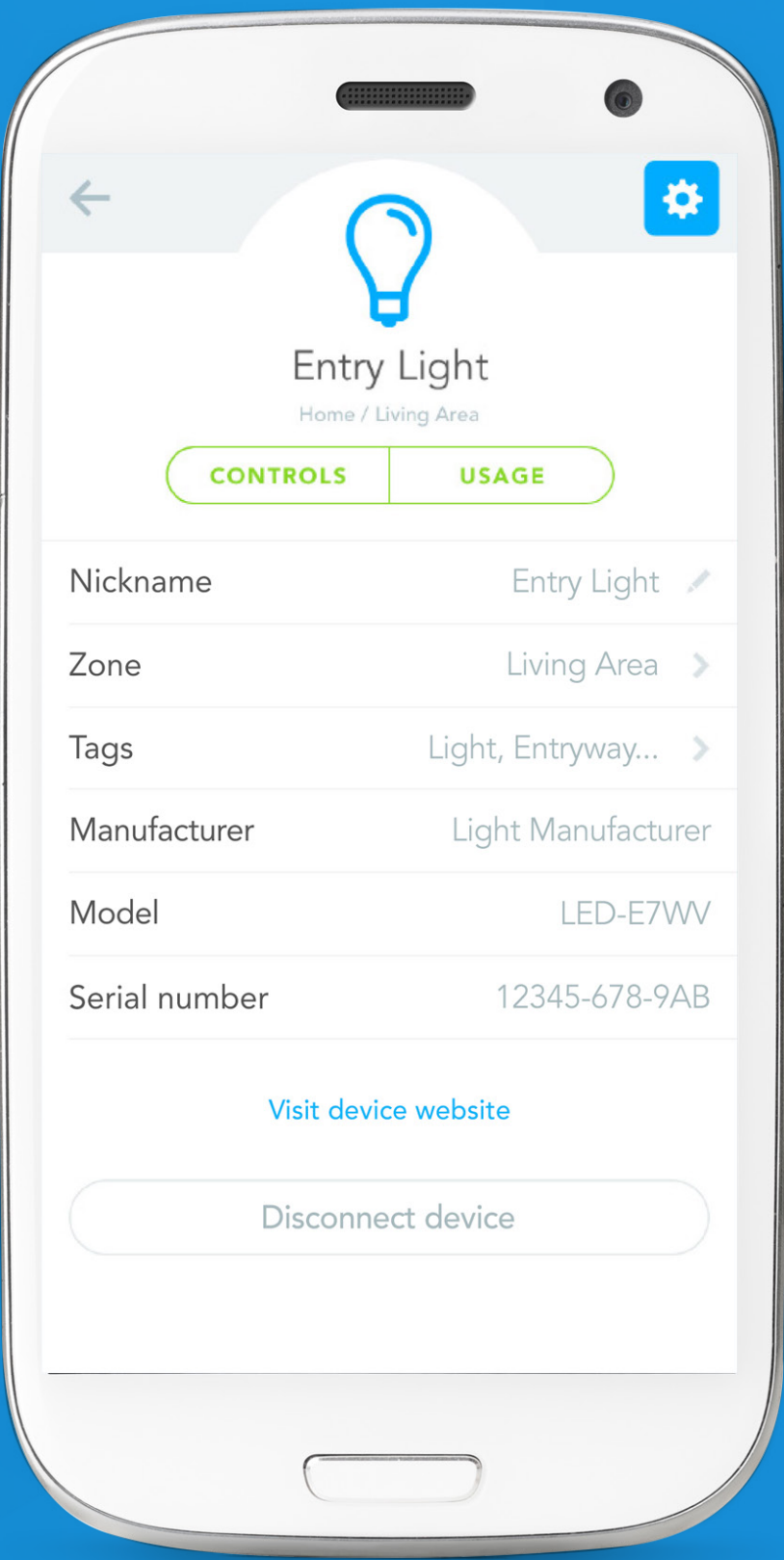
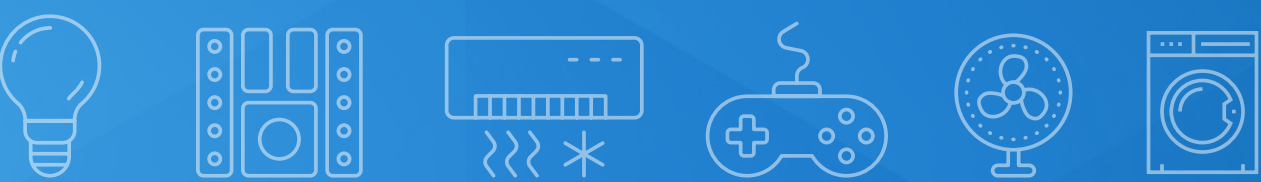
Uses Cases:

- > Automation
- > Entertainment

Devices:

- > PIR Sensors
- > Contact Sensors
- > Lighting
- > Smart Plugs
- > IP Camera
- > Door Intercom
- > Smart Locks
- > IR Blaster
- > Thermostat
- > Appliances

CONSUMER GATEWAY



Home Health

Uses Cases:

- > Vitals Tracking
- > Activity Tracking
 - Movement
 - Diet
 - Medicine
- > Environment

Devices:

- > Blood Pressure
- > Blood Sugar
- > Scale
- > Pendant
- > Wrist band - Heart Rate / Activity
- > PIR Sensors
- > Contact Sensors
- > Env. Sensors - Temperature / Humidity / pm2.5
- > IP Camera

Smart Home

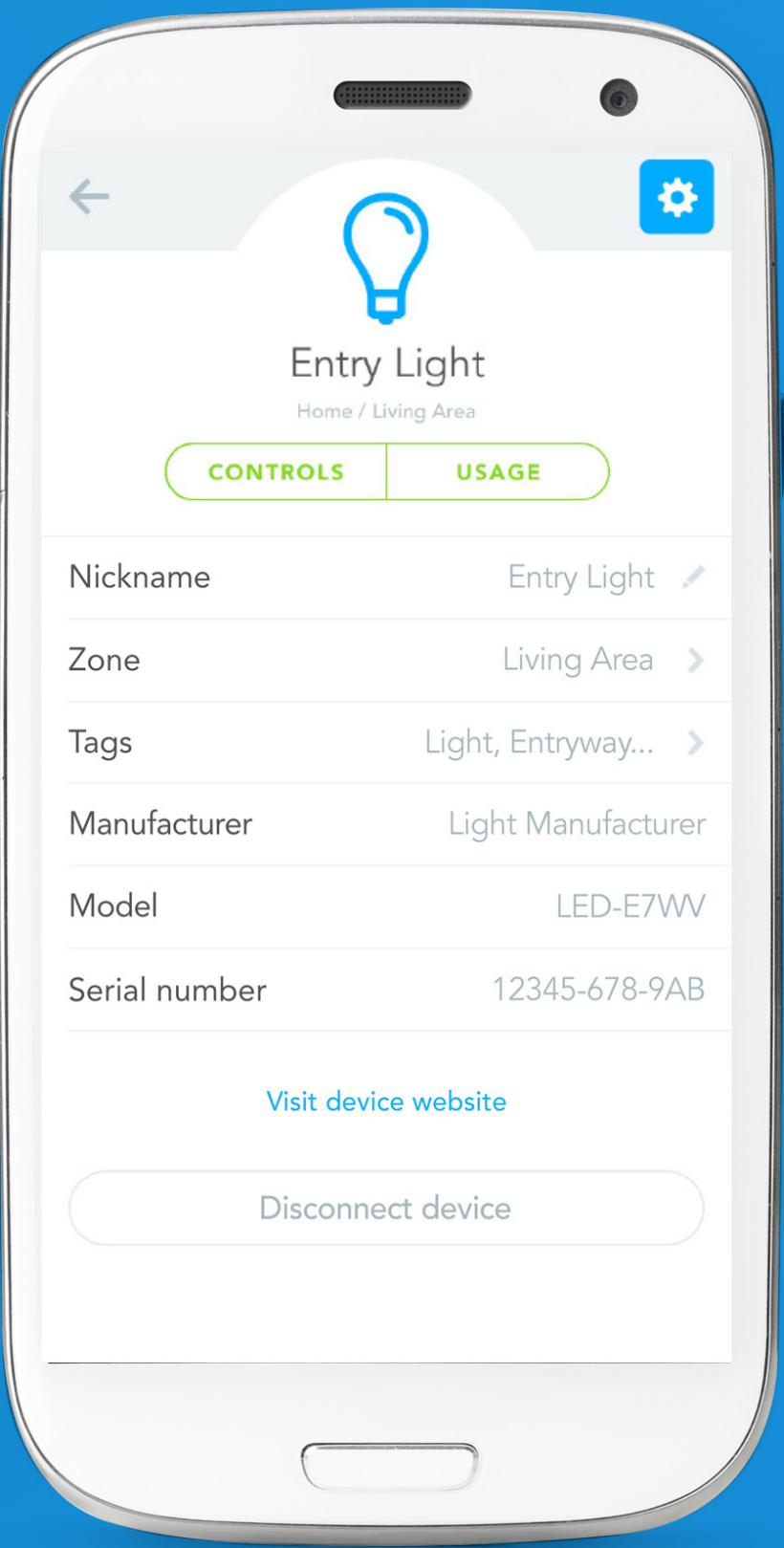
Uses Cases:

- > Automation
- > Energy Management
- > Security / Monitoring
- > Entertainment
- > Environment

Devices:

- > PIR Sensors
- > Contact Sensors
- > Lighting
- > Smart Plugs
- > Smart Switches
- > Circuit / Clamp
- > IP Camera
- > Door Intercom
- > Smoke / CO2
- > Smart Locks
- > IR Blaster

ENTERPRISE GATEWAY



Pro Health

Uses Cases:

- | | |
|--|---------------------|
| > Vitals Tracking | > Energy Management |
| > Activity Tracking <ul style="list-style-type: none">- Movement- Diet- Medicine | > Security |
| > Care-giver Activity | > Monitoring |
| > Tracking <ul style="list-style-type: none">- Location- Assignments | > Entertainment |
| > Automation | > Environments |

Devices:

- | | | |
|--|--|--------------------|
| > Blood Pressure | > Environmental Sensors <ul style="list-style-type: none">- Temperature- Humidity- pm2.5 | > Door Intercom |
| > Blood Sugar | > SIP Camera | > Smoke / CO2 |
| > Scale | > Smart Latch | > Smart Locks |
| > Pendant | > Lighting | > IR Blaster |
| > Wrist band <ul style="list-style-type: none">- Heart Rate- Activity | > Smart Plugs | > Thermostat |
| > PIR Sensors | > Smart Switch | > Moisture Sensors |
| > Contact Sensors | > Circuit / Clamp | > Appliances |
| > Smart Pill Box | | |

DISCOVERY HUB



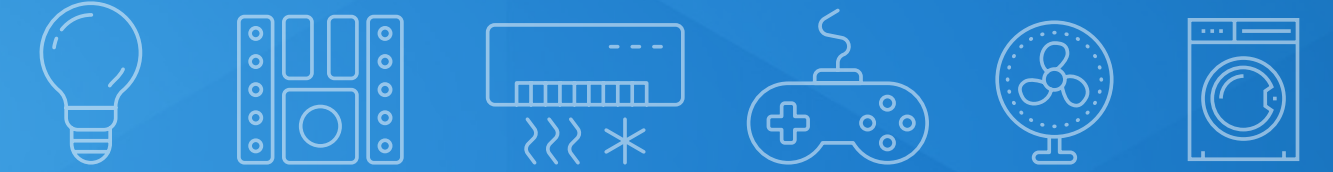
The Discover Bus™ system allows nodes to be connected to a hub over a daisy-chain wired CAN Bus transport layer. Nodes are added by simply plugging them into a hub or each other and immediately become available for control via the device browser app running on a smartphone or tablet.

HW Components:

- > Gateway
- > Discover Hub
- > Nodes
- > Sub-Nodes



CURRENT XPED PRODUCTS



UltraPlug

- > Tap
- > On / Off
- > Metering



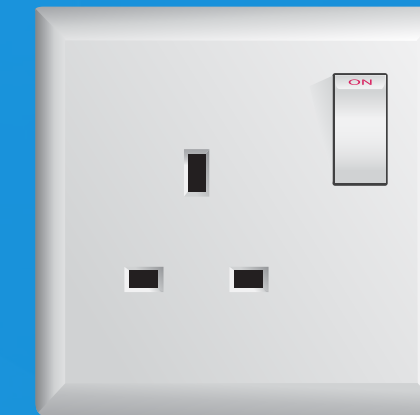
VariPlug

- > Tap
- > On / Off
- > Dimming
- > Metering



IRBlaster

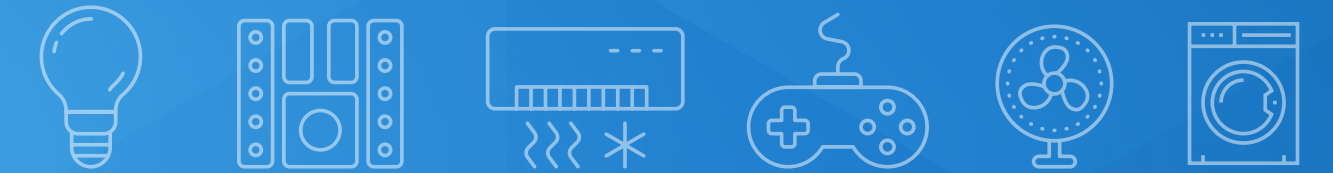
- > Tap
- > Command
- > Control



PowerModules

- > Tap
- > On / Off
- > Metering

THANK YOU



FOR MORE INFORMATION:

Xped Limited

ABN 89 122 203 196
Level 6, 412 Collins Street
Melbourne VIC 3000

T +61 3 9642 0655
F +61 3 9642 5177
E info@xped.com
www.xped.com

CORPORATE ENQUIRIES:

Cadmon Advisory

Cameron Low
T +61 484 008 630
E IR@xped.com

