

# Dart Mining NL Presentation

James Chirnside  
Managing Director  
August 2018



ASX:DTM

# Contents

Corporate Snapshot

Investment Overview

Tenement Locations

Dorchap Dyke Swarm Lithium Project

Other Projects

Work Program

Summary

Disclaimer



# Corporate Snapshot

## Directors & Management

- James Chirnside (Executive Chairman)
- Luke Robinson (Non-Executive Director)
- Dr. Denis Clarke (Non-Executive Director)
- Mr. Russell Simpson (Non-Executive Director)

## Corporate Services

- Audit – Ragg Wier
- Legal – Resources Law
- Accounting & Tax – Lowell Accounting Services
- Registry – Automic Registry Services

## ASX Code: DTM

- Shares on Issue: 856.6 million
- Market Cap: \$6.9 million
- Options on Issue: 419.8 million
- Cash: \$1.7m
- Directors & Management: 7.3%
- Top 20: 44.2%



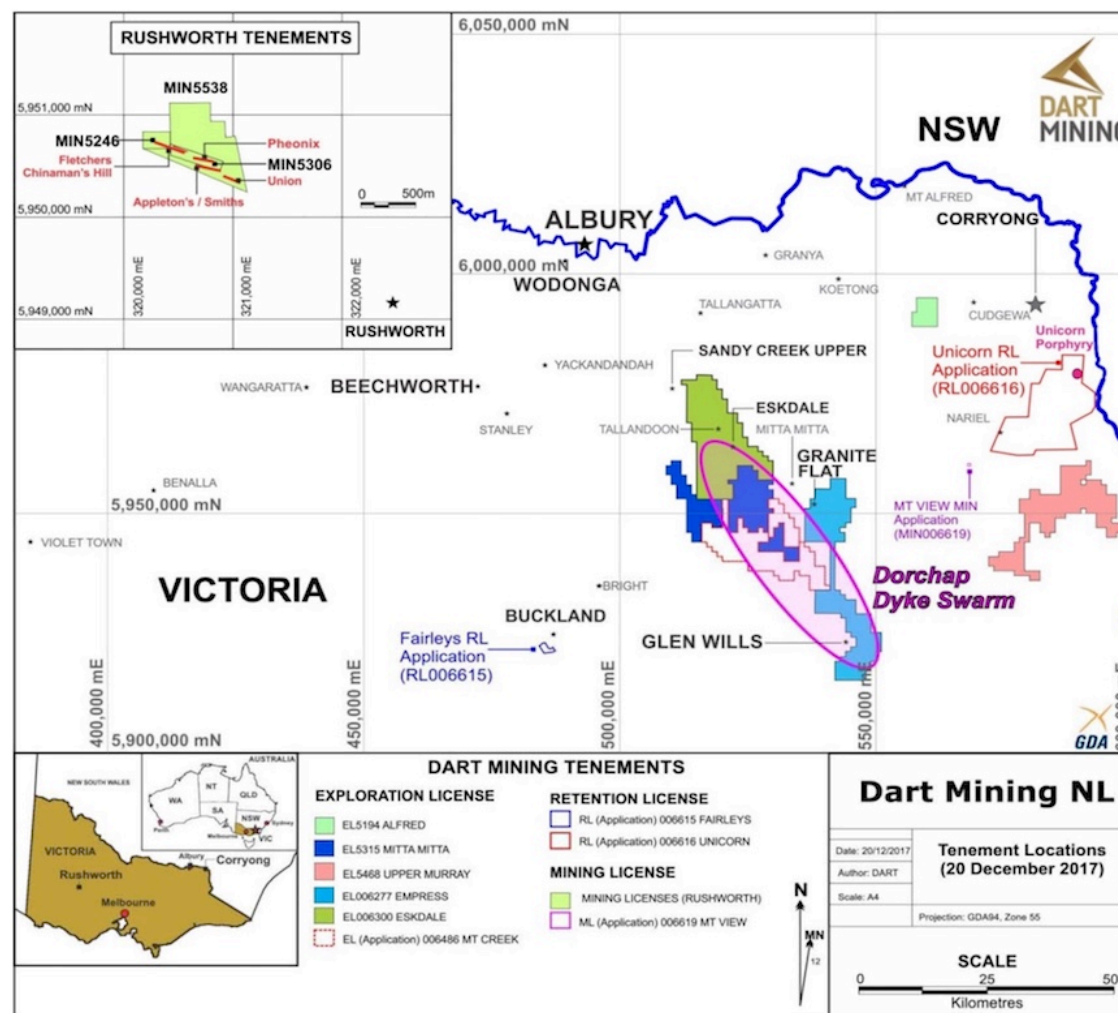
# Investment Overview

- Dart is focused on exploring the Dorchap Dyke Swarm in North Eastern Victoria, targeting Li in LCT pegmatite dykes.
- The region hosts historical Sn mines and workings along pegmatite dykes
- Historical exploration by BHP in 1980's targeted for Sn-Ta deposits
- Prospective tenure with no previous exploration conducted for Lithium
- Numerous dykes with extensive strike, width's and abundant Li minerals in outcrop discovered to date
- Extensive lease-holding also includes Unicorn Mo-Cu-Ag porphyry deposit and Rushworth Gold Project and Mt View Gold Project



# Tenement Location

- Extensive wholly owned exploration tenure
- A total of ~2,500 km<sup>2</sup> held
- Dorchap Dyke Swarm extends from Glen Wills in the south to Eskdale in the north
- Exploration bases in Eskdale and Corryong



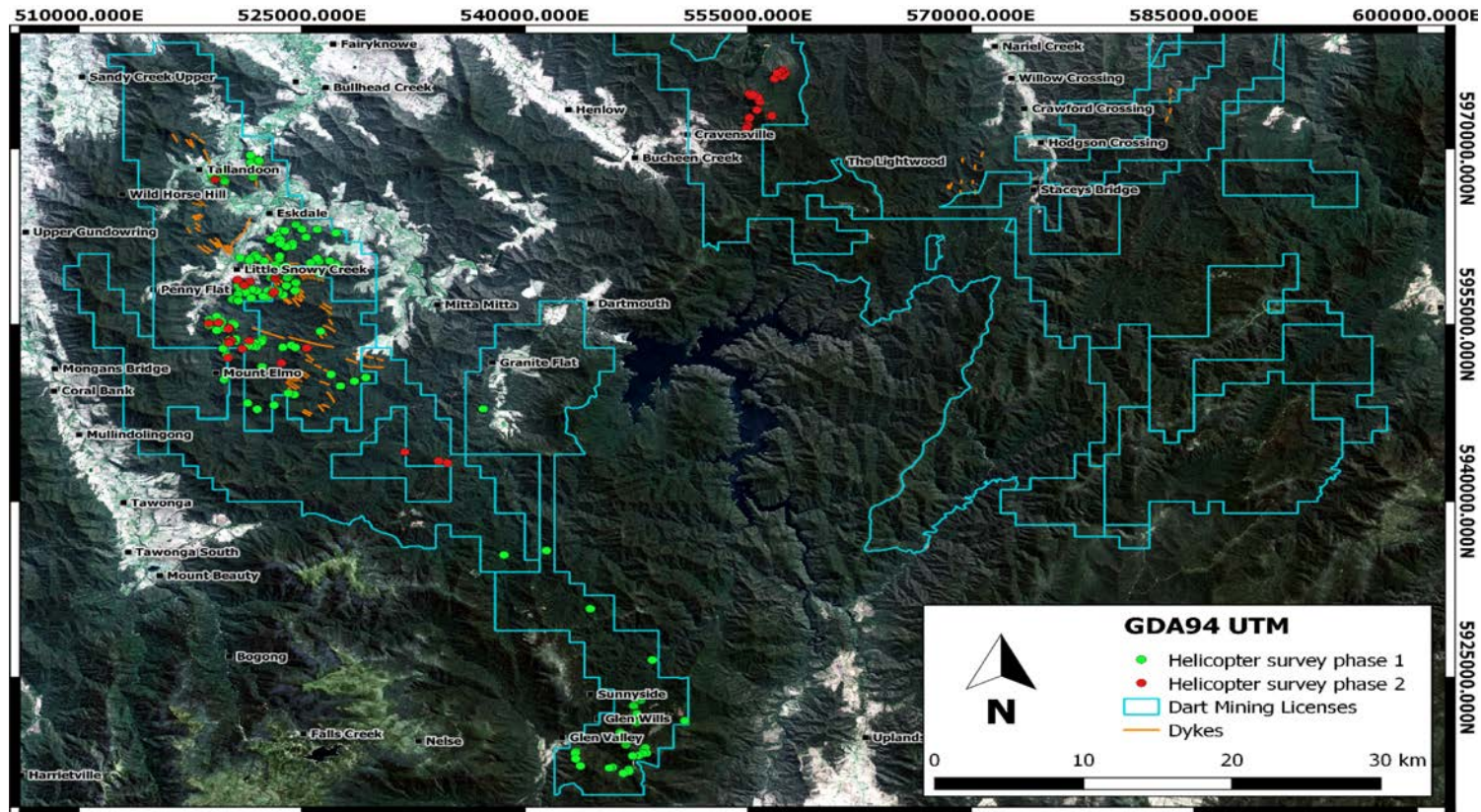
# Dorchap Dyke Swarm Lithium Project

- Focus of Dart's exploration push going forward
- Highly prospective, previously unexplored dyke swarms
- Large parcel of exploration ground secured
- Dart is the first company to explore the Dorchap Dyke Swarm for Lithium
- Use of helicopter survey has successfully identified multiple large target dykes
- Rock chip sampling has identified abundant primary Li minerals, Petalite and Spodumene
- Individual dykes of apparent significant strike length and width identified at Dorchap North – Boones and Gosport prospect areas
- Appointment of geological contracting and consultancy group RSC to expand and fast track exploration





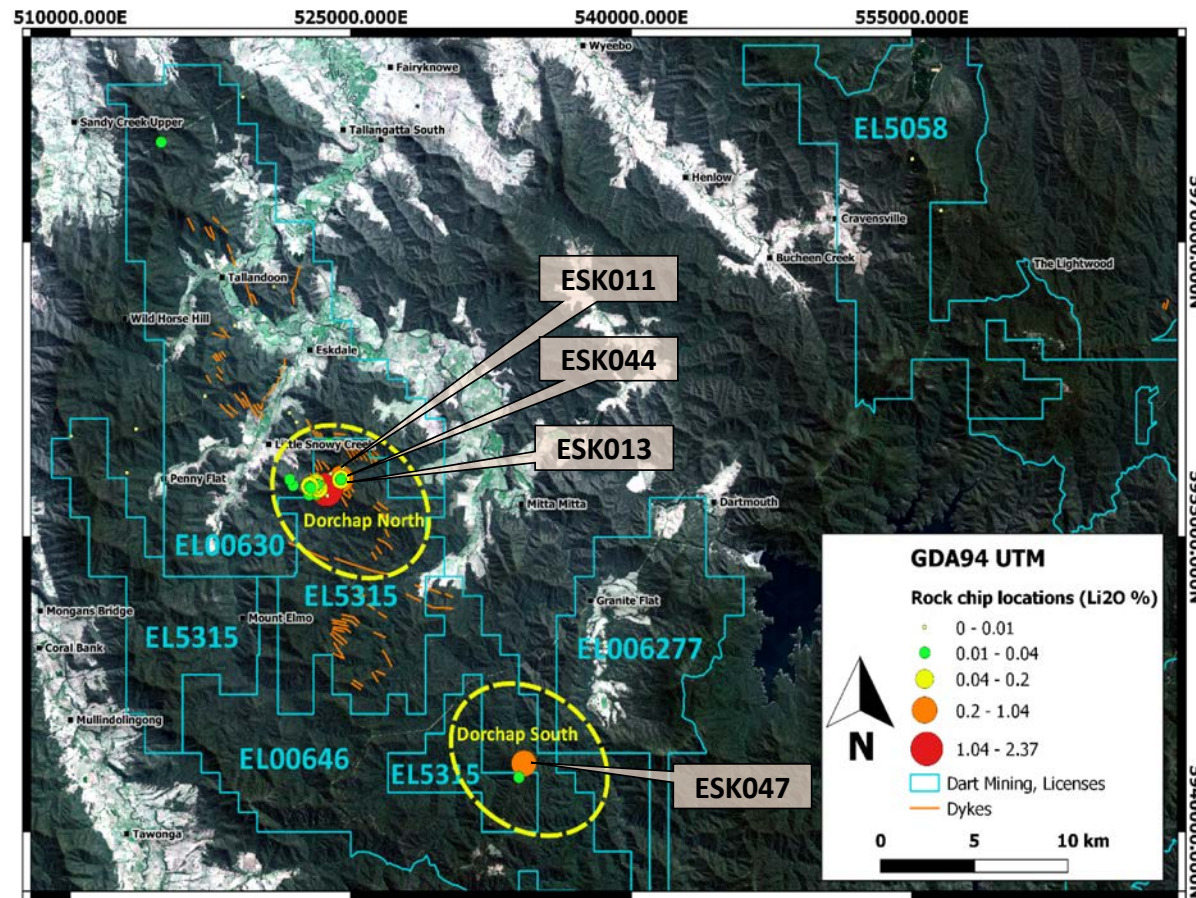
# Dorchap Dyke Swarm Lithium Project



- Follow up exploration continues to expand the trend of known dykes
- Targeting clusters of LCT bearing pegmatite dykes
- Ground follow up required at selected targets defined by second phase helicopter survey
- The dyke data (orange lines) was obtained by government geological survey datasets and should not be considered comprehensive for the area.



# Dorchap Dyke Swarm Lithium Project



- Satellite imagery showing the location and magnitude of recent rock chip locations with respect to concentrations of  $\text{Li}_2\text{O}$  %.
- Cluster of 15 dykes at Dorchap North - Boones Prospect within an area 4000m x 3000m to be mapped
- Mapping of dykes to commence in August 2018
- Tracked drill rig available in circa Sept/Oct 2018

Rock Chip Sample ID	$\text{Li}_2\text{O}$ %
ESK013	2.37
ESK047	1.04
ESK011	0.88
ESK044	0.20





# Dorchap Dyke Swarm Lithium Project

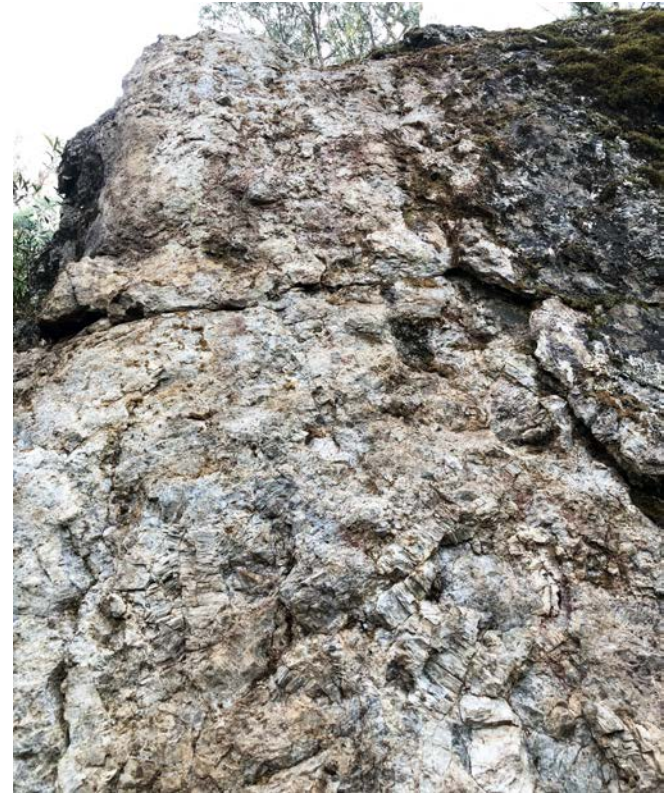
- Outcrops at the Boones Prospect host large crystals of petalite and spodumene
- Area is heavily vegetated requiring upgrading of access tracks for ground follow up
- Geological mapping will define the size and extent of LCT pegmatite outcrops at Boones and Gosport prospect areas



Pegmatite dyke outcrop with large 14x7 cm petalite crystals at Dorchap North



Pegmatite dyke outcrop with 30x10 cm petalite crystal at Dorchap North



# Other Projects

- **Porphyries**
  - Fresh eyes approach with re-evaluation of existing targets and data
  - Advanced Geo-physical work can be completed over 6 week period
- **Orogenic Gold**
  - Rushworth Project – Bulk sampling program
  - Expanded Mt View ML – Drilling program north of main pit looking for extension of high-grade repetition
  - Potential monetisation strategy including combining third party assets with Dart's gold assets



# Work Program

- Detailed mapping of the Boones and Gosport Prospect and other highest priority areas
- Rock chip sampling and geochemical/petrological analysis
- Drill test priority dykes
- Ongoing drilling with success
- Continue systematic first pass exploration in Dart's prospective Li tenure
- Advance Darts porphyry and gold projects



# Summary

- Dorchap Dyke Swarm Li Project exploration program progressed with significant success
- Results too date are highly positive and provide confidence for the next phase of exploration
- Multiple targets have been identified for mapping prior to drill testing
- Initial focus on Boones and Gosport prospects where large crystals of Petalite and Spodumene occur in outcrop
- Cluster of 15 dykes at Boones - drilling to commence in September 2018
- Fully funded to commence exploration and elevate the profile of the Dart's Li assets





# Disclaimer

The information contained in this presentation is for informational purposes only and does not constitute an offer to issue, or arrange to issue, securities or other financial products. The information contained in this presentation is not investment or financial product advice and is not intended to be used as the basis for making investment decisions. The presentation has been prepared without taking into account the investment objectives, financial situation or particular needs of any particular person. Before making an investment decision, you should consider, with or without the assistance of a financial advisor, whether an investment is appropriate in light of your particular investment needs, objectives and financial circumstances.

No representation or warranty, express or implied, is made as to the fairness, accuracy, completeness or correctness of the information, opinions and conclusions contained in this presentation. To the maximum extent permitted by law, none of Dart Mining NL, their directors, employees or agents, nor any other person accepts any liability, including, without limitation, any liability arising out of fault of negligence, for any loss arising from the use of the information contained in this presentation. In particular, no representation or warranty, express or implied is given as to the accuracy, completeness or correctness, likelihood of achievement or reasonableness or any forecasts, prospects or returns contained in this presentation nor is any obligation assumed to update such information. Such forecasts, prospects or returns are by their nature subject to significant uncertainties and contingencies.

## **Forward Looking Statements Caution**

Certain statements contained in this document constitute forward looking statements. Such forward-looking statements are based on a number of estimates and assumptions made by the Company and its consultants in light of experience, current conditions and expectations of future developments which the Company believes are appropriate in the current circumstances. These estimates and assumptions while considered reasonable by the Company are subject to known and unknown risks, uncertainties and other factors which may cause the actual results, achievements and performance of the Company to be materially different from the future results and achievements expressed or implied by such forward-looking statements. Investors are cautioned that forward looking information is no guarantee of future performance and accordingly, investors are cautioned not to place undue reliance on these forward-looking statements.

## **Competent Person Statement**

The information in this presentation that relates to Exploration Results is based on information compiled by Mr Chris Bain who is an independent consultant to the Company. Mr Bain is a member of the Australasian Institute of Mining and Metallurgy and has sufficient experience that is relevant to the style of mineralisation and type of deposit under consideration and to the activity being undertaken to qualify as Competent Person as defined in the 2012 Edition of the "Australasian Code for Reporting of Exploration Results, Mineral Resources and Ore Reserves". Mr Bain consents to the inclusion in the release of the matters based on this information and the form and context in which it appears. All exploration results reported have previously been released to ASX (10 May 2018) and are available to be viewed on the Company website [www.dartmining.com.au](http://www.dartmining.com.au). The Company confirms it is not aware of any new information that materially affects the information included in the original announcement. The Company confirms that the form and context in which the Competent Person's findings are present have not been materially modified from the original announcements.

