

A new era in neuroscience and early childhood digital health



DISCLAIMER



Investment in Novita Healthcare (“Novita”) is subject to investment risk, including possible loss of income and capital invested. Novita does not guarantee any particular rate of return or performance, nor do they guarantee the repayment of capital.

This presentation is not an offer or invitation for subscription or purchase of or a recommendation of securities. It does not take into account the investment objectives, financial situation and particular needs of the investor. Before making any investment in Novita, the investor or prospective investor should consider whether such an investment is appropriate to their particular investment needs, objectives and financial circumstances and consult an investment advisor if necessary.

This presentation may contain forward-looking statements regarding the potential of the Company’s products, projects and interests and the development and assessment/therapeutic potential of the company’s products/research and development. Any statement describing a goal, expectation, intention or belief of the company is a forward-looking statement and should be considered an at-risk statement. Such statements are subject to certain risks and uncertainties, particularly those inherent in the process of discovering, developing and commercialising software and medical technologies that are safe and effective tools for human use and the financing of such activities.

There is no guarantee that the Company’s products (others than those already cleared by regulatory bodies) and/or research and development projects and interests (where applicable) will receive regulatory clearance/approvals or prove to be commercially successful in the future. Actual results of the commercialisation and further research could differ from those projected or detailed in this presentation. As a result, you are cautioned not to rely on forward-looking statements. Consideration should be given to these and other risks concerning current products and the research and development programs referred to in this presentation.

CORPORATE OVERVIEW (ASX: NHL)



Company profile

- **NOVITA Healthcare Limited** is a digital software development and commercialisation business focused in the area of neuroscience
- **TALI Train™** is a world leading patented digital platform technology¹ to strengthen core underlying attention in early childhood
- **TALI Detect** is the digital assessment program for childhood attention due to be released Q3 2019
- **Global from day one** is our focus and our solutions are scalable SaaS applications that meet global health and wellbeing issues

Financial information

Share price (30th-July-19)	A\$0.012
Number of shares	449.3m
Market capitalisation	A\$5.4m
Cash (30-April-19)	A\$0.7m
Debt (30-Sept-18)	No debt
Enterprise value	A\$4.7m

Source: Automic

Key shareholders

P & D DIAMOND SUPER FUND A/C	12.24%
BNP PARIBAS NOMINEES PTY LTD	5.07%
GREY INNOVATION	4.65%
MOONAH CAPITAL PTY LTD	4.45%
THREE ZEBRAS	3.78%
Top 20 shareholders (30-JULY-19)	57.79%

1. Intellectual property (IP) licence agreement in place between NHL and Monash University for commercialisation

Tali Investment Highlights

Global Business Opportunity

- Globally 136 million children have attention difficulties. **HOWEVER**, Children who experience non-clinical attention difficulties can also benefit from Tali Train
- Digital Therapeutic Platform built and cleared to market with initial product application - Tali Train released July 2018. Tali Train (ARTG Class 1, FDA Class 2) is a scientifically proven game-based training program focused on treating childhood attention issues
- Tali Detect (attention assessment program) clinical trial program to be completed late 2019
- Tali Train currently delivered via Healthcare professionals and school customers in Australia, USA, Hong Kong and Singapore
- Access to insurance scheme(s) — approval as a Registered Provider in the National Disability Insurance Scheme (NDIS) in Australia (TALI IS NO OUT OF POCKET COST FOR THOSE ELIGIBLE UNDER THE SCHEME)
- Go to market strategy and business model set

THE COMPANY – Your Board and team



Sue MacLeman

- Sue has more than 30 years' experience as a pharmaceutical, biotechnology and medical technology executive
- Sue has served as CEO and Board member of several ASX and NASDAQ listed companies in the sector



Glenn Smith

- Over twenty years experience in leading customer-centric businesses in periods of rapid growth
- Seasoned executive who has held senior roles in strategy, investment, R&D, marketing, sales and operations



Jefferson Harcourt

- Founder of Grey Innovation, significant product development and commercial expertise
- Sits on a number of private technology company boards in medical device and security markets



Mark Simari

- Significant experience on boards in privately held and ASX-listed companies
- Responsible for driving growth strategies including acquisitions, capital raising, restructuring, and driving strategic and business planning processes

What is the problem?

..Lack of Attention

Attention — A Global Issue: cognitive assessment and training market to grow from USD 1.98 billion in 2016 to USD 8.06 billion by 2021 (CAGR of 32.3%).

Attention problems are the most commonly reported childhood issue with 40% of children who are otherwise typically developing at the age of four have some degree of attention difficulty



136M children
globally have severe attention
difficulties



6.1M children
in the USA have ADHD as a
diagnosed condition



400,000 children
in Australia severe attention difficulties
with **\$24 billion dollars as the annual cost
of childhood inattention in Australia**

- NHMRC, The Royal Australasian College of Physicians. *Australian Guidelines on ADHD* (2009)
- Buescher A.V., Cidav Z., Knapp M., Mangell D.S. *JAMA Pediatr* 168(8):721-728 (2014). *Economic Cost of Autism Spectrum Disorders in Australia*. Synergies Economic Consulting (2011)

What is attention?

In simple terms most of us take for granted the ability to stay focused on one task. But did you know that attention problems are the most commonly reported childhood difficulty.

Attention is important because:

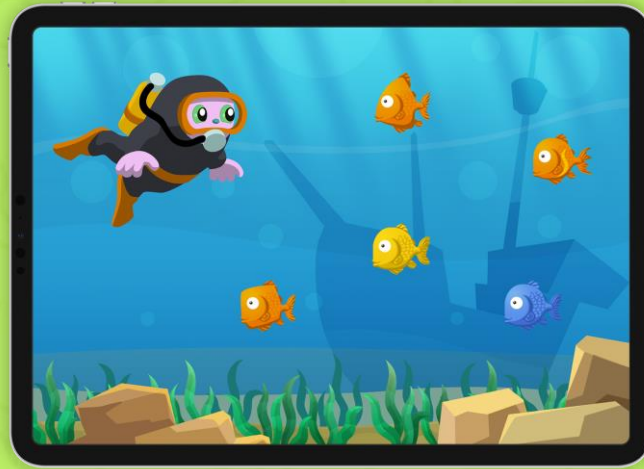
- A lack of attention is closely associated with the ability to learn, social inclusion and critical to mental and general well being

Studies have found:

- Attention at the age of 4 years predicts math and reading at the age of 21 years
- Attention at the age of 4 years predicts the odds of completing college by age 25
- 136 million children globally have diagnosed severe attention difficulties

What is the solution?

..Tali Train

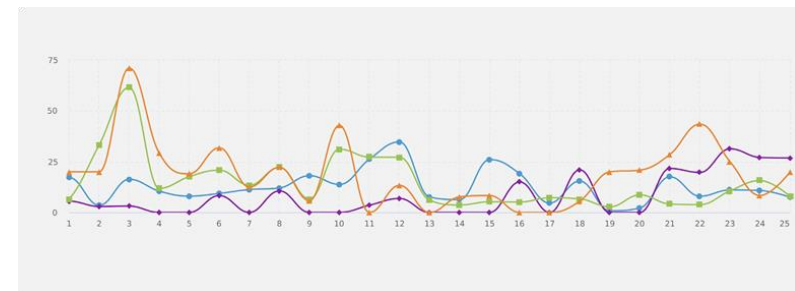
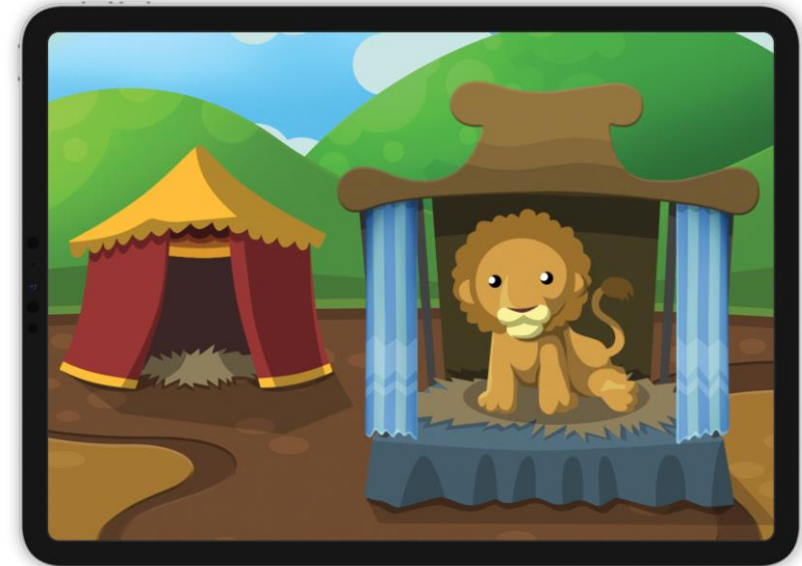


Video game-based assessment and training

Who and what is Tali?

Science and Technology Combining to Deliver Optimised Assessment and Treatment

- We build evidence based digital tools to assess and strengthen attention early in life
- We have done this by taking research from one of Australia's leading neuroscience institutes, Monash University, and built algorithms and game based digital environments to assess and train core attention in early childhood
- Our market demographic consists of children aged 3 to 8 years where pharmaceutical treatment in developed countries like Australia and the United States is not typically an option
- We are tackling a >USD8B market opportunity



Tali Train is delivered via tablet

Tali Train is a game-based attention training for 3 to 8 year-old children delivered via tablet prescribed (by a healthcare professional) for use at home, or delivered in a classroom setting at school. It only takes 20-30 min per day to administer but is recommended to be used for 5 weeks (5 days/week) for obtaining the best results.

At home (via healthcare professional)

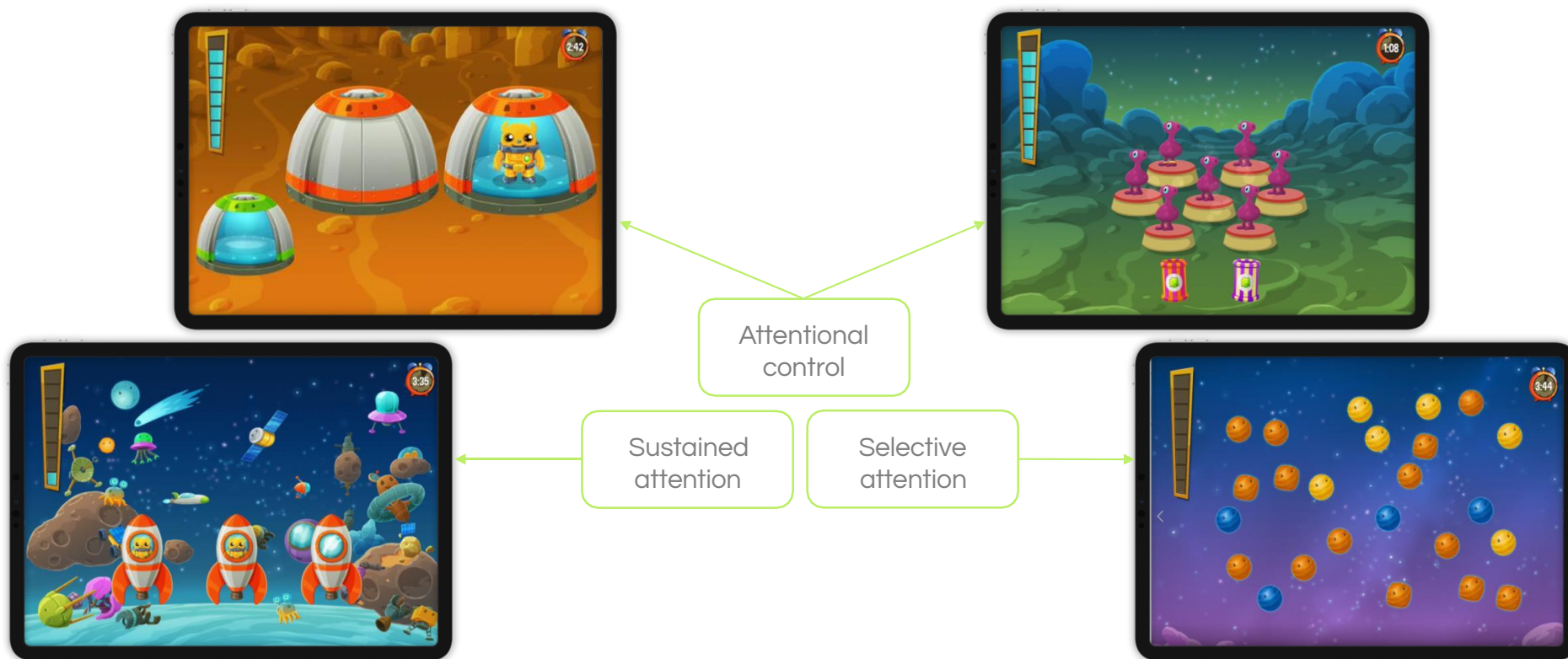


At school



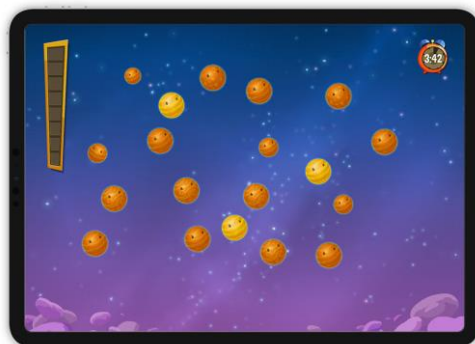
Tali Train

Supports children with attention difficulties by training each attention network in their natural environment



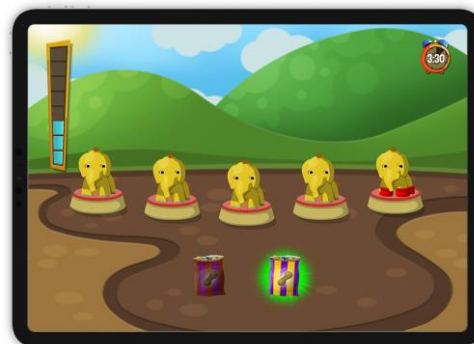
Tali Train exercises

Helping kids build core attention skills



Selection

This exercise trains children to pay attention to important information while filtering out distractions. This skill is important for children within a classroom setting as they learn to block out distractions like computers humming or lights flickering, and concentrate on their teacher's voice.



Control

Here, a child's ability to focus and respond to key information whilst ignoring conflicting information is exercised. In a classroom, this is the ability to follow multi-step instructions or to work independently and as part of a group.



Focus

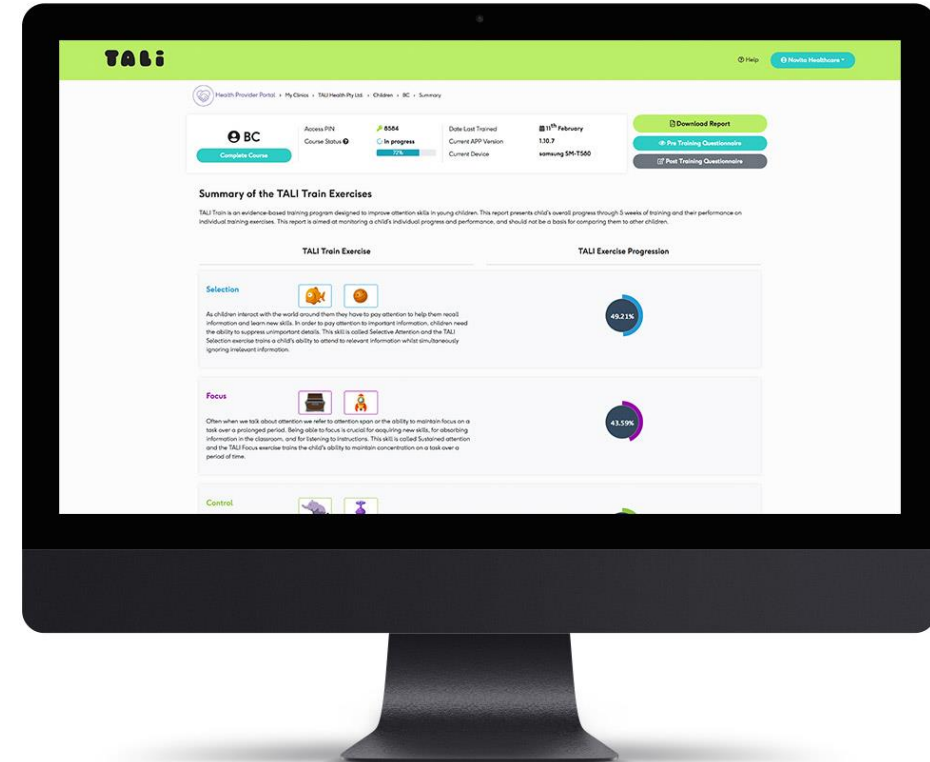
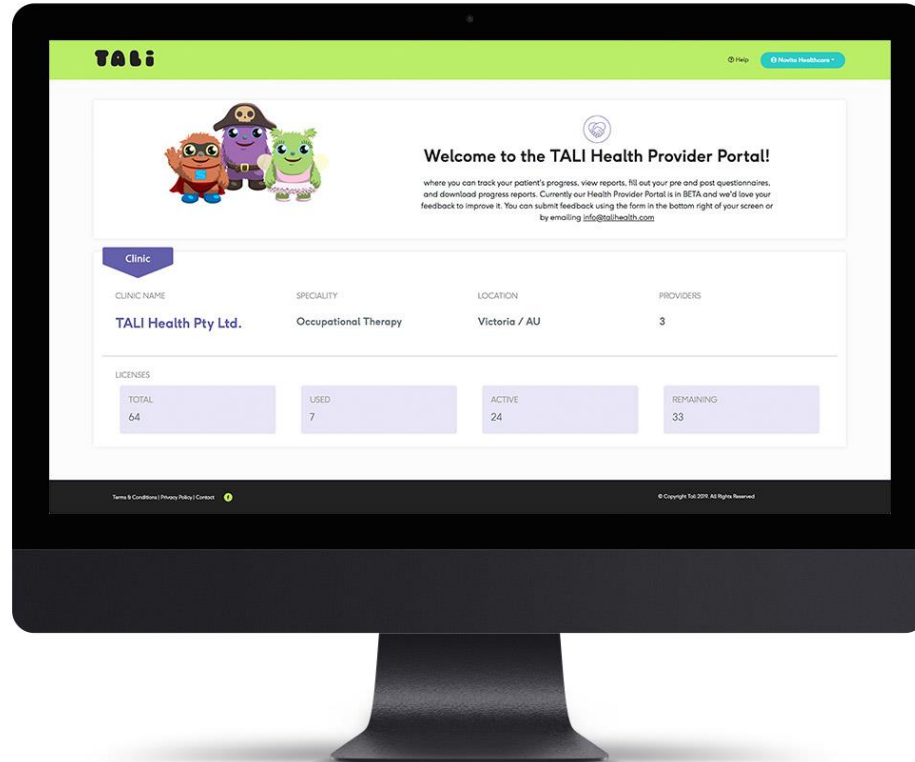
This exercise trains a child's ability to maintain concentration on a task over a period of time. Attention span is essential in a classroom environment for acquiring new skills, absorbing information and listening to instructions.



Inhibition

The inhibition exercise trains a child's ability to resist dominant behaviour and give a more considered response. Within a classroom environment, controlling thoughts and behaviours such as fidgeting or talking over the top of others are important skills.

Tali Train is another “tool in the toolkit” as a first line intervention or complimentary to existing treatments



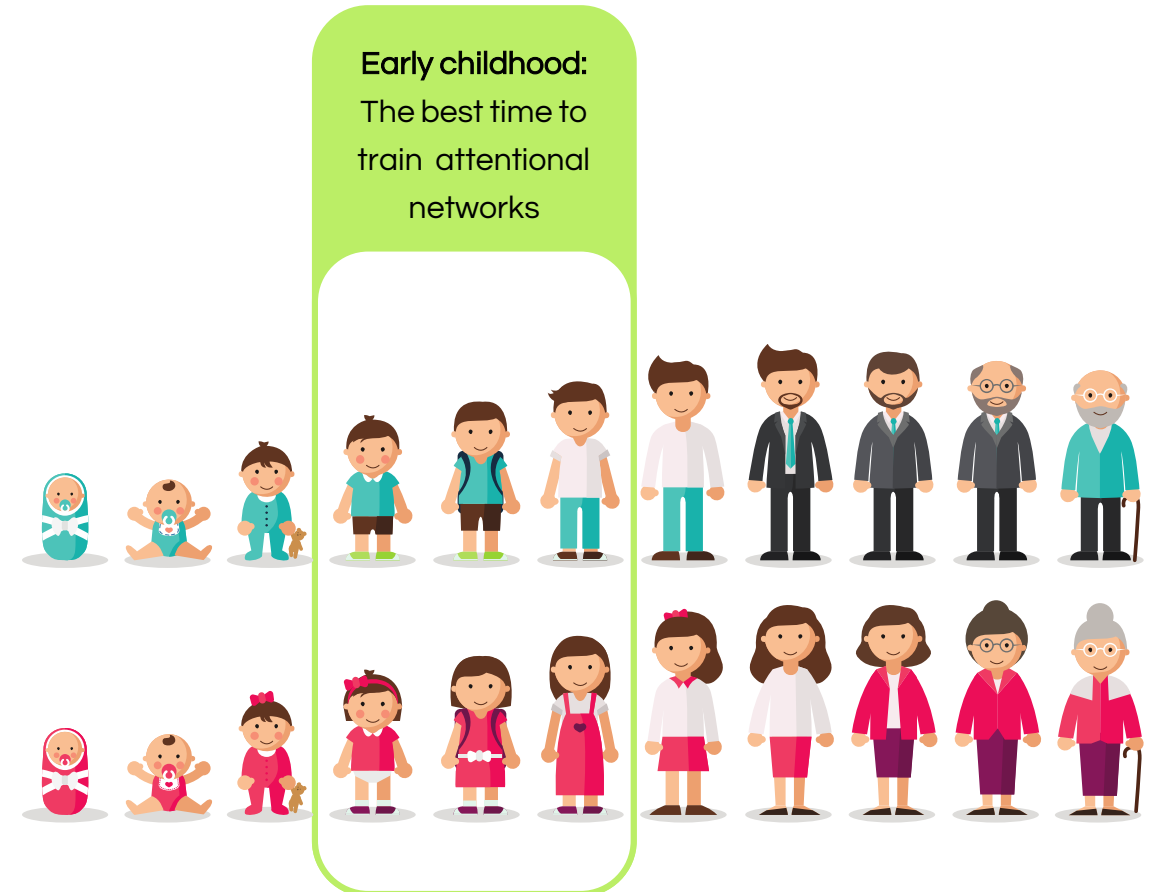
Compliance and progression through the program can be monitored by clinicians, educators and parents in the Tali Portal



Evidence

Early assessment and intervention is key

- Attention difficulties are typically apparent in early childhood, with ADHD being most commonly diagnosed around 7 years of age.
- If left untreated they can lead to anxiety, depression, delinquency, and increased risk of substance abuse.
- Attentional networks develop between ages 2 and 7 years, attentional training is usually of highest importance in this age period
- Attentional networks are trainable if assessed early when brain plasticity is most receptive



The Evidence

Tali is Effective for Children with Development Disorders as well as Typically Developing Children

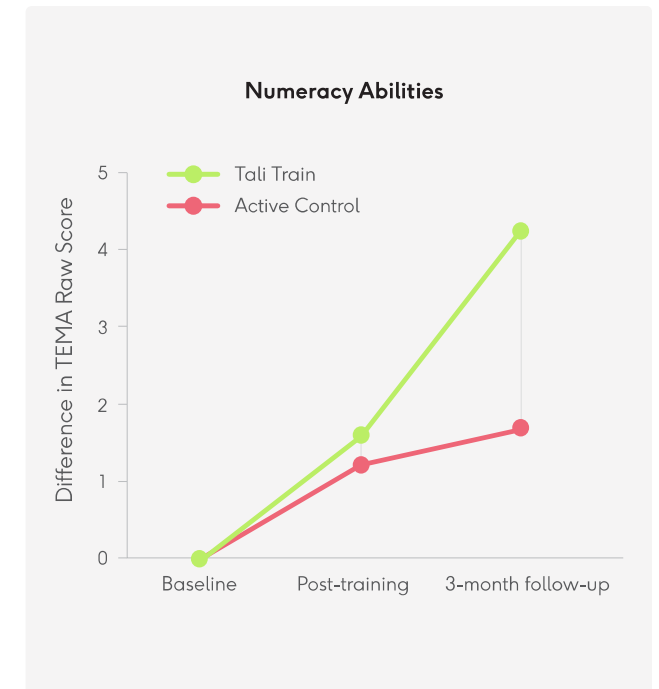
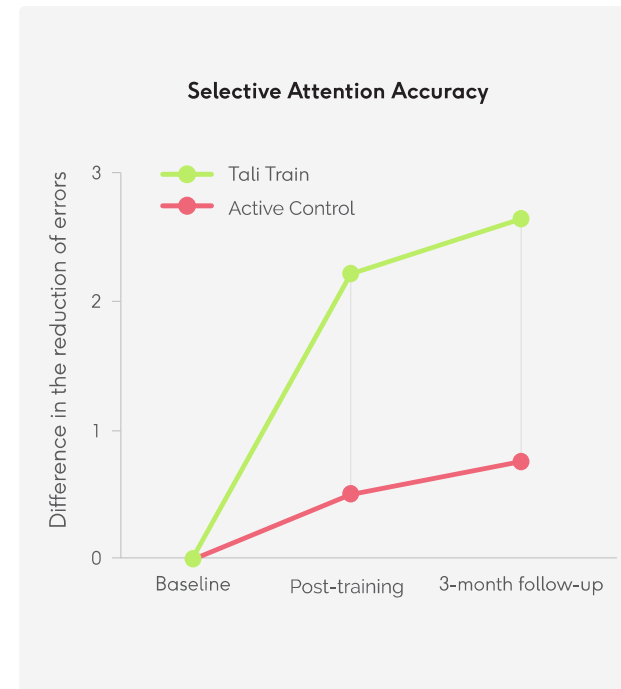
Results of a rigorous double-blind randomised controlled clinical trial investigating the effectiveness of Tali Train have shown that children who used Tali Train vs another touchscreen program for the same period of time are as follows⁵:

Children with developmental disorders:

- Achieved significantly greater gains in selective attention immediately after training [$b = -1.68$, $p < 0.05$, $d = 0.24$]
- Attentional gains were maintained up to three months after training had ceased [$b = -1.87$, $p < 0.05$, $d = 0.26$]
- Showed significantly greater improvements in numeracy skills three months after training had ceased [$b = 1.94$, $p < 0.05$, $d = 0.15$].
- These findings are part of one of the few studies that have successfully promoted transfer to untrained skills

Typically developing children:

- Had a significant reduction in ADHD symptoms in the classroom immediately after training [$b = -13.53$, $p = 0.001$, $d = 0.86$]



Scientific Publications and Awards



Australian Government
Australian Research Council



2012 Australian Research Council **Grant**

Professor Kim Cornish awarded ARC Linkage Grant

How does childhood inattention impact on the emerging cognitive landscape?

2015 Publication: **Review**

Review of cognitive training

Need more evidence of their efficacy

Cognitive training as a resolution for early executive function difficulties in children with intellectual disabilities
Kirk, H., Gray, K., Riby, D., and Cornish, K. (2015)



2016 Publication: **Experimental**

Children with developmental disorders have different cognitive attention profiles despite similar behavioural attention profiles

Visual attention and academic performance in children with developmental disabilities and behavioural attention difficulties
Kirk, H., Gray, K., Riby, D., Taffe, J. and Cornish, K. (2016)



2016 Publication: **RCT**

Tali Train significantly reduced errors in selective attention

Attention training can positively impact aspects of attention in children with developmental disorders

Computerised attention training for children with intellectual and developmental disabilities: A randomised controlled trial
Kirk, H., Gray, K., Ellis, K., Taffe, J. and Cornish, K. (2016)



2017 Publication: **RCT**

Tali Train significantly improved numeracy skills in children with developmental disorders

Improvements in untrained outcomes (e.g. numeracy) may benefit children with ASD, DS, NSID

Impact of attention training on academic achievement, executive functioning, and behaviour: A randomised controlled trial
Kirk, H., Gray, K., Ellis, K., Taffe, J. and Cornish, K. (2017)



Australian Government
National Health and Medical Research Council



2017 Development **Grant**

Professor Cornish & Dr Kirk for the development of Tali Train

Typically developing children and children with ABI's

Interactive attention training technology to enhance cognitive skills in early life
Kirk, H., Anderson, V., Harcourt, J., Catroppa, C., McIntosh, B., Reynolds, J., and Cornish, K. (2017)



Australian Government
Department of Industry, Innovation and Science

Business
Cooperative Research Centres Program

2017 Cooperative Research Centre Project **Grant**

Professor Cornish & Dr Kirk awarded CRC-P Grant from the Department of Industry, Innovation and Science

A scalable detection tool for childhood inattention: Tali Detect™



Model & Traction

Traction

Our **key audiences** understand the large **unmet market opportunity** for the non-pharmaceutical treatment of childhood attention disorders – **NOVITA is positioned at the forefront of this opportunity**



Parents

There is an opportunity for parents to positively impact their child's future development if signs of attention difficulties are spotted and diagnosis / treatment is sought.



Providers

It is clinically proven and well-known amongst the clinical community that early intervention provides the best outcomes for patients with attention difficulties. However, clinicians are searching for non-drug based therapies to use in the early stages that provide long term results.



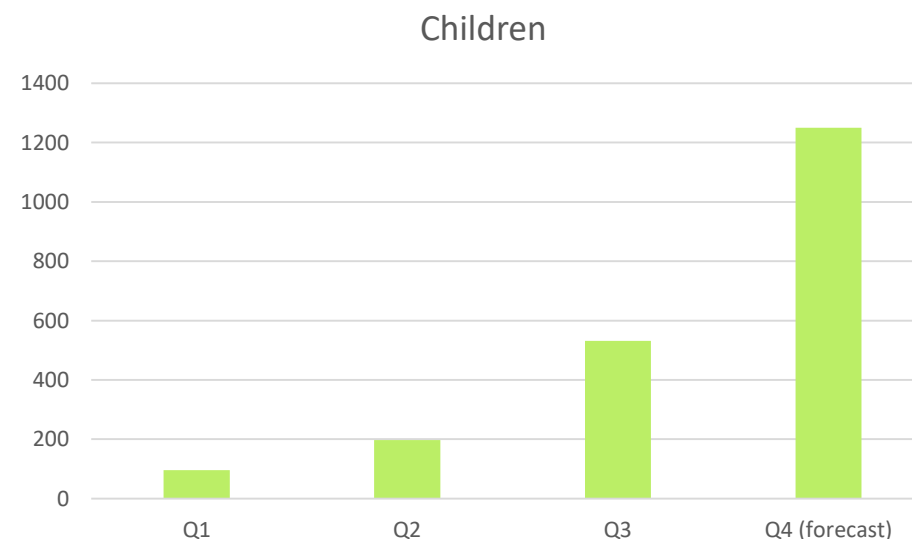
Schools

Early intervention will present improvements in learning for children with attention difficulties in the initial stages of their education, reducing pressure on the schooling system to offer extensive special needs assistance.

Where Are We Today?

In market (Tali Train) with Tali Detect on track for late 2019 launch

- ~200 providers (including multiple schools) in multiple geographic regions delivering Tali Train
- >2,000 children (in schools and via healthcare professionals) use Tali

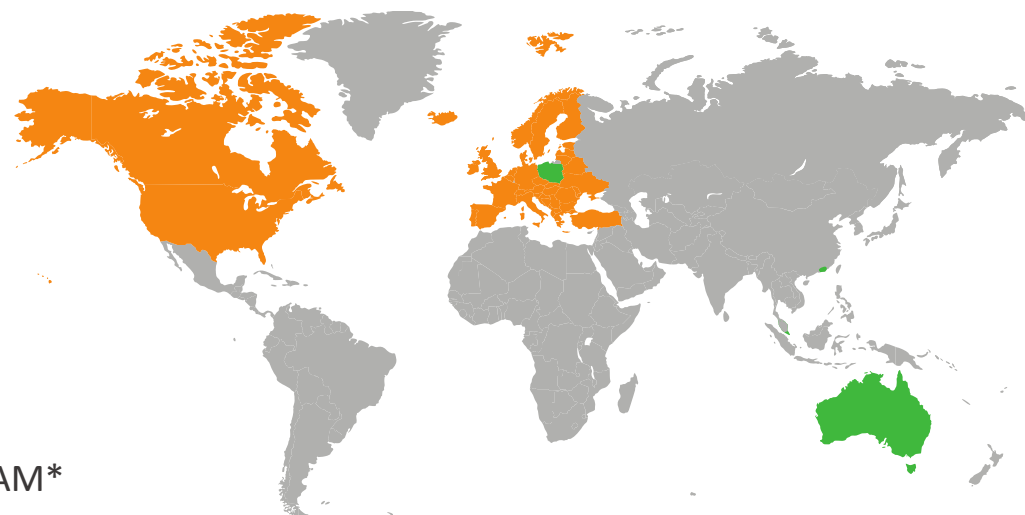


WHERE ARE WE HEADING IN 2019 AND BEYOND?

Global from day one means delivering our apps to a global audience via multiple channels
– e.g. direct to parent via app store, schools, healthcare professionals, channel partners

- **Continue to grow in markets:**
 - Australia
 - Hong Kong
 - Singapore
- **Expansion into:**
 - North America
 - UK and Europe
- USA Attention Spectrum Disorder treatment TAM*
= **USD\$2B**
- USA ADHD treatment TAM* = **USD\$10B**

*TAM = Total Addressable Market



How do we know it is working?

93% of users have demonstrated positive improvements in:

a) Inattentive behaviour and b) Hyperactive behaviour

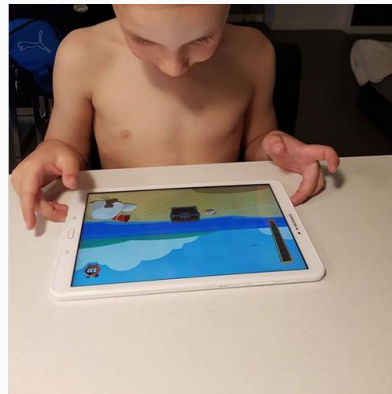
Average score and improvement*

	Before training	After training	Difference before-after
Total Score	27	9	-18
Inattentive Behaviour	14	4	-10
Hyperactive Behaviour	13	5	-8

**The lower the score the fewer difficulties in attention. Average score and improvement as recorded from children/parents who are users of Tali Train*



Not just attention results, but happy children



6 5 Comments Seen by 19

Like Comment

View 3 more comments

Catherine Gibson My boy became fixated on needing to plug it and charge it even though it had full charge Will plug it in tomorrow to remove the distraction.

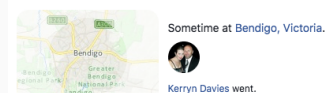
Like · Reply · 6w

New Born Baby Hi Deana 'Moore' Azzopardi Training should be completed in a quiet area free from distractions such as television and radio. We recommend that your child uses headphones whilst completing the program and have a clear structure around when training will be completed.

Like · Reply · Commented on by Rachael Ferrari [?] · 6w

Kerryn Davies had a get-together.
September 19 at 6:29 PM

Harry is really enjoying the space themed games. We are seeing improvement every time he plays. We always have some food on hand to keep his focus at the table rather than searching for other things to do at the same time.



3 1 Comment Seen by 15

Like Comment

New Born Baby That's great! Kerryn Davies

Like · Reply · Commented on by Rachael Ferrari [?] · 4w

Write a comment...

Kristine Henderson
September 6

The past two days, Jake has been keen to play with his Tali's before school. He has enjoyed the new content, and says that he is concentrating a little more in school. His class has gone through a bit of upheaval this year - his teacher left at the end of term 2 and it took until week 2 of term 3 to get a new teacher. Today the class has joined another, so hopefully this new focus will help him settle into the new classroom environment.

3 2 Comments Seen by 5

Like Comment

Catherine Gibson Good luck, hope he has a great day.

Like · Reply · 6w

New Born Baby That's great Kristine Henderson that he is already feeling like he is able to concentrate more at school. Good luck with the new teacher.

Like · Reply · Commented on by Rachael Ferrari [?] · 5w

Write a comment...

Catherine Gibson
September 19 at 5:43 PM

Really good session this morning - Hunter asked if he could play Talis while eating his breakfast - was a bit hesitant but seeing as he was sitting still and seemed excited I figured I'd risk it. He was more focussed than usual and although there were a few pauses to shovel corn flakes in his mouth these time periods were actually shorter than his usual periods of distraction. He got through 3 games really focussed, lost it a bit on the last game but overall I was really, really happy with how he did.

4 2 Comments Seen by 4

Like Comment

Kerryn Davies Harry is the same. We now always have some form of food on hand for him.

Like · Reply · 4w

New Born Baby Good to hear Catherine Gibson. Incentives really can help. Research shows that the support of the family or caregiver is integral in obtaining the best results from early intervention programs. By sharing the training time with your child, you are not only offering them your support and encouragement, you are modelling desired behaviours. An understanding of the program and the parts that stand out for your child offers you the opportunity to use examples to illustrate and highlight your child's skills and accomplishments in the real world.

Like · Reply · Commented on by Rachael Ferrari [?] · 4w

Write a comment...

Catherine Gibson shared a link.
October 11 at 11:13 AM

<https://www.heraldsun.com.au/.../ae5cfaac783c41bf78168c5158bb...>



HERALDSUN.COM.AU

Attention-grabbing plan to give every prep best start

EVERY prep child would be tested for their attention and concentration...

8 4 Comments Seen by 9

Love Comment

View 2 more comments

Jenn Jenkins Kaye Finnin Counsellor

Like · Reply · 6d

New Born Baby Awesome photo and interview Catherine Gibson

Like · Reply · Commented on by Rachael Ferrari [?] · 6d

Write a comment...



Looking Forward

Tali Detect

Early assessment of childhood attention vulnerabilities matter

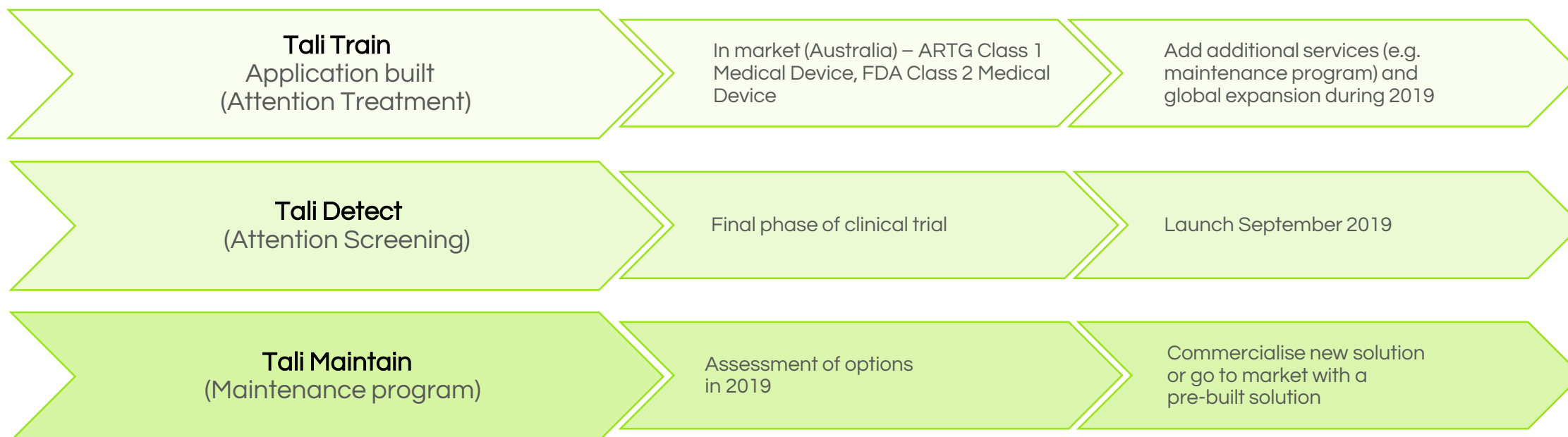


Tali Detect helps with early assessment of attention vulnerabilities in children's natural environment.

Our Current and Future Pathways

Product Now and a Pipeline to Growth

Digital software and device strategy — focus on domestic growth before expanding into global markets, allowing us to leverage off similar marketing channels and insurance schemes for our current and future technologies



KEY ACTIONS IN 2019/2020 – deliver on our promise of product in the hands of children

- ✓ Continue to recruit schools as clients of TALI Train building referenceable client base in **Australia, Singapore, Hong Kong**
- ✓ **Drive sales growth** through integrated marketing and sales programs
- ✓ Pre-marketing activities in North America and Europe (**Partners**)
- ✓ **TALI Detect widespread trials** allows combined with engagement of key government and non-government bodies with the ability to assist in widespread deployment of TALI Detect
- ✓ **Recruit key opinion leaders globally** to drive awareness and recognition of TALI



A stylized smiley face graphic composed of two white dots for eyes at the top, a white U-shaped line for a mouth in the center, and a wide white arc for a smile at the bottom.

Happier kids start here.

www.novitahealthcare.com.au

TALi