



# DISCOVERING COPPER IN THE KALAHARI

121 MINING HONG KONG | OCTOBER 2018

ASX:KMT

# DISCLAIMER

## **Important Notice and Disclaimer**

This presentation has been prepared to provide information on the Kopore Metals Limited (Kopore), its Botswana subsidiaries and Botswana projects. It is not intended as an offer, invitation solicitation or recommendation with respect to the purchase or sale of any securities. This presentation should not be relied upon as the sole representation of any matter that a potential investor should consider in evaluating Kopore. Its affiliates or any of its directors, agents, officers or employees do not make any representation or warranty, express or implied, as to or endorsement of, the accuracy or completeness of any information, statements, representations or forecasts contained in this presentation, and they do not accept any liability for any statement made in, or omitted from, this presentation. Prospective investors should make their own independent evaluation of an investment in the Company.

## **Caution Regarding Forward Looking Information**

This document contains forward looking statements concerning Kopore. Forward-looking statements are not statements of historical fact and actual events and results may differ materially from those described in the forward looking statements as a result of a variety of risks, uncertainties and other factors. Forward-looking statements are inherently subject to business, economic, competitive, political and social uncertainties and contingencies. Many factors could cause the Company's actual results to differ materially from those expressed or implied in any forward-looking information provided by the Company, or on behalf of, the Company. Such factors include, among other things, risks relating to additional funding requirements, metal prices, exploration, development and operating risks, competition, production risks, regulatory restrictions, including environmental regulation and liability and potential title disputes. Forward looking statements in this document are based on Kopore's beliefs, opinions and estimates of Kopore as of the dates the forward looking statements are made, and no obligation is assumed to update forward looking statements if these beliefs, opinions and estimates should change or to reflect other future developments.

## **Competent Persons Statement**

The information in this Presentation that relates to exploration results is based on information compiled by Mr David Catterall, a Competent Person and a member of the South African Council for Natural Scientific Professions, a Recognised Professional Organisations (ROPO). David is engaged by Kopore as a consultant Exploration Manager. David Catterall has sufficient experience that is relevant to the style of mineralisation and type of deposit under consideration and to the activity being undertaken to qualify as a Competent Person as defined in the 2012 Edition of the Australasian Code for Reporting of Exploration Results, Mineral Resources and Ore Reserves (JORC 2012). David Catterall consents to the inclusion in the report of the matters based on his information in the form and context in which it appears.

# HIGHLY PROSPECTIVE GEOLOGY

within a major copper corridor

---

**DOMINANT LANDINGHOLDING  
ON THE KALAHARI COPPER BELT**  
covering 14,363km<sup>2</sup>

---

---

**ACCELERATED RC AND  
DIAMOND DRILLING PROGRAM  
OVER IDENTIFIED DOMES**

---

**PROVEN REGIONAL AND PEER EXPLORATION MODEL**

transforming the Botswana and Namibia licenses from greenfields to priority target identification

**MULTIPLE DOME TARGETS**

across Botswana and Namibia

**REINTERPRETATION OF HISTORICAL GEOLOGY**

with identified D'Kar formation closer to the surface than previously understood

# CORPORATE OVERVIEW

## Capital Structure

### CAPITAL STRUCTURE<sup>a</sup>

<b>SHARES ON ISSUE (M)</b> (Undiluted)	542.7
<b>MARKET CAP (M)</b> (at A\$0.023)	12.5
<b>CASH (M)</b> (End Jun. Q 2018)	3.9
<b>DEBT (M)</b>	0
<b>ENTERPRISE VALUE (M)</b>	8.6
<b>OPTIONS (M)</b>	85.1 <sup>b,c</sup>

### BOARD OF DIRECTORS & MANAGEMENT

**PETER MEAGHER**  
NON-EXECUTIVE  
CHAIRMAN

Peter has over 30 years' experience as a director of listed companies focused in the resources sector. Previously Chairman of Namibian Resource Developer Extract Resources (ASX: EXT), which sold for A\$2.1bn.

Peter is a Certified Practicing Accountant and has been involved in several private and public companies, and is currently the Non-Executive Chairman of Australian focused Castillo Copper Limited.

**GRANT FERGUSON**  
MANAGING DIRECTOR

Mining Executive with over 23 years' experience in international resources sector. Mr Ferguson's roles range from African resource executive positions to senior technical roles in gold and copper mining operations, including over 5 years residing in the SADC region.

**SHANNON COATES**  
NON-EXECUTIVE  
DIRECTOR

Ms Coates holds a Bachelor of Laws from Murdoch University and has over 20 years' experience in corporate law and compliance

Ms Coates is a Chartered Secretary and currently acts as company secretary to several ASX listed companies

**DAVID CATTERALL**  
EXPLORATION MANAGER

Over 30 years experience in the resource industry including specific experience in the Kalahari Copper Belt.

David's project experience ranges from grass roots exploration to feasibility studies for open pit and underground operations.

a) 55.1m Options are exercisable at \$0.0600 each, three year expiry

b) 30.0m Options are exercisable at \$0.0363 each, one year expiry, subject to shareholder approval

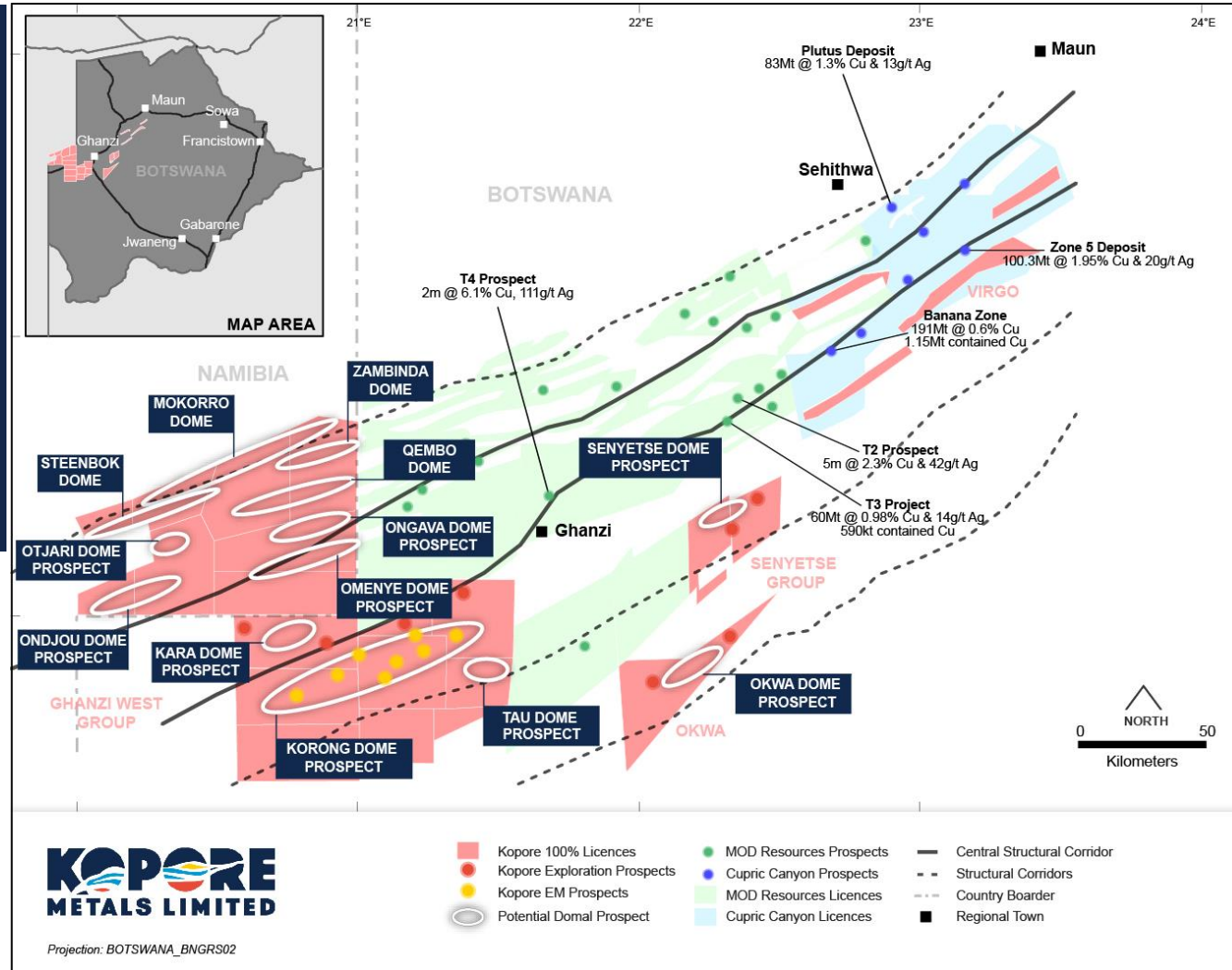


# THE KALAHARI COPPER BELT

A globally significant & under-explored region

The Kalahari Copper Belt has total resources of over **7Mt Cu (15.5Bn lbs Cu) & 260Moz Ag**

**KOPORE HOLDS 14,000KM<sup>2</sup> OF PROSPECTIVE LICENCES** down strike from MOD Resources & Cupric Canyon Capital



# GEOLOGICAL MODEL

The 'right' geology for hosting major discoveries

## KALAHARI COPPER BELT

TOTAL CURRENT RESOURCE ~7Mt Cu (14Bn lbs Cu) & 260Moz Ag

- An underexplored rapidly emerging copper province that hosts major copper-silver development projects including Cupric Canyon Capital's Zone 5 Project and MOD's T3 Project.
- The belt stretches for approximately 800km and consists of folded and greenschist metamorphosed metasedimentary rocks along the north-west edge of the Kalahari Craton.
- Cu-Ag deposits occur in the D'Kar multiple stratigraphic units of shales and siltstones with the distribution of mineralisation being structurally related. Mineralisation is typically predominately bornite, chalcocite, and chalcopyrite.

### MAJOR PROJECTS OF THE KALAHARI COPPER BELT INCLUDE:

COMPANY	PROJECT NAME	PROJECT HIGHLIGHTS
Cupric Canyon Capital <sup>1</sup>	<b>Zone 5 Project</b>	100.3Mt@1.95%Cu and 20g/t Ag, raising approx. \$350million from private equity and Natural Resource Investments unit of Barclays. Project to initially produce 50,000t Cu and 1.5 million oz Ag per year. 25year mine life
Cupric Canyon Capital <sup>2</sup>	<b>Boseto Mine</b>	Care and Maintenance. Acquisition by Cupric Canyon for treatment of Zone 5. Reserves of 15.3Mt @1.3%Cu and 9g/t Ag and Resources of 100.6Mt @1.4% Cu and 15g/t Ag
MOD Resources <sup>3</sup>	<b>Mahumo Copper/Silver Project</b>	Resources 2.677Mt @2%Cu and 50g/t Ag for 53,180t contained Cu and 4.273Moz Ag. Resource is open along strike and depth.
MOD Resources <sup>4,5</sup>	<b>T3 Copper/Silver Deposit</b>	Total resource to 60.2Mt @ 0.98% Cu and 13.9g/t Ag at a cut-off of 0.4% Cu. New A4 Dome discovery close to T3 Project, reporting initial grades of 52m @ 1.5% Cu and 14g/t Ag.

1 - <https://www.cupriccanyon.com/about-cupric>

2 - <http://www.asx.com.au/asxpdf/20150121/pdf/42w38f2nspyyq1.pdf>

3 - <http://www.modresources.com.au/botswana-copper>

4 - <http://www.modresources.com.au/sites/default/files/asx-announcements/6904236.pdf>

5 - <http://www.modresources.com.au/sites/default/files/asx-announcements/6894152.pdf>

# CROSS-BORDER ASSET PORTFOLIO

Dominant ground position in the southern Kalahari Copper Belt

## BOTSWANA

**8,658km<sup>2</sup>**

- 16 prospecting licences, including multiple regional domal scale prospects
  - Over 4,000m of RAB, RC and Diamond drilling completed since July 2018
  - 8 subsurface interpreted domal targets up to 6km in strike
  - Kalahari Copper Belt pathfinder minerals pyrite and pyrrhotite intersected in drilling
- 
- Two RC and one diamond drilling rig, currently testing highly ranked regional scale subsurface domal prospects
  - Soil sampling at Virgo licences
  - Ground reconnaissance ongoing

## NAMIBIA

**5,705km<sup>2</sup>**

- 8 prospecting licences adjoining the Botswana prospecting licences
  - Reprocessed geophysical data confirmed four domal targets and a further four potential "intact" subsurface domal structures
  - 59 historically drilled diamond, RC and percussion holes across dome targets
  - >8,000+ historical soil samples under current review for potential Cu-Zn anomalies
- 
- Environmental Management Plan (EMP) on schedule for submission October 2018
  - Government approval anticipated Q4 2018
  - Interpretation of historic data provides immediate drill targets





# BOTSWANA - KORONG AND KARA DOMES

Systematically exploring regional scale targets

## NORTH KORONG DOME

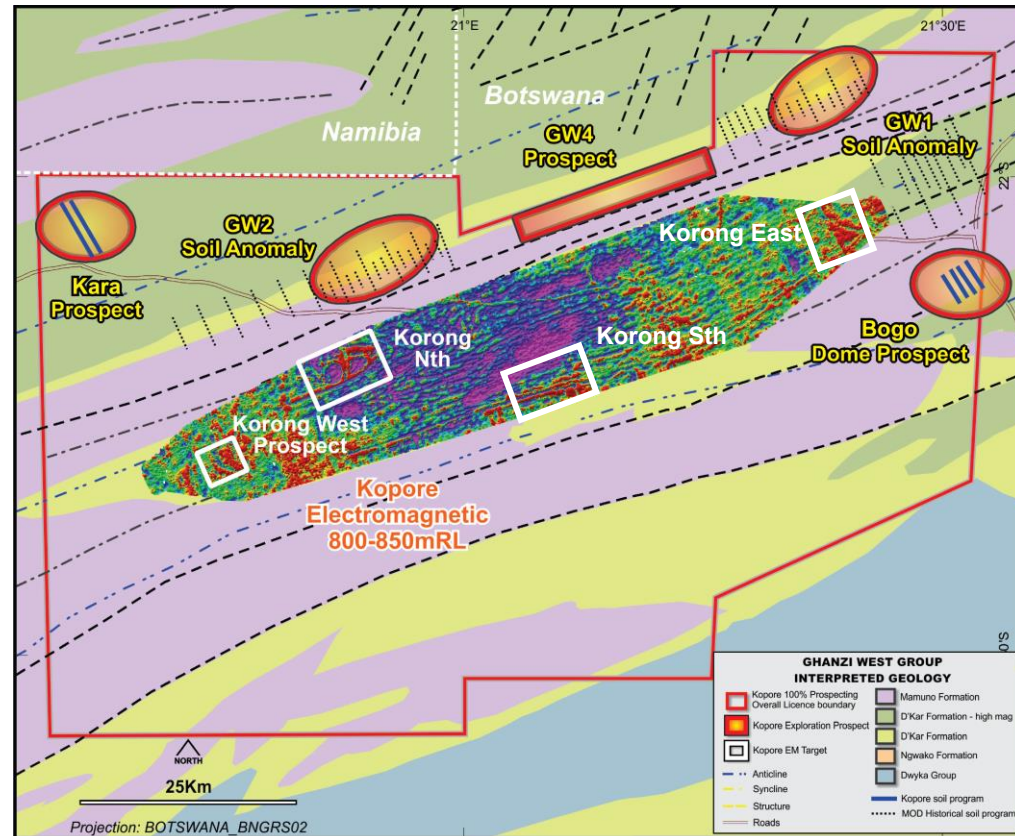
Highest priority target within the larger interpreted Korong Dome

- Two regional scale copper-lead zinc soil anomalies identified over an area of 12km<sup>2</sup>, coincident with airborne EM anomaly
- RC drill rig systematically testing Cu-Zn-Pb soil anomaly up to 3km in strike length over an interpreted anticlinal structure<sup>1</sup>

## KARA DOME

Three regional scale coincident copper-zinc-lead anomalies

- Diamond drilling has commenced to follow up highly encouraging RC & RAB drilling<sup>1</sup>
- Within the same geological and structural corridor as the MOD Resources T3 copper-silver project and recently discovered A4 Dome Prospect
- Field geological mapped anticlines coincident with copper-zinc soil anomalies
- Large cover of Calcrete and carbonaceous material

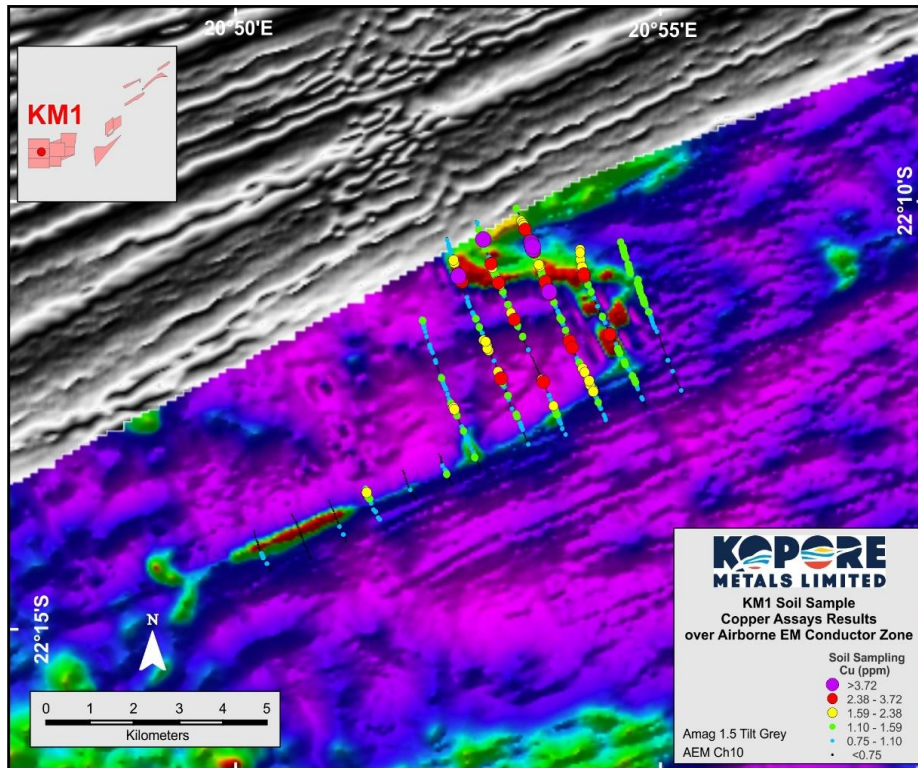




# HIGH PRIORITY DRILL TARGETS

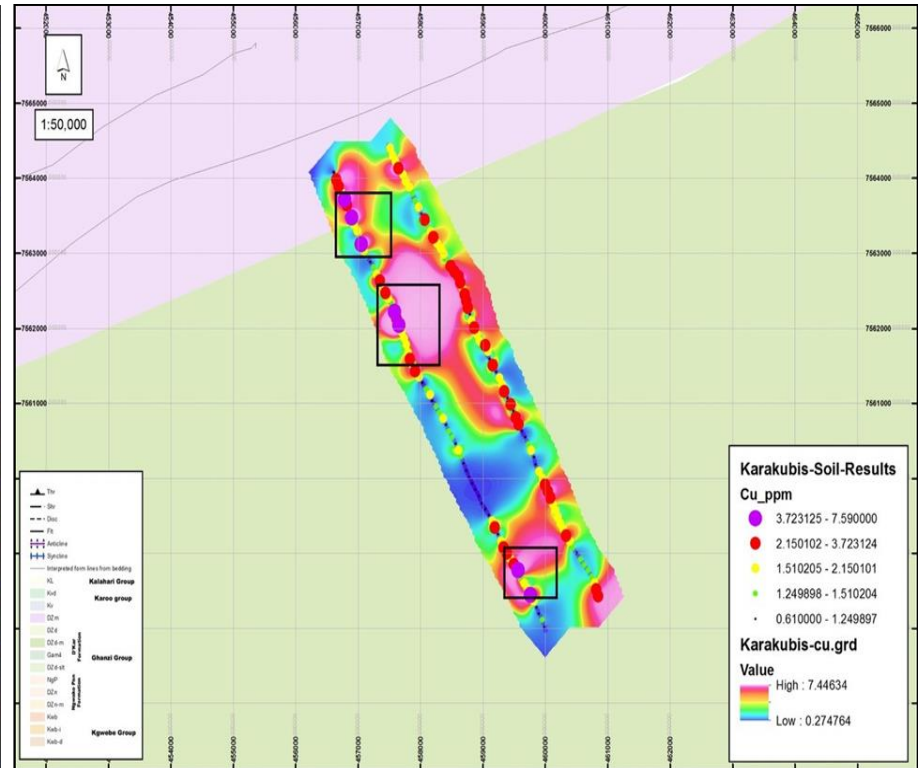
Identified through soil sampling and EM surveys

## NORTH KORONG DOME



*KM1 Copper in Soil Sample Results Overlying 2017 Airborne EM Survey Conductor Zone with Airborne Magnetics Base Map*

## KARA DOME



*GW3 Copper Soil Geochemical Point Data, Copper in Soil Contours and Interpreted Geology*

# SENYETSE GROUP

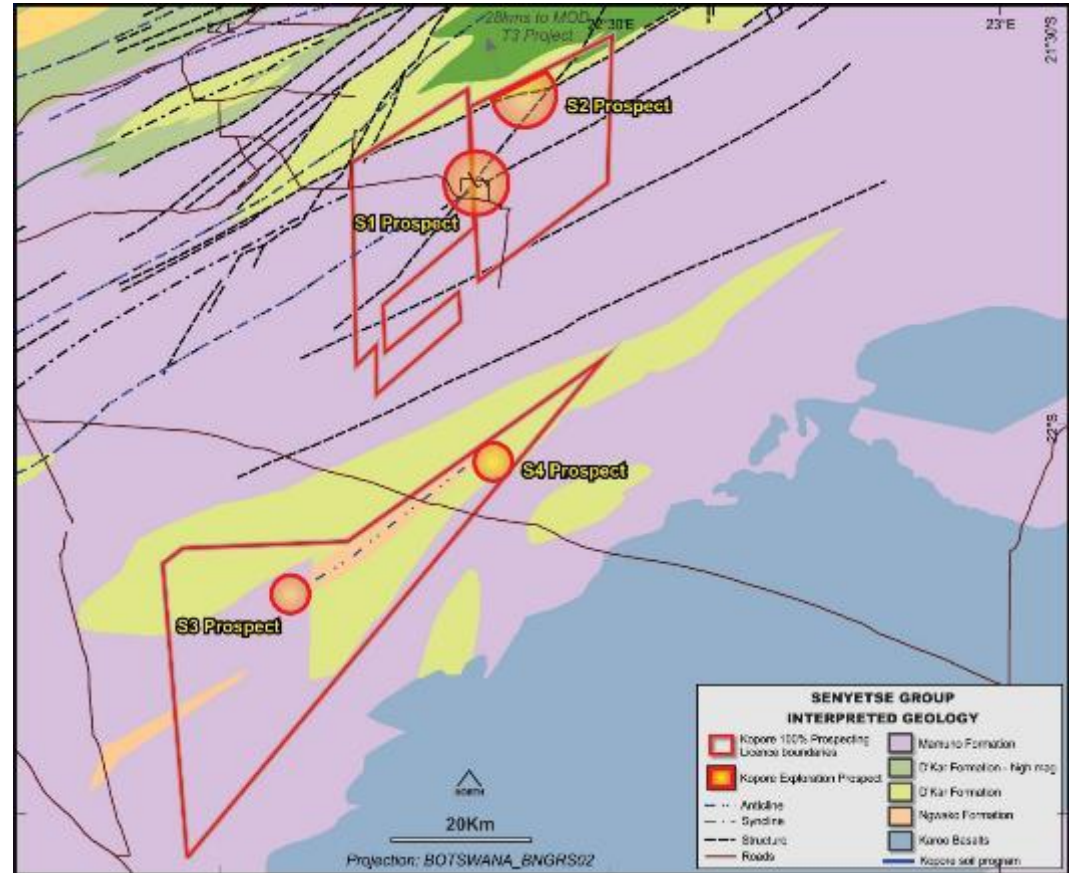
## Greenfields exploration potential

### Overview

- New geological interpretation supports a renewed view on the geological prospectivity
- S1 historical anomaly confirmed by recent soil sampling program
- Interpreted coincident fold axis and cross cutting structure highlighting anomalous Cu soil analysis results

### Exploration Strategy

- Further soil sampling program over other priority areas
- Basic ground magnetic and EM survey to refine geological contact position and drill targeting
- Focused airborne magnetic and/or EM program over interpreted domal structures



*Senyetse and Okwa Interpreted Geology and Exploration Prospects*

# NAMIBIA

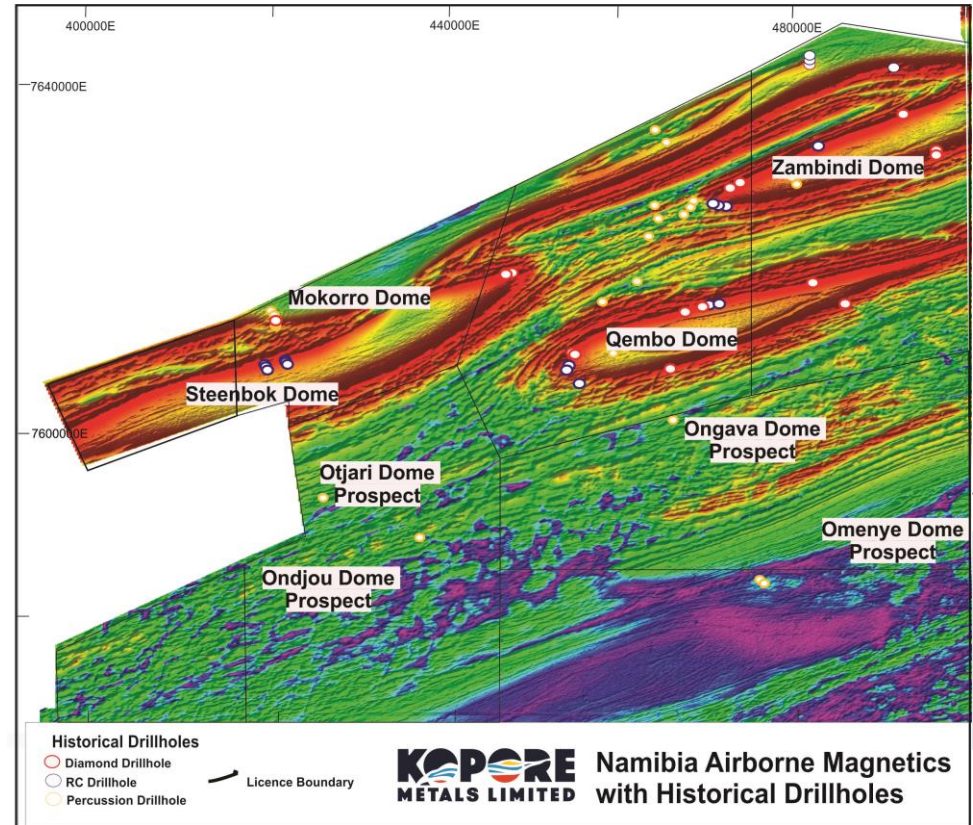
## Confirmed copper system

### OVERVIEW

- Historical Exploration database supplied by the Namibian Department of Mines has accelerated exploration targeting across the newly granted licences and reducing exploration expenses by millions
- New database providing 59 historically drilled percussion, reverse circulation and diamond holes across domal targets, with data acquisition and compilation ongoing.
- Historical information combined with proven discovery techniques on the Kalahari Copper Belt, provides highly prospective targets
- Initial >8,000 historical soil samples under current review for potential Cu-Zn-Pb anomalies
- Reprocessed airborne geophysical data confirmed presence of four Cupric Canyon style domes and four potential subsurface 'intact' domal structures similar to MOD's T3 & A4

### EXPLORATION STRATEGY

- Upon approval the Company will initiate a drill program and airborne EM survey over prioritised targets



*Namibian Licences with geophysics showing interpreted domes and structural corridors*



# PLANNED EXPLORATION ACTIVITIES

Identified exploration targets supports steady newsflow

2018

2019

## BOTSWANA



COMPLETION OF  
GROUND  
MAGNETICS  
AND IDENTIFICATION  
OF SULPHIDE  
TARGETS



COMPLETION OF  
AIRBORNE  
MAGNETICS



GROUND  
GEOPHYSICAL  
PROGRAMS  
NTH KORONG,  
EAST KORONG



SOIL PROGRAMS  
NTH KORONG,  
EAST KORONG,  
S1, S2, S3, S4



TARGETS IDENTIFIED  
FOR EXPLORATION



GOVERNMENT AND  
ENVIRONMENTAL  
APPROVALS



DRILLING PROGRAM  
UNDERWAY  
NTH KORONG,  
KARA DOME



SOIL SAMPLING  
PROGRAM  
VIRGO LICENSE

Q1

GROUND  
GEOPHYSICAL  
PROGRAMS



FURTHER  
EXPLORATION  
THROUGH ONGOING  
DOME & ANOMALY  
IDENTIFICATION

## NAMIBIA

HISTORICAL GOVERNMENT DEPT. DATA PROVIDES  
FAST-TRACKS PROJECT TIMELINE



COMPLETION OF  
GROUND  
MAGNETICS  
AND IDENTIFICATION  
OF SULPHIDE  
TARGETS



COMPLETION OF  
AIRBORNE  
MAGNETICS



GROUND  
GEOPHYSICAL  
PROGRAMS



SOIL PROGRAMS



TARGETS IDENTIFIED  
FOR EXPLORATION



ENVIRONMENTAL  
MANAGEMENT PLAN  
SUBMISSION



GOVERNMENT  
APPROVAL PROCESS



DRILL PROGRAM  
COMMENCEMENT

Q1

GROUND  
GEOPHYSICAL  
PROGRAMS

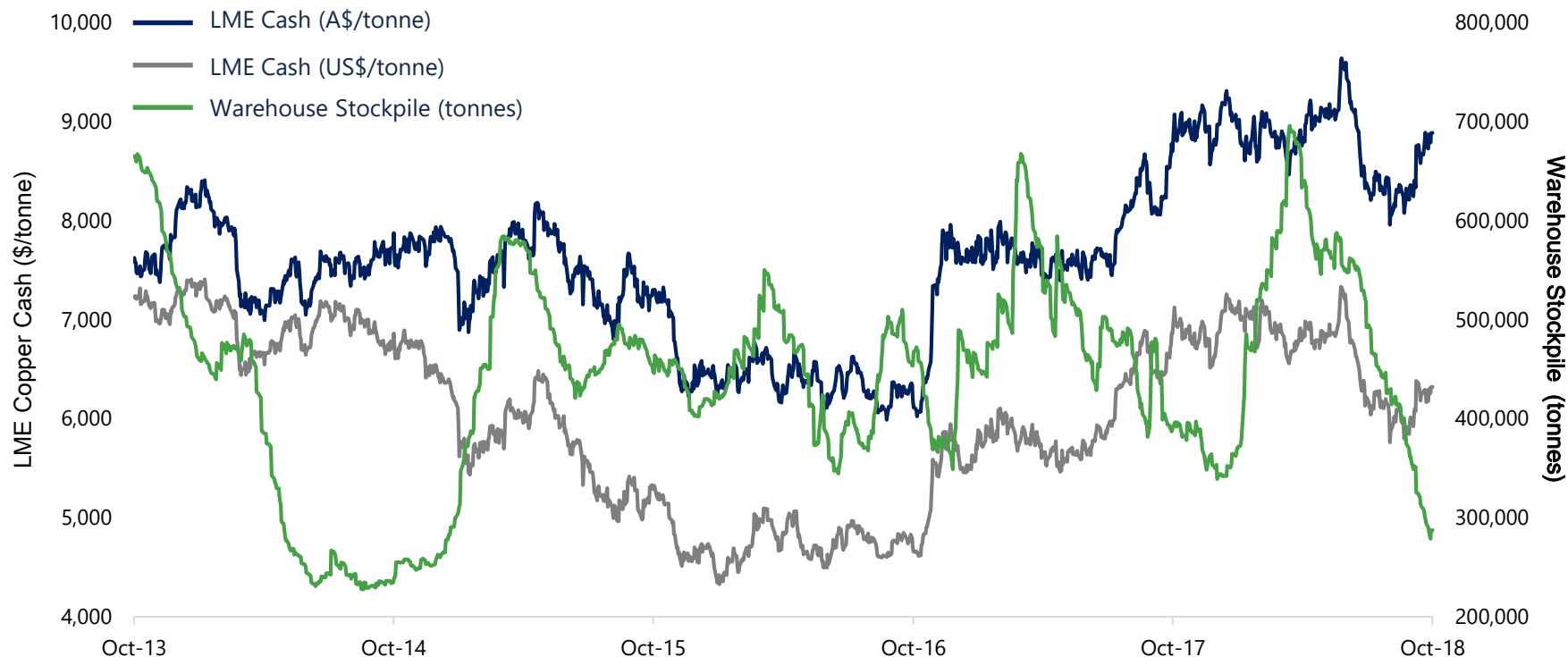


FURTHER  
EXPLORATION  
THROUGH ONGOING  
DOME & ANOMALY  
IDENTIFICATION

# COPPER MARKET OUTLOOK

Copper discovery rates plummet

## Warehouse Stockpiles Approach 4 Year Low<sup>1</sup>



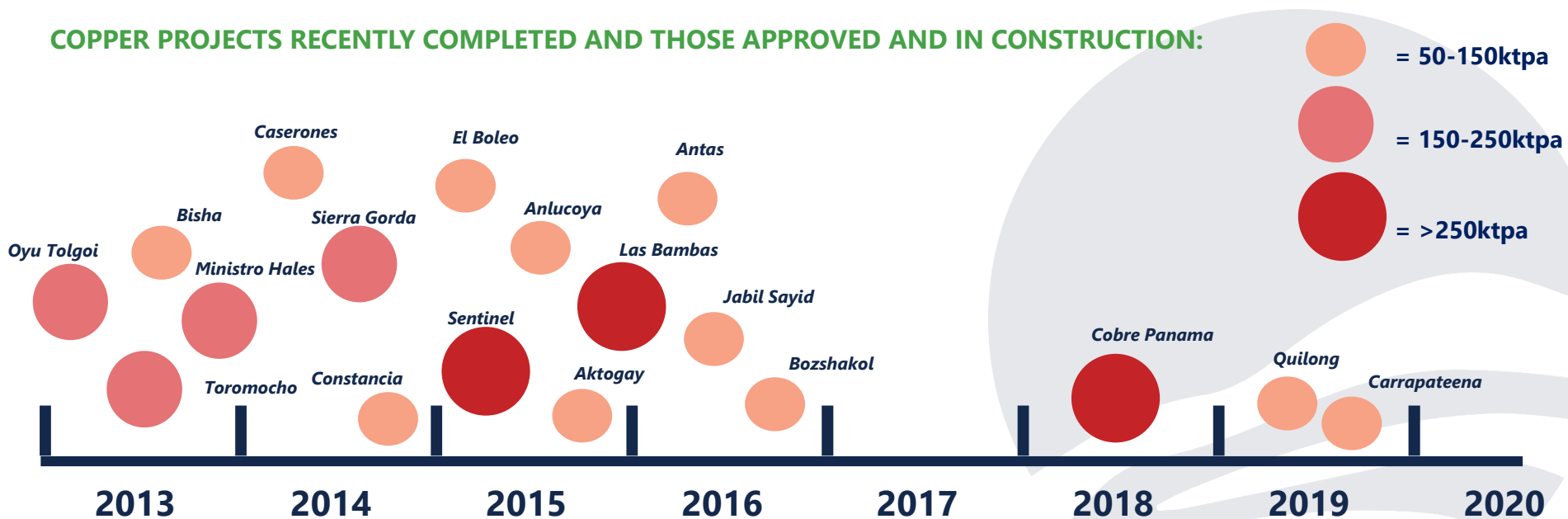
- Copper price outlook remains strong based on fundamentals, despite recent geopolitical uncertainty
- The World Bank expects growth in developing economies to reach 4.5% this year and 4.7% in 2019
- Demand for refined copper increased rapidly throughout the first half of this year, driven primarily by the Chinese construction industry
- A lack of significant copper discoveries will likely cause this supply deficit to exacerbate

# LACK OF GREENFIELD PROJECTS

After recent heavy growth, new mine development has stalled

- ✓ Over recent years, ~15 greenfield copper projects larger than 50ktpa were commissioned.
- ✓ In contrast, only 2 large projects are currently under construction and paired with long greenfield approval lead times, no new significant projects are anticipated to transition into production until at least 2020.
- ✓ This will create a unique opportunity for all near term copper producers that will see a strong uplift in the Cu price resulting from demand exceeding supply.
- ✓ In the past 3 years, capital investment across the major copper players globally fell ~50% from \$28bn to \$14bn.

## COPPER PROJECTS RECENTLY COMPLETED AND THOSE APPROVED AND IN CONSTRUCTION:



Source: Broadhurst Mining



# OUR PATHWAY TO COPPER

---

## **POTENTIAL FOR TIER 1 COPPER DISCOVERIES**

over 7Mt CU & 280Moz Ag within deposits on the Kalahari Copper Belt

## **AGGRESSIVE EXPLORATION**

two RC rigs and a diamond drill rig testing high-priority targets

---

## **BOTSWANA AND NAMIBIA**

stable pro exploration and mining friendly countries, highly ranked African destination for investment

## **FORECASTED GLOBAL SUPPLY DEFICITS**

due to a lack of new projects to meet increasing demand driven primarily by infrastructure and other emerging applications



**KOPORE**  
METALS LIMITED



**[koporemals.com](http://koporemals.com)**

[info@koporemals.com](mailto:info@koporemals.com)

Suite 3, Level 2, 470 Collins Street  
Melbourne, Victoria, Australia 3000

TEL: +61 3 9867 7199  
FAX: +61 3 9867 8587