



# Investor Presentation

Unlocking the East Kimberley

April 2021

**ASX:PKO**



# Forward Looking Statements and Disclosures



## Forward-Looking Statements

This document may contain forward-looking statements. These forward-looking statements are made as of the date of this document and Peako Limited (the Company) does not intend, and does not assume any obligation, to update these forward-looking statements. Forward-looking statements relate to future events or future performance and reflect Company management's expectations or beliefs regarding future events and include, but are not limited to, the Company's strategy, the price of Peako securities, the likelihood of exploration success including results of future geophysical surveys, drilling at the Company's projects and other exploration activities; the timing and costs of future exploration activities on the Company's exploration projects; the potential to define future mineral resources and, if successful at any of the Company's exploration projects, the potential viability of any mineral resource so defined; planned expenditures and budgets and the execution thereof; the timing and availability of drill results; potential sites for drilling, that general business and economic conditions will not change in a materially adverse manner; the timing and amount of estimated future production, costs of production, capital expenditures, success of mining operations, environmental risks, unanticipated reclamation expenses, title disputes or claims and limitations on insurance coverage. In certain cases, forward-looking statements can be identified by the use of words such as "plans", "planning", "expects" or "does not expect", "is expected", "will", "may", "would", "potential", "budget", "scheduled", "estimates", "forecasts", "intends", "prospects" "anticipates" or "does not anticipate", "believes", "occur", "impending", "likely" or "be achieved", or variations of such words and phrases or statements that certain actions, events or results may, could, would, might or will be taken, occur or be achieved or the negative of these terms or comparable terminology. By their very nature forward-looking statements involve known and unknown risks, uncertainties and other factors which may cause the actual results, performance or achievements of the Company to be materially different from any future results, performance or achievements expressed or implied by the forward-looking statements. Such factors may include, among others, risks related to actual results of current or planned exploration activities; changes in exploration programs based upon results of exploration; future prices of commodities; geophysical anomalies may or may not be associated with economic mineralisation; grade or recovery rates; accidents; labour disputes and other risks of the mining industry; delays in obtaining governmental approvals or financing or in the completion of development or construction activities, movements in the share price of Enegex and future proceeds and timing of potential sale Enegex securities, as well as those factors detailed from time to time in the Company's financial statements, all of which are filed and available for review on ASX at [asx.com.au](http://asx.com.au). Although the Company has attempted to identify important factors that could cause actual actions, events or results to differ materially from those described in forward-looking statements, there may be other factors that cause actions, events or results not to be as anticipated, estimated or intended. There can be no assurance that forward-looking statements will prove to be accurate, as actual results and future events could differ materially from those anticipated in such statements. Accordingly, readers should not place undue reliance on forward-looking statements.

## Competent Person and Qualifying Persons Statement

The information in this presentation that relates to Exploration Results and Historical Exploration is based on information compiled or reviewed by Dr Daryl Clark and extracts from the following ASX announcements:

- East Kimberley Project update – 13 November 2020
- East Kimberley Exploration update – 20 August 2020
- Infill RC Sample Results – 30 January 2020
- East Kimberley Drilling Results Extend known Copper-Gold Mineralisation – 28 November 2019
- IP Geophysical Survey to Commence Shortly at Eastman – 15 August 2020

The above announcements are available to view on the Company's website at [peako.com.au](http://peako.com.au). The Company is not aware any new information or data that materially affects the information included in the relevant original market announcements. The Company confirms that the form and context in which the Competent Person and Qualified Person's findings are presented have not been materially modified from the relevant original market announcements.

Dr Clark is a Fellow of the Australasian Institute of Mining and Metallurgy (AusIMM). Dr Clark is a director of and consultant to Peako Limited and has sufficient experience which is relevant to the style of mineralisation and type of deposits under consideration and to the activity which he is undertaking to qualify as a Competent Person as defined in the 2012 Edition of the Australasian Code for Reporting of Exploration Results, Mineral Resources and Ore Reserves. Dr Clark consents to the inclusion in this presentation of the matters based on information reviewed by him and in the form and context in which it appears.

# Company Overview



## Our Team

### Geoff Albers – Chairman

40+ years resources industry veteran with track record of success as an investor, entrepreneur and company director.

### Dr Darryl Clark – Technical Director

25+ years experience as exploration geologist with previous corporate roles at Vale and BHP. Experienced at designing & delivering multi-commodity exploration programs and coordination of exploration teams to deliver discovery events.

### Rae Clark – Executive Director

15+ years ASX resources company director. Experienced at business development, M&A and project management. Successful financing > \$100M.

### Dr Robina Sharpe – Chief Geoscientist

Exploration geoscientist with 28+ years of research and industry experience focused on generation of new exploration opportunities in gold and base metal deposits in Australia, western Pacific, Africa, Mexico and South America.

### Michael Blake - Project Geologist

Exploration geologist with 20+ years executing programs across multiple commodities and mineralisation styles including orogenic gold and epithermal low-sulphidation deposits.

CASH (31/3/21)

\$800k

SHARES ON ISSUE

192 million\*

MARKET CAP

\$6.1M

DEBT (31/3/21)

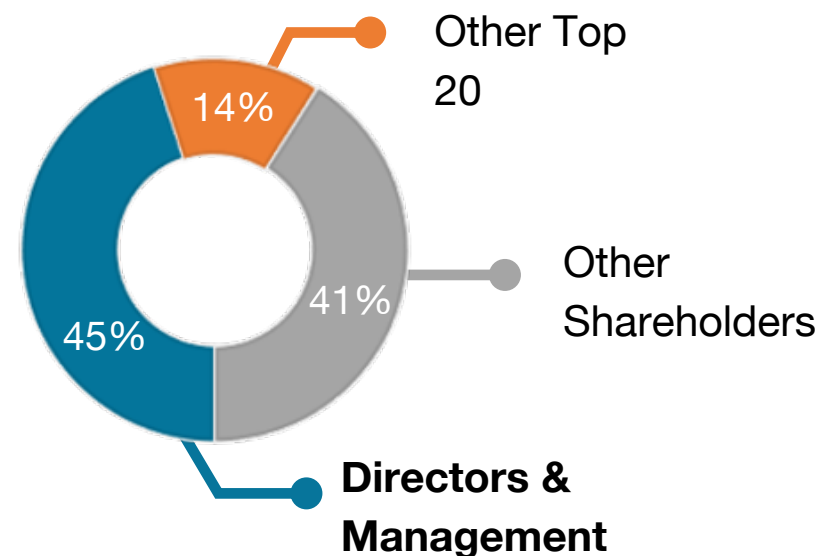
nil

JMEI CREDITS

\$450k

WA EIS GRANT

\$320k



\*+ ~30.2m unlisted options expiring 30/06/2022 @ \$0.055  
& 22.5m incentive options with various expiries and strike.

# Flagship East Kimberley Projects



Large & strategic 1,950 km<sup>2</sup> tenement holding (100% owned) with potential to host tier-1 discovery.



Multiple commodities & deposit style endowment including *Gold, Copper-Lead-Zinc and Nickel-PGE*.



\$5m of historical exploration data captured by Peakco including 56,000m+ of drilling and geophysical surveys.



Substantial gold presence historically detected but not consistently assayed or followed up.



80+ targets identified to date.  
9 areas comprising 29 targets prioritised for testing



Cost effective exploration and rapid analysis enabled by advanced data-driven methodology.



Testing targets commencing May subsidised by \$320k EIS government funding.





## FIRST MOVER ADVANTAGE

Dominant land holding secured in the East Kimberley and within the Halls Creek Orogen - one of the least explored ancient Proterozoic basins despite multiple indicators for potential discoveries.

## LEVERAGE DATA

\$5m+ of historical exploration data, modern database tools and the acquisition of Worldview-3 spectral data enables advanced understanding of regional geology and ongoing generation of new targets.

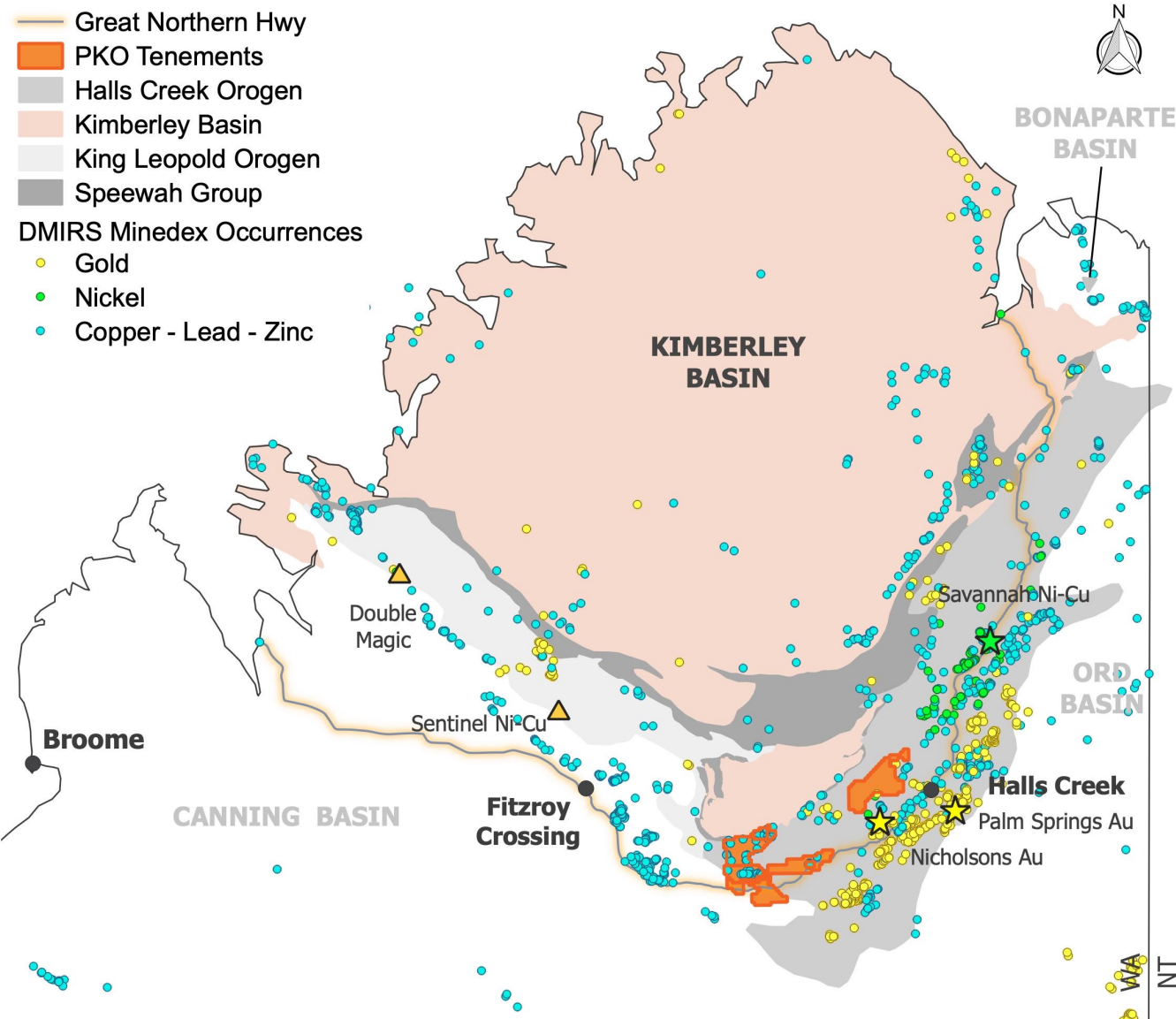
## MULTI-COMMODITY FOCUS

Historical exploration confirms the presence of copper, nickel, gold, zinc, platinum and palladium. Defined targets across multiple mineralisation styles including orogenic to intrusion related gold systems, and Ni-Pt-Pd endowed ultramafic sequences.

## INVESTING IN EXPLORATION

29 targets prioritised for imminent on-ground follow-up (April). Geochemical drilling (May) to underpin drill testing in H2 2021.

# East Kimberley: The Right Location



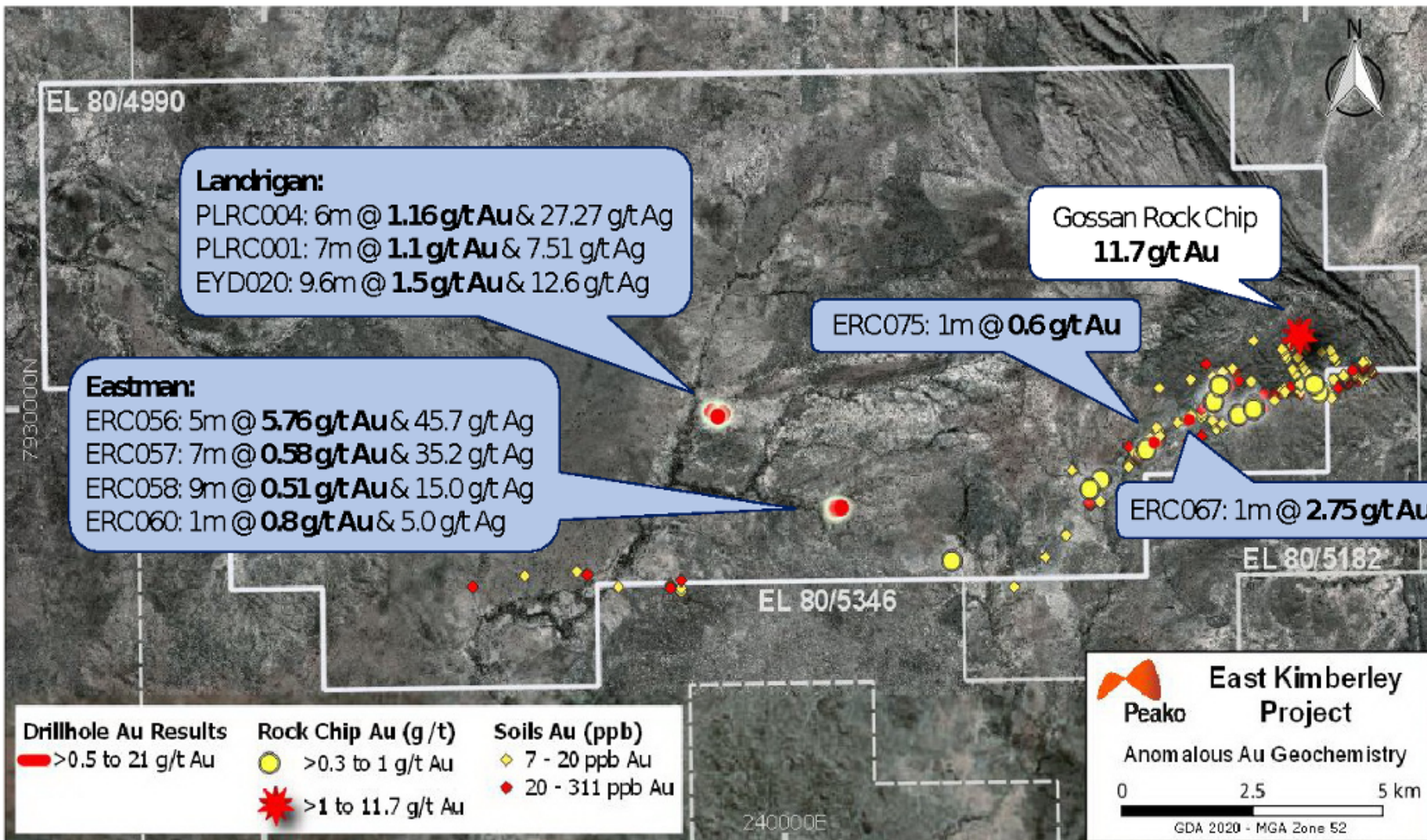
## Why East Kimberley?

- One of the least explored Paleoproterozoic provinces in Australia.
- Wide variety of mineral deposit types developed over the region's 1.9 billion year history
- ~260 documented gold occurrences across the region.

## Our Opportunity

- Peakco's SW tenure covers a unique area at the junction of the King Leopold Orogen and Halls Creek Orogen.
- Tenement package historically fragmented with diverging commodity strategies and sporadically explored **now unified under single owner allowing for systematic exploration.**
- Multiple mineralisation styles identified including lode, shear zone to intrusion-related gold systems and magmatic Cu-Ni, chromite-hosted Pt & Pd in ultramafics that underpin our **multi-commodity discovery strategy**
- Peakco's NE tenure in the central Halls Creek Orogen is nearby to multiple gold projects (Palms Springs, Nicholsons, etc.)

# Latent Gold Potential Confirmed



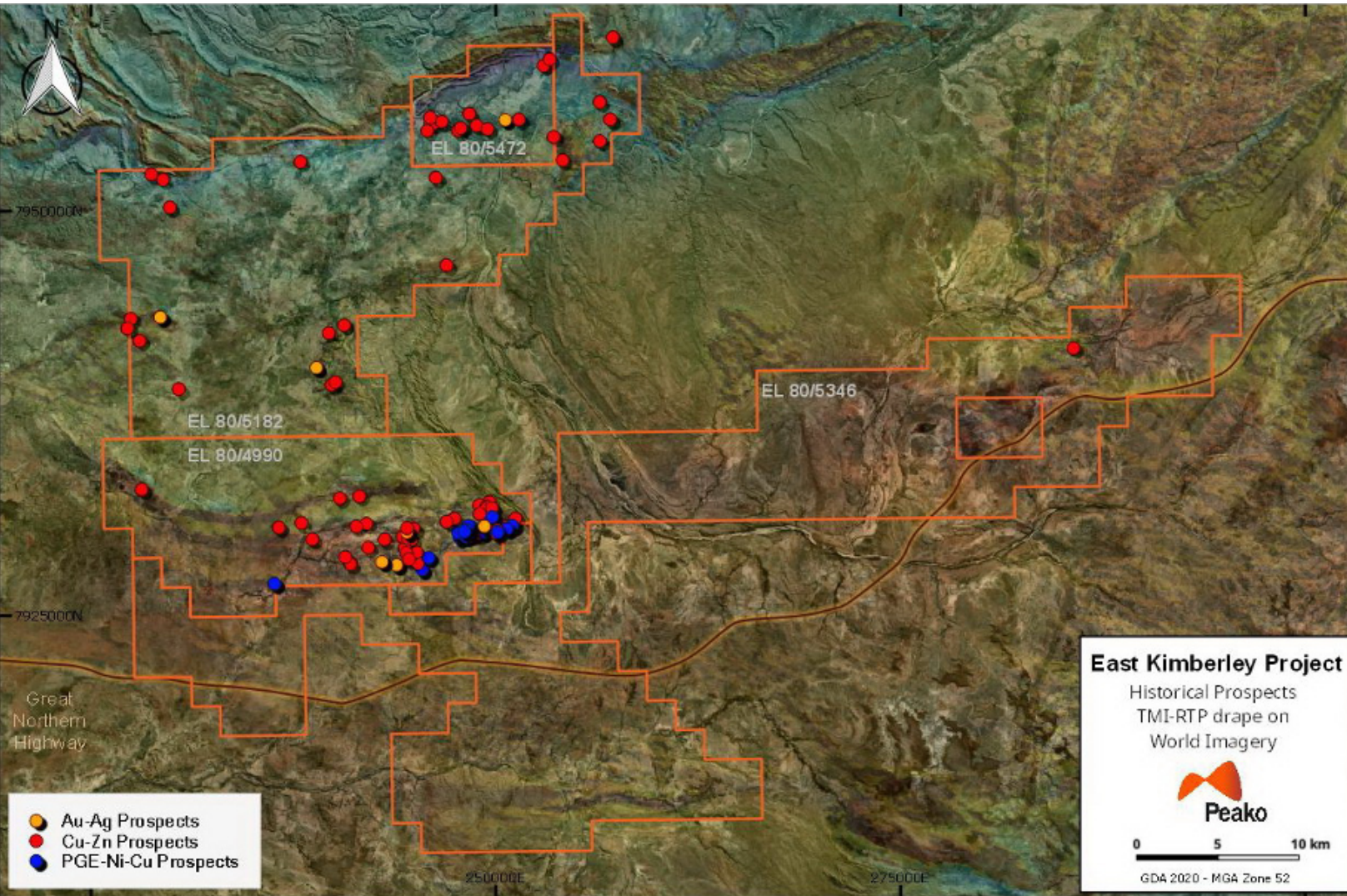
- Analysis of past exploration data confirms widespread gold endowment.
- Substantial discovery opportunity given past explorers did not focus on gold.
- Majority of drilling did not assay for gold.



**Opportunity for us to discover underlying gold & polymetallic structures**



# Unlocking Value from Historical Exploration Data



**\$5m+ historical exploration data captured from 12 explorers over 50+ years**

- 5,000m diamond
- 13,500m RC
- 38,000m RAB
- 800+ rock samples
- 7,000 soil samples
- 285+ steam samples,
- Mag-rad, VTEM, and IP



**Creation of single geological domain dataset to lower exploration costs and shortcut discovery timeframe**

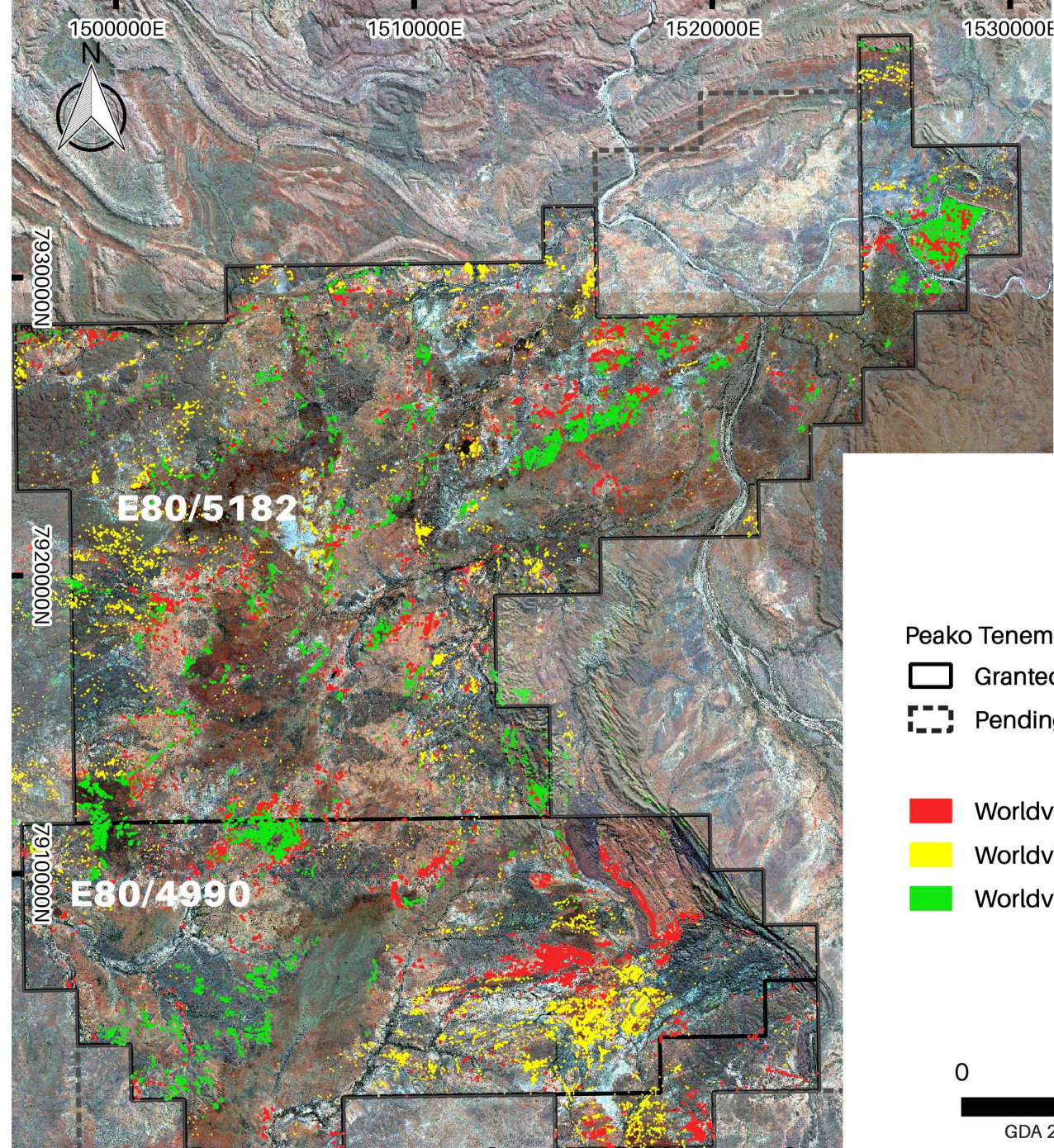


# Leveraging New Data

- Worldview-3 highest resolution broad range spectral data
- Advanced geoscientific processing enables
  - discrimination of geology, alteration and structures in spectral regions
  - mapping at scales not previously possible
  - targeting of mineralisation styles
  - streamline work planning for sampling & drilling



**Rapid, cost-effective method to identify targets at scale prior to field exploration.**






## East Kimberley Project

Exploration Mapping  
Inc. Worldview3  
Short Wave Infrared  
(SWIR) Alteration  
Analysis

### Peako Tenements

-  Granted
-  Pending

-  Worldview3 - Alteration Hotspot A
-  Worldview3 - Alteration Hotspot B
-  Worldview3 - Alteration Hotspot C



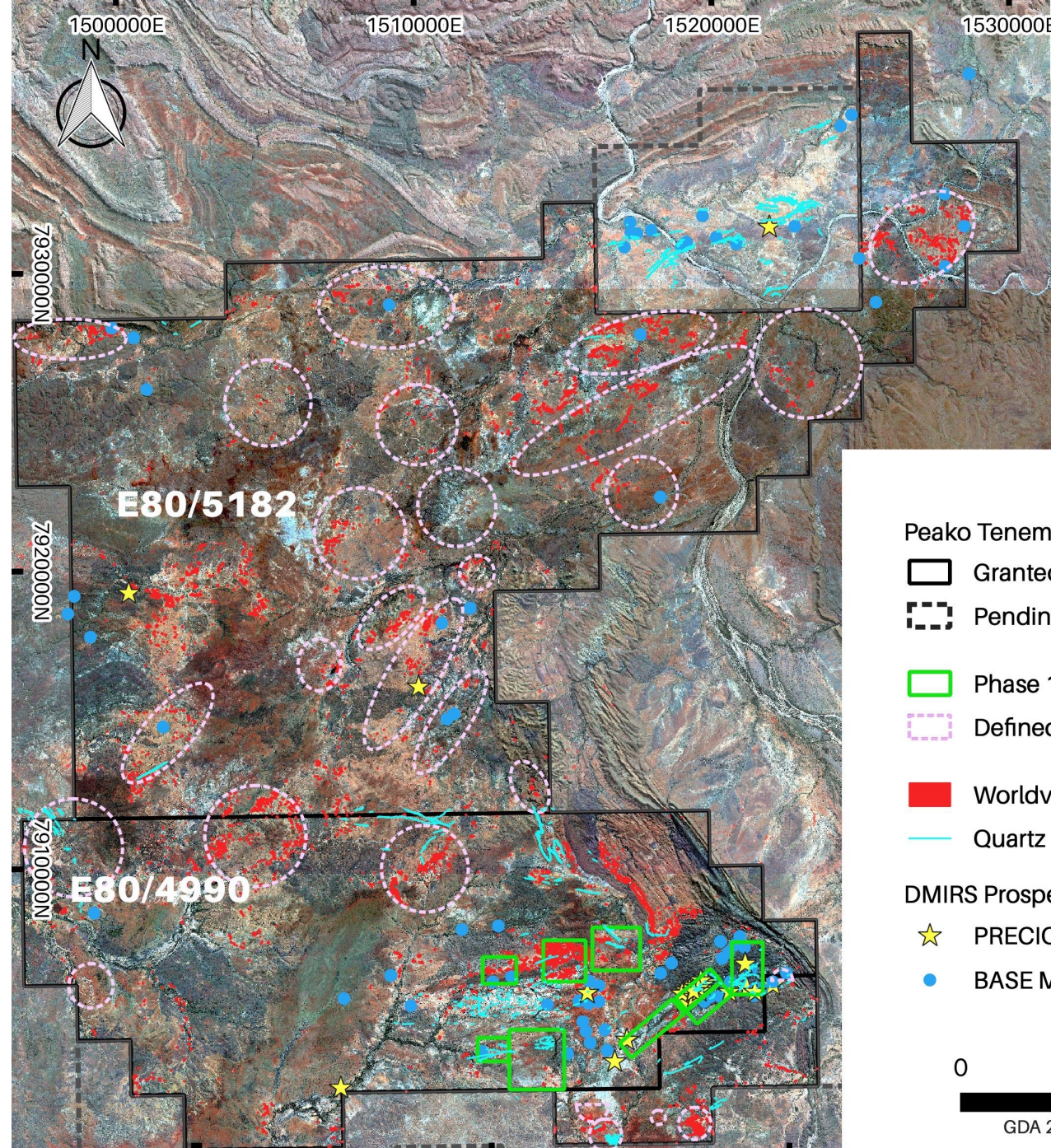
# Advancing a world class opportunity

## 80 polymetallic targets generated to date

- 29 high priority targets across 9 prospect areas at E80/4990
- Extensive new target pipeline in E80/5182
- Targets incorporate a range of prospective geological features including:
  - anomalous gold geochemistry (soil, rock, drilling)
  - geophysics (VTEM, magnetics)
  - prospective structure
  - spectral imagery alteration indicators



**Multiple styles of mineralisation known to host gold, copper-nickel, platinum and palladium**



## East Kimberley Project

2021 Priority Targets and Leads

### Peako Tenements

- Granted
- Pending

- Phase 1 Testing Targets
- Defined Leads for Reconnaissance

- Worldview3 - Alteration Hotspot A
- Quartz Vein Systems

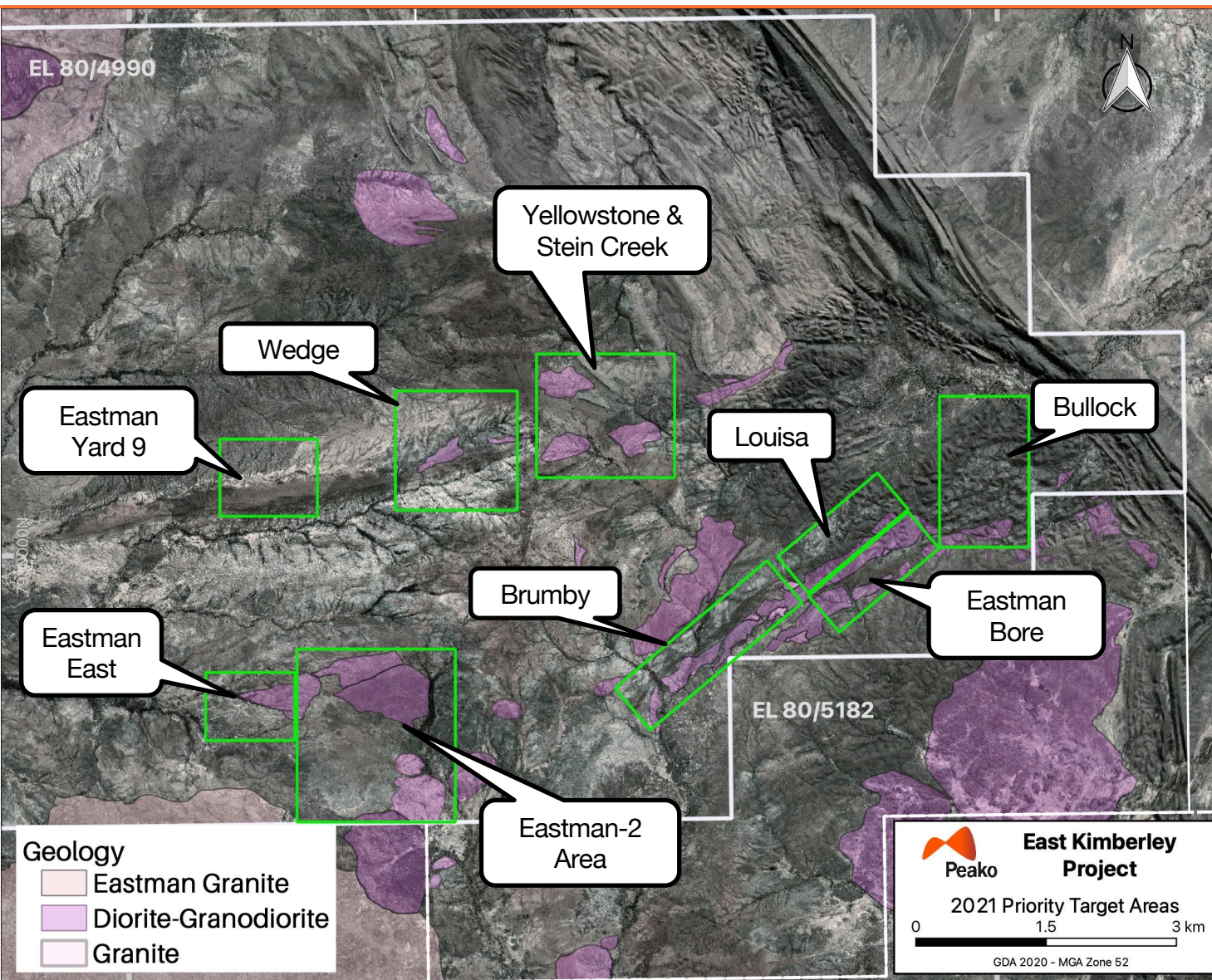
### DMIRS Prospect Locations

- PRECIOUS METAL
- BASE METAL





# Drilling Imminently



## Phase 1 - Aircore Geochem Testing (May)

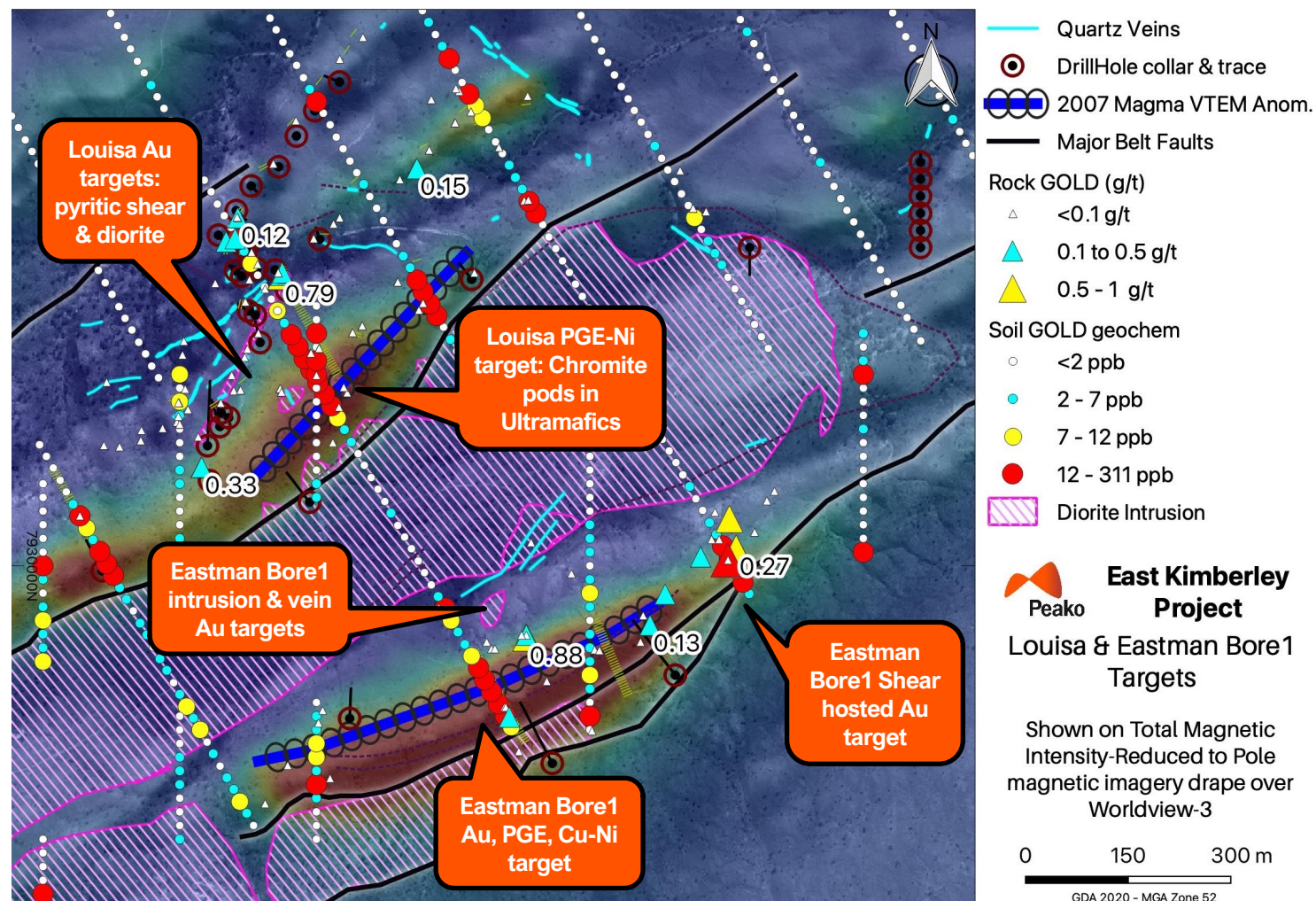
- 6,000m+ with 100-200m nominal line spacings over prioritised targets.
- Drilling to define drill targets and assist with geological modelling in preparation for phase 2 drilling in 2H 2021.

## Phase 2 - Drilling (2H 2021)

- Program to comprise testing of:
  - Defined targets (via historic datasets) building on shallow and precursory drilling by past operators.
  - Targets with encouraging aircore results from phase 1 geochem testing program.



# Priority targets for testing: Louisa + Eastman Bore 1

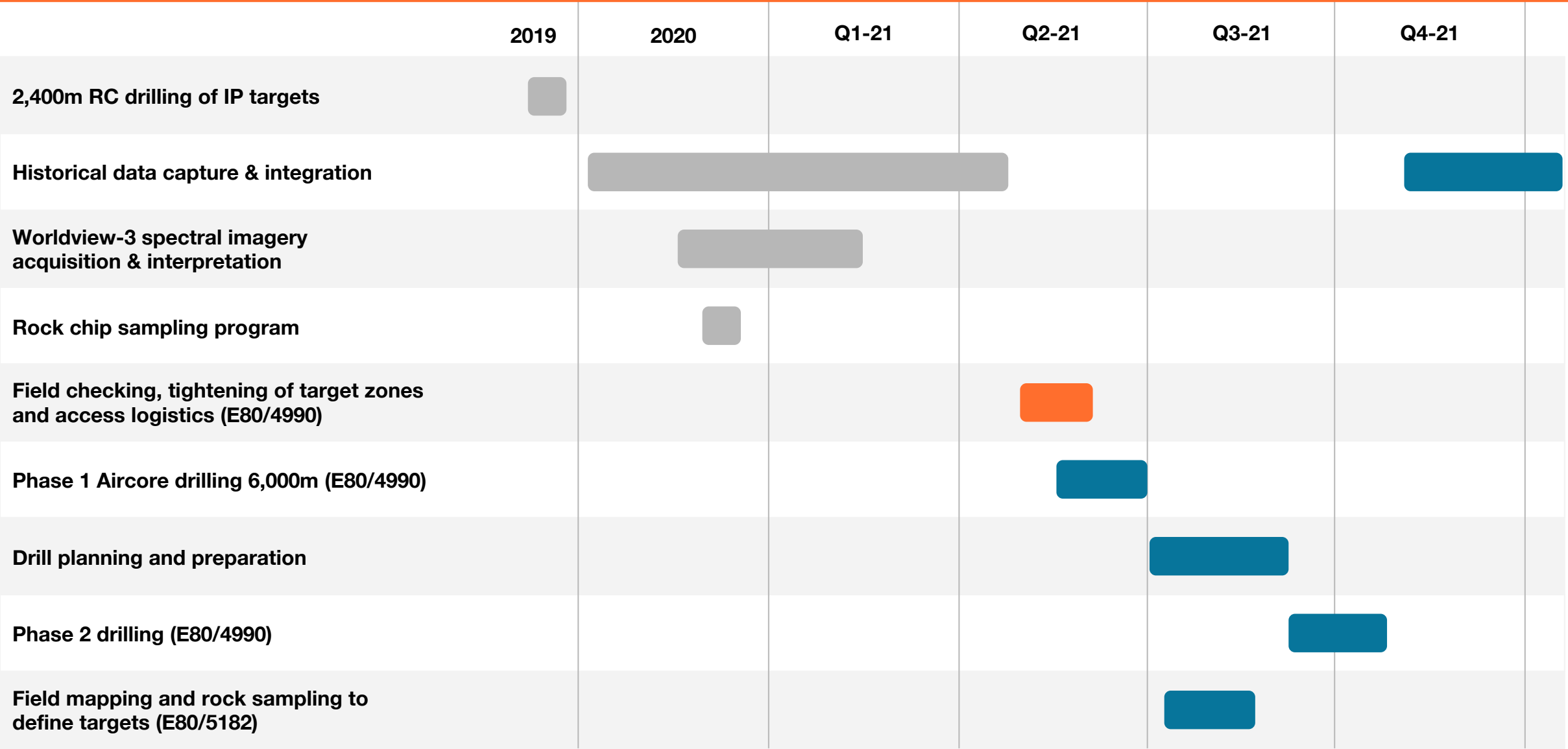


- Defined targets directed to test a number of mineralisation styles including gold related to intrusions & shear zones, as well as magmatic Cu-Ni and chromite-hosted Pt & Pd potential.
- Hosted within the Lamboo Ultramafic Belt that is intruded by diorite/granodiorite
- Defined by Anomalous Au geochemistry (rock & soil)
- Coincident with magnetic high and untested 2007 VTEM anomalies
- Magnetic targets also affiliated with anomalous Pt, Pd, Cu & Ni values in historical soil and rock geochemistry
- Vein and shear zone hosted intrusions with abundant pyrite (indicator for potential Au mineralisation) in historic drilling at Louisa **not analysed for AU**



# Exploration Plan

Completed In progress Planned





# Investor Contact

---

**Rae Clark**  
Executive Director

[info@peako.com.au](mailto:info@peako.com.au)

[www.peako.com.au](http://www.peako.com.au)



## Historical geochemical sampling at Louisa and Eastman Bore-1 prospect areas

The following historical rock chip and soil sampling results have been compiled from open file WAMEX data. All coordinates have been converted to GDA2020/MGA Zone 52).

Table A: Historical Rock Chip Sample Details

Table B: Historical Soil Sample Details

JORC Code (2012) Table 1

**Table A: Rock Chip Samples**

SampleID	Easting m	Northing m	Company	Year	WAMEX Ref	Au_ppm	Ag_ppm	As_ppm	Cu_ppm	Ni_ppm	Pd_ppm	Pt_ppm
	248933	7930580	Inco. Australasia Limited	1982	A11116	0.04			14000	41	0	0
	248765	7930033	Inco. Australasia Limited	1982	A11116				230	51	0	0.03
	248383	7929490	Inco. Australasia Limited	1982	A11116				290	67	0	0
	247713	7930277	Inco. Australasia Limited	1982	A11116				185	178	0	0.04
	248045	7930092	Inco. Australasia Limited	1982	A11116				800	193	0.14	0.07
	247746	7929810	Inco. Australasia Limited	1982	A11116				150	520	0	0
	248776	7930014	Inco. Australasia Limited	1982	A11116				215	690	0.03	0.1
	248473	7929738	Inco. Australasia Limited	1982	A11116				40	860	0.22	0.27
	247732	7929835	Inco. Australasia Limited	1982	A11116				115	860	0.09	0.16
	247588	7929784	Inco. Australasia Limited	1982	A11116				35	860	0.11	0.13
	249004	7930016	Inco. Australasia Limited	1982	A11116				550	880	0.14	0.23
	248389	7930296	Inco. Australasia Limited	1982	A11116				29	880	0.08	0.13
	249103	7929839	Inco. Australasia Limited	1982	A11116				1500	920	0.18	0.22
	248051	7930082	Inco. Australasia Limited	1982	A11116				39	940	0.72	0.19
	248651	7929828	Inco. Australasia Limited	1982	A11116				31	960	0.09	0.16
	248050	7930083	Inco. Australasia Limited	1982	A11116				54	960	0.24	0.3
	249518	7930324	Inco. Australasia Limited	1982	A11116				152	1050	1.57	1.34
	248525	7929646	Inco. Australasia Limited	1982	A11116				155	1050	0.19	0.26
	248422	7929829	Inco. Australasia Limited	1982	A11116				640	1050	1.25	0.44
	248205	7930215	Inco. Australasia Limited	1982	A11116				355	1050	0.81	0.54
	248850	7929882	Inco. Australasia Limited	1982	A11116				140	1150	0.24	0.2
	248772	7930020	Inco. Australasia Limited	1982	A11116				520	1200	0.2	0.3
	248579	7929957	Inco. Australasia Limited	1982	A11116				168	1250	0.046	0.45
	247914	7929918	Inco. Australasia Limited	1982	A11116				265	1250	0.32	0.22
	247745	7929834	Inco. Australasia Limited	1982	A11116				105	1250	1.2	0.9
	248847	7929887	Inco. Australasia Limited	1982	A11116				18	1300	1.27	0.44
	248679	7929784	Inco. Australasia Limited	1982	A11116				7900	1350	0.52	0.21
	248270	7929675	Inco. Australasia Limited	1982	A11116				56	1350	0.3	0.18
	248639	7930666	Inco. Australasia Limited	1982	A11116				610	1400	2.52	1.22
	248340	7930413	Inco. Australasia Limited	1982	A11116				1700	1400	0.24	0.2
	248049	7930085	Inco. Australasia Limited	1982	A11116				150	1450	1.18	0.67
	248664	7929805	Inco. Australasia Limited	1982	A11116				15500	1550	0.48	0.12
	248417	7929838	Inco. Australasia Limited	1982	A11116				275	1600	1.42	0.87
	248391	7930292	Inco. Australasia Limited	1982	A11116				138	1800	1.02	0.51
	249004	7930016	Inco. Australasia Limited	1982	A11116	0.04			12000	1900	0.04	0.25
	248303	7930449	Inco. Australasia Limited	1982	A11116				285	1900	2.06	1.06



SampleID	Easting m	Northing m	Company	Year	WAMEX Ref	Au_ppm	Ag_ppm	As_ppm	Cu_ppm	Ni_ppm	Pd_ppm	Pt_ppm
	248440	7929797	Inco. Australasia Limited	1982	A11116				76	1950	0.53	0.87
	248206	7930213	Inco. Australasia Limited	1982	A11116				64	2000	2	0.9
	248306	7930433	Inco. Australasia Limited	1982	A11116				162	2100	2.3	1.28
	248393	7930288	Inco. Australasia Limited	1982	A11116				380	2300	0.86	0.14
	248398	7930708	Inco. Australasia Limited	1982	A11116					2360	2.9	1.61
	248205	7930214	Inco. Australasia Limited	1982	A11116				225	2800	3.6	2.68
	249579	7930999	Inco. Australasia Limited	1982	A11116	0.09			90	21000	0.05	0
22437	248213	7930227	Freeport of Australia Inc	1984	A17481	0.042					0.782	0.714
22438	248228	7930191	Freeport of Australia Inc	1984	A17481	0.007					0.417	0.56
22439	248282	7930478	Freeport of Australia Inc	1984	A17481	0.164					1.33	0.736
22440	248306	7930460	Freeport of Australia Inc	1984	A17481	0.011					0.695	0.356
22441	248303	7930425	Freeport of Australia Inc	1984	A17481	0.03					0.364	0.24
22449	248410	7929793	Freeport of Australia Inc	1984	A17481	0.022					0.029	0.039
22450	248911	7929963	Freeport of Australia Inc	1984	A17481	0.238			101000	4360	0.068	0.135
22451	248979	7930043	Freeport of Australia Inc	1984	A17481	0.018					0.074	0.55
22452	249005	7930072	Freeport of Australia Inc	1984	A17481	0.501			73500	2030	0.036	0.058
22453	248984	7930078	Freeport of Australia Inc	1984	A17481	0.09			160	1600	0.312	0.78
	248055	7930075	Freeport of Australia Inc	1984	A17481	0.076				0	1.1	0.51
3905_R	249508	7930748	Helix Resources NL	1987	A21972			18	810	40	0.001	0
3906_R	249513	7930739	Helix Resources NL	1987	A21972			18	825	40	0.002	0
3907_R	249518	7930731	Helix Resources NL	1987	A21972	0.015		5	200	40	0	0
3908_R	249519	7930729	Helix Resources NL	1987	A21972			5	160	40	0.002	0
3909_R	249521	7930726	Helix Resources NL	1987	A21972			13	810	60	0.001	0
3910_R	249522	7930724	Helix Resources NL	1987	A21972			9	235	40	0	0
3911_R	249535	7930700	Helix Resources NL	1987	A21972			9	225	40	0.001	0
3912_R	249537	7930697	Helix Resources NL	1987	A21972			9	160	45	0.002	0
3913_R	249538	7930695	Helix Resources NL	1987	A21972			5	175	55	0.002	0.006
3914_R	249549	7930676	Helix Resources NL	1987	A21972			28	155	715	0.052	0.096
3915_R	249563	7930651	Helix Resources NL	1987	A21972	0.005		15	700	755	0.01	0.024
3916_R	249565	7930648	Helix Resources NL	1987	A21972			2	180	80	0.004	0
3917_R	249342	7930561	Helix Resources NL	1987	A21972			50	140	685	0.015	0.007
3935_R	248689	7930577	Helix Resources NL	1987	A21972			2	165	25	0	0
3936_R	248683	7930580	Helix Resources NL	1987	A21972			14	1550	50	0	0
3937_R	248668	7930614	Helix Resources NL	1987	A21972	0.01		3	490	20	0.002	0
3938_R	248627	7930666	Helix Resources NL	1987	A21972			9	545	850	0.016	0.036
3939_R	248627	7930666	Helix Resources NL	1987	A21972	0.01		22	880	690	0.034	0.083

SampleID	Easting m	Northing m	Company	Year	WAMEX Ref	Au_ppm	Ag_ppm	As_ppm	Cu_ppm	Ni_ppm	Pd_ppm	Pt_ppm
3940_R	248627	7930666	Helix Resources NL	1987	A21972	0.015		17	200	850	0.092	0.162
3941_R	248627	7930666	Helix Resources NL	1987	A21972			5	185	750	0.009	0.041
3942_R	248627	7930666	Helix Resources NL	1987	A21972			3	260	705	0.005	0.012
3943_R	248610	7930696	Helix Resources NL	1987	A21972	0.005		5	1750	310	0.004	0
3944_R	248605	7930700	Helix Resources NL	1987	A21972	0.005		8	675	150	0.006	0.008
3945_R	248569	7930684	Helix Resources NL	1987	A21972	0.005		6	890	135	0.005	0.009
3946_R	248473	7930207	Helix Resources NL	1987	A21972			3	7	950	0.17	0.2
3947_R	248446	7930255	Helix Resources NL	1987	A21972	0.01		2	15	740	0.062	0.08
3948_R	248446	7930255	Helix Resources NL	1987	A21972			2	20	780	0.129	0.131
3949_R	248441	7930263	Helix Resources NL	1987	A21972	0.015		0	10	620	0.005	0.057
3950_R	248434	7930276	Helix Resources NL	1987	A21972			2	145	380	0.003	0.012
3951_R	248371	7930388	Helix Resources NL	1987	A21972			5	80	90	0.001	0
3952_R	248362	7930404	Helix Resources NL	1987	A21972			2	35	65	0.001	0
3953_R	248361	7930406	Helix Resources NL	1987	A21972	0.01		47	2100	190	0.003	0
3954_R	248353	7930420	Helix Resources NL	1987	A21972	0.005		7	40	1850	1.4	0.608
3955_R	248353	7930421	Helix Resources NL	1987	A21972			2	20	1000	0.2	0.26
3956_R	248352	7930422	Helix Resources NL	1987	A21972			4	45	1600	0.2	0.46
3957_R	248326	7930407	Helix Resources NL	1987	A21972	0.01		4	185	1350	0.429	0.458
3958_R	248350	7930426	Helix Resources NL	1987	A21972	0.79		3	5000	2100	1.53	0.949
3959_R	248349	7930427	Helix Resources NL	1987	A21972	0.2		3	785	2450	1.85	1.25
3960_R	248330	7930461	Helix Resources NL	1987	A21972			5	130	165	0.013	0.025
3961_R	248315	7930443	Helix Resources NL	1987	A21972	0.05		3	120	1600	1.04	0.496
3962_R	248297	7930388	Helix Resources NL	1987	A21972	0.025		4	175	1350	1.7	1.77
3963_R	248269	7930476	Helix Resources NL	1987	A21972	0.22		4	445	1500	1.18	0.945
3964_R	248287	7930509	Helix Resources NL	1987	A21972	0.015		5	185	1700	0.162	0.14
3965_R	248287	7930510	Helix Resources NL	1987	A21972	0.03		1	210	1650	0.72	0.33
3966_R	248287	7930510	Helix Resources NL	1987	A21972			9	300	1400	0.015	0.04
3967_R	248286	7930511	Helix Resources NL	1987	A21972	0.09		12	1000	1250	0.123	0.13
3968_R	248286	7930511	Helix Resources NL	1987	A21972	0.02		1	50	1000	0.235	0.29
3969_R	248286	7930511	Helix Resources NL	1987	A21972	0.095		5	475	1200	0.615	0.515
3970_R	248286	7930511	Helix Resources NL	1987	A21972	0.12		4	380	1750	1.29	0.952
3971_R	248286	7930511	Helix Resources NL	1987	A21972	0.01		18	1100	1800	1.28	0.486
3972_R	248285	7930512	Helix Resources NL	1987	A21972	0.04		7	720	1650	0.035	0.033
3973_R	248338	7930590	Helix Resources NL	1987	A21972	0.075		1	65	2150	0.052	0.02
3974_R	248371	7930653	Helix Resources NL	1987	A21972	0.005		2	15	1650	0.575	0.025
3975_R	248435	7930743	Helix Resources NL	1987	A21972	0.02		2	245	1400	1.95	0.715

SampleID	Easting m	Northing m	Company	Year	WAMEX Ref	Au_ppm	Ag_ppm	As_ppm	Cu_ppm	Ni_ppm	Pd_ppm	Pt_ppm
3976_R	248469	7930775	Helix Resources NL	1987	A21972	0.025		2	120	2100	1	0.66
3977_R	248526	7930820	Helix Resources NL	1987	A21972	0.01		3	1505	185	0.8	0.57
3978_R	248710	7930689	Helix Resources NL	1987	A21972	0.025		2	465	1000	0.12	0.17
3979_R	248523	7930567	Helix Resources NL	1987	A21972	0.005		70	550	730	0.009	0.032
3980_R	249503	7930310	Helix Resources NL	1987	A21972			2	45	1400	0.55	0.22
4022_R	249600	7930931	Helix Resources NL	1987	A21972	0.15		270	265000	55	0.048	0.006
20905_R	248425	7930182	Pancontinental Mining Limited	1989	A26346	0.012				32	0.13	0.089
97074_R	249614	7930733	Pancontinental Mining Limited	1989	A26346	0.05				75	0.75	0.63
25014_R	247749	7929830	Navigator Resources Ltd	2003	A68201	0.016			126	1241	0.024	0.047
25015_R	247749	7929782	Navigator Resources Ltd	2003	A68201	0.006			36	141	0.01	0.026
25016_R	248676	7929795	Navigator Resources Ltd	2003	A68201	0.028			82	1536	0.643	0.42
25017_R	248685	7929782	Navigator Resources Ltd	2003	A68201	0.052			50354	1710	0.34	0.207
25018_R	248678	7929795	Navigator Resources Ltd	2003	A68201	0.035			2710	1406	0.162	0.155
25019_R	248738	7929833	Navigator Resources Ltd	2003	A68201	0.016			550	1846	0.362	0.322
25020_R	248808	7929879	Navigator Resources Ltd	2003	A68201	0.008			95	1123	0.051	0.188
25021_R	248815	7929878	Navigator Resources Ltd	2003	A68201	0.028			31682	1439	0.099	0.051
25022_R	248889	7929915	Navigator Resources Ltd	2003	A68201	0.134			166909	1840	0.185	0.199
25023_R	248879	7929929	Navigator Resources Ltd	2003	A68201	0.018			650	1121	0.119	0.21
25024_R	248963	7930015	Navigator Resources Ltd	2003	A68201	0.111			12972	851	0.028	0.047
25025_R	249024	7930009	Navigator Resources Ltd	2003	A68201	0.016			154	1534	0.445	0.453
25026_R	249015	7930027	Navigator Resources Ltd	2003	A68201	0.265			6043	1693	0.498	0.546
25027_R	249015	7930027	Navigator Resources Ltd	2003	A68201	0.61			100223	2564	0.108	0.127
25028_R	249060	7930097	Navigator Resources Ltd	2003	A68201	0.042			683	189	0.08	0.053
25029_R	249071	7930111	Navigator Resources Ltd	2003	A68201	0.017			2786	1048	0.122	0.189
25030_R	249042	7930051	Navigator Resources Ltd	2003	A68201	0.013			125	873	0.091	0.172
25031_R	248421	7929691	Navigator Resources Ltd	2003	A68201	0.028			1005	1317	0.102	0.134
25032_R	248404	7929772	Navigator Resources Ltd	2003	A68201	0.031			197	1933	1.031	0.817
25033_R	248359	7929710	Navigator Resources Ltd	2003	A68201	0.013			490	2494	0.329	0.243
25034_R	248326	7929654	Navigator Resources Ltd	2003	A68201	0.008			84	390	0.119	0.1
28011_R	247642	7929817	Navigator Resources Ltd	2003	A68201	0.003			120	1068	0.05	0.158
99901_R	248280	7930258	Navigator Resources Ltd	2003	A68201	0.054			156	1404	1.15	1.692
EA001	248603	7930649	Navigator Resources Ltd	2003	A68201	0.007			488	849	0.076	0.117
EA002	248604	7930650	Navigator Resources Ltd	2003	A68201	0.005			271	1153	0.004	0.013
EA003	248548	7930583	Navigator Resources Ltd	2003	A68201	0.146			235	1377	0.939	0.832
EA004	248566	7930610	Navigator Resources Ltd	2003	A68201	0.013			219	894	0.064	0.114
EA005	248434	7930510	Navigator Resources Ltd	2003	A68201	0.007			146	704	0.036	0.035

SampleID	Easting m	Northing m	Company	Year	WAMEX Ref	Au_ppm	Ag_ppm	As_ppm	Cu_ppm	Ni_ppm	Pd_ppm	Pt_ppm
EA006	248426	7930502	Navigator Resources Ltd	2003	A68201	0.006			782	999	0.02	0.056
EA007	248426	7930502	Navigator Resources Ltd	2003	A68201	0.006			490	602	0.01	0.016
EA008	248316	7930342	Navigator Resources Ltd	2003	A68201	0.042			268	1892	1.057	0.672
EA009	248300	7930319	Navigator Resources Ltd	2003	A68201	0.03			447	1714	0.367	0.355
EA010	248296	7930307	Navigator Resources Ltd	2003	A68201	0.007			9	1030	0.219	0.287
EA011	248290	7930259	Navigator Resources Ltd	2003	A68201	0.008			41	1082	0.234	0.448
EA012	248279	7930257	Navigator Resources Ltd	2003	A68201	0.05			156	1404	1.144	1.649
EA013	248261	7930240	Navigator Resources Ltd	2003	A68201	0.01			371	1085	0.146	0.176
EA014	248144	7930185	Navigator Resources Ltd	2003	A68201	0.01			111	1326	0.567	0.683
EA015	248176	7930203	Navigator Resources Ltd	2003	A68201	0.009			156	1360	0.222	0.532
EA016	248201	7930209	Navigator Resources Ltd	2003	A68201	0.006			13	1180	0.284	0.417
EA017	248197	7930212	Navigator Resources Ltd	2003	A68201	0.033			158	1460	1.081	0.768
EA018	248233	7930146	Navigator Resources Ltd	2003	A68201	0.325			278	2003	0.174	0.893
EA019	248090	7930178	Navigator Resources Ltd	2003	A68201	0.009			26	1741	0.52	0.602
EA020	248348	7930261	Navigator Resources Ltd	2003	A68201	0.039			24	874	0.076	0.151
EA021	248350	7930256	Navigator Resources Ltd	2003	A68201	0.006			20	891	0.056	0.112
EA022	248393	7930313	Navigator Resources Ltd	2003	A68201	0.006			14	887	0.054	0.137
EA023	248405	7930320	Navigator Resources Ltd	2003	A68201	0.007			7	849	0.062	0.18
EA024	248453	7930342	Navigator Resources Ltd	2003	A68201	0.014			247	1522	0.191	0.293
EA025	248468	7930353	Navigator Resources Ltd	2003	A68201	0.034			332	1750	0.369	0.217
EA026	248468	7930353	Navigator Resources Ltd	2003	A68201	0.058			332	5282	0.731	0.239
EA027	248520	7930417	Navigator Resources Ltd	2003	A68201	0.008			297	970	0.076	0.129
EA028	248557	7930386	Navigator Resources Ltd	2003	A68201	0.074			3132	3391	0.594	0.241
EA029	248557	7930386	Navigator Resources Ltd	2003	A68201	0.066			4478	4814	0.443	0.156
EA030	248551	7930376	Navigator Resources Ltd	2003	A68201	0.035			1391	2217	0.352	0.143
EA031	248705	7930536	Navigator Resources Ltd	2003	A68201	0.02			892	1792	0.706	0.502
EA032	248711	7930537	Navigator Resources Ltd	2003	A68201	0.006			768	1707	0.052	0.027
EA033	248970	7930519	Navigator Resources Ltd	2003	A68201	0.008			137	420	0.046	0.035
EA034	248952	7930525	Navigator Resources Ltd	2003	A68201	0.009			117	446	0.049	0.049
EA035	249500	7930286	Navigator Resources Ltd	2003	A68201	0.004			1	249	0.004	0.002
EA036	249516	7930270	Navigator Resources Ltd	2003	A68201	0.048			2760	2473	0.442	0.162
EA037	249571	7930313	Navigator Resources Ltd	2003	A68201	0.006			11	1313	0.313	0.272
EA038	249628	7930351	Navigator Resources Ltd	2003	A68201	0.009			213	1247	0.121	0.259
MEB_38-C	248805	7930310	Magma Metals Limited	2005	A74371	0			525	1420	0.061	0.059
MEB_33-C	248708	7929897	Magma Metals Limited	2007	A74371	0.88			64600	1130	0.042	0.029
MEB_37-S	248434	7930234	Magma Metals Limited	2007	A74371	0.01			935	1250	0.028	0.015



**Table B: Soil Samples**

Sample ID	Easting m	Northing M	Company	Year	WAMEX R	Auppb	Asppm	Ptppb	Pdppb	Nippm	Cuppm	Crppm
3345	248839	7930309	Helix Resources NL	1987	A21972	1.00	3.00	1.00	1.00	60.00	75.00	15.00
3346	248829	7930327	Helix Resources NL	1987	A21972	1.00	4.00	1.00	5.00	90.00	60.00	360.00
3347	248819	7930344	Helix Resources NL	1987	A21972	1.00	3.00	1.00	1.00	10.00	15.00	20.00
3348	248810	7930361	Helix Resources NL	1987	A21972	1.00	3.00	1.00	1.00	75.00	70.00	40.00
3349	248800	7930379	Helix Resources NL	1987	A21972	1.00	1.00	1.00	1.00	10.00	5.00	25.00
3350	248790	7930396	Helix Resources NL	1987	A21972	1.00	3.00	1.00	1.00	25.00	5.00	25.00
3351	248780	7930414	Helix Resources NL	1987	A21972	1.00	1.00	1.00	1.00	20.00	15.00	25.00
3352	248771	7930431	Helix Resources NL	1987	A21972	1.00	3.00	1.00	1.00	10.00	5.00	20.00
3353	248761	7930448	Helix Resources NL	1987	A21972	1.00	3.00	1.00	1.00	20.00	5.00	25.00
3354	248751	7930466	Helix Resources NL	1987	A21972	1.00	1.00	1.00	4.00	60.00	5.00	110.00
3355	248741	7930483	Helix Resources NL	1987	A21972	1.00	1.00	5.00	3.00	80.00	35.00	140.00
3356	248732	7930501	Helix Resources NL	1987	A21972	1.00	4.00	5.00	17.00	200.00	65.00	1450.00
3357	248722	7930518	Helix Resources NL	1987	A21972	15.00	2.00	13.00	15.00	95.00	55.00	250.00
3358	248712	7930535	Helix Resources NL	1987	A21972	40.00	12.00	52.00	150.00	615.00	400.00	3350.00
3359	248702	7930553	Helix Resources NL	1987	A21972	5.00	6.00	5.00	16.00	130.00	75.00	250.00
3360	248692	7930570	Helix Resources NL	1987	A21972	5.00	2.00	1.00	10.00	35.00	60.00	35.00
3361	248683	7930588	Helix Resources NL	1987	A21972	5.00	5.00	1.00	2.00	60.00	85.00	50.00
3362	248673	7930605	Helix Resources NL	1987	A21972	1.00	1.00	1.00	1.00	15.00	35.00	5.00
3363	248663	7930622	Helix Resources NL	1987	A21972	1.00	1.00	1.00	1.00	10.00	25.00	5.00
3364	248653	7930640	Helix Resources NL	1987	A21972	1.00	5.00	1.00	1.00	35.00	55.00	30.00
3365	248644	7930657	Helix Resources NL	1987	A21972	10.00	12.00	1.00	8.00	555.00	245.00	950.00
3366	248634	7930675	Helix Resources NL	1987	A21972	10.00	6.00	15.00	17.00	480.00	535.00	600.00
3367	248624	7930692	Helix Resources NL	1987	A21972	40.00	2.00	1.00	2.00	70.00	55.00	15.00
3368	248614	7930709	Helix Resources NL	1987	A21972	1.00	5.00	1.00	2.00	75.00	105.00	10.00
3369	248604	7930727	Helix Resources NL	1987	A21972	1.00	2.00	1.00	1.00	70.00	120.00	40.00
3370	248595	7930744	Helix Resources NL	1987	A21972	20.00	5.00	1.00	2.00	65.00	85.00	50.00
3371	248585	7930762	Helix Resources NL	1987	A21972	5.00	4.00	1.00	2.00	75.00	100.00	60.00
3372	248575	7930779	Helix Resources NL	1987	A21972	1.00	4.00	1.00	5.00	90.00	165.00	50.00
3373	248565	7930797	Helix Resources NL	1987	A21972	5.00	2.00	1.00	5.00	110.00	195.00	65.00
3374	248556	7930814	Helix Resources NL	1987	A21972	1.00	2.00	1.00	3.00	85.00	90.00	25.00
3375	248546	7930831	Helix Resources NL	1987	A21972	1.00	6.00	16.00	27.00	110.00	70.00	950.00
3376	248536	7930849	Helix Resources NL	1987	A21972	1.00	7.00	10.00	12.00	110.00	70.00	950.00
3377	248526	7930866	Helix Resources NL	1987	A21972	1.00	5.00	1.00	5.00	100.00	80.00	580.00
3378	248517	7930884	Helix Resources NL	1987	A21972	1.00	3.00	1.00	6.00	95.00	85.00	175.00
3379	248507	7930901	Helix Resources NL	1987	A21972	1.00	4.00	14.00	4.00	80.00	80.00	215.00
3380	248497	7930918	Helix Resources NL	1987	A21972	1.00	7.00	1.00	5.00	55.00	65.00	210.00
3381	248487	7930936	Helix Resources NL	1987	A21972	1.00	10.00	1.00	4.00	55.00	65.00	240.00
3382	248477	7930953	Helix Resources NL	1987	A21972	1.00	5.00	1.00	2.00	65.00	65.00	365.00

Sample ID	Easting m	Northing M	Company	Year	WAMEX R	Auppb	Asppm	Ptppb	Pdppb	Nippm	Cuppm	Crppm
3383	248468	7930971	Helix Resources NL	1987	A21972	1.00	5.00	5.00	5.00	60.00	65.00	175.00
3384	248458	7930988	Helix Resources NL	1987	A21972	1.00	5.00	1.00	4.00	55.00	65.00	195.00
3385	248448	7931005	Helix Resources NL	1987	A21972	1.00	5.00	1.00	6.00	40.00	65.00	95.00
3386	248438	7931023	Helix Resources NL	1987	A21972	1.00	10.00	1.00	2.00	25.00	55.00	90.00
3387	248429	7931040	Helix Resources NL	1987	A21972	1.00	10.00	1.00	2.00	35.00	55.00	95.00
3388	248419	7931058	Helix Resources NL	1987	A21972	1.00	17.00	1.00	1.00	20.00	55.00	30.00
3389	248409	7931075	Helix Resources NL	1987	A21972	1.00	24.00	1.00	1.00	45.00	75.00	55.00
3390	248399	7931092	Helix Resources NL	1987	A21972	1.00	6.00	1.00	1.00	10.00	45.00	15.00
3391	249062	7930320	Helix Resources NL	1987	A21972	1.00	4.00	1.00	1.00	10.00	5.00	15.00
3392	249052	7930337	Helix Resources NL	1987	A21972	1.00	3.00	1.00	1.00	10.00	5.00	20.00
3393	249042	7930355	Helix Resources NL	1987	A21972	1.00	3.00	1.00	1.00	15.00	5.00	15.00
3394	249033	7930372	Helix Resources NL	1987	A21972	1.00	1.00	1.00	1.00	15.00	5.00	15.00
3395	249023	7930389	Helix Resources NL	1987	A21972	1.00	3.00	1.00	1.00	20.00	5.00	5.00
3396	249013	7930407	Helix Resources NL	1987	A21972	1.00	1.00	1.00	1.00	20.00	5.00	5.00
3397	249003	7930424	Helix Resources NL	1987	A21972	1.00	2.00	1.00	1.00	25.00	5.00	10.00
3398	248994	7930442	Helix Resources NL	1987	A21972	5.00	6.00	1.00	2.00	25.00	5.00	5.00
3399	248984	7930459	Helix Resources NL	1987	A21972	5.00	8.00	1.00	1.00	20.00	15.00	20.00
3400	248974	7930477	Helix Resources NL	1987	A21972	5.00	5.00	1.00	1.00	45.00	25.00	55.00
3401	248964	7930494	Helix Resources NL	1987	A21972	1.00	5.00	1.00	2.00	45.00	35.00	55.00
3402	248954	7930511	Helix Resources NL	1987	A21972	10.00	8.00	9.00	19.00	215.00	115.00	530.00
3403	248945	7930529	Helix Resources NL	1987	A21972	1.00	8.00	10.00	14.00	285.00	55.00	850.00
3404	248935	7930546	Helix Resources NL	1987	A21972	1.00	4.00	1.00	3.00	85.00	95.00	25.00
3405	248925	7930564	Helix Resources NL	1987	A21972	1.00	6.00	1.00	1.00	35.00	120.00	15.00
3406	248915	7930581	Helix Resources NL	1987	A21972	1.00	5.00	1.00	1.00	65.00	90.00	50.00
3407	248906	7930598	Helix Resources NL	1987	A21972	1.00	5.00	1.00	3.00	35.00	40.00	65.00
3408	248896	7930616	Helix Resources NL	1987	A21972	5.00	5.00	1.00	8.00	95.00	65.00	430.00
3409	248886	7930633	Helix Resources NL	1987	A21972	1.00	6.00	6.00	4.00	130.00	80.00	1100.00
3410	248876	7930651	Helix Resources NL	1987	A21972	1.00	3.00	1.00	7.00	75.00	60.00	175.00
3411	248866	7930668	Helix Resources NL	1987	A21972	1.00	2.00	1.00	1.00	15.00	105.00	35.00
3412	248857	7930685	Helix Resources NL	1987	A21972	1.00	8.00	1.00	2.00	105.00	70.00	185.00
3413	248847	7930703	Helix Resources NL	1987	A21972	1.00	5.00	6.00	4.00	125.00	70.00	1050.00
3414	248837	7930720	Helix Resources NL	1987	A21972	1.00	3.00	1.00	1.00	35.00	55.00	125.00
3415	248827	7930738	Helix Resources NL	1987	A21972	1.00	1.00	1.00	1.00	10.00	65.00	10.00
3416	248818	7930755	Helix Resources NL	1987	A21972	1.00	1.00	1.00	1.00	5.00	115.00	10.00
3417	248808	7930772	Helix Resources NL	1987	A21972	1.00	1.00	1.00	1.00	5.00	120.00	5.00
3418	248798	7930790	Helix Resources NL	1987	A21972	1.00	2.00	1.00	1.00	15.00	65.00	5.00
3419	248788	7930807	Helix Resources NL	1987	A21972	1.00	3.00	1.00	1.00	5.00	50.00	3.00
3420	248779	7930825	Helix Resources NL	1987	A21972	1.00	3.00	1.00	1.00	5.00	85.00	5.00

Sample ID	Easting m	Northing M	Company	Year	WAMEX R	Auppb	Asppm	Ptppb	Pdppb	Nippm	Cuppm	Crppm
3421	248769	7930842	Helix Resources NL	1987	A21972	1.00	1.00	1.00	1.00	5.00	50.00	5.00
3422	248759	7930859	Helix Resources NL	1987	A21972	1.00	3.00	1.00	1.00	55.00	60.00	245.00
3423	248749	7930877	Helix Resources NL	1987	A21972	1.00	1.00	1.00	1.00	15.00	25.00	185.00
3424	248739	7930894	Helix Resources NL	1987	A21972	1.00	1.00	1.00	1.00	15.00	15.00	25.00
3425	248730	7930912	Helix Resources NL	1987	A21972	1.00	2.00	1.00	1.00	25.00	60.00	15.00
3426	248720	7930929	Helix Resources NL	1987	A21972	1.00	4.00	1.00	1.00	55.00	65.00	25.00
3427	248710	7930946	Helix Resources NL	1987	A21972	1.00	3.00	1.00	1.00	15.00	50.00	25.00
3428	248700	7930964	Helix Resources NL	1987	A21972	1.00	2.00	1.00	1.00	10.00	25.00	5.00
3429	248691	7930981	Helix Resources NL	1987	A21972	1.00	1.00	1.00	1.00	10.00	35.00	10.00
3430	248681	7930999	Helix Resources NL	1987	A21972	1.00	4.00	1.00	1.00	45.00	65.00	45.00
3431	248671	7931016	Helix Resources NL	1987	A21972	1.00	3.00	1.00	1.00	25.00	50.00	25.00
3432	248661	7931033	Helix Resources NL	1987	A21972	1.00	8.00	1.00	4.00	85.00	75.00	200.00
3433	248651	7931051	Helix Resources NL	1987	A21972	1.00	6.00	1.00	6.00	55.00	75.00	100.00
3434	248642	7931068	Helix Resources NL	1987	A21972	1.00	5.00	1.00	2.00	75.00	60.00	225.00
3435	248632	7931086	Helix Resources NL	1987	A21972	1.00	7.00	1.00	8.00	80.00	70.00	255.00
3436	248622	7931103	Helix Resources NL	1987	A21972	1.00	8.00	1.00	5.00	95.00	85.00	180.00
3437	248612	7931120	Helix Resources NL	1987	A21972	1.00	6.00	1.00	4.00	70.00	65.00	95.00
3438	248603	7931138	Helix Resources NL	1987	A21972	1.00	6.00	1.00	5.00	60.00	65.00	85.00
3439	248593	7931155	Helix Resources NL	1987	A21972	1.00	6.00	1.00	4.00	55.00	60.00	265.00
3440	248583	7931173	Helix Resources NL	1987	A21972	1.00	6.00	1.00	3.00	75.00	65.00	190.00
3441	248573	7931190	Helix Resources NL	1987	A21972	5.00	8.00	1.00	2.00	45.00	55.00	320.00
3497	249285	7930331	Helix Resources NL	1987	A21972	1.00	8.00	1.00	5.00	45.00	55.00	35.00
3496	249275	7930348	Helix Resources NL	1987	A21972	1.00	22.00	1.00	13.00	50.00	95.00	185.00
3495	249265	7930365	Helix Resources NL	1987	A21972	1.00	7.00	1.00	3.00	60.00	145.00	40.00
3494	249256	7930383	Helix Resources NL	1987	A21972	1.00	4.00	1.00	3.00	60.00	145.00	20.00
3493	249246	7930400	Helix Resources NL	1987	A21972	1.00	7.00	1.00	2.00	110.00	70.00	85.00
3492	249236	7930418	Helix Resources NL	1987	A21972	1.00	7.00	1.00	7.00	100.00	65.00	170.00
3491	249226	7930435	Helix Resources NL	1987	A21972	1.00	5.00	1.00	2.00	55.00	95.00	45.00
3490	249216	7930452	Helix Resources NL	1987	A21972	1.00	5.00	1.00	3.00	60.00	55.00	60.00
3489	249207	7930470	Helix Resources NL	1987	A21972	1.00	8.00	1.00	5.00	50.00	65.00	35.00
3488	249197	7930487	Helix Resources NL	1987	A21972	1.00	10.00	1.00	2.00	50.00	95.00	15.00
3487	249187	7930505	Helix Resources NL	1987	A21972	1.00	65.00	7.00	9.00	55.00	210.00	35.00
3486	249177	7930522	Helix Resources NL	1987	A21972	1.00	22.00	1.00	3.00	35.00	225.00	25.00
3485	249168	7930539	Helix Resources NL	1987	A21972	1.00	6.00	1.00	1.00	15.00	245.00	20.00
3484	249158	7930557	Helix Resources NL	1987	A21972	1.00	6.00	1.00	1.00	30.00	170.00	45.00
3483	249148	7930574	Helix Resources NL	1987	A21972	1.00	10.00	19.00	7.00	65.00	280.00	30.00
3482	249138	7930592	Helix Resources NL	1987	A21972	5.00	10.00	17.00	17.00	70.00	270.00	20.00
3481	249128	7930609	Helix Resources NL	1987	A21972	1.00	6.00	1.00	5.00	50.00	300.00	15.00

Sample ID	Easting m	Northing M	Company	Year	WAMEX R	Auppb	Asppm	Ptppb	Pdppb	Nippm	Cuppm	Crppm
3480	249119	7930626	Helix Resources NL	1987	A21972	1.00	6.00	1.00	1.00	50.00	215.00	15.00
3479	249109	7930644	Helix Resources NL	1987	A21972	1.00	4.00	1.00	2.00	35.00	220.00	15.00
3478	249099	7930661	Helix Resources NL	1987	A21972	1.00	8.00	1.00	1.00	15.00	125.00	20.00
3477	249089	7930679	Helix Resources NL	1987	A21972	1.00	7.00	1.00	1.00	15.00	105.00	25.00
3476	249080	7930696	Helix Resources NL	1987	A21972	1.00	7.00	1.00	1.00	25.00	65.00	40.00
3475	249070	7930713	Helix Resources NL	1987	A21972	1.00	6.00	1.00	1.00	20.00	60.00	35.00
3474	249060	7930731	Helix Resources NL	1987	A21972	1.00	4.00	1.00	2.00	25.00	65.00	85.00
3473	249050	7930748	Helix Resources NL	1987	A21972	1.00	4.00	1.00	1.00	120.00	75.00	850.00
3472	249041	7930766	Helix Resources NL	1987	A21972	1.00	5.00	1.00	3.00	90.00	65.00	770.00
3471	249031	7930783	Helix Resources NL	1987	A21972	5.00	4.00	1.00	4.00	115.00	75.00	500.00
3470	249021	7930801	Helix Resources NL	1987	A21972	1.00	5.00	1.00	5.00	100.00	75.00	385.00
3469	249011	7930818	Helix Resources NL	1987	A21972	1.00	5.00	1.00	5.00	120.00	85.00	480.00
3468	249001	7930835	Helix Resources NL	1987	A21972	1.00	4.00	1.00	9.00	90.00	65.00	235.00
3467	248992	7930853	Helix Resources NL	1987	A21972	1.00	3.00	1.00	3.00	35.00	50.00	130.00
3466	248982	7930870	Helix Resources NL	1987	A21972	1.00	2.00	1.00	2.00	35.00	45.00	75.00
3465	248972	7930888	Helix Resources NL	1987	A21972	1.00	2.00	1.00	4.00	10.00	35.00	45.00
3464	248962	7930905	Helix Resources NL	1987	A21972	1.00	2.00	1.00	1.00	10.00	40.00	80.00
3463	248953	7930922	Helix Resources NL	1987	A21972	1.00	2.00	1.00	1.00	5.00	30.00	45.00
3462	248943	7930940	Helix Resources NL	1987	A21972	1.00	1.00	1.00	1.00	1.00	15.00	5.00
3461	248933	7930957	Helix Resources NL	1987	A21972	1.00	2.00	1.00	1.00	1.00	10.00	10.00
3460	248923	7930975	Helix Resources NL	1987	A21972	1.00	1.00	1.00	1.00	1.00	55.00	10.00
3459	248913	7930992	Helix Resources NL	1987	A21972	1.00	4.00	1.00	1.00	15.00	50.00	25.00
3458	248904	7931009	Helix Resources NL	1987	A21972	1.00	4.00	1.00	1.00	35.00	55.00	35.00
3457	248894	7931027	Helix Resources NL	1987	A21972	1.00	2.00	1.00	1.00	5.00	45.00	25.00
3456	248884	7931044	Helix Resources NL	1987	A21972	1.00	2.00	1.00	1.00	5.00	80.00	35.00
3455	248874	7931062	Helix Resources NL	1987	A21972	1.00	2.00	1.00	1.00	210.00	55.00	35.00
3454	248865	7931079	Helix Resources NL	1987	A21972	1.00	3.00	1.00	1.00	15.00	60.00	115.00
3453	248855	7931096	Helix Resources NL	1987	A21972	1.00	3.00	1.00	1.00	5.00	140.00	35.00
3452	248845	7931114	Helix Resources NL	1987	A21972	1.00	7.00	1.00	1.00	40.00	70.00	220.00
3451	248835	7931131	Helix Resources NL	1987	A21972	1.00	10.00	1.00	2.00	65.00	65.00	330.00
3450	248826	7931149	Helix Resources NL	1987	A21972	1.00	4.00	1.00	4.00	20.00	50.00	85.00
3449	248816	7931166	Helix Resources NL	1987	A21972	1.00	23.00	1.00	5.00	25.00	80.00	135.00
3448	248806	7931183	Helix Resources NL	1987	A21972	1.00	18.00	1.00	2.00	35.00	70.00	230.00
3447	248796	7931201	Helix Resources NL	1987	A21972	1.00	34.00	1.00	2.00	15.00	65.00	55.00
3446	248786	7931218	Helix Resources NL	1987	A21972	1.00	48.00	1.00	4.00	50.00	140.00	85.00
3445	248777	7931236	Helix Resources NL	1987	A21972	1.00	23.00	1.00	2.00	55.00	80.00	200.00
3444	248767	7931253	Helix Resources NL	1987	A21972	1.00	11.00	1.00	1.00	65.00	60.00	255.00
3443	248757	7931270	Helix Resources NL	1987	A21972	1.00	9.00	1.00	4.00	65.00	65.00	185.00

Sample ID	Easting m	Northing M	Company	Year	WAMEX R	Auppb	Asppm	Ptppb	Pdppb	Nippm	Cuppm	Crppm
3442	248747	7931288	Helix Resources NL	1987	A21972	1.00	7.00	1.00	2.00	55.00	60.00	195.00
3607	249537	7930289	Helix Resources NL	1987	A21972	5.00	33.00	33.00	100.00	460.00	220.00	4850.00
3608	249527	7930306	Helix Resources NL	1987	A21972	10.00	7.00	39.00	142.00	655.00	45.00	4000.00
3609	249518	7930324	Helix Resources NL	1987	A21972	10.00	4.00	28.00	77.00	300.00	120.00	4000.00
3498	249508	7930341	Helix Resources NL	1987	A21972	1.00	3.00	1.00	7.00	80.00	55.00	370.00
3499	249498	7930359	Helix Resources NL	1987	A21972	1.00	2.00	1.00	2.00	15.00	15.00	45.00
3500	249488	7930376	Helix Resources NL	1987	A21972	1.00	3.00	1.00	2.00	30.00	25.00	115.00
3501	249478	7930393	Helix Resources NL	1987	A21972	1.00	6.00	1.00	2.00	70.00	65.00	5.00
3502	249469	7930411	Helix Resources NL	1987	A21972	5.00	8.00	1.00	10.00	70.00	265.00	10.00
3503	249459	7930428	Helix Resources NL	1987	A21972	5.00	15.00	1.00	11.00	60.00	485.00	5.00
3504	249449	7930446	Helix Resources NL	1987	A21972	1.00	11.00	5.00	15.00	65.00	315.00	15.00
3505	249439	7930463	Helix Resources NL	1987	A21972	1.00	2.00	1.00	1.00	50.00	265.00	3.00
3506	249430	7930481	Helix Resources NL	1987	A21972	1.00	3.00	1.00	1.00	30.00	210.00	5.00
3507	249420	7930498	Helix Resources NL	1987	A21972	5.00	24.00	1.00	2.00	45.00	155.00	15.00
3508	249410	7930515	Helix Resources NL	1987	A21972	1.00	4.00	1.00	3.00	60.00	25.00	5.00
3509	249400	7930533	Helix Resources NL	1987	A21972	1.00	10.00	1.00	1.00	20.00	55.00	5.00
3510	249390	7930550	Helix Resources NL	1987	A21972	1.00	2.00	1.00	1.00	30.00	15.00	5.00
3511	249381	7930568	Helix Resources NL	1987	A21972	1.00	3.00	1.00	2.00	60.00	30.00	15.00
3512	249371	7930585	Helix Resources NL	1987	A21972	1.00	5.00	1.00	2.00	55.00	10.00	10.00
3513	249361	7930602	Helix Resources NL	1987	A21972	1.00	5.00	1.00	1.00	70.00	25.00	40.00
3514	249351	7930620	Helix Resources NL	1987	A21972	1.00	6.00	1.00	2.00	75.00	45.00	115.00
3515	249342	7930637	Helix Resources NL	1987	A21972	1.00	4.00	1.00	1.00	75.00	35.00	85.00
3516	249332	7930655	Helix Resources NL	1987	A21972	5.00	4.00	1.00	1.00	25.00	55.00	15.00
3517	249322	7930672	Helix Resources NL	1987	A21972	1.00	3.00	1.00	1.00	10.00	240.00	10.00
3518	249312	7930689	Helix Resources NL	1987	A21972	1.00	2.00	1.00	1.00	10.00	315.00	15.00
3519	249303	7930707	Helix Resources NL	1987	A21972	1.00	2.00	1.00	1.00	20.00	40.00	20.00
3520	249293	7930724	Helix Resources NL	1987	A21972	1.00	6.00	1.00	1.00	1.00	65.00	5.00
3521	249283	7930742	Helix Resources NL	1987	A21972	1.00	4.00	1.00	1.00	1.00	155.00	5.00
3522	249273	7930759	Helix Resources NL	1987	A21972	1.00	2.00	1.00	1.00	1.00	95.00	5.00
3523	249263	7930776	Helix Resources NL	1987	A21972	1.00	4.00	1.00	1.00	1.00	85.00	5.00
3524	249254	7930794	Helix Resources NL	1987	A21972	1.00	3.00	1.00	1.00	1.00	60.00	5.00
3525	249244	7930811	Helix Resources NL	1987	A21972	1.00	7.00	1.00	1.00	10.00	85.00	10.00
3526	249234	7930829	Helix Resources NL	1987	A21972	1.00	4.00	1.00	1.00	1.00	30.00	5.00
3527	249224	7930846	Helix Resources NL	1987	A21972	1.00	4.00	1.00	1.00	1.00	30.00	5.00
3528	249215	7930863	Helix Resources NL	1987	A21972	1.00	4.00	1.00	1.00	1.00	50.00	5.00
3529	249205	7930881	Helix Resources NL	1987	A21972	1.00	3.00	1.00	1.00	10.00	45.00	5.00
3530	249185	7930916	Helix Resources NL	1987	A21972	1.00	2.00	1.00	1.00	1.00	115.00	5.00
3531	249175	7930933	Helix Resources NL	1987	A21972	1.00	2.00	1.00	1.00	10.00	55.00	15.00



Sample ID	Easting m	Northing M	Company	Year	WAMEX R	Auppb	Asppm	Ptppb	Pdppb	Nippm	Cuppm	Crppm
3532	249166	7930950	Helix Resources NL	1987	A21972	1.00	2.00	1.00	1.00	5.00	55.00	5.00
3533	249156	7930968	Helix Resources NL	1987	A21972	1.00	3.00	1.00	1.00	5.00	55.00	5.00
3534	249146	7930985	Helix Resources NL	1987	A21972	1.00	2.00	1.00	1.00	5.00	45.00	5.00
3535	249136	7931003	Helix Resources NL	1987	A21972	1.00	2.00	1.00	1.00	5.00	55.00	5.00
3536	249127	7931020	Helix Resources NL	1987	A21972	1.00	2.00	1.00	1.00	5.00	85.00	5.00
3537	249117	7931037	Helix Resources NL	1987	A21972	1.00	2.00	1.00	1.00	5.00	55.00	5.00
3538	249107	7931055	Helix Resources NL	1987	A21972	1.00	3.00	1.00	1.00	15.00	50.00	15.00
3539	249097	7931072	Helix Resources NL	1987	A21972	1.00	3.00	1.00	1.00	10.00	55.00	10.00
3540	249088	7931090	Helix Resources NL	1987	A21972	1.00	4.00	1.00	1.00	40.00	60.00	55.00
3541	249078	7931107	Helix Resources NL	1987	A21972	1.00	5.00	1.00	4.00	80.00	75.00	180.00
3542	249068	7931125	Helix Resources NL	1987	A21972	1.00	4.00	1.00	4.00	105.00	85.00	245.00
3543	249058	7931142	Helix Resources NL	1987	A21972	1.00	6.00	1.00	4.00	90.00	85.00	190.00
3544	249048	7931159	Helix Resources NL	1987	A21972	1.00	5.00	1.00	4.00	85.00	75.00	175.00
3545	249039	7931177	Helix Resources NL	1987	A21972	1.00	4.00	1.00	2.00	60.00	65.00	225.00
3546	249029	7931194	Helix Resources NL	1987	A21972	1.00	4.00	1.00	7.00	70.00	75.00	115.00
3547	249019	7931212	Helix Resources NL	1987	A21972	1.00	5.00	1.00	3.00	80.00	65.00	365.00
3548	249009	7931229	Helix Resources NL	1987	A21972	1.00	4.00	1.00	2.00	75.00	55.00	430.00
3549	249000	7931246	Helix Resources NL	1987	A21972	10.00	6.00	1.00	3.00	80.00	70.00	570.00
3550	248990	7931264	Helix Resources NL	1987	A21972	1.00	4.00	1.00	4.00	75.00	60.00	420.00
3551	248980	7931281	Helix Resources NL	1987	A21972	1.00	5.00	1.00	5.00	80.00	65.00	500.00
3552	248970	7931299	Helix Resources NL	1987	A21972	1.00	6.00	1.00	2.00	50.00	55.00	220.00
3553	248960	7931316	Helix Resources NL	1987	A21972	1.00	7.00	1.00	3.00	70.00	70.00	330.00
3554	248951	7931333	Helix Resources NL	1987	A21972	1.00	4.00	1.00	3.00	60.00	55.00	160.00
3555	248941	7931351	Helix Resources NL	1987	A21972	1.00	4.00	1.00	5.00	95.00	75.00	190.00
3556	248931	7931368	Helix Resources NL	1987	A21972	1.00	4.00	1.00	4.00	55.00	60.00	115.00
3557	248921	7931386	Helix Resources NL	1987	A21972	1.00	5.00	1.00	5.00	65.00	75.00	175.00
3595	249652	7930491	Helix Resources NL	1987	A21972	1.00	3.00	1.00	11.00	35.00	165.00	3.00
3594	249643	7930509	Helix Resources NL	1987	A21972	1.00	5.00	1.00	6.00	60.00	315.00	15.00
3593	249633	7930526	Helix Resources NL	1987	A21972	1.00	3.00	1.00	1.00	55.00	175.00	5.00
3592	249623	7930543	Helix Resources NL	1987	A21972	1.00	5.00	1.00	1.00	15.00	120.00	5.00
3591	249613	7930561	Helix Resources NL	1987	A21972	1.00	2.00	1.00	1.00	15.00	45.00	15.00
3590	249604	7930578	Helix Resources NL	1987	A21972	1.00	2.00	1.00	1.00	1.00	115.00	10.00
3589	249594	7930596	Helix Resources NL	1987	A21972	1.00	2.00	1.00	1.00	25.00	115.00	25.00
3588	249584	7930613	Helix Resources NL	1987	A21972	1.00	2.00	1.00	2.00	15.00	85.00	40.00
3587	249574	7930630	Helix Resources NL	1987	A21972	1.00	10.00	5.00	9.00	255.00	190.00	1750.00
3586	249565	7930648	Helix Resources NL	1987	A21972	5.00	11.00	23.00	23.00	315.00	285.00	6700.00
3585	249555	7930665	Helix Resources NL	1987	A21972	1.00	8.00	5.00	5.00	155.00	150.00	480.00
3584	249545	7930683	Helix Resources NL	1987	A21972	1.00	12.00	1.00	5.00	495.00	200.00	3200.00

Sample ID	Easting m	Northing M	Company	Year	WAMEX R	Auppb	Asppm	Ptppb	Pdppb	Nippm	Cuppm	Crppm
3583	249535	7930700	Helix Resources NL	1987	A21972	1.00	2.00	1.00	4.00	55.00	65.00	125.00
3582	249525	7930717	Helix Resources NL	1987	A21972	1.00	2.00	1.00	4.00	60.00	80.00	55.00
3581	249516	7930735	Helix Resources NL	1987	A21972	1.00	2.00	1.00	1.00	30.00	65.00	15.00
3580	249506	7930752	Helix Resources NL	1987	A21972	1.00	3.00	1.00	1.00	20.00	55.00	5.00
3579	249496	7930770	Helix Resources NL	1987	A21972	1.00	5.00	1.00	1.00	45.00	55.00	10.00
3578	249486	7930787	Helix Resources NL	1987	A21972	1.00	2.00	1.00	3.00	35.00	55.00	10.00
3577	249477	7930805	Helix Resources NL	1987	A21972	1.00	3.00	1.00	7.00	40.00	130.00	5.00
3576	249467	7930822	Helix Resources NL	1987	A21972	1.00	5.00	1.00	1.00	60.00	110.00	30.00
3575	249457	7930839	Helix Resources NL	1987	A21972	1.00	2.00	1.00	1.00	1.00	75.00	5.00
3574	249447	7930857	Helix Resources NL	1987	A21972	1.00	1.00	1.00	2.00	1.00	55.00	5.00
3573	249437	7930874	Helix Resources NL	1987	A21972	1.00	1.00	1.00	1.00	1.00	40.00	3.00
3572	249428	7930892	Helix Resources NL	1987	A21972	1.00	13.00	1.00	1.00	30.00	65.00	15.00
3571	249418	7930909	Helix Resources NL	1987	A21972	1.00	7.00	1.00	1.00	30.00	80.00	5.00
3570	249408	7930926	Helix Resources NL	1987	A21972	1.00	1.00	1.00	1.00	1.00	65.00	3.00
3569	249398	7930944	Helix Resources NL	1987	A21972	1.00	1.00	1.00	1.00	1.00	115.00	5.00
3568	249389	7930961	Helix Resources NL	1987	A21972	1.00	1.00	1.00	1.00	5.00	110.00	5.00
3567	249379	7930979	Helix Resources NL	1987	A21972	1.00	2.00	1.00	1.00	5.00	135.00	3.00
3566	249369	7930996	Helix Resources NL	1987	A21972	1.00	1.00	1.00	1.00	1.00	90.00	3.00
3565	249359	7931013	Helix Resources NL	1987	A21972	1.00	1.00	1.00	1.00	1.00	25.00	5.00
3564	249350	7931031	Helix Resources NL	1987	A21972	1.00	1.00	1.00	1.00	1.00	35.00	5.00
3563	249340	7931048	Helix Resources NL	1987	A21972	1.00	1.00	1.00	1.00	1.00	35.00	5.00
3562	249330	7931066	Helix Resources NL	1987	A21972	1.00	1.00	1.00	1.00	5.00	55.00	5.00
3561	249320	7931083	Helix Resources NL	1987	A21972	1.00	1.00	1.00	1.00	5.00	125.00	5.00
3560	249310	7931100	Helix Resources NL	1987	A21972	1.00	1.00	1.00	1.00	1.00	105.00	5.00
3559	249301	7931118	Helix Resources NL	1987	A21972	1.00	1.00	1.00	1.00	1.00	115.00	5.00
3558	249291	7931135	Helix Resources NL	1987	A21972	1.00	2.00	1.00	1.00	1.00	125.00	10.00
3640	249651	7930902	Helix Resources NL	1987	A21972	5.00	5.00	1.00	1.00	60.00	40.00	5.00
3641	249641	7930920	Helix Resources NL	1987	A21972	1.00	3.00	1.00	1.00	40.00	60.00	10.00
3642	249631	7930937	Helix Resources NL	1987	A21972	10.00	4.00	1.00	9.00	65.00	110.00	60.00
3643	249621	7930954	Helix Resources NL	1987	A21972	5.00	3.00	1.00	4.00	40.00	95.00	10.00
3644	249612	7930972	Helix Resources NL	1987	A21972	1.00	3.00	1.00	1.00	30.00	45.00	15.00
3645	249602	7930989	Helix Resources NL	1987	A21972	15.00	1.00	1.00	2.00	10.00	10.00	15.00
3646	249592	7931007	Helix Resources NL	1987	A21972	1.00	4.00	1.00	7.00	55.00	185.00	15.00
3647	249582	7931024	Helix Resources NL	1987	A21972	5.00	3.00	1.00	11.00	55.00	115.00	20.00
3648	249572	7931041	Helix Resources NL	1987	A21972	1.00	4.00	1.00	9.00	70.00	120.00	45.00
3649	249563	7931059	Helix Resources NL	1987	A21972	10.00	6.00	1.00	2.00	30.00	230.00	20.00
3650	249553	7931076	Helix Resources NL	1987	A21972	1.00	4.00	1.00	5.00	1.00	60.00	15.00
3651	249543	7931094	Helix Resources NL	1987	A21972	15.00	5.00	1.00	1.00	30.00	140.00	10.00

Sample ID	Easting m	Northing M	Company	Year	WAMEX R	Auppb	Asppm	Ptppb	Pdppb	Nippm	Cuppm	Crppm
3652	249533	7931111	Helix Resources NL	1987	A21972	1.00	3.00	1.00	1.00	15.00	70.00	25.00
3653	249524	7931129	Helix Resources NL	1987	A21972	1.00	4.00	1.00	1.00	30.00	185.00	40.00
3654	249514	7931146	Helix Resources NL	1987	A21972	1.00	3.00	1.00	1.00	50.00	210.00	50.00
3116	247914	7929103	Helix Resources NL	1987	A21972	1.00	3.00	1.00	1.00	25.00	35.00	30.00
3115	247904	7929120	Helix Resources NL	1987	A21972	1.00	3.00	1.00	1.00	20.00	10.00	15.00
3114	247894	7929138	Helix Resources NL	1987	A21972	1.00	3.00	1.00	1.00	15.00	5.00	15.00
3113	247885	7929155	Helix Resources NL	1987	A21972	1.00	1.00	1.00	1.00	15.00	5.00	15.00
3112	247875	7929173	Helix Resources NL	1987	A21972	1.00	1.00	1.00	1.00	15.00	5.00	20.00
3111	247865	7929190	Helix Resources NL	1987	A21972	1.00	2.00	1.00	1.00	10.00	5.00	20.00
3110	247855	7929207	Helix Resources NL	1987	A21972	1.00	2.00	1.00	1.00	10.00	10.00	25.00
3109	247845	7929225	Helix Resources NL	1987	A21972	1.00	3.00	1.00	1.00	15.00	15.00	25.00
3108	247836	7929242	Helix Resources NL	1987	A21972	1.00	5.00	1.00	1.00	10.00	45.00	40.00
3107	247826	7929260	Helix Resources NL	1987	A21972	1.00	2.00	1.00	1.00	15.00	15.00	20.00
3106	247816	7929277	Helix Resources NL	1987	A21972	5.00	2.00	1.00	1.00	10.00	10.00	20.00
3105	247806	7929294	Helix Resources NL	1987	A21972	1.00	2.00	1.00	1.00	20.00	25.00	20.00
3104	247797	7929312	Helix Resources NL	1987	A21972	1.00	1.00	1.00	1.00	15.00	5.00	25.00
3103	247787	7929329	Helix Resources NL	1987	A21972	1.00	2.00	1.00	1.00	25.00	45.00	15.00
3102	247777	7929347	Helix Resources NL	1987	A21972	1.00	3.00	1.00	1.00	5.00	5.00	20.00
3101	247767	7929364	Helix Resources NL	1987	A21972	1.00	3.00	1.00	1.00	5.00	5.00	15.00
3100	247757	7929381	Helix Resources NL	1987	A21972	10.00	1.00	1.00	1.00	15.00	5.00	15.00
3099	247748	7929399	Helix Resources NL	1987	A21972	1.00	3.00	1.00	1.00	10.00	5.00	25.00
3098	247738	7929416	Helix Resources NL	1987	A21972	25.00	1.00	1.00	1.00	10.00	5.00	25.00
3097	247728	7929434	Helix Resources NL	1987	A21972	1.00	3.00	1.00	1.00	10.00	5.00	50.00
3096	247718	7929451	Helix Resources NL	1987	A21972	1.00	1.00	1.00	1.00	10.00	5.00	30.00
3095	247709	7929468	Helix Resources NL	1987	A21972	1.00	1.00	1.00	1.00	10.00	5.00	20.00
3094	247699	7929486	Helix Resources NL	1987	A21972	1.00	1.00	1.00	1.00	10.00	5.00	15.00
3093	247689	7929503	Helix Resources NL	1987	A21972	1.00	1.00	1.00	1.00	10.00	5.00	25.00
3092	247679	7929521	Helix Resources NL	1987	A21972	5.00	2.00	1.00	1.00	10.00	10.00	15.00
3091	247670	7929538	Helix Resources NL	1987	A21972	1.00	2.00	1.00	1.00	15.00	25.00	20.00
3090	247660	7929555	Helix Resources NL	1987	A21972	1.00	2.00	1.00	1.00	15.00	15.00	25.00
3089	247650	7929573	Helix Resources NL	1987	A21972	1.00	2.00	1.00	3.00	30.00	25.00	35.00
3088	247640	7929590	Helix Resources NL	1987	A21972	1.00	1.00	1.00	2.00	10.00	25.00	25.00
3087	247630	7929608	Helix Resources NL	1987	A21972	1.00	1.00	1.00	1.00	15.00	5.00	35.00
3086	247621	7929625	Helix Resources NL	1987	A21972	1.00	1.00	1.00	1.00	10.00	5.00	35.00
3085	247611	7929642	Helix Resources NL	1987	A21972	1.00	2.00	1.00	1.00	20.00	15.00	30.00
3084	247601	7929660	Helix Resources NL	1987	A21972	1.00	2.00	1.00	1.00	20.00	20.00	35.00
3083	247591	7929677	Helix Resources NL	1987	A21972	5.00	2.00	1.00	3.00	30.00	20.00	55.00
3082	247582	7929695	Helix Resources NL	1987	A21972	5.00	1.00	1.00	1.00	40.00	25.00	135.00

Sample ID	Easting m	Northing M	Company	Year	WAMEX R	Auppb	Asppm	Ptppb	Pdppb	Nippm	Cuppm	Crppm
3158	247990	7929375	Helix Resources NL	1987	A21972	1.00	2.00	1.00	3.00	10.00	5.00	55.00
3159	247980	7929392	Helix Resources NL	1987	A21972	1.00	2.00	1.00	1.00	10.00	5.00	30.00
3160	247971	7929409	Helix Resources NL	1987	A21972	1.00	5.00	1.00	4.00	20.00	35.00	35.00
3161	247961	7929427	Helix Resources NL	1987	A21972	1.00	4.00	1.00	8.00	10.00	15.00	15.00
3162	247951	7929444	Helix Resources NL	1987	A21972	1.00	3.00	1.00	4.00	10.00	15.00	15.00
3163	247941	7929462	Helix Resources NL	1987	A21972	1.00	3.00	1.00	5.00	10.00	15.00	15.00
3169	247648	7929984	Helix Resources NL	1987	A21972	1.00	1.00	1.00	4.00	5.00	15.00	80.00
3170	247638	7930001	Helix Resources NL	1987	A21972	1.00	1.00	1.00	1.00	10.00	15.00	60.00
3171	247629	7930019	Helix Resources NL	1987	A21972	1.00	2.00	1.00	1.00	15.00	15.00	40.00
3172	247619	7930036	Helix Resources NL	1987	A21972	1.00	1.00	1.00	1.00	25.00	25.00	45.00
3173	247609	7930053	Helix Resources NL	1987	A21972	1.00	2.00	1.00	1.00	45.00	55.00	55.00
3174	247599	7930071	Helix Resources NL	1987	A21972	1.00	2.00	1.00	1.00	20.00	30.00	35.00
3175	247589	7930088	Helix Resources NL	1987	A21972	5.00	2.00	1.00	2.00	20.00	35.00	40.00
3176	247580	7930106	Helix Resources NL	1987	A21972	1.00	3.00	1.00	3.00	45.00	45.00	25.00
3200	247724	7930256	Helix Resources NL	1987	A21972	1.00	6.00	6.00	15.00	70.00	110.00	205.00
3201	247715	7930273	Helix Resources NL	1987	A21972	1.00	3.00	1.00	5.00	25.00	55.00	15.00
3202	247705	7930290	Helix Resources NL	1987	A21972	1.00	4.00	1.00	5.00	15.00	150.00	15.00
3203	247695	7930308	Helix Resources NL	1987	A21972	1.00	4.00	1.00	3.00	10.00	80.00	5.00
3204	247685	7930325	Helix Resources NL	1987	A21972	1.00	5.00	1.00	1.00	5.00	50.00	5.00
3205	247676	7930343	Helix Resources NL	1987	A21972	1.00	5.00	1.00	1.00	5.00	70.00	5.00
3206	247666	7930360	Helix Resources NL	1987	A21972	1.00	4.00	1.00	1.00	10.00	50.00	5.00
3207	247656	7930377	Helix Resources NL	1987	A21972	1.00	2.00	1.00	1.00	5.00	25.00	10.00
3208	247646	7930395	Helix Resources NL	1987	A21972	1.00	2.00	1.00	1.00	1.00	90.00	5.00
3209	247636	7930412	Helix Resources NL	1987	A21972	1.00	2.00	1.00	1.00	1.00	55.00	5.00
3210	247627	7930430	Helix Resources NL	1987	A21972	1.00	1.00	1.00	1.00	1.00	85.00	5.00
3211	247617	7930447	Helix Resources NL	1987	A21972	1.00	2.00	1.00	1.00	1.00	55.00	5.00
3212	247607	7930464	Helix Resources NL	1987	A21972	1.00	2.00	1.00	1.00	5.00	55.00	10.00
3213	247597	7930482	Helix Resources NL	1987	A21972	1.00	1.00	1.00	1.00	45.00	65.00	20.00
3214	247588	7930499	Helix Resources NL	1987	A21972	1.00	3.00	1.00	4.00	1.00	15.00	5.00
3215	247578	7930517	Helix Resources NL	1987	A21972	1.00	2.00	1.00	2.00	1.00	15.00	5.00
3221	247947	7930266	Helix Resources NL	1987	A21972	1.00	1.00	1.00	1.00	1.00	5.00	3.00
3222	247938	7930284	Helix Resources NL	1987	A21972	1.00	2.00	1.00	1.00	5.00	25.00	10.00
3223	247928	7930301	Helix Resources NL	1987	A21972	1.00	3.00	1.00	3.00	5.00	40.00	10.00
3224	247918	7930319	Helix Resources NL	1987	A21972	1.00	7.00	1.00	3.00	35.00	55.00	10.00
3225	247908	7930336	Helix Resources NL	1987	A21972	1.00	8.00	1.00	4.00	55.00	120.00	20.00
3226	247898	7930353	Helix Resources NL	1987	A21972	1.00	6.00	1.00	6.00	30.00	95.00	10.00
3227	247889	7930371	Helix Resources NL	1987	A21972	1.00	7.00	1.00	2.00	60.00	75.00	35.00
3228	247879	7930388	Helix Resources NL	1987	A21972	1.00	7.00	1.00	3.00	50.00	70.00	25.00



Sample ID	Easting m	Northing M	Company	Year	WAMEX R	Auppb	Asppm	Ptppb	Pdppb	Nippm	Cuppm	Crppm
3229	247869	7930406	Helix Resources NL	1987	A21972	1.00	6.00	1.00	1.00	35.00	140.00	5.00
3230	247859	7930423	Helix Resources NL	1987	A21972	1.00	4.00	1.00	1.00	70.00	95.00	30.00
3231	247850	7930440	Helix Resources NL	1987	A21972	1.00	3.00	1.00	1.00	15.00	110.00	15.00
3232	247840	7930458	Helix Resources NL	1987	A21972	1.00	3.00	1.00	2.00	5.00	85.00	15.00
3233	247830	7930475	Helix Resources NL	1987	A21972	1.00	7.00	1.00	2.00	25.00	65.00	20.00
3234	247820	7930493	Helix Resources NL	1987	A21972	1.00	3.00	1.00	2.00	1.00	35.00	5.00
3235	247811	7930510	Helix Resources NL	1987	A21972	1.00	7.00	1.00	4.00	1.00	35.00	15.00
3236	247801	7930527	Helix Resources NL	1987	A21972	1.00	3.00	1.00	2.00	1.00	75.00	10.00
3237	247791	7930545	Helix Resources NL	1987	A21972	10.00	2.00	1.00	3.00	1.00	45.00	5.00
3238	247781	7930562	Helix Resources NL	1987	A21972	1.00	2.00	1.00	1.00	1.00	205.00	10.00
3239	247771	7930580	Helix Resources NL	1987	A21972	1.00	2.00	1.00	1.00	1.00	60.00	10.00
3240	247762	7930597	Helix Resources NL	1987	A21972	1.00	2.00	1.00	2.00	1.00	55.00	10.00
3241	247752	7930614	Helix Resources NL	1987	A21972	1.00	1.00	1.00	2.00	1.00	30.00	5.00
3242	247742	7930632	Helix Resources NL	1987	A21972	1.00	2.00	1.00	1.00	1.00	25.00	5.00
3243	247732	7930649	Helix Resources NL	1987	A21972	1.00	2.00	1.00	1.00	1.00	25.00	10.00
3244	247723	7930667	Helix Resources NL	1987	A21972	1.00	2.00	1.00	1.00	20.00	45.00	15.00
3245	247713	7930684	Helix Resources NL	1987	A21972	1.00	2.00	1.00	1.00	75.00	55.00	25.00
3246	247703	7930701	Helix Resources NL	1987	A21972	1.00	2.00	1.00	1.00	65.00	55.00	20.00
3247	248170	7930277	Helix Resources NL	1987	A21972	1.00	1.00	1.00	2.00	45.00	10.00	15.00
3248	248160	7930294	Helix Resources NL	1987	A21972	1.00	2.00	1.00	7.00	75.00	15.00	70.00
3249	248151	7930312	Helix Resources NL	1987	A21972	1.00	6.00	15.00	11.00	215.00	105.00	2800.00
3250	248141	7930329	Helix Resources NL	1987	A21972	1.00	1.00	1.00	3.00	20.00	15.00	55.00
3251	248131	7930347	Helix Resources NL	1987	A21972	1.00	1.00	1.00	2.00	30.00	45.00	30.00
3252	248121	7930364	Helix Resources NL	1987	A21972	1.00	1.00	1.00	2.00	20.00	15.00	15.00
3253	248112	7930381	Helix Resources NL	1987	A21972	1.00	3.00	1.00	2.00	25.00	15.00	5.00
3254	248102	7930399	Helix Resources NL	1987	A21972	1.00	2.00	1.00	1.00	25.00	5.00	5.00
3255	248092	7930416	Helix Resources NL	1987	A21972	1.00	1.00	1.00	1.00	25.00	5.00	10.00
3256	248082	7930434	Helix Resources NL	1987	A21972	1.00	8.00	1.00	2.00	50.00	45.00	90.00
3257	248073	7930451	Helix Resources NL	1987	A21972	1.00	2.00	1.00	2.00	30.00	15.00	5.00
3258	248063	7930469	Helix Resources NL	1987	A21972	1.00	8.00	1.00	1.00	35.00	80.00	5.00
3259	248053	7930486	Helix Resources NL	1987	A21972	1.00	2.00	1.00	1.00	20.00	20.00	5.00
3260	248043	7930503	Helix Resources NL	1987	A21972	5.00	2.00	1.00	3.00	15.00	60.00	5.00
3261	248033	7930521	Helix Resources NL	1987	A21972	5.00	4.00	1.00	11.00	45.00	215.00	5.00
3262	248024	7930538	Helix Resources NL	1987	A21972	1.00	3.00	1.00	11.00	35.00	215.00	15.00
3263	248014	7930556	Helix Resources NL	1987	A21972	5.00	4.00	1.00	3.00	65.00	145.00	5.00
3264	248004	7930573	Helix Resources NL	1987	A21972	1.00	3.00	1.00	1.00	60.00	130.00	5.00
3265	247994	7930590	Helix Resources NL	1987	A21972	1.00	4.00	1.00	1.00	45.00	120.00	5.00
3266	247985	7930608	Helix Resources NL	1987	A21972	1.00	4.00	1.00	1.00	55.00	105.00	5.00

Sample ID	Easting m	Northing M	Company	Year	WAMEX R	Auppb	Asppm	Ptppb	Pdppb	Nippm	Cuppm	Crppm
3267	247975	7930625	Helix Resources NL	1987	A21972	1.00	2.00	1.00	1.00	30.00	105.00	10.00
3268	247965	7930643	Helix Resources NL	1987	A21972	1.00	1.00	1.00	1.00	20.00	195.00	10.00
3269	247955	7930660	Helix Resources NL	1987	A21972	1.00	5.00	1.00	2.00	50.00	105.00	15.00
3270	247945	7930677	Helix Resources NL	1987	A21972	1.00	3.00	1.00	1.00	35.00	35.00	5.00
3271	247936	7930695	Helix Resources NL	1987	A21972	1.00	4.00	1.00	1.00	20.00	45.00	5.00
3272	247926	7930712	Helix Resources NL	1987	A21972	1.00	4.00	1.00	1.00	45.00	55.00	15.00
3273	247916	7930730	Helix Resources NL	1987	A21972	1.00	1.00	1.00	1.00	35.00	65.00	10.00
3274	247906	7930747	Helix Resources NL	1987	A21972	1.00	2.00	1.00	1.00	45.00	30.00	15.00
3275	247897	7930764	Helix Resources NL	1987	A21972	1.00	1.00	1.00	1.00	50.00	30.00	15.00
3276	247887	7930782	Helix Resources NL	1987	A21972	1.00	1.00	1.00	1.00	65.00	35.00	15.00
3277	247877	7930799	Helix Resources NL	1987	A21972	1.00	1.00	1.00	1.00	75.00	50.00	20.00
3278	248344	7930375	Helix Resources NL	1987	A21972	1.00	12.00	1.00	11.00	50.00	95.00	530.00
3279	248335	7930392	Helix Resources NL	1987	A21972	1.00	2.00	1.00	11.00	90.00	15.00	40.00
3280	248325	7930410	Helix Resources NL	1987	A21972	1.00	2.00	1.00	11.00	140.00	40.00	240.00
3281	248315	7930427	Helix Resources NL	1987	A21972	1.00	4.00	1.00	11.00	1.00	45.00	145.00
3282	248305	7930444	Helix Resources NL	1987	A21972	10.00	2.00	38.00	80.00	180.00	80.00	1900.00
3283	248295	7930462	Helix Resources NL	1987	A21972	5.00	4.00	5.00	9.00	90.00	185.00	155.00
3284	248286	7930479	Helix Resources NL	1987	A21972	15.00	3.00	76.00	162.00	70.00	105.00	92.00
3285	248276	7930497	Helix Resources NL	1987	A21972	1.00	2.00	1.00	10.00	50.00	25.00	30.00
3286	248266	7930514	Helix Resources NL	1987	A21972	1.00	1.00	1.00	4.00	80.00	15.00	15.00
3287	248256	7930531	Helix Resources NL	1987	A21972	1.00	2.00	1.00	1.00	20.00	20.00	5.00
3288	248247	7930549	Helix Resources NL	1987	A21972	1.00	2.00	1.00	1.00	35.00	95.00	15.00
3289	248237	7930566	Helix Resources NL	1987	A21972	1.00	8.00	1.00	1.00	20.00	45.00	5.00
3290	248227	7930584	Helix Resources NL	1987	A21972	1.00	3.00	1.00	1.00	10.00	15.00	5.00
3291	248217	7930601	Helix Resources NL	1987	A21972	10.00	4.00	1.00	1.00	35.00	65.00	20.00
3292	248207	7930618	Helix Resources NL	1987	A21972	1.00	11.00	1.00	1.00	50.00	55.00	15.00
3293	248198	7930636	Helix Resources NL	1987	A21972	1.00	12.00	1.00	2.00	30.00	75.00	5.00
3294	248188	7930653	Helix Resources NL	1987	A21972	1.00	6.00	1.00	3.00	52.00	95.00	20.00
3295	248178	7930671	Helix Resources NL	1987	A21972	1.00	1.00	14.00	3.00	75.00	115.00	35.00
3296	248168	7930688	Helix Resources NL	1987	A21972	1.00	1.00	1.00	3.00	60.00	155.00	10.00
3297	248159	7930705	Helix Resources NL	1987	A21972	5.00	2.00	1.00	1.00	60.00	195.00	15.00
3298	248149	7930723	Helix Resources NL	1987	A21972	1.00	1.00	1.00	3.00	30.00	105.00	15.00
3299	248139	7930740	Helix Resources NL	1987	A21972	1.00	3.00	1.00	1.00	15.00	85.00	5.00
3300	248129	7930758	Helix Resources NL	1987	A21972	1.00	1.00	1.00	1.00	10.00	35.00	10.00
3301	248120	7930775	Helix Resources NL	1987	A21972	1.00	12.00	1.00	1.00	30.00	160.00	10.00
3302	248110	7930792	Helix Resources NL	1987	A21972	1.00	2.00	1.00	1.00	5.00	45.00	5.00
3303	248100	7930810	Helix Resources NL	1987	A21972	1.00	1.00	1.00	1.00	5.00	75.00	5.00
3304	248090	7930827	Helix Resources NL	1987	A21972	50.00	3.00	1.00	1.00	1.00	50.00	5.00

Sample ID	Easting m	Northing M	Company	Year	WAMEX R	Auppb	Asppm	Ptppb	Pdppb	Nippm	Cuppm	Crppm
3305	248080	7930845	Helix Resources NL	1987	A21972	1.00	5.00	1.00	1.00	15.00	50.00	10.00
3306	248071	7930862	Helix Resources NL	1987	A21972	1.00	2.00	1.00	1.00	5.00	35.00	5.00
3307	248061	7930880	Helix Resources NL	1987	A21972	1.00	2.00	1.00	1.00	15.00	55.00	5.00
3308	248051	7930897	Helix Resources NL	1987	A21972	1.00	1.00	1.00	1.00	5.00	45.00	3.00
3901	248616	7930298	Helix Resources NL	1987	A21972	5.00	2.00	1.00	4.00	10.00	10.00	20.00
3900	248606	7930316	Helix Resources NL	1987	A21972	1.00	1.00	1.00	2.00	10.00	5.00	20.00
3899	248597	7930333	Helix Resources NL	1987	A21972	5.00	2.00	1.00	9.00	50.00	35.00	70.00
3898	248587	7930351	Helix Resources NL	1987	A21972	1.00	3.00	5.00	12.00	115.00	90.00	180.00
3897	248577	7930368	Helix Resources NL	1987	A21972	20.00	3.00	24.00	120.00	350.00	180.00	3400.00
3309	248567	7930385	Helix Resources NL	1987	A21972	25.00	15.00	24.00	92.00	330.00	190.00	2450.00
3310	248557	7930403	Helix Resources NL	1987	A21972	15.00	33.00	22.00	18.00	455.00	220.00	2450.00
3311	248548	7930420	Helix Resources NL	1987	A21972	35.00	16.00	22.00	87.00	272.00	215.00	1450.00
3312	248538	7930438	Helix Resources NL	1987	A21972	5.00	4.00	1.00	8.00	155.00	165.00	300.00
3313	248528	7930455	Helix Resources NL	1987	A21972	5.00	6.00	1.00	5.00	100.00	35.00	35.00
3314	248518	7930473	Helix Resources NL	1987	A21972	1.00	1.00	1.00	1.00	40.00	25.00	10.00
3315	248509	7930490	Helix Resources NL	1987	A21972	1.00	1.00	1.00	3.00	40.00	20.00	5.00
3316	248499	7930507	Helix Resources NL	1987	A21972	1.00	1.00	1.00	1.00	35.00	75.00	5.00
3317	248489	7930525	Helix Resources NL	1987	A21972	1.00	2.00	1.00	1.00	40.00	125.00	5.00
3318	248479	7930542	Helix Resources NL	1987	A21972	1.00	5.00	1.00	4.00	55.00	55.00	5.00
3319	248470	7930560	Helix Resources NL	1987	A21972	5.00	11.00	10.00	14.00	290.00	470.00	35.00
3320	248460	7930577	Helix Resources NL	1987	A21972	1.00	11.00	1.00	1.00	85.00	120.00	35.00
3321	248450	7930594	Helix Resources NL	1987	A21972	1.00	5.00	1.00	1.00	85.00	135.00	40.00
3322	248440	7930612	Helix Resources NL	1987	A21972	1.00	3.00	1.00	3.00	75.00	200.00	10.00
3323	248430	7930629	Helix Resources NL	1987	A21972	1.00	2.00	1.00	1.00	75.00	75.00	10.00
3324	248421	7930647	Helix Resources NL	1987	A21972	1.00	5.00	1.00	6.00	100.00	105.00	60.00
3325	248411	7930664	Helix Resources NL	1987	A21972	1.00	10.00	1.00	7.00	120.00	110.00	55.00
3326	248401	7930681	Helix Resources NL	1987	A21972	15.00	40.00	38.00	80.00	440.00	330.00	2850.00
3327	248391	7930699	Helix Resources NL	1987	A21972	5.00	14.00	109.00	85.00	190.00	100.00	2500.00
3328	248382	7930716	Helix Resources NL	1987	A21972	1.00	3.00	1.00	8.00	75.00	15.00	25.00
3329	248372	7930734	Helix Resources NL	1987	A21972	1.00	3.00	1.00	1.00	35.00	40.00	5.00
3330	248362	7930751	Helix Resources NL	1987	A21972	1.00	7.00	1.00	1.00	20.00	55.00	10.00
3331	248352	7930768	Helix Resources NL	1987	A21972	1.00	6.00	1.00	1.00	15.00	45.00	5.00
3332	248342	7930786	Helix Resources NL	1987	A21972	1.00	14.00	1.00	1.00	25.00	55.00	15.00
3333	248333	7930803	Helix Resources NL	1987	A21972	1.00	8.00	1.00	1.00	50.00	75.00	25.00
3334	248323	7930821	Helix Resources NL	1987	A21972	1.00	7.00	1.00	7.00	55.00	105.00	20.00
3335	248313	7930838	Helix Resources NL	1987	A21972	1.00	2.00	6.00	15.00	70.00	460.00	20.00
3336	248303	7930855	Helix Resources NL	1987	A21972	1.00	3.00	1.00	1.00	65.00	75.00	5.00
3337	248294	7930873	Helix Resources NL	1987	A21972	1.00	8.00	1.00	1.00	40.00	120.00	3.00

Sample ID	Easting m	Northing M	Company	Year	WAMEX R	Auppb	Asppm	Ptppb	Pdppb	Nippm	Cuppm	Crppm
3338	248284	7930890	Helix Resources NL	1987	A21972	1.00	12.00	1.00	1.00	25.00	70.00	5.00
3339	248274	7930908	Helix Resources NL	1987	A21972	1.00	5.00	1.00	1.00	20.00	40.00	5.00
3340	248264	7930925	Helix Resources NL	1987	A21972	1.00	8.00	1.00	1.00	20.00	60.00	5.00
3341	248254	7930942	Helix Resources NL	1987	A21972	1.00	4.00	1.00	1.00	20.00	65.00	5.00
3342	248245	7930960	Helix Resources NL	1987	A21972	1.00	1.00	1.00	1.00	5.00	50.00	3.00
3343	248235	7930977	Helix Resources NL	1987	A21972	1.00	2.00	1.00	1.00	5.00	45.00	5.00
3344	248225	7930995	Helix Resources NL	1987	A21972	1.00	2.00	1.00	1.00	25.00	45.00	15.00
ES0170	249601	7930202	Magma Metals Limited	2008	A77572	1.00		0.00	0.00	9.00	10.00	32.00
ES0171	249601	7930222	Magma Metals Limited	2008	A77572	0.00		0.00	0.00	10.00	15.00	47.00
ES0172	249601	7930242	Magma Metals Limited	2008	A77572	1.00		0.00	0.00	6.00	8.00	45.00
ES0173	249601	7930262	Magma Metals Limited	2008	A77572	2.00		0.00	1.00	19.00	16.00	94.00
ES0174	249601	7930282	Magma Metals Limited	2008	A77572	0.00		0.70	1.00	21.00	14.00	262.00
ES0175	249601	7930302	Magma Metals Limited	2008	A77572	4.00		2.40	5.00	46.00	20.00	717.00
ES0176	249601	7930322	Magma Metals Limited	2008	A77572	8.00		20.00	32.00	496.00	170.00	4420.00
ES0177	249601	7930342	Magma Metals Limited	2008	A77572	3.00		7.30	26.00	222.00	113.00	1550.00
ES0178	249401	7930322	Magma Metals Limited	2008	A77572	0.00		0.60	1.00	15.00	15.00	92.00
ES0179	249401	7930302	Magma Metals Limited	2008	A77572	0.00		3.90	3.00	100.00	65.00	956.00
ES0180	249401	7930282	Magma Metals Limited	2008	A77572	1.00		5.80	4.00	131.00	90.00	1470.00
ES0181	249401	7930262	Magma Metals Limited	2008	A77572	24.00		93.10	177.00	1030.00	98.00	6360.00
ES0182	249401	7930242	Magma Metals Limited	2008	A77572	7.00		8.10	22.00	163.00	44.00	2320.00
ES0183	249401	7930222	Magma Metals Limited	2008	A77572	21.00		6.60	11.00	71.00	29.00	1320.00
ES0184	249401	7930202	Magma Metals Limited	2008	A77572	5.00		4.90	13.00	76.00	21.00	1150.00
ES0185	249401	7930182	Magma Metals Limited	2008	A77572	1.00		0.00	0.00	4.00	7.00	34.00
ES0186	249401	7930162	Magma Metals Limited	2008	A77572	9.00		0.00	0.00	5.00	11.00	38.00
ES0187	249401	7930142	Magma Metals Limited	2008	A77572	0.00		0.00	13.00	7.00	4.00	39.00
ES0188	249201	7930022	Magma Metals Limited	2008	A77572	45.00		0.00	0.00	4.00	23.00	14.00
ES0189	249201	7930042	Magma Metals Limited	2008	A77572	2.00		0.00	0.00	4.00	8.00	32.00
ES0190	249201	7930062	Magma Metals Limited	2008	A77572	0.00		0.00	0.00	4.00	5.00	40.00
ES0191	249201	7930082	Magma Metals Limited	2008	A77572	1.00		0.00	0.00	4.00	5.00	18.00
ES0192	249201	7930102	Magma Metals Limited	2008	A77572	0.00		0.00	0.00	5.00	16.00	29.00
ES0193	249201	7930122	Magma Metals Limited	2008	A77572	1.00		1.30	2.00	28.00	11.00	311.00
ES0194	249201	7930142	Magma Metals Limited	2008	A77572	0.00		1.10	1.00	29.00	14.00	215.00
ES0195	249201	7930162	Magma Metals Limited	2008	A77572	0.00		0.70	1.00	20.00	15.00	42.00
ES0196	249201	7930182	Magma Metals Limited	2008	A77572	1.00		0.60	2.00	13.00	7.00	40.00
ES0197	249201	7930202	Magma Metals Limited	2008	A77572	5.00		1.00	18.00	28.00	19.00	96.00
ES0198	249201	7930222	Magma Metals Limited	2008	A77572	0.00		0.50	0.00	16.00	4.00	75.00
ES0199	249201	7930242	Magma Metals Limited	2008	A77572	0.00		0.60	1.00	19.00	5.00	137.00
ES0200	249201	7930262	Magma Metals Limited	2008	A77572	2.00		2.30	4.00	51.00	19.00	481.00



Sample ID	Easting m	Northing M	Company	Year	WAMEX R	Auppb	Asppm	Ptppb	Pdppb	Nippm	Cuppm	Crppm
ES0201	249201	7930282	Magma Metals Limited	2008	A77572	311.00		1.80	2.00	45.00	13.00	688.00
ES0202	249201	7930302	Magma Metals Limited	2008	A77572	5.00		1.80	4.00	56.00	17.00	473.00
ES0203	249201	7930322	Magma Metals Limited	2008	A77572	2.00		2.50	2.00	59.00	14.00	1030.00
ES0204	249201	7930342	Magma Metals Limited	2008	A77572	4.00		3.30	4.00	62.00	24.00	764.00
ES0205	248801	7930262	Magma Metals Limited	2008	A77572	3.00		4.30	3.00	123.00	84.00	1980.00
ES0206	248801	7930242	Magma Metals Limited	2008	A77572	2.00		2.60	2.00	76.00	49.00	1020.00
ES0207	248801	7930222	Magma Metals Limited	2008	A77572	2.00		1.20	2.00	40.00	19.00	327.00
ES0208	248801	7930202	Magma Metals Limited	2008	A77572	0.00		0.60	1.00	18.00	6.00	137.00
ES0209	248801	7930182	Magma Metals Limited	2008	A77572	1.00		0.60	3.00	16.00	8.00	60.00
ES0210	248801	7930162	Magma Metals Limited	2008	A77572	1.00		0.70	13.00	17.00	6.00	71.00
ES0211	248801	7930142	Magma Metals Limited	2008	A77572	1.00		0.90	5.00	14.00	10.00	75.00
ES0212	248801	7930122	Magma Metals Limited	2008	A77572	1.00		0.80	4.00	14.00	13.00	58.00
ES0213	248801	7930102	Magma Metals Limited	2008	A77572	0.00		0.60	1.00	12.00	10.00	100.00
ES0214	248801	7930082	Magma Metals Limited	2008	A77572	0.00		0.60	6.00	17.00	15.00	114.00
ES0215	248801	7930062	Magma Metals Limited	2008	A77572	3.00		3.20	5.00	86.00	73.00	871.00
ES0216	248801	7930042	Magma Metals Limited	2008	A77572	3.00		1.90	21.00	61.00	111.00	1250.00
ES0217	248801	7930022	Magma Metals Limited	2008	A77572	3.00		1.60	2.00	48.00	99.00	754.00
ES0218	248801	7930002	Magma Metals Limited	2008	A77572	2.00		5.20	4.00	130.00	102.00	4030.00
ES0219	248801	7929982	Magma Metals Limited	2008	A77572	4.00		13.50	27.00	255.00	77.00	5230.00
ES0220	248801	7929962	Magma Metals Limited	2008	A77572	8.00		22.00	47.00	551.00	76.00	1670.00
ES0221	248801	7929942	Magma Metals Limited	2008	A77572	5.00		8.40	28.00	329.00	133.00	1300.00
ES0222	248801	7929922	Magma Metals Limited	2008	A77572	0.00		0.00	0.00	0.00	0.00	0.00
ES0223	248801	7929902	Magma Metals Limited	2008	A77572	6.00		4.80	3.00	401.00	254.00	2670.00
ES0224	248801	7929882	Magma Metals Limited	2008	A77572	6.00		85.00	47.00	825.00	324.00	5150.00
ES0225	248801	7929862	Magma Metals Limited	2008	A77572	5.00		30.90	45.00	583.00	112.00	7200.00
ES0226	248801	7929842	Magma Metals Limited	2008	A77572	10.00		31.70	32.00	425.00	451.00	10000.00
ES0227	248801	7929822	Magma Metals Limited	2008	A77572	5.00		17.50	30.00	842.00	84.00	6860.00
ES0228	248801	7929802	Magma Metals Limited	2008	A77572	1.00		3.80	5.00	88.00	37.00	1650.00
ES0229	248801	7929782	Magma Metals Limited	2008	A77572	32.00		6.00	12.00	98.00	46.00	2420.00
ES0230	248801	7929762	Magma Metals Limited	2008	A77572	2.00		4.00	9.00	75.00	48.00	1130.00
ES0231	248401	7929602	Magma Metals Limited	2008	A77572	2.00		0.90	4.00	17.00	14.00	361.00
ES0232	248401	7929622	Magma Metals Limited	2008	A77572	1.00		0.70	3.00	14.00	11.00	224.00
ES0233	248401	7929642	Magma Metals Limited	2008	A77572	1.00		1.10	5.00	20.00	17.00	198.00
ES0234	248401	7929662	Magma Metals Limited	2008	A77572	4.00		7.50	11.00	232.00	53.00	1550.00
ES0235	248401	7929682	Magma Metals Limited	2008	A77572	19.00		51.60	67.00	766.00	274.00	7270.00
ES0236	248401	7929702	Magma Metals Limited	2008	A77572	6.00		57.90	81.00	815.00	262.00	10000.00
ES0237	248401	7929722	Magma Metals Limited	2008	A77572	9.00		10.40	37.00	721.00	205.00	3180.00
ES0238	248401	7929742	Magma Metals Limited	2008	A77572	10.00		72.20	96.00	990.00	102.00	10000.00

Sample ID	Easting m	Northing M	Company	Year	WAMEX R	Auppb	Asppm	Ptppb	Pdppb	Nippm	Cuppm	Crppm
ES0239	248401	7929762	Magma Metals Limited	2008	A77572	7.00		35.10	28.00	802.00	276.00	5350.00
ES0240	248401	7929782	Magma Metals Limited	2008	A77572	4.00		12.90	34.00	654.00	57.00	3680.00
ES0241	248401	7929802	Magma Metals Limited	2008	A77572	1.00		8.30	12.00	152.00	121.00	2750.00
ES0242	248401	7930102	Magma Metals Limited	2008	A77572	4.00		10.40	18.00	266.00	104.00	2180.00
ES0243	248401	7930122	Magma Metals Limited	2008	A77572	4.00		2.60	6.00	165.00	86.00	227.00
ES0244	248401	7930142	Magma Metals Limited	2008	A77572	2.00		3.00	4.00	112.00	124.00	273.00
ES0245	248401	7930162	Magma Metals Limited	2008	A77572	2.00		4.10	5.00	88.00	126.00	291.00
ES0246	248401	7930182	Magma Metals Limited	2008	A77572	1.00		1.00	1.00	66.00	109.00	133.00
ES0247	248401	7930202	Magma Metals Limited	2008	A77572	1.00		2.50	26.00	62.00	80.00	148.00
ES0248	248401	7930222	Magma Metals Limited	2008	A77572	0.00		2.10	1.00	51.00	81.00	94.00
ES0249	248401	7930242	Magma Metals Limited	2008	A77572	0.00		1.90	1.00	43.00	93.00	108.00
ES0250	248401	7930262	Magma Metals Limited	2008	A77572	1.00		2.20	3.00	89.00	93.00	94.00
ES0251	248401	7930282	Magma Metals Limited	2008	A77572	25.00		7.30	18.00	299.00	326.00	80.00
ES0252	248401	7930302	Magma Metals Limited	2008	A77572	14.00		4.50	12.00	714.00	446.00	1970.00
ES0253	248401	7930322	Magma Metals Limited	2008	A77572	0.00		2.00	2.00	61.00	77.00	71.00
ES0254	248401	7930342	Magma Metals Limited	2008	A77572	118.00		1.90	3.00	42.00	15.00	78.00
ES0255	248401	7930362	Magma Metals Limited	2008	A77572	0.00		1.80	1.00	39.00	14.00	70.00
ES0256	248401	7930382	Magma Metals Limited	2008	A77572	0.00		0.80	0.00	54.00	64.00	117.00
ES0257	248201	7930282	Magma Metals Limited	2008	A77572	12.00		4.00	30.00	277.00	148.00	1580.00
ES0258	248201	7930262	Magma Metals Limited	2008	A77572	1.00		4.00	7.00	50.00	20.00	467.00
ES0259	248201	7930242	Magma Metals Limited	2008	A77572	12.00		43.30	27.00	620.00	339.00	10000.00
ES0260	248201	7930222	Magma Metals Limited	2008	A77572	3.00		95.90	73.00	581.00	258.00	10000.00
ES0261	248201	7930202	Magma Metals Limited	2008	A77572	0.00		5.30	6.00	165.00	86.00	1350.00
ES0263	248201	7930162	Magma Metals Limited	2008	A77572	1.00		4.70	7.00	556.00	260.00	4140.00
ES0264	248201	7930142	Magma Metals Limited	2008	A77572	4.00		6.40	9.00	835.00	221.00	3060.00
ES0265	248201	7930122	Magma Metals Limited	2008	A77572	3.00		12.30	20.00	608.00	164.00	7690.00
ES0266	248201	7930102	Magma Metals Limited	2008	A77572	2.00		41.70	23.00	653.00	154.00	10000.00
ES0267	248201	7930082	Magma Metals Limited	2008	A77572	1.00		14.10	20.00	343.00	109.00	7350.00
ES0268	248201	7930062	Magma Metals Limited	2008	A77572	2.00		14.80	46.00	334.00	101.00	3930.00
ES0269	248201	7930042	Magma Metals Limited	2008	A77572	4.00		25.10	40.00	536.00	106.00	3320.00
ES0270	248201	7930022	Magma Metals Limited	2008	A77572	1.00		12.50	25.00	266.00	71.00	1290.00
ES0271	248201	7930002	Magma Metals Limited	2008	A77572	2.00		11.70	10.00	84.00	51.00	683.00
ES0272	248201	7929982	Magma Metals Limited	2008	A77572	12.00		5.10	3.00	57.00	8.00	1410.00
ES0273	248201	7929962	Magma Metals Limited	2008	A77572	1.00		0.80	0.00	16.00	8.00	457.00
ES0274	248201	7929782	Magma Metals Limited	2008	A77572	0.00		0.90	1.00	42.00	25.00	665.00
ES0275	248201	7929762	Magma Metals Limited	2008	A77572	0.00		0.60	0.00	16.00	4.00	358.00
ES0276	248201	7929742	Magma Metals Limited	2008	A77572	0.00		1.00	1.00	29.00	7.00	550.00
ES0277	248201	7929722	Magma Metals Limited	2008	A77572	6.00		61.30	52.00	651.00	65.00	10000.00

Sample ID	Easting m	Northing M	Company	Year	WAMEX R	Auppb	Asppm	Ptppb	Pdppb	Nippm	Cuppm	Crppm
ES0278	248201	7929702	Magma Metals Limited	2008	A77572	4.00		18.50	36.00	317.00	66.00	5330.00
ES0279	248201	7929682	Magma Metals Limited	2008	A77572	3.00		13.60	26.00	247.00	72.00	1760.00
ES0280	248201	7929662	Magma Metals Limited	2008	A77572	0.00		9.30	8.00	252.00	38.00	2460.00
ES0281	248201	7929642	Magma Metals Limited	2008	A77572	1.00		6.30	12.00	49.00	50.00	243.00
ES0282	248201	7929622	Magma Metals Limited	2008	A77572	1.00		5.30	9.00	40.00	25.00	217.00
ES0283	248201	7929602	Magma Metals Limited	2008	A77572	6.00		1.10	8.00	14.00	40.00	91.00
ES0284	248001	7929482	Magma Metals Limited	2008	A77572	0.00		0.90	0.00	16.00	9.00	442.00
ES0285	248001	7929502	Magma Metals Limited	2008	A77572	0.00		1.30	0.00	22.00	7.00	567.00
ES0286	248001	7929522	Magma Metals Limited	2008	A77572	65.00		3.10	5.00	38.00	17.00	1030.00
ES0287	248001	7929542	Magma Metals Limited	2008	A77572	0.00		5.20	4.00	72.00	18.00	2610.00
ES0288	248001	7929562	Magma Metals Limited	2008	A77572	0.00		3.20	32.00	56.00	16.00	1850.00
ES0289	248001	7929582	Magma Metals Limited	2008	A77572	1.00		3.70	13.00	29.00	9.00	506.00
ES0290	248001	7929602	Magma Metals Limited	2008	A77572	2.00		2.80	12.00	15.00	6.00	171.00
ES0291	248001	7929862	Magma Metals Limited	2008	A77572	11.00		3.20	8.00	34.00	36.00	481.00
ES0292	248001	7929882	Magma Metals Limited	2008	A77572	6.00		11.50	13.00	115.00	46.00	2430.00
ES0293	248001	7929902	Magma Metals Limited	2008	A77572	4.00		6.90	19.00	44.00	15.00	1150.00
ES0294	248001	7929922	Magma Metals Limited	2008	A77572	8.00		18.60	16.00	243.00	70.00	4350.00
ES0295	248001	7929942	Magma Metals Limited	2008	A77572	3.00		13.40	9.00	318.00	70.00	5150.00
ES0296	248001	7929962	Magma Metals Limited	2008	A77572	2.00		12.30	11.00	236.00	81.00	4050.00
ES0297	248001	7929982	Magma Metals Limited	2008	A77572	6.00		45.90	75.00	851.00	203.00	10000.00
ES0298	248001	7930002	Magma Metals Limited	2008	A77572	36.00		19.10	31.00	470.00	155.00	6490.00
ES0299	248001	7930022	Magma Metals Limited	2008	A77572	0.00		5.10	8.00	132.00	53.00	2400.00
ES0300	248001	7930042	Magma Metals Limited	2008	A77572	0.00		3.80	9.00	48.00	56.00	290.00
ES0301	248001	7930062	Magma Metals Limited	2008	A77572	0.00		4.50	7.00	42.00	52.00	80.00
ES0302	248001	7930082	Magma Metals Limited	2008	A77572	0.00		1.60	5.00	28.00	14.00	123.00
ES0303	248001	7930102	Magma Metals Limited	2008	A77572	0.00		1.90	5.00	34.00	28.00	78.00
ES0304	248001	7930122	Magma Metals Limited	2008	A77572	0.00		1.10	3.00	21.00	23.00	83.00
ES0305	247801	7929962	Magma Metals Limited	2008	A77572	4.00		1.80	3.00	65.00	59.00	356.00
ES0306	247801	7929942	Magma Metals Limited	2008	A77572	0.00		2.40	2.00	61.00	82.00	1090.00
ES0307	247801	7929922	Magma Metals Limited	2008	A77572	11.00		8.80	30.00	423.00	232.00	6460.00
ES0308	247801	7929902	Magma Metals Limited	2008	A77572	6.00		15.70	15.00	525.00	213.00	4810.00
ES0309	247801	7929882	Magma Metals Limited	2008	A77572	12.00		76.70	73.00	757.00	456.00	8370.00
ES0310	247801	7929862	Magma Metals Limited	2008	A77572	3.00		15.90	15.00	225.00	89.00	2610.00
ES0311	247801	7929842	Magma Metals Limited	2008	A77572	2.00		15.00	16.00	286.00	86.00	1350.00
ES0312	247801	7929822	Magma Metals Limited	2008	A77572	2.00		12.10	10.00	79.00	70.00	340.00
ES0314	247801	7929782	Magma Metals Limited	2008	A77572	0.00		2.40	2.00	35.00	11.00	275.00
ES0315	247801	7929762	Magma Metals Limited	2008	A77572	3.00		2.40	5.00	23.00	12.00	175.00
ES0316	247801	7929742	Magma Metals Limited	2008	A77572	2.00		1.00	3.00	29.00	8.00	125.00



Sample ID	Easting m	Northing M	Company	Year	WAMEX R	Auppb	Asppm	Ptppb	Pdppb	Nippm	Cuppm	Crppm
ES0317	247801	7929722	Magma Metals Limited	2008	A77572	2.00		1.80	3.00	28.00	21.00	240.00
20209	249034	7929961	Navigator Resources Ltd	2003	A68201	3.00	3.00	1.00	1.00	23.00	19.00	240.00
20210	249025	7929978	Navigator Resources Ltd	2003	A68201	16.00	10.00	10.00	11.00	187.00	63.00	1610.00
20211	249015	7929996	Navigator Resources Ltd	2003	A68201	8.00	5.00	24.00	49.00	545.00	104.00	3090.00
20212	249005	7930013	Navigator Resources Ltd	2003	A68201	70.00	10.00	49.00	33.00	466.00	619.00	5690.00
20213	248995	7930031	Navigator Resources Ltd	2003	A68201	33.00	25.00	9.00	29.00	188.00	229.00	1620.00
20214	248986	7930048	Navigator Resources Ltd	2003	A68201	5.00	10.00	1.00	4.00	41.00	89.00	45.00
20215	248976	7930065	Navigator Resources Ltd	2003	A68201	4.00	20.00	1.00	3.00	9.00	87.00	10.00
20216	248966	7930083	Navigator Resources Ltd	2003	A68201	2.00	3.00	1.00	1.00	14.00	70.00	40.00
20217	248956	7930100	Navigator Resources Ltd	2003	A68201	2.00	3.00	1.00	3.00	22.00	23.00	135.00
20218	248947	7930118	Navigator Resources Ltd	2003	A68201	3.00	3.00	1.00	6.00	14.00	40.00	40.00
20219	248937	7930135	Navigator Resources Ltd	2003	A68201	1.00	5.00	1.00	1.00	13.00	17.00	30.00
20220	248927	7930153	Navigator Resources Ltd	2003	A68201	1.00	15.00	1.00	1.00	18.00	15.00	35.00
20221	248917	7930170	Navigator Resources Ltd	2003	A68201	2.00	10.00	1.00	2.00	34.00	51.00	55.00
20222	248907	7930187	Navigator Resources Ltd	2003	A68201	2.00	5.00	1.00	1.00	23.00	30.00	50.00
20223	248898	7930205	Navigator Resources Ltd	2003	A68201	3.00	10.00	1.00	2.00	12.00	50.00	30.00
20224	248888	7930222	Navigator Resources Ltd	2003	A68201	3.00	10.00	1.00	5.00	18.00	30.00	40.00
20225	249644	7930303	Navigator Resources Ltd	2003	A68201	5.00	3.00	1.00	1.00	7.00	24.00	10.00
20226	249634	7930321	Navigator Resources Ltd	2003	A68201	127.00	3.00	14.00	38.00	153.00	38.00	1260.00
20227	249624	7930338	Navigator Resources Ltd	2003	A68201	63.00	10.00	1.00	3.00	27.00	17.00	250.00
20228	249614	7930355	Navigator Resources Ltd	2003	A68201	79.00	3.00	1.00	3.00	25.00	18.00	275.00
20229	249605	7930373	Navigator Resources Ltd	2003	A68201	15.00	3.00	1.00	2.00	17.00	16.00	130.00
20230	249595	7930390	Navigator Resources Ltd	2003	A68201	8.00	3.00	2.00	3.00	35.00	21.00	515.00
20231	249585	7930408	Navigator Resources Ltd	2003	A68201	3.00	3.00	2.00	6.00	27.00	33.00	300.00
20232	249575	7930425	Navigator Resources Ltd	2003	A68201	1.00	10.00	1.00	2.00	23.00	11.00	250.00
20233	249565	7930442	Navigator Resources Ltd	2003	A68201	2.00	5.00	2.00	3.00	35.00	16.00	220.00
20110	247932	7929479	Navigator Resources Ltd	2003	A68201	3.00	20.00	3.00	7.00	46.00	51.00	240.00
20111	247922	7929497	Navigator Resources Ltd	2003	A68201	6.00	5.00	11.00	24.00	128.00	102.00	1450.00
20112	247912	7929514	Navigator Resources Ltd	2003	A68201	1.00	10.00	1.00	1.00	18.00	10.00	135.00
20113	247902	7929531	Navigator Resources Ltd	2003	A68201	1.00	10.00	1.00	1.00	22.00	12.00	140.00
20114	247892	7929549	Navigator Resources Ltd	2003	A68201	1.00	10.00	1.00	2.00	6.00	5.00	25.00
20115	247883	7929566	Navigator Resources Ltd	2003	A68201	1.00	5.00	1.00	2.00	16.00	10.00	65.00
20116	247873	7929584	Navigator Resources Ltd	2003	A68201	1.00	15.00	1.00	1.00	18.00	6.00	60.00
20117	247863	7929601	Navigator Resources Ltd	2003	A68201	1.00	10.00	1.00	1.00	14.00	9.00	70.00
20118	247853	7929618	Navigator Resources Ltd	2003	A68201	3.00	10.00	1.00	2.00	12.00	12.00	80.00
20119	247844	7929636	Navigator Resources Ltd	2003	A68201	4.00	10.00	1.00	3.00	17.00	13.00	75.00
20120	247834	7929653	Navigator Resources Ltd	2003	A68201	1.00	10.00	1.00	2.00	16.00	12.00	60.00
20121	247824	7929671	Navigator Resources Ltd	2003	A68201	1.00	25.00	1.00	1.00	16.00	12.00	80.00

Sample ID	Easting m	Northing M	Company	Year	WAMEX R	Auppb	Asppm	Ptppb	Pdppb	Nippm	Cuppm	Crppm
20122	247814	7929688	Navigator Resources Ltd	2003	A68201	1.00	10.00	1.00	1.00	19.00	14.00	95.00
20123	247804	7929705	Navigator Resources Ltd	2003	A68201	1.00	15.00	3.00	3.00	31.00	15.00	155.00
20124	247795	7929723	Navigator Resources Ltd	2003	A68201	1.00	5.00	1.00	3.00	15.00	11.00	95.00
20125	247785	7929740	Navigator Resources Ltd	2003	A68201	1.00	15.00	1.00	2.00	22.00	18.00	115.00
20126	247775	7929758	Navigator Resources Ltd	2003	A68201	1.00	3.00	1.00	3.00	63.00	49.00	125.00
20127	247765	7929775	Navigator Resources Ltd	2003	A68201	3.00	10.00	8.00	9.00	54.00	74.00	200.00
20128	247756	7929792	Navigator Resources Ltd	2003	A68201	4.00	10.00	11.00	16.00	60.00	55.00	235.00
20129	247746	7929810	Navigator Resources Ltd	2003	A68201	3.00	15.00	14.00	15.00	206.00	96.00	1020.00
20130	247736	7929827	Navigator Resources Ltd	2003	A68201	17.00	10.00	17.00	19.00	302.00	131.00	1170.00
20131	247726	7929845	Navigator Resources Ltd	2003	A68201	16.00	10.00	15.00	22.00	293.00	182.00	3630.00
20132	247717	7929862	Navigator Resources Ltd	2003	A68201	3.00	5.00	3.00	5.00	97.00	88.00	1620.00
20133	247707	7929879	Navigator Resources Ltd	2003	A68201	2.00	20.00	2.00	2.00	81.00	57.00	1360.00
20134	247697	7929897	Navigator Resources Ltd	2003	A68201	2.00	10.00	1.00	1.00	43.00	27.00	655.00
20135	247687	7929914	Navigator Resources Ltd	2003	A68201	1.00	5.00	1.00	1.00	23.00	14.00	325.00
20136	247677	7929932	Navigator Resources Ltd	2003	A68201	1.00	20.00	1.00	1.00	13.00	13.00	250.00
20137	247668	7929949	Navigator Resources Ltd	2003	A68201	1.00	20.00	1.00	1.00	32.00	35.00	350.00
20138	247658	7929966	Navigator Resources Ltd	2003	A68201	1.00	15.00	1.00	2.00	14.00	15.00	210.00
20139	247648	7929984	Navigator Resources Ltd	2003	A68201	1.00	10.00	1.00	1.00	14.00	13.00	135.00
20140	248309	7929622	Navigator Resources Ltd	2003	A68201	1.00	10.00	3.00	3.00	50.00	17.00	335.00
20141	248299	7929640	Navigator Resources Ltd	2003	A68201	6.00	10.00	5.00	7.00	186.00	49.00	2120.00
20142	248289	7929657	Navigator Resources Ltd	2003	A68201	12.00	3.00	9.00	23.00	289.00	116.00	5820.00
20143	248280	7929675	Navigator Resources Ltd	2003	A68201	7.00	10.00	62.00	83.00	593.00	92.00	9150.00
20144	248270	7929692	Navigator Resources Ltd	2003	A68201	3.00	15.00	15.00	32.00	170.00	107.00	1420.00
20145	248260	7929709	Navigator Resources Ltd	2003	A68201	2.00	3.00	6.00	7.00	307.00	69.00	2230.00
20146	248250	7929727	Navigator Resources Ltd	2003	A68201	5.00	10.00	4.00	10.00	57.00	21.00	310.00
20147	248241	7929744	Navigator Resources Ltd	2003	A68201	1.00	10.00	1.00	1.00	36.00	11.00	635.00
20148	248231	7929762	Navigator Resources Ltd	2003	A68201	11.00	10.00	1.00	2.00	36.00	15.00	790.00
20149	248221	7929779	Navigator Resources Ltd	2003	A68201	5.00	10.00	1.00	1.00	42.00	29.00	1590.00
20150	248211	7929796	Navigator Resources Ltd	2003	A68201	12.00	15.00	1.00	1.00	30.00	9.00	1850.00
20151	248201	7929814	Navigator Resources Ltd	2003	A68201	3.00	10.00	3.00	3.00	43.00	15.00	1120.00
20152	248192	7929831	Navigator Resources Ltd	2003	A68201	1.00	10.00	4.00	5.00	50.00	18.00	975.00
20153	248182	7929849	Navigator Resources Ltd	2003	A68201	3.00	10.00	6.00	8.00	71.00	23.00	615.00
20154	248172	7929866	Navigator Resources Ltd	2003	A68201	3.00	10.00	3.00	7.00	39.00	33.00	355.00
20155	248162	7929883	Navigator Resources Ltd	2003	A68201	2.00	5.00	1.00	2.00	22.00	11.00	180.00
20156	248153	7929901	Navigator Resources Ltd	2003	A68201	5.00	10.00	1.00	1.00	18.00	8.00	100.00
20157	248143	7929918	Navigator Resources Ltd	2003	A68201	3.00	15.00	2.00	8.00	24.00	16.00	130.00
20158	248133	7929936	Navigator Resources Ltd	2003	A68201	2.00	10.00	3.00	5.00	39.00	39.00	265.00
20159	248123	7929953	Navigator Resources Ltd	2003	A68201	5.00	15.00	15.00	18.00	85.00	73.00	645.00

Sample ID	Easting m	Northing M	Company	Year	WAMEX R	Auppb	Asppm	Ptppb	Pdppb	Nippm	Cuppm	Crppm
20160	248113	7929970	Navigator Resources Ltd	2003	A68201	7.00	10.00	15.00	50.00	346.00	85.00	3820.00
20161	248104	7929988	Navigator Resources Ltd	2003	A68201	15.00	3.00	35.00	62.00	390.00	218.00	5260.00
20162	248094	7930005	Navigator Resources Ltd	2003	A68201	28.00	3.00	19.00	111.00	309.00	138.00	1220.00
20163	248084	7930023	Navigator Resources Ltd	2003	A68201	16.00	3.00	31.00	59.00	418.00	174.00	5740.00
20164	248074	7930040	Navigator Resources Ltd	2003	A68201	6.00	10.00	21.00	20.00	361.00	164.00	6210.00
20165	248065	7930057	Navigator Resources Ltd	2003	A68201	9.00	10.00	18.00	30.00	479.00	249.00	6370.00
20166	248055	7930075	Navigator Resources Ltd	2003	A68201	36.00	3.00	111.00	94.00	763.00	550.00	7430.00
20167	248045	7930092	Navigator Resources Ltd	2003	A68201	5.00	3.00	4.00	8.00	58.00	48.00	255.00
20168	248035	7930110	Navigator Resources Ltd	2003	A68201	2.00	5.00	2.00	11.00	25.00	64.00	95.00
20169	248026	7930127	Navigator Resources Ltd	2003	A68201	2.00	5.00	2.00	6.00	8.00	14.00	40.00
20170	248016	7930145	Navigator Resources Ltd	2003	A68201	1.00	10.00	1.00	3.00	11.00	9.00	55.00
20171	248006	7930162	Navigator Resources Ltd	2003	A68201	2.00	15.00	3.00	10.00	30.00	34.00	240.00
20172	247996	7930179	Navigator Resources Ltd	2003	A68201	2.00	3.00	1.00	4.00	11.00	14.00	25.00
20173	248686	7929766	Navigator Resources Ltd	2003	A68201	11.00	3.00	12.00	17.00	351.00	192.00	3560.00
20174	248677	7929783	Navigator Resources Ltd	2003	A68201	35.00	10.00	39.00	74.00	743.00	887.00	3680.00
20175	248667	7929800	Navigator Resources Ltd	2003	A68201	22.00	3.00	79.00	95.00	897.00	192.00	2430.00
20176	248657	7929818	Navigator Resources Ltd	2003	A68201	42.00	3.00	42.00	93.00	809.00	210.00	2880.00
20177	248647	7929835	Navigator Resources Ltd	2003	A68201	20.00	10.00	9.00	15.00	348.00	194.00	2670.00
20178	248638	7929853	Navigator Resources Ltd	2003	A68201	35.00	10.00	4.00	5.00	162.00	125.00	1870.00
20179	248628	7929870	Navigator Resources Ltd	2003	A68201	9.00	10.00	3.00	7.00	44.00	121.00	330.00
20180	248618	7929887	Navigator Resources Ltd	2003	A68201	4.00	10.00	3.00	5.00	53.00	172.00	335.00
20181	248608	7929905	Navigator Resources Ltd	2003	A68201	4.00	15.00	1.00	6.00	41.00	247.00	100.00
20182	248598	7929922	Navigator Resources Ltd	2003	A68201	12.00	5.00	5.00	9.00	45.00	213.00	70.00
20183	248589	7929940	Navigator Resources Ltd	2003	A68201	16.00	5.00	6.00	11.00	113.00	88.00	1450.00
20184	248579	7929957	Navigator Resources Ltd	2003	A68201	5.00	10.00	18.00	39.00	234.00	179.00	3200.00
20185	248569	7929974	Navigator Resources Ltd	2003	A68201	1.00	5.00	6.00	11.00	100.00	44.00	655.00
20186	248559	7929992	Navigator Resources Ltd	2003	A68201	1.00	3.00	1.00	3.00	29.00	15.00	105.00
20187	248550	7930009	Navigator Resources Ltd	2003	A68201	1.00	3.00	1.00	1.00	16.00	9.00	55.00
20188	248540	7930027	Navigator Resources Ltd	2003	A68201	2.00	3.00	1.00	3.00	14.00	11.00	55.00
20189	248530	7930044	Navigator Resources Ltd	2003	A68201	1.00	5.00	1.00	1.00	14.00	7.00	50.00
20190	248520	7930061	Navigator Resources Ltd	2003	A68201	1.00	3.00	1.00	1.00	15.00	11.00	35.00
20191	248510	7930079	Navigator Resources Ltd	2003	A68201	6.00	3.00	1.00	1.00	16.00	12.00	50.00
20192	248501	7930096	Navigator Resources Ltd	2003	A68201	2.00	5.00	1.00	2.00	11.00	13.00	35.00
20193	248491	7930114	Navigator Resources Ltd	2003	A68201	2.00	3.00	1.00	2.00	16.00	24.00	50.00
20194	248481	7930131	Navigator Resources Ltd	2003	A68201	1.00	5.00	1.00	1.00	27.00	37.00	45.00
20195	248471	7930149	Navigator Resources Ltd	2003	A68201	2.00	3.00	1.00	3.00	19.00	19.00	50.00
20196	248462	7930166	Navigator Resources Ltd	2003	A68201	2.00	3.00	5.00	7.00	40.00	26.00	165.00
20197	248452	7930183	Navigator Resources Ltd	2003	A68201	3.00	5.00	8.00	13.00	115.00	71.00	565.00



Sample ID	Easting m	Northing M	Company	Year	WAMEX R	Auppb	Asppm	Ptppb	Pdppb	Nippm	Cuppm	Crppm
20198	248442	7930201	Navigator Resources Ltd	2003	A68201	3.00	5.00	9.00	10.00	152.00	57.00	945.00
20199	248432	7930218	Navigator Resources Ltd	2003	A68201	9.00	3.00	17.00	15.00	339.00	201.00	2000.00
20200	248423	7930236	Navigator Resources Ltd	2003	A68201	24.00	3.00	52.00	54.00	486.00	283.00	3020.00
20201	248413	7930253	Navigator Resources Ltd	2003	A68201	22.00	3.00	56.00	152.00	645.00	302.00	3230.00
20202	248403	7930270	Navigator Resources Ltd	2003	A68201	33.00	10.00	80.00	102.00	753.00	279.00	1190.00
20203	248393	7930288	Navigator Resources Ltd	2003	A68201	17.00	15.00	51.00	87.00	777.00	497.00	3700.00
20204	248383	7930305	Navigator Resources Ltd	2003	A68201	21.00	10.00	136.00	76.00	899.00	400.00	1170.00
20205	248374	7930323	Navigator Resources Ltd	2003	A68201	30.00	15.00	12.00	16.00	807.00	574.00	2290.00
20206	248364	7930340	Navigator Resources Ltd	2003	A68201	44.00	10.00	5.00	17.00	596.00	192.00	1250.00
20207	248354	7930357	Navigator Resources Ltd	2003	A68201	5.00	15.00	2.00	7.00	147.00	165.00	575.00
20208	248344	7930375	Navigator Resources Ltd	2003	A68201	8.00	20.00	11.00	27.00	464.00	306.00	2260.00

## JORC Code (2012) Table 1

### Section 1 Sampling Techniques and Data

The information below is provided in respect of historical exploration results and has been sourced from open file reports available within the Western Australian Minerals Exploration (WAMEX) database, with specific reference numbers indicated in Tables. A and B of Appendix A.

Criteria	JORC Code explanation	Commentary
Sampling techniques	<ul style="list-style-type: none"> <li><i>Nature and quality of sampling (eg cut channels, random chips, or specific specialised industry standard measurement tools appropriate to the minerals under investigation, such as down hole gamma sondes, or handheld XRF instruments, etc). These examples should not be taken as limiting the broad meaning of sampling.</i></li> <li><i>Include reference to measures taken to ensure sample representivity and the appropriate calibration of any measurement tools or systems used.</i></li> <li><i>Aspects of the determination of mineralisation that are Material to the Public Report.</i></li> <li><i>In cases where 'industry standard' work has been done this would be relatively simple (eg 'reverse circulation drilling was used to obtain 1 m samples from which 3 kg was pulverised to produce a 30 g charge for fire assay'). In other cases more explanation may be required, such as where there is coarse gold that has inherent sampling problems. Unusual commodities or mineralisation types (eg submarine nodules) may warrant disclosure of detailed information.</i></li> </ul>	<p>Peako has compiled historical geochemical data from past explorers:</p> <p><b><u>Rock Chip Sampling</u></b></p> <ul style="list-style-type: none"> <li><b>Inco Australia</b> carried out a systematic survey of chromite seams with samples taken across outcropping. The samples were analysed for Ni, Cu, Cr by AAS or for Pt + Pd using a method of concentration by tellurium precipitation prior to AAS analysis.</li> <li><b>Freeport Australasia Inc</b> sampled rock chips from exposed chromite seams and sulphidic ultramafics. Chromite seams were exposed in outcrop and in costeans excavated by previous workers. Samples were analysed for platinum, palladium and gold by Australian Assay Laboratories, Perth. Analyses were done by FA100</li> <li><b>Helix Resources</b> carried out rock chip sampling across chromitite seams, ultramafic, anorthosite and gabbro lithologies. Chromite samples were taken at 100m to 150 m intervals along strike. Samples were analysed for Au, Pt, Pd, Cu, Ni, Cr, As. All samples were prepared and analysed by Analabs, Welshpool. Crushing and disk mill pulverisation was done and the following assay methods used: <ul style="list-style-type: none"> <li>Au: 50g fire assay fusion, AAS finish, 0.005ppm detection limits.</li> <li>Pt, Pd: 50g fire assay fusion, carbon rod finish,</li> </ul> </li> </ul>

Criteria	JORC Code explanation	Commentary
		<p>0.005ppm Pt and 0.001 ppm Pd detection limits Cr, Ni, Cu: 0.2g perchloric digest, AAS finish, 5ppm detection limits on all elements  As: 0.2g aqua regia digest, AAS finish, 1ppm detection limits  Ag: 0.2g aperchloric digest, AAS finish, 0.5ppm detection limits</p> <ul style="list-style-type: none"> <li>• <b>Pancontinental</b> conducted limited rock-chip sampling of prospective rock-types encountered during mapping. Samples were assayed by Sheen Analytical Services Ltd for Pt, Pd, Ru, Rh, Ir, Os and Au. Samples were sorted and dried. Primary preparation was by hammer milling the whole sample. Samples were split to obtain a 50 gm sub-fraction which was then pulverised in a Ring Pulveriser. Au, Pt, Pd, Ru, Rh, Ir and Os were determined by fire assay of the sample (in new pots) using Nickel sulphide as the collection media. The platinoids were recovered from the Nickel Sulphide and analysed by ICP-mass spectrometry.</li> <li>• <b>Navigator</b> collected reconnaissance rock chip samples, predominantly from the exposed eastern portion of the Eastman Bore intrusion. Samples were analysed at Genalysis for Pt, Pd, Au, Cr, Fe, Mg, Ni and Co. The following assay methods were used:  Au, Pd and Pt were assayed using FA25/MS.  Cr, Fe, Mg, Ni and Co were assayed using D/OES (acid digest, ICP Optical Emission Spectrometry).</li> <li>• <b>Magma</b> collected rock chip samples from various locations. Samples were assayed at ALS however analytical procedures and detection limit information was not reported.</li> </ul> <p><b><u>Soil Sampling</u></b></p> <ul style="list-style-type: none"> <li>• <b>Helix Resources</b> carried out systematic soil sampling collected on a 20m x 200m grid with samples taken at 0-15cm</li> </ul>



Criteria	JORC Code explanation	Commentary
		<p>depth from the skeletal soil cover over the intrusion. A 1/16 inch sieve was used to screen rock fragments from all samples. Soil samples were analysed by Analabs, Welshpool for Au, Pt, Pd, Cu, Ni, Cr, As with the following assay methods:</p> <p>Au: 50g fire assay fusion, AAS finish, 0.005ppm detection limits.  Pt, Pd: 50g fire assay fusion, carbon rod finish, 0.005ppm Pt and 0.001 ppm Pd detection limits  Cr, Ni, Cu: 0.2g perchloric digest, AAS finish, 5ppm detection limits on all elements  As: 0.2g aqua regia digest, AAS finish, 1ppm detection limits  Ag: 0.2g aperchloric digest, AAS finish, 0.5ppm detection limits</p> <ul style="list-style-type: none"> <li>• <b>Navigator</b> collected soil samples (500g - 80mesh) at 20m intervals on lines at 200m or 400m spacings covering portions of the Eastman Bore intrusion. Soil samples were analysed by Genalysis for Pt, Pd, Au, Cu, Cr, and As with the following assay methods:  Au, Pd and Pt were assayed using FA25/MS.  Cu, Cr and As were assayed using D/OES (acid digest, ICP Optical Emission Spectrometry).</li> <li>• <b>Magma</b> conducted soil sampling over the basal ultramafic portion of the Eastman mafic-ultramafic intrusion. The soil sampling program comprised 200m spaced north-south oriented sample traverses with samples collected at 20m intervals. Samples were assayed for Pt, Pd and Au using 30g fire assay ICP-MS and multi element analysis conducted using ICP-AES.</li> </ul>
Drilling techniques	<ul style="list-style-type: none"> <li>• Drill type (eg core, reverse circulation, open-hole hammer, rotary air blast, auger, Bangka, sonic, etc) and details (eg core diameter, triple or standard tube, depth of diamond tails, face-sampling bit or other type, whether core is</li> </ul>	Not applicable - no drilling results reported

Criteria	JORC Code explanation	Commentary
	<i>oriented and if so, by what method, etc).</i>	
<i>Drill sample recovery</i>	<ul style="list-style-type: none"> <li>• <i>Method of recording and assessing core and chip sample recoveries and results assessed.</i></li> <li>• <i>Measures taken to maximise sample recovery and ensure representative nature of the samples.</i></li> <li>• <i>Whether a relationship exists between sample recovery and grade and whether sample bias may have occurred due to preferential loss/gain of fine/coarse material.</i></li> </ul>	Not applicable - no drilling results reported
<i>Logging</i>	<ul style="list-style-type: none"> <li>• <i>Whether core and chip samples have been geologically and geotechnically logged to a level of detail to support appropriate Mineral Resource estimation, mining studies and metallurgical studies.</i></li> <li>• <i>Whether logging is qualitative or quantitative in nature. Core (or costean, channel, etc) photography.</i></li> <li>• <i>The total length and percentage of the relevant intersections logged.</i></li> </ul>	Not applicable - no drilling results reported
<i>Sub-sampling techniques and sample preparation</i>	<ul style="list-style-type: none"> <li>• <i>If core, whether cut or sawn and whether quarter, half or all core taken.</i></li> <li>• <i>If non-core, whether riffled, tube sampled, rotary split, etc and whether sampled wet or dry.</i></li> <li>• <i>For all sample types, the nature, quality and appropriateness of the sample preparation technique.</i></li> <li>• <i>Quality control procedures adopted for all sub-sampling stages to maximise representivity of samples.</i></li> <li>• <i>Measures taken to ensure that the sampling is representative of the in situ material collected, including for instance results for field duplicate/second-half sampling.</i></li> <li>• <i>Whether sample sizes are appropriate to the grain size of the material being sampled.</i></li> </ul>	Limited information in available regarding sample preparation, sample sizes, laboratory assay standards and duplicates.
<i>Quality of assay data and</i>	<ul style="list-style-type: none"> <li>• <i>The nature, quality and appropriateness of the assaying and laboratory procedures used and whether the technique is considered partial or total.</i></li> <li>• <i>For geophysical tools, spectrometers, handheld XRF instruments, etc, the parameters used in determining the</i></li> </ul>	<p>Samples were analysed by a variety of commercial laboratories:</p> <p>Helix – Analabs</p> <p>Pancontinental – Sheen Analytical Services</p>

Criteria	JORC Code explanation	Commentary
laboratory tests	<p>analysis including instrument make and model, reading times, calibrations factors applied and their derivation, etc.</p> <ul style="list-style-type: none"> <li>Nature of quality control procedures adopted (eg standards, blanks, duplicates, external laboratory checks) and whether acceptable levels of accuracy (ie lack of bias) and precision have been established.</li> </ul>	<p>Inco – not reported</p> <p>Freeport – Australian Assay Laboratories</p> <p>Navigator – Genalysis</p> <p>Magma – ALS Chemex</p> <p>Gold was determined by fire assay with AAS</p>
Verification of sampling and assaying	<ul style="list-style-type: none"> <li>The verification of significant intersections by either independent or alternative company personnel.</li> <li>The use of twinned holes.</li> <li>Documentation of primary data, data entry procedures, data verification, data storage (physical and electronic) protocols.</li> <li>Discuss any adjustment to assay data.</li> </ul>	<p>Not applicable - no drilling results reported</p> <p>No assay results have been adjusted</p>
Location of data points	<ul style="list-style-type: none"> <li>Accuracy and quality of surveys used to locate drill holes (collar and down-hole surveys), trenches, mine workings and other locations used in Mineral Resource estimation.</li> <li>Specification of the grid system used.</li> <li>Quality and adequacy of topographic control.</li> </ul>	<p>Sampling by Inco, Freeport, Helix and Pancontinental were carried out in local grids.</p> <p>Grid conversion work was undertaken by a prior explorer and location details validated spatially.</p> <p>Sample locations by Navigator and Magma were collected using a handheld GPS (MGA94)</p>
Data spacing and distribution	<ul style="list-style-type: none"> <li>Data spacing for reporting of Exploration Results.</li> <li>Whether the data spacing and distribution is sufficient to establish the degree of geological and grade continuity appropriate for the Mineral Resource and Ore Reserve estimation procedure(s) and classifications applied.</li> <li>Whether sample compositing has been applied.</li> </ul>	<p>The data is not appropriate for use in estimating a Mineral Resource and is not intended for such use. There has been insufficient exploration to define a Mineral Resource and it is uncertain if further exploration will result in the determination of a Mineral Resource.</p> <p>No sample compositing was undertaken.</p>
Orientation of data in relation to	<ul style="list-style-type: none"> <li>Whether the orientation of sampling achieves unbiased sampling of possible structures and the extent to which this is known, considering the deposit type.</li> <li>If the relationship between the drilling orientation and the orientation of key mineralised structures is considered to</li> </ul>	<p>The extent to which sampling achieves unbiased sampling of possible structure is not known.</p>



Criteria	JORC Code explanation	Commentary
<i>geological structure</i>	<i>have introduced a sampling bias, this should be assessed and reported if material.</i>	
<i>Sample security</i>	<ul style="list-style-type: none"> <li><i>The measures taken to ensure sample security.</i></li> </ul>	No information is available; it is assumed that past explorers followed industry guidelines current at the relevant time.
<i>Audits or reviews</i>	<ul style="list-style-type: none"> <li><i>The results of any audits or reviews of sampling techniques and data.</i></li> </ul>	No audits or review have been completed.

## Section 2 Reporting of Exploration Results

(Criteria listed in the preceding sections also apply to this section)

Criteria	JORC Code explanation	Commentary
<i>Mineral tenement and land tenure status</i>	<ul style="list-style-type: none"> <li><i>Type, reference name/number, location and ownership including agreements or material issues with third parties such as joint ventures, partnerships, overriding royalties, native title interests, historical sites, wilderness or national park and environmental settings.</i></li> <li><i>The security of the tenure held at the time of reporting along with any known impediments to obtaining a licence to operate in the area.</i></li> </ul>	<p>Results reported in this announcement are from currently granted Exploration Licence E80/4990, in which Peako's wholly owned subsidiary SA Drilling Pty Ltd has a 100% interest.</p> <p>The tenement is situated within the Gooniyandi Combined #2 Native Title Claim (WC 2000/010) and Determination (WCD2013/003).</p> <p>The tenement is current and in good standing with all statutory commitments being met as and when required.</p> <p>There are no known impediments to obtaining a licence to operate pending the normal approvals process.</p>
<i>Exploration done by other parties</i>	<ul style="list-style-type: none"> <li><i>Acknowledgment and appraisal of exploration by other parties.</i></li> </ul>	<p>Historical exploration within the tenement area has been undertaken by numerous parties, commencing with Pickands Mather in 1967.</p> <p>Refer Peako Limited ASX release dated 15 August 2018, Appendix 3 and 28 November 2019, Appendix C for overview of exploration historically undertaken on the tenement.</p>
<i>Geology</i>	<ul style="list-style-type: none"> <li><i>Deposit type, geological setting and style of mineralisation.</i></li> </ul>	<p>The Eastman Bore layered ultramafic-mafic intrusion, which belongs to the "Lamboos Ultramafics" suite (1835 Ma), outcrops in the southeast of E80/4990. It intrudes the Koongie Park Formation. The eastern portion of the intrusion is 8km long (exposed for 6km strike and 2km of strike under black soil cover). It is 950m thick in the east and thinning towards</p>

Criteria	JORC Code explanation	Commentary
		<p>the west. The sequence dips steeply to the south and is overturned. The primary magmatic stratigraphy consists of a “Lower Ultramafic” (peridotite) layer at the base that is about 250m thick, a “Central Anorthosite” layer about 350m thick, a thin “Upper Ultramafic” layer, followed by an “Upper Gabbro” layer about 350m thick. The ultramafic layers contain abundant magnetite (ferrichromite?) and are mapped by prominent curvilinear magnetic anomalies. The igneous layering gets “younger” towards the north but dips steeply to the south indicating it is overturned. Faults and folds have deformed the intrusion. Dolerite dykes that traverse the intrusion appear to be more common in the east and less common in the west. Chloritic shears and quartz veins are present around the margins of the Eastman Bore layered intrusion.</p> <p>Minor disseminated sulphides (pyrite, chalcopyrite and sphalerite) are common within in the ultramafics of the Eastman Bore layered intrusion. Sulphide blebs have been reported near the base of the Lower Ultramafic. Agate boulders with abundant chalcopyrite have been found near the base of the Upper Ultramafic at one site. Malachite-bearing chloritic shear zones, 100 to 300m long and 0.3-3.3m wide, have been identified along the southeast basal contact of the Upper Ultramafic. There is minor localised Cu mineralisation in sheared metasediments along the footwall contact with the Lower Ultramafic.</p> <p>There are multiple, stacked, “poddy”, chromitite seams, 0.05m to 1.25m in thickness, in the Lower and Upper ultramafic layers of the Eastman Bore</p> <p>The morphology of the mineralisation as well as the structural make up is not well understood.</p>
Drill hole Information	<ul style="list-style-type: none"> <li>A summary of all information material to the understanding of the exploration results including a tabulation of the following information for all Material drill holes: <ul style="list-style-type: none"> <li>easting and northing of the drill hole collar</li> <li>elevation or RL (Reduced Level – elevation above sea level in metres) of the drill hole collar</li> </ul> </li> </ul>	Not applicable - no drilling results reported