



ALICE QUEEN  
LIMITED

## A.G.M. PRESENTATION

30 NOVEMBER 2016

# DISCLAIMER



ALICE QUEEN  
LIMITED

## FORWARD LOOKING STATEMENTS

*This presentation may contain certain forward-looking statements that have been based on current expectations about future acts, events and circumstances. These forward-looking statements are, however, subject to risks, uncertainties and assumptions that could cause those acts, events and circumstances to differ materially from the expectations described in such forward-looking statements. These factors include, among other things, commercial and other risks associated with estimation of reserves, the meeting of objectives and other investment considerations, as well as other matters not yet known to the Company or not currently considered material by the Company. Alice Queen Limited accepts no responsibility to update any person regarding any error or omission or change in the information in this presentation or any other information made available to a person or any obligation to furnish the person with further information.*

## COMPETENT PERSON STATEMENT

*Any information in this presentation that relates to previously unreported Exploration Results, is based on information compiled by Mr John Holliday, a Competent Person who is a member of the Australian Institute of Geoscientists. Mr Holliday is Chief Technical Advisor to Alice Queen Limited. Mr Holliday has sufficient experience that is relevant to the style of mineralisation and type of deposit under consideration and to the activity being undertaken to qualify as a Competent Person as defined in the 2012 edition of the "Australasian Code for Reporting of Exploration Results, Mineral Resources and Ore Reserves". Mr Holliday consents to the inclusion in this report of the matters based on his information in the form and context in which it appears.*

# CORPORATE OVERVIEW



ALICE QUEEN  
LIMITED

## CAPITAL STRUCTURE

AQX [Ordinary Shares on Issue]	222M
AQXO [Options, 3c exp 30 Sep 2017]	124M
Market Cap [at \$ 0,035]	A\$7.770M

## MAJOR SHAREHOLDERS [as at 30 March 2016]

Andrew Buxton	18.4%
Mark Kerr	9.15%
Monzonite Investments	8.43%
Maplefern Pty Ltd	7.83%
Finico ATF Morris Family	5.2%
Top 20	64.87%

## BOARD AND MANAGEMENT



**Phil Harman**

Non-Executive Chairman



**Andrew T Buxton**

Managing Director



**Mark Kerr**

Non-Executive Director

# CORPORATE OVERVIEW



ALICE QUEEN  
LIMITED



ALICE QUEEN  
LIMITED

84.5%

90.0%

Kauraru Gold Pty Ltd

JV with the Kaurareg Aboriginal Land Trust

Torres Strait  
QLD

Monzonite Metals Pty Ltd

Molong Volcanic Belt  
NSW



# CORPORATE OVERVIEW



ALICE QUEEN  
LIMITED

## Company Achievements

November 2015

- Successfully listed on ASX, raising \$3.5M

December 2015

- Commenced maiden drill program at EPM 25520 Horn Island

March 2016

- EPM 25418 Kaiwalagal granted, expanding Torres Strait footprint

June 2016

- Completed 13 hole maiden drill program at EPM25520 Horn Island

July 2016

- Pioneer Lode identified, JORC 2012 Exploration Target defined

September 2016

- Awarded NSW Government, New Frontiers Cooperative Drilling Grant for EL 8225 Looking Glass

October 2016

- Field programs at EPM 25520 Horn Island completed, additional exploration targets identified

November 2016

- Maiden drill hole at EL8225 Looking Glass confirms northern extension of Molong Volcanic Belt & porphyry mineralisation

November 2016

- EL 8469 Mendooran granted, significantly expanding Molong Volcanic Belt ground holding

November 2016

- Metallurgical test work delivers 91.2% gravity only gold recovery, making the path to production at Horn Island far simpler



ALICE QUEEN  
LIMITED

EXPLORATION



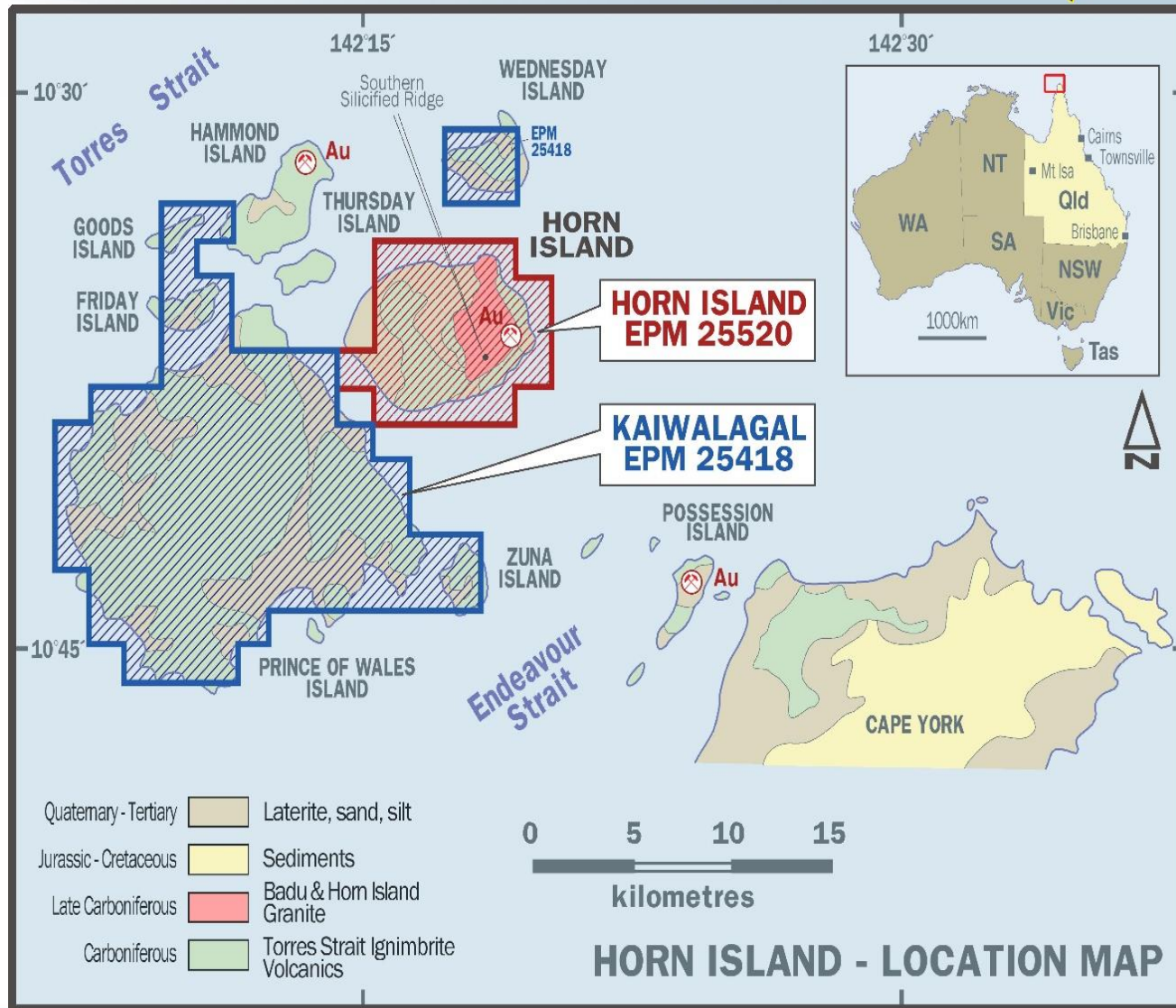


EXPLORATION – HORN ISLAND

# EXPLORATION - HORN ISLAND



ALICE QUEEN  
LIMITED



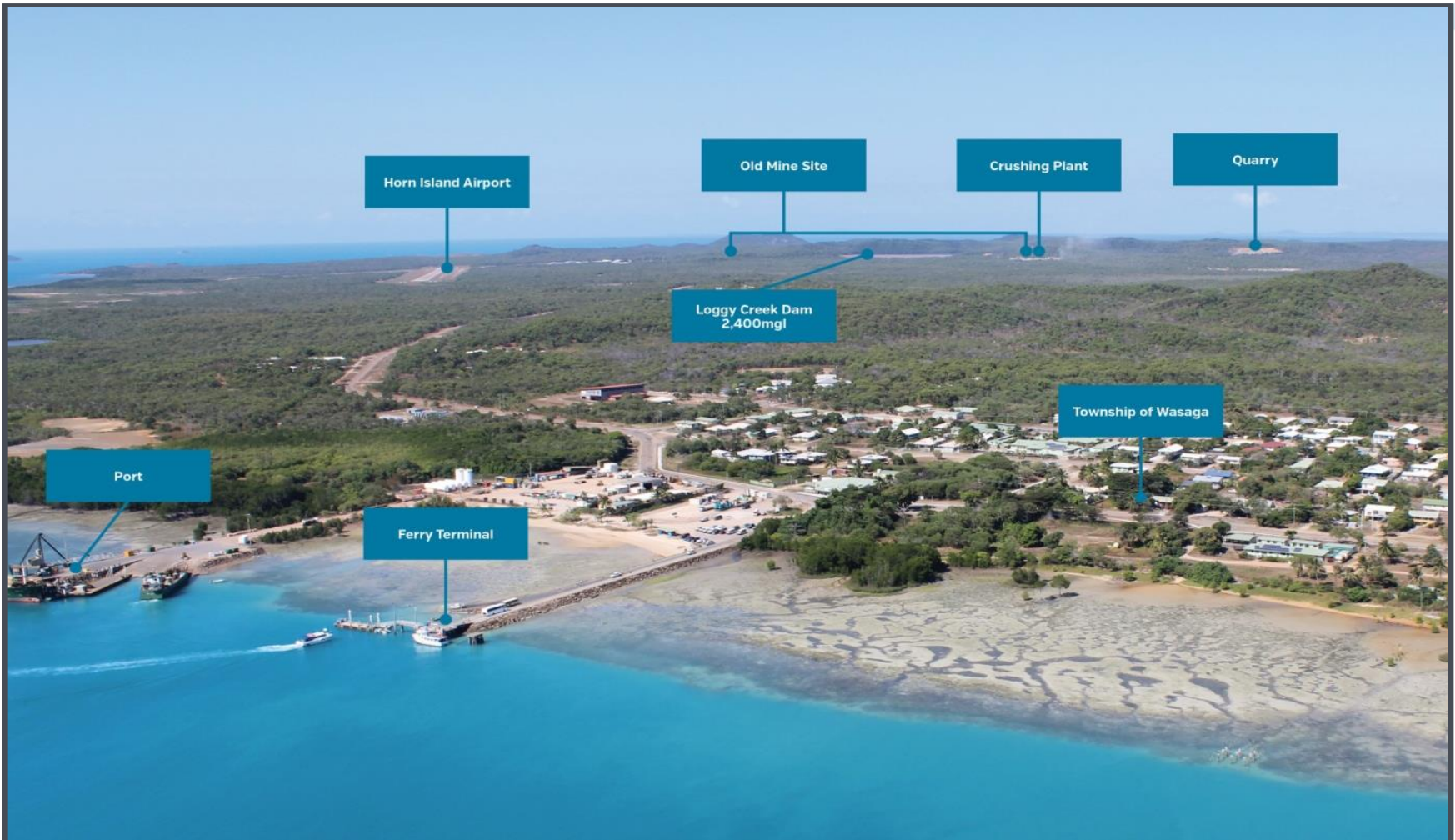


# EXPLORATION - HORN ISLAND



ALICE QUEEN  
LIMITED

## EXCELLENT INFRASTRUCTURE





### HORN ISLAND ACHIEVEMENTS

#### Maiden Drill Program

- 13 Hole HQ 3 diamond core program
- Mineralisation confirmed to depth and along strike

#### Pioneer Lode Identified

- JORC 2012 ET of 190,000 Oz infill drill ready at Pioneer Lode \*

#### Metallurgical test work on Pioneer Lode

- Gravity only gold recovery of 91.2% \*

#### Horn Island Mineral Field

- Comprehensively mapped and sampled, results expected December 2016 \*

#### Exploration upside is considerable

- Historic pit area open along NW/SE strike
- Southern Silicified Ridge emerging gold foot print \*

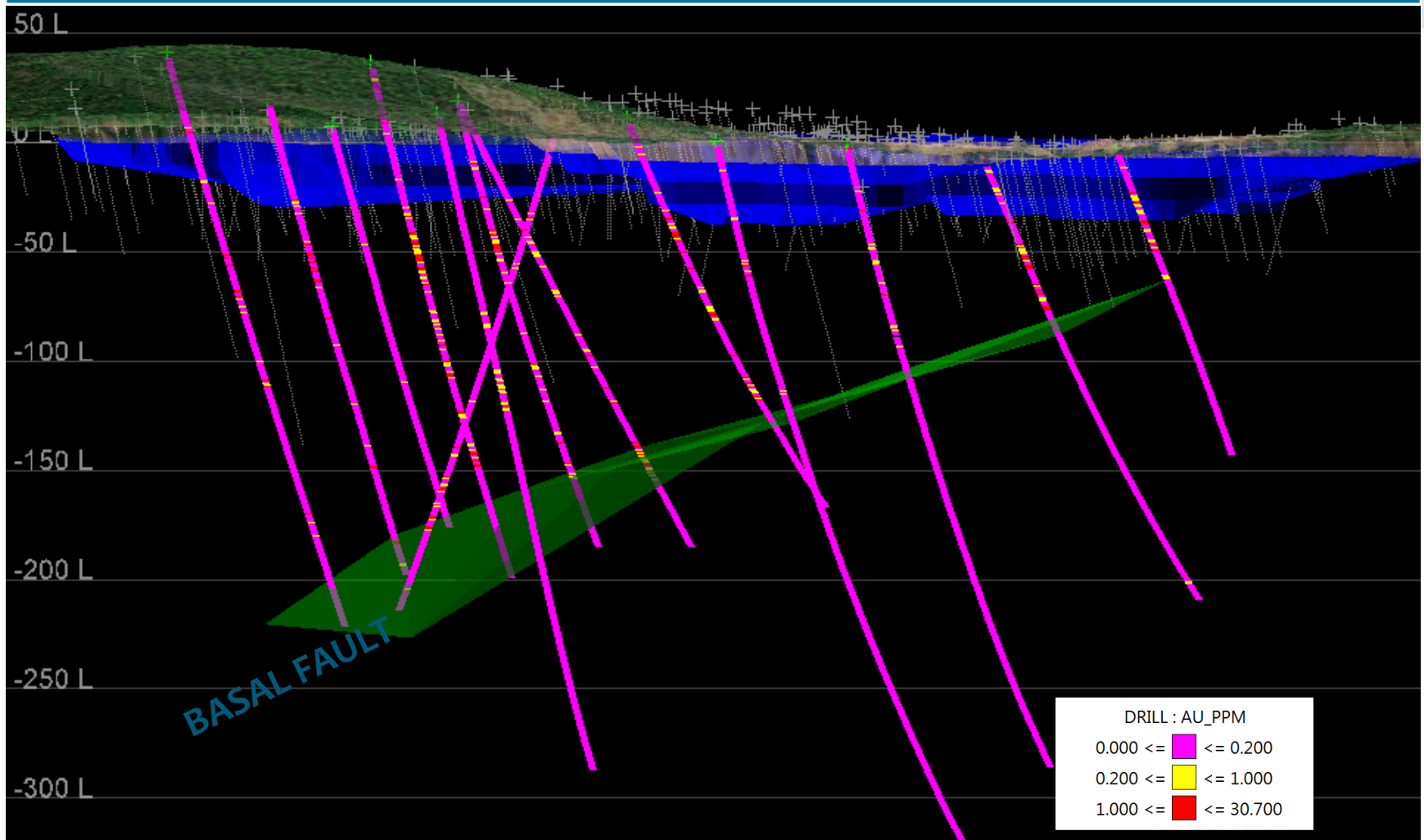
\* Refer to ASX Announcements, 26/2/16, 7/4/16, 10/6/16, 19/8/16 and 06/09/2016

# EXPLORATION - HORN ISLAND



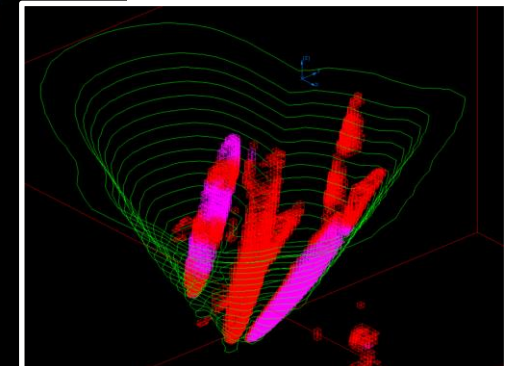
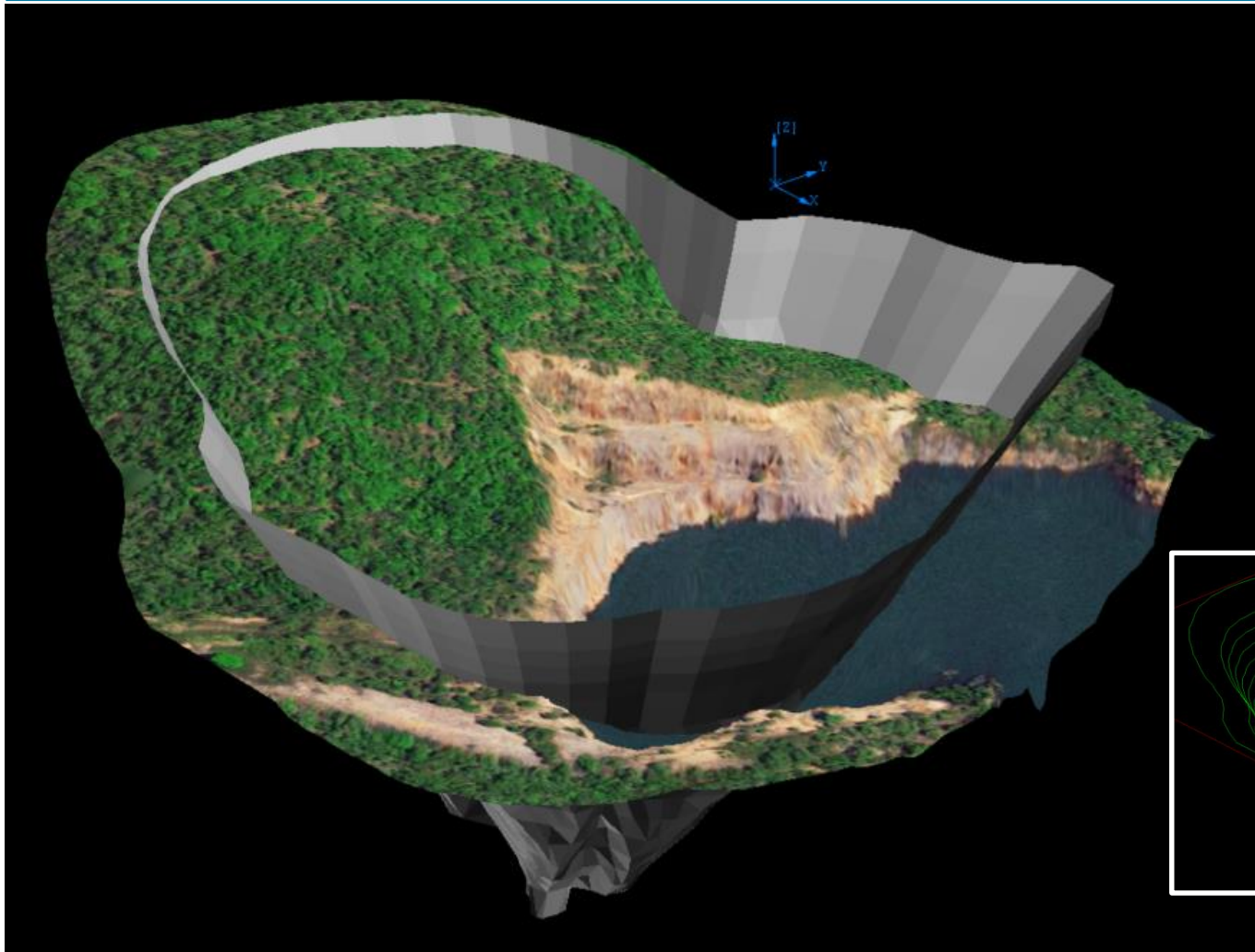
ALICE QUEEN  
LIMITED

## MAIDEN DRILL PROGRAM COMPLETED





## PIONEER LODGE IS READY FOR INFILL DRILLING



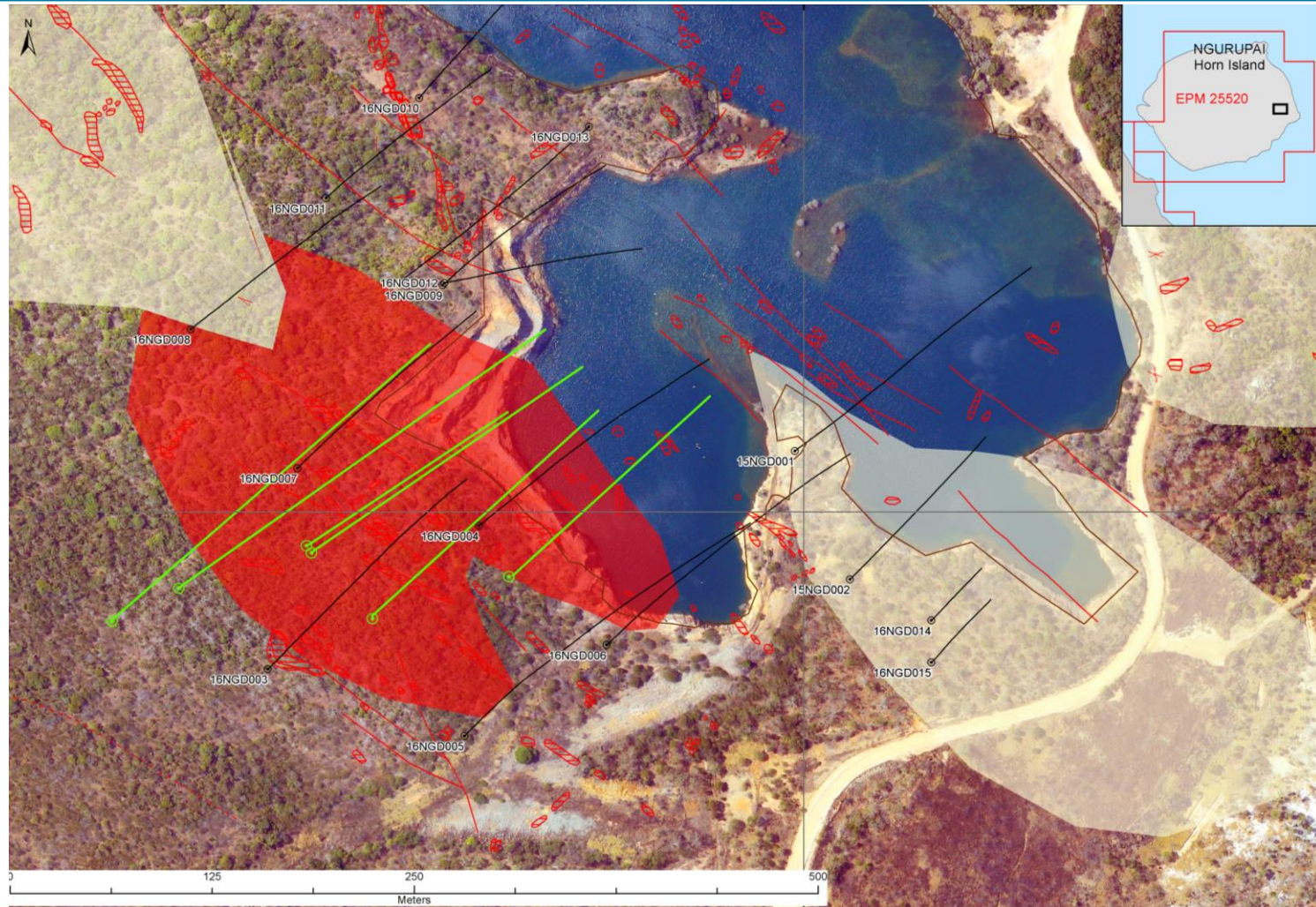


# EXPLORATION – HORN ISLAND



ALICE QUEEN  
LIMITED

## PIONEER LODGE INFILL DRILL PLAN



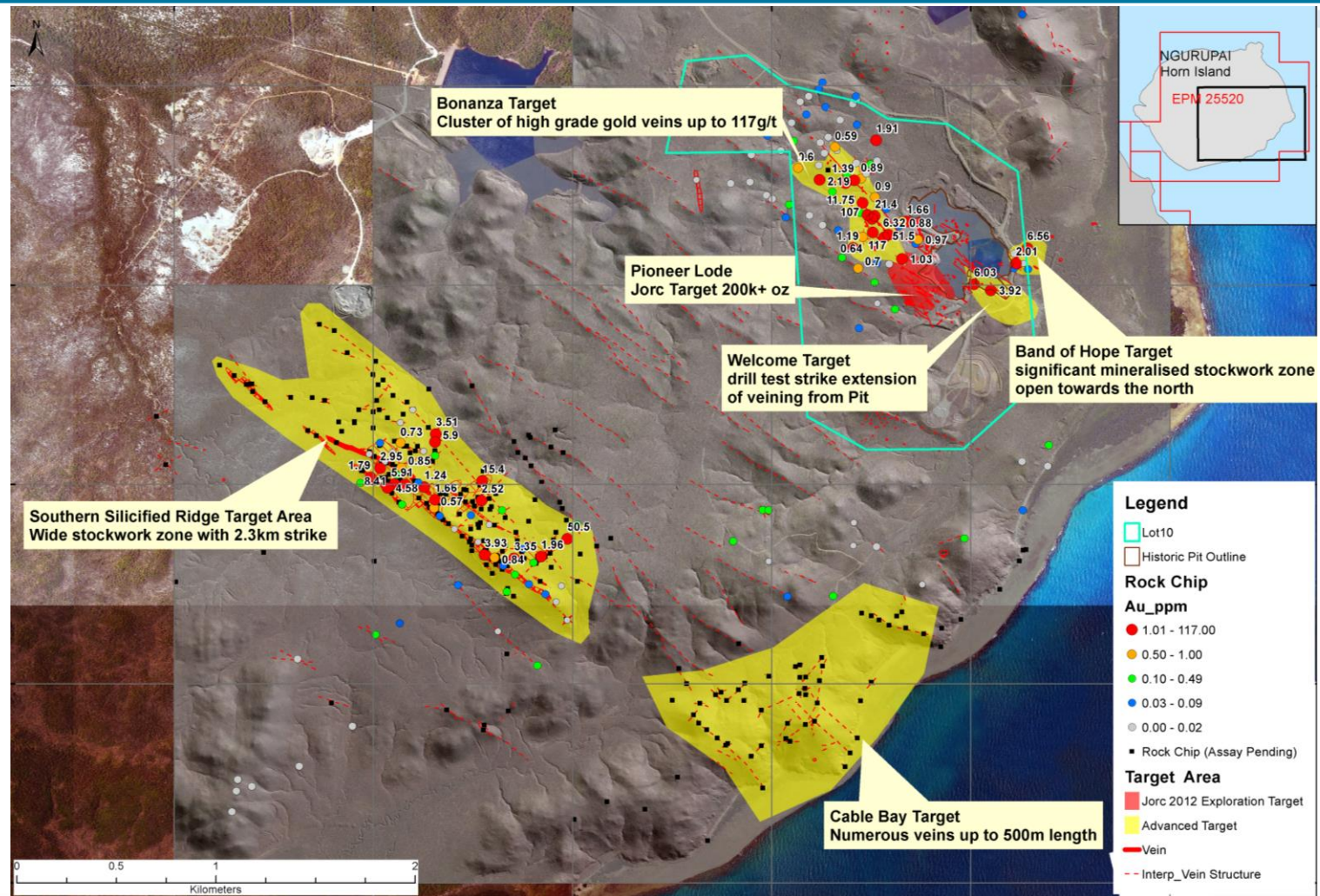


# EXPLORATION – HORN ISLAND



ALICE QUEEN  
LIMITED

## FIELD PROGRAM EXPOSES EXPLORATION UPSIDE





### METALLURGICAL TEST WORK RETURNS 91.2% GRAVITY ONLY GOLD RECOVERY

	Gravity only gold recovery	• 91.2% in to 4.9% of the mass at a concentrate grade of 44.3 g/t Au
	Gravity plus flotation gold recovery	• 95.1% in to 5.1% of the mass at a concentrate grade of 44.6 g/t Au
	Gravity, flotation plus leaching	• Total gold recovery of 98.8%
	Gekko Python System	• Sample found to be amenable to proven technology
	Process Flowsheet	• Economics of gravity and flotation being prepared

\*ASX Announcement 17 November 2016

## EXPLORATION – HORN ISLAND



ALICE QUEEN  
LIMITED

### HORN ISLAND – A NEAR TERM PRODUCTION OPPORTUNITY

#### Resource Definition

- Six hole infill drill program planned at Pioneer Lode

#### Maiden Resource

- JORC 2012 Inferred Resource Pioneer Lode

#### Mining Lease Application

- Horn Island encompassing old mine site including Pioneer Lode

#### Exploration upside

- NW/SE along strike
- Southern Silicified Ridge
- Cable Bay

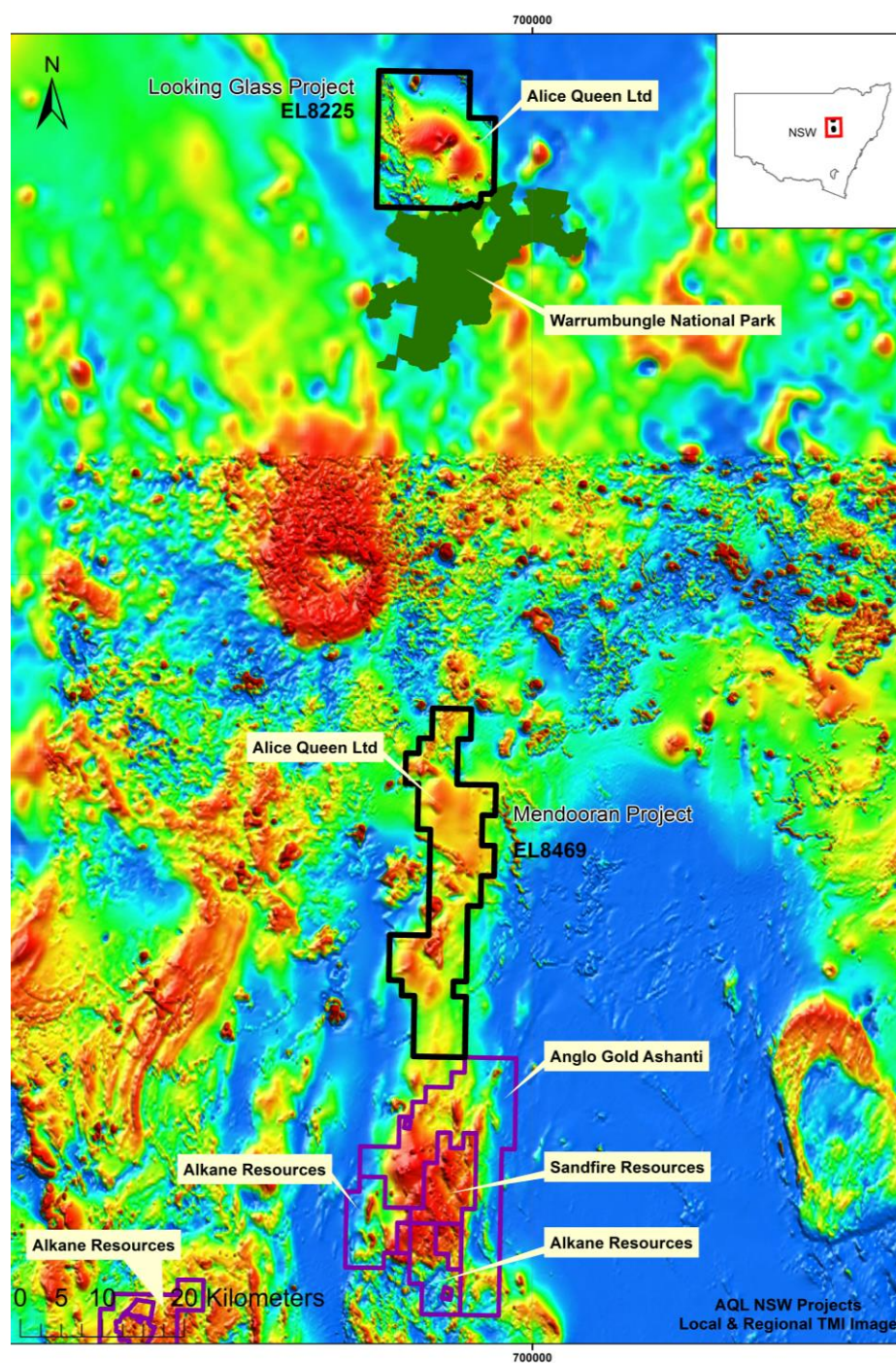




EXPLORATION – MOLONG VOLCANIC BELT



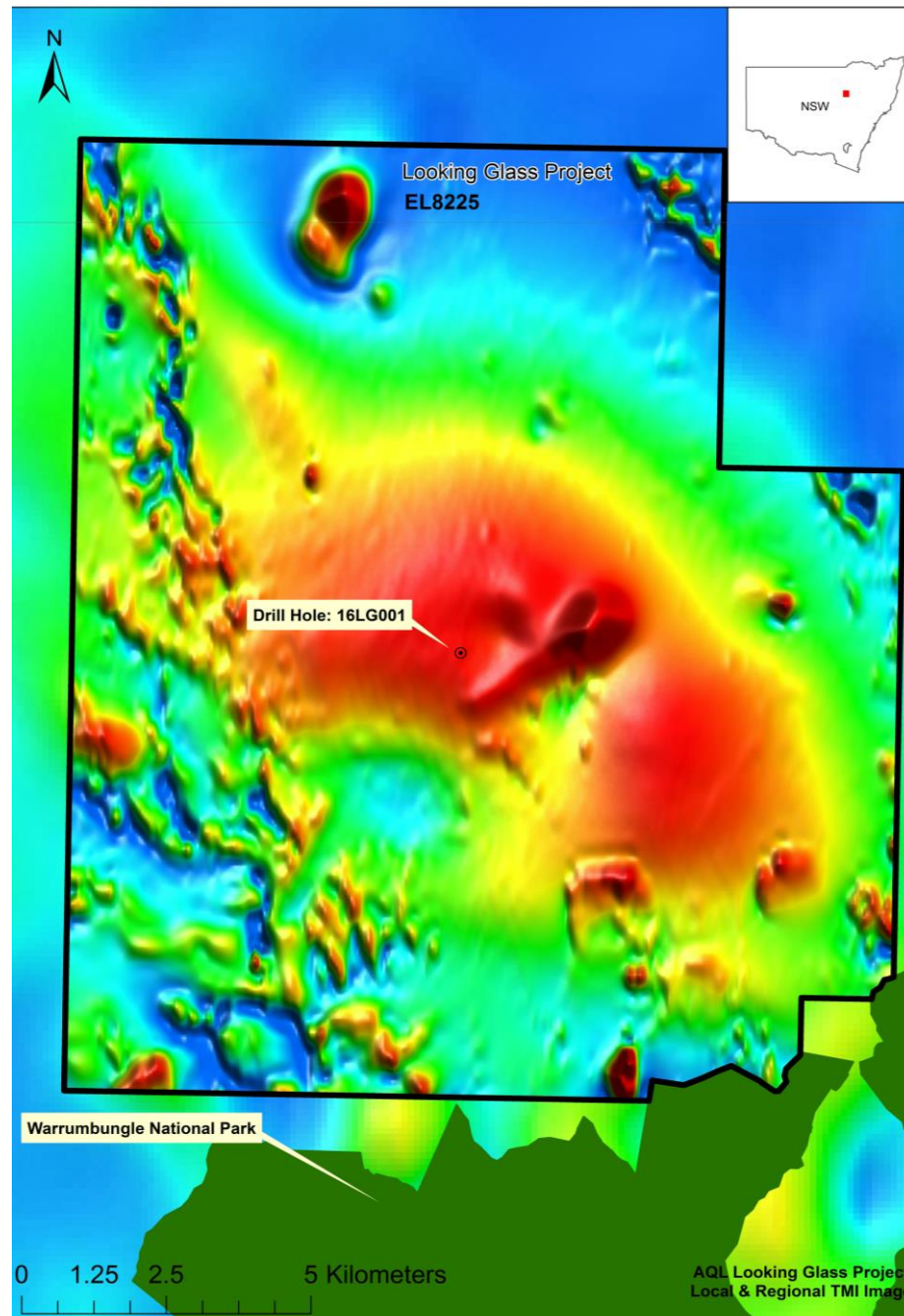
# MO LONG VOLCANIC BELT REGIONAL CONTEXT



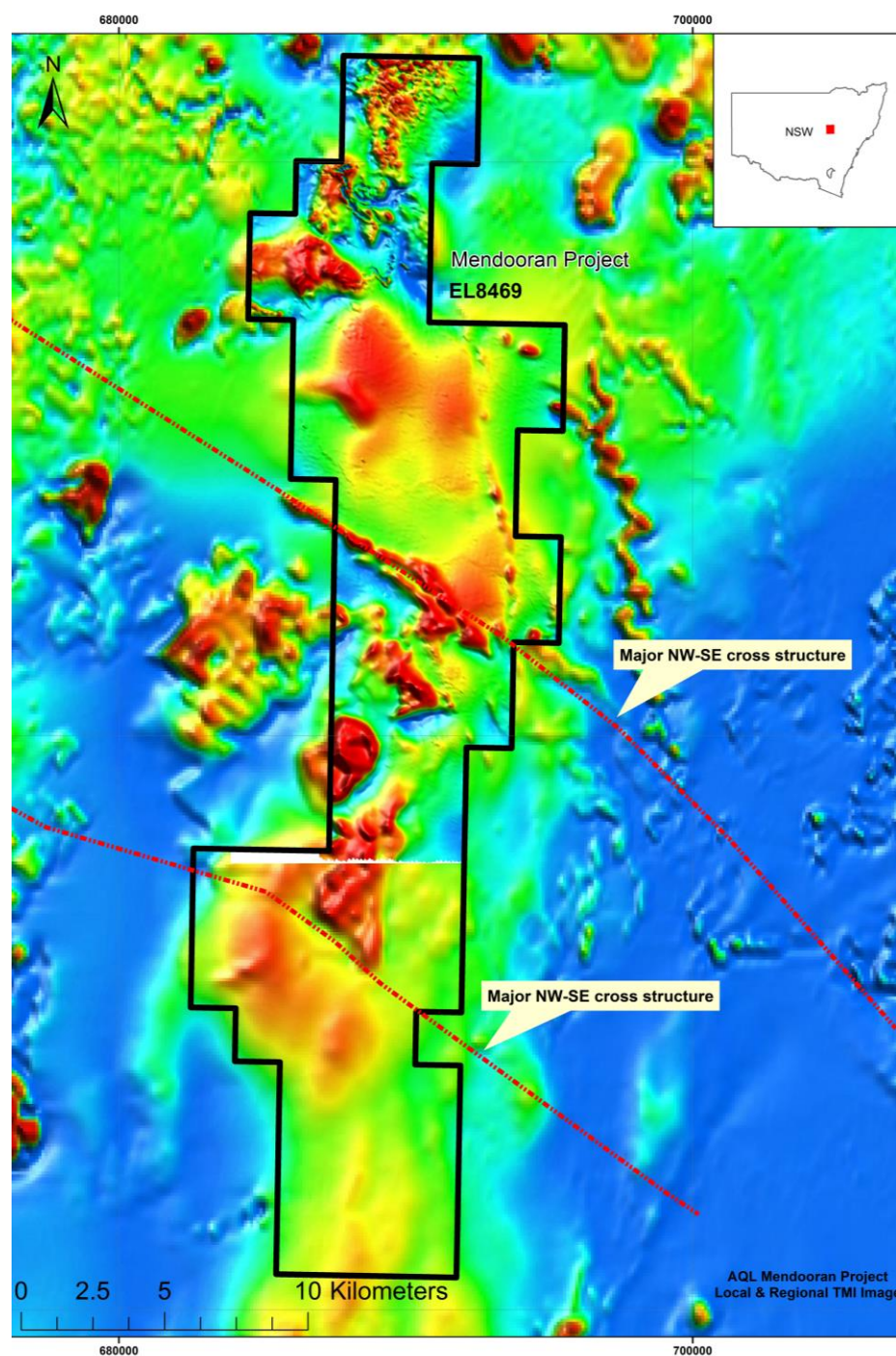
ALICE QUEEN  
LIMITED



# LOOKING GLASS GEOPHYSICAL TARGETS AND DRILL HOLE



# MENDOORAN HAS POSSIBLY SIX GEOPHYSICAL TARGETS



## LOOKING GLASS- ACHIEVEMENTS



ALICE QUEEN  
LIMITED

### MO LONG VOLCANIC BELT, NEW ERA OF EXPLORATION BEGINS

#### Molong Volcanic Belt

- Confirmation that Molong Volcanic Belt continues northwards undercover

#### Northern under cover extension

- Looking Glass and Mendooran represent most prospective areas in new domain

#### Geophysical Targets

- Airborne magnetics have been completed for both tenements
- Two geophysical targets identified at Looking Glass
- Six geophysical targets identified at Mendooran

#### Grant

- Alice Queen awarded NSW Government, New Frontiers Collaborative Drilling Grant
- \$ 190,000.00 Grant towards drilling at Looking Glass



### FOUR MEASURES OF SUCCESS

1

- Penetrate sedimentary cover sequence at reasonable depth [522mbs]

2

- Confirm basement comprises Molong Volcanic Belt rocks

3

- Significant epidote-magnetite-hematite alteration

4

- Visible porphyry style mineralisation [chalcopyrite veinlets]



# LOOKING GLASS - ACHIEVEMENTS



ALICE QUEEN  
LIMITED

## LOOKING GLASS, CORE PHOTO CHALCOPYRITE







### MOVING FORWARD ALICE QUEEN PLANS TO;

Evaluate data from hole 1 at Looking Glass  
(assays, geochem, age dating and  
petrography)

Refine geophysical model with data from hole 1

Determine best location for hole 2 at Looking Glass

Develop a drill plan for EL 8469 Mendooran

Explore  
JV  
options



## IN SUMMARY

Bring Horn Island into small scale production as soon as possible

Discover a world class porphyry deposit in the Molong Volcanic Belt in NSW