

## OPERATIONS

- RC drilling at Redcliffe Gold Project returned high-grade results from Nambi and Golden Terrace South (GTS) deposits
- Encouraging early stage RC drill results from Bindy and KT-1 prospects, with Bindy mineralisation extended to +800m of strike
- Drilling set to recommence within days to target extensions to Nambi and GTS, and in-fill Bindy
- Company increased footprint in Leonora region with acquisition of Nambi East Project

## CORPORATE

- Subsequent to end of Quarter, NTM raised \$1.5m in heavily oversubscribed placement
- Andrew Muir appointed Managing Director and Edward (Ted) van Heemst appointed as Non-Executive Director

## HIGHLIGHTS FROM DRILLING DURING THE QUARTER

### NAMBI DEPOSIT (single metres)

#### E2 LODE

**3m @ 14.2 g/t Au (Incl. 1m @ 34.3 g/t Au)**

**2m @ 8.98 g/t Au**

#### MAIN LODE

**6m @ 4.61 g/t Au (Incl. 4m @ 5.76 g/t Au)**

**5m @ 4.00 g/t Au (Incl. 1m @ 12.60 g/t Au)**

**3m @ 8.44 g/t Au (Incl. 2m @ 12.25 g/t Au)**

### GOLDEN TERRACE SOUTH DEPOSIT (single metres)

**16m @ 2.71 g/t Au (Incl. 5m @ 5.99 g/t Au)**

**14m @ 3.50 g/t Au (Incl. 4m @ 6.40 g/t Au)**

**12m @ 2.65 g/t Au (Incl. 3m @ 5.90 g/t Au)**

### BINDY & KT-1 PROSPECTS (5m composites & single metres\*)

**30m @ 1.92 g/t Au (Incl. 20m @ 2.50 g/t Au)**

**7m @ 5.17 g/t Au (Incl. 3m @ 10.78 g/t Au)\***

**4m @ 3.70 g/t Au (Incl. 2m @ 6.42 g/t Au)\***

## OPERATIONS REPORT

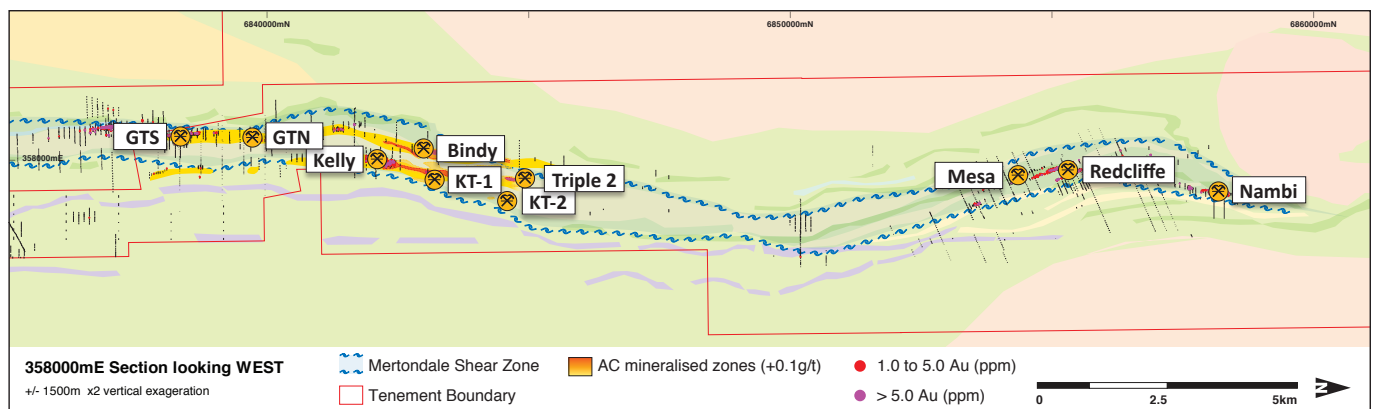
During the Quarter, NTM Gold Limited (ASX: NTM) ("NTM" or "the Company") continued drilling priority targets at its 100% owned Redcliffe Gold Project ("Redcliffe" or "the Project"), located near Leonora in the Eastern Goldfields of Western Australia. The Project covers the northern extent of the highly prospective Mertondale shear.

The RC drilling program consisted of 24 holes for 4,976m (NBRC118-127, GTRC441-454). The drilling successfully intersected high-grade extensions of the mineralisation at both Nambi and GTS, as well as providing further encouragement at Bindy. In addition, the single metre results from the September RC drilling campaign were returned during the Quarter.

The drilling campaign capped off a very successful calendar year for the Company, which included:

- **Intersection of high-grade extensions in drilling of known systems at both Nambi and GTS; and**
- **The discovery of new mineralised zones at Bindy and KT-1 through systematic regional exploration.**

The good results from both early stage and extensional drilling continue to highlight the prospectivity of the Mertondale Shear Zone, with many more kilometres of strike yet to be tested,



Redcliffe Gold Project. Deposit/Prospect locations.

## Nambi Deposit

All single metre sample results have been received for the drilling completed at Nambi during the Quarter, with the final assays reported to ASX on 11 January 2018.

In the December program, a total of 10 holes were completed for 1,992m, targeting the three mineralised lodes Main, E1 and E2. The Main Lode was the centre for historical open pit mining in the 1990s to depths of about 60m over 400m of strike.

Historically, little attention was paid to the E1 or E2 lodes, with both only lightly drill tested.

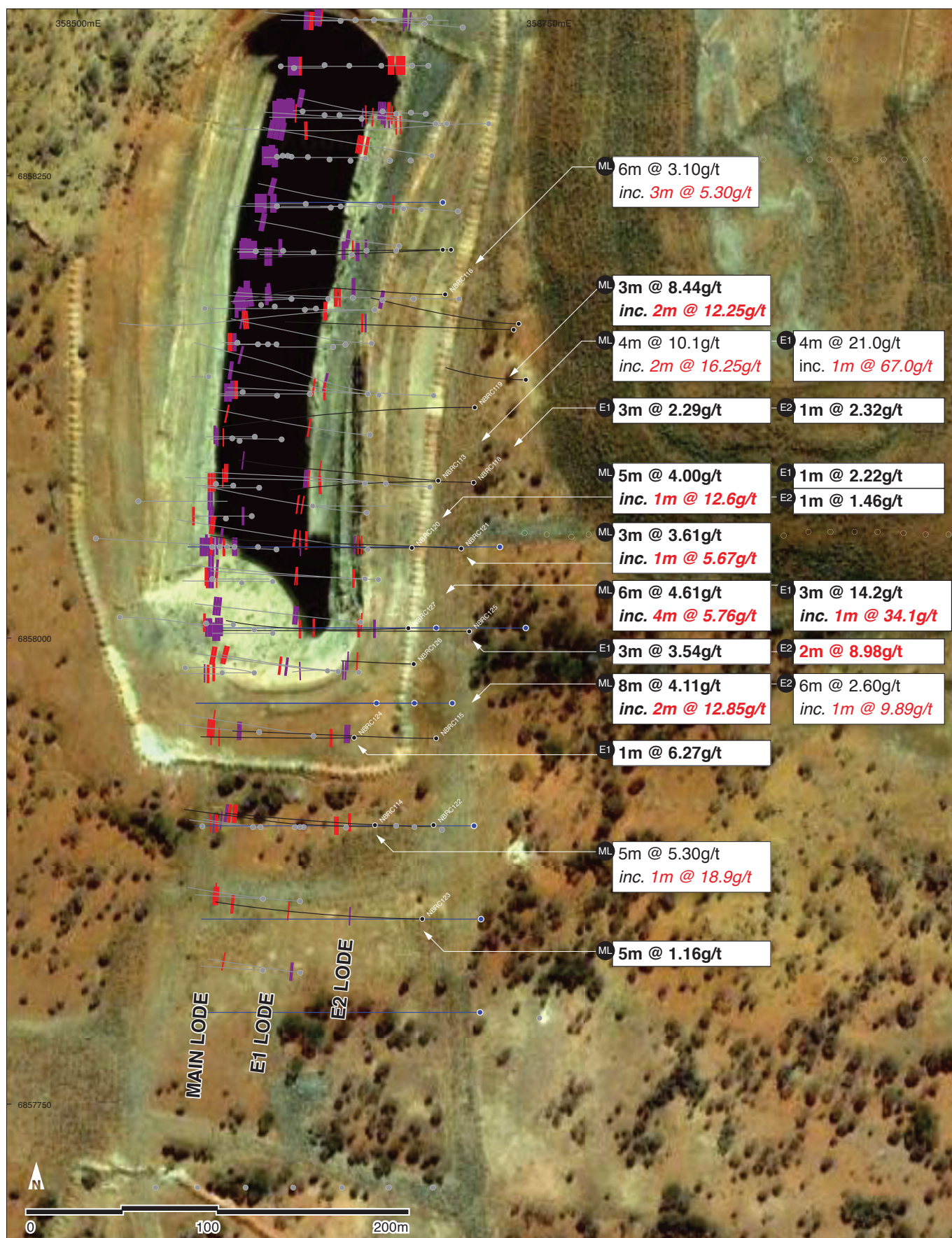
The recent program tested all three lodes, with high-grade mineralisation intersected in all of them. Significantly, the lodes remain open to the south and at depth. Drilling is scheduled to resume within days and will include both RC and diamond core.

The E2 lode results were a standout, returning multiple high-grade intervals including:

- 3m @ 14.2g/t Au** from 43m;
- 2m @ 8.98g/t Au** from 94m; and
- 4m @ 21.0g/t Au** from 64m (see ASX announcement 24 October 2017).

Preliminary geological interpretation of the Nambi system suggests a series of stacked, southerly plunging lodes associated with mylonitised, tightly folded sediment and volcanics.

Following on from the 5m composites, the single metre samples confirmed the high-grade nature of all three lodes. Occasional variability is apparent when comparing composite and single metre sample results, which may be attributed to the observed presence of particulate gold in RC drill samples, particularly with respect to the E2 lode. Further sampling, including screen fire assay, is to be undertaken to gain a better appreciation of the influence of coarse gold on assay repeatability.



### Nambi Deposit Drill Collar Location Plan

January 2018 GDA 94 Zone 51



#### Hole type

- 2017 Drill hole
- Historic Drill hole
- Planned

#### Intercepts

- 1 to 2.5g/t Au
- +2.5g/t Au

Minimum intersection width 2m

#### Drill results

- ML Main Lode
- E1 E1 Lode
- E2 E2 Lode

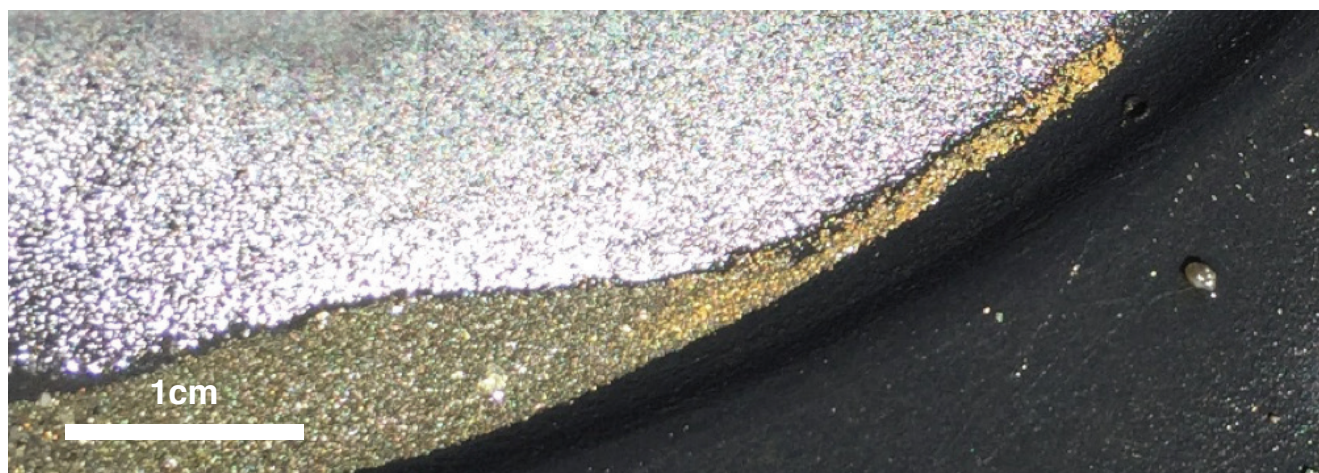


Table 1: Better Nambi Results from Recent Drilling – 1 metre samples

HOLE	FROM	TO	RESULT (g/t Au)	COMMENT
NBRC115*	251	259	8m @ 4.11	MAIN LODGE
Incl.	252	254	2m @ 12.85	
NBRC116*	83	85	2m @ 3.67	E1 LODGE
	187	193	6m @ 3.10	MAIN LODGE
Incl.	188	191	3m @ 5.30	
NBRC118	94	95	1m @ 2.32	E2 LODGE
	148	151	3m @ 2.29	E1 LODGE
NBRC119	131	133	2m @ 0.56	E1 LODGE
	238	241	3m @ 8.44	MAIN LODGE
Incl.	238	240	2m @ 12.25	
NBRC120	45	46	1m @ 2.22	E2 LODGE
	48	49	1m @ 1.40	
	50	51	1m @ 0.56	
	99	102	3m @ 1.46	E1 LODGE
	185	190	5m @ 4.00	MAIN LODGE
Incl.	189	190	1m @ 12.60	
NBRC121	83	85	2m @ 0.66	E2 LODGE
	135	139	4m @ 1.33	E1 LODGE
	141	143	2m @ 0.75	
	225	228	3m @ 3.61	MAIN LODGE
NBRC122	74	76	2m @ 2.47	E2 LODGE
	184	200	16m @ 1.02	MAIN LODGE
NBRC123	64	66	2m @ 1.92	E2 LODGE
	118	120	2m @ 1.00	E1 LODGE
	173	178	5m @ 1.16	MAIN LODGE
NBRC124	20	24	4m @ 1.33	E2 LODGE
	74	75	1m @ 6.27	E1 LODGE
	123	124	1m @ 1.21	MAIN LODGE
	130	132	2m @ 1.00	
NBRC125	84	86	2m @ 8.98	E2 LODGE
	145	148	3m @ 3.54	E1 LODGE
	245	251	6m @ 0.75	MAIN LODGE
NBRC126	51	52	1m @ 1.84	E2 LODGE
	59	60	1m @ 3.00	
NBRC127	43	46	3m @ 14.2	E2 LODGE
Incl.	43	44	1m @ 34.3	
	94	98	4m @ 1.95	E1 LODGE
	175	181	6m @ 4.61	MAIN LODGE
Incl.	176	180	4m @ 5.76	

Results calculated at +0.5 g/t Au, maximum of 2m of continuous internal dilution. NBRC115 & 116 – drilled in Sept programme, single metre results received during the quarter.





Gold 'tail' panned from E2 Lode, NBRC113 (1m @ 67g/t from 65 to 66m).



RC drilling Nambi Deposit, 2017.

## Golden Terrace South (GTS) Deposit

Single-metre assays were received for the RC drilling completed in late September. The results confirmed the high-grade nature of the southern zone including:

**14m @ 3.5 g/t Au** (*Incl. 4m @ 6.4 g/t Au*); and

**12m @ 2.65 g/t Au** (*Incl. 3m @ 5.9 g/t Au*).

Drilling down dip of the main oxide zone returned higher-grade intercepts within broad intervals of mineralisation. Better results included:

**1m @ 7.83 g/t Au** within **21m @ 1.70 g/t Au**.

December Quarter drilling successfully extended the mineralisation to a depth of more than 150m, with the southernmost hole, GTRC445, intersecting:

**15m @ 1.26g/t Au** from 121m;

**6m @ 1.10g/t Au** from 138m; and

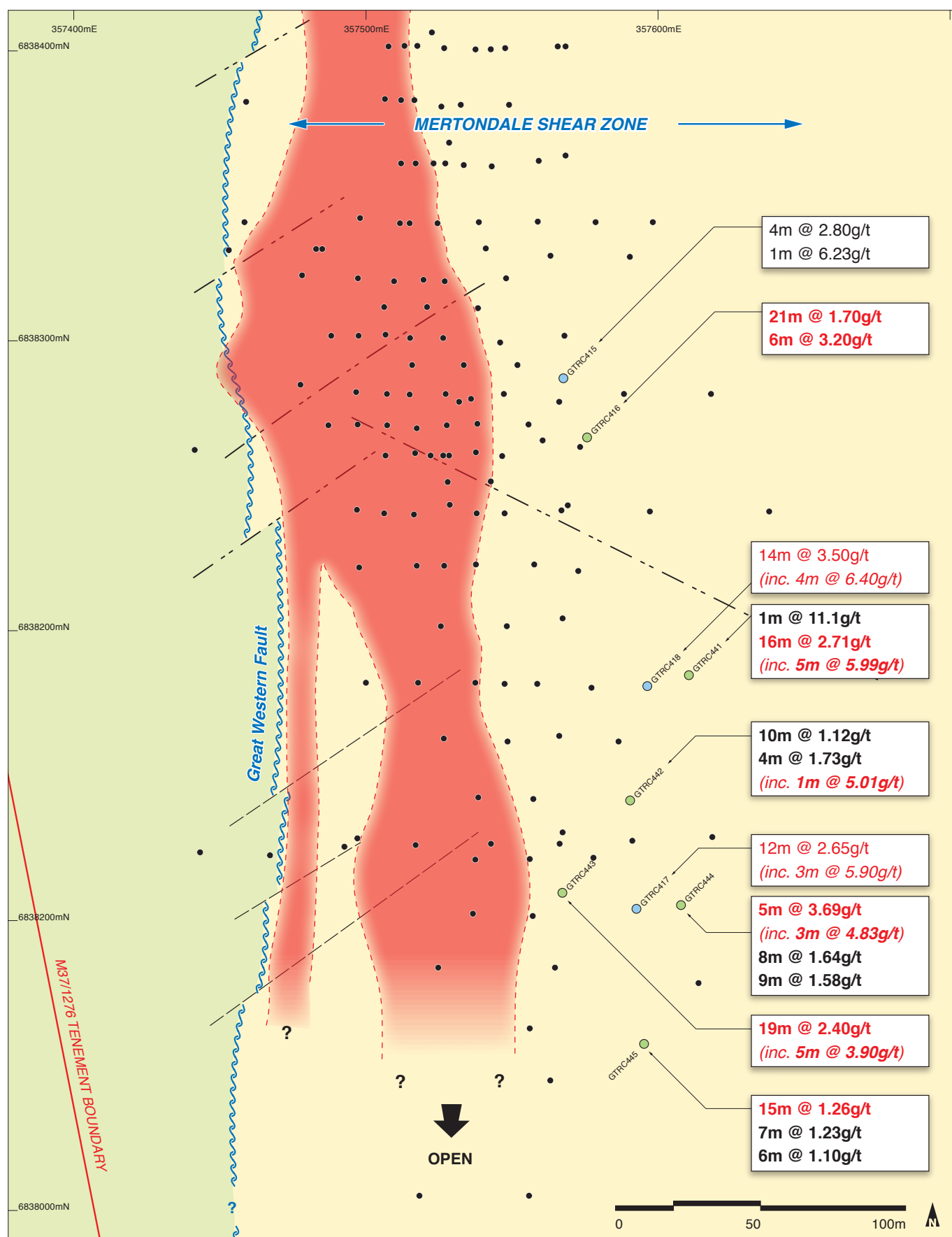
**7m @ 1.23g/t Au** from 164m.

Further encouraging results received during the Quarter were:

**16m @ 2.71g/t Au** (*Incl. 5m @ 5.99 g/t Au*) from 191m down hole in GTRC441; and

**19m @ 2.40g/t Au** (*Incl. 5m @ 3.90g/t Au*) from 138m down hole in GTRC443

(see ASX announcement 11 January 2017).



### GTS Deposit Drilling Plan

January 2018. GDA 94 Zone 51



Table 2: Better GTS Results from Recent Drilling – 1 metre samples

HOLE	FROM	TO	RESULT (g/t Au)
<b>GTRC415</b>	140	145	7m @ 1.35
	163	167	4m @ 2.80
	191	192	1m @ 6.23
<b>GTRC416</b>	166	187	<b>21m @ 1.35</b>
<i>Incl.</i>	174	175	1m @ 7.83
	206	210	<b>6m @ 3.20</b>
<b>GTRC417</b>	167	179	<b>12m @ 2.65</b>
<i>Incl.</i>	176	179	<b>3m @ 5.90</b>
<b>GTRC418</b>	170	171	1m @ 3.25
	177	193	<b>14m @ 3.50</b>
<i>Incl.</i>	181	185	<b>4m @ 6.40</b>
	222	226	4m @ 1.03
<b>GTRC441</b>	174	175	<b>1m @ 11.10</b>
	191	207	<b>16m @ 2.71</b>
<i>Incl.</i>	195	200	<b>5m @ 5.99</b>
<b>GTRC442</b>	115	119	4m @ 1.73
<i>Incl.</i>	118	119	1m @ 5.01
	123	137	14m @ 0.86
	143	153	10m @ 1.12
	190	192	2m @ 1.63
	196	199	3m @ 1.20
<b>GTRC443</b>	109	114	5m @ 1.21
	138	157	<b>19m @ 2.40</b>
<i>Incl.</i>	143	148	<b>5m @ 3.90</b>
<b>GTRC444</b>	158	166	9m @ 1.58
	188	196	8m @ 1.64
<i>Incl.</i>	192	193	1m @ 4.92
	241	246	<b>5m @ 3.39</b>
<i>Incl.</i>	242	245	<b>3m @ 4.83</b>
<b>GTRC445</b>	121	136	<b>15m @ 1.26</b>
	138	144	6m @ 1.10
	164	171	7m @ 1.23

Results calculated at +0.5 g/t Au, maximum of 2m of continuous internal dilution. GTRC416-418 – Drilled Sept 2017, single metre assay results received during the quarter

Gold mineralisation at GTS is hosted within a steeply dipping folded package of intermediate to felsic volcanics/tuff, black shales (graphitic in part), shale, siltstone and mafic schists. A strong shear fabric is apparent with mineralisation intimately associated with quartz veining/silicification and disseminated sulphides.

The deposit is also deeply weathered in parts, with intense weathering observed to more than 100m downhole.



## Bindy & Kt-1 Prospects

In late September, a wide-spaced, first-pass RC program was completed as a follow-up to the previous aircore drilling campaign at the Bindy and KT-1 prospects. Single-metre assays were received from the RC drilling during the December Quarter.

The results from this initial, wide-spaced RC drilling at the newly discovered Bindy Prospect returned high-grade intervals within a coherent, broad zone of mineralisation over about 800m of strike. Notable intercepts included:

**7m @ 5.17 g/t Au (Incl. 3m @ 10.78 g/t Au);**  
**9m @ 2.25 g/t Au (Incl. 3m @ 4.40 g/t Au);**  
**9m @ 2.25 g/t Au (Incl. 3m @ 4.40 g/t Au); and**  
**4m @ 3.70 g/t Au (Incl. 2m @ 6.42 g/t Au).**

NTM completed follow-up RC drilling in the December Quarter. This drilling returned a number of encouraging 5m composite results at both Bindy and KT-1, with broad intervals of mineralisation intersected. Significantly, mineralisation remains open along strike and at depth.

The drilling at Bindy continued to demonstrate a large system over significant strike length. The mineralisation is located along the Great Western Fault, in a similar geological setting GTS.

Recent better 5m composite results include:

**30m @ 1.92g/t Au (Incl. 20m @ 2.50 g/t Au);**  
**5m @ 2.73 g/t Au; and**  
**5m @ 2.20 g/t Au.**

Current drill traverse spacing at Bindy is relatively coarse at 100m, with the mineralised zone at Bindy stretching to more than 800m of strike to date.

Further RC drilling is planned for Bindy as part of the upcoming program. Single metre samples results are expected over coming weeks.

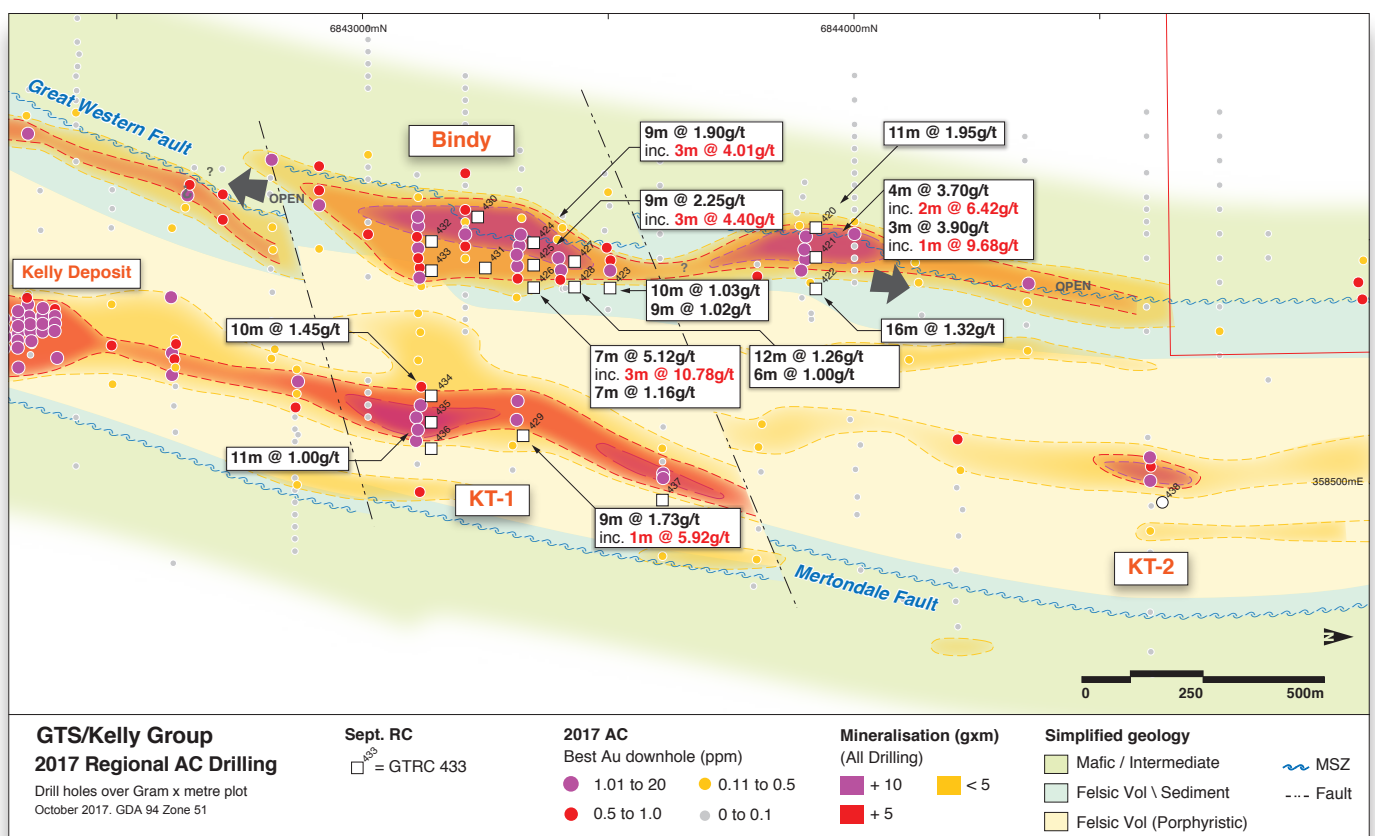


Table 3: Better Bindy &amp; KT-1 Results from Recent Drilling

HOLE	FROM	TO	RESULT (+0.5g/t Au)
GTRC422	100	116	16m @ 1.32
GTRC423	69	79	10m @ 1.03
	107	108	5m @ 1.03
	123	132	9m @ 1.02
GTRC424	29	30	1m @ 2.75
	53	54	1m @ 3.73
	63	72	9m @ 1.90
	66	69	3m @ 4.01
GTRC425	101	107	6m @ 0.73
	114	123	9m @ 2.25
	117	121	3m @ 4.40
GTRC426	132	139	7m @ 1.16
	158	165	7m @ 5.12
	162	165	3m @ 10.78
	189	190	1m @ 2.03
GTRC427	62	66	4m @ 1.26
GTRC428	85	88	3m @ 1.92
	104	110	6m @ 1.00
	114	126	12m @ 1.26
GTRC429	67	76	9m @ 1.73
	72	73	1m @ 5.92
	140	145	5m @ 1.34
GTRC433	118	119	1m @ 2.90
	159	168	9m @ 0.75
GTRC434	58	68	10m @ 1.45
GTRC435	67	71	4m @ 0.80
	75	86	11m @ 1.00
	93	96	3m @ 1.12
GTRC436	75	76	1m @ 2.40
GTRC438	102	103	1m @ 5.70
GTRC439	75	76	1m @ 2.04
GTRC440	134	140	6m @ 1.14
GTRC446	175	190	15m @ 1.00
GTRC447	155	185	30m @ 1.92
<i>Incl.</i>	165	185	20m @ 2.50
GTRC448	95	100	5m @ 2.20
	135	145	10m @ 1.20
GTRC449	155	165	10m @ 1.36
	185	190	5m @ 2.73
GTRC454	85	115	30m @ 1.00
<i>Incl.</i>	90	95	5m @ 2.75

BINDY/ KT-1 Preliminary 5m composite samples. Calculated at +0.1g/t, with maximum 2 sample continuous dilution. \*= EOH. All holes drilled -60/270°. GTRC420-440 drilling Sept 2017 – single metre assay results received during quarter.

## Resource Update

All drilling data has been provided to independent consultants who have commenced work on an updated resource estimate for both Nambi and GTS, together with a review of other deposits within the Redcliffe Gold Project.

The independent consultants may also provide guidance on the current drilling program to deliver the best outcome for a pending resource update, due by mid-2018.

## Nambi East Acquisition

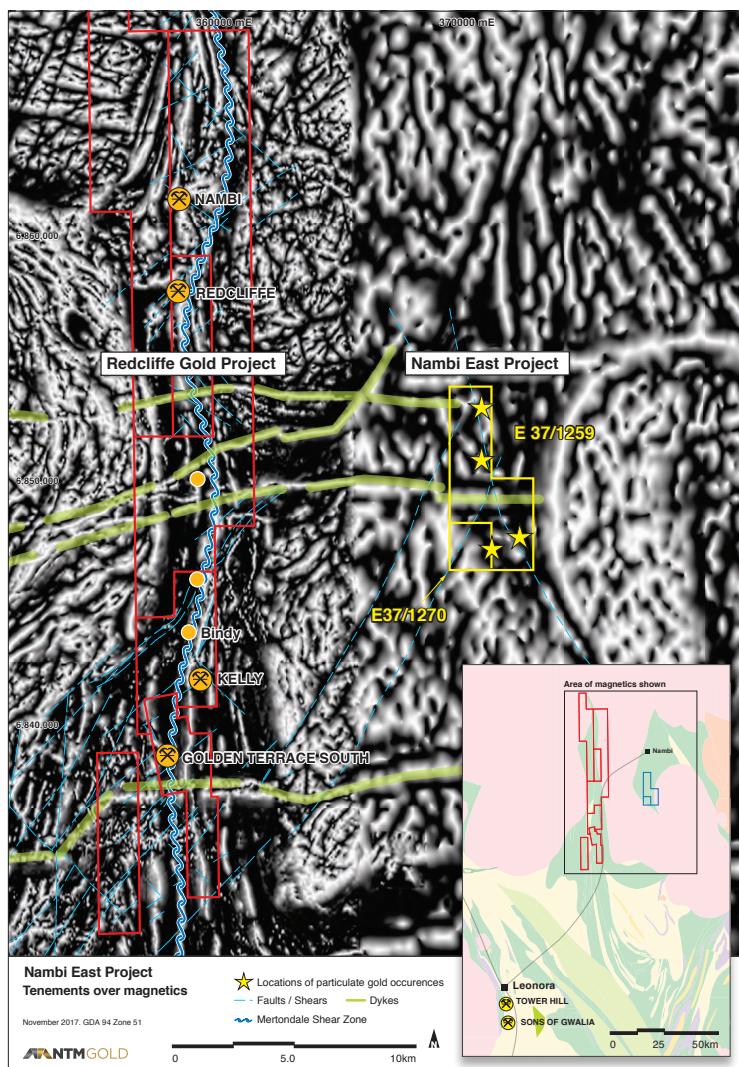
The Company entered into an agreement to acquire two Exploration Licences located 12km east of the Redcliffe Gold Project. The Exploration Licences (ELs) have been acquired from a local prospector and cover 18km<sup>2</sup>. The new project has been named Nambi East.

A number of nuggets and gold-encrusted specimen stones to 5 ounces (5-6cm long) have recently been discovered by local prospectors at Nambi East, supporting the Company's interpretation that the area is highly prospective for gold mineralisation.

The cost of the acquisition was \$20,000 in reimbursements and \$100,000 in NTM shares.



Examples of gold-mineralised specimens located within the Nambi East project area. Largest specimen yielded approximately 5 oz.



## CORPORATE

Two major activities were completed subsequent to the end of the Quarter: a capital raising and the appointment of two new directors.

### Capital Raising

As announced to the ASX on 15 January 2018, the Company raised \$1.5 million in a heavily oversubscribed placement of new shares, priced at 5¢ per share. The funds will be used to accelerate drilling at Redcliffe.

As at the end of the Quarter (and before the capital raising), the Company had \$0.95m in cash and no debt.

### Director Appointments

As announced on 11 January 2018, Andrew Muir was appointed Managing Director of the Company, with immediate effect. NTM substantial shareholder Edward (Ted) van Heemst joined the board as a Non-Executive Director. In conjunction with these appointments, NTM CEO Rodney Foster is transitioning to the role of Non-Executive (Technical) Director.



## LOOKING FORWARD

The capital raising completed subsequent to the end of the Quarter will allow a continuation of the Company's aggressive exploration campaign well into 2018.

The next drilling program is due to commence within days and will consist of both RC and diamond drilling. The program is designed to target extensions of the mineralised zones at both Nambi and GTS. Drilling will also be undertaken at Bindy to in-fill the coarse line spacing of the original program. Significantly, all mineralised zones remain open at depth and along strike.

For further enquiries:

**Andrew Muir**

Managing Director

Telephone: (08) 9481 6666

Email: amuir@ntmgold.com.au

**Peter Klinger**

Cannings Purple

Telephone: 0411 251 540

pklinger@canningspurple.com.au

**Competent Person Statement**

The information in this report, as it relates to Exploration Results, is based on information compiled and/or reviewed by Rodney Foster who is a Member of The Australasian Institute of Mining and Metallurgy. Rodney Foster is a Director of the Company. He has sufficient experience which is relevant to the style of mineralisation and type of deposit under consideration and to the activity which he is undertaking to qualify as a Competent Person as defined in the 2012 Edition of the "Australasian Code for Reporting of Exploration Results, Mineral Resources and Ore Reserves". Rodney Foster consents to the inclusion in the report of the matters based on his information in the form and context in which it appears. The information with respect to Resources was prepared and first disclosed under the JORC 2004 code. It has not been updated since to comply with the JORC 2012 code on the basis that the information has not materially changed since it was last reported.

**Table 4: NTM GOLD LTD - Tenement Status – Dec 2017**

Project/Tenement Held	Location	Tenement Number	Economic Entity's Interest at Quarters End	Change in Economic Entity's Interest during Quarter
Redcliffe Gold Project	Western Australia	M37/1276	100%	No Change
Redcliffe Gold Project	Western Australia	M37/1285	100%	No Change
Redcliffe Gold Project	Western Australia	M37/1286	100%	No Change
Redcliffe Gold Project	Western Australia	M37/1295	100%	No Change
Redcliffe Gold Project	Western Australia	E37/1205	100%	No Change
Redcliffe Gold Project	Western Australia	P37/7648	100%	No Change
Redcliffe Gold Project	Western Australia	E37/1288	100%	Granted
Redcliffe Gold Project	Western Australia	E37/1289	100%	Granted
Nambi East	Western Australia	E37/1259	100%	Acquisition
Nambi East	Western Australia	E37/1270	100%	Acquisition
Goose Well	Western Australia	P39/5593	100%	No Change
Goose Well	Western Australia	P39/5593	100%	No Change

Table 5: 2017 December Quarter Drill Hole Summary

HOLE	AREA	GDA_E	GDA_N	RL	DEPTH (M)
NBRC113	Nambi	358693	6858086	518	264
NBRC114	Nambi	358659	6857900	519	198
NBRC115	Nambi	358702	6857947	518	270
NBRC116	Nambi	358696	6858186	519	240
NBRC117	Nambi	358760	6858506	515	120
NBRC118	Nambi	358712	6858085	518	184
NBRC119	Nambi	358712	6858125	518	265
NBRC120	Nambi	358679	6858050	518	202
NBRC121	Nambi	358705	6858050	518	241
NBRC122	Nambi	358690	6857900	518	243
NBRC123	Nambi	358684	6857850	518	193
NBRC124	Nambi	358648	6857947	517	142
NBRC125	Nambi	358709	6858005	518	262
NBRC126	Nambi	358680	6857987	516	64
NBRC127	Nambi	358677	6858006	518	196
GTRC415	GTS	357569	6838288	483	222
GTRC416	GTS	357578	6838266	483	222
GTRC417	GTS	357597	6838101	484	250
GTRC418	GTS	357600	6838180	484	250
GTRC419	GTS	357451	6838673	484	126
GTRC420	Bindy	357896	6843958	514	144
GTRC421	Bindy	357938	6843952	514	162
GTRC422	Bindy	357966	6843956	514	204
GTRC423	Bindy	357995	6843558	508	150
GTRC424	Bindy	357901	6843366	508	102
GTRC425	Bindy	357919	6843368	508	138
GTRC426	Bindy	357967	6843363	508	204
GTRC427	Bindy	357929	6843455	508	120
GTRC428	Bindy	357974	6843453	508	162
GTRC429	KT-1	358272	6843363	508	180
GTRC430	Bindy	357937	6843260	510	132
GTRC431	Bindy	357967	6843262	510	180
GTRC432	Bindy	357908	6843163	508	126
GTRC433	Bindy	357922	6843166	508	180
GTRC434	KT-1	358251	6843167	508	138
GTRC435	KT-1	358273	6843161	508	162
GTRC436	KT-1	358325	6843164	508	204
GTRC437	KT-1	358400	6843665	512	166
GTRC438	KT-2	358386	6844666	504	178
GTRC439	Triple 2	358162	6845667	510	106
GTRC440	Triple 2	358191	6845653	510	160
GTRC441	GTS	357615	6838184	483	280
GTRC442	GTS	357594	6838139	483	232
GTRC443	GTS	357571	6838106	485	178
GTRC444	GTS	357613	6838102	484	274
GTRC445	GTS	357600	6838053	485	250
GTRC446	Bindy	358005	6843947	513	262
GTRC447	Bindy	358013	6843458	507	232
GTRC448	Bindy	357950	6843361	508	178
GTRC449	Bindy	357990	6843363	508	280
GTRC450	KT-1	358252	6843365	508	136
GTRC451	KT-1	358294	6843355	508	166
GTRC452	KT-1	358256	6843260	508	150
GTRC453	KT-1	358295	6843251	508	180
GTRC454	KT-1	357615	6838184	508	186

All holes drilled -55/270° at Nambi, GTS, Bindy & KT-1 -60/270°. NBRC126 was abandoned due to drilling issues.