



ASX ANNOUNCEMENT | 10 April 2018

FURTHER POSITIVE DRILL RESULTS IN THE SOUTHERN RIDGE DEPOSIT AREA

- *Infill drilling of the Southern Ridge Deposit area continues to deliver strong lithium intersections, including:*
 - **21m @ 2.19% Li₂O from 2m (P18RC0018)**
 - **43m @ 1.65% Li₂O from 21m (P18RC0029)**
 - **18m @ 1.40% Li₂O from 51m (P18RC0031)**
 - **27m @ 1.62% Li₂O from 90m (P18RC0034)**
- *The Southern Ridge Deposit has the potential to **increase the Ore Reserve and Mineral Resource estimate of the Altura Lithium Project***
- *Drilling program at Southern Ridge is now complete*

Altura Mining Limited (ASX: AJM) is pleased to provide an update on recent exploration within the Southern Ridge Deposit area, part of the flagship Altura Lithium Project.

The Southern Ridge Deposit had been earmarked for infill drilling due to its potential to increase the Ore Reserve and Mineral Resource estimate of the Altura Lithium Project, which is currently on track for first lithium concentrate sales in Q2 2018. The Southern Ridge Deposit area adjoins the main Pilgangoora deposit.

A total of 4,654m of RC drilling in 44 holes was completed. The results from holes P18RC0018-35 are presented in this announcement.

Altura Managing Director James Brown said: "This portion of our 2018 exploration program covering the Southern Ridge continues to deliver impressive results for depth, grade and thickness. The integration of these results should provide a good platform for the upcoming Stage 2 expansion study."

Altura Mining Limited ABN 39 093 391 774

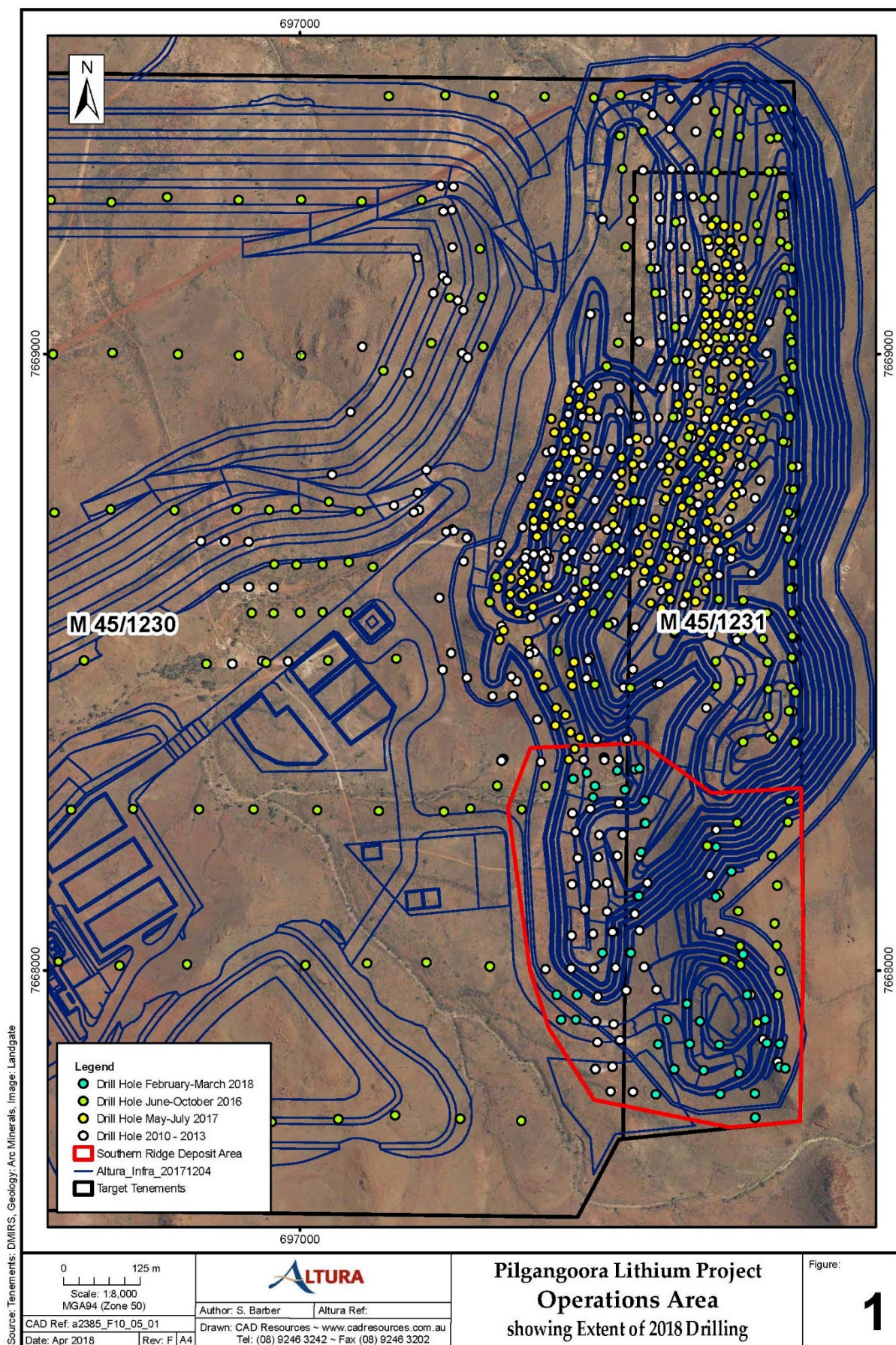
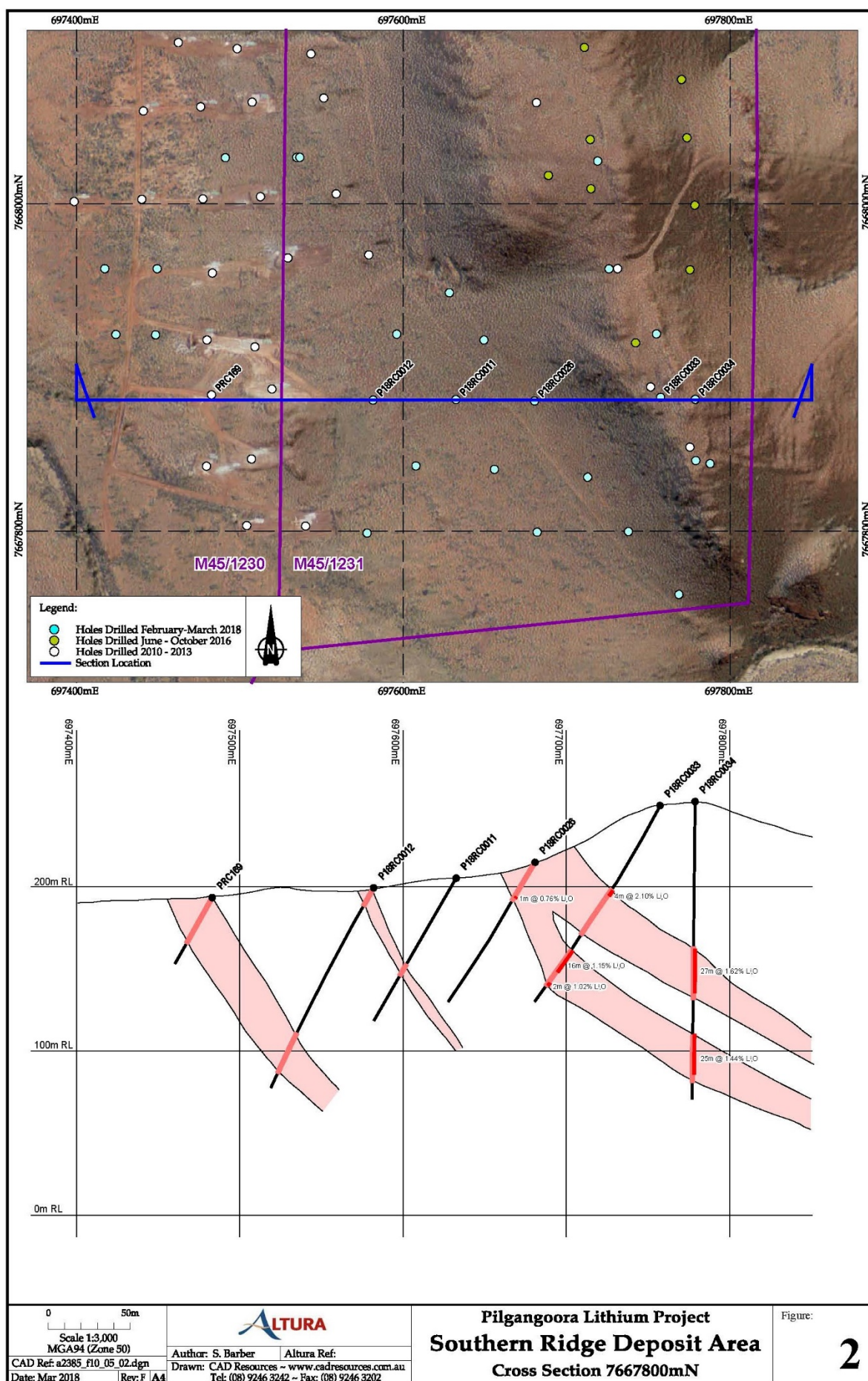


Table 1 – Summary of Significant Drill Hole Assay Results

Hole ID	Mineralised Intersections	
P18RC0018	21m @ 2.19% Li ₂ O from 2-23m	including 12m @ 2.65% Li ₂ O from 8m
	2m @ 1.37% Li ₂ O from 43-45m	
	7m @ 1.69% Li ₂ O from 51-58m	
P18RC0019	20m @ 1.29% Li ₂ O from 0-20m	including 10m @ 1.60% Li ₂ O from 1m
P18RC0021	7m @ 1.10% Li ₂ O from 15-22m	
	5m @ 1.29% Li ₂ O from 32-37m	
	2m @ 1.04% Li ₂ O from 57-59m	
	7m @ 0.92% Li ₂ O from 61-68m	including 3m @ 1.58% Li ₂ O from 65m
P18RC0022	4m @ 1.08% Li ₂ O from 25-29m	
P18RC0023	6m @ 1.24% Li ₂ O from 14-20m	
P18RC0024	22m @ 1.68% Li ₂ O from 12-34m	including 10m @ 1.76% Li ₂ O from 12m
P18RC0025	3m @ 1.34% Li ₂ O from 18-21m	
	16m @ 1.46% Li ₂ O from 28-44m	including 9m @ 2.00% Li ₂ O from 30m
P18RC0027	8m @ 1.65% Li ₂ O from 0-8m	
P18RC0028	3m @ 1.92% Li ₂ O from 3-6m	
	5m @ 1.45% Li ₂ O from 16-21m	
P18RC0029	43m @ 1.65% Li ₂ O from 21-64m	including 10m @ 2.13% Li ₂ O from 23m including 15m @ 2.14% Li ₂ O from 47m
P18RC0031	18m @ 1.40% Li ₂ O from 51-69m	including 5m @ 2.68% Li ₂ O from 51m
	6m @ 0.79% Li ₂ O from 77-83m	
	5m @ 1.03% Li ₂ O from 94-99m	
	6m @ 1.94% Li ₂ O from 113-119m	including 3m @ 3.48% Li ₂ O from 113m
P18RC0032	12m @ 1.55% Li ₂ O from 85-97m	including 4m @ 2.19% Li ₂ O from 85m
	16m @ 1.30% Li ₂ O from 101-117m	including 7m @ 1.83% Li ₂ O from 104m
P18RC0033	4m @ 2.10% Li ₂ O from 60-64m	
	16m @ 1.15% Li ₂ O from 104-120m	including 6m @ 1.48% Li ₂ O from 104m
	2m @ 1.02% Li ₂ O from 128-130m	
P18RC0034	27m @ 1.62% Li ₂ O from 90-117m	including 8m @ 2.24% Li ₂ O from 93m
	25m @ 1.44% Li ₂ O from 142-167m	including 15m @ 1.73% Li ₂ O from 143m
P18RC0035	7m @ 1.00% Li ₂ O from 131-138m	
	5m @ 0.79% Li ₂ O from 139-144m	
	23m @ 1.14% Li ₂ O from 148-171m	including 5m @ 1.61% Li ₂ O from 150m

Note: Please refer to the Appendix for the full details of the drill hole results.





Drilling on the western side of the Southern Ridge

Competent Person Statement

The information in this report that relates to the Exploration Targets and Exploration Results is based on information compiled by Mr Stephen Barber. Mr Barber is a Member of the Australasian Institute of Mining and Metallurgy. Mr Barber is the Senior Resource Geologist at Altura Mining Limited and has sufficient experience that is relevant to the style of mineralisation under consideration and to the activity being undertaken to qualify as a Competent Person as defined in the 2012 Edition of the Australasian Code for Reporting of Exploration Results, Mineral Resources and Ore Reserves. Mr Barber consents to the inclusion in the report of the matters based on this information in the form and context in which it appears.

About Altura Mining Limited (ASX: AJM)

Altura is building a leading position in the independent supply of lithium raw materials, with a world-class Altura Lithium Project at Pilgangoora to become Australia's next major hard rock lithium product supplier in 2018. Altura has an experienced in-house team focussed on delivering the Altura Lithium Project into production. The project is the most advanced stage, near-term producing lithium project; coupled with solid offtake partners and a market providing substantial growth opportunities to ensure positive shareholder returns.

For further information, please visit www.alturamining.com or phone:

Company:

James Brown, Managing Director +61 (0)427 988 898
Paul Mantell, Executive Director +61 (0)418 727 460

Media:

Michael Weir / Cameron Gilenko
Citadel- MAGNUS
+61 8 6160 4900

APPENDIX
Exploration Drill Hole Results
Southern Ridge Deposit Area

Hole ID	Hole Type	Easting GDA94	Northing GDA94	RL	Dip	MGA Azi	Hole Depth	Depth From	Interval Length	Li ₂ O%	Comments
P18RC0018	RC	697515.13	7668323.97	192.80	-60	270	80	2	21	2.19	Including 12m @ 2.65% Li ₂ O from 8m
								43	2	1.37	
								51	7	1.69	
P18RC0019	RC	697465.94	7668320.49	192.12	-60	270	37	0	20	1.29	Including 10m @ 1.60% Li ₂ O from 1m
								28	1	1.49	
P18RC0020	RC	697443.81	7668310.55	190.86	-60	270	28	-	-	-	No significant results
P18RC0021	RC	697527.61	7668293.15	192.48	-60	270	80	7	3	0.80	Including 3m @ 1.58% Li ₂ O from 65m
								15	7	1.10	
								32	5	1.29	
								57	2	1.04	
P18RC0024	RC	697478.79	7668298.82	189.25	-60	270	50	5	2	0.74	Including 10m @ 1.76% Li ₂ O from 12m Including 6m @ 2.40% Li ₂ O from 27m
								12	22	1.68	
P18RC0025	RC	697544.11	7668325.60	192.10	-60	270	103	18	3	1.34	Including 9m @ 2.00% Li ₂ O from 30m
								28	16	1.46	
								53	3	0.76	
P18RC0026	RC	697680.31	7667879.41	214.98	-60	270	100	24	1	0.76	
P18RC0027	RC	697712.85	7667832.79	215.70	-60	270	85	0	8	1.65	
P18RC0028	RC	697737.73	7667799.57	215.21	-60	270	100	3	3	1.92	
								16	5	1.45	
								25	2	0.91	
P18RC0029	RC	697551.34	7668327.36	191.68	-90	0	100	21	43	1.65	Including 10m @ 2.13% Li ₂ O from 23m Including 15m @ 2.14% Li ₂ O from 47m
P18RC0030	RC	697424.18	7667920.06	192.12	-60	270	45	-	-	-	No significant results
P18RC0031	RC	697778.97	7667842.96	248.13	-60	270	133	51	18	1.40	Including 5m @ 2.68% Li ₂ O from 51m Including 3m @ 3.48% Li ₂ O from 113m
								77	6	0.79	
								94	5	1.03	
								113	6	1.94	
P18RC0032	RC	697787.73	7667841.09	247.76	-90	0	131	85	12	1.55	Including 4m @ 2.19% Li ₂ O from 85m Including 7m @ 1.83% Li ₂ O from 104m
								101	16	1.30	
P18RC0033	RC	697757.48	7667881.63	249.52	-60	270	142	60	4	2.10	Including 6m @ 1.48% Li ₂ O from 104m
								104	16	1.15	

								128	2	1.02	Including 3m @ 1.87% Li ₂ O from 115m
P18RC0034	RC	697778.64	7667880.42	250.16	-90	0	179	90	27	1.62	Including 8m @ 2.24% Li ₂ O from 93m
								142	25	1.44	Including 7m @ 1.87% Li ₂ O from 103m
											Including 15m @ 1.73% Li ₂ O from 143m
P18RC0035	RC	697754.94	7667920.40	249.76	-90	0	179	94	2	0.82	Including 5m @ 1.61% Li ₂ O from 150m
								131	7	1.00	
								139	5	0.79	
								148	23	1.14	

JORC CODE, 2012 EDITION - TABLE 1

Section 1 Sampling Techniques and Data

(Criteria in this section apply to all succeeding sections.)

Criteria	JORC Code explanation	Commentary
Sampling techniques	<ul style="list-style-type: none"> Nature and quality of sampling (e.g. cut channels, random chips, or specific specialised industry standard measurement tools appropriate to the minerals under investigation, such as down hole gamma sondes, or handheld XRF instruments, etc). These examples should not be taken as limiting the broad meaning of sampling. Include reference to measures taken to ensure sample representivity and the appropriate calibration of any measurement tools or systems used. Aspects of the determination of mineralisation that are Material to the Public Report. In cases where 'industry standard' work has been done this would be relatively simple (e.g. 'reverse circulation drilling was used to obtain 1 m samples from which 3 kg was pulverised to produce a 30 g charge for fire assay'). In other cases more explanation may be required, such as where there is coarse gold that has inherent sampling problems. Unusual commodities or mineralisation types (e.g. submarine nodules) may warrant disclosure of detailed information. 	<ul style="list-style-type: none"> The Pilgangoora deposit was sampled by collecting outcrop rock chips; samples were also collected from reverse circulation or RC (chip) and diamond drilling or DD (core). Drilling for assay samples was undertaken on a regular spaced grid (average 40m x 40m) and an infill grid in places (average 20m x 20m). All potential ore intervals and their contacts into barren wall rock were sampled. RC drill hole samples were collected in one metre (1m) intervals from the beginning to end of each hole. Each 1m sample was split directly using a rig-mounted riffle splitter and then collected into a uniquely numbered calico bag. The remaining material for each 1m interval was collected directly off the cyclone into a numbered plastic bag and kept near the drill site for geological logging. DD used a HQ diameter triple tube core barrel; the core was removed from the tube and then transferred to 4x1m HQ core trays. The core was marked up and logged in the core trays. Sample lengths were determined by the geologist, based upon the nature and location of the mineralisation logged in the core. Half core sample cut from mineralised zones was sent for assay analysis. Mineralisation was initially determined visually and confirmed by geological logging and geochemical assaying.
Drilling techniques	<ul style="list-style-type: none"> Drill type (e.g. core, reverse circulation, open-hole hammer, rotary air blast, auger, Bangka, sonic, etc) and details (e.g. core diameter, triple or standard tube, depth of diamond tails, face-sampling bit or other type, whether core is oriented and if so, by what method, etc). 	<ul style="list-style-type: none"> Drilling from 2010-13, included both RC (chip) and DD (core). This work was undertaken using Altura Mining's PRD2000 multipurpose rig rated at 1120 cfm @ 350psi. The RC drilling used a 5.2" (132mm) face sampling hammer, the diamond drilling used HQ (63.5mm internal) coring. The RC holes were sampled from the surface. DD holes were pre-collared to 3m and then coring commenced. No core orientation was undertaken. In April 2016, DD was carried out by DDH1, who supplied a Sandvik UDR 1200 (PQ3 size core; 85mm core diameter) truck mounted rig. No core orientation was undertaken. In June to October 2016, RC drilling was undertaken with four RC drill rigs. Strike Drilling supplied a truck mounted rig SD02/ KWL700 (143mm hammer bit). Mt Magnet Drilling (MMD) supplied a RC450 Hydco track mounted rig (146mm hammer bit); MMD DR24/UDR259 track mounted rig (140mm hammer bit); and MMD MP1300 multipurpose truck mounted rig (146mm hammer bit). When required all the RC rigs utilised auxiliary compressors for additional air pressure. In May to July 2017, RC drilling was undertaken using two RC drill rigs. Mt Magnet Drilling (MMD) supplied a RC450 Hydco track mounted rig (146mm hammer bit); and MMD MP1300 multipurpose truck mounted rig (146mm hammer bit). When required the RC rigs utilised auxiliary compressors for additional air pressure. In February to March 2018, RC drilling was

Criteria	JORC Code explanation	Commentary
		undertaken using a RC drill rig. Mt Magnet Drilling (MMD) supplied a RC450 Hydco track mounted rig (146mm hammer bit). When required the RC rig utilised an auxiliary booster compressor for additional air pressure.
Drill sample recovery	<ul style="list-style-type: none"> Method of recording and assessing core and chip sample recoveries and results assessed. Measures taken to maximise sample recovery and ensure representative nature of the samples. Whether a relationship exists between sample recovery and grade and whether sample bias may have occurred due to preferential loss/gain of fine/coarse material. 	<ul style="list-style-type: none"> No direct recovery measurements of RC samples were performed. Sample recovery at the rig is visually estimated and recorded for loss per sample interval. Representative drill chips for each 2m interval were collected by the Rig Geologist during logging carried out from 2010-16. Representative drill chips for each 1m interval were collected by the Rig Geologist during the 2017-18 logging. RC sample recovery was maximised by stopping drilling at the metre interval and air-flushing the cyclone contents through the splitter to maximise recovery. HQ core was recovered in nominal 3m drill runs (or intervals) and marked by the drillers core block. The core was later marked by the Rig Geologist in 1m intervals and the drill core recovery was measured. Diamond drilling was targeted at maximum core recovery of greater than or equal to 95%. The assay results of duplicate RC and twinned diamond drill hole samples do not show a sample bias which may have been caused by the preferential loss/gain of fine/coarse material within the mineralised pegmatites.
Logging	<ul style="list-style-type: none"> Whether core and chip samples have been geologically and geotechnically logged to a level of detail to support appropriate Mineral Resource estimation, mining studies and metallurgical studies. Whether logging is qualitative or quantitative in nature. Core (or costean, channel, etc) photography. The total length and percentage of the relevant intersections logged. 	<ul style="list-style-type: none"> All RC and DD holes were logged by Rig Geologists. Representative drill chips for each 1m or 2m interval in the RC holes were collected by the Rig Geologist. The drill chips from these intervals were dry and wet sieved and then lithologically logged. The RC logging undertaken on the 1m or 2m intervals documented the lithology, colour, texture, alteration and mineralisation of each interval using Altura Mining's standardised logging codes. A representative sample for each 1m (2017-18) or 2m (2010-16) interval was placed in chip trays for future reference. The DD logging undertaken on the core intervals documented the lithology, colour, texture, alteration and mineralisation of each interval using Altura Mining's standardised logging codes. Geological contacts (or boundaries) were accurately logged. A representative sample was placed in core trays for future reference. All DD holes were measured for rock-quality designation or RQD and structural data (for example, joints, faults/fractures and natural breaks) was measured and logged. The RC and DD logging was considered quantitative in nature. All of the chip and core trays were photographed (full length of each hole) for future reference purposes. All recovered RC and DD intersections were logged.
Sub-sampling techniques and sample preparation	<ul style="list-style-type: none"> If core, whether cut or sawn and whether quarter, half or all core taken. If non-core, whether riffled, tube sampled, rotary split, etc and whether sampled wet or dry. 	<ul style="list-style-type: none"> RC samples were normally dry. If water was present, it was expelled (if possible) from the hole before sample was collected. RC samples for 1m intervals were split using a riffle splitter mounted on each RC rig to provide

Criteria	JORC Code explanation	Commentary
	<ul style="list-style-type: none"> For all sample types, the nature, quality and appropriateness of the sample preparation technique. Quality control procedures adopted for all sub-sampling stages to maximise representivity of samples. Measures taken to ensure that the sampling is representative of the in situ material collected, including for instance results for field duplicate/second-half sampling. Whether sample sizes are appropriate to the grain size of the material being sampled. 	<ul style="list-style-type: none"> a 1/8th sample. The split samples were stored in numbered calico sample bags. The sample numbers used in each drill hole were recorded by the Rig Geologist. Diamond core was ½ or ¼ cut (for check sampling and metallurgical purposes) with sampling from the same side where possible. Sample preparation for both RC chips and DD core, required that the whole sample was crushed to 2mm, then rotary divided and a 500g (approximate) sample was pulverised to -75 microns. A 0.2g split was then sent directly to a microwave-assisted dissolution. HF acid MAD's are performed in sealed vessels at temperatures up to 200°C and pressures up to 20 Bar. Digests were controlled with respect to microwave power, vessel temperature and vessel pressure to achieve reproducible digestion conditions across a wide range of sample materials. Samples collected in 2017 were sorted, weighed, dried and pulverised to nominal 90% <75µm using Labtech Essa LM5 pulveriser. Samples in 2018 were sorted, weighed, dried and pulverised using a routine 5-minute grind time to deliver Intertek's required quality specification of P85 75µm. Random duplicate samples for analyses were taken from most of the pegmatite intersections. The range between the original and duplicate sample data was on average 10-15%. Each laboratory also inserted its own check samples in each assay batch. The drill sample sizes were considered appropriate to represent the spodumene mineralisation, based on the average size of spodumene crystals (up to 50cm) and the thickness and overall consistency of mineralisation within the pegmatite hosts.
Quality of assay data and laboratory tests	<ul style="list-style-type: none"> The nature, quality and appropriateness of the assaying and laboratory procedures used and whether the technique is considered partial or total. For geophysical tools, spectrometers, handheld XRF instruments, etc, the parameters used in determining the analysis including instrument make and model, reading times, calibrations factors applied and their derivation, etc. Nature of quality control procedures adopted (e.g. standards, blanks, duplicates, external laboratory checks) and whether acceptable levels of accuracy (i.e. lack of bias) and precision have been established. 	<ul style="list-style-type: none"> Initial samples up until June 2011 were dispatched to Ultra Trace Laboratories in Perth. All subsequent sample submissions up to October 2016 were sent to LabWest in Perth. Both laboratories are NATA (National Association of Testing Authorities, Australia) certified. Li (ppm), Al₂O₃%, CaO%, Fe₂O₃%, K₂O%, MgO%, MnO%, Na₂O%, P₂O₅%, SO₃% and TiO₂% were assayed using microwave assisted HF acid digest with an ICP-OES finish, while Be (ppm), Cs (ppm), Nb (ppm), Rb (ppm), Sn (ppm), Ta (ppm), Th (ppm) U (ppm) and W (ppm) were digested with an ICP-MS finish. This technique is considered an effective for whole rock determination. The Certified Reference Materials (CRM) rate used by LabWest was 2 in every 24 samples and 7 CRM's (2 lithium ores, 1 rock, 1 soil, 3 pegmatites) were used. Internal lab splits (post-crushing) were done on 1 in 40 samples and pulp repeats were inserted at the rate of 1 in 24 samples. LabWest randomly inserted in-house standards to check their internal QC sampling. Random, blind re-submission of pulps from LabWest to an external lab (Ultra Trace) for check assaying was carried out. In 2017, the samples were submitted to SGS Australia's Laboratory in Perth. This lab is NATA certified encompassing ISO17025.

Criteria	JORC Code explanation	Commentary
		<ul style="list-style-type: none"> Two analyses methods were used by SGS. The first method used by SGS was the determination of elements by Sodium Peroxide Fusion with ICP finish. Each sample was fused with sodium peroxide in a zirconium crucible and the melt was leached with hydrochloric acid and made to volume. The solution from the digest was presented to an ICP-OES for the quantification of Li (ppm) and Fe (ppm). The second method used by SGS was the determination of Elements by Borate Fusion with XRF finish. Each sample was fused in a platinum crucible using lithium metaborate / tetraborate flux and the resultant glass bead was irradiated with X-Rays and the elements of interest were quantified. These elements were Al (ppm), Ca (ppm), Fe (ppm), K (ppm), Mn (ppm), Na (ppm), P (ppm), Si (ppm) and Ti (ppm). SGS used the following QC protocol: Blanks 1:50 (Reagent blank); Standards (CRM) 2:50; Repeats 1:50 (re-weigh from original assay packet); Duplicates 5% (sub-sampled at preparation stage from fine reject and analysed together at end of batch). SGS used 9 CRM's. In 2018, the samples were submitted to Intertek Genalysis Laboratory in Perth which is ISO17025 accredited. The method used by Intertek was the determination of elements by Sodium Peroxide Fusion with ICP finish. Each sample was fused with sodium peroxide in a zirconium crucible and the melt was leached with hydrochloric acid and made to volume. The solution from the digest was presented to an ICP-OES for the quantification of Al (%), Ca (%), Fe (%), K (%), Li (%), Mn (%), Si (%) and Ti (%); Rb (%) was reported using a MS finish. The quality control protocols employed by Intertek made use of control blanks (reagent blanks), checks (pulp duplicates) and reference materials which may be certified reference materials. Normally blanks were employed in at least 1% of the samples and checks and reference materials about 4% of the samples. Intertek used 7 CRM's. Field duplicates were randomly inserted by the drilling offside when mineralised pegmatites were intersected. The position of each duplicate sample was logged by the Rig Geologist. The general practice was to include a duplicate sample in every intersected pegmatite. The duplicate samples were submitted along with the remaining chip samples. During the 2017 and 2018 drill programs, the Rig Geologist also added a blank (industrial sand) and CRM standard in addition to the duplicate samples collected in the field. In August 2017, Altura requested an external laboratory check of samples pulps stored by SGS and a set of CRM standards. This work was carried out by Intertek Genalysis which is ISO17025 accredited. The analyses methods used by Intertek were identical to those used by SGS. The quality control protocols employed by Intertek made use of control blanks (reagent blanks), checks (pulp duplicates) and reference materials which may be certified reference materials. Normally blanks were employed in at

Criteria	JORC Code explanation	Commentary
		<p>least 1% of the samples and checks and reference materials about 4% of the samples.</p> <ul style="list-style-type: none"> • Intertek used 7 CRM's. • The QC samples used by Altura plus laboratory splits and internal standards have indicated the assaying shows acceptable levels of accuracy and precision. • No geophysical tools, spectrometers or hand-held XRF instruments were used in determining any of the assay data included in this resource.
Verification of sampling and assaying	<ul style="list-style-type: none"> • The verification of significant intersections by either independent or alternative company personnel. • The use of twinned holes. • Documentation of primary data, data entry procedures, data verification, data storage (physical and electronic) protocols. • Discuss any adjustment to assay data. 	<ul style="list-style-type: none"> • Drill hole geological and geotechnical logging was undertaken on site by qualified Rig Geologists during the various drill programs in 2010-13 and 2016-18. • All completed RC and DD holes were logged. • A complete dataset of lithology logs plus photos of the chip trays and the diamond core have been examined and confirm the observed pegmatite mineralisation intervals correspond with the assay data. • A large selection of the RC chips and DD core was also viewed on site at Pilgangoora. • Some significant intersections from the 2010-13 RC programs were twinned by a nine hole DD program in April 2016 to confirm the thickness of the pegmatite intersections. This information was used as a check in the November-December 2016 resource estimation work. • Assay data was provided by the various laboratories as certified data files. • All survey, lithology and assay data was input to Excel spreadsheets that were exported to Datashed. Data validation and cross-checking was conducted using manual checks and an automated verification function. • Lithium assay data were initially recorded as Li (ppm). It is standard industry practice to present lithium results as Li₂O%. This is done by applying a conversion factor – the Li (ppm) was divided by 10,000 and that result was then multiplied by 2.153 to calculate the Li₂O%.
Location of data points	<ul style="list-style-type: none"> • Accuracy and quality of surveys used to locate drill holes (collar and down-hole surveys), trenches, mine workings and other locations used in Mineral Resource estimation. • Specification of the grid system used. • Quality and adequacy of topographic control. 	<ul style="list-style-type: none"> • All drill hole collars from 2010-13 and 2016 were surveyed by Heyhoe Surveys, Geraldton, WA using a Trimble R6 RTK GPS system with an accuracy of +/- 0.02m in the horizontal and +/- 0.03m in the vertical relative to control station Pilg1. Pilg1 was established by R6 RTK GPS using SSM KM3 Marble Bar38 (horizontal) and SSM R610 (vertical). • The grid co-ordinates used were Map Grid of Australia (MGA) and GDA94 Zone 50. AHD elevations use the Ausgeoid98 Geoid model. • The drill hole collars from 2017-18 were surveyed by Altura Survey personnel using a Leica GS10/AS10 Base station and Leica GS16/GS14/CS20 RTK Rover set. • The collars were located by RTK GPS to an accuracy of +/-0.02m (X/Y/Z). • The Grid System used by Altura on site is MGA Zone 50K. • Topographic control supplied by Altura Survey was collated from combined RTK GPS point data, Original LiDAR data and recent UAV Aerial data. Surface levels over the entire area of concern supplied by Altura Survey department are accurate to +/-0.10m. • The nature of the topography is such that the current number of survey points and their

Criteria	JORC Code explanation	Commentary
		<p>accuracy is considered adequate for the topographic control used for all completed exploration work and resource/ reserve estimation work.</p> <ul style="list-style-type: none"> Down hole surveys were completed on selected RC holes and their twinned DD holes over the extent of the Pilgangoora resource area. The 2010-13 surveys were completed by Down Hole Surveys of Perth, WA using a GyroSmart tool. The 2016-18 down hole surveys were completed using a Reflex Ez-Shot camera.
Data spacing and distribution	<ul style="list-style-type: none"> Data spacing for reporting of Exploration Results. Whether the data spacing and distribution is sufficient to establish the degree of geological and grade continuity appropriate for the Mineral Resource and Ore Reserve estimation procedure(s) and classifications applied. Whether sample compositing has been applied. 	<ul style="list-style-type: none"> Previously RC holes were drilled on a nominally spaced 40m x 40m grid pattern covering the strike extent of the Pilgangoora pegmatite zone. In 2017, RC holes were drilled on an infill 20m x 20m grid pattern in the areas planned to be mined during the first three years of production. The 2018 RC holes were drilled on a 40m x 40m grid pattern to infill previous drilling. Both grid patterns are considered adequate spacing for establishing geological and grade continuity both along strike and down dip. From outcrop mapping and costean exposures, the pegmatite dykes exhibit consistency over distances exceeding 20-40m and data acquired from drill holes at this spacing is considered adequate for the definition of resource and reserve estimations in accordance with the JORC code. No sample compositing has been applied within the resource area.
Orientation of data in relation to geological structure	<ul style="list-style-type: none"> Whether the orientation of sampling achieves unbiased sampling of possible structures and the extent to which this is known, considering the deposit type. If the relationship between the drilling orientation and the orientation of key mineralised structures is considered to have introduced a sampling bias, this should be assessed and reported if material. 	<ul style="list-style-type: none"> The strike of the pegmatite dykes is between 010-030°NNE and the general dip is 25-45°ESE. Most of the RC holes were drilled at -60° dip on azimuths between 270° and 300°, which enabled accurate measurement of the true width of the mineralisation and unbiased sampling. A set of vertical RC holes were drilled along the eastern tenement boundary plus in some other areas, including the southern end of the deposit. These holes also achieved unbiased sampling. All ore zones occur inside the intersected pegmatites.
Sample security	<ul style="list-style-type: none"> The measures taken to ensure sample security. 	<ul style="list-style-type: none"> The chain of custody for sampling procedures and sample analysis was managed by the Rig Geologists and Field Technicians during the various drilling campaigns. Sample material was geologically logged and the numbered calico sample bags were then collected from designated pegmatite intervals. These intervals were determined by the Rig Geologist either at the time of drilling or at the completion of a drill hole. Three to four calico sample bags were placed in larger bags for sample transport and then stored on site temporarily while a sample batch (for a group of drill holes) was prepared. The total number of samples was checked on site by site personnel prior to being transportation to Port Hedland. Initial samples were delivered by Toll-Ipec to Ultra Trace in Cannington, Perth and later samples were delivered by Regal Transport to LabWest in Malaga, Perth. The 2017 samples were delivered by Regal Transport to SGS in Perth. The 2018 samples were delivered by RGR Transport to Intertek in Perth. Staff from the various laboratories checked the sample bags and totals for each sample batch before commencing sample preparation.

Criteria	JORC Code explanation	Commentary
		<ul style="list-style-type: none"> Remaining DD core and RC chip samples collected for the drill hole library and are stored in secure facilities on site. Assay pulps for all assayed samples are retained in permanent storage by Altura.
<i>Audits or reviews</i>	<ul style="list-style-type: none"> <i>The results of any audits or reviews of sampling techniques and data.</i> 	<ul style="list-style-type: none"> A review of sampling techniques used in 2010-13 and a thorough drill hole data review was undertaken by Ravensgate in September 2015 and then by Hyland Geological and Mining Consultants (HGMC) in August 2016. The sampling methods used in the period from June to October 2016; May to July 2017 and February to March 2018 complied with industry standards. In August 2017 Altura conducted an internal QAQC review of the sampling techniques used and data collected from May to July.

Section 2 Reporting of Exploration Results

(Criteria listed in the preceding section also apply to this section.)

Criteria	JORC Code explanation	Commentary
<i>Mineral tenement and land tenure status</i>	<ul style="list-style-type: none"> Type, reference name/number, location and ownership including agreements or material issues with third parties such as joint ventures, partnerships, overriding royalties, native title interests, historical sites, wilderness or national park and environmental settings. The security of the tenure held at the time of reporting along with any known impediments to obtaining a licence to operate in the area. 	<ul style="list-style-type: none"> The deposit lies within the M45/1230 and M45/1231 mining tenements which were granted on 26 August 2016. These are owned 100% by Altura Lithium Operations Pty Ltd (a wholly owned subsidiary of Altura Mining Limited). All tenements covering the deposit are in good standing and there is no known impediment to obtaining a license to operate.
<i>Exploration done by other parties</i>	<ul style="list-style-type: none"> Acknowledgment and appraisal of exploration by other parties. 	<ul style="list-style-type: none"> There has been no exploration for lithium completed on this ground by other parties.
<i>Geology</i>	<ul style="list-style-type: none"> Deposit type, geological setting and style of mineralisation. 	<ul style="list-style-type: none"> Altura's Pilgangoora lithium project occurs at the southern end of a structurally controlled zone of pegmatite intrusive dykes within the synformal Pilgangoora greenstone belt. The pegmatite dykes are hosted within amphibolites which have a mafic and ultramafic volcanic origin. A total of 13 mineralised pegmatites have been identified and these generally strike 010-030°NNE and dip 25-45°ESE. The dykes range in thickness from 1-64m and are usually 8-14m thick. The mineralised pegmatites are within a north-northeast (NNE) trending zone which is approximately 1600m long, 550m wide and up to 450m deep. The mineralised pegmatites are located approximately 2-3km east of a granite contact. There are several barren pegmatites located in the zone between the granite contact and the mineralised pegmatite zone. Note – the granite contact and barren pegmatites were identified via sterilisation drilling carried out in 2016 for proposed infrastructure and waste dump areas. Significant mineralisation in each of the pegmatites is confined to lithium and rubidium (almost wholly reporting in spodumene and muscovite respectively) with relatively low values for tin and tantalum or other associated minerals.
<i>Drill hole Information</i>	<ul style="list-style-type: none"> A summary of all information material to the understanding of the exploration results including a tabulation of the following information for all Material drill holes: <ul style="list-style-type: none"> easting and northing of the drill hole collar elevation or RL (Reduced Level – elevation above sea level in metres) of the drill hole collar dip and azimuth of the hole down hole length and interception depth hole length. If the exclusion of this information is justified on the basis that the information is not Material and this exclusion does not detract from the understanding of the report, the Competent Person should clearly explain why this is the case. 	<ul style="list-style-type: none"> Significant results were last reported in the stipulated format in an ASX announcement released on 13/03/17. Drilling results were also reported to the ASX on 02/03/2011, 15/03/2011, 09/05/2011, 16/06/2011, 05/07/2011, 03/08/2011, 21/11/2011, 08/05/2012, 03/10/2012, 22/06/2015, 22/09/2016, 21/11/16, 30/01/17 and 24/10/17. A staged series of drilling programs commencing in August 2010 and extending through to March 2013 covered a majority of the pegmatite field with 290 drill holes. There were 282 RC holes (including four water bore holes) totalling 24,649m and eight diamond core drill holes totalling 1,387.9m completed during that period. In April 2016, DD work comprised of 9 holes totalling 854m. A total of 246 RC holes were completed from June-October 2016, totalling 41,070m. A total of 139 RC holes (25,233m) were drilled in the main deposit area and 107 RC sterilisation holes (15,837m) were completed within the areas designated for infrastructure, waste

Criteria	JORC Code explanation	Commentary
		<p>dumps, tailings storage facility and other associated surface installations.</p> <ul style="list-style-type: none"> In May to July 2017, 189 RC holes were completed totalling 8,369m. In February to March 2018, 44 RC holes totalling 4,654m were completed. During the period from 2010-18, a total of 17 DD holes (2,241.9m) and 761 RC holes (78,922m) have been completed.
<i>Data aggregation methods</i>	<ul style="list-style-type: none"> In reporting Exploration Results, weighting averaging techniques, maximum and/or minimum grade truncations (e.g. cutting of high grades) and cut-off grades are usually Material and should be stated. Where aggregate intercepts incorporate short lengths of high grade results and longer lengths of low grade results, the procedure used for such aggregation should be stated and some typical examples of such aggregations should be shown in detail. The assumptions used for any reporting of metal equivalent values should be clearly stated. 	<ul style="list-style-type: none"> No weighting or averaging techniques were used on samples or assays prior to reporting Exploration Results. There has been no cutting of high grade intercepts as the nature of spodumene distribution in pegmatite lenses and the evidence of continuity from drill assay results is sufficient to accept higher grade values that are consistent between the intercepts. No metal equivalent values are reported.
<i>Relationship between mineralisation widths and intercept lengths</i>	<ul style="list-style-type: none"> These relationships are particularly important in the reporting of Exploration Results. If the geometry of the mineralisation with respect to the drill hole angle is known, its nature should be reported. If it is not known and only the down hole lengths are reported, there should be a clear statement to this effect (e.g. 'down hole length, true width not known'). 	<ul style="list-style-type: none"> The drill holes were drilled at right angles (300°) or slightly oblique (270°) to the strike of the pegmatite dykes. In the main Pilgangoora deposit area the grid base line was oriented due north. In the eastern area initial drilling was on a 030° orientated grid; this orientation was also used in later drilling, including the drilling completed in 2016-18. Most drill holes were angled at -60° and some vertical (-90°) holes were also drilled. The mineralised dykes regularly dip around 35° (range between 25-45°); reported thicknesses are about 10-15% greater than true thickness. Calculated true widths were not reported however are correctly accounted for in 3D modelling.
<i>Diagrams</i>	<ul style="list-style-type: none"> Appropriate maps and sections (with scales) and tabulations of intercepts should be included for any significant discovery being reported. These should include, but not be limited to a plan view of drill hole collar locations and appropriate sectional views. 	<ul style="list-style-type: none"> A plan showing the drill hole layout is shown in Figure 1 of this announcement. A copy of the pegmatite lodes and drill hole locations is shown in Figure 2 of this announcement.
<i>Balanced reporting</i>	<ul style="list-style-type: none"> Where comprehensive reporting of all Exploration Results is not practicable, representative reporting of both low and high grades and/or widths should be practiced to avoid misleading reporting of Exploration Results. 	<ul style="list-style-type: none"> Balanced reporting of intersection results has been provided in this and all previous announcements.
<i>Other substantive exploration data</i>	<ul style="list-style-type: none"> Other exploration data, if meaningful and material, should be reported including (but not limited to): geological observations; geophysical survey results; geochemical survey results; bulk samples – size and method of treatment; metallurgical test results; bulk density, groundwater, geotechnical and rock characteristics; potential deleterious or contaminating substances. 	<ul style="list-style-type: none"> Preliminary metallurgical studies show that a spodumene concentrate grading over 6.00 Li₂O% can be produced. 283 density measurements have been completed on diamond drill core. RQD measurements and preliminary hardness tests. Assays to date have not indicated any potential deleterious or contaminating substances.
<i>Further work</i>	<ul style="list-style-type: none"> The nature and scale of planned further work (e.g. tests for lateral extensions or depth extensions or large-scale step-out drilling). Diagrams clearly highlighting the areas of possible extensions, including the main geological interpretations and future drilling areas, provided this information is not 	<ul style="list-style-type: none"> Future infill drilling programs will need to be carried within the remainder of the proposed mining area, particularly in the central hill and southeast corner areas. Closely spaced (suggested 10m x 10m) 'grade control' drilling of pegmatites is planned prior to the commencement of and

Criteria	JORC Code explanation	Commentary
	<i>commercially sensitive.</i>	<p>during mining.</p> <ul style="list-style-type: none"> The assay results of the 'grade control' drilling will be compared with the exploration and infill drilling results to quantify the estimated lithium grades.