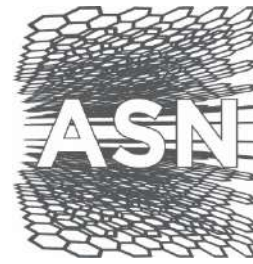


Paradox Basin Project: The New Lithium Province

November 2017

2017 International Lithium,
Graphite & Cobalt Conference



Anson Resources Ltd





The information contained in this confidential document ("Presentation") has been prepared by Anson Resources Limited (the "Company"). It has not been fully verified and is subject to material updating, revision and further amendment. The Information may not be distributed to others at any time without the prior written consent of the Company (including the presentation) any copies thereof, and will destroy all analysis, complications and other documents or writings whatsoever containing or reflecting any such material.

While the information contained herein has been prepared in good faith, neither the Company nor any of its shareholders, directors, officers, agents, employees or advisers give, have given or have authority to give, any representations or warranties (express or implied) as to, or in relation to, the accuracy, reliability or completeness of the information in this Presentation, or any revision thereof, or of any other written or oral information made or to be made available to any interested party or its advisers (all such information being referred to as "Information") and liability therefore is expressly disclaimed. Accordingly, neither the Company nor any of its shareholders, directors, officers, agents, employees or advisers take any responsibility for, or will accept any liability whether direct or indirect, express or implied, contractual, tortious, statutory or otherwise, in respect of, the accuracy or completeness of the Information or for any of the opinions contained herein or for any errors, omissions or misstatements or for any loss, howsoever arising, from the use of this Presentation.

Neither the issue of this Presentation nor any part of its contents is to be taken as any form of commitment on the part of the Company to proceed with any transaction and the right is reserved to terminate any discussions or negotiations with any prospective investors. In no circumstances will the Company be responsible for any costs, losses or expenses incurred in connection with any appraisal or investigation of the Company. In furnishing this Presentation, the Company does not undertake or agree to any obligation to provide the recipient with access to any additional information or to update this Presentation or to correct any inaccuracies in, or omissions from, this Presentation which may become apparent.

This Presentation should not be considered as the giving of investment advice by the Company or any of its shareholders, directors, officers, agents, employees or advisers. Each party to whom this Presentation is made available must make its own independent assessment of the Company after making such investigations and taking such advice as may be deemed necessary. In particular, any estimates or projections or opinions contained herein necessarily involve significant elements of subjective judgment, analysis and assumptions and each recipient should satisfy itself in relation to such matters.

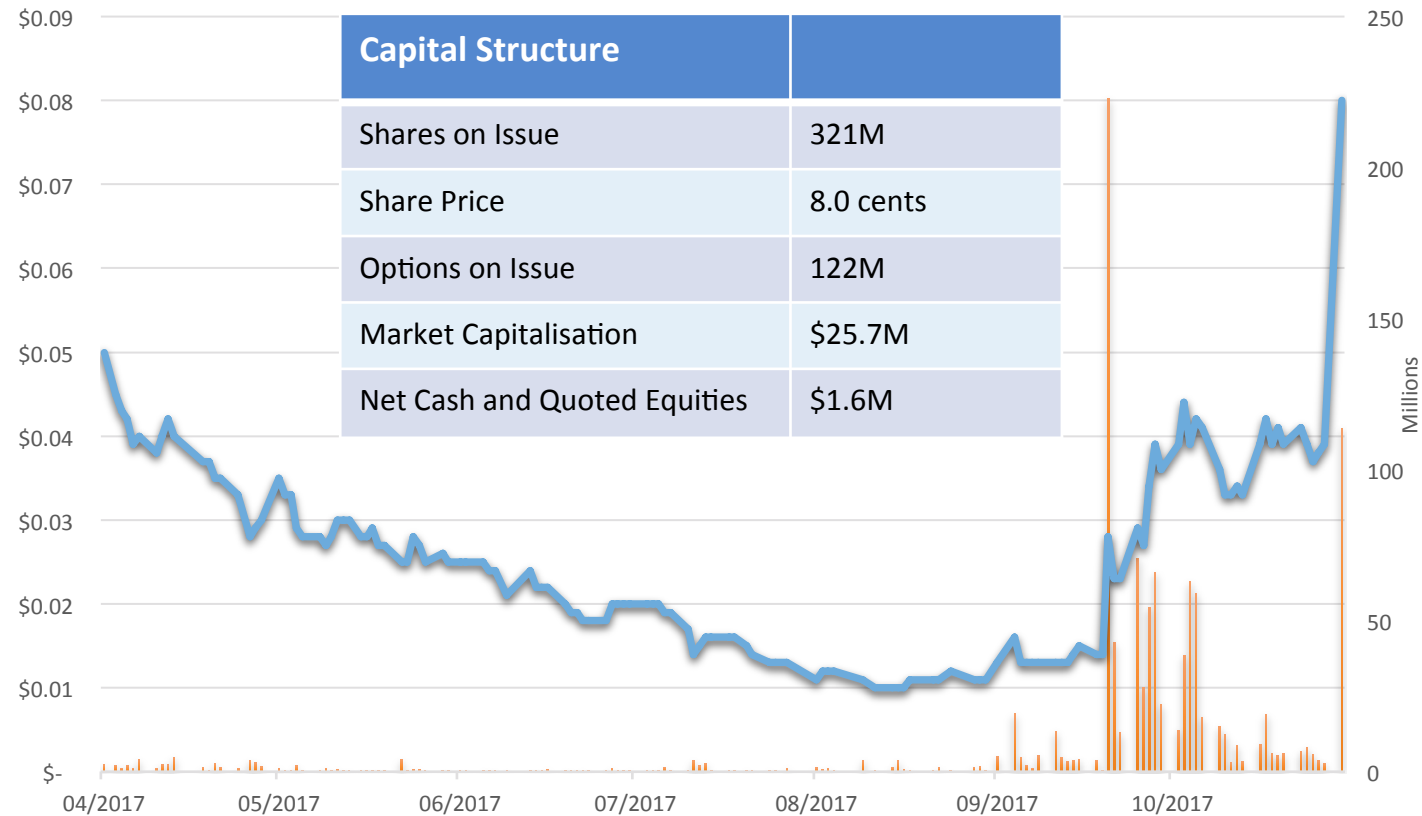
This Presentation includes certain statements that may be deemed "forward-looking statements". All statements in this discussion, other than statements of historical facts, that address future activities and events or developments that the Company expects, are forward-looking statements. Although the Company believes the expectations expressed in such forward-looking statements are based on reasonable assumptions, such statements are not guarantees of future performance and actual results or developments may differ materially from those in the forward-looking statements. Factors that could cause actual results to differ materially from those in forward-looking statements include market prices, continued availability of capital and financing, and general economic, market or business conditions. Investors are cautioned that any such statements are not guarantees of future performance and that actual results or developments may differ materially from those projected in forward-looking statements.

Competent Person's Statement

The information in this presentation is an accurate representation of the available data and studies for the deposit reviewed by Mr Greg Knox (MAusIMM), a Director of the Company. Mr Knox has over 25 years of exploration and mining experience in a variety of mineral deposit styles. Mr Knox has sufficient experience which is relevant to the style of mineralisation and type of deposit under consideration and to the activity which he is undertaking to qualify as a Competent Person as defined in the 2012 Edition of the "Australasian Code for reporting of Exploration Results, Mineral Resources.



ASN



Top Shareholders

(Total shareholders 1125)

Zhongfan Group	6.25%
B Richardson	5.45%
G Knox	3.30%
M Klein	2.93%
B McLeod	2.27%
Li Xiao	1.99%
Wo Wah Ind,	1.99%

Private Placement to overseas significant investor 20 million shares @ \$0.03 for \$600,000 payment 27 October 2017
 500,000 Options on issue - exercise price \$0.055 on or before 21 September 2018
 121 Million new options to be issued 4th October @ 2.5 cents – expiry August 2018

Anson Research: 30/10/2017



**Bruce McLeod, B.Sc. (Maths),
M.Com (Econ) - Non Exec Chairman**

- Experienced public company director
- >25 years experience in the Australian capital markets.
- Corporate funding experience in resources and property industries.
- Extensive experience in the takeover and rationalisation of companies.



**Bruce Richardson, B.A (Hons) -
Managing Director**

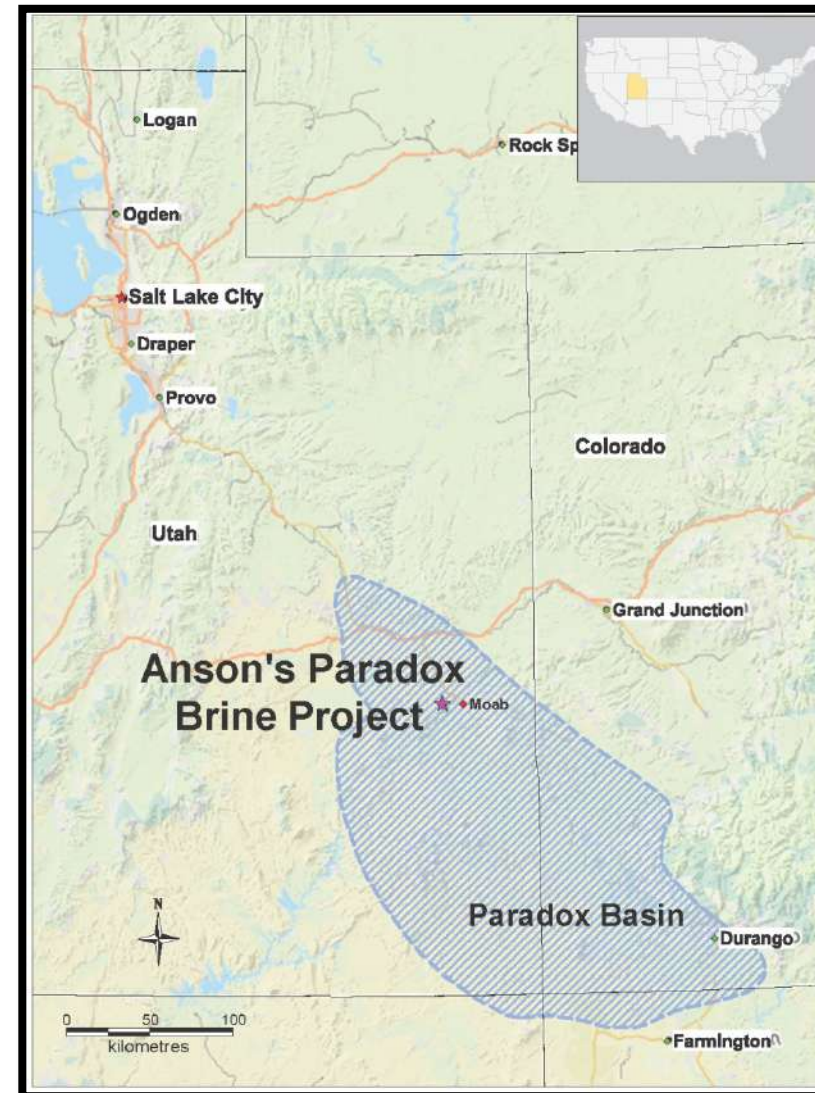
- Proven track record of 9 years in exploration, mining and production in public and private companies.
- >30 years of international business experience, particularly China.
- In the past few years has raised over \$170 million dollars of investment in mining projects.



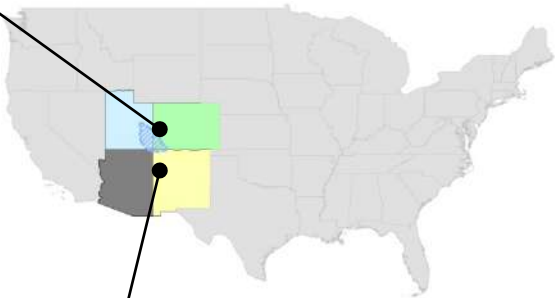
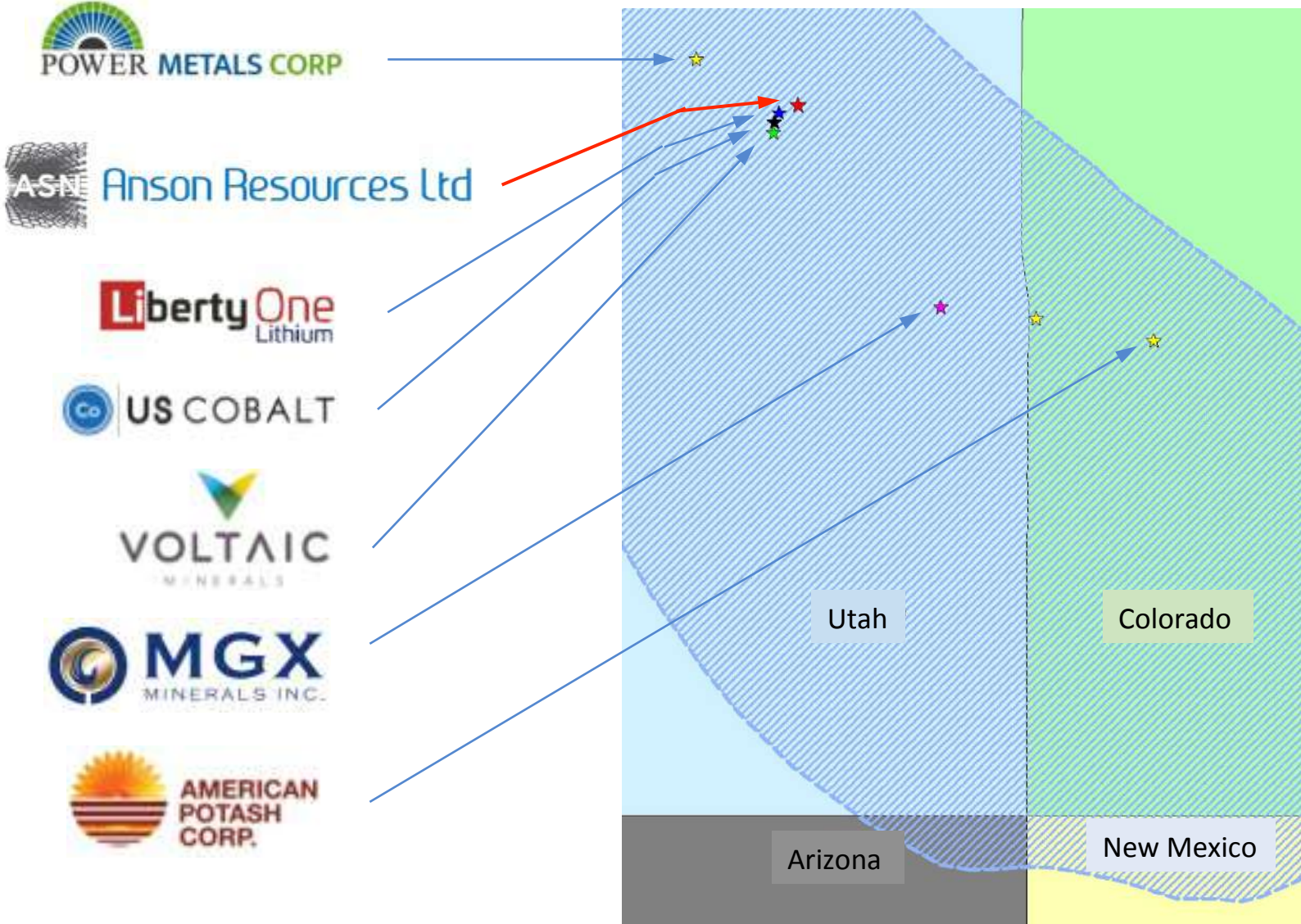
**Peter (Greg) Knox B.Sc. (Geology) –
Non Executive Director**

- Mr Knox is a qualified geologist with over 30 years of experience in exploration, mine development and mining operations.
- He has worked on projects from grass-roots exploration through to mine development and production.

- Multiple exploration companies in the 4 corners “New Lithium Province”:
 - Voltaic Minerals
 - MGX
 - American potash
 - Liberty One
 - US Cobalt
 - Power Metals
 - Standard Lithium
- Anson strategically located in the deepest part of the Paradox Basin
- Brines known to exist throughout the Paradox Basin which covers an area 33,000 square miles (85,470km²)



Four Corners Lithium Explorers



Company	Acres	Target
Anson Resources	5,767	Li Brines
Liberty One	4,480	Li Brines
Voltaic Metals	4,160	Li Brines
US Cobalt	2,220	Li Brines
Power Metals	JV	Li Brines
American Potash	JV	Li, Potash
MGX	118,000	Li/Oil Brines

Location:

- Tesla Gigafactory 11 hr drive
- Known Mining and Oil & Gas jurisdiction, Grand County Utah, USA
- 15km west of Moab
- 4km northwest of operating potash mine

Weather:

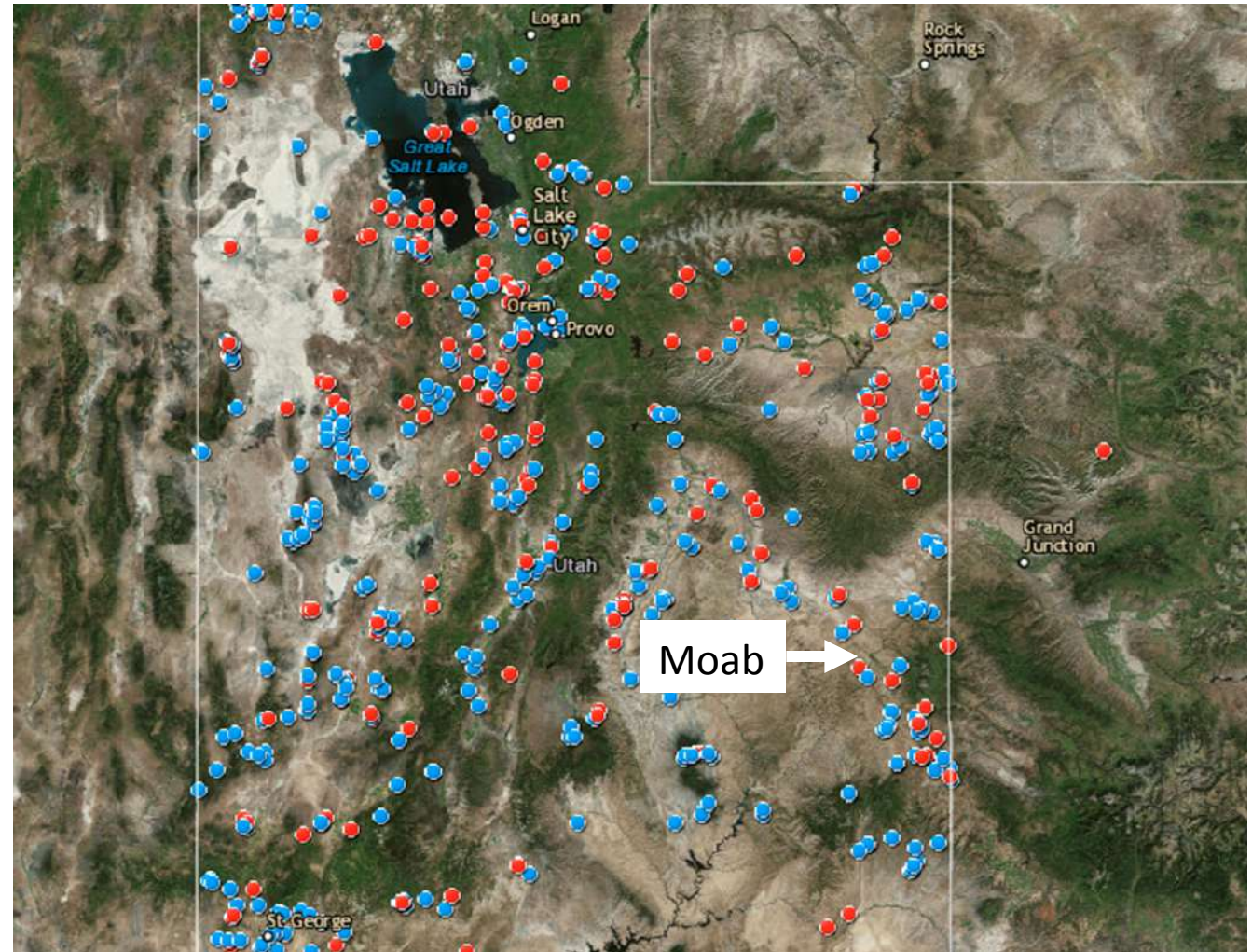
- High semi-desert region
- Rainfall – 10 inches
- 300 days of sun



- Mineral Mines in Utah March 2015

Active Mine ●
Retired Mine ●

- approximately 200 different minerals mined in Utah
- 600 permitted mineral operations state-wide
- 2014 data from the U.S. Geological Survey, Utah ranks 5th in the value of non-fuel mineral production, accounting for approximately 5.4 percent of the United States total



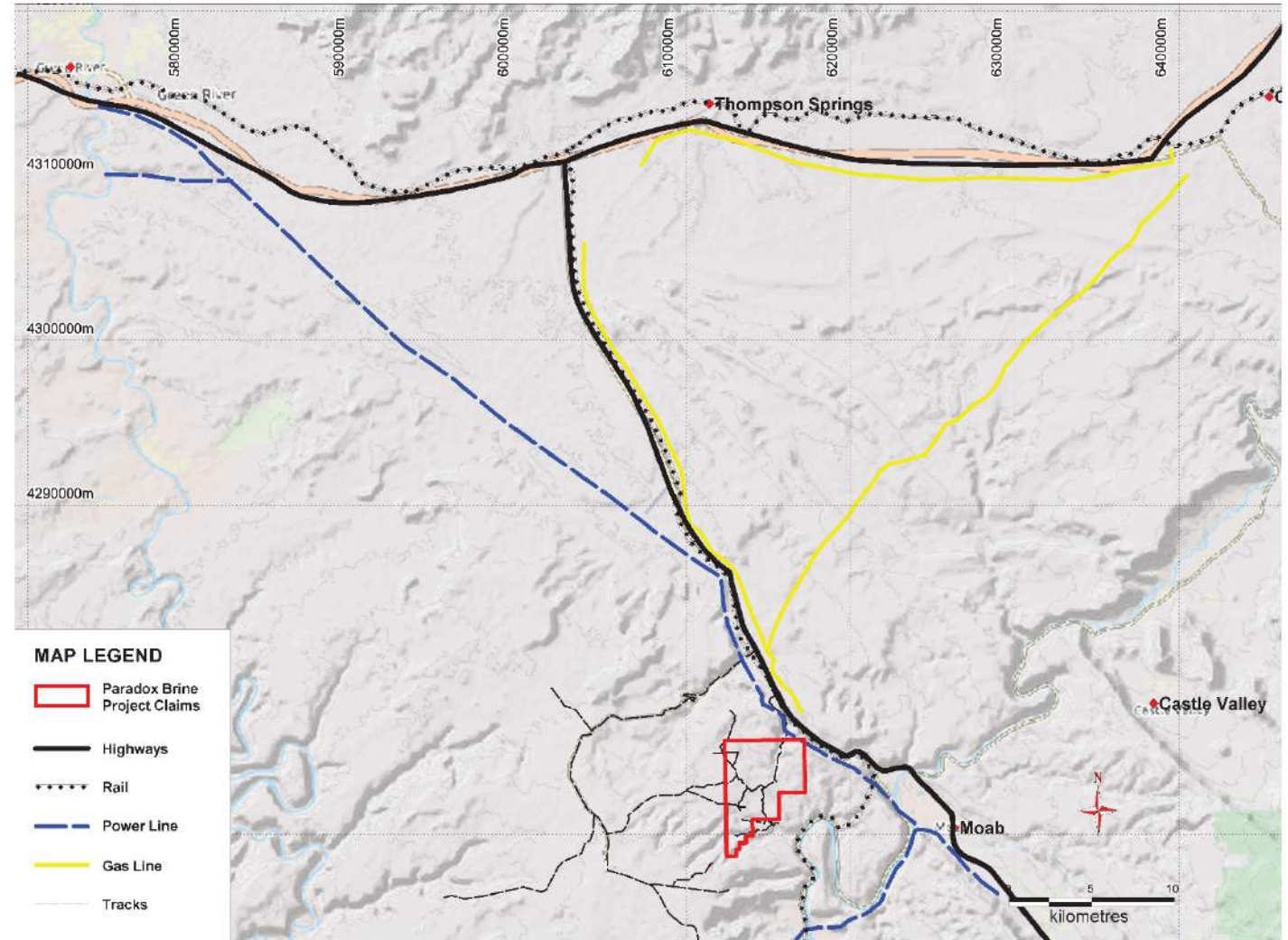
<http://ogm.utah.gov/minerals/default.html>

- The Bingham Canyon Mine, more commonly known as Kennecott Copper Mine among locals, is an open-pit mining operation extracting a large copper deposit southwest of Salt Lake City, Utah
- The mine is the largest man-made excavation in the world and is considered to have produced more copper than any other mine in history – more than 19 million tonnes
- The mine is owned by Rio Tinto

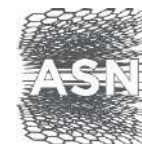




- Close proximity to key infrastructure:
 - Interstate Highway
 - Railway
 - Power Line
 - Gas Line



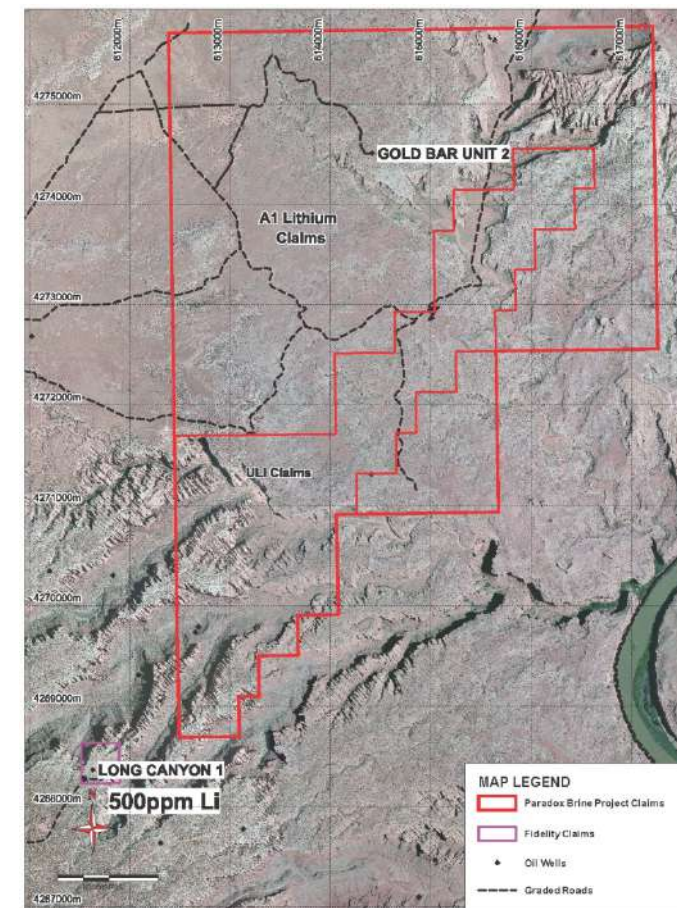
Paradox Brine Project – Overview



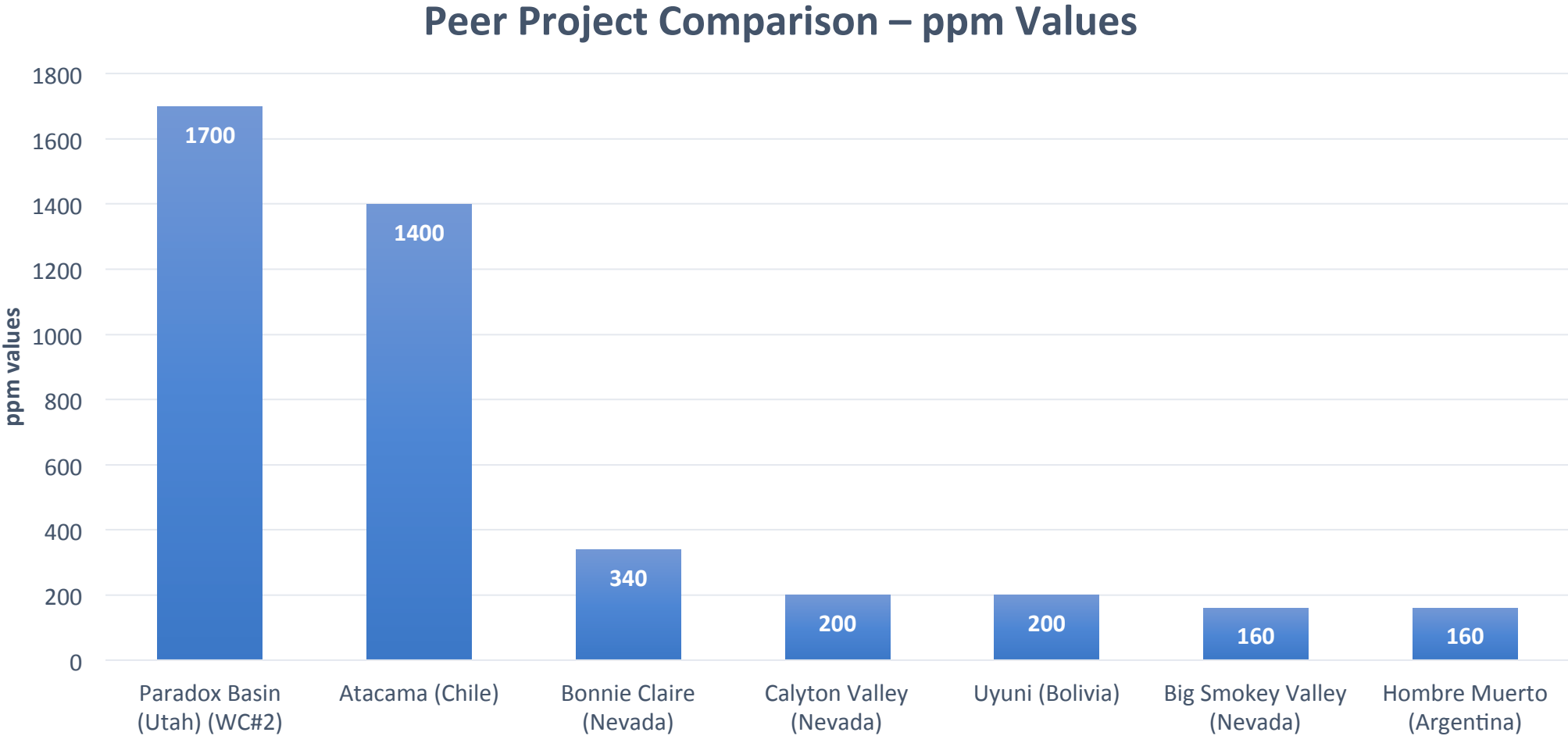
Anson Resources Ltd

- 291 placer claims with an area of 5,767 acres (23.3 square kilometres)
- Long Canyon No. 1 operating well with known brine value of 500ppm from Clastic Zone 31 at 6,013 feet
- White Cloud No. 2 with known brine value of 1,700ppm from Clastic Zone 31 at 6,015 feet (100 metres from Long Canyon No.1)
- 8.9 km strike length along Robert's Rupture within the Paradox Basin

Well/ppm	Li	Br	B	I	Mg
Long Canyon 1	500	6,100	n/a	300	21,000
White Cloud No.2	1,700	2,500	20,000	450	43,600
Big Flat Unit 2	173	1,150	2,922		47,789



Source: UDS open file data



Source: Canaccord Genuity research

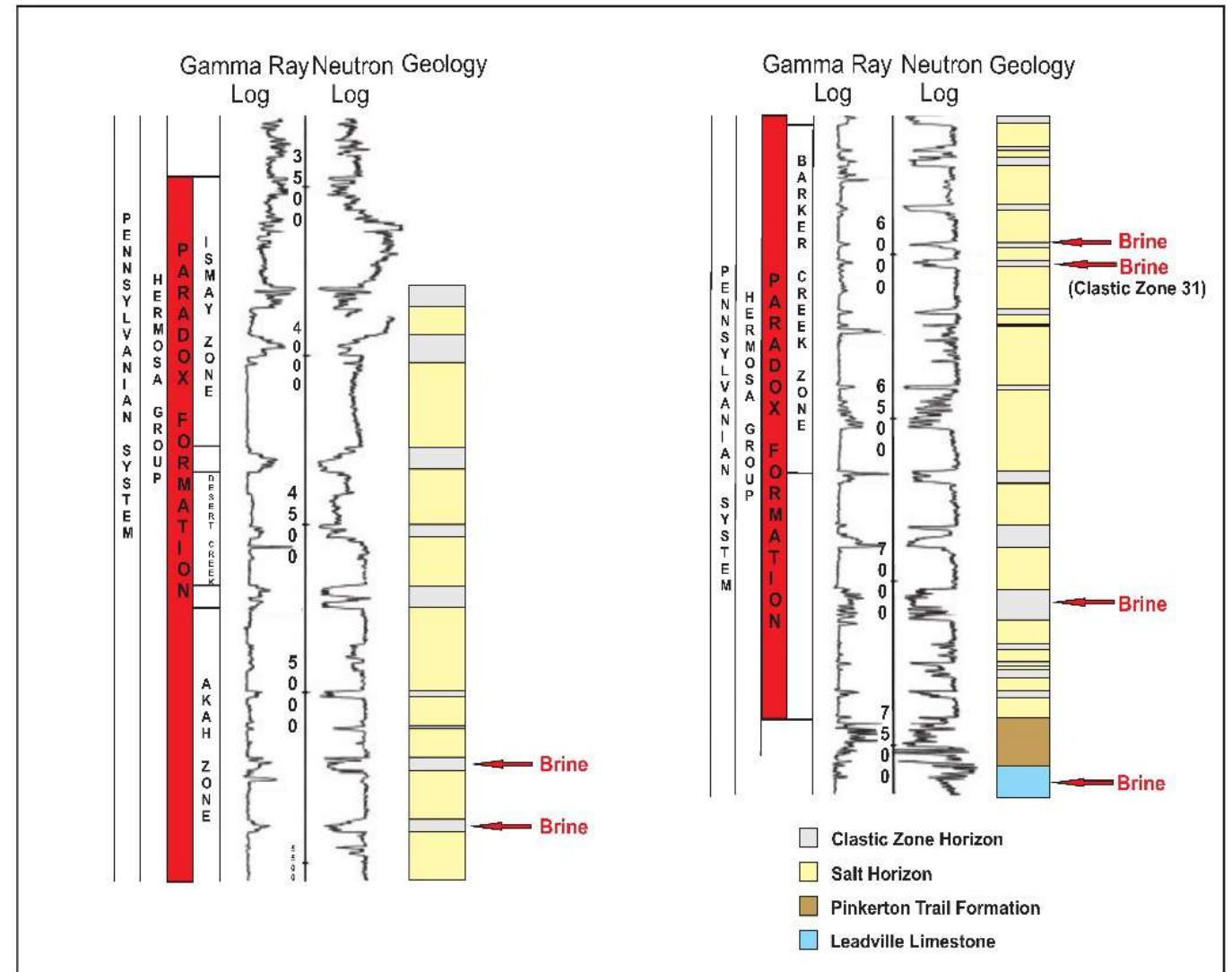


Well	Clastic Zone 31 Li level
Big Flat Unit 2	173 ppm
Long Canyon 1	500 ppm
White Cloud	1700 ppm
Average grade	791 ppm
Average thickness	25 ft.

Well	Clastic Zone 17 Li level
Superior Oil	339 ppm
Pure Oil 1	134 ppm
Average grade	237 ppm
Average thickness	35 ft.



- Previous drilling and sampling 1700ppm (WC#2) & 500ppm (LC#1)
- White Cloud No. 2 and Long Canyon No. 1 brine flowed to surface under own pressure (lithium rich)
- Additional brine horizons above and below Clastic Zone 31 exist in the paradox basin
- Clastic Zone 31 is possibly replenished by aquifer(s)
- Extensive historical database - seismic and drill hole data available

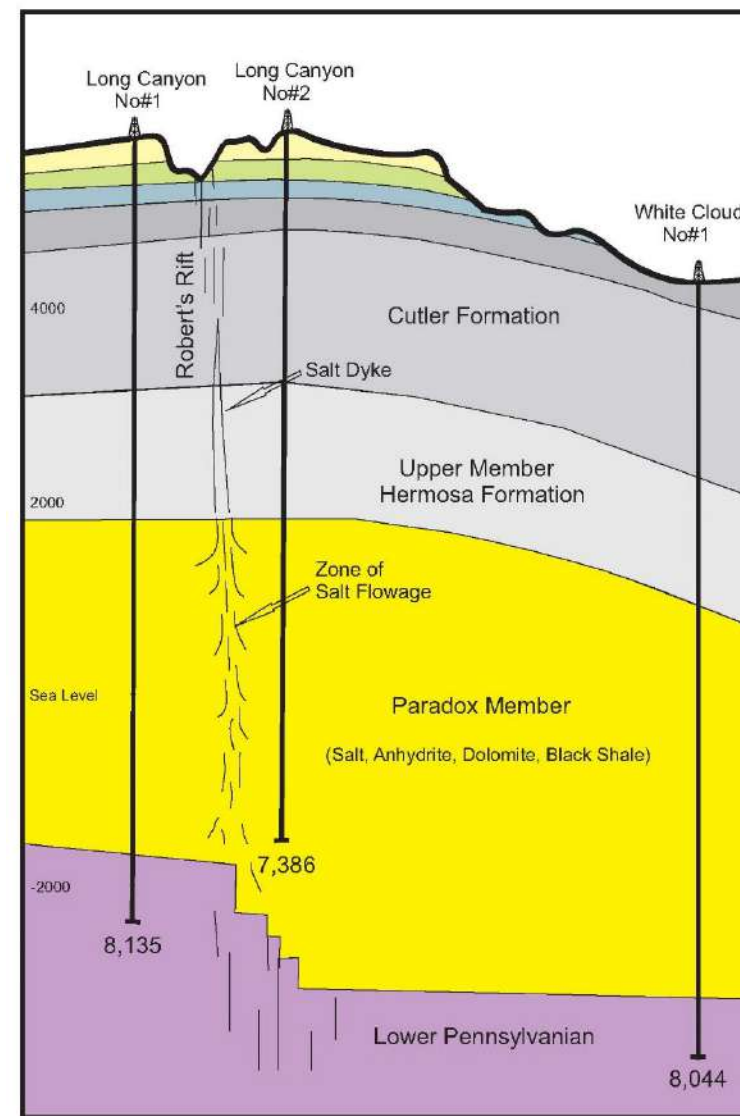


Long Canyon #1 Geophysical Logs: Geology & Brine Horizons (Due to proximity, representative of WC#2)

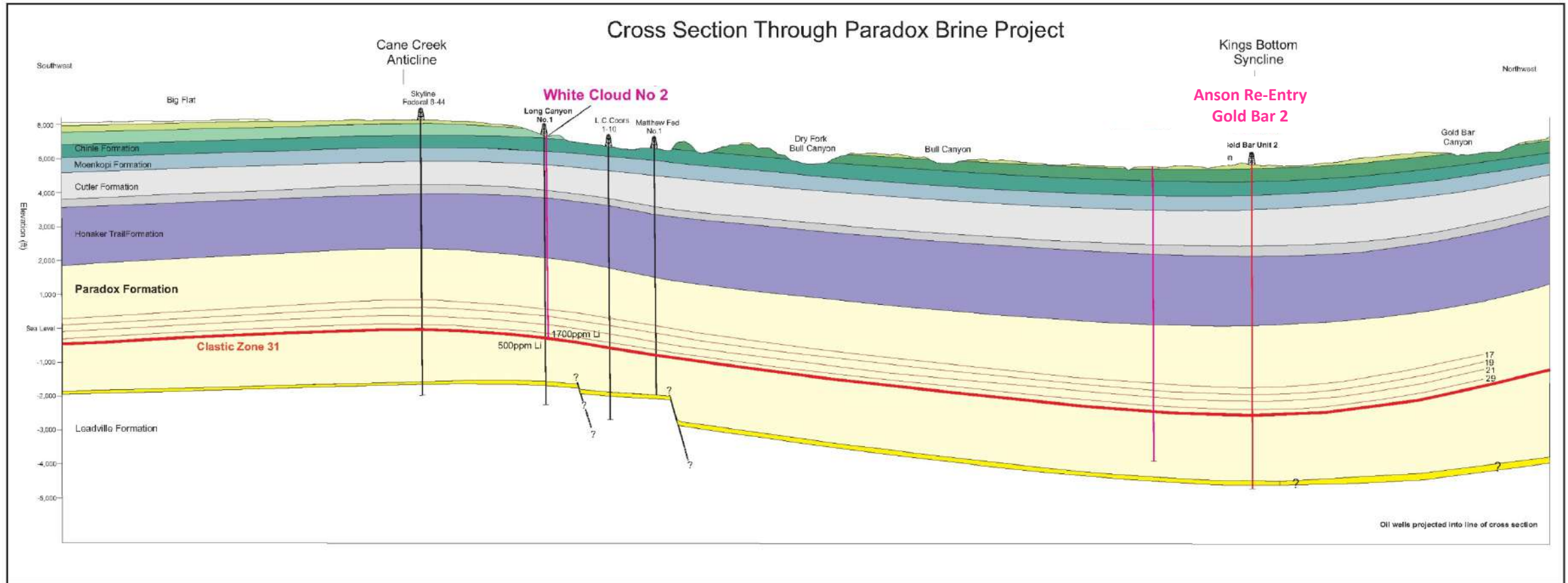
Robert's Rupture Significance:

- Caused fracturing of rock formations to over 7,000 ft in depth
- Increases permeability and porosity
- Promotes fluid mobility
- Fracture and alteration is visible at surface
- White Cloud No. 2 Assays 1,700ppm

Long Canyon No. 1: 500ppm Grade and Characteristics to be Confirmed - Resampling

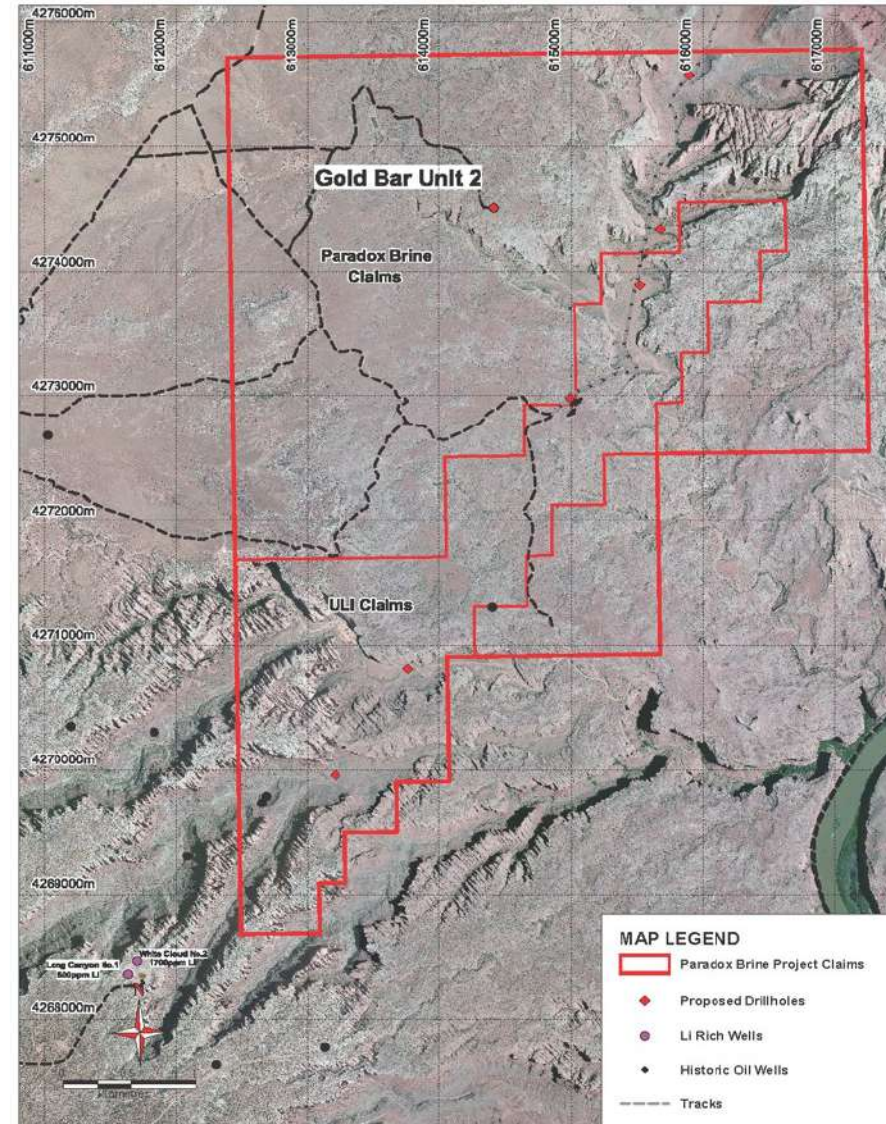


Simplified Stratigraphic Sequence



- **Clastic Zone 31 is the main target horizon (bold red line)**
- Cross section shows the location of Anson's re-entry (White Cloud No. 2 with 1,700ppm) adjacent to Long Canyon No.1 with 500ppm and other strategic targets, such as Gold Bar Unit 2
- Clastic Zones 17, 19, 21 & 29 have previously recorded brine flows (red lines)
- Highly pressurized (4,953psi), approximately double expected pressure at this depth
- The unique pressurized brine rises to the surface already heated to 60°C (140°F)
- Usually expected 40°C (100°F)

- Gold Bar Unit 2 well drilled for oil to a depth of 9,682 feet
- Clastic 31 intersected at 7,080 feet
- Brines was recorded but not assayed
- Make over rig to be used to re-enter the well and take brine samples for testing for lithium and other minerals
- Application to drill progressing through government approval process
- Exploration program expected to commence in late Q4 2017
- Brines from several clastic levels to be sampled



Workover Rig – Multiple Clastic Zones to Target



Anson Resources Ltd

Clastic Zone	Depth (ft)	Thickness (ft)	Comment
3	4560	110.5	
5	4930	76.5	
7	5170	67.25	
9	5410	34.75	
11	5600	74.5	
13	5968	19	
15	6090	5.5	
17	6205	35.25	Confirmed Supesaturated Brine
19	6334	34.5	Confirmed Supesaturated Brine
21	6580	55.5	
23	6680	15.25	
25	6720	25	
27	6870	19.75	
29	7020	14.75	Confirmed Supesaturated Brine
31	7080	24.5	Main Target Zone
33	7270	10.5	
35	7320	6	
37	7598	8.75	
39	7830	40	
41	8018	25	
43	8266	82.25	Confirmed Supesaturated Brine
45	8370	16.75	
47	8440	8.33	
49	8560	8.33	

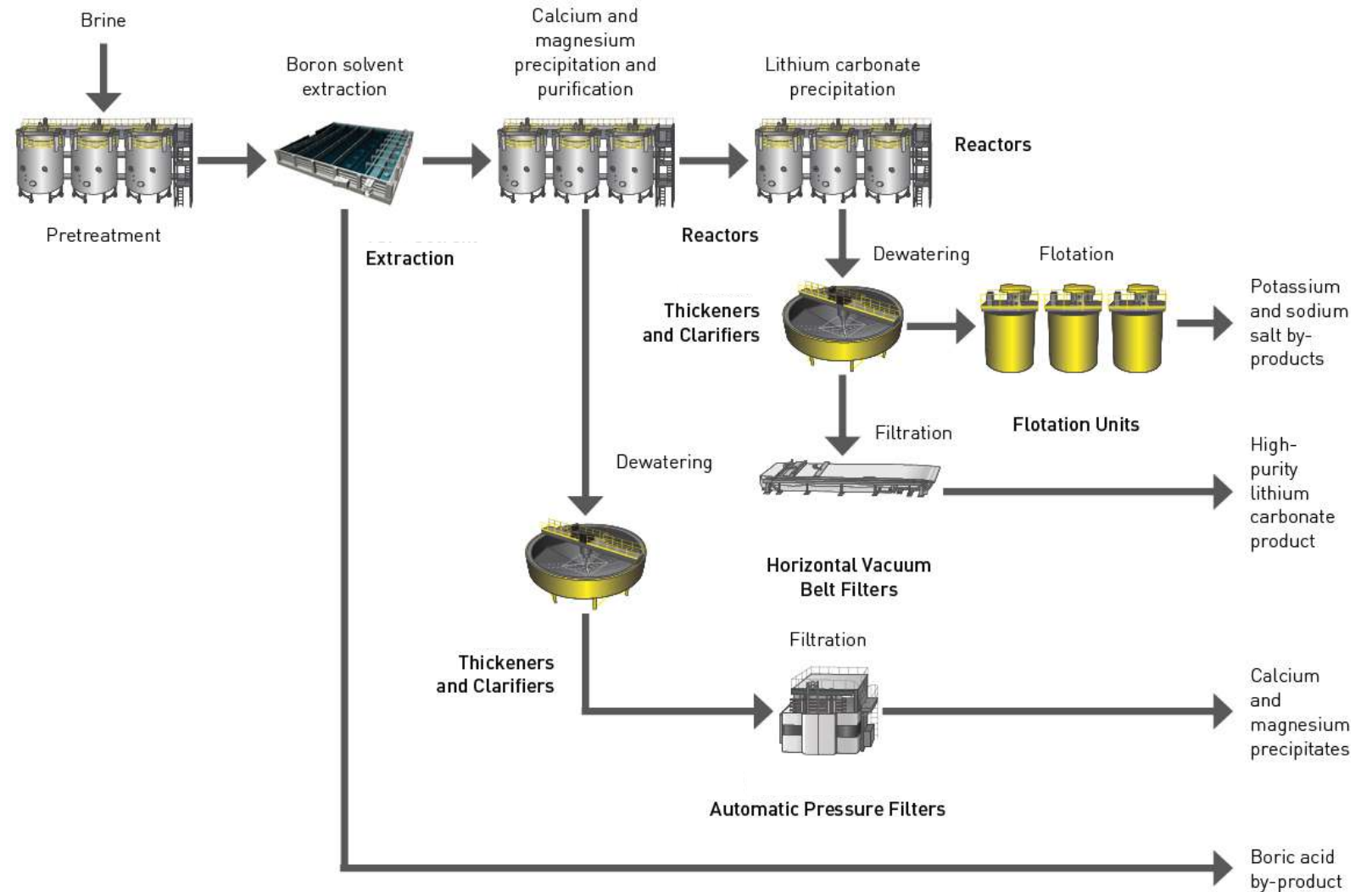


Preliminary Test Work Completed



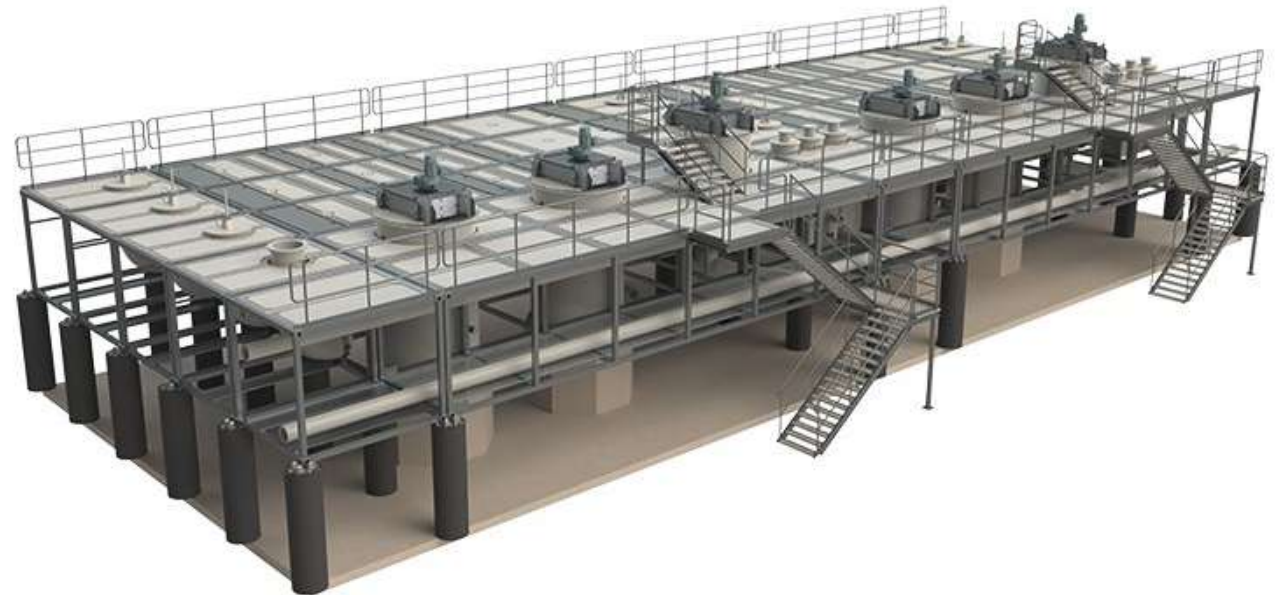
Anson Resources Ltd

- 500 ppm and 1,700ppm Synthetic brine test work:
 - Magnesium successfully precipitated
 - Fast Magnesium precipitation result achieved – 1hr
 - > 99% Calcium extraction after SX
 - Low Li Loss < 3% achieved



Solvent Extraction Technology

- Proven SX plant technology with experience in similar applications:
- BHP, Minera Spence, Chile – Copper (Cu) SX for organic chloride wash
- Codelco, Radomiro Tomic, Chile 2000 - Copper (Cu) SX Plant
- Sierra Gorda, 2015, Chile – Copper (CU) SX Plant



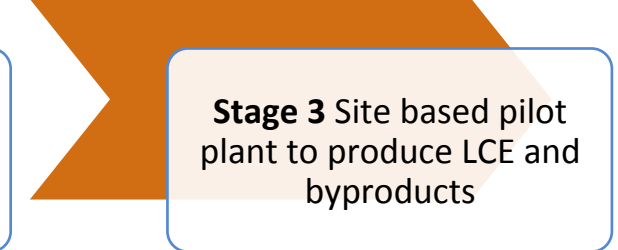
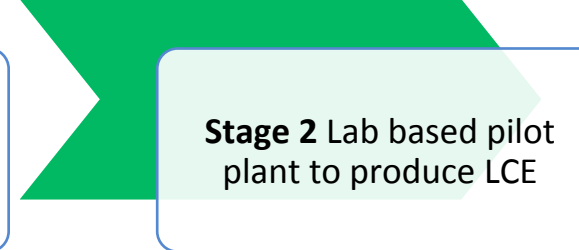
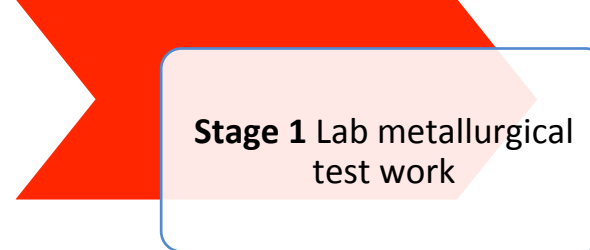
Paradox Brine Project – Fast Track To Product



Anson Resources Ltd

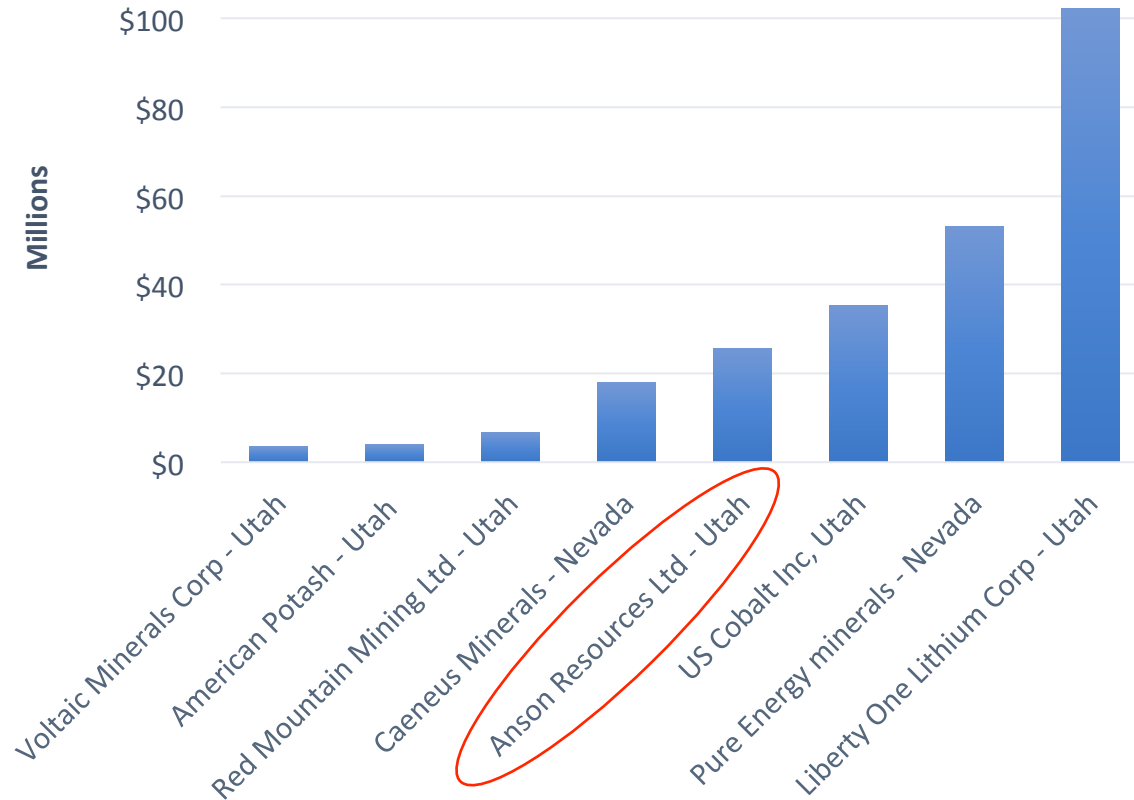
Paradox Brine Project - On Track to Product	Sep-17	Oct-17	Nov-17	Dec-17	Jan-18	Feb-18	Mar-18	Apr-18	May-18	Jun-18	Sep-18	Dec-18	Jun-19
Drilling Program													
Permit process for GB2 well re-entry	✓												
Drilling process mobilise and commence, GB2 well re-entry													
Stage 1													
Brine sample assays and transportation to test lab													
Stage 2													
Brine test work lab based pilot plant													
Lithium carbonate product qualification test commence													
Stage 3													
Site based pilot plant design and construction													
Commissioning													

Metallurgical Test Work and Plant Development Plan Estimates

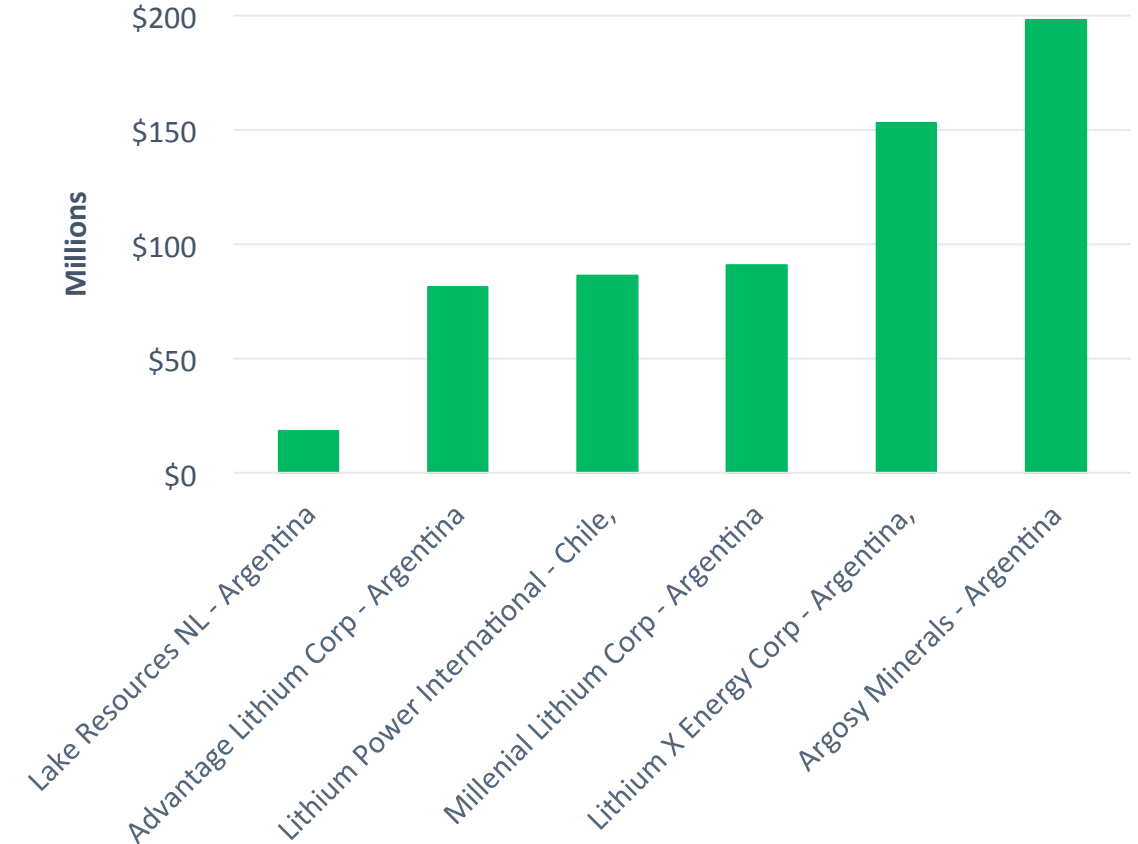




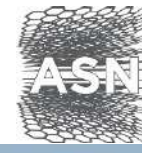
Market Cap in US (AUD\$ M)



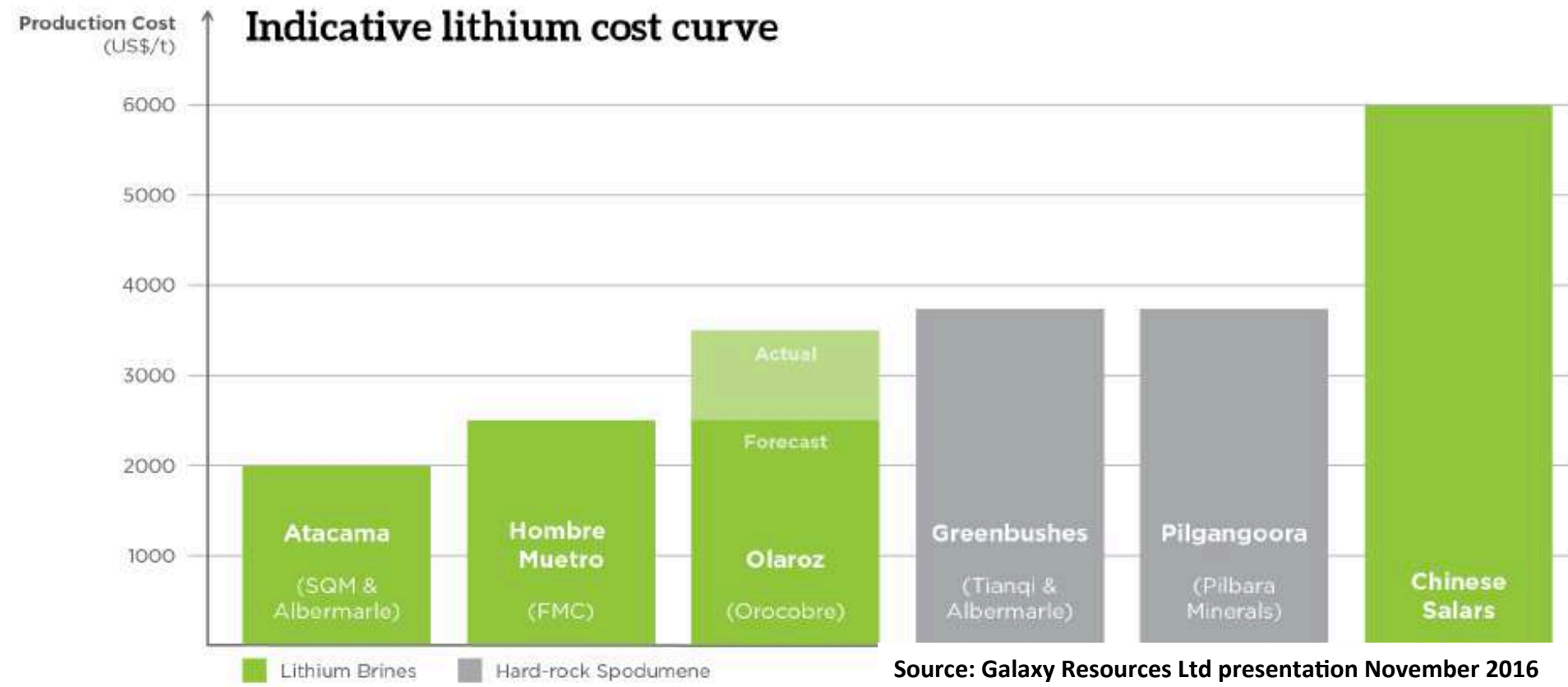
Market Cap outside of US (AUD\$ M)



Source: Anson Research 30 Oct 2017

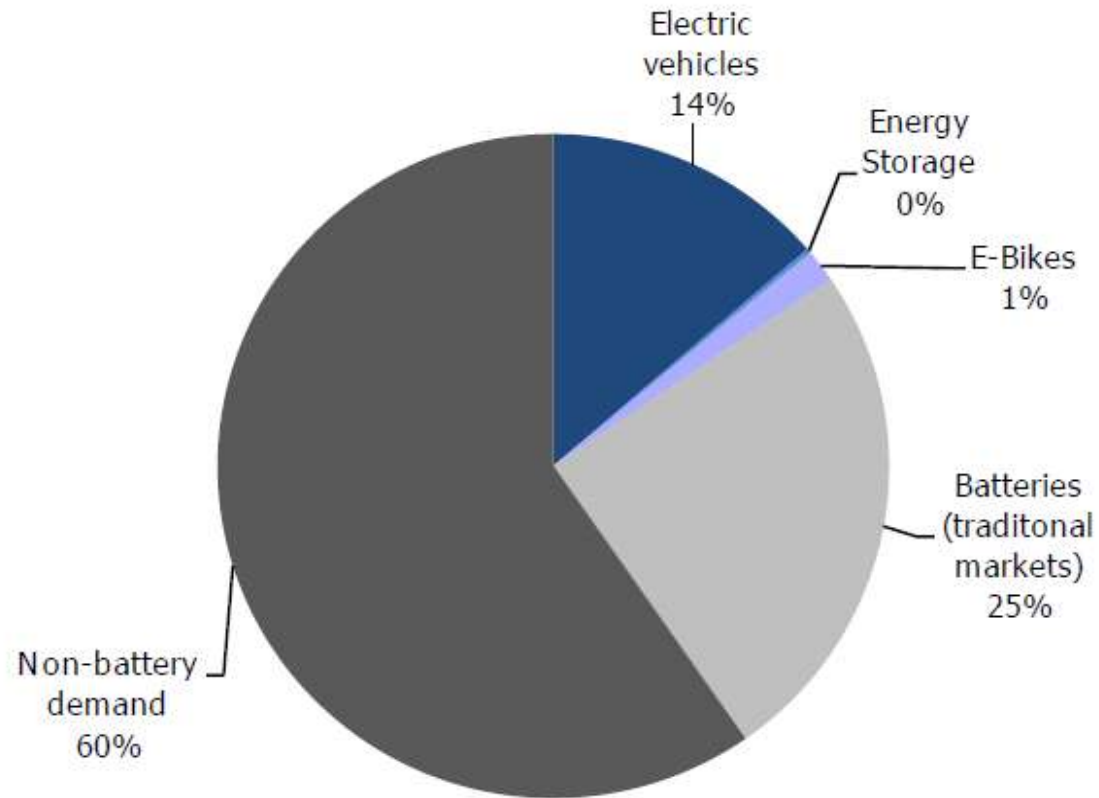
A wide-angle landscape photograph of a desert region. In the foreground, there are reddish-brown rock formations with some green shrubs. The middle ground shows a vast expanse of similar rock formations stretching towards the horizon. In the background, there are snow-capped mountains under a blue sky with scattered clouds. The text 'Thank You' is overlaid in the center of the image.

Thank You

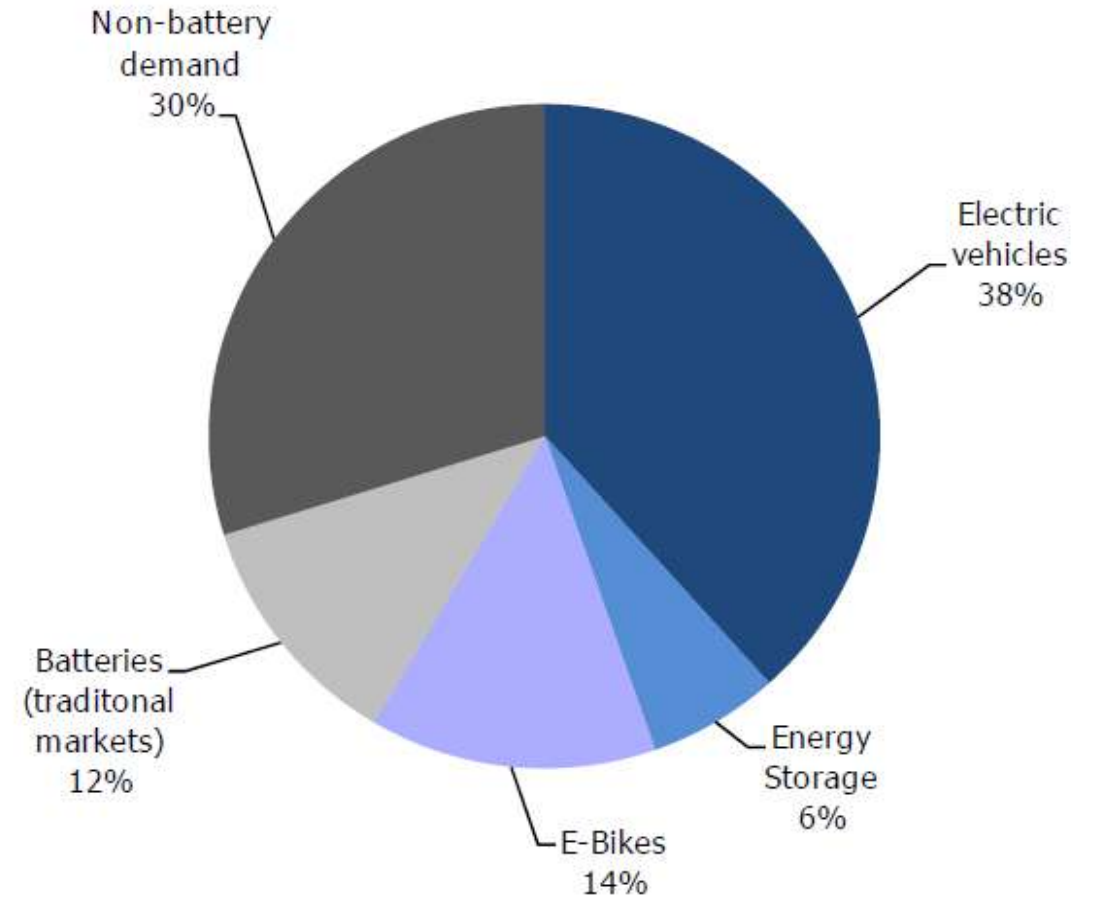




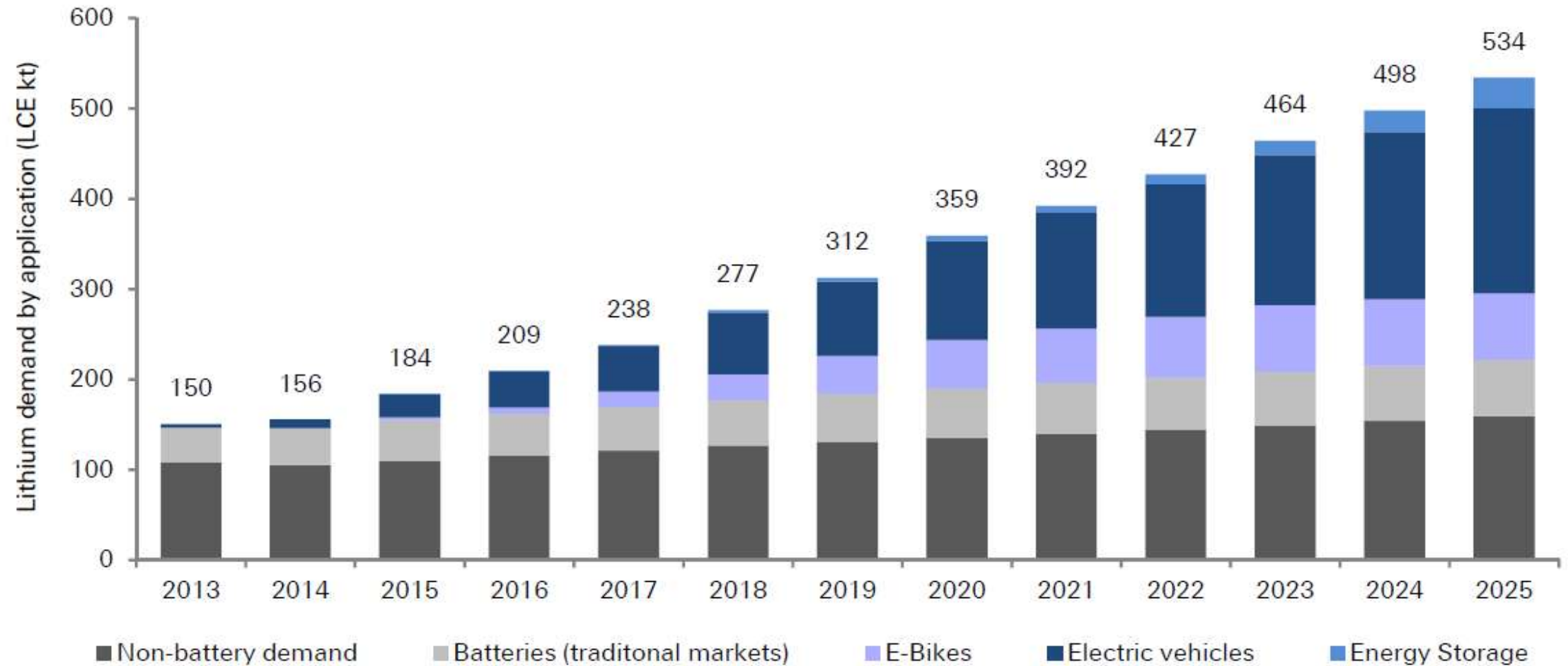
2015: Lithium demand by applications



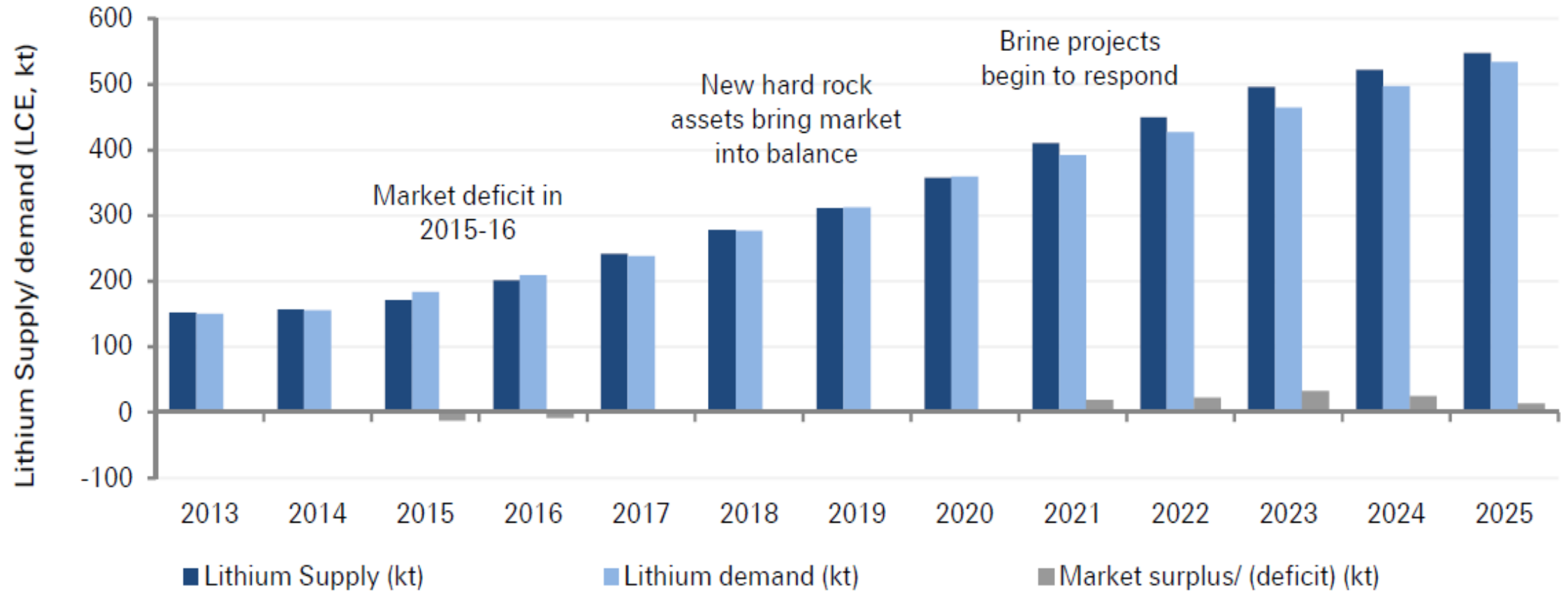
2025: Lithium demand by applications



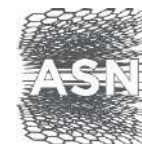
2016: Deutsche Bank



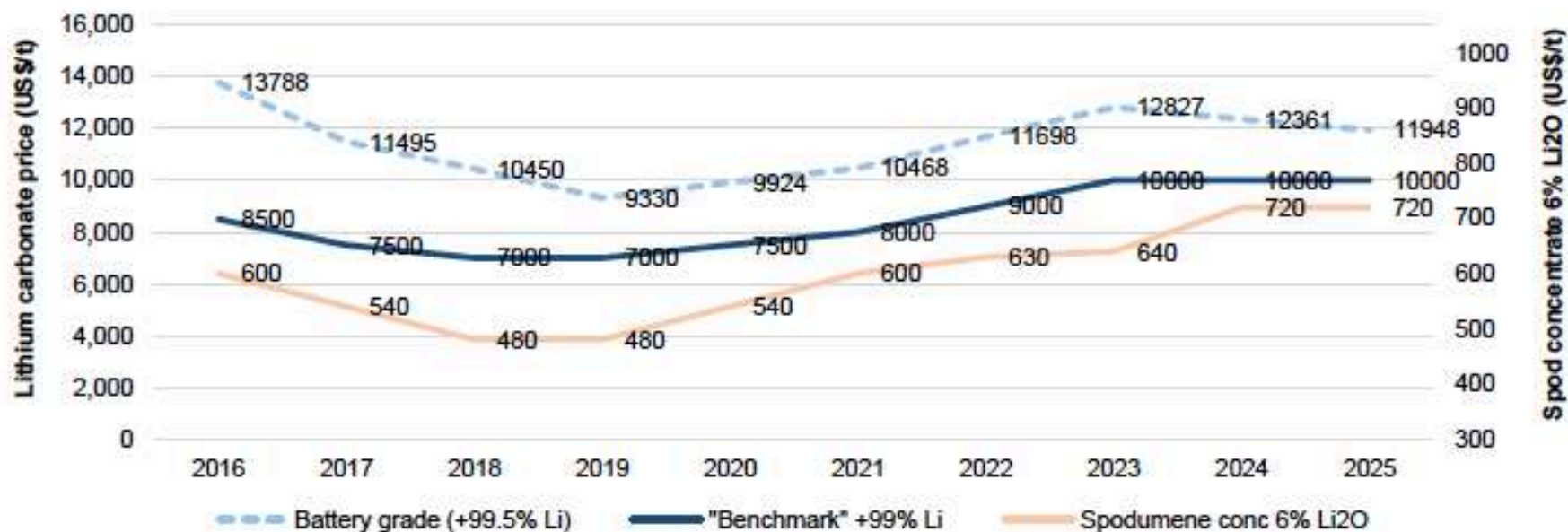
2016: Deutsche Bank



2016: Deutsche Bank



Pricing forecasts



Source: Canaccord Genuity estimates



	New Technology (Process Plant)	Traditional Processes (Evaporation Ponds)
Extraction Time	<24 hours	Up to 18 months
Scalability	Unconstrained	Limited
Purity	>99.9%	<99.5%
Recovery Rate	>90%	<50%
Reagents	Lime, sodium hydroxide	Lime, sodium hydroxide, hydrochloric acid, sodium carbonate
Footprint	Small	Large



Bruce Richardson
Managing Director

E:brichardson@ansonresources.com

T:+61 8 9226 0299

W:www.ansonresources.com

twitter.com/anson_ir

Linkedin.<https://www.linkedin.com/company/13357337/>