

### ASX ANNOUNCEMENT

Date: 18 September 2018

Number: 598/180918

## FURTHER HIGH GRADE MINERALISATION AND SECOND MASSIVE SULPHIDE UNIT CONFIRMED AT COMMONWEALTH

- Assays from the first four diamond drill holes at Main Shaft confirm significant extensions to near the surface, high grade massive sulphide unit both along trend and at depth:

Hole 084 has returned:

**5.7 metres at 3.8 g/t gold, 347 g/t silver, 10.8% zinc and 3.7% lead from 52.1 metres down hole; including 0.7 metres at 15.6 g/t gold, 245 g/t silver, 8.6% zinc and 1.9% lead; and 0.5 metres at 4.9 g/t gold, 917 g/t silver, 10.2% zinc and 4.6% lead from 56.9 metres.**

Hole 082 has returned:

**4 metres at 3.3 g/t gold 129 g/t silver, 7% zinc and 1.9% lead from 96.4 metres down hole; including 2.1 metres at 5.1 g/t gold, 239 g/t silver, 12.8% zinc and 3.5% lead.**

Hole 083 has returned:

**2.6 metres at 7.9 g/t gold, 164 g/t silver, 5.3% zinc and 3.1% lead from 96.9 metres down hole.**

Hole 085 has returned

**1.7 metres at 1.8 g/t gold 72 g/t silver 1.5% zinc 0.5% lead from 49.3 metres down hole in a historically poorly drilled area within 30 metres of surface.**

- In addition Hole 083 intersected a narrow high grade massive sulphide unit about 30 metres below the Main Shaft unit and confirms the discovery of a second massive sulphide unit that is at least 100 metres by 150 metres in dimension and is untested at depth.

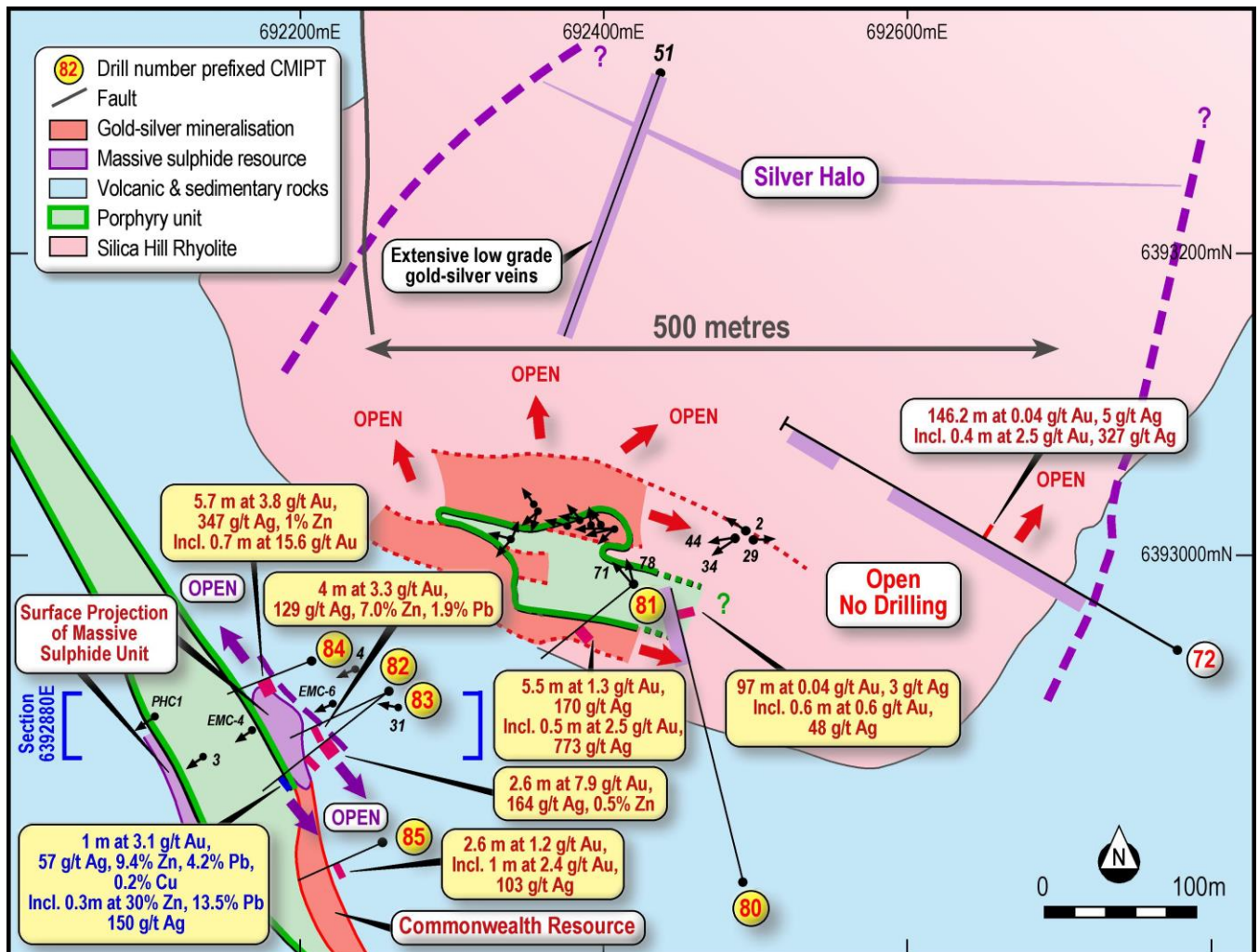
The second massive sulphide unit returned:

**1 metre at 3.1 g/t gold, 57 g/t silver, 9.4% zinc and 4.3% lead from 143 metres down hole; including 0.3 metres at 0.8 g/t gold, 150 g/t silver, 30.2% zinc and 13.6% lead.**

- Assays from two diamond drill holes at Silica Hill confirm extensions to gold and silver mineralisation for 200 metres to the east. Mineralisation open down plunge.
- Assays from two diamond holes at Commonwealth South still to be received.
- All data will be incorporated into a resource upgrade in Quarter 1 2019 with further drilling planned.
- Sale of Pilbara gold project to Pacton Gold Inc completed with receipt of remaining CAD\$325,000 cash and issue of 2,125,000 shares (current value \$750,000).

High grade assay results from the first six diamond drill holes completed at Impact Minerals Limited's (ASX:IPT) 100% owned Commonwealth Project located 100 km north of Orange in New South Wales, have confirmed significant extensions to the mineralisation at both the Main Shaft and Silica Hill Prospects and importantly have identified a second massive sulphide body below Main Shaft.

The mineralisation at both Prospects is still open along trend and at depth and further drilling is required. In addition an update to the resource model will be completed by Q1 2019.



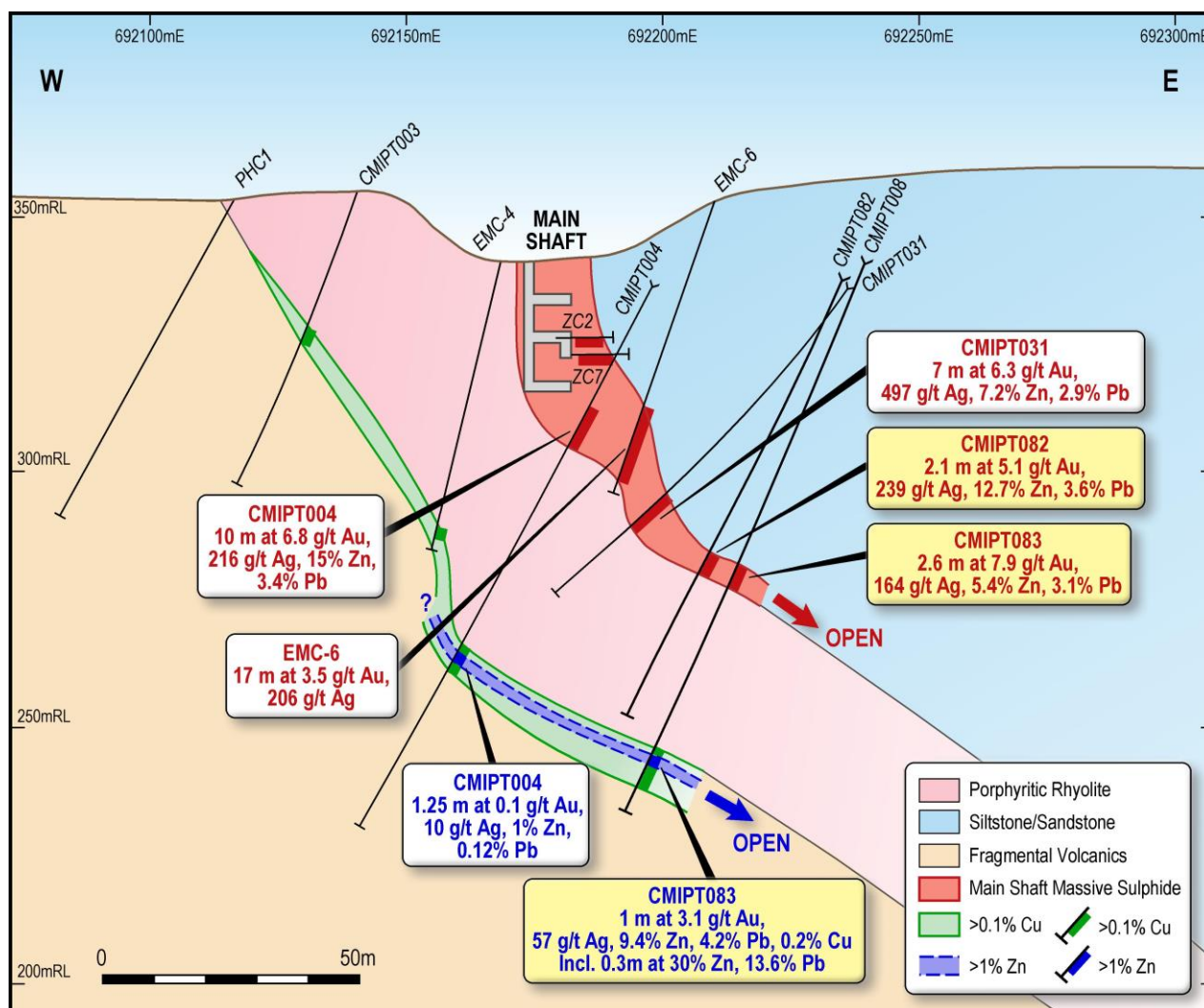
**Figure 1.** Location of new drill assays at Main Shaft and Silica Hill (yellow labels). The Main Shaft Prospect covers the area labelled “Massive Sulphide Resource”<sup>2</sup>. The Silica Hill Prospect is in the centre of the map.

## Main Shaft Massive Sulphide Unit

At **Main Shaft** four diamond drill holes were completed to test for extensions at depth and along trend from the previously identified gold and silver-rich massive sulphide lens<sup>1</sup>.

All four holes intersected varying widths of massive and/or semi-massive sulphide mineralisation at the upper eastern contact of the Commonwealth porphyry. The second massive sulphide unit, which was intersected in one hole in this programme, lies immediately below the lower western contact of the Commonwealth porphyry (Figures 1 and 2). The other 3 holes did not penetrate to the lower contact.

Drill hole locations are shown in Figure 1 and other details are given in the tables at the end of this report.



**Figure 2.** Cross section showing the upper and lower massive sulphide units at Main Shaft (see Figure 1 for section location). Both lenses are open at depth.

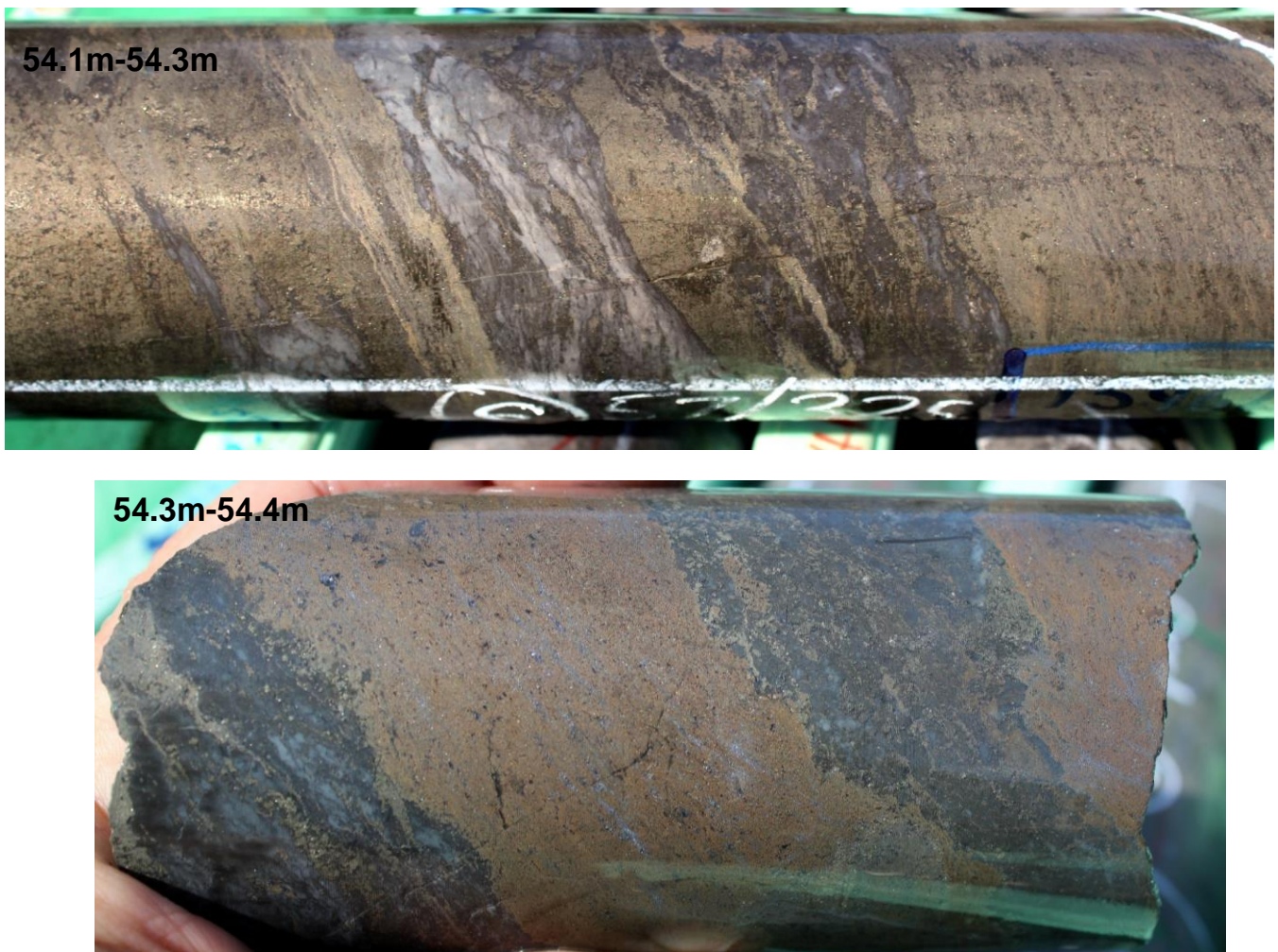


Hole **CMIPT084** was drilled 15 metres north of the massive sulphide lens<sup>2,3</sup> and intersected 5.7 metres true width of massive sulphide from 52.1 metres down hole at the hanging wall contact of the Commonwealth porphyry unit (Figures 1 and 2). Figure 3 shows the pyrite-rich and sphalerite-rich styles of mineralisation for comparison.

Hole 84 has returned:

**5.7 metres at 3.8 g/t gold, 347 g/t silver, 10.8% zinc and 3.7% lead from 52.1 metres down hole; including 0.7 metres at 15.6 g/t gold, 245 g/t silver, 8.6% zinc and 1.9% lead from 52.5 metres; and 0.5 metres at 4.9 g/t gold 917 g/t silver 10.2% zinc and 4.6% lead from 56.9 metres down hole.**

This has extended the massive sulphide lens at Main Shaft for 15 to 20 metres along trend to the north and importantly for any future mining operation, the mineralisation is within 30 metres of surface.



**Figure 3. Hole CMIPT084:** Photographs of end-member styles of massive sulphide mineralisation: massive pyrite (bronze colour) with fine grained sphalerite and galena (upper) and massive sphalerite (red-brown) with galena (silver grey) (lower). Similar styles of mineralisation occur in all four drill holes at Main Shaft.

Hole **CMIPT082** was drilled 20 metres down dip from previous high grade drill intercepts<sup>3</sup> and intersected two metres true width of semi-massive sulphide with surrounding disseminated sulphide (Figure 2).

Hole 082 has returned:

**4 metres at 3.3 g/t gold, 129 g/t silver, 7% zinc and 1.9% lead from 96.4 metres down hole; including 2.1 metres at 5.1 g/t gold, 239 g/t silver, 12.8% zinc and 3.5% lead from 98 m down hole.**

Hole **CMIPT083** was drilled 20 metres along trend from Hole 082 and intersected 2.6 metres true width of semi-massive sulphide.

Hole 083 has returned:

**2.6 metres at 7.9 g/t gold, 164 g/t silver, 5.3% zinc and 3.1% lead from 96.9 metres down hole.**

Importantly, these intercepts all indicate the upper massive sulphide unit at Main Shaft extends from surface to a depth of about 100 metres and is still open below and to the south (Figures 1 and 2).

Hole **CMIPT085** was drilled in an area of little drilling about 70 metres along trend to the south of the massive sulphide lens at Main Shaft (Figure 1). This hole intersected 1.5 metres true width of brecciated massive sulphide and is the first indication of massive sulphide in this area. This is encouraging as it suggests there is potential here for further near surface mineralisation.

Hole 085 has returned

**1.7 metres at 1.8 g/t gold, 72 g/t silver, 1.5% zinc and 0.5% lead from 49.3 metres down hole.**

## Second Massive Sulphide Unit

In addition to the intercept of the massive sulphide unit at Main Shaft, Hole CMIPT083 also intersected a 20 metre thick zone of alteration and patchy sulphide mineralisation from 130 metres down hole below the Commonwealth porphyry (Figure 2).

Within the zone is a one metre thick zone of brecciated massive sulphide comprised mostly of sphalerite with patches of chalcopyrite (Figure 4).



**Figure 4. Hole CMIPT083:** massive and brecciated massive sphalerite (red-brown) with lesser galena. Up to 3% chalcopyrite (yellow) is present in places.

In this zone Hole 083 returned:

**1 metre at 3.1 g/t gold, 57 g/t silver, 9.4% zinc, 4.3% lead and 0.3% copper from 143 metres down hole. This includes a narrow zone of massive high grade sphalerite which returned 0.3 metres at 0.8 g/t gold, 150 g/t silver, 30.2% zinc and 13.6% lead.**

The massive sulphide unit is the first confirmed presence of a high grade gold-rich massive sulphide unit below the Commonwealth porphyry. It occurs within a copper-rich mineralised horizon that is up to 50 metres thick and has been intersected in 12 previous drill holes.

The previous drill holes contain higher grade intercepts in places which are interpreted to be along-trend continuations of Hole 083.

For example Hole CMIPT006 returned 31 metres at 0.13% copper and 5 g/t silver including **1 metre at 1% copper, 1.1% zinc, 0.4% lead, 34 g/t silver and 0.4 g/t gold;** and Hole CMIPT050 returned 49 metres at 0.1% copper including **0.8 metres at 2.5% copper, 4% zinc, 0.5% lead, 39 g/t silver and 0.2 g/t gold.**<sup>2,3,4</sup>

The results suggest the massive sulphide unit is increasing in grade, gold content and potentially thickness with depth (Figure 2).

All of this indicates significant exploration potential for another thicker massive sulphide unit down plunge and below the level of current drilling (Figures 1 and 2).

## **Silica Hill**

At **Silica Hill** two diamond drill holes were completed to test down dip and along-trend extensions to the previously discovered high grade gold and silver mineralisation<sup>4,5</sup>.

Hole **CMIPT081** was drilled 65 metres along trend from previous high grade drill intercepts<sup>4,5</sup> and intersected an eight metre thick true width zone of disseminated and wispy bands of up to 20% pyrite in places from 202 metres down hole. A stronger mineralised zone about five metres thick was intersected from 212 metres down hole.

Hole 081 has returned:

**5.5 metres at 1.3 g/t gold and 170 g/t silver from 212 metres down hole including 0.5 metres at 2.5 g/t gold and 773 g/t silver.**

Hole **CMIPT080** was drilled 125 metres along trend from Hole 081 and intersected a 24 metre thick true width zone of patchy to pervasive silica-sericite-sulphide alteration with disseminated and narrow veins of pyrite with trace pathfinder metals arsenic, zinc and lead from 317 metres down hole. This includes a 0.5 metre thick quartz sulphide vein with visible silver minerals at 317.5 metres down hole.

Hole 080 returned a broad alteration zone of 93 metres at 0.04 g/t gold and 3 g/t silver with a narrow zone of 0.6 metres at 0.6 g/t gold and 48 g/t silver.

Both of these holes demonstrate a continuation of the Silica Hill mineralised system for at least 200 metres along trend. However the zone is narrower than previous drill holes to the west (Figure 1).

The mineralisation is open at depth, in particular to the west, and this is a key target for follow up drilling. The mineralisation at Silica Hill is still open in all directions and further deeper drilling is required.

## DISCUSSION AND NEXT STEPS

All of these results indicate the potential to increase the Inferred Resources at Commonwealth both for the overall resource, which extends from Main Shaft to Commonwealth South, and for the higher grade massive sulphide resource within it, at Main Shaft (Figure 1).

The Inferred Resource was prepared in accordance with the JORC 2012 Code by independent resource consultants Optiro<sup>2</sup>. At a 0.5 g/t gold cut off the entire Inferred Resource is:

**720,000 tonnes at 2.8 g/t gold, 48 g/t silver, 1.5% zinc, 0.6% lead and 0.1% copper.**

The resource extends from surface to an average depth of 90 metres, has a strike length of 400 metres and is up to 25 metres thick.

A separate Inferred Resource (included within the overall resource) was also calculated for the massive sulphide lens at Main Shaft alone to demonstrate the high grade nature of such deposits that are the principal target for Impact's exploration programme. The Main Shaft Inferred Resource is:

**145,000 tonnes at 4.3 g/t gold, 142 g/t silver, 4.8% zinc, 1.7% lead and 0.2% copper.**

Assays from two further drill holes completed at the Commonwealth South prospect, located 400 metres south of Main Shaft where previous drilling returned an intercept of **7 metres at 25.5 g/t gold, 62 g/t silver, 3.8% zinc and 1.6% lead** in Hole CMIPT017<sup>6</sup>, are expected within two weeks.

Upon receipt of the final assays a detailed synthesis and interpretation of all data collected will be commenced with a view to a resource upgrade by Q1 2019. This will include a maiden resource estimate for Silica Hill.

In addition further drilling is required at all prospects. Impact will look to drill these areas early in 2019.

## **COMPLETION OF SALE OF PILBARA GOLD PROJECT TO PACTON GOLD INC**

The Share Sale Agreement for sale of Impact's Pilbara gold project to Pacton Gold Incorporated as announced to the ASX on May 29<sup>th</sup> 2018 has now been Completed.

Under the terms of the Share Sale Agreement, Pacton has purchased a 100% ownership interest in Impact's wholly owned subsidiary Drummond East Pty Limited which holds seven 100% owned granted Exploration Licences in the Pilbara region of Western Australia (E45/4971-72-73; E46/1171-72; and E46/1188-89).

The total consideration paid by Pacton to Impact for the purchase was CAD\$350,000 and 2,125,000 common shares of Pacton. All funds have been received and the shares have now been issued to Impact with Drummond East Pty Limited now a wholly owned subsidiary of Pacton.

Impact is focusing its exploration for conglomerate-hosted gold at the Blackridge Project located 30 km north of Clermont in central Queensland where Impact has an option to acquire 95% of an advanced project with previous production of about 185,000 ounces of gold from small shafts and related underground workings.

In addition Impact has an adjacent 100% owned application for an Exploration Licence and together the project area covers 23 kilometres of strike and 37 square kilometres of prospective basal conglomerate of Permian age.

Further details on the production and previous exploration at Blackridge were reported to the ASX on May 29<sup>th</sup> 2018 and a review and synthesis of previous exploration data at Blackridge is on-going. Once complete, areas will be selected for detailed mapping and bulk sampling.

## **COMPLIANCE STATEMENT**

The new results presented here are Exploration Results comprising:

- Assays from six diamond drill holes, including four diamond drill holes from the Main Shaft Prospect and two diamond drill holes from the Silica Hill Prospect.

Further details on the new results can be found in the Appendix.

Previous Exploration Results and Mineral Resource Estimates have been reported to the ASX in a large number of announcements over the past few years. The significant announcements referred to and numbered in this report are:

1. 6 August 2018 – ASX Release “*Further massive sulphide mineralisation at Commonwealth, NSW*”
2. 19 February 2015 – ASX release “*Maiden high grade resource at Commonwealth, NSW.*”
3. 30 June 2016 – ASX release “*High grade extensions to the Commonwealth Deposit.*”
4. 28 March 2018 – ASX release “*Further evidence of large mineralised system at Silica Hill.*”
5. 13 February 2018 – ASX release “*High grade silver intersected at Silica Hill.*”
6. 22 September 2014 – ASX release “*Bonanza gold grades at Commonwealth South.*”

Details on these previous results can also be found in the Appendix.



Impact Minerals confirms that it is not aware of any new information or data that materially affects the information included in the previous market announcements referred to and in the case of Mineral Resource Estimates, that all material assumptions and technical parameters underpinning the estimates continue to apply and have not materially changed.

## Dr Michael G Jones

### Managing Director

*The review of exploration activities and results contained in this report is based on information compiled by Dr Mike Jones, a Member of the Australian Institute of Geoscientists. He is a director of the company and works for Impact Minerals Limited. He has sufficient experience which is relevant to the style of mineralisation and types of deposits under consideration and to the activity which he is undertaking to qualify as a Competent Person as defined in the 2012 edition of the Australasian Code for Reporting of Exploration Results, Mineral Resources and Ore Reserves (the JORC Code). Dr Jones has consented to the inclusion in the report of the matters based on his information in the form and context in which it appears.*

## DRILL HOLE DATA

Hole ID	Location	Easting MGA94	Northing MGA94	Azimuth (degrees magnetic)	Dip (degrees)	EOH (m)
CMIPT080	Silica Hill East	692495	6392786	334	55	367.7
CMIPT081	Silica Hill	692421	6392990	219	75	238.5
CMIPT082	Main Shaft	692247	6392917	231	58	133
CMIPT083	Main Shaft	692247	6392917	221	59	166.7
CMIPT084	Main Shaft	692203	6392931	239	50	74.2
CMIPT085	Main Shaft South	692246	63192810	234	49	104.6

## SIGNIFICANT INTERCEPTS REPORTED FOR THE FIRST TIME

Hole Id	From	To	Interval	Au	Ag	Zn	Pb	Cu	Cutoff
				g/t	g.t	ppm	ppm	ppm	
CMIPT081	212	217.5	5.5	1.27	169.7	1668	NSA	NSA	1 g/t Au Cutoff
including	214	214.35	0.35	0.31	408	1060	686	NSA	10 g/t Ag
including	216.16	216.7	0.54	2.49	773	5330	3870	466	10 g/t Ag
CMIPT082	96.4	100.35	3.95	3.27	129	70426	19127	2091	0.5 g/t AuEq
including	98	100.1	2.1	5.13	239	127762	35562	3363	5 g/t Au Cutoff
CMIPT083	96.91	99.5	2.59	7.93	164	53545	31306	5224	5 g/t Au Cutoff
and	131.2	136.4	5.2	1.17	16	2946	1023	NSA	0.5 g/t Au cut off
and also	143	144	1	3.12	57	94191	42729	2884	1 g/t Au Cutoff
including	143	143.3	0.3	0.83	150	302000	135500	8100	100 g/t Ag
also including	143.3	144	0.7	4.1	12	5130	2970	NSA	4 g/t Au Cutoff
CMIPT084	52.1	57.75	5.65	3.77	347	108176	37424	2386	1 g/t Au Cutoff
including	52.5	53.2	0.7	15.6	254	86700	19771	3121	10 g/t Au Cutoff
also including	56.85	57.3	0.45	4.88	917	102000	46200	3450	900 g/t Au Cutoff
CMIPT085	49.25	50.9	1.65	1.75	72	15103	4497	2679	1 g/t Au Cutoff

## APPENDIX 1 - SECTION 1 SAMPLING TECHNIQUES AND DATA

Criteria	JORC Code explanation	Commentary
Sampling techniques	<p><i>Nature and quality of sampling (e.g. cut channels, random chips, or specific specialised industry standard measurement tools appropriate to the minerals under investigation, such as down hole gamma sondes, or handheld XRF instruments, etc). These examples should not be taken as limiting the broad meaning of sampling.</i></p>	<p><b>Rock chip samples</b> Random grab samples were taken at surface which represented favourable geology and alteration to known mineralisation in the region. Samples are variably weathered.</p> <p><b>Soil Samples</b> About 250g of soil was taken from 15-20cm below surface and sieved to - 2mm size. Samples put in plastic snap seal bags. Samples were subsequently sieved to -250 micron at SGS Laboratories for assay by aqua regia digest.</p> <p><b>RC Drilling</b> Reverse Circulation (RC) percussion drilling was used to produce a 1m bulk sample (~25kg) which was collected in plastic bags and representative 1m split samples (12.5%, or nominally 3kg) were collected using a riffle splitter and placed in a calico bag. The cyclone was cleaned out with compressed air at the end of each hole and periodically during the drilling. Holes were drilled to optimally intercept interpreted mineralised zones.</p> <p><b>Diamond Drilling</b> Diamond drilling was used to produce drill core either with a diameter of 63.5 mm (HQ) or 47.6 mm (NQ).</p> <p><b>Hand-held XRF</b> Handheld XRF analysis was completed with a handheld Vanta M Series XRF 50KeV instrument at 50 cm and 1 m intervals on diamond core and for every metre for RC samples. For individual veins or samples that are specifically reported, several readings are taken to establish an average. Investors should note that the analyses are semi-quantitative and are a guide only to the metal content. Laboratory assays are used in preference where available.</p>
	<p><i>Include reference to measures taken to ensure sample representivity and the appropriate calibration of any measurement tools or systems used</i></p>	<p><b>Rock chip samples</b> Representative samples at each sample site weigh between 0.8 and 1.2 kg. Sample sites were chosen due to historic rock and soil assay results and the geophysical surveys conducted on the Commonwealth Project. Historic rock sample methods are unknown but are considered immaterial.</p> <p><b>Soil Samples and Drill Samples</b> Sample representivity was ensured by a combination of Company Procedures regarding quality control (QC) and quality assurance / testing (QA). Examples of QC include (but are not limited to), daily workplace and equipment inspections, as well as drilling and sampling procedures. Examples of QA include (but are not limited to) collection of “field duplicates”, the use of certified standards and blank samples approximately every 50 samples</p>

Criteria	JORC Code explanation	Commentary
	<p><i>Aspects of the determination of mineralisation that are Material to the Public Report. In cases where 'industry standard' work has been done this would be relatively simple (e.g. 'reverse circulation drilling was used to obtain 1 m samples from which 3 kg was pulverised to produce a 30 g charge for fire assay'). In other cases more explanation may be required, such as where there is coarse gold that has inherent sampling problems. Unusual commodities or mineralisation types (e.g. submarine nodules) may warrant disclosure of detailed information</i></p>	<p><b>Rock chip samples</b> Rock samples were sent to SGS Perth where they were crushed, dried and pulverised (total prep) to produce a 25-30 g sub-samples for analysis initially by Aqua Regia digest with ICP-MS finish for base metals then by four acid digest with an ICP/AES finish for ore grade base metal samples and lead collection fire assay with AAS finish for gold.</p> <p><b>Soil Samples</b> Soil samples were sent to ACME Laboratories in Vancouver for analysis by aqua regia digest or to SGS Laboratories in Perth for analysis by the MMI digest.</p> <p><b>RC and diamond drill samples</b> RC samples and cut samples of core were submitted to ALS in Orange, NSW. Laboratory sample preparation involved: sample crushed to 70% less than 2mm, riffle/rotary split off 1 kg, pulverise split to &gt;85% passing 75 microns. RC samples analysed by MEICP41 or MEOG46 for ore grade samples, aqua regia digest with ICP OES analysis and AA24 fire assay with AAS finish. Historical diamond and RC samples were sent to Fox Anamet, Brookvale NSW where gold was determined by fire assay, base metals by DCP and AAS methods. Weathered samples contained gossanous sulphide material and fresh samples containing visible pyrite, galena, sphalerite and chalcopyrite.</p>
<b>Drilling techniques</b>	<p><i>Drill type (e.g. core, reverse circulation, open-hole hammer, rotary air blast, auger, Bangka, sonic, etc) and details (e.g. core diameter, triple or standard tube, depth of diamond tails, face-sampling bit or other type, whether core is oriented and if so, by what method, etc).</i></p>	<p>Diamond drilling accounts for about 50 % of the drilling and comprises NQ (47.6 mm diameter) and HQ (63.5 mm diameter) sized core. Impact diamond core is mostly triple tube and is oriented. Historical diamond core was not oriented. RC drilling accounts for about 50% of the drilling and comprises 4 inch hammer.</p>
<b>Drill sample recovery</b>	<p><i>Method of recording and assessing core and chip sample recoveries and results assessed</i></p> <hr/> <p><i>Measures taken to maximise sample recovery and ensure representative nature of the samples</i></p> <hr/> <p><i>Whether a relationship exists between sample recovery and grade and whether sample bias may have occurred due to preferential loss/gain of fine/coarse material.</i></p>	<p>Diamond core recoveries for all holes are logged and recorded. Recoveries are estimated to be approximately &gt;97% for the Commonwealth Project. No significant core loss or sample recovery problems are observed in the drill core or historic reports. RC samples were visually checked for recovery, moisture and contamination.</p> <hr/> <p>Diamond core is reconstructed into continuous runs on an angle iron cradle for orientation marking. Depths are checked against the depth given on the core blocks and rod counts are routinely carried out by the driller. The RC samples are collected by plastic bag directly from the rig-mounted cyclone and laid directly on the ground in rows of 10. The drill cyclone and sample buckets are cleaned between rod-changes and after each hole to minimise down-hole and/or cross contamination.</p> <hr/> <p>No sample bias has been established.</p>
<b>Logging</b>	<p><i>Whether core and chip samples have been geologically and geotechnically logged to a level of detail to support appropriate Mineral Resource estimation, mining studies and metallurgical studies.</i></p>	<p>Geological logging of samples followed company and industry common practice. Qualitative logging of samples included (but not limited to); lithology, mineralogy, alteration, veining and weathering. Diamond core logging included additional fields such as structure and geotechnical parameters. Magnetic Susceptibility measurements were taken for each 1m RC sample and each 1m diamond core interval. For diamond core, information on structure type, dip, dip direction, texture, shape and fill material has been recorded in the logs. RQD data has been recorded on selected diamond holes.</p>

Criteria	JORC Code explanation	Commentary
	<i>Whether logging is qualitative or quantitative in nature. Core (or costean, channel, etc) photography.</i>	All logging is quantitative, based on visual field estimates. Systematic photography of the diamond core in the wet and dry form was completed. Chip trays with representative 1m RC samples were collected and photographed then stored for future reference.
	<i>The total length and percentage of the relevant intersections logged</i>	All diamond drill holes were logged in full. All RC chips samples were geologically logged by Impact's on-site geologist on a 1m basis, with digital capture in the field. Detailed diamond core logging, with digital capture was conducted for 100% of the core by Impact's on-site geologist.
<b>Sub-sampling techniques and sample preparation</b>	<i>If core, whether cut or sawn and whether quarter, half or all core taken.</i>	All core samples were sampled by half core. Selected intervals of quarter core will be selected for check assays if required.
	<i>If non-core, whether riffled, tube sampled, rotary split, etc and whether sampled wet or dry.</i>	RC samples were split using a riffle splitter.
	<i>For all sample types, the nature, quality and appropriateness of the sample preparation technique.</i>	Company procedures were followed to ensure sub-sampling adequacy and consistency. These included (but were not limited to), daily work place inspections of sampling equipment and practices, as well as sub-sample duplicates ("field duplicates").
	<i>Quality control procedures adopted for all sub-sampling stages to maximise representivity of samples.</i>	Laboratory QC procedures for rock sample assays involve the use of internal certified reference material as assay standards, along with blanks, duplicates and replicates. The QC procedure for historical diamond and RC samples is unknown but considered immaterial.
	<i>Measures taken to ensure that the sampling is representative of the in situ material collected, including for instance results for field duplicate/second-half sampling.</i>	Sample duplicates from the historical drilling were taken from selected intervals and compared to the original assay. Quarter core was taken for diamond samples and riffle re-splits for RC samples.
	<i>Whether sample sizes are appropriate to the grain size of the material being sampled.</i>	The samples sizes at Commonwealth are considered appropriate since gold has been identified as predominantly fine-grained by thin section analysis which would indicate the nugget effect is minimal.
<b>Quality of assay data and laboratory tests</b>	<i>The nature, quality and appropriateness of the assaying and laboratory procedures used and whether the technique is considered partial or total.</i>	An industry standard fire assay technique for samples using lead collection with an Atomic Absorption Spectrometry (AAS) finish was used for gold and aqua regia digest for base metals and silver. The quality of historical drill sample assays is unknown, however this is considered immaterial at this stage of exploration.
	<i>For geophysical tools, spectrometers, handheld XRF instruments, etc, the parameters used in determining the analysis including instrument make and model, reading times, calibrations factors applied and their derivation, etc.</i>	No geophysical tools were used to determine material element concentrations. A handheld Vanta M Series XRF 50KeV instrument was used for semi-quantitative analysis only. The sampling interval was two times 20 second intervals. Calibration is carried out at the start of the sampling procedure each time the machine is turned on and appropriate standards are used every 25 <sup>th</sup> sample. Elements analysed include:Ag, As, Ba, Se, Ca, K, S, Sb, Sn, Cd, Sr, Rb, Pb, Hg, W, Cu, Ni, Co, V, Ti, Fe, Mn, P, Cr, Mo, U and Ta.
	<i>Nature of quality control procedures adopted (e.g. standards, blanks, duplicates, external laboratory checks) and whether acceptable levels of accuracy (i.e. lack of bias) and precision have been established.</i>	For the rock chips, quality control procedures for assays were followed via internal laboratory protocols. Accuracy and precision are within acceptable limits. The quality control of historical drill sample assays is unknown, however this is considered immaterial at this stage of exploration.
<b>Verification of sampling and assaying</b>	<i>The verification of significant intersections by either independent or alternative company personnel.</i>	Significant intersections from drilling have not been verified by independent or alternative companies. This is not required at this stage of exploration.



Criteria	JORC Code explanation	Commentary
	<i>The use of twinned holes.</i>	Two twin diamond holes versus historic RC holes have been drilled at Commonwealth South and Main Shaft.
	<i>Documentation of primary data, data entry procedures, data verification, data storage (physical and electronic) protocols.</i>	Primary assay data for rock chips has been entered into standard Excel templates for plotting in Mapinfo and Target. All historical drill data has been entered digitally by previous explorers and verified internally by Impact.
	<i>Discuss any adjustment to assay data.</i>	No significant adjustments have been required.
<b>Location of data points</b>	<i>Accuracy and quality of surveys used to locate drill holes (collar and down-hole surveys), trenches, mine workings and other locations used in Mineral Resource estimation.</i>	Recent drill holes have been located by DGPS. Historical drill holes and mine shafts have been verified by DGPS.
	<i>Specification of the grid system used.</i>	The grid system for Commonwealth is MGA_GDA94, Zone 55.
	<i>Quality and adequacy of topographic control.</i>	Standard government topographic maps have been used for topographic validation. The DGPS is considered sufficiently accurate for elevation data. For the diamond holes, down-hole single shot surveys were conducted by the drilling contractor. Surveys were conducted at 6m, 18, 30m and then approximately every 30m down-hole. For the RC drill holes, down hole dip surveys were taken at approximately 30m intervals and at the bottom of the hole.
<b>Data spacing and distribution</b>	<i>Data spacing for reporting of Exploration Results.</i>	Drill spacing of drill holes ranges between 10 and 30 m which is considered adequate for Exploration Results.
	<i>Whether the data spacing and distribution is sufficient to establish the degree of geological and grade continuity appropriate for the Mineral Resource and Ore Reserve estimation procedure(s) and classifications applied.</i>	Drill spacing of drill holes ranges between 10 and 50 m and may be considered adequate for Mineral Resource and Ore reserve estimation procedures. However estimations of grade and tonnes have not yet been made.
	<i>Whether sample compositing has been applied.</i>	Sample compositing has been applied for quoting drill composite results only.
<b>Orientation of data in relation to geological structure</b>	<i>Whether the orientation of sampling achieves unbiased sampling of possible structures and the extent to which this is known, considering the deposit type.</i>	Drilling is oriented sub-perpendicular to the mineralised trend and stratigraphic contacts as determined by field data and cross section interpretation.
	<i>If the relationship between the drilling orientation and the orientation of key mineralised structures is considered to have introduced a sampling bias, this should be assessed and reported if material.</i>	No significant sample bias has been identified from drilling due to the optimum drill orientation described above. Where present, sample bias will be reported.
<b>Sample security</b>	<i>The measures taken to ensure sample security.</i>	For rock samples, chain of custody is managed by Impact Minerals Ltd. Samples for Commonwealth are delivered by Impact Minerals Ltd personnel to ALS in Orange, NSW or to SGS Perth for prep and assay. Whilst in storage, they are kept in a locked yard. Tracking sheets have been set up to track the progress of batches of samples. Security of historic drill samples is unknown however is considered immaterial.
<b>Audits or reviews</b>	<i>The results of any audits or reviews of sampling techniques and data.</i>	A review of the sampling techniques and data both of historic drill holes and of Impact's procedures has been completed by Optiro Consultants of Perth, WA.

## SECTION 2 REPORTING OF EXPLORATION RESULTS

Criteria	JORC Code explanation	Commentary
Mineral tenement and land tenure status	Type, reference name/number, location and ownership including agreements or material issues with third parties such as joint ventures, partnerships, overriding royalties, native title interests, historical sites, wilderness or national park and environmental settings.	The Commonwealth Project currently comprises 3 exploration licences covering 315 km². The tenements are held 100% by Endeavour Minerals Pty Ltd, a subsidiary company of Impact Minerals Limited. No aboriginal sites or places have been declared or recorded in areas where Impact is currently exploring. There are no national parks over the license area.
	The security of the tenure held at the time of reporting along with any known impediments to obtaining a licence to operate in the area.	The tenements are in good standing with no known impediments.
Exploration done by other parties	Acknowledgment and appraisal of exploration by other parties.	A total of 66 drill holes have been completed over 300 m strike between the Commonwealth main shaft and Commonwealth South by previous explorers to an average depth of 53 m.
Geology	Deposit type, geological setting and style of mineralisation.	The Commonwealth and Commonwealth South deposits are considered gold-rich volcanic hosted massive sulphide (VMS) deposits that occur at and below the contact with a porphyritic rhyolite and overlying volcanic sedimentary rocks. The mineralisation may have been overprinted by epithermal mineralisation.
Drill hole Information	<p>A summary of all information material to the understanding of the exploration results including a tabulation of the following information for all Material drill holes:</p> <ul style="list-style-type: none"><li>• easting and northing of the drill hole collar</li><li>• elevation or RL (Reduced Level – elevation above sea level in metres) of the drill hole collar</li><li>• dip and azimuth of the hole</li><li>• down hole length and interception depth</li><li>• hole length.</li></ul>	See Table in text.
Data aggregation methods	In reporting Exploration Results, weighting averaging techniques, maximum and/or minimum grade truncations (e.g. cutting of high grades) and cut-off grades are usually Material and should be stated.	All reported assays have been length weighted. No top cuts have been applied. A nominal cut-off of approximately 0.5 g/t Au has been applied.
	Where aggregate intercepts incorporate short lengths of high grade results and longer lengths of low grade results, the procedure used for such aggregation should be stated and some typical examples of such aggregations should be shown in detail.	High grade massive sulphide intervals internal to broader zones of disseminated sulphide mineralisation are reported as included intervals.
	The assumptions used for any reporting of metal equivalent values should be clearly stated.	Gold equivalent values have been used in the long section. Metal prices used for the gold equivalent were \$1,650 for gold and \$30 for silver. Given the high grade results, it is assumed that very high recoveries will be achieved. However no metallurgical studies have been completed to verify this. Such studies will be done as and when appropriate.

Criteria	JORC Code explanation	Commentary
<b>Relationship between mineralisation widths and intercept lengths</b>	<p>These relationships are particularly important in the reporting of Exploration Results.</p> <p>If the geometry of the mineralisation with respect to the drill hole angle is known, its nature should be reported.</p> <p>If it is not known and only the down hole lengths are reported, there should be a clear statement to this effect (e.g. 'down hole length, true width not known').</p>	The majority of previous and current drill holes to date have been sub-perpendicular to the mineralised trend and stratigraphy so intervals are close to true width or otherwise stated.
<b>Diagrams</b>	<p>Appropriate maps and sections (with scales) and tabulations of intercepts should be included for any significant discovery being reported These should include, but not be limited to a plan view of drill hole collar locations and appropriate sectional views.</p>	Refer to Figures in body of text.
<b>Balanced reporting</b>	<p>Where comprehensive reporting of all Exploration Results is not practicable, representative reporting of both low and high grades and/or widths should be practiced to avoid misleading reporting of Exploration Results.</p>	All results reported are representative
<b>Other substantive exploration data</b>	<p>Other exploration data, if meaningful and material, should be reported including (but not limited to): geological observations; geophysical survey results; geochemical survey results; bulk samples – size and method of treatment; metallurgical test results; bulk density, groundwater, geotechnical and rock characteristics; potential deleterious or contaminating substances.</p>	Assessment of other substantive exploration data is not yet complete however considered immaterial at this stage.
<b>Further work</b>	<p>The nature and scale of planned further work (e.g. tests for lateral extensions or depth extensions or large-scale step-out drilling). Diagrams clearly highlighting the areas of possible extensions, including the main geological interpretations and future drilling areas, provided this information is not commercially sensitive</p>	Follow up work programmes will be subject to interpretation of recent and historic results which is ongoing.