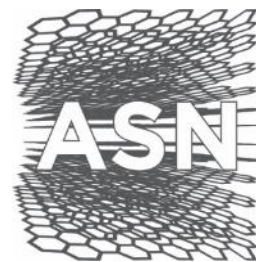


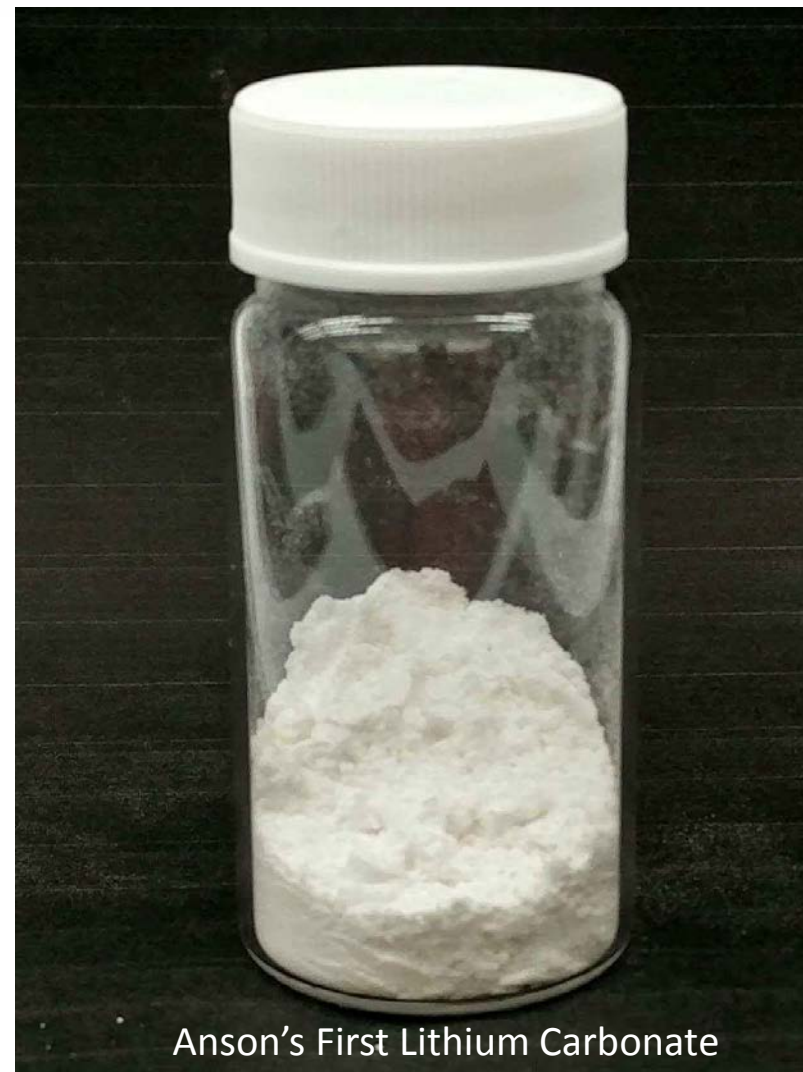
# Paradox Lithium Project: Fast Tracking to Production

---

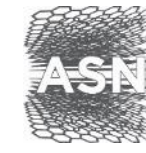
28 August 2018  
Presentation  
Argus LiCoNi 2018  
Singapore



Anson Resources Ltd



Anson's First Lithium Carbonate



The information contained in this confidential document ("Presentation") has been prepared by Anson Resources Limited (the "Company"). It has not been fully verified and is subject to material updating, revision and further amendment. The Information may not be distributed to others at any time without the prior written consent of the Company (including the presentation) any copies thereof, and will destroy all analysis, complications and other documents or writings whatsoever containing or reflecting any such material.

While the information contained herein has been prepared in good faith, neither the Company nor any of its shareholders, directors, officers, agents, employees or advisers give, have given or have authority to give, any representations or warranties (express or implied) as to, or in relation to, the accuracy, reliability or completeness of the information in this Presentation, or any revision thereof, or of any other written or oral information made or to be made available to any interested party or its advisers (all such information being referred to as "Information") and liability therefore is expressly disclaimed. Accordingly, neither the Company nor any of its shareholders, directors, officers, agents, employees or advisers take any responsibility for, or will accept any liability whether direct or indirect, express or implied, contractual, tortious, statutory or otherwise, in respect of, the accuracy or completeness of the Information or for any of the opinions contained herein or for any errors, omissions or misstatements or for any loss, howsoever arising, from the use of this Presentation.

Neither the issue of this Presentation nor any part of its contents is to be taken as any form of commitment on the part of the Company to proceed with any transaction and the right is reserved to terminate any discussions or negotiations with any prospective investors. In no circumstances will the Company be responsible for any costs, losses or expenses incurred in connection with any appraisal or investigation of the Company. In furnishing this Presentation, the Company does not undertake or agree to any obligation to provide the recipient with access to any additional information or to update this Presentation or to correct any inaccuracies in, or omissions from, this Presentation which may become apparent.

This Presentation should not be considered as the giving of investment advice by the Company or any of its shareholders, directors, officers, agents, employees or advisers. Each party to whom this Presentation is made available must make its own independent assessment of the Company after making such investigations and taking such advice as may be deemed necessary. In particular, any estimates or projections or opinions contained herein necessarily involve significant elements of subjective judgment, analysis and assumptions and each recipient should satisfy itself in relation to such matters.

This Presentation includes certain statements that may be deemed "forward-looking statements". All statements in this discussion, other than statements of historical facts, that address future activities and events or developments that the Company expects, are forward-looking statements. Although the Company believes the expectations expressed in such forward-looking statements are based on reasonable assumptions, such statements are not guarantees of future performance and actual results or developments may differ materially from those in the forward-looking statements. Factors that could cause actual results to differ materially from those in forward-looking statements include market prices, continued availability of capital and financing, and general economic, market or business conditions. Investors are cautioned that any such statements are not guarantees of future performance and that actual results or developments may differ materially from those projected in forward-looking statements.

**Competent Person's Statement** The information in this announcement that relates to exploration results and geology is based on information compiled and/or reviewed by Mr Greg Knox, a member in good standing of the Australasian Institute of Mining and Metallurgy. Mr Knox is a geologist who has sufficient experience which is relevant to the style of mineralisation under consideration and to the activity being undertaken to qualify as a "Competent Person", as defined in the 2012 Edition of the Australasian Code for Reporting of Exploration Results, Mineral Resources and Ore Reserves and consents to the inclusion in this report of the matters based on information in the form and context in which they appear. Mr Knox is a director of Anson and a consultant to Anson.



**Bruce McLeod, B.Sc. (Maths),  
M.Com (Econ) - Non Exec Chairman**

- Experienced public company director
- >25 years experience in the Australian capital markets
- Corporate funding experience in resources and property industries
- Extensive experience in the takeover and rationalisation of companies



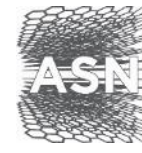
**Bruce Richardson, B.A (Hons) -  
Managing Director**

- Proven track record of 9 years in exploration, mining and production in public and private companies
- >30 years of international business experience, particularly China
- In the past few years has raised over \$170 million dollars of investment in mining projects

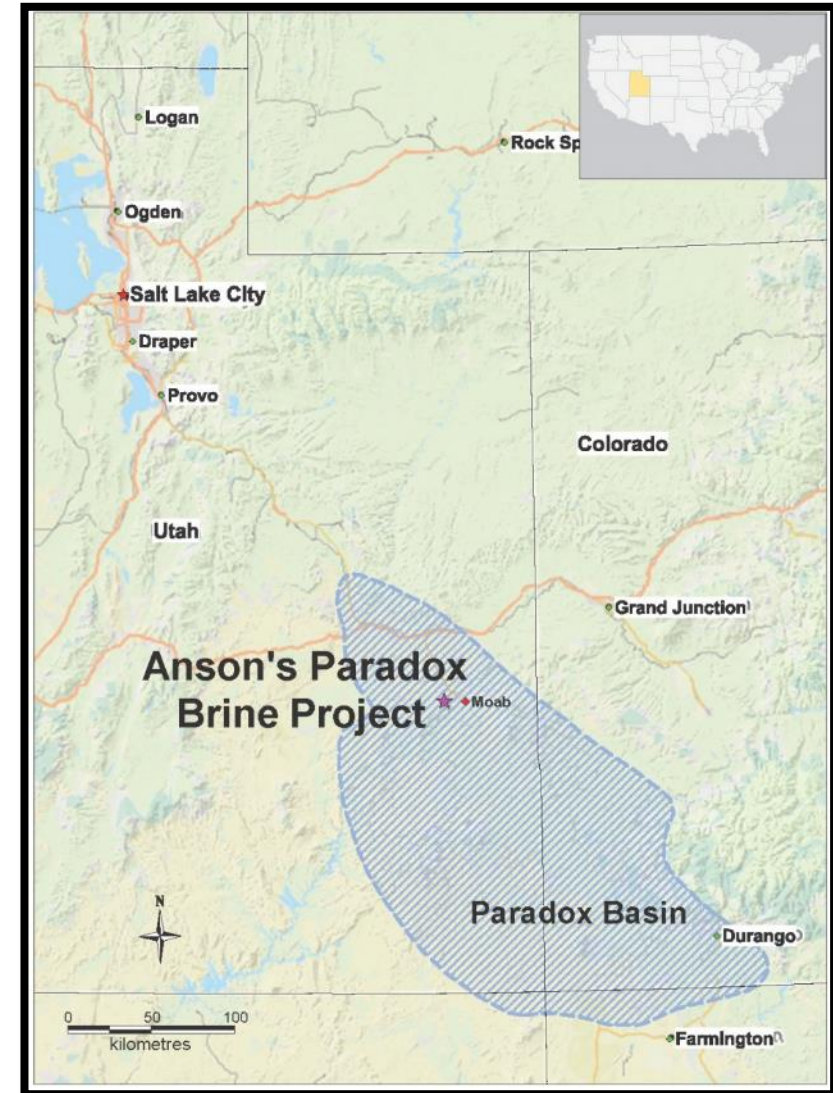


**Peter (Greg) Knox B.Sc. (Geology) – Non  
Executive Director**

- Mr Knox is a qualified geologist with over 30 years of experience in exploration, mine development and mining operations
- He has worked on projects from grass-roots exploration through to mine development and production



- Multiple exploration companies in the 4 corners “New Lithium Province”: Moab, Utah, USA – long history of mining
- Brines known to exist throughout the Paradox Basin which covers an area 33,000 square miles (85,470km<sup>2</sup>)
- Historical records indicate presence of lithium





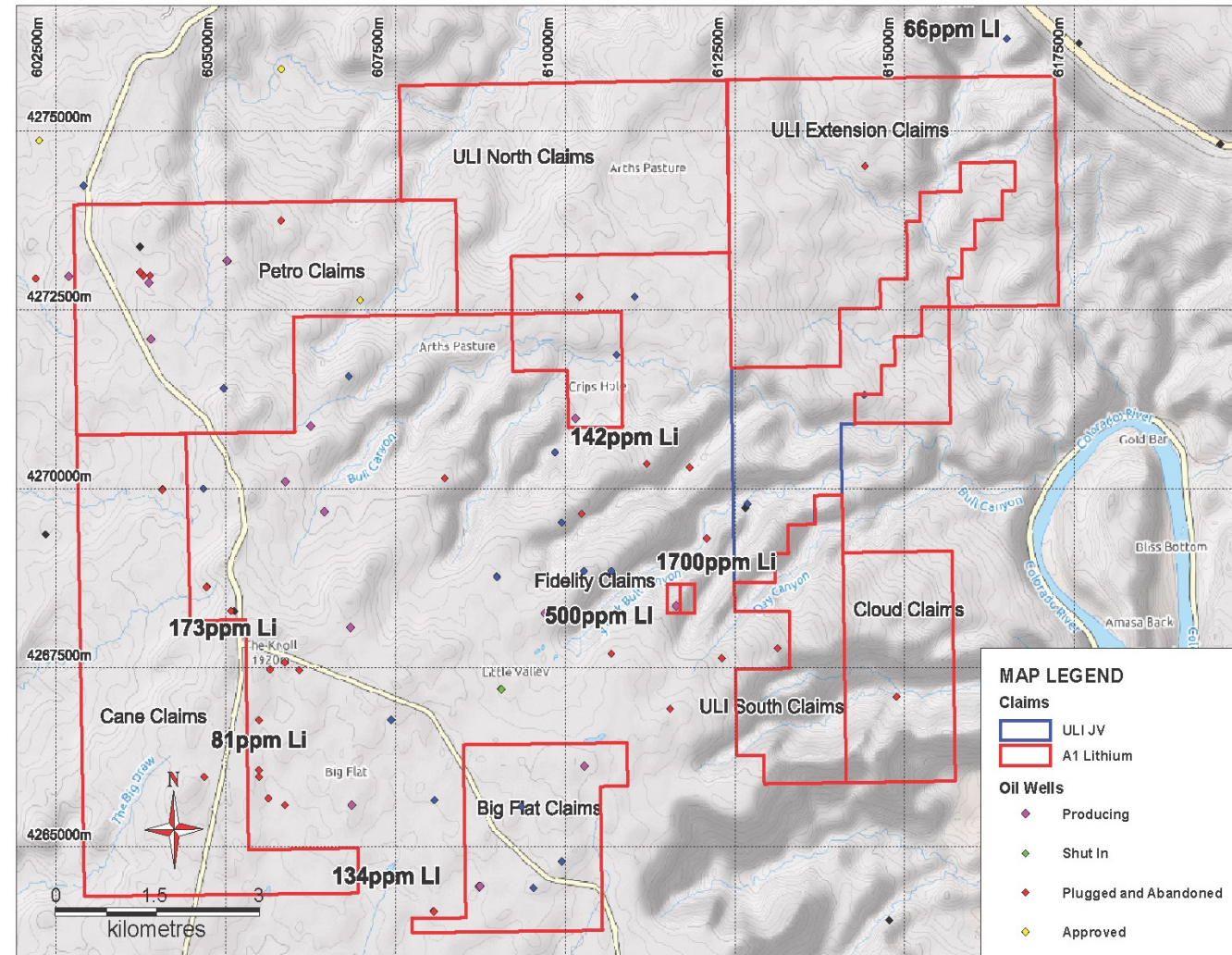
## Prime Area and Location

- Total project area 893 claims covering 8,773 hectares of land.
- Purchased oil/gas lease and well at Cane Creek 32-1
- Applied for industrial lease at Cane Creek
- Estimated an exploration target of between 65M tonnes (311 million barrels) and 130M tonnes (622 million barrels).

Area m <sup>2</sup>	Thickness	Porosity %	Volume m <sup>3</sup>	Density	Brine Barrels
81,000,000	10 feet	20.0	50,000,000	1.3	311,000,000
81,000,000	20 feet	20.0	100,000,000	1.3	622,000,000

### Estimated exploration target calculation\*

\*Refer ASX release dated 16 May 2018. The Exploration Target is conceptual in nature as there has been insufficient exploration undertaken on the project to name a Mineral Resource. It is uncertain that future exploration will result in a Mineral Resource.



- **Location**

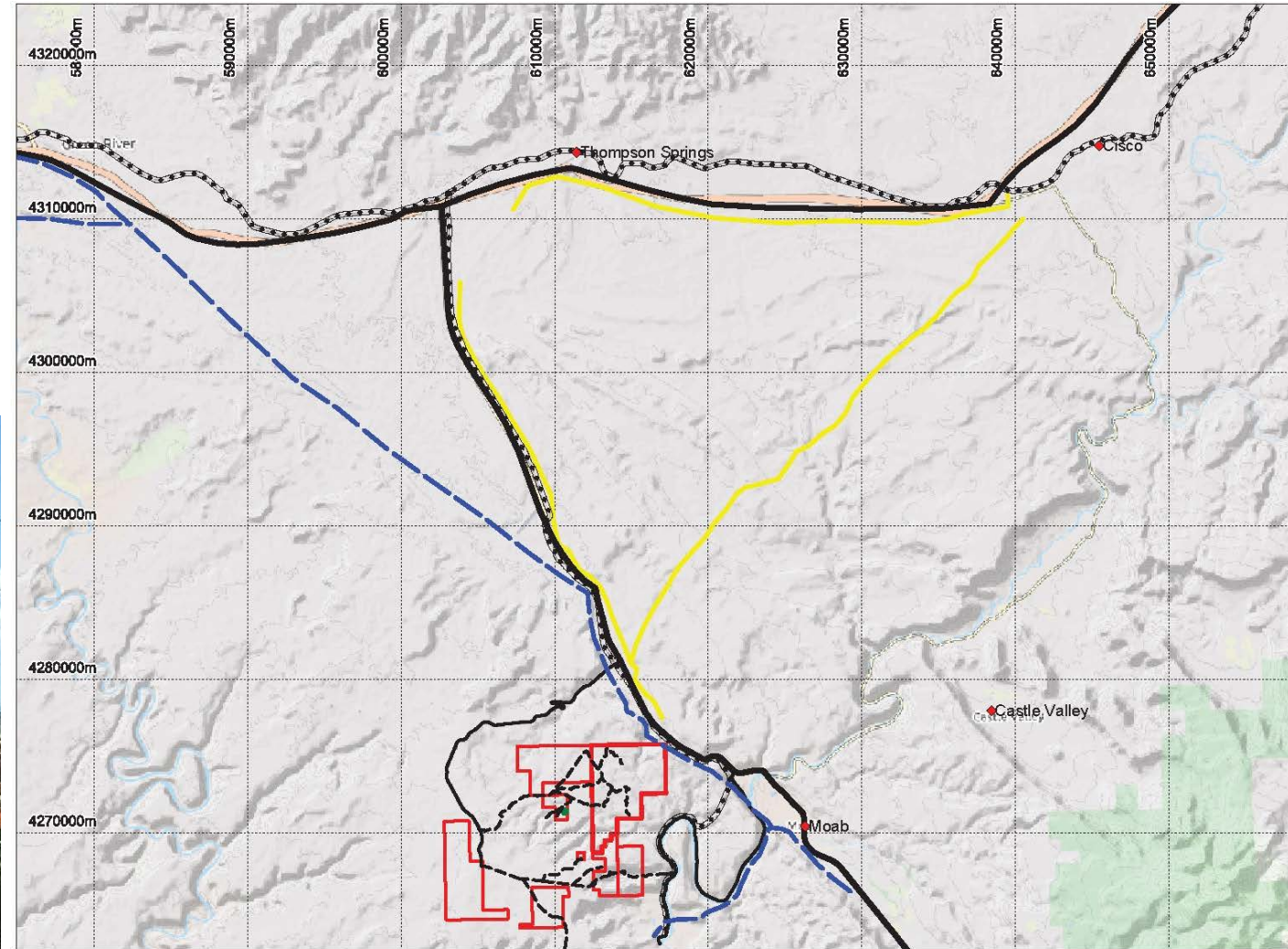
- Utah, USA well regulated and managed operating environment
- Tesla Gigafactory 11 hour drive
- Close to market
- 15 km west of Moab providing a mining support service





## Existing Infrastructure

- Close proximity to key infrastructure:
  - Interstate Highway
  - Railway
  - Power Line
  - Gas Line



## Artesian Flow

- Comes to surface under own pressure
- 2000+ psi at surface
- Temperature at surface 40 degrees
- Assists in processing

## Highly Concentrated Supersaturated Brine

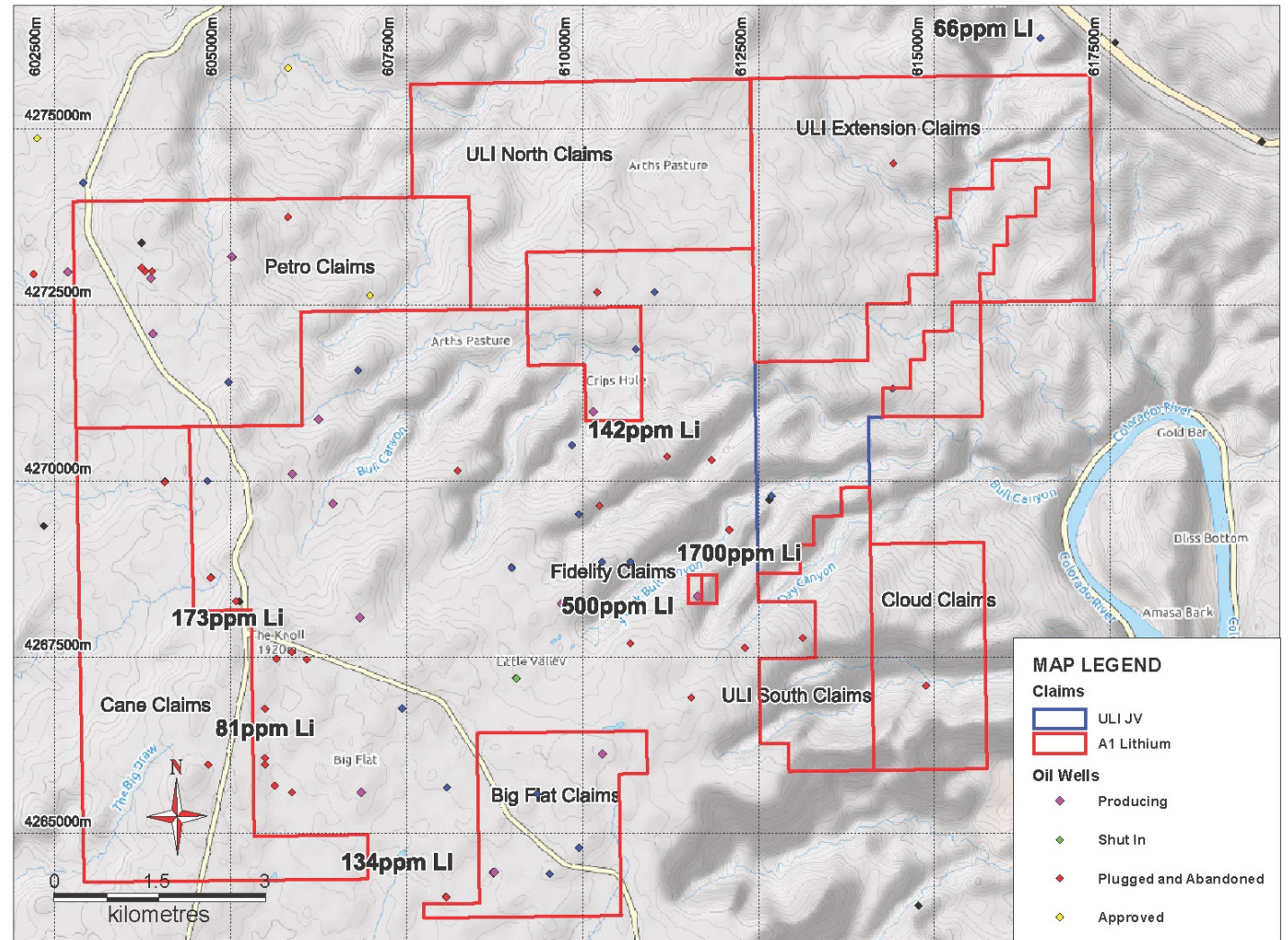
- High concentrations of Bromine, Iodine and Magnesium
- Lithium and Boron concentration increase significantly with simple evaporation
- Sodium and Potassium decrease significantly with simple evaporation
- Magnesium precipitated within 2 hours





## JORC Report Being Prepared

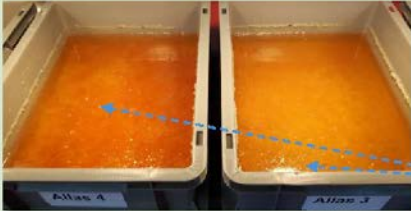
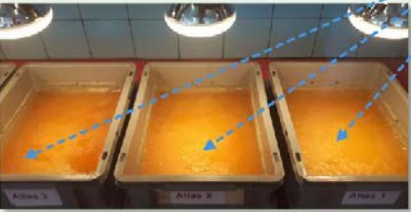

- Numerous existing wells available for further re-entry sampling
- Approval provided for one new well and NOI being prepared for an additional new well
- Third party wells being drilled may provide opportunity for additional sampling
- Extensive data base including seismic and drilling logs available
- SRK to review the data and sampling opportunities and determine additional work to be conducted to achieve a JORC resource
- It is expected that this will be completed by October, 2018



Feed Grade significantly higher after evaporation

Sample	Li (ppm)	B (ppm)	Br (ppm)	Mg (ppm)	Na (ppm)	K (ppm)	Ca (ppm)
Day 1	126	1,870	3,335	39,100	31,100	36,500	53,800
Day 28	986	12,400		11,500	1,860	3,810	282,000

Refer ASX release dated 17 July 2018.

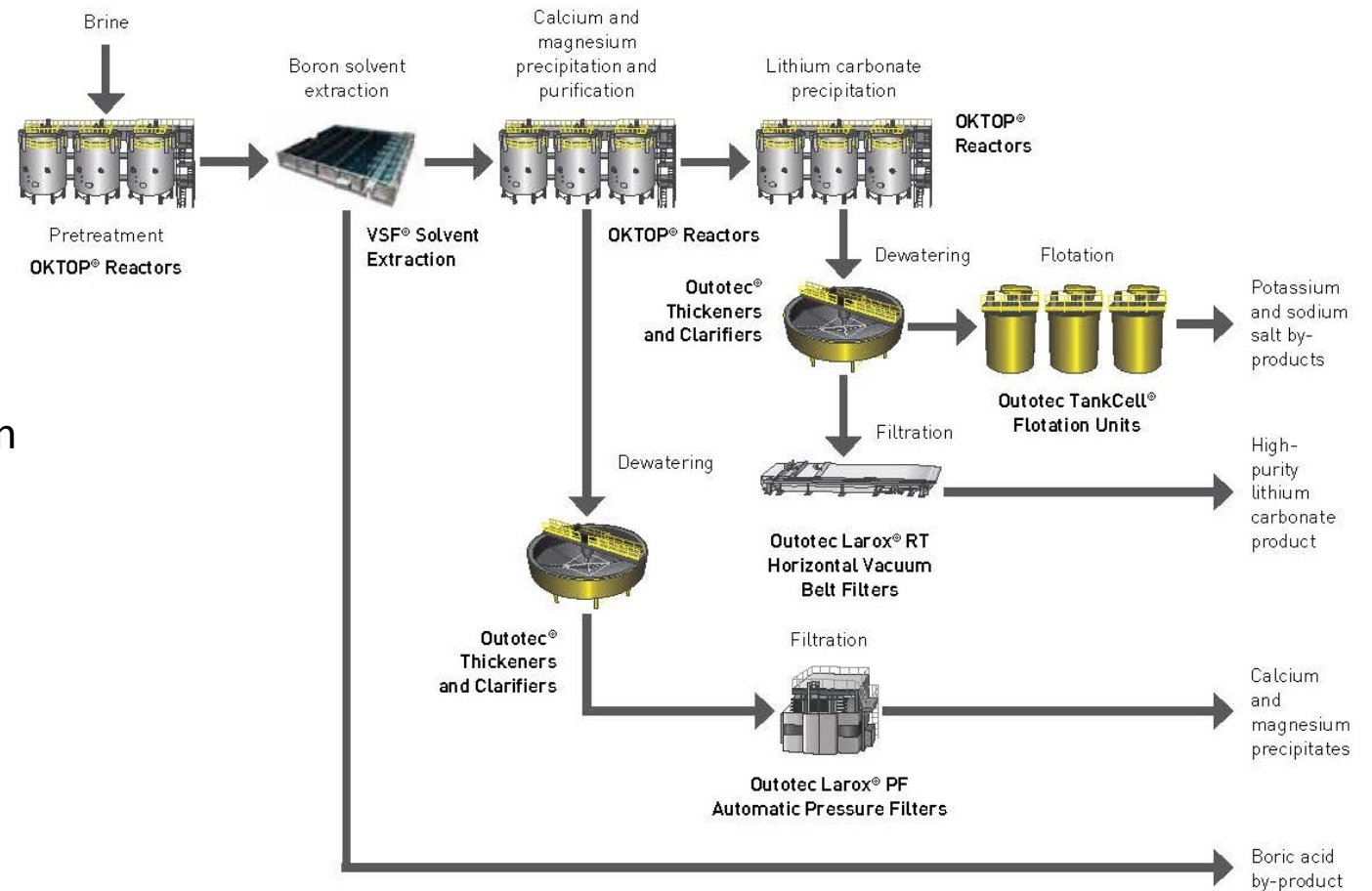
Day	Observations	
After day 1		<p>Evaporation is progressing, salt precipitation is observed in all baths soon after start.</p> <p><i>Crystals on the bottom due to evaporation</i></p>
After 3, 4, 5 days		<p>Crystals formation continues. Samples were taken for analysis from solution and solid.</p>
After 9 days		<p>Lots of crystals formed</p>





## Outotec – Precipitation/Solvent Extraction Li, B, Br, I & Mg

- High magnesium concentration reduced to less than 2 ppm from 39,100 ppm by precipitation
- High calcium concentration reduced to less than 5 ppm from 53,800 ppm by precipitation (Mg 0.5 ppm)
- Lithium loss less than 5% after successful removal of magnesium and calcium
- Test work to extract Li, B, Br and Iodine is underway



Outotec Conceptual brine process

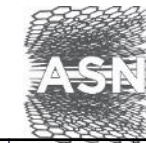


## Lilac Solutions – Adsorption Method Lithium

- This process extracts lithium only
- Lithium extracted from brine using adsorption process
- Patent process
- Bench top test work has produce first lithium carbonate product
- Can be incorporated into a multi mineral extraction processes



# Paradox Brine Project – Fast Track To Product



Anson Resources Ltd

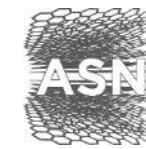
Paradox Brine Project - On Track to Product	Feb-18	Mar-18	Apr-18	May-18	Jun-18	July-18	Aug-18	Sep-18	Oct-18	Nov-18	Dec-18	Mar-19	Jun-19	Sep-19
<b>Stage 2</b>														
Acquisition of Cane Creek 32-1 Oil & Gas Well	■													
Sampling of Cane Creek for Li, B, Br, I & Mg		■	■											
Brine sample assays and transportation to test lab			■											
<b>Stage 3</b>														
Brine test work lab based pilot plant				■	■	■	■							
Lithium carbonate product qualification test commence							■	■	■	■	■			
<b>Stage 4</b>														
1 Drilling Program								■	■					
JORC/NI43-101 Definition									■	■	■	■		
Pre-Feasibility for production facility											■	■	■	
<b>Stage 5</b>														
In-field pilot plant design and construction												■	■	■
Commissioning														■

**Stage 2**  
Drilling program

**Stage 3**  
Lab based test work

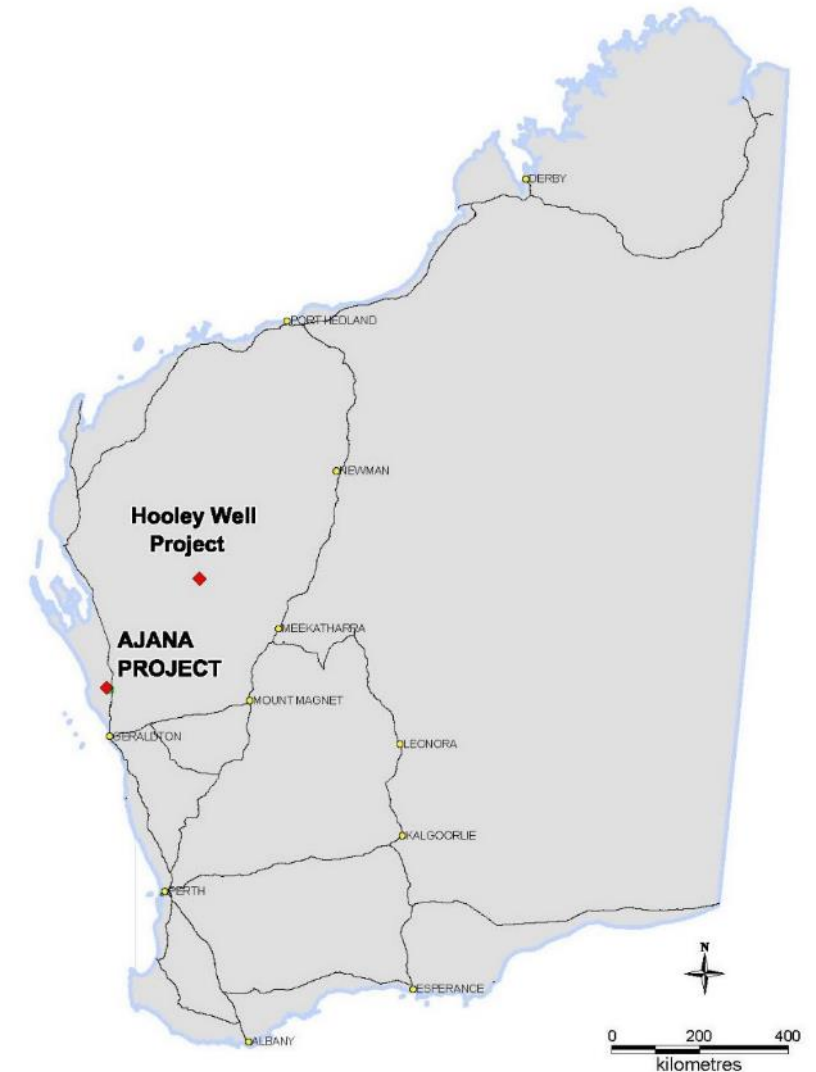
**Stage 4**  
JORC Drilling Program

**Stage 5**  
In-field Pilot Plant

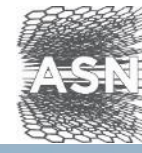


- Ajana – Graphite & Base Metals:
  - Lead Resource just upgraded to JORC 2012
  - Base metals and graphite:
    - 31 VTEM targets to test
    - Soil anomalies throughout project area to be tested
  - 470km north of Perth
- Hooley Well Nickel & Cobalt:
  - Lateritic Ni-Co-Cr deposit:
    - Cobalt mineralisation over an area of 1.5km \* 0.8km
    - HAC004, 4m @ 1.41% Ni, 0.11% Co & 1.99% Cr\*
  - Possible primary nickel sulphides (identified by IP response)
  - 720km north of Perth

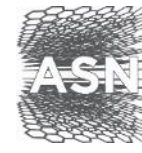
*\*Refer ASX release dated 9 March 2017.*





A wide-angle photograph of a desert landscape. In the foreground, there are reddish-brown rock formations and sparse green shrubs. The middle ground shows a vast, flat desert floor leading to a range of rugged, eroded mountains. In the far distance, a range of snow-capped mountains is visible under a clear blue sky with some light clouds.

# Thank You



Bruce Richardson  
Managing Director

E: [brichardson@ansonresources.com](mailto:brichardson@ansonresources.com)

T: +61 8 9226 0299

W: [www.ansonresources.com](http://www.ansonresources.com)

[twitter.com/anson\\_ir](https://twitter.com/anson_ir)

Linkedin. <https://www.linkedin.com/company/13357337/>