



# EAGLE MOUNTAIN MINING

## INVESTOR PRESENTATION

ASX:EM2 | MAY 2019





# Important Information

This presentation has been prepared by Eagle Mountain Mining Limited (ACN 621 541 204) (Eagle Mountain), a disclosing entity, and should be read in conjunction with recent ASX announcements (ASX : EM2).

**Nature of presentation:** This presentation is not investment advice and should not be relied upon to make any investment decision. This presentation is not a prospectus or other disclosure document and does not contain all of the information which would be found in such documents or which may be required by an investor to make a decision regarding an investment in Eagle Mountain. This presentation has not and will not be lodged with the Australian Securities and Investments Commission.

**Forward-looking statements:** This presentation contains forward-looking statements which incorporate an element of uncertainty or risk, such as 'intends', 'may', 'could', 'believes', 'estimates', 'targets' or 'expects'. These statements have been prepared with all reasonable care and attention, based on an evaluation of current economic and operating conditions, as well as assumptions regarding future events. These events are, as at the date of this presentation, expected to take place, but there cannot be any guarantee that such events will occur as anticipated or at all given that many of the events are outside Eagle Mountain's control. The stated events may differ materially from results ultimately achieved. Accordingly, Eagle Mountain and its officers, employees and advisers, cannot and do not give any assurance that the results, performance or achievements expressed or implied by the forward-looking statements contained in this presentation will actually occur. Further, other than as required by law, Eagle Mountain may not update or revise any forward-looking statement if events subsequently occur or information subsequently becomes available that affects the original forward-looking statement.

**No warranties or representations:** Although Eagle Mountain has used due care and diligence in the preparation of this presentation, to the extent permitted by law, no representation or warranty is made by Eagle Mountain nor any of its officers, employees or advisers, as to the accuracy or completeness of the information in this presentation. No information contained in this presentation or any other written or oral communication transmitted or made available shall be relied upon as a promise or representation and no representation or warranty is made as to the accuracy or attainability of any estimates, forecasts or projections set out in this presentation. No liability will attach to Eagle Mountain, or its officers, employees or advisers, with respect to any such information, estimates, forecasts or projections.

**Competent Person Statement :** Information in this report relating to Exploration Results is based on information compiled under the supervision of Mr Charles Bass who is an employee of the company. Mr Bass is a Fellow of the Australasian Institute of Mining and Metallurgy and a Fellow of the Australian Institute of Geoscientist. He holds shares and options in the Company. Mr Bass has sufficient experience which is relevant to the style of mineralisation and type of deposit under consideration and to the activity he is undertaking to qualify as a Competent Person as defined in the 2012 Edition of the Joint Ore Reserves Committee (JORC) Australasian Code for Reporting of Exploration Results, Mineral Resources and Ore Reserves. Mr Bass consents to the inclusion in this report of the matters based on his information in the form and context in which it appears.

Where the Company references results and information from previous ASX announcements, it confirms that it is not aware of any new information or data that materially effects the information included in those announcements, and that the form and context in which the Competent Persons findings are presented have not been materially modified from the original reports.

**Disclaimer:** Except for statutory liability which cannot be excluded, Eagle Mountain, its officers, employees, contractors and advisors expressly disclaim any responsibility for the accuracy or completeness of the material contained in this presentation and exclude all liability whatsoever (including in negligence) for any loss or damage which may be suffered by any person as a consequence of any information in this presentation or any error or omission therefrom.

**Copyright:** Eagle Mountain holds the copyright in this paper. Except as permitted under the Copyright Act 1968 (Cth), this paper or any part thereof may not be reproduced without Eagle Mountain's written permission.



## Eagle Mountain Fundamentals

### FOUR DISTINCT STYLES OF MINERALISATION



Four distinct styles of mineralisation targets within the Silver Mountain Project, all capable of hosting substantial ore deposits

### THREE HIGHLY- PROSPECTIVE AREAS



The Silver Mountain Project comprises three highly-prospective copper-gold-silver prospects

### PROSPECTIVITY CONFIRMED



Prospectivity further confirmed following completion of Phase One drilling along the Pacific Horizon and Red Mule project areas.

### SIGNIFICANT LANDHOLDING



Significant landholding in Arizona, a mining jurisdiction that hosts many world-class mines & developments, including the Bagdad & Miami-Globe porphyry copper mines, BHP/Rio's Resolution Copper development and the famous United Verde VMS mine

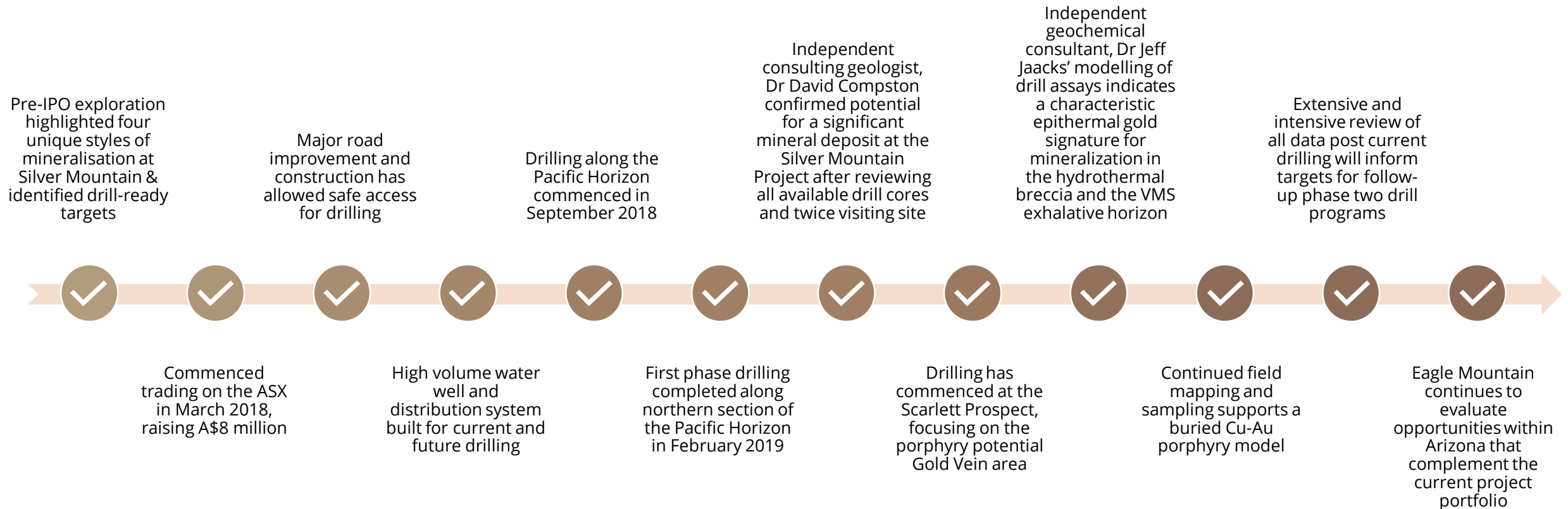
### EXPERIENCED BOARD & MANAGEMENT



Eagle Mountain is led by an experienced board and management which has a track-record of successful mineral discoveries and development



## Executing A Well-Defined Strategy



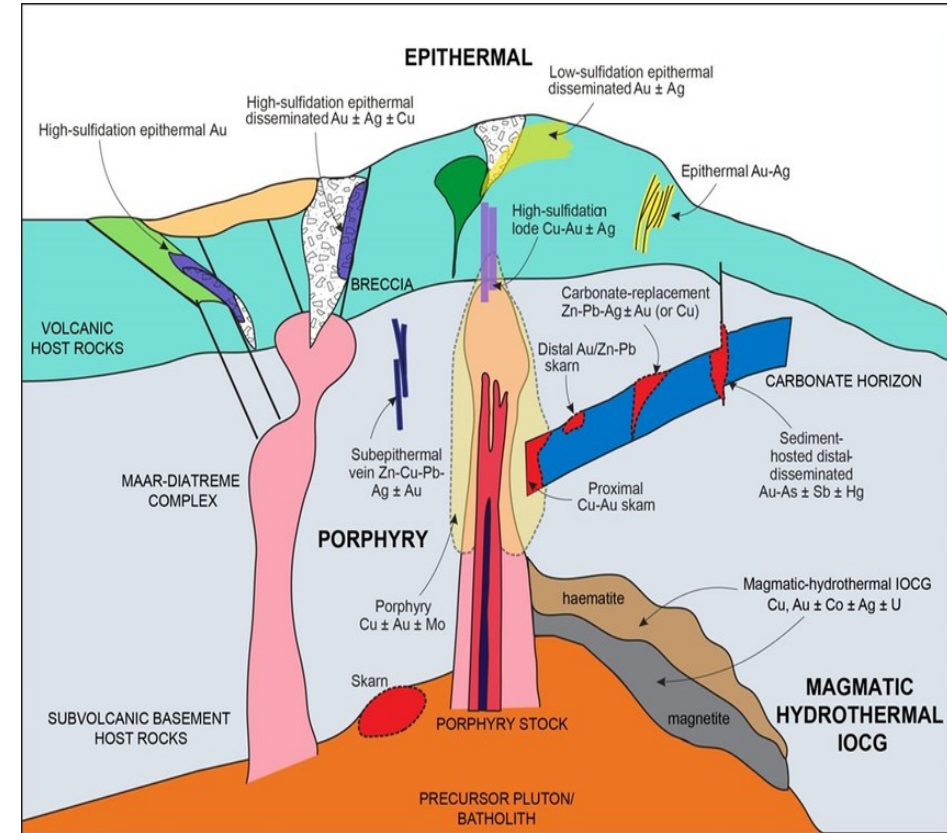


## Why Are We Excited ?

All exploration work conducted to date is pointing towards a potential buried porphyry at Silver Mountain, in addition to other forms of mineralisation. Highlights from Phase One drilling and findings from expert consultants include:

- ✓ Two different mineralising systems were observed in the Pacific Horizon drilling. The primary VMS system hosted in the Horizon and quartz-carbonate breccias, possibly associated with the Laramide porphyry system.
- ✓ Geochemical modelling indicates a characteristic epithermal gold chemical signature for mineralisation in the hydrothermal breccia and the chert-tuff of the exhalative horizon
- ✓ The Pacific Horizon has been “hit” with three mineralizing events: 1) the original VMS system; 2) intrusive-related breccia mineralisation; and 3) an epithermal overprint in the Tertiary and much later with supergene upgrading
- ✓ Quartz-Carbonate Breccia, of possible Laramide age, has been encountered in almost all drilling along Pacific Horizon, both within the VMS horizon and below the footwall. It was the breccia found on the Pacific Mine dump that carried high values of Cu, Au and Ag (eg 4.24 gt/t Au, 112 g/t Ag and 3.54% Cu)\*
- ✓ There are several dozen zones of anomalous Au, Ag and Cu anomalism in the drilling
- ✓ Indicator minerals, such as Bi (bismuth) and Mo (molybdenum) increase in drill holes and surface sampling in moving from the Pacific Mine to the southwest, suggesting a porphyry could exist to the SW of the Pacific Mine

\* Information on results outlined above, is contained in the Independent Geologists Report within Eagle Mountain's Prospectus dated 23 January 2018.



The schematic illustrates epithermal ore genesis. What we have found, so far, may be a “low sulphidation” system (ie, relatively low in sulphur minerals, such as pyrite)

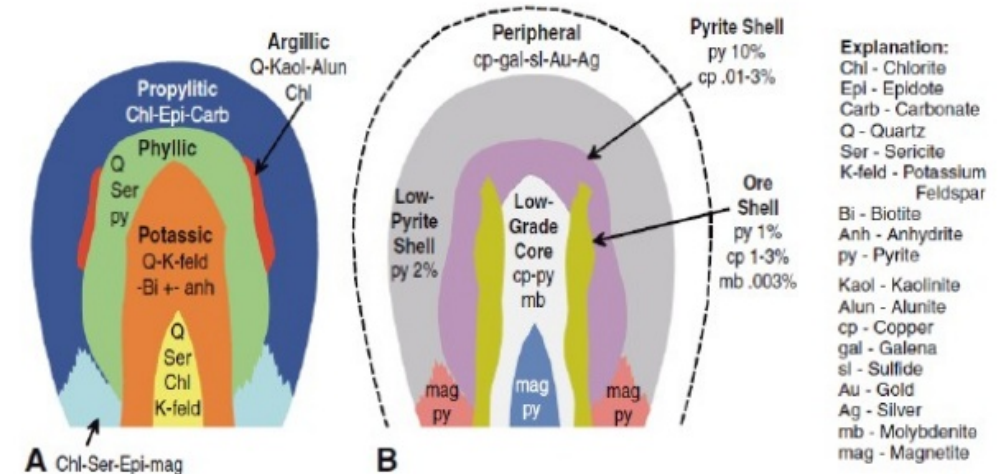




# Porphyry Copper 101 - A Porphyry Nearby?

- ✓ Magma (molten rock from deep beneath the surface) is created when two tectonic plates collide (eg, Laramide Arc in Arizona) and cools to form the basis of porphyry copper deposits
- ✓ One plate is forced under the other in what is called a subduction zone and the porphyry forms at depth below an active volcano
- ✓ The magma cools in two stages, first slowly cooling to form large crystals, then subsequently more rapid cooling
- ✓ Associated with the magma, super-heated hot water (hydrothermal fluids) creates low-grade mineralisation adjacent to the walls of the solidifying magma
- ✓ Over time, erosion removes the overlying volcanoes covering the porphyry deposits
- ✓ Majority of porphyry coppers are associated with Tertiary-age volcanism.
- ✓ Deposits are frequently found in clusters. **A number of porphyry deposits are located in close proximity to Silver Mountain.**
- ✓ A focal point for many porphyries around the world are where regional scale NW'ly trending structures (eg Laramide Arc) intersects more localised NNE'ly trending structures

## Porphyry Model Schematic

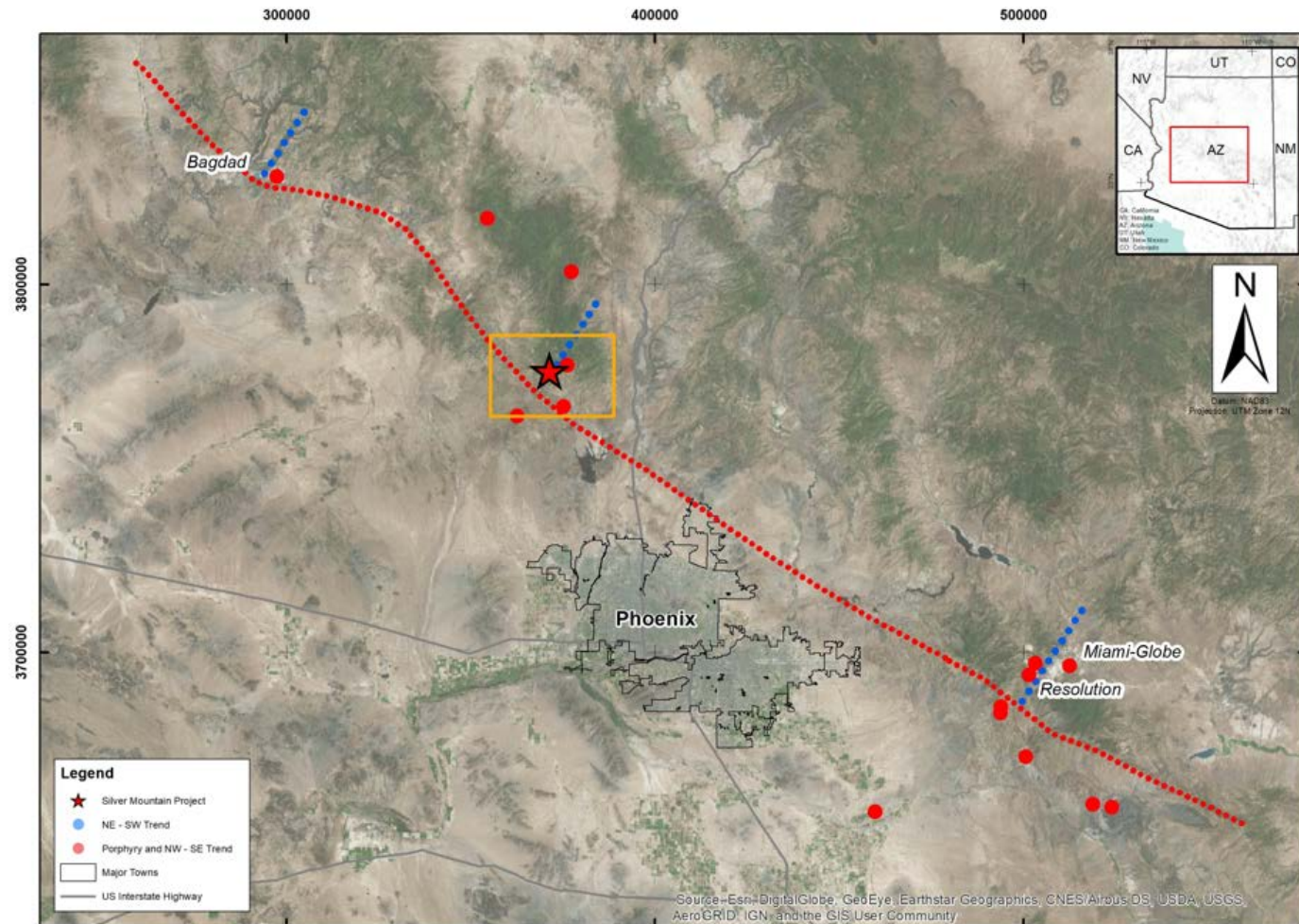


**Hydrothermal alteration zones associated with porphyry copper deposit (A) Schematic cross section of hydrothermal alteration mineral zones, which consist of propylitic, phyllic, argillic, and potassic alteration zones. (B) Schematic cross section of ores associated with each alteration zone.**



## Arizona – A Tier One Jurisdiction

- ✓ A focal point for many porphyries around the world are where regional scale NW'ly trending structures (eg Laramide Arc) intersects more localised NNE'ly trending structures





# An Untapped Opportunity



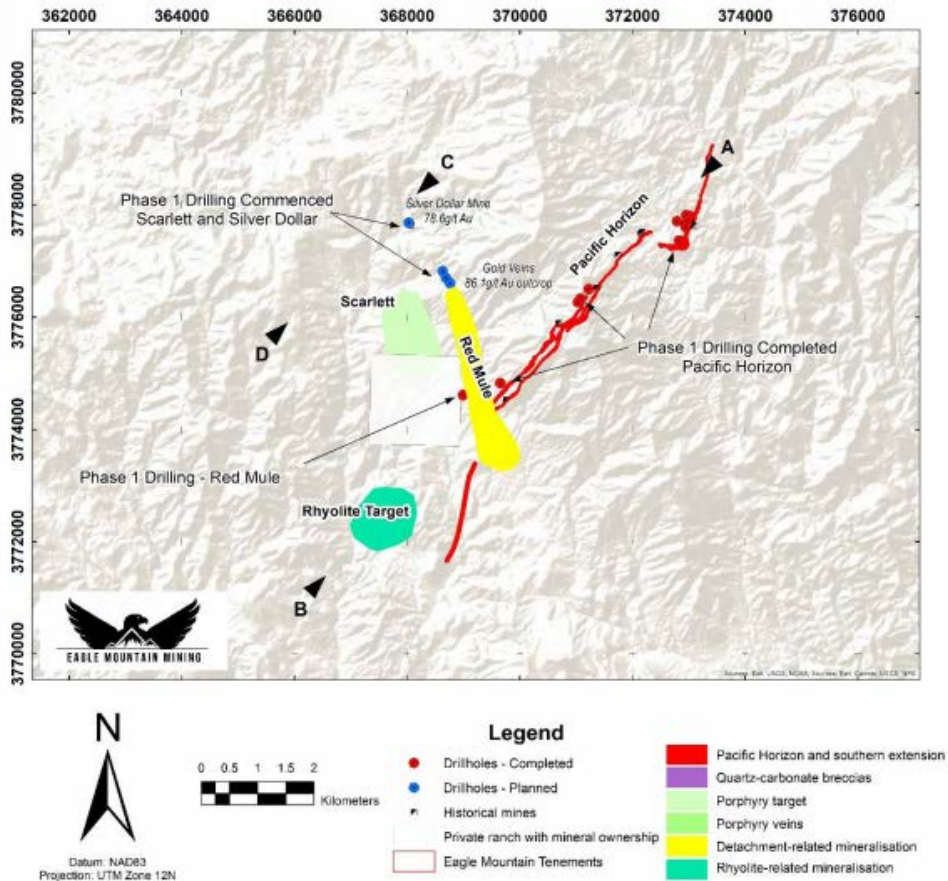
Arizona Major Mines and Mineralisation Trends

- Located 100km north west of Phoenix
- Comprises three key prospects:
  - Pacific Horizon – VMS & Quartz-Carbonate Breccia
  - Scarlett - Porphyry
  - Red Mule – Detachment Zone
- Four styles of mineralisation have been identified at Silver Mountain.
  - This provides Eagle Mountain with geologic optionality when conducting exploration programs at Silver Mountain
- Silver Mountain sits on the NW-SE Laramide Arc, which hosts world-class porphyry deposits such as Bagdad, Miami and Resolution
  - Bagdad: Reserves 2015: 1.15Bt @ 0.34% Cu; Production 2014: 117,000t Cu
  - Miami-Globe: Production 1915-1989: 760Mt @ 0.69% Cu (5.2Mt Cu)
  - Resolution (BHP/Rio JV): Inferred Resource 1.6 BT at 1.47% Cu
- Silver Mountain also sits on the southern extension of a NE-SW prospective Proterozoic greenstone belt which hosts VMS mines such as United Verde and Iron King
  - United Verde: Production 1883-1975: 38Mt @ 5% Cu
- Arizona offers a number of attractive project opportunities, and Eagle Mountain continues to review a number of advanced opportunities that complement the current project portfolio





## Exploration Results Underpin Exciting Potential \*



Silver Mountain Prospects, Mineralisation Styles and Drill Hole Locations  
Note the intersection of the NW'ly Red Mule structure and NE'ly Pacific Horizon,  
creating a possible location for a porphyry

- Phase One drilling along the Pacific Horizon and Red Mule prospects completed
- Significant anomalous grades encountered in most drill holes
- Quartz-carbonate breccia encountered in almost all drill holes along the Pacific Horizon
- Geochemistry and alteration observed in drill core suggests the presence of a nearby buried porphyry system
- Dr David Compston, an experienced Australian geological consultant recently spent two months at the Eagle Mountain office in Arizona
- Dr Compston reviewed all available drill core and completed two site visits. Outlined below is Dr Compston's summary on the perspective of Silver Mountain

"Given the apparent widespread alteration (calcite, chlorite) and the widespread distribution of the copper-bearing breccias, it is apparent there is potential for a significant mineral deposit to be present on the Silver Mountain Project. There is no diagnostic alteration that definitely indicates a VMS or porphyry copper deposit, but it is likely there is further copper to be discovered."



# Four Styles of Mineralisation

## Proterozoic Massive Sulphide (Pacific Horizon prospect)

- The Pacific Horizon is more than 9km in length and ~40m wide, and has an affinity with exhalate, a rock type often associated with VMS deposits
- The Horizon is part of a Proterozoic age greenstone belt that hosts numerous VMS deposits including the world-class **United Verde deposit (34.5 Mt @ 5% copper and 1.13 g/t gold)** located near Jerome

## Laramide or mid-Tertiary quartz-carbonate breccia (Pacific Horizon prospect)

- Quartz-carbonate Cu-Au bearing breccias occur infrequently along the Pacific Horizon
- These rocks are found at the waste dumps of the Pacific Mine and at other locations which were the sites of historical mining activity, such as the **Buffalo, Wellington and #10 mines**
- These breccias contain patches of abundant chalcopyrite hosted in a massive coarse-grained carbonate breccia. **The breccia found on the Pacific Mine dump assayed 4.24 g/t Au, 112 g/t Ag, and 3.54% Cu. \***

## Porphyry-style (Laramide) veins in Proterozoic granites (Scarlett prospect)

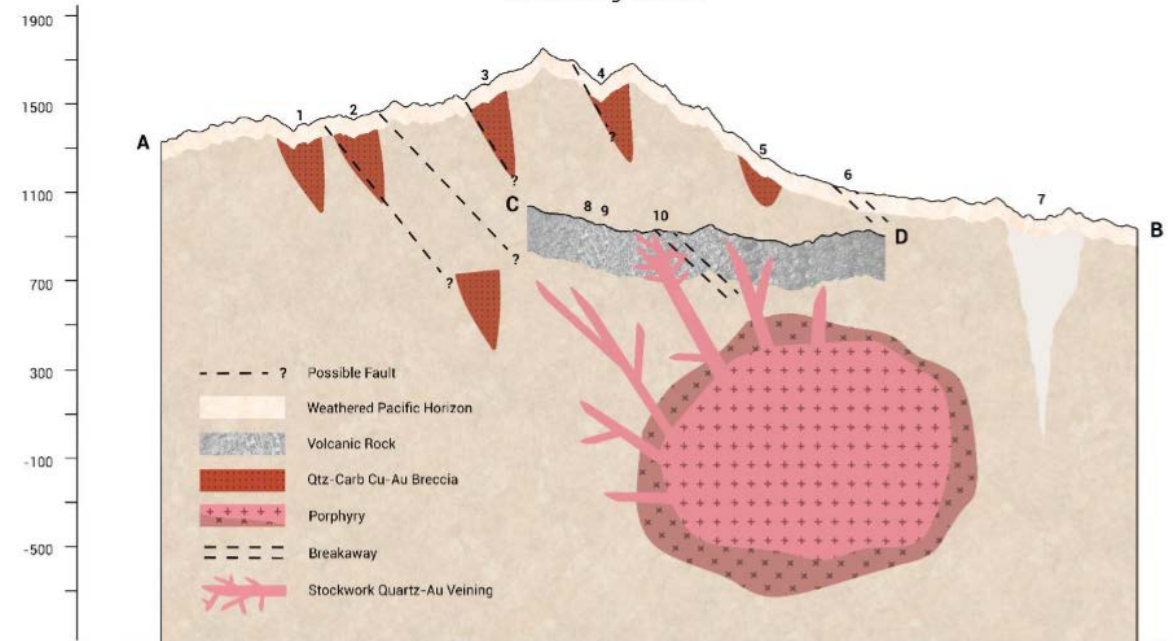
- The second style and phase of mineralization is a set of NE-striking, gold-bearing quartz-vein
- The Au-bearing veins occur within narrow fracture zones and as discontinuous lenses within dilational zones. **Assay values range from 10 to 84 g/t Au with up to 2% Cu \***
- The Sheep Mountain copper porphyry lies ~5 kilometres to the south of the project area, and a possible porphyry intrusive just west of the Scarlett vein system

## Breakaway detachment zone (Red Mule and Scarlett prospects)

- The Breakaway Zone at the Red Mule area is considered to be a significant fault zone
- The Breakaway Zone, considered to be a detachment fault, **could host the tonnage and grades to be of potential economic value**
- Detachment associated mineralisation has only been recently recognised in Arizona as the cause for much mineralisation found in the state

## Silver Mountain Hypothetical Mineralisation Systems

NE-SW Long-Section



Vertical exaggeration: 2x

Horizontal scale:

0m 1000m



- |   |  |  |
|---|--|--|
| 1. Pacific Mine Waste Dump Sample<br>3.5% Cu, 4.2g/t Au, 112g/t Ag    | 5. #10 Mine Waste Dump Sample<br>1.9% Cu, 3.3g/t, 51.2g/t Ag | 9. Scarlett Outcrop Sample<br>86g/t Au                 |
| 2. Wellington Mine Waste Dump Sample<br>3.5% Cu, 0.3g/t Au, 350g/t Ag | 6. Red Mule Vein Sample<br>921g/t Ag                         | 10. Working in Breakaway Zone<br>86.1g/t Au & 2.15% Cu |
| 3. Buffalo Mine Waste Dump Sample<br>11.1% Cu, 10.7g/t Au, 251g/t Ag  | 7. Rhyolite Outcrop Sample<br>27g/t Au                       |  |
| 4. Copper Ash Mine Waste Dump Sample<br>3.3% Cu, 0.2g/t Au, 251g/t Ag | 8. Silver Dollar Mine Waste Dump Sample<br>78/6g/t Au        |  |

\* Information on results outlined above, is contained in the Independent Geologists Report within Eagle Mountain's Prospectus dated 23 January 2018.





## A Compelling Investment Opportunity





## The Right Place And The Right Time

Silver Mountain offers a diversified landholding, prospective for both copper porphyry and VMS

Patented Claims along Pacific Horizon provide Eagle secure surface and mineral rights

Arizona is a copper-focused mining region and ideally suited to explore and develop copper-gold projects.

Experienced geological consultant Dr David Compston believes there is significant potential for a mineral deposit to be present at Silver Mountain

A characteristic epithermal gold chemical signature for mineralization in the hydrothermal breccia and the VMS exhalative horizon identified by Dr Jeff Jaacks, experienced geochemist

A five-hole drill program has commenced at Scarlett targeting the mineralisation that may be associated with a buried porphyry

Funds raised will be used for analysis of current drill results, development of a targeted follow-up drill program, and evaluation of advanced project opportunities in Arizona





## Capital Raising Overview

### The Offer \*

- Eagle Mountain is seeking to raise approximately A\$2.8 million via a rights issue offering one(1) right for every five(5) shares held and priced at \$0.15
- There is also one(1) attaching unlisted option for every two(2) rights taken up. The options are exercisable at \$0.20 and have a 24-month exercise period
- Peloton Capital is the lead manager of the rights issue
- The Board and major shareholder Silver Mountain Mining Nominee Pty Ltd have committed to fully participate in the Rights Issue subject to compliance with the Corporations Act

### Use of Funds

- The funds raised will be used for continued exploration at the Silver Mountain Project, the assessment of new opportunities that have been recognised in Arizona, and for working capital including corporate and administrative expenses

### Offer Timetable

- Rights Issue announced to the market on Monday 6 May 2019 \*
- Prospectus proposed to be lodged with ASIC / ASX on Friday 10 May 2019
- Full details of the Entitlement Offer, including the timetable, will be announced by the Company when the prospectus is lodged



# Corporate Snapshot

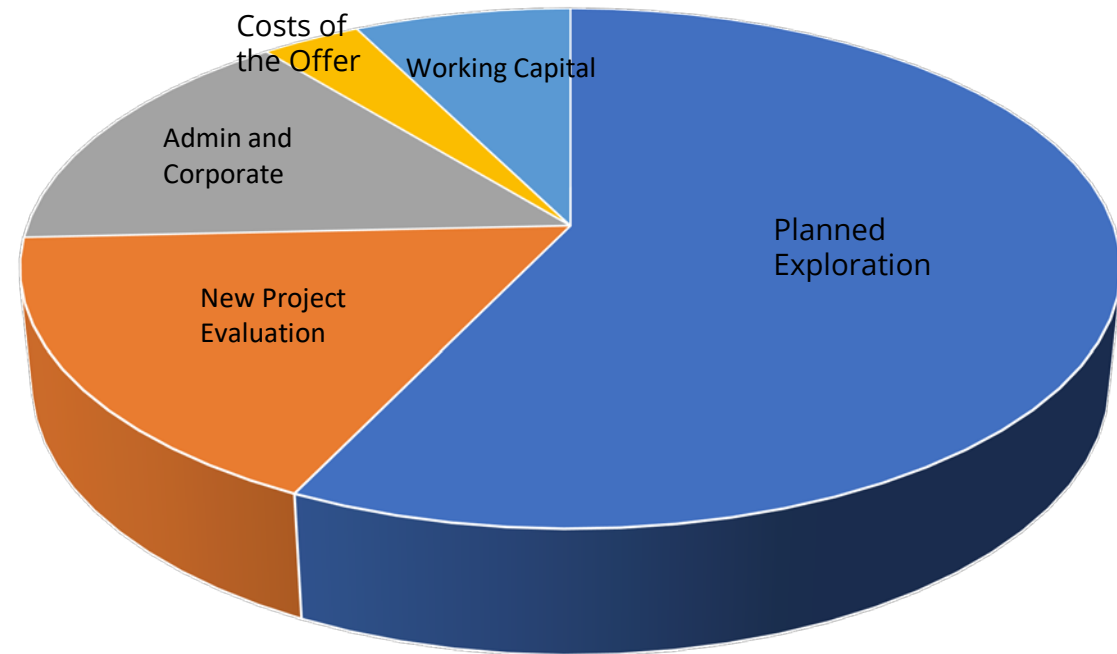
## KEY FINANCIALS

Shares on Issue	92,526,600
Currently escrowed (16.03.20)	17,494,226
Options (ex \$0.20 & \$0.30)	18,156,599
Performance Rights	180,000
Top 20 Ownership	64.07%
Share Price (At 3.05.19)	14.5 cents
Share Price (VWAP ten days prior to announcement)	18.4 cents
Fully diluted Market Cap	\$16.07 M
Cash as at 31 March 2019	\$1,660,000

## TOP SHAREHOLDERS \*

Silver Mountain Mining Nominee Pty Ltd	39.62%
Merrill Lynch Australia Nominees Pty Limited	2.76%
J P Morgan Nominees Australia Limited	2.30%
Aralad Management Pty Ltd <TRK Superannuation Fund A/C>	2.16%
HSBC Custody Nominees (Australia) Ltd	1.87%
Prospect AG Trading Pty Ltd <O'Keeffe Family A/C>	1.35%

## PROPOSED USE OF FUNDS <sup>1</sup>



<sup>1</sup> Proposed Use of Funds incorporates Existing Cash and Funds to be raised, full details of the Entitlement Offer, will be announced by the Company when the prospectus is lodged



## Board And Management



**CHARLES BASS**  
MANAGING DIRECTOR &  
CHIEF EXECUTIVE OFFICER

BSc Geology, MSc Mining Engineering/  
Mineral Processing, FAICD, FAusIMM, FAIG  
HonDBus ECowan



**RICK CRABB**  
NON-EXECUTIVE CHAIRMAN

B. Juris (Hons), LLB, MBA, FAICD



**FABIO VERGARA**  
CHIEF GEOLOGIST

MSc, BSc, MAusIMM



**ROGER PORT**  
NON-EXECUTIVE DIRECTOR

BA, FCA, SF Fin, FAICD



**BRETT ROWE**  
ALTERNATE DIRECTOR  
(FOR CHARLES BASS)

BComm, MAcc, GAICD



**MARK PITTS**  
COMPANY SECRETARY

BBus, FCA, GAICD



# CONTACT INFORMATION

**A** Ground Floor, 22 Stirling Highway  
Nedlands, Western Australia, 6009  
**E** [info@eaglemountain.com.au](mailto:info@eaglemountain.com.au)  
**W** [eaglemountain.com.au](http://eaglemountain.com.au)

For further information please contact:

Charlie Bass  
BSc, MSc, FAusIMM, FAIG, FAICD  
Managing Director & CEO [charlie@eaglemountain.com.au](mailto:charlie@eaglemountain.com.au)

Mark Pitts  
B.Bus, FCA, GAICD  
Company Secretary  
[mark@eaglemountain.com.au](mailto:mark@eaglemountain.com.au)