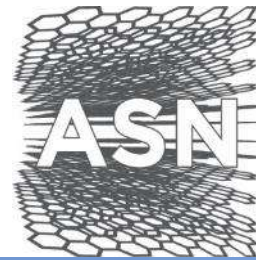


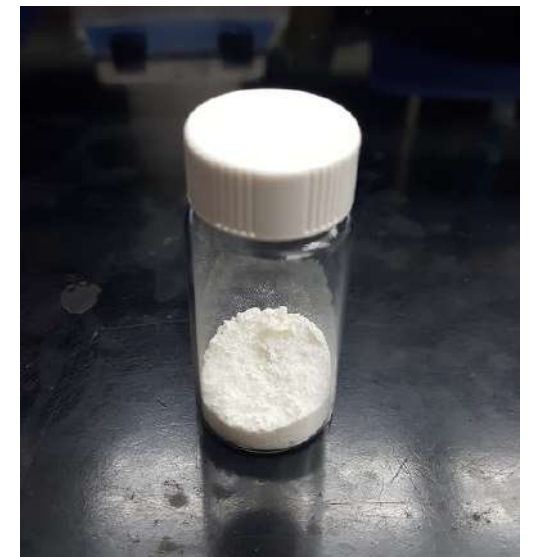
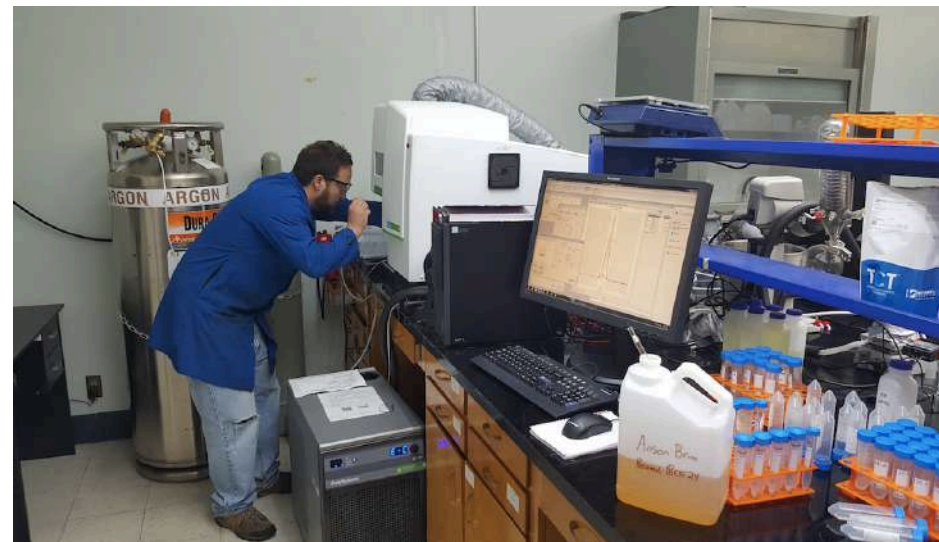
Paradox Brine Project: Fast Tracking to Production

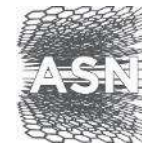
Battery Materials 2019

12th April 2019



Anson Resources Ltd





The information contained in this confidential document ("Presentation") has been prepared by Anson Resources Limited (the "Company"). It has not been fully verified and is subject to material updating, revision and further amendment. The Information may not be distributed to others at any time without the prior written consent of the Company (including the presentation) any copies thereof, and will destroy all analysis, complications and other documents or writings whatsoever containing or reflecting any such material.

While the information contained herein has been prepared in good faith, neither the Company nor any of its shareholders, directors, officers, agents, employees or advisers give, have given or have authority to give, any representations or warranties (express or implied) as to, or in relation to, the accuracy, reliability or completeness of the information in this Presentation, or any revision thereof, or of any other written or oral information made or to be made available to any interested party or its advisers (all such information being referred to as "Information") and liability therefore is expressly disclaimed. Accordingly, neither the Company nor any of its shareholders, directors, officers, agents, employees or advisers take any responsibility for, or will accept any liability whether direct or indirect, express or implied, contractual, tortious, statutory or otherwise, in respect of, the accuracy or completeness of the Information or for any of the opinions contained herein or for any errors, omissions or misstatements or for any loss, howsoever arising, from the use of this Presentation.

Neither the issue of this Presentation nor any part of its contents is to be taken as any form of commitment on the part of the Company to proceed with any transaction and the right is reserved to terminate any discussions or negotiations with any prospective investors. In no circumstances will the Company be responsible for any costs, losses or expenses incurred in connection with any appraisal or investigation of the Company. In furnishing this Presentation, the Company does not undertake or agree to any obligation to provide the recipient with access to any additional information or to update this Presentation or to correct any inaccuracies in, or omissions from, this Presentation which may become apparent.

This Presentation should not be considered as the giving of investment advice by the Company or any of its shareholders, directors, officers, agents, employees or advisers. Each party to whom this Presentation is made available must make its own independent assessment of the Company after making such investigations and taking such advice as may be deemed necessary. In particular, any estimates or projections or opinions contained herein necessarily involve significant elements of subjective judgment, analysis and assumptions and each recipient should satisfy itself in relation to such matters.

This Presentation includes certain statements that may be deemed "forward-looking statements". All statements in this discussion, other than statements of historical facts, that address future activities and events or developments that the Company expects, are forward-looking statements. Although the Company believes the expectations expressed in such forward-looking statements are based on reasonable assumptions, such statements are not guarantees of future performance and actual results or developments may differ materially from those in the forward-looking statements. Factors that could cause actual results to differ materially from those in forward-looking statements include market prices, continued availability of capital and financing, and general economic, market or business conditions. Investors are cautioned that any such statements are not guarantees of future performance and that actual results or developments may differ materially from those projected in forward-looking statements.

Competent Person's Statement The information in this announcement that relates to exploration results and geology is based on information compiled and/or reviewed by Mr Greg Knox, a member in good standing of the Australasian Institute of Mining and Metallurgy. Mr Knox is a geologist who has sufficient experience which is relevant to the style of mineralisation under consideration and to the activity being undertaken to qualify as a "Competent Person", as defined in the 2012 Edition of the Australasian Code for Reporting of Exploration Results, Mineral Resources and Ore Reserves and consents to the inclusion in this report of the matters based on information in the form and context in which they appear. Mr Knox is a director of Anson and a consultant to Anson.

Historical Results: A Competent Person has not done sufficient work on historical exploration results to disclose the Exploration Results in accordance with the JORC Code 2012; and it is possible that following further evaluation and/or exploration work that the confidence in the prior reported Exploration Results may be reduced when reported under the JORC Code 2012. Nothing has come to the attention of Anson that causes it to question the accuracy or reliability of the former owner's Exploration Results. Anson has not independently validated the former owner's Exploration Results and therefore is not to be regarded as reporting, adopting or endorsing those results.

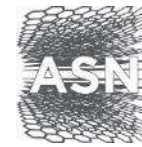
Shareholder Details



Anson Resources Ltd



	Apr 2019
# of shares	497m
Price	\$0.073
Market Cap	\$36m
# of shareholders	3,537



Bruce Richardson, B.A (Hons)
– Executive Chairman & CEO

- 10 years in exploration, mining and production in public and private companies
- >30 years of international business experience, particularly China
- In the past few years has raised over \$170 million of investment in mining projects



Peter (Greg) Knox, B.Sc.
(Geology) – Director

- Qualified geologist with >30 years of experience in exploration, mine development and mining operations
- Has worked on projects from grass-roots exploration through to mine development and production



Michael van Uffelen, B. Com.
– Director

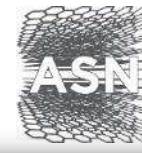
- Experienced Director, CFO & Company Secretary
- Chartered Accountant
- >30 years experience gained from working with major accounting firms, investment banks & public companies



Alexander Grant, M(Eng) – Director

- Co-founder of Lilac Solutions Inc (Lilac)
- Co-invented core families of patents Lilac's technology for lithium extraction from brines
- Led work on engineering scoping studies for lithium developers

Paradox Brine Project - Location



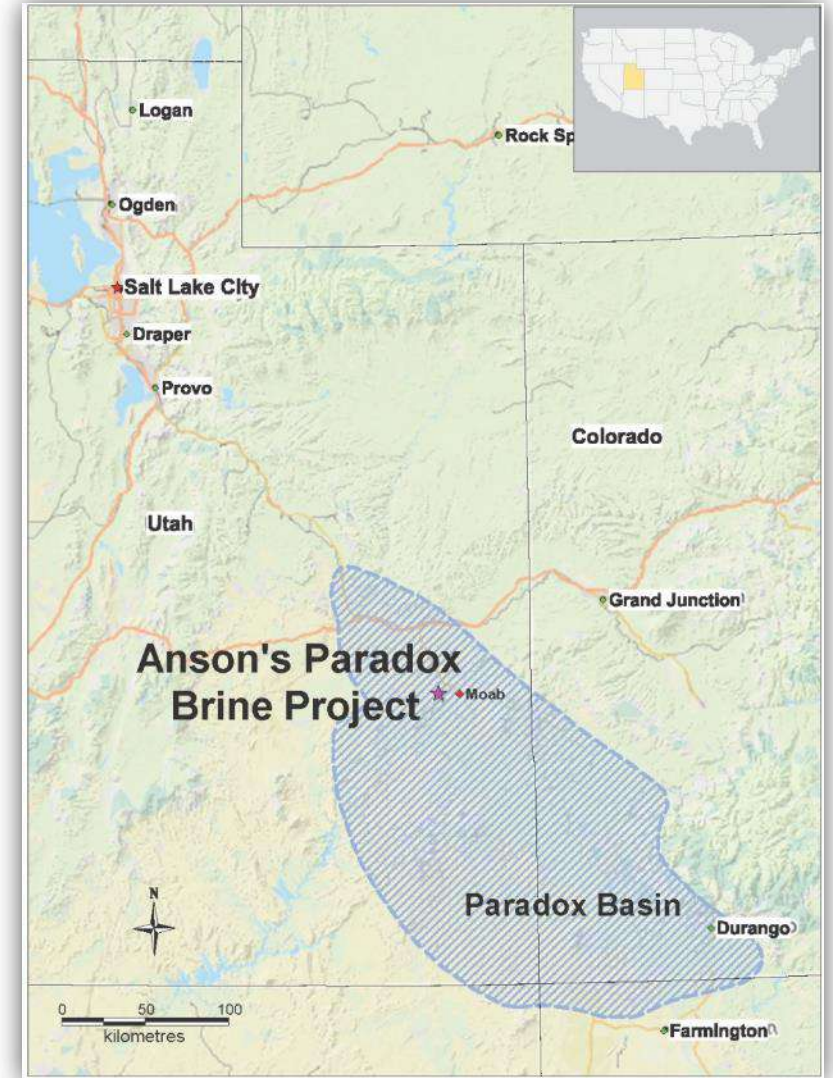
Anson Resources Ltd

Well Known Historic Mining Area:

- Existing exploration and mining support infrastructure
- Mined for uranium, copper, potash etc and oil & gas
- Brines known to exist throughout the Paradox Basin which covers an area 33,000 square miles (85,470km²) in the “Four Corners”

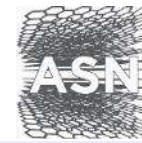


Potash Evaporation Ponds Near Moab



Project Location

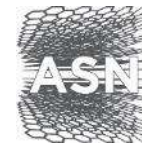
Paradox Brine Project - Timeline



Anson Resources Ltd

	Q4 2018	Q1 2019	Q2 2019	Q3 2019	Q4 2019	Q1 2020
Exploration – drilling:						
Skyline Unit 1		√				
Long Canyon No. 2		√				
JORC Resource						
Lithium pilot plants:						
Design and engineering	√	√				
Proof of concept - mini pilot plant						
Li ₂ CO ₃ product qualification testing						
Industrial scale, in-field pilot plant		√				
Scoping study / PFS						
Multiple revenue streams:						
B, Br, I test work	√	√				
Assess incorporating B, Br, I into the pilot plant						

Paradox Brine Project – Project Area



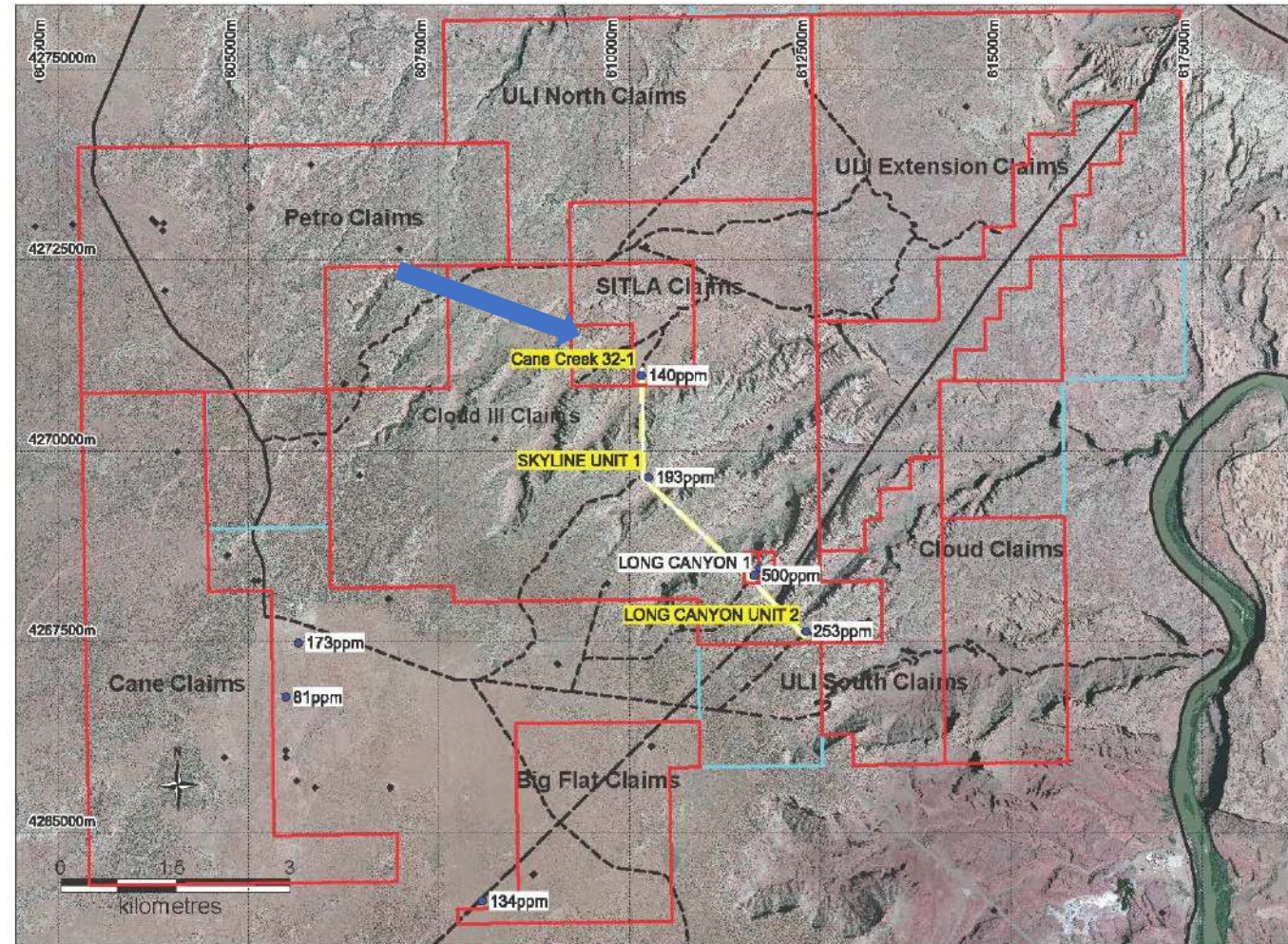
Anson Resources Ltd

- Total project area 1,317 claims covering 10,791 hectares (108 sq km) of land, re-entered 4 wells
- Fast-track to production:
 - Oil/gas lease and well at Cane Creek 32-1 (marked by blue arrow), pad for in-field pilot plant
 - Industrial Lease at Cane Creek
 - Installation of infrastructure commenced
- Estimated an exploration target of 85 M to 170 M tonnes at 100 to 500ppm Li

Area '000 m ²	Thickness m	Porosity %	Volume m ³	Density	'000 Tonnes (brine)
107,911	3.0480	20.05	65,947,042	1.3	85,000
107,911	6.096	20.05	131,894,085	1.3	171,000

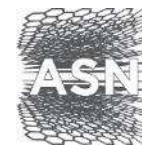
Estimated exploration target calculation*

* Refer ASX release dated 25 September 2018. The exploration target is conceptual in nature as there has been insufficient exploration undertaken on the project to name a Mineral Resource. It is uncertain that future exploration will result in a Mineral Resource.



Map Showing the Location Paradox Lithium Project Claims

Paradox Brine Project – Exploration Results



Anson Resources Ltd

Well	Clastic Zone	Li	Br	B	I	Mg
------	--------------	----	----	---	---	----

Anson's Results:

Skyline Unit 1	31	193.5	4,427	163.8	156.4	13,669
Cane Creek 32-1	31	102	5,041	65.3	97	27,900
Long Canyon No. 2	31	253	2,282	360	138	17,400

Historic Results:

Long Canyon No. 1	31	500	6,100	n/a	300	21,000
White Cloud No.2	31	n/a	2,500	20,000	450	43,600
Big Flat No 2	31	173	1,150	2,922	n/a	47,789

Well	Clastic Zone	Depth (Ft)	Flow Rate (bbl/h)	Pressure (psi)	Temperature (downhole, °F)
Long Canyon No. 2	31	6,318	112	5,175	150
Skyline Unit 1	31	6,220	250	4,427	116
Cane Creek 32-1	31	6,170	40	5,595	132



Lilac Solutions – Adsorption Ion Exchange (IX)

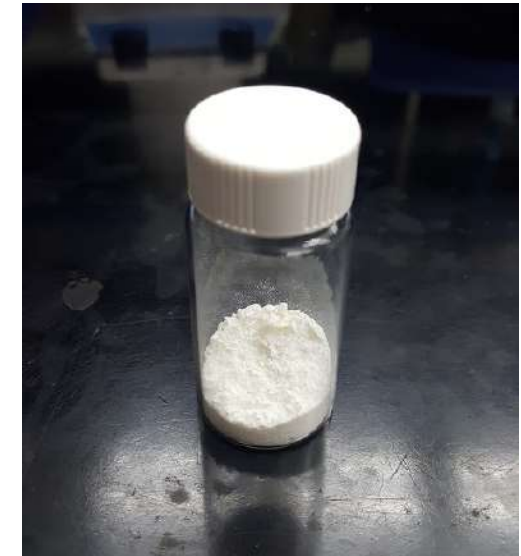
- Li only extraction process using patented beads
- First stage bench top test work extracted Li successfully from the Cane Creek well :
 - **Li_2CO_3 produced**
 - **LiOH produced**
- The extraction of the lithium can be conducted upstream or downstream of the extraction of the other minerals.
- **Proof of concept to supply product samples for prospective off-take partners' product qualification testing progressing**
- **Industrial scale, in-field pilot plant in design and engineering phase**



Li_2CO_3



Li_2SO_4



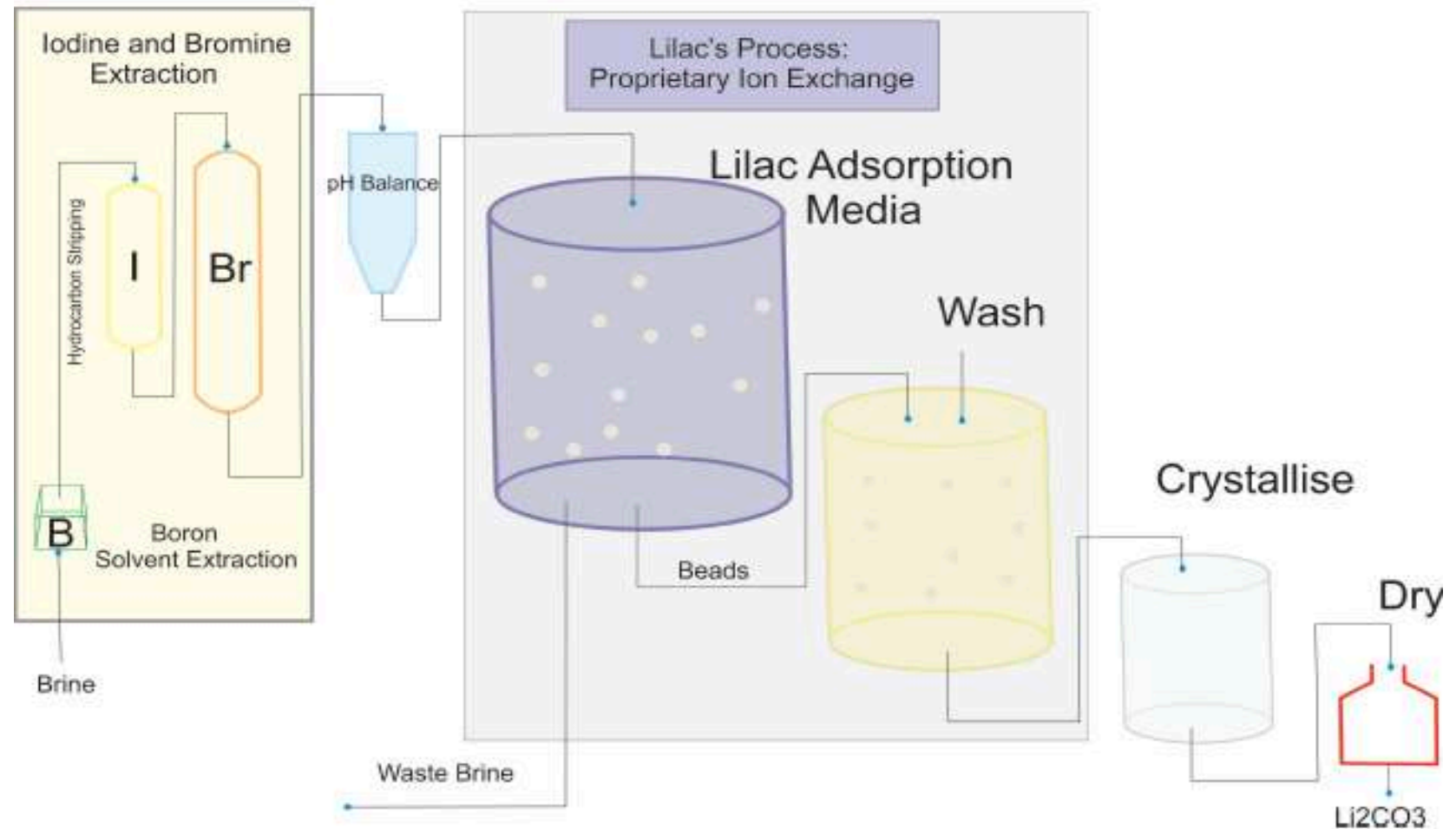
LiOH

Li production test work completed:

- Bench top test work established a 80%Li recovery rate
- Eluate concentration 16,000 ppm following completion of ion extraction

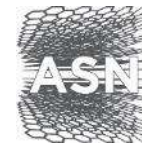
Potential additional revenue streams:

- Bench top testwork had the following recoveries:
 - Boron - 89%
 - Bromine - 90%
 - Iodine - 70%



Conceptual Flow Sheet

Paradox Brine Project – In-field Pilot Plant



Anson Resources Ltd

- Industrial scale
- Design and engineering by Lilac and Hatch underway
- Construction of infrastructure commenced



- Historic high grade vanadium and uranium mineralisation
- Rock chip samples up to 13.1% V or 23.38% V_2O_5
- 418 lode claims, 3,380 hectares
- New claims strategically located in the Yellow Cat Mining District

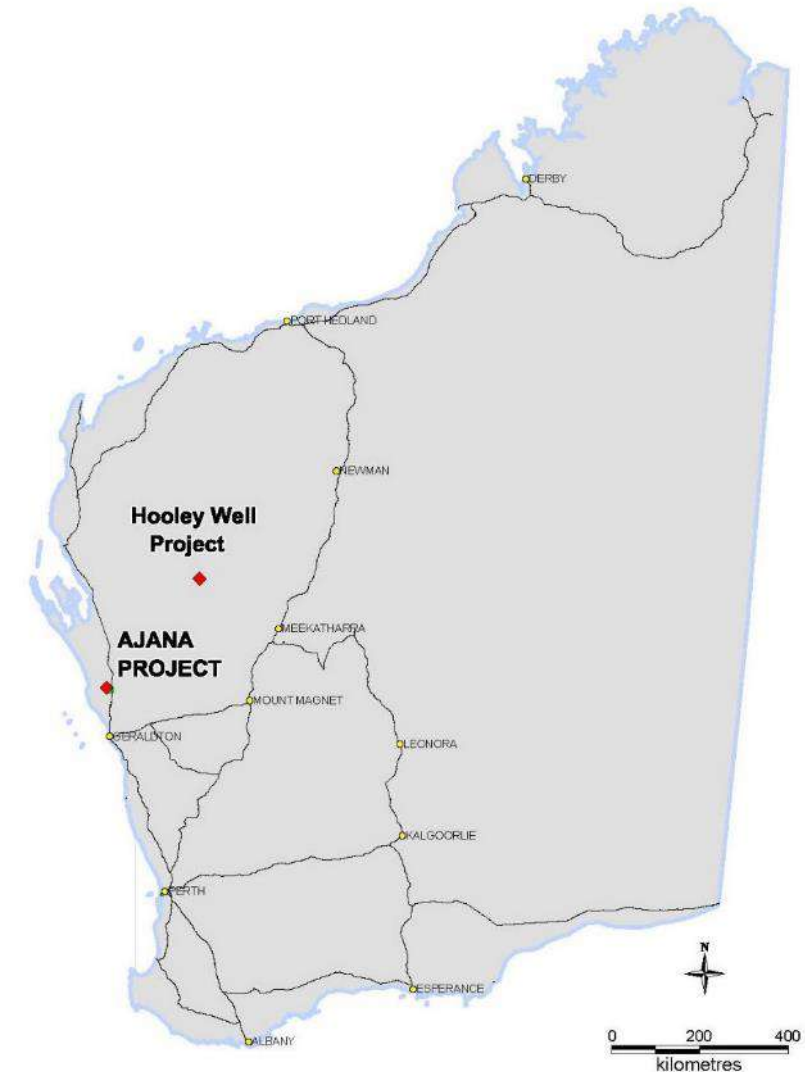
Sample	Type	Vanadium (V%)	V_2O_5 (%)	Uranium (U%)	U_3O_8 (%)
YC01	Weathered	1.42	2.53	0.03	0.035
YC02	Fresh	13.1	23.38	0.09	0.106
YC03	Weathered	2.62	4.68	0.07	0.082
YC05	Fresh	5.50	9.82	0.72	0.849
YC06	Fresh	9.90	17.67	0.42	0.495

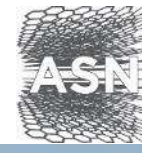
Rock chip samples collected from Yellow Cat Project area



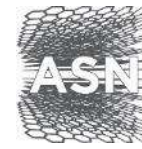


- Ajana – Graphite & Base Metals:
 - Lead Resource just upgraded to JORC 2012
 - Base metals and graphite:
 - 31 VTEM targets to test
 - Soil anomalies throughout project area to be tested
 - 470km north of Perth
- Hooley Well Nickel & Cobalt:
 - Lateritic Ni-Co-Cr deposit:
 - Cobalt mineralisation over an area of 1.5km * 0.8km
 - HAC004, 4m @ 1.41% Ni, 0.11% Co & 1.99% Cr
 - Possible primary nickel sulphides (identified by IP response)
 - 720km north of Perth





Thank You



Bruce Richardson
Executive Chairman and CEO

E: brichardson@ansonresources.com

T: +61 8 9226 0299

W: www.ansonresources.com

twitter.com/anson_ir

Linkedin: <https://www.linkedin.com/company/13357337/>