



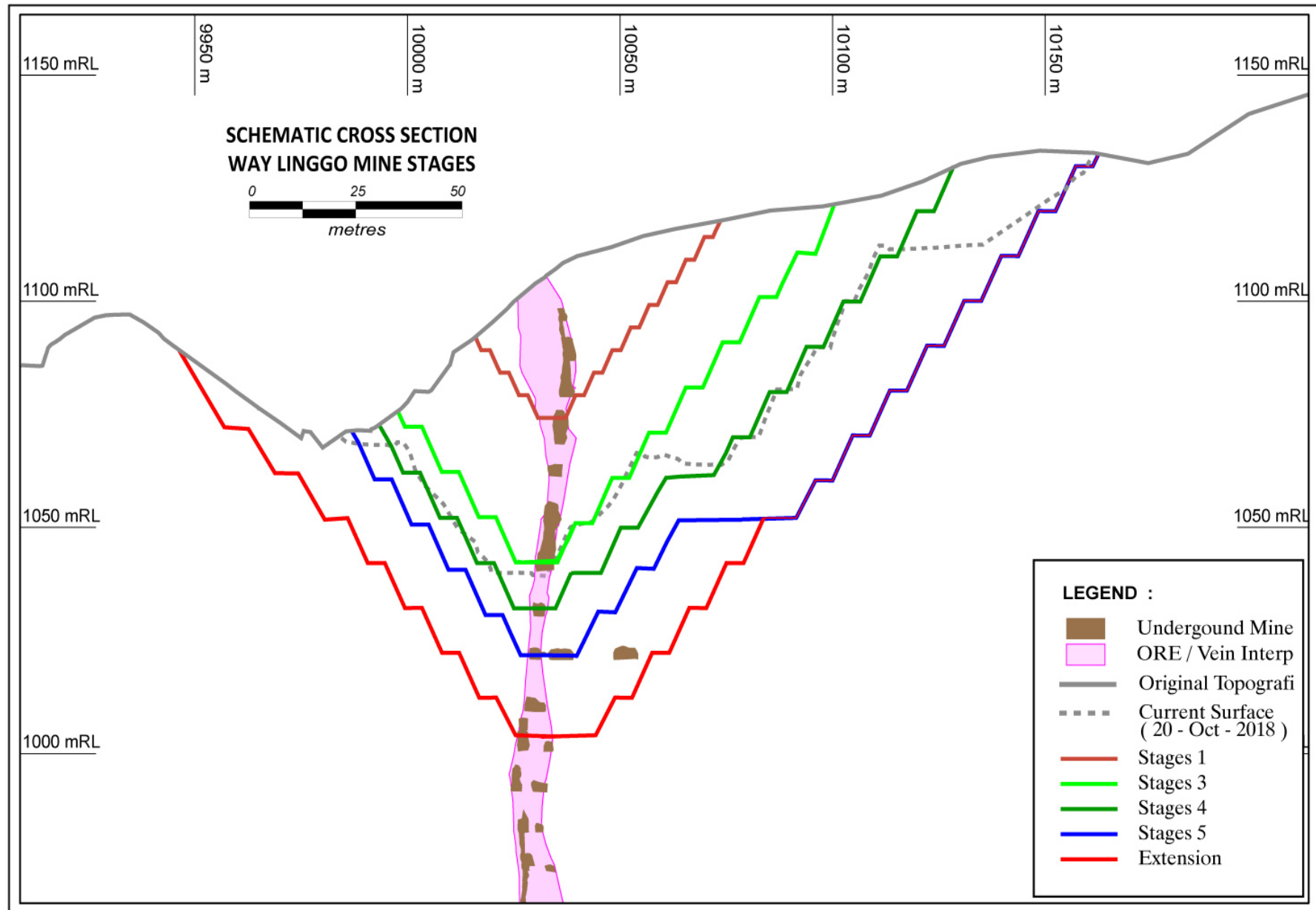
KINGSROSE
MINING LIMITED

ANNUAL GENERAL MEETING

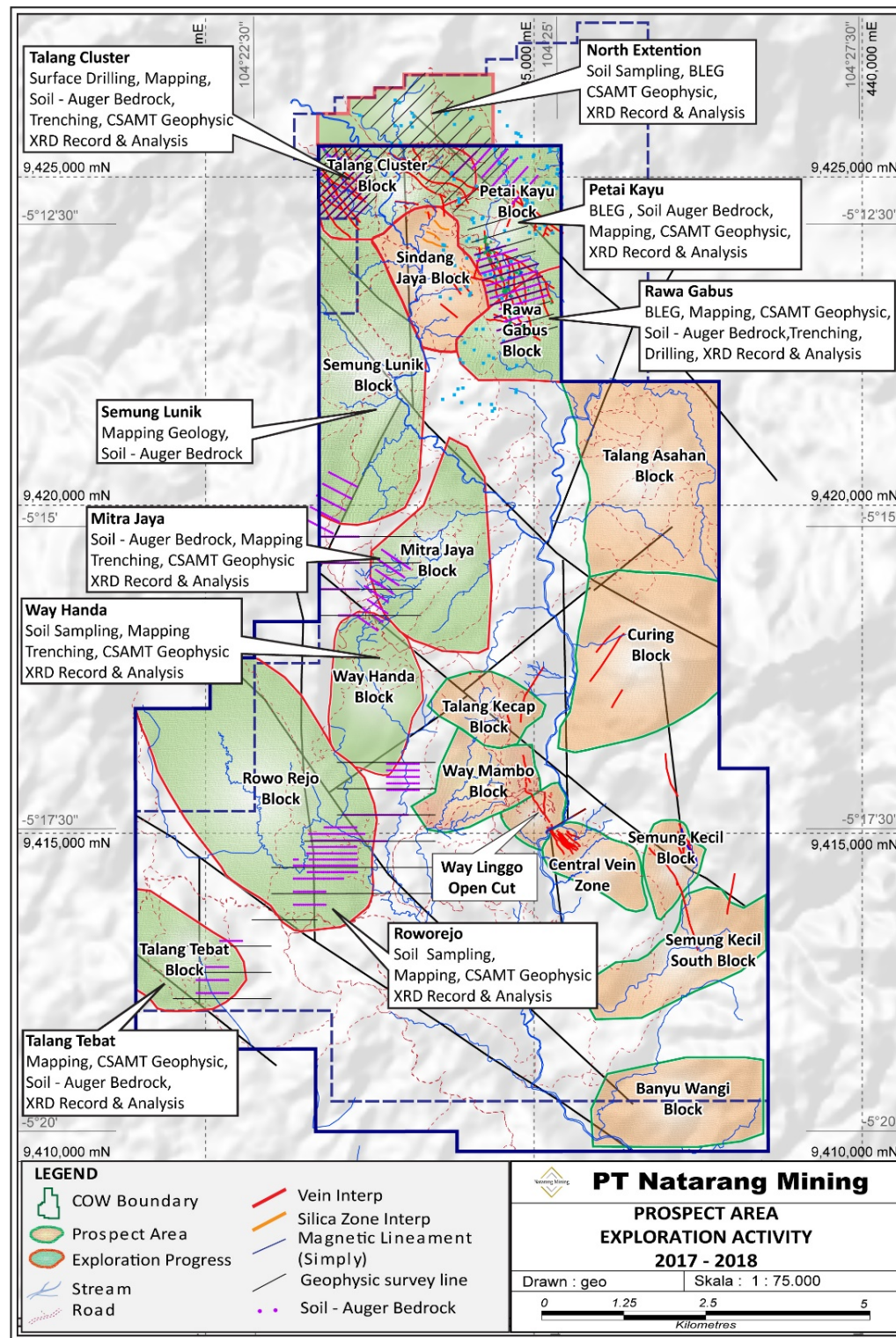
2 NOVEMBER 2018



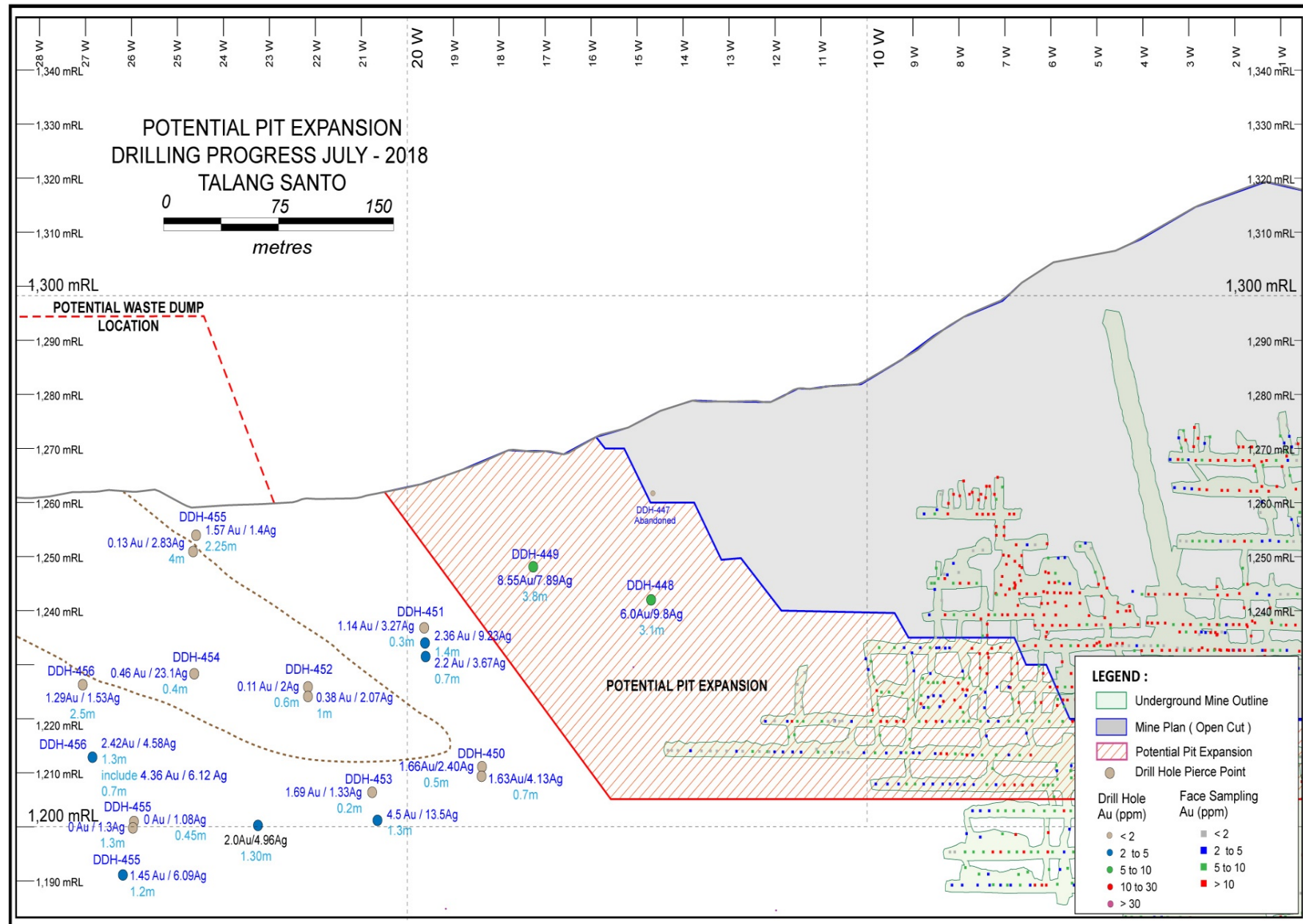
Way Linggo Pit Expansion



Focus on Exploration

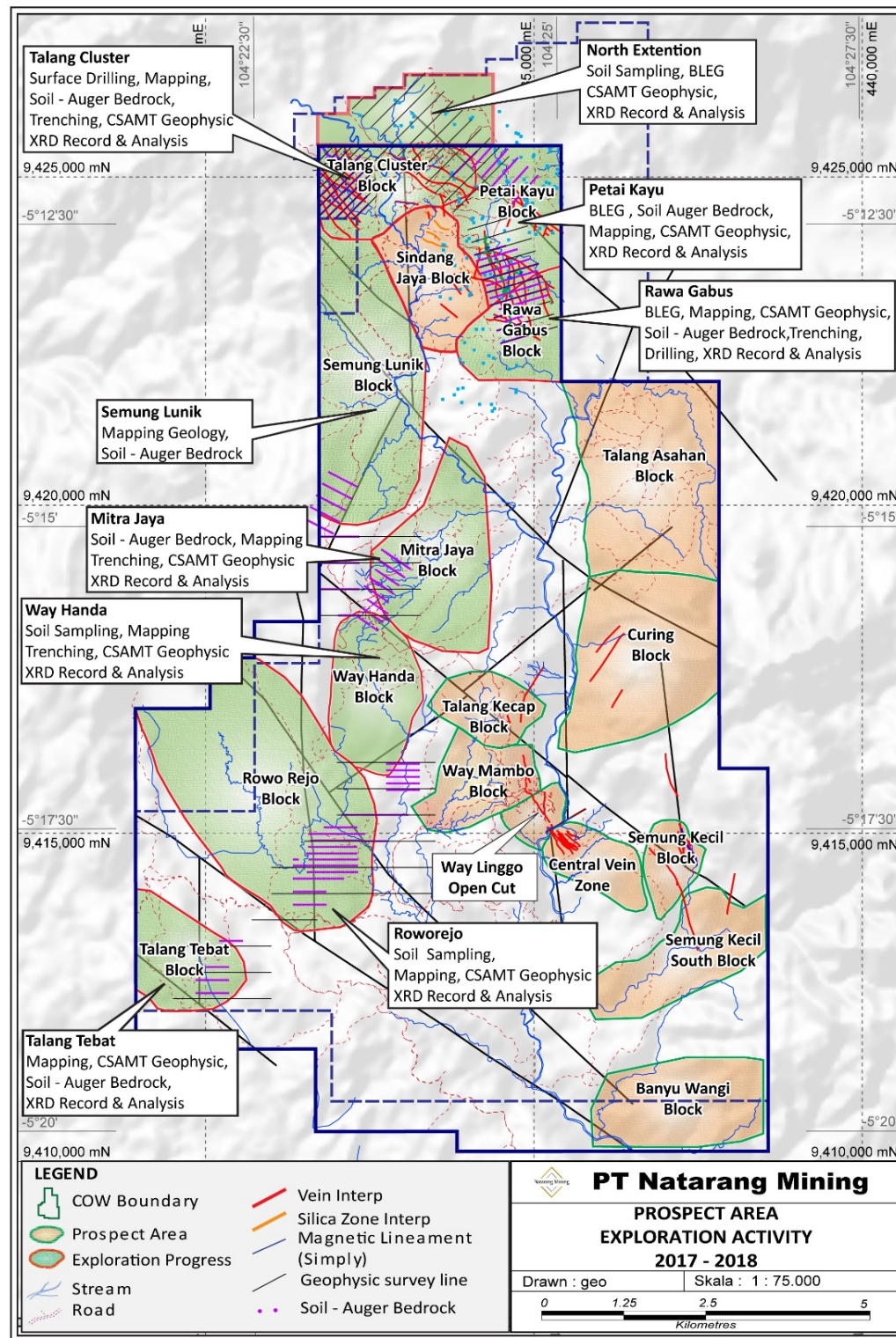


Talang Santo – Potential Pit Expansion



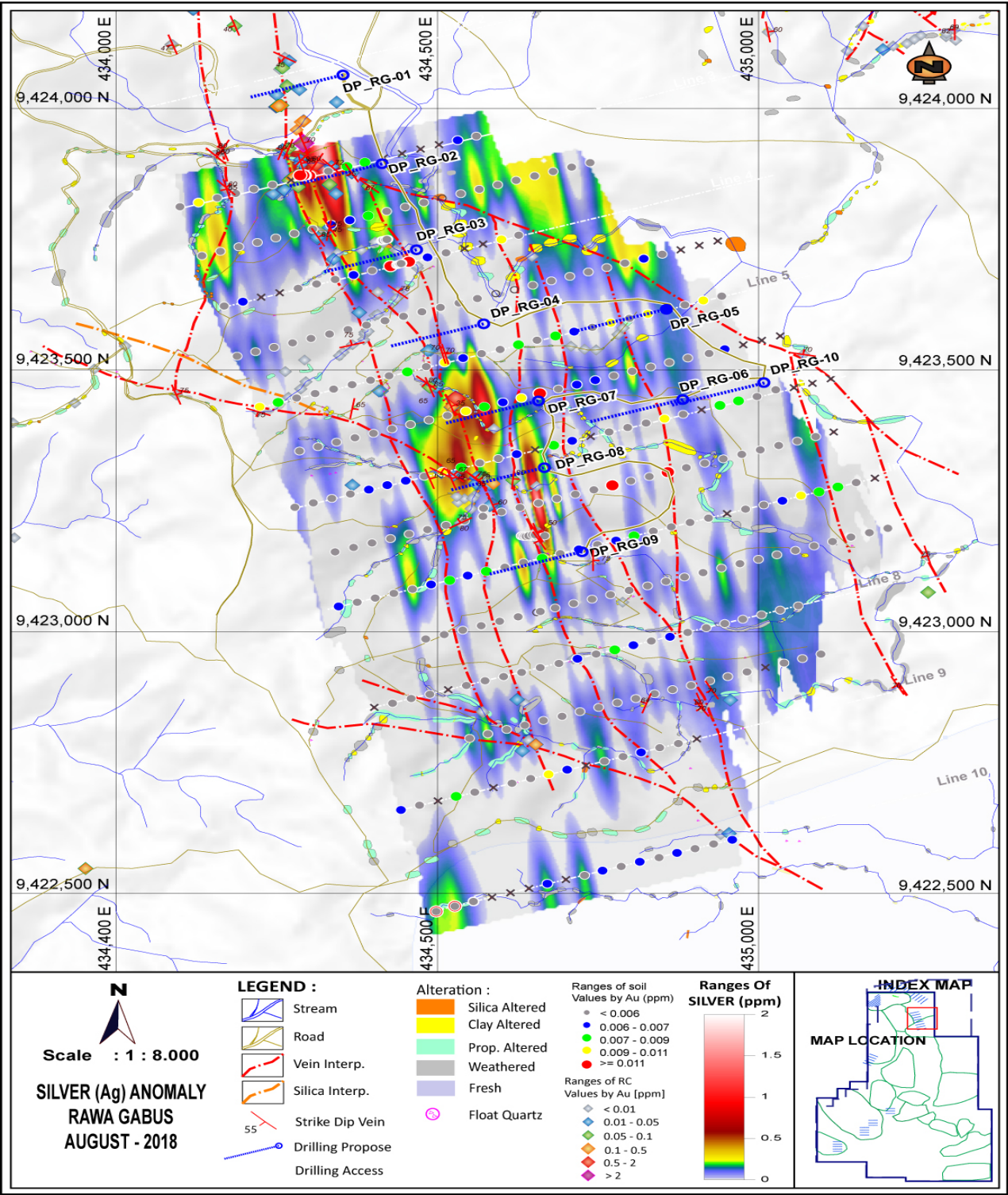
Note – please refer to 30 October 2018 ASX announcement titled 'Drill Results Highlight Potential to Expand Open Pit' for further information.

Focus on Exploration

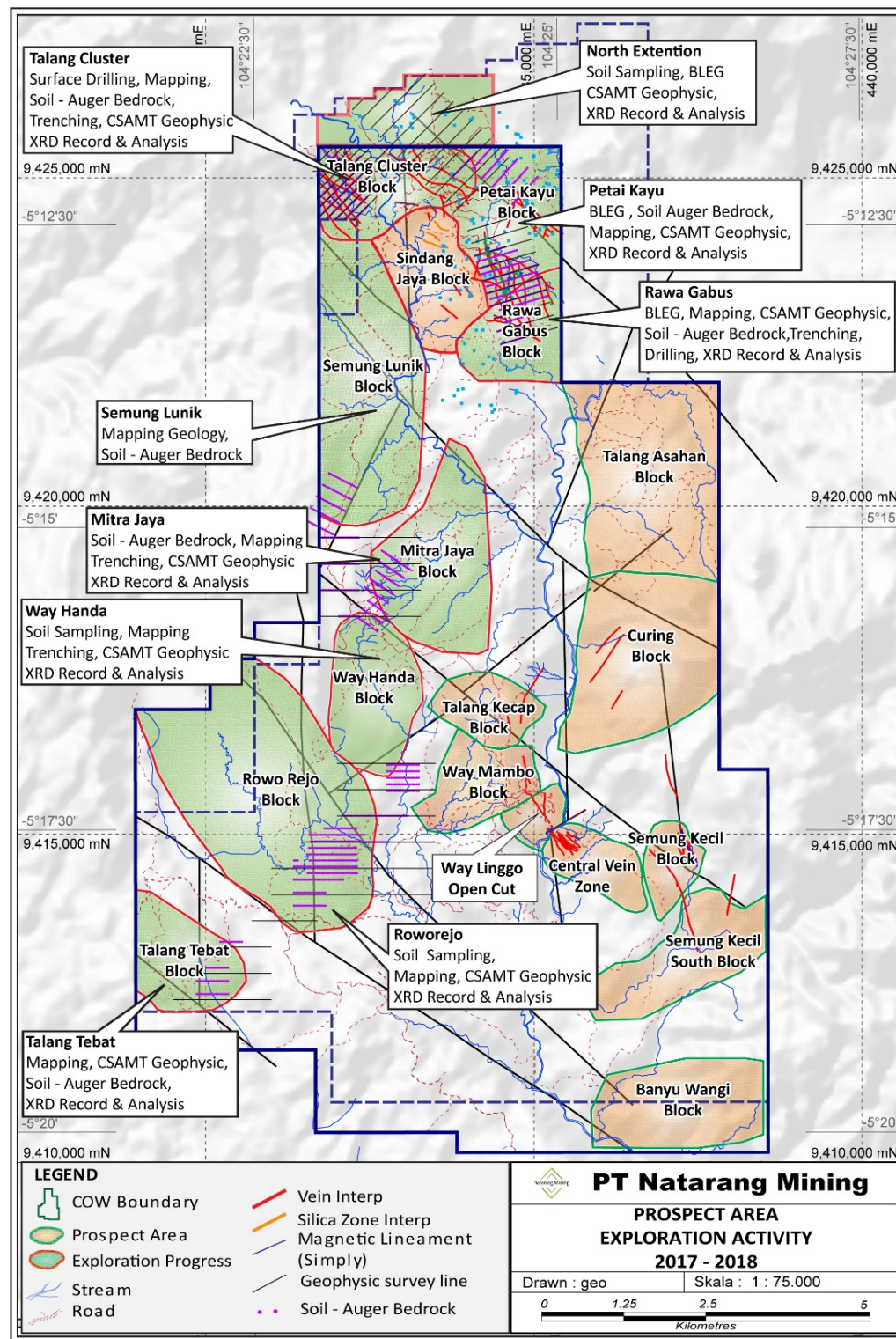


Exploration Target

Rawa Gabus

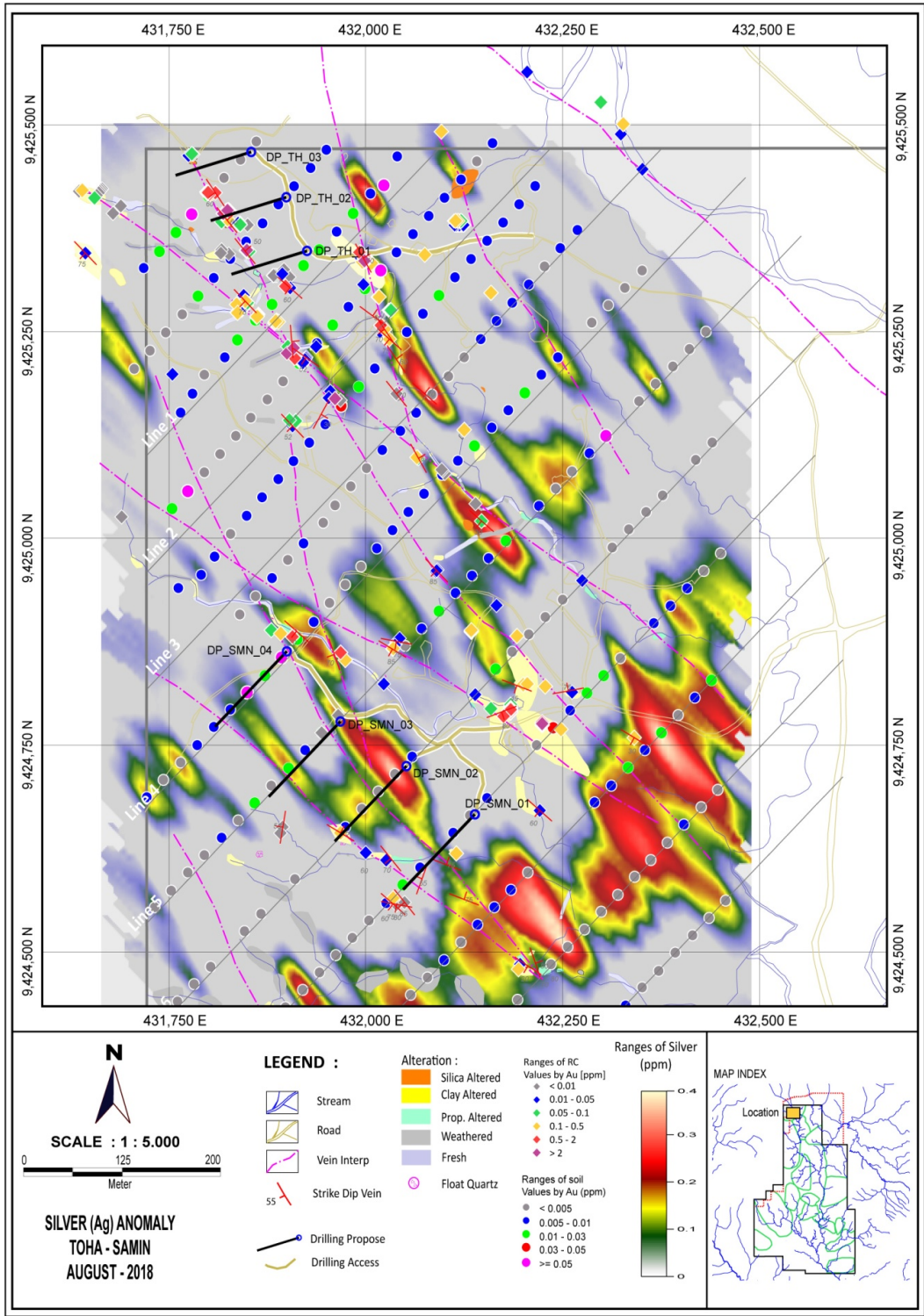


Focus on Exploration



Exploration Target

Toha Samin



Thankyou for your ongoing support

