

ASX:RTR



# Drill Testing a Pipeline of Projects Capable of World Class Discoveries



**AGM Presentation 29<sup>th</sup> November 2019**



# 2019 Highlights and Outlook



## Since January 2019

- Raised \$5.25mil
- 2 new cornerstone investors
- New Exploration Manager – Mark Carder
- \$10m farm out with AIC Mines at Lamil Project for 65%
- Optioned Western Queen High-Grade Gold Project
- Acquired 75% of Earacheedy Zn Project
- Fast tracked drill target generation on 6 projects

- 4 Projects drill tested for discovery
  - \* 2 new mineralised systems discovered
  - \* 2 high-grade mineralisation discoveries

## 8 x Near Term Catalysts to March 2020

- 1 Project - Drill program commenced
- 4 Projects - 5 Drill programs planned
- 2 Projects - Drill targeting



Image: Western Queen Central Deposit

# Corporate Overview



## Capital Structure

Shares on Issue	#	446m
Unlisted Options on Issue <sup>1 2 3 4 5</sup>	#	47.8M
Cash <sup>6</sup>	A\$	\$4.32m
Market Cap	A\$	\$28m

1. 9mil 8c options (22 December 2020)
2. 4mil 3c Options (8 September 2020)
3. 14.8mil 15c Options (22 December 2019)
4. 5mil 15c Options (22 December 2022)
5. 15mil Performance Options 20c, 30c, 40c, 50c, \$1 & \$2
6. Cash position not including \$1.2m expected R&D refund

## Board & Management

Shane Sikora	Managing Director
Brett Keillor	Technical Director
Matthew Banks	Non-Executive Director
Michael Smith	Non-Executive Director
Steven Wood	Company Secretary
Mark Carder	Exploration Manager

## RTR Price Chart 12months



## Ownership Analysis

Board and Management	10.58%
Top 20	33.5%

# Pipeline of Projects - Multiple Avenues to Discovery



## Braeside/Barramine Zn-Pb-Cu-AG-Au-V Project

- 60km's of mineralisation
- 14 High priority targets
- **Targets:**  
Large Cu-Au disseminated porphyry deposits along with high grade base metal vein/breccia pipe and epithermal Pb-Zn-Ag-In+/- Au deposits.

## Lamil Cu-Au Project

- \$10M farm out with AIC Mines (ASX:AIC) located in Paterson Province
- **Target:**  
Stratiform base metal and Telfer Cu-Au deposit types.

## Western Queen Au Project

- Historic production of 880,000t @ 7.6 g/t Au for 214,000oz, remaining 962,000t @ 3.9 g/t Au for 120,000oz
- High-grade gold open down plunge (underground mined grade of 10.32 g/t Au) with intercepts 6.3m @ 36.09 g/t Au from 305.7m & 11.8m @ 16.08 g/t Au from 340.4m
- **Target:**  
Additional underground high-grade gold and near surface gold resources

## Long Lake Ni-Cu-PGM-Co Project

- Fieldwork has highlighted Sudbury Breccia and quartz diorite (known host for Sudbury Basin deposits) occurrences over 4km's of strike.
- **Target:**  
Blind Sudbury "Offset Dyke" style massive Ni-Cu-PGM type deposits.



## Munarra Gully Cu-Au-Co Project

- 34km mineralised structure
- Munarra North Cu-Au Prospect - Open with 6kms of strike & High Grade Cobalt Prospect - Open with 10km's of strike
- **Target:**  
Multiple copper-gold bearing mafic (norite) intrusion deposits and High Grade Lateritic Cobalt Deposits

## Earaheedy Zn-Pb Project

- 6m @ 3.91% Zn, and 0.39% Pb & 7m @ 4.85% Zn+Pb hosted in sandstone
- **Target:**  
Large open-pittable flat lying sandstone hosted Zn-Pb deposits.

## Fraser Range Ni-Cu-Au Project

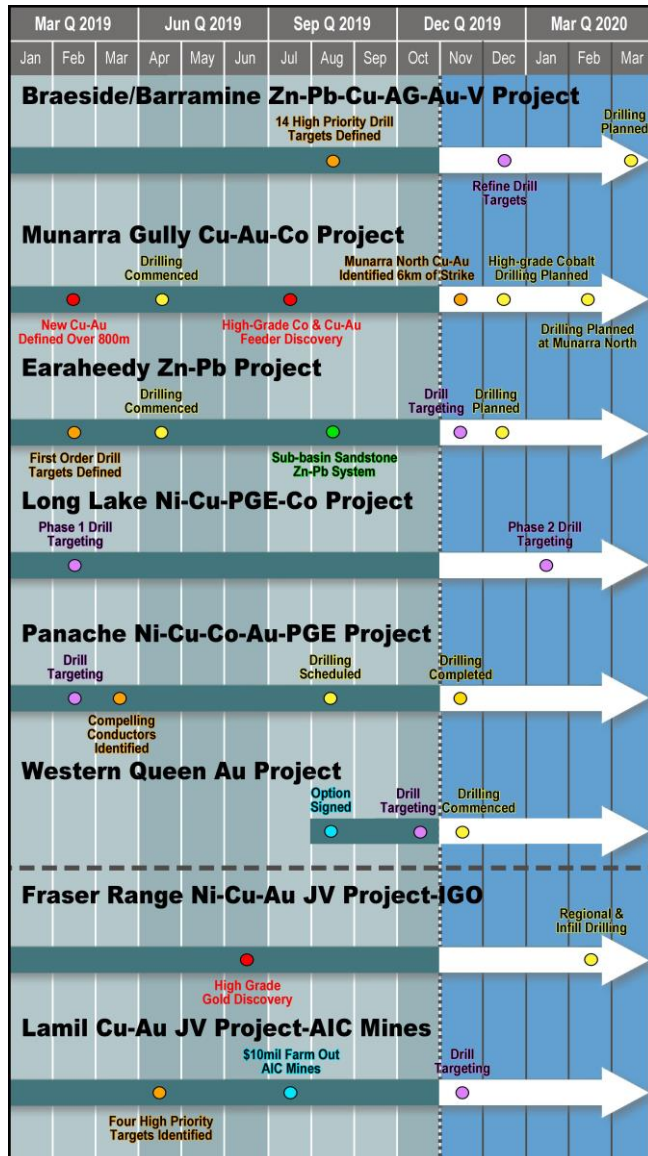
- JV with major Independence Group NL (ASX: IGO)
- High-Grade Au discovered in regional exploration - 25m @ 2.42 g/t Au from 42m including 5m @ 10.85 g/t Au from 49m
- **Target:**  
Massive Ni-Cu type deposits. Palaeo-channel Au and basement Au deposits.

## Panache Ni-Cu-Co-Au-PGE Project

- 8km of prospective strike (Gabbro contact) has been inferred
- **Target:**  
Intrusion hosted disseminated to semi-massive Ni-Cu-PGE-Au & contact related Ni-Cu-Co-PGE sulphide deposits.



# 8 Near Term Catalysts to March 2020



1. Drill down plunge of high-grade Au Western Queen Central Deposit  
**\*Commenced**  
*Western Queen Au Project*
2. JV partner AIC drill targeting Tier 1 Cu-Au deposits Paterson Province  
**\*Commenced**  
*Lamil Cu-Au Project*
3. Drilling planned targeting open-pittable sandstone hosted Zn-Pb deposits  
**\*Planned early December 2019**  
*Earaheedy Zn-Pb Project*
4. Drilling planned following up of high-grade Co discovery  
**\*Planned early December 2019**  
*Munarra Gully Cu-Au-Co Project*
5. Drill targeting Sudbury "Offset Dyke" massive Ni-Cu-PGM deposits  
**\*Planned January 2020**  
*Long Lake Ni-Cu-PGM Project*
6. Drilling planned targeting large mafic hosted copper-gold deposits  
**\*Planned February 2020**  
*Munarra Gully Cu-Au-Co Project*
7. JV Partner IGO drilling following up high-grade Au Discovery Fraser Range  
**\*Planned February 2020**  
*Thunderstorm Ni-Cu-Au Project*
8. Drilling planned targetting epithermal to porphyry deposits  
**\*Planned March 2020**  
*Braeside/Barramine Zn-Pb-Cu-Ag-Au-V Project.*

# Western Queen High-Grade Au Project



- Option to acquire 100% of the Western Queen Project 110km NW of Mt Magnet
- The Project is a high-grade gold system with two mined open pit deposits with a combined historic production of **840,000t @ 7.8 g/t Au for 210,000oz**
- Remaining resources beneath both mined deposits include **962,000t @ 3.9 g/t Au for 120,000oz**
- Located **within 100km radius of three operating gold mills**

Western Queen Gold Deposit							
Deposit	Mineral Resource Estimate (2.0g/t Au cut-off)						
	Indicated		Inferred		Total		
	Tonnes t	Au g/t	Tonnes t	Au g/t	Tonnes t	Au g/t	Au ounces
WQ South	243,000	3.5	590,000	2.9	832,000	3.1	83,000
WQ Central	-	-	130,000	9.0	130,000	9.0	38,000
<b>Total</b>	<b>243,000</b>	<b>3.5</b>	<b>719,000</b>	<b>4.0</b>	<b>962,000</b>	<b>3.9</b>	<b>120,000</b>

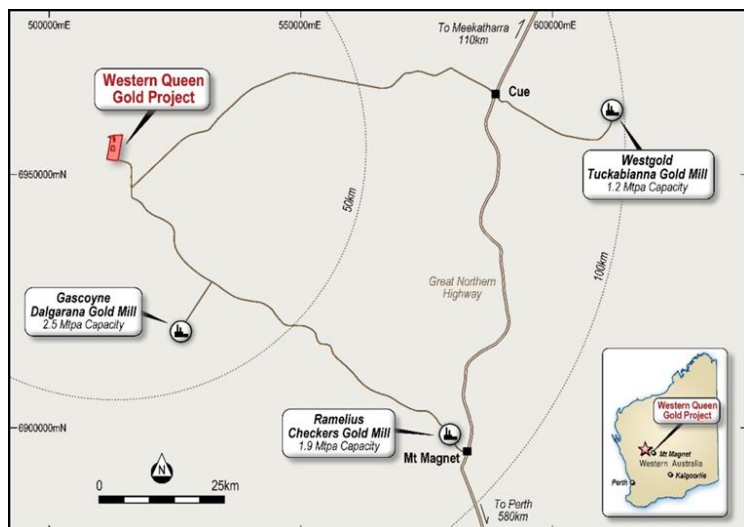


Image : Project Location with Neighbouring Gold Processing Facilities

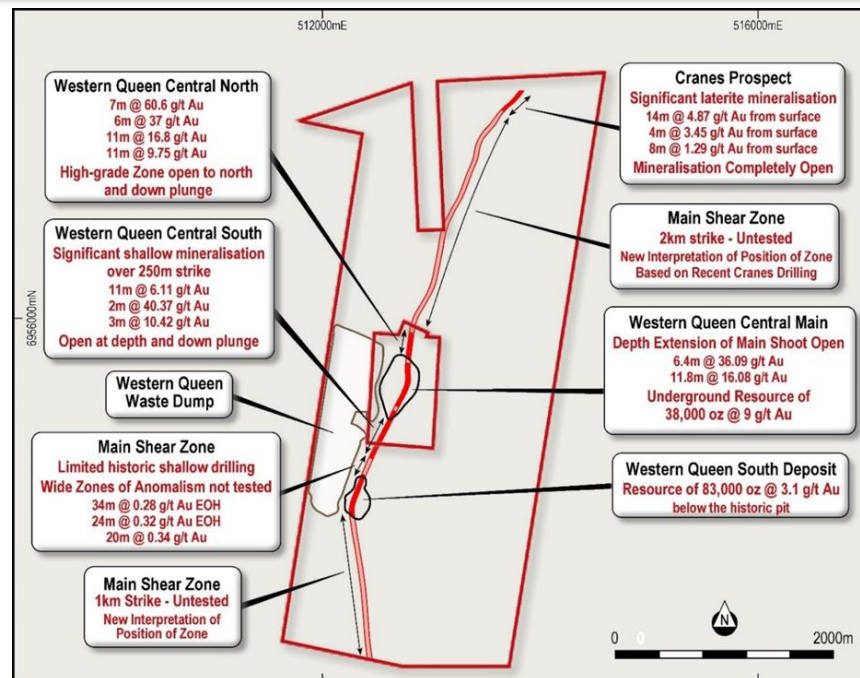


Image: Western Queen Project – Location of High Order Area/Targets

## Western Queen Central – Drill Targets

- Down plunge of main high-grade shoot
- Down plunge and up plunge of newly identified high-grade zones
- North extension to pit - 200m strike – open to the north and at depth
- South extension to pit - 250m strike – open to the south and at depth

## Western Queen South – Drill Targets

- Near pit extensions

## Cranes Prospect – Drill Targets

- Completely open 200m strike – high-grade laterite and basement

## Main Shear Zone – Drill Targets

- Between Western Queen Central and Cranes – 2km strike
- South of Western Queen South – 1km strike
- Central Zone between Western Queen Central & Western Queen South

# Western Queen Central Main Deposit



**Western Queen Central - Deep RC commenced drill testing** targeting the down plunge position of the main shoot of the Western Queen Central pit

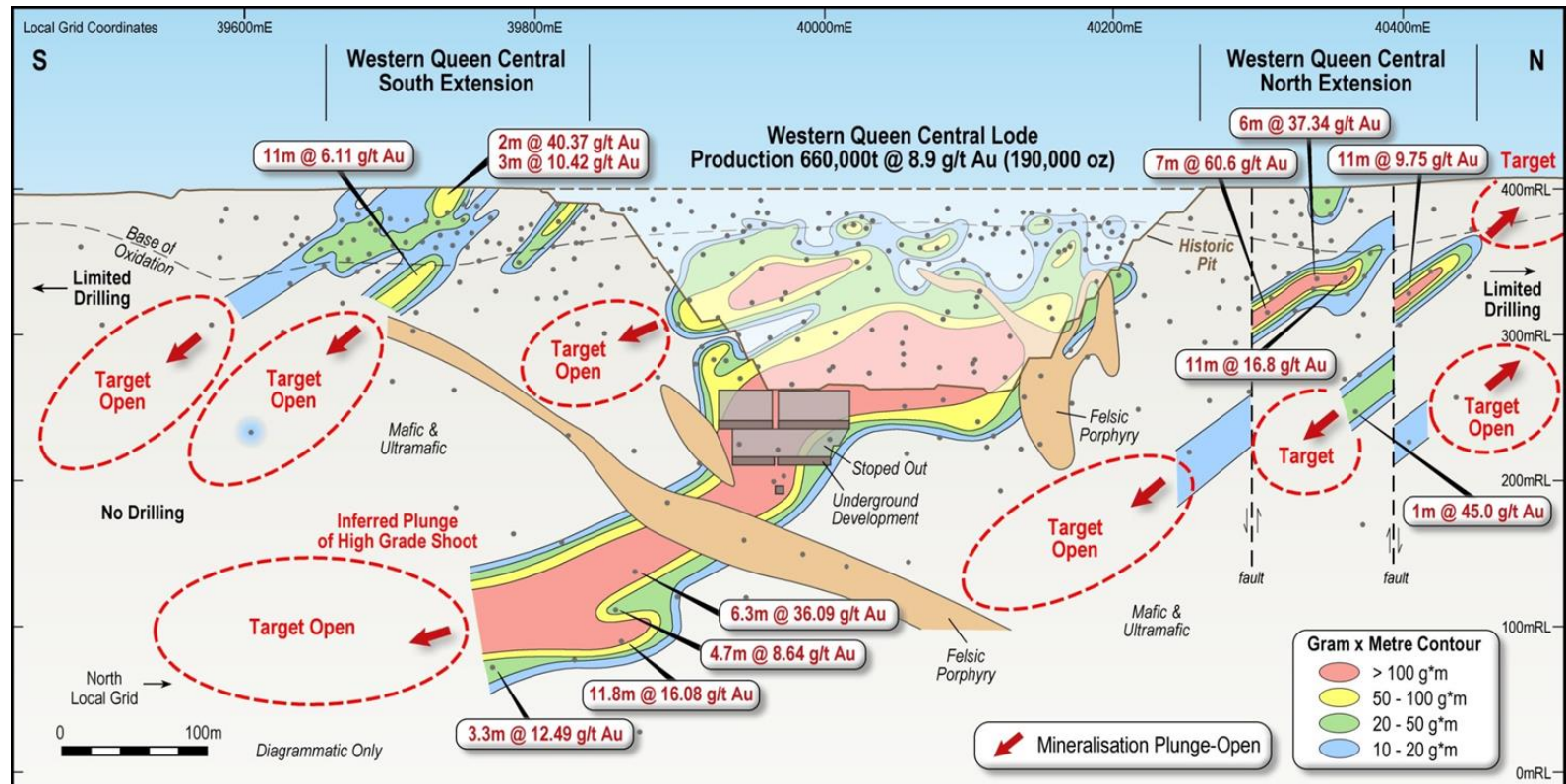
\* High-grade gold is open down plunge - **6.3m @ 36.09 g/t Au from 305.7m & 11.8m @ 16.08 g/t Au from 340.4m**

**Western Queen Central North Extension – RC drilling commenced** testing for extensions to high-grade mineralisation north of Western Queen Central

\* High-grade gold is open down plunge, up plunge and north along strike - **7m @ 60.6 g/t Au from 70m and 6m @ 37.34 g/t Au from 50m**

**Western Queen Central South Extension – RC drilling commenced** testing for extensions to the shallow mineralisation south of the Western Queen Central historic pit

\* High-grade gold is open down plunge and south along strike - **2m @ 40.37 g/t Au from 4m and 3m @ 10.42 g/t Au from 1m**



**Image – Long Section highlighting Western Queen Central South, Central and North Extension – Multiple Drill Targets**



# Earaheedy Zn-Pb Project

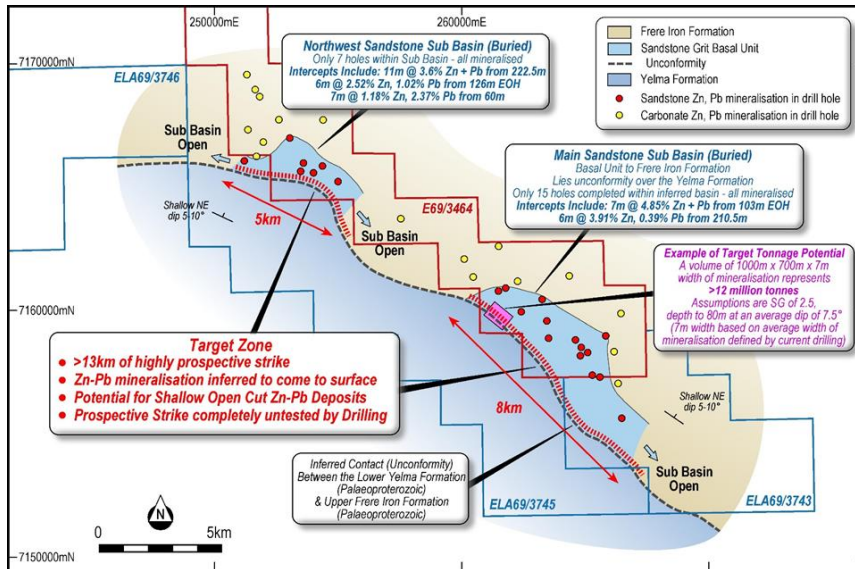


Image – Highlighting the two sandstone sub basins with over 13kms of shallow drill target zones and new applications.

- Acquired 75% of E69-3464 from Zenith Minerals (ASX: ZNL) - RTR 100% Applications
- Rumble drilling identified an **unrecognised sandstone unit that hosts the higher grade Zn-Pb situated above the recognised mineralised dolomite unit** which holds the lower grade MVT Zn mineralisation (Zn horizon - 20km by 3.5km)
- Rumbles new target is large tonnage, flat lying, near surface (open pittable) sandstone hosted Zn-Pb deposits on the western margin where mineralisation is inferred to come to surface and has no previous drilling - **13kms of strike in two shallow sandstone sub basins**
- Only fifteen (15) drill holes have been completed within the main sandstone sub basin – **all are mineralised with over half ending in mineralisation**. Drilling intercepts include:
  - 7m @ 4.85% Zn + Pb from 103m EOH in sandstone
  - 6m @ 3.91% Zn, 0.39% Pb from 210.5m in sandstone

## Next Steps

- A wide spaced shallow vertical RC drilling - **Planned early December 2019**

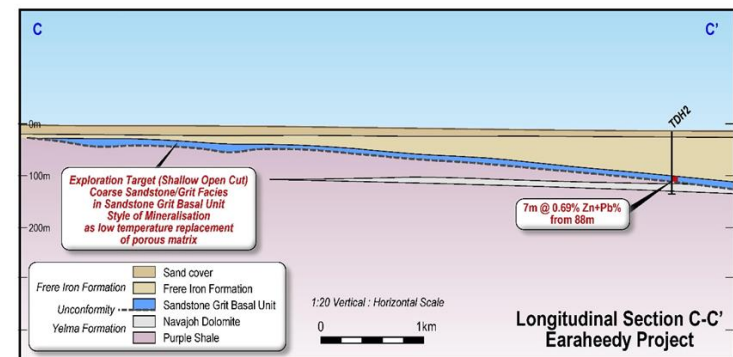
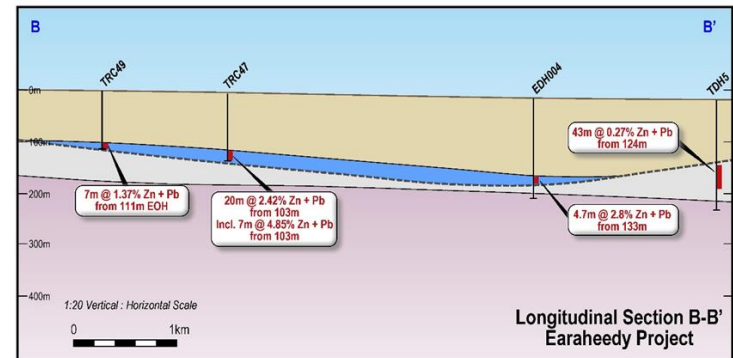
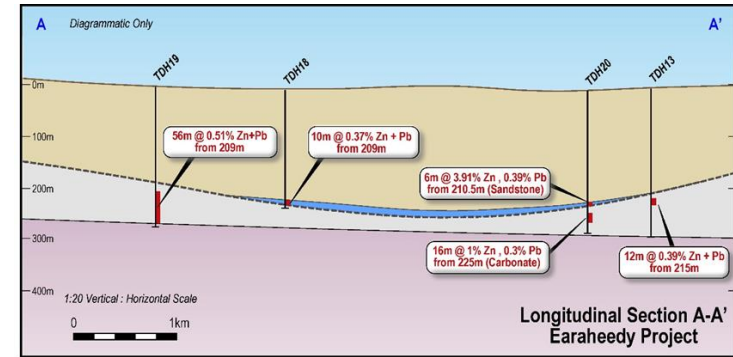
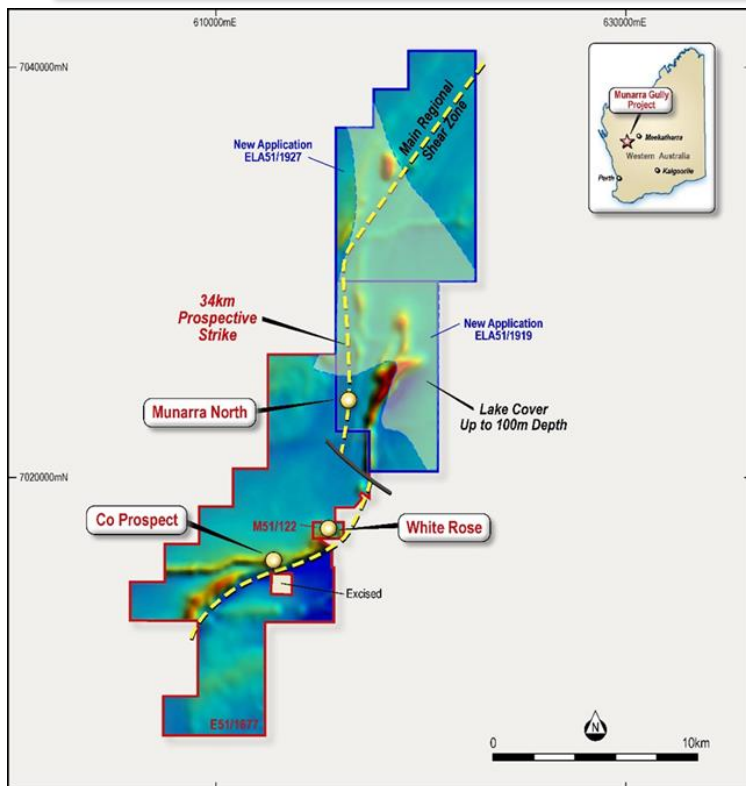


Image – Longitudinal Sections highlighting higher grade Zn-Pb in Sandstone unit above Dolomite



# Munarra Gully 34kms strike and Co Prospect



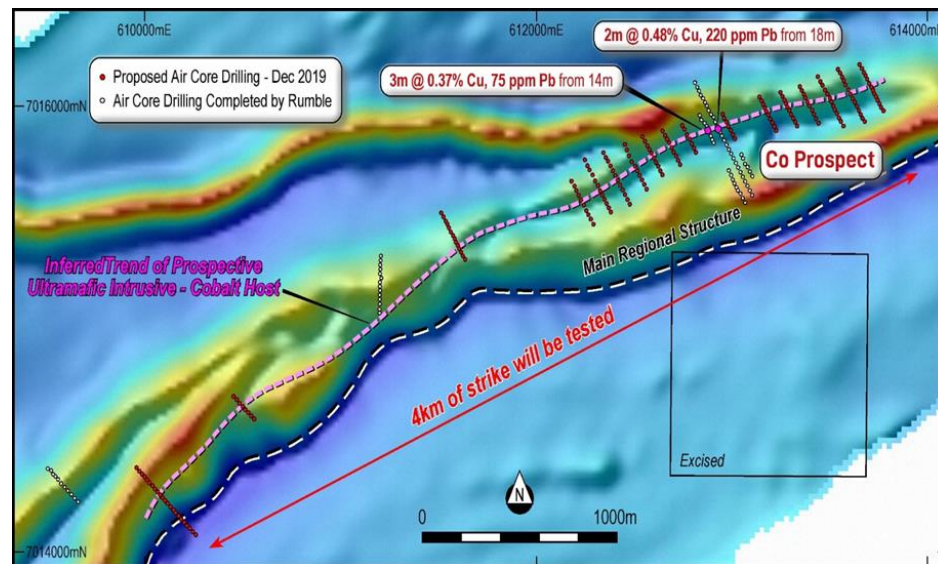
Image—Munarra Gully Project—Location of Prospect over Regional Magnetics

## High-Grade Cobalt-Platinum Prospect

- Reconnaissance air core drilling discovered significant shallow high-grade lateral Co-Pt mineralisation. Intercepts included:
  - 3m @ 0.37% Co, 75 ppb Pt from 14m
  - 2m @ 0.48% Co, 220 ppb Pt from 18m
  - 2m @ 0.20% Co, 203 ppb Pt from 11m
  - 1m @ 0.55% Co, 382 ppb Pt from 13m
- Airborne magnetics and surface geochemistry completed by Rumble has outlined **up to 10km strike**

## Next Steps

- Air core drilling to scope shallow high-grade cobalt mineralisation testing 4km of strike – **Planned early December 2019**



Image—Co Prospect—Location of Planned Drilling (Dec 2019) over Magnetics

- Ongoing interpretation and evaluation has identified a regional structural zone as the main control for **significant copper, gold and cobalt mineralisation within the Munarra Gully Project**.
- The **mineralised structure** is interpreted to extend over **34 km** and **significantly upgrades the prospectivity for large mafic hosted copper gold deposits**
- Three significant prospects associated with the structure are the **Munarra North Cu-Au, White Rose Cu-Au and Co Prospects**

# Munarra North Cu-Au Prospect



- Cu-Au Ag defined **over 1.2km** and Cu anomalism occurs **over a strike of 6km** - **completely open**
- The **copper bearing mafic intrusion** is **150m wide** similar to White Rose which is constrained to a strike length of 350m, however at Munarra North the **large scale tonnage potential** is **compelling with over 6km's of strike** and **completely open**
- **Important:** Historic exploration focused on gold with limited partial copper assaying completed on 5 diamond drill holes (also some very limited RC holes) at Munarra North. Historic Cu-Au-Ag intercepts (partial) include:
  - 8m @ 1.31% Cu, 0.83 g/t Au from 104m
  - 5m @ 1.7% Cu, 0.82 g/t Au, 21.2 g/t Ag from 139m
  - 8m @ 0.52% Cu, 4.24 g/t Au, 11.75 g/t Ag from 161m
  - 3m @ 0.96% Cu, 0.67 g/t Au, 20 g/t Ag from 203m

Significant Au mineralisation (not tested for Cu) including:

- 14m @ 2.36 g/t Au from 57m
- 51m @ 0.8 g/t Au from 35m
- 45m @ 0.89 g/t Au from 65m

Broad zones of alteration and anomalous Au (not tested for Cu) including:

- 30m @ 0.89 g/t Au from 90m (EOH)
- 81m @ 0.32 g/t Au from 35m
- 69m @ 0.24 g/t Au from 35m (EOH)

## Next Steps – Munarra North

- Air core drilling 700m south on granted e51-1677 - **Commencing early December 2019**
- Petrophysics on historic core—**Planned for February 2020**
- Upon grant - RC drilling—**Planned for February 2020**

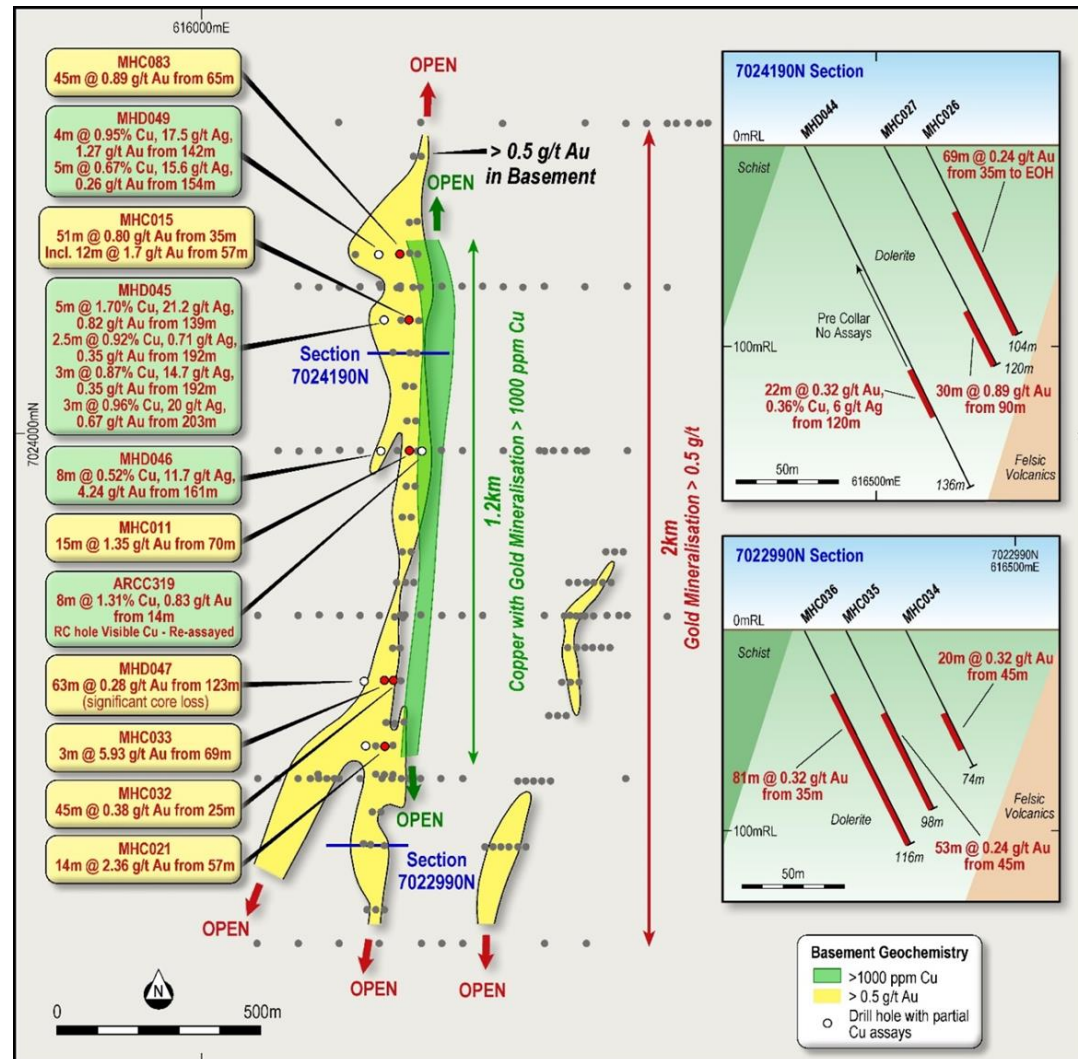


Image: Munarra North Prospect – Drill Hole Location Plan with Significant Results



# Lamil Cu-Au JV Project Paterson Province

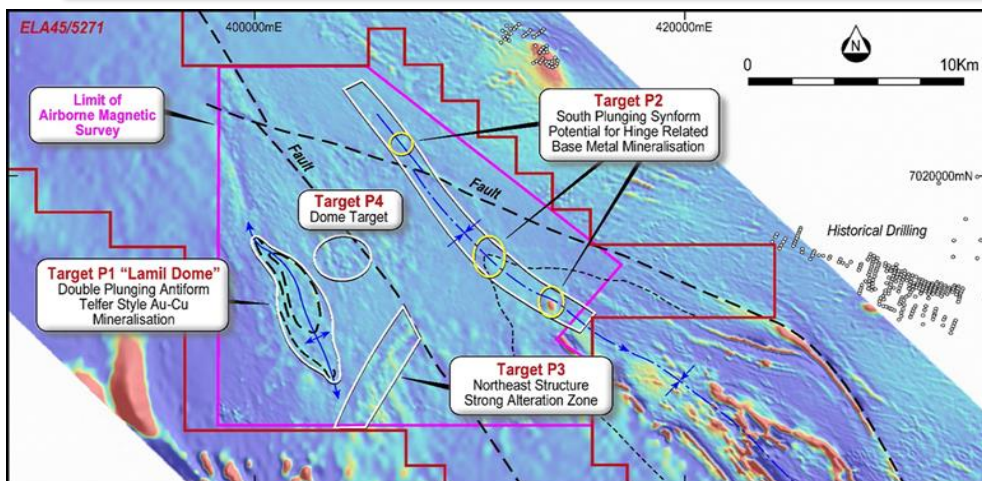


Image: Location of Four High priority targets

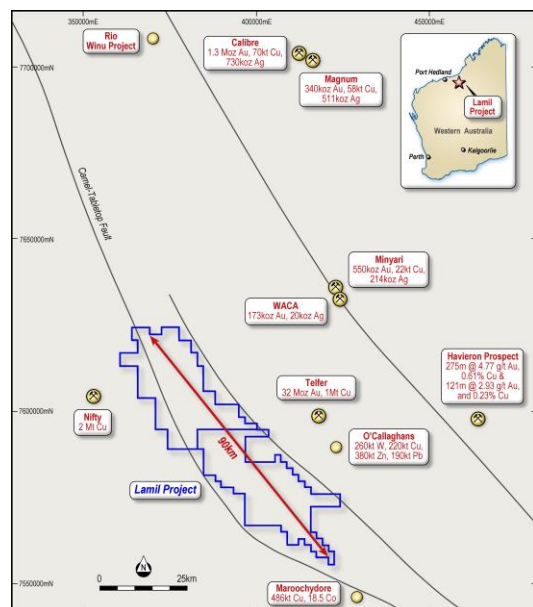


Image: Lamil Project located in between Nifty and Telfer

## About JV Project

- Rumble has a **\$10m Farm Out** for the Lamil Project with AIC Mines (ASX:A1M) to earn 65% within 5 years
- Region hosts the recent **RIO Winu Copper-Gold Discovery** and **Greatland Gold - Havieron Gold-Copper Discovery**

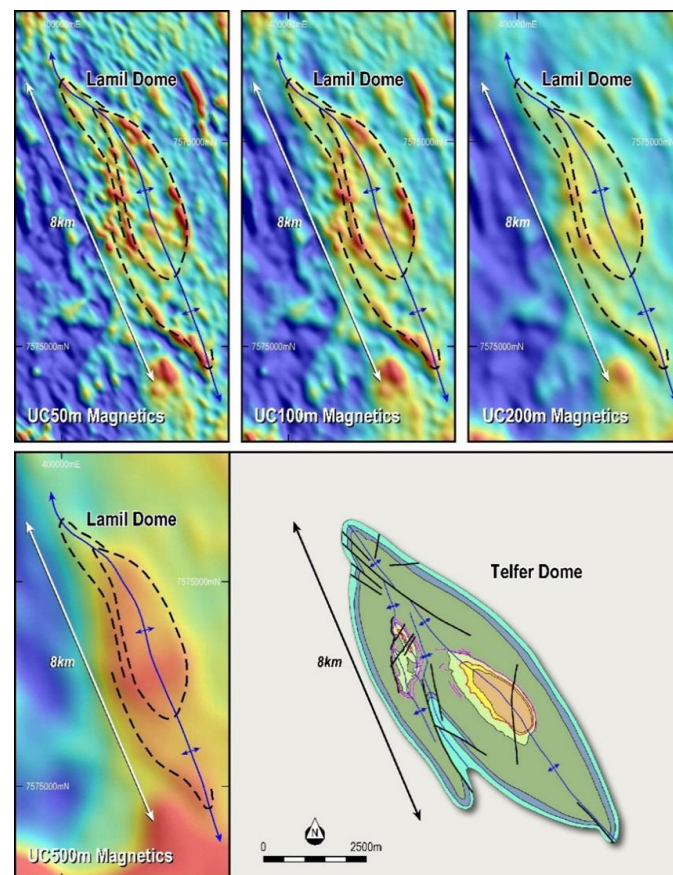


Image: Target P1 – Series of Upward Continued Magnetic Images highlighting the Lamil Dome which has a similar dome size, trend and host rocks to the Telfer Dome

## Main Target

### Lamil dome structure (Target P1 – “Lamil Dome”)

- Target has **similar dome size, trend and host rocks to the Telfer Au – Cu deposit** (32Moz Au, 1Mt Cu resource), a large dome structure which lies 30km to the northeast

## Next Steps

In November 2019 AIC commenced its initial phase of field work which will ultimately guide targeting of future drilling programs including:

- Ground based gravity surveys;
- Ground-based passive seismic surveys; and
- Geochemical orientation surveys.

# Fraser Range Ni-Cu-Au JV Project

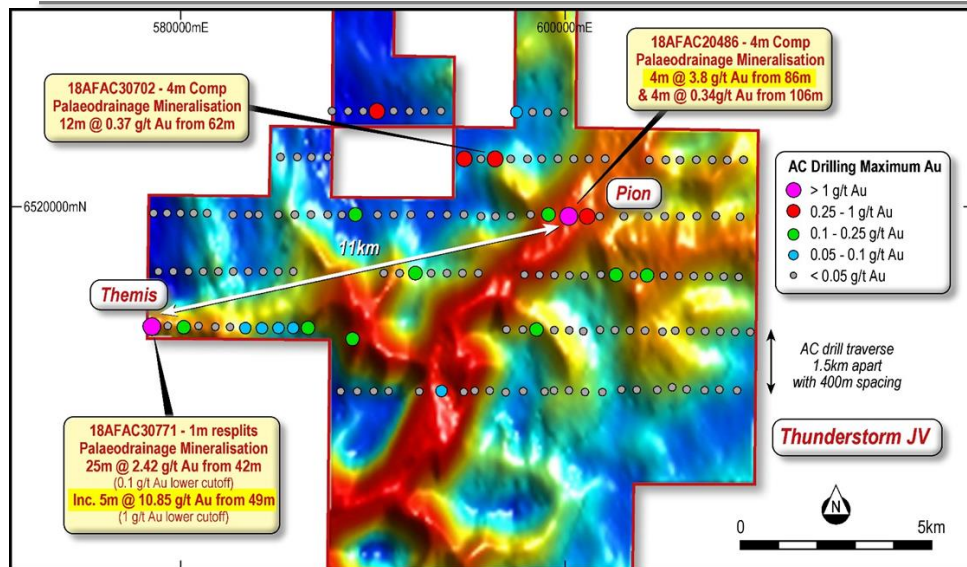


Image: Thunderstorm JV Project – Main Au over Palaeo-drainage (from Spectrem AEM)

## Potential

- The wide spaced reconnaissance drilling program highlighted the potential for **both palaeo-channel and basement gold deposits**.
- Rumble considers the Themis Prospect gold mineralisation as the **most significant gold intercept in the Fraser Range in recent years outside of the Tropicana gold system**.
- The main palaeo-drainage has not been tested between the two main intercepts (18AFAC30771 and 18AFAC20486), a distance of 11km (13km by drainage) highlighting the scale potential.

## Next Steps

- IGO will complete infill drilling around the significant high-grade gold mineralisation - **Planned to commence February 2020**

## About Project

- IGO 70%/RTR 30% - Rumble is free carried to completion of a PFS.

## Thunderstorm JV Project

Significant high-grade gold discovered on wide spaced air core drilling (1.5km by 400m pattern) completed by IGO

- **Themis Prospect** - High-grade gold within a palaeo-drainage and into basement rocks returned:
  - 25m @ 2.42 g/t Au from 42m\* incl 5m @ 10.85 g/t from 49m
- **Pion Prospect** - 13 km further along the palaeo-drainage returned:
  - 4m @ 3.8 g/t Au from 86m

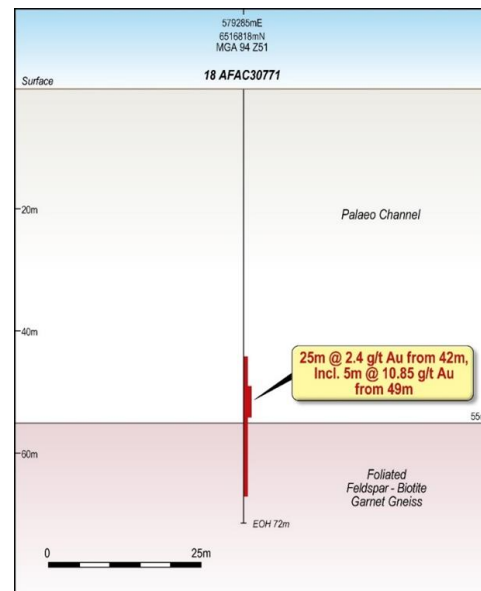


Image: Themis Prospect - Section with Significant High-Grade Au Intercept



# Braeside-Barramine Zn-Pb-Cu-Ag-Au-V Project



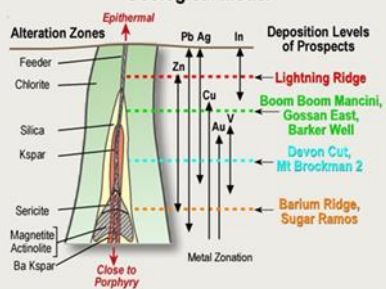
## New Exploration Targets (Aug 2019)

- Moxam's V-Pb** – Very high-grade V and Pb defined over a strike of 400m (Mineralisation is open). Very high-grade grab samples include:  
BR507 – 6.75% V2O5, 48.25% Pb. BR640 – 4.62% V2O5, 16.71% Pb. BR643 – 6.62% V2O5, 31.3% Pb  
BR647 – 3.44% V2O5, 16.64% Pb. BR646 – 2.82% V2O5, 29.68% Pb. BR634 – 3.87% V2O5, 16.34% Pb
- Far North Gossan Zn-Pb** - Strong alteration over 500m. Limited grab sampling has returned Zn of 8.32%, 4.23% and 6.45%. Pb returned 9.34% and 3.4%.
- No Dice Chicun Zn-Pb** - Soil anomaly 1km by 200m with Zn to 560ppm and Pb to 422ppm. Limited grab sampling includes Zn to 1.4%, Pb to 34% and Ag to 88 g/t.
- Barramine Zn South** - Large 2km by 1km soil anomaly Zn to 1200ppm and Pb to 700ppm.
- Barramine Zn North** - 800m by 400m soil anomaly with Zn to 317 ppm (background 50ppm.)
- Camel Hump Cu** - Shear zone over 1.5km in strike. Limited grab sampling includes Cu to 13.4%, Pb to 6.04%, Zn to 1.79%, Ag to 131 g/t.
- Bonecrusher Au-Zn** - Large Au in soil anomaly, 1km by 500m has returned up to 25ppb Au (>5ppb Au threshold). Limited grab sampling has returned Zn to 2.53% and Pb to 1.24%.
- Great Southern Zn** - Soil anomalism over 1.4km (open) returned Zn to 498ppm (40ppm background) and Pb to 293ppm (15ppm background).
- Slimrose Ba Pb Target** - A large alteration zone 600m by 500m is associated with strong Ba >2000ppm and Pb (571ppm) soil anomalism. A single grab sample returned 0.52% Pb.

## High Priority Prospects

- Barker Well Pb** - Wide zone (50m) of strong alteration and sulphides with intercepts: 3m @ 9.16% Pb, 0.43% Zn, 6m @ 6.16% Pb within broad zones of alteration (105m @ 0.78% Pb + Zn) - 5 holes have tested 500m of strike – completely open.
- Gossan East Pb Zn Cu** - Zone of strong mineralisation open to the north (towards Barkers Well). Intercepts: 8m @ 1.23% Zn, 1.27% Pb, 0.14% Cu and 4m @ 3.48% Zn, 0.4% Cu.
- Lightning Ridge Pb Ag In** - Epithermal vein (250m strike faulted). Other veins identified – ongoing exploration. Drill intercepts include 4m @ 6.35% Pb, 14.7 g/t Ag and 4m 5.42% Pb, 0.45% Zn, 19.7 g/t Ag.
- Barium Ridge Ba Pb Au** - large scale Ba-Kspars-Silic alteration. Potential for porphyry related disseminated mineralisation. Some 14km of barium-potassic-silica alteration has been identified. Intercepts include: 58m @ 2.32% BaO (with elevated Pb), 86m @ 1.96% BaO (includes 57m @ 0.22% Pb) and 26m @ 3.84% BaO, 0.18% Pb (includes Au to 0.96 g/t over a metre).
- Sugar Ramos Pb Cu Au** – Intense widespread alteration including sericite and Kspars with magnetite, barium, rubidium and actinolite. Elevated Cu (to 917 ppm) and Au. Proximal to potential porphyry mineralisation.

## Geological Model



- Discovered a **Regional Scale Porphyry** to **Epithermal System** from surface

- Over 60 km of mineralised strike and up to 8km wide

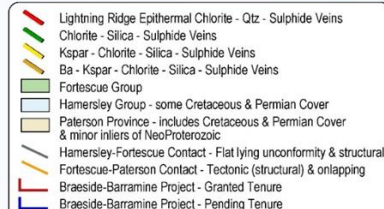


Image: 60kms of mineralisation with Defined Targets Highlighted

## Next Steps

- Refining Drill Targets - **Commenced**
- Drilling of Refined Drill Targets - **Planned March 2020**

# Long Lake Ni-Cu-PGM-Co Project

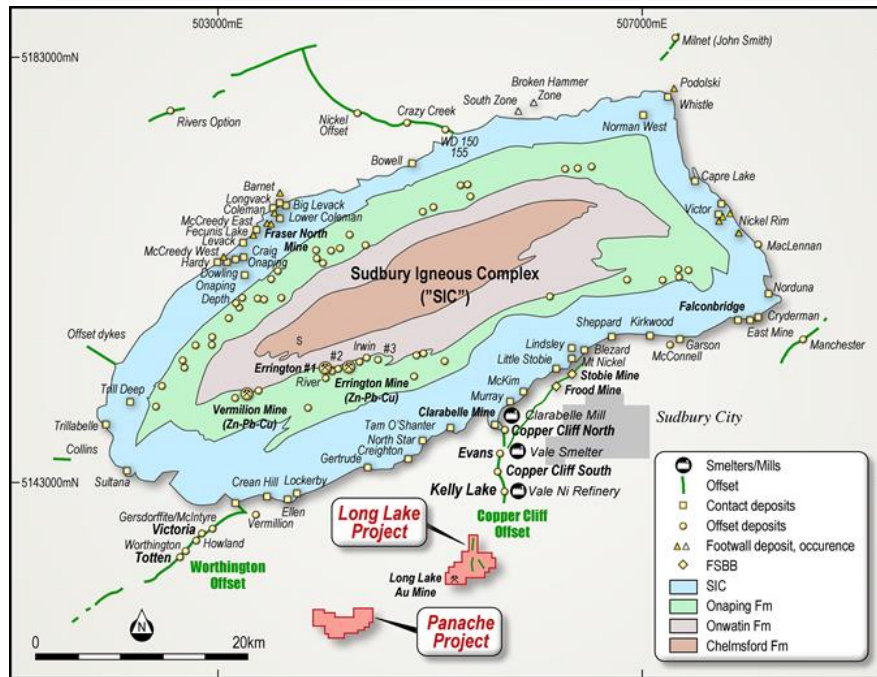


Image: Location of the Long Lake Projects and the Deposit Types of the Sudbury Basin.

## Inferred Extension the 'Copper Cliff Offset Dyke System'

- The Copper Cliff offset Dyke is a world class copper-nickel sulphide system producing some 200 million tonnes of ore - The southernmost deposit discovered to date is at Kelly Lake with a reserve of **10.5 Mt @ 1.77% Ni, 1.34% Cu and 3.6 g/t PGM**.
- 4km of strike at Long Lake is inferred to be the faulted southern extension of the 'Copper Cliff Offset Dyke system'** that has been moved west by later regional faults - some 10km SW of the Kelly Lake Ni-Cu-PGM deposit.

## Next Steps

- Phase 2 GTEM - Ground TEM survey targeting offset dyke – **Planned January 2020**

- Since 1883, the Sudbury Mining Field has been **the second-largest supplier of nickel ore in the world with over 1.7 billion tonnes of past production, reserves and resources**.
- Ni-Cu and PGM bearing sulphide minerals occur in a 60 km by 27 km elliptical igneous body called the Sudbury Igneous Complex ("SIC"). The current model infers the SIC was formed some 1,844 million years ago after sheet-like flash/impact melting of nickel and copper bearing rocks by a meteorite impact. **Important:** Nearly **half of the nickel ore at Sudbury** occurs in **breccias and Offset Dykes** in the footwall rocks of the "SIC".

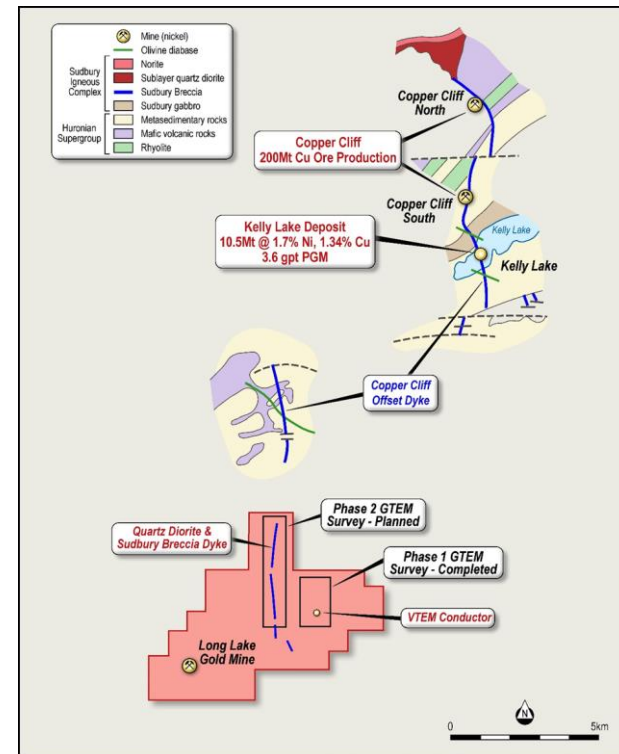


Image: Inferred Copper Cliff Offset Dyke extension moved west—Location of GTEM Surveys



# Investment Summary

---



- Rumble executing pipeline of projects strategy – de risked strategy providing multiple avenues to discovery
- 8 near term catalysts for significant re-rating to March 2019
  - ❖ 1 Project - Drill program commenced
  - ❖ 4 Projects - 5 Drill programs planned
  - ❖ 2 Projects - Drill targeting
- Strong cash position for exploration programs and acquisitions
- Successful Technical Director – twice Prospector of the year
- Highly leveraged to exploration success

# Contacts and Disclaimer



**Office:** Suite 9/36 Ord Street, West Perth WA 6005 Australia

**E:** [Info@rumbleresources.com.au](mailto:Info@rumbleresources.com.au)

**Web:** [www.rumbleresources.com.au](http://www.rumbleresources.com.au)

## Disclaimer;

- This presentation has been prepared by Rumble Resources Limited (Rumble or the **Company**). It contains general information about the Company's activities current as at the date of the presentation. The information is provided in summary form and does not purport to be complete. This presentation is not to be distributed (nor taken to have been distributed) to any persons in any jurisdictions to whom an offer or solicitation to buy shares in the Company would be unlawful. Any recipient of the presentation should observe any such restrictions on the distribution of this presentation and warrants to the Company that the receipt of the presentation is not unlawful. It should not be considered as an offer or invitation to subscribe for or purchase any securities in the Company or as an inducement to make an offer or invitation with respect to those securities. No agreement to subscribe for securities in the Company will be entered into on the basis of this presentation or any information, opinions or conclusions expressed in the course of this presentation. This presentation is not a prospectus, product disclosure document or other offering document under Australian law or under any other law. It has been prepared for information purposes only. This presentation contains general summary information and does not take into account the investment objectives, financial situation and particular needs of any individual investor. It is not financial product advice and investors should obtain their own independent advice from qualified financial advisors having regard to their objectives, financial situation and needs. Rumble nor any of their related bodies corporate is licensed to provide financial product advice.
- This presentation and information, opinions or conclusions expressed in the course of this presentation contains forecasts and forward looking information. Such forecasts, projections and information are not a guarantee of future performance, involve unknown risks and uncertainties. Actual results and developments will almost certainly differ materially from those expressed or implied. There are a number of risks, both specific to Rumble, and of a general nature which may affect the future operating and financial performance of Rumble, and the value of an investment in Rumble including and not limited to title risk, renewal risk, economic conditions, stock market fluctuations, manganese demand and price movements, timing of access to infrastructure, timing of environmental approvals, regulatory risks, operational risks, reliance on key personnel, reserve estimations, native title risks, foreign currency fluctuations, and mining development, construction and commissioning risk.
- You should not act or refrain from acting in reliance on this presentation, or any information, opinions or conclusions expressed in the course of this presentation. This presentation does not purport to be all inclusive or to contain all information which its recipients may require in order to make an informed assessment of the prospects of Rumble. You should conduct your own investigation and perform your own analysis in order to satisfy yourself as to the accuracy and completeness of the information, statements and opinions contained in this presentation before making any investment decision. Recipients of this presentation must undertake their own due diligence and make their own assumptions in respect of the information contained in this presentation and should obtain independent professional advice before making any decision based on the information. No representation or warranty, express or implied, is made in relation to the fairness, accuracy or completeness of the information, opinions and conclusions expressed in the course of this presentation. To the maximum extent permitted by law, no representation, warranty or undertaking, express or implied, is made and, to the maximum extent permitted by law, no responsibility or liability is accepted by the Company or any of its officers, employees, agents or consultant or any other person as to the adequacy, accuracy, completeness or reasonableness of the information in this presentation. To the maximum extent permitted by law, no responsibility for any errors or omissions from this presentation whether arising out of negligence or otherwise is accepted. An investment in the shares of the Company is to be considered highly speculative.
- The exploration targets or conceptual exploration targets in this presentation or expressed during the course of this presentation are subject to completion of the necessary feasibility studies, permitting and execution of all necessary infrastructure agreements. In relation to any statements pertaining to future exploration targets or conceptual exploration targets, the nature of the exploration target means that the potential quantity and grade is conceptual in nature, that there has been insufficient exploration to define a Mineral Resource and that it is uncertain if further exploration will result in the determination of a Mineral Resource. This presentation and information, opinions or conclusions expressed in the course of this presentation should be read in conjunction with Rumble's other periodic and continuous disclosure announcements lodged with the ASX, which are available on the Rumble website. They involve risk and uncertainties that could cause actual results to differ from estimated results. Forward-looking statements include, but are not limited to, statements concerning the Company's exploration programme, outlook and target sizes. They include statements preceded by words such as "potential", "target", "scheduled", "planned", "estimate", "possible", "future", "prospective" and similar expressions.

## Competent Person Statement:

- The information in this presentation that relates to Exploration Results or Mineral Resources is based on information compiled or reviewed by Mr Brett Keillor, who is a Member of the Australian Institute of Mining and Metallurgy. Mr Keillor has sufficient experience, which is relevant to the style of mineralisation and type of deposit under consideration and to activities undertaken, to qualify as a Competent Person as defined in the 2012 Edition of the "Australasian Code for Reporting of Exploration Results, Mineral Resources and Ore Reserves". Mr Keillor consents to the inclusion in the presentation of the matters based on his information in the form and context in which it appears.
- Refer previous announcements in respect of exploration results dated 26 November 2019, 8 November 2019, 21 November 2019, 21 October 2019, 1 October 2019, 23 August 2019, 22 August 2019, 6 August 2019, 11 July 2019, 1 July 2019, 4 April 2019, 12 March 2019, 12 February 2019, 6 February 2019, 17 December 2018, 27 November 2018, 30 August 2018 and 9 August 2018. The resource for the Western Queen Au Project was disclosed in the ASX announcement dated 6 August 2019. Rumble is not aware of any new information or data that materially affects the information included in that relevant market announcement and that all material assumptions and technical parameters underpinning the estimates in the relevant market announcement continue to apply and have not materially changed.