



# INVESTOR PRESENTATION

JULY 2020



KRAKATOA  
RESOURCES LTD.



## DISCLAIMER

The presentation has been prepared by Krakatoa Resources Limited (Krakatoa, KTA, or the Company) based on information from its own- and third-party sources and is not a disclosure document. No party other than the Company has authorized or caused the issue, lodgement, submission, dispatch or provision of this presentation, or takes any responsibility for, or makes or purports to make any statements, representations or undertakings in this presentation. Except for any liability that cannot be excluded by law, the Company and its related bodies corporate, directors, employees, servants, advisers, agents (Affiliates) disclaim and accept no responsibility or liability for any expenses, losses, damages or costs incurred by you relating in any way to this presentation including, without limitation, the information contained in or provided in connection with it, any errors or omissions from it however caused, lack of accuracy, completeness, currency or reliability or you or any other person placing any reliance on this presentation, its accuracy, completeness or reliability. This presentation is not a prospectus, disclosure document, or other offering document under Australian law or under any other law. It is provided for information purposes and is not an invitation nor offer of shares or recommendation for subscription, purchase or sale in any jurisdiction. This presentation does not purport to contain all the information that a prospective investor may require in connection with any potential investment in the Company. Each recipient must make its own independent assessment of the Company before acquiring any shares in the Company (Shares).

## COMPETENT PERSONS STATEMENT

The information in this presentation is based on and fairly represents information compiled by Mr Jonathan King, consultant geologist, who is a Member of the Australian Institute of Geoscientists and employed by Collective Prosperity Pty Ltd, and is an accurate representation of the available data and studies for the Project. Mr King has sufficient experience relevant to the style of mineralisation and type of deposit under consideration, and to the activity which he has undertaken, to qualify as a Competent Person as defined in the 2012 Edition of the Joint Ore Reserves Committee (JORC) Australasian Code for Reporting of Exploration Results, Mineral Resources and Ore Reserves. Mr King consents to the inclusion in this announcement of the matters based on this information in the form and context in which it appears.

## FORWARD LOOKING INFORMATION

This presentation may contain forward-looking statements that are subject to risk factors associated with gold exploration, mining and production businesses. Forward-looking statements are statements that are not historical facts. Words such as "expect(s)", "feel(s)", "believe(s)", "will", "may", "anticipate(s)" and similar expressions are intended to identify forward-looking statements. It is believed that expectations reflected in these statements are reasonable, but they may be affected by a variety of variables and changes in underlying assumptions which could cause actual results or trends to differ materially, including but not limited to: (i) those relating to the interpretation of drill results, the geology, grade and continuity of mineral deposits and conclusions of economic evaluations, (ii) risks relating to possible variations in reserves, grade, planned mining dilution and ore loss, or recovery rates and changes in project parameters as plans continue to be refined, (iii) the potential for delays in exploration or development activities or the completion of feasibility studies, (iv) risks related to commodity price and foreign exchange rate fluctuations, (v) risks related to failure to obtain adequate financing on a timely basis and on acceptable terms or delays in obtaining governmental approvals or in the completion of development or construction activities, and (vi) other risks and uncertainties related to the Company's prospects, properties and business strategy. Our audience is cautioned not to place undue reliance on these forward-looking statements that speak only as of the date hereof, and we do not undertake any obligation to revise and disseminate forward-looking statements to reflect events or circumstances after the date hereof, or to reflect the occurrence of or non-occurrence of any events.

## AUTHORISED FOR RELEASE

This announcement was authorised for release by the Board of Directors.

# LEVERAGE TO GOLD IN THE LACHLAN FOLD BELT

**3 projects covering 780km<sup>2</sup>**

**in the World Class Lachlan Fold Belt: host to >80 Moz of gold and >13 Mt of copper<sup>1</sup>**

## DRILL READY – BELGRAVIA PROJECT

**Multiple Porphyry Gold-Copper targets in prime porphyry country**

- Bell Valley - 6km of prominent magnetic low – also contains the adjacent Copper Hill Deposit (890,000oz gold & 310,000t copper)
- Sugarloaf - **Rock chips up to 5.19g/t Au and 1.73% Cu**  
Characteristic magnetic 'doughnut' with 2 DGPR polygons striking over 900m and 500m

## Aggressive yet systematic exploration

- Highly experienced technical team led by former Newcrest Geologist Ian Cooper
- Drill programs imminent at both Turon and Belgravia

**Massive leverage to any gold discovery**

## DRILL READY – TURON PROJECT

**Extensive Shallow, high-grade gold targets**

- 2 early target areas covering a strike of 1.6km and 2.4km respectively with consistent **high grade rock chips up to 1,535g/t Au**
- Multiple historical drilling anomalies untested e.g. 10m @ 1.74g/t Au from surface to EOH
- Priority DGPR targets outlined at shallow depths

LACHLAN FOLD BELT

# CORPORATE OVERVIEW

MARKET CAP

**\$19.9M\***

\* Post Placement at 8c per share

CASH

**\$3.1M\***

SHARES ON ISSUE

**248.75M\***

LISTED OPTIONS ON ISSUE

**85M** 5c, exp 31 Jul 2021 (ASX: KTAOC)

UNLISTED OPTIONS – BOARD & TECHNICAL TEAM

**5M**

7.5c, exp 31 Jul 2021

**12M**

10c, exp 24 Oct 2020

## BOARD OF DIRECTORS & TECHNICAL TEAM

**Colin Locke** Executive Chairman

**David Palumbo** Non-Executive Director

**Tim Hogan** Non-Executive Director

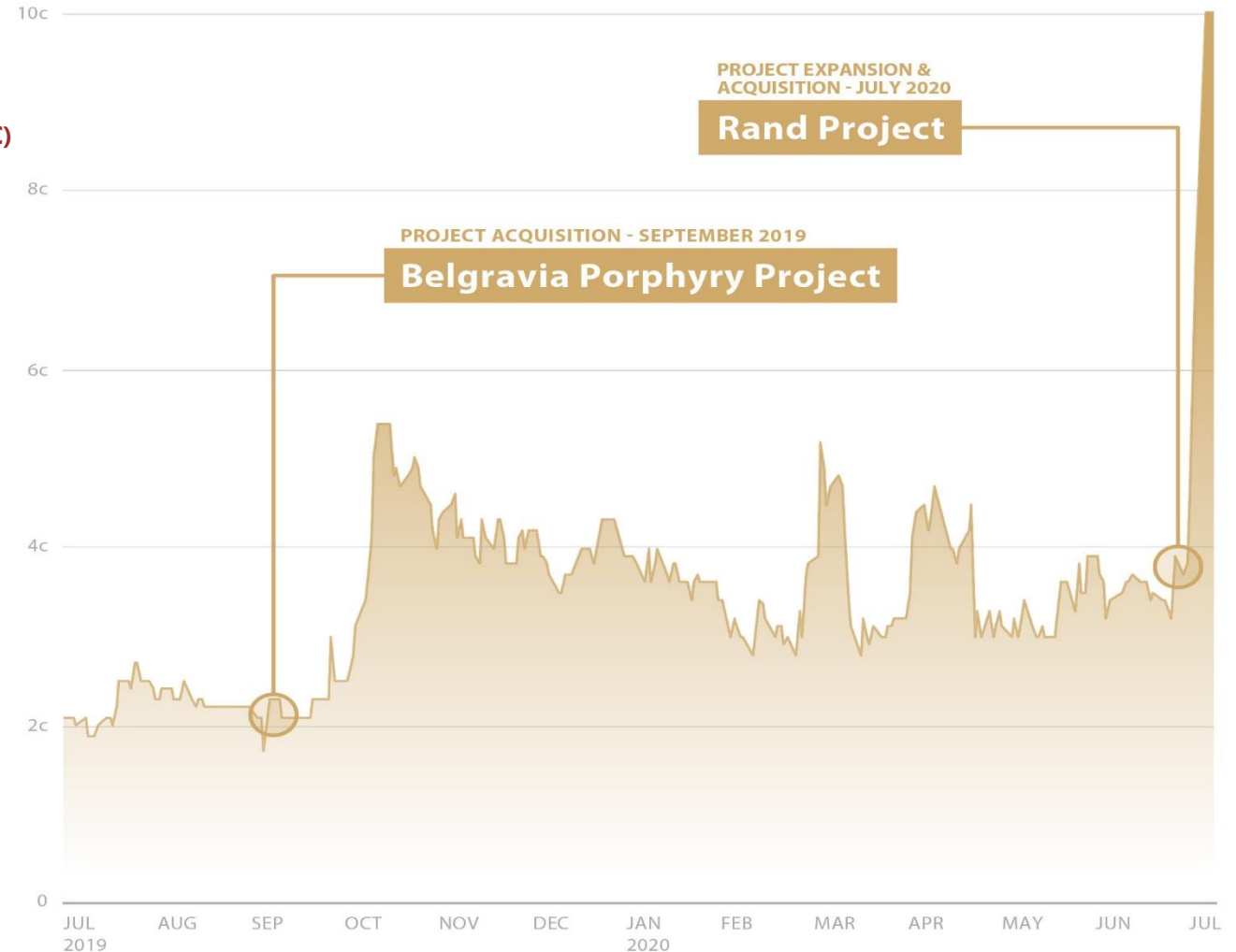
**Ian Cooper** Geologist

**Jono King** Geologist

**Paul McMillen** Geophysicist

**Stephen Woodham** Landholder Liaison & Exploration Manager

## 12 MONTH SHARE PRICE PERFORMANCE





# PROJECT LOCATIONS

KRAKATOA REPOSITIONED IN 2019 WITH A FOCUS ON VALUE ACCRETIVE GOLD ACQUISITIONS IN THE WORLD CLASS LACHLAN FOLD BELT (LFB)

Krakatoa has secured 3 highly prospective gold projects covering a range of deposit-styles and scales, each capable of delivering major upside to shareholders:

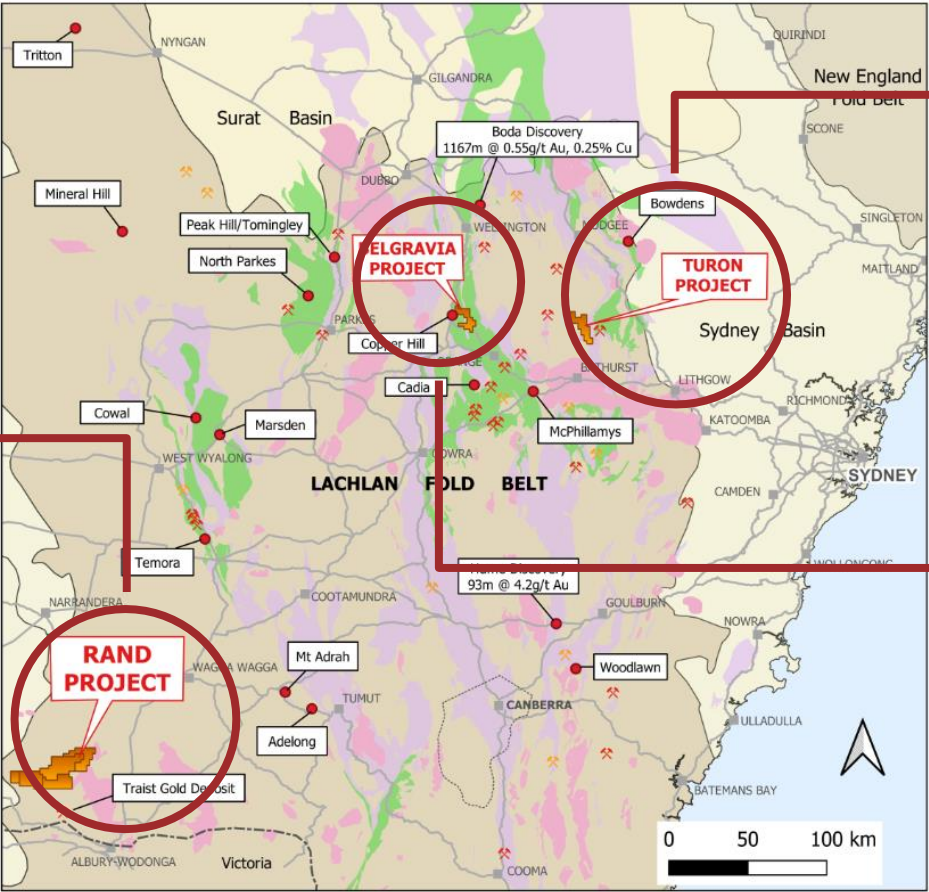
## RAND PROJECT

Shear-hosted and intrusion-related gold (e.g. Mallina - De Grey)

Direct application, July 2020

## OTHER

Value accretive gold acquisition/ application opportunities in LFB continually under review



## TURON PROJECT

High grade turbidite-hosted gold (e.g. Fosterville - Kirkland Lake)






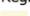





Direct application, granted February 2020

## BELGRAVIA PROJECT

Cu-Au Porphyry & skarn (e.g. Cadia - Newcrest)

Acquired in September 2019 for ~ \$500K (10m shares @ 2c & \$300K Cash)

### Legend

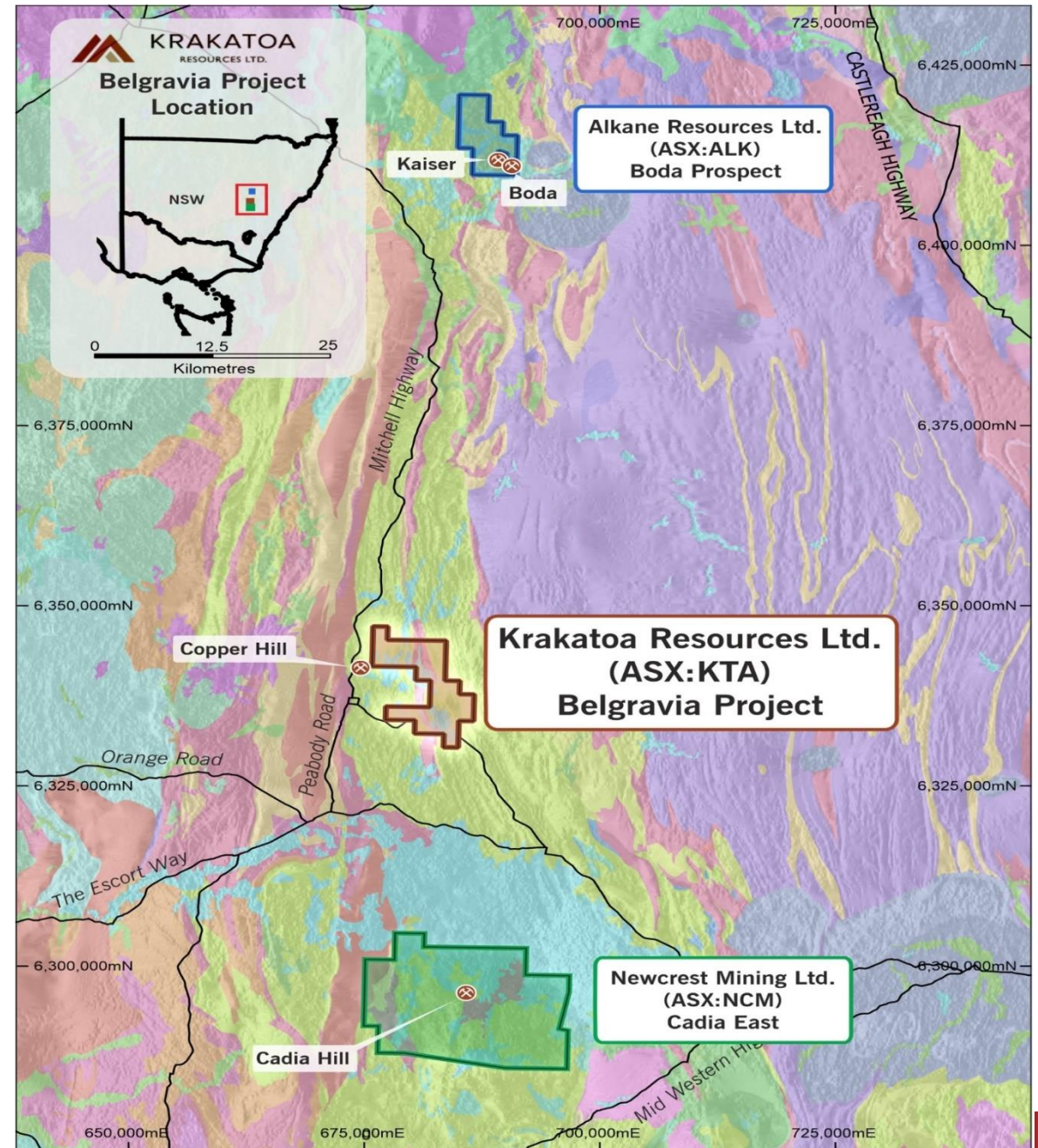
- |  |  |   |
|--|--|---|
|  KRAKATOA PROJECTS              |  Lachlan Orogen           |  Regional Elements     |
|  Major mines/recent discoveries |  I-type Granites          |  Younger Basins        |
|  Major Cu deposits              |  Silurian Belts           |  Palaeozoic Fold Belts |
|  Major Au deposits              |  Ordovician Macquarie Arc |   |

# MOLONG VOLCANIC BELT - A WORLD CLASS PORPHYRY PROVINCE

## BELGRAVIA PROJECT (KTA 100%)

### East Lachlan Region, LFB

- The largest porphyry province in Australia – host to one of Australia's largest gold mining operations, Newcrest's Cadia Valley Operations<sup>2</sup>
- The MVB is host to several large gold-rich porphyry discoveries with Cadia to the south, Boda to the north and Copper Hill adjacent
- Gold-copper porphyry deposits typically occur in clusters providing considerable potential for more discoveries
- The MVB is predominantly a north-south trending system composed of fault-bounded belts of andesitic lavas, tuffs and limestones, intruded by rare, stock-like monzonite, diorite, tonalite and dacite bodies from Ordovician to early Silurian times
- Sandfire, Freeport McMoRan, Newmont, Newcrest Mining, FMG, Evolution Mining and Alkane: all active in the East Lachlan



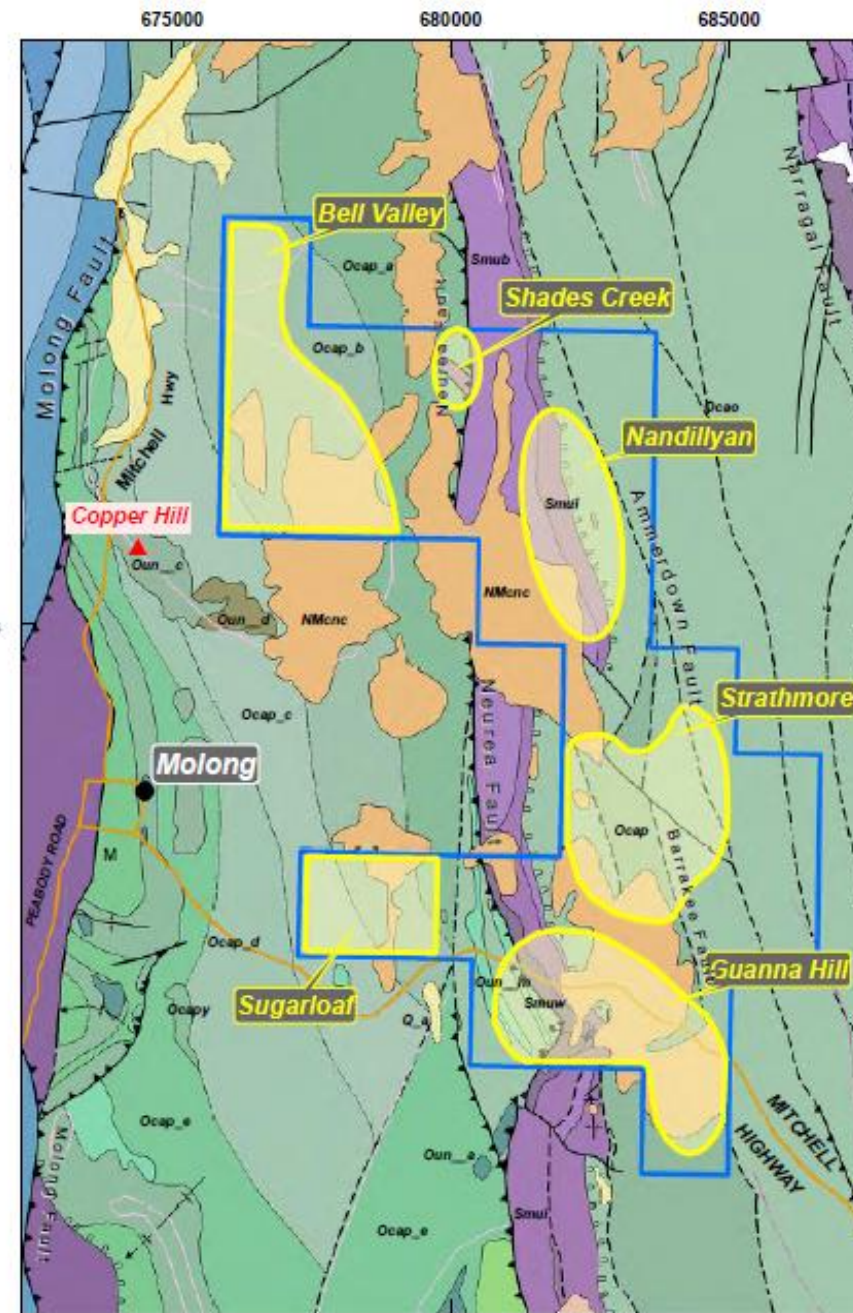
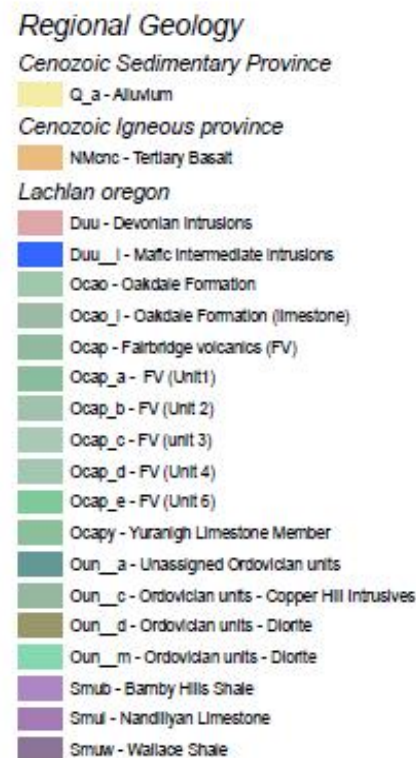


# 6 HIGHLY PROSPECTIVE TARGETS

## BELGRAVIA PROJECT (KTA 100%)

### East Lachlan Region, LFB

- The Belgravia Project covers an area of 80km<sup>2</sup> and lies approximately 7km east of the township of Molong and 20km northwest of Orange, the regional centre
- Project contains the same rocks (Fairbridge Volcanics and Oakdale Formation) that respectively host the giant Cadia- Ridgeway mine 35km south and Alkane Resources Boda discovery 65km north
- 6 targets prospective for porphyry gold-copper and associated mineralisation styles identified with current exploration focus on the western targets – Bell Valley and Sugarloaf
- Limited historical exploration - failed to consider the regolith and tertiary basalt (up to 40m thick) that obscures much of the prospective geology
- Drilling programs across Belgravia planned for 2nd half of 2020



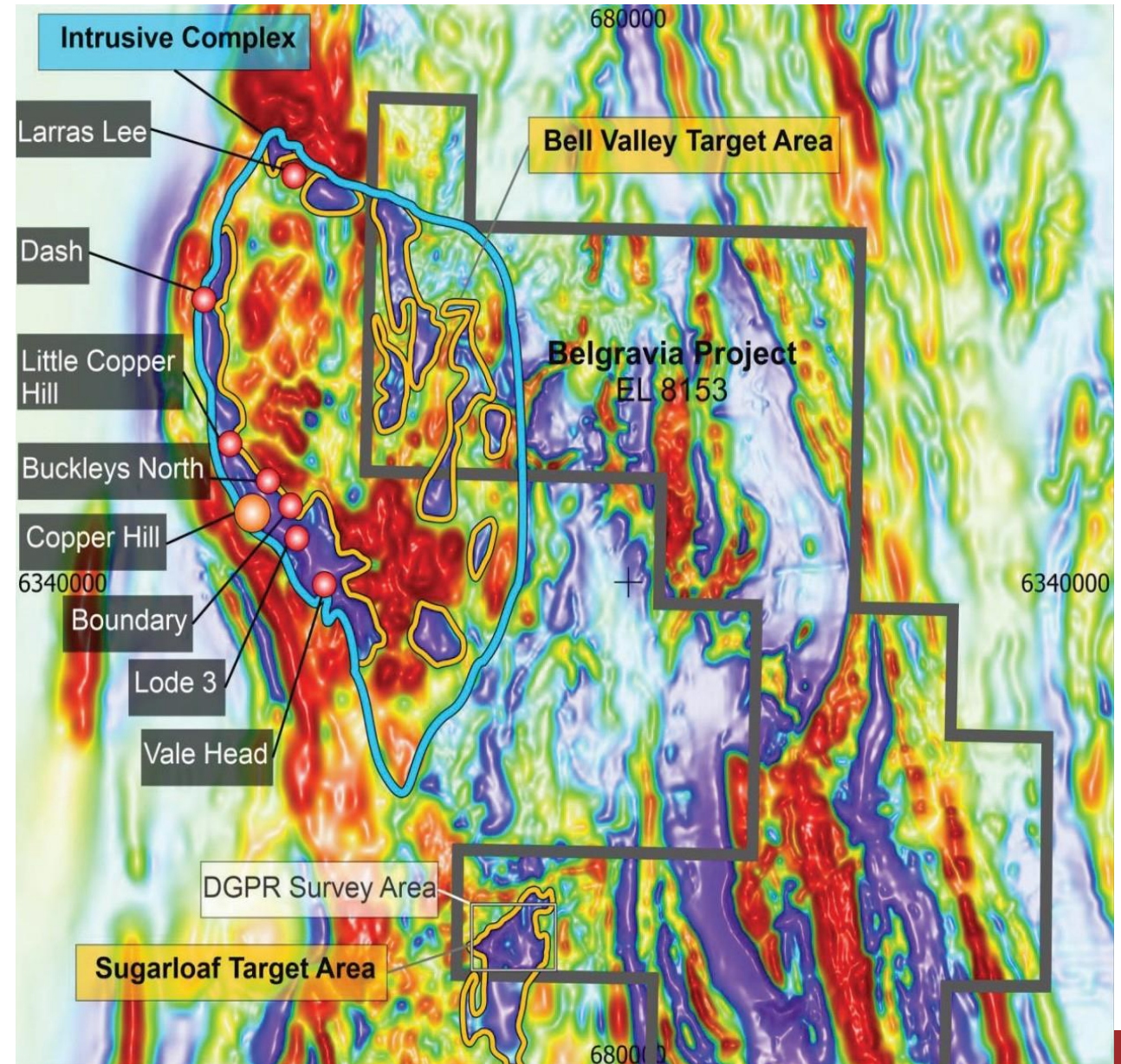


# BELL VALLEY TARGET AREA

## BELGRAVIA PROJECT (KTA 100%)

### Spoilt for choice in the Bell Valley Target Area

- Contains a substantial portion of the Copper Hill Intrusive Complex (CHIC) host to the Copper Hill porphyry deposit with a total resource of 87mt @ 0.32% Cu and 0.27g/t Au<sup>3</sup>
- With the CHIC, the Company has a 6km strike of prospective magnetic low features:
  - The Copper Hill deposit and several prospects in the adjoining tenement sit within a regional magnetic low feature attesting to their prospectivity
- Field mapping and shallow AC drilling identified monzodiorite and other intrusive host rocks ideal for porphyry and/or skarn-type mineralisation
- Alteration patterns at Bell Valley similar to Newcrest's Cadia East Mine noted by experienced porphyry geologist, Mr Ian Cooper
- Over 15,000m of Deep Ground Penetrating Radar completed across the target area with results pending



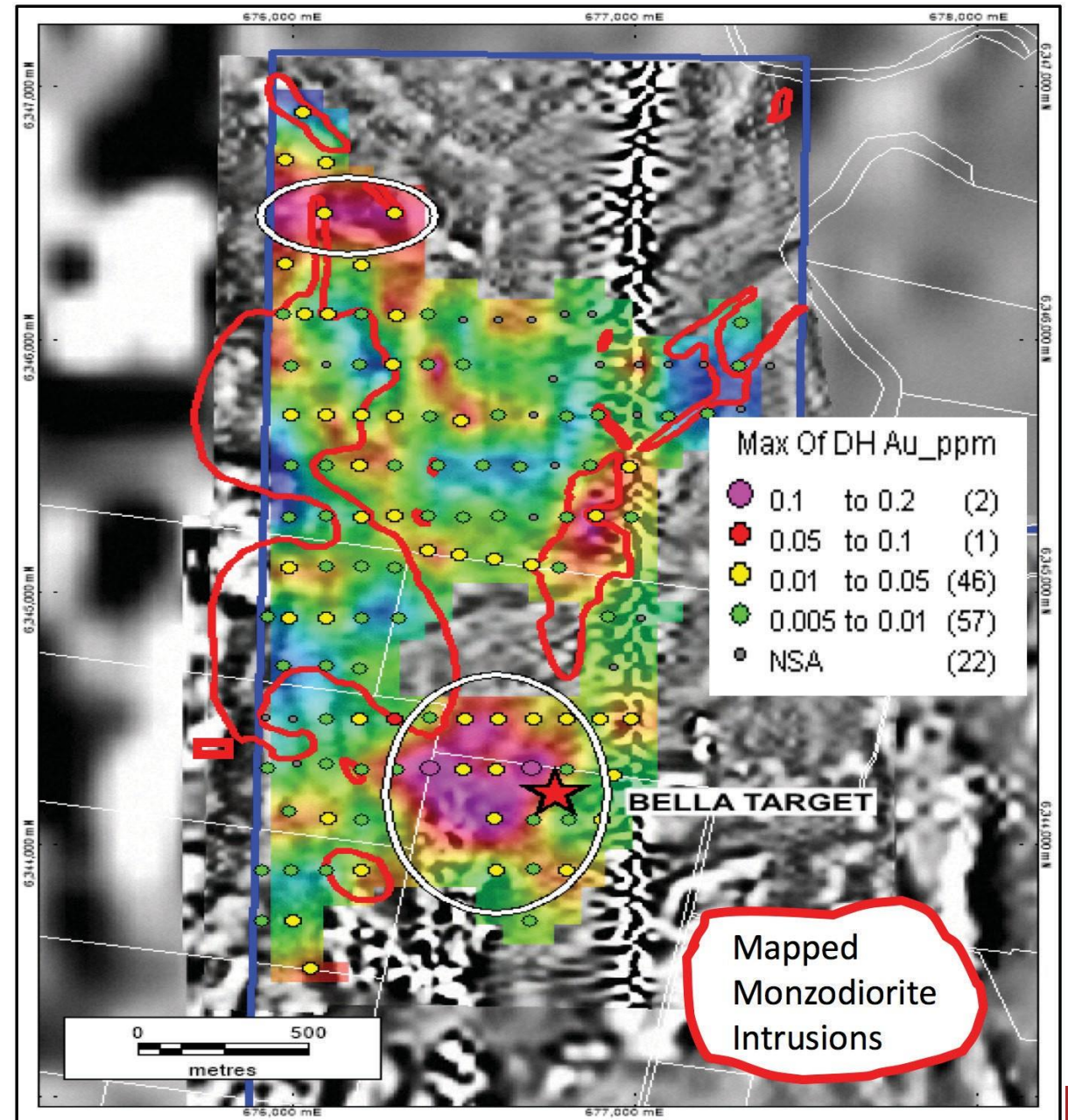


# BELL VALLEY TARGET AREA

## BELGRAVIA PROJECT (KTA 100%)

### Shallow AC drilling defines geochemical halos

- Shallow Geochemical AC drill program (average depth 18m) completed in early 2020 across the northern extents.
- Several successful outcomes out of the program include:
  - Previously unrecognised zones of monzodiorite and shoshonitic volcanics encountered.
  - Two gold highs, 0.192 ppm Au (Hole BVAC096) and 0.187 ppm Au (Hole BVAC118), in lenses of quartz-rich gravels under tertiary basalt.
  - Two pathfinder-enriched zones delineated – one substantial halo located at the Bella Target; the other adjacent to the Lara Targets.
  - Gold and copper enrichment increases encouragingly to the south and at depth.
- The Bella Target comprises a “doughnut” shaped magnetic pattern, considered characteristic of porphyry intrusion, supported by a geochemical halo of pathfinder minerals associated with porphyry-style mineralisation, and elevated gold and copper including two gold highs, 0.192 ppm Au and 0.187 ppm Au, on its western margin.



# SUGARLOAF TARGET AREA

## BELGRAVIA PROJECT (KTA 100%)

### Significant gold and copper results increase mineralisation potential at Sugarloaf

- Mineralised float sample [IC200323-10] assays 5.19g/t gold and 1.73% copper.
- Mineralised float sample is located 82m from a historical chip sample that assayed 0.53g/t gold and 1,250ppm copper, confirming the presence of significant gold and copper enrichment in the Sugarloaf area.
- Mineralised results coincide with a large 1km x 1km magnetic low feature with characteristics of porphyry-style mineralisation.
- Includes significant interpreted faults and shears featuring recognised proximal alteration (silica-flooding and jasperoid).



**Sample IC200323-10 - assaying 5.19g/t Au and 1.73% Cu and comprising quartz-epidote-malachite-chalcocite-chalcopyrite veining.**

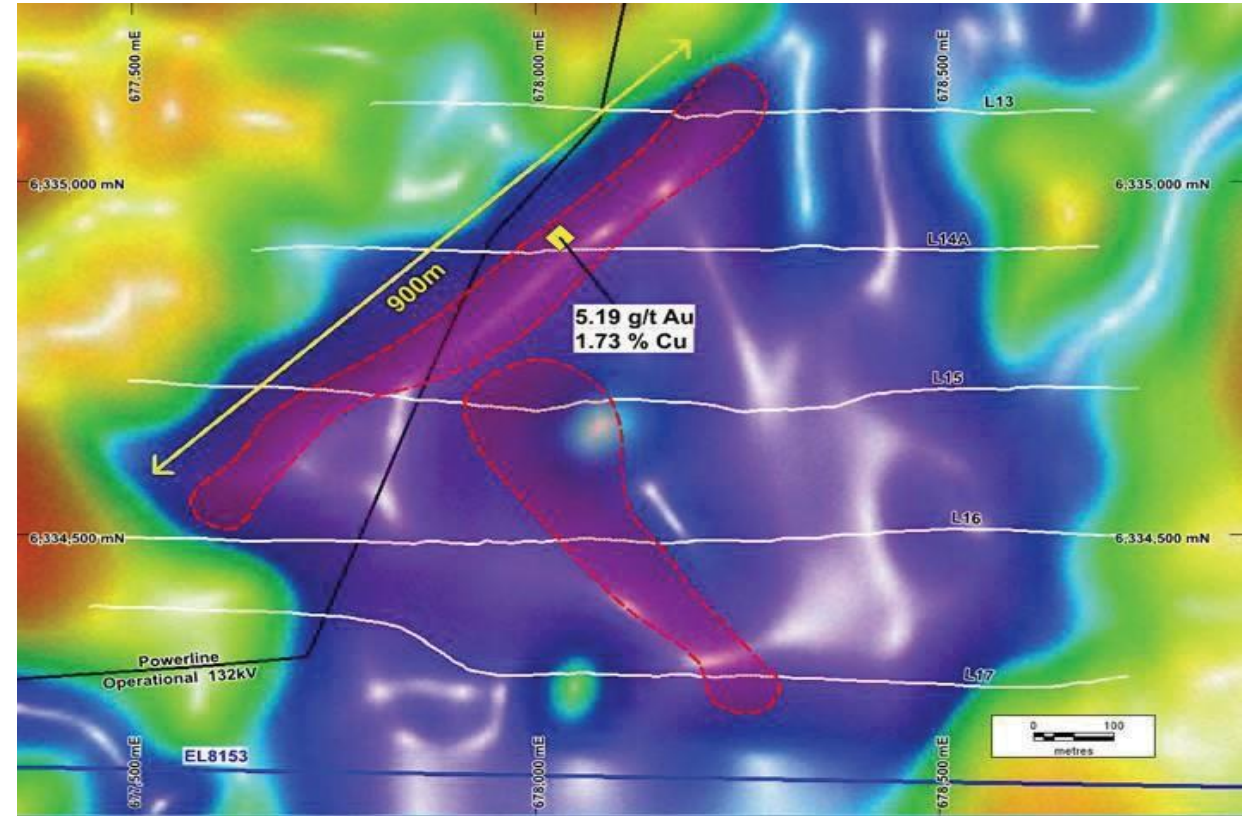


# SUGARLOAF TARGET AREA

## BELGRAVIA PROJECT (KTA 100%)

### DGPR across sugarloaf identified seven anomalies

- Form two separate polygons striking over 900m and 500m respectively.
- Sub-surface DGPR anomalies are interpreted to represent quartz stockworks, sheeted quartz veining and disseminated sulphides plausibly associated with porphyry-style Cu-Au or related styles of mineralisation.
- The two interpreted Polygons:
  - Are located within a distinctive magnetic low feature considered characteristic of a porphyry-style deposit such as neighbouring Copper Hill
  - Capture previously announced anomalous rock chips, including the float sample grading 5.19g/t Au and 1.73% Cu.
  - Target selection and preparations for drilling at Sugarloaf being completed with a view to commence in 2nd half of 2020.



**Sugarloaf Target Area with composite representation of DGPR anomalies (purple corridors).**

# LOADED WITH SHALLOW, HIGH GRADE GOLD TARGETS

## TURON PROJECT (KTA 100%)

### Vicinity of the world's largest gold specimen

- Covers an area of 120km<sup>2</sup> approximately 50km east of Belgravia
- Geology bears many similarities in terms of host-rocks, structural-style and mineralisation-style to other turbidite-hosted gold deposits, including Fosterville in the Bendigo-Ballarat zone, central Victoria
- Contains two separate north-trending line of workings, Quartz Ridge and Box Ridge, comprising numerous historic showings developed with shafts, adits and drifts that strike over 1.6km and 2.4km respectively
- Loaded with shallow targets generated through rock chip sampling, RAB drilling and Deep Ground Penetrating Radar work
- Diamond drill application lodged with the NSW Resources Regulator to test targets
  - Drilling scheduled to commence in July 2020



**The 1872 Holtermann Nugget contained 93.2kg gold  
Discovered at Hill End, Star of Hope mine**

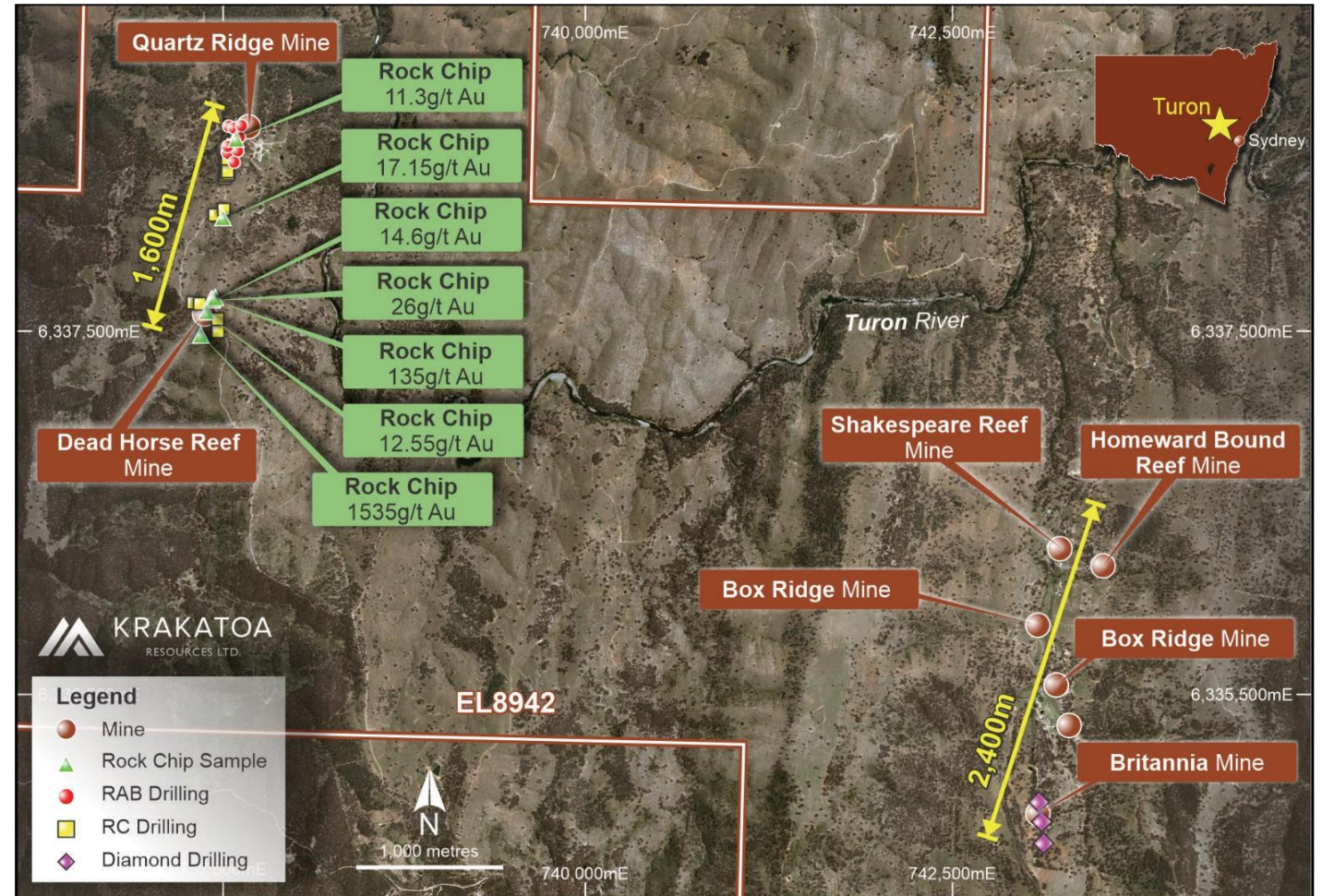


# QUARTZ RIDGE LINE OF WORKINGS

## TURON PROJECT (KTA 100%)

### Walk up drill targets – Quartz Ridge Line of workings

- 1.6km strike length
- Several highly anomalous gold intercepts at Quartz Ridge Mine with results up to 10m @ 1.64g/t gold from the surface to end of hole (10m composites) never followed up
- Rock grab specimens across Dead Horse Reef Mine has returned many remarkable metal mentions including:
  - 1,530g/t Au
  - 135g/t Au
  - 26g/t Au



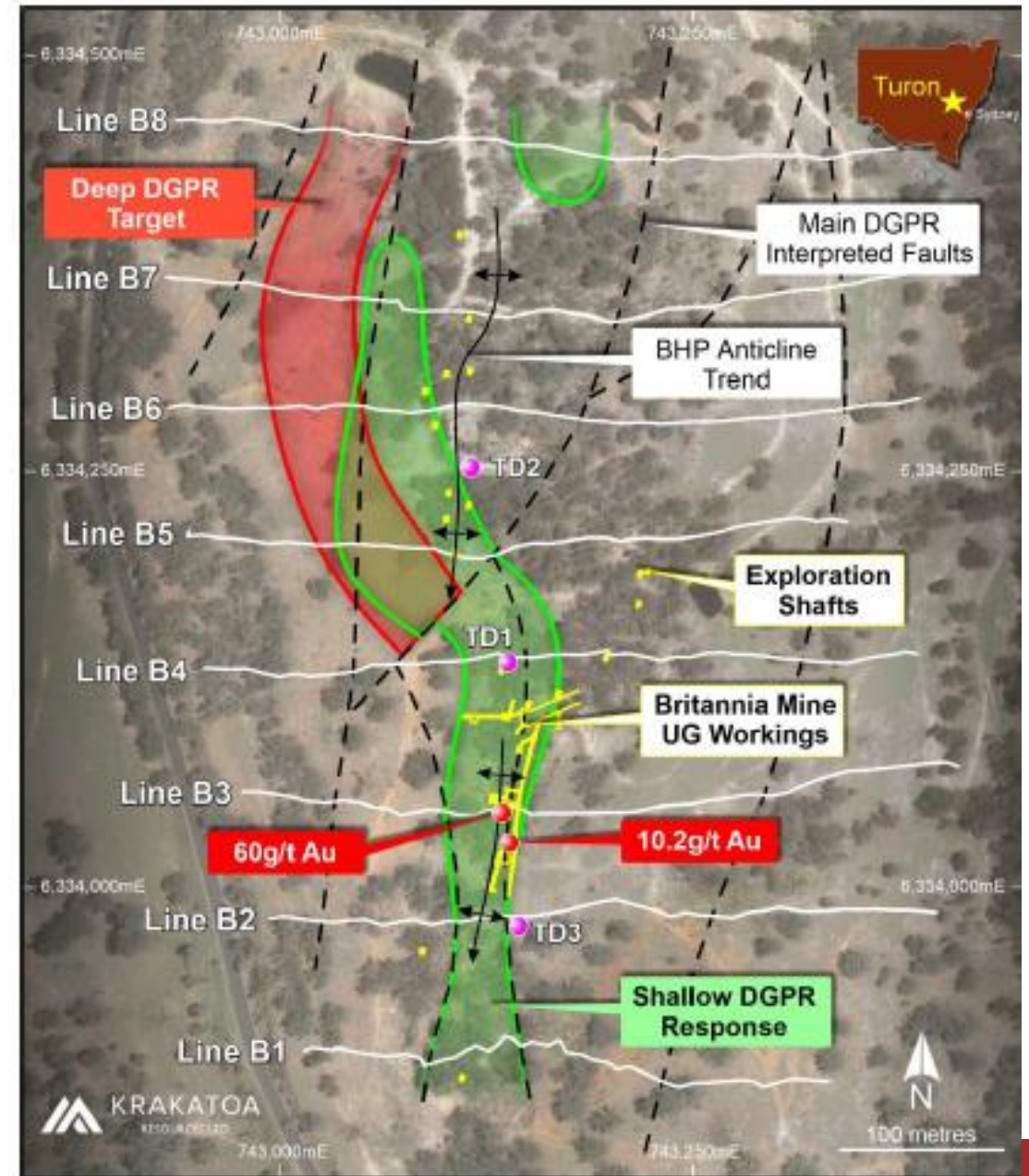


# BRITANNIA MINE

## TURON PROJECT (KTA 100%)

### Walk up drill targets – Box Ridge line of workings

- 2.4km strike length
- The Britannia Mine situated in the south of the Box Ridge Line of Workings produced ~10,000oz gold pre-1904 over a small area before encountering water which stopped mining at 30m depth
- Samples along adit walls outline a coherent remnant zone of potentially exploitable, high-grade mineralisation, with grades up to 60g/t gold
- Two priority DGPR targets outlined at the Britannia Mine:
  - A shallow target that directly corresponds with the historical mine sequence
  - A deeper target (from 60m below surface) which remains completely open and untested



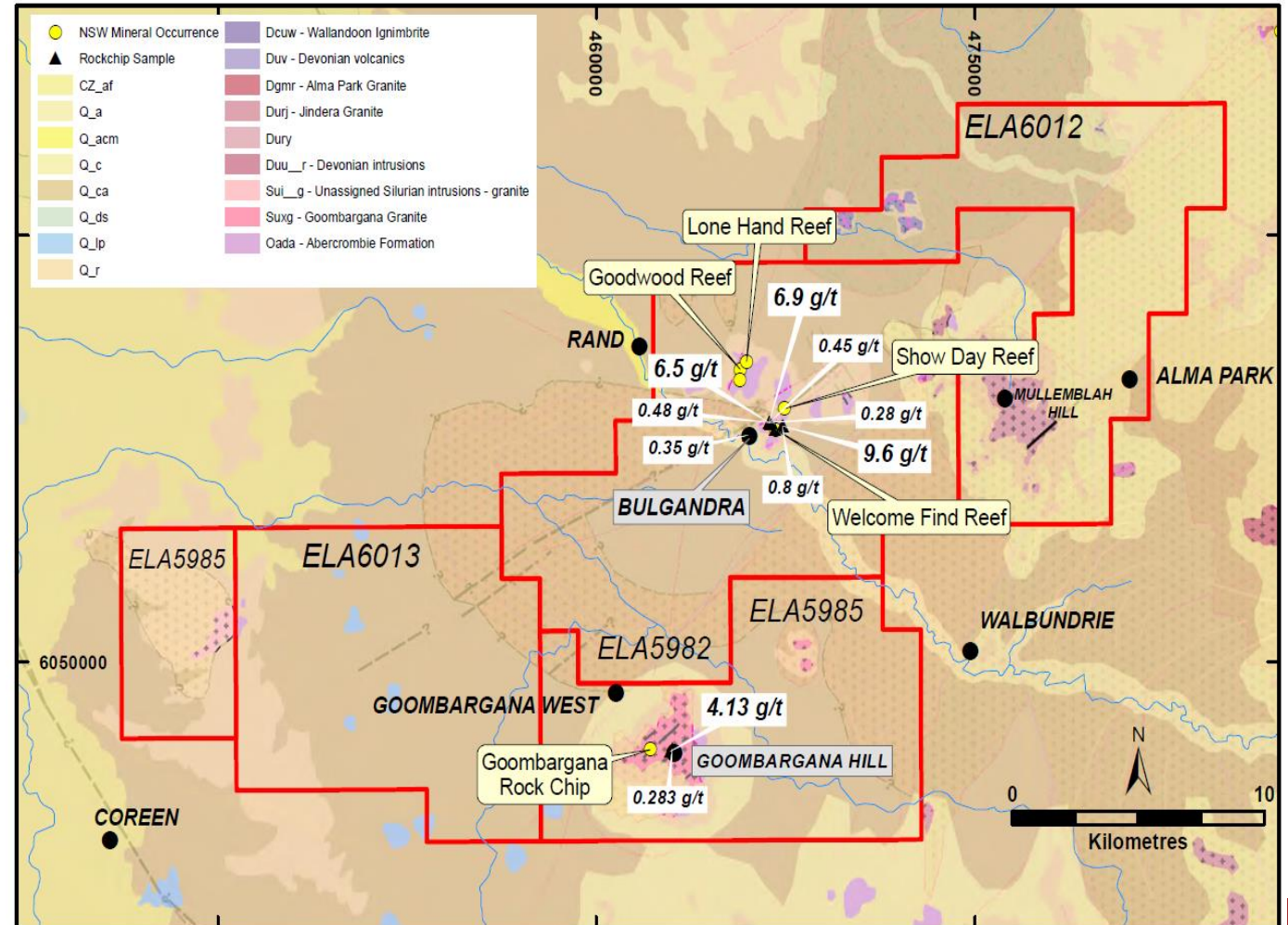


# SUBSTANTIAL GOLD FOCUSED LANDHOLDING IN THE LFB

## RAND PROJECT (100% - SUBJECT TO GRANT)

### Historic high-grade gold mines in limited outcrop. What lies beneath the cover?

- 580km<sup>2</sup> area prospective for shear-hosted and intrusion-related gold, such as De Grey's Mallina Gold Project
- Contains a 40km structural corridor with the prospective geology masked by colluvium
- I-type Jindera granite associated with gold mineralisation event located within tenure
- The Bulgandra Goldfield comprises several shallow mines which historically produced grades up to 265g/t gold
- Rock samples across limited outcrop returned significant results including:
  - 9.60g/t gold, 31g/t silver (Welcome Find Reef)
  - 6.90g/t gold and 6.50g/t gold (Show Day Reef)
  - 4.13g/t gold (Goombargana Hill)



# PROPOSED WORK PROGRAMS & PIPELINE OF NEWS FLOW

AGGRESSIVE YET SYSTEMATIC EXPLORATION CONTINUING

Strong pipeline of work programs and share price catalysts in the coming months as activity focuses on systematic exploration of all LFB projects:

**HISTORICAL HIGH**  
GOLD PRICES

**STRONG INVESTMENT**  
MARKET FOCUS

**DGPR RESULTS**  
BELL VALLEY

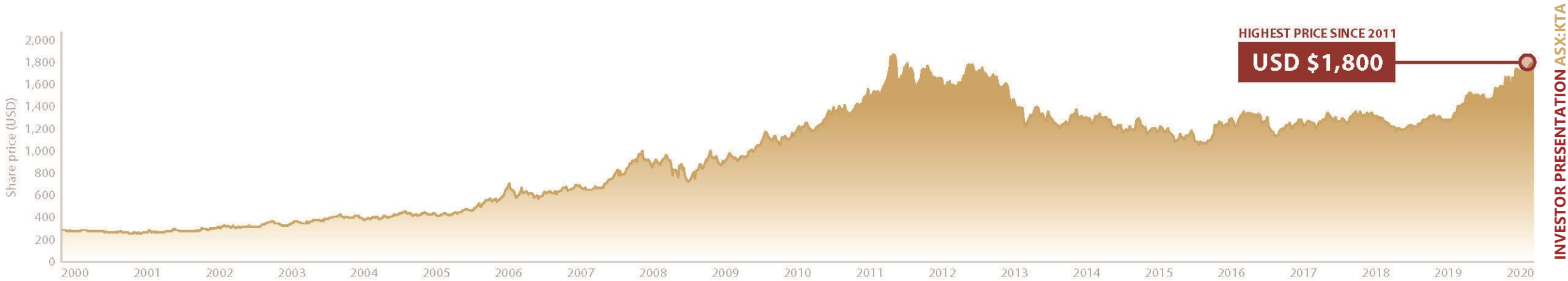
**DRILL PROGRAM**  
TURON PROJECT

**DRILL PROGRAM**  
BELGRAVIA: SUGARLOAF

**TARGET GENERATION**  
RAND PROJECT

**IP PROGRAM**  
BELGRAVIA: BELL VALLEY

**VALUE ACCRETIVE**  
ACQUISITIONS/  
APPLICATIONS





# SUMMARY

## BELGRAVIA GOLD PROJECT

### GEOLOGY

- Belgravia has identical rocks (**Fairbridge Volcanics and Oakdale Formation**) that host the giant Cadia-Ridgeway mine and Alkane's Boda discovery in the MVB

### WORLD CLASS LOCATION

- 35km north of Australia's largest & most lucrative gold Mine, Cadia - 37moz Au and 8.2mt Cu Resources<sup>4</sup>
- 65km south of Boda Discovery: 502m @ 0.5g/t Au and 0.2% Cu<sup>5</sup> and abuts Copper Hill

### DRILLING

- **127 x AC holes drilled** that matched geochemical enrichment zones with geophysical signatures, **deeper drilling planned**

## TURON GOLD PROJECT

### GEOLOGY

- **Shallow high grade gold** via orogenic vein systems at Turon in the Hill End Trough

### WORLD CLASS LOCATION

- Located within the wider **Lachlan Fold Belt**, **host to >80Moz of gold** and >13Mt of copper.

### DRILLING

- Drilling program to **commence July**

## RAND GOLD PROJECT

### GEOLOGY

- **De grey style prospectivity** at Rand related to I-type granite intrusions into sedimentary rocks

### WORLD CLASS LOCATION

- Located within the **wider Lachlan Fold Belt**, **host to >80Moz of gold** and >13Mt of copper.

### DRILLING

- **Aggressive pre-drilling** exploration underway



**KRAKATOA**  
RESOURCES LTD.

## ENQUIRIES

Colin Locke (Executive Chairman)

+61 457 289 582

[locke@ktaresources.com](mailto:locke@ktaresources.com)

[www.ktaresources.com](http://www.ktaresources.com)

