

ASX Announcement

18 July 2024



Impressive Drill Results Continue at Woulo Woulo

61m @ 1.64g/t from 124m, 59m @ 1.49g/t from 142m, 87m @ 1.04g/t from 138m, 27m @ 1.16g/t from 114m

Highlights

- Results received from a further 23 drill holes (for ~3,300m) at Woulo Woulo comprising 14 holes drilled along the main Woulo Woulo structure and 9 exploration holes testing adjacent anomalies
- Drilling along the 3-kilometre long Woulo Woulo main structure continues to demonstrate excellent continuity of very broad gold mineralisation. Latest results include: (refer Appendix One for full results):
 - 61m @ 1.64g/t gold from 124m** (Hole 24WOUIDD181)
 - 59m @ 1.49g/t gold from 142m** (Hole 24WOUIDD0182)
 - 27m @ 1.16g/t gold from 114m** (Hole 24WOURC0051)
 - 87m @ 1.04g/t gold from 138m** (Hole 24WOUIDD0183)
- Step-out drilling targeting down-dip extensions (100-200m vertical depth) in the northern ~1 kilometre strike of the Woulo Woulo deposit continues to demonstrate **increasing grade at depth with very high gram metre (+50gm) intercepts**
- These latest results follow recently announced results from depth extensions which included **105m @ 1.61g/t gold** from 135m, **75m @ 1.01g/t gold** from 138m, **74m @ 1.09g/t gold** from 137m and **52m @ 1.32g/t gold** from 166m (refer announcements 20 May 2024 and 19 June 2024)
- Exploration drilling validates the potential for additional parallel mineralised structures with results including **4m @ 3.39g/t gold** from 44m and **27m @ 0.76g/t gold** from 78m, along a structure to the east of the main Woulo Woulo structure
- 60 holes for >8,500 metres now drilled at Woulo Woulo with further results pending for over 20 holes**
- Exceptional metallurgical characteristics at Woulo Woulo with **90-94% recoveries**
- First phase of JORC resource delineation drilling at Woulo Woulo is expected to be completed in 2-3 weeks with results to be incorporated into an **Afema Project maiden JORC resource estimate**
- Drilling to commence on recently granted exploration permits in August/September 2024**
- Cash position at 30 June 2024 of \$18.3 million**

Managing Director, Justin Tremain commented:

"Results from Woulo Woulo drilling continue to be impressive. This first phase ~10,000m drill program at Woulo Woulo is nearing completion which will facilitate the release of a maiden JORC resource estimate in the coming weeks. We are also looking forward to commencing drilling on the recently granted exploration permits."

Turaco Gold Limited

ASX: TCG

Web: turacogold.com.au

X / Twitter: @TuracoGold

LinkedIn: [company/turaco-gold/](https://www.linkedin.com/company/turaco-gold/)

Contact

Level 1, 50 Ord Street
West Perth WA 6015

Phone: +61 8 9480 0402

Directors

John Fitzgerald
Non-Executive Chairman

Justin Tremain
Managing Director

Alan Campbell
Non-Executive Director

Bruce Mowat
Non-Executive Director

Turaco Gold Limited (**ASX | TCG**) ('**Turaco**' or the '**Company**') is pleased to announce new gold results from ongoing drilling at the Woulo Woulo deposit located within the granted mining permit of the Afema Gold Project in southeast Cote d'Ivoire (refer Figure One). Despite being in the middle of the wet season, Turaco has two diamond rigs operating at Woulo Woulo with over 13,000 metres of drilling completed over the past 4 months.

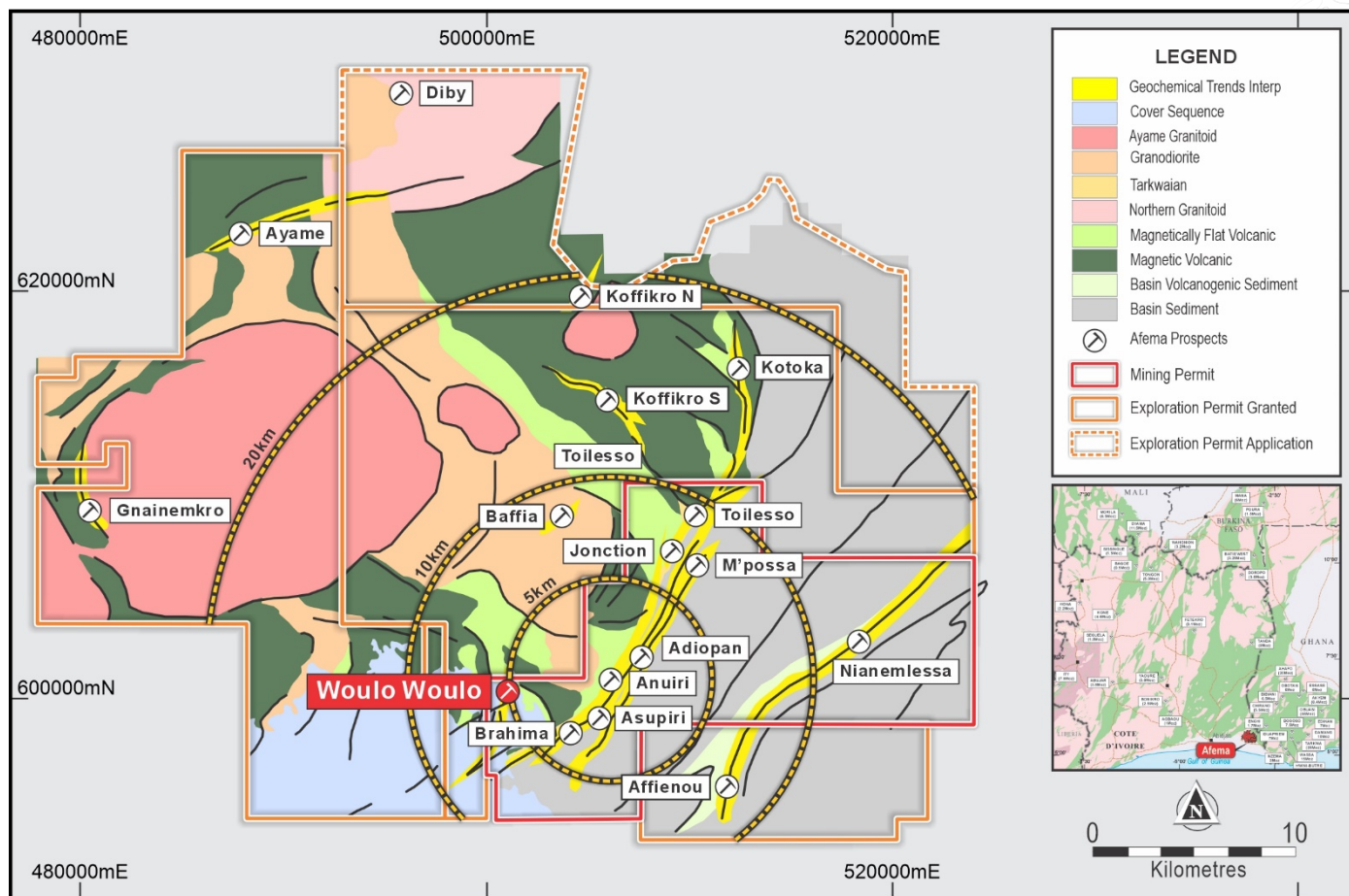


Figure One | Afema Project Permit Area Geology and Deposit & Prospect Locations

Drilling Details

Woulo Woulo has been subject to past shallow drilling (average 120 metres), delineating gold mineralisation from surface along 3.0 kilometres of mineralised strike and remains 'open' (refer Figure Two). Turaco is undertaking a combination of infill and depth extension drilling at Woulo Woulo as part of a program designed to delineate a maiden JORC mineral resource estimate at Woulo Woulo.

A total of 60 holes for >8,500 metres have now been completed at Woulo Woulo with results from the initial 17 holes previously announced. Results reported here are from a further 23 RC/DD holes (refer Figure Three). Fourteen of these holes were drilled along the main trend at Woulo Woulo as part of the JORC resource delineation program. The other nine holes were exploration holes testing adjacent geochemical anomalies adjacent to the main Woulo Woulo strike.

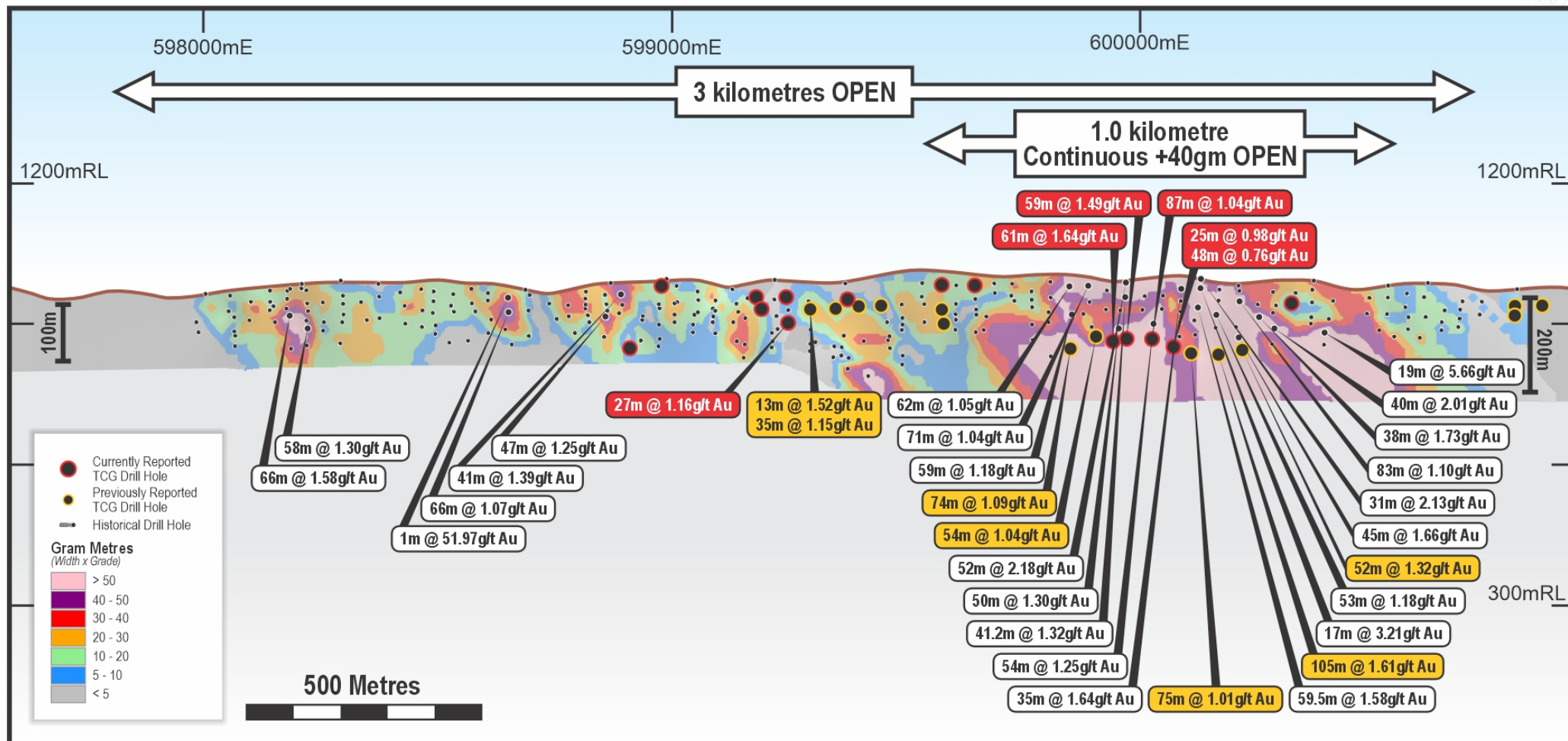


Figure Two | Woulo Woulo Long Section

Resource Drilling Details

Holes testing for depth extensions are drilled as RC collars with DD tails ('RCDD') and infill holes targeting shallow, up-dip mineralisation are drilled as RC from surface. Results from these fourteen (14) holes include (refer Appendix One):

Hole ID	From (m)	To (m)	Interval (m)	Gold Grade g/t	
24WOUDD0183	138	225	87	1.04	<i>Extension</i>
24WOUDD0181	124	185	61	1.64	<i>Extension</i>
and	193	203	7	1.14	
24WOUDD0182	142	201	59	1.49	<i>Extension</i>
24WOUDD0184	166	191	25	0.98	<i>Extension</i>
	197	245	48	0.76	
24WOURDD0056	63	76	13	1.26	<i>Extension</i>
	118	166	48	0.53	
24WOURC0044	19	40	21	1.03	<i>Infill</i>
24WOURC0045	53	63	10	1.14	<i>Infill</i>
and	100	119	19	0.61	
24WOURCDD0048	20	49	29	0.62	<i>Infill</i>
and	64	90	26	0.86	
24WOURC0049	42	66	24	0.89	<i>Infill</i>
and	72	81	9	1.09	
24WOURC0051	61	79	18	0.85	<i>Infill</i>
and	114	141	27	1.16	
24WOURC0055	167	184	17	1.14	<i>Infill</i>

Table One | Depth Extensions ('24WOURDD and 24WOUDD') and Infill ('24WOURC') Drill Results at Woulo Woulo

These results continue to demonstrate the very broad width and scale of mineralisation at Woulo Woulo (refer Figure Four). The deeper drilling (100-200m vertical) has been focused on the northern ~1 kilometre of the total 3 kilometres of drilled strike extent at Woulo Woulo and is showing increasing grade across very broad widths (i.e. higher gram metres at depth) with excellent grade continuity. The southern strike extent of the deposit is yet to see deeper drilling (refer Figure Two).

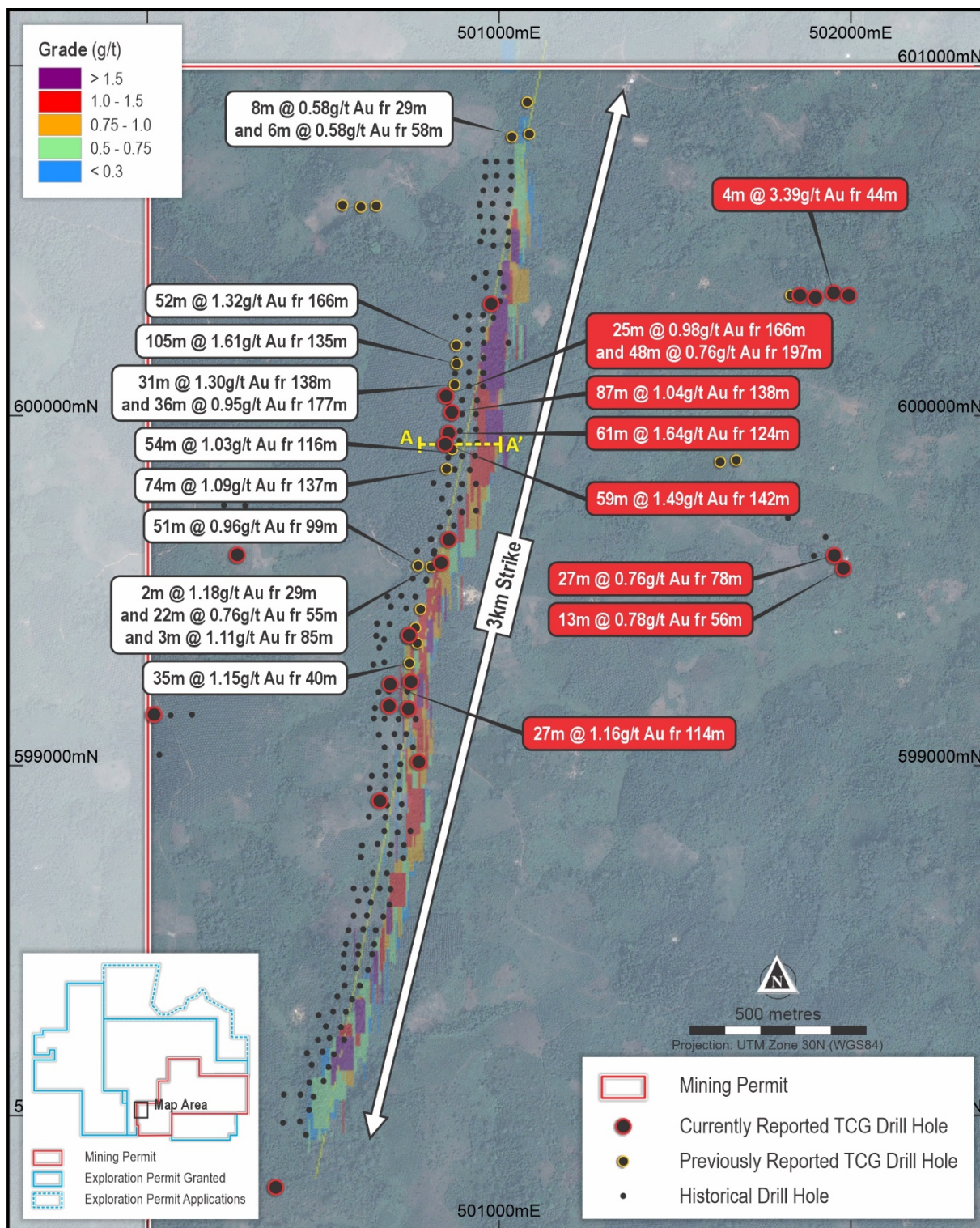


Figure Three | Woulo Woulo Drill Plan

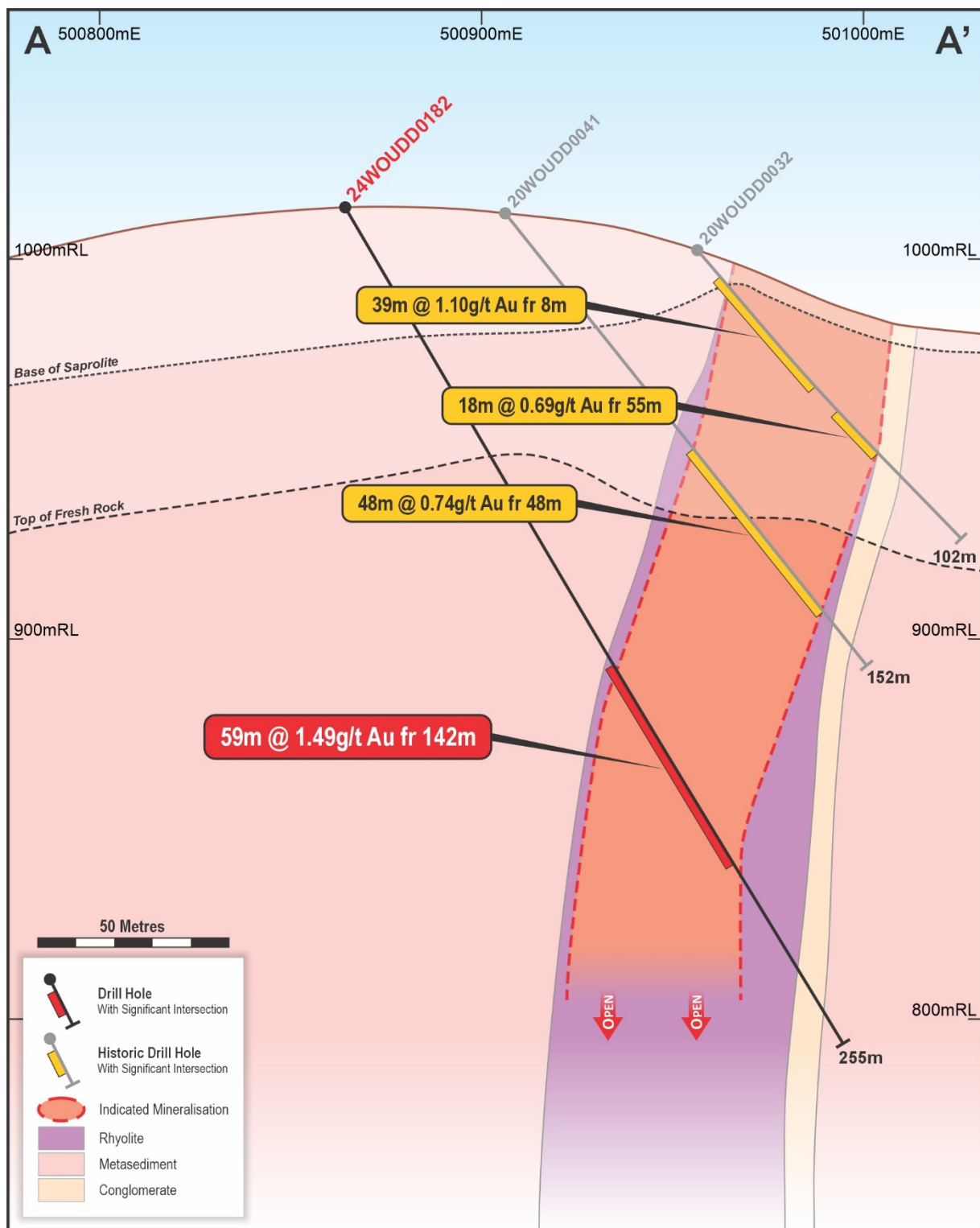


Figure Four | Woulo Woulo Cross Section 24WOUDD0182

Woulo Woulo mineralisation is hosted within an intensely silica-albite-sericite altered rhyolitic unit with brittle deformation textures characterised by networks of quartz veinlets. Fine-grained pyrite is the dominant sulphide. Wall rocks include volcano sedimentary units and minor doleritic dikes.

Exploration Drilling Details

Surface sampling has identified several geochemical anomalies to the west and east of the main Woulo Woulo trend. These anomalies are interpreted to be the surface expressions of parallel shears, some of which extend under thin transported cover. A total of nine (9) shallow exploration holes testing these anomalies are reported in this release.

Limited reconnaissance drilling has been undertaken on the western anomalies although this has been restricted by the boundary of the mining permit. This restriction has now been removed given the recent granting of exploration permits which includes the contiguous permit to the west of the Afema mining permit.

Results from four shallow holes testing geochemical anomalism east of the main Woulo Woulo strike have returned highly promising results including (refer Appendix One):

Hole ID	From (m)	To (m)	Interval (m)	Gold Grade g/t
24WOURC0061	44	48	4	3.39
24WOURC0047	78	105	27	0.76
24WOURC0046	56	69	13	0.78

Table Two | Drilling Testing Parallel Eastern Woulo Woulo Structure

All these holes intersected characteristic Woulo Woulo silica-albite alteration and rhyolitic host rock.

This announcement has been authorised for release by the Board of Turaco Gold Limited.

ENDS

For further information, please contact:

Justin Tremain
Managing Director
Turaco Gold Limited
E: info@turacogold.com.au
T: +61 8 9480 0402

Lucas Robinson
Investor Relations
Corporate Storytime
E: lucas@corporatestorytime.com
T: +61 408 228 889

Competent Person's Statement

The information in this report that relates to Exploration Results is based on, and fairly represents, information compiled by Mr Elliot Grant, who is a Member of the Australasian Institute of Geoscientists. Mr Grant is a full-time employee of Turaco Gold Ltd and has sufficient experience which is relevant to the style of mineralisation and type of deposit under consideration and to the activity he is undertaking to qualify as a competent person as defined in the 2012 Edition of the "Australasian Code for reporting of Exploration Results, Exploration Targets, Mineral Resources and Ore Reserves" (JORC Code). Mr Grant consents to the inclusion in this report of the matters based upon his information in the form and context in which it appears.

References may have been made in this announcement to certain past ASX announcements, including references regarding exploration results. For full details, refer to the referenced ASX announcement on the said date. The Company confirms that it is not aware of any new information or data that materially affects the information included in these earlier market announcements.

Appendix One | Woulo Woulo Drilling Details, Afema Gold Project

Hole ID	Easting	Northing	RL	Dip	Azi	EOH	From (m)	To (m)	Interval (m)	Gold g/t
Woulo Woulo Resource Drilling - Main Trend										
24WOURC0044	500859	599650	1004	-55	90	80	19	40	21	1.03
24WOURC0045	500980	600323	993	-60	90	162	53 100	63 119	10 19	1.14 0.61
24WOURDD0048	500746	599377	991	-55	90	114	20 64	49 90	29 26	0.62 0.86
24WOURC0049	500751	599244	983	-60	90	120	42 72	66 81	24 9	0.89 1.09
24WOURC0050	500744	599167	992	-50	90	102	44 58 87	50 71 98	6 13 11	1.70 0.64 0.64
24WOURC0051	500692	599237	963	-60	90	174	61 86 114 159	79 93 141 163	18 7 27 4	0.85 0.95 1.16 1.09
24WOURC0055	500662	598903	993	-55	90	216	167	184	17	1.14
24WOURDD0056	500689	599174	984	-55	90	207	63 118	76 166	13 48	1.26 0.53
24WOURC0057	500773	599015	993	-55	90	50	5	8	3	1.16
24WOURC0062	500837	599583	1010	-55	90	84	28 55	47 61	19 6	0.59 1.39
24WOUIDD0181	500858	599954	1011	-60	90	256	124 196	185 203	61 7	1.64 1.14
24WOUIDD0182	500849	599922	1011	-60	90	255	142	201	59	1.49
24WOUIDD0183	500867	600013	1011	-60	90	250	138	225	87	1.04
24WOUIDD0184	500851	600060	1008	-60	90	285	166 197 254 267	191 245 260 271	25 48 6 4	0.98 0.76 0.83 0.68
Woulo Woulo Exploration Drilling										
24WOURC0046	501984	599568	997	-55	90	78	56	69	13	0.78
24WOURC0047	501958	599605	996	-55	90	114	78	105	27	0.76
24WOURC0052	500018	599150	998	-55	90	174	103	114	11	0.69
24WOURC0053	500255	599607	987	-55	90	156	nsr			
24WOURC0054	500365	597799	972	-55	90	138	nsr			
24WOURC0058	501860	600347	1000	-55	90	96	nsr			
24WOURC0059	501905	600341	987	-55	90	84	nsr			
24WOURC0060	502000	600347	963	-55	90	80	nsr			
24WOURC0061	501956	600355	974	-55	90	54	44	48	4	3.39

*'RC' denotes RC drilling, 'DD' denotes diamond drilling, 'RDD' denotes RC collars with DD tails

** 'nsr' denotes no significant result

Appendix Two | JORC Code (2012) Edition Table 1

Section 1 Sampling Techniques and Data

Criteria	JORC Code explanation	Commentary
Sampling techniques	<ul style="list-style-type: none"> Nature and quality of sampling (eg cut channels, random chips, or specific specialised industry standard measurement tools appropriate to the minerals under investigation, such as down hole gamma sondes, or handheld XRF instruments, etc). These examples should not be taken as limiting the broad meaning of sampling. Include reference to measures taken to ensure sample representivity and the appropriate calibration of any measurement tools or systems used. Aspects of the determination of mineralisation that are Material to the Public Report. In cases where 'industry standard' work has been done this would be relatively simple (eg 'reverse circulation drilling was used to obtain 1 m samples from which 3 kg was pulverised to produce a 30 g charge for fire assay'). In other cases more explanation may be required, such as where there is coarse gold that has inherent sampling problems. Unusual commodities or mineralisation types (eg submarine nodules) may warrant disclosure of detailed information. 	<ul style="list-style-type: none"> Drill holes are angled holes from surface and a combination of reverse circulation (RC) and diamond core (DD) holes. Holes with an RDD prefix denote a hole begun in RC before being converted to DD. RC was drilled until water was encountered and then 'cased down' to NQ diameter core. 1m RC samples are collected from a rig mounted cyclone. Average RC sample weight sent to the laboratory was 2-2.5kg. A duplicate sample was retained on site as a backup and for future sampling. Half core samples were sent to the laboratory with sample weights ranging from 2.5-3kg. The remaining core was retained for geological reference. QAQC comprising certified reference material, blanks and field duplicates were inserted each 25m. All samples were sent for analysis by PhotonAssay and reported at a 0.015g/t gold detection limit.
Drilling techniques	<ul style="list-style-type: none"> Drill type (eg core, reverse circulation, open-hole hammer, rotary air blast, auger, Bangka, sonic, etc) and details (eg core diameter, triple or standard tube, depth of diamond tails, face-sampling bit or other type, whether core is oriented and if so, by what method, etc). 	<ul style="list-style-type: none"> Atlas Copco T3W RC drill rig with 380PSI onboard + 380PSI auxiliary air capacity. A modular diamond drill rig was used for coring from surface. RC holes were drilled either entirely or partially in RC with a 5 3/8" hammer. When continued with core the RC pre-collar was cased off with HQ before continuing to core in NQ. DD holes were collared in HQ in the oxide and continued with NTW standard core in fresh rock.
Drill sample recovery	<ul style="list-style-type: none"> Method of recording and assessing core and chip sample recoveries and results assessed. Measures taken to maximise sample recovery and ensure representative nature of the samples. Whether a relationship exists between sample recovery and grade and whether sample bias may have occurred due to preferential loss/gain of fine/coarse material. 	<ul style="list-style-type: none"> RC samples are sieved and logged at 1m intervals by supervising geologist, sample weight, quality, moisture and any contamination also logged. The splitter is cleaned after each sample pass. Cyclone is cleaned at the end of the hole, and more often if any wet zones are encountered. Drill core was deposited in core trays and transported to the company core shed. Core was marked up for depth and recovery using the depth marks indicators by contractors. Core was geologically logged, photographed and measured for density prior to sampling. Sample quality and recovery was good, with generally dry samples of consistent weight obtained using the techniques above. No material bias expected in high recovery samples obtained.
Logging	<ul style="list-style-type: none"> Whether core and chip samples have been geologically and geotechnically logged to a level of detail to support appropriate Mineral Resource estimation, mining studies and metallurgical studies. Whether logging is qualitative or quantitative in nature. Core (or costean, channel, etc) photography. The total length and percentage of the relevant intersections logged. 	<ul style="list-style-type: none"> Recording of rock type, oxidation, veining, alteration and sample quality carried out for each 1m sample. Logging is mostly qualitative. Samples representing the lithology of each metre of drilling is collected and sorted into chip and core trays for future geological reference. The entirety of each drill hole was logged and assayed.
Sub-sampling techniques and sample preparation	<ul style="list-style-type: none"> If core, whether cut or sawn and whether quarter, half or all core taken. If non-core, whether riffled, tube sampled, rotary split, etc and whether sampled wet or dry. For all sample types, the nature, quality and appropriateness of the sample preparation technique. Quality control procedures adopted for all sub-sampling stages to maximise representivity of samples. 	<ul style="list-style-type: none"> 1m RC samples collected from the cyclone and passed through a riffle splitter to reduce sample weight. The splitter is cleaned after each sample pass. 1m bulk RC samples for each meter remain in the field for future assay if required. Half core was collected using a dedicated core saw. Half core was utilized to maximise retained core for future reference.

Criteria	JORC Code explanation	Commentary
	<ul style="list-style-type: none"> Measures taken to ensure that the sampling is representative of the in-situ material collected, including for instance results for field duplicate/second-half sampling. Whether sample sizes are appropriate to the grain size of the material being sampled. 	<ul style="list-style-type: none"> This technique is considered industry standard and effective assay technique for this style of drilling. Samples were dry and representative of drilled material. Sample sizes averaging 2-3kg are considered sufficient to accurately represent the gold content of each drilled meter at this prospect. Certified reference standards, blank samples and field duplicates were inserted every 25m. Photon analysis is non-destructive with original sampling material remaining available for check assays. Unsourced core is retained in core boxes for geological reference and additional sampling.
Quality of assay data and laboratory tests	<ul style="list-style-type: none"> The nature, quality and appropriateness of the assaying and laboratory procedures used and whether the technique is considered partial or total. For geophysical tools, spectrometers, handheld XRF instruments, etc, the parameters used in determining the analysis including instrument make and model, reading times, calibrations factors applied and their derivation, etc. Nature of quality control procedures adopted (eg standards, blanks, duplicates, external laboratory checks) and whether acceptable levels of accuracy (ie lack of bias) and precision have been established. 	<ul style="list-style-type: none"> Samples are collected from the project area by site geologist and transported from the field camp by company employees to MSA Laboratory in Yamoussoukro, Côte d'Ivoire. Samples were analyzed as approximately using PhotonAssay (CPA-Au1) Sample was crushed with 70% passing 2mm. 500g then split and assayed. Quality control procedures consist of certified reference materials (minimum weight of 300g), blanks and field duplicates were inserted at a rate of approximately 10%. The results demonstrated an acceptable level of accuracy and precision. The PhotonAssay technique was developed by CSIRO and Chrysos Corporation and is a fast, chemical free non-destructive, alternative using high-energy X-rays to traditional fire assay and uses a significantly larger sample size (500g v's 50g for fire assay). This technique is accredited by the National Association of Testing Authorities (NATA).
Verification of sampling and assaying	<ul style="list-style-type: none"> The verification of significant intersections by either independent or alternative company personnel. The use of twinned holes. Documentation of primary data, data entry procedures, data verification, data storage (physical and electronic) protocols. Discuss any adjustment to assay data. 	<ul style="list-style-type: none"> The significant intersections were produced and verified by two different company personnel. The sample numbers are handwritten on to geological logs in the field while sampling is ongoing and checked while entering the data into a sample register. The sample register is used to process raw results from the lab and the processed results are then validated by software (Excel, Access, Datashed, ArcMap, Micromine). A hardcopy of each file is stored, and an electronic copy saved in two separate hard disk drives. No adjustment to assay data was carried out.
Location of data points	<ul style="list-style-type: none"> Accuracy and quality of surveys used to locate drill holes (collar and down-hole surveys), trenches, mine workings and other locations used in Mineral Resource estimation. Specification of the grid system used. Quality and adequacy of topographic control. 	<ul style="list-style-type: none"> At this stage collars are reported with HGPS pending future DGPS survey. Collars are marked by concrete plinths to preserve their location. Data are recorded in a modified WGS 1984, UTM_Zone 30 (northern hemisphere) projection. Topographic control established with DGPS to 1cm vertical accuracy for most RC holes, or Garmin GPS to <10 metres accuracy where DGPS not available. 900m elevation is added to true RLs for the 'project' RL to avoid deeper drill hole data points having negative values. Hand-held GPS provides only approximate elevation control. Sample locations are draped onto DEM in GIS software for elevation control.
Data spacing and distribution	<ul style="list-style-type: none"> Data spacing for reporting of Exploration Results. Whether the data spacing and distribution is sufficient to establish the degree of geological and grade continuity appropriate for the Mineral Resource and Ore Reserve estimation procedure(s) and classifications applied. Whether sample compositing has been applied. 	<ul style="list-style-type: none"> Holes were designed with reference to historical drilling to test continuity of mineralization up-dip and down-dip. Dips ranged from -50 to -60 and with azimuth of 090.
Orientation of data in relation	<ul style="list-style-type: none"> Whether the orientation of sampling achieves unbiased sampling of possible structures and the extent to which this is known, considering the deposit type. 	<ul style="list-style-type: none"> Drill orientation was designed to collect sufficient sample volume for metallurgical test work.

Criteria	JORC Code explanation	Commentary
to geological structure	<ul style="list-style-type: none"> If the relationship between the drilling orientation and the orientation of key mineralised structures is considered to have introduced a sampling bias, this should be assessed and reported if material. 	<ul style="list-style-type: none"> True widths are considered to 60-80% of reported downhole intercepts based on modelled geometry of mineralization from previous drilling. There is no known sampling bias related to orientation of key mineralised structures.
Sample security	<ul style="list-style-type: none"> The measures taken to ensure sample security. 	<ul style="list-style-type: none"> Samples collected in the field are brought back to the camp and placed in a storage room, bagged and sealed ready for lab collection. Bagged samples collected from the camp by the analysis company and transported directly to the laboratory.
Audits or reviews	<ul style="list-style-type: none"> The results of any audits or reviews of sampling techniques and data. 	<ul style="list-style-type: none"> No external audit or review completed due to early-stage nature of exploration.

Section 2 Reporting of Exploration Results

Criteria	JORC Code explanation	Commentary
Mineral tenement and land tenure status	<ul style="list-style-type: none"> Type, reference name/number, location and ownership including agreements or material issues with third parties such as joint ventures, partnerships, overriding royalties, native title interests, historical sites, wilderness or national park and environmental settings. The security of the tenure held at the time of reporting along with any known impediments to obtaining a licence to operate in the area. 	<ul style="list-style-type: none"> Drill results reported are from granted exploitation permit PE43 located in south-east Côte d'Ivoire. The permit is held by Afema Gold SA, in which Turaco holds a current 51% interest, with a right to increase that interest to 70%, through Taurus Gold Afema Holdings Ltd. PE43 was granted in December 2013 and is valid until December 2033 with a 20-year renewal option thereafter. There are no impediments to working in the areas.
Exploration done by other parties	<ul style="list-style-type: none"> Acknowledgment and appraisal of exploration by other parties. 	<ul style="list-style-type: none"> Exploration work undertaken within PE43 prior to Turaco was undertaken by Taurus Gold Ltd and Teranga Gold Corporation and comprised RC and DD drilling along with soil sampling and airborne geophysics.
Geology	<ul style="list-style-type: none"> Deposit type, geological setting and style of mineralisation. 	<ul style="list-style-type: none"> Deposit type is characteristic Paleoproterozoic mesothermal gold within mineralized shear zones. The Afema shear is located on the boundary of the Kumasi sedimentary basin and Sefwi greenstone belt. All geological units and tectonic events are taken to be Paleoproterozoic in age.
Drill hole Information	<ul style="list-style-type: none"> A summary of all information material to the understanding of the exploration results including a tabulation of the following information for all Material drill holes: <ul style="list-style-type: none"> easting and northing of the drill hole collar elevation or RL (Reduced Level – elevation above sea level in metres) of the drill hole collar dip and azimuth of the hole down hole length and interception depth hole length. If the exclusion of this information is justified on the basis that the information is not Material and this exclusion does not detract from the understanding of the report, the Competent Person should clearly explain why this is the case. 	<ul style="list-style-type: none"> Drill hole locations shown in figure in main body of announcement and all locations and dip/azimuth details are provided in tables in the announcement and Appendix One.
Data aggregation methods	<ul style="list-style-type: none"> In reporting Exploration Results, weighting averaging techniques, maximum and/or minimum grade truncations (eg cutting of high grades) and cut-off grades are usually Material and should be stated. Where aggregate intercepts incorporate short lengths of high grade results and longer lengths of low grade results, the procedure used for such aggregation should be stated and some typical examples of such aggregations should be shown in detail. The assumptions used for any reporting of metal equivalent values should be clearly stated. 	<ul style="list-style-type: none"> Drill results for Woulo Woulo are calculated at lower cut-off of 0.50g/t gold with maximum of 5m dilution (unless noted otherwise).

Criteria	JORC Code explanation	Commentary
Relationship between mineralisation widths and intercept lengths	<ul style="list-style-type: none"> These relationships are particularly important in the reporting of Exploration Results. If the geometry of the mineralisation with respect to the drill hole angle is known, its nature should be reported. If it is not known and only the down hole lengths are reported, there should be a clear statement to this effect (eg 'down hole length, true width not known'). 	<ul style="list-style-type: none"> Drillholes were orientated towards the east on a 90 azimuth to test the interpreted N-S geological strike orientation of mineralization. Drillholes were inclined -55 to -60 below the horizontal.
Diagrams	<ul style="list-style-type: none"> Appropriate maps and sections (with scales) and tabulations of intercepts should be included for any significant discovery being reported. These should include, but not be limited to a plan view of drill hole collar locations and appropriate sectional views. 	<ul style="list-style-type: none"> Appropriate diagrams relevant to material results are shown in the body of this announcement.
Balanced reporting	<ul style="list-style-type: none"> Where comprehensive reporting of all Exploration Results is not practicable, representative reporting of both low and high grades and/or widths should be practiced to avoid misleading reporting of Exploration Results. 	<ul style="list-style-type: none"> All mineralised and significantly anomalous intercepts of >1m @ >1.0 g/t gold or >3m @ >0.5g/t gold reported in Appendix One.
Other substantive exploration data	<ul style="list-style-type: none"> Other exploration data, if meaningful and material, should be reported including (but not limited to): geological observations; geophysical survey results; geochemical survey results; bulk samples – size and method of treatment; metallurgical test results; bulk density, groundwater, geotechnical and rock characteristics; potential deleterious or contaminating substances. 	<ul style="list-style-type: none"> Metallurgical test work results for Woulo Woulo were announced 23 April 2024.
Further work	<ul style="list-style-type: none"> The nature and scale of planned further work (eg tests for lateral extensions or depth extensions or large-scale step-out drilling). Diagrams clearly highlighting the areas of possible extensions, including the main geological interpretations and future drilling areas, provided this information is not commercially sensitive. 	<ul style="list-style-type: none"> Drilling is ongoing and designed to allow for JORC resource estimation. Diagrams included in body of this announcement are deemed appropriate by Competent Person.