

HERITAGE SURVEY COMPLETED OVER ERRAWARRA'S PEGMATITE SWARM AT ANDOVER WEST PROJECT

HIGHLIGHTS:

- Heritage Surveys completed over two priority lithium pegmatite target areas
- Targets represent strike extensions to known Li pegmatite trend
- Targets comprise ~2km combined strike of Li fertile pegmatite packages
- Heritage clearance report expected to be received in coming weeks
- A follow-up heritage survey is pending which will open the pathway to drilling
- Follow-up soil sampling is underway in the western target area to better define the anomalous Li soil trends

Errawarra Resources Ltd (ASX:ERW) (Errawarra or the Company) is pleased to provide this exploration update for the Andover West project in the West Pilbara region.

The Company has successfully completed the first of two planned heritage surveys over an area of 6km² which cover the highest priority target areas at its Andover West project area. This survey and pending the completion of a follow-up survey will open the opportunity to drill the lithium fertile stacked pegmatite packages located along trend and to the east and west of Li pegmatites reported by Raiden Resources.

Executive Chairman Thomas Reddicliffe commented:

"We are excited that we will soon be in a position to drill test the down dip extensions to our recently identified stacked pegmatite packages where both rock chip and soil samples have consistently highlighted strong lithium potential. The significant nearby discovery by Raiden Resources which is on the same trend has previously highlighted the prospectivity of this pegmatite trend. We are finalising our drill targeting in anticipation of implementing an exploratory RC drill program upon completion of a second heritage survey and receipt of the clearance reports."

The Andover West heritage survey commenced on 20 May 2024 and was completed on time on the 25 May 2024. The areas that were heritage cleared lie directly to the west and east of the Raiden Resources Li pegmatite discovery which returned high grade rock chips results including **3.8% Li_2O** and is also within the broader Lithium Corridor which includes the Andover discovery of Azure Minerals Ltd for which an exploration target of **100-240mt at 1-1.5% Li_2O** has been reported. Azure Minerals has recently been acquired by SQM and Hancock Prospecting.

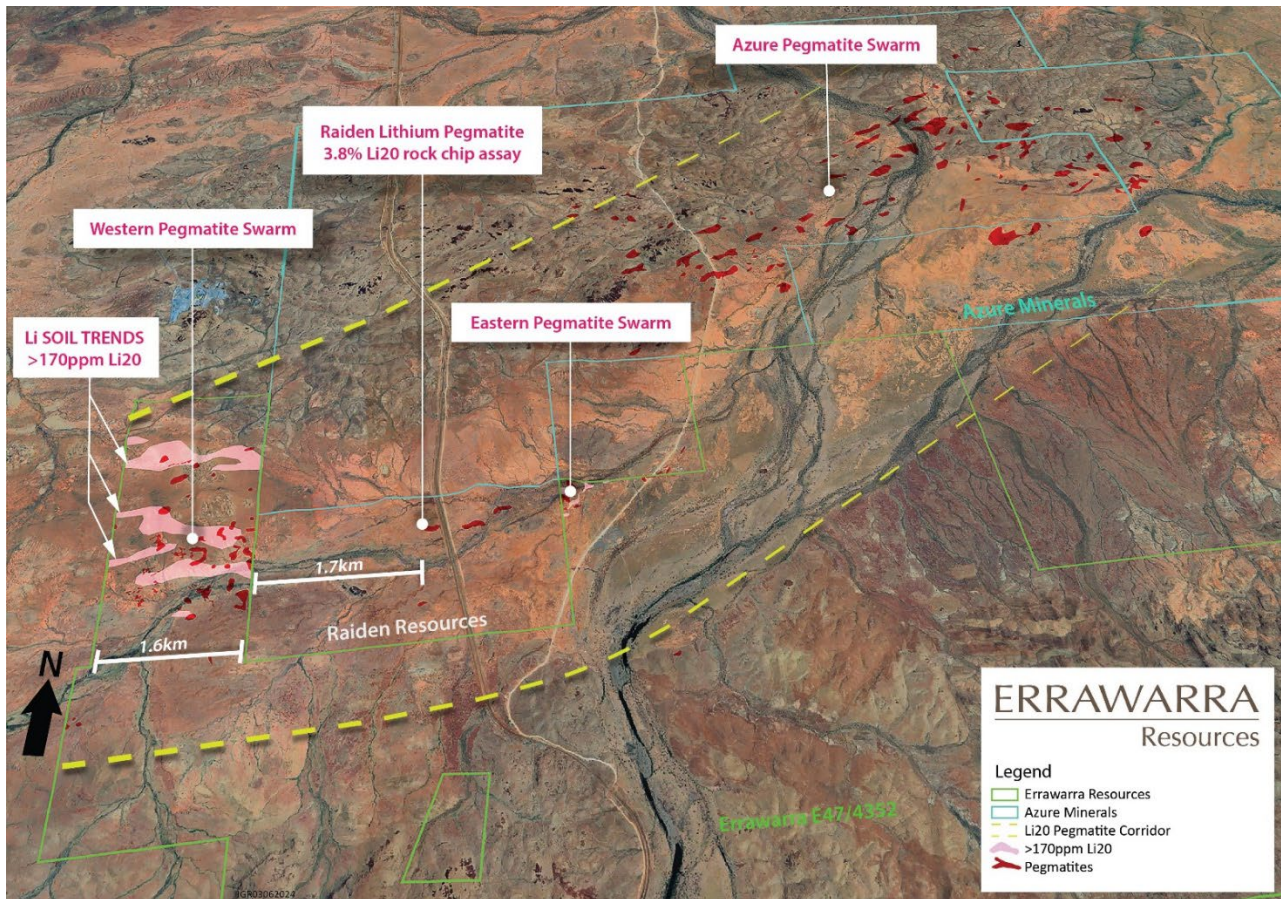


Figure 1. Andover West tenement location and Lithium Pegmatite Corridor.

Western Pegmatite Swarm

Two strongly anomalous Li soil trends have been highlighted in this NW portion of the tenement (Figure 2). The strongest trend is located within the larger pegmatite swarm and reported a peak Li_2O value of 325ppm. This trend appears to be along strike of the Raiden pegmatites where Li_2O values including 3.8% were reported from rock chips. Also, along strike and further to the east is the Li pegmatite discovered by Errawarra which reported a peak rock chip assay of 0.9% Li_2O . An additional second strong anomalous (peak 299ppm Li_2O) Li trend also highlighted in the northern section of the NW area.

The Li soil anomalies were interpreted from a reconnaissance soil sampling program undertaken on a 100m x 400m grid. A follow-up soil sampling program is currently underway aimed at better defining the anomalous Li soil trends which will assist drill targeting.

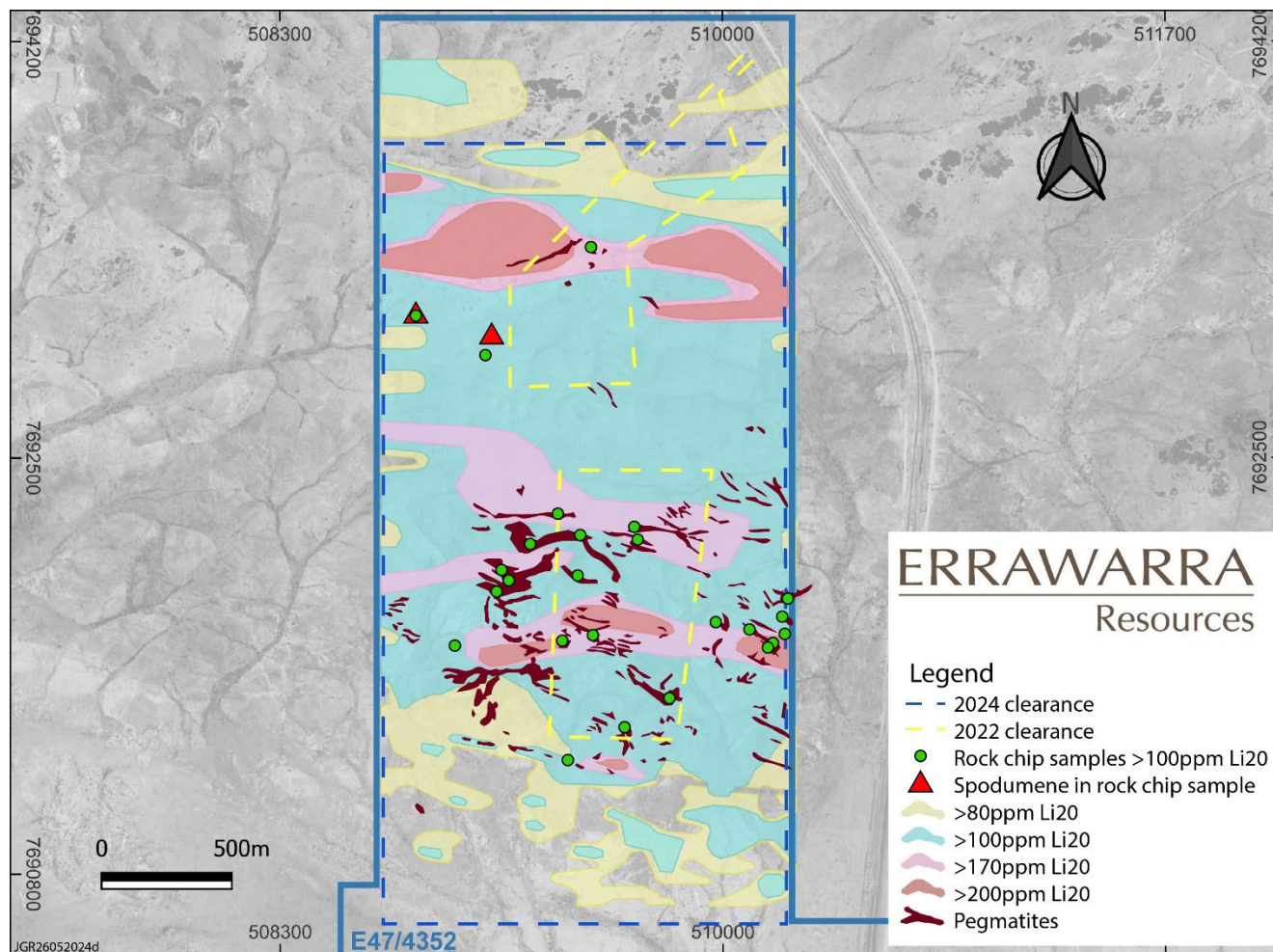


Figure 2. Li₂O Soil Trends associated with Western Pegmatite Package

Eastern Pegmatite Swarm

The Eastern pegmatite stacked pegmatite swarm has an associated well-defined strong Li soil anomaly (peak 424ppm Li₂O and with rock chip samples reporting up to 0.9% Li₂O (Figure 4). The soil anomaly extends some 800m to the east within soil covered terrain. The pegmatites in this area are in the same trend as the Western Pegmatite Swarm which are 3.5km to the west.



Figure 3. Stacked Pegmatites in Western Area

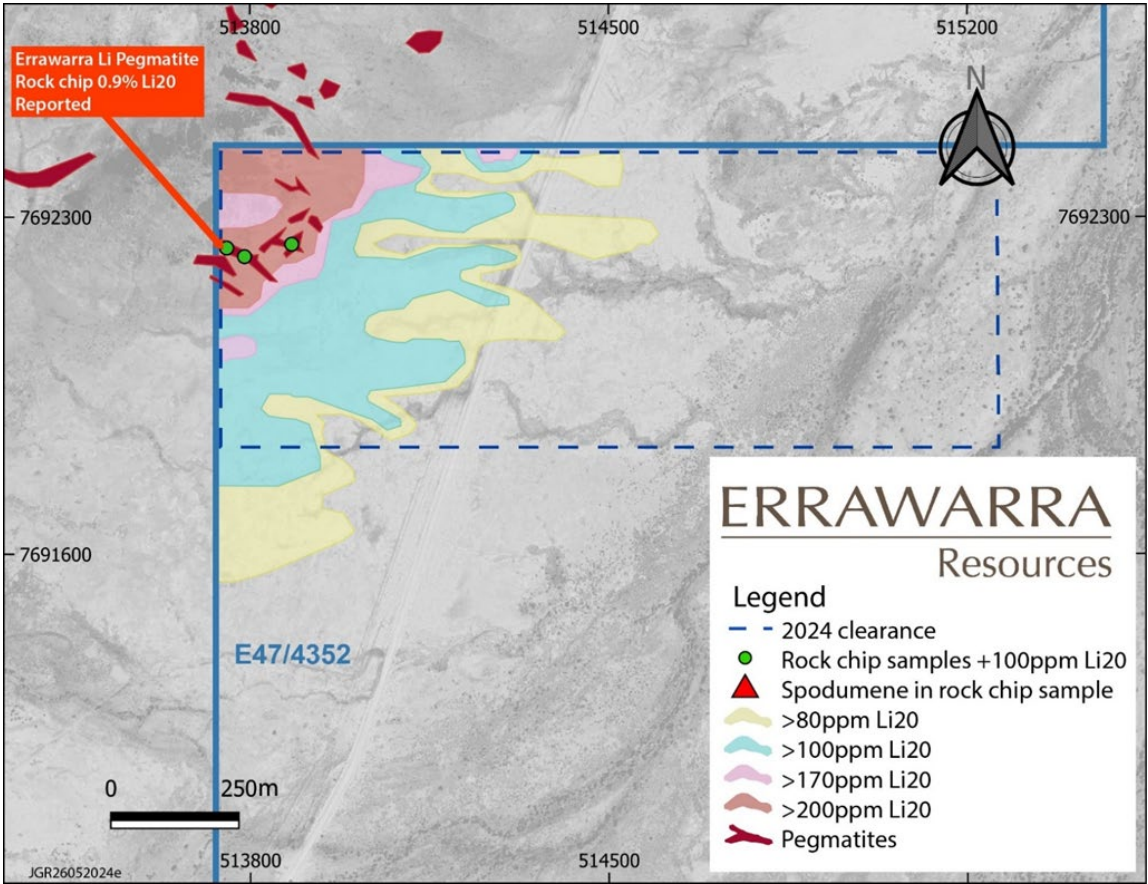


Figure 4. Li₂O Soil Trends associated with Eastern Pegmatite Package



Figure 5. Exposed Li Pegmatite in Eastern Area

Next Steps

Errawarra is preparing drill plans in anticipation of the completion of the second heritage clearance survey and the receipt of results from the follow-up infill soil sampling program in the Western Pegmatite Swarm area. The Company will provide an update to the timing and scope of the proposed drill program in the coming weeks.

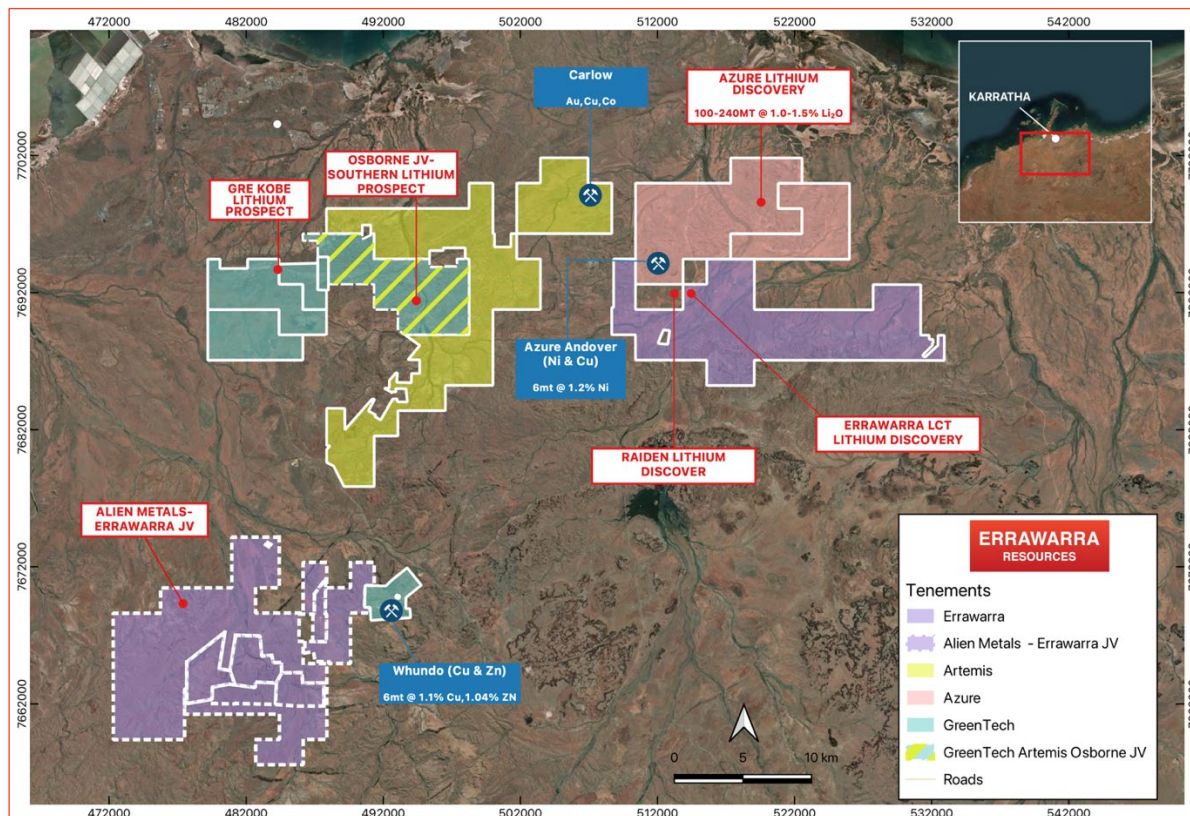


Figure 6. Errawarra and the new Alien Metals joint venture area in the West Pilbara Lithium Province

This ASX announcement has been authorised for release by Thomas Reddcliffe, Executive Chairman on behalf of the Board of Directors.

For further information, please contact:

Tom Reddcliffe
Executive Chairman
Errawarra Resources Ltd
E: info@errawarra.com

Competent Person Statement

Thomas Reddcliffe, BSc (Hons), MSc, a Director and Shareholder of the Company, is a Fellow of the AUSIMM, and has sufficient experience which is relevant to the style of mineralisation and type of deposit under consideration to qualify as a Competent Person as defined in the 2012 edition of the 'Australasian Code for Reporting of Exploration Results, Mineral Resources and Ore Reserves'. Thomas Reddcliffe consents to the inclusion in the report of the information in the form and context in which it appears.

About Errawarra Resources

Errawarra Resources (ASX:ERW) is a battery metal focused resources company with projects in Western Australia, including the Andover West Lithium Prospect located in the highly prospective Pilbara region and the Errabiddy gold/graphite/REE/lithium project located in the Gascoyne region.

For more information, please visit www.errawarra.com.

Information in this release relating to previous ASX disclosures

- > Raiden Resources Ltd dated 9 November 2023.
- > Azure Minerals Ltd dated 7 August 2023.
- > Azure Minerals Ltd dated 30 April 2024.
- > Errawarra Resources Ltd dated 13 May 2024.
- > Raiden Resources Ltd 9 November 2023.
- > Errawarra Resources Ltd dated 6 December 2023.
- > Errawarra Resources Ltd 13 May 2024.
- > Errawarra Resources Ltd dated 3 August 2023.