



TAITON RESOURCES
LIMITED

ASX: T88

ANNOUNCEMENT

Investor Webinar Presentation ASX Release – 28th August 2024

Taiton Resources Limited (“T88”, “Taiton” or “the Company”) is pleased to attached herewith the presentation from the webinar conducted by Sharewise on 27 August 2024 at 3.00 pm AEST.

A video copy of the webinar is also available in Youtube at the following link:

https://www.youtube.com/watch?v=8dpgUu_lmK4

Our Executive Director, Noel Ong had provided his valuable insights of the Company’s projects and shared his thoughts of the future of the Company.

This announcement has been approved for release by the Executive Directors.

For further information please contact:

David Low

Executive Director

E: noel.ong@taiton.com.au

P: +61 (3) 8648 6431



TAITON RESOURCES
LIMITED

ASX: T88

ANNOUNCEMENT

COMPETENT PERSON STATEMENT

The information in this presentation that relates to exploration results and geological data for the Company's Projects are based on information generated and compiled by Noel Ong, who is a member of the of the Australian Institute of Resources and Metallurgy and a director of Taiton Resources Limited.

Noel Ong has sufficient experience that is relevant to the styles of mineralisation and types of deposits under consideration and to the activities being undertaken to qualify as Competent Person as defined in the 2012 Edition of the "Australasian Code for Reporting of Exploration Results, Mineral Resources and Ore Reserves". Mr Ong consents to the inclusion in this announcement of the matters based on this information in the form and context in which it appears.

FORWARD LOOKING INFORMATION:

This announcement contains forward-looking statements. Wherever possible, words such as "intends", "expects", "scheduled", "estimates", "anticipates", "believes", and similar expressions or statements that certain actions, events or results "may", "could", "would", "might" or "will" be taken, occur or be achieved, have been used to identify these forward-looking statements.

Although the forward-looking statements contained in this announcement reflect management's current beliefs based upon information currently available to management and based upon what management believes to be reasonable assumptions, Taiton cannot be certain that actual results will be consistent with these forward-looking statements. A number of factors could cause events and achievements to differ materially from the results expressed or implied in the forward-looking statements. These factors should be considered carefully and prospective investors should not place undue reliance on the forward-looking statements.

Forward-looking statements necessarily involve significant known and unknown risks, assumptions and uncertainties that may cause actual results, events, prospects and opportunities to differ materially from those expressed or implied by such forward-looking statements. Although Taiton has attempted to identify important



TAITON RESOURCES
LIMITED

ASX: T88

ANNOUNCEMENT

risks and factors that could cause actual actions, events or results to differ materially from those described in forward-looking statements, there may be other factors and risks that cause actions, events or results not to be anticipated, estimated or intended, including those risk factors discussed in Taiton's public filings.

There can be no assurance that the forward-looking statements will prove to be accurate, as actual results and future events could differ materially from those anticipated in such statements. Accordingly, prospective investors should not place undue reliance on forward-looking statements. Any forward-looking statements are made as of the date of this announcement, and Taiton assumes no obligation to update or revise them to reflect new events or circumstances, unless otherwise required by law.

About Taiton Resources Limited

Taiton Resources Limited (ASX: T88) is an early-stage mineral exploration and development company with a portfolio of projects across New South Wales, South Australia and Western Australia, comprising the following:

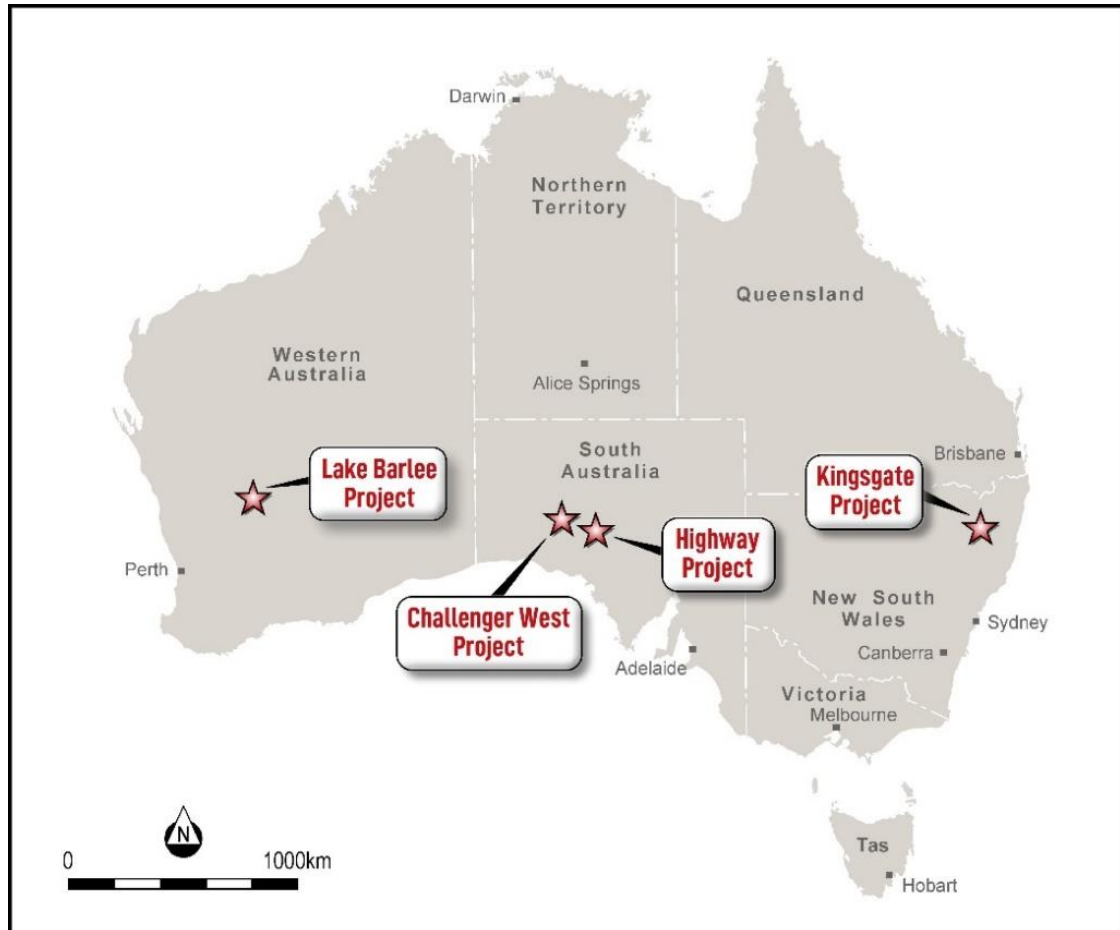
- a) **Kingsgate High Purity Quartz Project** – total tenement land holding of 294.1 sq km, located in New South Wales;
- b) **Highway Project** – total tenement land holding of 2,930 sq km, located in South Australia;
- c) **Challenger West Project** – total tenement land holding of 997 sq km and application for additional 861 sq km of new tenement, both in South Australia ; and
- d) **Lake Barlee Project** – total tenement land holding of 668.7 sq km and application for additional 192.2 sq km of new tenement, both located in Western Australia.



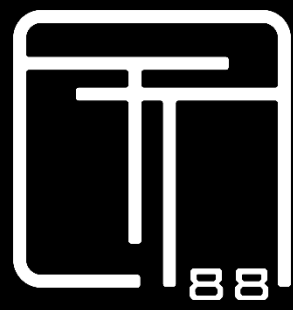
TAITON RESOURCES
LIMITED

ANNOUNCEMENT

ASX: T88



Taiton Resources Limited (ASX: T88) project locations.



Drilling for Gold in South Australia. Gawler Craton Next Challenger Gold Mine

Presenter: Noel Ong

August 2024 PRESENTATION

DISCLAIMER

- The information that relates to exploration targets, exploration results and drilling data is based on information compiled by Noel Ong who is a member of the Australian Institute of Resources and Metallurgy and who has more than five years experience in the field of activity being reported on.
- Noel Ong is a director of the Company and has sufficient experience which is relevant to the style of mineralisation and type of deposits under consideration and to the activity which he is undertaking to qualify as a competent person as defined in the 2012 Edition of the 'Australasian Code for Reporting of Exploration Results, Minerals Resources and Ore Reserves'.
- Mr. Ong consents to the inclusion in the presentation of the matters based on his information in the form and content in which it appears.
- This presentation does not purport to provide all of the information an interested party may require in order to investigate the affairs of Taiton Resources Limited (Taiton), nor shall it be construed as a solicitation to buy or sell Taiton securities, or to engage in or refrain from engaging in any financial transaction. In preparing this presentation Taiton did not take into account the investment objectives, financial situation and particular needs of the individual investors.
- Before making an investment decision on the basis of this presentation, the investor needs to consider, with or without the assistance of a financial advisor, whether the investment is appropriate in light of their particular investment needs, objectives and financial circumstances.
- This presentation is based on information acquired from associated companies, internal company reports, and technical information believed to be reliable, but Taiton does not make any representation or warranty to its accuracy, completeness or currency. Taiton accepts no obligation to correct or update the information or opinions expressed in it. Opinions expressed are subject to change without notice and accurately reflect the views of Taiton at the time of presenting. Photographs, unless captioned, are not from the project area.
- This presentation has originated from Taiton Resources Limited.
- Exploration Target (Target) Statement:
 - An Exploration Target (Target) does not constitute the definition of any resource, which is compliant with the JORC Code. Target tonnages and grades contained herein are conceptual in nature and may or may not be realised through completion of further exploration and other studies on the targets described. As such, it is uncertain if further exploration will result in the determination of tonnages and grades that conform to mineral resources or ore reserves under the JORC code.



Our Projects - Positioned for Success



Challenger West Project : South Australia

- Tenure of 1858sqkm
- Potential for Gold Target Identified at Area 1
- Highly prospective for historical 1.2M ounce Au Challenger- like gold system.

Highway Project : South Australia

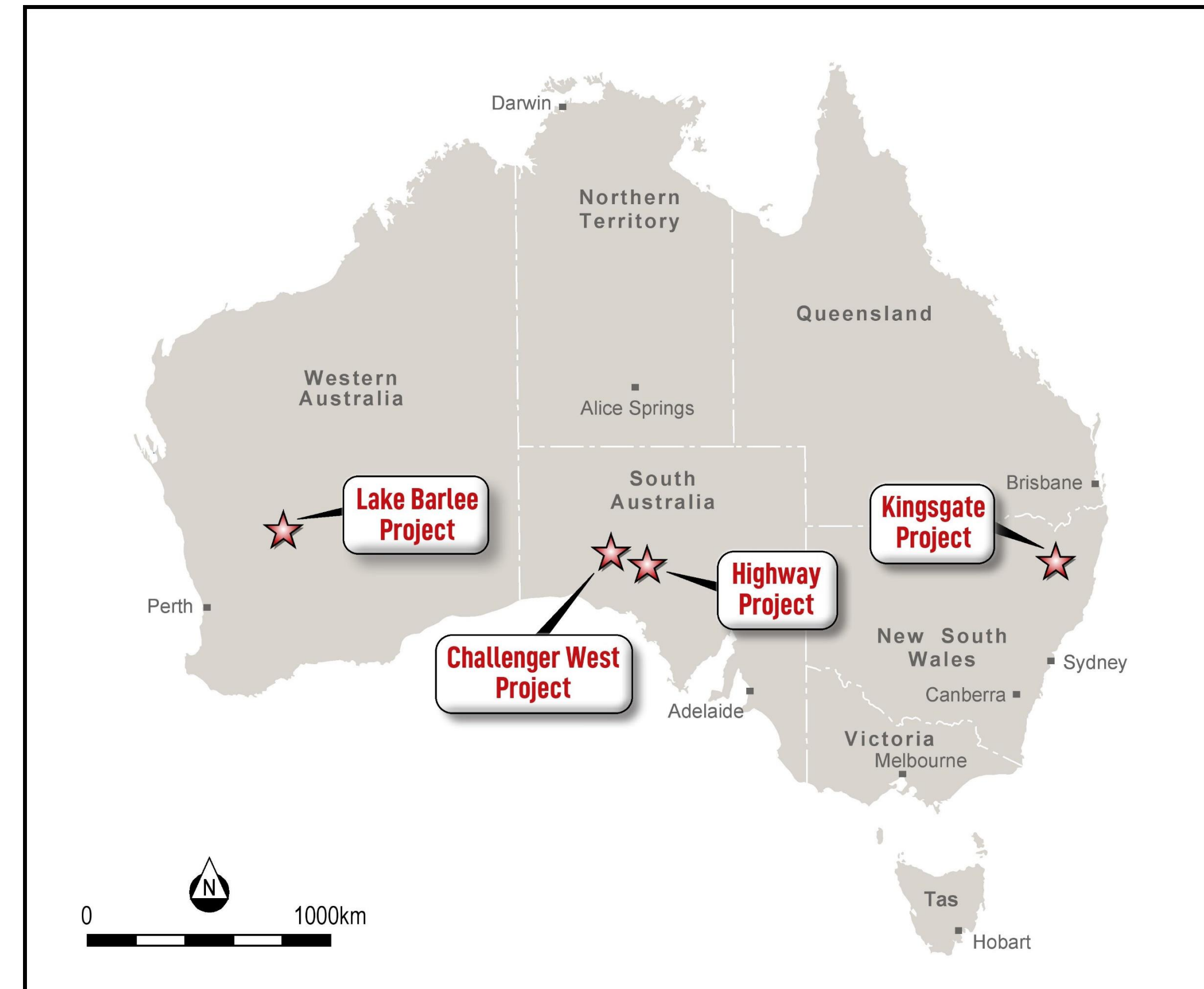
- Tenure of 2,930sqkm
- Provincial Mineral System Tenure
- Multi Commodity Prospectivity – Porphyry, Epithermal, IOCG

Kingsgate Project : New South Wales

- Tenure of 294.10sqkm
- Advanced production pathway with High Purity Quartz.
- High Value Commodity

Lake Barlee Project : Western Australia

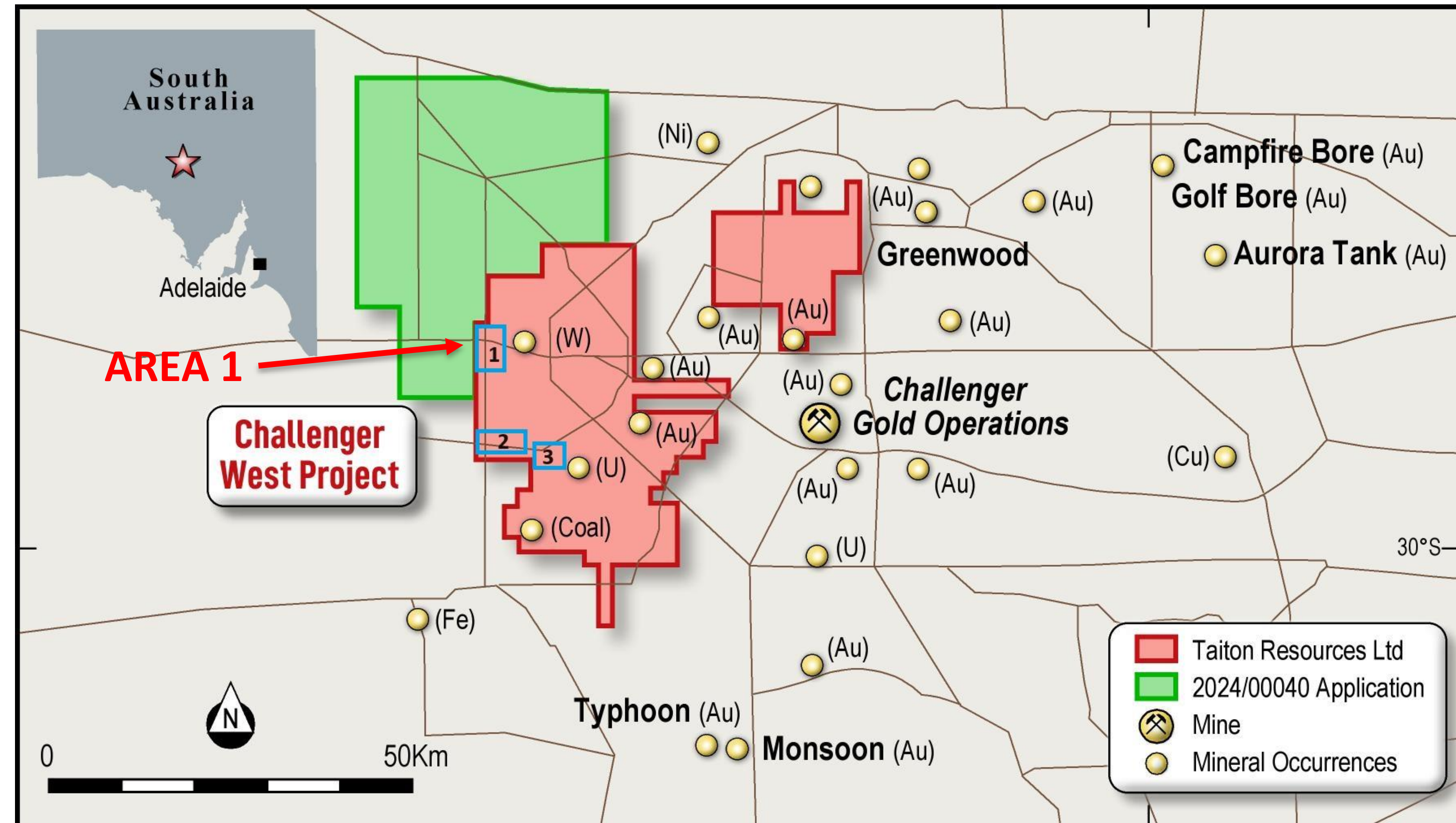
- Tenure of 668.70sqkm
- Gold and REE Mineralisation



Challenger West Project

Encouraging Gold Targets – Drilling Stage

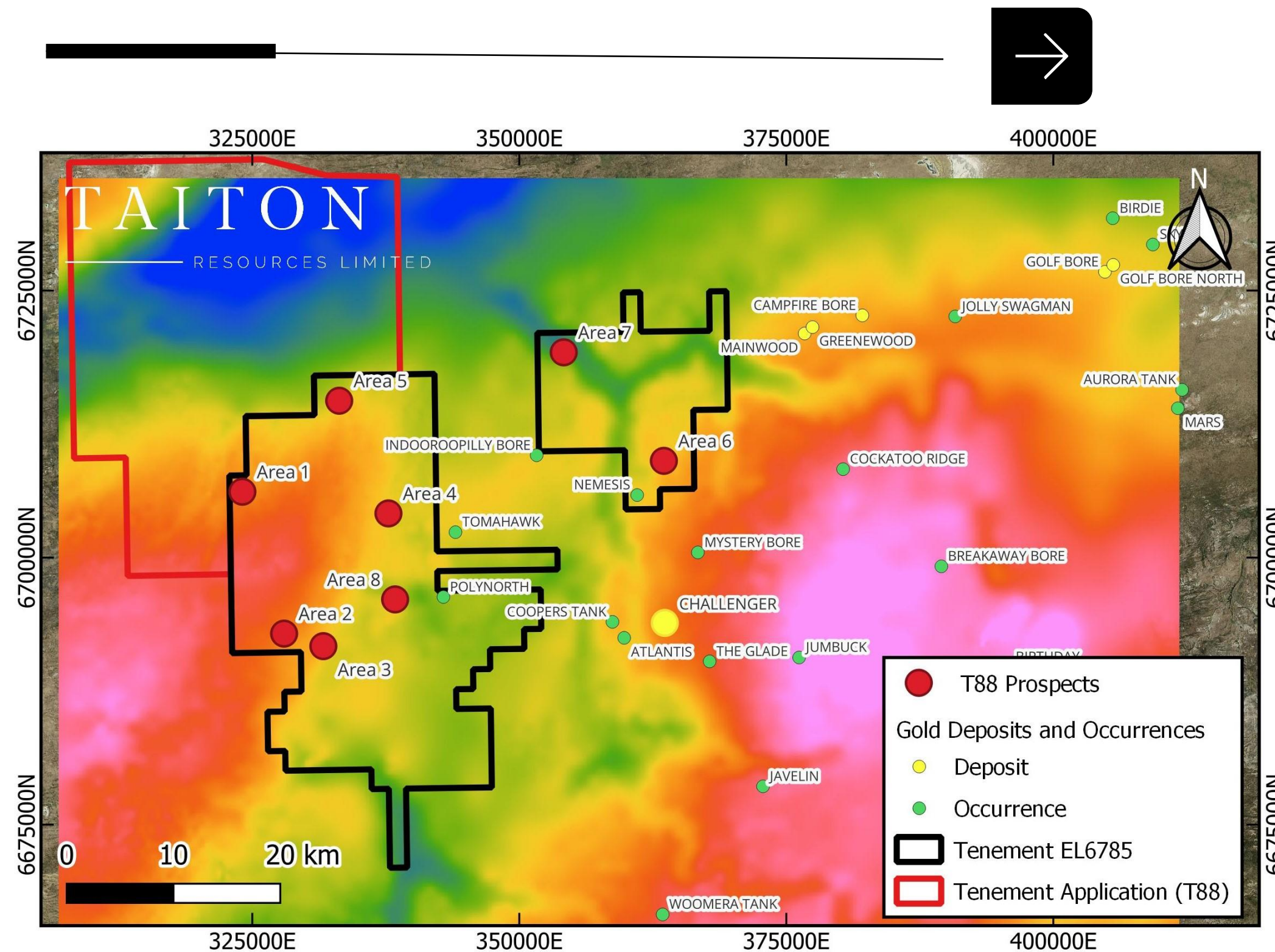
- Unlocking an unexplored Region.
- Last major exploration program in the 1990s
- Reinterpreting existing geophysical imagery has opened the prospectivity of the Challenger District.
- UF Soil Sampling has identified mineralisation consistent with Challenger Gold Mine.
- Drill Ready Targets awaiting Heritage and Site Clearances.
- Approx. 40km from the Challenger Gold Mine with a Milling solution.



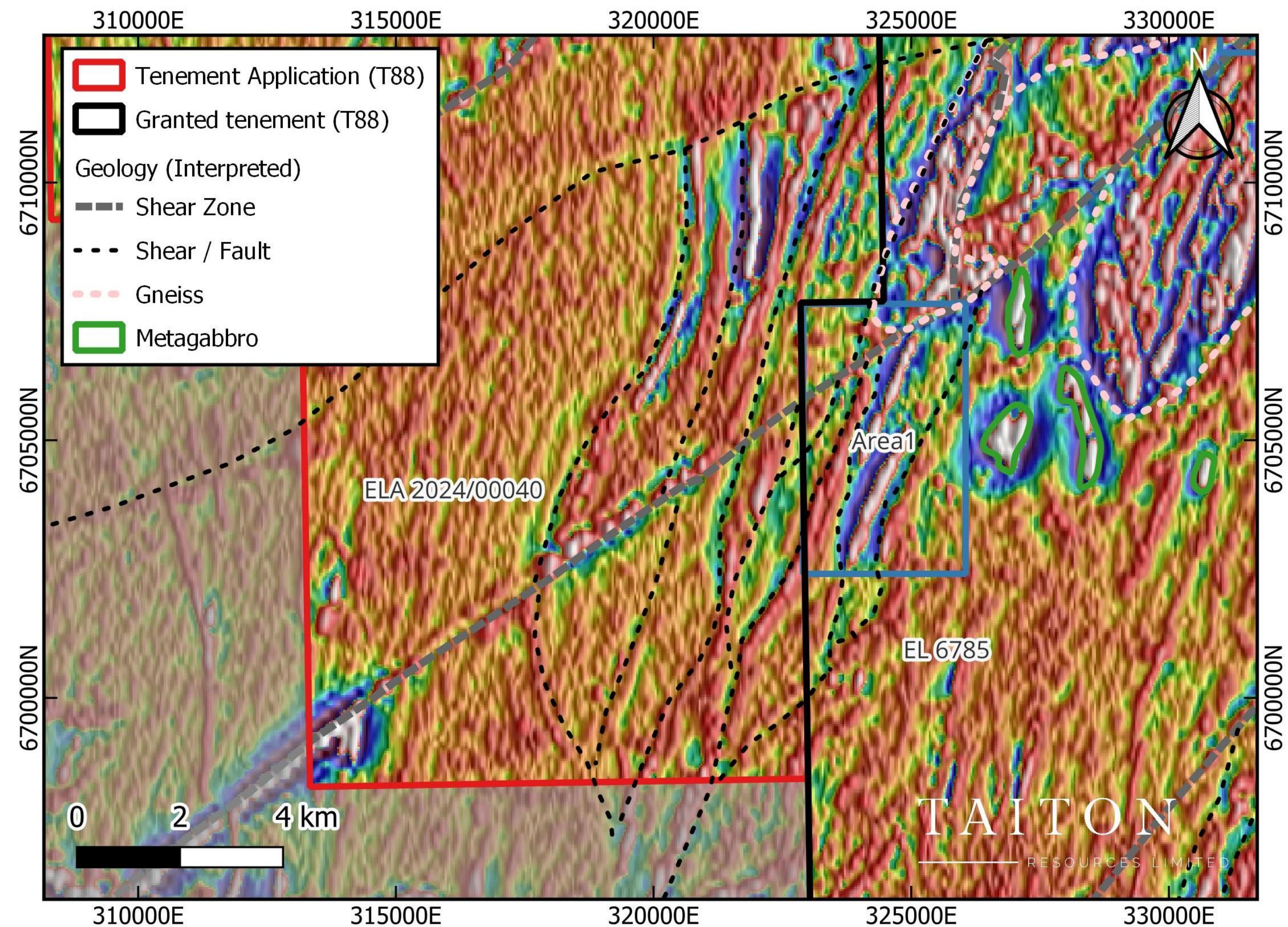
Taiton Gold Exploration Footprint

Challenger West – Area 1

Consistent Geophysical Features



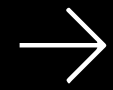
- Taiton applied for the ground (ELA 2024/00040) based on the position of gravity highs found in the same basement terrane setting as the Challenger deposit



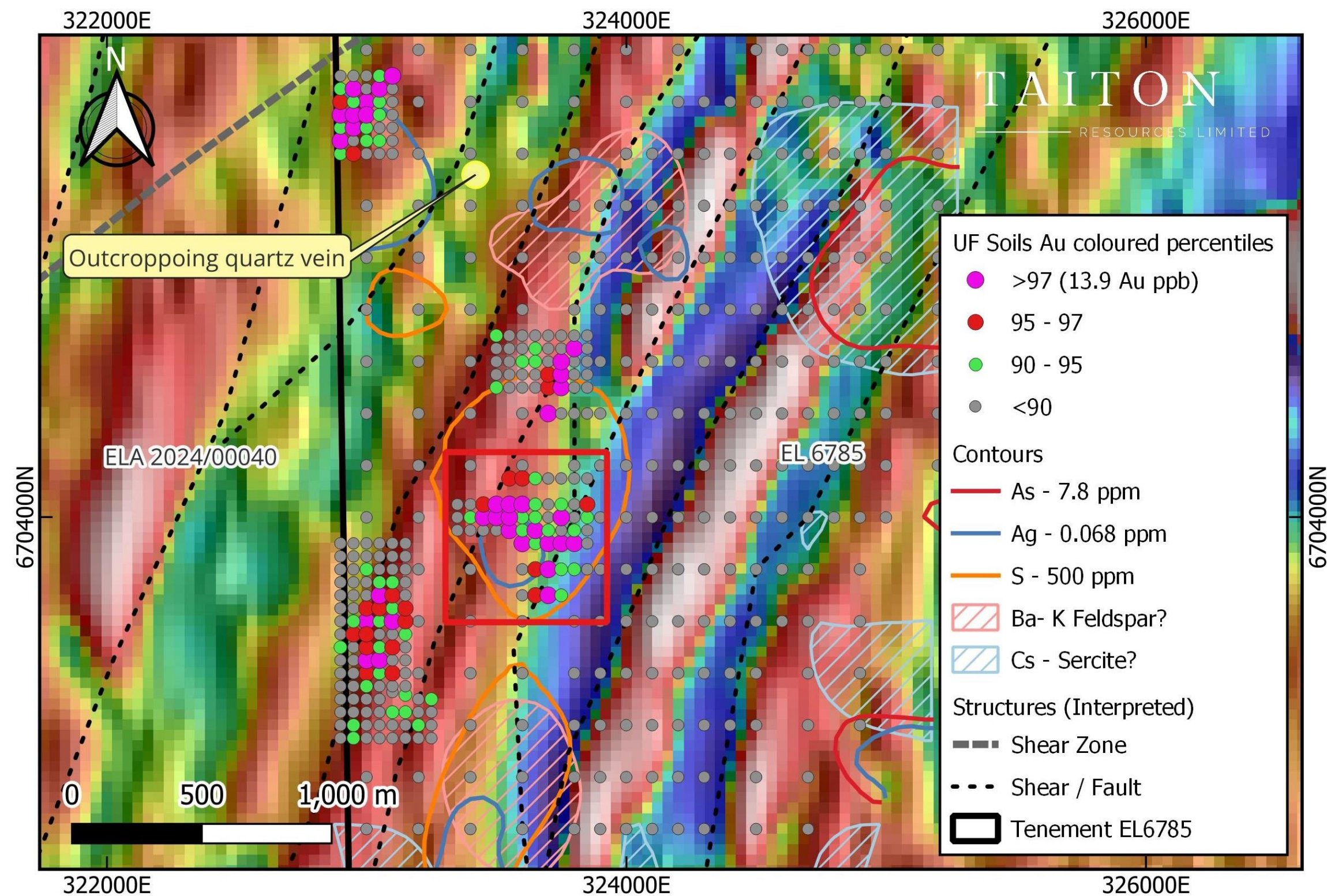
- Within this area recent reprocessed aeromagnetic imagery indicated the continuation of north-northeast trending structures as interpreted in Area 1

Challenger West – Area 1

Coincident Geochemistry and Structure



- A coherent gold (maximum value of 59.6 ppb Au) anomaly was identified coincident to an interpreted north-northeast trending structure.



Challenger Gold Deposit

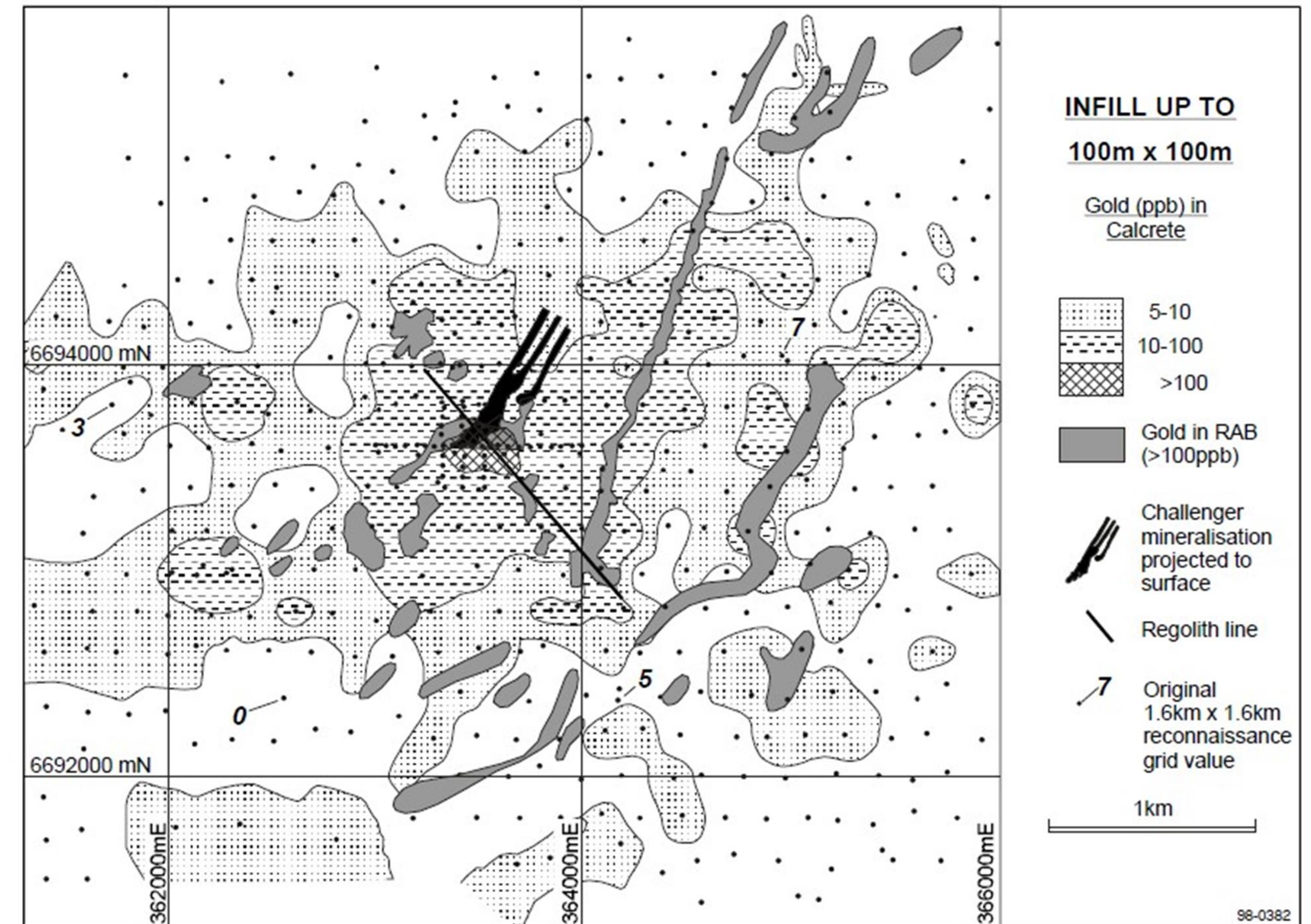
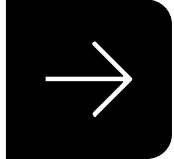


Fig. 4 Plan showing Au in calcrete anomaly, mineralisation (as defined by RAB), ore shoots (as defined by RC) and the regolith line referred to in this study. (modified from Bonwick, 1997).

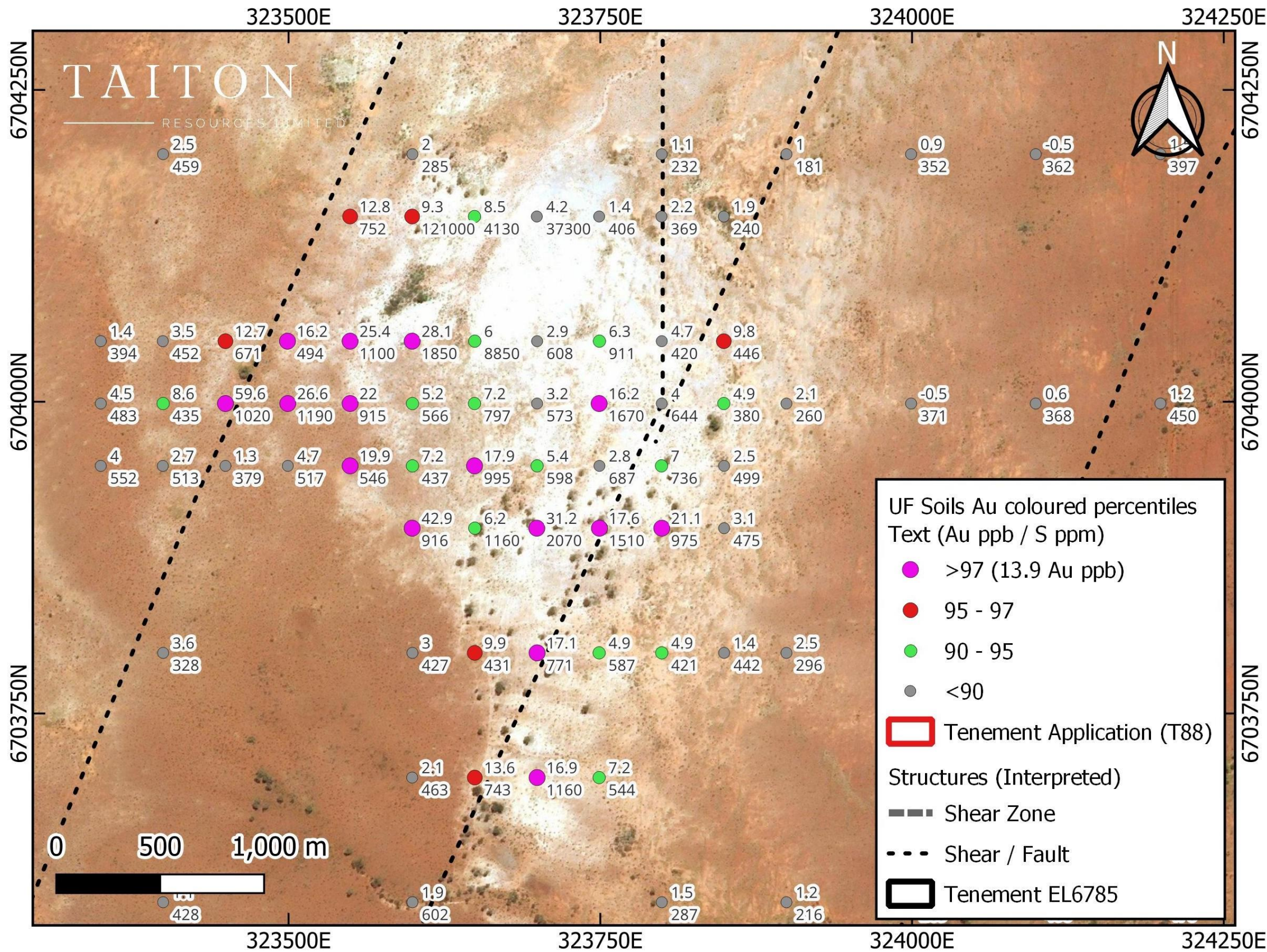
Understanding the controlling mineralising factors in the region is the Key to Success – Structure and Geochemistry.

Challenger West – Area 1

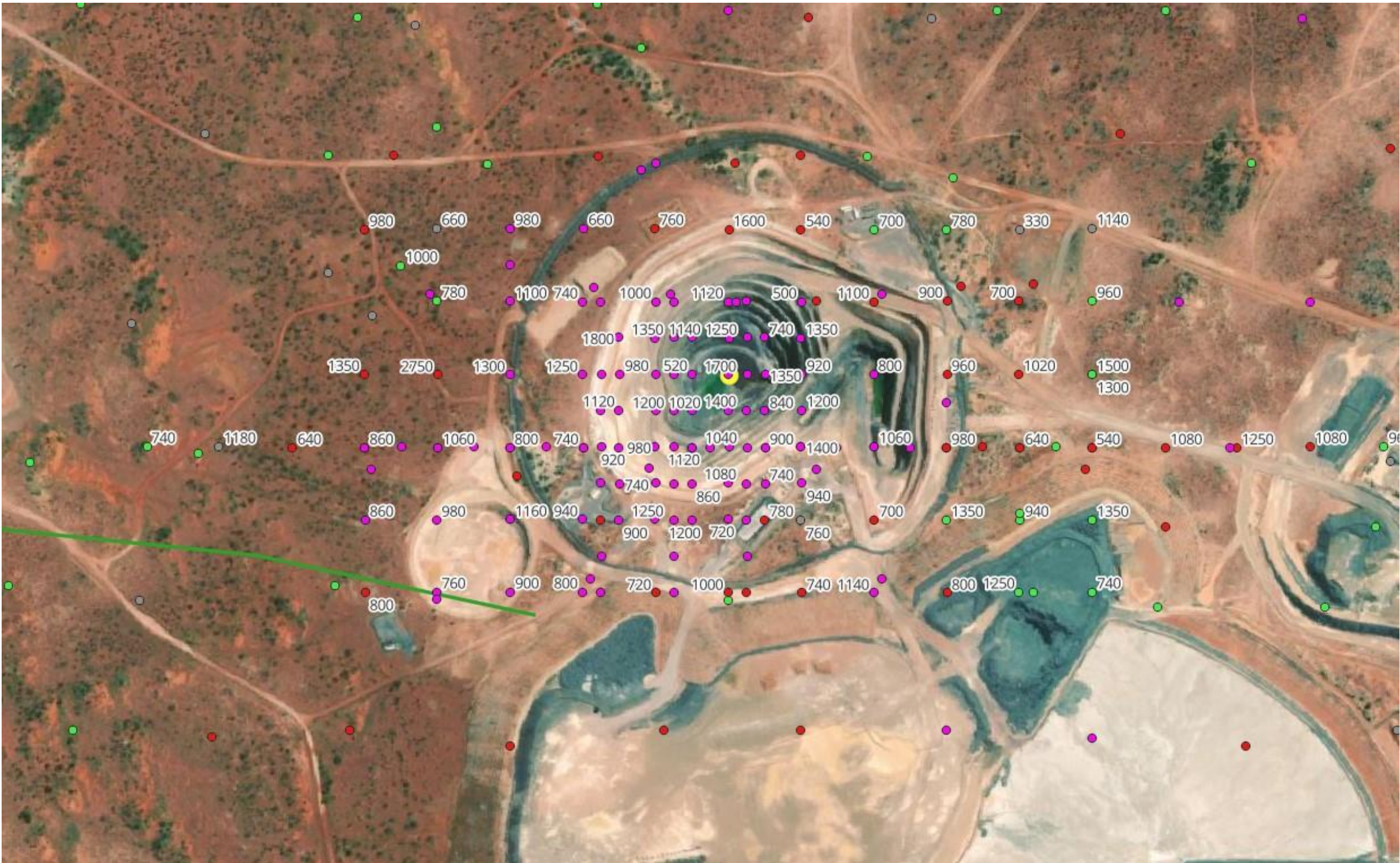
Significance of Pathfinder Minerals



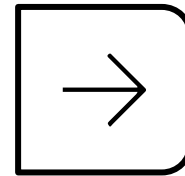
UltraFine Au and S – Area 1, Challenger West Project



Calcrete Au and S - Challenger Gold Mine

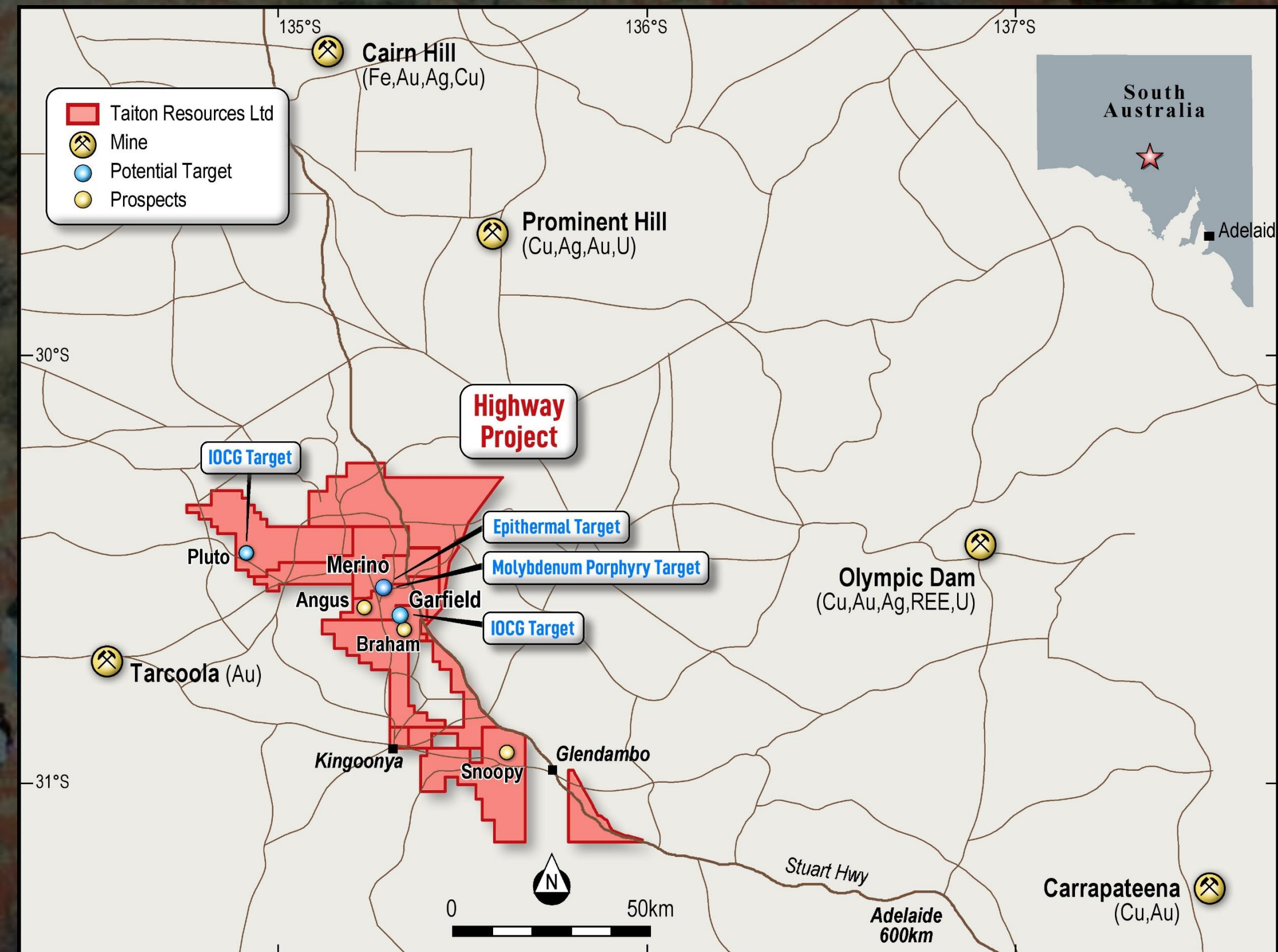


The Highway Project Is All About New Mineral Provinces.



- Exploration for Future Proof Commodities.
- Identified potential for :
- **IOCG** - coincidence of magnetic and significant gravity anomalies,
- **Porphyry/Intrusive** – large scale Molybdenum mineralisation related and
- **Epithermal** – IP Survey and observed mineralisation
- Large Conceptual Targets that will be World-Class.
- The next wave of Discovery will be in areas that have been neglected.

Safe Jurisdiction



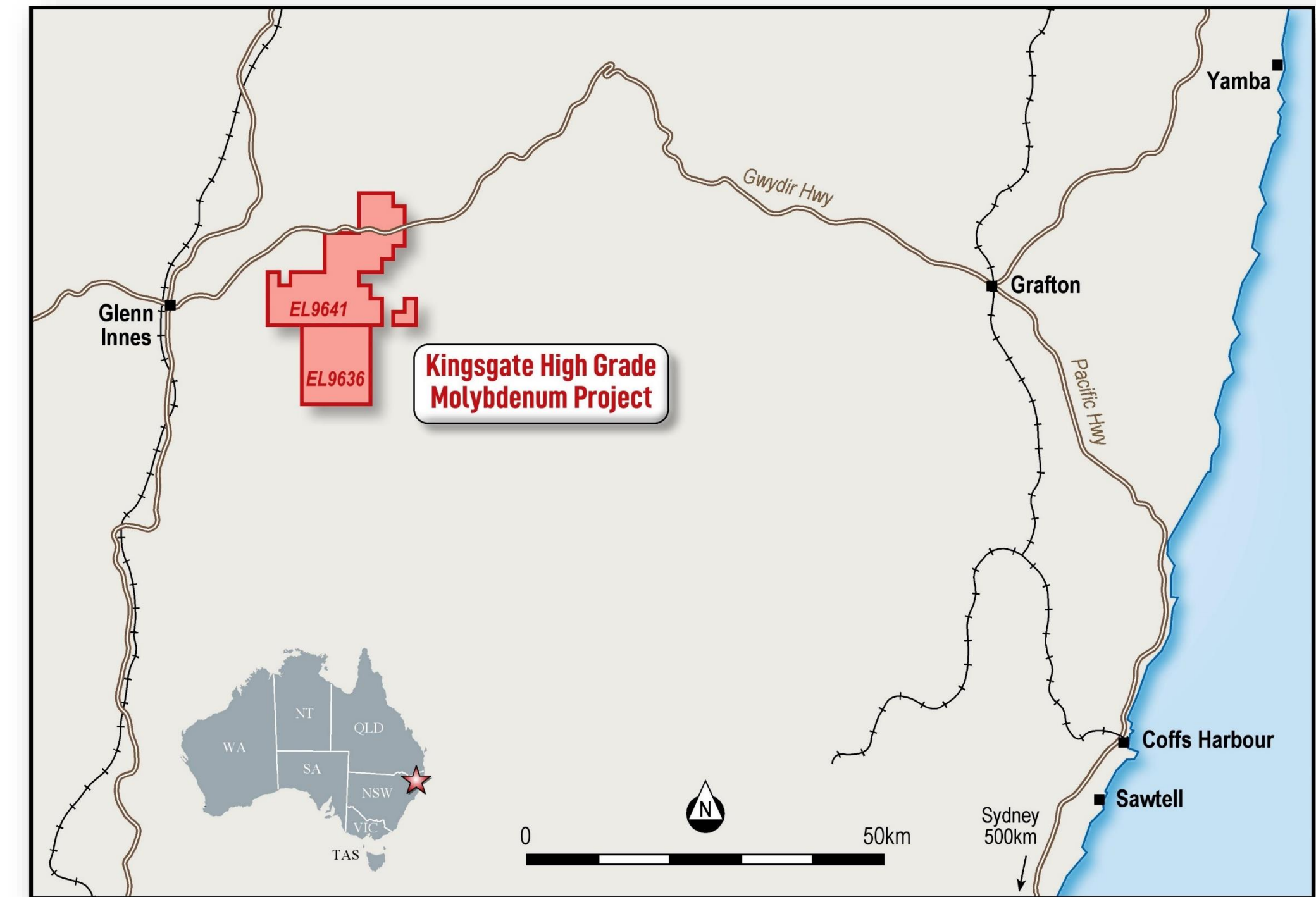
**Multiple Prospects and Mineralisation Style
identifying the potential for multiple commodity
occurrences.**

The Kingsgate Opportunity

A Hidden Tier 1 Asset



- 1.** EL 9641 and EL 9636,
Located 20km east of Glen Innes, 600km NE of Sydney and
400 km from the Port of Brisbane.
- 2.** Over 15,000m of drilling completed between 2005
and 2009 with clear pathway to production.
- 3.** Previous advanced positive scoping studies and metallurgical
tests showing 99.95% high grade purity for in
situ quartz samples.
- 4.** Highly Sought after **High Purity Quartz** Business in critical
mineral markets.



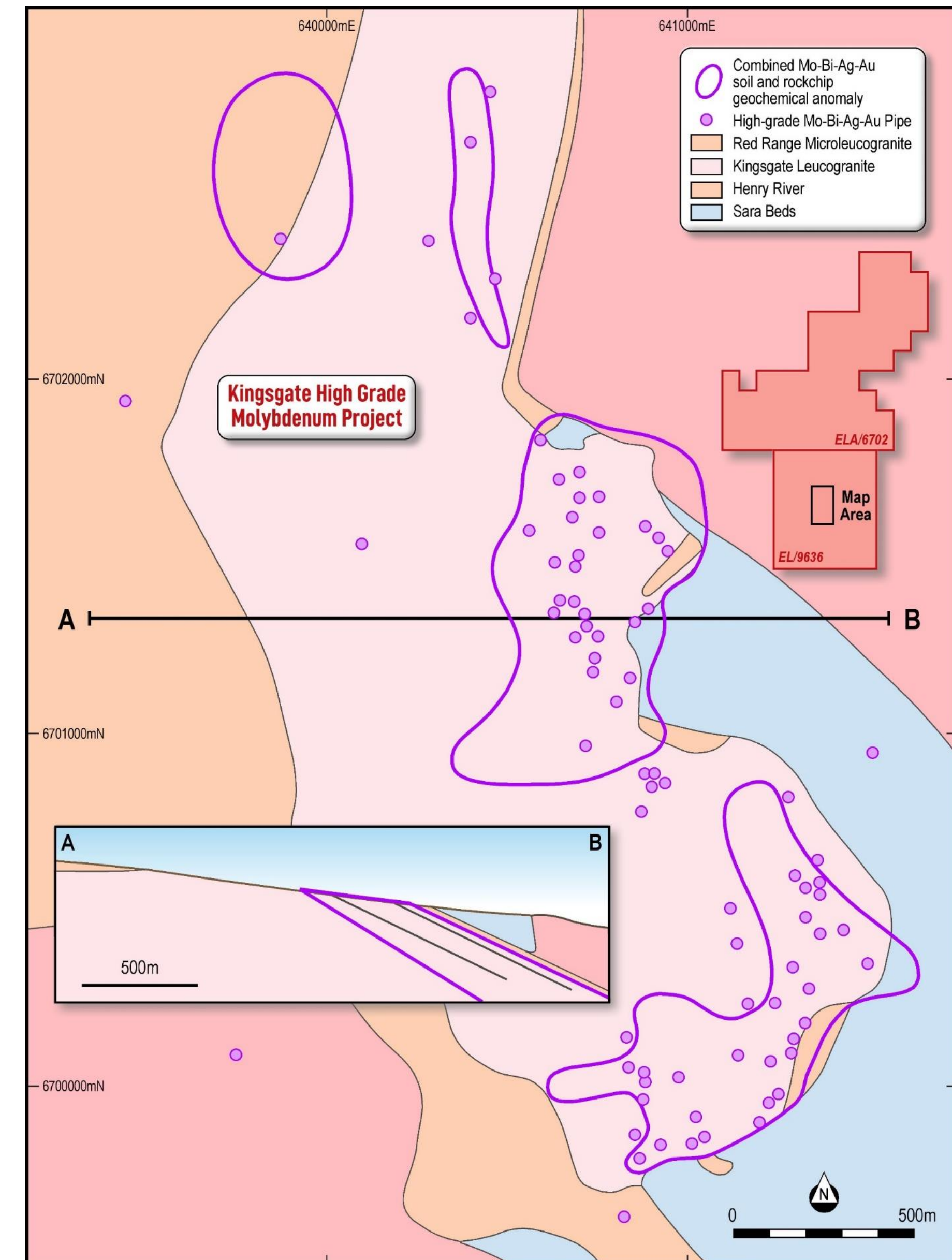
Kingsgate Project



- 1.** • 54 pipes to 20m Diameter Worked to 50 m depth. In Roof and Contact of Granite.
- 2.** • 94 Mo-Bi Pipes Mapped Along a 5km N-S Trending Belt.

History of Kingsgate Quartz:

- Mined in WWII for piezo electric quartz.
- Mined for flawless quartz in radio equipment.
- Mined in 1989 for semi conductors.
- Recognised as potential source of high purity quartz for the semiconductor industry by NSW Resources Authority and INDMIN.



News Flow for 2024

	Challenger West (Gold)	Highway (Polymetallic)	Kingsgate (High Purity Quartz)
Second half of 2024	<ul style="list-style-type: none">• Infill Soils at Area 1,• Heritage Survey• Maiden drilling at Area 1• Regional infill Survey for target generation.• Regional geophysical interpretation.• Investigate project generation.	<ul style="list-style-type: none">• Completion of interpretation of Gravity Survey for IOCG targeting.• Reviewing IOCG, Epithermal and Molybdenum Porphyry targets.• Heritage Survey for to support drilling.	<ul style="list-style-type: none">• On going Land Access Agreements.• Geophysical Review of the entire Kingsgate project.• Initiating HPQ discussions with off-takers.• Potential Molybdenum, Bismuth and Silver credits.

Taiton is Focused on Creating A Mineral Resource Business

Wealth Creation is the Pursuit of Mineral Exploration.

Understanding Geology is the Key to Our Strategy

Mineral Systems Control Mineralisation