



Motheo Copper Mine

Development and Construction Update

19 October 2022

Creating Value through Opportunity



Important Information and Disclaimer

This presentation has been prepared by Sandfire Resources Ltd (**Sandfire** or **the Company**) and contains information about Sandfire current at the date of this presentation. The presentation is in summary form, has not been independently verified and does not purport to be all inclusive or complete. The Company is not responsible for providing updated information and assumes no responsibility to do so. Recipients should conduct their own investigations and perform their own analysis in order to satisfy themselves as to the accuracy and completeness of the information, statements and opinions contained in this presentation.

This presentation is for information purposes only. Neither this presentation nor the information contained in it constitutes an offer, invitation, solicitation or recommendation in relation to the purchase or sale of shares in any jurisdiction and may not be distributed in any jurisdiction except in accordance with the legal requirements applicable in such jurisdiction. Recipients should inform themselves of the restrictions that apply in their own jurisdiction. A failure to do so may result in a violation of securities laws in such jurisdiction.

This presentation does not constitute investment advice and has been prepared without taking into account the recipient's investment objectives, financial circumstances or particular needs and the opinions and recommendations in this presentation are not intended to represent recommendations of particular investments to particular persons. Recipients should seek professional advice when deciding if an investment is appropriate. All securities transactions involve risks, which include (among others) the risk of adverse or unanticipated market, financial or political developments.

To the fullest extent permitted by law, Sandfire, its related bodies corporate, and each of their officers, employees, agents and advisers expressly disclaim, to the maximum extent permitted by law, all liabilities (however caused, including negligence) in respect of, make no representation or warranty, express or implied, as to the currency, accuracy, reliability or completeness of any information, statements, opinions, estimates, forecasts or other representations contained in this presentation. No responsibility for any errors or omissions from this presentation arising out of negligence or otherwise is accepted.

Certain statistical and other information included in this presentation is sourced from publicly available third party sources and has not been independently verified.

This presentation should be read in conjunction with the Company's other ASX announcements available on our website at www.sandfire.com.au.

This presentation is authorised for market release by Sandfire's Acting CEO, Mr Jason Grace.

Key assumptions

Currency: unless otherwise stated, all figures are in USD.

Figures, amounts, percentages, estimates, calculations of value and other factors used in this presentation are subject to the effect of rounding.

Forward-Looking Statements

This presentation may include forward-looking statements regarding Sandfire's Mineral Resources and Reserves, exploration and project development, operations, production rates, life of mine, projected cash flow, capital expenditure, operating costs and other economic performance and financial condition as well as general market outlook. Although Sandfire believes that the expectations reflected in such forward-looking statements are reasonable, such expectations are only predictions and are subject to inherent risks and uncertainties which could cause actual values, results, performance or achievements to differ materially from those expressed, implied or projected in any forward looking statements and no assurance can be given that such expectations will prove to have been correct.

Accordingly, results could differ materially from those set out in the forward-looking statements as a result of, among other factors, changes in economic and market conditions, delays or changes in project development, success of business and operating initiatives, changes in the regulatory environment and other government actions, fluctuations in metals prices and exchange rates and business and operational risk management.

Except for statutory liability which cannot be excluded, each of Sandfire, its officers, employees and advisors expressly disclaim any responsibility for the accuracy or completeness of the material contained in these forward-looking statements and excludes all liability whatsoever (including in negligence) for any loss or damage which may be suffered by any person as a consequence of any information in forward-looking statements or any error or omission. Sandfire undertakes no obligation to update publicly or release any revisions to these forward-looking statements to reflect events or circumstances after today's date or to reflect the occurrence of unanticipated events other than required by the Corporations Act and ASX Listing Rules. Accordingly, you should not place undue reliance on any forward-looking statement.

Motheo Copper Mine

Building a world-class copper mine in Botswana

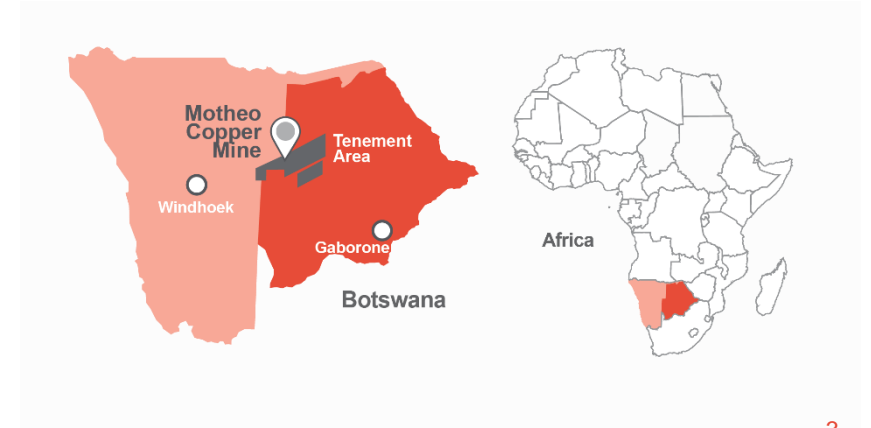
Development of Sandfire's Motheo Copper Mine (3.2Mtpa):

- Proceeding on time with first production scheduled from the June 2023 Quarter
- Construction activities well advanced with over 1,800 personnel on site, and key infrastructure items well progressed
- US\$140M Motheo Project Finance Facility executed with first draw-down, for US\$55M, completed in October 2022

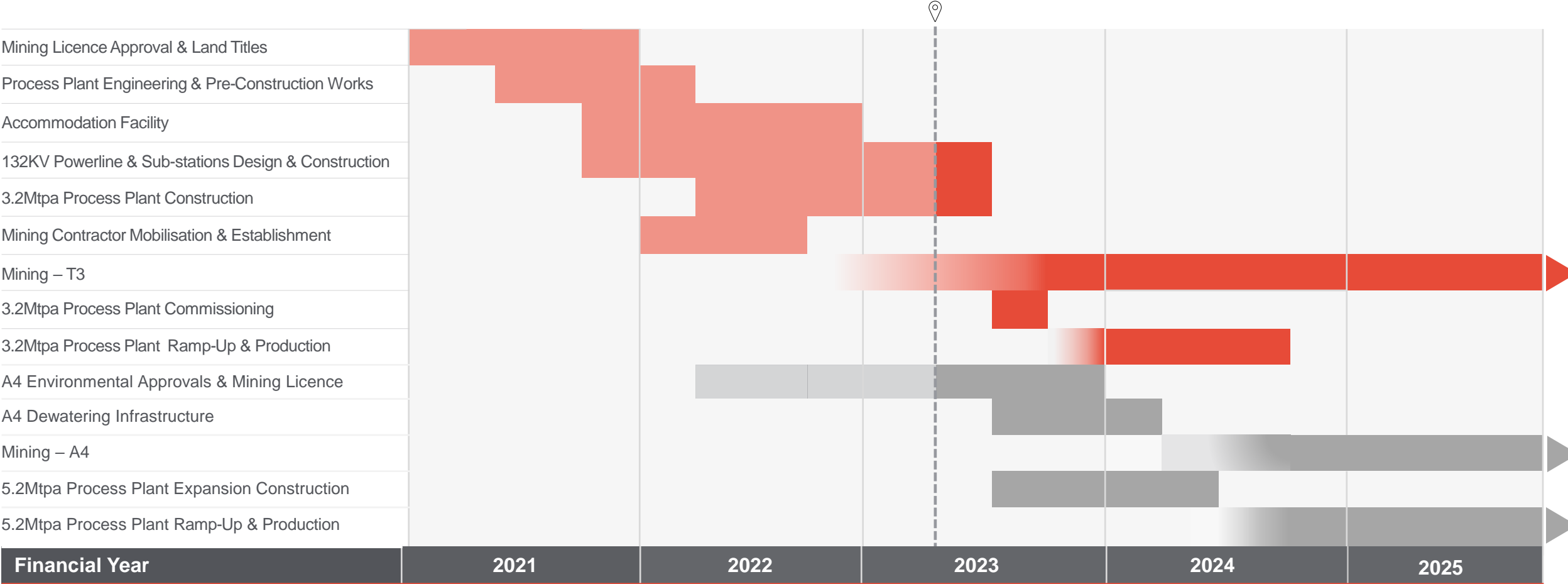
Positive 5.2Mtpa Motheo Expansion Case Definitive Feasibility Study (DFS):

- Confirms strong business case for development of the A4 Deposit as part of an expanded **5.2Mtpa Motheo Production Hub**
- Outstanding project economics including a pre-tax NPV_{7%} of **US\$548M** and IRR of 29%

Construction of Motheo is being **funded through a combination of cash and the proceeds of the Project Finance Facility**, underpinning the current 3.2Mtpa development ahead of expansion of the operations to 5.2Mtpa driven by the inclusion of the A4 Open Pit

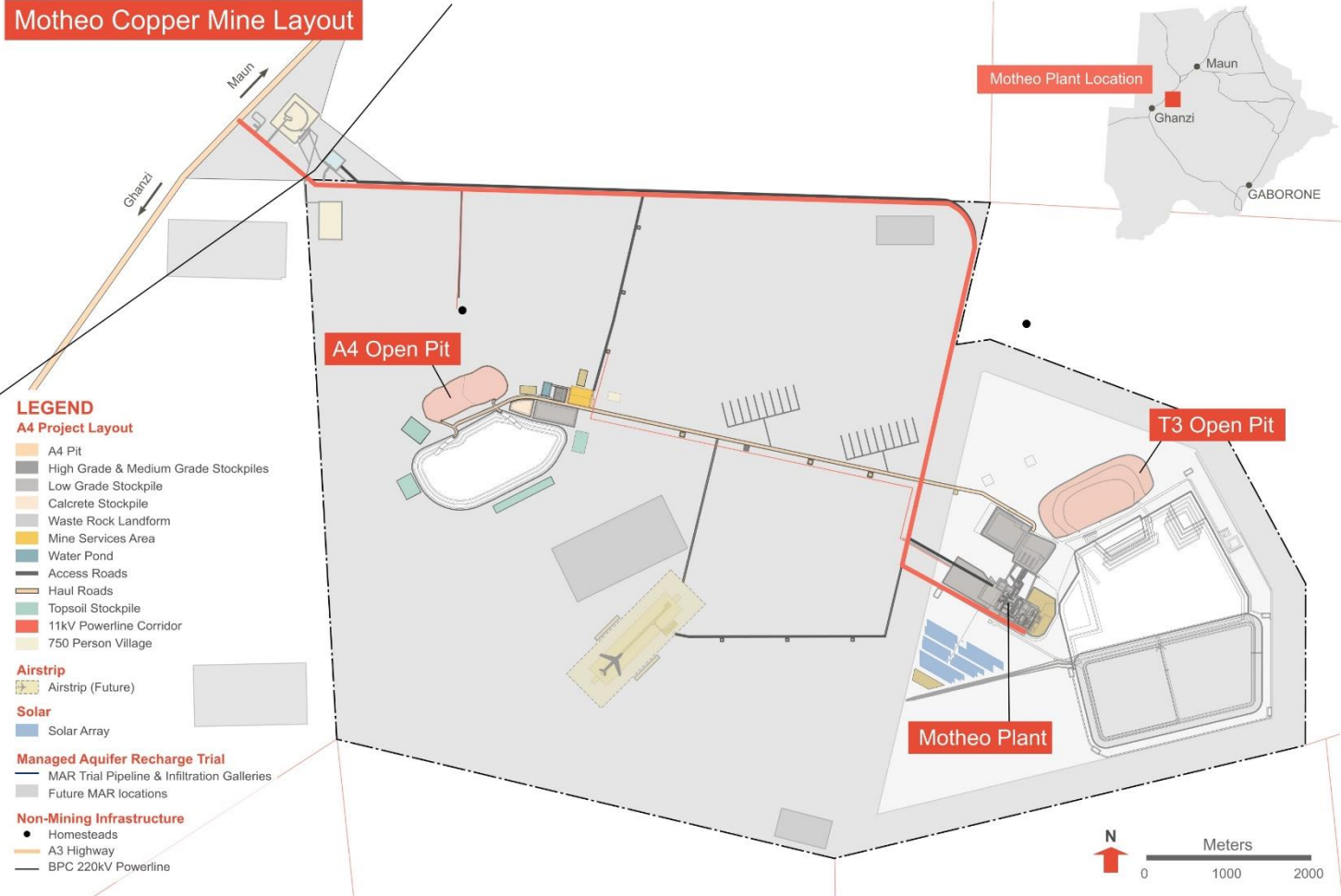


Motheo Copper Mine | Development Timeline



Motheo Copper Mine

Proposed Mine Layout



Motheo

Supporting our communities

Our Motheo community framework pillars



Community Health

Improved outcomes for the physical and mental **well-being** of the broader community



Education

Encourage attendance at schools, improve learning **outcomes among young children** and provide capacity building



Female Empowerment

Support equality, inclusiveness and empowering women



Youth Development

Promote training and **employment opportunities** to youths within our local communities

Motheo

Supporting our communities



Community Health

Improved outcomes for the physical and mental well-being of the broader community

Sandfire is focused on supporting the health and well-being of our employees and local communities. As part of this, we recently hosted an annual Health and Wellness Day with the theme being 'O shapo' (You Okay).

The event commenced with aerobics sessions led by a local professional trainer, followed by an educational talk on several topics, including financial literacy, prevention and support for gender-based violence, and the importance of regular screening for the detection of potential health disorders in asymptomatic individuals.

Dr Musina of Bozogo Private Clinic delivered a message of encouragement to our employees and reiterated the importance of early detection for preventable diseases, and how lifestyle changes can help to reduce the risk.

Motheo Copper Mine

Development and Construction Pictorial Update



Motheo Copper Mine Development and Construction Pictorial Update



T3 Open Pit Mining Continues

- AMS work on a 24-hour basis
- All 4 Excavators - 2 EX1900 and 2 EX2600 operational
- Fleet of 15 trucks on site with 12 operational and three under construction



T3 Open Pit with Waste Dump in background

- 5.2M BCM total material movement to date (to end of Sep 2022)
- Drill and blast activities on full 10m benches
- Waste haulage to Stage 1 Tailings Storage Facility (TSF) 90% complete

Motheo Copper Mine Development and Construction Pictorial Update



T3 Deposit Mine Pit Area

- Stage 1 Open Pit with mine water storage sump on left of Stage 1 Pit
- ~40,000 BCM per day mined
- Main haul roads in place
- Dewatering bores, pipes and powerlines under construction

Motheo Copper Mine Development and Construction Pictorial Update



Stage 1 T3 Open Pit development

- Mining progressing on schedule
- Interim sumps constructed for mine water



ROM Pad complete, gyratory crusher in foreground

- ROM pad ready for first ore (mined in October)
- Installation of crusher underway

Motheo Copper Mine Development and Construction Pictorial Update



Tailings Storage Facility (TSF) under construction

- Bulk waste haulage and placement 90% complete
- HDPE Lining and basin preparation progressing



Motheo Copper Mine Development and Construction Pictorial Update



Motheo Mine Village

- 752 rooms completed and in use
- Village buildings all completed and landscaping continuing
- Pictured - Mine Village gym and pool

Motheo Copper Mine Development and Construction Pictorial Update



Motheo Process Plant area

- Process Plant ~500 construction workforce
- Administration and clinic buildings (right of picture) now in use



Motheo Mining Services area

- Mining workshop and washdown facility advance
- Mining Administration office (foreground) in use

Motheo Copper Mine Development and Construction Pictorial Update



Stockpile Feed Conveyor

- Head end of Stockpile Feed Conveyor (CV2) erected
- CV1 and CV2 structurally complete



Motheo Process Plant

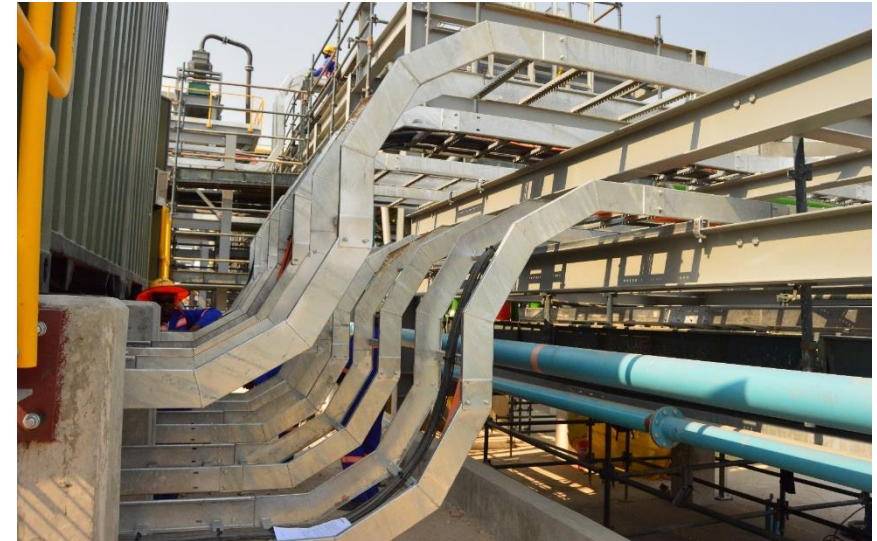
- Process water tank plate welding advanced
- Tailings Thickener erection progressing

Motheo Copper Mine Development and Construction Pictorial Update



Tails Thickening Area

- Electrical installation underway
- All switch-rooms on site and erected



Motheo Copper Mine Development and Construction Pictorial Update



Flotation Building

- Flotation Building progressing
- Four out of seven 50m³ Rougher Cells placed



SAG Mill Feed spout

- Feed spout assembled

Motheo Copper Mine Development and Construction Pictorial Update



Motheo Process Plant Construction

- Cranes in action



8 MW SAG Mill Erection

- Two of four shell quarters lifted into place

Contact Details




 +61 8 6430 3800

 +61 8 6430 3849

 www.sandfire.com.au

 Corporate Head Office
Level 2, 10 Kings Park Road
West Perth WA 6005 Australia

 PO Box 1495
West Perth WA 6872 Australia