



**ARDIDEN**  
30 January 2023

## DECEMBER 2022 QUARTERLY ACTIVITIES REPORT

### HIGHLIGHTS

- ✓ **FULLY FUNDED GOLD EXPLORATION THROUGH 2024:** Sale of remaining 20% interest in the Lithium Joint Venture to joint venture partner, Green Technology Metals (ASX: GT1), completed securing a further A\$16 million cash (and further A\$2.5 million deferred cash payable upon delineation of 20Mt JORC Mineral Resource within the joint venture area).
- ✓ **SECURED 100% OWNERSHIP PICKLE LAKE GOLD PORTFOLIO:** Earn-in Option Agreement completed with Exiro Minerals Corp, securing 100% of the New Patricia property, located within the highly prospective Western Hub of Ardiden's Pickle Lake Gold Project.
- ✓ **IDENTIFIED BROAD GOLD MINERALISATION WESTERN HUB:** Review of complete 2022 drill programme results with industry specialists identifies the significance of the broad, anomalous mineralised zones intercepted in secondary and tertiary parallel structures within the Dorothy and Dobie prospects.

These secondary and tertiary structures remain open at depth and along strike with over 30km of untested ground and include the following results:

- DR22-01 30.65m @ 1.57 g/t Au from 31.85m (Dorothy - ASX 17 Aug 2022)
  - DR22-02 38.48m @ 0.97 g/t Au from 50.52m (Dorothy - ASX 26 Sept 2022)
  - DB22-01 26.51m @ 2.1g/t Au from 77.8m (Dobie – ASX 26 Sept 2022)
- ✓ A structural targeting workshop, conducted with industry experts during the quarter, was completed in the quarter to assist with the drill hole planning to test the continuity of the lithology.
  - ✓ One new permit was received during the quarter along with the submission of the remaining four new exploration permits to the Ontario Mines Department, allowing the company to provide a 100% fully owned and fully permitted district-scale Pickle Lake Gold Project in 2023.

Ardiden Limited ('Ardiden' or 'the Company') (ASX: ADV) is pleased to report on its Quarterly Activities at its highly prospective Pickle Lake Gold Project in northwest Ontario, Canada (Figure 1).

### **Sale of Final 20% of Lithium Joint Venture**

During the quarter, Ardiden announced and completed the sale of the remaining 20% of the Lithium Joint Venture to GT1. Consideration comprised A\$16 million (plus a deferred consideration component of A\$2.5 million, payable upon GT1 reporting a JORC Mineral Resource of 20Mt at the Joint Venture tenements). This transaction has provided the Company with robust financial resources to target the board anomalous zones across the Dorothy and Dobie Prospects identified during the 2022 drill programme.

Of the total A\$16 million paid at completion, A\$8 million was received from GT1 with the residual A\$8 million being held in trust, subject to Canadian withholding tax. Ardiden expects the majority of the residual A\$8M to be remitted back to Ardiden following the filing of its tax return and receipt of a tax clearance certificate from Canada Revenue in the second half of the financial year.

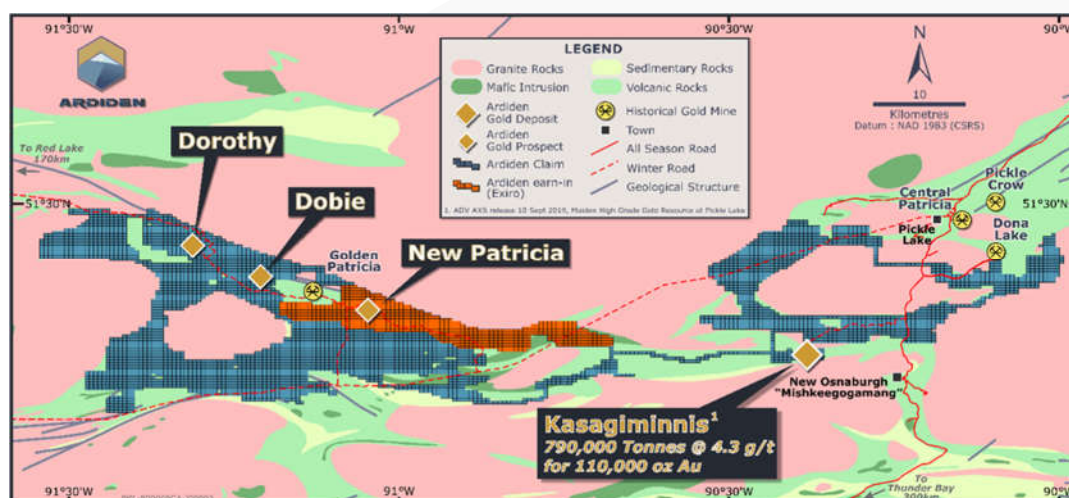
Ardiden continues to retain 5.14% equity holding of GT1, escrowed until November 2023.

### **100% ownership of New Patricia (Western Hub – Pickle Lake Gold Project)**

The completion of Ardiden's earn in agreement with Exiro Minerals Corp for the New Patricia property was the final step in securing 100% ownership across the entire Pickle Lake Gold Project. The New Patricia property extends over 30 km of this prospective geological setting, and is directly along strike from the Golden Patricia mine which produced **619,796 oz Au @ 15.2 g/t Au<sup>1</sup>** between 1988-1997.

The Golden Patricia mine adjoins Ardiden's Dorothy-Dobie Gold Prospect, where recent drilling intersected broad zones (26-38m wide) of mineralisation in a parallel secondary structure (see ASX Announcements: 17 Aug and 26 Sept 2022) to the narrow high-grade primary structure that extends for over 60km across the Company's Western Hub.

In addition to fulfillment of all work commitments, Ardiden paid final consideration comprising 20 million fully paid ordinary shares and C\$100,000 during the quarter.

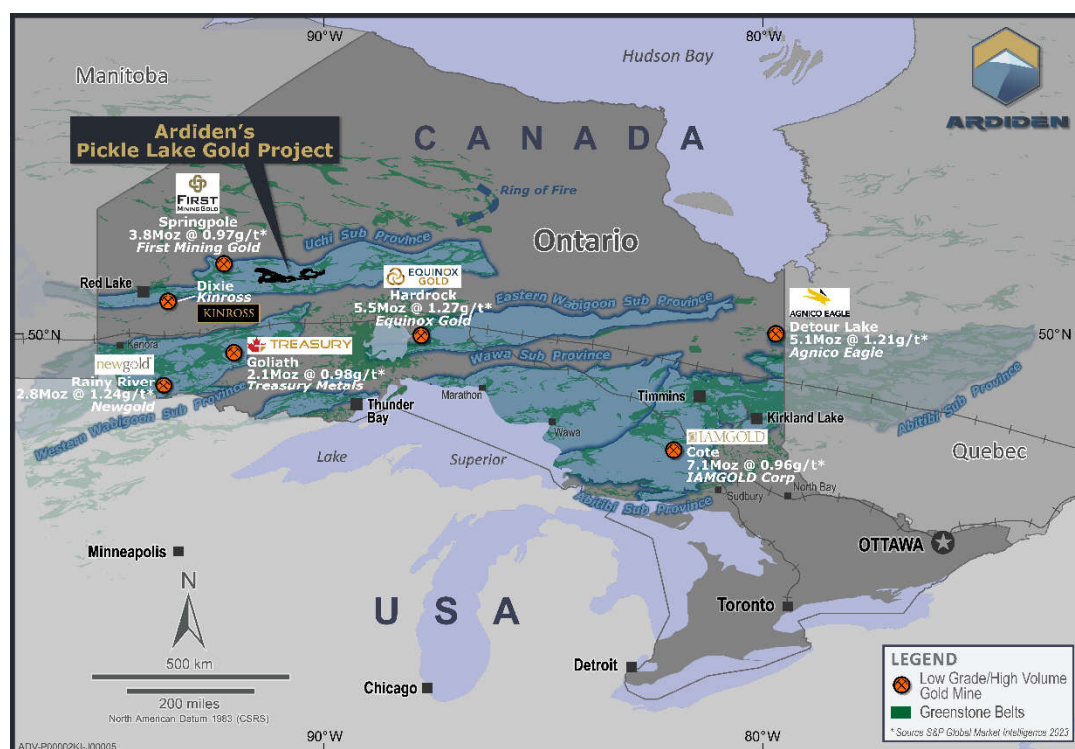


**Figure 1 – Geology of Ardiden's Pickle Lake Gold Project and the New Patricia property.**

<sup>1</sup> Information in relation to historical gold production at the Pickle Lake Gold Camp, and Golden Patricia Mine in Figures and notes above have been referenced from three sources of publication, namely:  
 1. Harron, G. A. 2009. Technical Report on Three Gold Exploration Properties Pickle Lake Area, Ontario, Canada. G.A. Harron, P.Eng., G.A. Harron & Associates Inc.

## **GOLD EXPLORATION ACTIVITIES – Western Hub – Pickle Lake Gold Project**

The Pickle Lake Gold Project is a continuous District-Scale landholding, located east of Red Lake in the well-endowed Uchi Geological sub-province of north-western Ontario, Canada (Figure 2). The Uchi Province is host to numerous currently producing gold mines at Red Lake and at Musselwhite, and is a highly active exploration area with Evolution, Newmont, Kinross, and numerous other exploration companies all actively pursuing gold exploration work in the area.



**Figure 2 – Location of Ardiden's Pickle Lake Gold project within the Uchi Belt of northwest Ontario<sup>2</sup>.**

Ardiden's 2022 exploration programme focused on the **Western Hub** testing four gold prospects along a 20 km strike length. This included 43 holes for 5,939 m of fully oriented diamond core to a maximum depth of 252m, with the majority targeting the **primary structure** that hosts the Golden Patricia geological sequence and historical Golden Patricia mine. Results were received for the final 13 holes during the quarter.

While the results derived from the primary structure confirm the Golden Patricia geological style, it is the results of the remaining 3 holes which targeted the **secondary and tertiary structures** at Dorothy and Dobie (only 3/43 holes) which are generating the most interest and will form the basis for the 2023 programme.

The results of those holes indicate the secondary and tertiary structures remain open at depth and along strike, with over 30km of untested ground and include the following assay results:

- DR22-01      30.65m @ 1.57 g/t Au from 31.85m (Dorothy - ASX 17 Aug 2022)
- DR22-02      38.48m @ 0.97 g/t Au from 50.52m (Dorothy - ASX 26 Sept 2022)
- DB22-01      26.51m @ 2.1g/t Au from 77.8m (Dobie – ASX 26 Sept 2022)

<sup>2</sup> \* Source S&P Global Market Intelligence 2023



## Structural Workshop

As part of the review of the 2022 drill results, Ardiden conducted a structural workshop to update the Company's structural model with all results from the 2022 Western Hub programme. The Company, led by Exploration Manager (Haydn Daxter), engaged with industry experts from Geointerp (Leigh Rankin), Southern Geoscience (Anne Tomlinson), and Optiro-Snowden (Christine Standing) to update the Western Hub geological model.

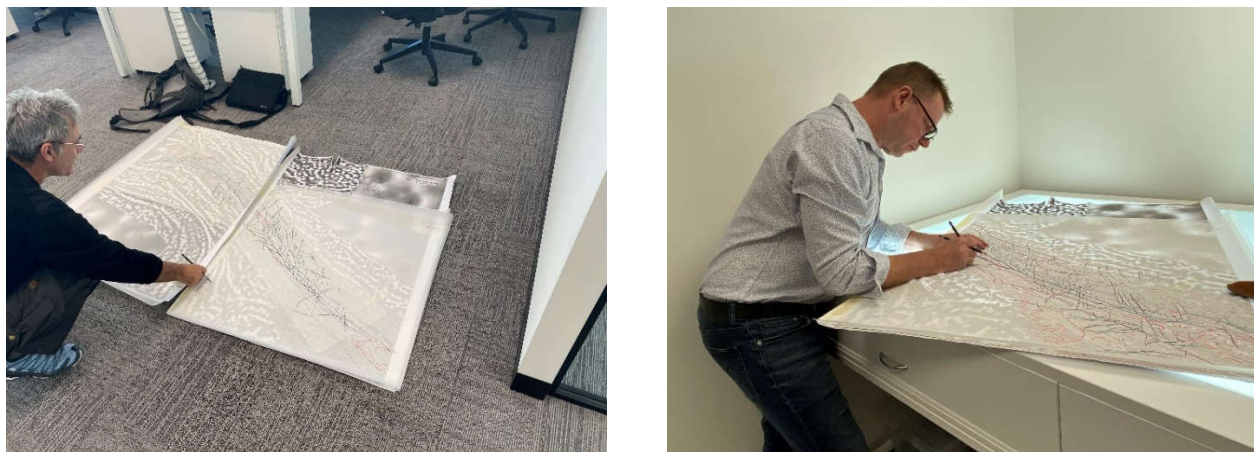


Figure 3 – Structural Specialist Leigh Rankin and Ardiden's Exploration Manager Haydn Daxter (L to R) reviewing the geological model.

The aim of the structural review was how to best target the broad mineralisation zones of the **secondary and tertiary structures** at the Company's Dorothy and Dobie Prospects. Both historical results and results from the 2022 programme have confirmed the presence of a large mineralisation halo at both Dorothy and Dobie. This halo is consistent with a massive sulphide zone, consistent with a hydrothermal flooding event (Figure 4). Modelling of the drill data from both prospects has confirmed a broad low grade gold mineralisation halo, with a semi-massive to massive sulphide lens within this mineralisation zone. High grade gold inflections displayed an affinity to the northern region of the sulphide lens as the Company continues to understand this mineralisation event at both prospects.

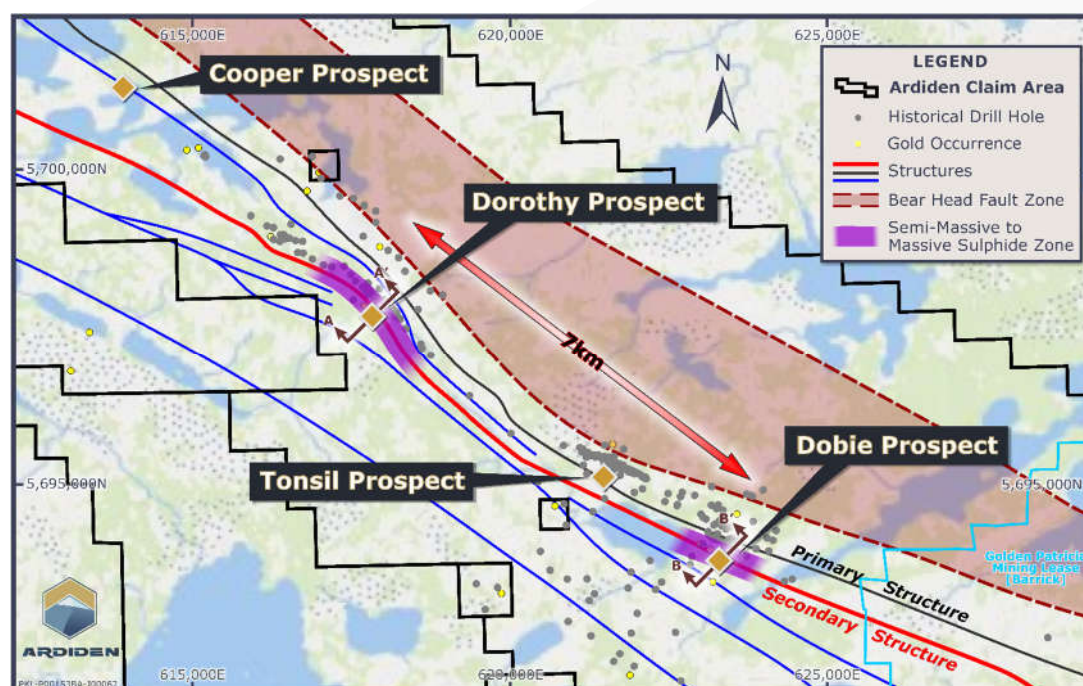


Figure 4 – Zones of semi-massive to massive sulphides at Ardiden's structurally complex Western Hub, Pickle Lake Gold Project.

## Results received during the quarter ( targeting primary structure)

### Tonsil Prospect

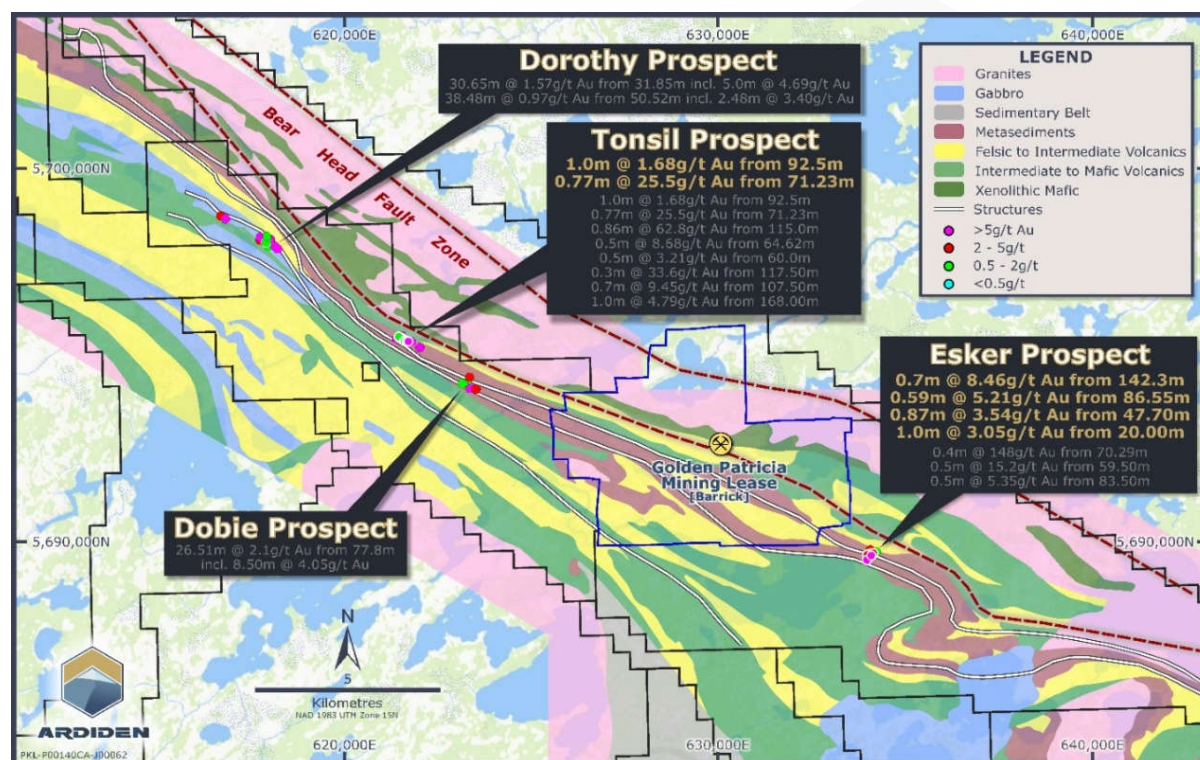
Drilling at the Tonsil Prospect focused on the Golden Patricia style vein structure that is characterised by shallow high-grade mineralisation. The final results continued to successfully demonstrate the vein structure's continuity along strike within the **primary structure** (Figure 5 – Map showing recent drilling intersections across the Western Hub of Ardiden's Pickle Lake Gold Project. Details of results are coloured in gold in this quarterly report. Please refer to ASX release dated 9 June, 17 August, 29 September, and 26 October 2022 for further details on historical exploration results. Figure 5 Error! Reference source not found.). Significant intersections include:

- DD22-16 : 0.77m @ 25.5 g/t Au from 71.23m
- DD22-16 : 1.85m @ 1.92 g/t Au from 25.15m
- DD22-15 : 1.00m @ 1.68 g/t from 92.50m

### Esker Prospect

As with Tonsil, the Esker Prospect targets were designed to test the primary structure and were generated from both historical drilling and Ardiden's current geological model. The final assay results from drilling confirm the Golden Patricia style mineralisation within the **primary structure** across a 20km strike length with shallow, high-grade intersections as shown below:

- WP22-07 : 0.70m @ 8.46 g/t Au from 142.30m
- WP22-12 : 0.59m @ 5.21 g/t Au from 86.55m
- WP22-07 : 0.87m @ 3.54 g/t Au from 47.40m
- WP22-08 : 1.0m @ 3.05 g/t Au from 21.00m
- WP22-10A : 1.0m @ 1.59 g/t Au from 27.63m



**Figure 5 – Map showing recent drilling intersections across the Western Hub of Ardiden's Pickle Lake Gold Project. Details of results are coloured in gold in this quarterly report. Please refer to ASX release dated 9 June, 17 August, 29 September, and 26 October 2022 for further details on historical exploration results.**



## 2023 Exploration Programme

Targeting has commenced on these anomalous broad zones following the structural workshop to review the recent and historical drilling. Historically the Company has noted several drill logs at both the Dorothy and Dobie prospects that display similar lithologies and continuity with semi massive to massive sulphides occurring in these structurally complex zones.

All historical work conducted at the Dorothy and Dobie prospects appears to have been targeting high grade and narrow mineralisation styles with selective sampling. Understanding these lower grade, broad mineralisation zones at Dorothy (Figure 6) and Dobie (Figure 7) prospects is the key focus for the Company in 2023.

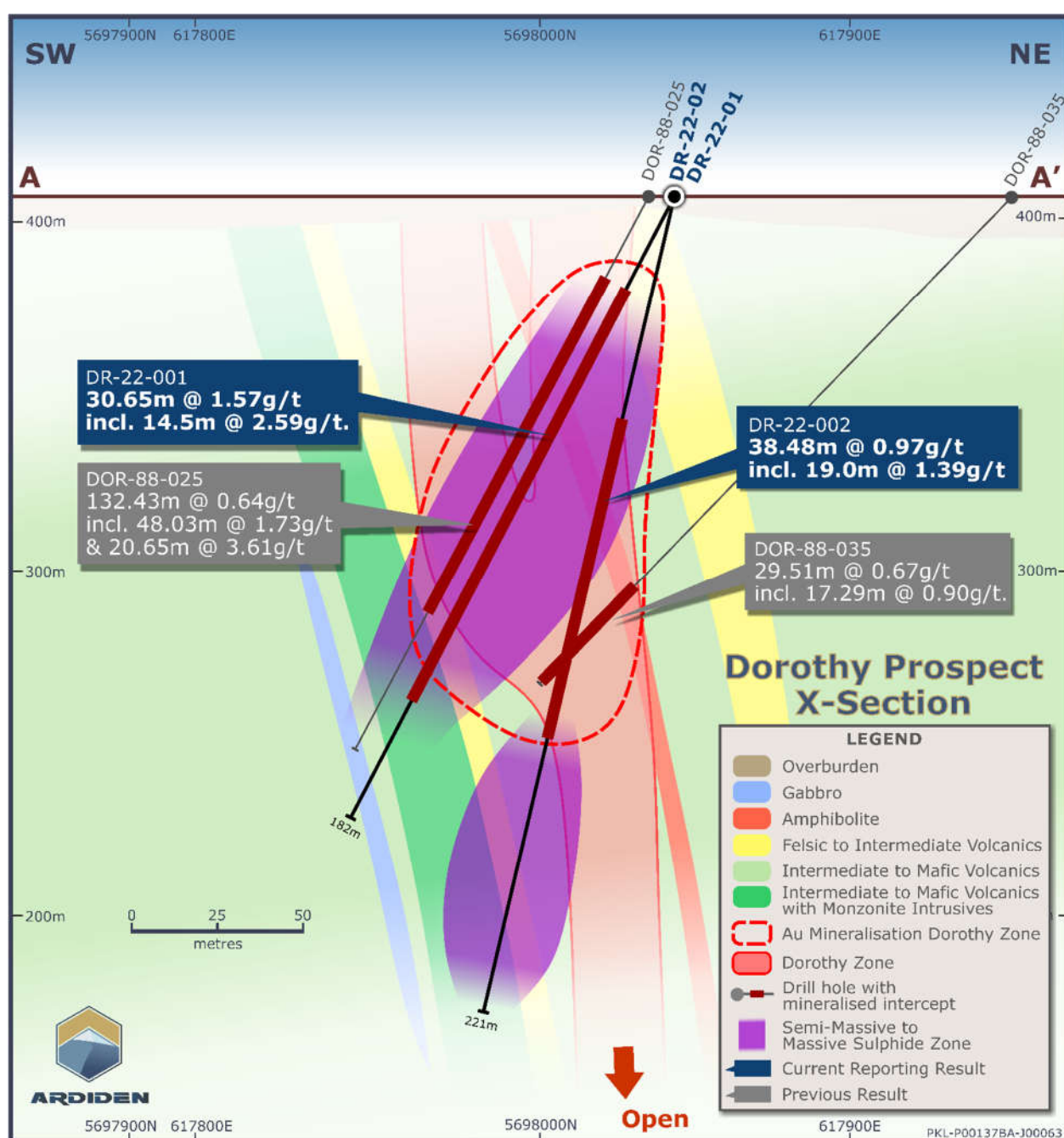
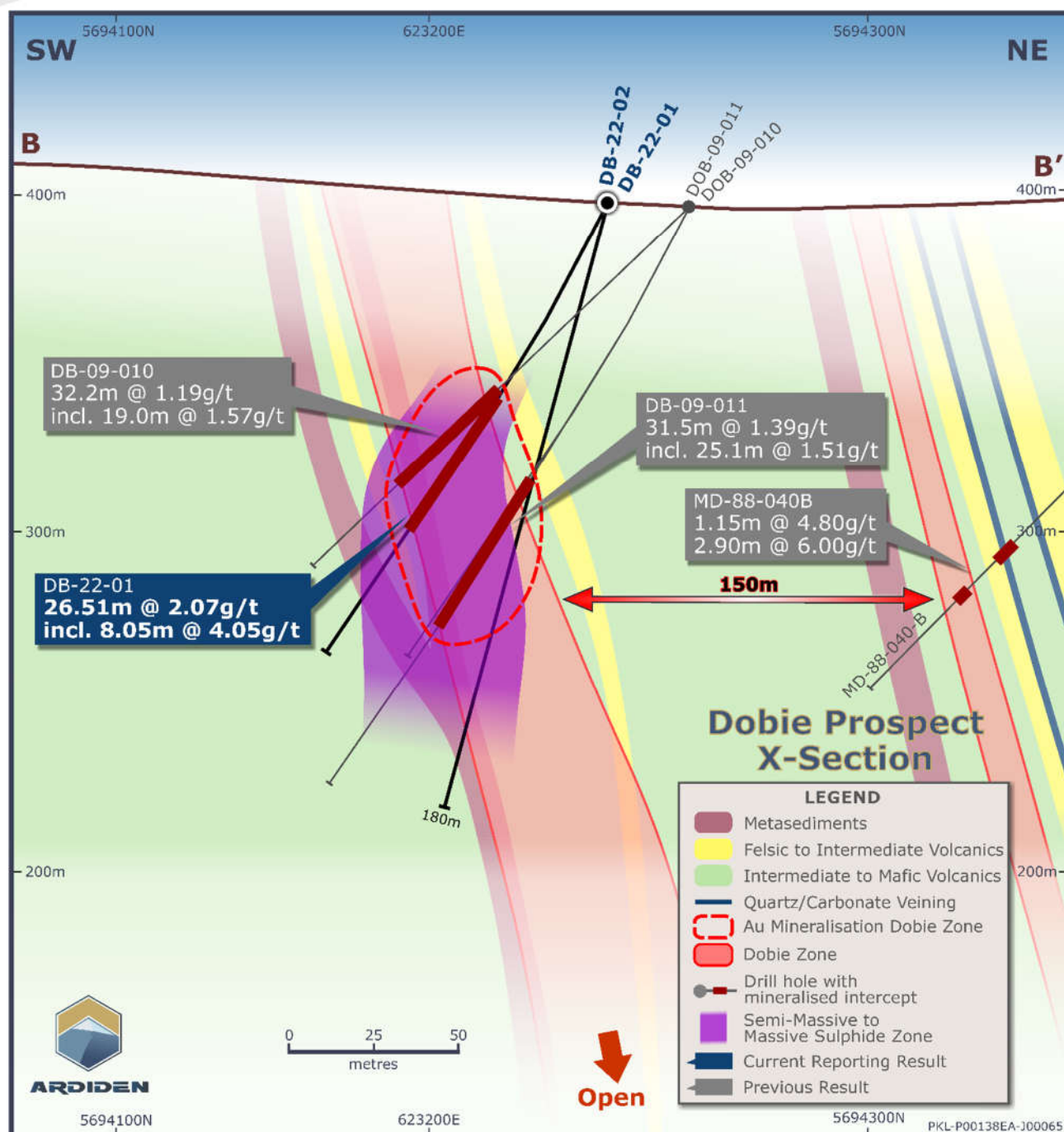


Figure 6 – Cross section at Ardiden's Dorothy prospect highlighting the relevance to broad sulphide and gold mineralisation from historical and recent drilling. Refer to ADV ASX release 18 Feb 2020, 17 Aug 2022, and 15 Dec 2022.



**Figure 7 – Cross section at Ardiden's Dobie prospect highlighting the relevance to broad sulphide and gold mineralisation from historical and recent drilling. Refer to ADV ASX release 18 Feb 2020, 17 Aug 2022, and 15 Dec 2022.**

Ardiden's Exploration Manager Haydn Daxter said: "Having conducted a detailed review with some of the industry's leading authorities on structurally complex and controlled mineralisation deposits has really highlighted the potential of the Western Hub for the Company".

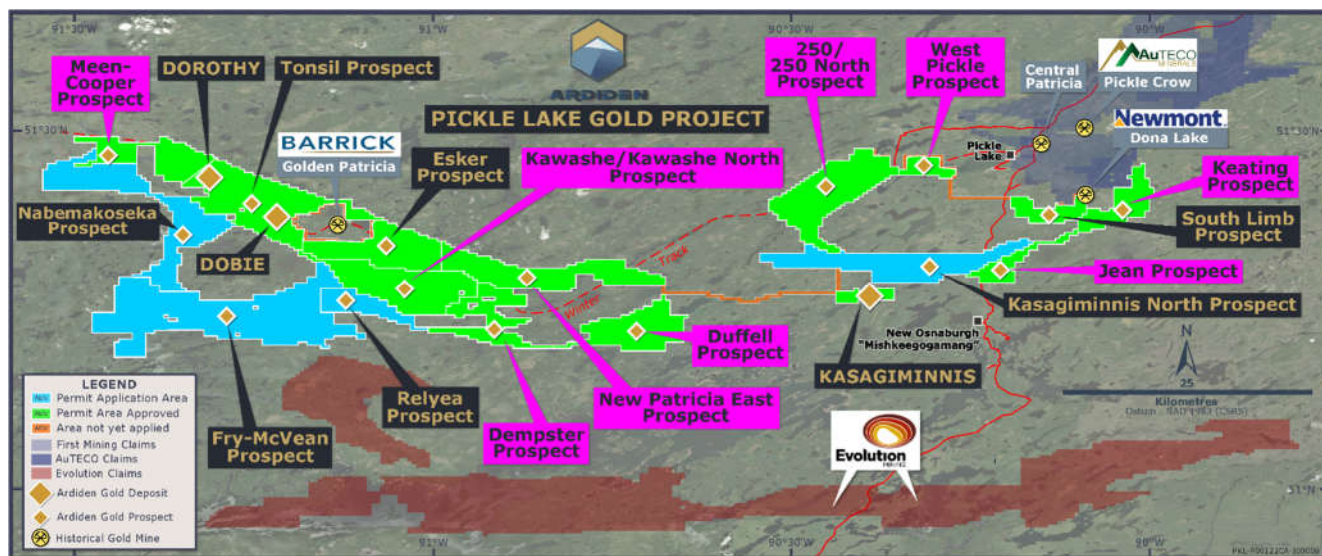
"Understanding a mineralised zone of over 130m thick that grades at 0.64 g/t Au with some missing results due to selective sampling by previous companies is fundamental for our 2023 exploration programme. These broad zones could grade above the current value due to the selective nature and offers the Company a region with significant potential to unlock a large, low-grade system".



## Permitting

The Company received one additional early exploration permit at the Kawashe/Kawashe North Prospects during the period. In addition to receiving this permit the Company submitted the remaining four early exploration permits that have been placed into circulation by the Mines Department, Ontario (Figure 8).

Upon receipt of the remaining four permits, expected in early 2023, Ardiden shall obtain a position of having 100% of its Pickle Lake Gold Project fully permitted for early exploration activities.



**Figure 8 – Status of Permitting at the District-Scale Pickle Lake Gold project- Purple callout text boxes denote the 2022 received Exploration Permit areas. Green permit areas- fully approved, blue-in process with the Mines Department, Ontario.**

## First Nations – ESG

The Company conducted its first visit to the Cat Lake community to meet with the Band Council members and Economic Development Manager. Planned visits to the community had been delayed as a result of Covid 19 protocols for the remote community and evacuation of the community due to bush fires. Discussions focused on the Company's exploration programmes for 2023, use of the winter road into the region, and community projects that both parties will continue to develop (Figure 9).

The Company also discussed and aims to finalise a Memorandum of Understanding between Ardiden Limited and the Cat Lake community that benefits all stakeholders.







*Figure 9 – Ardiden meeting with delegates from the Cat Lake community at the council offices and visit of the community (L to R).*

The Company also visited the Mishkeegogamang community to provide a project update and plans for 2023 to Chief David Masakeyash with exploration and community projects. In addition, Ardiden Chair (Bruce McFadzean) and Chief David met virtually to solidify the relationship and affirm Ardiden's commitment to the area.

Ardiden conducted its annual Christmas contribution to each First Nation community with a donation of Christmas Turkeys for Cat Lake, Mishkeegogamang and Slate Falls communities.

## **CORPORATE**

The Company had a strong cash balance at 31 December 2022 of **A\$8.35 million**. A further A\$8 million remains in trust, subject to Canadian withholding tax. Ardiden expects the majority of the residual A\$8M to be remitted back to the Company following the filing of its tax return and receipt of a tax clearance certificate from Canada Revenue in the second half of the financial year.

Cash outflows for the quarter totalled A\$1.09m which substantially consisted of exploration activity and related capital of \$400k, staff costs \$243k, and corporate administration of \$494k which includes fees paid for advisory on the sale of the lithium joint venture. These outflows were offset by the inflow of A\$7.8m, the majority of which relates to the disposal of the 20% lithium joint venture to GT1 during the quarter.

Payments to related parties and their associates (totalled \$62k consisting of Non-executive Directors fees including salaries, and superannuation payments).

The detail of the cash receipts and payments is set out in Appendix 5B.

The Company is continuing its search for a Chief Executive and has engaged with a North American recruitment specialist. The Company's day-to-day operations continue to be led by both experienced Exploration Manager, Haydn Daxter, and CFO, Tara Robson, with additional support from the board on daily operational matters.

This information is authorised for ASX release by the Board.

ENDS

For further information:

**Investors:**

Bruce McFadzean  
Non-Executive Chairman  
Tel: +61 8 6184 5938  
[info@ardiden.com.au](mailto:info@ardiden.com.au)

**Media:**

David Tasker  
Chapter One Advisors  
Tel +61 (0) 433 112 936  
[dtasker@chapteroneadvisors.com.au](mailto:dtasker@chapteroneadvisors.com.au)

For more information including modelling parameters and details, the ASX announcements pertaining to Exploration Results and Mineral Resources are available from the Company's website: [www.ardiden.com.au](http://www.ardiden.com.au)

**Competent Person's Statement**

The Company confirms that it is not aware of any other new information or data that materially affects the information included in the original market announcements referred to above, and in the case of estimates of mineral resources, that all material assumptions and technical parameters underpinning the estimates in the relevant market announcement continue to apply and have not materially changed. The Company confirms that the form and context in which the Competent Person's findings are presented have not been materially modified from the original market announcements.

**Forward Looking Statement**

This announcement may contain some references to forecasts, estimates, assumptions and other forward-looking statements. Although the company believes that its expectations, estimates and forecast outcomes are based on reasonable assumptions, it can give no assurance that they will be achieved. They may be affected by a variety of variables and changes in underlying assumptions that are subject to risk factors associated with the nature of the business, which could cause actual results to differ materially from those expressed herein. All references to dollars (\$) and cents in this presentation are to Australian currency, unless otherwise stated. Investors should make and rely upon their own enquires and assessments before deciding to acquire or deal in the Company's securities.

**About Ardiden**

*Ardiden is focused on systematic gold exploration at its Pickle Lake Gold Project in the well-endowed Uchi Geological Subprovince of north-west Ontario, Canada. The Company's 1,088km<sup>2</sup> (108,800 hectare) District-Scale Gold Project is the largest continuous gold land holding in the Uchi Belt, where Barrick, Newmont Kinross and Evolution all hold significant gold mine and exploration assets. Ardiden's strategic landholding is situated on the same geological belt as Red Lake, the 'Uchi' Subprovince, which has produced over 30M oz of gold to date and where new Tier-1 gold discoveries are still being made, such as Great Bear Resources' Dixie Project, which is now under new ownership following the successful CAD\$1.6 billion acquisition by Kinross. In addition to its Pickle Lake Gold Project, Ardiden has retained ~13 million shares in Green Technology Metals (ASX:GT1) which it acquired as part proceeds from the sale of Ardiden's lithium assets. The shares currently valued at ~\$12.5.7M<sup>3</sup>.*

---

<sup>3</sup> As at closing price (\$0.965) of GT1 on 27 January 2023.



# QUARTERLY TENEMENT SUMMARY

## 1. The mining tenements held at the end of the quarter and their location.

Gold Projects	Tenement Number/Claim ID	Status	Location	Beneficial Percentage Interest
Pickle Lake - Connections	536230, 536231, 536232, 536233, 536234, 536235, 536236, 536237, 536238, 536239, 536240, 536241, 536242, 536243, 536244, 536245, 536246, 536247, 536248, 536249, 541336, 541337, 541341, 541344, 541345, 541346, 541350, 541355, 541358, 541359, 541360, 541361, 541366, 541367, 541368, 541369, 541370, 541371, 541372, 541373, 541374, 541375, 541376, 541377, 541378, 541379, 541380, 541381, 541382, 541383, 541384, 541385, 541386, 541387, 541388, 541389, 541390, 541391, 541392, 541393, 541393, 541394, 541395, 541396, 541397, 541398, 541399, 541400, 541401, 566571, 566572, 566573, 566574, 566575, 566576, 566577, 566578, 566579, 566580, 566581, 566582, 566583, 566584, 566585, 566586, 566587, 566588, 566589, 566590, 566591, 566592, 566593, 566594, 566595, 566596, 566597, 566598, 566599, 566600, 566601, 566602, 566603, 566604, 566605, 566606, 566607, 566608, 566609, 566610, 566611, 566612, 566613, 566614, 566615, 566616, 566617.	Granted	Ontario, Canada	100%
Pickle Lake – Dempster Lake	579770, 579771, 579772, 579773, 579774, 579997, 579998, 580004, 580005, 580006, 580007, 580008, 580009, 580010, 580015, 580016, 580017, 580018, 580019, 580020, 580021, 580022, 580023, 580024, 580025, 580026, 580027, 580028, 580029, 580030, 580031, 580032, 580033, 580034, 580035, 580036, 580037, 580038, 580039, 580040, 580041, 580042, 580043, 580044, 580045, 580046, 580047, 580048, 580049, 580050, 580051, 580052, 580053, 580054, 580055, 580056, 580057, 580058, 580059, 580060, 580061, 580062, 580063, 580064, 580065, 580066, 580067, 580068, 580069, 580070, 580071, 580072, 580073, 580074, 580075, 580076, 580077, 580078, 580079, 580080, 580081, 580082, 580083, 580084, 580085, 580086, 580087, 580088, 580089, 580090, 580091, 580092, 580093, 580094, 580095, 580096, 580097, 580098, 580099, 580100, 580101, 580102, 580103, 580104, 580105, 580106, 580107, 580108, 580109, 580110, 580111, 580112, 580113, 580114, 580115, 580116, 580117, 580118, 580119, 580120, 580121, 580122, 580123, 580124, 580125, 580126, 580127, 580128, 580129, 580130, 580131, 580132, 580133, 580134, 580135, 580136, 580137, 580138, 580139, 580140, 580141, 580142, 580151, 580152, 580153, 580154, 580155, 580156, 580189, 580190,	Granted	Ontario, Canada	100%

Gold Projects	Tenement Number/Claim ID	Status	Location	Beneficial Percentage Interest
	580295, 580296, 580297, 580298, 580299, 580300, 580301, 580302, 580303, 580304, 580305, 580306, 580307, 580308, 580309, 580310, 580311, 580312, 580313, 580314, 580315, 580316, 580317, 580318, 580319, 580320, 580321, 580322, 580323, 580324, 580325, 580326, 580327, 580328, 580329, 580330, 580331, 580332, 580333, 580334, 580335, 580336, 580337, 580338, 580339, 580340, 580341, 580342, 580343, 580344, 695376, 704865, 704866, 704867, 704868, 704869, 704870, 704871, 704872, 704873, 704874, 704875, 704876, 704877, 704878, 704879, 704880, 704881, 704882, 704883, 704884, 704885, 704886, 704887, 704888, 704889, 704890, 704891, 704893.			
Pickle Lake – Dorothy Dobie	104984, 105912, 106176, 106277, 106701, 108546, 108547, 110665, 112086, 112889, 112990, 123364, 124723, 128625, 129964, 130012, 130849, 130944, 130945, 131221, 133040, 133429, 134232, 134448, 134753, 135762, 136226, 140102, 140103, 140104, 141205, 143008, 143009, 145694, 146037, 146857, 146858, 147714, 149493, 149494, 150199, 150524, 150822, 150823, 154016, 154661, 155274, 156088, 157127, 159811, 161295, 161344, 161961, 162581, 162582, 163914, 163956, 166547, 166548, 168691, 169333, 169948, 176602, 176661, 176770, 176793, 176991, 178279, 178630, 178776, 181433, 181634, 183363, 183657, 183658, 183659, 183660, 183661, 183802, 186059, 186838, 186839, 186840, 187792, 187793, 192633, 193812, 195459, 195771, 196502, 200893, 201767, 205183, 205184, 205185, 207317, 207318, 208735, 208736, 209087, 212985, 213019, 213020, 214000, 214531, 215430, 215446, 215505, 217414, 221873, 223180, 223229, 225203, 231209, 231210, 231211, 233344, 234028, 234647, 235998, 236504, 236505, 236506, 236858, 237737, 237738, 242025, 242026, 242027, 242865, 242885, 245369, 246370, 246778, 248523, 250184, 250376, 250377, 250729, 250918, 250919, 250920, 251226, 251227, 252855, 253832, 253833, 253834, 254138, 254139, 254140, 255485, 255486, 257815, 257816, 261457, 261968, 262541, 265913, 265914, 269312, 269419, 272648, 273934, 273935, 274481, 277187, 279407, 279431, 279432, 282045, 282178, 282650, 284007, 287953, 287954, 289318, 290701, 292076, 292077, 292078, 297909, 297946, 298040, 299720, 299721, 300389, 301466, 302098, 302509, 302510, 303780, 308300, 308702, 308703, 308704, 310059, 310268, 310973, 311804, 316960, 316961, 316984, 316985,	Granted	Ontario, Canada	100%



Gold Projects	Tenement Number/Claim ID	Status	Location	Beneficial Percentage Interest
	317711, 319530, 319856, 322018, 323277, 323278, 323279, 329251, 329351, 332358, 333405, 334448, 336319, 336320, 337656, 337657, 337827, 337828, 338360, 340200, 340994, 342957, 343786, 343787, 343788, 566618, 566619, 566620, 566621, 566622, 566623, 566624, 566625, 566626, 566627, 566628, 566629, 566630, 566631, 566632, 566633, 566634, 566635, 566636, 566637, 566638, 566639, 566640, 566641, 566642, 566643, 566644, 566645, 566646, 566647, 566648, 566649, 566650, 566651, 566652, 566653, 566654, 566655, 566656, 566657, 566658, 566659, 566660, 566661, 566662, 566663, 566664, 566935, 566936, 566937, 566938, 566939, 566940, 566941, 566942, 566943, 566944, 566945, 566946, 566947, 566948, 566949, 566950, 566951, 566952, 566953, 566954, 566955, 566956, 566957, 566958, 566959, 566960, 566961, 566962, 566963, 566964, 566965, 566966, 566967, 566968, 566969, 566970, 566971, 566972, 566973, 566974, 566975, 566976, 566977, 566978, 566979, 566980, 566981, 566982, 566983, 566984.			
Pickle Lake – Dorothy Dobie North	613951, 613952, 613953, 613954, 613955, 613956, 613957, 613958, 613959, 613960, 613961, 613962, 613963, 613964, 613965, 613966, 613967, 613968, 613969, 613970, 613971, 613972, 613973, 613974, 613975, 613976, 613977, 613978, 613979, 613980, 613981, 613982, 613983, 613984, 613985, 613986, 613987, 613988, 613989, 613990, 613991, 613992, 613993, 613994, 613995, 613996, 613997, 613998, 613999, 614000, 614001, 614002, 614003, 614004, 614005, 614006, 614007, 614008, 614009, 614010, 614011, 614012, 614013, 614014, 614015, 614016, 614017, 614018, 614019, 614020, 614021, 614022, 614023, 614024, 614025, 614026, 614027, 614028, 614029, 614030, 614031, 614032, 614033, 614034, 614035, 614036, 614037, 614038, 614039, 614040, 614041, 614042, 614043, 614044, 614045, 614046, 614047, 614048, 614049, 614050, 614051, 614052, 614053, 614054, 614055, 614056, 614057, 614058, 614059, 614060, 614061, 614062, 614063, 614064, 614065, 614066, 614067, 614068, 614069, 614070, 614071, 614072, 614073, 614074, 614075, 614076, 614077, 614078, 614079, 614080, 614081, 614082, 614083, 614084, 614085, 614086, 614087, 614088, 614089, 614090, 614091, 614092, 614093, 614094, 614095, 614096, 614097, 614098, 614099, 614100, 614101, 614102, 614103, 614104, 614105, 614106, 614107, 614108, 614109, 614110, 614111, 614112,	Granted	Ontario, Canada	100%

Gold Projects	Tenement Number/Claim ID	Status	Location	Beneficial Percentage Interest
	614113, 614114, 614115, 614116, 614117, 614118, 614119, 614120, 614121, 614122, 614123, 614124, 614125, 614126, 614127, 614128, 614129, 614130, 614131, 614132, 614133, 614134, 614135, 614136, 614137, 614138, 614139, 614140, 614141, 614142, 614143, 614144, 614145, 614146, 614147, 614148, 614149, 614150, 614151, 614152, 614153, 614154, 614155, 614156, 614157, 614158, 614159, 614160, 614161, 614162, 614163, 614164, 614165, 614166, 614167, 614168, 614169, 614170, 614171, 614172, 614173, 614174, 614175, 614176, 614177, 614178, 614179, 614180, 614181, 614182, 614183, 614184, 614185, 614186, 614187, 614188, 614189, 614190, 614191, 614192, 614193, 614194, 614195, 614196, 614197, 614198, 614199, 614200, 614201, 614202, 614203, 614204, 614205, 614206, 614207, 614208, 614209, 614210, 614211, 614212, 614213, 614214, 614215, 614216, 614217, 614218, 614219, 614220, 614221, 614222, 614223, 614224, 614225, 614226, 614227, 614228, 614229, 614230, 614231, 614232, 695374.			
Pickle Lake – Duffell Lake	579696, 579697, 579698, 579699, 579700, 579701, 579702, 579703, 579704, 579705, 579706, 579707, 579708, 579709, 579710, 579711, 579712, 579713, 579714, 579715, 579716, 579717, 579718, 579719, 579720, 579721, 579722, 579723, 579724, 579725, 579726, 579727, 579728, 579729, 579730, 579731, 579732, 579733, 579734, 579735, 579736, 579737, 579738, 579739, 579740, 579741, 579742, 579743, 579744, 579745, 579746, 579747, 579748, 579749, 579750, 579751, 579752, 579753, 579754, 579755, 579756, 579757, 579758, 579759, 579760, 579761, 579762, 579763, 579764, 579765, 579766, 579767, 579768, 579769, 579993, 579994, 579995, 579996, 579999, 580000, 580001, 580002, 580003, 580011, 580012, 580013, 580014, 695351, 695352.	Granted	Ontario, Canada	100%
Pickle Lake – Fry-McVean	581408, 581409, 581410, 581411, 581412, 581413, 581414, 581415, 581416, 581417, 581418, 581419, 581420, 581421, 581422, 581423, 581424, 581425, 581426, 581427, 581428, 581429, 581430, 581431, 581432, 581433, 581434, 581435, 581436, 581437, 581438, 581439, 581440, 581441, 581442, 581443, 581444, 581445, 581446, 581447, 581448, 581449, 581450, 581451, 581452, 581453, 581454, 581455, 581456, 581457, 581458, 581459, 581460, 581461, 581462, 581463, 581464, 581465, 581466, 581467, 581468, 581469, 581470, 581471, 581472, 581473, 581474, 581475, 581476, 581477, 581478, 581479,	Granted	Ontario, Canada	100%



Gold Projects	Tenement Number/Claim ID	Status	Location	Beneficial Percentage Interest
	581480, 581481, 581482, 581483, 581484, 581485, 581486, 581487, 581488, 581489, 581490, 581491, 581492, 581493, 581494, 581495, 581496, 581497, 581498, 581499, 581500, 581501, 581502, 581503, 581504, 581505, 581506, 581507, 581508, 581509, 581510, 581511, 581512, 581513, 581514, 581515, 581516, 581517, 581518, 581519, 581520, 581521, 581522, 581523, 581524, 581525, 581526, 581527, 581528, 581529, 581530, 581531, 581532, 581533, 581534, 581535, 581536, 581537, 581538, 581539, 581540, 581541, 581542, 581543, 581544, 581545, 581546, 581547, 581548, 581549, 581550, 581551, 581552, 581553, 581554, 581555, 581556, 581557, 581558, 581559, 581560, 581561, 581562, 581563, 581564, 581565, 581566, 581567, 581568, 581569, 581570, 581571, 581572, 581573, 581574, 581575, 581576, 581577, 581578, 581579, 581580, 581581, 581582, 581583, 581584, 581585, 581586, 581587, 581588, 581589, 581590, 581591, 581592, 581593, 581594, 581595, 581596, 581597, 581598, 581599, 581600, 581601, 581602, 581603, 581604, 581605, 581606, 581607, 581608, 581609, 581610, 581611, 581612, 581613, 581614, 581615, 581616, 581617, 581618, 581619, 581620, 581621, 581622, 581623, 581624, 581625, 581626, 581627, 581628, 581629, 581630, 581631, 581632, 581633, 581634, 581635, 581636, 581637, 581638, 581639, 581640, 581641, 581642, 581643, 581644, 581645, 581646, 581647, 581648, 581649, 581650, 581651, 581652, 581653, 581654, 581655, 581656, 581657, 581658, 581659, 581660, 581661, 581662, 581663, 581664, 581665, 581666, 581667, 581668, 581669, 581670, 581671, 581672, 581673, 581674, 581675, 581676, 581677, 581678, 581679, 581680, 581681, 581682, 581683, 581684, 581685, 581686, 581687, 581688, 581689, 581690, 581691, 581692, 581693, 581694, 581695, 581696, 581697, 581698, 581699, 581700, 581701, 581702, 581703, 581704, 581705, 581706, 581707, 581726, 581727, 581728, 581729, 581730, 581731, 581732, 581733, 581734, 581735, 581736, 581737, 581738, 581739, 581740, 581741, 581742, 581743, 581744, 581745, 581746, 581747, 581748, 581749, 581750, 581751, 581752, 581753, 581754, 581755, 581756, 581757, 581758, 581759, 581760, 581761, 581762, 581763, 581764, 581765, 581766, 581767, 581768, 581769, 581770, 581771, 581772, 581773, 581774, 581775, 581779, 581780, 581781, 581782, 581783, 581784, 581785, 581786, 581787, 581788,			

Gold Projects	Tenement Number/Claim ID	Status	Location	Beneficial Percentage Interest
	581789, 581790, 581791, 581792, 581793, 581794, 581795, 581796, 581797, 581798, 581799, 581800, 581801, 581802, 581803, 581804, 581805, 581806, 581807, 581808, 581809, 581810, 581811, 581812, 581813, 581814, 581815, 581816, 581817, 581818, 581819, 581820, 581821, 581822, 581823, 581824, 581825, 581826, 581827, 581828, 581830, 581831, 581832, 581833, 581834, 581835, 581836, 581837, 581838, 581839, 581840, 581841, 581842, 581843, 581844, 581845, 581846, 581847, 581848, 581849, 581850, 581851, 581852, 581853, 581854, 581855, 581856, 581857, 581858, 581859, 581860, 581861, 581862, 581863, 581864, 581865, 581866, 581867, 581868, 581869, 581870, 581871, 581872, 581873, 581874, 581875, 581876, 581877, 581878, 581879, 581880, 581881, 581882, 581883, 581884, 581885, 581886, 581887, 581888, 581889, 581890, 581891, 581892, 581893, 581894, 581895, 581896, 581897, 581898, 581899, 581900, 581901, 581902, 581903, 581904, 581905, 581906, 581907, 581908, 581909, 581910, 581911, 581912, 581913, 581914, 581915, 581916, 581917, 581918, 581919, 581920, 581921, 581922, 581923, 581924, 581925, 581926, 581927, 581928, 581929, 581930, 581931, 581932, 581933, 581934, 581935, 581936, 581937, 581938, 581939, 581940, 581941, 581942, 581943, 581944, 581945, 581946, 581947, 581948, 581949, 581950, 581951, 581952, 581953, 581954, 581955, 581956, 581957, 581958, 581959, 581960, 581961, 581962, 581963, 581964, 581965, 581966, 581967, 581968, 581969, 581970, 581971, 581972, 581973, 581974, 581975, 581976, 581977, 581978, 581979, 581981, 581982, 581983, 581984, 581985, 581986, 581987, 581988, 581989, 581990, 581991, 581992, 581993, 581994, 581995, 581996, 581997, 581998, 581999, 582000, 582001, 582002, 582003, 582004, 582005, 582006, 582007, 582008, 582009, 582010, 582011, 582012, 582013, 582014, 582015, 582016, 582017, 582018, 582019, 582020, 582021, 582022, 582023, 582024, 582025, 582026, 582027, 582028, 582029, 582030, 582031, 582032, 582033, 582034, 582035, 582036, 582037, 582038, 582039, 582040, 582041, 582042, 582043, 582044, 582045, 582046, 582047, 582048, 582049, 582050, 582051, 582052, 582053, 582054, 582055, 582056, 582057, 582058, 582059, 582060, 582061, 582062, 582063, 582064, 582065, 582066, 582067, 582068, 582069, 582070, 582071, 582072, 582073, 582074, 582075, 582076, 582077, 582078,			



Gold Projects	Tenement Number/Claim ID	Status	Location	Beneficial Percentage Interest
	582079, 582080, 582081, 582082, 582083, 582084, 582085, 582086, 582087, 582088, 582089, 582090, 582091, 582092, 582093, 582094, 582095, 582096, 582097, 582098, 582099, 582100, 582101, 582102, 582103, 582104, 582105, 582106, 582107, 582108, 582109, 582110, 582111, 582112, 582113, 582114, 582115, 582116, 582117, 582118, 582119, 582120, 582121, 582122, 582123, 582124, 582125, 582126, 582127, 582128, 582129, 582130, 582131, 582132, 582133, 582134, 582135, 582136, 582137, 582138, 582139, 582140, 582141, 582142, 582143, 582144, 582145, 582146, 582147, 582148, 582149, 582150, 582151, 582152, 582153, 582154, 582155, 582156, 582157, 582158, 582159, 582160, 582161, 582162, 582163, 582164, 582165, 582166, 582167, 582168, 582169, 582170, 582171, 582172, 582173, 582174, 582175, 582176, 582177, 582178, 582179, 582180, 582181, 582182, 582183, 582184, 582185, 582186, 582187, 582188, 582189, 582190, 582191, 582192, 582193, 582194, 582195, 582196, 582197, 582198, 582199, 582200, 582201, 582202, 582203, 582204, 582205, 582206, 582207, 582208, 582209, 582210, 582211, 582212, 582213, 582214, 582215, 582216, 582217, 582218, 582219, 582220, 582221, 582222, 582223, 582224, 582225, 582226, 582227, 582228, 582229, 582230, 582231, 582232, 695231, 695232, 695233, 695234, 695235, 695236, 695237, 695238, 695239, 695240, 695241, 695242, 695243, 695244, 695245, 695246, 695247, 695248, 695249, 695250, 695251, 695252, 695253, 695254, 695255, 695256, 695257, 695258, 695259, 695260, 695261, 695262, 695263, 695264, 695265, 695266, 695267, 695268, 695269, 695270, 695271, 695272, 695273, 695274, 695275, 695276, 695277, 695278, 695279, 695280, 695281, 695282, 695283, 695284, 695285, 695286, 695287, 695288, 695289, 695290, 695291, 695292, 695293, 695294, 695295, 695296, 695297, 695298, 695299, 695300, 695301, 695302, 695303, 695304, 695305, 695306, 695307, 695308, 695309, 695310, 695311, 695312, 695313, 695314, 695315, 695316, 695317, 695318, 695319, 695320, 695321, 695322, 695323, 695324, 695325, 695367, 723858, 723859, 723860, 723861, 723862, 723863, 723864.			
Pickle Lake – Jean Lake	574692, 574693, 574694, 574695, 574696, 574697, 574698, 574699, 574700, 574701, 574702, 574703, 574704, 574705, 574706, 574707, 574708, 574709, 574710, 574711, 574712, 574713, 574714, 574715,	Granted	Ontario, Canada	100%

Gold Projects	Tenement Number/Claim ID	Status	Location	Beneficial Percentage Interest
	574716, 574717, 574718, 574719, 574720, 574721, 574730, 574734, 574735, 574736, 574737, 574738, 574739, 574740, 574741, 574792, 574793, 574794, 574795, 574796, 574797, 574798, 574799, 574800, 574801, 574802, 574803, 574804, 574805, 574806, 574807, 574808, 574809, 574810, 574811, 574812, 574813, 574814, 574815, 574816, 574817, 574818, 574819, 574820, 574821, 574822, 574823, 574824, 574825, 574826, 574827, 574828, 574829, 574830, 574831, 574832, 574833, 574834, 574835, 574836, 574837, 574838, 574839, 574840, 574841, 574864, 574865, 574866, 574867, 574868, 574869, 574870.			
Pickle Lake – Kasagiminnis	107775, 110169, 122181, 122182, 122183, 122898, 122899, 124715, 124716, 124717, 133631, 136219, 136220, 136221, 141049, 142242, 178845, 178846, 181427, 186270, 187592, 188198, 198429, 198430, 199793, 200883, 236848, 236849, 253606, 253607, 254414, 265109, 266397, 281542, 282778, 289590, 290904, 290905, 292065, 292066, 301653, 310309, 310310, 310311, 310962, 319583, 340456, 341762, 341763, 703842, 713441, 713443.	Granted	Ontario, Canada	100%
Pickle Lake – Kasagiminnis North	614233, 614234, 614235, 614236, 614237, 614238, 614239, 614240, 614241, 614242, 614243, 614244, 614245, 614246, 614247, 614248, 614249, 614250, 614251, 614252, 614253, 614254, 614255, 614256, 614257, 614258, 614259, 614260, 614261, 614262, 614263, 614264, 614265, 614266, 614267, 614268, 614269, 614270, 614271, 614272, 614273, 614274, 614275, 614276, 614277, 614278, 614279, 614280, 614281, 614282, 614283, 614284, 614285, 614286, 614287, 614288, 614289, 614290, 614291, 614292, 614293, 614294, 614295, 614296, 614297, 614298, 614299, 614300, 614301, 614302, 614303, 614304, 614305, 614306, 614307, 614308, 614309, 614310, 614311, 614312, 614313, 614314, 614315, 614316, 614317, 614318, 614319, 614320, 614321, 614322, 614323, 614324, 614325, 614326, 614327, 614328, 614329, 614330, 614331, 614332, 614333, 614334, 614335, 614336, 614337, 614338, 614339, 614340, 614341, 614342, 614343, 614344, 614345, 614346, 614347, 614348, 614349, 614350, 614351, 614352, 614353, 614354, 614355, 614356, 614357, 614358, 614359, 614360, 614361, 614362, 614363, 614364, 614365, 614366, 614367, 614368, 614369, 614370, 614371, 614372, 614373, 614374, 614375, 614376, 614377, 614378, 614379, 614380, 614381, 614382, 614383, 614384, 614385, 614386, 614387, 614388, 614389, 614390,	Granted	Ontario, Canada	100%

Gold Projects	Tenement Number/Claim ID	Status	Location	Beneficial Percentage Interest
	614391, 614392, 614393, 614394, 614395, 614396, 614397, 614398, 614399, 614400, 614401, 614402, 614403, 614404, 614405, 614406, 614407, 614408, 614409, 614410, 614411, 614412, 614413, 614414, 614415, 614416, 614417, 614418, 614419, 614420, 614421, 614422, 614423, 614424, 614425, 614426, 614427, 614428, 614429, 614430, 614431, 614432, 614433, 614434, 614435, 614436, 614437, 614438, 614439, 614440, 614441, 614442, 614443, 614444, 614445, 614446, 614447, 614448, 614449, 614450, 614451, 614452, 614453, 614454, 614455, 614456, 614457, 614458, 614459, 614460, 614461, 614462, 614463, 614464, 614465, 614466, 614467, 614468, 614469, 614470, 614471, 614472, 614473, 614474, 614475, 614476, 614477, 614478, 614479, 614480, 614481, 614482, 614483, 614484, 614485, 614486, 614487, 614488, 614489, 614490, 614491, 614492, 614493, 614494, 614495, 614496, 614497, 614498, 614499, 614500, 614501, 614502, 614503, 614504, 614505, 614506, 614507, 614508, 614509, 614510, 614511, 614512, 614513, 614514, 614515, 614516, 614517, 614518, 614519, 614520, 614521, 614522, 614523, 614524, 614525, 614526, 614527, 614528, 614529, 614530, 614531, 614532, 614533, 614534, 614535, 614536, 614537, 614538, 614539, 614540, 614541, 614542, 614543, 614544, 614545, 614546, 614547, 614548, 614549, 614550, 614551, 614552, 614553, 614554, 614555, 614556, 614557, 614558, 614559, 614560, 614561, 614562, 614563, 614564, 614565, 614566, 614567, 614568, 614569, 614570, 614571, 614572, 614573, 614574, 614575, 614576, 614577, 614578, 614579, 614580, 614581, 614582, 614583, 614584, 614585, 614586, 614587, 614588, 614589, 614590, 614591, 614592, 614593, 614594, 614595, 614596, 614597, 614598, 614599, 614600, 614601, 614602, 614603, 614604, 614605, 614606, 614607, 614608, 614609, 614610, 742484, 742485, 742486, 742487, 742488, 742489, 742490, 742491, 742492, 742493, 742493, 742494, 742495, 742496, 742497, 742498.			
Pickle Lake – Kawashe Lake	574871, 574872, 574873, 574874, 574875, 574876, 574877, 574878, 574879, 574880, 574881, 574882, 574883, 574884, 574885, 574886, 574887, 574888, 574889, 574890, 574891, 574892, 574893, 574894, 574895, 574896, 574897, 574898, 574899, 574900, 574901, 574902, 574903, 574904, 574905, 574906, 574907, 574908, 574909, 574910, 574911, 574912, 574913, 574914, 574915, 574916,	Granted	Ontario, Canada	100%



Gold Projects	Tenement Number/Claim ID	Status	Location	Beneficial Percentage Interest
	574917, 574918, 574919, 574920, 574921, 574922, 574923, 574924, 574925, 574926, 574927, 574928, 574929, 574930, 574931, 574932, 574933, 574934, 574935, 574936, 574937, 574938, 574939, 574940, 574941, 574942, 574943, 574944, 574945, 574946, 574947, 574948, 574949, 574950, 574951, 574952, 574953, 574954, 574955, 574956, 574957, 574958, 574959, 574960, 574961, 574962, 574963, 574964, 574965, 574966, 574967, 574968, 574969, 574970, 574971, 574972, 574973, 574974, 574975, 574976, 574977, 574978, 574979, 574980, 574981, 574982, 574983, 574984, 574985, 574986, 574987, 574988, 574989, 574990, 574991, 574992, 574993, 574994, 574995, 574996, 574997, 574998, 574999, 575000, 575001, 575002, 575003, 575004, 575005, 575006, 575007, 575008, 575009, 575010, 575011, 575012, 575013, 575014, 575015, 575016, 575017, 575018, 575019, 575020, 575021, 575022, 575023, 575024, 575025, 575026, 575027, 575028, 575029, 575030, 575031, 575032, 575033, 575034, 575035, 575036, 575037, 575038, 575039, 575040, 575041, 575042, 575043, 575044, 575045, 575046, 575047, 575048, 575049, 575050, 575051, 575052, 575053, 575054, 575055, 575056, 575057, 575058, 575059, 575060, 575061, 575062, 575063, 575064, 575065, 575066, 575067, 575068, 575069, 575070, 575071, 575072, 575073, 575074, 575075, 575076, 575077, 575078, 575079, 575080, 575081, 575082, 575083, 575084, 575085, 575086, 575087, 575088, 575089, 575090, 575091, 575092, 575093, 575094, 575095, 575096, 575097, 575098, 575099, 575100, 575101, 575102, 575103, 575104, 575105, 575106, 575107, 575108, 575109, 575110, 575111, 575112, 575113, 575114, 575115, 575116, 575117, 575118, 575119, 575120, 575121, 575122, 575123, 575124, 575125, 575126, 575127, 575128, 575129, 575130, 575131, 575132, 575133, 575134, 575135, 575136, 575137, 575138, 575139, 575140, 575141, 575142, 575143, 575144, 575145, 575146, 575147, 575148, 575149, 575150, 575151, 575152, 575153, 575154, 575155, 575156, 575157, 575158, 575159, 575160, 575161, 575162, 575163, 575164, 575165, 575166, 575167, 575168, 575169, 575170, 575171, 575172, 575173, 575174, 575175, 575176, 575177, 575178, 575179, 575180, 575181, 575182, 575183, 575184, 575185, 575186, 575187, 575188, 575189, 575190, 575191, 575192, 575193, 575194, 575195, 575196, 575197, 575198, 719921.			

Gold Projects	Tenement Number/Claim ID	Status	Location	Beneficial Percentage Interest
Pickle Lake – Kawashe Lake North	625482, 625483, 625484, 625485, 625486, 625487, 625488, 625489, 625490, 625491, 625492, 625493, 625494, 625495, 625496, 625497, 625498, 625499, 625500, 625502, 625503, 625504, 625505, 625506, 625507, 625508, 625509, 625510, 625511, 625512, 625513, 625514, 625515, 625516, 625517, 625518, 625519, 625520, 625521, 625522, 625523, 625524, 625525, 625526, 625527, 625528, 625529, 625530, 625531, 625532, 625533, 625534, 625535, 625536, 625537, 625538, 625539, 625540, 625541, 625542, 625543, 625544, 625545, 625546.	Granted	Ontario, Canada	100%
Pickle Lake – Keating Lake	574492, 574493, 574494, 574495, 574496, 574497, 574498, 574499, 574500, 574501, 574502, 574503, 574504, 574505, 574506, 574507, 574508, 574509, 574510, 574511, 574512, 574513, 574514, 574515, 574516, 574517, 574518, 574519, 574520, 574521, 574522, 574523, 574524, 574525, 574526, 574527, 574528, 574529, 574530, 574531, 574532, 574533, 574534, 574535, 574536, 574537, 574538, 574539, 574540, 574541, 574542, 574543, 574544, 574545, 574546, 574547, 574548, 574549, 574550, 574551, 574552, 574553, 574554, 574555, 574556, 574557, 574558, 574559, 574560, 574561, 574562, 574563, 574564, 574565, 574566, 574567, 574568, 574569, 574570, 574571, 574572, 574573, 574574, 574575, 574576, 574577, 574578, 574579, 574580, 574581, 574582, 574583, 574584, 574585, 574586, 574587, 574588, 574589, 574590, 574591, 574722, 574723, 574724, 574725, 574726, 574727, 574728, 574729, 574731, 574732, 574733, 579929, 579930, 579931, 579932, 579933, 579934, 579935, 579936, 579937, 579938, 579939, 579940, 579941, 579942, 579943, 579944, 579945, 579946, 579947, 579948, 579949, 579950, 579951, 579952, 579953, 579954, 579955, 579956, 579957, 579958, 579959, 579960, 579961, 579962, 579963, 579964, 579965, 579966, 579967, 579968, 579969, 579970, 579971, 579972, 579973, 579974, 579975, 579976, 579977, 579978.	Granted	Ontario, Canada	100%
Pickle Lake – Meen Lake	579775, 579776, 579777, 579778, 579779, 579780, 579781, 579782, 579783, 579784, 579785, 579786, 579787, 579788, 579789, 579790, 579791, 579792, 579793, 579794, 579795, 579796, 579797, 579798, 579799, 579800, 579801, 579802, 579803, 579804, 579805, 579806, 579807, 579808, 579809, 579810, 579811, 579812, 579813, 579814, 579815, 579816, 579817, 579818, 579819, 579820, 579821, 579822, 579823, 579824, 579825, 579826, 579827, 579828, 579829, 579830, 579831, 579832, 579833, 579834,	Granted	Ontario, Canada	100%

Gold Projects	Tenement Number/Claim ID	Status	Location	Beneficial Percentage Interest
	579835, 579836, 579837, 579838, 579839, 579840, 579841, 579842, 579843, 579844, 579845, 579846, 579847, 579848, 579849, 579850, 579851, 579852, 579853, 579854, 579855, 579856, 579857, 579858, 579859, 579860, 579861, 579862, 579863, 579864, 579865, 579866, 579867, 579868, 579869, 579870, 579871, 579872, 579873, 579874, 579875, 579876, 579877, 579878, 579879, 579880, 579881, 579882, 579883, 579884, 579885, 579886, 579887, 579888, 579889, 579890, 579891, 579892, 579893, 579894, 579895, 579896, 579897, 579898, 579899, 579900, 579901, 579902, 579903, 579904, 579905, 579906, 579907, 579908, 579909, 579910, 579911, 579912, 579913, 579914, 579915, 579916, 579917, 579918, 579919, 579920, 579921, 579922, 579923, 579924, 579925, 579926, 579927, 579928, 695369, 695688, 706126, 706127, 706128, 706129, 706130, 706131, 706132, 706133, 706134, 706135, 706136, 706137, 706138, 706139, 706140, 706141, 706142, 706143, 706144, 706145, 706146, 706149, 706150, 706151, 706152, 706153, 706154, 706155, 706156, 706157, 706158, 706159, 706160, 706161, 706162, 706163, 706164, 706165, 706166, 706167, 706168, 706169, 706170, 706171, 706172, 706173, 706174, 706175, 706176, 706177, 706178, 706179, 706180, 706181, 706182, 706183, 706184, 706185, 706186, 706187, 706188, 706189, 706190, 706191, 706192, 706193, 706194, 706195, 706196, 706197, 706198, 706199, 706200, 706201, 706202, 706203, 706204, 706205, 706206, 706207, 706208, 706209, 706210, 706211, 706212, 706213, 706214, 706215, 706216, 706217, 706218, 706219, 706220, 706221, 706222, 706223, 706224, 706225, 706226, 706227, 706228, 706229, 706230, 706231, 706232, 706233, 706234, 706235, 706236, 706237, 706238, 706239, 706240, 706241, 706242, 706243, 706244, 706245, 706246, 706247, 706248, 706249, 706250, 706251, 706252, 706253, 706254, 706255, 706256, 706257, 706258, 706259, 706260, 706261, 706262, 706263, 706264, 706265, 706266, 706267, 706268, 706269, 706270, 706271, 706272, 706273, 706274, 706275, 706276, 706277, 706278, 706279, 706280, 706281, 706282, 706283, 706284, 706285, 706286, 706287, 706288, 706289, 706290, 706291, 706292, 706293, 706294, 706295, 706296, 706297, 706298, 706299, 706300, 706301, 706302, 706303, 706304, 706305, 706306, 706307, 706308, 706309, 706310, 706311, 706312, 706313, 706314, 706315, 706316, 706317, 706318, 706319,			



Gold Projects	Tenement Number/Claim ID	Status	Location	Beneficial Percentage Interest
	706320, 706321, 706322, 706323, 706324, 706325, 706326, 706327, 706328, 706329, 706330, 706331, 706332, 706333, 706334, 706335, 706336, 706337, 706338, 706339, 706340, 706341, 706342, 706343, 706344, 706345, 706346, 706347, 706348.			
Pickle Lake - Nabemakoseka	704777, 704778, 704779, 704780, 704781, 704782, 704783, 704784, 704785, 704786, 704787, 704788, 704789, 704790, 704791, 704792, 704793, 704794, 704795, 704796, 704797, 704798, 704799, 704800, 704801, 704802, 704803, 704804, 704805, 704806, 704807, 704808, 704809, 704810, 704811, 704812, 704813, 704814, 704815, 704816, 704817, 704818, 704819, 704820, 704821, 704822, 704823, 704824, 704825, 704826, 704827, 704828, 704829, 704830, 704831, 704832, 704833, 704834, 704835, 704836, 704837, 704838, 704839, 704840, 704841, 704842, 704843, 704844, 704845, 704846, 704847, 704849, 704850, 704851, 704852, 704853, 704854, 704855, 704856, 704857, 704858, 704859, 704860, 704969, 704970, 704971, 704972, 704973, 704974, 704975, 704976, 704977, 704978, 704979, 704980, 704981, 704982, 704983, 704984, 704985, 704986, 704987, 904988, 704989, 704990, 704991, 704992, 704993, 704994, 704995, 704996, 704997, 704998, 704999, 705000, 705001, 705002, 705003, 705004, 705005, 705006, 705007, 705008, 705009, 705010, 705011, 705012, 705013, 705014, 705015, 705016, 705017, 705018, 705019, 705020, 705021, 705022, 705023, 705024, 705025, 705026, 705027, 705028, 705029, 705030, 705031, 705032, 705033, 705034, 705035, 705036, 705037, 705038, 705039, 705040, 705041, 705042, 705043, 705044, 705045, 705046, 705047, 705048, 705049, 705050, 705051, 705052, 705053, 705054, 705055, 705056, 705057, 705058, 705059, 705060, 705061, 705062, 705063, 705064, 705065, 705066, 705067, 705068, 705069, 705070, 705071, 705072, 705073, 705074, 705075, 705076, 705077, 705078, 705079, 705080, 705081, 705082, 705083, 705084, 705085, 705086, 705087, 705088, 705089, 705090, 705091, 705092, 705093, 705094, 705095, 705096, 705097, 705098, 705099, 705100, 705101, 705102, 705103, 705104, 705105, 705106, 705107, 705108, 705109, 705110, 705111, 705112, 705113, 705114, 705115, 705116, 705117, 705118, 706097, 706098, 706099, 706100, 706101, 706102, 706103, 706104, 706105, 706106, 706107, 706108, 706109, 706110, 706111, 706112, 706113, 706114, 706115,	Granted	Ontario, Canada	100%

Gold Projects	Tenement Number/Claim ID	Status	Location	Beneficial Percentage Interest
	706116, 706117, 706118, 706119, 706120, 706121, 706122, 706123, 706124, 706125.			
Pickle Lake – New Patricia	131784, 147867, 147868, 147869, 147870, 147871, 159805, 161958, 184465, 193806, 196500, 211821, 214522, 214523, 214524, 240460, 248516, 248517, 248518, 248519, 251221, 260527, 300387, 315009, 315010, 315011, 317709, 329913, 329914, 329915, 329916, 335930, 339299, 500919, 500920, 500921, 500922, 500923, 500924, 500925, 500926, 500927, 500928, 500929, 500930, 500931, 500932, 500933, 500934, 500935, 500936, 500937, 500938, 500939, 500940, 500941, 500942, 500943, 500944, 500945, 500946, 500947, 500948, 500949, 500950, 500951, 500952, 500953, 500954, 500955, 500956, 500957, 500958, 500959, 500960, 500961, 500962, 500963, 500964, 500965, 500966, 500967, 500968, 500969, 500970, 500971, 500972, 500973, 500974, 500975, 500976, 500977, 500978, 500979, 500980, 500981, 500982, 500983, 500984, 500985, 500986, 500987, 500988, 500989, 500990, 500991, 500992, 500993, 500994, 500995, 500996, 500997, 500998, 500999, 501000, 501001, 501002, 501003, 501004, 501005, 501006, 501007, 501008, 501009, 501010, 501011, 501012, 501013, 501014, 501015, 501016, 501017, 501018, 501142, 501143, 501144, 501145, 501146, 501147, 501148, 501149, 501150, 501151, 501152, 501153, 501154, 501155, 501156, 501157, 501158, 501159, 501160, 501161, 501162, 501163, 501164, 501165, 501166, 501167, 501168, 501169, 501170, 501171, 501172, 501173, 501174, 501175, 501176, 501177, 501178, 501179, 501180, 501181, 501182, 501183, 501184, 501185, 501186, 501187, 501188, 501189, 501190, 501191, 501210, 501211, 501212, 501213, 501214, 501215, 501216, 501217, 501218, 501219, 501220, 501221, 501222, 501223, 501224, 501225, 501226, 501227, 501228, 501229, 501230, 501231, 501232, 501233, 501234, 501235, 501236, 501237, 501238, 501239, 501240, 501241, 501242, 501243, 501244, 501245, 501246, 501247, 501248, 501249, 501250, 501251, 501252, 501253, 501254, 501255, 501256, 501257, 501258, 501259, 501292, 501293, 501294, 501295, 501296, 501297, 501298, 501299, 501300, 501301, 501302, 501303, 501304, 501305, 501306, 501307, 501308, 501309, 501310, 501311, 501312, 501313, 501314, 501315, 501316, 501317, 501318, 501319, 501320, 501321, 501322, 501323, 501324, 501325, 501326, 501327, 501328, 501329, 501330, 501331, 501332, 501333, 501339,	Granted	Ontario, Canada	100%

Gold Projects	Tenement Number/Claim ID	Status	Location	Beneficial Percentage Interest
	501340, 501341, 501342, 501343, 501344, 501345, 501346, 501347, 501348, 501349, 501350, 501351, 501352, 501353, 501354, 501355, 501356, 501357, 501358, 501359, 501360, 501361, 501362, 501363, 501364, 501365, 501366, 501367, 501368, 501369, 501370, 501371, 501372, 501373, 501374, 501375, 501376, 501377, 501378, 501379, 501380, 501381, 501382, 501383, 501384, 501385, 501386, 501387, 501388, 501527, 501528, 501529, 501530, 501531, 501532, 501533, 501534, 501535, 501536, 501537, 501538, 501539, 501540, 501541, 501542, 501543, 501544, 501545, 501546, 501547, 501548, 501549, 501550, 501551, 501552, 501568, 501569, 501570, 501571, 501572, 501573, 501574, 501575, 501576, 501577, 501578, 501579, 501580, 501581, 501582, 501583, 501584, 501585, 501586, 501587, 501588, 501589, 501590, 501591, 501592, 501593, 501594, 501595, 501596, 501597, 501598, 501599, 501600, 501601, 501602, 501603, 501604, 501605, 501606, 501607, 501608, 501609, 501610, 501611, 501612, 501613, 501614, 501615, 501616, 501617, 501814, 501815, 501816, 501817, 501818, 501819, 501820, 501821, 501822, 501823, 501824, 501825, 501826, 501827, 501828, 501829, 501830, 501831, 501832, 501833, 501834, 501835, 501836, 501837, 501838, 501839, 501840, 501841, 501842, 501843, 501844, 501845, 501846, 501847, 501848, 501849, 501850, 501851, 501852, 501853, 501854, 501855, 501856, 501857, 501858, 501859, 501860, 501861, 501862, 501863, 502011, 502012, 502013, 502014, 502015, 502016, 502017, 502018, 502019, 502020, 502021, 502022, 502023, 502024, 502025, 502026, 502027, 502028, 502029, 502030, 502031, 502032, 502033, 502034, 502035, 502036, 502037, 502038, 502039, 502040, 502041, 502042, 502043, 502044, 502045, 502046, 502047, 502048, 502049, 502050, 502051, 502052, 502053, 502054, 502055, 502056, 502057, 502058, 502059, 502060, 502132, 502133, 502134, 502135, 502136, 502137, 502138, 502139, 502140, 502141, 502142, 502143, 502144, 502145, 502146, 502147, 502148, 502149, 502150, 502151, 502152, 502153, 502154, 502155, 502156, 502157, 502158, 502159, 502160, 502161, 502162, 502163, 502164, 502165, 502166, 502167, 502168, 502169, 502170, 502171, 502172, 502173, 502174, 502175, 502176, 502177, 502178, 502179, 502180, 502181, 502227, 502229, 502231, 502232, 502234, 502236, 502238, 502240, 502241, 502243, 502245, 520337, 520338,			



Gold Projects	Tenement Number/Claim ID	Status	Location	Beneficial Percentage Interest
	520339, 520340, 520935, 520936, 520937, 520938, 520939, 520940, 520941, 520942, 520943, 520944, 520945, 520946, 520947, 520948, 520949, 520950, 520951, 520952, 520953, 520954, 520955, 520956, 520957, 520958, 520959, 520960, 520961, 520962, 520963, 520964, 520965, 520966, 520967, 520968, 520969, 520970, 520971, 520972, 520973, 520974, 520975, 520976, 520977, 520978, 520979, 520980, 520981, 520982, 520983, 520984, 520985, 520986, 520987, 520988, 520989, 520990, 520991, 520992, 520993, 520994, 520995, 520996, 520997, 520998, 520999, 521000, 521001, 521002, 521003, 521004, 521005, 521006, 521007, 521008, 521009, 521010, 521011, 521012, 521013, 521014, 521015, 521016, 521017, 521018, 521019, 521020, 521021, 521022, 521023, 521024, 521025, 521026, 521027, 521028, 521029, 521030, 521031, 521032, 521033, 521034, 521035, 521036, 521037, 521038, 521039, 521040, 521041, 521042, 521043, 521044, 521045, 521046.			
Pickle Lake – Reylea Lake	580157, 580158, 580159, 580160, 580161, 580162, 580163, 580164, 580165, 580166, 580167, 580168, 580169, 580170, 580171, 580172, 580173, 580174, 580175, 580176, 580177, 580178, 580179, 580180, 580181, 580182, 580183, 580184, 580185, 580186, 580187, 580188, 580191, 580192, 580193, 580194, 580195, 580196, 580197, 580198, 580199, 580200, 580201, 580202, 580203, 580204, 580205, 580206, 580207, 580208, 580209, 580210, 580211, 580212, 580213, 580214, 580215, 580216, 580217, 580218, 580219, 580220, 580221, 580222, 580223, 580224, 580225, 580226, 580227, 580228, 580229, 580230, 580231, 580232, 580233, 580234, 580235, 580236, 580237, 580238, 580239, 580240, 580241, 580242, 580243, 580244, 580245, 580246, 580247, 580248, 580249, 580250, 580251, 580252, 580253, 580254, 580255, 580256, 580257, 580258, 580259, 580260, 580261, 580262, 580263, 580264, 580265, 580266, 580267, 580268, 580269, 580270, 580271, 580272, 580273, 580274, 580275, 580276, 580277, 580278, 580279, 580280, 580281, 580282, 580283, 580284, 580285, 580286, 580287, 580288, 580289, 580290, 580291, 580292, 580293, 580294.	Granted	Ontario, Canada	100%
Pickle Lake – South Limb	100831, 101396, 101525, 101526, 102692, 102906, 116721, 118004, 118221, 121656, 121657, 125050, 125051, 125052, 125053, 125760, 125761, 125762, 129676, 160810, 164956, 166176, 166304, 166305, 169680, 169681, 173060, 178291, 178314, 178995, 178996, 178997, 179657, 189146, 189147, 189148,	Granted	Ontario, Canada	100%

Gold Projects	Tenement Number/Claim ID	Status	Location	Beneficial Percentage Interest
	194187, 194210, 194211, 194935, 194936, 194937, 195563, 218371, 219081, 224876, 225586, 225587, 225588, 226523, 226524, 226525, 227088, 231687, 232868, 260845, 262197, 262198, 265588, 266276, 266277, 266278, 268320, 268321, 268322, 273549, 273550, 281607, 282260, 282261, 285637, 285770, 289638, 289639, 293068, 293069, 293146, 293147, 297669, 297670, 321676, 321677, 322315, 328186, 328833, 328834, 328835, 341207, 341208, 535546, 535547, 535548, 535549, 535550, 535551, 535552, 535553, 535554, 535555, 535556, 535557, 551427, 562023, 562024, 562025, 562026.			
Pickle Lake – Two Fifty	541335, 541338, 541339, 541340, 541342, 541343, 541347, 541348, 541349, 541351, 541352, 541353, 541354, 541356, 541357, 541362, 541363, 541364, 541365, 541367, 541368, 541369, 541370, 541371, 541372, 541373, 541374, 541376, 541377, 541378, 541379, 541380, 541381, 541382, 541383, 541384, 541385, 541387, 541388, 541389, 541390, 541391, 541392, 541393, 541394, 541395, 541396, 541397, 541398, 541399, 541400, 541401, 562623, 562624, 562625, 562626, 562627, 562628, 562629, 562630, 562631, 562632, 562633, 562634, 562635, 562637, 562638, 562639, 562640, 562641, 562642, 562643, 562644, 562645, 562646, 562647.	Granted	Ontario, Canada	100%
Pickle Lake – Two Fifty North	614611, 614612, 614613, 614614, 614615, 614616, 614617, 614618, 614619, 614620, 614621, 614622, 614623, 614624, 614625, 614626, 614627, 614628, 614629, 614630, 614631, 614632, 614633, 614634, 614635, 614636, 614637, 614638, 614639, 614640, 614641, 614642, 614643, 614644, 614645, 614646, 614647, 614648, 614649, 614650, 614651, 614652, 614653, 614654, 614655, 614656, 614657, 614658, 614659, 614660, 614661, 614662, 614663, 614664, 614665, 614666, 614667, 614668, 614669, 614670, 614671, 614672, 614673, 614674, 614675, 614676, 614677, 614678, 614679, 614680, 614681, 614682, 614683, 614684, 614685, 614686, 614687, 614688, 614689, 614690, 614691, 614692, 614693, 614694, 614695, 614696, 614697, 614698, 614699, 614700, 614701, 614702, 614703, 614704, 614705, 614706, 614707, 614708, 614709, 614710, 614711, 614712, 614713, 614714, 614715, 614716, 614717, 614718, 614719, 614720, 614721, 614722, 614723, 614724, 614725, 614726, 614727, 614728, 614729, 614730, 614731, 614732, 614733, 614734, 614735, 614736, 614737, 614738, 614739, 614740, 614741, 614742, 614743, 614744, 614745, 614746, 614747, 614748,	Granted	Ontario, Canada	100%

Gold Projects	Tenement Number/Claim ID	Status	Location	Beneficial Percentage Interest
	614749, 614750, 614751, 614752, 614753, 614754, 614755, 614756, 614757, 614758, 614759, 614760, 614761, 614762, 614763, 614764, 614765, 614766, 614767, 614768, 614769, 614770, 614771, 614772, 614773, 614774, 614775, 614776, 614777, 614778, 614779, 614780, 614781, 614782, 614783, 614784, 614785, 614786, 614787, 614788, 614789, 614790, 614791, 614792, 614793, 614794, 614795, 614796, 614797, 614798, 614799, 614800, 614801, 614802, 614803, 614804, 614805, 614806, 614807, 614808, 614809, 614810, 614811, 614812, 614813, 614814, 614815, 614816, 614817, 614818, 614819, 614820, 614821, 614822, 614823, 614824, 614825, 614826, 614827, 614828, 614829, 614830, 614831, 614832, 614833, 614834, 614835, 614836, 614837, 614838, 614839, 614840, 614841, 614842, 614843, 614844, 614845, 614846, 614847, 614848, 614849, 614850, 614851, 614852, 614853, 614854, 614855, 614856, 614857, 614858, 614859, 614860, 614861, 614862, 614863, 614864, 614865, 614866, 614867, 614868, 614869, 614870, 614871, 614872, 614873, 614874, 614875, 614876, 614877, 614878, 614879, 614880, 614881, 614882, 614883, 614884, 614885, 614886, 614887, 614888, 614889, 614890, 614891, 614892, 614893, 614894, 614895, 614896, 614897, 614898, 614899, 614900, 614901, 614902, 614903, 614904, 614905, 614906, 614907, 614908, 614909, 614910, 614911, 614912, 614913, 706353, 706354, 706355, 706356, 706357, 706358, 706359, 706365, 706366, 706367, 706368, 706369, 706370, 706371, 706372, 706373, 706374, 706375, 706376, 706377, 706378, 706379, 706380, 706381, 706382, 706383, 706384, 706385, 706386.			
Pickle Lake – West Pickle	104760, 104916, 104917, 104918, 104919, 104920, 105656, 105657, 120067, 120068, 126563, 128549, 128550, 138039, 139349, 147534, 147535, 147536, 155122, 155325, 165265, 171104, 171105, 171106, 171107, 173237, 173238, 176769, 184045, 187800, 191356, 191357, 199313, 199314, 199962, 207329, 227360, 227361, 236415, 239988, 248070, 248771, 248772, 250862, 256698, 256699, 266552, 267218, 267219, 273313, 285880, 285881, 287193, 293994, 295326, 295992, 300139, 303169, 306594, 316767, 316768, 320515, 323119, 325091, 325092, 333749, 333750, 333751, 335552, 336241, 336242, 338336, 345540, 345541, 345542, 345543, 541375, 541386.	Granted	Ontario, Canada	100%



Graphite Projects	Tenement Number/Claim ID	Status	Location	Beneficial Percentage Interest
Pickle Lake - Manitouwadge	106808, 109041, 110086, 113625, 113626, 118723, 120303, 128662, 131666, 131972, 134369, 148355, 148356, 148357, 151037, 160975, 162102, 162103, 177448, 178748, 178749, 184310, 185993, 185994, 206507, 206508, 213679, 214769, 215274, 216286, 233311, 233312, 233313, 242045, 245488, 246007, 248870, 251308, 251595, 251596, 251597, 251598, 252658, 252659, 254326, 262718, 265818, 265819, 265820, 270688, 270689, 270690, 271714, 271715, 271716, 271717, 271718, 271719, 280111, 280112, 281804, 281805, 289867, 298697, 299651, 300011, 302379, 302380, 302381, 317648, 317649, 317650, 317651, 318725, 329071, 330634, 330635, 332614, 338507, 338508, 338509, 751443, 751444, 751445, 751446, 751447, 751448, 751449, 751450.	Granted	Ontario, Canada	100%

2. Mining tenements acquired during the quarter and their location:

Graphite Project	Tenement Number	Status	Location	Beneficial Percentage Interest
Pickle Lake - Manitouwadge	751443, 751444, 751445, 751446, 751447, 751448, 751449, 751450.	Granted	Ontario, Canada	100%

3. Mining tenements disposed of during the quarter and their location:

Lithium Projects	Tenement Number/Claim ID	Status	Location	Beneficial Percentage Interest
Root Lake	101422, 101503, 101504, 101696, 116836, 117902, 121020, 121042, 121133, 121134, 122349, 122350, 122351, 124441, 152951, 160180, 160270, 160964, 160965, 160966, 166199, 166201, 166202, 166203, 166284, 169575, 179021, 179044, 179045, 182367, 194973, 196921, 214118, 214119, 214121, 214122, 214123, 214216, 214217, 214218, 217760, 225637, 225638, 232916, 232917, 232988, 232989, 233675, 261574, 262879, 269553, 269563, 269564, 269630, 272959, 281639, 281640, 282239, 285014, 289614, 290289, 290290, 298925, 298926, 298927, 298947, 298948, 298950, 321059, 321565, 328205, 328206, 328225, 328226, 328813, 329530, 329531, 340566, 340586, 340587, 340588, 340589, 340676, 341368, 341369, 341370, 553204, 553205, 553206, 553207, 553208, 553209, 553210, 553211, 553212, 553213, 553214, 553215, 553216, 553217, 553218.	Granted	Ontario, Canada	20%
Seymour Lake	102009, 103639, 108167, 109882, 109883, 109884, 110535, 110794, 110795, 110796, 111208, 111240, 111512, 112597, 114199, 114200, 115999, 116000, 116001, 118922, 122538, 123189, 125514, 126089, 126090, 128849, 130705, 130706, 132743, 134452, 137057, 137595, 139233, 140447, 140448, 142382, 142383, 142384, 143993, 144333, 145302, 146398, 147129, 147130, 147644, 147645, 149178, 149204, 150834, 152639, 152695, 154018, 157231, 158455, 158456, 158595, 158701, 158702, 158739, 159350, 161036, 161037, 161227, 161228, 161676, 164044, 164290, 164291, 164672, 165944, 166147, 167316, 167331, 167714, 171277, 174901, 176401, 177615, 182257, 182794, 182795, 182796, 183014, 183611, 183612, 184741, 184742, 186421, 186458, 186459, 186558, 186683, 186849, 186850, 189693, 190097, 190098, 190099, 191608, 192878, 192879, 193064, 193065, 195436, 197307, 197308, 199575, 199576, 201118, 201239, 202392, 202393, 202394, 204013, 206643, 209206, 209207, 209269, 210717, 211639, 212521, 213762, 213972, 216046, 216480, 219380, 219487, 224207, 224208, 226787, 226788, 228166, 230975, 230976, 232543, 232544, 233869, 233870, 233871, 234515, 234658, 237862, 238118, 238343, 239069, 239142, 239197, 244708, 246792, 247152, 247930, 247931, 250469, 252479,	Granted	Ontario, Canada	20%

Lithium Projects	Tenement Number/Claim ID	Status	Location	Beneficial Percentage Interest
	252530, 252702, 252703, 252704, 252705, 255760, 256854, 257033, 257034, 257911, 259408, 259409, 261948, 264527, 264569, 264570, 265918, 268004, 269391, 270371, 270372, 271256, 271302, 271759, 275234, 277335, 278196, 278197, 280559, 280560, 280561, 282491, 282661, 282662, 285387, 289913, 289914, 290555, 290713, 292949, 293546, 297013, 302513, 304354, 305606, 306092, 306359, 306504, 307057, 312238, 312405, 312772, 312773, 312836, 313281, 313660, 313661, 313805, 313806, 313807, 313967, 316941, 317425, 318517, 322021, 325851, 326498, 326802, 327346, 327347, 328430, 329159, 329160, 331205, 331233, 332326, 332327, 336637, 337814, 337815, 338554, 339017, 339018, 341504, 341621, 342142, 342143, 343145, 343146, 343147, 343884, 344314, 344315, 518640, 518646, 518652, 518659, 518660, 518666, 518667, 518668, 518673, 518674, 518675, 518676, 518680, 518681, 518682, 518683, 518685, 518686.			
Wisa Lake	103529, 103846, 113513, 118618, 118619, 118801, 118802, 119131, 119132, 119133, 129848, 131136, 133592, 145905, 150259, 157769, 159951, 161045, 164373, 167103, 176985, 176986, 177777, 177778, 177779, 178817, 183797, 193276, 193277, 195845, 198377, 212601, 212614, 213853, 213854, 215841, 215842, 215843, 223146, 224167, 224168, 230802, 231115, 231116, 231808, 234393, 243004, 243329, 244999, 246563, 246564, 250542, 252720, 253045, 253046, 262540, 269309, 269310, 271771, 271772, 281855, 281856, 282740, 282741, 289548, 297767, 301603, 307936, 308449, 308450, 317062, 327963, 329248, 329645, 338625, 338787, 635731, 635732, 635733, 635734, 635735, 635736, 635737, 635738, 635739, 635740, 635741, 635742.	Granted	Ontario, Canada	20%
Root Lake Patents	MLO-13011, MLO-13014, MLO-13016, PAT-51965, PAT-51966, PAT-51967, PAT-51968, PAT-51969, PAT-51970, PAT-51971, PAT-51972, PAT-51973, PAT-51974, PAT-51975, PAT-51976, PAT-51977, PAT-51978, PAT-51979, PAT-51980, PAT-51981, PAT-51982, PAT-51983, PAT-51984, PAT-51985, PAT-51986, PAT-51987, PAT-51988, PAT-51989, PAT-51990, PAT-51991, PAT-51992, PAT-51993, PAT-51994, PAT-51995, PAT-51996, PAT-51997.	Granted	Ontario, Canada	20%