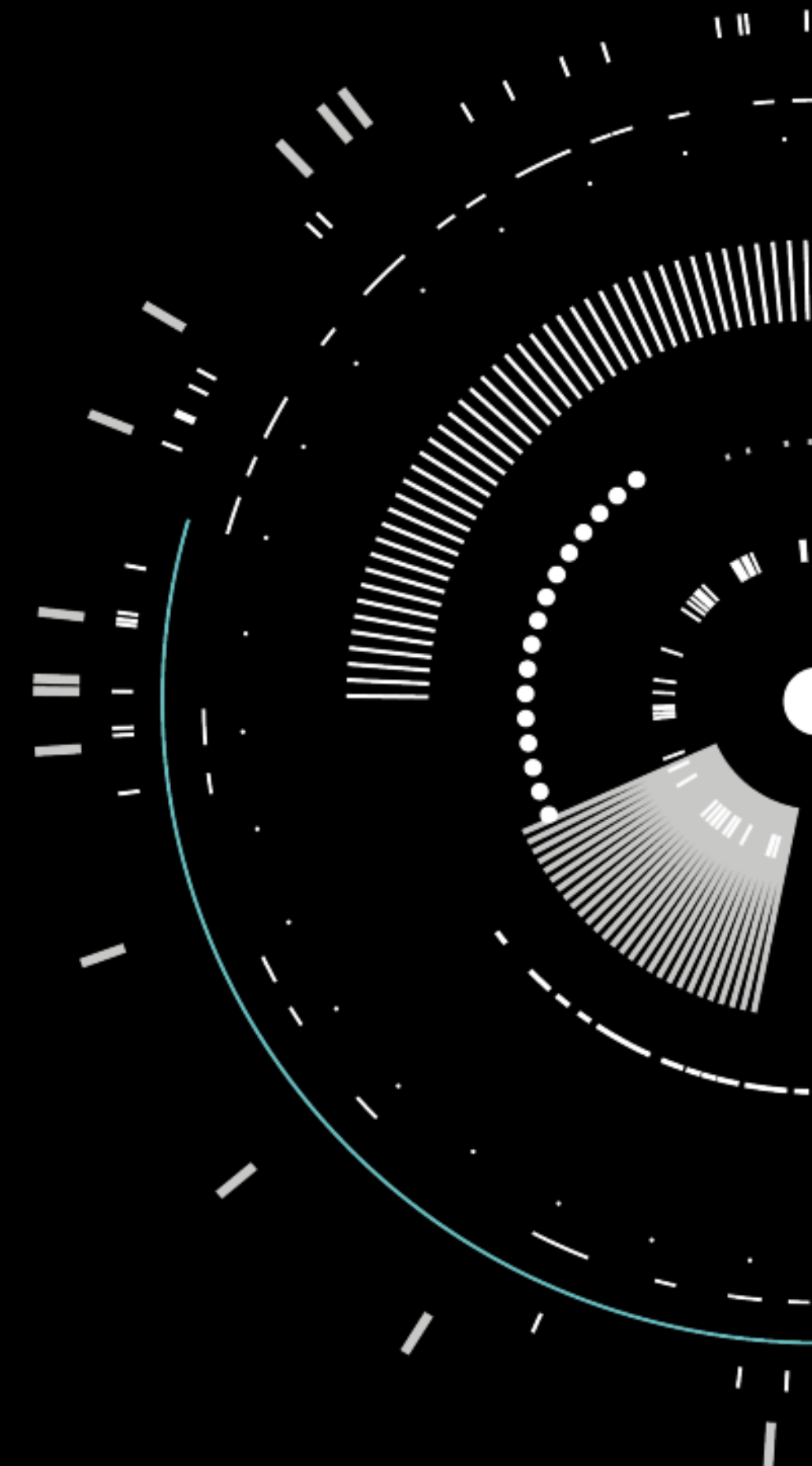


# Organising, Connecting and Optimising MOBILITY

## 1H FY2023 FINANCIAL RESULTS

27 February 2023







**This presentation has been prepared by Orcoda Limited ACN 009 065 650 (“Orcoda”).**

The following material is for general information purposes only and should not be relied upon for the making of any investment decision. Any investment in Orcoda is subject to a number of investment risks including the possibility of loss of capital invested and no return of income or payment of dividends. Neither Orcoda nor any other entity or person in or associated with the Orcoda group of companies guarantees any return (whether capital or income) or generally the performance of Orcoda or the price at which its securities may trade.

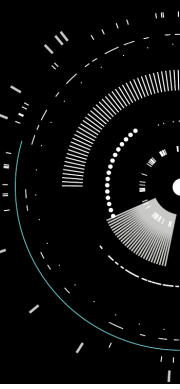
In particular, this presentation is not a recommendation, offer or invitation to subscribe for or purchase Orcoda securities. This presentation is not exhaustive of all of the information a potential investor or their professional advisers would require. This presentation does NOT constitute a “Prospectus” or a “Disclosure Document” (as defined in the Corporations Act 2001 (Cth) (Corporations Act)) and has not been, and will not be, lodged with the Australian Securities and Investments Commission or any other regulatory authority. Accordingly, it is not required to contain, and may not necessarily contain, all of the information that a Prospectus or like Disclosure Document would be required to contain pursuant to the Corporations Act.

This presentation does not take into account any specific objectives, financial situation or needs of investors. For these and other reasons, you are strongly recommended to obtain your own up to date independent legal, financial and investment advice – those acting without such advice do so at their own risk.

This presentation may contain “forward-looking statements” which are not historical facts. Words such as “expect(s)”, “feel(s)”, “believe(s)”, “will”, “may”, “anticipate(s)” and similar expressions are intended to identify forward-looking statements. Any forward-looking statements in this presentation should be considered “at-risk statements” - not to be relied upon as they are subject to known and unknown risks, uncertainties and other factors that may lead to actual results differing from any forward-looking statement. You are cautioned not to place undue reliance on these forward-looking statements that speak only as of the date hereof and Orcoda does not undertake any obligation to revise and disseminate forward-looking statements to reflect events or circumstances after the date hereof, or to reflect the occurrence of or non-occurrence of any events. In addition, the past performance of Orcoda cannot be assumed as indicative of the future performance. **There is NO guarantee of future performance - actual results and future outcomes will in all likelihood differ from those outlined herein.**

Neither Orcoda nor any of its advisers, agents or employees make or give any express or implied representation, warranty or guarantee that the information contained in this presentation or otherwise supplied by or on behalf of Orcoda is complete or accurate or that it has been or will be audited or independently verified, or that reasonable care has been or will be taken in compiling, preparing or furnishing the relevant information. Orcoda does not take any responsibility for any inference, interpretation, opinion or conclusion that any person may draw or form from this presentation.

To the maximum extent permitted at law, Orcoda and all of its representatives, directors, partners, employees or professional advisers exclude all direct and indirect liability arising out of or in connection with any use or reliance of the information contained or described within this presentation. Other than to the extent required by law (and only to that extent), the Parties do not make any representation or give any assurance, guarantee or warranty (express or implied) as to, nor assume any responsibility or liability for, the authenticity, origin, validity, accuracy, suitability or completeness of, or any errors in or omissions from, any information, statement or opinion contained in this Presentation or any accompanying, previous or subsequent material or presentation.



## Who we are

Orcoda Limited (ASX: ODA) is an integrated technology company that provides smart technology solutions for transport logistics and transport infrastructure services.

Our proprietary cloud-based, open ended, end-to-end software technology platforms have true optimisation capabilities, enabling clients to generate real time, fast, accurate and reliable information to make data-led decisions for the movement of people, parcels and goods, the assets they travel in and the infrastructure they travel on.

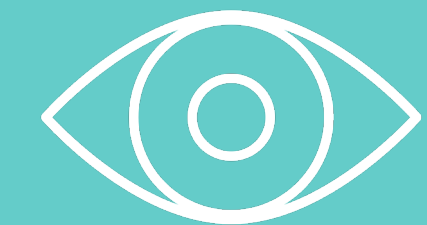
Our transport infrastructure services via Betta Group deliver value-add solutions primarily in major road, rail and air infrastructure projects and is an integral part of achieving our Vision.

Our clients come from a diverse array of industry sectors and include some of Australia's largest companies operating in the resources (mining, oil & gas and infrastructure), transport logistics and healthcare transport sectors.



### Our Mission

To optimise our clients' transport operations and support their digital transformation



### Our Vision

To develop an ecosystem of interconnected technology, integrating smart devices to provide big data for continual optimisation and digitisation of transport services and transport infrastructure

# 1H FY23 FINANCIAL HIGHLIGHTS



Strong growth in key financial metrics compared to the previous half, with record half yearly total income and customer receipts

## TOTAL INCOME

**\$9.8m**

**+19%**

vs. 1H FY22

**+16%**

vs. 2H FY22

## UNDERLYING EBITDA

**\$0.3m**

**(72%)**

vs. 1H FY22

**+3874%**

vs. 2H FY22

## CUSTOMER RECEIPTS

**\$11.3m**

**+27%**

vs. 1H FY22

**+36%**

vs. 2H FY22

## OPERATING CASH FLOW

**\$0.4m**

**(66%)**

vs. 1H FY22

**+330%**

vs. 2H FY22





## Positive momentum in our logistics software and infrastructure services businesses with major contract wins

### Positive Momentum in Resource Logistics

- ❖ Betta Group, led by ex-Ventia executive Rae Jeffrey following departure of founder Geoff Williams, has successfully retained existing key clients and staff and implemented various initiatives to better position the business for long-term profitable growth
  - ❖ Strong revenue momentum delivering works for existing and new clients. E.g. recently won \$4.1m works contract with Yurika to be delivered during 2H FY23
  - ❖ 1H FY23 profitability, however, was negatively impacted by one-off exceptional costs due to electrical division workforce restructuring and legacy issues incurred during this transition period, and higher operating costs primarily due to increased wages to retain and recruit key talents in a highly competitive labour market for skilled tradesmen
- ❖ Signed 3-year SaaS contract with Kestrel Coal to manage workforce accommodation for their 700-strong workers on-site at the Kestrel mine

### Strong Performance in Healthcare and Transport Logistics

- ❖ 2x growth in 1H FY23 total income and 1.7x growth in Underlying EBITDA, driven by new contracts and successful execution of the Mt Buller rideshare contract for the 2022 ski season, which benefited from the recovery in visitor numbers due to relaxation of COVID restrictions
- ❖ Awarded 2 new SaaS contracts in fleet management (subject to contract signing) through our teaming agreement with Teletrac Navman
- ❖ Developing exciting car management apps on the back of strong interests from potential customers

### Well capitalised to fund growth

- ❖ As of 31/12/22, available working capital \$3m including ~\$2m cash and cash equivalents
- ❖ On 20/2/23, successfully executed \$1m share placement at \$0.12 per share to existing shareholders to fund development of new car management apps

### 1H FY23 Divisional Performance

#### RESOURCE LOGISTICS

Infrastructure, resources (oil & gas, mining)



Infrastructure services (Betta Group) and SaaS workforce management software platform for the infrastructure and resources sectors

Total Income  
**\$6.5m**  
Underlying EBITDA  
**\$443k**

#### HEALTHCARE AND TRANSPORT LOGISTICS

Healthcare, pathology, transport logistics



SaaS enterprise platform to optimise scheduling + routing for healthcare and transport logistics providers

Total Income  
**\$3.1m**  
Underlying EBITDA  
**\$560k**

*Recurring revenue model*

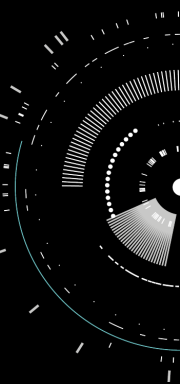


## Strong revenue growth; profitability was impacted by one-off exceptional costs

*As of December 31<sup>st</sup>*

	1H FY23	1H FY22	Change
	\$m	\$m	%
Revenue from Operations	9.2	7.9	17%
Other income (incl. R&D tax incentive)	0.6	0.4	52%
<b>Total income</b>	<b>9.8</b>	<b>8.2</b>	<b>19%</b>
<b>Underlying EBITDA</b>	<b>0.3</b>	<b>1.1</b>	<b>(72%)</b>
<i>Underlying EBITDA Margin</i>	3%	13%	
<b>Profit after income tax from continuing operations</b>	<b>(0.5)</b>	<b>0.8</b>	<b>(161%)</b>

- ❖ Total income \$9.8m, up 19% from 1H FY22
- ❖ Increase primarily driven by SaaS contracts in particular the Mt Buller rideshare contract
- ❖ Underlying EBITDA declined primarily attributable to lower profitability in Betta Group due to: i) exceptional one-off costs from electrical division workforce restructuring and legacy issues during transition period, ii) higher operating costs with increased wages for staff retention and recruitment in a competitive skilled labour market
- ❖ Net loss \$0.5m primarily due to lower Underlying EBITDA and higher depreciation & amortisation



## Robust balance sheet to fund future growth

	31-Dec-22	30-June-22
	\$m	\$m
<b>ASSETS</b>		
Cash and cash equivalents	1.9	2.4
Trade & other receivables	1.8	3.1
Intangible assets	9.0	8.7
Plant and equipment	5.1	4.6
Other assets	0.8	1.0
<b>Total assets</b>	<b>18.6</b>	<b>19.7</b>
<b>LIABILITIES</b>		
Trade and other payables	1.4	2.1
Financial liabilities	2.6	2.5
Other liabilities	0.7	0.8
<b>Total liabilities</b>	<b>4.6</b>	<b>5.4</b>
<b>NET ASSETS</b>	<b>13.9</b>	<b>14.4</b>

- ❖ Stable and robust balance sheet
- ❖ Continued strong focus in working capital management, resulting in lower accounts receivable days and c.\$600k reduction in net working capital balance in 1H FY23
- ❖ Cash and cash equivalents \$1.9m and available working capital \$3.0m as of 31/12/22
- ❖ \$2.6m financial liabilities (\$0.7m current, \$1.9m non-current) comprised of chattel mortgages from Betta Group equipment purchases





## Record customer receipts and investing for long-term growth

*As of December 31<sup>st</sup>*

	1H FY23	1H FY22
	\$m	\$m
Receipts from customers	11.3	8.9
Payments to suppliers and employees	(11.7)	(8.1)
Other	0.8	0.5
<b>Net cash from operating activities</b>	<b>0.4</b>	<b>1.3</b>
Investing cash flows	(0.5)	(0.8)
Financing cash flows	(0.4)	0.2
<b>Net cash flows</b>	<b>(0.5)</b>	<b>0.6</b>
Cash at beginning of period	2.4	2.4
<b>Cash at end of period</b>	<b>1.9</b>	<b>3.0</b>

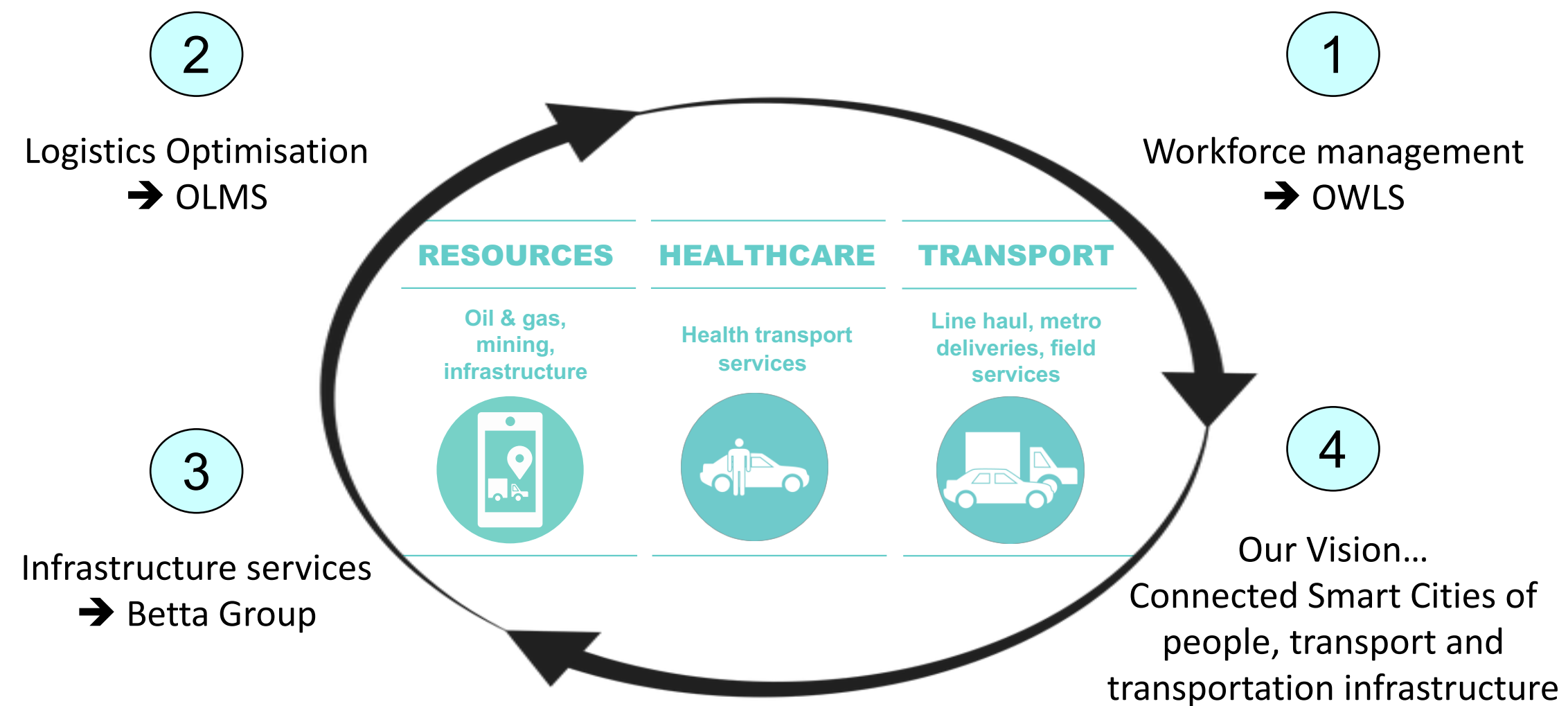
- ❖ \$11.3m in customer receipts, up 27% and a record half-yearly
- ❖ Positive operating cash flows in 1H FY23, although negatively impacted by exceptional one-off costs and higher operating costs in Betta Group, and continued investments in sales & marketing and software development
- ❖ Investment cash flows comprised third and final \$500k earn-out instalment payment in relation to the acquisition of Betta Group



## Organising, Connecting and Optimising Mobility

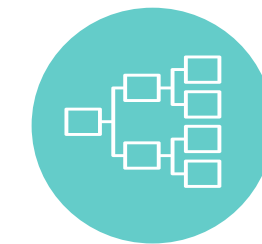
One Integrated Platform Streamlining Transit

People (Workforce) ↔ Assets (Transportation) ↔ Infrastructure (Smart Cities)



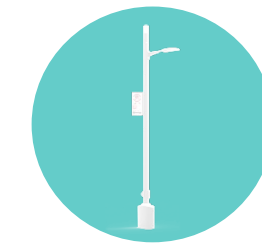
**Best-in-category: Market-leading optimisation algorithm for people, parcel and goods mobility and asset logistics**

- Incorporates and extends typical fleet management tools – ie. telematics and real-time data insights – with an automated logistics optimization algorithm, which accounts for a multitude of customizable constraints and makes decisions that are continuously refined in real-time through machine learning



**Patented technologies**

- USA and Australia patent for fully integrated logistics + bookings optimisation; providing a Service Orientated Architecture of one database that connects all personnel, service and asset provider databases



**Complementary transport infrastructure services with smart device installation and electrification expertise**

- Through Betta Group, Orcoda is well positioned to benefit from the Government's budgeted transport infrastructure spend of \$110bn over next 10 years and smart transport infrastructure build-out



**Profitable and scalable, with strong revenue growth and the balance sheet to support our strategic plans**

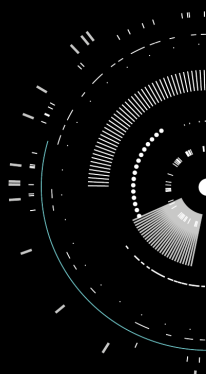
- Strong revenue growth, sustained profitability and positive operating cash flows generation
- SaaS model for our technology platform is highly scalable
- ~\$3m available working capital as of December 2022, and \$1m equity raised in February



**Large and global total addressable market**

- Across Healthcare, Transport and Resources industry verticals where there are significant operational improvement opportunities
- Digital transformation trend is accelerating – strong tailwinds of growth in OLMS and OWLS adoption
- Benefitting from accelerating technology adoption, and large government and commercial capital investment into building smart-cities / smart road, rail & air infrastructure





## Experienced leadership | Long-term shareholder support | Balance Sheet for growth

### Board



**Nicholas Johansen**  
**Non-Executive Chairman**  
*Chair Audit Committee*  
*Partner Cozens Johansen Law*



**Brendan Mason**  
**Non-Executive Director**  
*Chairman Rem Committee*  
*Ex Caterpillar, Cochlear, Boral, Lucent/Bell Labs*



**Geoffrey Jamieson**  
**Managing Director, MAICD**  
*Member Audit Committee*  
*MD Resource Connect, Ex Merchant banker, 35+ years experience as MD or CFO for ASX listed companies*

### Market information

Share price at 23-Feb-2023 (rounded) \$0.15

Shares on issue 167m

**Market capitalisation \$25m**

Available working capital<sup>(1)</sup> \$4m

### Management Team



**Samuel Yue**  
**Chief Financial Officer**  
*MD Barclays Investment Bank, VP Corp Dev Carlsberg, Goldman Sachs*



**Julian Rockett**  
**Company Secretary**  
*Principal Partner Karma Lawyers, Practised lawyer and 10+ years experience as company secretary for ASX listed companies*



**Simon Anthonisz**  
**GM Healthcare and Transport Logistics Division and Group Operating Officer**  
*HR expert / extensive experience across UK & Australia rail & infrastructure projects*



**Rae Jeffrey**  
**GM Betta Group**  
*Ex Ventia Utility Services Central Queensland last 10 years and grew business from \$7.2m p.a. to \$31m p.a.*

### Shareholding composition (as of latest practicable date)

Geoffrey Williams	9.8%
Pronk Holdings Group	9.1%
Blamnco Trading and Chembank	7.2%
Ravenslea Nominees	6.4%
Janegold Pty Ltd	5.3%
Halcyon United Pty Ltd	5.2%

1. Comprises cash and cash equivalents as of 31/12/2022, unused facilities and \$1m equity raise completed on 20/2/2023



---

## GEOFF JAMIESON

M A N A G I N G   D I R E C T O R

---

Email: [gjamieson@orcoda.com](mailto:gjamieson@orcoda.com)

**[www.orcoda.com](http://www.orcoda.com)**

**This presentation has been authorised by the Orcoda Board of Directors.**

Orcoda Limited (ASX:ODA) is a leading provider of smart technology solutions for transport logistics and transport services with expertise in business efficiency and optimisation of processes. We are operational efficiency specialists who supply best-in-class solutions combining technology, management expertise and contracting services that makes our clients among the most productive and cost-effective organisations in their respective industries.

Our clients come from a diverse array of industry sectors and include some of Australia's largest companies operating in the resources (mining, oil & gas and infrastructure), transport logistics and healthcare transport sectors.

Orcoda's combined expertise is focused on three key sectors of transport logistics technology and transport services: road, rail and air. We pride ourselves on enabling our clients to generate fast, accurate and reliable information, ensuring they are able to make the best business decisions the first time, every time and on time.

**ORCODA'S INTERACTIVE INVESTMENT HUB**

Please sign up to our Interactive Investor Hub

<https://investorhub.orcoda.com/> to find our company announcements, receive updates and interact with Orcoda management.

